



## SINGAPOREAN NOTICES TO MARINERS

---

| SECTION | CONTENT   | Page |
|---------|---|------|
| I       | Index of Charts & Publications                                  | 1    |
| II      | New Publications  | 6    |
|         | Notices to Mariners and Chart Corrections                       | 10   |
|         | Temporary and Preliminary Notices                               | 13   |
| III     | Navigational Information  | 15   |
|         | Amendments to Publications                                      | 17   |
| IV      | Reprint of Radio Navigational Warnings                          | 19   |
| V       | Extract of Admiralty Notices to Mariners for Dual Badged Charts | 20   |

---

**The monthly Notices to Mariners contain corrective information affecting charts published by the Hydrographic Department, Maritime and Port Authority of Singapore. The information contained in these Notices should be updated on the charts affected. Notices under Section II apply only to the particular Singaporean Chart(s) indicated.**

---

Mariners are requested to notify the Chief Hydrographer, Maritime and Port Authority of Singapore, immediately on the discovery of new dangers or suspected dangers to navigation and of changes or defects in aids to navigation. See Hydrographic Note on back page.

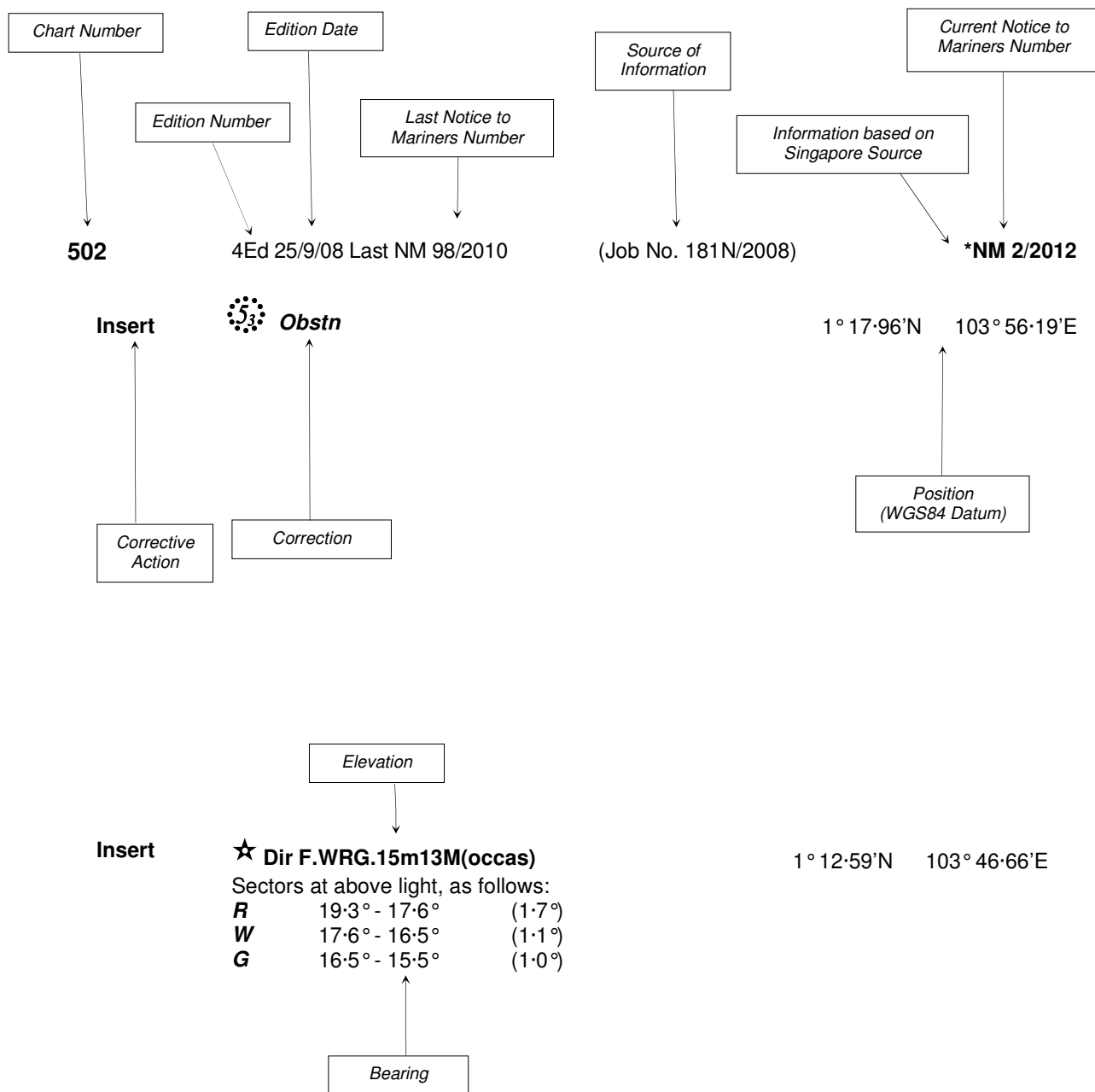
The monthly Singaporean Notices to Mariners can be accessed directly from the MPA website:  
[http://www.mpa.gov.sg/sites/port\\_and\\_shipping/circulars\\_and\\_notices/singapore\\_notices\\_to\\_mariners\(ntm\).page](http://www.mpa.gov.sg/sites/port_and_shipping/circulars_and_notices/singapore_notices_to_mariners(ntm).page)

This service is offered free of charge.

Hydrographic Department  
Maritime and Port Authority of Singapore  
460 Alexandra Road  
PSA Building #20-00  
Singapore 119963  
Tel: (65) 6375 1227  
Fax: (65) 6278 7646

## EXPLANATION OF FORMAT

The elements of a typical chart correction are explained below.



Notes:

- a) Notice to Mariners number followed by:
  - T** indicates a Temporary Notice (eg. **\*NM 3T/2012**).
  - P** indicates a Preliminary Notice (eg. **\*NM 4P/2012**).
- b) Bearings are true reckoned clockwise from 000° to 359°; those relating to lights are from seaward.
- c) Heights and elevations are above Mean High Water Springs.

I  
**INDEX OF CHARTS AND PUBLICATIONS**

**INDEX OF AFFECTED CHARTS**

| DESCRIPTION  | NOTICE NO.       | PAGE NO. |
|--|------------------|----------|
| Index of Singaporean Charts  | -                | 3        |
| Index of Dual Badged Charts  | -                | 4        |
| Index of Singapore Electronic Navigational Chart (ENC)   | -                | 5        |
| Singapore Tide Tables 2013   | -                | 6 to 8   |
| New Edition Singaporean Chart  | -                | 9        |
| Singaporean Chart GSP1/SP1   | *95, *96, 97, 98 | 10       |
| Singaporean Chart 201  | 99               | 10       |
| Singaporean Chart 202  | 98, 99, 100, 101 | 10, 11   |
| Singaporean Chart 500  | 99, *102         | 11       |
| Singaporean Chart 501  | *96, 98, *103    | 11       |
| Singaporean Chart 502  | 97,100, 101      | 11, 12   |
| Singaporean Chart 503  | 101              | 12       |
| Temporary and Preliminary Notices  | *104T, 105T      | 13 to 14 |
| Singapore Port Marine Notices  | *106             | 15       |
| Malaysia Port Circulars  | 107              | 15       |
| Singaporean Print-On-Demand (POD) Charts   | *108             | 15, 16   |
| Amendments to Publications   | *109             | 17, 18   |
| Reprint of Radio Navigational Warnings   | -                | 19       |
| Extract of Admiralty Notices to Mariners for Dual Badged Charts                                | -                | 20       |
| Singapore Electronic Navigational Chart (ENC) Distributors                                     | -                | 21       |
| Chart Agents for the Maritime and Port Authority of Singapore Nautical Charts and Publications | -                | 22       |

\*Denotes information are based on Singaporean source.

I  
INDEX OF CHARTS AND PUBLICATIONS

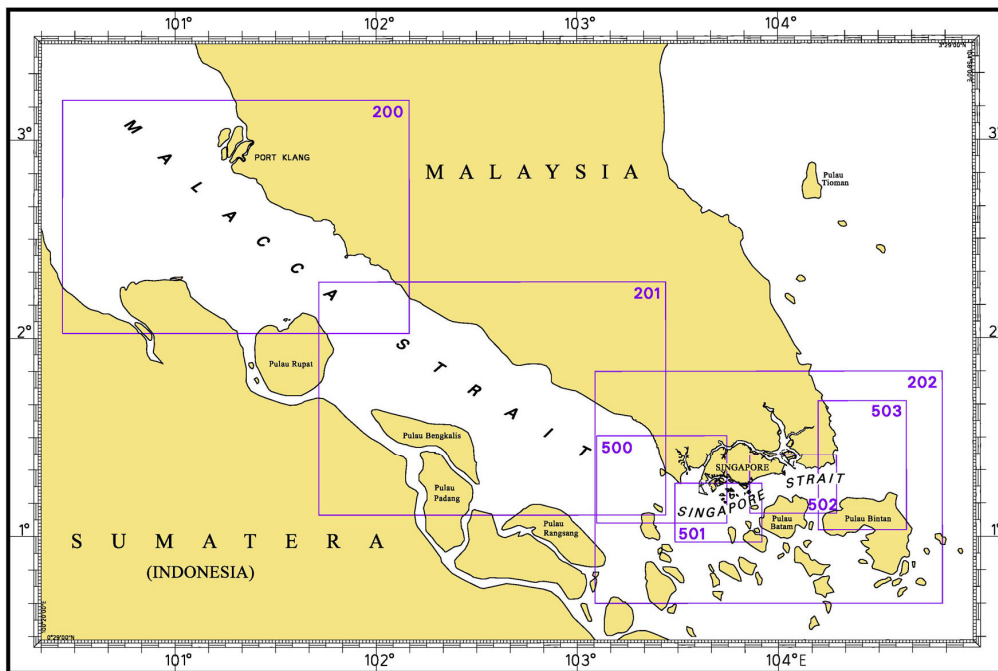
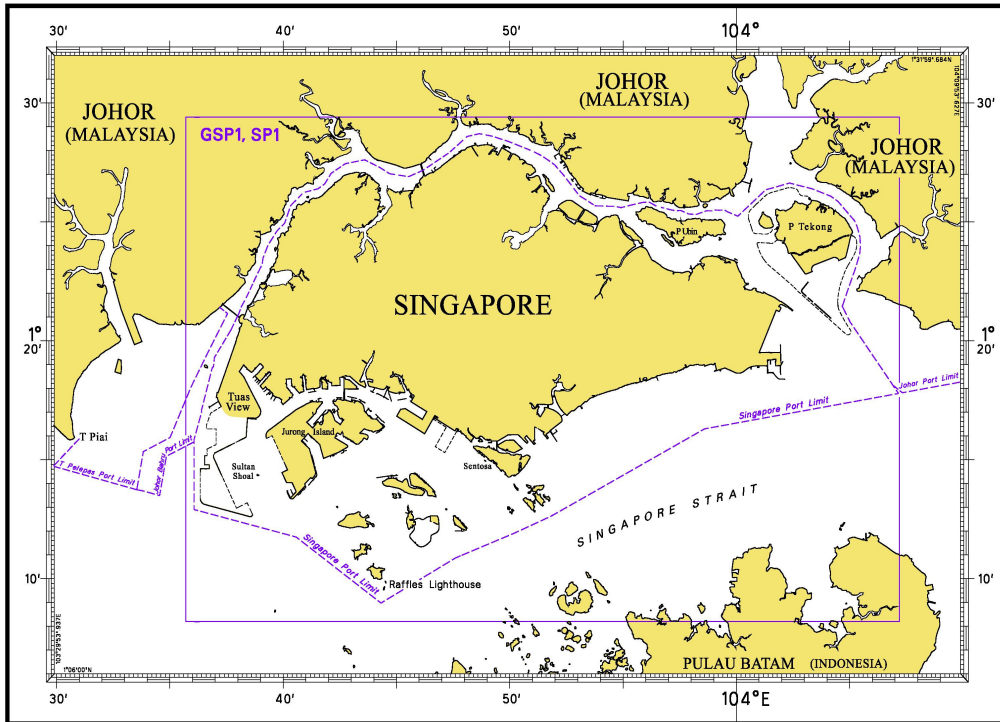
INDEX OF NOTICES

| NOTICE NO.       | DESCRIPTION  | PAGE NO. |
|------------------|--|----------|
| -                | Index of Singaporean Charts  | 3        |
| -                | Index of Dual Badged Charts  | 4        |
| -                | Index of Singapore Electronic Navigational Chart (ENC)   | 5        |
| -                | Singapore Tide Tables 2013   | 6 to 8   |
| -                | New Edition Singaporean Chart  | 9        |
| *95, *96, 97, 98 | Singaporean Chart GSP1/SP1   | 10       |
| 99               | Singaporean Chart 201  | 10       |
| 98, 99, 100, 101 | Singaporean Chart 202  | 10, 11   |
| 99, *102         | Singaporean Chart 500  | 11       |
| *96, 98, *103    | Singaporean Chart 501  | 11       |
| 97, 100, 101     | Singaporean Chart 502  | 11, 12   |
| 101              | Singaporean Chart 503  | 12       |
| *104T, 105T      | Temporary and Preliminary Notices  | 13 to 14 |
| *106             | Singapore Port Marine Notices  | 15       |
| 107              | Malaysia Port Circulars  | 15       |
| *108             | Singaporean Print-On-Demand (POD) Charts   | 15, 16   |
| *109             | Amendments to Publications   | 17, 18   |
| -                | Reprint of Radio Navigational Warnings   | 19       |
| -                | Extract of Admiralty Notices to Mariners for Dual Badged Charts                                | 20       |
| -                | Singapore Electronic Navigational Chart Distributors   | 21       |
| -                | Chart Agents for the Maritime and Port Authority of Singapore Nautical Charts and Publications | 22       |

\* Denotes information are based on Singaporean source.

# I INDEX OF CHARTS AND PUBLICATIONS

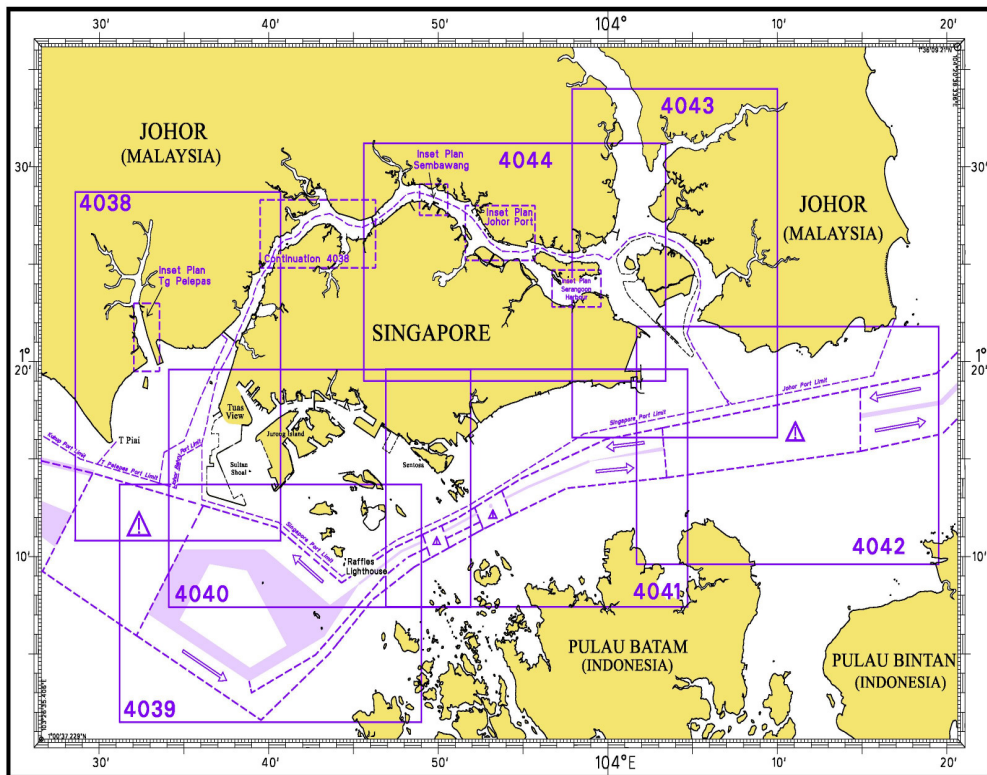
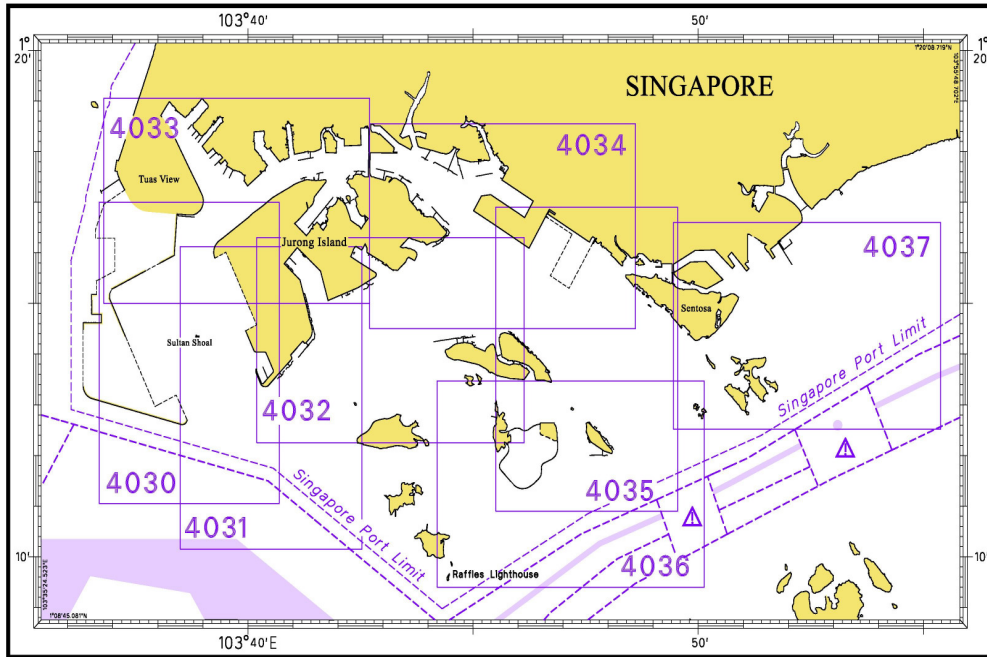
## INDEX OF SINGAPOREAN CHARTS



Notes:  
Updated SINGAPOREAN Charts are available through our Print-On-Demand (POD) Chart Service. For more information, refer to Section III – Navigational Information. These charts can be purchased from our authorised Chart Agents.

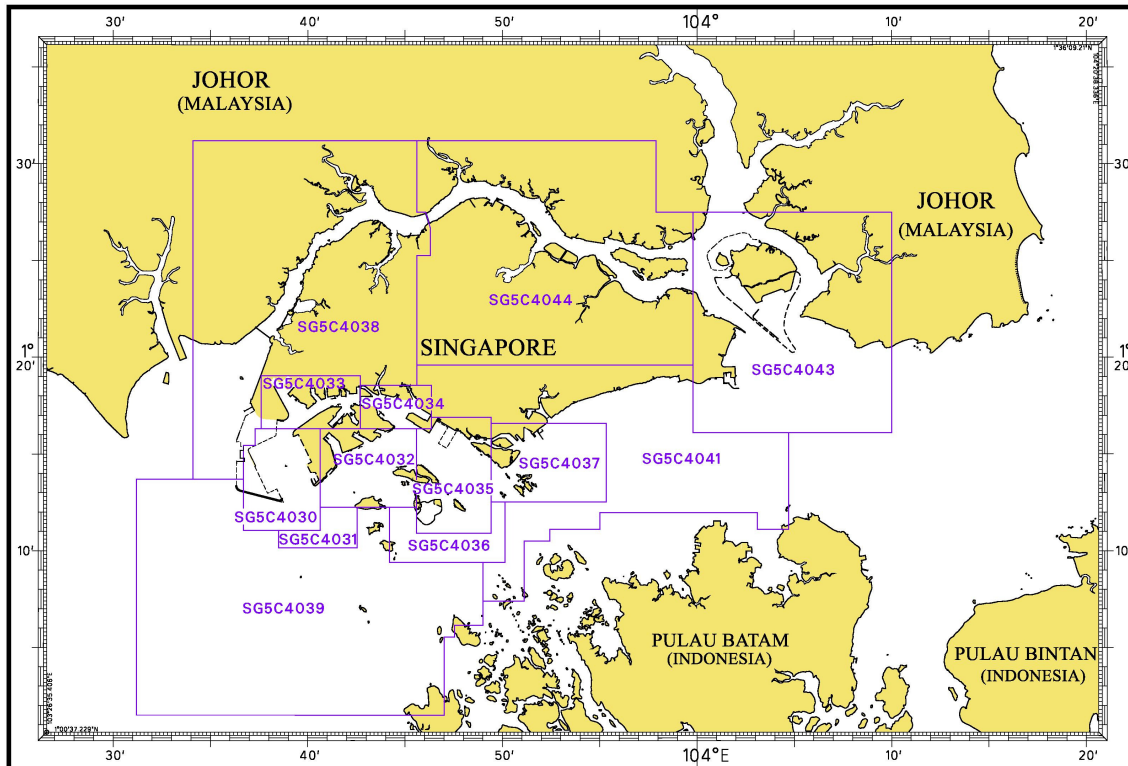
# I INDEX OF CHARTS AND PUBLICATIONS

## INDEX OF DUAL BADGED CHARTS



# I INDEX OF CHARTS AND PUBLICATIONS

## INDEX OF SINGAPORE ELECTRONIC NAVIGATIONAL CHART (ENC)



### COVERAGE OF SINGAPORE ELECTRONIC NAVIGATIONAL CHART (ENC)

| ENC Name | ENC Coverage  | ENC Edition                           |
|----------|---|---------------------------------------|
| SG5C4030 | West Jurong Anchorages and Temasek Fairway                          | 5 <sup>th</sup> Edition (3/05/2012)   |
| SG5C4031 | Western Approaches to Jurong Island                                 | 5 <sup>th</sup> Edition (3/05/2012)   |
| SG5C4032 | Sinki Fairway   | 7 <sup>th</sup> Edition (3/05/2012)   |
| SG5C4033 | Tuas Bay, West Jurong Channel and Pesek Basin                       | 5 <sup>th</sup> Edition (3/05/2012)   |
| SG5C4034 | East Jurong Channel, Pasir Panjang Terminal and West Keppel Fairway | 10 <sup>th</sup> Edition (3/05/2012)  |
| SG5C4035 | Western Anchorages, Jong Fairway and Cruise Bay                     | 12 <sup>th</sup> Edition (27/09/2012) |
| SG5C4036 | Raffles Lighthouse to The Sisters                                   | 6 <sup>th</sup> Edition (3/05/2012)   |
| SG5C4037 | Keppel Harbour, Tanjong Pagar Terminal and Approaches               | 6 <sup>th</sup> Edition (3/05/2012)   |
| SG5C4038 | Johor Strait – Western Part   | 5 <sup>th</sup> Edition (3/05/2012)   |
| SG5C4039 | Western Approaches to Main Strait                                   | 5 <sup>th</sup> Edition (3/05/2012)   |
| SG5C4041 | Pulau Sebarok to Changi   | 6 <sup>th</sup> Edition (3/05/2012)   |
| SG5C4043 | Kuala Johor and Sungai Johor  | 8 <sup>th</sup> Edition (16/08/2012)  |
| SG5C4044 | Johor Strait – Eastern Part   | 8 <sup>th</sup> Edition (16/08/2012)  |

## II NEW PUBLICATIONS

### SINGAPORE TIDE TABLES YEAR 2013 PUBLISHED ON 1<sup>ST</sup> SEPTEMBER 2012

#### Summary of Publication

This 251-page book contains Tidal Height and Tidal Stream Predictions covering stations in Singapore port waters and along the Malacca and Singapore Straits.

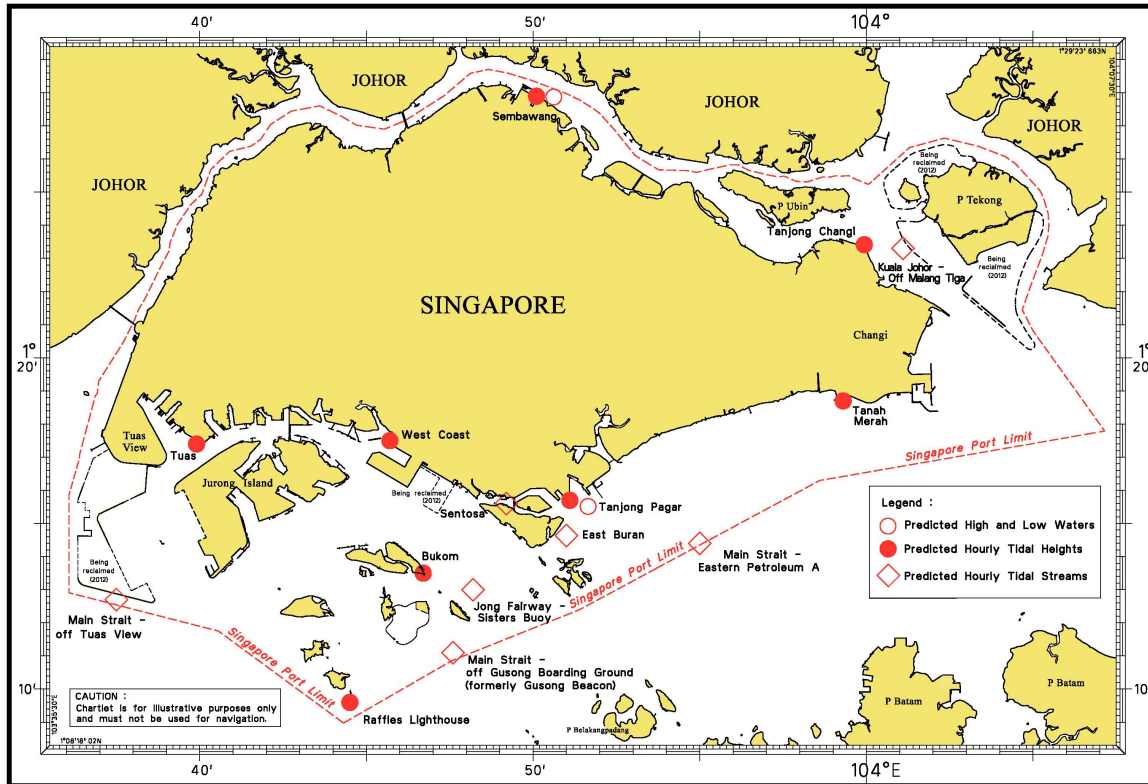
This publication consists of 5 segments.

1. **High and Low Water Predictions** at the following stations:
  - a) Tanjong Pagar
  - b) Sembawang
  
2. **Hourly Tidal Height Predictions** at the following stations:
  - a) Tuas
  - b) Raffles Lighthouse
  - c) West Coast
  - d) Bukom
  - e) Tanjong Pagar
  - f) Tanah Merah
  - g) Tanjong Changi
  - h) Sembawang
  - i) Singapore Strait - Horsburgh Lighthouse
  
3. **Hourly Tidal Stream Predictions** at the following stations:
  - a) Main Strait – off Tuas View
  - b) Jong Fairway – Sisters Buoy
  - c) Main Strait – off Gusong Boarding Ground (formerly Gusong Beacon)
  - d) Sentosa
  - e) East Buran
  - f) Main Strait – Eastern Petroleum A
  - g) Kuala Johor – off Malang Tiga
  
4. **Maximum and Slack Tidal Stream Predictions** at the following stations:
  - a) Malacca Strait – Off The Brothers Light
  - b) Singapore Strait – Selat Phillip
  - c) Singapore Strait – Karang Banteng (Buffalo Rock)
  - d) Singapore Strait - Horsburgh Lighthouse
  
5. **Malacca Strait – High and Low Water Predictions** at the following stations:
  - a) Kedah Pier, Pulau Pinang
  - b) Port Dickson
  - c) Kuala Batu Pahat

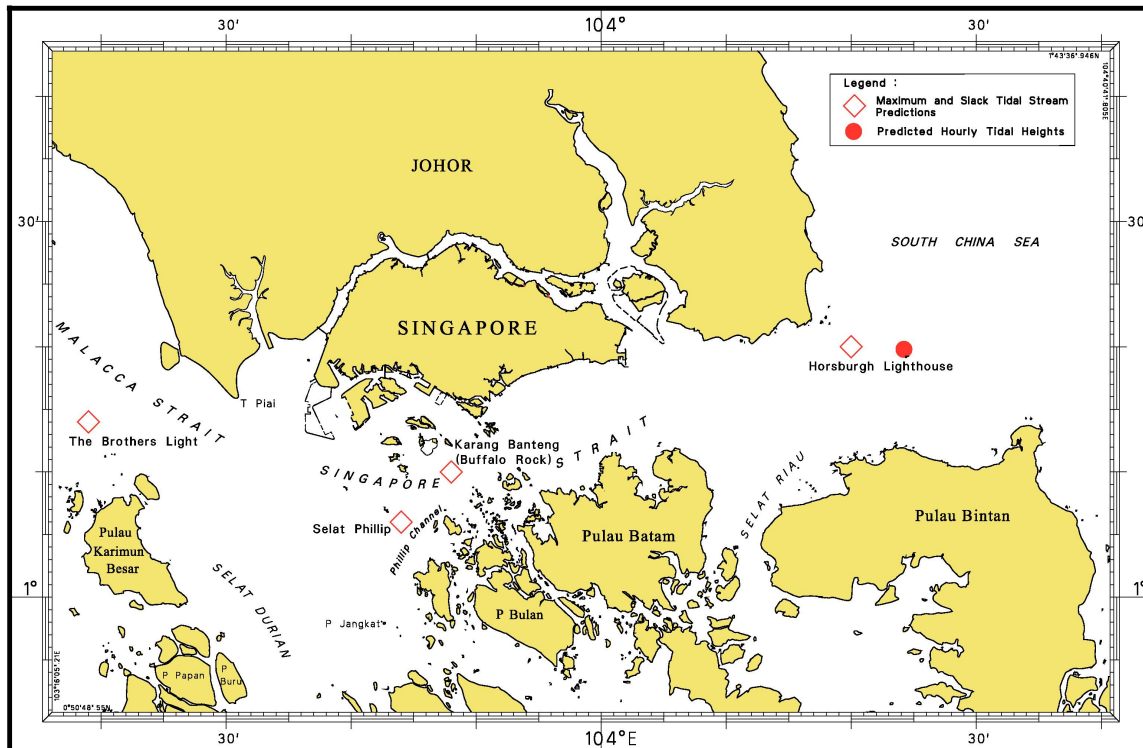
The locations of the above stations are shown in the chartlets below:

## II NEW PUBLICATIONS

### Tidal Prediction Stations within Singapore port waters



### Tidal Prediction Stations in Malacca and Singapore Straits



## II NEW PUBLICATIONS

### Tidal Prediction Stations in Malacca Strait



This publication is available from the following Chart Agents:

1. DPM (Singapore) Pte Ltd
2. E.W. Limer Charts & Publications Pte Ltd
3. Motion Smith

(Please refer Page 22 for details)






## II NEW PUBLICATIONS

### NEW EDITION CHART TO BE PUBLISHED ON JANUARY 2013

Chart Number : CHARTS FOR SMALL CRAFT  
Title : Singapore Strait and Adjacent Waterways – 2013 Edition  
Date Published : January 2013  
Size of chart : 600 x 400 mm  
Remarks : The publication contains 12 Small Craft Charts and related nautical information bound into an atlas measuring 600 x 400 mm. The symbols, abbreviations and term depicted on these charts are consistent with the International Hydrographic Organization Chart Standards and Specifications.  
Symbols for the locations of pleasure craft facilities and areas for sea sport activities such as board sailing, dinghy sailing, keelboat sailing, power-boating and water-skiing are also included and highlighted in red.  
Chart of the same publication Edition 2011/2012 published on 20<sup>th</sup> January 2011 would be superseded.






---

**II**  
**NOTICES TO MARINERS AND CHART CORRECTIONS**



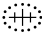



|                 |   |  |                       |
|-----------------|---|--|-----------------------|
| <b>GSP1/SP1</b> | 7 Ed 3/05/12 Last NM 88/2012  | (HD/HY/G00110212)  | <b>*NM 95/2012</b>    |
| <b>Insert</b>   |  <b>Wk</b>         |  | 1°13·71'N 103°37·67'E |
|                 |   | (HD/HE025/122 to 124/2012,<br>HD/HY AA1912912)                   | <b>*NM 96/2012</b>    |
| <b>Insert</b>   | the accompanying block, showing new working limit and buoys centred on:                             |  | 1°15·12'N 103°37·67'E |
|                 |   | (Royal Malaysian Navy Notice No.<br>9/154/2012)                  | <b>NM 97/2012</b>     |
| <b>Insert</b>   |  <b>Wk</b>         |  | 1°21·60'N 104°04·99'E |
|                 |   | (Admiralty Notice No.<br>24/2595/2012)                           | <b>NM 98/2012</b>     |
| <b>Amend</b>    | light-beacon to, <b>Q.22m15M</b>  |  | 1°09·43'N 103°48·83'E |
| <hr/>           |   |  |                       |
| <b>201</b>      | 4 Ed 7/10/10 Last NM 45/2012  | (Peninsular Malaysia Marine<br>Department, Notice No. 36T/2011)  | <b>NM 99/2012</b>     |
| <b>Insert</b>   | <b>(collapsed)</b> at Panjang Selatan Beacon  |  | 1°23·40'N 103°07·85'E |
|                 |  <b>FI(2)10s</b> |  | 1°23·51'N 103°07·77'E |
| <hr/>           |   |  |                       |
| <b>202</b>      | 6 Ed 24/09/09 Last NM 89/2012   | (Admiralty Notice No.<br>24/2595/2012)                           | <b>NM 98/2012</b>     |
| <b>Amend</b>    | light-beacon to, <b>Q.15M</b>   |  | 1°09·43'N 103°48·83'E |
|                 |   | (Marine Department, Peninsular<br>Malaysia Notices No. 36T/2011) | <b>NM 99/2012</b>     |
| <b>Insert</b>   | <b>(collapsed)</b> at Panjang Selatan Beacon  |  | 1°23·40'N 103°07·85'E |
|                 |  <b>FI(2)10s</b> |  | 1°23·51'N 103°07·77'E |
|                 |   | (Royal Malaysian Navy Notice No.<br>9/147/2012)                  | <b>NM 100/2012</b>    |
| <b>Insert</b>   |  <b>PA</b>       |  | 1°17·68'N 104°10·68'E |

## II NOTICES TO MARINERS AND CHART CORRECTIONS

(Marine Department, Peninsular  
Malaysia Notices No. 99/2010)

|                |   |  |                                   |                     |
|----------------|---|--|-----------------------------------|---------------------|
| <b>Insert</b>  |    | <b>FI(2)10s</b>  | 1°17'68"N                         | 104°11'09'E         |
|                |   |  | (HD/DB67/16/2012)                 | <b>NM 101/2012</b>  |
| <b>Replace</b> |    | PA with  PA | 1°10'62"N                         | 104°15'94'E         |
|                |   |  |                                   |                     |
| <b>500</b>     | 6 Ed 7/10/10 Last NM 80/2012  | (Marine Department, Peninsular<br>Malaysia Notices No. 36T/2011)                             |                                   | <b>NM 99/2012</b>   |
| <b>Insert</b>  | <b>(collapsed)</b> at Panjang Selatan Beacon  |  | 1°23'40"N                         | 103°07'85'E         |
|                |    | <b>FI(2)10s</b>  | 1°23'51"N                         | 103°07'77'E         |
|                |   |  | (Port Marine Circular No. 6/2012) | <b>*NM 102/2012</b> |
| <b>Insert</b>  | the accompanying block, showing new anchorages and<br>working limit centred on:     |  | 1°12'74"N                         | 103°40'70'E         |
|                |   |  |                                   |                     |
| <b>501</b>     | 6 Ed 3/05/12 Last NM 80/2012  | (HD/HY/AA1912912)  |                                   | <b>*NM 96/2012</b>  |
| <b>Insert</b>  | the accompanying block, showing new working limit<br>centred on:                    |  | 1°14'90"N                         | 103°37'40'E         |
|                |   | (Admiralty Notice No.<br>24/2595/2012)   |                                   | <b>NM 98/2012</b>   |
| <b>Amend</b>   | light-beacon to, <b>Q.22m15M</b>  |  | 1°09'43"N                         | 103°48'83'E         |
|                |   |  | (HD/HY/F00104512)                 | <b>*NM 103/2012</b> |
| <b>Insert</b>  | depth <b>24</b>   |  | 1°11'59"N                         | 103°47'31'E         |
|                | depth <b>28<sub>3</sub></b> enclosed by 30 metre contour                            |  | 1°11'31"N                         | 103°47'51'E         |
| <b>Delete</b>  | depth <b>24<sub>5</sub></b>   |  | 1°11'59"N                         | 103°47'25'E         |
|                | depth <b>29<sub>9</sub></b> enclosed by 30 metre contour                            |  | 1°11'28"N                         | 103°47'57'E         |
|                |   |  |                                   |                     |
| <b>502</b>     | 6 Ed 3/05/12 Last NM 66/2012  | (Royal Malaysian Navy Notice No.<br>9/154/2012)  |                                   | <b>NM 97/2012</b>   |
| <b>Insert</b>  |  | <b>Wk</b>  | 1°21'60"N                         | 104°04'99'E         |

**II**  
**NOTICES TO MARINERS AND CHART CORRECTIONS**

|                |  |   |                       |
|----------------|--|---|-----------------------|
|                |  | (Royal Malaysian Navy Notice No.<br>9/147/2012) | <b>NM 100/2012</b>    |
| <b>Replace</b> |  PA with  PA |   | 1°17'68"N 104°10'68"E |
|                |  | (HD/DB67/16/2012)                               | <b>NM 101/2012</b>    |
| <b>Replace</b> |  PA with  PA |   | 1°10'62"N 104°15'94"E |
| <hr/>          |  |   |                       |
| <b>503</b>     | 4 Ed 1/04/10 Last NM 67/2012   | (HD/DB67/16/2012)                               | <b>NM 101/2012</b>    |
| <b>Replace</b> |  PA with  PA |   | 1°10'62"N 104°15'94"E |
| <hr/>          |  |   |                       |

**II**  
**TEMPORARY AND PRELIMINARY NOTICES**

**\*(NM 104T/2012) Buoy established at Jurong Aromatic Complex Project off Jurong Island**

**Purpose :** The buoys mark the edge of the shallow patches and guide the barge accordingly.

**Date of installation:** 15<sup>th</sup> September 2012.

**Remarks :** The buoys will be used till **June 2013**.

1. The co-ordinates of buoys JAC 1 and JAC 2 are as follows :

| Buoys | (Co-ordinates: WGS84) |               | Shape         | Light Characteristic |
|-------|-----------------------|---------------|---------------|----------------------|
|       | Latitude (N)          | Longitude (E) |               |                      |
| JAC 1 | 1° 14.40'             | 103° 39.96'   | Yellow pillar | Fl.Y.6s              |
| JAC 2 | 1° 14.38'             | 103° 39.97'   | Yellow pillar | Fl.Y.6s              |

2. **Charts affected :** GSP1, SP1, 4030, 4031, 4038 and 4040.

3. **Caution :** Mariners are advised to navigate with caution.

**Source :** HD/HE025/116 and 117/2012.

**(NM 105T/2012) SOUTH EAST ASIA JAPAN CABLE SYSTEM (SJC) - Cable Installation & Burial (CIB)**

**Purpose :** The SJC submarine cable installation and burial shall be executed through Sector 7 and Sector 8; within the proximities of the Precautionary Area, and in way of the East Bound Traffic Lane of the Traffic Separation Scheme (TSS) of the Singapore Strait.

**Cable Installation Vessel :** 'CS FU HAI'

**Call Sign :** 3EGX3

**Date of work :** With effect from 22<sup>nd</sup> December 2012 to 10<sup>th</sup> January 2013.

**Duration of work :** The cable installation vessel will take up to 6 working days to start and finish the CIB within the stipulated period.

**Operating hours :** Daily, from 0000 hrs to 2400 hrs (including Sundays and Public Holidays).

1. The cable installation and burial operation has position co-ordinates as follows :

| Position    | (Co-ordinates: WGS84) |               | Remarks<br>(Working Hours)   |
|-------------|-----------------------|---------------|------------------------------|
|             | Latitude (N)          | Longitude (E) |                              |
| Start Point | 01° 09.903 N          | 103° 34.832 E | Daily, from 0000 to 2400 Hrs |
| End Point   | 01° 05.833 N          | 103° 31.693 E | Daily, from 0000 to 2400 Hrs |
| Start Point | 01° 05.299 N          | 103° 45.262 E | Daily, from 0000 to 2400 Hrs |
| End Point   | 01° 10.992 N          | 103° 53.850 E | Daily, from 0000 to 2400 Hrs |

**II**  
**TEMPORARY AND PRELIMINARY NOTICES**

2. **Charts affected** : GSP1, SP1, 202, 500, 501, 4039, 4040 and 4041.
3. **Caution** : Mariners are advised
  - a) to navigate with caution.
  - b) to give a wide berth when approaching the cable installation vessel.

**Source** : HD/DB67/18/2012.

---

### III NAVIGATIONAL INFORMATION

**\*(NM 106/2012) SINGAPORE PORT MARINE NOTICES**

The following Port Marine Notices have been shortlisted, as they would be of particular interest to mariners.

These notices can be accessed directly from MPA website:

[http://www.mpa.gov.sg/sites/port\\_and\\_shipping/circulars\\_and\\_notices/port\\_marine\\_notices.page](http://www.mpa.gov.sg/sites/port_and_shipping/circulars_and_notices/port_marine_notices.page)

| <b>PMN No.</b> | <b>Subject</b>   |
|----------------|--|
| 155/2012       | Soil investigation works off Tuas View.  |
| 156/2012       | Construction of Solid Handling Pier and Protection Bund at Ayer Chawan Basin, Jurong Island. |
| 157/2012       | Reclamation of Tuas View Extension.  |
| 160/2012       | Construction of Changi East Finger Extension.  |

**(NM 107/2012) MALAYSIA PORT CIRCULARS**

The following Port Circulars have been shortlisted, as they would be of particular interest to mariners.

These notices can be accessed directly from Malaysia website:

<http://www.marine.gov.my>

| <b>PC No.</b> | <b>Subject</b>  |
|---------------|---|
| 27/2012       | Construction of marine outfall in the West Johor Strait – Duration of works extended. |

**\*(NM 108/2012) SINGAPOREAN PRINT-ON-DEMAND (POD) CHARTS**

Print-On-Demand (POD) Charts are the most up-to-date paper nautical charts printed for navigational use. These nautical charts are produced in accordance with the International Hydrographic Organisation (IHO) chart specifications. These official nautical charts are continually updated to the latest Notices to Mariners before they are printed and sold to users.

These POD Charts include GSP1, SP1, 200, 201, 202, 500, 501, 502 and 503.

**BENEFITS TO OUR CUSTOMERS**

**Convenience**

Customers need not make numerous hand corrections to the nautical charts before use. In addition the updated POD Charts are more accurate and reliable than offset printed charts with hand corrections.

**Clarity**

Clarity in the presentation of updated information as compared to lithographic printed charts, where in some cases there are several overlapping corrections over existing information.

**III**  
**NAVIGATIONAL INFORMATION**

**Coverage**

The POD Charts cover the Malacca and Singapore Straits, from One Fathom Bank to Horsburgh Lighthouse.

---

**III**  
**AMENDMENTS TO PUBLICATIONS**

\*(NM 109/2012) UPDATING OF PUBLICATION "SINGAPORE PORT INFORMATION 2012/2013"

1. Page 127

**CHARACTERISTICS OF AIDS TO NAVIGATION  
WEST JOHOR STRAIT**

Delete the following:

| Name of Buoy | Position<br>Lat.N<br>Long.E<br>Deg Min | Structure,<br>colour & Shape | Light<br>Characteristic | Owner |
|--------------|--|------------------------------|-------------------------|-------|
| TMSI 1 (NUS) | 01°18.080'<br>103°36.937'              | Yellow pillar                | Fl.Y.4s                 | NUS   |
| TMSI 2 (NUS) | 01°20.425'<br>103°37.781'              | Yellow pillar                | Fl.Y.1,4s               | NUS   |

Source: HD/HE025/112 and 113/2012

2. Page 128

**CHARACTERISTICS OF AIDS TO NAVIGATION  
RECLAMATION OFF TUAS VIEW**

Insert the following:

| Name of Buoy   | Position<br>Lat. N<br>Long. E<br>Deg Min | Structure, colour & Shape                      | Light Characteristic | Owner      |
|----------------|--|--|----------------------|------------|
| HS-TVE-01 Buoy | 01°15.087'<br>103°37.551'                | Yellow pillar, radar reflector and 'X' topmark | Fl.Y.3s (sync)       | Hiap Shing |
| HS-TVE-02 Buoy | 01°14.867'<br>103°37.536'                | Yellow pillar, radar reflector and 'X' topmark | Fl.Y.3s (sync)       | Hiap Shing |
| HS-TVE-03 Buoy | 01°14.867'<br>103°37.154'                | Yellow pillar, radar reflector and 'X' topmark | Fl.Y.3s (sync)       | Hiap Shing |

Source: HD/HE025/122,123 and 124/2012

3. Page 168 – Item 32

**WHARVES AND BERTHS  
PULAU BUKOM (SHELL REFINERY)(1°14.0'N, 103°46.1'E)**

Insert the following:

| Berths  | Depth Alongside (Year Surveyed) |              |
|---------|---------------------------------|--------------|
|         | Delete                          | Insert       |
| No. 4   | 11.8m (2011)                    | 11.6m (2012) |
| No. 10  | 15.8m (2011)                    | 15.7m (2012) |
| No. 10A | 3.9m (2011)                     | 3.0m (2012)  |
| No. 10B | 5.9m (2011)                     | 5.6m (2012)  |
| No. 11  | 5.6m (2011)                     | 5.5m (2012)  |
| No. 13  | 11.2m (2011)                    | 10.9m (2012) |

Source: HD/HY/C00105712, C00105912, D00104312

**III**  
**AMENDMENTS TO PUBLICATIONS**

4. Page 173 – Item 40

**JURONG ISLAND – BANYAN BASIN (UNIVERSAL TERMINALS SINGAPORE PTE LTD)**  
**(1°14.5'N, 103°41.5'E)**

Insert the following:

| <b>Berths</b> | <b>Length of Berth</b> | <b>Depth Alongside<br/>(Year Surveyed)</b> | <b>Controlling Depth In<br/>Approaches</b> |
|---------------|------------------------|--|--|
| <b>OMU 15</b> | <b>105m</b>            | <b>10.6m (2007)</b>                        | <b>10.7m</b>                               |
| <b>OMU 16</b> | <b>105m</b>            | <b>11.0m (2007)</b>                        | <b>10.7m</b>                               |
| <b>OMU 17</b> | <b>116m</b>            | <b>10.0m (2007)</b>                        | <b>10.7m</b>                               |

Source: HD/HY/E00105507 and E00105307

5. Page 174 – Item 44

**JURONG ISLAND – BANYAN BASIN (VOPAK TERMINALS SINGAPORE PTE LTD)**  
**(1°15.9'N, 103°41.0'E)**

Insert the following:

| <b>Berths</b> | <b>Length of Berth</b> | <b>Depth Alongside<br/>(Year Surveyed)</b> | <b>Controlling Depth In<br/>Approaches</b> |
|---------------|------------------------|--|--|
| <b>OBV 6</b>  | <b>260m</b>            | <b>16.5m (2012)</b>                        | <b>-</b>                                   |
| <b>OBV 7</b>  | <b>260m</b>            | <b>16.3m (2012)</b>                        | <b>-</b>                                   |

Source: HD/HY/J00105512

---

**IV**  
**REPRINT OF RADIO NAVIGATIONAL WARNINGS**

The following Radio Navigational Warnings have been shortlisted, as they would be of particular interest to mariners.

TT058

BUFFALO ROCK ISOLATED DANGER BUOY FL(2)5S AT POSITION 01°09·90'N 103°48·10'E . TOP MARK IS MISSING AND REPORTED UNLIT.

TT059

BATU BERHANTI BUOY FL(2)5S AT POSITION 01°11·76'N 103°52·51'E IN THE SINGAPORE STRAIT REPORTED UNLIT.

TT063

RACON DELTA BUOY Q(6)LFL 15S IN POSITION 01°03·78'N 103°38·77'E IS REPORTED UNLIT.

TT173

VESSELS IN EAST JOHOR STRAIT ARE ADVISED TO NAVIGATE WITH CAUTION WHEN NEAR THE PROJECT AREAS OFF PULAU TEKONG, CHANGI AND MALANG PAPAN AS SHALLOW WATER AREAS EXIST. VESSELS ARE ADVISED TO KEEP LOOKOUT FOR TUGS AND BARGES NAVIGATING NEAR THE PROJECT AREAS AND PASSENGER FERRIES CROSSING BETWEEN CHANGI AND PULAU TEKONG AND VICINITY OF PASIR GUDANG.

TT931

VESSELS NAVIGATING IN THE SINGAPORE STRAIT ARE REQUESTED NOT TO DIRECT THEIR HIGH INTENSITY SEARCHLIGHTS SKYWARD IN THE VICINITY OF CHANGI AIRPORT TO AVOID DISRUPTION TO AIR NAVIGATION.

TT961

VESSELS INTENDING TO CROSS THE TRAFFIC SEPARATION SCHEME(TSS) OR PRECAUTIONARY AREAS IN THE SINGAPORE STRAIT DURING THE HOURS OF DARKNESS ARE RECOMMENDED TO DISPLAY THE NIGHT SIGNALS CONSISTING OF 3 ALL-ROUND GREEN LIGHTS IN A VERTICAL LINE WITH EFFECT FROM 1ST JULY 2011 AT 0000UTC (0800SGT) AS DETAILED IN MARITIME AND PORT AUTHORITY OF SINGAPORE'S PORT MARINE CIRCULAR, 02 OF 2011 DATED 30 MAY 2011.

-----  
ISSUED BY SINGAPORE PORT OPERATIONS CONTROL CENTRE (as at 25<sup>th</sup> November 2012)

V  
**EXTRACT OF ADMIRALTY NOTICES TO MARINERS  
FOR DUAL BADGED CHARTS**

**These notices can also be accessed directly from UKHO Website:**

<http://www.ukho.gov.uk/ProductsandServices/MaritimeSafety/Pages/NMPublic.aspx>

**4925\* SINGAPORE – Sentosa North-westwards – Depth.**

Source: Maritime and Port Authority of Singapore

**Chart 4040** [ *previous update 4803/12* ] WGS84 DATUM

Insert depth **20** enclosed by 20m contour

1° 15'·60N., 103° 48'·16E.

**Chart 4041** [ *previous update 2951/12* ] WGS84 DATUM

Insert depth **20** enclosed by 20m contour

1° 15'·60N., 103° 48'·16E.

---

Updated to Admiralty Notices to Mariners Edition No. 48 of 2012 dated 29<sup>th</sup> November 2012.

## MPA ENC DISTRIBUTORS

| CONTACT PERSON/<br>DESIGNATION                                     | ADDRESS   | TELEPHONE/FAX NO./EMAIL/WEBSITE   |
|--|---|---|
| ChartWorld GmbH  | Ruhrstrasse 90, 22761 Hamburg,<br>Germany                                   | Tel. No.: +49 40 853 58 6942<br>Fax No.: +49 40 853 58 6949<br>Email: <a href="mailto:sales@chartworld.com">sales@chartworld.com</a>  |
| ChartWorld Asia<br>Pacific Pte Ltd.                                | Frontech Centre 07-01,<br>15 Jalan Kilang Barat,<br>Singapore 159357        | Tel No.: +65 65133500<br><br>Website : <a href="http://www.chartworld.com">http://www.chartworld.com</a>  |
| DPM (Singapore) Pte<br>Ltd   | 1 Maritime Square, #09-72<br>HarbourFront Centre,<br>Singapore 099253       | Tel. No.: +65 6270 4060<br>Fax No.: +65 6276 3858<br>Email: <a href="mailto:sales@dpmsingapore.com.sg">sales@dpmsingapore.com.sg</a><br>Website: <a href="http://www.dpmsingapore.com.sg">http://www.dpmsingapore.com.sg</a>      |
| Maritime Information<br>Systems (MARIS)                            | 52, Telok Blangah Road<br>#01-06, Telok Blangah House,<br>Singapore 058809  | Tel. No.: +65 6276 1472<br>Fax No.: +65 6276 1473<br>Email: : <a href="mailto:support@maris.sg">support@maris.sg</a><br>Website: <a href="http://www.maris.no">http://www.maris.no</a>  |
| Maritime Information<br>Systems AS (MARIS)                         | Danholmen 25, 3128 Notteroy,<br>Norway                                      | Tel. No.: +47 33 30 42 50<br>Fax No.: +47 33 30 42 51<br>Email: : <a href="mailto:sales@maris.no">sales@maris.no</a><br>Website: <a href="http://www.maris.no">http://www.maris.no</a>  |
| Motion Smith   | 15 Jalan Kilang Barat<br>#08-01/05 Frontech Centre,<br>Singapore 159357     | Tel. No.: +65 6220 5098<br>Fax No.: +65 6225 4902<br>Email: <a href="mailto:sales@motsmith.com">sales@motsmith.com</a><br>Website: <a href="http://www.motsmith.com">http://www.motsmith.com</a>                                  |
| Transas Marine Pacific<br>Pte Ltd                                  | Cyber Centre<br>16 & 18 Jalan Kilang Barat<br>Singapore 159358              | Tel. No.: +65 6271 0200<br>Fax No.: +65 6271 7300<br>Email: <a href="mailto:dominic@transas.com.sg">dominic@transas.com.sg</a><br>Website: <a href="http://www.transas.com.sg">http://www.transas.com.sg</a>                      |
| Vector Services Pte<br>Ltd   | 196 Pandan Loop,<br>#06-29 Pantech Business Hub<br>Singapore 128384         | Tel. No.: +65 6777 3602<br>Fax No.: +65 6777 9203<br>Email: <a href="mailto:kwchoy@pacific.net.sg">kwchoy@pacific.net.sg</a>  |
| Japan Hydrographic<br>Association<br>Electronic Charts<br>Division | Daiichi Sogo Bldg, 6F<br>1-6-6, Hanedakuko, Ota-ku<br>Tokyo 144-0041, Japan | Tel. No.: +81 3 5708 7093<br>Fax No.: +81 3 5708 7094<br>Email: <a href="mailto:shimizu-6kj@jha.jp">shimizu-6kj@jha.jp</a><br>Website: <a href="http://www.jha.or.jp/en/jha/">http://www.jha.or.jp/en/jha/</a>                    |
| Jeppesen Norway AS   | P.O Box 212 , N-4371 Egersund,<br>Norway                                    | Tel No.: +47 51 46 4700<br>Fax No: +47 51 46 4701<br>Email: <a href="mailto:license.marine@jeppesen.com">license.marine@jeppesen.com</a><br>Website : <a href="http://www.jeppesen.com/marine">http://www.jeppesen.com/marine</a> |
| PRIMAR<br>STAVANGER  | Lervigsveien 36, P.O Box 60,<br>N-4001 Stavanger, Norway                    | Tel. No.: +47 51 93 9500<br>Fax No.: +47 51 93 9501<br>Email: <a href="mailto:sales@ecc.no">sales@ecc.no</a><br>Website : <a href="http://www.primar.no">http://www.primar.no</a>   |
| The United Kingdom<br>Hydrographic Office                          | Admiralty Way, Taunton,<br>Somerset, TA1 2DN<br>United Kingdom              | Tel. No.: +44 1823 33 7900<br>Fax No.: +44 1823 28 4077<br>Emails: <a href="mailto:ENC.SalesReports@ukho.gov.uk">ENC.SalesReports@ukho.gov.uk</a><br>Website: <a href="http://www.ukho.gov.uk">http://www.ukho.gov.uk</a>         |

**Chart Agents for the Maritime and Port Authority of Singapore**  
**Nautical Charts and Publications**

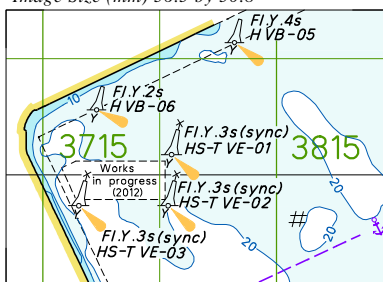
Please approach any of the appointed chart agents to purchase the Singapore Nautical Charts and Publications.

| <b>CHART AGENT</b>                       | <b>ADDRESS</b>  | <b>TELEPHONE/FAX NO./EMAIL/WEBSITE</b>   |
|--|---|--|
| DPM (Singapore) Pte Ltd                  | 1 Maritime Square, #09-72<br>HarbourFront Centre,<br>Singapore 099253                   | Tel. No.: +65 6270 4060<br>Fax No.: +65 6276 3858<br>Email: sales@dpmsingapore.com.sg<br>Website: http://www.dpmsingapore.com.sg                         |
| E.W. Liner Charts & Publications Pte Ltd | 102F, Pasir Panjang Road,<br>#08-01, Citilink Warehouse<br>Complex,<br>Singapore 118530 | Tel. No.: +65 6323 0773<br>Fax No.: +65 6323 0775<br>Email: ewliner@singnet.com.sg<br>Website: http://www.ewliner.com                                    |
| Motion Smith                             | 15 Jalan Kilang Barat<br>#08-01/05 Frontech Centre<br>Singapore 159357                  | Tel. No.: +65 6220 5098<br>(After office hours:+65 8163 9993)<br>Fax No.: +65 6225 4902<br>Email: sales@motsmith.com<br>Website: http://www.motsmith.com |

With effect from 1<sup>st</sup> January 2013, two additional Chart Agents will be appointed.

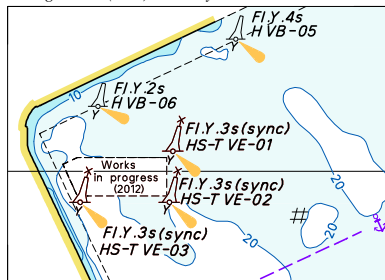
| <b>CHART AGENT</b>                | <b>ADDRESS</b>   | <b>TELEPHONE/FAX NO./EMAIL/WEBSITE</b>  |
|-----------------------------------|--|---|
| Cornes Singapore Pte Ltd          | 10 Anson Road<br>#23-06 International Plaza<br>Singapore 079903  | Tel. No.: +65 6223 8320<br>Fax No.: +65 6223 8321<br>Email: sales9850@cspl.sg<br>Website: http://www.cornes_charts.com                |
| Kelvin Hughes (Singapore) Pte Ltd | 896 Dunearn Road<br>#03-05 Sime Darby Centre<br>Singapore 589472 | Tel. No.: +65 6545 9880<br>Fax No.: +65 6545 8892<br>Email: Clarence.khoh@kelvinhughes.com.sg<br>Website: http://www.kelvinhughes.com |

To accompany Notices to Mariners 96/12  
Image Size (mm) 36.5 by 50.8

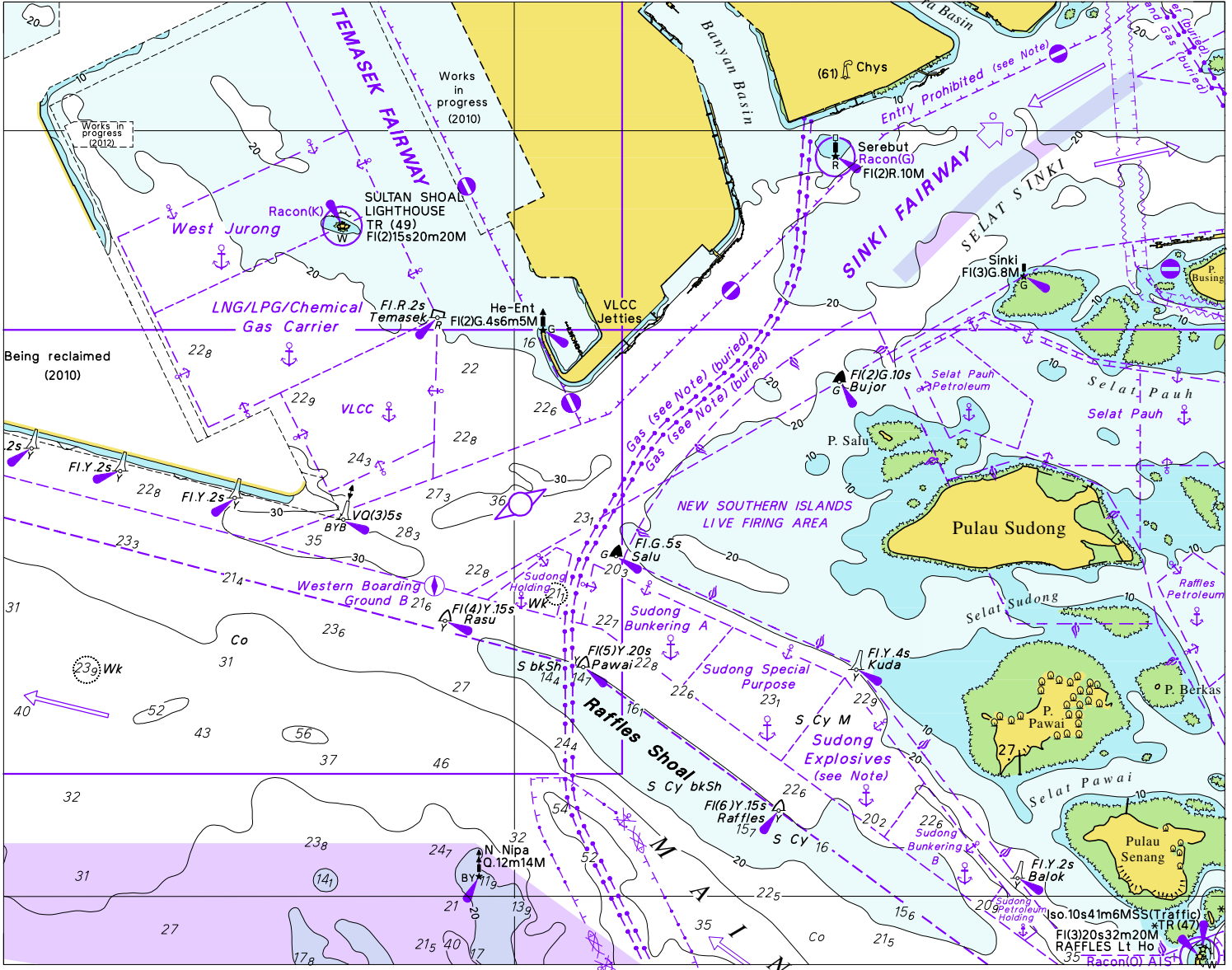


Block for Chart GSP1

To accompany Notices to Mariners 96/12  
Image Size (mm) 36.5 by 50.8

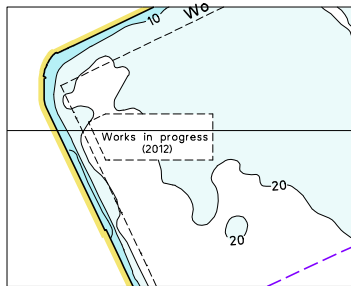


Block for Chart SP1



Block for Chart No. 500

To accompany Notices to Mariners 96/12  
Image Size (mm) 36.9 by 46.5



Block for Chart No. 501

## HYDROGRAPHIC NOTE - Instructions

1. Mariners are requested to notify the Chief Hydrographer, Maritime and Port Authority of Singapore, when new or suspected dangers to navigation are discovered, changes are observed in aids to navigation or where corrections to nautical publications may be necessary. Reports, which cannot be confirmed or are lacking in certain details should not be withheld.
2. Any ambiguities of time, positioning and depth should be stressed and any firm expectation of being able to check the information provided on a following voyage should be mentioned.
3. Mariners using satellite position fixing systems, eg. GPS, should provide details of equipment and datum used (where applicable). Where bearings (true or magnetic) are taken visually or by radar to fix a position, it should include more than two objects in order to provide a check on its accuracy. A position may also be defined by bearing and distance from a conspicuous object eg. beacon, lighthouse etc.
4. The note should include a tracing or a digital image of the chart used and the details should be clearly marked.
5. Echo sounders frequently register greater depths than the advertised maximum depth for the equipment, eg. a trace appearing at 50 metres may be in fact be 550 metres or even 1050 metres for equipment whose maximum depth is 500 metres. Erroneous depths caused by 2nd transmission error can usually be recognised by the following:
  - (a) the tracing being weaker than normal for the depth registered,
  - (b) the trace appearing to pass through the transmission line,
  - (c) the feathery nature of the trace.
6. Upon receipt of a hydrographic note, a Notice to Mariners may be issued. The sender's vessel or name is quoted as the source unless the same information is also received in foreign Notices to Mariners.
7. Reports of shoals, uncharted dangers and defects in aids to navigation may also be made to the appropriate Singapore Port Operations Control Centre on VHF Channels 10, 12, 14, 68 or 73.

## HYDROGRAPHIC NOTE

To:

Chief Hydrographer  
Maritime and Port Authority of Singapore  
460 Alexandra Road PSA Building #20-00  
Singapore 119963

Tel : (65) 6375 1227  
Fax : (65) 6278 7646  
Email : [hydrographic@mpa.gov.sg](mailto:hydrographic@mpa.gov.sg)

**Sender's Contact Details** :

Date : .....

Name of Vessel : .....

Address of Sender : .....

Tel : ..... Fax : .....

Email : .....

**Nature of Observation** :

General Location : .....

Subject : .....

Position : Lat. .... Long. ....

Charts Used : .....

Date & Time of Observation : .....

Details : .....

.....

.....

Attachment : .....

**Equipment Used** :

Type of Position Fixing : ..... GPS / DGPS ..... Others : .....

Type of Echo Sounder : .....

Name and Signature : .....

Ship's/Company's Stamp : .....