



SINGAPOREAN NOTICES TO MARINERS

SECTION	CONTENT	Page
I	Index of Charts & Publications	1
II	New Publications	6
	Notices to Mariners and Chart Corrections	11
	Temporary and Preliminary Notices	13
III	Navigational Information	14
	Amendments to Publications	15
IV	Reprint of Radio Navigational Warnings	16
V	Extract of Admiralty Notices to Mariners for Dual Badged Charts	17

The monthly Notices to Mariners contain corrective information affecting charts published by the Hydrographic Department, Maritime and Port Authority of Singapore. The information contained in these Notices should be updated on the charts affected. Notices under Section II apply only to the particular Singaporean Chart(s) indicated.

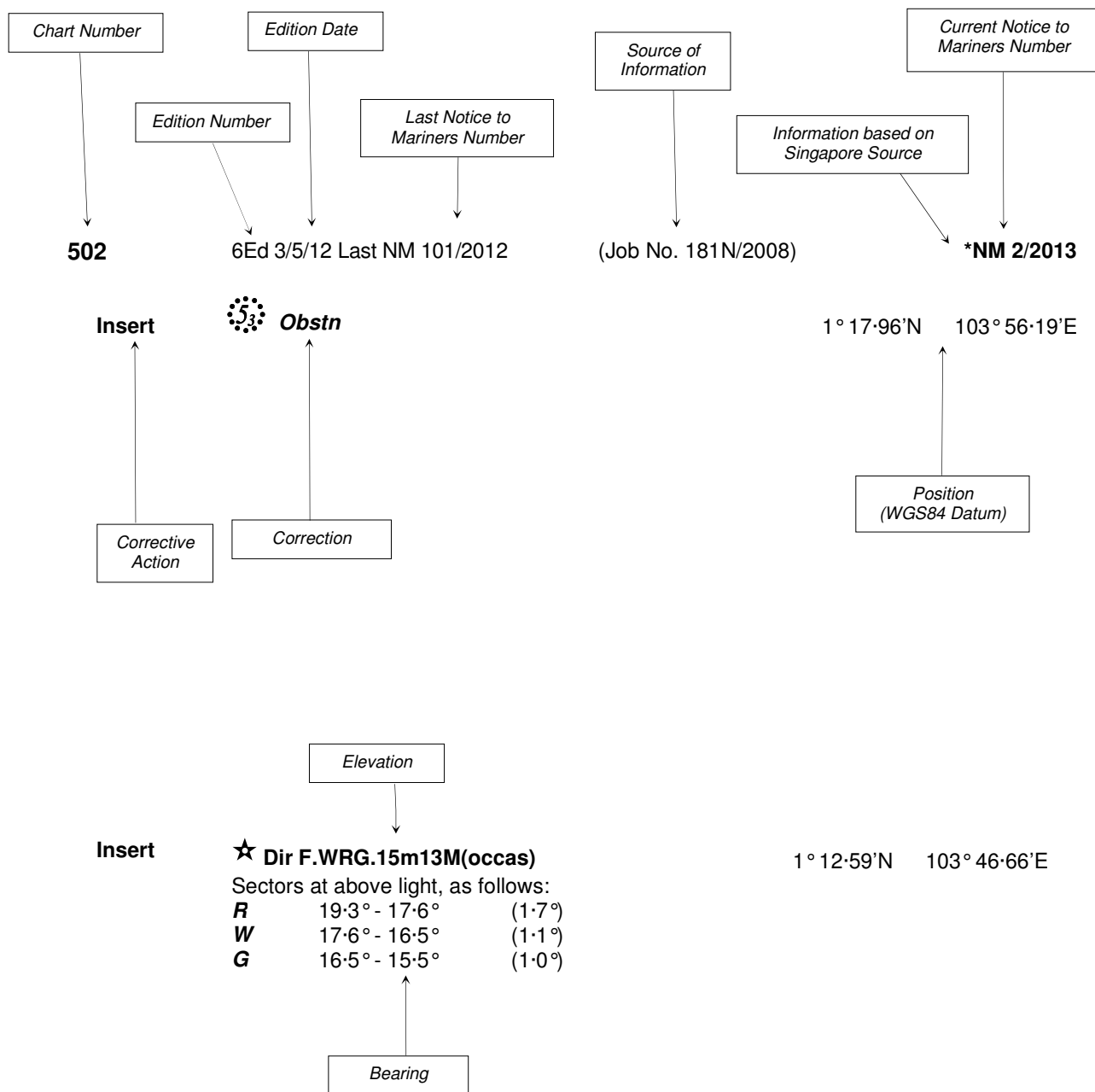
Mariners are requested to notify the Chief Hydrographer, Maritime and Port Authority of Singapore, immediately on the discovery of new dangers or suspected dangers to navigation and of changes or defects in aids to navigation. See Hydrographic Note on back page.

The monthly Singaporean Notices to Mariners can be accessed directly from the MPA website:
[www.mpa.gov.sg/sites/port_and_shipping/circulars_and_notices/singapore_notices_to_mariners\(ntm\).page](http://www.mpa.gov.sg/sites/port_and_shipping/circulars_and_notices/singapore_notices_to_mariners(ntm).page)

Hydrographic Department
Maritime and Port Authority of Singapore
460 Alexandra Road
#20-00 PSA Building
Singapore 119963
Tel: (65) 6375 1227
Fax: (65) 6278 7646

EXPLANATION OF FORMAT

The elements of a typical chart correction are explained below.



Notes:

- a) Notice to Mariners number followed by:
T indicates a Temporary Notice (eg. ***NM 3T/2013**).
P indicates a Preliminary Notice (eg. ***NM 4P/2013**).
- b) Bearings are true reckoned clockwise from 000° to 359°; those relating to lights are from seaward.
- c) Heights and elevations are above Mean High Water Springs.

I
INDEX OF CHARTS AND PUBLICATIONS

INDEX OF AFFECTED CHARTS

DESCRIPTION	NOTICE NO.	PAGE NO.
Index of Singaporean Charts	-	3
Index of Dual Badged Charts	-	4
Index of Singapore Electronic Navigational Chart (ENC)	-	5
Singapore Tide Tables Year 2014	-	6 to 8
Singapore Port Information Year 2014/2015	-	9
Singapore Chart for Small Craft Year 2014	-	10
Singaporean Chart GSP1/SP1	*103,*104,*105	11
Singaporean Chart 201	106,107	11
Singaporean Chart 202	*105	11
Singaporean Chart 500	*104,*105	12
Singaporean Chart 501	*104,*105,*108	12
Temporary and Preliminary Notices	-	13
Singapore Port Marine Notices	*109	14
Singaporean Print-On-Demand (POD) Charts	*110	14
Amendments to Publications	-	15
Reprint of Radio Navigational Warnings	-	16
Extract of Admiralty Notices to Mariners for Dual Badged Charts	-	17
Singapore Electronic Navigational Chart (ENC) Distributors	-	18
Chart Agents for the Maritime and Port Authority of Singapore Nautical Charts and Publications	-	19

*Denotes information are based on Singaporean source.

I
INDEX OF CHARTS AND PUBLICATIONS

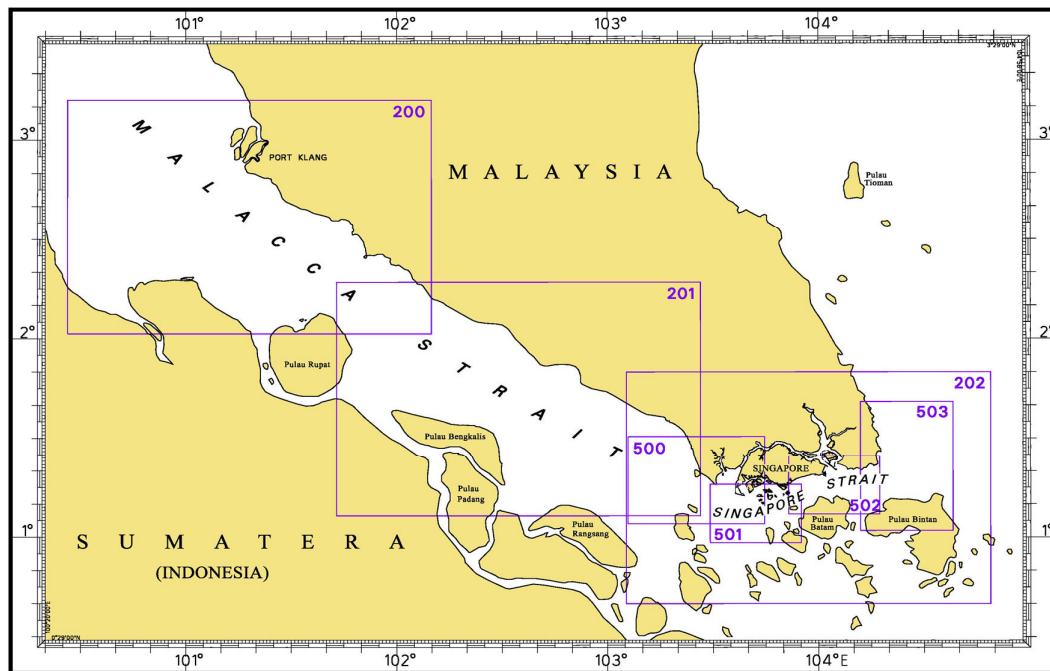
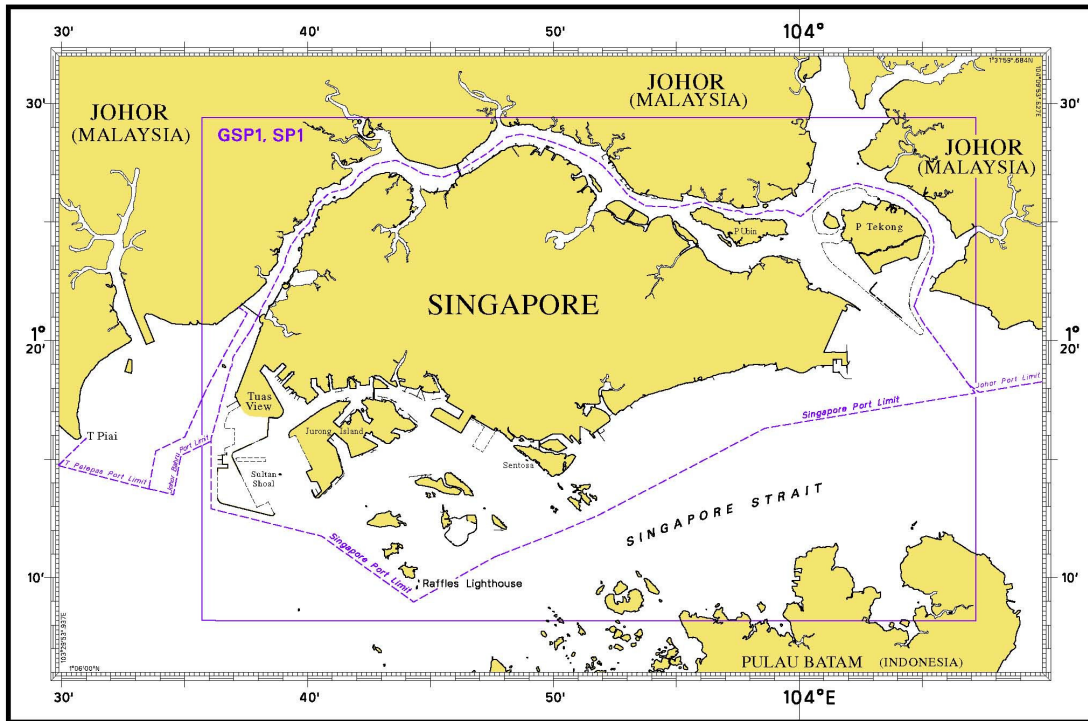
INDEX OF NOTICES

NOTICE NO.	DESCRIPTION	PAGE NO.
-	Index of Singaporean Charts	3
-	Index of Dual Badged Charts	4
-	Index of Singapore Electronic Navigational Chart (ENC)	5
-	Singapore Tide Tables Year 2014	6 to 8
-	Singapore Port Information Year 2014/2015	9
-	Singapore Chart for Small Craft Year 2014	10
*103,*104,*105	Singaporean Chart GSP1/SP1	11
106,107	Singaporean Chart 201	11
*105	Singaporean Chart 202	11
*104,*105	Singaporean Chart 500	12
*104,*105,*108	Singaporean Chart 501	12
-	Temporary and Preliminary Notices	13
*109	Singapore Port Marine Notices	14
*110	Singaporean Print-On-Demand (POD) Charts	14
-	Amendments to Publications	15
-	Reprint of Radio Navigational Warnings	16
-	Extract of Admiralty Notices to Mariners for Dual Badged Charts	17
-	Singapore Electronic Navigational Chart (ENC) Distributors	18
-	Chart Agents for the Maritime and Port Authority of Singapore Nautical Charts and Publications	19

* Denotes information are based on Singaporean source.

I INDEX OF CHARTS AND PUBLICATIONS

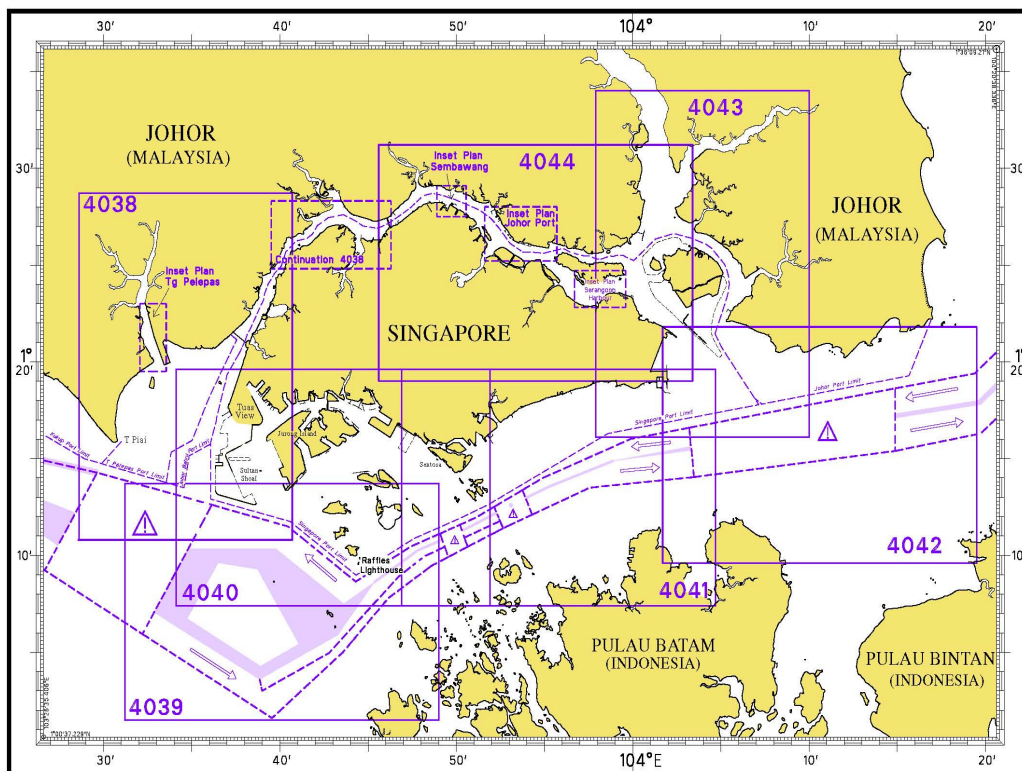
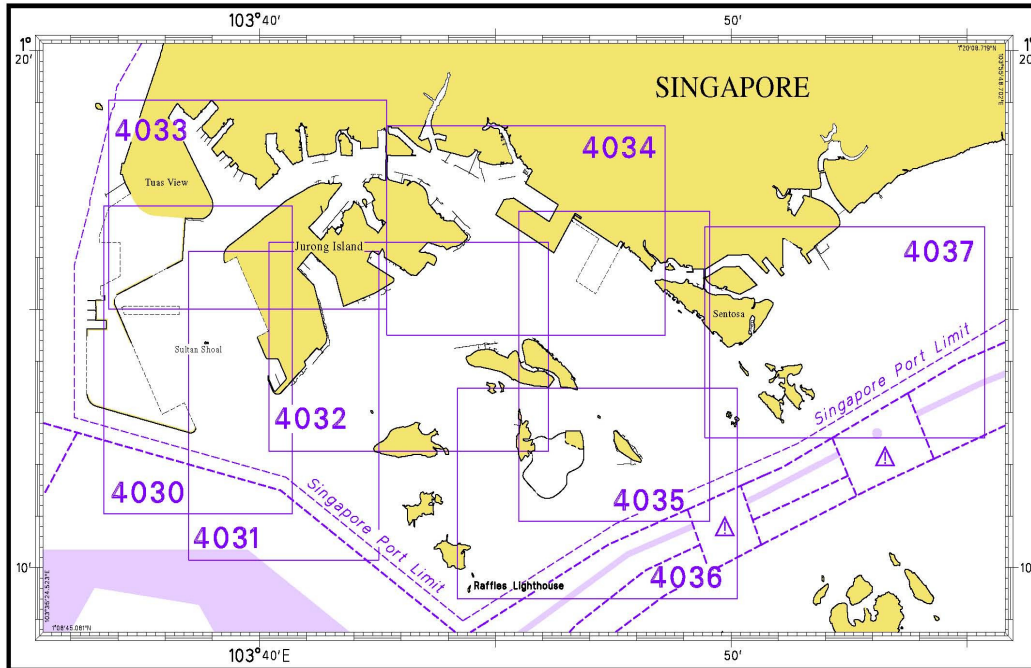
INDEX OF SINGAPOREAN CHARTS



Notes:
Updated SINGAPOREAN Charts are available through our Print-On-Demand (POD) Chart Service. For more information, refer to Section III – Navigational Information. These charts can be purchased from our authorised Chart Agents.

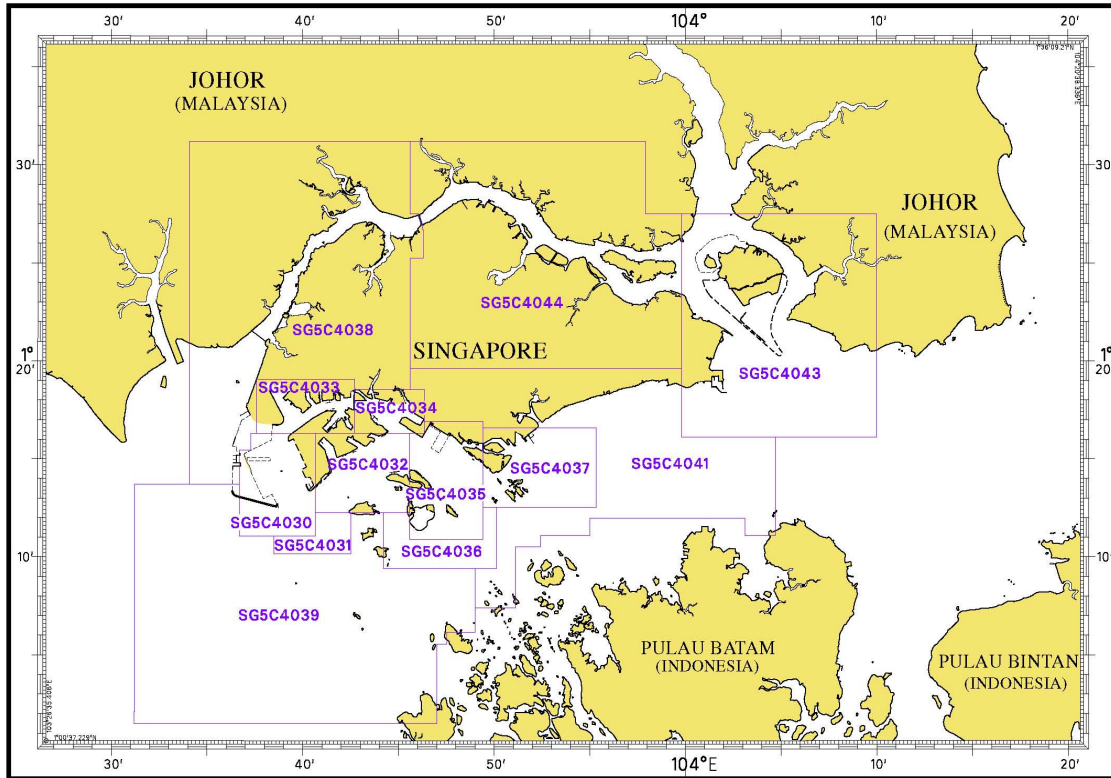
I
INDEX OF CHARTS AND PUBLICATIONS

INDEX OF DUAL BADGED CHARTS



I INDEX OF CHARTS AND PUBLICATIONS

INDEX OF SINGAPORE ELECTRONIC NAVIGATIONAL CHART (ENC)



COVERAGE OF SINGAPORE ELECTRONIC NAVIGATIONAL CHART (ENC)

ENC Name	ENC Coverage	ENC Edition
SG5C4030	West Jurong Anchorages and Temasek Fairway	5 th Edition (3/05/2012)
SG5C4031	Western Approaches to Jurong Island	5 th Edition (3/05/2012)
SG5C4032	Sinki Fairway	7 th Edition (3/05/2012)
SG5C4033	Tuas Bay, West Jurong Channel and Pesek Basin	5 th Edition (3/05/2012)
SG5C4034	East Jurong Channel, Pasir Panjang Terminal and West Keppel Fairway	11 th Edition (11/04/2013)
SG5C4035	Western Anchorages, Jong Fairway and Cruise Bay	14 th Edition (26/09/2013)
SG5C4036	Raffles Lighthouse to The Sisters	6 th Edition (3/05/2012)
SG5C4037	Keppel Harbour, Tanjong Pagar Terminal and Approaches	7 th Edition (25/04/2013)
SG5C4038	Johor Strait – Western Part	6 th Edition (26/09/2013)
SG5C4039	Western Approaches to Main Strait	5 th Edition (3/05/2012)
SG5C4041	Pulau Sebarok to Changi	7 th Edition (9/05/2013)
SG5C4043	Kuala Johor and Sungai Johor	9 th Edition (29/08/2013)
SG5C4044	Johor Strait – Eastern Part	9 th Edition (29/08/2013)

II NEW PUBLICATIONS

SINGAPORE TIDE TABLES YEAR 2014 PUBLISHED ON 4TH SEPTEMBER 2013

Summary of Publication

This 263-page book contains Tidal Height and Tidal Stream Predictions covering stations in Singapore port waters and along the Malacca and Singapore Straits. Two new stations namely Sultan Shoal and Banyan are included in this publication which consists of 5 segments.

1. **High and Low Water Predictions** at the following stations:
 - a) Tanjong Pagar
 - b) Sembawang

2. **Hourly Tidal Height Predictions** at the following stations:
 - a) **Sultan Shoal**
 - b) Raffles Lighthouse
 - c) West Coast
 - d) Bukom
 - e) Tanjong Pagar
 - f) Tanah Merah
 - g) Tanjong Changi
 - h) Sembawang
 - i) Singapore Strait – Horsburgh Lighthouse

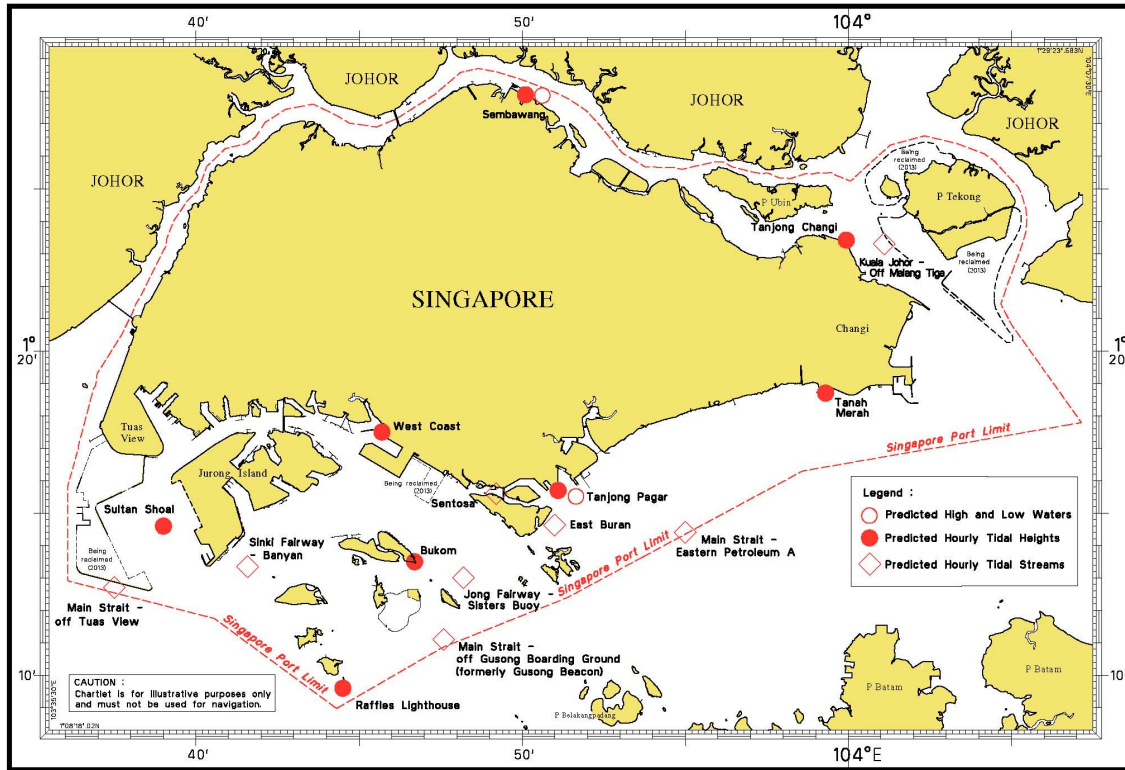
3. **Hourly Tidal Stream Predictions** at the following stations:
 - a) Main Strait – Off Tuas View
 - b) **Sinki Fairway – Banyan**
 - c) Jong Fairway – Sisters Buoy
 - d) Main Strait – Off Gusong Boarding Ground (formerly Gusong Beacon)
 - e) Sentosa
 - f) East Buran
 - g) Main Strait – Eastern Petroleum A
 - h) Kuala Johor – off Malang Tiga

4. **Maximum and Slack Tidal Stream Predictions** at the following stations:
 - a) Malacca Strait – Off The Brothers Light
 - b) Singapore Strait – Selat Phillip
 - c) Singapore Strait – Karang Banteng (Buffalo Rock)
 - d) Singapore Strait – Horsburgh Lighthouse

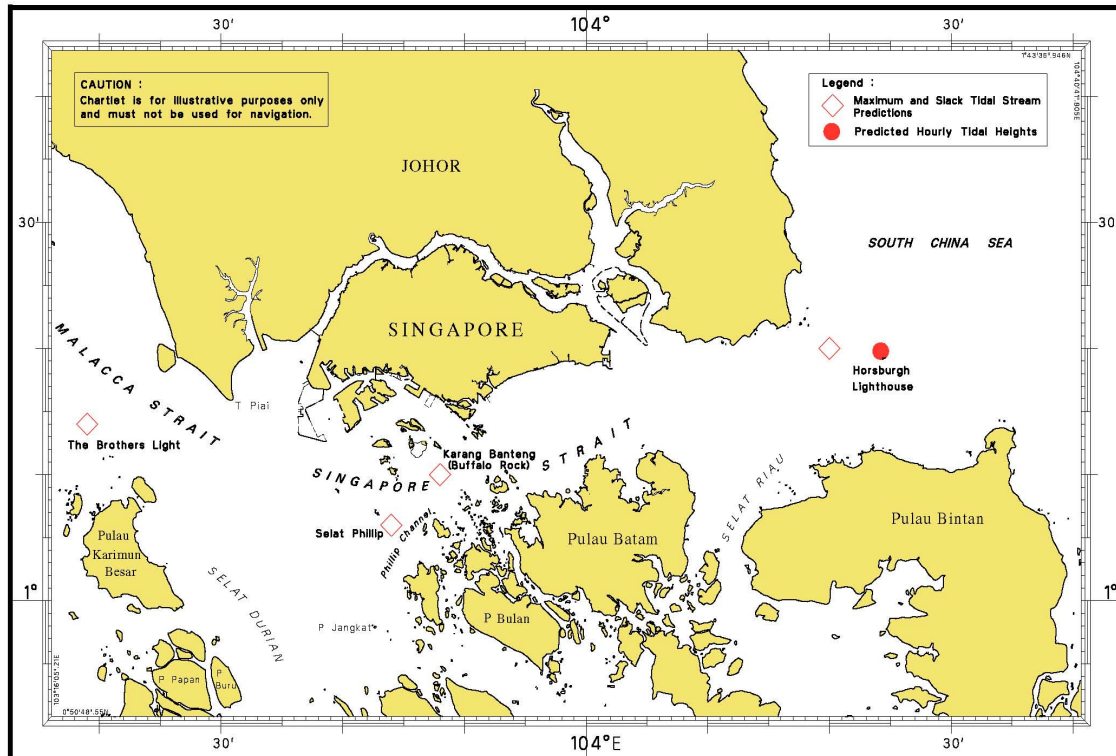
5. **Malacca Strait – High and Low Water Predictions** at the following stations:
 - a) Kedah Pier, Pulau Pinang
 - b) Port Dickson
 - c) Kuala Batu Pahat

The locations of the above stations are shown in the chartlets below:

II NEW PUBLICATIONS Tidal Prediction Stations within Singapore port waters



Tidal Prediction Stations in Malacca and Singapore Straits



II NEW PUBLICATIONS Tidal Prediction Stations in Malacca Strait



This publication is available from the following Chart Agents:

1. Cornes Singapore Pte Ltd
2. DPM (Singapore) Pte Ltd
3. E.W. Liner Charts & Publications Pte Ltd
4. Kelvin Hughes (Singapore) Pte Ltd
5. Motion Smith

Please refer Page 19 for details.

II NEW PUBLICATIONS

NEW EDITION SINGAPORE PORT INFORMATION 2014/2015 TO BE PUBLISHED ON 18th DECEMBER 2013.

Summary of Publication

This publication contains Port Information such as:

1. Routeing and Reporting Information

- a) Straits of Malacca and Singapore – Routeing System.
- b) Mandatory Ship Reporting In the Straits of Malacca and Singapore – Straitrep.
- c) Rules for vessels navigating during hours of darkness through the Straits of Malacca and Singapore (Recommendatory Measure).
- d) Revised reporting procedures for notification and confirmation of a vessel's arrival in Singapore
- e) Amendment to reporting procedures for vessels manoeuvring in port.
- f) Guide to VHF communication in port and Singapore Strait
- g) VHF Radio Telephone reporting Procedures for vessel manoeuvring within the Traffic Information Area in the East Johor Strait.
- h) Tall vessels' movements in the port waters surrounding Changi Airport.
- i) Height Restricted Areas in port.

2. Pilotage and Pilotage Exemption Information

3. Port Clearances and Reporting

- a) Port health clearance procedures for vessels arriving in Singapore.
- b) Port clearance formalities for arriving and departing vessels.
- c) Reporting of Marine incidents in port.
- d) Dissemination of passage plan to shipmasters.
- e) Conduct of mandatory Port Limit courses.
- f) Facilities for the collection of garbage from ships in Singapore.
- g) Singapore Port Dues.

4. Navigational Information

- a) Anchorages and fairways, least depths of anchorages in the port.
- b) The use of canoes and kayaks within the port limits of Singapore.
- c) Depths of Navigational channels, fairways, rivers and basins.
- d) Vertical and safe overhead clearances under bridges and aerial cableway.

5. Information on Aids to Navigation

- a) IALA Maritime Buoyage System
- b) Characteristics of Aids to Navigation – List of beacons, buoys and lighthouses.

6. Communication – International Code of Signals

7. Information on Wharves, Docks and Berths

8. Nautical Services and Products

- a) Index and chart catalogue of Singaporean and Dual Badged charts.
- b) Agents for Maritime and Port Authority of Singapore publications.
- c) Singapore Electronic Navigational Charts (ENC) Catalogue and Electronic Navigational Charts Distributors.

To Whom Will It Be Useful?

Mariners, shipping community, port users and other interested users.

Frequency / Year of Publication

Once every 2 years.

This publication would be available from the following Chart Agents:







- 1) Cornes (Singapore) Pte Ltd
- 2) DPM (Singapore) Pte Ltd
- 3) E.W. Liner Charts & Publications Pte Ltd
- 4) Kelvin Hughes (Singapore) Pte Ltd
- 5) Motion Smith

II NEW PUBLICATIONS

NEW EDITION CHART TO BE PUBLISHED ON 2ND JANUARY 2014

Chart Number : CHARTS FOR SMALL CRAFT
Title : Singapore Strait and Adjacent Waterways – 2014 Edition
Date Published : 2nd January 2014
Size of chart : 600 x 400 mm
Remarks : The publication contains 12 Small Craft Charts and related nautical information bounded into an atlas. The symbols, abbreviations and term depicted on these charts are consistent with the International Hydrographic Organization Chart Standards and Specifications.
(Refer MPA website http://www.mpa.gov.sg/sites/global_navigation/publications/chart1.page)
Symbols for the locations of pleasure craft facilities and areas for sea sport activities such as board sailing, dinghy sailing, keelboat sailing, power-boating and water-skiing are also included and highlighted in red.
Chart of the same publication Edition 2013 published on 3rd January 2013 would be superseded.

II
NOTICES TO MARINERS AND CHART CORRECTIONS

GSP1/SP1	8 Ed 16/05/13 Last NM 93/2013	(HD/HE025/214 & 215/2013)	*NM103/2013
Insert	 Fl. Y. 6s (sync) TK-MB5		1° 22·44'N 104° 02·17'E
	 Fl. Y. 6s (sync) TK-MB6		1° 22·57'N 104° 02·03'E
		(Port Marine Notice No. 145/2013)	*NM104/2013
Insert	dashed line, joining from:		1° 15·33'N 103° 37·09'E 1° 15·33'N 103° 38·77'E 1° 14·93'N 103° 38·77'E 1° 14·65'N 103° 38·16'E 1° 14·65'N 103° 37·66'E 1° 14·65'N 103° 37·15'E
	legend ' Works in progress (2013) ' centred at:		1° 15·23'N 103° 37·90'E
Insert	 Fl. Y. 2s (sync) F2-TVE-01		1° 14·93'N 103° 38·77'E
	 Fl. Y. 2s (sync) F2-TVE-02		1° 14·65'N 103° 38·16'E
	 Fl. Y. 2s (sync) F2-TVE-03		1° 14·65'N 103° 37·66'E
		(HD/HE025/216/2013)	*NM105/2013
Amend	range of light to, 15M		1° 14·38'N 103° 38·88'E
<hr/>			
201	4 Ed 7/10/10 Last NM 80/2013	(Royal Malaysian Navy Notice No. 10/162/2013)	NM 106/2013
Insert	 Wk		1° 57·70'N 102° 10·60'E
		(Royal Malaysian Navy Notice No. 10/161/2013)	NM 107/2013
Insert	under water pipeline '-----' joining	(a)	2° 08·54'N 102° 21·49'E
	legend, Water along:	(b)	2° 06·86'N 102° 19·96'E
		(a) - (b) above	
Insert	under water pipeline '-----' joining	(a)	2° 13·09'N 102° 11·74'E
	legend, Water along:	(b)	2° 11·60'N 102° 12·18'E
		(a) - (b) above	
<hr/>			
202	7 Ed 26/09/13 Last NM 97/2013	(HD/HE025/216/2013)	*NM 105/2013
Amend	range of light to, 15M		1° 14·38'N 103° 38·88'E

II
NOTICES TO MARINERS AND CHART CORRECTIONS

500	7 Ed 26/09/13 New Edition	(Port Marine Notice No. 145/2013)	*NM 104/2013
Insert	dashed line, joining from:		1° 15·33'N 103° 37·09'E 1° 15·33'N 103° 38·77'E 1° 14·93'N 103° 38·77'E 1° 14·65'N 103° 38·16'E 1° 14·65'N 103° 37·66'E 1° 14·65'N 103° 37·15'E
	legend ' Works in progress (2013) ' at:		1° 15·18'N 103° 37·80'E
Amend	range of light to, 15M	(HD/HE025/216/2013)	*NM 105/2013 1° 14·38'N 103° 38·88'E
<hr/>			
501	6 Ed 3/05/12 Last NM 92/2013	(Port Marine Notice No. 145/2013)	*NM 104/2013
Insert	dashed line, joining from:		1° 15·33'N 103° 37·09'E 1° 15·33'N 103° 38·77'E 1° 14·93'N 103° 38·77'E 1° 14·65'N 103° 38·16'E 1° 14·65'N 103° 37·66'E 1° 14·65'N 103° 37·15'E
	legend ' Works in progress (2013) ' at:		1° 15·18'N 103° 37·80'E
		(HD/HE025/216/2013)	*NM 105/2013
Amend	range of light to, 15M		1° 14·38'N 103° 38·88'E
		(HD/HY Code AA1908413)	*NM 108 /2013
Insert	dashed line, joining from:		1° 14·89'N 103° 37·52'E 1° 14·89'N 103° 38·30'E 1° 15·06'N 103° 38·30'E 1° 15·06'N 103° 37·52'E
	legend ' Works in progress (2013) ' at:		1° 14·99'N 103° 37·70'E
Delete	dashed line, joining from:		1° 14·89'N 103° 37·52'E 1° 15·06'N 103° 37·52'E
Delete	legend ' Works in progress (2012) ' at:		1° 14·98'N 103° 37·34'E

II
TEMPORARY AND PRELIMINARY NOTICES

NIL

III NAVIGATIONAL INFORMATION

***(NM 109/2013) SINGAPORE PORT MARINE NOTICES**

The following Port Marine Notices have been shortlisted, as they would be of particular interest to mariners.

These notices can be accessed directly from MPA website:
www.mpa.gov.sg/sites/port_and_shipping/circulars_and_notices/port_marine_notices.page

PMN No.	Subject
145/2013	Construction of an Offshore containment bund off Tuas View.
149/2013	Debris clearing at secondary SLNG Terminal, Jurong Island.
150/2013	Construction of Jetty 2 at Jurong Island
155/2013	Repair and restoration work to existing seawall at Sungei Sembawang.
156/2013	Core penetration test for coastal development off Tuas View.

***(NM 110/2013) SINGAPOREAN PRINT-ON-DEMAND (POD) CHARTS**

Print-On-Demand (POD) Charts are the most up-to-date paper nautical charts printed for navigational use. These nautical charts are produced in accordance with the International Hydrographic Organisation (IHO) chart specifications. These official nautical charts are continually updated to the latest Notices to Mariners before they are printed and sold to users.

These POD Charts include 200, 201, 202, 500, 501, 502 and 503.

BENEFITS TO OUR CUSTOMERS

Convenience

Customers need not make numerous hand corrections to the nautical charts before use. In addition the updated POD Charts are more accurate and reliable than offset printed charts with hand corrections.

Clarity

Clarity in the presentation of updated information as compared to lithographic printed charts, where in some cases there are several overlapping corrections over existing information.

Coverage

The POD Charts cover the Malacca and Singapore Straits, from One Fathom Bank to Horsburgh Lighthouse.

III
AMENDMENTS TO PUBLICATIONS

NIL

IV
REPRINT OF RADIO NAVIGATIONAL WARNINGS

The following Radio Navigational Warnings have been shortlisted, as they would be of particular interest to mariners.

TT026 (AMENDED ON 07 OCT 13)

TUAS RECLAMATION WORKING AREA AT WESTERN PART OF SINGAPORE PORT ARE MARKED BY BUOYS (REF. PMN: 54/2013, 119/2013).

TT076

RACON DELTA BUOY Q(6)LF15S IN 01°03.781'N 103°38.770'E IS UNLIT.

TT112

GERITA BEACON FI(2)10S IN POSITION LAT 01°13.417'N LONG 103°43.483'E IS REPORTED DAMAGED. VESSELS TO NAVIGATE WITH CAUTION.

TT117

BUFFALO ROCK BUOY FL(2)5S IN THE DEEP WATER ROUTE OF SINGAPORE STRAIT IN POSITION 01°09.85'N 103°48.10'E IS UNLIT.

TT131

SINGAPORE GOVERNMENT VESSEL REPORTED THAT ISOLATED DANGER BUOY AT POSITION 01°27.78'N, 104°27.19'E WAS FOUND UNLIT. MARINERS ARE ADVISED TO KEEP CLEAR OF THE AREA AND TO NAVIGATE WITH CAUTION.

TT135

RACON TK Q(6) + LFI 15 SECS IN POSITION 01°05.960'N 103°43.210'E IS REPORTED UNLIT.

TT173

VESSELS IN EAST JOHOR STRAIT ARE ADVISED TO NAVIGATE WITH CAUTION WHEN NEAR THE PROJECT AREAS OFF PULAU TEKONG, CHANGI AND MALANG PAPAN AS SHALLOW WATER AREAS EXIST. VESSELS ARE ADVISED TO KEEP LOOKOUT FOR TUGS AND BARGES NAVIGATING NEAR THE PROJECT AREAS AND PASSENGER FERRIES CROSSING BETWEEN CHANGI AND PULAU TEKONG AND VICINITY OF PASIR GUDANG.

TT961

VESSELS INTENDING TO CROSS THE TRAFFIC SEPARATION SCHEME(TSS) OR PRECAUTIONARY AREAS IN THE SINGAPORE STRAIT DURING THE HOURS OF DARKNESS ARE RECOMMENDED TO DISPLAY THE NIGHT SIGNALS CONSISTING OF 3 ALL-ROUND GREEN LIGHTS IN A VERTICAL LINE WITH EFFECT FROM 1ST JULY 2011 AT 010000UTC (0800SGT) AS DETAILED IN MARITIME AND PORT AUTHORITY OF SINGAPORE'S PORT MARINE CIRCULAR, 02 OF 2011 DATED 30 MAY 2011.

ISSUED BY SINGAPORE PORT OPERATIONS CONTROL CENTRE (as at 24th November 2013)

V
**EXTRACT OF ADMIRALTY NOTICES TO MARINERS
 FOR DUAL BADGED CHARTS**

These notices can also be accessed directly from UKHO Website:

www.ukho.gov.uk/ProductsandServices/MaritimeSafety/Pages/NMPublic.aspx

**4817* SINGAPORE – Kuala Johor and East Jurong Channel – Oiltanking Singapore Ltd - Dredged depths.
 Cautionary note.**

Source: Maritime and Port Authority of Singapore

Chart 4034 [*previous update 4303/13*] WGS84 DATUM

Amend dredged depth to, **14.5m (2013)**, centred on: 1° 16'·705N., 103° 44'·266E.

dredged depth to, **14.3m (2013)**, centred on: 1° 16'·758N., 103° 44'·211E.

Chart 4044 [*previous update New Edition 29/08//2013*] WGS84 DATUM

Insert the accompanying block, showing amendments to cautionary note, centred on: 1° 29'·04N., 103° 46'·20E.

**5009* SINGAPORE - Jurong Island - Seraya Power Station North-north-eastwards and Tuas View - Tuas Jetty
 South-south-westwards - Light-beacon. Buoyage.**

Light List Vol. F, 2013/14, 1700.74

Source: Maritime and Port Authority of Singapore


Chart 4034 [*previous update 4817/13*] WGS84 DATUM

Insert  Fl.Y.2s4m4M PLP-1 1° 17'·279N., 103° 43'·624E.

Chart 4038 [*previous update New Edition 26/09/2013*] WGS84 DATUM

Delete  Fl.Y.8s H VB-10 1° 16'·68N., 103° 36'·59E.

Chart 4040 [*previous update 4412/13*] WGS84 DATUM

Delete  Fl.Y.8s H VB-10 1° 16'·68N., 103° 36'·59E.

 Fl.G.2s PKHDB-22 1° 14'·73N., 103° 36'·29E.

Updated to Admiralty Notices to Mariners Edition No. 48 of 2013 dated 28th November 2013.

To accompany Notice to Mariners 4817/13. Image Size (mm) 35 by 85.5

	Within the Singapore Port Limit, no vessel shall, except in an emergency, anchor in an area outside its appropriate designated anchorage.
29'	RESTRICTED AREAS (1°20'5N 104°02'4E and 1°22'7N 104°00'6E)
	Entry into these areas is prohibited to all vessels over 15 metres high.
	ENTRY PROHIBITED
	(1°28'0N 103°50'2E and 1°23'4N 104°00'0E)

Block for Chart No 4044

MPA ENC DISTRIBUTORS

ENC DISTRIBUTOR	ADDRESS	TELEPHONE/FAX NO./EMAIL/WEBSITE
ChartWorld GmbH	Atlantic Haus, Zirkusweg 1 D-20359 Hamburg Germany	Tel. No.: +49 40 853 58 6942 Fax No.: +49 40 853 58 6949 Email: sales@chartworld.com
ChartWorld Asia Pacific Pte Ltd.	Frontech Centre 07-01, 15 Jalan Kilang Barat, Singapore 159357	Tel No.: +65 6513 3500 Website : http://www.chartworld.com http://www.ecdis-as-a-service.com
DPM (Singapore) Pte Ltd	2 Boon Leat Terrace, #05-02/03 Harbourside 2, Singapore 119844	Tel. No.: +65 6270 4060 Fax No.: +65 6276 3858 Email: sales@dpmsingapore.com.sg Website: http://www.dpmsingapore.com.sg
Maritime Information Systems (MARIS)	52, Telok Blangah Road #01-06, Telok Blangah House, Singapore 058809	Tel. No.: +65 6276 1472 Fax No.: +65 6276 1473 Email: : support@maris.sg Website: http://www.maris.no
Maritime Information Systems AS (MARIS)	Danholmen 25, 3128 Notteroy, Norway	Tel. No.: +47 33 30 42 50 Fax No.: +47 33 30 42 51 Email: : sales@maris.no Website: http://www.maris.no
Motion Smith	15 Jalan Kilang Barat #08-01/05 Frontech Centre, Singapore 159357	Tel. No.: +65 6220 5098 Fax No.: +65 6225 4902 Email: sales@motsmith.com Website: http://www.motsmith.com
Transas Marine Pacific Pte Ltd	Cyber Centre 16/18 Jalan Kilang Barat Off Jalan Bukit Merah Singapore 159358	Tel. No.: +65 6271 0200 Fax No.: +65 6271 7300 Email: navigation.asia@transas.com Website: http://www.transas.com
Japan Hydrographic Association (Electronic Charts Division)	Daiichi Sogo Bldg, 6F 1-6-6, Hanedakuko, Ota-ku Tokyo 144-0041, Japan	Tel. No.: +81 3 5708 7093 Fax No.: +81 3 5708 7094 Email: shimizu-6kj@jha.jp Website: http://www.jha.or.jp/en/jha/
Jeppesen Norway AS	P.O Box 212 , N-4371 Egersund, Norway	Tel No.: +47 51 46 4700 Fax No: +47 51 46 4701 Email: license.marine@jeppesen.com Website : http://www.jeppesen.com/marine
PRIMAR STAVANGER	Lervigsveien 36, P.O Box 60, N-4001 Stavanger, Norway	Tel. No.: +47 51 93 9500 Fax No.: +47 51 93 9501 Email: sales@ecc.no Website : http://www.primar.no
The United Kingdom Hydrographic Office	Admiralty Way, Taunton, Somerset, TA1 2DN United Kingdom	Tel. No.: +44 1823 33 7900 Fax No.: +44 1823 28 4077 Emails: ENC.SalesReports@ukho.gov.uk Website: http://www.ukho.gov.uk

Chart Agents for the Maritime and Port Authority of Singapore
Nautical Charts and Publications

Please approach any of the appointed chart agents to purchase the Singapore Nautical Charts and Publications.

CHART AGENT	ADDRESS	TELEPHONE/FAX NO./EMAIL/WEBSITE
Cornes (Singapore) Pte Ltd	10 Anson Road #23-06/6A International Plaza Singapore 079903	Tel. No.: +65 6223 8320 Fax No.: +65 6223 8321 Email: sales9850@cspl.sg Website: http://www.cornes-charts.com
DPM (Singapore) Pte Ltd	2 Boon Leat Terrace, #05-02/03 Harbourside 2, Singapore 119844	Tel. No.: +65 6270 4060 Fax No.: +65 6276 3858 Email: sales@dpmsingapore.com.sg Website: http://www.dpmsingapore.com.sg
E.W. Liner Charts & Publications Pte Ltd	102F, Pasir Panjang Road, #08-01, Citilink Warehouse Complex, Singapore 118530	Tel. No.: +65 6323 0773 Fax No.: +65 6323 0775 Email: ewliner@singnet.com.sg Website: http://www.ewliner.com
Kelvin Hughes (Singapore) Pte Ltd	896 Dunearn Road #03-05 Sime Darby Centre Singapore 589472	Tel. No.: +65 6545 9880 Fax No.: +65 6545 8892 Email: leslie.khoo@kelvinhughes.com.sg Website: http://www.kelvinhughes.com
Motion Smith	15 Jalan Kilang Barat #08-01/05 Frontech Centre Singapore 159357	Tel. No.: +65 6220 5098 (After office hours:+65 8163 9993) Fax No.: +65 6225 4902 Email: sales@motsmith.com Website: http://www.motsmith.com