



SINGAPOREAN NOTICES TO MARINERS

SECTION	CONTENT	Page
I	Index of Charts & Publications	3
II	New Charts & Publications	11
	Notices to Mariners and Chart Corrections	15
	Temporary and Preliminary Notices	16
III	Navigational Information	17
	Amendments to Publications	18
IV	Reprint of Radio Navigational Warnings	20
V	Extract of Admiralty Notices to Mariners for Dual-Badged Charts	21

The monthly Notices to Mariners contain information required to keep charts and publications published by the Hydrographic Department, Maritime and Port Authority of Singapore up-to-date.

Mariners are requested to notify the Chief Hydrographer, Maritime and Port Authority of Singapore, immediately of the discovery of new or suspected dangers to navigation, observed changes to aids to navigation and ways Singaporean Charts and Publications can be improved. The Hydrographic Note on the back page should be used for this purpose.

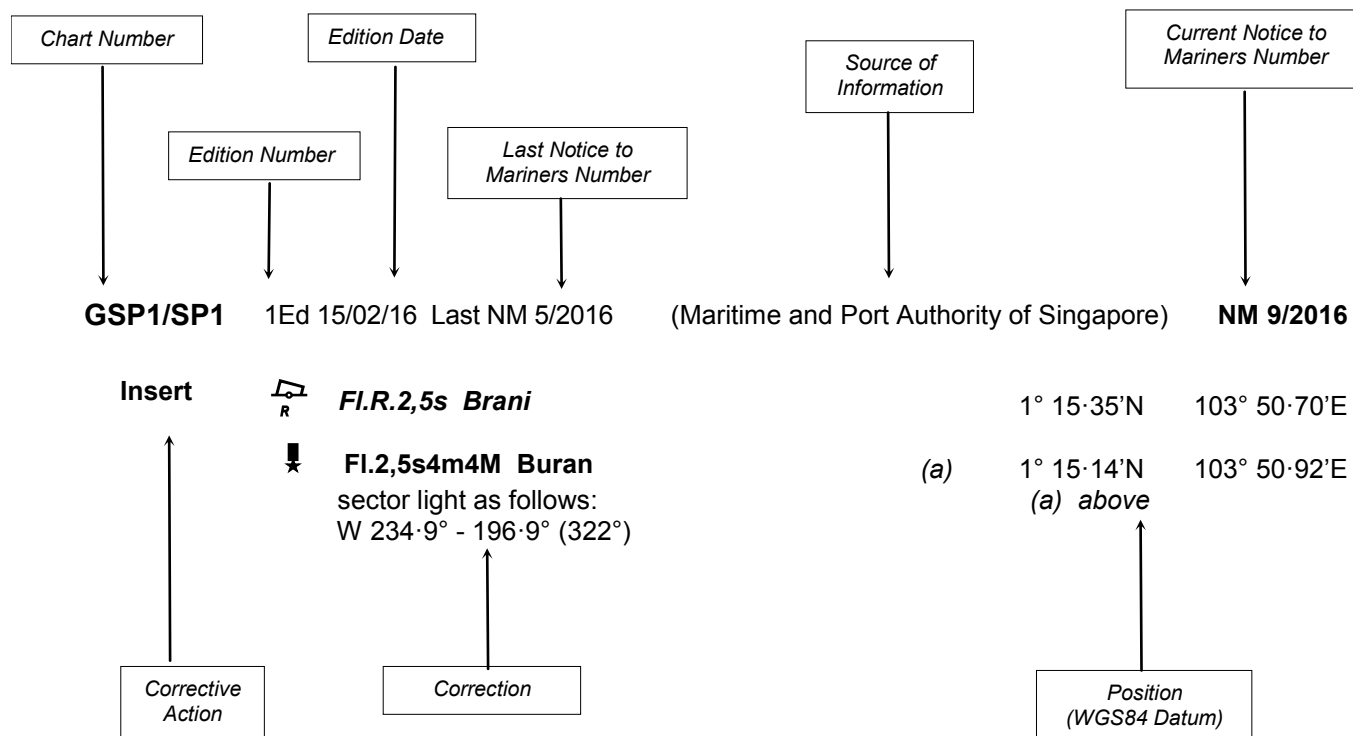
The monthly Singaporean Notices to Mariners can be accessed directly from the MPA website:

<http://www.mpa.gov.sg/web/portal/home/port-of-singapore/circulars-and-notices/singapore-notices-to-mariners-ntm>

Hydrographic Department
Maritime and Port Authority of Singapore
7B Keppel Road
#20-00 Tanjong Pagar Complex
Singapore 089055
Tel : (65) 6325 2027
Fax : (65) 6226 1076
Email : hydrographic@mpa.gov.sg
Website : www.mpa.gov.sg

EXPLANATION OF FORMAT

The elements of a typical chart correction are explained below.



Notes:

a) Notice to Mariners number followed by:

T indicates a Temporary Notice (eg. **NM 3T/2016**).

P indicates a Preliminary Notice (eg. **NM 4P/2016**).

b) Bearings are true reckoned clockwise from 000° to 359°; those relating to lights are from seaward.

c) Heights and elevations are above Mean High Water Springs.

I
INDEX OF CHARTS AND PUBLICATIONS

INDEX OF AFFECTED CHARTS

DESCRIPTION	NOTICE NO.	PAGE NO.
Index of Singaporean Charts	-	3, 4
Index of Dual-Badged Charts	-	5 to 8
Index of Singapore Electronic Navigational Chart	-	9
Index of Malacca and Singapore Straits Electronic Navigational Chart	-	10
New Charts and Publications	-	11
Singapore Tide Tables 2017	-	12 to 14
Singaporean Chart GSP1/SP1	77	15
Singaporean Chart 501	77	15
Singaporean Chart 502	77, *78	15
Temporary and Preliminary Notices	*79P	16
Singapore Port Marine Notices/Circulars	*80	17
Amendments to Publications	*81	18, 19
Reprint of Radio Navigational Warnings	-	20
Extract of Admiralty Notices to Mariners for Dual-Badged Charts	-	21
Singapore Electronic Navigational Chart Distributors	-	22
Chart Distributors for the Maritime and Port Authority of Singaporean Charts and Publications	-	23

*Source: Maritime and Port Authority of Singapore

I
INDEX OF CHARTS AND PUBLICATIONS

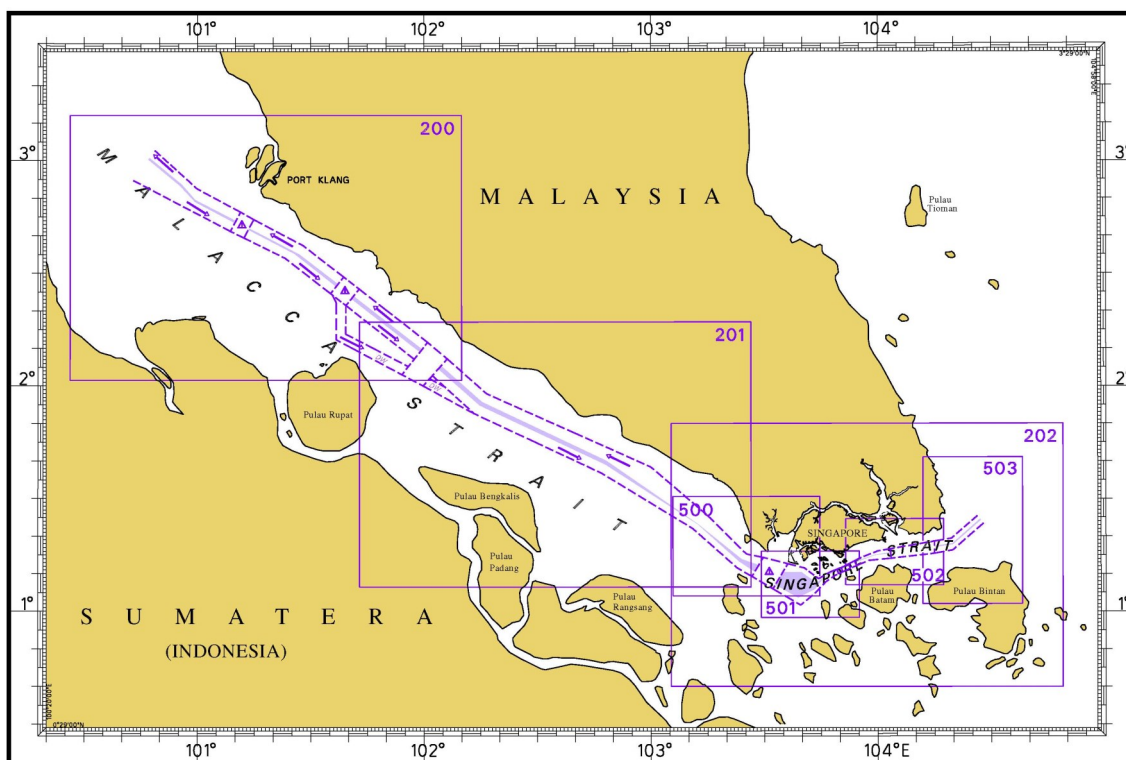
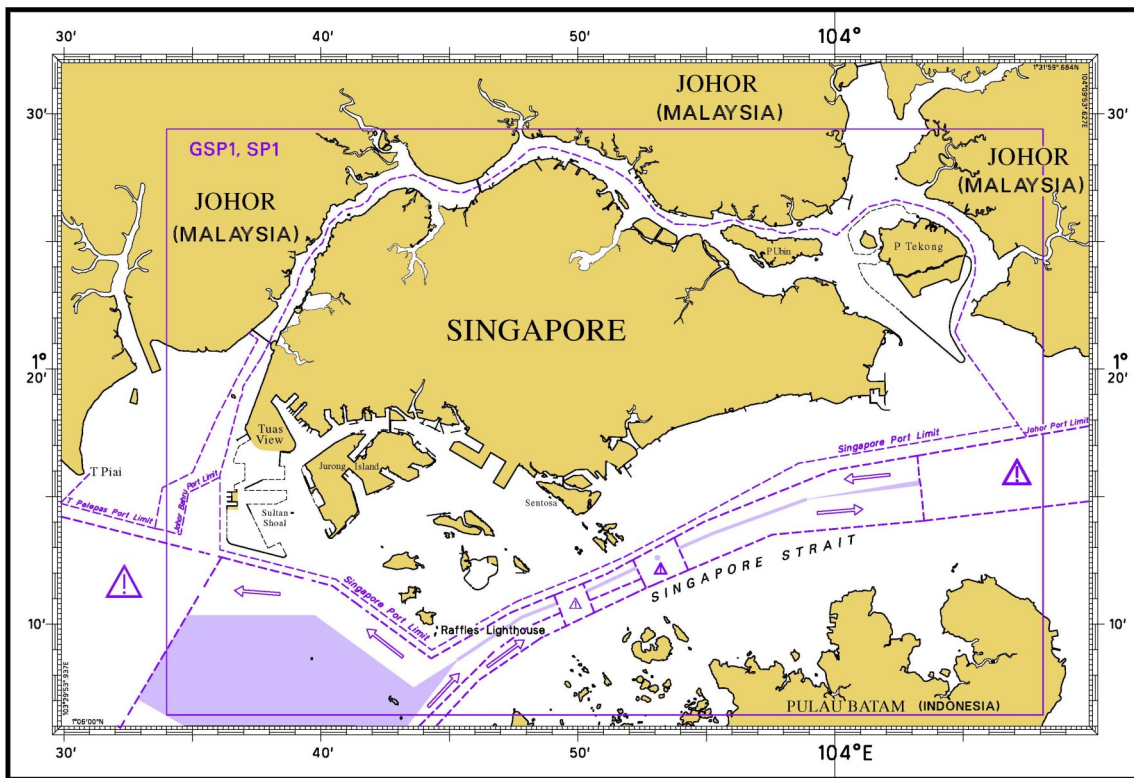
INDEX OF NOTICES

NOTICE NO.	DESCRIPTION	PAGE NO.
-	Index of Singaporean Charts	3, 4
-	Index of Dual-Badged Charts	5 to 8
-	Index of Singapore Electronic Navigational Chart	9
-	Index of Malacca and Singapore Straits Electronic Navigational Chart	10
-	New Charts and Publications	11
-	Singapore Tide Tables 2017	12 to 14
77	Singaporean Chart GSP1/SP1	15
77	Singaporean Chart 501	15
77, *78	Singaporean Chart 502	15
*79P	Temporary and Preliminary Notices	16
*80	Singaporean Port Marine Notices/Circulars	17
*81	Amendment to Publications	18, 19
-	Reprint of Radio Navigational Warnings	20
-	Extract of Admiralty Notices to Mariners for Dual-Badged Charts	21
-	Singapore Electronic Navigational Chart Distributors	22
-	Chart Distributors for the Maritime and Port Authority of Singaporean Charts and Publications	23

*Source: Maritime and Port Authority of Singapore

I INDEX OF CHARTS AND PUBLICATIONS

INDEX OF SINGAPOREAN CHARTS



Notes:

Singaporean Charts are available through our Print-On-Demand (POD) Chart Service. Print-On-Demand (POD) Charts are the most up-to-date paper nautical charts printed for navigational use. These nautical charts are produced in accordance with the International Hydrographic Organization (IHO) chart specifications. All Singaporean Charts are continually updated to the latest Notices to Mariners before they are printed and sold to users.

I

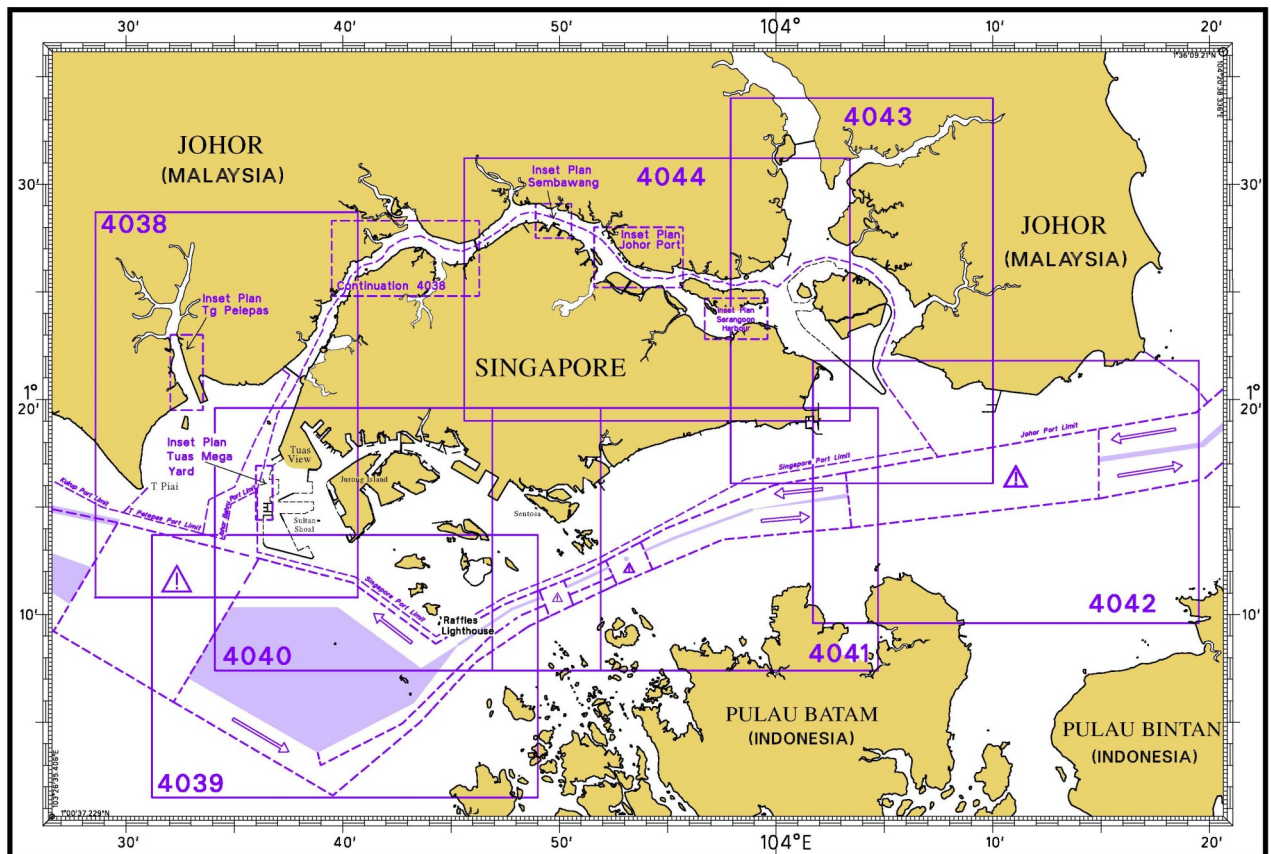
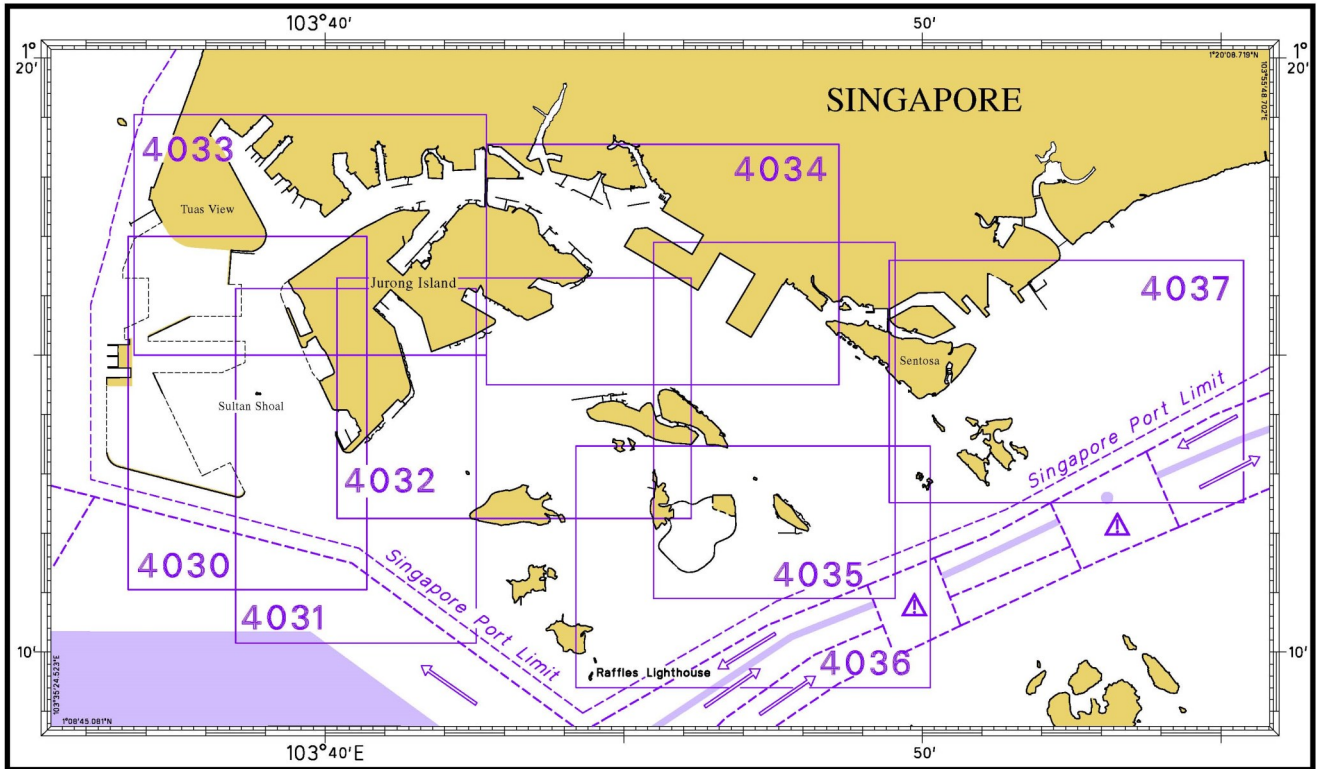
INDEX OF CHARTS AND PUBLICATIONS

SINGAPOREAN CHARTS

Chart No.	Chart Title	Scale 1:	Date Published of Latest Edition
GSP1	Anchorage and Aids to Navigation (with Area Reference)	65 000	15/02/2016
SP1	Anchorage and Aids to Navigation	65 000	15/02/2016
200	Malacca Strait - Port Klang to Tanjung Keling	200 000	01/09/2015
201	Malacca Strait - Tanjung Keling to Western Entrance of Singapore Strait	200 000	15/08/2014
202	Singapore Strait	200 000	15/09/2016
500	Malacca and Singapore Straits - Pulau Pisang to Raffles Lighthouse	75 000	26/09/2013
501	Singapore Strait - Western Part	50 000	01/09/2015
502	Singapore Strait - Eastern Part	50 000	01/09/2015
503	South China Sea - Eastern Approaches and Entrance to Singapore Strait	75 000	15/08/2014
-	Charts for Small Craft - Singapore Port Waters and Approaches	10 000 to 200 000	January 2016
1	Symbols Abbreviations Terms and S57 Objects used on Singapore Nautical and Electronic Navigational Charts Available for download at MPA website: http://www.mpa.gov.sg/web/portal/home/publications/charts-symbols-and-abbreviations	-	28/07/2011

I
INDEX OF CHARTS AND PUBLICATIONS

DUAL-BADGED CHARTS



I
INDEX OF CHARTS AND PUBLICATIONS

DUAL-BADGED CHARTS

Chart No.	Chart Title	Scale 1:	Date Published of Latest Edition
4030	Port of Singapore West Jurong Anchorages and Temasek Fairway	10 000	17/03/2016
4031	Port of Singapore Western Approaches to Jurong Island	10 000	17/03/2016
4032	Port of Singapore Sinki Fairway	10 000	04/08/2016
4033	Port of Singapore Tuas Bay, West Jurong Channel and Pesek Basin	10 000	17/03/2016
4034	Port of Singapore East Jurong Channel, Pasir Panjang Terminal and West Keppel Fairway	10 000	04/08/2016
4035	Port of Singapore Western Anchorages, Jong Fairway and Cruise Bay	10 000	28/05/2015
4036	Port of Singapore Raffles Lighthouse to The Sisters	10 000	28/05/2015
4037	Port of Singapore Keppel Harbour, Tanjong Pagar Terminal and Approaches	10 000	28/05/2015
4038	Malaysia and Singapore Johor Strait - Western Part	30 000	25/02/2016
4039	Indonesia, Singapore and Malaysia Western Approaches to Main Strait	30 000	24/04/2014
4040	Singapore, Indonesia and Malaysia Tuas View to Pulau Sakijang Bendera (St. John's Island)	30 000	27/08/2015
4041	Singapore and Indonesia Pulau Sebarok to Changi	30 000	27/08/2015

I
INDEX OF CHARTS AND PUBLICATIONS

DUAL-BADGED CHARTS

Chart No.	Chart Title	Scale 1:	Date Published of Latest Edition
4042	Indonesia, Malaysia and Singapore Changi to Pulau Mungging and Tanjung Buntan to Tanjung Tondang	30 000	24/04/2014
4043	Malaysia and Singapore Kuala Johor and Sungai Johor	30 000	16/06/2016
4044	Singapore and Malaysia Johor Strait - Eastern Part	30 000	16/06/2016

SINGAPOREAN PUBLICATIONS

Item	Title	Date Published of Latest Edition
1	Singapore Tide Tables Year 2016	09/09/2015
2	Singapore Tide Tables Year 2017	09/09/2016
3	Singapore Port Information 2016/2017	04/01/2016

I INDEX OF CHARTS AND PUBLICATIONS

DUAL-BADGED PORT APPROACH GUIDES

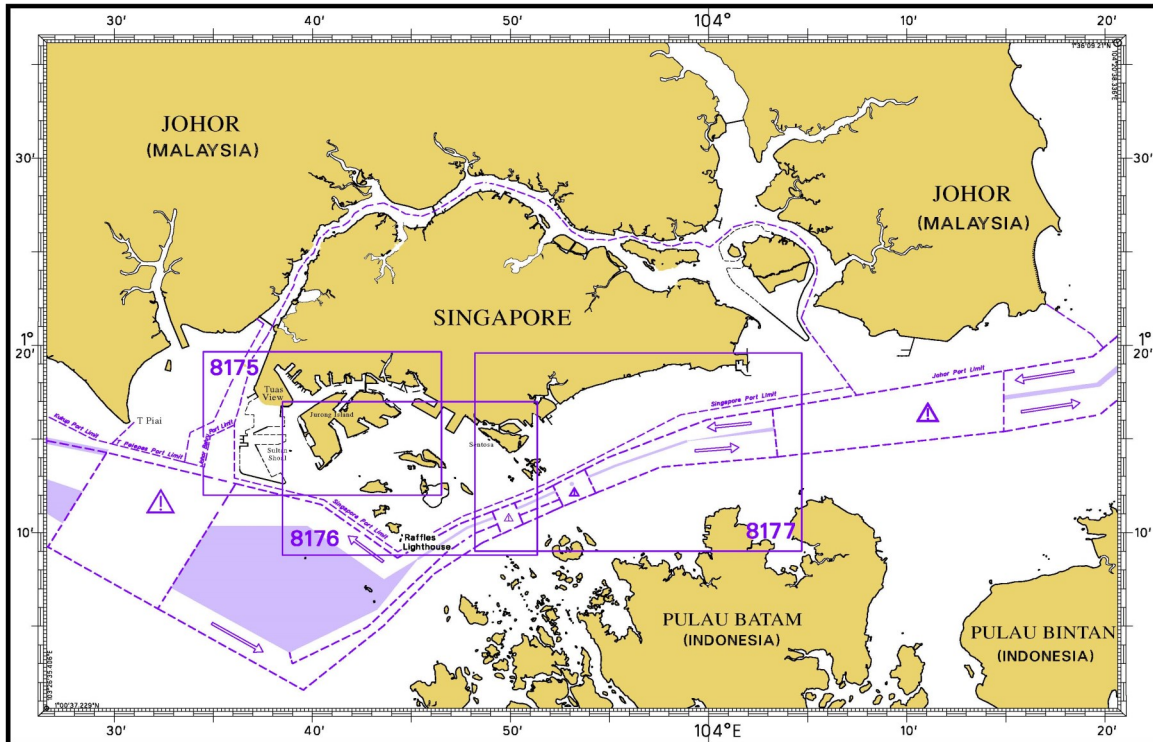


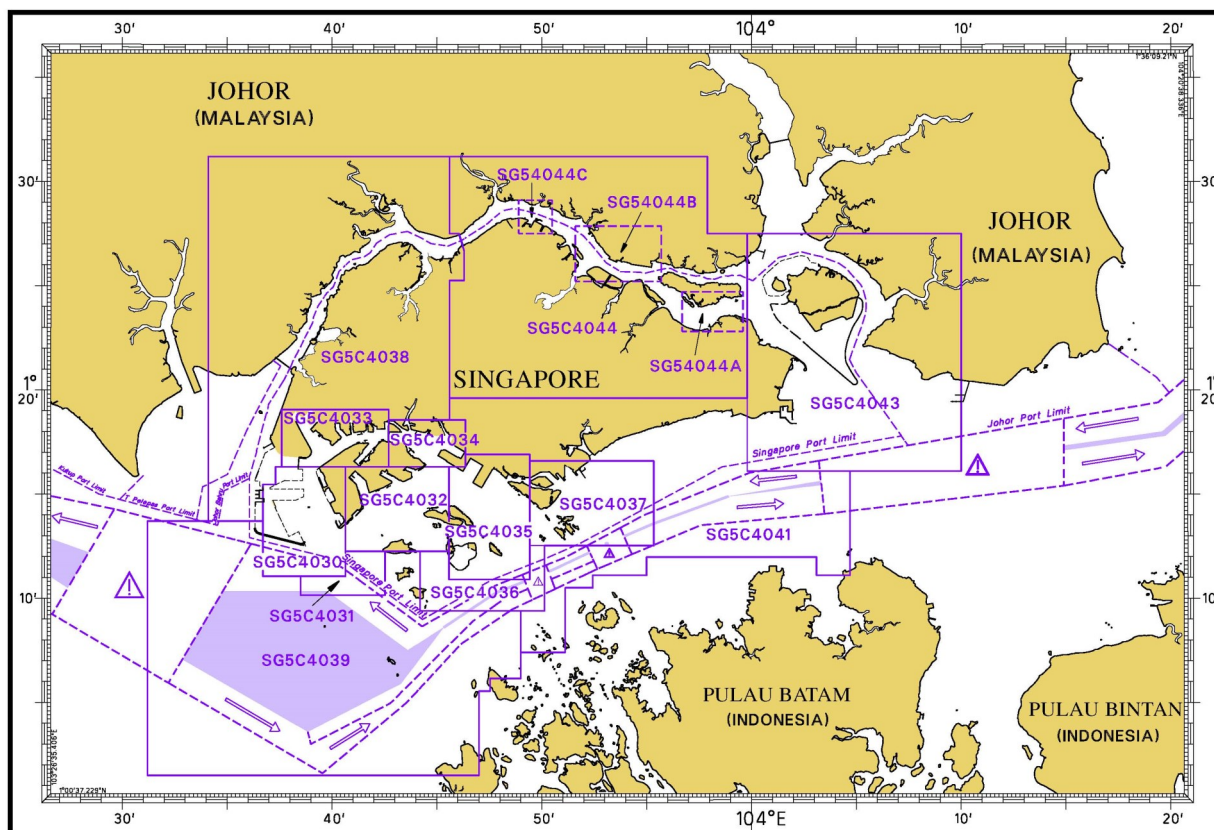
Chart No.	Chart Title	Scale 1:	Date Published of Latest Edition
8175	Port Approach Guide Singapore, Tuas View to Pasir Panjang Terminal including Jurong Channels	21 500	15/09/2016
8176	Port Approach Guide Singapore, Sinki Fairway to Southern Fairway	23 000	15/09/2016
8177	Port Approach Guide Singapore, Southern Fairway to Changi	30 000	15/09/2016

Note : The full range of Admiralty Port Approach guides is available from the Admiralty Chart Agents. To find an Admiralty Chart Agent, please visit :

<http://www.admiralty.co.uk/how-to-buy>

I

INDEX OF CHARTS AND PUBLICATIONS



SINGAPORE ELECTRONIC NAVIGATIONAL CHART (ENC)

ENC Name	ENC Coverage	ENC Edition
SG5C4030	West Jurong Anchorages and Temasek Fairway	9th Edition (17/03/2016)
SG5C4031	Western Approaches to Jurong Island	8th Edition (17/03/2016)
SG5C4032	Sinki Fairway	11th Edition (4/08/2016)
SG5C4033	Tuas Bay, West Jurong Channel and Pesek Basin	9th Edition (17/03/2016)
SG5C4034	East Jurong Channel, Pasir Panjang Terminal and West Keppel Fairway	14th Edition (4/08/2016)
SG5C4035	Western Anchorages, Jong Fairway and Cruise Bay	18th Edition (4/08/2016)
SG5C4036	Raffles Lighthouse to The Sisters	9th Edition (28/05/2015)
SG5C4037	Keppel Harbour, Tanjong Pagar Terminal and	9th Edition (28/05/2015)
SG5C4038	Johor Strait - Western Part	9th Edition (25/02/2016)
SG5C4039	Western Approaches to Main Strait	8th Edition (27/08/2015)
SG5C4041	Pulau Sebarok to Changi	9th Edition (27/08/2015)
SG5C4043	Kuala Johor	12th Edition (16/06/2016)
SG5C4044	Johor Strait - Eastern Part	12th Edition (16/06/2016)
SG54044A	Serangoon Harbour	3rd Edition (16/06/2016)
SG54044B	Pelabuhan Johor (Johor Port)	3rd Edition (16/06/2016)
SG54044C	Sembawang	3rd Edition (16/06/2016)

The latest edition of the Singapore ENC covering Singapore Waters and their approaches can be found in our monthly Singaporean Notices to Mariners at MPA website: <http://www.mpa.gov.sg/web/portal/home/port-of-singapore/port-operations/charts-tidal-information-aids-to-navigation-hydrography/nautical-charts/singapore-electronic-navigationalchart-enc>

II
NEW CHARTS AND PUBLICATIONS

NEW EDITION MALACCA & SINGAPORE STRAITS ENC RELEASED ON 15TH NOVEMBER 2016

ENC Name	Location	Coverage	Compilation Scale	Date Released
MS3OF2TT	One Fathom Bank to Tanjung Keling	Lat 02° 00·00' N 03° 12·00' N Long 100° 25·00' E 102° 10·00' E	1 : 180 000	15 th November 2016
MS3RS2FC	Raleigh Shoal to Fair Channel	Lat 01° 06·00' N 02° 18·00' N Long 101° 42·00' E 103° 27·00' E		
MS3IK2EB	Iyu Kechil to Eastern Bank	Lat 00° 40·00' N 01° 50·00' N Long 103° 05·00' E 104° 50·00' E		
MS4IK2RL	Iyu Kechil to Raffles Lighthouse	Lat 00° 57·80' N 01° 16·50' N Long 103° 21·00' E 103° 47·00' E	1 : 45 000	
MS4BR2JS	Buffalo Rock to Johor Shoal	Lat 01° 02·00' N 01° 20·00' N Long 103° 36·00' E 104° 03·00' E		
MS4NS2EB	Nongsa to Eastern Bank	Lat 01° 04·00' N 01° 32·00' N Long 103° 58·00' E 104° 37·00' E		

Description :

The Hydrographic Offices (HOs) of the three littoral States, namely Indonesia, Malaysia and Singapore, together with the Japan Hydrographic Association (JHA), jointly announces the commercial release of the 5th Edition Malacca and Singapore Straits Electronic Navigational Chart (MSS ENC) on 15th November 2016. The 5th Edition MSS ENC has superseded the 4th Edition issued on 1st July 2014.

The 5th Edition MSS ENC consists of six cells covering the Straits from One Fathom Bank, Malaysia, Riau waters of Indonesia to the eastern entrance of the Singapore Strait. It is an official ENC, meeting the International Hydrographic Organization specifications and standards. Used together with ECDIS, it meets SOLAS Convention chart carriage requirements.

The 5th Edition MSS ENC incorporates updates from the joint hydrographic survey carried out by the littoral States from October 2015 to March 2016 at five areas identified to be critical to navigation in the Straits. The survey has enabled the incorporation of one metre contour intervals at depths ranging from 10 to 30 metres into the 5th Edition MSS ENC. Sea trials of the 5th Edition MSS ENC have been conducted successfully by the littoral States to assess its performance on various ECDIS.

Given that the Straits are one of the world's busiest shipping routes, this additional information together with other updates enhances navigational safety and efficiency for vessels transiting the Straits.

For further information, please contact:
Japan Hydrographic Association (JHA)

Email: enc-support@jha.jp

Website: http://www.jha.or.jp/en/jha/purchase/distributors_world.html

II

NEW CHARTS AND PUBLICATIONS

SINGAPORE TIDE TABLES YEAR 2017 PUBLISHED ON 9TH SEPTEMBER 2016

Summary of Publication

This publication contains Tidal Height and Tidal Stream Predictions covering stations in Singapore Port Waters and along the Straits of Malacca and Singapore.

This publication consists of 5 segments.

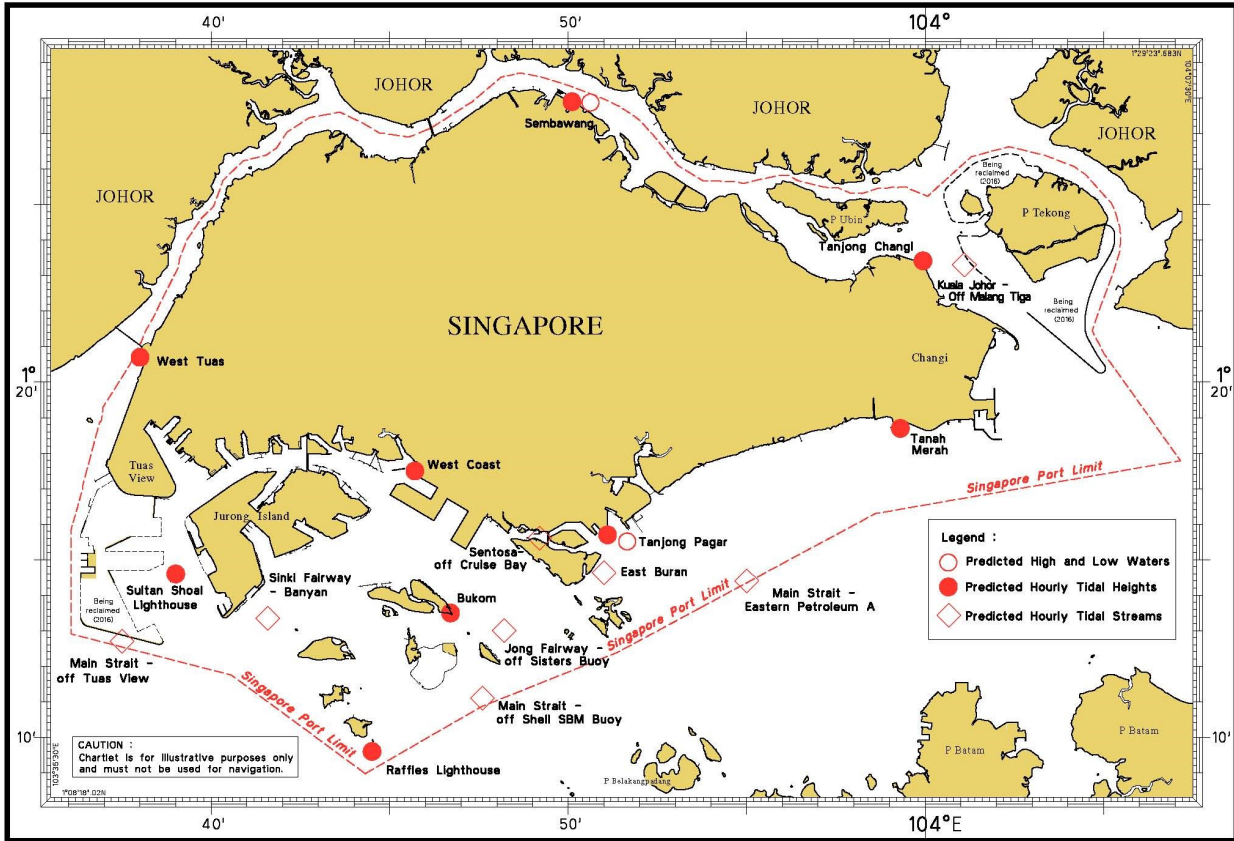


1. **High and Low Water Predictions** at the following stations:
 - a) Tanjong Pagar
 - b) Sembawang
2. **Hourly Tidal Height Predictions** at the following stations:
 - a) West Tuas
 - b) Sultan Shoal Lighthouse
 - c) Raffles Lighthouse
 - d) West Coast
 - e) Bukom
 - f) Tanjong Pagar
 - g) Tanah Merah
 - h) Tanjong Changi
 - i) Sembawang
 - j) Singapore Strait - Horsburgh Lighthouse
3. **Hourly Tidal Stream Predictions** at the following stations:
 - a) Main Strait - off Tuas View
 - b) Sinki Fairway - Banyan
 - c) Jong Fairway - off Sisters Buoy
 - d) Main Strait - off Shell SBM Buoy
 - e) Sentosa - off Cruise Bay
 - f) East Buran
 - g) Main Strait - Eastern Petroleum A
 - h) Kuala Johor - off Malang Tiga
4. **Maximum and Slack Tidal Stream Predictions** at the following stations
 - a) Malacca Strait - off Pulau Iyu Kecil Light
 - b) Singapore Strait - Selat Philip
 - c) Singapore Strait - Karang Banteng (Buffalo Rock)
 - d) Singapore Strait - Horsburgh Lighthouse
5. **Malacca Strait - High and Low Water Predictions** at the following stations:
 - a) Kedah Pier, Pulau Pinang
 - b) Port Dickson
 - c) Kuala Batu Pahat

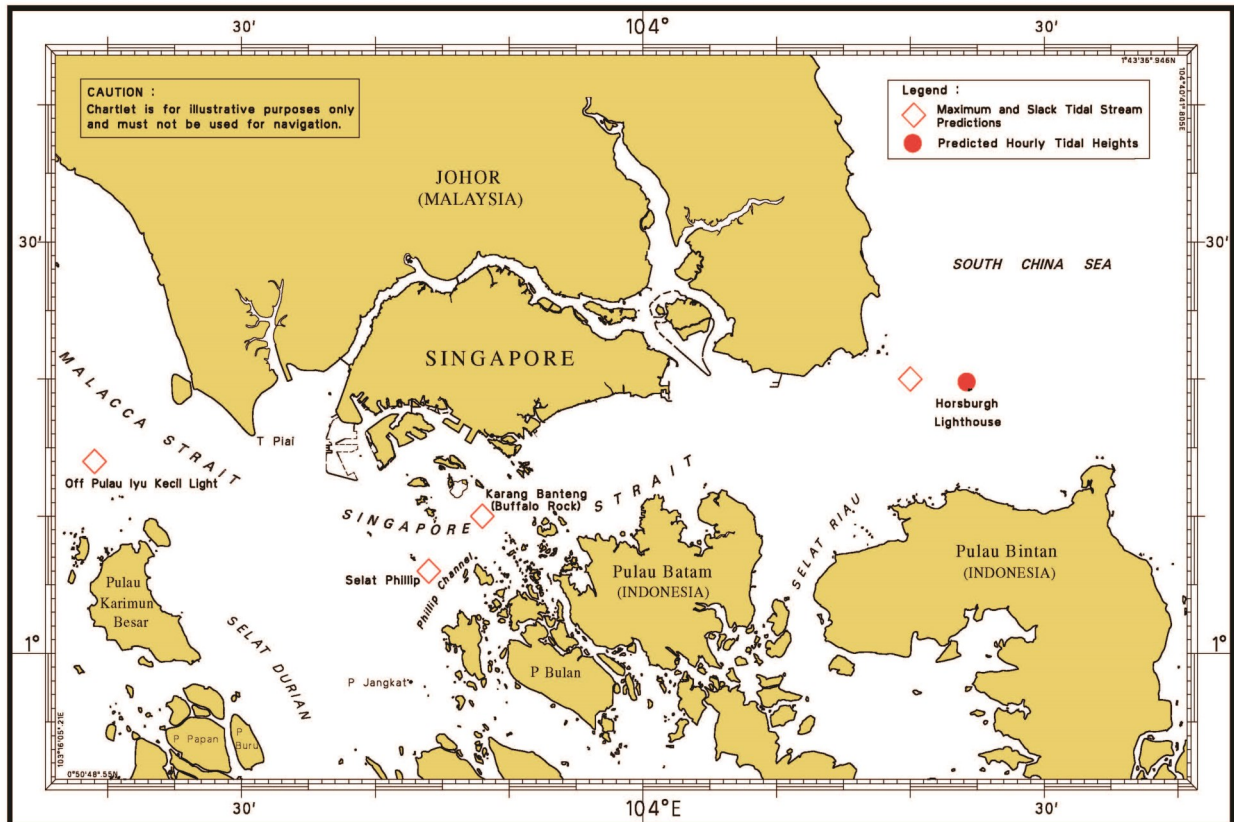
The locations of the above stations are shown in the chartlets below:

II
NEW CHARTS AND PUBLICATIONS

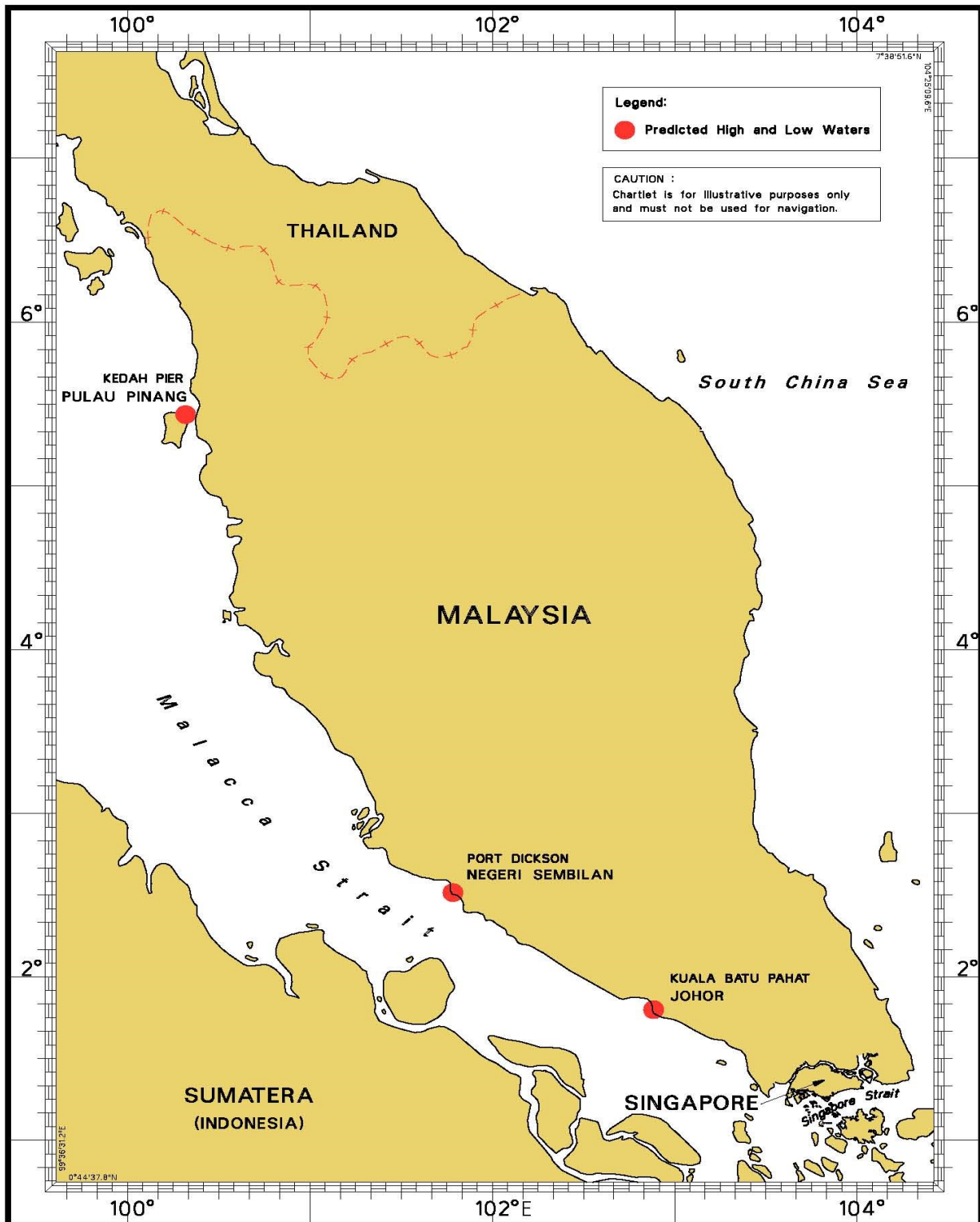
Tidal Prediction Stations within Singapore Port Waters



Tidal Prediction Stations in Straits of Malacca and Singapore



II
NEW CHARTS AND PUBLICATIONS
Tidal Prediction Stations in Malacca Strait







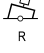


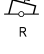

This publication is available from the following Chart Distributors:

1. Chartco (Singapore) Pte Ltd
2. Cornes (Singapore) Pte Ltd
3. E.W. Limer Charts & Publications Pte Ltd
4. Global Navigation Solutions Pte Ltd
5. Motion Smith

(Please refer Page 23 for details)

II

NOTICES TO MARINERS AND CHART CORRECTIONS

GSP1/SP1	1 Ed 15/02/16 Last NM 72/2016	(Indonesian Notice No. 39/484-486/16)		NM 77/2016
Insert	 Fl.Y.4s4M		1°09-88'N	103°53-67'E
	 Fl.R.6s No 2		1°10-26'N	103°53-19'E
	 Fl.G.5s No 1		1°10-27'N	103°52-80'E
<hr/>				
501	7 Ed 01/09/15 Last NM 62/2016	(Indonesian Notice No. 39/484-486/16)		NM 77/2016
Insert	 Fl.Y.4s4M		1°09-88'N	103°53-67'E
	 Fl.R.6s No 2		1°10-26'N	103°53-19'E
	 Fl.G.5s No 1		1°10-27'N	103°52-80'E
<hr/>				
502	7 Ed 01/09/15 Last NM 74/2016	(Indonesian Notice No. 39/484-486/16)		NM 77/2016
Insert	 Fl.Y.4s4M		1°09-88'N	103°53-67'E
	 Fl.R.6s No 2		1°10-26'N	103°53-19'E
	 Fl.G.5s No 1		1°10-27'N	103°52-80'E
		(Maritime and Port Authority of Singapore)		NM 78/2016
Insert	depth, 5 enclosed by a 5m contour		1°20-67'N	104°02-99'E
Delete	depth, 5 ₀		1°20-63'N	104°03-00'E

II

TEMPORARY AND PRELIMINARY NOTICES

*(NM 79P/2016) SINGAPORE - Installation of SEA-ME-WE 5 Submarine Cable System (SMW 5) established from Tuas, Singapore

1. The cables are laid joining the following coordinates:

Position	(Co-ordinates: WGS84)		Remarks
	Latitude (N)	Longitude (E)	
1	1°17·43'N	103°37·18'N	Tuas, Singapore
2	1°16·62'N	103°36·38'N	joining to
3	1°15·78'N	103°36·14'N	joining to
4	1°10·83'N	103°35·59'N	joining to
5	1°14·12'N	103°20·84'N	joining to
6	1°18·13'N	103°04·33'N	joining to
7	1°17·73'N	103°03·83'N	joining to
8	1°33·52'N	102°42·10'N	joining to
9	1°46·61'N	102°23·66'N	joining to
10	2°00·62'N	101°56·76'N	joining to
11	2°11·78'N	101°33·64'N	joining to
12	2°38·97'N	101°03·70'N	joining to
13	2°39·55'N	100°57·89'N	joining to
14	3°06·70'N	100°31·73'N	joining to
15	3°11·99'N	100°26·44'N	Chart 200 border

2. Charts affected : Singaporean charts 200, 201, 202, 500
Dual Badged Charts 4038, 4039 and 4040

Source: Singtel (MPA/DB67/2/2016)

III NAVIGATIONAL INFORMATION

***(NM 80/2016) SINGAPORE PORT MARINE NOTICES/CIRCULARS**

The Port Marine Notices/Circulars shortlisted below would be of particular interest to Mariners. Details and complete list of Port Marine Notices/Circulars are available at this link:

<http://www.mpa.gov.sg/web/portal/home/port-of-singapore/circulars-and-notices>

PMN No.	Subject
117/2016	Seawall opening and submarine cable diversion works off Ayer Merbau Basin and Selat Pandan
119/2016	Dangers of directing laser lights at aircraft
123/2016	Mooring and unmooring of vessels off eastern part of Tuas View Extension
125/2016	Reclamation work at Tuas View off Temasek Fairway
126/2016	Mooring and unmooring of vessels at Tuas Finger One project area
128/2016	Soil investigation works off Woodlands Oil Pier (Shell)
129/2016	Annual Marine Services Survey (2016) of Shipmasters
130/2016	Annual Marine Services Survey (2016) of shore-based operators (Shipping agents and Marine terminal /Operation Managers)
132/2016	Dredging works at Temasek Fairway
133/2016	Transport of sand material to stockpile area at Tuas View Extension

PMC No.	Subject
15/2016	Extension of port dues concession for container vessels, bulk carriers and offshore support vessels
16/2016	Advisory to owners, agents and masters of pleasure craft, recreational fishing vessels and yachts departing Singapore

*Source: Maritime and Port Authority of Singapore

III AMENDMENTS TO PUBLICATIONS

*(NM 81/2016) UPDATING OF PUBLICATION "SINGAPORE PORT INFORMATION 2016/2017"

CONTROLLING DEPTHS OF NAVIGATIONAL CHANNELS AND FAIRWAYS

1. Page 109

Delete the following:

LOCATIONS	DEPTHS (m)	REMARKS
Pesek Basin	10.1 12.1	

2. Page 111

Insert the following:

LOCATIONS	DEPTHS (m)	REMARKS
Pesek Basin	10.1 12.1	

CHARACTERISTICS OF AIDS TO NAVIGATION

3. Page 133

Tuas View Extension

Amend the following:

Name of Beacon/Buoy	Position Lat.N Long.E Deg Min	Structure, Colour & Shape	Light Characteristic	Owner
Lube Park Front Beacon Lts in line 200.7°	01°16-506' 103°36-592'	Red triangle daymark point upward on white steel pole	QR.11m	Singapore Lube Park Pte Ltd
Lube Park Rear Beacon Lts in line 200.7°	01°16-494' 103°36-587'	Red triangle daymark point downward on white steel pole	Iso.R.4s15m	Singapore Lube Park Pte Ltd

4. Page 158

Pulau Tekong

Amend the following:

Name of Beacon/Buoy	Position Lat.N Long.E Deg Min	Structure, Colour & Shape	Light Characteristic	Owner
Tekong 19	01°26-544' 104°02-353'	Double black cones topmark point upward on black yellow pillar	QW	HDEC

III
AMENDMENTS TO PUBLICATIONS

DOCKS AND REPAIR BERTHS

5. Page 187

7 TANJONG GUL (KEPPEL SHIPYARD LTD)(1°18·0'N, 103°40·6'E)**Amend** the following:

Berth	Length of Berth Box	Depth Alongside (Year Surveyed)	Controlling Depth In Approaches
Quay1(YHQ1)	217m	6.2m (2014)	6.8m

*Source: Maritime and Port Authority of Singapore

IV REPRINT OF RADIO NAVIGATIONAL WARNINGS

The following Radio Navigational Warnings have been shortlisted, as they would be of particular interest to mariners.

TT175

VESSELS IN EAST JOHOR STRAIT ARE ADVISED TO NAVIGATE WITH PARTICULAR ALERTNESS AND CAUTION WHEN NEAR PROJECT AREAS OFF PULAU TEKONG, CHANGI AND MALANG PAPAN AS SHALLOW WATER AREA EXIST. VESSELS ARE REMINDED TO PROCEED AT SAFE SPEED AND MAINTAIN A PROPER LOOKOUT, PARTICULARLY FOR TUGS AND BARGES NAVIGATING NEAR THE PROJECT AREAS AND PASSENGER FERRIES CROSSING BETWEEN CHANGI AND PULAU TEKONG AND VICINITY OF PASIR GUDANG.

TT273

ALL VESSELS ARE ADVISED TO NAVIGATE WITH CAUTION, COMPLY WITH THE INTERNATIONAL COLLISION REGULATIONS, MAINTAIN VHF RADIO WATCH AND LISTEN TO TRAFFIC INFORMATION WHEN NAVIGATING IN THE SINGAPORE STRAIT AND PORT WATERS. MARINERS ARE ALSO ADVISED TO KEEP A GOOD LOOKOUT OF FREQUENT FERRIES CROSSING THE SINGAPORE STRAIT.

TT356

TAKONG BEACON Q(6)+LFL.15S IN POSITION LAT 01°05.891'N LONG 103°43.167'E IS REPORTED DIMLY LIT. ALL VESSELS PASSING THE VICINITY ARE ADVISED TO NAVIGATE WITH EXTRA CAUTION.

TT363

MARINERS ARE REMINDED NOT TO ANCHOR IN ALL AREAS IN THE TSS OF THE STRAITS OF MALACCA AND SINGAPORE AS WELL AS BETWEEN THE LANDWARD LIMITS OF THE TSS AND APPROACHES TO THE PORTS. VESSELS ENTERING ANY PORT IN ANY LITTORAL STATES ARE TO ANCHOR IN THE ANCHORAGES DESIGNATED BY THE RESPECTIVE LITTORAL STATES ONLY.

TT369

AN EMERGENCY WRECK MARKER BUOY IS DAMAGED IN POSN LAT 01°12.767'N LONG 103°54.750'E. ALL VESSELS ARE ADVISED TO NAVIGATE WITH CAUTION.

TT374

PETTY THEF REPORTED ONBOARD VESSEL ANCHORED IN POSITION 01°26.62'N 104°41.05'E ON 15 NOV 2016 AT 0100HRS. ALL VESSELS ARE REMINDED TO MAINTAIN ANTI PIRACY WATCH, LOOKOUT FOR ANY SUSPICIOUS CRAFT APPROACHING THE VICINITY.

TT375

A FISHING TRAWLER IS REPORTED SUNK IN POSITION 01°09.78'N 103°47.26'E. VESSELS PASSING THE VICINITY ARE TO NAVIGATE WITH CAUTION AND REPORT ANY SIGHTING OF PERSON IN WATER TO VTIS CENTRAL ON CHANNEL 14.

TT376 (AMENDED 27/1800Z)

26 NOV 16 AT 0900UTC BATU BERHANTI ISOLATED DANGER BUOY ADRIFT IN POSITION LAT 01°10.17'N LONG 103°49.95'E. ALL VESSELS ARE ADVISED TO NAVIGATE WITH CAUTION.

TT961

VESSELS INTENDING TO CROSS THE TRAFFIC SEPERATION SCHEME (TSS) OR PRECAUTIONARY AREAS IN THE SINGAPORE STRAIT DURING HOURS OF DARKNESS ARE RECOMMENDED TO DISPLAY THE NIGHT SIGNALS CONSISTING OF 3 ALL ROUND GREEN LIGHTS IN A VERTICAL LINE AS DETAILED IN MARITIME AND PORT AUTHORITY OF SINGAPORE'S PORT MARINE CIRCULAR, 02 OF 2011 DATED 30 MAY 2011.

SR123

SEA ROBBERIES ARE REPORTED IN THE SINGAPORE STRAIT. ALL VESSELS ARE REMINDED TO MAINTAIN A PROPER LOOK-OUT AND REPORT ANY SUSPICIOUS CRAFT TO VTIS SINGAPORE.

ISSUED BY SINGAPORE PORT OPERATIONS CONTROL CENTRE (as at 27th Nov 2016)

V
EXTRACT OF ADMIRALTY NOTICES TO MARINERS
FOR DUAL-BADGED CHARTS

These notices can also be accessed directly from UKHO Website:

<http://www.admiralty.co.uk/maritime-safety-information/admiralty-notices-to-mariners>

5964 **INDONESIA - Sumatera - Pulau Sambu NW - Light-beacon. Buoyage.**

Source: Indonesian Notices 39/484-486/16

Chart 4041 [previous update 3315/16] WGS84 DATUM

Insert	 Fl.Y.4s4M	1°09·88'N	103°53·67'E
	 Fl.R.6s No 2	1°10·26'N	103°53·19'E
	 Fl.G.5s No 1	1°10·27'N	103°52·80'E

Updated to Admiralty Notices to Mariners No. 47 of 2016 dated 24th Nov 2016

SINGAPORE ENC DISTRIBUTORS

ENC DISTRBUTOR	ADDRESS	TEL/FAX/EMAIL/WEBSITE
C-MAP Norway AS	Hovlandsveien 52, 4374, Egersund Norway	Tel: +47 51 46 4700 Fax: +47 51 46 4701 Email: enc@c-map.com Website: http://www.c-map.com
Chartworld GmbH	Atlantic Haus, Zirkusweg 1 D-20359 Hamburg, Germany	Tel: +49 40 853 58 6942 Fax: +49 40 853 58 6949 Email: sales@chartworld.com
Chartworld Asia Pacific Pte Ltd	Frontech Centre 07-01 15 Jalan Kilang Barat Singapore 159357	Tel: +65 6513 3500 Website: http://www.chartworld.com http://www.ecdis-as-a-service.com
Global Navigation Solutions Pte Ltd	2 Boon Leat Terrace #05-02/03/04, Harbourside Building 2 Singapore 119844	Tel: +65 62704060 Fax: +65 62763858 Email: sg.info@gnsworldwide.com Website: www.gnsworldwide.com
Japan Hydrographic Association (Electronic Charts Division)	Daiichi Sogo Bldg, 6F 1-6-6, Hanedakuko, Ota-ku Tokyo 144-0041 Japan	Tel: +81 3 5708 7093 Fax: +81 3 5708 7094 Email: shimizu-6kj@jha.jp Website: http://www.jha.or.jp/en/jha/
Maritime Information Systems (MARIS)	52, Telok Blangah Road #01-06 Telok Blangah House Singapore 058809	Tel: +65 6276 1472 Fax: +65 6276 1473 Email: support@maris.sg Website: http://www.maris.no
Maritime Information System AS (MARIS)	Danholmen 25, 3128 Notteroy Norway	Tel: +47 33 30 42 50 Fax: +47 33 30 42 51 Email: sales@maris.no Website: http://www.maris.no
Motion Smith	15 Jalan Kilang Barat #08-01/05 Frontech Centre Singapore 159357	Tel: +65 6220 5098 Fax: +65 6225 4902 Email: sales@motsmith.com Website: http://www.motsmith.com
PRIMAR STAVANGER	Lervigsveien 36, P.O Box 60 N-4001 Stavanger, Norway	Tel: +47 51 93 9500 Fax: +47 51 93 9501 Email: sales@ecc.no Website: http://www.primar.no
Transas Marine Pacific Pte Ltd	Cyber Centre 16/18 Jalan Kilang Barat Off Jalan Bukit Merah Singapore 159358	Tel: +65 6271 0200 Fax: +65 62717300 Email: navigation.asia@transas.com Website: http://www.transas.com
The United Kingdom Hydrographic Office	Admiralty Way, Taunton Somerset, TA1 2DN United Kingdom	Tel: +44 1823 33 7900 Fax: +44 1823 28 4077 Email: ENCS.SalesReports@ukho.gov.uk Website: http://www.ukho.gov.uk

**Chart Distributors for the Maritime and Port Authority of Singaporean
Charts and Publications**

Please approach any of the Chart Distributors to purchase the Singaporean Charts and Publications

CHART	ADDRESS	TEL/FAX/EMAIL/WEBSITE
Chartco (Singapore) Pte Ltd	896 Dunearn Road #03-05 Sime Darby Centre Singapore 589472	Tel: +65 6545 9880 Ext 65285 Fax: +65 6545 8892 Email: leslie.khoo@chartco.com Website: http://www.chartco.com
Cornes (Singapore) Pte Ltd	10 Anson Road #23-06/6A International Plaza Singapore 079903	Tel: +65 6223 8320 Fax: +65 6223 8321 Email: sales9850@cspl.sg Website: http://www.cornes-charts.com
E.W. Liner Charts & Publications Pte Ltd	100, Pasir Panjang Road #05-10 Singapore 118518	Tel: +65 6323 0773 Fax: +65 6323 0775 Email: sales@ewliner.com Website: http://www.ewliner.com
Global Navigation Solutions Pte Ltd	2 Boon Leat Terrace #05-02/03/04, Harbourside Building 2 Singapore 119844	Tel: +65 6270 4060 (After office hours: +65 9632 5268) Fax: +65 6276 3858 Email: sg.info@gnsworldwide.com Website: http://www.gnsworldwide.com
Motion Smith	15 Jalan Kilang Barat #08-01/05 Frontech Centre Singapore 159357	Tel: +65 6220 5098 (After office hours: +65 8163 9993) Fax: +65 225 4902 Email: sales@motsmith.com Website: http://www.motsmith.com

HYDROGRAPHIC NOTE - Instructions

1. Mariners are requested to notify the Chief Hydrographer, Maritime and Port Authority of Singapore, when new or suspected dangers to navigation are discovered, changes are observed in aids to navigation or where corrections to nautical publications may be necessary. Reports, which cannot be confirmed or are lacking in certain details should not be withheld.
2. Any ambiguities of time, positioning and depth should be stressed and any firm expectation of being able to check the information provided on a following voyage should be mentioned.
3. Mariners using satellite position fixing systems, eg. GPS, should provide details of equipment and datum used (where applicable). Where bearings (true or magnetic) are taken visually or by radar to fix a position, it should include more than two objects in order to provide a check on its accuracy. A position may also be defined by bearing and distance from a conspicuous object eg. beacon, lighthouse etc.
4. The note should include a tracing or a digital image of the chart used and the details should be clearly marked.
5. Echo sounders frequently register greater depths than the advertised maximum depth for the equipment, eg. a trace appearing at 50 metres may be in fact be 550 metres or even 1050 metres for equipment whose maximum depth is 500 metres. Erroneous depths caused by 2nd transmission error can usually be recognised by the following:
 - (a) the tracing being weaker than normal for the depth registered,
 - (b) the trace appearing to pass through the transmission line,
 - (c) the feathery nature of the trace.
6. Upon receipt of a hydrographic note, a Notice to Mariners may be issued. The sender's vessel or name is quoted as the source unless the same information is also received in foreign Notices to Mariners.
7. Reports of shoals, uncharted dangers and defects in aids to navigation may also be made to the appropriate Singapore Port Operations Control Centre on VHF Channels 10, 12, 14, 68 or 73.

HYDROGRAPHIC NOTE

To:

Chief Hydrographer
Maritime and Port Authority of Singapore
7B Keppel Road #20-00 Tanjong Pagar Complex
Singapore 089055

Tel : (65) 6325 2027
Fax : (65) 6226 1076
Email : hydrographic@mpa.gov.sg

Sender's Contact Details :

Date :
Name of Vessel :
Address of Sender :
Tel : Fax :
Email :

Nature of Observation :

General Location :
Subject :
Position : Lat. Long.
Charts Used :
Date & Time of Observation :
Details :
Attachment :

Equipment Used :

Type of Position Fixing : GPS / DGPS Others :
Type of Echo Sounder :
Name and Signature :

Ship's/Company's Stamp :