



## SINGAPOREAN NOTICES TO MARINERS

SECTION	CONTENT	Page
I	Affected Charts & Publications	1
II	New Charts & Publications	3
	Notices to Mariners and Chart Corrections	12
	Temporary and Preliminary Notices	15
III	Navigational Information	18
	Amendments to Publications	21
IV	Reprint of Maritime Safety Information	23
V	Extract of Admiralty Notices to Mariners for Dual-Badged Charts	25

The monthly Notices to Mariners contain information required to keep charts and publications published by the Hydrographic Department, Maritime and Port Authority of Singapore up-to-date.

Mariners are requested to notify the Chief Hydrographer, Maritime and Port Authority of Singapore, immediately of the discovery of new or suspected dangers to navigation, observed changes to aids to navigation and ways Singaporean Charts and Publications can be improved. The Hydrographic Note on the back page should be used for this purpose.

Detailed information of charts and publications (coverage of charts, latest editions and distributors) are available on the Maritime and Port Authority Website: [www.mpa.gov.sg](http://www.mpa.gov.sg)

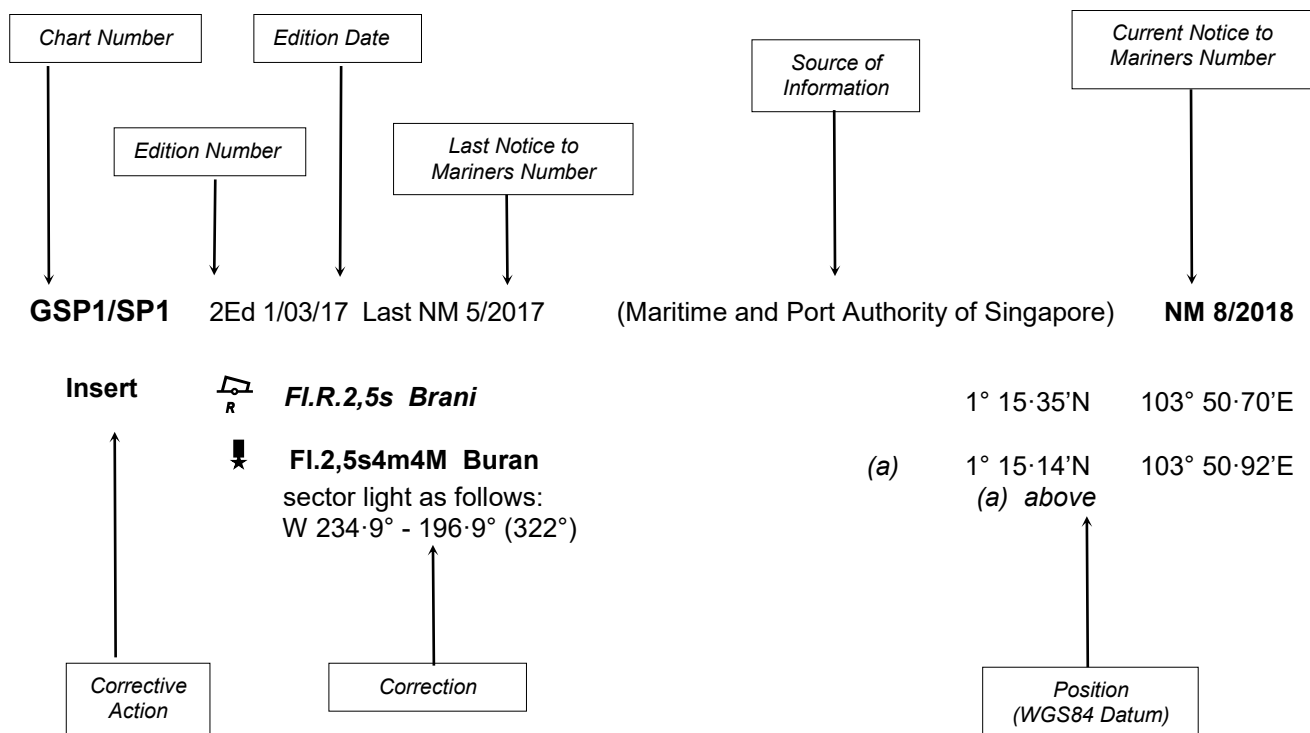
- [Singaporean Notice to Mariners](#)
- [Singaporean Charts](#)
- [Dual-Badged Charts](#)
- [Singapore ENC](#)
- [Malacca and Singapore Straits ENC](#)
- [Singapore Port Information](#)
- [Singapore Tide Tables](#)

### Contact information:

Hydrographic Department  
Maritime and Port Authority of Singapore  
7B Keppel Road  
#20-00 Tanjong Pagar Complex  
Singapore 089055  
Tel : (65) 6325 2027  
Fax : (65) 6226 1076  
Email : [hydrographic@mpa.gov.sg](mailto:hydrographic@mpa.gov.sg)

## EXPLANATION OF FORMAT

The elements of a typical chart correction are explained below.



### Notes:

- Notice to Mariners number followed by:  
**T** indicates a Temporary Notice (eg. **NM 9T/2018**).  
**P** indicates a Preliminary Notice (eg. **NM 10P/2018**).
- Bearings are true reckoned clockwise from 000° to 359°; those relating to lights are from seaward.
- Heights and elevations are above Mean High Water Springs.

I  
**AFFECTED CHARTS AND PUBLICATIONS**

**INDEX OF AFFECTED CHARTS**

<b>DESCRIPTION</b>	<b>NOTICE NO.</b>	<b>PAGE NO.</b>
New Charts and Publications	-	3 to 11
Singaporean Chart GSP1/SP1	*92, *93, *94 , *95, 96	12
Singaporean Chart 200	97	13
Singaporean Chart 202	96, 98	13
Singaporean Chart 500	*93, 94	13, 14
Singaporean Chart 501	*93, *94, *95 , 96	14
Singaporean Chart 502	*92	14
Temporary and Preliminary Notices	*99	15 - 17
Singapore Port Marine Notices/Circulars	*100	18 - 20
Amendments to Publications	*101	21, 22
Reprint of Maritime Safety Information	-	23, 24
Extract of Admiralty Notices to Mariners for Dual-Badged Charts	-	25, 26

\*Source: Maritime and Port Authority of Singapore

I  
**AFFECTED CHARTS AND PUBLICATIONS**

**INDEX OF NOTICES**

<b>NOTICE NO.</b>	<b>DESCRIPTION</b>	<b>PAGE NO.</b>
-	New Charts and Publications	3 to 11
*92, *93, *94 , *95, 96	Singaporean Chart GSP1/SP1	12
97	Singaporean Chart 200	13
96, 98	Singaporean Chart 202	13
*93, 94	Singaporean Chart 500	13, 14
*93, *94, *95 , 96	Singaporean Chart 501	14
*92	Singaporean Chart 502	14
*99	Temporary and Preliminary Notices	15 - 17
*100	Singapore Port Marine Notices/Circulars	18 - 20
*101	Amendments to Publications	21, 22
-	Reprint of Maritime Safety Information	23, 24
-	Extract of Admiralty Notices to Mariners for Dual-Badged Charts	25, 26

\*Source: Maritime and Port Authority of Singapore

## II NEW CHARTS AND PUBLICATIONS

### NEW EDITION DUAL BADGED CHARTS TO BE PUBLISHED ON 27<sup>TH</sup> DECEMBER 2018

<b>Chart Number</b>	:	4038
<b>Title</b>	:	Malaysia and Singapore Johor Strait - Western Part
<b>Coverage</b>	:	Lat 01° 10-80' N      01° 28-70' N Long 103° 28-60' E      103° 40-70' E
<b>Scale</b>	:	1 : 30 000
<b>Date Published</b>	:	27 <sup>th</sup> December 2018
<b>Size of Chart</b>	:	750.6 x 1100.2 mm
<b>Description</b>	:	This new edition includes updated bathymetry and topography details covering western part of Johor Strait.  The existing chart of the same number published on 25 <sup>th</sup> February 2016 will be superseded.

---

<b>Chart Number</b>	:	4040
<b>Title</b>	:	Singapore, Indonesia and Malaysia Tuas View to Pulau Sakijang Bendera (S. John's Island)
<b>Coverage</b>	:	Lat 01° 07-40' N      01° 19-60' N Long 103° 34-10' E      103° 51-90' E
<b>Scale</b>	:	1 : 30 000
<b>Date Published</b>	:	27 <sup>th</sup> December 2018
<b>Size of Chart</b>	:	1100.6 x 749.5 mm
<b>Description</b>	:	This new edition includes updated bathymetry and topography details covering Tuas View to Pulau Sakijang Bendera (S. John's Island)  The existing chart of the same number published on 4 <sup>th</sup> May 2017 will be superseded.

---

## II NEW CHARTS AND PUBLICATIONS

### NEW EDITION DUAL BADGED CHARTS TO BE PUBLISHED ON 27<sup>TH</sup> DECEMBER 2018

<b>Chart Number</b>	:	4041
<b>Title</b>	:	Singapore and Indonesia Pulau Sebarok to Changi
<b>Coverage</b>	:	Lat 01° 07·40' N      01° 19·60' N Long 103° 46·90' E      104° 04·70' E
<b>Scale</b>	:	1 : 30 000
<b>Date Published</b>	:	27 <sup>th</sup> December 2018
<b>Size of Chart</b>	:	1100.6 x 749.6 mm
<b>Description</b>	:	This new edition includes updated submarine cables, bathymetry and topography details covering Pulau Sebarok to Changi.
		The existing chart of the same number published on 4 <sup>th</sup> May 2017 will be superseded.

---

<b>Chart Number</b>	:	4043
<b>Title</b>	:	Malaysia and Singapore Kuala Johor and Sungai Johor
<b>Coverage</b>	:	Lat 01° 16·10' N      01° 34·00' N Long 103° 57·90' E      104° 10·00' E
<b>Scale</b>	:	1 : 30 000
<b>Date Published</b>	:	27 <sup>th</sup> December 2018
<b>Size of Chart</b>	:	748.1 x 1099.6 mm
<b>Description</b>	:	This new edition includes updated submarine cables and bathymetry details covering Kuala Johor and Sungai Johor.
		The existing chart of the same number published on 15 <sup>th</sup> June 2017 will be superseded.

---

## II NEW CHARTS AND PUBLICATIONS

### NEW EDITION DUAL BADGED CHARTS TO BE PUBLISHED ON 27<sup>TH</sup> DECEMBER 2018

<b>Chart Number</b>	:	4044
<b>Title</b>	:	Singapore and Malaysia Johor Strait - Eastern Part
<b>Coverage</b>	:	Lat 01° 19·00' N      01° 31·20' N Long 103° 45·60' E      104° 03·40' E
<b>Scale</b>	:	1 : 30 000
<b>Date Published</b>	:	27 <sup>th</sup> December 2018
<b>Size of Chart</b>	:	1100.5 x 749.5 mm
<b>Description</b>	:	This new edition includes updated bathymetry and topography details covering Eastern Part of Johor Strait.  The existing chart of the same number published on 15 <sup>th</sup> June 2017 will be superseded.

---

## II NEW CHARTS AND PUBLICATIONS

### NEW EDITION SINGAPORE ENC TO BE RELEASED ON 27<sup>TH</sup> DECEMBER 2018

<b>ENC Name</b>	:	SG5C4038
<b>Location</b>	:	Johor Strait - Western Part
<b>Coverage</b>	:	Lat 01° 13·70' N      01° 31·20' N Long 103° 34·10' E      103° 46·34' E
<b>Compilation Scale</b>	:	1 : 22 000
<b>Date Released</b>	:	27 <sup>th</sup> December 2018
<b>Description</b>	:	This new edition includes updated bathymetry and topography details covering western part of Johor Strait.  The existing cell of the same name released on 17 <sup>th</sup> July 2017 will be superseded.

<b>ENC Name</b>	:	SG5C4041
<b>Location</b>	:	Pulau Sebarok to Changi
<b>Coverage</b>	:	Lat 01° 07·40' N      01° 19·60' N Long 103° 45·60' E      104° 04·70' E
<b>Compilation Scale</b>	:	1 : 22 000
<b>Date Released</b>	:	27 <sup>th</sup> December 2018
<b>Description</b>	:	This new edition includes updated submarine cables, bathymetry and topography details covering Pulau Sebarok to Changi.  The existing cell of the same name released on 17 <sup>th</sup> July 2017 will be superseded.

<b>ENC Name</b>	:	SG5C4043
<b>Location</b>	:	Kuala Johor
<b>Coverage</b>	:	Lat 01° 16·10' N      01° 27·50' N Long 103° 59·80' E      104° 10·00' E
<b>Compilation Scale</b>	:	1 : 22 000
<b>Date Released</b>	:	27 <sup>th</sup> December 2018
<b>Description</b>	:	This new edition includes updated submarine cables and bathymetry details covering Kuala Johor.  The existing cell of the same name released on 17 <sup>th</sup> July 2017 will be superseded.



## II NEW CHARTS AND PUBLICATIONS

### NEW EDITION SINGAPORE ENC TO BE RELEASED ON 27<sup>TH</sup> DECEMBER 2018

<b>ENC Name</b>	:	SG5C4044
<b>Location</b>	:	Johor Strait - Eastern Part
<b>Coverage</b>	:	Lat 01° 16·10' N      01° 27·50' N Long 103° 59·80' E      104° 10·00' E
<b>Compilation Scale</b>	:	1 : 22 000
<b>Date Released</b>	:	27 <sup>th</sup> December 2018
<b>Description</b>	:	This new edition includes updated bathymetry and topography details covering Eastern Part of Johor Strait.  The existing cell of the same name released on 17 <sup>th</sup> July 2017 will be superseded.

<b>ENC Name</b>	:	SG54044A
<b>Location</b>	:	Serangoon Harbour
<b>Coverage</b>	:	Lat 01° 22·80' N      01° 24·70' N Long 103° 56·70' E      103° 59·60' E
<b>Compilation Scale</b>	:	1 : 12 000
<b>Date Released</b>	:	27 <sup>th</sup> December 2018
<b>Description</b>	:	This new edition includes updated bathymetry and topography details covering Serangoon Harbour.  The existing cell of the same name released on 17 <sup>th</sup> July 2017 will be superseded.

<b>ENC Name</b>	:	SG54044B
<b>Location</b>	:	Pelabuhan Johor (Johor Port)
<b>Coverage</b>	:	Lat 01° 25·20' N      01° 27·86' N Long 103° 51·60' E      103° 55·70' E
<b>Compilation Scale</b>	:	1 : 12 000
<b>Date Released</b>	:	27 <sup>th</sup> December 2018
<b>Description</b>	:	This new edition includes updated bathymetry and topography details covering Pelabuhan Johor (Johor Port)  The existing cell of the same name released on 17 <sup>th</sup> July 2017 will be superseded.

## II NEW CHARTS AND PUBLICATIONS

### NEW EDITION SINGAPORE ENC TO BE RELEASED ON 27<sup>TH</sup> DECEMBER 2018

<b>ENC Name</b>	:	SG54044C
<b>Location</b>	:	Sembawang
<b>Coverage</b>	:	Lat 01° 27·50' N      01° 29·10' N Long 103° 48·90' E      103° 50·50' E
<b>Compilation Scale</b>	:	1 : 8 000
<b>Date Released</b>	:	27 <sup>th</sup> December 2018
<b>Description</b>	:	This new edition includes updated bathymetry and topography details covering Sembawang.  The existing cell of the same name released on 17 <sup>th</sup> July 2017 will be superseded.

---

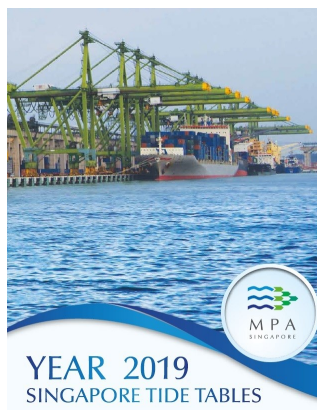
## II NEW CHARTS AND PUBLICATIONS

### SINGAPORE TIDE TABLES YEAR 2019 PUBLISHED ON 15<sup>TH</sup> SEPTEMBER 2018

#### Summary of Publication

This publication contains Tidal Height and Tidal Stream Predictions covering stations in Singapore Port Waters and along the Straits of Malacca and Singapore.

This publication consists of 5 segments.



**1. High and Low Water Predictions** at the following stations:

- a) Tanjong Pagar
- b) Sembawang

**2. Hourly Tidal Height Predictions** at the following stations:

- a) West Tuas
- b) Sultan Shoal Lighthouse
- c) Raffles Lighthouse
- d) West Coast
- e) Bukom
- f) Tanjong Pagar
- g) Tanah Merah
- h) Tanjong Changi
- i) Sembawang
- j) Singapore Strait - Horsburgh Lighthouse

**3. Hourly Tidal Stream Predictions** at the following stations:

- a) Main Strait - off Tuas View
- b) Sinki Fairway - Banyan
- c) Jong Fairway - off Sisters Buoy
- d) Main Strait - off Shell SBM Buoy
- e) Sentosa - off Cruise Bay
- f) East Buran
- g) Main Strait - Eastern Petroleum A
- h) Kuala Johor - off Malang Tiga

**4. Maximum and Slack Tidal Stream Predictions** at the following stations:

- a) Malacca Strait - off Pulau Iyu Kecil Light
- b) Singapore Strait - Selat Phillip
- c) Singapore Strait - Karang Banteng (Buffalo Rock)
- d) Singapore Strait - Horsburgh Lighthouse

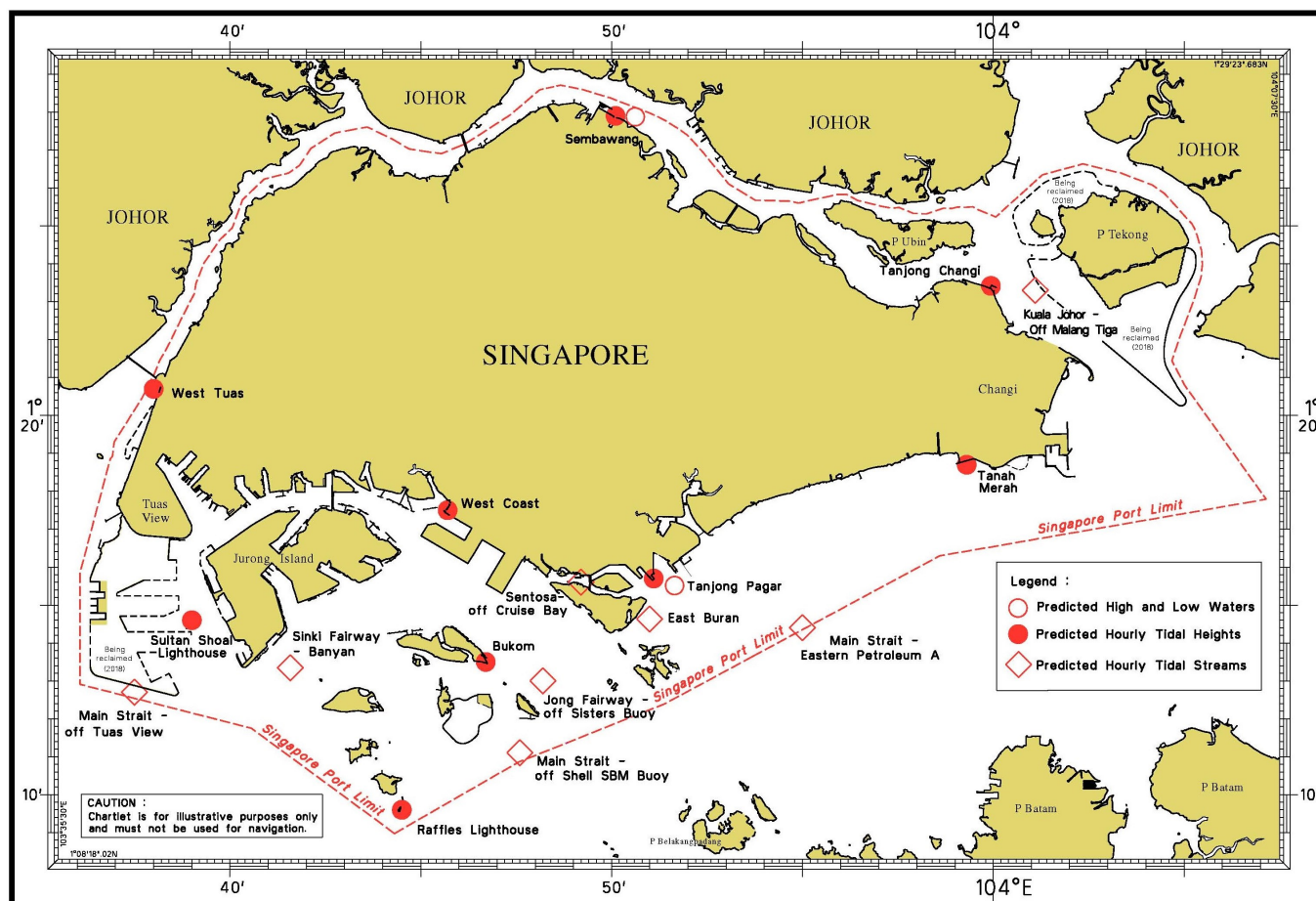
**5. Malacca Strait - High and Low Water Predictions** at the following stations:

- a) Kedah Pier, Pulau Pinang
- b) Port Dickson
- c) Kuala Batu Pahat

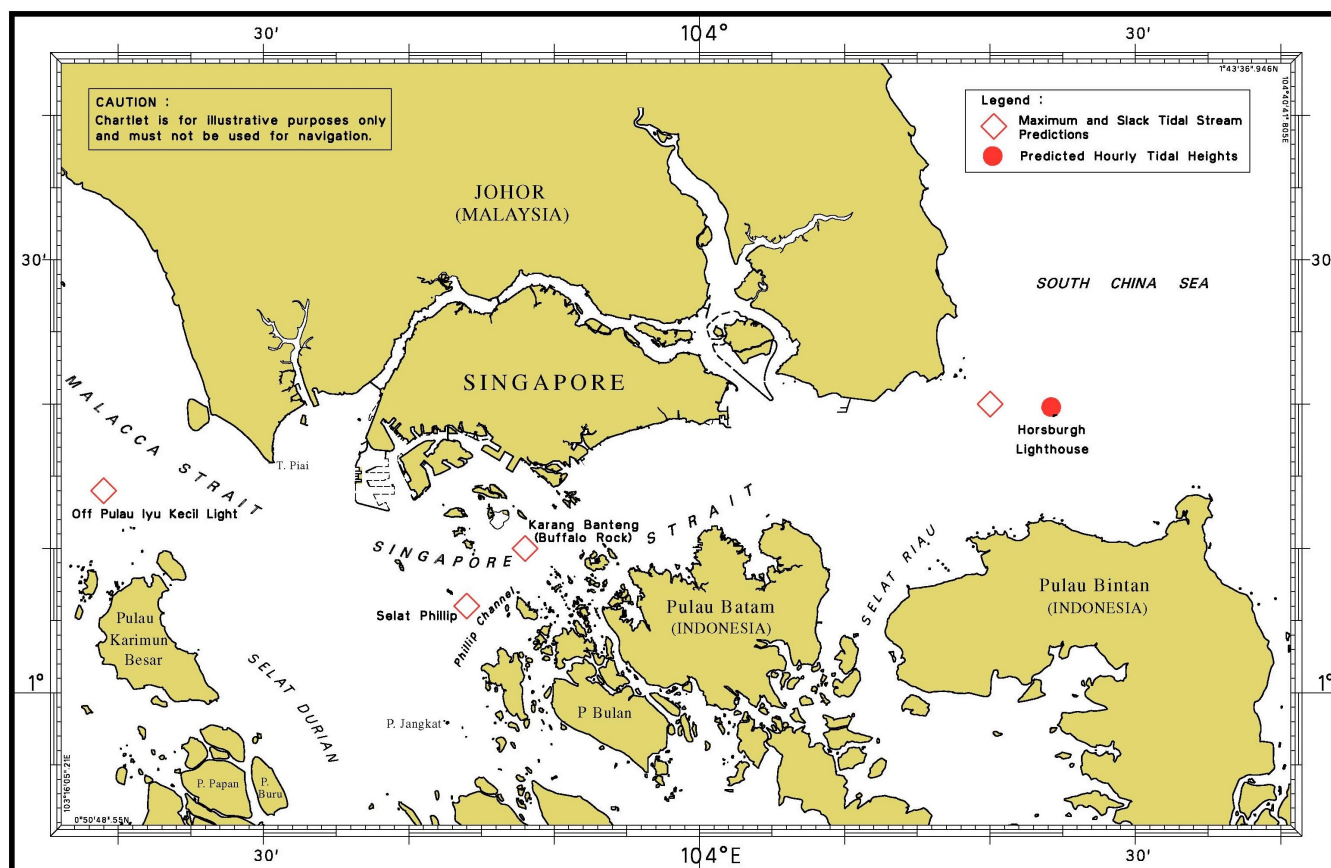
The locations of the above stations are shown in the chartlets below:

## II NEW CHARTS AND PUBLICATIONS

### Tidal Prediction Stations within Singapore Port Waters

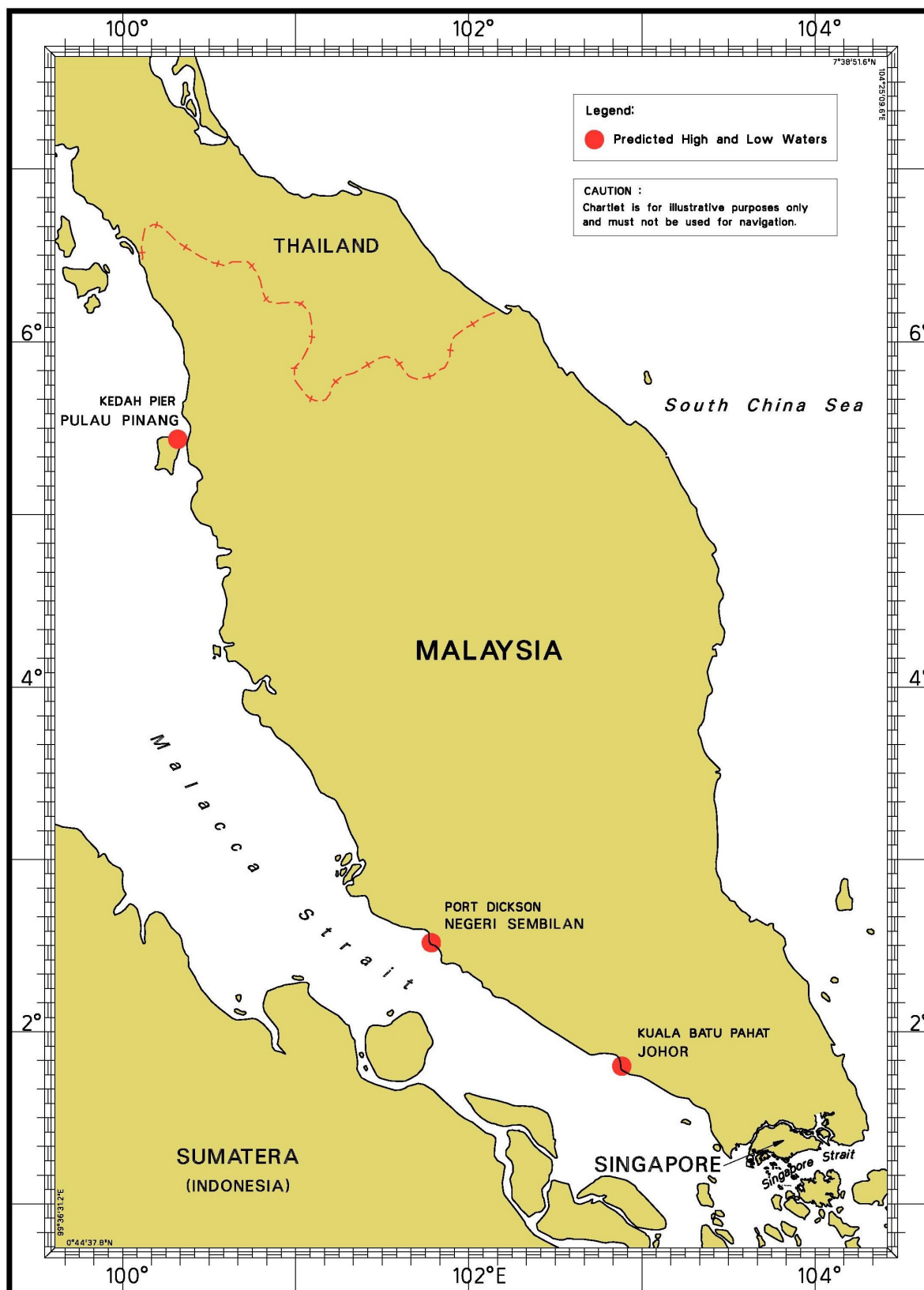


### Tidal Prediction Stations in Straits of Malacca and Singapore



## II NEW CHARTS AND PUBLICATIONS

### Tidal Prediction Stations In Malacca Strait




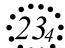
This publication can be purchased from any of the MPA appointed Chart Distributors.

Information on the MPA appointed Chart Distributors can be found from the following link:

<http://www.mpa.gov.sg/web/portal/home/media-centre/publications/singapore-tide-tables>

## II

## NOTICES TO MARINERS AND CHART CORRECTIONS

<b>GSP1/SP1</b>	3 Ed 15/1/18 Last NM 87/2018	(Maritime and Port Authority of Singapore)	<b>NM 92/2018</b>
<b>Amend</b>	<b>light to, Fl.Y.2,5s7m7M</b>	1°18·63'N 1°18·68'N	103°59·21'E 103°59·37'E
<b>Delete</b>	former limit of working area, pecked line, joining:	(Maritime and Port Authority of Singapore) 1°14·34'N 1°13·75'N 1°13·75'N and 1°13·75'N 1°13·49'N	<b>NM 93/2018</b> 103°38·99'E 103°39·22'E 103°38·99'E 103°38·05'E 103°37·82'E
<b>Insert</b>	limit of working area, pecked line, joining:	1°14·34'N 1°13·66'N and 1°13·49'N 1°13·49'N 1°13·68'N 1°13·68'N 1°13·49'N 1°13·49'N	103°38·99'E 103°39·25'E 103°38·89'E 103°38·38'E 103°38·29'E 103°38·14'E 103°37·98'E 103°37·82'E
<b>Move</b>	 Fl.Y.4s GMAPS01	from: to:	(Maritime and Port Authority of Singapore) <b>NM 94/2018</b> 1°13·75'N 1°13·68'N 103°38·25'E 103°38·29'E
<b>Insert</b>	#	(Maritime and Port Authority of Singapore)	<b>NM 95/2018</b> 1°12·12'N 103°48·14'E
<b>Insert</b>	 Wk	(Joint Hydrographic Survey of the Straits of Malacca and Singapore)	<b>NM 96/2018</b> 1°12·94'N 103°34·63'E

## II

## NOTICES TO MARINERS AND CHART CORRECTIONS

<b>200</b>	4 Ed 1/9/15 Last NM 88/2018	(Malaysia Marine Department Notice No. 149/2018)	<b>NM 97/2018</b>
------------	-----------------------------	--	-------------------

<b>Insert</b>	★ <b>Fl.R.2s6m5M</b>	2°34·65'N	101°43·35'E
---------------	----------------------	-----------	-------------

---

<b>202</b>	8 Ed 15/9/16 Last NM 82/2018	(Joint Hydrographic Survey of the Straits of Malacca and Singapore)	<b>NM 96/2018</b>
------------	------------------------------	---	-------------------

<b>Insert</b>	⊙ <b>23</b> Wk	1°12·94'N	103°34·63'E
---------------	----------------	-----------	-------------

		(Admiralty Notice No. 44/5129/18)	<b>NM 98/2018</b>
<b>Insert</b>	depth 5 <sub>3</sub> , <i>Rep(2018)</i> , and extend 10m contour E to enclose	1°05·62'N	104°09·82'E

---

<b>500</b>	8 Ed 15/9/16 Last NM 71/2018	(Maritime and Port Authority of Singapore)	<b>NM 93/2018</b>
------------	------------------------------	--	-------------------

<b>Delete</b>	former limit of working area, pecked line, joining:	1°14·34'N	103°38·99'E
		1°13·75'N	103°39·22'E
		1°13·75'N	103°38·99'E
		and	
		1°13·75'N	103°38·05'E
		1°13·49'N	103°37·82'E

<b>Insert</b>	limit of working area, pecked line, joining:	1°14·34'N	103°38·99'E
		1°13·66'N	103°39·25'E
		and	
		1°13·49'N	103°38·89'E
		1°13·49'N	103°38·38'E
		1°13·68'N	103°38·29'E
		1°13·68'N	103°38·14'E
		1°13·49'N	103°37·98'E
		1°13·49'N	103°37·82'E


		(Maritime and Port Authority of Singapore)	<b>NM 94/2018</b>
<b>Move</b>	⚓ <b>Fl.Y.4s GMAPS01</b>	from:	1°13·75'N 103°38·25'E
		to:	1°13·68'N 103°38·29'E

## II

## NOTICES TO MARINERS AND CHART CORRECTIONS

(Joint Hydrographic Survey of the Straits of Malacca and Singapore)

**NM 96/2018**

**Insert**  *Wk* 1°12·94'N 103°34·63'E

**501** 7 Ed 1/9/15 Last NM 72/2018 (Maritime and Port Authority of Singapore) **NM 93/2018**

**Delete** former limit of working area, pecked line, joining:

1°14·34'N	103°38·99'E
1°13·75'N	103°39·22'E
1°13·75'N	103°38·99'E
and	
1°13·75'N	103°38·05'E
1°13·49'N	103°37·82'E

**Insert** limit of working area, pecked line, joining:

1°14·34'N	103°38·99'E
1°13·66'N	103°39·25'E
and	
1°13·49'N	103°38·89'E
1°13·49'N	103°38·38'E
1°13·68'N	103°38·29'E
1°13·68'N	103°38·14'E
1°13·49'N	103°37·98'E
1°13·49'N	103°37·82'E

(Maritime and Port Authority of Singapore)

**NM 94/2018**

**Move**  *Fl.Y.4s GMAPS01* from: 1°13·75'N 103°38·25'E

to: 1°13·68'N 103°38·29'E

(Maritime and Port Authority of Singapore)

**NM 95/2018**

**Insert**  *#* 1°12·12'N 103°48·14'E

(Joint Hydrographic Survey of the Straits of Malacca and Singapore)

**NM 96/2018**

**Insert**  *Wk* 1°12·94'N 103°34·63'E

**502** 7 Ed 1/9/15 Last NM 80/2018 (Maritime and Port Authority of Singapore) **NM 92/2018**

**Amend** light to, **Fl.Y.2,5s7m7M**

1°18·63'N	103°59·21'E
1°18·68'N	103°59·37'E



## II

## TEMPORARY AND PRELIMINARY NOTICES

**\*(NM 99T/2018)** : **TEMASEK FAIRWAY TEMPORARY RE-ALIGNMENT - DRILLING AND BLASTING WORKS**

**Remarks** : Temasek Fairway will be temporary re-aligned due to Drilling and Blasting works within fairway limits. (refer to Maritime and Port Authority of Singapore and Singapore Port Marine Notice 118/2018)

**Working Period** : From 3 Dec 2018 to 2 June 2019  
Blasting works will be conducted from Mondays to Saturdays. And will only be conducted on Sundays and Public Holidays with prior approval by the relevant authorities.

Blasting works will be conducted within the specific blast window periods as stated below:

1. Blast window 1 - 0800hrs to 1000hrs
2. Blast window 1 - 1200hrs to 1400hrs
3. Blast window 1 - 1700hrs to 1830hrs

Drilling works will be conducted 24 hours daily. Including Sundays and Public Holidays.

1. Working area will be marked by the following buoys:

Buoy Name	Type	Light Characteristic	Latitude (N)	Longitude (E)
F2-DDJV-W2	West Cardinal	VQ(9)10s	1° 15'140'	103° 39'079'
F2-DDJV-E2	East Cardinal	Q(3)15s	1° 15'223'	103° 39'279'
F2-DDJV-E1	East Cardinal	Q(3)15s	1° 14'208'	103° 39'688'
F2-DDJV-W1	West Cardinal	VQ(9)10s	1° 14'317'	103° 39'411'

2. The re-aligned boundaries of Temasek Fairway are bounded by a line joining the following geographical positions:

(WGS84 Datum)

	Latitude (N)	Longitude (E)		
Temasek Fairway line joining:	1° 16'121'	103° 39'216'		
	1° 15'955'	103° 39'216'	Jurong Empat Buoy	(New position)
	1° 14'310'	103° 39'938'	Jurong Satu Buoy	(New position)
to:	1° 13'702'	103° 40'138'		
Temasek Fairway line joining:	1° 12'967'	103° 39'478'		
	1° 13'707'	103° 39'366'	Temasek Buoy	(New position)
	1° 14'179'	103° 39'176'	F2-DDJV-4 Buoy	(New position)
	1° 15'038'	103° 38'830'	F2-DDJV-3A Buoy	(New position)
to:	1° 15'440'	103° 38'709'	F2-DDJV-3 Buoy	(New position)

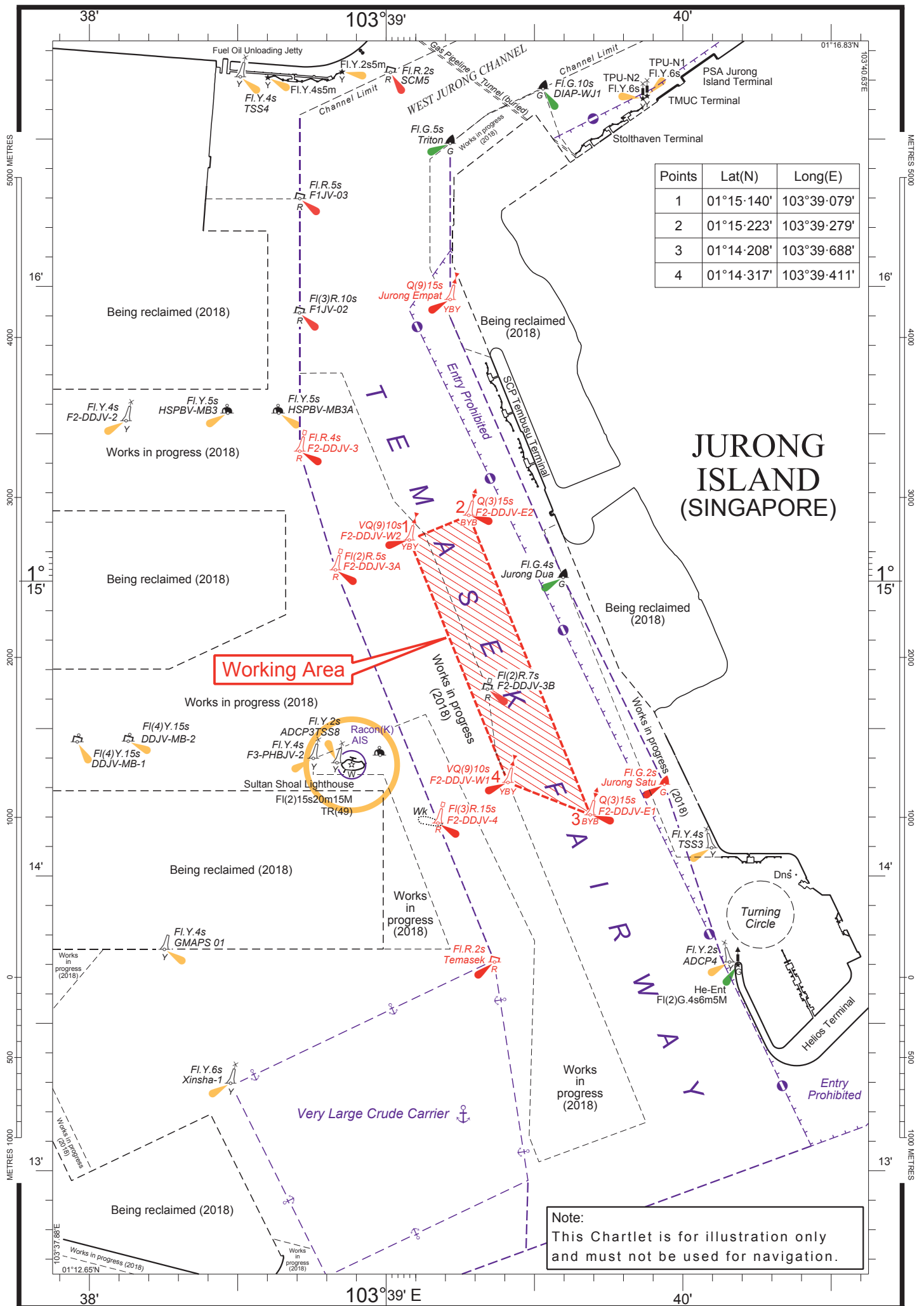
## II

**TEMPORARY AND PRELIMINARY NOTICES**

3. Mariners are advised to refer to the latest Port Marine Notices available at the MPA website for the latest information and navigate with caution.
4. Navigational warning broadcast will be promulgated by Singapore VTS on VHF Channel 22 and NAVTEX. Mariners are to maintain a listening watch.

**Charts affected** : Singaporean GSP1/SP1, 202, 500, 501, Dual-badged charts 4030, 4031, 4033, 4038 and 4040

-----  
Source: Maritime and Port Authority of Singapore



### III NAVIGATIONAL INFORMATION

(NM 100/2018)

**SINGAPORE PORT MARINE NOTICES/CIRCULARS**

The Port Marine Notices/Circulars shortlisted below would be of particular interest to Mariners. Details and complete list of Port Marine Notices/Circulars are available at this link:

<http://www.mpa.gov.sg/web/portal/home/port-of-singapore/circulars-and-notices>

**PMN No.****Subject**

106/2018	Dredging works off Sultan Shoal Lighthouse
107/2018	Replacement of floating sea barrier west of Jurong Island Causeway
108/2018	Works off south of Marina East
109/2018	Reclamation works at Ayer Merbau Basin
111/2018	Works at Tuas Western Coast
112/2018	Works at Tuas Terminal phase 2
113/2018	Supply and delivery of sand at Tuas View extension
114/2018	Installation of floating sea barrier off Sembawang Wharves
116/2018	Cable laying works in the East Johor Strait
118/2018	Drilling and blasting works in the Temasek Fairway

**PMC No.****Subject**

08/2018	Johor Bahru Port Limits (PMC 08/2018 is reproduced at pages 19-20)
---------	--

---

Source: Maritime and Port Authority of Singapore

### III NAVIGATIONAL INFORMATION

The following is a reprint of PMC 08/2018



MARITIME AND PORT AUTHORITY OF SINGAPORE

PORT MARINE CIRCULAR  
NO. 8 OF 2018

30 November 2018

Shipping Community  
Harbour Craft Community

#### **JOHOR BAHRU PORT LIMITS**

The Maritime and Port Authority of Singapore (MPA) would like to draw the attention of ship masters and owners of vessels to the Federal Government Gazette P.U. (B) 587 “*Declaration of Alteration of Port Limits for Johore Bahru Port*” published on 25 October 2018 (the “Gazette Notification”) by the Attorney General’s Chambers of Malaysia, Port Circular No. 88/2018 dated 11 November 2018, issued by the Director of Marine, Marine Department Malaysia, Southern Region (“PC 88/2018”), and Notice to Mariners No. 164/2018 dated 22 November 2018, issued by the Director General, Marine Department Malaysia (“NtM 164/2018”).

2 The Gazette Notification, PC 88/2018 and NtM 164/2018 purport to extend the port limits for Malaysia’s Johor Bahru Port in a manner which encroaches into Singapore’s territorial waters and the approaches to the Port of Singapore off Tuas. Accordingly, MPA does not recognise the port limits published in the Gazette Notification, PC 88/2018 and NtM 164/2018. Ship masters and owners of vessels should therefore disregard the Gazette Notification, PC 88/2018 and NtM 164/2018 which impinge on Singapore’s sovereignty.

3 MPA would also like to remind ship masters and owners of vessels that Singapore’s territorial waters extend westward of Singapore’s current port limits around Tuas and vessels operating in this area are to continue to comply with applicable Singapore regulations.

4 For any enquiry, please contact us at [pocc@mpa.gov.sg](mailto:pocc@mpa.gov.sg).

**III**  
**NAVIGATIONAL INFORMATION**

**The following is a reprint of PMC 08/2018**

CAPTAIN KEVIN WONG  
PORT MASTER  
MARITIME AND PORT AUTHORITY OF SINGAPORE

---

Source: Maritime and Port Authority of Singapore

### III AMENDMENTS TO PUBLICATIONS

\*(NM 101/2018) UPDATING OF PUBLICATION "SINGAPORE PORT INFORMATION 2018/2019"

#### CONTROLLING DEPTHS OF NAVIGATIONAL CHANNELS AND FAIRWAYS

1. Page 109

**Amend** the following:

LOCATIONS	DEPTHS (m)	REMARKS
West Jurong Channel	12·0	Note: A high spot of 11·6m exists (approximately 052° x 428m from Pesek Buoy)

#### CHARECTERISTICS OF AIDS TO NAVIGATION

2. Page 132

#### TUAS VIEW EXTENSION

**Amend** the following:

Name of Beacon/Buoy	Position Lat. N Long. E	Structure, Colour & Shape	Light Characteristic	Owner
GMAPS 01 Buoy	01°13·675' 103°38·290'	Yellow Pillar	Fl.Y.4s	GMAPS

:

### III AMENDMENTS TO PUBLICATIONS

3. Page 153

#### CHANGI EAST

Amend the following:

Name of Beacon/Buoy	Position Lat. N Long. E	Structure, Colour & Shape	Light Characteristic	Owner
TMFT-1 Beacon	01°18·634' 103°59·213'	Yellow Pillar with 'X' topmark	<b>Fl.Y.2,5s7m7M</b>	MPA
TMFT-2 Beacon	01°18·658' 103°59·291'	Yellow Pillar with 'X' topmark	<b>Fl.Y.2,5s7m7M</b>	MPA
TMFT-3 Beacon	01°18·681' 103°59·367'	Yellow Pillar with 'X' topmark	<b>Fl.Y.2,5s7m7M</b>	MPA

---

Source: Maritime and Port Authority of Singapore



## IV

### REPRINT OF MARITIME SAFETY INFORMATION

The following Maritime Safety Information have been shortlisted, as they would be of particular interest to mariners.

TT175

VESSELS IN EAST JOHOR STRAIT ARE ADVISED TO NAVIGATE WITH PARTICULAR ALERTNESS AND CAUTION WHEN NEAR THE PROJECT AREAS OFF PULAU TEKONG, CHANGI AND MALANG PAPAN AS SHALLOW WATER AREAS EXIST. VESSELS ARE REMINDED TO PROCEED AT A SAFE SPEED AND MAINTAIN A PROPER LOOKOUT, PARTICULARLY FOR TUGS AND BARGES NAVIGATING NEAR THE PROJECT AREAS AND PASSENGER FERRIES CROSSING BETWEEN CHANGI AND PULAU TEKONG AND VICINITY OF PASIR GUDANG.

TT273

ALL VESSELS ARE ADVISED TO NAVIGATE WITH CAUTION, COMPLY WITH THE COLREGS, MAINTAIN VHF RADIO WATCH AND LISTEN TO TRAFFIC INFORMATION WHEN NAVIGATING IN THE SINGAPORE STRAIT AND PORT WATERS. MARINERS ARE ALSO ADVISED TO KEEP A GOOD LOOKOUT OF FREQUENT FERRIES CROSSING THE SINGAPORE STRAIT.

TT363

MARINERS ARE REMINDED NOT TO ANCHOR IN ALL AREAS IN THE TSS, INCLUDING PRECAUTIONARY AREAS OF THE STRAITS OF MALACCA AND SINGAPORE AS WELL AS BETWEEN THE LANDWARD LIMITS OF THE TSS AND APPROACHES TO THE PORTS. VESSELS ENTERING ANY PORT IN ANY LITTORAL STATES ARE TO ANCHOR IN THE ANCHORAGES DESIGNATED BY THE RESPECTIVE LITTORAL STATES ONLY.

TT399

VESSELS ARRIVING TO SINGAPORE OR TRANSITING THROUGH THE STRAIT ARE RECOMMENDED TO UPDATE THEIR DESTINATION ACCURATELY IN THE AIS TO ENHANCE SITUATIONAL AWARENESS FOR OTHER TRAFFIC IN THE VICINITY. EXAMPLE: SG-PEBGB FOR PILOT EASTERN BOARDING GROUND BRAVO.

TT418

WEST BOUND DEEP DRAFT VESSELS AND VLCCS ARE REMINDED TO COMPLY WITH THE RULES OF VESSELS NAVIGATING THROUGH THE STRAITS OF MALACCA AND SINGAPORE (SOMS). THEY SHALL ALLOW FOR AN UKC OF AT LEAST 3.5 METRES AT ALL TIMES DURING THE ENTIRE PASSAGE THROUGH THE SOMS AND AS FAR AS IT IS SAFE & PRACTICABLE, PROCEED AT A SPEED OF NOT MORE THAN 12 KTS OVER THE GROUND IN THE WESTBOUND LANE OF THE SINGAPORE STRAIT (BETWEEN SOUTH OF ST JOHN'S ISLAND & RAFFLES LIGHTHOUSE).

THEY ARE ADVISED TO BROADCAST, 8 HOURS BEFORE ENTERING THE TSS, NAVIGATIONAL INFORMATION GIVING NAME, DEADWEIGHT, DRAUGHT, SPEED AND TIMES OF PASSING HORSBURGH LIGHTHOUSE AND RAFFLES LIGHTHOUSE.

TT426

ALL MARINERS ARE REMINDED TO NAVIGATE WITH CAUTION IN THE PRECAUTIONARY AREAS AND TSS, MAINTAIN A GOOD LOOKOUT FOR CROSSING TRAFFIC. VESSELS INTENDING TO CROSS THE TSS SHALL DO SO ONLY WHEN IT IS SAFE AND SHALL AT ALL TIMES COMPLY WITH THE COLLISION REGULATIONS.

TT430 (AMENDED ON 05 OCT 0115Z)

THE FOLLOWING ATONS AIS/RACONS ARE TEMPORARILY REMOVED FOR UPGRADING.  
ATONS WITH AIS TEMPORARILY REMOVED FOR UPGRADING:

1. ANGLER BUOY
2. BANYAN BEACON
3. RASU BUOY
4. RAFFLES LIGHTHOUSE
5. SAKIJANG BEACON
6. SELEGI BEACON

MARINERS ARE ADVISED TO NAVIGATE WITH CAUTION.

TT440

A NUMBER OF UNKNOWN VESSELS ARE OBSERVED ANCHORED IN THE TSS/PRECAUTIONARY AREA SOUTH OF TG. RAMUNIA AT APPROXIMATE POSITION 1°17'91"N 104°14'92"E. ALL VESSELS ARE ADVISED TO KEEP A GOOD LOOKOUT AND PROCEED WITH CAUTION WHEN PASSING THIS AREA IN THE SINGAPORE STRAIT.

**IV**  
**REPRINT OF MARITIME SAFETY INFORMATION**

TT465

DGPS SERVICE AT HORSBURGH LIGHTHOUSE (REFERENCE STATION 130/131) IN POSITION 1°19.8'N 104°24.34'E IS UNAVAILABLE. MARINERS ARE ADVISED TO USE ALTERNATE REFERENCE STATION AT RAFFLES LIGHTHOUSE (REFERENCE STATION 132/133).

TT961

VESSELS INTENDING TO CROSS THE TRAFFIC SEPERATION SCHEME (TSS) OR PRECAUTIONARY AREAS IN THE SINGAPORE STRAIT DURING THE HOURS OF DARKNESS ARE RECOMMENDED TO DISPLAY THE NIGHT SIGNALS CONSISTING OF 3 ALL ROUND GREEN LIGHTS IN A VERTICAL LINE AS DETAILED IN THE MARITIME AND PORT AUTHORITY OF SINGAPORE'S PORT MARINE CIRCULAR, 04 OF 2013 DATED 7 MAY 2013.

SR123

SEA ROBBERIES ARE REPORTED IN THE SINGAPORE STRAIT. ALL VESSELS TO REPORT ANY SUSPICIOUS CRAFT TO VTIS SINGAPORE.

ALL VESSELS IN THE VICINITY ARE REQUESTED TO KEEP A SHARP LOOKOUT, RENDER NECESSARY ASSISTANCE, AND REPORT ANY SIGHTINGS TO MRSC JOHOR OR NEAREST COASTAL MALAYSIAN AUTHORITIES FOR FURTHER INSTRUCTION.

---

ISSUED BY SINGAPORE PORT OPERATIONS CONTROL CENTRE (as at 25<sup>th</sup> Nov 2018)

**V**  
**EXTRACT OF ADMIRALTY NOTICES TO MARINERS**  
**FOR DUAL-BADGED CHARTS**

These notices can also be accessed directly from UKHO Website:

<https://www.admiralty.co.uk/maritime-safety-information/admiralty-notices-to-mariners>

**5118 SINGAPORE STRAIT - Buoyage.**

Source: UKHO and Marine Department. Malaysia Notice 121/18

Note: **Certain Copies Only**

**Chart 4042** [ *previous update 4971/18* ] WGS84 DATUM

Insert	<b>Fl.R.2s SPJ W2</b>	1°19·45'N	104°06·31'E
	<b>Fl.G.2s SPJ W1</b>	1°19·24'N	104°06·48'E
	<b>Fl(2)R.10s SPJ W4</b>	1°19·94'N	104°07·13'E
	<b>Fl(2)G.10s SPJ W3</b>	1°19·63'N	104°07·14'E
	<b>Fl.R.5s SPJ E3</b>	1°19·26'N	104°08·00'E
	<b>Fl(2)R.6s SPJ E2</b>	1°18·95'N	104°08·39'E
	<b>Fl(2)G.6s SPJ E1</b>	1°19·17'N	104°08·50'E

**Chart 4043** [ *previous update 4971/18* ] WGS84 DATUM

Insert	<b>Fl.R.2s SPJ W2</b>	1°19·45'N	104°06·31'E
	<b>Fl.G.2s SPJ W1</b>	1°19·24'N	104°06·48'E
	<b>Fl(2)R.10s SPJ W4</b>	1°19·94'N	104°07·13'E
	<b>Fl(2)G.10s SPJ W3</b>	1°19·63'N	104°07·14'E
	<b>Fl.R.5s SPJ E3</b>	1°19·26'N	104°08·00'E
	<b>Fl(2)R.6s SPJ E2</b>	1°18·95'N	104°08·39'E
	<b>Fl(2)G.6s SPJ E1</b>	1°19·17'N	104°08·50'E

**5263 SINGAPORE - Dredged depth**

Source: Maritime and Port Authority of Singapore

**Chart 4032** [ *previous update New Edition 20/09/2018* ] WGS84 DATUM

Amend	dredged depth to, <b>14·2m (2018)</b> , centered on:	1°15·640'N	103°43·613'E
-------	--	------------	--------------

**Chart 4034** [ *previous update New Edition 20/09/2018* ] WGS84 DATUM

Amend	dredged depth to, <b>14·2m (2018)</b> , centered on:	1°15·640'N	103°43·613'E
-------	--	------------	--------------

**V**  
**EXTRACT OF ADMIRALTY NOTICES TO MARINERS**  
**FOR DUAL-BADGED CHARTS**

These notices can also be accessed directly from UKHO Website:

<https://www.admiralty.co.uk/maritime-safety-information/admiralty-notices-to-mariners>

**5385 SINGAPORE - Buoyage.**

Source: Maritime and Port Authority of Singapore

**Chart 4030** [ *previous update New Edition 20/09/2018* ] WGS84 DATUM

Insert	<b>Fl.Y.4s F3-PHBJV-1</b>	1°14.398'N	103°37.399'E
	<b>Fl.Y.4s F3-PHBJV-2</b>	1°14.398'N	103°38.755'E
Delete	<i>Fl.Y.4s F2-DDJV-6</i>	1°14.290'N	103°37.942'E
	<i>Fl.Y.4s F2-DDJV-5</i>	1°14.290'N	103°38.553'E

**Chart 4031** [ *previous update New Edition 20/09/2018* ] WGS84 DATUM

Insert	<b>Fl.Y.4s F3-PHBJV-2</b>	1°14.398'N	103°38.755'E
Delete	<i>Fl.Y.4s F2-DDJV-5</i>	1°14.290'N	103°38.553'E

**Chart 4038** [ *previous update 4927/18* ] WGS84 DATUM

Insert	<b>Fl.Y.4s F3-PHBJV-1</b>	1°14.40'N	103°37.40'E
	<b>Fl.Y.4s F3-PHBJV-2</b>	1°14.40'N	103°38.76'E
Move	<i>Fl.G.2s PKHDB-21, from:</i>	1°14.37'N	103°36.27'E
	<i>to:</i>	1°14.42'N	103°36.27'E
Delete	<i>Fl.Y.4s F2-DDJV-6</i>	1°14.29'N	103°37.94'E
	<i>Fl.Y.4s F2-DDJV-5</i>	1°14.29'N	103°38.55'E

**Chart 4040** [ *previous update 4927/18* ] WGS84 DATUM

Insert	<b>Fl.Y.4s F3-PHBJV-1</b>	1°14.40'N	103°37.40'E
	<b>Fl.Y.4s F3-PHBJV-2</b>	1°14.40'N	103°38.76'E
Move	<i>Fl.G.2s PKHDB-21, from:</i>	1°14.37'N	103°36.27'E
	<i>to:</i>	1°14.42'N	103°36.27'E
Delete	<i>Fl.Y.4s F2-DDJV-6</i>	1°14.29'N	103°37.94'E
	<i>Fl.Y.4s F2-DDJV-5</i>	1°14.29'N	103°38.55'E

-----  
 Updated to Admiralty Notices to Mariners No. 48 of 2018 dated 29<sup>th</sup> November 2018

## **HYDROGRAPHIC NOTE - Instructions**

1. Mariners are requested to notify the Chief Hydrographer, Maritime and Port Authority of Singapore, when new or suspected dangers to navigation are discovered, changes are observed in aids to navigation or where corrections to nautical publications may be necessary. Reports, which cannot be confirmed or are lacking in certain details should not be withheld.
2. Any ambiguities of time, positioning and depth should be stressed and any firm expectation of being able to check the information provided on a following voyage should be mentioned.
3. Mariners using satellite position fixing systems, eg. GPS, should provide details of equipment and datum used (where applicable). Where bearings (true or magnetic) are taken visually or by radar to fix a position, it should include more than two objects in order to provide a check on its accuracy. A position may also be defined by bearing and distance from a conspicuous object eg. beacon, lighthouse etc.
4. The note should include a tracing or a digital image of the chart used and the details should be clearly marked.
5. Echo sounders frequently register greater depths than the advertised maximum depth for the equipment, eg. a trace appearing at 50 metres may be in fact be 550 metres or even 1050 metres for equipment whose maximum depth is 500 metres. Erroneous depths caused by 2nd transmission error can usually be recognised by the following:
  - (a) the tracing being weaker than normal for the depth registered,
  - (b) the trace appearing to pass through the transmission line,
  - (c) the feathery nature of the trace.
6. Upon receipt of a hydrographic note, a Notice to Mariners may be issued. The sender's vessel or name is quoted as the source unless the same information is also received in foreign Notices to Mariners.
7. Reports of shoals, uncharted dangers and defects in aids to navigation may also be made to the appropriate Singapore Port Operations Control Centre on VHF Channels 10, 12, 14, 68 or 73.

## HYDROGRAPHIC NOTE

To:

Chief Hydrographer  
Maritime and Port Authority of Singapore  
7B Keppel Road #20-00 Tanjong Pagar Complex  
Singapore 089055

Tel : (65) 6325 2027  
Fax : (65) 6226 1076  
Email : [hydrographic@mpa.gov.sg](mailto:hydrographic@mpa.gov.sg)

### **Sender's Contact Details** :

Date : .....

Name of Vessel : .....

Address of Sender : .....

Tel : ..... Fax : .....

Email : .....

### **Nature of Observation** :

General Location : .....

Subject : .....

Position : Lat. .... Long. ....

Charts Used : .....

Date & Time of Observation : .....

Details : .....

.....

.....

Attachment : .....

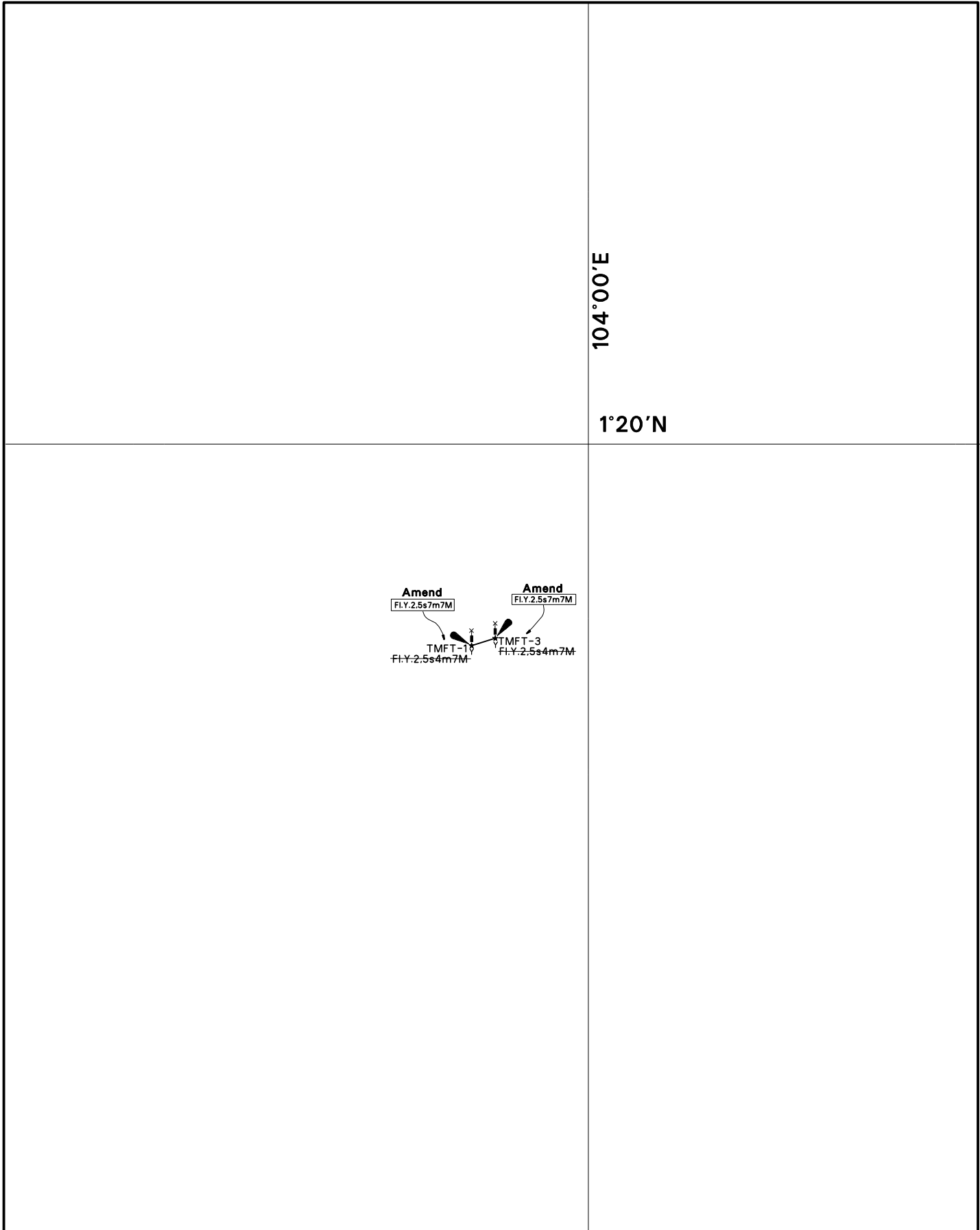
### **Equipment Used** :

Type of Position Fixing : ..... GPS / DGPS ..... Others : .....

Type of Echo Sounder : .....

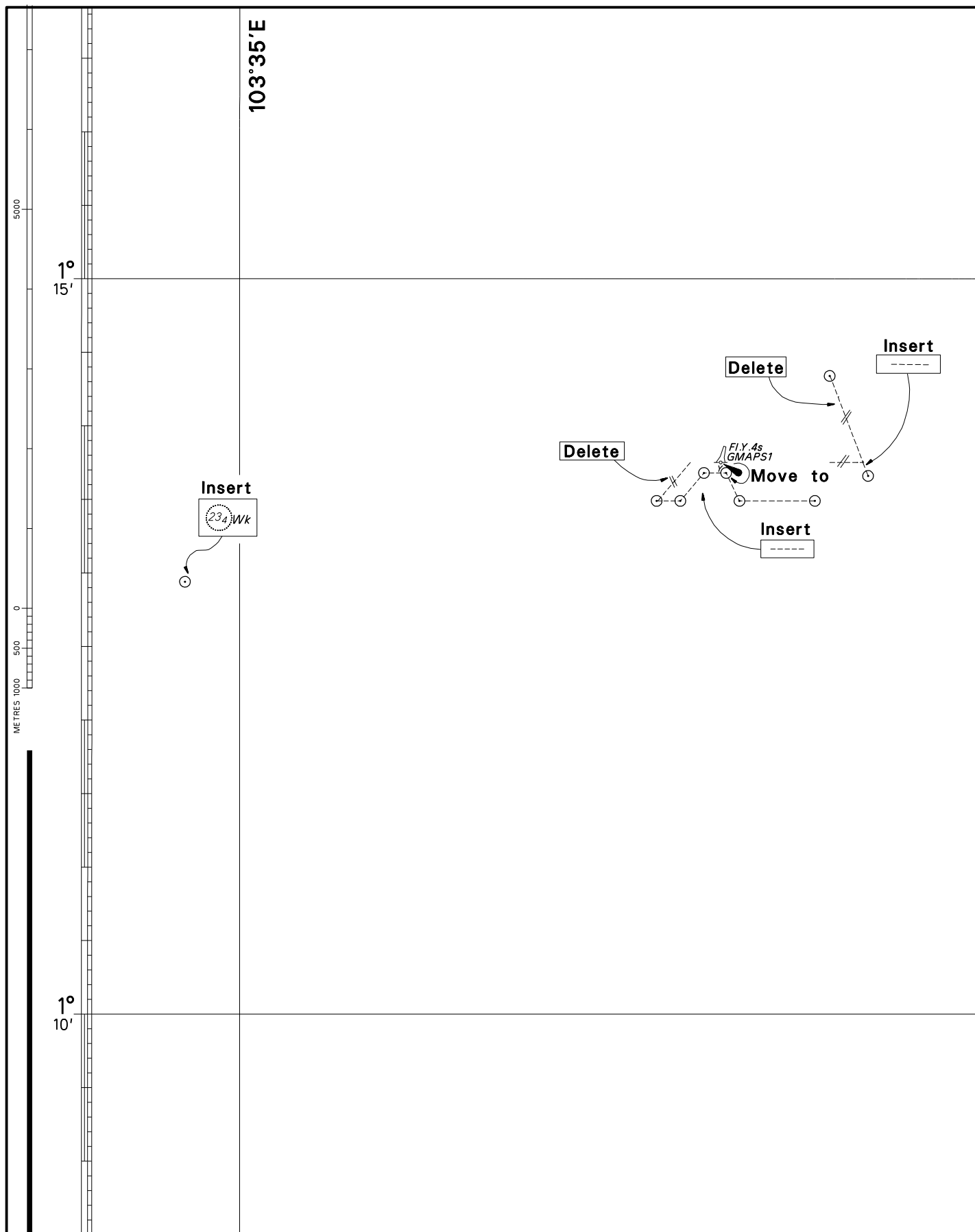
Name and Signature : .....

Ship's/Company's Stamp : .....



CORRECTION NO.	SNM EDN NO.	LAST CORR N O.	CHART NO.	Location on Chart		
92	12/2018	87/2018	GSP1/SP1			X

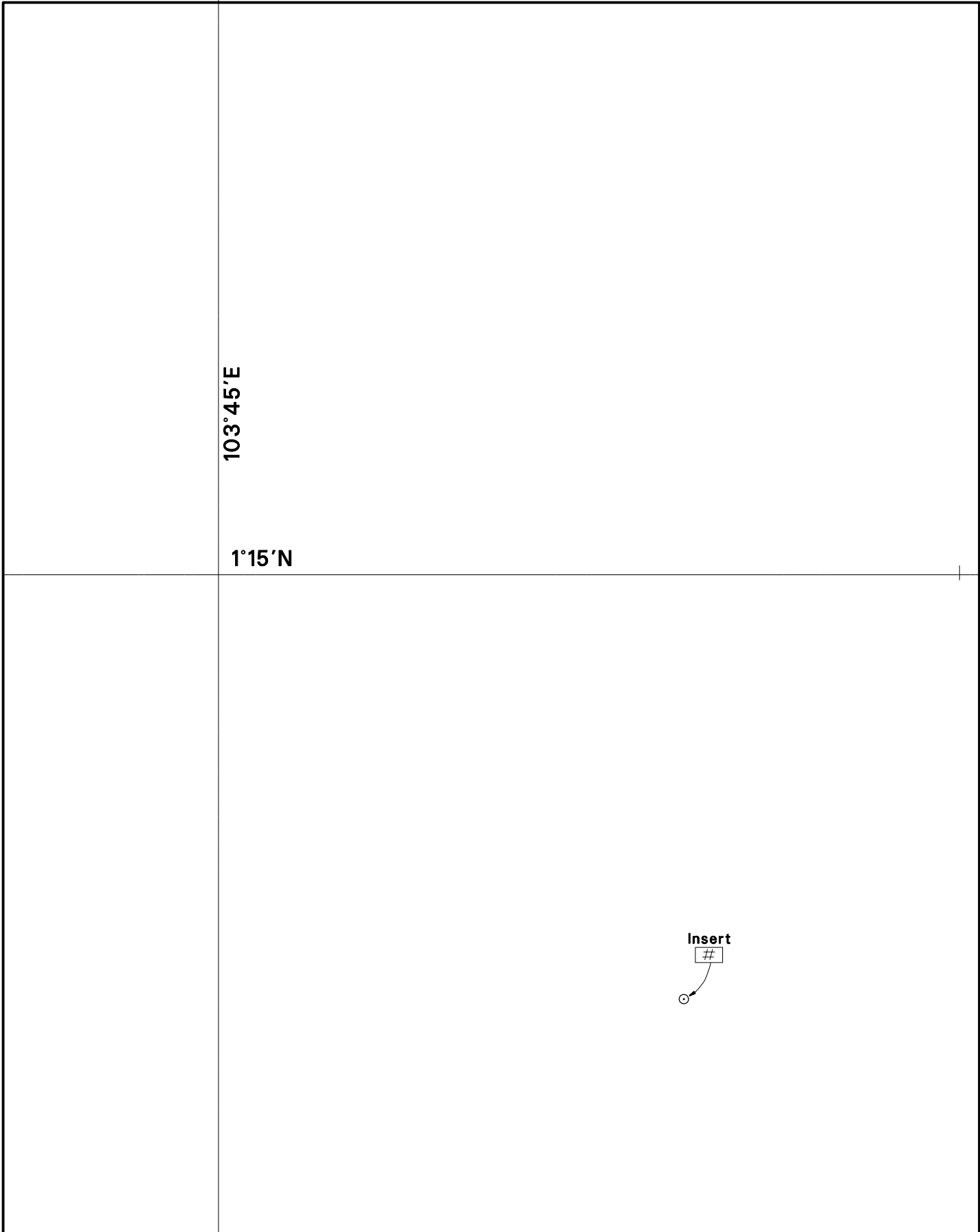
Caution: some computer printers might distort the tracings.  
Users are advised to check and, if necessary, adjust settings on the printer



CORRECTION NO.	SNM EDN NO.	LAST CORRNO NO.	CHART NO.	Location on Chart		
				X		
93, 94, 96	12/2018	92/2018	GSP1/SP1			

Caution: some computer printers might distort the tracings.  
Users are advised to check and, if necessary, adjust settings on the printer



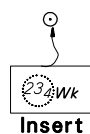


CORRECTION NO.	SNM EDN NO.	LAST CORR N NO.	CHART NO.	Location on Chart		
95	12/2018	94/2018	GSP1/SP1		X	

Caution: some computer printers might distort the tracings.  
Users are advised to check and, if necessary, adjust settings on the printer

	2°40'N			
	101°40'E			
<div>Insert</div> <div>☆ F.I.R. 2s6m5M</div>				
CORRECTION NO.	SNM EDN NO.	LAST CORR N NO.	CHART NO.	Location on Chart
97	12/2018	88/2018	200	X

Caution: some computer printers might distort the tracings.  
Users are advised to check and, if necessary, adjust settings on the printer



103°40'E

1°00'N

CORRECTION NO.	SNM EDN NO.	LAST CORR N NO.	CHART NO.	Location on Chart		
96	12/2018	82/2018	202	X		

Caution: some computer printers might distort the tracings.  
Users are advised to check and, if necessary, adjust settings on the printer

Insert depth and  
extend contour

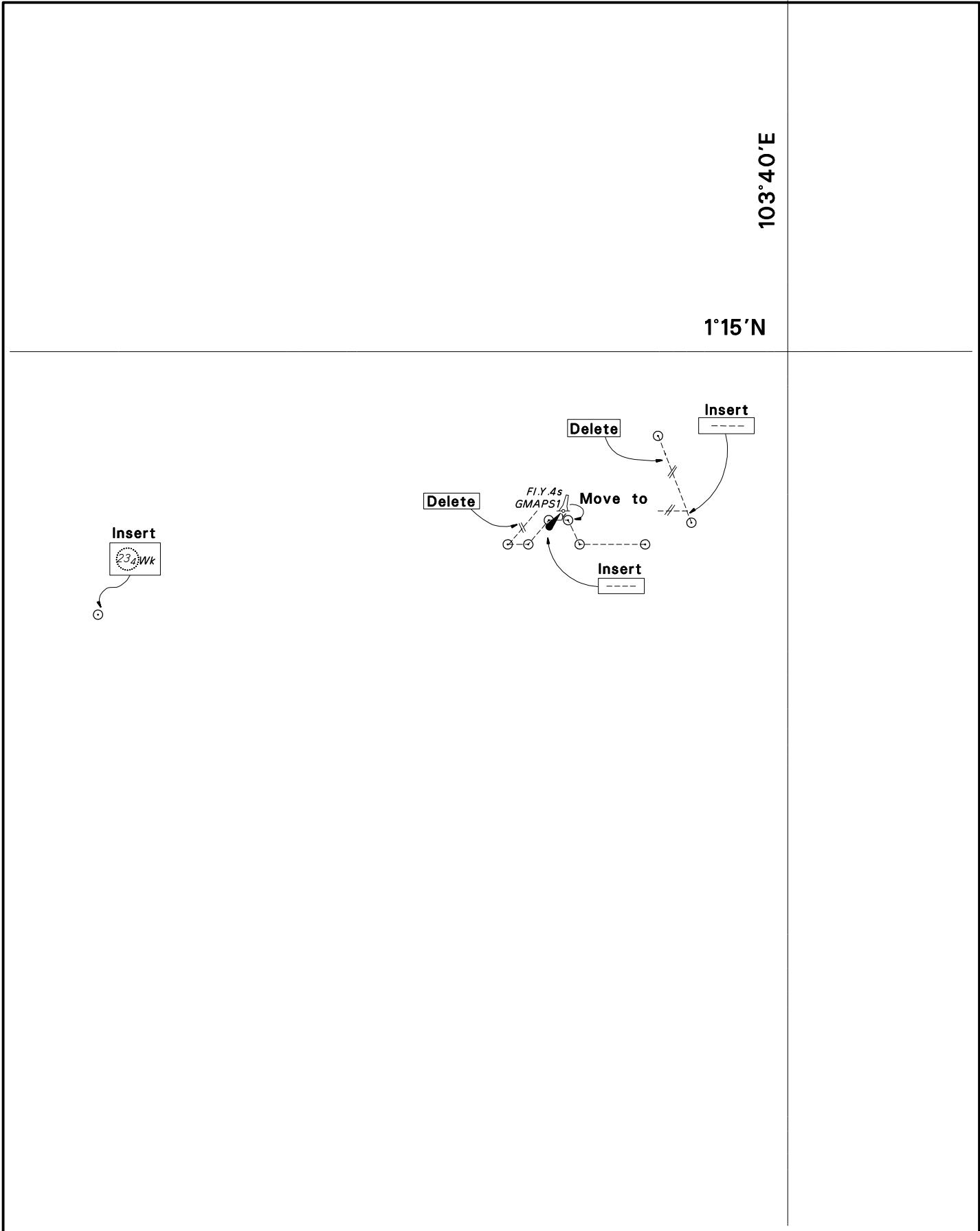
82  
53 Rep 2018

104°20'E

1°00'N

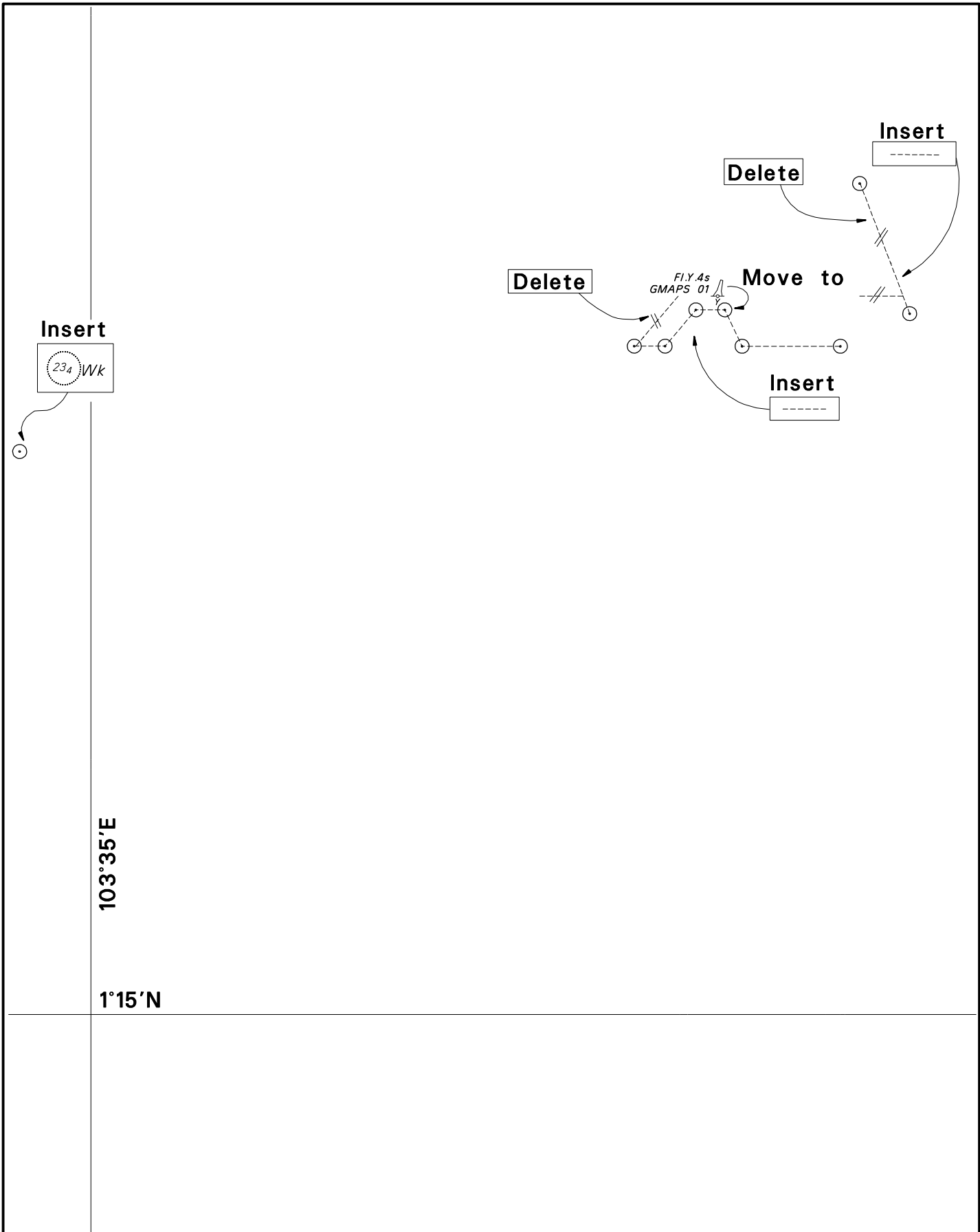
CORRECTION NO.	SNM EDN NO.	LAST CORR N NO.	CHART NO.	Location on Chart		
98	12/2018	96/2018	202			X

Caution: some computer printers might distort the tracings.  
Users are advised to check and, if necessary, adjust settings on the printer



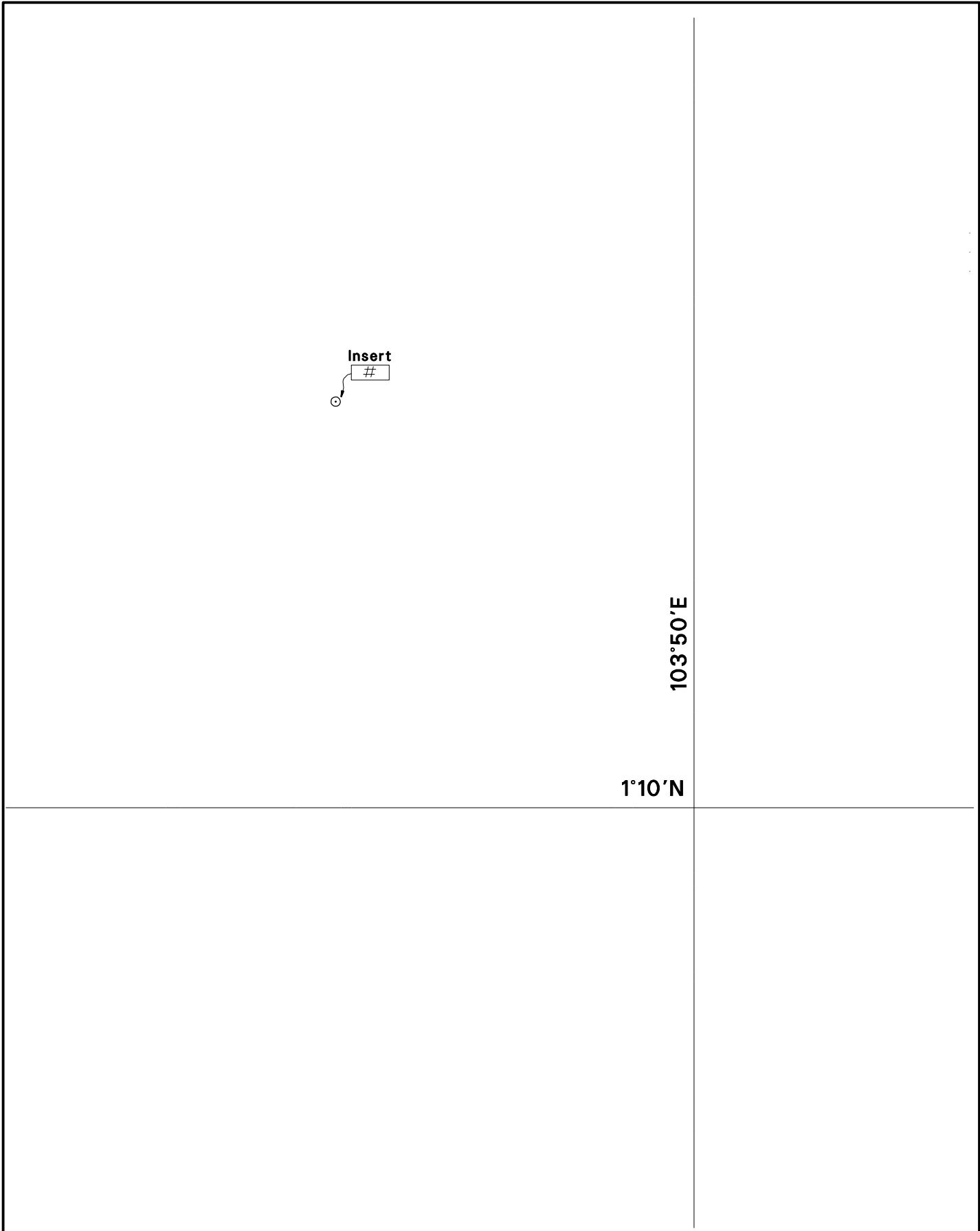
CORRECTION NO.	SNM EDN NO.	LAST CORR N NO.	CHART NO.	Location on Chart		
93, 94, 96	12/2018	71/2018	500			X

Caution: some computer printers might distort the tracings.  
Users are advised to check and, if necessary, adjust settings on the printer



CORRECTION NO.	SNM EDN NO.	LAST CORRNO NO.	CHART NO.	Location on Chart		
				X		
93, 94, 96	12/2018	72/2018	501			

Caution: some computer printers might distort the tracings.  
Users are advised to check and, if necessary, adjust settings on the printer

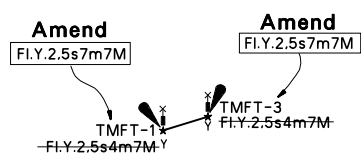


CORRECTION NO.	SNM EDN NO.	LAST CORR N NO.	CHART NO.	Location on Chart		
						X
95	12/2018	94/2018	501			

Caution: some computer printers might distort the tracings.  
Users are advised to check and, if necessary, adjust settings on the printer

104°00'E

1°20'N



CORRECTION NO.	SNM EDN NO.	LAST CORR N NO.	CHART NO.	Location on Chart		
92	12/2018	80/2018	502	X		

Caution: some computer printers might distort the tracings.  
Users are advised to check and, if necessary, adjust settings on the printer