



SINGAPOREAN NOTICES TO MARINERS

	CONTENT	Page
I	Index of Charts & Publications	25
II	New Publications	28
	Notices to Mariners and Chart Corrections	30
	Temporary and Preliminary Notices	31
III	Navigational Information	32
	Amendments to Publications	33
IV	Reprint of Radio Navigational Warnings	34
V	Reprint of Admiralty Notices to Mariners for Dual Badged Charts	35

The monthly Notices to Mariners contain corrective information affecting charts published by the Hydrographic Department, Maritime and Port Authority of Singapore. The information contained in these Notices should be updated on the charts affected. Notices under Section II apply only to the particular Singaporean Chart(s) indicated.

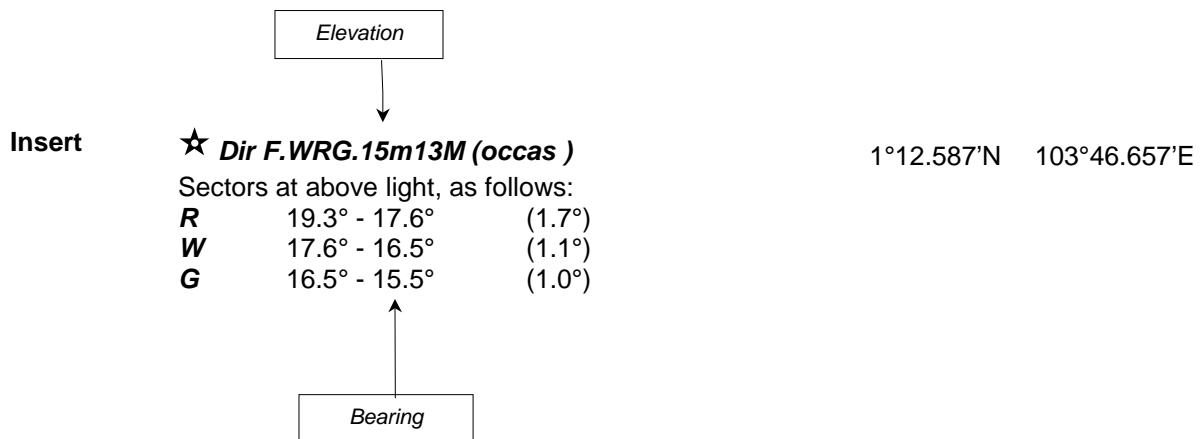
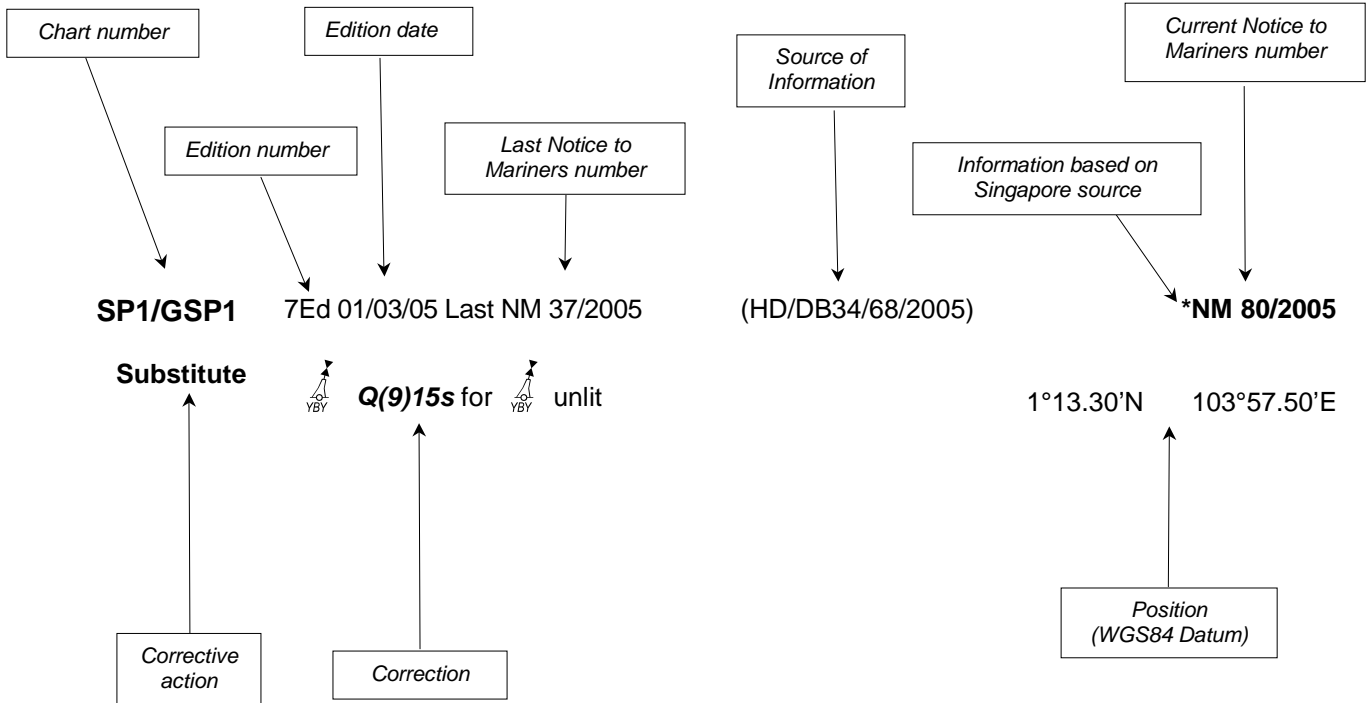
Mariners are requested to notify the Chief Hydrographer, Maritime and Port Authority of Singapore, immediately on the discovery of new dangers or suspected dangers to navigation and of changes or defects in aids to navigation. See Hydrographic Note on back page.

The monthly Singapore Notices to Mariners can be accessed directly from the MPA website:
<http://www.mpa.gov.sg/infocentre/publications/noticesmari.htm>
This service is offered free of charge.

Hydrographic Department
Maritime and Port Authority of Singapore
P.O. Box 313
PSA Building Post Office
Singapore 911141
Tel : (65) 6375 1227
Fax : (65) 6278 7646

EXPLANATION OF FORMAT

The elements of a typical chart correction are explained below.



Notes:

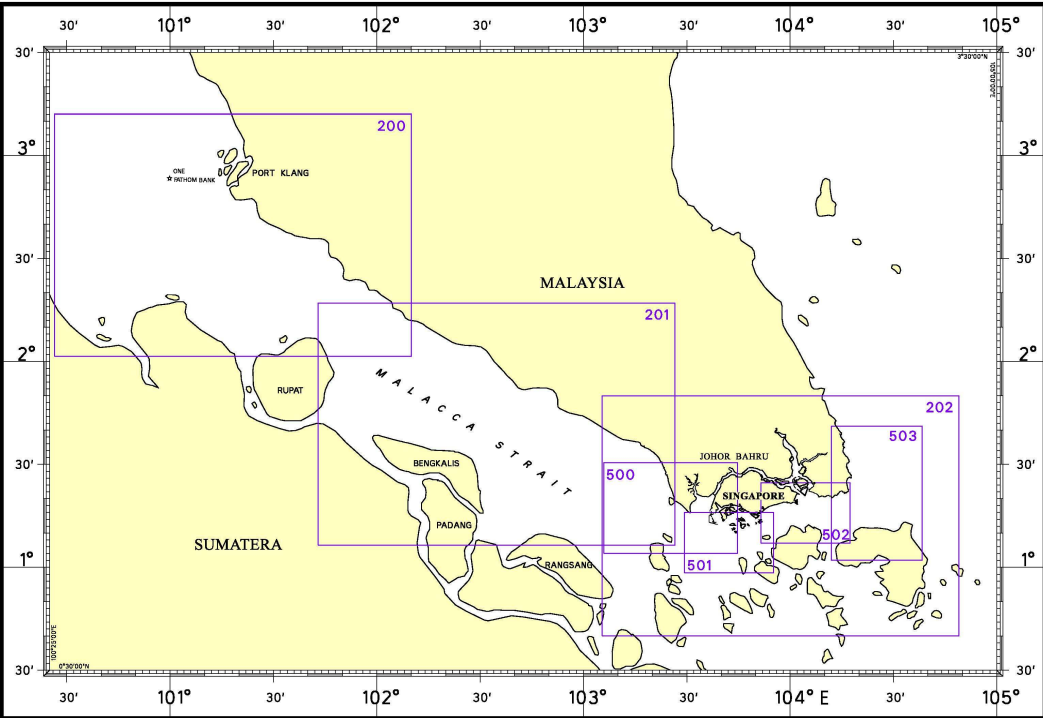
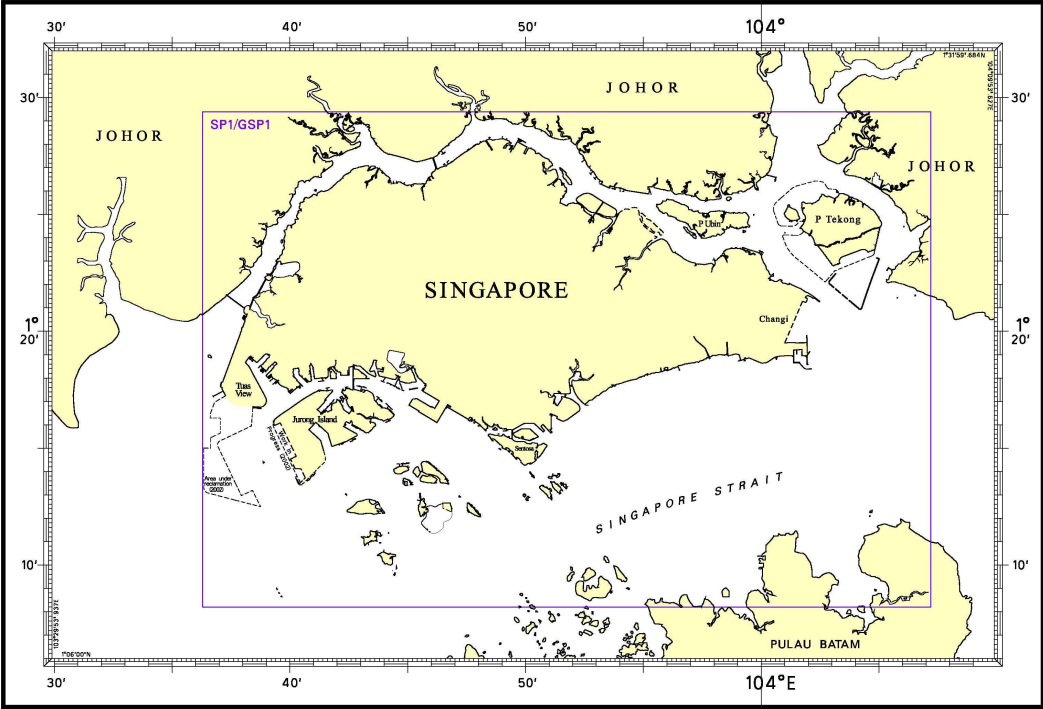
- a) Notice to Mariners number followed by:
 - T** indicates a Temporary Notice (eg. *NM 80T/2005).
 - P** indicates a Preliminary Notice (eg. *NM 80P/2005).
- b) Bearings are referred to True Compass in degrees clockwise from 000° to 359°. Bearings related to lights are from seaward.
- c) Heights and elevations are above Mean High Water Springs.

I

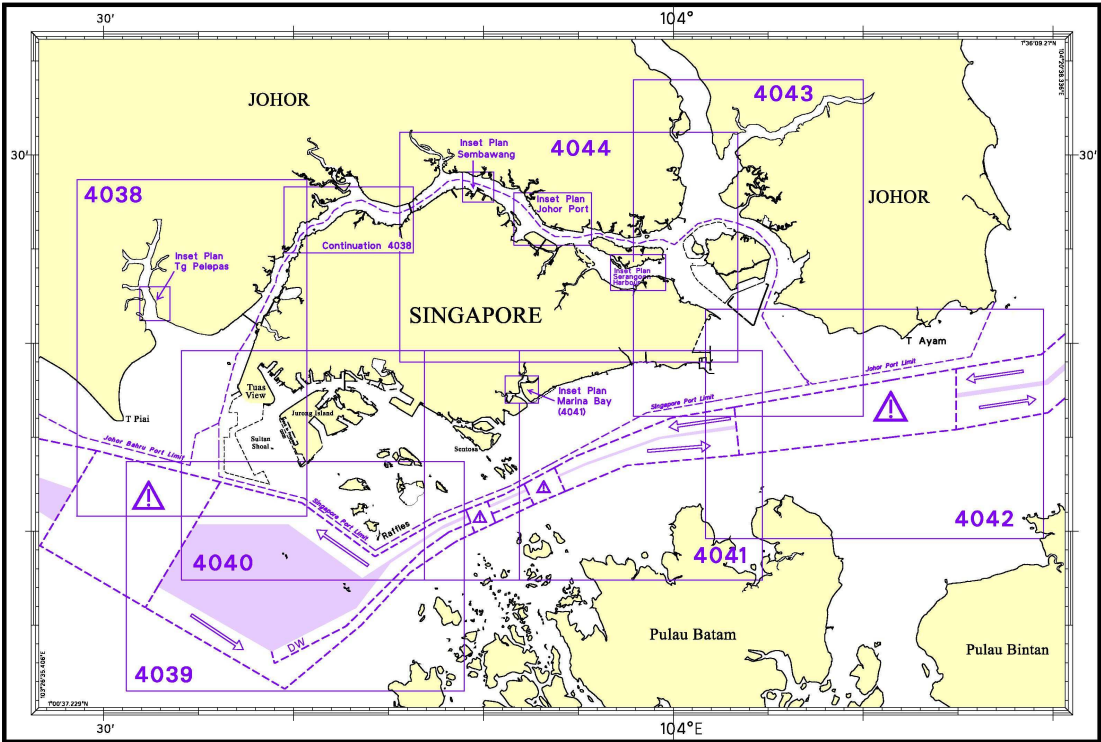
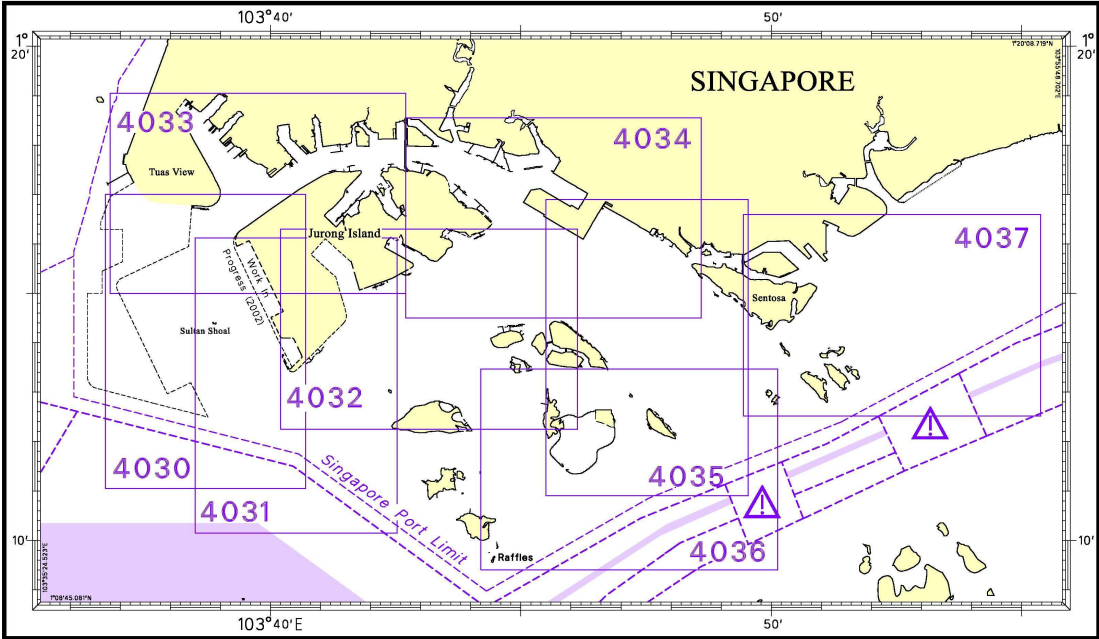
INDEX OF CHARTS AND PUBLICATIONS

NOTICES	DESCRIPTION	PAGE	NOTICES	DESCRIPTION	PAGE
	INDEX OF SINGAPOREAN CHARTS	26			
	INDEX OF DUAL BADGED CHARTS	27			
	New Edition SINGAPOREAN CHARTS	28			
	New Edition DUAL BADGED CHART	29			
*11	SP1/GSP1	30			
*12	200	30			
*13	202	30			
*14	202	30			
*15	202	30			
*16	Port Marine Circulars	32			
*17	Updating of Publication "SINGAPORE PORT INFORMATION"	33			

I
INDEX OF CHARTS AND PUBLICATIONS
INDEX OF SINGAPOREAN CHARTS



I
INDEX OF CHARTS AND PUBLICATIONS
INDEX OF DUAL BADGED CHARTS



II NEW PUBLICATIONS

NEW EDITION SINGAPOREAN CHART PUBLISHED ON 31 JANUARY 2007

Chart No. : CHARTS FOR SMALL CRAFT
Title : Singapore Strait and Adjacent Waterways – 2007 Edition
Date Published : 31 January 2007
Remarks : The publication contains 19 Small Craft Charts and related nautical information bound into an atlas measuring 600 X 400 mm. The pages are laminated to prevent damage from seawater.
 The symbols, abbreviations and terms depicted on these charts are consistent with the International Hydrographic Organization Chart Standards and Specifications.
 Symbols for the locations of pleasure craft facilities and areas for sea sport activities such as board sailing, dinghy sailing, keelboat sailing, power-boating and water-skiing are also included and highlighted in red.
 Chart of the same publication 2005 Edition published on 28 January 2005 would be superseded.

Price (Excluding GST) : S\$91.00


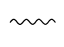
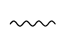


Charts are available from : Motion Smith
 76 Shenton Way #01-01
 Singapore 079119
 Tel : (65) 6220 5098
 (After office hours, Pager No.9304 4156, 9304 4159)
 Fax : (65) 6225 4902
 Email : sales@motsmith.com
 Internet Website : <http://www.motsmith.com>

NEW EDITION DUAL BADGED CHART TO BE PUBLISHED ON 22 FEBRUARY 2007

Chart No. : 4044
Title : Johor Strait, Eastern Part
Coverage : Lat 1° 19.00' N 1° 31.20' N
 Long 103° 45.60' E 104° 03.40' E
Scale : 1:30 000
Date Published : 22 February 2007
Size of chart : 1100.5 x 744.5 mm
Remarks : This new edition includes updates in topographic details such as Sembawang Dock, Pulau Serangoon , Loyang Regional Base, Changi Creek and Changi Point Ferry Terminal. The existing chart of the same number published on 26 September 2002 is superseded.

Charts are available from : Motion Smith
 76 Shenton Way #01-01
 Singapore 079119
 Tel : (65) 6220 5098
 (After office hours, Pager No.9304 4156, 9304 4159)
 Fax : (65) 6225 4902
 Email : sales@motsmith.com
 Internet Website : <http://www.motsmith.com>

II
NOTICES TO MARINERS AND CHART CORRECTIONS

SP1/GSP1	1Ed 03/01/07 Last NM 04/2007	(HD/HE025/162/2006)	*NM 11/2007
Insert	 LFI.10s, MSP		1°16.30'N 103°52.04'E
<hr/>			
200	2Ed 30/11/05 Last NM 97/2006	(Royal Malaysian Navy MNM Edn 9/116/2006)	*NM 12/2007
Delete	Submarine cable,  , joining:		2°53.35'N 101°11.40'E (existing cable) 2°50.49'N 101°13.70'E 2°50.00'N 101°15.35'E 2°52.49'N 101°16.34'E (existing cable)
Insert	Submarine cable,  , joining:		2°53.35'N 101°11.40'E (existing cable) 2°52.49'N 101°16.34'E (existing cable)
<hr/>			
202	5Ed 19/10/06 Last NM 151/2006	(Admiralty Notices 2/98/2007)	*NM 13/2007
Insert	legend, Bridge under construction (2006), centred at:		1°31.70'N 104°01.40'E
Delete	 LFI.15s26m12M	(Admiralty Notices 807/1982)	*NM 14/2007 0°52.19'N 104°24.07'E
Delete	 FI.3s	(USNM 36/1988)	*NM 15/2007 0°51.17'N 104°24.53'E
<hr/>			

II
TEMPORARY AND PRELIMINARY NOTICES

Nil

III
NAVIGATIONAL INFORMATION

***(NM 16/2007) PORT MARINE CIRCULARS**

These new circulars can be accessed directly from MPA website:
http://www.mpa.gov.sg/circulars_and_notices/portmarine_circulars/pm_circulars.htm

PMC No.	Subject
22/2006	Harbour Craft Transponder System (HARTS)
23/2006	Special Bunkering Anchorage Scheme (SBA) – Additional Anchorages in the Eastern Port Waters.

III AMENDMENTS TO PUBLICATIONS

***(NM 17/2007) UPDATING OF PUBLICATION “SINGAPORE PORT INFORMATION 2006/2007 EDITION”**

1) Page 157

Item 35, PULAU SEBAROK (SINGAPORT CLEANSEAS PTE LTD) (1°12.5'N, 103°47.7'E)

Delete the following:

Berth	Length of Berth	Depth Alongside (Year Surveyed)	Controlling Depth In Approaches
Pier 2	264	11.7m (2001)	-

Source: HD/HY Codes C00113006

2) Page 158

Item 37, PULAU SEBAROK (VOPAK TERMINALS SINGAPORE PTE LTD) (1°12.3'N, 103°47.8'E)

Substitute the following:

Berth	Length of Berth	Max LOA	Depth Alongside (Year Surveyed)	Controlling Depth In Approaches
Pier 2	264m	264m	10.3m (2006)	16.6m
Pier 3	384m	370m	16.9m (2006)	16.6m
Pier 4	264m	250m	12.9m (2006)	16.6m
Pier 5	309.4m	280m	17.7m (2006)	17.0m
Pier 6	110m	116m	11.2m (2006)	7.6m
Pier 7	110m	110m	12.1m (2006)	7.6m
Pier 8	310m	280m	16.8m (2006)	17.0m
Pier 9	110m	145m	17.0m (2006)	11.1m
Pier 10	160m	145m	11.7m (2006)	10.0m

Source: HD/HY Codes C00113006, C00113106, F00113306, F00113406 & F00114206

3) Page 193 - INDEX

Substitute “**ACW-1 Buoy**” for “ACM-1 Buoy”

IV
REPRINT OF RADIO NAVIGATIONAL WARNINGS

Nil


V
REPRINT OF ADMIRALTY NOTICES TO MARINERS
FOR DUAL BADGED CHARTS

5742/06 * SINGAPORE - Jurong Island - Banyan Basin - Jetties. Berths. Dredged depths. Depths. Buoy.
 Source: Maritime and Port Authority of Singapore DBNM 81/06

Chart 4031 (previous update 4838/06) WGS84 DATUM

Insert the accompanying block, showing new jetties, berths, dredged depths and legend, centred on: 1° 14'·730N., 103° 41'·650E.

Depth 15_7 with seabed character, *R* (a) 1° 13'·318N., 103° 41'·600E.


Move  *Fl(2)10s Banyan* from: (a) above
 to, close NE of: (a) above

Delete Depth (15_7), close NW of: (a) above

Chart 4032 (previous update 5197/06) WGS84 DATUM

Insert the accompanying block, showing new jetties, berths, dredged depths and legend, centred on: 1° 14'·740N., 103° 41'·640E.


Depth 15_7 with seabed character, *R* (a) 1° 13'·318N., 103° 41'·600E.

Move  *Fl(2)10s Banyan* from: (a) above
 to, close NE of: (a) above

Delete depth (15_7), close NW of: (a) above

Chart 4039 (previous update 5195/06) WGS84 DATUM

Insert Depth 15_7 with seabed character, *R* (a) 1° 13'·32N., 103° 41'·60E.

Move  *Fl(2)10s Banyan* from: (a) above
 to, close NE of: (a) above

Delete Depth 18_3 , adjacent to: (a) above
 depth (16_1), close NW of: (a) above

Chart 4040 (previous update 5195/06) WGS84 DATUM

Insert the accompanying block, showing new jetties, berths, legend and amendments to buoyage and depths, centred on: 1° 14'·12N., 103° 41'·86E.

V
REPRINT OF ADMIRALTY NOTICES TO MARINERS
FOR DUAL BADGED CHARTS

5743/06 * SINGAPORE - Pasir Panjang Terminal -Depths. Dredged area. Dredged depths. Coastline. Berth.
 Source: Maritime and Port Authority of Singapore DBNM 82/06

Chart 4034 (previous update 5321/06) WGS84 DATUM


Insert the accompanying block, showing new dredged area and berth, and amendments to depths, dredged depths and coastline, centred on:

1° 16'·90N., 103° 46'·00E.

70/07 * SINGAPORE — Sinki Fairway Southwestwards — Buoy.
 Source: Maritime and Port Authority of Singapore

Chart 4030 (previous update 5194/06) WGS84 DATUM

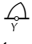
Move

 *Fl(4)Y.15s Rasu* from:
to:

1° 11'·734N., 103° 39'·538E.
1° 11'·796N., 103° 39'·549E.

Chart 4031 (previous update 5742/06) WGS84 DATUM


Move

 *Fl(4)Y.15s Rasu* from:
to:

1° 11'·734N., 103° 39'·538E.
1° 11'·796N., 103° 39'·549E.

Chart 4038 (previous update 5322/06) WGS84 DATUM


Move

 *Fl(4)Y.15s Rasu* from:
to:

1° 11'·73N., 103° 39'·54E.
1° 11'·80N., 103° 39'·55E.

Chart 4039 (previous update 5742/06) WGS84 DATUM

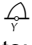
Move

 *Fl(4)Y.15s Rasu* from:
to:

1° 11'·73N., 103° 39'·54E.
1° 11'·80N., 103° 39'·55E.

Chart 4040 (previous update 5742/06) WGS84 DATUM

Move

 *Fl(4)Y.15s Rasu* from:
to:

1° 11'·73N., 103° 39'·54E.
1° 11'·80N., 103° 39'·55E.

V
REPRINT OF ADMIRALTY NOTICES TO MARINERS
FOR DUAL BADGED CHARTS

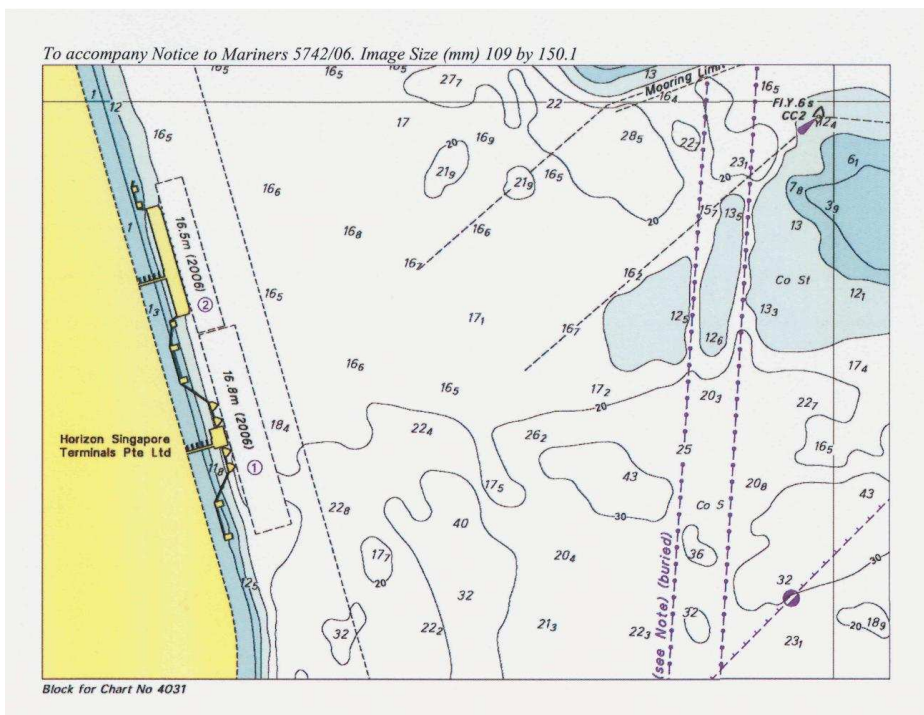
Delete	Maritime limit, pecked line, joining:	<p>1° 16'·63N., 103°56'·01E. (new maritime limit) (a) above and 1° 16'·63N., 103°56'· 52E. (limit of restricted area) 1° 16'·11N., 103°56'· 52E. (limit of anchorage area) and 1° 16'·63N., 103°57'·49E. (limit of restricted area) 1° 16'·11N., 103°57'·49E. (limit of anchorage area) and 1° 16'·48N., 103°56'·94E.</p>
	Legend, <i>R</i> , centred on:	

98/07 * MALAYSIA - Peninsular Malaysia, West Coast – Johor - Sungai Johor - Pulau Juling Eastwards - Bridge.
 Source: Captain Alexander Reid

4043 (previous update 4842/06) WGS84 DATUM

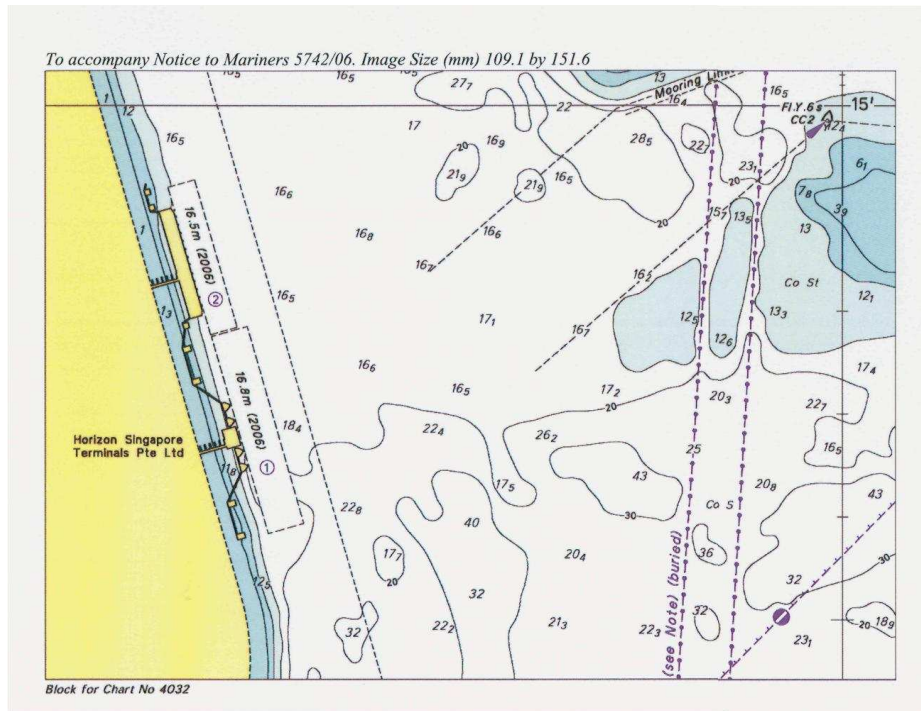
Insert	Legend, Bridge under construction (2006), centred on:	1° 31'·70 N, 104°01'·40E.
--------	---	---------------------------

Note: 5742/06* - Chart 4031 – accompanying block
 This block correction is for illustration only. The actual block correction should be obtained from the Admiralty Notices to Mariners.

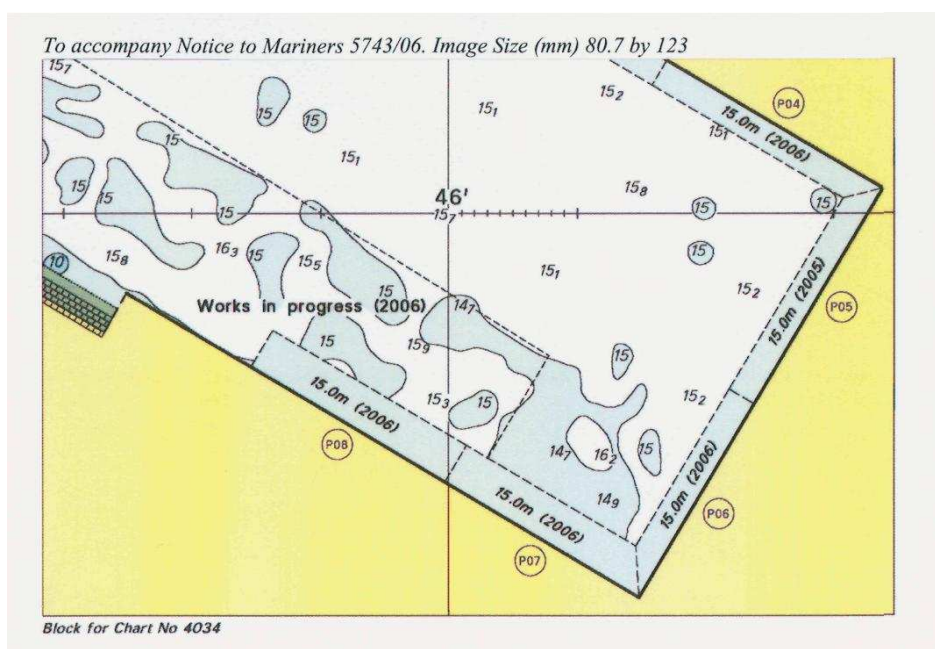


V
REPRINT OF ADMIRALTY NOTICES TO MARINERS
FOR DUAL BADGED CHARTS

Note: 5742/06* - Chart 4032 – accompanying block
 This block correction is for illustration only. The actual block correction should be obtained from the Admiralty Notices to Mariners.

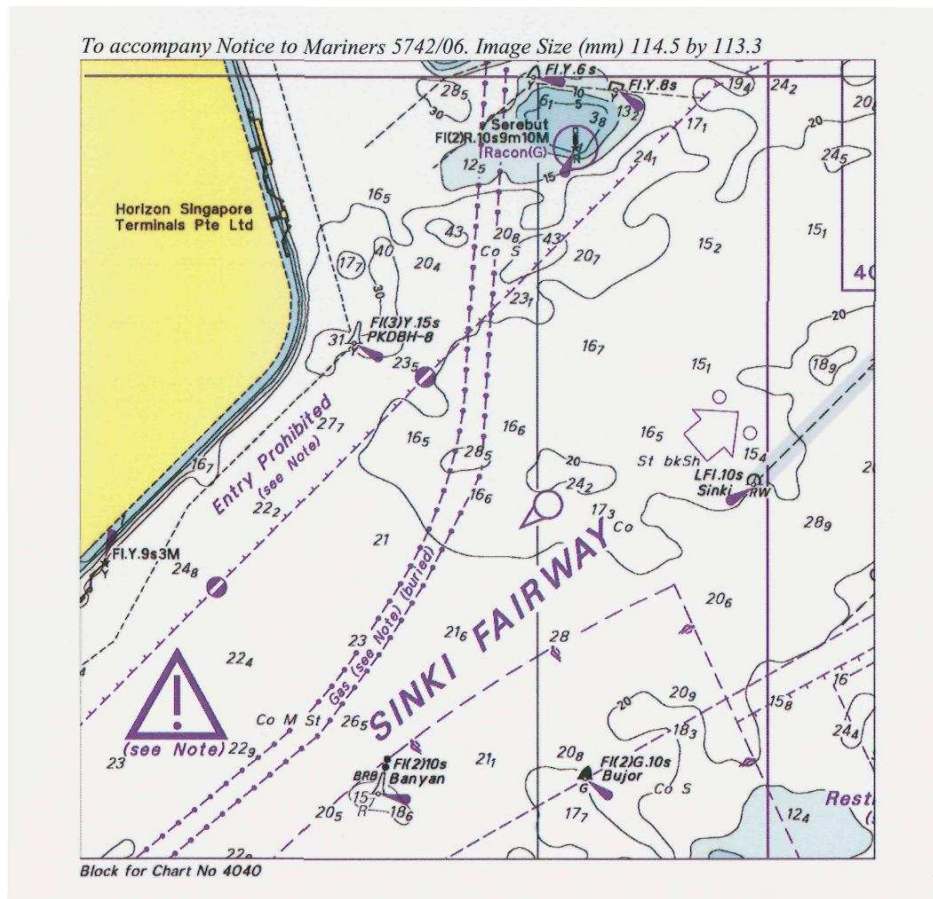


Note: 5743/06* - Chart 4034 – accompanying block
 This block correction is for illustration only. The actual block correction should be obtained from the Admiralty Notices to Mariners.



V
REPRINT OF ADMIRALTY NOTICES TO MARINERS
FOR DUAL BADGED CHARTS

Note: 5742/06* - Chart 4040 – accompanying block
 This block correction is for illustration only. The actual block correction should be obtained from the Admiralty Notices to Mariners



Updated to Admiralty Notices to Mariners Edition No. 2 of 2007 dated 11 January 2007

SINGAPORE ELECTRONIC NAVIGATIONAL CHARTS (ENC) DISTRIBUTORS
Please approach any of the appointed distributors to purchase the Singapore ENC.

PERSON TO CONTACT	ADDRESS	TELEPHONE/FAX NO./EMAIL/WEBSITE
Mr Chong Chee Meng General Manager	DPM (Singapore) Pte Ltd 1 Maritime Square, #09-72 Harbour Front Centre, Singapore 099253	Tel. No.: +65 6270 4060 Fax No.: +65 6276 3858 Email: sales@dpmsingapore.com.sg Website: http://www.dpmsingapore.com.sg
Ms Shirley Koh	Kelvin Hughes (S) Pte Ltd 8 Pandan Avenue #02-00, Singapore 609384	Tel. No.: +65 6545 9880 ext.12 Fax No.: +65 6545 8892 Email: shirley.koh@khsing.com Website: http://www.kelvinhughes.co.uk
Mr Philip Loh Sales Manager	Motion Smith 76 Shenton Way #01-01, Singapore 079119	Tel. No.: +65 6220 5098 Fax No.: +65 6225 4902 Email: sales@motsmith.com Website: http://www.motsmith.com
Mr Choy Kum Weng Director	Vector Services Pte Ltd 2 Maritime Square #04-12B SPI Building, Singapore 099255	Tel. No.: +65 6278 7212 Fax No.: +65 6278 7212 Email: kwchoy@pacific.net.sg
Mr Looi Keen Wai Regional Sales Manager	Transas Marine Pacific Pte Ltd 750C Chai Chee Road, Technopark@Chai Chee, #04-07 Singapore 469003	Tel. No.: +65 6443 3061 Fax No.: +65 6443 3025 Email: looi@transas.com.sg Website: www.transas.com.sg
Mr George Arts President	Marine Press of Canada 640 Rue St-Paul Ouest, Suite 300 Montreal (QC) Canada, H3C1L9	Tel. No.: (514) 866-8342 Fax No.: (514) 866-9050 Email: sales@marinepress.com Website: www.marinepress.com
Mr Thomas Wilde Superintendent	HanseNautic GmbH Bade & Hornig, Eckardt & Messtorff Herrengarten 31 D-20459 Hamburg, Germany	Tel. No.: +49 40 374 811-32 Fax No.: +49 40 366 400 Email: info@HanseNautic.com Website: http://www.HanseNautic.com
Ms Verena Borsos Manager	SevenCs AG + Co. KG Ruhrstrasse 90, D-22761 Hamburg, Germany	Tel. No.: +49 40 853 58 6940 Fax No.: +49 40 853 58 6949 Email: sales@chartworld.com Website: http://www.sevencs.com
Mr K. Shimizu ENC Manager	Japan Hydrographic Association ENC Service Division 5-3-3 Tsukiji, Chuo-ku Tokyo 104-0045, Japan	Tel. No.: +81 3 3543 0752 Fax No.: +81 3 3543 0695 Email: enc-support@jha.jp Website: http://www.jha.jp.com
Mr Jester-Kim Foreign Business Department Manager	E_MLX Co. Ltd Ssangyong Research No.2 Lab Sinseong-Dong 100 Yusong-Gu, Daejeon 305-804, Korea (ROK)	Tel. No.: +82 42 865 1893 Fax No.: +82 42 865 1884 Email: Jester-kim@emlx.co.kr
Mr C G Kim	Korean Ocean Development Co. Ltd 2ND Fl, Dongbang Bldg, 25-4, 4 Ga Jungang-Dong, Jung-Gu, Busan, South Korea	Tel. No.: +82 514 66 0760 Fax No.: +82 514 65 9345 Email: sales@chartkorea.com Website: http://chartkorea.com
Mr Kjell Nodland	C-Map Norway A/S P.O Box 212, N-4371 Egersund, Norway	Tel No.: +47 514 64 700 Fax No: +47 514 64 701 Email: market@c-map.no Website: http://www.c-map.no

Ms Marianne Barstad	PRIMAR STAVANGER Lervigsveien 36, P.O Box 60, N-4001 Stavanger, Norway	Tel. No.: +47 51 93 9500 Fax No.: +47 51 93 9501 Email: sales@primar.org Website: http://www.primar-stavanger.org
Mr Roar Moe International Marketing Coordinator	Maritime Information System AS (MARIS) Danholmen 25, No.3115 Tonsberg, Norway	Tel. No.: +47 33 30 42 50 Fax No.: +47 33 30 42 51 Email: roar.moe@maris.no Website: http://www.maris.no
Mr Andy Criddle Regional Sales Manager	United Kingdom Hydrographic Office Admiralty Way, Taunton, Somerset TA1 2DN United Kingdom	Tel. No.: +44 (0)1823 337900 Fax No.: +44 (0)1823 284077 Email: vargroup@ukho.gov.uk & andrew.criddle@ukho.gov.uk Website: www.ukho.gov.uk

CHART AGENT FOR MARITIME AND PORT AUTHORITY OF SINGAPORE (MPA) PUBLICATIONS

Agent's name : Motion Smith
Address : 76 Shenton Way # 01-01
Singapore 079119
Telephone : (65) 6220 5098
: (After Office hours: Pager No. 9304 4156, 9304 4159)
Fax No. : (65) 6225 4902
E-mail : sales@motsmith.com
Website : <http://www.motsmith.com>

HYDROGRAPHIC NOTE - Instructions

1. Mariners are requested to notify the Chief Hydrographer, Maritime and Port Authority of Singapore, when new or suspected dangers to navigation are discovered, changes are observed in aids to navigation or where corrections to nautical publications may be necessary. Reports, which cannot be confirmed or are lacking in certain details should not be withheld.
2. Any ambiguities of time, positioning and depth should be stressed and any firm expectation of being able to check the information provided on a following voyage should be mentioned.
3. Mariners using satellite position fixing systems, eg. GPS, should provide details of equipment and datum used (where applicable). Where bearings (true or magnetic) are taken visually or by radar to fix a position, it should include more than two objects in order to provide a check on its accuracy. A position may also be defined by bearing and distance from a conspicuous object eg. beacon, lighthouse etc.
4. The note should include a tracing or a digital image of the chart used and the details should be clearly marked.
5. Echo sounders frequently register greater depths than the advertised maximum depth for the equipment, eg. a trace appearing at 50 metres may be in fact be 550 metres or even 1050 metres for equipment whose maximum depth is 500 metres. Erroneous depths caused by 2nd transmission error can usually be recognised by the following:
 - (a) the tracing being weaker than normal for the depth registered,
 - (b) the trace appearing to pass through the transmission line,
 - (c) the feathery nature of the trace.
6. An acknowledgement of receipt will be sent. When a Notice to Mariners is issued, the sender's vessel or name is quoted as the source unless the same information is also received in foreign Notices to Mariners.
7. Reports of shoals, uncharted dangers and defects in aids to navigation may also be made to the appropriate Singapore Port Operations Control Station on VHF Channels 10, 12, 14, 68 or 73.

HYDROGRAPHIC NOTE

To:

Chief Hydrographer
Hydrographic Department
Maritime and Port Authority of Singapore
460 Alexandra Road #20-00 PSA Building
Singapore 119963

Tel : (65) 6375 1227
Fax : (65) 6278 7646
Email : hydrographic@mpa.gov.sg

Sender's Contact Details :

Date :

Name of Vessel :

Address of Sender :

Tel : Fax :

Email :

Nature of Observation :

General Location :

Subject :

Position : Lat. Long.

Charts Used :

Date & Time of Observation :

Details :

.....

.....

.....

Attachment :

Equipment Used :

Type of Position Fixing : GPS / DGPS Others :

Type of Echo Sounder :

Name and Signature :

Ship's / Company's tamp :