

## SINGAPOREAN NOTICES TO MARINERS

---

SECTION	CONTENT	Page
I	Index of Charts & Publications	25
II	New Publications	28
	Notices to Mariners and Chart Corrections	31
	Temporary and Preliminary Notices	33
III	Navigational Information	34
	Amendments to Publications	37
IV	Reprint of Radio Navigational Warnings	39
V	Reprint of Admiralty Notices to Mariners for Dual Badged Charts	40

---

The monthly Notices to Mariners contain corrective information affecting charts published by the Hydrographic Department, Maritime and Port Authority of Singapore. The information contained in these Notices should be updated on the charts affected. Notices under Section II apply only to the particular Singaporean Chart(s) indicated.

---

Mariners are requested to notify the Chief Hydrographer, Maritime and Port Authority of Singapore, immediately on the discovery of new dangers or suspected dangers to navigation and of changes or defects in aids to navigation. See Hydrographic Note on back page.

The monthly Singaporean Notices to Mariners can be accessed directly from the MPA website:

<http://www.mpa.gov.sg/> > Circulars & Notices > Singaporean NTM

or

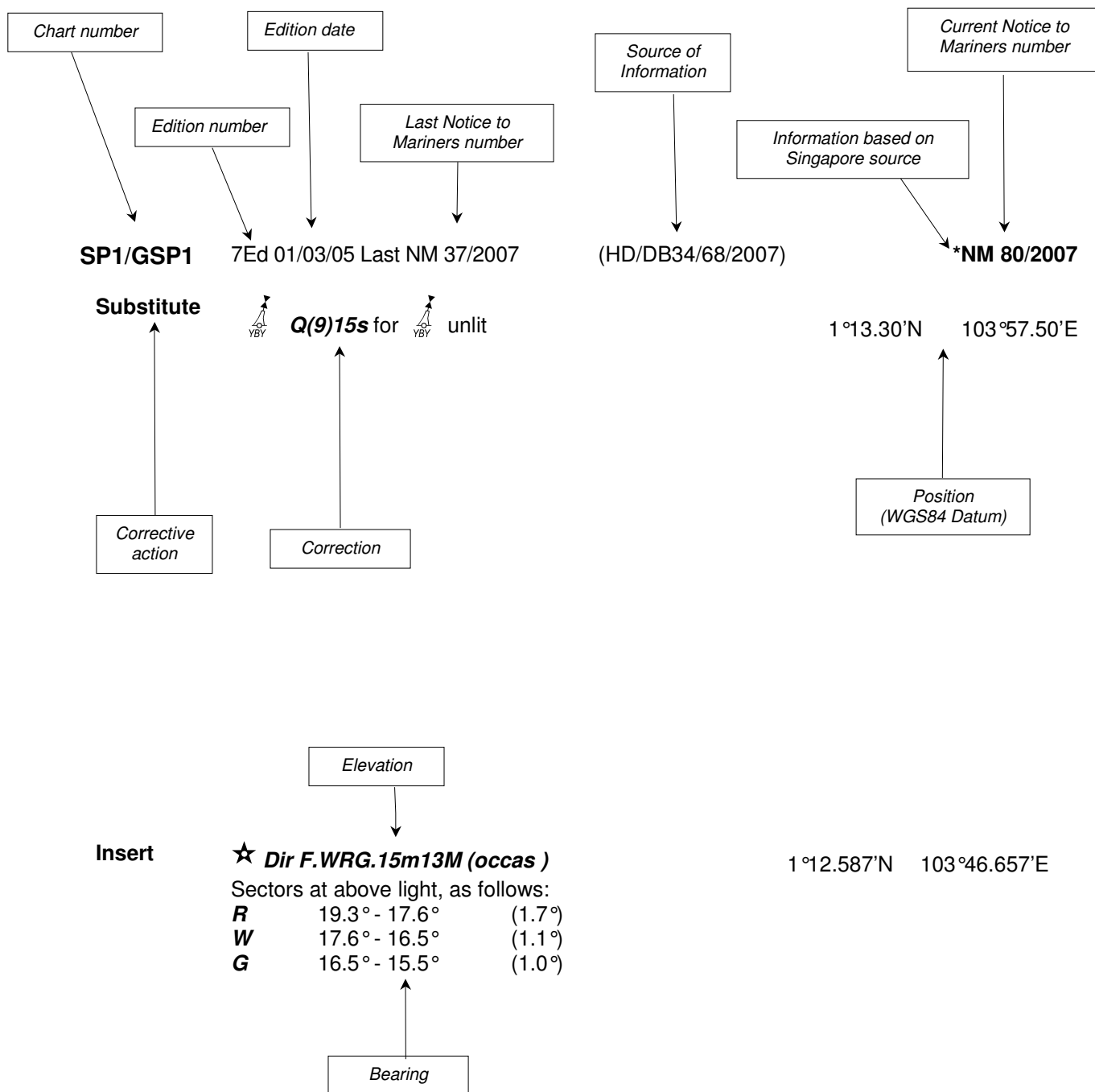
<http://www.mpa.gov.sg/infocentre/publications/noticesmari.htm>

This service is offered free of charge.

Hydrographic Department  
Maritime and Port Authority of Singapore  
460 Alexandra Road  
PSA Building #20-00  
Singapore 119963  
Tel: (65) 6375 1227  
Fax: (65) 6278 7646

## EXPLANATION OF FORMAT

The elements of a typical chart correction are explained below.



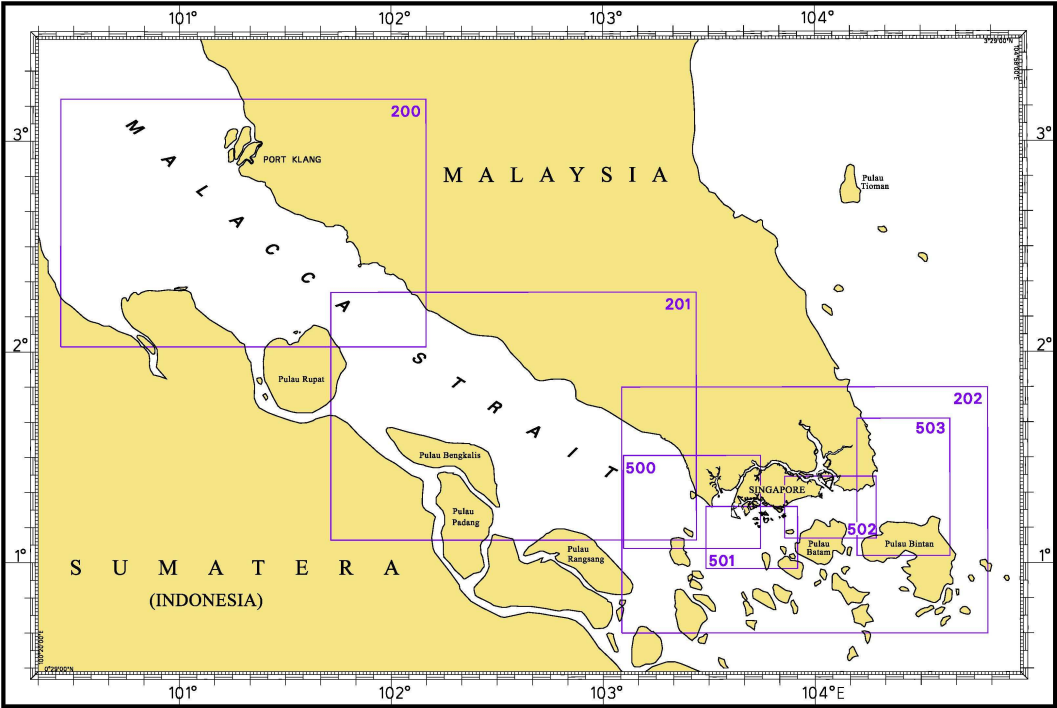
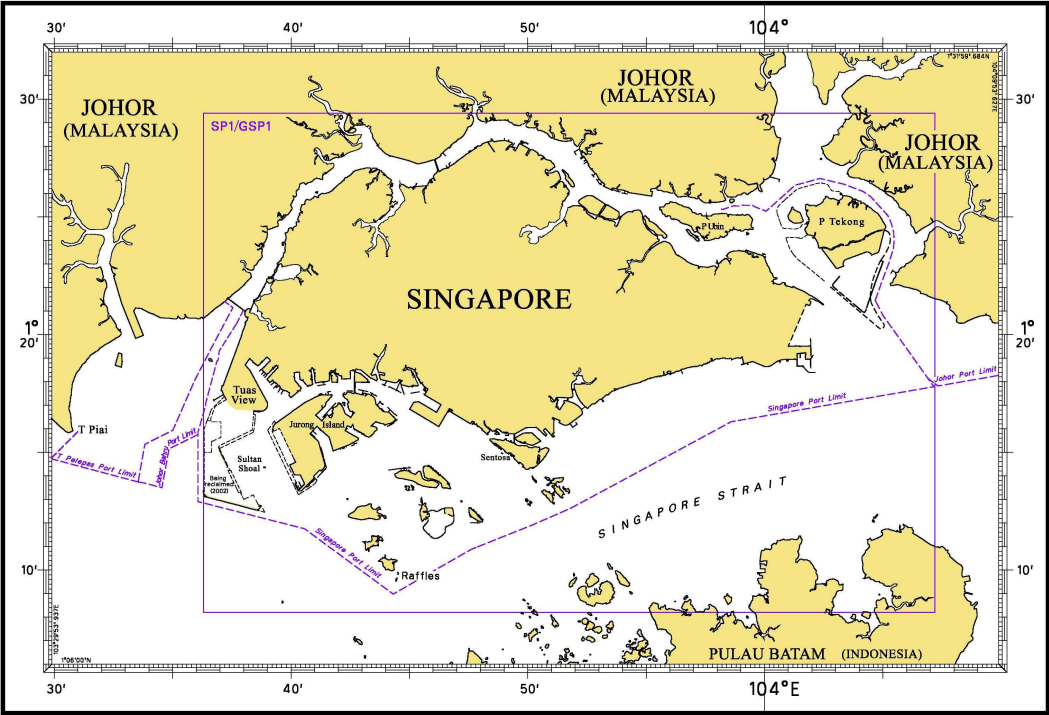
**Notes:**

- a) Notice to Mariners number followed by:
  - T** indicates a Temporary Notice (eg. \***NM 80T/2007**).
  - P** indicates a Preliminary Notice (eg. \***NM 80P/2007**).
- b) Bearings are referred to True Compass in degrees clockwise from 000° to 359°. Bearings related to lights are from seaward.
- c) Heights and elevations are above Mean High Water Springs.

## INDEX OF CHARTS AND PUBLICATIONS

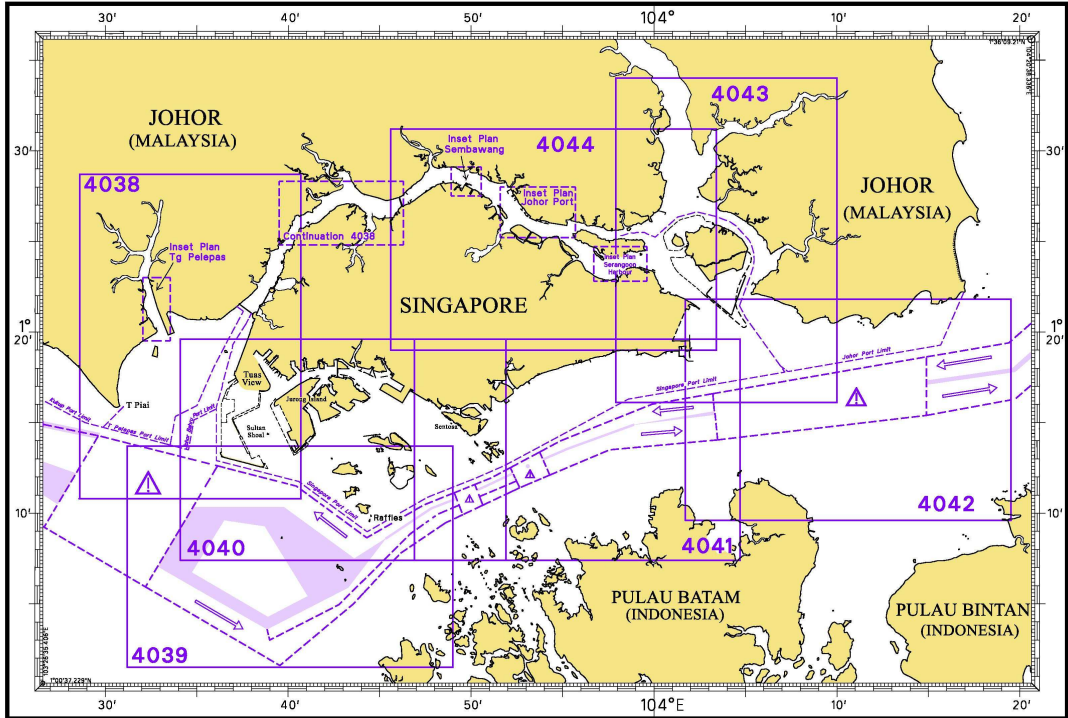
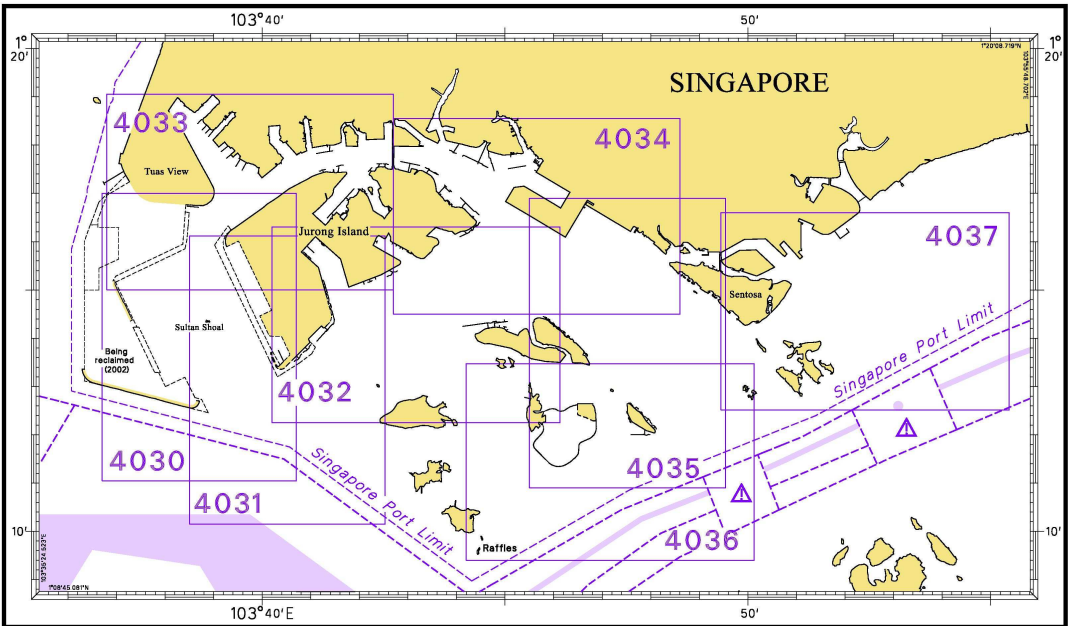
NOTICES	DESCRIPTION	PAGE	NOTICES	DESCRIPTION	PAGE
	Index of Singaporean Charts	26	*36	Updating of Publication "SINGAPORE PORT INFORMATION 2008/2009 EDITION"	37
	Index of Dual Badged Charts	27			
	New Publication "SINGAPORE PORT INFORMATION - EDITION 2008/2009"	28	*37	Updating of Publication "SINGAPORE TIDE TABLES YEAR 2008"	38
	New Edition Singaporean Charts	29		Singapore Electronic Navigational Charts (ENC) Distributors	48
	New Edition Dual Badged Charts	30			
*27	SP1/GSP1	31			
*28	SP1/GSP1	31			
*29	SP1/GSP1	31			
*30	SP1/GSP1	31			
	500	31			
	501	32			
*31	SP1/GSP1	31			
	500	31			
	501	32			
32	201	31			
*33	Port Marine Notices	34			
*34P	Dredging from the Singapore Port Limit and the West Bound Lane of the TSS in the Singapore Strait	34			
*35	Singaporean Print On Demand (POD) Charts	36			

I  
**INDEX OF CHARTS AND PUBLICATIONS**  
INDEX OF SINGAPOREAN CHARTS

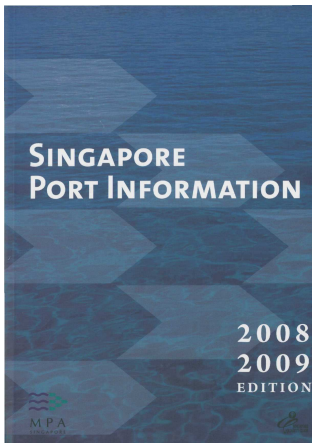


Notes:  
Updated SINGAPOREAN Charts (excluding Charts SP1/GSP1 and 503) are available through our Print On Demand (POD). For more information, refer to Section III – Navigational Information and these charts can be purchased from our authorised Chart Agents:  
DPM (Singapore) Pte Ltd, E.W. Liner Charts & Publications Pte Ltd and Motion Smith.

I  
**INDEX OF CHARTS AND PUBLICATIONS**  
INDEX OF DUAL BADGED CHARTS



## II NEW PUBLICATIONS



### **NEW EDITION SINGAPORE PORT INFORMATION EDITION 2008/2009 PUBLISHED ON JANUARY 2008.**

#### **Summary of Publication**

The publication contains quality colour chartlets, showing important maritime information in the Singapore Port Waters as well as the Malacca and Singapore Straits. The publication is a compendium of essential maritime information including operational information and regulations such as: -

- Guide to VHF Communication
- Pilotage Guidelines and Procedures
- Port Clearances and Reporting
- Port facilities and guides to major port entry
- IMO adopted separation schemes, the routing system in the Straits of Malacca and Singapore

In addition, this publication also provides the following: -

- Characteristics of all the aids to navigation along the Singapore Strait and Singapore Port Waters.
- Catalogue of Nautical Charts  
A comprehensive reference in graphical and textual form for all Singaporean and Dual Badged Charts. This catalogue gives full details for each chart and its publication date. Details of chart agents and appointed Singapore Electronic Charts (ENC) distributors are also included.

#### **To Whom Will It Be Useful?**

Mariners, shipping community, port users and other interested users.

#### **Frequency / Year of Publication**

Once every 2 years.

#### **Cost of Publication**

To be advised by Chart Agents.

#### **Order Enquiries:**

This publication would be available from the following Chart Agents:

- 1) DPM (Singapore) Pte Ltd
  - 2) E.W. Liner Charts & Publications Pte Ltd
  - 3) Motion Smith
- (Please refer to Page 49 for details.)
-

## II NEW PUBLICATIONS

### NEW EDITION SINGAPOREAN CHARTS PUBLISHED ON 31 JANUARY 2008

<b>Chart No.</b>	:	SP1
<b>Title</b>	:	Anchorage and Aids to Navigation
<b>Coverage</b>	:	Lat 1° 08' 20" N 2° 29' 40" N Long 103° 35' 70" E 104° 07' 20" E
<b>Scale</b>	:	1: 60 000
<b>Date Published</b>	:	31 January 2008
<b>Size of chart</b>	:	973.9 x 651.2 mm
<b>Remarks</b>	:	This new edition includes: - <ul style="list-style-type: none"> <li>• Revised limits of West Keppel Fairway, Jong Fairway, Western Petroleum A, Western Petroleum B, Western Holding and Western Anchorages.</li> <li>• New reclamation profile at Pulau Tekong and Jurong Island.</li> <li>• New reclaimed land at Pulau Busing to Pulau Bukom Kechil.</li> <li>• Universal and Helios Terminals.</li> <li>• Submarine cables Tanah Merah (Singapore) to Chennai (India).</li> <li>• Updated entry prohibited area at Pulau Sebarok and Pulau Busing.</li> <li>• Chek Jawa Wetlands at east of Pulau Ubin.</li> </ul>

This new edition supersedes the earlier edition published on 19 July 2007.

<b>Chart No.</b>	:	GSP1
<b>Title</b>	:	Anchorage and Aids to Navigation (with area reference)
<b>Coverage</b>	:	Lat 1° 08' 20" N 2° 29' 40" N Long 103° 35' 70" E 104° 07' 20" E
<b>Scale</b>	:	1: 60 000
<b>Date Published</b>	:	31 January 2008
<b>Size of chart</b>	:	973.9 x 651.2 mm
<b>Remarks</b>	:	This new edition includes: - <ul style="list-style-type: none"> <li>• Revised limits of West Keppel Fairway, Jong Fairway, Western Petroleum A, Western Petroleum B, Western Holding and Western Anchorages.</li> <li>• New reclamation profile at Pulau Tekong and Jurong Island.</li> <li>• New reclaimed land at Pulau Busing to Pulau Bukom Kechil.</li> <li>• Universal and Helios Terminals.</li> <li>• Submarine cables Tanah Merah (Singapore) to Chennai (India).</li> <li>• Updated entry prohibited area at Pulau Sebarok and Pulau Busing.</li> <li>• Chek Jawa Wetlands at east of Pulau Ubin.</li> </ul>

This new edition supersedes the earlier edition published on 19 July 2007.

## II NEW PUBLICATIONS

### NEW EDITION DUAL BADGED CHARTS PUBLISHED ON JANUARY 2008

**Chart No** : 4034  
**Title** : Port of Singapore – East Jurong Channel, Pasir Panjang Terminal and West Keppel Fairway  
**Coverage** Lat 1° 14·50' N 1° 18·55' N  
 Long 103° 42·70' E 103° 48·60' E  
**Scale** : 1: 10 000  
**Date Published** : 31 January 2008  
**Size of chart** : 1094.3 x 746.3 mm  
**Remarks** : This new edition includes:
 

- Revised limits of West Keppel and Jong Fairway.
- Revised limits of Western Petroleum A, Western Petroleum B, Western Holding and Western Anchorages.
- Updates to Jurong Terminal Berth J12 and Pulau Damar Laut Berth J25.







The existing chart of the same number published on 5 July 2007 is superseded.

**Chart No** : 4035  
**Title** : Port of Singapore – Western Anchorage, Jong Fairway and Cruise Bay  
**Coverage** Lat 1° 10·90' N 1° 16·90' N  
 Long 103° 45·50' E 103° 49·54' E  
**Scale** : 1: 10 000  
**Date Published** : 31 January 2008  
**Size of chart** : 749.4 x 1105.7 mm  
**Remarks** : This new edition includes:
 

- Revised limits of West Keppel and Jong Fairway.
- Revised limits of Western Petroleum A, Western Petroleum B, Western Holding and Western Anchorages.
- Deletion of Front and Rear Beacons including the leading line at Pulau Bukom.
- Updates to depths around Shell SBM.

The existing chart of the same number published on 5 July 2007 is superseded.

**II**  
**NOTICES TO MARINERS AND CHART CORRECTIONS**

<b>SP1/GSP1</b>	3Ed 31/01/08	(HE025/095/2007 & HE025/096/2007)	<b>*NM 27/2008</b>
<b>Insert</b>	 <i>Fl.Y.4s</i>		1°13-94'N 103°41.13'E
	 <i>Fl.Y.6s</i>		1°14-35'N 103°41.49'E
		(HE025/138/2007)	<b>*NM 28/2008</b>
<b>Substitute</b>	<i>H4</i> for East Cyrene		1°15-61'N 103°45.89'E
		(HE025/139/2007)	<b>*NM 29/2008</b>
<b>Substitute</b>	<i>H5</i> for Butir		1°14-64'N 103°43-83'E
		(HD/HE025/001/2008)	<b>*NM 30/2008</b>
<b>Insert</b>	 <i>He-Ent, Fl(2)G.4s6m5M</i>		1°13-70'N 103°40-19'E
		(HD/HE025/003/2008)	<b>*NM 31/2008</b>
<b>Insert</b>	 <i>Fl(2)Y.4s, Helios 1</i>		1°14-01'N 103°40-18'E
<hr/>			
<b>201</b>	3Ed 05/10/07 Last NM 11/2008	(Indonesian DGSC No. 229/2007)	<b>NM 32/2008</b>
<b>Substitute</b>	<i>Q.11M</i> for Fl.16m11M		1°41-49'N 101°47-04'E
<hr/>			
<b>500</b>	5Ed 30/08/07 Last NM 14/2008	(HD/HE025/001/2008)	<b>*NM 30/2008</b>
<b>Insert</b>	 <i>He-Ent, Fl(2)G.4s6m5M</i>		1°13-70'N 103°40-19'E
		(HD/HE025/003/2008)	<b>*NM 31/2008</b>
<b>Insert</b>	 <i>Fl(2)Y.4s, Helios 1</i>		1°14-01'N 103°40-18'E
<hr/>			

## II

## NOTICES TO MARINERS AND CHART CORRECTIONS

501

4Ed 21/09/06 Last NM 15/2008 (HD/HE025/001/2008)

\*NM 30/2008

Insert

*He-Ent, Fl(2)G.4s6m5M*

1°13.70'N

103°40.19'E

(HD/HE025/003/2008)

\*NM 31/2008

Insert

*Fl(2)Y.4s, Helios 1*

1°14.01'N

103°40.18'E

**II**  
**TEMPORARY AND PRELIMINARY NOTICES**

Nil

### III NAVIGATIONAL INFORMATION

#### \*(NM 33/2008) PORT MARINE NOTICES

These notices can be accessed directly from MPA website:

[http://www.mpa.gov.sg/circulars\\_and\\_notices/portmarine\\_notices/pm\\_notices.htm](http://www.mpa.gov.sg/circulars_and_notices/portmarine_notices/pm_notices.htm)

PMN No.	Subject
200/2007	Reclamation of Jurong Island Phase 4.
003/2008	Reclamation work at Tuas View Extension. (Revision of PMN No. 186 of 2007)
009/2008	Reclamation at Pasir Panjang Terminal and Pasir Panjang Wharves. (Revision of PMN No. 187 of 2007)
010/2008	Marine jetty construction works at Sakra Basin, Jurong Island.
011/2008	Temporary staging ground at Sentosa. (Revision of PMN No. 89 of 2007)

#### \*(NM 34P/2008) DREDGING FROM THE SINGAPORE PORT LIMIT AND THE WEST BOUND LANE OF THE TRAFFIC SEPARATION SCHEME IN THE SINGAPORE STRAIT

##### Purpose

Mariners navigating in the Singapore Strait are hereby informed that dredging operations will be carried out from the Singapore Port Limit and the westbound lane of the Traffic Separation Scheme.

##### Date

With effect from 17 Dec 2007 until 17 Dec 2011 (48 months).

##### Duration

Day light operation including Sunday and Public Holidays.

##### Working Area

Within an area bounded by the following coordinates from Singapore Port Limit and the area within the westbound lane of the Traffic Separation Scheme (please see chart attached):

WGS 84 Datum		
Points	Lat. (N)	Long. (E)
1	1°15.827'	103°57.737'
2	1°14.865'	103°58.134'
3	1°13.298'	103°54.401'
4	1°13.884'	103°54.131'

##### Vessels

Vessels involved in the operations will display the appropriate day and night signals and will stand by on VHF Ch 14 and 12 and shall follow any traffic information given by Vessel Traffic Service of Singapore (VTIS).

##### Navigational Broadcast

Navigational warning broadcast will be promulgated by (VTIS) on VHF CH 09 and NAVTEX to inform vessels of the dredging operation. Mariners are to maintain a listening watch for the above safety information.

### III NAVIGATIONAL INFORMATION

#### Caution

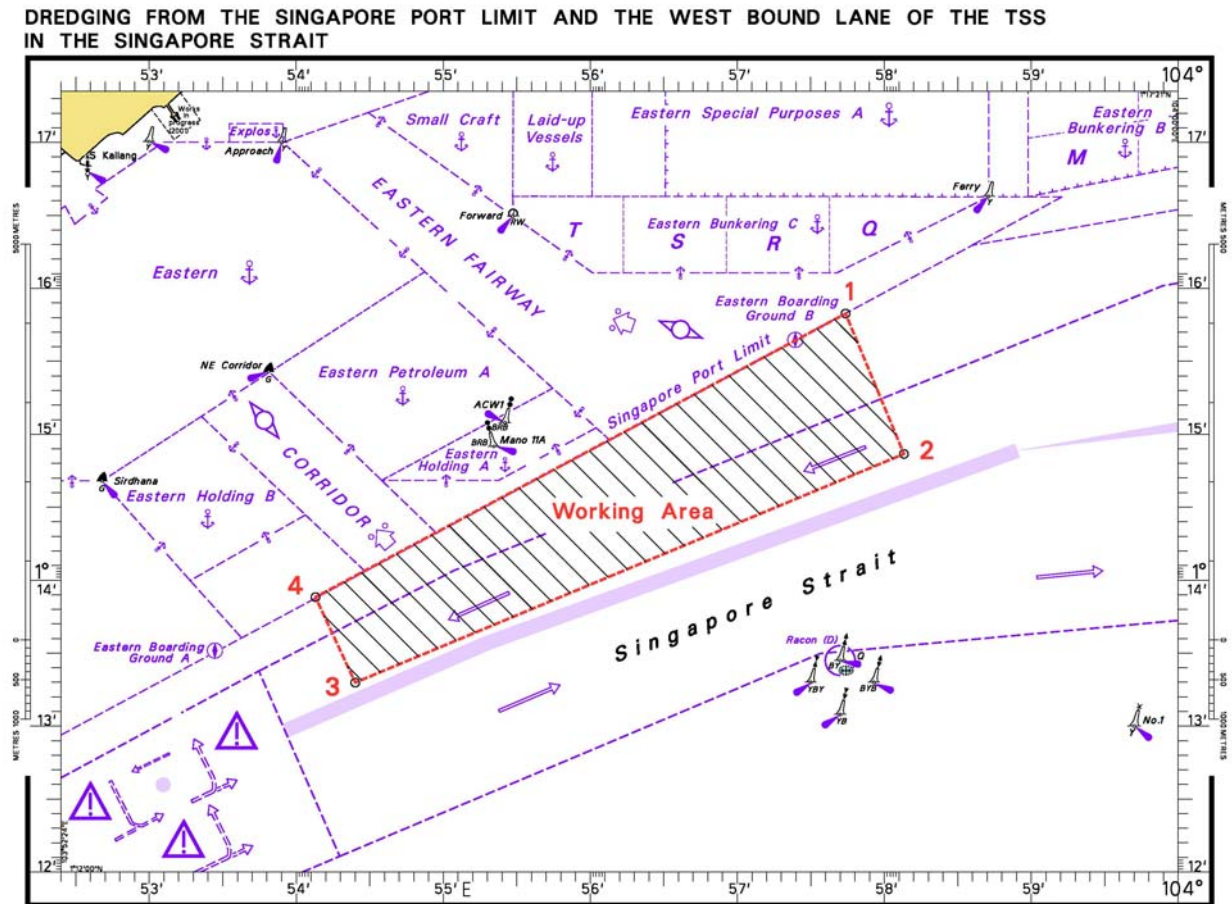
Mariners are advised to:

- Navigate with caution and proceed at a safe speed when approaching the area; and
- Keep well clear of the working vessels.

Charts affected: SP1/GSP1, 202, 501, 502, 4037 & 4041

Source: HD/DB67/004/2008

(Previous Notice No. 119P/2007 is superseded)



### III NAVIGATIONAL INFORMATION

\*(NM 35/2008) **SINGAPOREAN PRINT ON DEMAND (POD) CHARTS**

**Print On Demand (POD)** Charts are the most up-to-date paper nautical charts printed for navigational use. These nautical charts are produced in accordance with the International Hydrographic Organisation (IHO) charting specifications. These official nautical charts are continually updated to the latest Notices to Mariners before they are printed and sold to users.

**BENEFITS TO OUR CUSTOMERS**

**Convenience**

Customers need not make numerous hand corrections to the nautical charts before use. In addition the updated POD Charts are more accurate and reliable than offset printed charts with hand corrections.

**Clarity**

Clarity in the presentation of updated information as compared to lithographic printed charts, where in some cases there are several overlapping corrections over existing information.

**Coverage**

The POD Charts cover the Malacca and Singapore Straits, from One Fathom Bank to Horsburgh Lighthouse.

---

**III**  
**AMENDMENTS TO PUBLICATIONS**

**\*(NM 36/2008) UPDATING OF PUBLICATION "SINGAPORE PORT INFORMATION 2008/2009 EDITION"**

1 Page 176

**MPA APPOINTED ELECTRONIC NAVIGATIONAL CHART (ENC) DISTRIBUTORS**

Amend the following:

<b>CONTACT PERSON/ DESIGNATION</b>	<b>ADDRESS</b>	<b>TELEPHONE/FAX NO./EMAIL/WEBSITE</b>
Mr Keiji Shimizu ENC Manager	Japan Hydrographic Association Electronic Charts Division Daiichi Sogo Bldg, 6F 1-6-6, Hanedakuko, Ota-ku Tokyo 144-0041 Japan	Tel. No.: +81 3 5708 7093 Fax No.: +81 3 5708 7094 Email: <a href="mailto:enc-support@jha.jp">enc-support@jha.jp</a> Website: <a href="http://www.jha.jp">http://www.jha.jp</a>

Source: HD/DB067/002/2008

2 Page 108

**TEMASEK FAIRWAY**

Insert the following:

Name of Beacon / Buoy	Position Lat. N Long. E Deg Min	Structure Colour & Shape	Light Characteristic	Owner
<i>He-Ent</i>	<i>01 13-699 103 40-186</i>	<i>Green conical on green tubular tower, 3m</i>	<i>Fl(2)G.4s6m5M</i>	<i>Helios terminal Corporation</i>
<i>Helios 1</i>	<i>01 14-009 103 40-180</i>	<i>Yellow Pillar</i>	<i>Fl(2)Y.4s</i>	<i>Helios terminal Corporation</i>

Source: HD/HE025/001/2008 & HD/HE025/002/2008

3 Page 112

**EAST JURONG CHANNEL (Cont/)**

Amend the following:

Name of Beacon / Buoy		Position Lat. N Long. E Deg Min
Delete	<i>Insert</i>	01 15-611 103 45-885
East Cyrene	<i>H4</i>	

Source: HD/HE025/138/2007

**III**  
**AMENDMENTS TO PUBLICATIONS**

4 Page 115

**SINKI FAIRWAY (Cont/)**

Amend the following:

Name of Beacon / Buoy		Position Lat. N Long. E Deg Min
Delete	<i>Insert</i>	01 14-636
Butir	<i>H5</i>	103 43-828

Source: HD/HE025/139/2007

**\*(NM 37/2008) UPDATING OF PUBLICATION "SINGAPORE TIDE TABLES YEAR 2008"**1 Page 18 – **TANJONG PAGAR, OCTOBER**

Amend the following:

	TIME	METRE	
		Delete	<i>Insert</i>
19 SU	1315	30	<b>3.0</b>

2 Page 20 – **SEMBAWANG, JUNE**

Amend the following:

	TIME	METRE	
		Delete	<i>Insert</i>
14 SA	0152	10	<b>1.0</b>

3 Page 21 – **SEMBAWANG, AUGUST**

Amend the following:

	TIME	METRE	
		Delete	<i>Insert</i>
4 M	1352	30	<b>3.0</b>
8 F	0903	10	<b>1.0</b>
21 TH	1420	30	<b>3.0</b>

**IV**  
**REPRINT OF RADIO NAVIGATIONAL WARNINGS**

Nil

V  
**REPRINT OF ADMIRALTY NOTICES TO MARINERS  
 FOR DUAL BADGED CHARTS**

These notices can be accessed directly from UKHO Website:

<http://www.ukho.gov.uk/amd/weeklyNms.asp>

**5785 SINGAPORE - East Jurong Channel - Damar Laut Basin and Pasir Panjang Terminal - Coastline. Depths. Dredged area. Dredged depths. Berth.**

Source: Maritime and Port Authority of Singapore

**Chart 4034** [ *previous update 4521/07* ] WGS84 DATUM

Insert	the accompanying block, showing amendments to coastline, depths, dredged area and dredged depths, centred on: depth 14 <sub>7</sub> enclosed by 15m contour limit of dredged area, pecked line, joining:	1° 18′.35N., 103° 42′.99E. (a) 1° 17′.594N., 103° 44′.246E. 1° 17′.061N., 103° 45′.544E. (b) 1° 17′.088N., 103° 45′.560E. 1° 16′.999N., 103° 45′.712E. (existing limit) (c) 1° 17′.031N., 103° 45′.623E. 1° 17′.008N., 103° 45′.589E.
	legend, 15.0m (2007), orientated NW/SE, centred on: berth number, P10	
Substitute	depth 14 enclosed by 15m contour for depth 14 <sub>4</sub> enclosed by 15m contour depth 15 <sub>7</sub> for depth 15 <sub>9</sub> depth 15 <sub>6</sub> for depth 15 <sub>9</sub> depth 14 <sub>9</sub> enclosed by 15m contour for depth 15 enclosed by 15m contour	1° 17′.722N., 103° 44′.070E. 1° 17′.427N., 103° 44′.264E. 1° 17′.291N., 103° 44′.394E.  1° 16′.719N., 103° 44′.868E.
Delete	depth 15 <sub>5</sub> , close SW of: depth 15 <sub>2</sub> , close SE of: depth 14 <sub>5</sub> , close SE of: 15m contour, joining:	(a) above (b) above (c) above 1° 17′.065N., 103° 45′.547E. 1° 17′.071N., 103° 45′.590E.

Updated to Admiralty Notices to Mariners Edition No. 52 of 2008 dated 27 December 2007.

**37\* SINGAPORE STRAIT - Bedok Southwards - Legends.**

Source: UK Hydrographic Office

**Chart 4037** [ *previous update 4596/07* ] WGS84 DATUM

Insert	legend, <i>Dredging works in progress</i> (see NM 36(T)/08), centred on:	1° 13′.880N., 103° 54′.780E.
--------	--	------------------------------

**Chart 4041** [ *previous update 5744/07* ] WGS84 DATUM

Insert	legend, <i>Dredging works in progress</i> (see NM 36(T)/08), centred on:	1° 14′.50N., 103° 56′.00E.
--------	--	----------------------------

**V**  
**REPRINT OF ADMIRALTY NOTICES TO MARINERS**  
**FOR DUAL BADGED CHARTS**

**209\* SINGAPORE - Sinki Fairway - Banyan Basin - Sakra Basin - Jetties. Dredged areas. Berths. Depths. Coastline. Fairway.**

Source: Maritime and Port Authority of Singapore

Note: Chart 4032 is to be deleted from the list of charts affected by Notice 5559(P)/07.

**Chart 4031** [ *previous update 4600/07* ] WGS84 DATUM

Insert the accompanying block, showing new jetties, dredged areas, berths and amendments to depths and coastline, centred on: 1° 14'·180N., 103° 41'·330E.

**Chart 4032** [ *previous update 4855/07* ] WGS84 DATUM

Insert the accompanying block A, showing amendments to depths and coastline, centred on: 1° 15'·850N., 103° 42'·760E.

the accompanying block B, showing new jetties, dredged areas, berths and amendments to depths and coastline, centred on: 1° 14'·180N., 103° 41'·360E.  
 limit of fairway, pecked line, joining: (a) 1° 15'·391N., 103° 45'·677E. (existing limit)  
 1° 15'·692N., 103° 46'·130E. (E Border)  
 and  
 (b) 1° 14'·521N., 103° 45'·809E. (existing limit)  
 1° 14'·478N., 103° 46'·130E. (E border)

Delete former limit of fairway, pecked line, joining: (a) above 1° 15'·493N., 103° 46'·130E. (E border)  
 and  
 (b) above 1° 14'·646N., 103° 46'·130E. (E border)

**Chart 4034** [ *previous update 5785/07* ] WGS84 DATUM

Insert the accompanying block, showing amendments to depths, centred on: 1° 15'·770N., 103° 42'·960E.

**Chart 4040** [ *previous update 5747/07* ] WGS84 DATUM

Insert the accompanying block, showing new jetties, and amendments to depths and coastline, centred on: 1° 14'·20N., 103° 41'·40E.

**V**  
**REPRINT OF ADMIRALTY NOTICES TO MARINERS**  
**FOR DUAL BADGED CHARTS**

**210\* SINGAPORE - Johor Strait - Eastern Part - Bethlehem Shipyard and Pulau Punggol Timor - Depths. Jetty. Pontoon.**

Source: Maritime and Port Authority of Singapore

**Chart 4044** [ *previous update 5743/07* ] WGS84 DATUM

Insert	depth 12 <sub>s</sub> depth 5 enclosed by 5m contour	1° 25′.42N., 103° 53′.62E. 1° 28′.05N., 103° 49′.39E.
Substitute	depth 8 <sub>2</sub> enclosed by 10m contour for depth 8 <sub>5</sub> enclosed by 10m contour	1° 25′.60N., 103° 53′.41E.
Delete	jetty, double firm line, joining:	1° 27′.99N., 103° 49′.33E. (shore) 1° 28′.12N., 103° 49′.44E.

**Chart 4044 (plan C, Sembawang)** [ *previous update 5743/07* ] WGS84 DATUM

Insert	depth 5 enclosed by 5m contour	1° 28′.049N., 103° 49′.385E.
Delete	jetty and pontoon, double firm line, and associated legend, Pontoon, joining:	1° 27′.988N., 103° 49′.330E. (shore) 1° 28′.121N., 103° 49′.433E.

**Chart 4044 (plan B, Pelabuhan Johor (Johor Port))** [ *previous update 5743/07* ] WGS84 DATUM

Substitute	depth 8 <sub>2</sub> for depth 8 <sub>5</sub> depth 12 <sub>g</sub> for depth 15 <sub>g</sub> and associated 15m contour	1° 25′.60N., 103° 53′.41E. 1° 25′.42N., 103° 53′.63E.
------------	---	--

**556 SINGAPORE STRAIT - Bedok Southwards - Legend.**

Source: UK Hydrographic Office

**Chart 4037** [ *previous update 37/08* ] WGS84 DATUM

Amend	legend to, <i>Dredging works in progress</i> (see NM 555(T)/08), centred on:	1° 13′.880N., 103° 54′.780E.
-------	--	------------------------------

**Chart 4041** [ *previous update 37/08* ] WGS84 DATUM

Amend	legend to, <i>Dredging works in progress</i> (see NM 555(T)/08), centred on:	1° 14′.50N., 103° 56′.00E.
-------	--	----------------------------

**557\* INDONESIA - Sumatera - Pulau Batam Northwards - Approaches to Selat Bulan and T Sengkuang Northwestwards - Buoyage.**

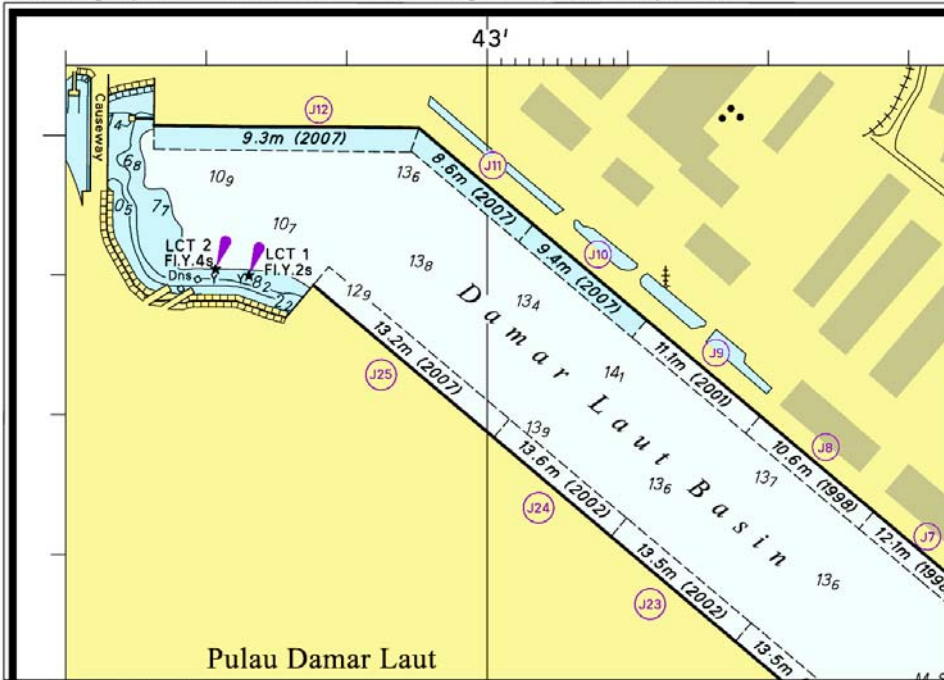
Source: DG SeaComm

**Chart 4041** [ *previous update 556/08* ] WGS84 DATUM

Insert	 Fl. Y.4s	1° 09′.27N., 103° 55′.70E.
	 Fl. Y.2s	1° 11′.07N., 103° 54′.60E.
	 Fl. Y.3s	1° 13′.33N., 103° 59′.40E.

V  
REPRINT OF ADMIRALTY NOTICES TO MARINERS  
FOR DUAL BADGED CHARTS

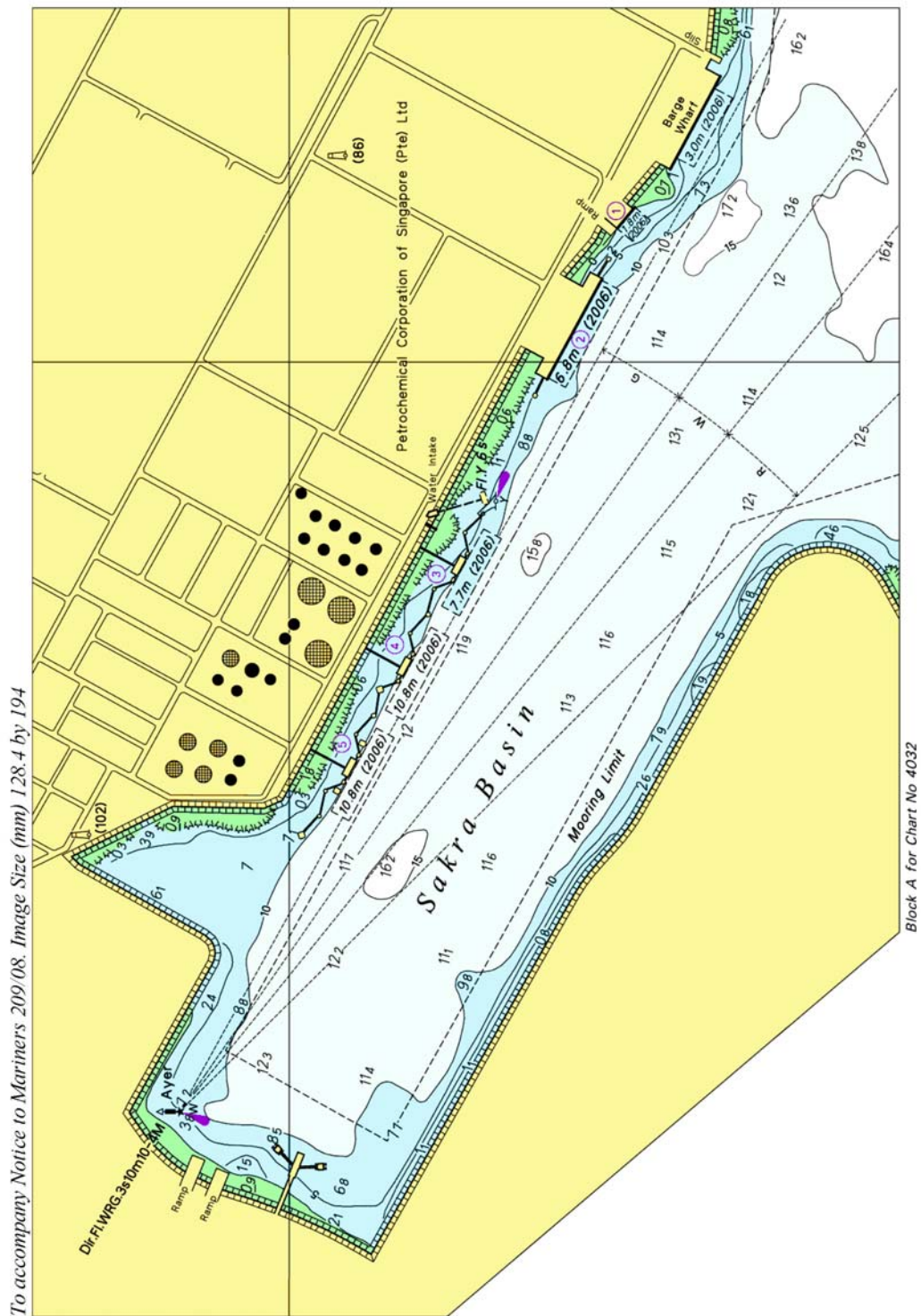
To accompany Notice to Mariners 5785/07. Image Size (mm) 89.3 by 125.3



Block for Chart No 4034



V  
REPRINT OF ADMIRALTY NOTICES TO MARINERS  
FOR DUAL BADGED CHARTS

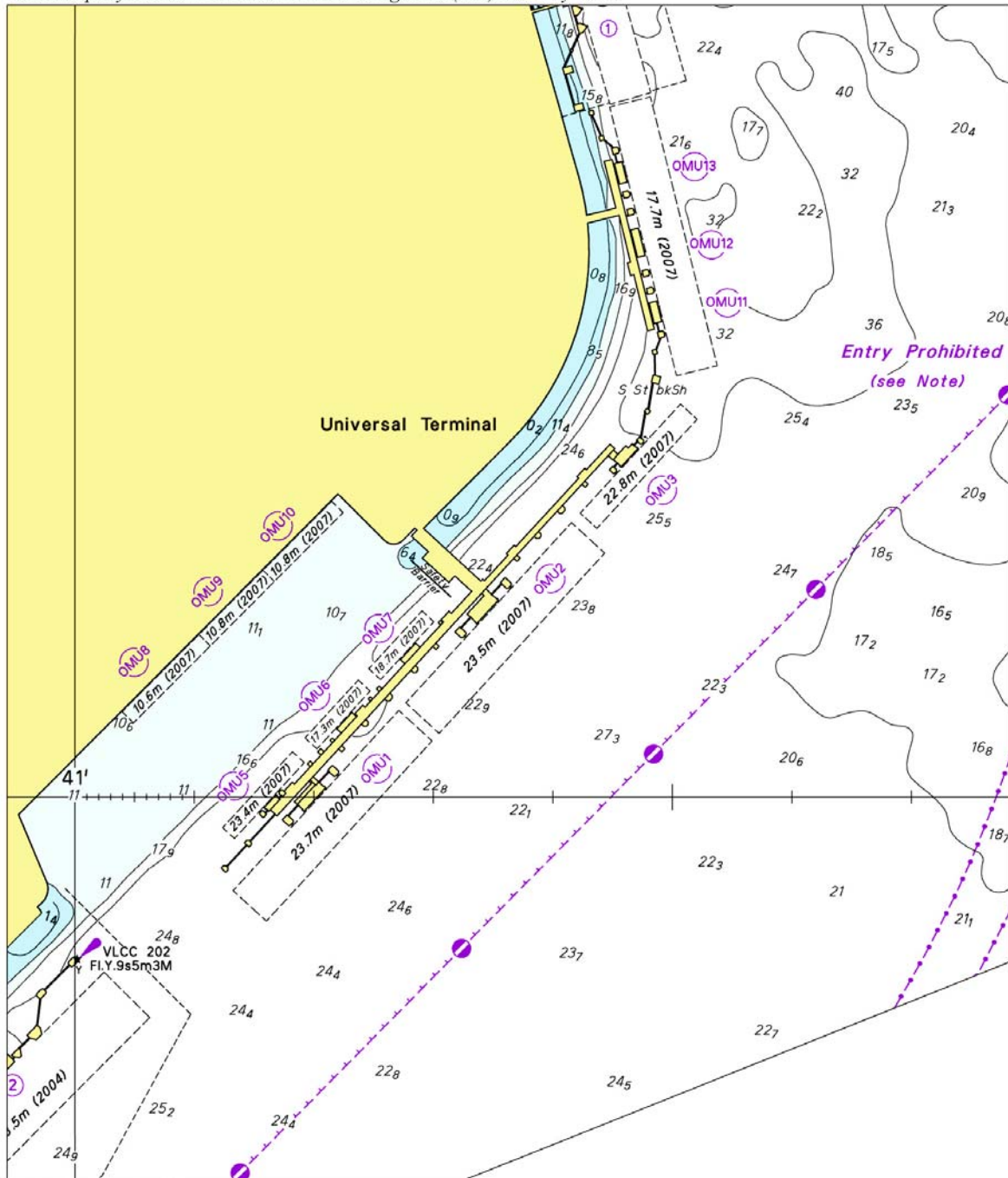


To accompany Notice to Mariners 209/08. Image Size (mm) 128.4 by 194

Block A for Chart No 4032

V  
REPRINT OF ADMIRALTY NOTICES TO MARINERS  
FOR DUAL BADGED CHARTS

To accompany Notice to Mariners 209/08. Image Size (mm) 182.4 by 155.9



Block B for Chart No 4032



**SINGAPORE ELECTRONIC NAVIGATIONAL CHARTS (ENC) DISTRIBUTORS**

Please approach any of the appointed distributors to purchase the Singapore ENC.

<b>CONTACT PERSON/ DESIGNATION</b>	<b>ADDRESS</b>	<b>TELEPHONE/FAX NO./EMAIL/WEBSITE</b>
Mr Chong Chee Meng General Manager	DPM (Singapore) Pte Ltd 1 Maritime Square, #09-72 Harbour Front Centre, Singapore 099253	Tel. No.: +65 6270 4060 Fax No.: +65 6276 3858 Email: <a href="mailto:sales@dpsmsingapore.com.sg">sales@dpsmsingapore.com.sg</a> Website: <a href="http://www.dpsmsingapore.com.sg">http://www.dpsmsingapore.com.sg</a>
Mr Hamzah Akhbar MDS Branch Manager	Kelvin Hughes(S) Pte Ltd 8 Pandan Avenue #02-00, Singapore 609384	Tel. No.: +65 6545 9880 ext.24 Fax No.: +65 6545 8892 Email: <a href="mailto:hamzah.akhbar@khsing.com">hamzah.akhbar@khsing.com</a> Website: <a href="http://www.kelvinhughes.co.uk">http://www.kelvinhughes.co.uk</a>
Mr Philip Loh Sales Manager	Motion Smith 76 Shenton Way #01-01, Singapore 079119	Tel. No.: +65 6220 5098 Fax No.: +65 6225 4902 Email: <a href="mailto:sales@motsmith.com">sales@motsmith.com</a> Website: <a href="http://www.motsmith.com">http://www.motsmith.com</a>
Mr Dexter Lee Regional Sales Manager	Transas Marine Pacific Pte Ltd 750C Chai Chee Road, Technopark@Chai Chee, #04-07 Singapore 469003	Tel. No.: +65 6443 3061 Fax No.: +65 6443 3025 Email: <a href="mailto:dexter@transas.com.sg">dexter@transas.com.sg</a> Website: <a href="http://www.transas.com.sg">http://www.transas.com.sg</a>
Mr Choy Kum Weng Director	Vector Services Pte Ltd 15 West Coast Highway, #02-14A Pasir Panjang Building Singapore 117861	Tel. No.: +65 6777 3602 Fax No.: +65 6777 9203 Email: <a href="mailto:kwchoy@pacific.net.sg">kwchoy@pacific.net.sg</a>
Mr George Arts President	Marine Press of Canada 640 Rue St-Paul Ouest, Suite 300 Montreal (QC) Canada, H3C1L9	Tel. No.: (514) 866-8342 Fax No.: (514) 866-9050 Email : <a href="mailto:sales@marinepress.com">sales@marinepress.com</a> Website: <a href="http://www.marinepress.com">http://www.marinepress.com</a>
Mr Thomas Wilde Superintendent	HanseNautic GmbH Bade & Hornig, Eckardt & Messtorff Herrengaben 31 D-20459 Hamburg, Germany	Tel. No.: +49 40 374 811-32 Fax No.: +49 40 366 400 Email: <a href="mailto:wilde@hansenautic.de">wilde@hansenautic.de</a> Website : <a href="http://www.HanseNautic.com">http://www.HanseNautic.com</a>
Ms Verena Borsos Manager	SevenCs AG + Co. KG Ruhrstrasse 90, D-22761 Hamburg, Germany	Tel. No.: +49 40 853 58 6940 Fax No.: +49 40 853 58 6949 Email: <a href="mailto:sales@chartworld.com">sales@chartworld.com</a> Website : <a href="http://www.sevencs.com">http://www.sevencs.com</a>
Mr Keiji Shimizu General Manager	Japan Hydrographic Association Electronic Charts Division Daiichi Sogo Bldg, 6F 1-6-6, Hanedakuko, Ota-ku Tokyo 144-0041 Japan	Tel. No.: +81 3 5708 7093 Fax No.: +81 3 5708 7094 Email: <a href="mailto:enc-support@jha.jp">enc-support@jha.jp</a> Website: <a href="http://www.jha.jp">http://www.jha.jp</a>
Mr Jester-Kim Foreign Business Department Manager	E_MLX Co. Ltd Ssangyong Research No.2 Lab Sinseong-Dong 100 Yusong-Gu, Daejeon 305-804, Korea (ROK)	Tel. No.: +82 42 865 1893 Fax No.: +82 42 865 1884 Email: <a href="mailto:Jester-kim@emlx.co.kr">Jester-kim@emlx.co.kr</a>
Mr C G Kim Managing Director	Korean Ocean Development Co. Ltd 2ND Fl, Dongbang Bldg, 25-4, 4 Ga Jungang-Dong, Jung-Gu, Busan, South Korea	Tel. No.: +82 514 66 0760 Fax No.: +82 514 65 9345 Email: <a href="mailto:sales@chartkorea.com">sales@chartkorea.com</a> Website: <a href="http://www.chartkorea.com">http://www.chartkorea.com</a>

**SINGAPORE ELECTRONIC NAVIGATIONAL CHARTS (ENC) DISTRIBUTORS**  
Please approach any of the appointed distributors to purchase the Singapore ENC.

<b>CONTACT PERSON/ DESIGNATION</b>	<b>ADDRESS</b>	<b>TELEPHONE/FAX NO./EMAIL/WEBSITE</b>
Mr Kjell Nodland	Jeppesen Norway A/S P.O Box 212 , N-4379 Egersund, Norway	Tel No.: +47 514 64 700 Fax No.: +47 514 64 701 Email: <a href="mailto:enc@c-map.no">enc@c-map.no</a> Website : <a href="http://www.c-map.no">http://www.c-map.no</a>
Mr Roar Moe International Marketing Coordinator	Maritime Information System AS (MARIS) Danholmen 25, No.3115 Tonsberg, Norway	Tel. No.: +47 33 30 42 50 Fax No.: +47 33 30 42 51 Email: <a href="mailto:roar.moe@maris.no">roar.moe@maris.no</a> Website: <a href="http://www.maris.no">http://www.maris.no</a>
Ms Eva Hegland Sales, order and distributor support.	PRIMAR STAVANGER Lervigsveien 36, P.O Box 60, N-4001 Stavanger, Norway	Tel. No.: +47 51 93 9500 Fax No.: +47 51 93 9501 Email: <a href="mailto:sales@primar.org">sales@primar.org</a> Website : <a href="http://www.primar-stavanger.org">http://www.primar-stavanger.org</a>
Mrs Christine Trickett Product Manager	United Kingdom Hydrographic Office Admiralty Way, Taunton, Somerset TA1 2DN United Kingdom	Tel. No.: +44 (0)1823 337900 Fax No.: +44 (0)1823 284077 Emails: <a href="mailto:vargroup@ukho.gov.uk">vargroup@ukho.gov.uk</a> & <a href="mailto:christine.trickett@ukho.gov.uk">christine.trickett@ukho.gov.uk</a> Website: <a href="http://www.ukho.gov.uk">http://www.ukho.gov.uk</a>

---

### Agents for the Maritime and Port Authority of Singapore Publications

**Agent's name** : **DPM (Singapore) Pte Ltd**  
**Address** : 1 Maritime Square #09-72, HarbourFront Centre,  
Singapore 099253  
**Telephone** : (65) 6270 4060  
**Fax No.** : (65) 6276 3858  
**E-mail** : [sales@dpmsingapore.com.sg](mailto:sales@dpmsingapore.com.sg)  
**Internet Web Site** : <http://www.dpmsingapore.com.sg>

**Agent's name** : **E.W. Liner Charts & Publications Pte Ltd**  
**Address** : 102F, Pasir Panjang Road, #08-01, Citilink Warehouse Complex,  
Singapore 118530  
**Telephone** : (65) 6323 0773  
**Fax No.** : (65) 6323 0775  
**E-mail** : [ewliner@singnet.com.sg](mailto:ewliner@singnet.com.sg)  
**Internet Web Site** : <http://www.ewliner.com>

**Agent's name** : **Motion Smith**  
**Address** : 76 Shenton Way # 01-01  
Singapore 079119  
**Telephone** : (65) 6220 509  
: (After office hours: 8163 9993)  
**Fax No.** : (65) 6225 4902  
**E-mail** : [sales@motsmith.com](mailto:sales@motsmith.com)  
**Internet Web Site** : <http://www.motsmith.com>

---

## HYDROGRAPHIC NOTE - Instructions

1. Mariners are requested to notify the Chief Hydrographer, Maritime and Port Authority of Singapore, when new or suspected dangers to navigation are discovered, changes are observed in aids to navigation or where corrections to nautical publications may be necessary. Reports, which cannot be confirmed or are lacking in certain details should not be withheld.
2. Any ambiguities of time, positioning and depth should be stressed and any firm expectation of being able to check the information provided on a following voyage should be mentioned.
3. Mariners using satellite position fixing systems, eg. GPS, should provide details of equipment and datum used (where applicable). Where bearings (true or magnetic) are taken visually or by radar to fix a position, it should include more than two objects in order to provide a check on its accuracy. A position may also be defined by bearing and distance from a conspicuous object eg. beacon, lighthouse etc.
4. The note should include a tracing or a digital image of the chart used and the details should be clearly marked.
5. Echo sounders frequently register greater depths than the advertised maximum depth for the equipment, eg. a trace appearing at 50 metres may be in fact be 550 metres or even 1050 metres for equipment whose maximum depth is 500 metres. Erroneous depths caused by 2nd transmission error can usually be recognised by the following:
  - (a) the tracing being weaker than normal for the depth registered,
  - (b) the trace appearing to pass through the transmission line,
  - (c) the feathery nature of the trace.
6. An acknowledgement of receipt will be sent. When a Notice to Mariners is issued, the sender's vessel or name is quoted as the source unless the same information is also received in foreign Notices to Mariners.
7. Reports of shoals, uncharted dangers and defects in aids to navigation may also be made to the appropriate Singapore Port Operations Control Station on VHF Channels 10, 12, 14, 68 or 73.

## HYDROGRAPHIC NOTE

To:

Chief Hydrographer  
Hydrographic Department  
Maritime and Port Authority of Singapore  
460 Alexandra Road PSA Building #20-00  
Singapore 119963

Tel : (65) 6375 1227  
Fax : (65) 6278 7646  
Email : [hydrographic@mpa.gov.sg](mailto:hydrographic@mpa.gov.sg)

**Sender's Contact Details** :

Date : .....

Name of Vessel : .....

Address of Sender : .....

Tel : ..... Fax : .....

Email : .....

**Nature of Observation** :

General Location : .....

Subject : .....

Position : Lat. .... Long. ....

Charts Used : .....

Date & Time of Observation : .....

Details : .....

.....

.....

Attachment : .....

**Equipment Used** :

Type of Position Fixing : ..... GPS / DGPS ..... Others : .....

Type of Echo Sounder : .....

Name and Signature : .....

Ship's/Company's stamp : .....