



SINGAPOREAN NOTICES TO MARINERS

SECTION	CONTENT	Page
I	Index of Charts & Publications	27
II	New Publications	30
	Notices to Mariners and Chart Corrections	33
	Temporary and Preliminary Notices	35
III	Navigational Information	36
	Amendments to Publications	38
IV	Reprint of Radio Navigational Warnings	40
V	Reprint of Admiralty Notices to Mariners for Dual Badged Charts	41

The monthly Notices to Mariners contain corrective information affecting charts published by the Hydrographic Department, Maritime and Port Authority of Singapore. The information contained in these Notices should be updated on the charts affected. Notices under Section II apply only to the particular Singaporean Chart(s) indicated.

Mariners are requested to notify the Chief Hydrographer, Maritime and Port Authority of Singapore, immediately on the discovery of new dangers or suspected dangers to navigation and of changes or defects in aids to navigation. See Hydrographic Note on back page.

The monthly Singaporean Notices to Mariners can be accessed directly from the MPA website:

<http://www.mpa.gov.sg/> > Circulars & Notices > Singaporean NTM

or

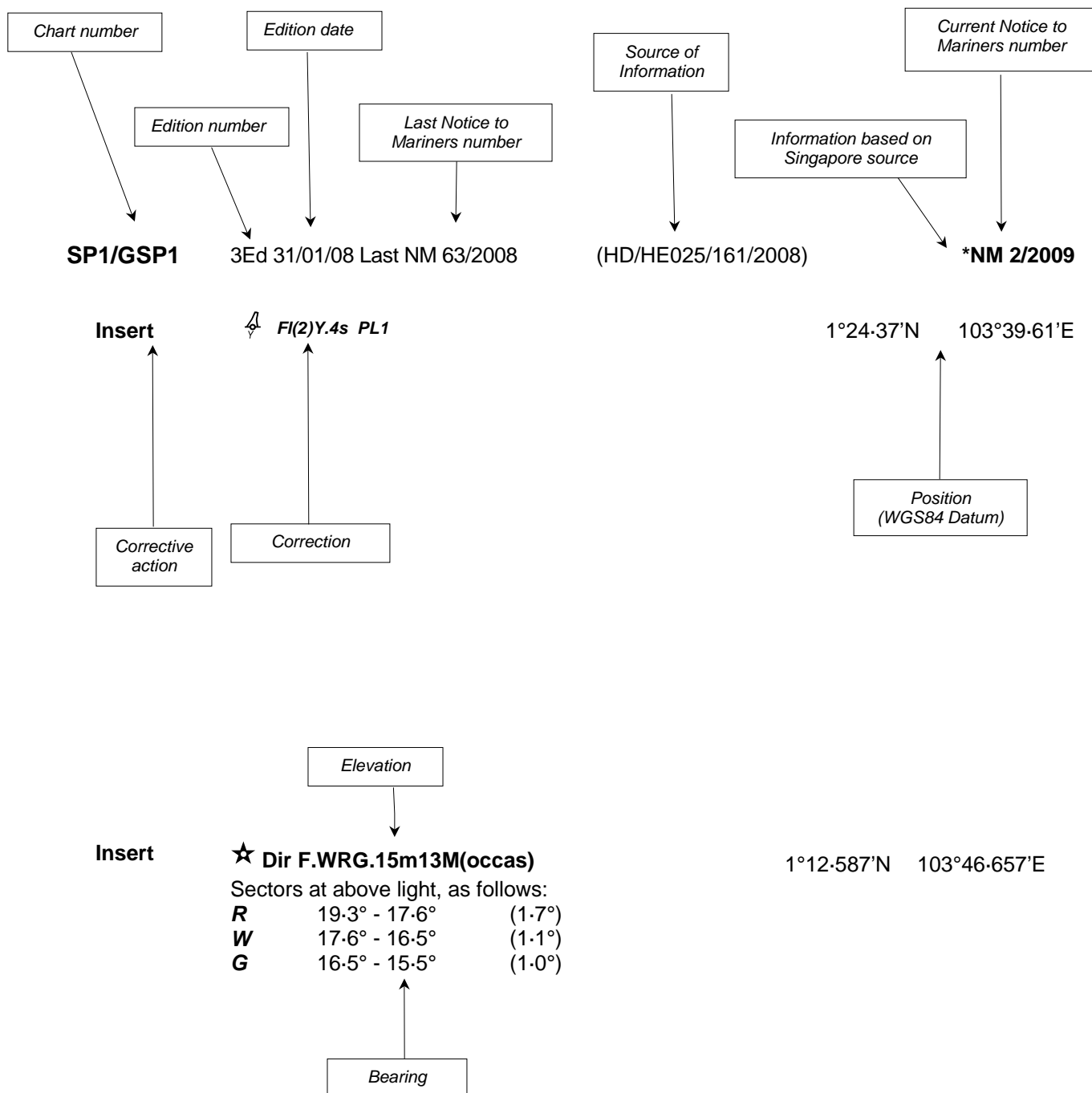
<http://www.mpa.gov.sg/infocentre/publications/noticesmari.htm>

This service is offered free of charge.

Hydrographic Department
Maritime and Port Authority of Singapore
460 Alexandra Road
PSA Building #20-00
Singapore 119963
Tel: (65) 6375 1227
Fax: (65) 6278 7646

EXPLANATION OF FORMAT

The elements of a typical chart correction are explained below.



Notes:

- a) Notice to Mariners number followed by:
 - T** indicates a Temporary Notice (eg. *NM 80T/2008).
 - P** indicates a Preliminary Notice (eg. *NM 80P/2008).
- b) Bearings are referred to True Compass in degrees clockwise from 000° to 359°. Bearings related to lights are from seaward.
- c) Heights and elevations are above Mean High Water Springs.

I
INDEX OF CHARTS AND PUBLICATIONS

DESCRIPTION	NOTICE NO.	PAGE NO.
Index of Singaporean Charts	-	27
Index of Dual Badged Charts	-	28
Index of Singapore Electronic Navigational Charts (ENC)	-	29
New Publication "SINGAPORE TIDE TABLES 2009"	-	30
New Edition Singaporean Charts	-	31
New Edition Dual Badged Charts	-	32
Singaporean Chart SP1/GSP1	*13, *14	33
Singaporean Chart 200	15, 16, 17	33
Singaporean Chart 201	17, 18, 19	33
Singaporean Chart 202	20	34
Singaporean Chart 502	*14	34
Temporary and Preliminary Notices	*21T	35
Port Marine Notices	*22	36
(Asia America Gateway) Submarine cable – Singapore (Changi Ferry Terminal) to Singapore Strait Eastwards	*23	36
Singaporean Print on Demand (POD) Charts	*24	37
Updating of Publication "SINGAPORE PORT INFORMATION 2008/2009 EDITION"	*25	38
Reprint of Radio Navigational Warnings	-	40
Reprint of Admiralty Notices to Mariners for Dual Badged Charts	-	41
Singapore Electronic Navigational Charts (ENC) Distributors	-	42

* Denotes information are based on Singapore source.

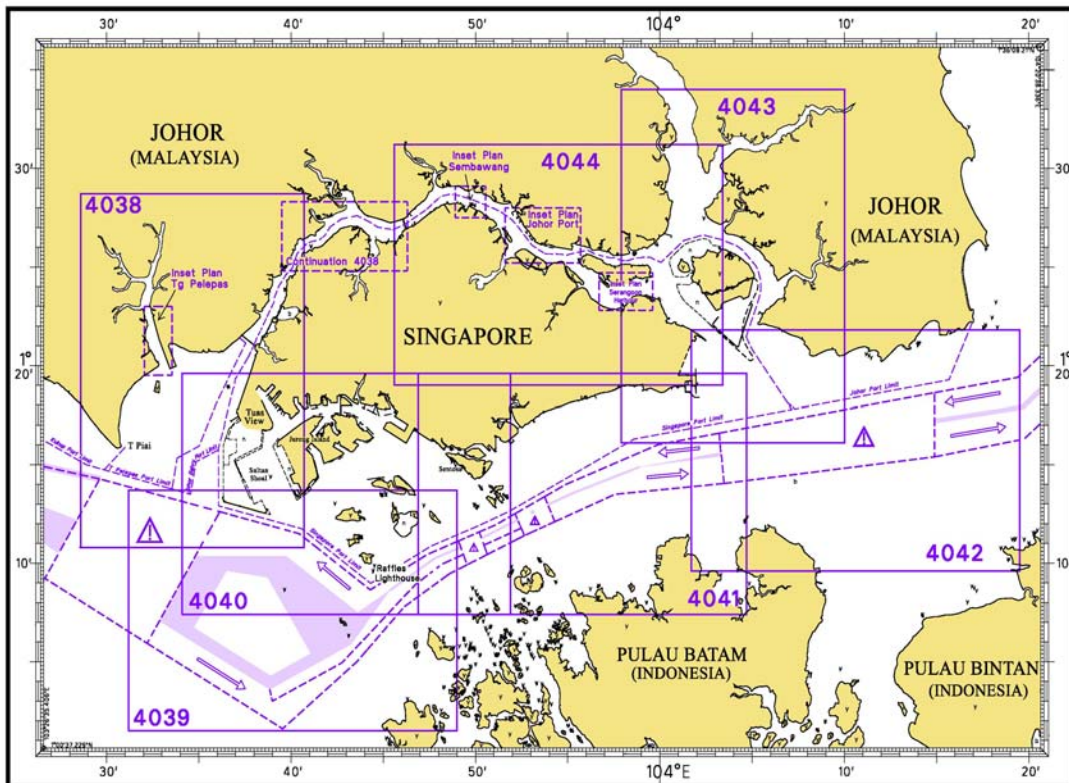
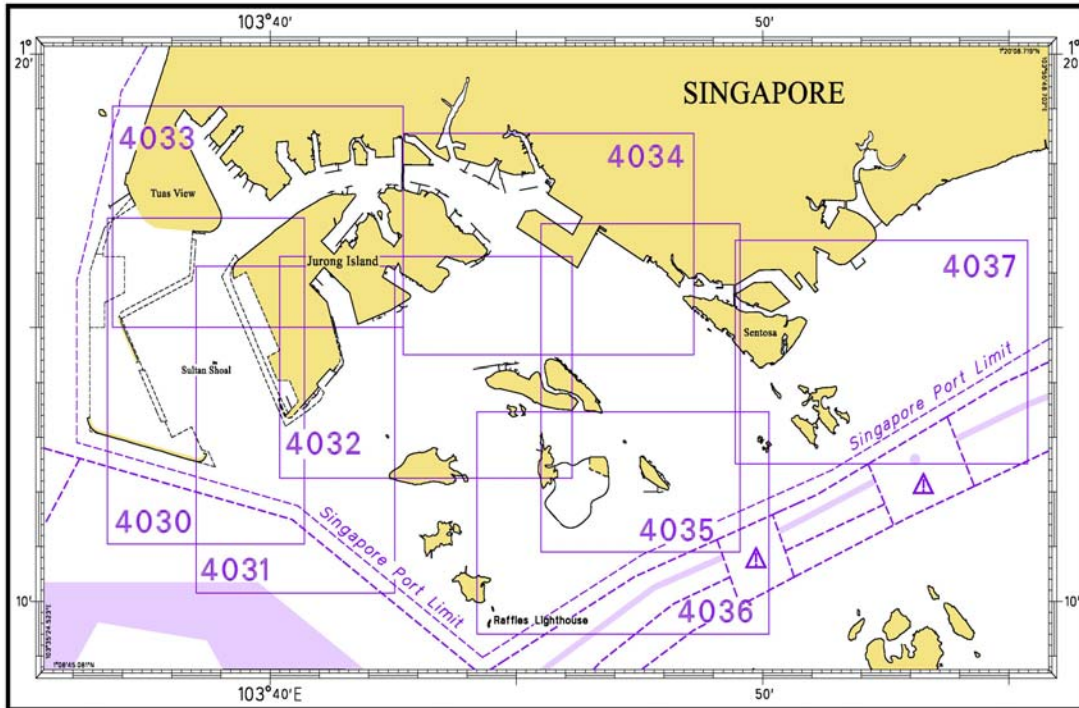
INDEX OF CHARTS AND PUBLICATIONS

NOTICE NO.	DESCRIPTION	PAGE NO.	NOTICE NO.	DESCRIPTION	PAGE NO.
-	Index of Singaporean Charts	27	*25	Updating of Publication "SINGAPORE PORT INFORMATION 2008/2009"	38
-	Index of Dual Badged Charts	28	-	Reprint of Radio Navigational Warnings	40
-	Index of Singapore Electronic Navigational Charts (ENC)	29	-	Reprint of Admiralty Notices to Mariners for Dual Badged Charts	41
-	New Publication "SINGAPORE TIDE TABLES 2009"	30	-	Singapore Electronic Navigational Charts (ENC) Distributors	42
-	New Edition Singaporean Charts	31			
-	New Edition Dual Badged Charts	32			
*13	SP1/GSP1	33			
*14	SP1/GSP1, 502	33, 34			
15	200	33			
16	200	33			
17	200, 201	33			
18	201	33			
19	201	33			
20	202	34			
*21T	Temporary and Preliminary Notices	35			
*22	Port Marine Notices	36			
*23	(Asia America Gateway Submarine Cable - Singapore Changi Ferry Terminal to Singapore Strait Eastwards	36			
*24	Singaporean Print on Demand (POD) Charts	37			

* Denotes information are based on Singapore source.

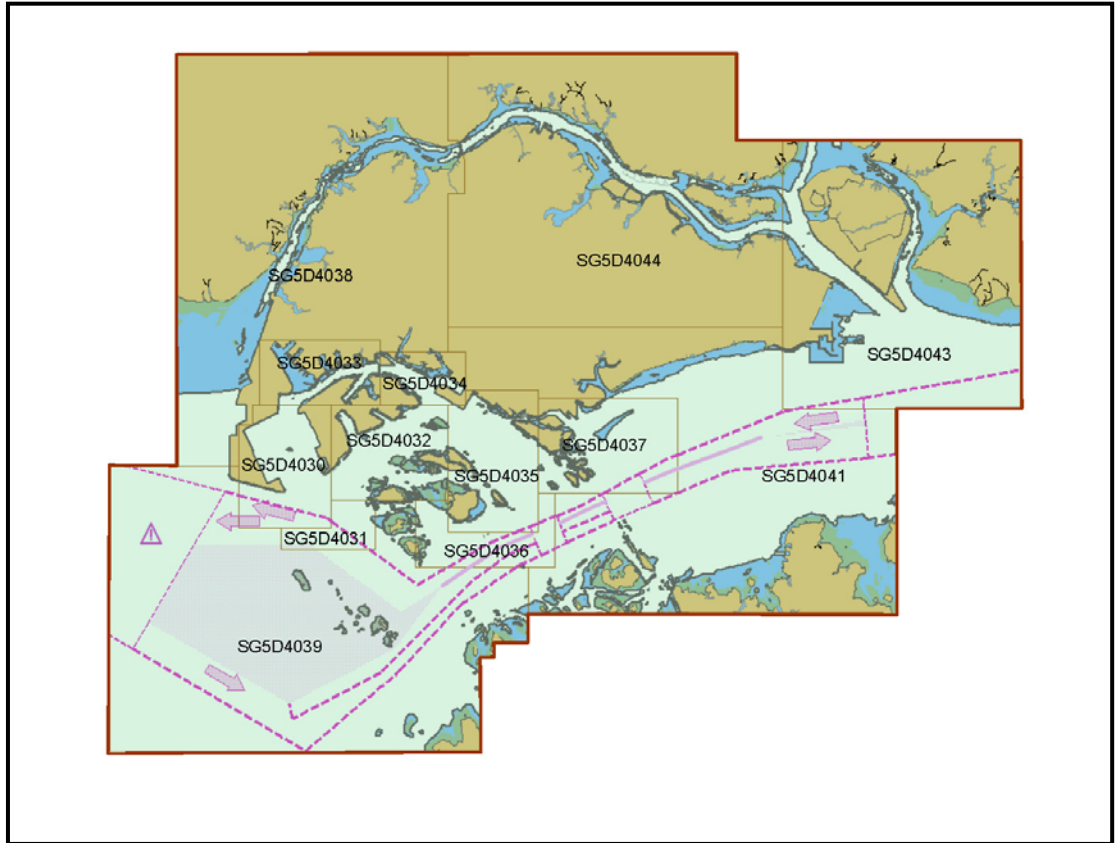
I INDEX OF CHARTS AND PUBLICATIONS

INDEX OF DUAL BADGED CHARTS



I
INDEX OF CHARTS AND PUBLICATIONS

INDEX OF SINGAPORE ELECTRONIC NAVIGATIONAL CHARTS (ENC)



II NEW PUBLICATIONS



SINGAPORE TIDE TABLES YEAR 2009 PUBLISHED ON 22 SEPTEMBER 2008

Summary of Publication

- (a) This 239 page book contains the following information:
The predictions consist of 5 main segments to facilitate easy reference:
- High and Low Water Predictions
 - Hourly Tidal Height Predictions
 - Hourly Tidal Stream Predictions
 - Maximum and Slack Tidal Stream Predictions
 - Malacca Strait – High and Low Water Predictions
- The predictions cover stations in Singapore and selected stations along the Malacca Strait.
- (b) As in earlier publications, the presentation of the predictions is enhanced with colour codes so as to differentiate the various states of tidal heights, eg falling or rising tide and tidal stream directions. Moon phases, eg full and new moon, are also included in each calendar month to complement the prediction values.
- (c) The tidal heights are given in metres above Chart Datum (CD). The CD is the datum of soundings shown on the Singaporean Charts and Dual Badged Charts covering the area. A table showing the various tidal levels eg. Mean High Water Springs, Mean Low Water Springs etc, at various stations with reference to CD is also included in this publication.

To Whom Will It Be Useful?

Mariners, shipping community, port users and other interested users.

Frequency of Publication

Annually.

Cost of Publication

To be advised by Chart Agents.

Order Enquires:

This publication is available from the following Chart Agents:

- 1) DPM (Singapore) Pte Ltd
 - 2) E.W. Liner Charts & Publications Pte Ltd
 - 3) Motion Smith
- (Please refer to Page 43 for details.)
-

II NEW PUBLICATIONS

NEW EDITION SINGAPOREAN CHARTS PUBLISHED ON 15 JANUARY 2009

Chart Number : SP1
 Title : Anchorages and Aids to Navigation
 Coverage : Lat 1° 08.20' N 1° 29.40' N
 Long 103° 35.70' E 104° 07.20' E
 Scale : 1 : 60 000
 Date Published : 15 January 2009
 Size of Chart : 973.9 X 651.2mm
 Remarks : This new edition includes revised anchorages, new topography, submarine cables, aids to navigation and depth contours covering the entire chart.
 This new edition supersedes the earlier edition published on 31 January 2008.

Chart Number : GSP1
 Title : Anchorages and Aids to Navigation (with area reference)
 Coverage : Lat 1° 08.20' N 1° 29.40' N
 Long 103° 35.70' E 104° 07.20' E
 Scale : 1 : 60 000
 Date Published : 15 January 2009
 Size of Chart : 973.9 X 651.2mm
 Remarks : This new edition includes revised anchorages, new topography, submarine cables, aids to navigation and depth contours covering the entire chart.
 This new edition supersedes the earlier edition published on 31 January 2008.

NEW EDITION SINGAPOREAN CHART PUBLISHED ON 15 JANUARY 2009

Chart Number : CHARTS FOR SMALL CRAFT
 Title : Singapore Strait and Adjacent Waterways – 2009/2010 Edition
 Date Published : 15 January 2009
 Size of chart : 600 x 400 mm
 Remarks : The publication contains 19 Small Craft Charts and related nautical information bound into an atlas measuring 600 x 400 mm. The pages are laminated to prevent damage from seawater.
 The symbols, abbreviations and term depicted on these charts are consistent with the International Hydrographic Organization Chart Standards and Specifications.
 Symbols for the locations of pleasure craft facilities and areas for sea sport activities such as board sailing, dinghy sailing, keelboat sailing, power-boating and water-skiing are also included and highlighted in red.
 Chart of the same publication Edition 2007 published on 31 January 2007 would be superseded.

II NEW PUBLICATIONS

NEW EDITION DUAL BADGED CHARTS TO BE PUBLISHED ON 19 FEBRUARY 2009

The following new edition charts are jointly produced by MPA, Hydrographic Department and the United Kingdom Hydrographic Office :






Chart Number	:	4034
Title	:	Port of Singapore – East Jurong Channel, Pasir Panjang Terminal and West Keppel Fairway
Coverage	:	Lat 1° 14.50' N 1° 18.55' N Long 103° 42.70' E 103° 48.60' E
Scale	:	1 : 10 000
Date Published	:	19 February 2009
Size of Chart	:	1094.3 X 746.3mm
Remarks	:	This new edition includes area to be reclaimed and working area in the approaches to Pasir Panjang Terminal. Three caution note showing 'Ferries (see Note)' were inserted. This edition also includes updated surveys covering these areas : <ul style="list-style-type: none"> • West of Sentosa. • Sungai Jurong. • North East of Jurong Island. • Off Tanjong Penjuru. • West Keppel Fairway • Approaches to Pasir Panjang Terminal.

The existing chart of the same number published on 24 July 2008 is superseded.

Chart Number	:	4035
Title	:	Port of Singapore – Western Anchorage, Jong Fairway and Cruise Bay
Coverage	:	Lat 1° 10.90' N 1° 16.90' N Long 103° 45.50' E 103° 49.54' E
Scale	:	1 : 10 000
Date Published	:	19 February 2009
Size of Chart	:	749.4 X 1105.7mm
Remarks	:	This new edition includes area to be reclaimed and working area in the approaches to Pasir Panjang Terminal. A caution note showing Ferries (see Note) was inserted. This edition also includes updated surveys covering these areas : <ul style="list-style-type: none"> • West of Sentosa. • Shell SBM Area. • North of Pulau Jong. • West Keppel Fairway • Approaches to Pasir Panjang Terminal.



The existing chart of the same number published on 24 July 2008 is superseded.


II
NOTICES TO MARINERS AND CHART CORRECTIONS

SP1/GSP1	4Ed 15/1/09	(HD/HE025/16/2009)	*NM 13/2009
Insert	legend '(collapsed)'	1°14.18'N	103°46.44'E
		(HD/HE025/15/2009)	
	 Q(6)+LFl.15s	1°14.15'N	103°46.47'E
		(HD/HY/N00107708)	*NM 14/2009
Insert	 Wk	1°17.76'N	104°03.60'E
<hr/>			
200	2Ed 30/11/05 Last NM 4/2009	(Admiralty Notices 1/109/2009)	NM 15/2009
Substitute	★ F.R for Fl.R	2°14.34'N	102°07.81'E
	★ F.R for Fl.R	2°15.29'N	102°06.99'E
Delete	Beacon colour 'G'	2°15.29'N	102°06.99'E
	Beacon colour 'R'	2°14.34'N	102°07.81'E
		(Admiralty Notices 4/359/2009)	NM 16/2009
Insert		2°29.25'N	101°45.36'E
		MSSENC Technical Meeting November 2008	NM 17/2009
Substitute	depth 14 for depth 15₂	2°14.82'N	101°46.83'E
<hr/>			
201	3Ed 5/10/07 Last NM 154/2008	MSSENC Technical Meeting November 2008	NM 17/2009
Substitute	depth 14 for depth 15₂	2°14.82'N	101°46.83'E
		(Admiralty Notices 1/108/2009)	NM 18/2009
Insert	depth 20₃	1°47.40'N	101°51.26'E
		MSSENC Technical Meeting November 2008	NM 19/2009
Substitute	 for  PA	1°13.49'N	102°37.47'E

II

NOTICES TO MARINERS AND CHART CORRECTIONS

202	5Ed 19/10/06 Last NM 6/2009	(Admiralty Notices 52/7071/2008)	NM 20/2009
Insert	 , direction of vessel movement 359°		0°58.14'N 103°37.35'E
Delete			0°57.97'N 103°35.89'E

502	4Ed 25/09/08	(HD/HY/N00107708)	*NM 14/2009
Insert	 <i>Wk</i>		1°17.76'N 104°03.60'E

II
TEMPORARY AND PRELIMINARY NOTICES

SP1/GSP1

4Ed 15/1/09

(HD/HE025/14/2009)

***NM 21T/2009**

Insert



F(2)5s

1°16.25'N

103°52.26'E

III NAVIGATIONAL INFORMATION

*(NM 22/2009) PORT MARINE NOTICES

The following PMNs have been shortlisted, as they would be of particular interest to mariners.

These notices can be accessed directly from MPA website:

http://www.mpa.gov.sg/circulars_and_notices/portmarine_notices/pm_notices.htm

PMN No.	Subject
218/2008	Construction of seawall and land reclamation in Cruise Bay.
220/2008	Reclamation of Jurong Island Phase 4.
221/2008	Reclamation work at Tuas View extension.
2/2009	Marine Jetty (MJ10) construction works at OILTANKING ODFJELL, Jurong Island.
7/2009	Sand mining at Area 1 and dumping at (i) Jurong Island LNG Project and (ii) Pasir Panjang Terminal Project Working Areas.
8/2009	Restoration of revetment at East Coast Park.
9/2009	Marine jetty construction works at Loyang, off Sungei Selarang.
10/2009	Dredging and construction of Berths (P13 to P18) and stacking/storage yards at Pasir Panjang Terminal.

*(NM 23/2009) (ASIA AMERICA GATEWAY) SUBMARINE CABLE – SINGAPORE (CHANGI FERRY TERMINAL) TO SINGAPORE STRAIT EASTWARDS

Remark : Repair of AAG S1B submarine cable operation.

Date : The working period is extended from 1 February to 31 March 2009.

1. Cable laying and associated operations are in progress between the following positions (in WGS84) :

1°17.853'N	104°12.082'E
1°18.002'N	104°12.267'E

2. Charts affected : 202, 502 and 503

3. Mariners are advised

(a) to navigate with caution

(b) not to anchor or trawl in the vicinity of the cable route.

Source : HD/DB67/01/2009

III NAVIGATIONAL INFORMATION

*(NM 24/2009)

SINGAPOREAN PRINT ON DEMAND (POD) CHARTS

Print On Demand (POD) Charts are the most up-to-date paper nautical charts printed for navigational use. These nautical charts are produced in accordance with the International Hydrographic Organisation (IHO) charting specifications. These official nautical charts are continually updated to the latest Notices to Mariners before they are printed and sold to users.

These POD Charts include 200, 201, 202, 500, 501, 502, 503.

BENEFITS TO OUR CUSTOMERS

Convenience

Customers need not make numerous hand corrections to the nautical charts before use. In addition the updated POD Charts are more accurate and reliable than offset printed charts with hand corrections.

Clarity

Clarity in the presentation of updated information as compared to lithographic printed charts, where in some cases there are several overlapping corrections over existing information.

Coverage

The POD Charts cover the Malacca and Singapore Straits, from One Fathom Bank to Horsburgh Lighthouse.

III
AMENDMENTS TO PUBLICATIONS

***(NM 25/2009) UPDATING OF PUBLICATION “SINGAPORE PORT INFORMATION 2008/2009 EDITION”**

1 Page 94

Insert the following:

Appendix 1

Delete	Insert
VERTICAL CLEARANCE IN METRES ABOVE HWS	VERTICAL CLEARANCE IN METRES ABOVE MHWS

2 Page 118

Insert the following:

**CHARACTERISTICS OF AIDS TO NAVIGATION
PULAU SEBAROK**

Name of Beacon/ Buoy	Position Lat. N Long. E Deg Min	Position Lat. N Long. E Deg Min
	Delete	Insert
VOTTS 2 Beacon (P Sebarok jetty 5)	01°12.007 103°45.592	01°12.007 103°47.592

Source : HE025/08/07

3 Page 139 – Item 7

Insert the following:

PASIR PANJANG TERMINAL ((PSA Corporation Ltd)(1°17.2’N, 103°46.1’E)

Berth	Length of Berth	Depth Alongside (Year Surveyed)	Controlling Depth In Approaches
P14	308m	15.0m(2008)	-

Source: HD/HY Code C00115708

4 Page 144 – Item 16.1

Insert the following:

JURONG ISLAND (EXXONMOBIL ASIA PACIFIC PTE LTD)(1°16.0’N, 103°42.3’E)

Berth	Length of Berth	Depth Alongside (Year Surveyed)	Controlling Depth In Approaches
Barge Wharf (Uploading)	100m	4.7m(2008)	-

Source: HD/HY Code E00103008

III
AMENDMENTS TO PUBLICATIONS

5 Page 145 – Item 20

JURONG TERMINAL (JURONG PORT PTE LTD)(1°18-3'N, 103°43-1'E)

Insert the following:

Berth	Depth Alongside (Year Surveyed)	
	Delete	Insert
J4	12.9m(2007)	12.9m(2008)
J4A	13.3m(2008)	13.0m(2008)
J11	8.6m(2007)	9.9m(2008)

Source: HD/HY Code H00102508, H00101908

6 Page 153 – Item 39

Insert the following:

TANJONG PENJURU (VOPAK TERMINALS SINGAPORE PTE LTD)(1°17-8'N, 103°43-8'E)

Berth	Depth Alongside (Year Surveyed)	
	Delete	Insert
3	12.6m(2005)	12.1m(2008)

Source: HD/HY Code H00103008

IV
REPRINT OF RADIO NAVIGATIONAL WARNINGS

TT173

VSLs IN EAST JOHOR STRAIT ADVISED TO NAVIGATE WITH CAUTION WHEN NEAR THE PROJECT AREAS OFF PU. TEKONG, PU. SERANGOON, CHANGI AND MALANG PAPAN AS SHALLOW WATER AREAS EXIST. VSLs ADVISED TO KEEP LOOKOUT FOR TUGS AND BARGES NAVIGATING NEAR THE PROJECT AREAS AND PASSENGER FERRIES CROSSING BETWEEN CHANGI AND PULAU TEKONG AND VICINITY OF PASIR GUDANG

TT352

DAYMARK SIGNALS AT RAFFLES LIGHT HOUSE IS OUT OF ORDER

TT619

DREDGER "GERARDUS MERCATOR" IS CONDUCTING DREDGING OPS IN THE AREA BOUNDED BY COORDINATES:

- a) 01°15.827' N 103°57.737' E
- b) 01°14.865' N 103°58.134' E
- c) 01°13.298' N 103°54.401' E
- d) 01°13.884' N 103°54.131' E

ALL VSLs ARE ADVISED TO PROCEED AT SAFE SPEED GIVE A WIDE BERTH.

TT611

A SHIP REPORTED LOSING HER PORT ANCHOR AND 12 SHACKLES OF ANCHOR CHAIN, IN APPROX POSN 01°11.55' N 103°52.52' E OFF BATU BERHENTI BEACON. MARINERS ARE TO EXERCISE CAUTION.

TT631

A WOODEN CRAFT SUNK IN APPROX POSN 01°19.49' N 104° 02.79' E.

TT746

BATU BERHANTI BUOY FL(2)5s AT POSN 01°11.79' N 103°53.53' E IS REPORTED UNLIT

ISSUED BY SINGAPORE PORT OPERATION CONTROL CENTRE
(as at 11 January 2009 12:30:00 UTC)

V
**REPRINT OF ADMIRALTY NOTICES TO MARINERS
 FOR DUAL BADGED CHARTS**

These notices can be accessed directly from UKHO Website:

<http://www.ukho.gov.uk/amd/weeklyNms.asp>

548* SINGAPORE – Johor Strait – Tengeh Reservoir Northwards – West Reach – Buoyage.

Source: Maritime and Port Authority of Singapore

Chart 4038 [*previous update 6015/08*] WGS84 DATUM

Insert	 FI(2)Y.4s PL1	1° 24'.37N., 103° 39'.61E.
	 FI(2)Y.6s PL2	1° 23'.10N., 103° 39'.06E.
	 FI(2)Y.8s PL3	1° 21'.86N., 103° 38'.44E.

Updated to Admiralty Notices to Mariners Edition No. 5 of 2009 dated 29 January 2009.

SINGAPORE ELECTRONIC NAVIGATIONAL CHARTS (ENC) DISTRIBUTORS
Please approach any of the appointed distributors to purchase the Singapore ENC.

CONTACT PERSON/ DESIGNATION	ADDRESS	TELEPHONE/FAX NO./EMAIL/WEBSITE
Mr Chong Chee Meng General Manager	DPM (Singapore) Pte Ltd 1 Maritime Square, #09-72 Harbour Front Centre, Singapore 099253	Tel. No.: +65 6270 4060 Fax No.: +65 6276 3858 Email: sales@dpmsingapore.com.sg Website: http://www.dpmsingapore.com.sg
Mr Hamzah Akhbar MDS Branch Manager	Kelvin Hughes(S) Pte Ltd 8 Pandan Avenue #02-00, Singapore 609384	Tel. No.: +65 6545 9880 ext.24 Fax No.: +65 6545 8892 Email: hamzah.akhbar@khsing.com Website: http://www.kelvinhughes.co.uk
Mr Looi Keen Wai Regional Sales Manager	Maritime Information Systems (MARIS) 52, Telok Blangah Road #01-06, Telok Blangah Centre, Singapore 058809	Tel. No.: +65 6276 1472 Fax No.: +65 6276 1473 Email: support@maris.sg Website: http://www.maris.no
Ms Kathrine Bjaroy Marketing Coordinator	Maritime Information System AS (MARIS) Danholmen 25, 3128 Notteroy, Norway	Tel. No.: +47 33 30 42 50 Fax No.: +47 33 30 42 51 Email: roar.moe@maris.no Website: http://www.maris.no
Mr Bernard Wong Sales Manager	Motion Smith 15 Jalan Kilang Barat #08-01/05 Frontech Centre Singapore 159357	Tel. No.: +65 6220 5098 Fax No.: +65 6225 4902 Email: sales@motsmith.com Website: http://www.motsmith.com
Mr Dominic Oliver	Transas Marine Pacific Pte Ltd 750C Chai Chee Road, #04-07, Technopark@Chai Chee, Singapore 469003	Tel. No.: +65 6443 3061 Fax No.: +65 6443 3025 Email: dominic@transas.com.sg Website: http://www.transas.com.sg
Mr Choy Kum Weng Director	Vector Services Pte Ltd 15 West Coast Highway, #02-14A Pasir Panjang Building Singapore 117861	Tel. No.: +65 6777 3602 Fax No.: +65 6777 9203 Email: kwchoy@pacific.net.sg
Mr George Arts President	Marine Press of Canada 640 Rue St-Paul Ouest, Suite 300 Montreal (QC) Canada, H3C1L9	Tel. No.: (514) 866-8342 Fax No.: (514) 866-9050 Email : sales@marinepress.com Website: http://www.marinepress.com
Mr Thomas Wilde Superintendent	HanseNautic GmbH Bade & Hornig, Eckardt & Messtorff Herrengaben 31 D-20459 Hamburg, Germany	Tel. No.: +49 40 374 811-32 Fax No.: +49 40 366 400 Email: wilde@hansenautic.de Website : http://www.HanseNautic.com
Ms Verena Borsos Manager	SevenCs AG + Co. KG Ruhrstrasse 90, D-22761 Hamburg, Germany	Tel. No.: +49 40 853 58 6940 Fax No.: +49 40 853 58 6949 Email: sales@chartworld.com Website : http://www.sevencs.com
Mr Keiji Shimizu General Manager	Japan Hydrographic Association Electronic Charts Division Daiichi Sogo Bldg, 6F 1-6-6, Hanedakuko, Ota-ku, Tokyo 144-0041, Japan	Tel. No.: +81 3 5708 7093 Fax No.: +81 3 5708 7094 Email: enc-support@jha.jp Website: http://www.jha.jp

SINGAPORE ELECTRONIC NAVIGATIONAL CHARTS (ENC) DISTRIBUTORS
Please approach any of the appointed distributors to purchase the Singapore ENC.

CONTACT PERSON/ DESIGNATION	ADDRESS	TELEPHONE/FAX NO./EMAIL/WEBSITE
Mr Jester-Kim Foreign Business Department Manager	E_MLX Co. Ltd Ssangyong Research No.2 Lab Sinseong-Dong 100 Yusong-Gu, Daejoen 305-804, Korea (ROK)	Tel. No.: +82 42 865 1893 Fax No.: +82 42 865 1884 Email: Jester-kim@emlx.co.kr
Mr C G Kim Managing Director	Korean Ocean Development Co. Ltd 2ND Fl, Dongbang Bldg, 25-4, 4 Ga Jungang-Dong, Jung-Gu, Busan, South Korea	Tel. No.: +82 514 66 0760 Fax No.: +82 514 65 9345 Email: sales@chartkorea.com Website: http://www.chartkorea.com
Mr Kjell Nodland	Jeppesen Norway A/S P.O Box 212 , N-4379 Egersund, Norway	Tel No.: +47 514 64 700 Fax No: +47 514 64 701 Email: enc@c-map.no Website : http://www.c-map.no
Ms Eva Hegland Sales, order and distributor support.	PRIMAR STAVANGER Lervigsveien 36, P.O Box 60, N-4001 Stavanger, Norway	Tel. No.: +47 51 93 9500 Fax No.: +47 51 93 9501 Email: sales@primar.org Website : http://www.primar-stavanger.org
Mrs Christine Trickett Product Manager	United Kingdom Hydrographic Office Admiralty Way, Taunton, Somerset TA1 2DN United Kingdom	Tel. No.: +44 (0)1823 337900 Fax No.: +44 (0)1823 284077 Emails: vargroup@ukho.gov.uk & christine.trickett@ukho.gov.uk Website: http://www.ukho.gov.uk

Agents for the Maritime and Port Authority of Singapore Publications

Agent's name : **DPM (Singapore) Pte Ltd**
Address : 1 Maritime Square #09-72, HarbourFront Centre,
Singapore 099253
Telephone : (65) 6270 4060
Fax No. : (65) 6276 3858
E-mail : sales@dpmsingapore.com.sg
Internet Web Site : <http://www.dpmsingapore.com.sg>

Agent's name : **E.W. Liner Charts & Publications Pte Ltd**
Address : 102F, Pasir Panjang Road, #08-01, Citilink Warehouse Complex,
Singapore 118530
Telephone : (65) 6323 0773
Fax No. : (65) 6323 0775
E-mail : ewliner@singnet.com.sg
Internet Web Site : <http://www.ewliner.com>

Agent's name : **Motion Smith**
Address : 15 Jalan Kilang Barat
#08-01/05 Frontech Centre,
Singapore 159357
Telephone : (65) 6220 5098
: (After office hours: 8163 9993)
Fax No. : (65) 6225 4902
E-mail : sales@motsmith.com
Internet Web Site : <http://www.motsmith.com>

HYDROGRAPHIC NOTE - Instructions

1. Mariners are requested to notify the Chief Hydrographer, Maritime and Port Authority of Singapore, when new or suspected dangers to navigation are discovered, changes are observed in aids to navigation or where corrections to nautical publications may be necessary. Reports, which cannot be confirmed or are lacking in certain details should not be withheld.
2. Any ambiguities of time, positioning and depth should be stressed and any firm expectation of being able to check the information provided on a following voyage should be mentioned.
3. Mariners using satellite position fixing systems, eg. GPS, should provide details of equipment and datum used (where applicable). Where bearings (true or magnetic) are taken visually or by radar to fix a position, it should include more than two objects in order to provide a check on its accuracy. A position may also be defined by bearing and distance from a conspicuous object eg. beacon, lighthouse etc.
4. The note should include a tracing or a digital image of the chart used and the details should be clearly marked.
5. Echo sounders frequently register greater depths than the advertised maximum depth for the equipment, eg. a trace appearing at 50 metres may be in fact be 550 metres or even 1050 metres for equipment whose maximum depth is 500 metres. Erroneous depths caused by 2nd transmission error can usually be recognised by the following:
 - (a) the tracing being weaker than normal for the depth registered,
 - (b) the trace appearing to pass through the transmission line,
 - (c) the feathery nature of the trace.
6. An acknowledgement of receipt will be sent. When a Notice to Mariners is issued, the sender's vessel or name is quoted as the source unless the same information is also received in foreign Notices to Mariners.
7. Reports of shoals, uncharted dangers and defects in aids to navigation may also be made to the appropriate Singapore Port Operations Control Station on VHF Channels 10, 12, 14, 68 or 73.

HYDROGRAPHIC NOTE

To:

Chief Hydrographer
Hydrographic Department
Maritime and Port Authority of Singapore
460 Alexandra Road PSA Building #20-00
Singapore 119963

Tel : (65) 6375 1227
Fax : (65) 6278 7646
Email : hydrographic@mpa.gov.sg

Sender's Contact Details :

Date : _____
Name of Vessel : _____
Address of Sender : _____
Tel : _____ Fax : _____
Email : _____

Nature of Observation :

General Location : _____
Subject : _____
Position : Lat. _____ Long. _____
Charts Used : _____
Date & Time of Observation : _____
Details : _____

Equipment Used :

Type of Position Fixing : _____ GPS / DGPS _____ Others : _____
Type of Echo Sounder : _____

Name and Signature : _____

Ship's/Company's stamp : _____