



SINGAPOREAN NOTICES TO MARINERS

SECTION	CONTENT	Page
I	Index of Charts & Publications	31
II	New Publications	34
	Notices to Mariners and Chart Corrections	38
	Temporary and Preliminary Notices	39
III	Navigational Information	41
	Amendments to Publications	42
IV	Reprint of Radio Navigational Warnings	44
V	Reprint of Admiralty Notices to Mariners for Dual Badged Charts	45

The monthly Notices to Mariners contain corrective information affecting charts published by the Hydrographic Department, Maritime and Port Authority of Singapore. The information contained in these Notices should be updated on the charts affected. Notices under Section II apply only to the particular Singaporean Chart(s) indicated.

Mariners are requested to notify the Chief Hydrographer, Maritime and Port Authority of Singapore, immediately on the discovery of new dangers or suspected dangers to navigation and of changes or defects in aids to navigation. See Hydrographic Note on back page.

The monthly Singaporean Notices to Mariners can be accessed directly from the MPA website:
[http://www.mpa.gov.sg/sites/port_and_shipping/circulars_and_notices/singapore_notices_to_mariners\(ntm\).page](http://www.mpa.gov.sg/sites/port_and_shipping/circulars_and_notices/singapore_notices_to_mariners(ntm).page)

This service is offered free of charge.

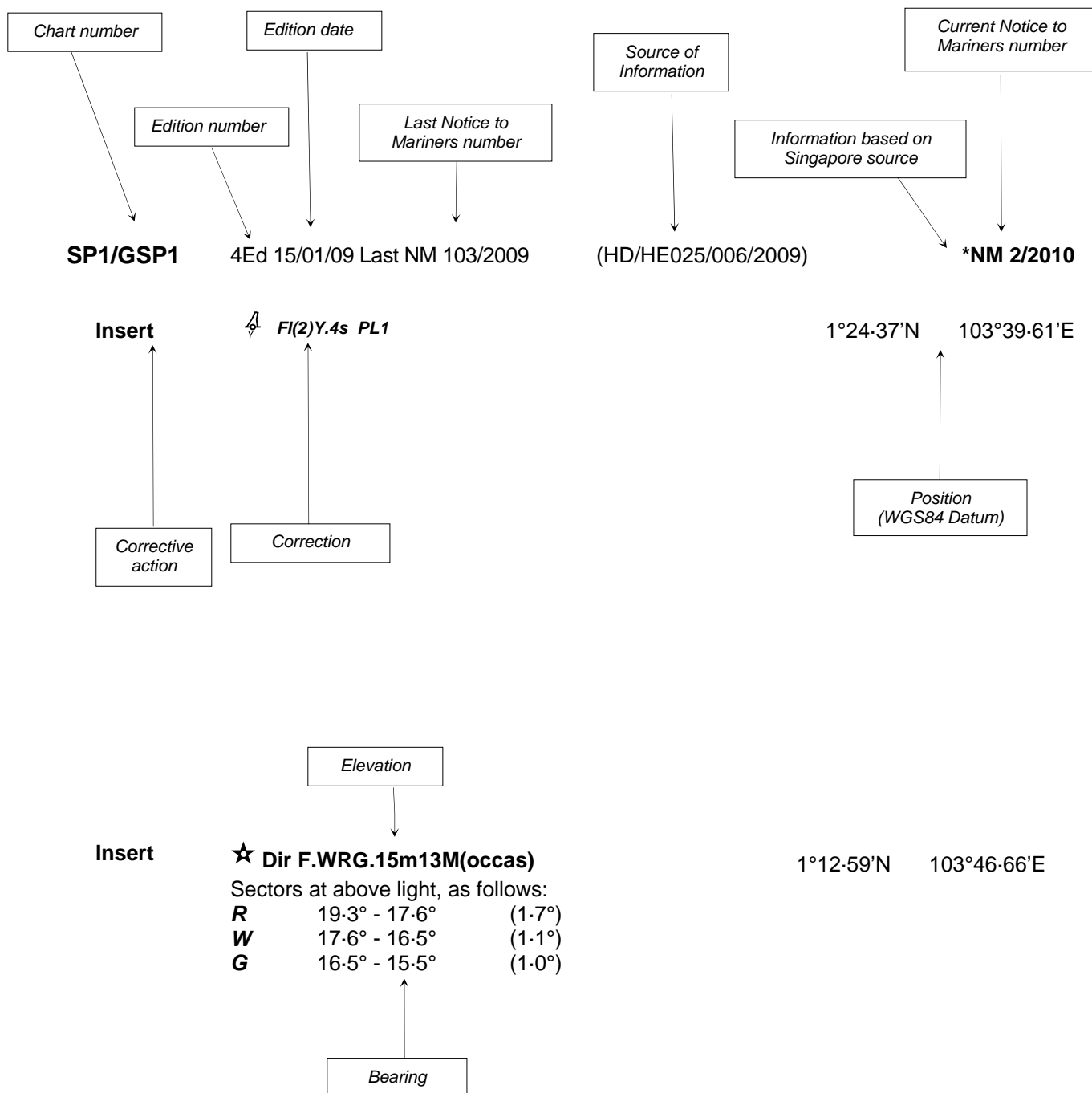
The Chief Hydrographer of
 Maritime and Port Authority of Singapore
 wishes all users of Singaporean and Dual Badged Charts

**A HAPPY LUNAR NEW YEAR
 and
 A SAFE VOYAGE**

Hydrographic Department
 Maritime and Port Authority of Singapore
 460 Alexandra Road
 PSA Building #20-00
 Singapore 119963
 Tel: (65) 6375 1227
 Fax: (65) 6278 7646

EXPLANATION OF FORMAT

The elements of a typical chart correction are explained below.



Notes:

- a) Notice to Mariners number followed by:
 - T** indicates a Temporary Notice (eg. ***NM 1T/2010**).
 - P** indicates a Preliminary Notice (eg. ***NM 3P/2010**).
- b) Bearings are true reckoned clockwise from 000° to 359° ; those relating to lights are from seaward.
- c) Heights and elevations are above Mean High Water Springs.

I
INDEX OF CHARTS AND PUBLICATIONS

DESCRIPTION	NOTICE NO.	PAGE NO.
Index of Singaporean Charts	-	31
Index of Dual Badged Charts	-	32
Index of Singapore Electronic Navigational Charts (ENC)	-	33
New Publication "SINGAPORE TIDE TABLES YEAR 2010"	-	34
New Publication "SINGAPORE PORT INFORMATION 2010/2011"	-	35
New Edition Dual Badged Chart	-	36
New Edition Singaporean Chart	-	37
Singaporean Chart 200	11	38
Singaporean Chart 201	11	38
Singaporean Chart 202	*12	38
Singaporean Chart 502	*12	38
Hydrographic Survey Work – Malacca Strait	*13T	39
Submarine Cable Repair Work - Singapore Strait	*14T, 15T	39, 40
Port Marine Notices	*16	41
Singaporean Print-On-Demand (POD) Charts	*17	41
Amendments to Publications	*18	42, 43
Reprint of Radio Navigational Warnings	-	44
Reprint of Admiralty Notices to Mariners for Dual Badged Charts	-	45
Singapore Electronic Navigational Charts (ENC) Distributors	-	46, 47
Agents for the Maritime and Port Authority of Singapore Nautical Charts and Publications	-	47

* Denotes information are based on Singapore source.

I

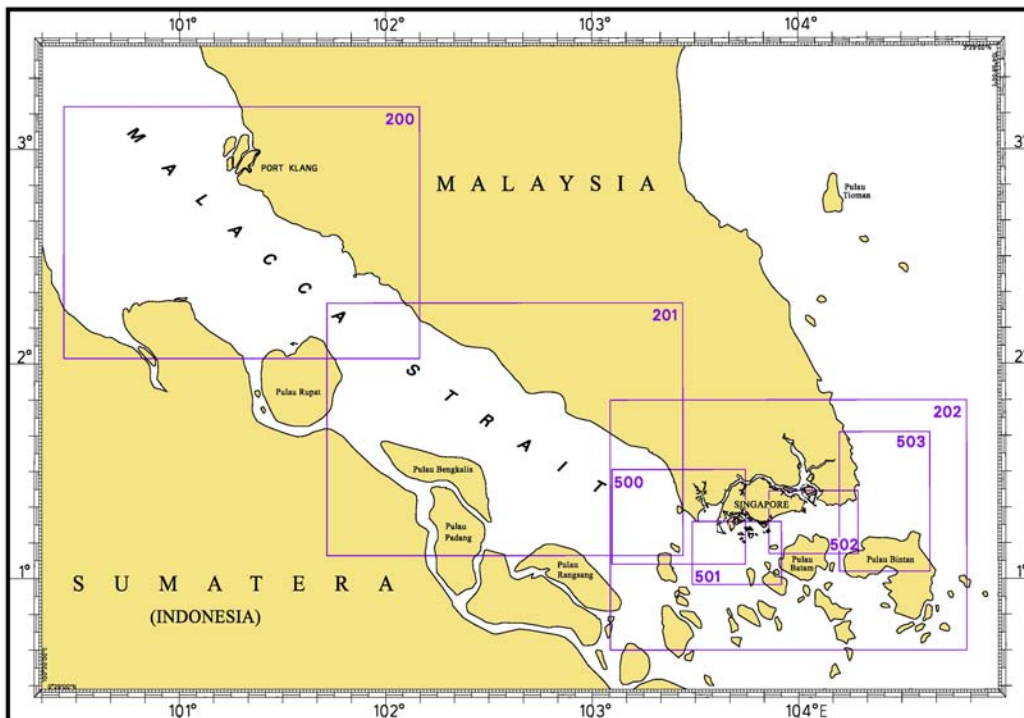
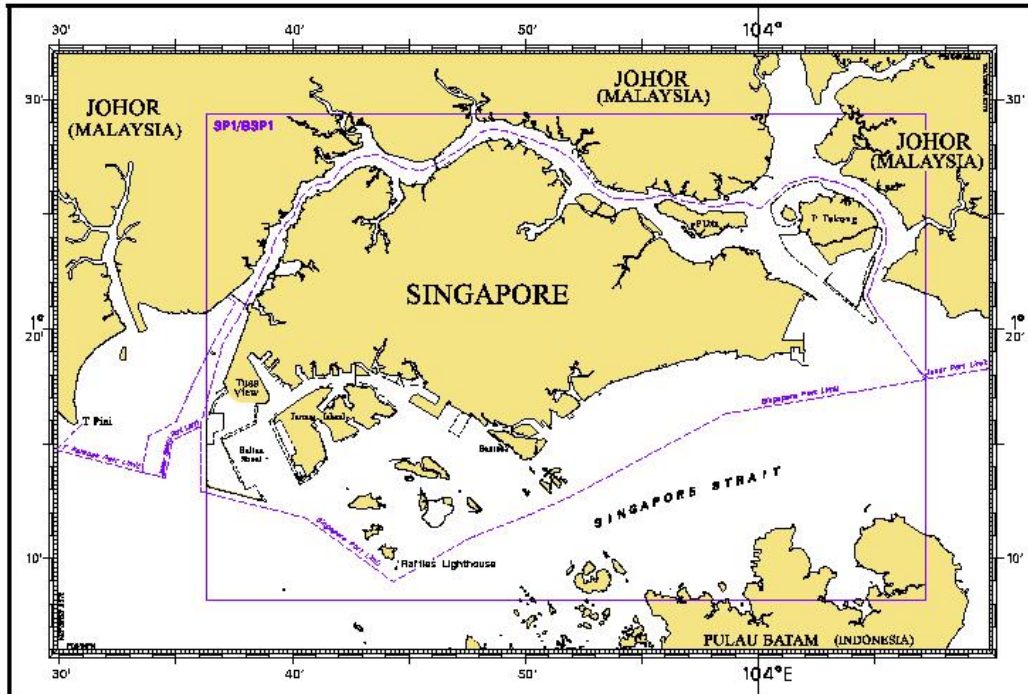
INDEX OF CHARTS AND PUBLICATIONS

NOTICE NO.	DESCRIPTION	PAGE NO.	NOTICE NO.	DESCRIPTION	PAGE NO.
-	Index of Singaporean Charts	31	-	Singapore Electronic Navigational Charts (ENC) Distributors	46, 47
-	Index of Dual Badged Charts	32	-	Agents for the Maritime and Port Authority of Singapore Nautical Charts and Publications	47
-	Index of Singapore Electronic Navigational Charts (ENC)	33			
-	New Publication "SINGAPORE TIDE TABLES YEAR 2010"	34			
-	New Publication "SINGAPORE PORT INFORMATION 2010/2011"	35			
-	New Edition Dual Badged Chart	36			
-	New Edition Singaporean Chart	37			
11	200, 201	38			
*12	202, 502	38			
*13T	Hydrographic Survey Work - Malacca Strait	39			
*14T, 15T	Submarine Cable Repair Work – Singapore Strait	39, 40			
*16	Port Marine Notices	41			
*17	Singaporean Print-On-Demand (POD) Charts	41			
*18	Amendments to Publications	42, 43			
-	Reprint of Radio Navigational Warnings	44			
-	Reprint of Admiralty Notices to Mariners for Dual Badged Charts	45			

* Denotes information are based on Singapore source.

I INDEX OF CHARTS AND PUBLICATIONS

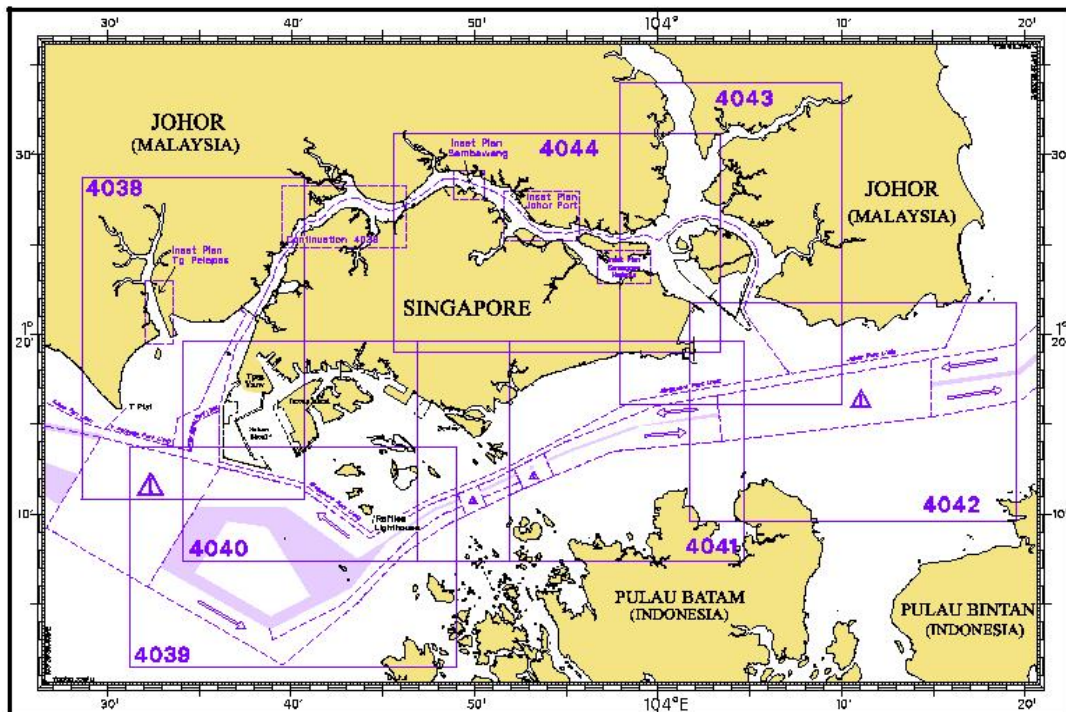
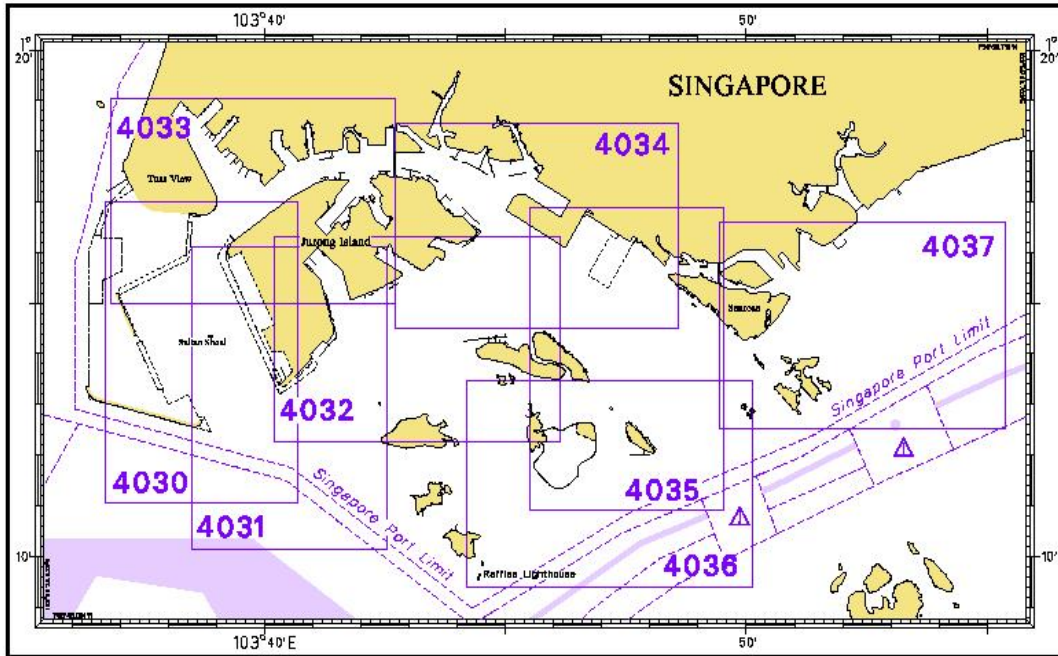
INDEX OF SINGAPOREAN CHARTS



Notes:
 Updated SINGAPOREAN Charts are available through our Print-On-Demand (POD) Chart Service. For more information, refer to Section III – Navigational Information and these charts can be purchased from our authorised Chart Agents:
 DPM (Singapore) Pte Ltd, E.W. Liner Charts & Publications Pte Ltd and Motion Smith.

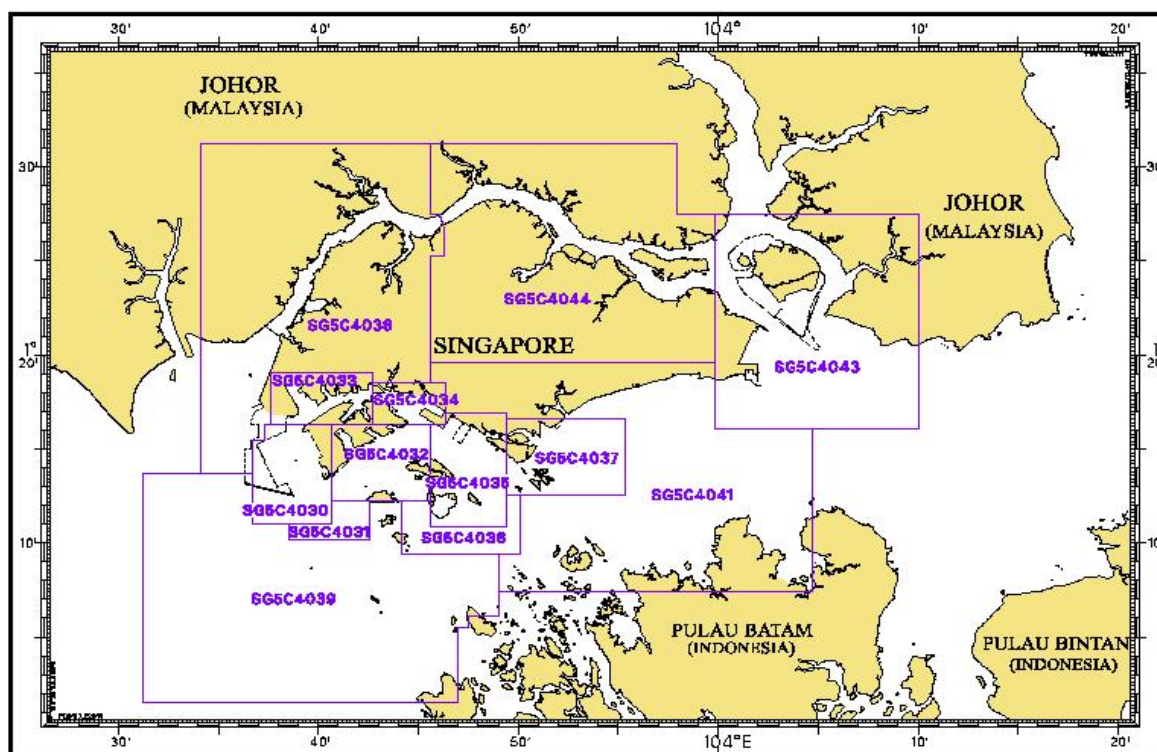
I INDEX OF CHARTS AND PUBLICATIONS

INDEX OF DUAL BADGED CHARTS



I INDEX OF CHARTS AND PUBLICATIONS

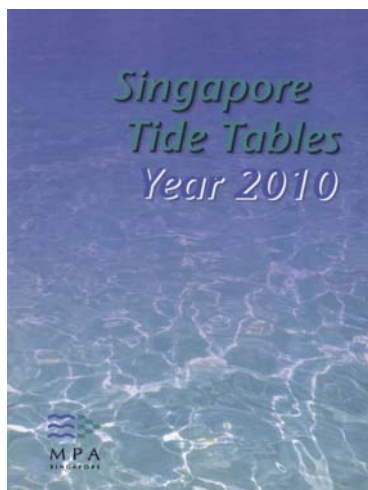
INDEX OF SINGAPORE ELECTRONIC NAVIGATIONAL CHARTS (ENC)



INDEX OF SINGAPORE ENC

ENC Name	ENC Title	Latitude	Longitude
SG5C4030	West Jurong Anchorages and Temasek Fairway	1°11.050'N 1°16.300'N	103°36.700'E 103°40.640'E
SG5C4031	Western Approaches to Jurong Island	1°10.150'N 1°12.250'N	103°38.500'E 103°42.530'E
SG5C4032	Sinki Fairway	1°12.250'N 1°16.300'N	103°40.640'E 103°45.580'E
SG5C4033	Tuas Bay, West Jurong Channel and Pesek Basin	1°16.300'N 1°19.050'N	103°37.600'E 103°42.700'E
SG5C4034	East Jurong Channel, Pasir Panjang Terminal and West Keppel Fairway	1°16.300'N 1°18.550'N	103°42.700'E 103°46.356'E
SG5C4035	Western Anchorages, Jong Fairway and Cruise Bay	1°10.900'N 1°16.900'N	103°45.580'E 103°49.425'E
SG5C4036	Raffles Lighthouse to The Sisters	1°09.400'N 1°12.520'N	103°44.200'E 103°50.130'E
SG5C4037	Keppel Harbour, Tanjong Pagar Terminal and Approaches	1°12.520'N 1°16.590'N	103°49.425'E 103°55.340'E
SG5C4038	Johor Strait – Western Part	1°13.700'N 1°31.200'N	103°34.100'E 103°46.300'E
SG5C4039	Western Approaches to Main Strait	1°01.500'N 1°13.700'N	103°31.200'E 103°49.000'E
SG5C4041	Pulau Sebarok to Changi	1°07.400'N 1°19.600'N	103°45.600'E 103°04.700'E
SG5C4043	Kuala Johor and Sungai Johor	1°16.100'N 1°27.500'N	103°59.800'E 104°10.000'E
SG5C4044	Johor Strait – Eastern Part	1°19.600'N 1°31.200'N	103°45.600'E 103°59.800'E

II NEW PUBLICATIONS



SINGAPORE TIDE TABLES YEAR 2010

Summary of Publication

- (a) This 239-page book contains Tidal Height and Tidal Stream Predictions covering stations in Singapore Port Waters and selected stations along the Straits of Malacca and Singapore.

The predictions consist of 5 main segments to facilitate easy reference:

- High and Low Water Predictions
- Hourly Tidal Height Predictions
- Hourly Tidal Stream Predictions
- Maximum and Slack Tidal Stream Predictions
- Malacca Strait – High and Low Water Predictions

- (b) The presentation of the predictions is enhanced with colour codes so as to differentiate the various states of tidal heights, eg falling or rising tide and tidal stream directions. Moon phases, eg full and new moon, are also included in each calendar month to complement the prediction values.
- (c) The tidal heights are given in metres above Chart Datum (CD). The CD is the datum of soundings shown on the Singaporean Charts and Dual Badged Charts covering the area. A table showing the various tidal levels eg. Mean High Water Springs, Mean Low Water Springs etc, at various stations with reference to CD is also included in this publication.

To Whom Will It Be Useful?

Mariners, shipping community, port users and other interested users.

Frequency of Publication

Annually.

Cost of Publication

To be advised by Chart Agents.

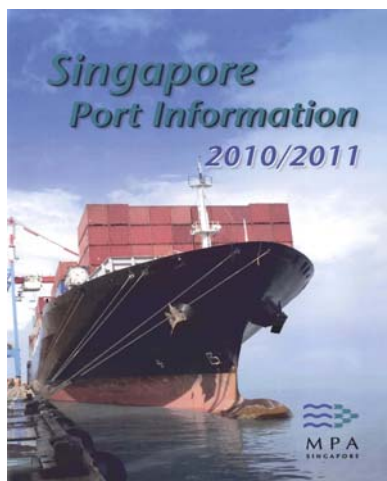
Order Enquires:

This publication is available from the following Chart Agents:

- 1) DPM (Singapore) Pte Ltd
- 2) E.W. Liner Charts & Publications Pte Ltd
- 3) Motion Smith

(Please refer to Page 47 for details.)

II NEW PUBLICATIONS



SINGAPORE PORT INFORMATION 2010/2011

Summary of Publication

This publication contains Port Information such as:

- 1) Routing System in the Straits of Malacca and Singapore.
- 2) Guide to VHF Communication, Pilotage, and Navigational Channels – Controlling Depths.
- 3) List of Aids to Navigation.
- 4) Port Facilities – Wharves, Berths, Docks and Berth Operators' Information.
- 5) IALA Maritime Buoyage System.
- 6) Index and Chart Catalogue of Singaporean Charts and Dual Badged Charts.

To Whom Will It Be Useful?

Mariners, shipping community, port users and other interested users.

Frequency / Year of Publication

Once every 2 years.

Cost of Publication

To be advised by Chart Agents.

- 1) DPM (Singapore) Pte Ltd
 - 2) E.W. Liner Charts & Publications Pte Ltd
 - 3) Motion Smith
- (Please refer to Page 47 for details.)

II NEW PUBLICATIONS

NEW EDITION DUAL BADGED CHARTS TO BE PUBLISHED ON 4TH MARCH 2010

Chart Number	:	4032
Title	:	Port of Singapore Sinki Fairway
Coverage	:	Lat 01° 12.25' N 01° 16.30' N Long 103° 40.20' E 103° 46.13' E
Scale	:	1: 10 000
Date Published	:	4 th March 2010
Size of Chart	:	1100.0 x 746.4 mm
Remarks	:	This new edition includes updated survey covering these areas: - <ul style="list-style-type: none"> • North and West of Pulau Bukom • Part of Banyan Basin • Sakra Basin • East Jurong Channel • Selat Pauh • Selat Sinki • Selat Pandan • Approaches to VLCC Jetties

This existing chart of the same number published on 22nd May 2008 is superseded.

Chart Number	:	4033
Title	:	Port of Singapore Tuas Bay, West Jurong Channel and Pesek Basin
Coverage	:	Lat 01° 15.00' N 01° 19.05' N Long 103° 36.80' E 103° 42.70' E
Scale	:	1: 10 000
Date Published	:	4 th March 2010
Size of Chart	:	1094.4mm x 746.4mm
Remarks	:	This new edition includes updated survey covering these areas: - <ul style="list-style-type: none"> • Temasek Fairway • West Jurong Channel • Benoi Basin • Northern Tuas Basin • Gul Basin • Approaches to Tuas Prohibited area • East Samulun Basin

This existing chart of the same number published on 22nd May 2008 is superseded.

II NEW PUBLICATIONS

NEW EDITION SINGAPOREAN CHARTS PUBLISHED ON 21ST JANUARY 2010

Chart No.	:	SP1
Title	:	Anchorage and Aids to Navigation
Coverage	:	Lat 1° 08-20'N 1° 29-40' N
	:	Long 103° 35-70'E 104° 07-20' E
Scale	:	1: 60 000
Date Published	:	21 st January 2010
Size of Chart	:	973.9 x 651.2 mm
Remarks	:	This new edition includes latest updates on : -
		<ul style="list-style-type: none"> • New topography on eastern Jurong Island. • Pulau Ular Jetty and Oil Tanking Jetty (Jurong Island). • Approaches to Pasir Panjang Reclamation Area. • Submarine cables from Tanah Merah and Changi Ferry Terminal. • Depth contours covering the entire chart.

This new edition supersedes the earlier edition published on 15th January 2009.

Chart No.	:	GSP1
Title	:	Anchorage and Aids to Navigation (with area reference)
Coverage	:	Lat 1° 08-20'N 1° 29-40' N
	:	Long 103° 35-70'E 104° 07-20' E
Scale	:	1: 60 000
Date Published	:	21 st January 2010
Size of Chart	:	973.9 x 651.2 mm
Remarks	:	This new edition includes latest updates on : -
		<ul style="list-style-type: none"> • New topography on eastern Jurong Island. • Pulau Ular Jetty and Oil Tanking Jetty (Jurong Island). • Approaches to Pasir Panjang Reclamation Area. • Submarine cables from Tanah Merah and Changi Ferry Terminal. • Depth contours covering the entire chart.

This new edition supersedes the earlier edition published on 15th January 2009.

II
NOTICES TO MARINERS AND CHART CORRECTIONS

200 2Ed 30/11/05 Last NM 3/2010 Royal Malaysian Navy Notices to
Mariners No. 11/179/2009 **NM 11/2010**

Substitute  **Wk** for depth *17₉* enclosed by 20m contour 2°16·00'N 101°47·55'E

201 3Ed 5/10/07 Last NM 112/2009 Royal Malaysian Navy Notices to
Mariners No. 11/179/2009 **NM 11/2010**

Substitute  **Wk** for depth *17₉* enclosed by 20m contour 2°16·00'N 101°47·55'E

202 6Ed 24/09/09 Last NM 113/2009 (HD/HE025/001/2010) ***NM 12/2010**

Substitute range of light **5M** for 15M 1°17·87'N 103°54·35'E

502 4Ed 25/09/08 Last NM 88/2009 (HD/HE025/001/2010) ***NM 12/2010**

Substitute range of light **5M** for 15M 1°17·87'N 103°54·35'E

II TEMPORARY AND PRELIMINARY NOTICES

*(NM 13T/2010) HYDROGRAPHIC SURVEY WORK – MALACCA STRAIT

Remark : Hydrographic survey work by GEMS Survey Limited.
Date : With effect from 9th February 2010 for a period of 50 days.

1. The survey vessel "Arifah Adni" will be conducting a hydrographic survey in an area bounded by the following positions (WGS84).

3°02-50'N	100°48-83'E to
2°52-50'N	101°00-00'E to
2°48-20'N	101°07-83'E to
2°43-00'N	101°05-40'E to
2°54-83'N	100°42-75'E

2. Chart affected : 200
3. Mariners are advised to keep a lookout and give a wide berth.

Source : HD/DB67/001/2010

*(NM 14T/2010) SUBMARINE CABLE REPAIR WORK – SINGAPORE STRAIT

Remark : Repair of TIISCS submarine cable.
Date : With effect from 7th January to 8th February 2010.

1. Cable repairs are in progress within the Vessel Traffic Information Service (VTIS) Sector 7, 8, 9 at the following positions (WGS84).

- a) 1°09-006'N 103°26-960'E
- b) 1°10-232'N 103°50-680'E

2. Charts affected : SP1/GSP1, 202, 500 and 501
3. Mariners are advised to keep a lookout and give a wide berth.

Source : HD/DB67/013/2009

II
TEMPORARY AND PRELIMINARY NOTICES

(NM 15T/2010) SUBMARINE CABLE REPAIR WORK – SINGAPORE STRAIT

Remark : Repair of submarine cable, APCN System 2, Segment B11 Repair Operation No. 13.
Date : With effect from 11th January 2010 to 11th February 2010.

1. Cable repairs are in progress within the working area bounded by the following positions (WGS84).

1°19-49'N	104°14-49'E to
1°19-68'N	104°15-55'E to
1°19-15'N	104°15-67'E to
1°18-96'N	104°14-62'E

2. Charts affected : 202, 502 and 503

3. Mariners are advised to keep a lookout and give a wide berth.

Source : Peninsular Malaysia Marine Department Notice to Mariners No. 1T/2010.

III NAVIGATIONAL INFORMATION

*(NM 16/2010) PORT MARINE NOTICES

The following PMNs have been shortlisted, as they would be of particular interest to mariners.

These notices can be accessed directly from MPA website:

http://www.mpa.gov.sg/sites/port_and_shipping/circulars_and_notices/port_marine_notices.page

PMN No.	Subject
173/2009	Sand mining at Area 1 and dumping at Pasir Panjang Terminal Project Working Area.
174/2009	Dredging works at East Keppel Fairway and its vicinity.
175/2009	Soil investigation works at Sembawang Shipyard.
177/2009	Soil investigation works at Banyan Basin, Jurong Island.
179/2009	Reclamation of Jurong Island Phase 4 and Tuas View Extension.
184/2009	Repair works at Vopak Penjuru Terminal Berth 2.
187/2009	Reclamation work at Tuas View Extension.
188/2009	Reclamation of Jurong Island Phase 4.
189/2009	Construction of sea wall at Marina Wharf.

*(NM 17/2010) SINGAPOREAN PRINT-ON-DEMAND (POD) CHARTS

Print-On-Demand (POD) Charts are the most up-to-date paper nautical charts printed for navigational use. These nautical charts are produced in accordance with the International Hydrographic Organisation (IHO) charting specifications. These official nautical charts are continually updated to the latest Notices to Mariners before they are printed and sold to users.

These POD Charts include SP1/GSP1, 200, 201, 202, 500, 501, 502 and 503.

BENEFITS TO OUR CUSTOMERS

Convenience

Customers need not make numerous hand corrections to the nautical charts before use. In addition the updated POD Charts are more accurate and reliable than offset printed charts with hand corrections.

Clarity

Clarity in the presentation of updated information as compared to lithographic printed charts, where in some cases there are several overlapping corrections over existing information.

Coverage

The POD Charts cover the Malacca and Singapore Straits, from One Fathom Bank to Horsburgh Lighthouse.

III AMENDMENTS TO PUBLICATIONS

*(NM 18/2010) UPDATING OF PUBLICATION "SINGAPORE PORT INFORMATION 2010/2011"

1. Page 96

DEPTHS OF NAVIGATIONAL CHANNELS AND FAIRWAYS

Insert the following :

LOCATIONS		DEPTHS (m)		REMARKS
Delete	Insert	Delete	Insert	
Cruise Bay (Berth CC01 to CC031)	Cruise Bay (Berth CC01 to VC01)	10.1	10.0	-

LOCATIONS		DEPTHS (m)	REMARKS
Sinki Fairway	Selat Sinki (dredged channel)	18.0	Note: A high spot of 11.4m exists approximately 200.2° x 616m from Pandan Beacon.
	Selat Pandan	15.0	Note: A high spot of 14.8m exists approximately 219.2° x 469m from Pandan Beacon.
East Jurong Fairway	Deep water Channel	16.4	Note: 14.9m high spot off Seraya Buoy.
	Out bound channel	12.8	-

Delete the following :

LOCATIONS	DEPTHS (m)	REMARKS
Delete	Delete	Delete
Sinki Fairway (dredged channel)	18.0	Up to Tankstore at Pulau Busing
Sinki Fairway	11.6	Pulau Busing to Cyrene Beacon
Selat Pandan	15.0	

Source : Master Berth List

2. Page 127

CHARACTERISTICS OF AIDS TO NAVIGATION

Insert the following :

Name of Beacon	Light Characteristic	
	Delete	Insert
Amber	Fl.Y.2,5s18m15M	Fl.Y.2,5s18m5M

Source : HD/HE025/001/2010

III
AMENDMENTS TO PUBLICATIONS

3. Page 138 – Item 1

WHARVES AND BERTHS

TANJONG PAGAR TERMINAL (PSA SINGAPORE TERMINALS) (1°16.0'N, 103°51.0'E)

Insert the following :

Berth	Depth Alongside (Year Surveyed)	
	Delete	Insert
T7	12.4m (2002)	12.4m (2009)

Source : HD/HY Code B00109309

Berth	Length of Berth		Depth Alongside (Year Surveyed)	
	Delete	Insert	Delete	Insert
T8	213m	209m	8.9m (2002)	10.1m (2009)

Source : HD/HY Code B00111109

4. Page 139 – Item 2

Insert the following :

KEPPEL TERMINAL (PSA SINGAPORE TERMINALS) (1°16.0'N, 103°50.0'E)

Berth	Length of Berth		Depth Alongside (Year Surveyed)	
	Delete	Insert	Delete	Insert
K9	222m	218m	11.0m (2002)	11.0m (2009)
K10	222m	221m	-	-

Source : HD/HY Code B00111109 and B00107008

IV
REPRINT OF RADIO NAVIGATIONAL WARNINGS

TT173

VESSELS IN EAST JOHOR STRAIT ARE ADVISED TO NAVIGATE WITH CAUTION WHEN NEAR THE PROJECT AREAS OFF PULAU TEKONG, PULAU SERANGOON, CHANGI AND MALANG PAPAN AS SHALLOW WATER AREAS EXIST. VESSELS ARE ADVISED TO KEEP LOOKOUT FOR TUGS AND BARGES NAVIGATING NEAR THE PROJECT AREAS AND PASSENGER FERRIES CROSSING BETWEEN CHANGI AND PULAU TEKONG AND VICINITY OF PASIR GUDANG.

TT619

DREDGER QUEEN OF PENTA OCEAN IS CONDUCTING DREDGING OPERATIONS IN POSITIONS BOUNDED BY COORDINATES:

01°15.827' N 103°57.737' E

01°14.865' N 103°58.134' E

01°13.298' N 103°54.401' E

01°13.884' N 103°54.131' E

VESSELS ARE ADVISED TO PROCEED AT SAFE SPEED AND TO GIVE A WIDE BERTH.

TT753

A SMALL WOODEN CARGO BOAT 10M IN LENGTH SUNK AT 01°15.73'N 103°32.1'E.

TT851

DREDGER QUEEN OF PENTA OCEAN WILL BE CONDUCTING SAND MINING OPERATIONS EXTENDS FROM SINGAPORE PORT LIMITS INTO THE WESTBOUND LANE OF TSS OFF PEBGB WITHIN THE SINGAPORE STRAIT FROM 26 DEC 2009/0700HRS UFN ALL VESSELS PASSING THE VICINITY ARE ADVISED TO KEEP A GOOD LOOK OUT AND GIVE A WIDE BERTH.

TT854(MSG AMENDED ON 121310UTC JAN 10)

DANGER TO NAVIGATION

A VESSEL HAD SUNK IN POSITION 01°26.3'N 104°38.5'E EAST OF HORSBURGH.

FOUR CREWS MISSING. ALL VESSELS TO KEEP A SHARP LOOKOUT AND

REPORT SIGHTINGS TO SPOCC AT TEL 65-6226 5539 FAX:6227 9971

EMAIL : POCC@MPA.GOV.SG.

TT856 (POSN AMENDED AT 142258UTC)

AN UNLIT BARGE IS REPORTED TO BE DRIFTING IN POSN 01°16.85'N 104°09.73'E.

ALL VESSELS ARE ADVISED TO KEEP A SHARP LOOK OUT AND NAVIGATE WITH CAUTION.

ISSUED BY SINGAPORE PORT OPERATIONS CONTROL CENTRE
(as at 24th January 2010)

V
**REPRINT OF ADMIRALTY NOTICES TO MARINERS
 FOR DUAL BADGED CHARTS**

These notices can be accessed directly from UKHO Website:

<http://www.ukho.gov.uk/ProductsandServices/MaritimeSafety/Pages/NMPublic.aspx>

227* SINGAPORE – Keppel Harbour and East Jurong Channel – Dredged depths.

Source: Maritime and Port Authority of Singapore

Chart 4034 [*previous update 6932/2009*] WGS84 DATUM

Amend dredged depth to, **15.3m (2009)**, centred on: 1° 17'·670N., 103° 42'·953E.

Chart 4037 [*previous update 6932/2009*] WGS84 DATUM

Amend dredged depth to, **12.1m (2009)**, centred on: 1° 16'·044N., 103° 50'·184E.
 dredged depth to, **11.0m (2009)**, centred on: 1° 16'·042N., 103° 50'·088E.
 dredged depth to, **13.6m (2009)**, centred on: 1° 16'·275N., 103° 51'·105E.

392* SINGAPORE – Changi East, Southwards – legend. Cautionary note.

Source: Maritime and Port Authority of Singapore

Chart 4041 [*previous update 6932/2009*] WGS84 DATUM

Insert legend, **Dredged Area (see Note)**, centred on: 1° 15'·58N., 103° 59'·85E.
 Substitute the accompanying note, **DREDGING AREAS**, centred on: 1° 18'·96N., 103° 56'·22E.

To accompany Notice to Mariners 392/10

On Chart 4041

DREDGING AREAS

Dredging operations will be carried out in the westbound lane of the Traffic Separation Scheme until December 2011. Navigational warning broadcasts will be made by the Vessel Traffic Service of Singapore (VTIS) to inform vessels of the dredging operations. Mariners are advised to navigate with caution, proceed at a safe speed when approaching the areas and keep well clear of the working vessels. For further details see Singapore Notices to Mariners No. 04/67P/2008 and No. 12/115T/2009 at [http://www.mpa.gov.sg/sites/port_and_shipping/circulars_and_notices/singapore_notice_to_mariner\(ntrn\).page](http://www.mpa.gov.sg/sites/port_and_shipping/circulars_and_notices/singapore_notice_to_mariner(ntrn).page)

Updated to Admiralty Notices to Mariners Edition No. 4 of 2010 dated 28th January 2010.

SINGAPORE ELECTRONIC NAVIGATIONAL CHARTS (ENC) DISTRIBUTORS
Please approach any of the appointed distributors to purchase the Singapore ENC.

DISTRIBUTOR	ADDRESS	TELEPHONE/FAX NO./EMAIL/WEBSITE
DPM (Singapore) Pte Ltd	1 Maritime Square, #09-72 HarbourFront Centre, Singapore 099253	Tel. No.: +65 6270 4060 Fax No.: +65 6276 3858 Email: sales@dpmsingapore.com.sg Website: http://www.dpmsingapore.com.sg
Kelvin Hughes(S) Pte Ltd	8 Pandan Avenue #02-00, Singapore 609384	Tel. No.: +65 6545 9880 ext.24 Fax No.: +65 6545 8892 Email: hamzah.akhbar@khsing.com Website: http://www.kelvinhughes.co.uk
Maritime Information Systems (MARIS)	52, Telok Blangah Road #01-06, Telok Blangah Centre, Singapore 058809	Tel. No.: +65 6276 1472 Fax No.: +65 6276 1473 Email: support@maris.sg Website: http://www.maris.no
Maritime Information System AS (MARIS)	Danholmen 25, 3128 Notteroy, Norway	Tel. No.: +47 33 30 42 50 Fax No.: +47 33 30 42 51 Email: roar.moe@maris.no Website: http://www.maris.no
Motion Smith	15 Jalan Kilang Barat #08-01/05 Frontech Centre Singapore 159357	Tel. No.: +65 6220 5098 Fax No.: +65 6225 4902 Email: sales@motsmith.com Website: http://www.motsmith.com
Transas Marine Pacific Pte Ltd	750C Chai Chee Road, #04-07, Technopark@Chai Chee, Singapore 469003	Tel. No.: +65 6443 3061 Fax No.: +65 6443 3025 Email: dominic@transas.com.sg Website: http://www.transas.com.sg
Vector Services Pte Ltd	15 West Coast Highway, #02-14A Pasir Panjang Building Singapore 117861	Tel. No.: +65 6777 3602 Fax No.: +65 6777 9203 Email: kwchoy@pacific.net.sg
Marine Press of Canada	640 Rue St-Paul Ouest, Suite 300 Montreal (QC) Canada, H3C1L9	Tel. No.: (514) 866 8342 Fax No.: (514) 866 9050 Email : sales@marinepress.com Website: http://www.marinepress.com
HanseNautic GmbH Bade & Hornig, Eckardt & Messtorff	Herrengaben 31 D-20459 Hamburg, Germany	Tel. No.: +49 40 374 811-32 Fax No.: +49 40 366 400 Email: wilde@hansenautic.de Website : http://www.HanseNautic.com
ChartWorld GmbH	Ruhrstrasse 90, D-22761 Hamburg, Germany	Tel. No.: +49 40 853 58 6940 Fax No.: +49 40 853 58 6949 Email: sales@chartworld.com Website : http://www.sevencs.com
Japan Hydrographic Association Electronic Charts Division	Daiichi Sogo Bldg, 6F 1-6-6, Hanedakuko, Ota-ku, Tokyo 144-0041, Japan	Tel. No.: +81 3 5708 7093 Fax No.: +81 3 5708 7094 Email: enc-support@jha.jp Website: http://www.jha.jp

SINGAPORE ELECTRONIC NAVIGATIONAL CHARTS (ENC) DISTRIBUTORS
Please approach any of the appointed distributors to purchase the Singapore ENC.

DISTRIBUTOR	ADDRESS	TELEPHONE/FAX NO./EMAIL/WEBSITE
E_MLX Co. Ltd	Ssangyong Research No.2 Lab Sinseong-Dong 100 Yusong-Gu, Daejoen 305-804, Korea (ROK)	Tel. No.: +82 42 865 1893 Fax No.: +82 42 865 1884 Email: Jester-kim@emlx.co.kr
Korean Ocean Development Co. Ltd	2ND Fl, Dongbang Bldg, 25-4, 4 Ga Jungang-Dong, Jung-Gu, Busan, South Korea	Tel. No.: +82 514 66 0760 Fax No.: +82 514 65 9345 Email: sales@chartkorea.com Website: http://www.chartkorea.com
Jeppesen Norway A/S	P.O Box 212 , N-4379 Egersund, Norway	Tel No.: +47 514 64 700 Fax No: +47 514 64 701 Email: enc@c-map.no Website : http://www.c-map.no
PRIMAR STAVANGER	Lervigsveien 36, P.O Box 60, N-4001 Stavanger, Norway	Tel. No.: +47 51 93 9500 Fax No.: +47 51 93 9501 Email: sales@primar.org Website : http://www.primar-stavanger.org
United Kingdom Hydrographic Office	Admiralty Way, Taunton, Somerset TA1 2DN United Kingdom	Tel. No.: +44 (0)1823 337900 Fax No.: +44 (0)1823 284077 Emails: vargroup@ukho.gov.uk & christine.trickett@ukho.gov.uk Website: http://www.ukho.gov.uk

**Agents for the Maritime and Port Authority of Singapore
Nautical Charts and Publications**

Agent's Name : **DPM (Singapore) Pte Ltd**
Address : 1 Maritime Square #09-72, HarbourFront Centre,
Singapore 099253
Telephone : (65) 6270 4060
Fax No. : (65) 6276 3858
E-mail : sales@dpmsingapore.com.sg
Internet Web Site : <http://www.dpmsingapore.com.sg>

Agent's Name : **E.W. Liner Charts & Publications Pte Ltd**
Address : 102F, Pasir Panjang Road, #08-01, Citilink Warehouse Complex,
Singapore 118530
Telephone : (65) 6323 0773
Fax No. : (65) 6323 0775
E-mail : ewliner@singnet.com.sg
Internet Web Site : <http://www.ewliner.com>

Agent's Name : **Motion Smith**
Address : 15 Jalan Kilang Barat
#08-01/05 Frontech Centre,
Singapore 159357
Telephone : (65) 6220 5098
: (After office hours: 8163 9993)
Fax No. : (65) 6225 4902
E-mail : sales@motsmith.com
Internet Web Site : <http://www.motsmith.com>

HYDROGRAPHIC NOTE - Instructions

1. Mariners are requested to notify the Chief Hydrographer, Maritime and Port Authority of Singapore, when new or suspected dangers to navigation are discovered, changes are observed in aids to navigation or where corrections to nautical publications may be necessary. Reports, which cannot be confirmed or are lacking in certain details should not be withheld.
2. Any ambiguities of time, positioning and depth should be stressed and any firm expectation of being able to check the information provided on a following voyage should be mentioned.
3. Mariners using satellite position fixing systems, eg. GPS, should provide details of equipment and datum used (where applicable). Where bearings (true or magnetic) are taken visually or by radar to fix a position, it should include more than two objects in order to provide a check on its accuracy. A position may also be defined by bearing and distance from a conspicuous object eg. beacon, lighthouse etc.
4. The note should include a tracing or a digital image of the chart used and the details should be clearly marked.
5. Echo sounders frequently register greater depths than the advertised maximum depth for the equipment, eg. a trace appearing at 50 metres may be in fact be 550 metres or even 1050 metres for equipment whose maximum depth is 500 metres. Erroneous depths caused by 2nd transmission error can usually be recognised by the following:
 - (a) the tracing being weaker than normal for the depth registered,
 - (b) the trace appearing to pass through the transmission line,
 - (c) the feathery nature of the trace.
6. An acknowledgement of receipt will be sent. When a Notice to Mariners is issued, the sender's vessel or name is quoted as the source unless the same information is also received in foreign Notices to Mariners.
7. Reports of shoals, uncharted dangers and defects in aids to navigation may also be made to the appropriate Singapore Port Operations Control Centre on VHF Channels 10, 12, 14, 68 or 73.

HYDROGRAPHIC NOTE

To:

Chief Hydrographer
Hydrographic Department
Maritime and Port Authority of Singapore
460 Alexandra Road PSA Building #20-00
Singapore 119963

Tel : (65) 6375 1227
Fax : (65) 6278 7646
Email : hydrographic@mpa.gov.sg

Sender's Contact Details :

Date :

Name of Vessel :

Address of Sender :

Tel : Fax :

Email :

Nature of Observation :

General Location :

Subject :

Position : Lat. Long.

Charts Used :

Date & Time of Observation :

Details :

.....

.....

Attachment :

Equipment Used :

Type of Position Fixing : GPS / DGPS Others :

Type of Echo Sounder :

Name and Signature :

Ship's/Company's stamp :