



## SINGAPOREAN NOTICES TO MARINERS

SECTION	CONTENT	Page
I	Index of Charts & Publications	34
II	New Publications	37
	Notices to Mariners and Chart Corrections	39
	Temporary and Preliminary Notices	41
III	Navigational Information	42
	Amendments to Publications	43
IV	Reprint of Radio Navigational Warnings	44
V	Reprint of Admiralty Notices to Mariners for Dual Badged Charts	45

The monthly Notices to Mariners contain corrective information affecting charts published by the Hydrographic Department, Maritime and Port Authority of Singapore. The information contained in these Notices should be updated on the charts affected. Notices under Section II apply only to the particular Singaporean Chart(s) indicated.

Mariners are requested to notify the Chief Hydrographer, Maritime and Port Authority of Singapore, immediately on the discovery of new dangers or suspected dangers to navigation and of changes or defects in aids to navigation. See Hydrographic Note on back page.

The monthly Singaporean Notices to Mariners can be accessed directly from the MPA website:  
[http://www.mpa.gov.sg/sites/port\\_and\\_shipping/circulars\\_and\\_notices/singapore\\_notices\\_to\\_mariners\(ntm\).page](http://www.mpa.gov.sg/sites/port_and_shipping/circulars_and_notices/singapore_notices_to_mariners(ntm).page)

This service is offered free of charge.

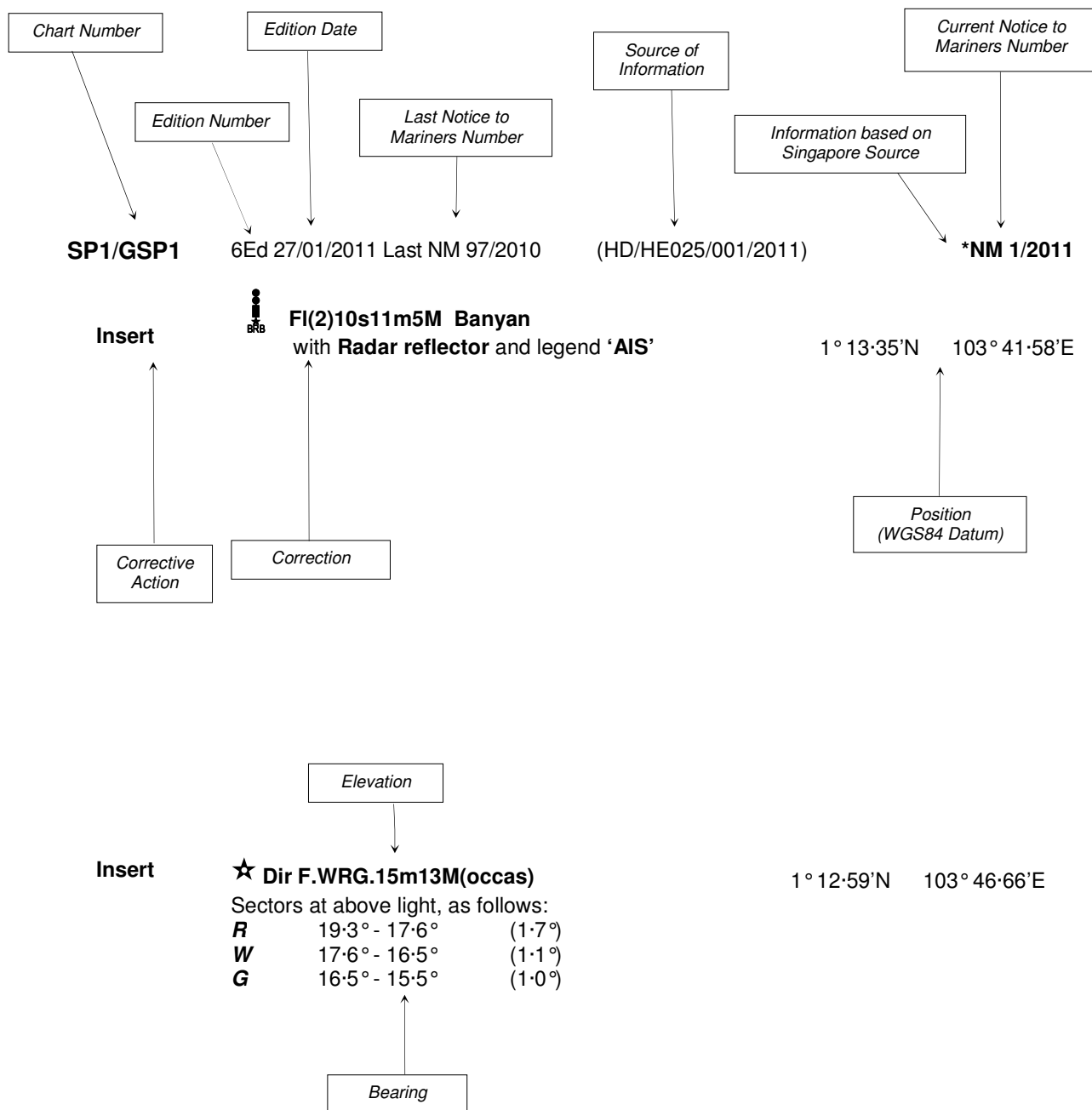
The Chief Hydrographer of  
Maritime and Port Authority of Singapore  
wishes all users of Singaporean and Dual Badged Charts

**A HAPPY LUNAR NEW YEAR**

Hydrographic Department  
Maritime and Port Authority of Singapore  
460 Alexandra Road  
PSA Building #20-00  
Singapore 119963  
Tel: (65) 6375 1227  
Fax: (65) 6278 7646

## EXPLANATION OF FORMAT

The elements of a typical chart correction are explained below.



**Notes:**

- a) Notice to Mariners number followed by:
  - T** indicates a Temporary Notice (eg. **\*NM 2T/2011**).
  - P** indicates a Preliminary Notice (eg. **\*NM 3P/2011**).
- b) Bearings are true reckoned clockwise from 000° to 359°; those relating to lights are from seaward.
- c) Heights and elevations are above Mean High Water Springs.

I  
INDEX OF CHARTS AND PUBLICATIONS

INDEX OF AFFECTED CHARTS

DESCRIPTION	NOTICE NO.	PAGE NO.
Index of Singaporean Charts	-	34
Index of Dual Badged Charts	-	35
Index of Singapore Electronic Navigational Chart (ENC)	-	36
New Publication "CHARTS FOR SMALL CRAFT"	-	37
New Edition Singaporean Charts	-	38
Singaporean Chart 202	17	39
Singaporean Chart 500	17	39
Singaporean Chart 501	17	39
Singaporean Chart 502	17, 18	39
Singaporean Chart 503	17	40
Temporary and Preliminary Notices	19T	41
Port Marine Notices	*20	42
Singaporean Print-On-Demand (POD) Charts	*21	42
Amendments to Publications	*22	43
Reprint of Radio Navigational Warnings	-	44
Reprint of Admiralty Notices to Mariners for Dual Badged Charts	-	45
Singapore Electronic Navigational Chart (ENC) Distributors	-	46
Chart Agents for the Maritime and Port Authority of Singapore Nautical Charts and Publications	-	47

\*Denotes information are based on Singaporean source.

I  
INDEX OF CHARTS AND PUBLICATIONS

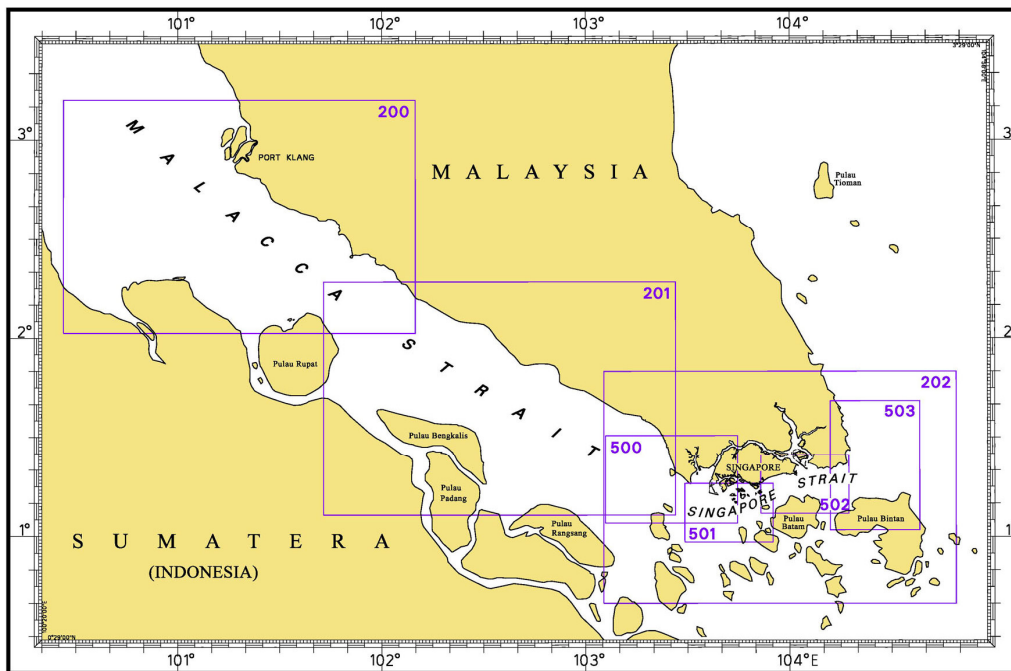
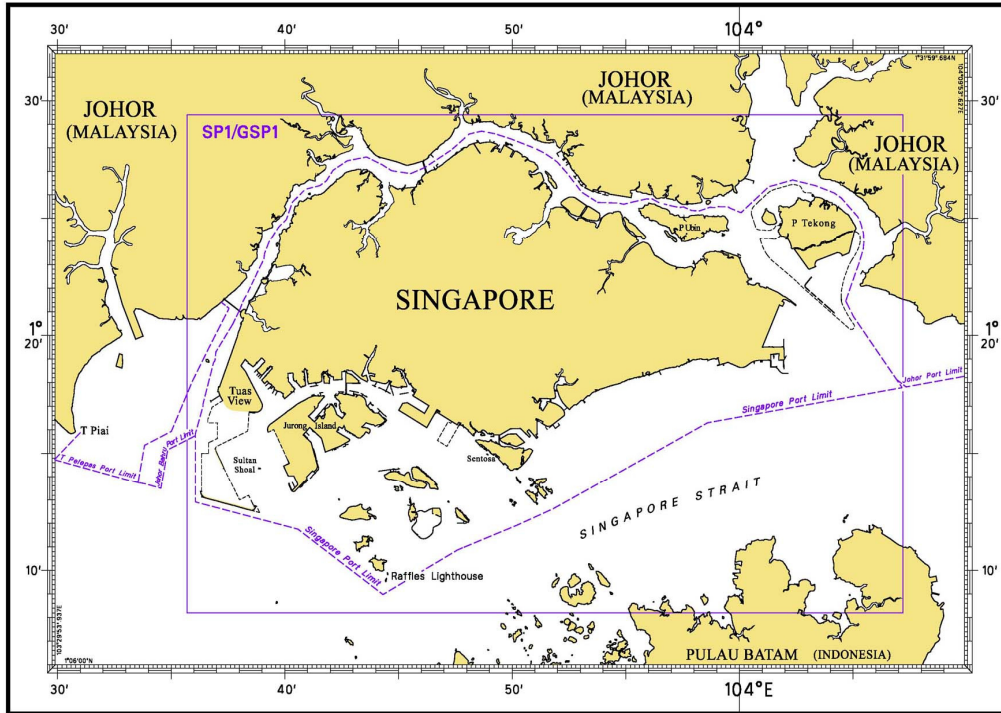
INDEX OF NOTICES

NOTICE NO.	DESCRIPTION	PAGE NO.
-	Index of Singaporean Charts	34
-	Index of Dual Badged Charts	35
-	Index of Singapore Electronic Navigational Chart (ENC)	36
-	New Publication "CHARTS FOR SMALL CRAFT"	37
-	New Edition Singaporean Charts	38
17	Singaporean Chart 202	39
17	Singaporean Chart 500	39
17	Singaporean Chart 501	39
17, 18	Singaporean Chart 502	39
17	Singaporean Chart 503	40
19T	Temporary and Preliminary Notices	41
*20	Port Marine Notices	42
*21	Singaporean Print-On-Demand (POD) Charts	42
*22	Amendments to Publications	43
-	Reprint of Radio Navigational Warnings	44
-	Reprint of Admiralty Notices to Mariners for Dual Badged Charts	45
-	Singapore Electronic Navigational (ENC) Distributors	46
-	Chart Agents for the Maritime and Port Authority of Singapore Nautical Charts and Publications	47

\* Denotes information are based on Singaporean source.

# I INDEX OF CHARTS AND PUBLICATIONS

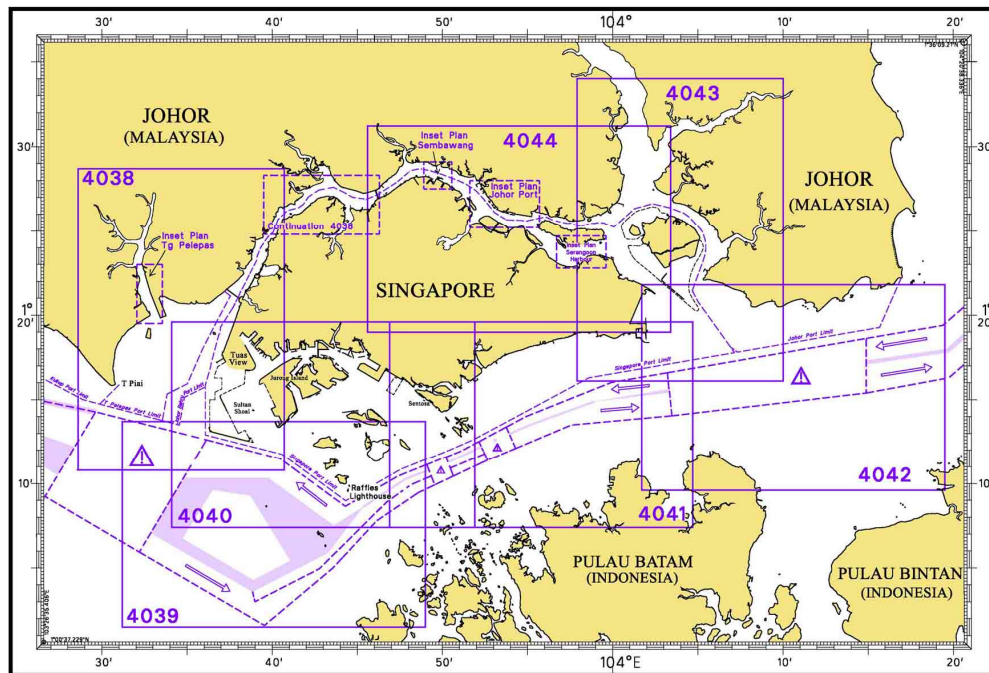
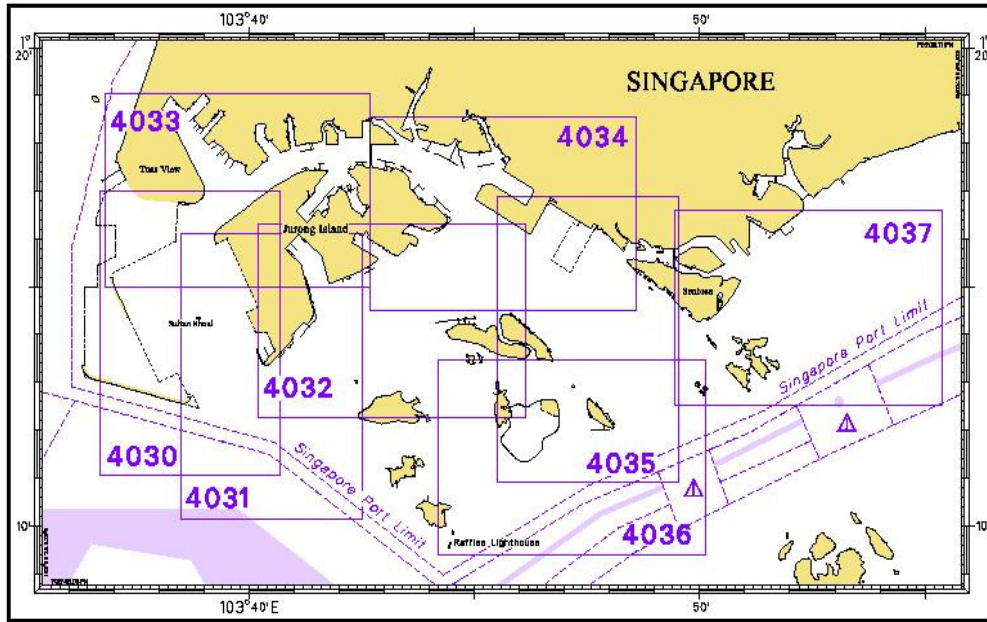
## INDEX OF SINGAPOREAN CHARTS



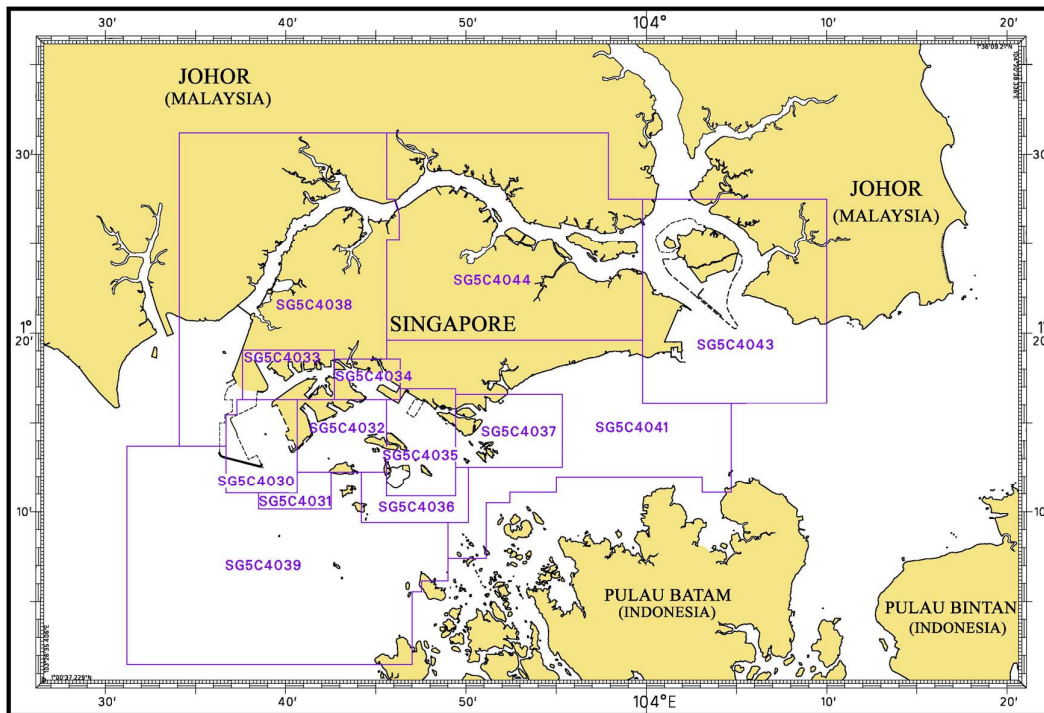
Notes:  
 Updated SINGAPOREAN Charts are available through our Print-On-Demand (POD) Chart Service. For more information, refer to Section III – Navigational Information and these charts can be purchased from our authorised Chart Agents:  
 DPM (Singapore) Pte Ltd, E.W. Liner Charts & Publications Pte Ltd and Motion Smith.

I  
INDEX OF CHARTS AND PUBLICATIONS

INDEX OF DUAL BADGED CHARTS



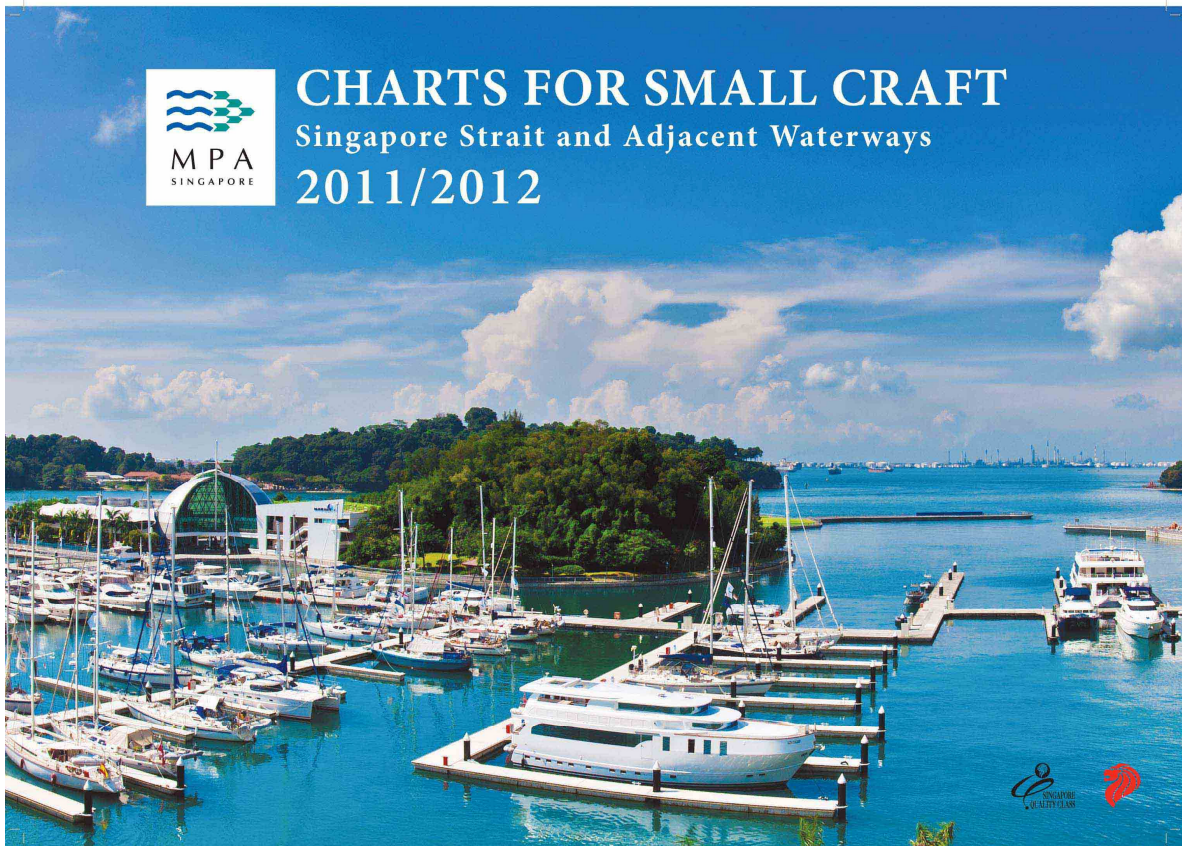
I  
**INDEX OF CHARTS AND PUBLICATIONS**  
**INDEX OF SINGAPORE ELECTRONIC NAVIGATIONAL CHART (ENC)**



**INDEX OF SINGAPORE ENC**

<b>ENC Name</b>	<b>ENC Title</b>	<b>Latitude</b>	<b>Longitude</b>
SG5C4030	West Jurong Anchorages and Temasek Fairway	1°11'050"N 1°16'300"N	103°36'700"E 103°40'640"E
SG5C4031	Western Approaches to Jurong Island	1°10'150"N 1°12'250"N	103°38'500"E 103°42'530"E
SG5C4032	Sinki Fairway	1°12'250"N 1°16'300"N	103°40'640"E 103°45'580"E
SG5C4033	Tuas Bay, West Jurong Channel and Pesek Basin	1°16'300"N 1°19'050"N	103°37'600"E 103°42'700"E
SG5C4034	East Jurong Channel, Pasir Panjang Terminal and West Keppel Fairway	1°16'300"N 1°18'550"N	103°42'700"E 103°46'356"E
SG5C4035	Western Anchorages, Jong Fairway and Cruise Bay	1°10'900"N 1°16'900"N	103°45'580"E 103°49'425"E
SG5C4036	Raffles Lighthouse to The Sisters	1°09'400"N 1°12'520"N	103°44'200"E 103°50'130"E
SG5C4037	Keppel Harbour, Tanjong Pagar Terminal and Approaches	1°12'520"N 1°16'590"N	103°49'425"E 103°55'340"E
SG5C4038	Johor Strait – Western Part	1°13'700"N 1°31'200"N	103°34'100"E 103°46'300"E
SG5C4039	Western Approaches to Main Strait	1°01'500"N 1°13'700"N	103°31'200"E 103°49'000"E
SG5C4041	Pulau Sebarok to Changi	1°07'400"N 1°19'600"N	103°45'600"E 104°04'700"E
SG5C4043	Kuala Johor and Sungai Johor	1°16'100"N 1°27'500"N	103°59'800"E 104°10'000"E
SG5C4044	Johor Strait – Eastern Part	1°19'600"N 1°31'200"N	103°45'600"E 103°59'800"E

## II NEW PUBLICATIONS



### NEW EDITION CHART PUBLISHED ON 20<sup>TH</sup> JANUARY 2011

<b>Chart Number</b>	:	CHARTS FOR SMALL CRAFT
<b>Title</b>	:	Singapore Strait and Adjacent Waterways – 2011/2012 Edition
<b>Date Published</b>	:	20 <sup>th</sup> January 2011
<b>Size of chart</b>	:	600 x 400 mm
<b>Remarks</b>	:	The publication contains 19 Small Craft Charts and related nautical information bound into an atlas measuring 600 x 400 mm. The pages are laminated to prevent damage from seawater.

The symbols, abbreviations and term depicted on these charts are consistent with the International Hydrographic Organization Chart Standards and Specifications.

Symbols for the locations of pleasure craft facilities and areas for sea sport activities such as board sailing, dinghy sailing, keelboat sailing, power-boating and water-skiing are also included and highlighted in red.

Chart of the same publication 2009/2010 Edition published on 15<sup>th</sup> January 2009 would be superseded.

## II NEW PUBLICATIONS

### NEW EDITION SINGAPOREAN CHART PUBLISHED ON 27<sup>TH</sup> JANUARY 2011

<b>Chart Number</b>	:	SP1
<b>Title</b>	:	Anchorage and Aids to Navigation
<b>Coverage</b>	:	Lat 1° 08' 20" N 1° 29' 40" N Long 103° 35' 70" E 104° 07' 20" E
<b>Scale</b>	:	1: 60 000
<b>Date Published</b>	:	27 <sup>th</sup> January 2011
<b>Size of chart</b>	:	973.9 x 651.2 mm
<b>Remarks</b>	:	This new edition includes: - <ul style="list-style-type: none"> <li>• New topography at Pulau Punggol Timor, Pulau Punggol Barat and Pulau Serangoon.</li> <li>• Reclamation at Ayer Chawan Basin and Marina South.</li> <li>• Pulau Tekong reclamation area.</li> <li>• Pasir Panjang reclamation area.</li> <li>• Submarine cables routes.</li> <li>• Depth contours covering the entire chart.</li> </ul>

This new edition supersedes the earlier edition published on 21<sup>st</sup> January 2010.

---

### NEW EDITION SINGAPOREAN CHART PUBLISHED ON 27<sup>TH</sup> JANUARY 2011

<b>Chart Number</b>	:	GSP1
<b>Title</b>	:	Anchorage and Aids to Navigation (with area reference)
<b>Coverage</b>	:	Lat 1° 08' 20" N 1° 29' 40" N Long 103° 35' 70" E 104° 07' 20" E
<b>Scale</b>	:	1: 60 000
<b>Date Published</b>	:	27 <sup>th</sup> January 2011
<b>Size of chart</b>	:	973.9 x 651.2 mm
<b>Remarks</b>	:	This new edition includes: - <ul style="list-style-type: none"> <li>• New topography at Pulau Punggol Timor, Pulau Punggol Barat and Pulau Serangoon.</li> <li>• Reclamation at Ayer Chawan Basin and Marina South.</li> <li>• Pulau Tekong reclamation area.</li> <li>• Pasir Panjang reclamation area.</li> <li>• Submarine cables routes.</li> <li>• Depth contours covering the entire chart.</li> </ul>

This new edition supersedes the earlier edition published on 21<sup>st</sup> January 2010.

---

## II NOTICES TO MARINERS AND CHART CORRECTIONS

<b>202</b>	6 Ed 24/9/09 Last NM 5/2011	(Royal Malaysian Navy Notice No. 12/184/2010)	<b>NM 17/2011</b>
<b>Insert</b>	limit of anchoring prohibited <del>TTTTT</del> <sup>X</sup> <del>TTTTT</del> , joining :	1°14·70'N 103°29·95'E 1°14·30'N 103°29·65'E 1°13·10'N 103°34·45'E 1°13·50'N 103°34·55'E 1°14·70'N 103°29·95'E	
	limit of anchoring prohibited <del>TTTTT</del> <sup>X</sup> <del>TTTTT</del> , joining :	1°18·85'N 104°13·32'E 1°17·80'N 104°07·30'E 1°17·40'N 104°07·65'E 1°18·41'N 104°13·46'E	
<b>Delete</b>	limit of anchoring prohibited <del>TTTTT</del> <sup>X</sup> <del>TTTTT</del> , joining :	1°18·41'N 104°13·46'E 1°18·85'N 104°13·32'E	



---

<b>500</b>	6 Ed 7/10/10 Last NM 6/2011	(Royal Malaysian Navy Notice No. 12/184/2010)	<b>NM 17/2011</b>
<b>Insert</b>	limit of anchoring prohibited <del>TTTTT</del> <sup>X</sup> <del>TTTTT</del> , joining :	1°14·70'N 103°29·95'E 1°14·30'N 103°29·65'E 1°13·10'N 103°34·45'E 1°13·50'N 103°34·55'E 1°14·70'N 103°29·95'E	

---

<b>501</b>	5 Ed 24/9/09 Last NM 4/2011	(Royal Malaysian Navy Notice No. 12/184/2010)	<b>NM 17/2011</b>
<b>Insert</b>	limit of anchoring prohibited <del>TTTTT</del> <sup>X</sup> <del>TTTTT</del> , joining :	1°14·70'N 103°29·95'E 1°14·30'N 103°29·65'E 1°13·10'N 103°34·45'E 1°13·50'N 103°34·55'E 1°14·70'N 103°29·95'E	

---

<b>502</b>	4 Ed 25/9/08 Last NM 3/2011	(Peninsular Malaysia Marine Dept. Notice No. 95T, 99/2010)	<b>NM 18/2011</b>
<b>Insert</b>	 <b>Wk (PA)</b>  <b>FI(2)10s</b>	1°17·68'N 104°10·68'E 1°17·68'N 104°11·09'E	
<b>Insert</b>	limit of anchoring prohibited <del>TTTTT</del> <sup>X</sup> <del>TTTTT</del> , joining :	1°18·85'N 104°13·32'E 1°17·80'N 104°07·30'E	<b>NM 17/2011</b>

**II**  
**NOTICES TO MARINERS AND CHART CORRECTIONS**

		1°17·40'N	104°07·65'E
		1°18·41'N	104°13·46'E
<b>Delete</b>	limit of anchoring prohibited <del>TTTTT</del> <del>X</del> <del>TTTTT</del> , joining :	1°18·41'N	104°13·46'E
		1°18·85'N	104°13·32'E

---

<b>503</b>	4 Ed 01/4/10 Last NM 5/2011	(Royal Malaysian Navy Notice No. 12/184/2010)	<b>NM 17/2011</b>
<b>Insert</b>	limit of anchoring prohibited <del>TTTTT</del> <del>X</del> <del>TTTTT</del> , joining :	1°18·85'N	104°13·32'E
		1°18·60'N	104°11·89'E
		(border)	
	limit of anchoring prohibited <del>TTTTT</del> <del>X</del> <del>TTTTT</del> , joining :	1°18·14'N	104°11·89'E
		(border)	
		1°18·41'N	104°13·46'E
<b>Delete</b>	limit of anchoring prohibited <del>TTTTT</del> <del>X</del> <del>TTTTT</del> , joining :	1°18·41'N	104°13·46'E
		1°18·85'N	104°13·32'E

---

**II**  
**TEMPORARY AND PRELIMINARY NOTICES**

**(NM 19T/2011) DREDGING OPERATION PERMATANG ALUR MUDAH, TRAFFIC SEPARATION SCHEME OFF PULAU PISANG**

**Remark :** Mariners are advised that Dimensi Hasil Sdn Bhd is conducting dredging operations on Permatang Alur Mudah, Traffic Separation Scheme off Pulau Pisang.  
**Date :** Duration from 15<sup>th</sup> January 2011 to 1<sup>st</sup> January 2015.

1. Dredging operations are in progress within the working area bounded by the following positions (WGS84).

1°41'50"N	102°54'20"E
1°25'10"N	103°14'00"E
1°23'00"N	103°12'25"E
1°39'40"N	102°52'50"E

2. Charts affected : 201, 202 and 500
3. Mariners are advised to keep a lookout and give a wide berth.

**Source :** Peninsular Malaysia, Marine Department Notice to Mariners No. 1T/2011.

---

### III NAVIGATIONAL INFORMATION

**\*(NM 20/2011) PORT MARINE NOTICES**

The following PMNs have been shortlisted, as they would be of particular interest to mariners.

These notices can be accessed directly from MPA website:

[http://www.mpa.gov.sg/sites/port\\_and\\_shipping/circulars\\_and\\_notices/port\\_marine\\_notices.page](http://www.mpa.gov.sg/sites/port_and_shipping/circulars_and_notices/port_marine_notices.page)

<b>PMN No.</b>	<b>Subject</b>
1/2011	Construction of jetties at Banyan Basin (Selat Banyan West jetty).
5/2011	Reclamation at Pasir Panjang Terminal and Pasir Panjang Wharves.

**\*(NM 21/2011) SINGAPOREAN PRINT-ON-DEMAND (POD) CHARTS**

Print-On-Demand (POD) Charts are the most up-to-date paper nautical charts printed for navigational use. These nautical charts are produced in accordance with the International Hydrographic Organisation (IHO) charting specifications. These official nautical charts are continually updated to the latest Notices to Mariners before they are printed and sold to users.

These POD Charts include SP1/GSP1, 200, 201, 202, 500, 501, 502 and 503.

**BENEFITS TO OUR CUSTOMERS**

**Convenience**

Customers need not make numerous hand corrections to the nautical charts before use. In addition the updated POD Charts are more accurate and reliable than offset printed charts with hand corrections.

**Clarity**

Clarity in the presentation of updated information as compared to lithographic printed charts, where in some cases there are several overlapping corrections over existing information.

**Coverage**

The POD Charts cover the Malacca and Singapore Straits, from One Fathom Bank to Horsburgh Lighthouse.

### III AMENDMENTS TO PUBLICATIONS

**\*(NM 22/2011) UPDATING OF PUBLICATION "SINGAPORE PORT INFORMATION 2010/2011"**

1. Page 114  
**CHARACTERISTICS OF AIDS TO NAVIGATION  
TEMASEK FAIRWAY**

Insert the following:

Name of Beacon/Buoy	Position Lat. N Long. E Deg Min	
	Delete	Insert
<b>Helios 1 Buoy</b>	01 14.009 103 40.180	<b>01 13.983 103 40.117</b>
<b>Helios 2 Buoy</b>	01 14.009 103 40.371	<b>01 13.982 103 40.375</b>

Source: HD/HY/ AA1914910

Name of Beacon/Buoy	Owner	
	Delete	Insert
<b>Helios 1 Buoy</b>	Helios Terminal Corporation	<b>Samsung C&amp;T Corporation (SLNG Terminal)</b>
<b>Helios 2 Buoy</b>	Helios Terminal Corporation	<b>Samsung C&amp;T Corporation (SLNG Terminal)</b>

Source: Samsung C&T (Singapore LNG Terminal)

2. Page 119  
**SINKI FAIRWAY**

Insert the following:

Name of Beacon/Buoy	Position Lat. N Long. E Deg Min	Structure Colour & Shape	Light Characteristic	Owner
<b>Banyan Beacon</b>	<b>01 13.346 103 41.584</b>	<b>Double black spheres, on black tubular tower with red horizontal band pivoted at base, with radar reflector and AIS, Buoyant beacon</b>	<b>Fl(2)W10s11m5M</b>	<b>MPA</b>

Delete the following:

Name of Beacon/Buoy	Position Lat. N Long. E Deg Min	Structure Colour & Shape	Light Characteristic	Owner
Banyan Buoy	01 13.315 103 41.600	Double black spheres topmarks on black red black pillar	Fl(2)W10s	MPA

Source: HD/HE025/001/2011

**IV**  
**REPRINT OF RADIO NAVIGATIONAL WARNINGS**

TT173

VESSELS IN EAST JOHOR STRAIT ARE ADVISED TO NAVIGATE WITH CAUTION WHEN NEAR THE PROJECT AREAS OFF PULAU TEKONG, CHANGI AND MALANG PAPAN AS SHALLOW WATER AREAS EXIST. VESSELS ARE ADVISED TO KEEP LOOKOUT FOR TUGS AND BARGES NAVIGATING NEAR THE PROJECT AREAS AND PASSENGER FERRIES CROSSING BETWEEN CHANGI AND PULAU TEKONG AND VICINITY OF PASIR GUDANG.

TT619

DREDGER QUEEN OF PENTA OCEAN IS CONDUCTING DREDGING OPERATIONS IN POSITIONS BOUNDED BY COORDINATES:

01°15.827' N 103°57.737' E

01°14.865' N 103°58.134' E

01°13.298' N 103°54.401' E

01°13.884' N 103°54.131' E

VESSELS ARE TO KEEP CLEAR.

TT753

A SMALL WOODEN CARGO BOAT 10M IN LENGTH SUNK AT 01°15.73'N 103°32.10'E.

TT884

SALVAGE OPERATIONS UNDERWAY IN 01°13.40'N 103°57.75'E. ALL SHIPS ARE REQUESTED TO GIVE A WIDE BERTH OF AT LEAST 5 CABLES WHEN PASSING THE AREA.

TT908

DANGER TO NAVIGATION (AMENDED ON 071700Z)

2 TUGBOATS REPORTED SUNK IN POSN 01°19.63'N 104°19.28'E. ALL VESSELS ARE TO NAVIGATE WITH CAUTION.

TT912

DANGER TO NAVIGATION

A VESSEL HAD SUNK IN POSITION 01°17.70'N 104°11'E. VESSELS ARE TO NAVIGATE WITH CAUTION.

TT921

BATU BERHANTI BUOY FL (2) 5 SECS IN POSITION 01°11.76'N 103°52.51'E IS REPORTED TO BE UNLIT

SR154

AN UNIDENTIFIED VESSEL REPORTED SUNK SOUTH WEST OF HORSBURGH AT 01°16.12'N 104°21.5'E.

ISSUED BY SINGAPORE PORT OPERATIONS CONTROL CENTRE (as at 23<sup>rd</sup> January 2011)

**V**  
**REPRINT OF ADMIRALTY NOTICES TO MARINERS**  
**FOR DUAL BADGED CHARTS**

**These notices can be accessed directly from UKHO Website:**

<http://www.ukho.gov.uk/ProductsandServices/MaritimeSafety/Pages/NMPublic.aspx>

**218\* SINGAPORE – Selat Sinki – Pulau Busing North-westwards and Jurong Island Northwards - Dredged depths.**

Source: Maritime and Port Authority of Singapore

**Chart 4032** [ *previous update 5836/10* ] WGS84 DATUM

Amend	dredged depth to, <i>17.5m (2010)</i> , centred on:	1° 14'·283N., 103° 44'·165E.
	dredged depth to, <i>15.9m (2010)</i> , centred on:	1° 14'·226N., 103° 44'·190E.

**Chart 4034** [ *previous update 5836/10* ] WGS84 DATUM

Amend	dredged depth to, <i>16.3m (2010)</i> , centred on:	1° 17'·521N., 103° 43'·438E.
	dredged depth to, <i>15.2m (2010)</i> , centred on:	1° 17'·448N., 103° 43'·562E.
	dredged depth to, <i>13.7m (2010)</i> , centred on:	1° 17'·427N., 103° 43'·508E.
	dredged depth to, <i>15.4m (2010)</i> , centred on:	1° 17'·390N., 103° 43'·575E.

**361\* SINGAPORE STRAIT – Johor (Malaysia) – Tanjung Piai South-eastwards – Restricted area.**

Source: Maritime Department, Malaysian Shipping Notice 35/10

**Chart 4038** [ *previous update 5836/10* ] WGS84 DATUM

Insert	limit of restricted area, $\text{TTTTT} \times \text{TTTTT}$ , joining:	1° 14'·70N., 103° 29'·96E.
		1° 13'·49N., 103° 34'·54E.
		1° 13'·10N., 103° 34'·45E.
		1° 14'·30N., 103° 29'·66E.

**Chart 4039** [ *previous update 5508/10* ] WGS84 DATUM

Insert	limit of restricted area, $\text{TTTTT} \times \text{TTTTT}$ , joining:	1° 13'·38N., 103° 34'·52E.
		(scales)
		1° 13'·10N., 103° 34'·45E.
		1° 13'·38N., 103° 33'·32E.
		(scales)

**Chart 4040** [ *previous update 5836/10* ] WGS84 DATUM

Insert	limit of restricted area, $\text{TTTTT} \times \text{TTTTT}$ , joining:	1° 13'·61N., 103° 34'·10E.
		(W border)
		1° 13'·50N., 103° 34'·55E.
		1° 13'·10N., 103° 34'·45E.
		1° 13'·19N., 103° 34'·10E.
		(W border)

Updated to Admiralty Notices to Mariners Edition No. 4 of 2011 dated 27<sup>th</sup> January 2011.

**SINGAPORE ELECTRONIC NAVIGATIONAL CHART (ENC) DISTRIBUTORS**  
Please approach any of the appointed distributors to purchase the Singapore ENC.

<b>DISTRIBUTOR</b>	<b>ADDRESS</b>	<b>TELEPHONE/FAX NO./EMAIL/WEBSITE</b>
DPM (Singapore) Pte Ltd	1 Maritime Square, #09-72 HarbourFront Centre, Singapore 099253	Tel. No.: +65 6270 4060 Fax No.: +65 6276 3858 Email: sales@dpmsingapore.com.sg Website: http://www.dpmsingapore.com.sg
Motion Smith	15 Jalan Kilang Barat #08-01/05 Frontech Centre Singapore 159357	Tel. No.: +65 6220 5098 Fax No.: +65 6225 4902 Email: sales@motsmith.com Website: http://www.motsmith.com
Transas Marine Pacific Pte Ltd	Cyber Centre 16 & 18 Jalan Kilang Barat Singapore 159358	Tel. No.: +65 6271 0200 Fax No.: +65 6271 7300 Email: dominic@transas.com.sg Website: http://www.transas.com.sg
Vector Services Pte Ltd	15 West Coast Highway, #02-14A Pasir Panjang Building Singapore 117861	Tel. No.: +65 6777 3602 Fax No.: +65 6777 9203 Email: kwchoy@pacific.net.sg
ChartWorld GmbH	Ruhrstrasse 90, D-22761 Hamburg, Germany	Tel. No.: +49 40 853 58 6942 Fax No.: +49 40 853 58 6949 Email: sales@chartworld.com Website : http://www.chartworld.com
Japan Hydrographic Association Electronic Charts Division	Daiichi Sogo Bldg, 6F 1-6-6, Hanedakuko, Ota-ku, Tokyo 144-0041, Japan	Tel. No.: +81 3 5708 7093 Fax No.: +81 3 5708 7094 Email: shimizu-6kj@jha.jp Website: http://www.jha.or.jp/en/jha/
Jeppesen Norway A/S	P.O Box 212 , N-4371 Egersund, Norway	Tel No.: +47 514 64 700 Fax No: +47 514 64 701 Email: license.marine@jeppesen.com Website : http://www.jeppesen.com
PRIMAR STAVANGER	Lervigsveien 36, P.O Box 60, N-4001 Stavanger, Norway	Tel. No.: +47 51 93 9500 Fax No.: +47 51 93 9501 Email: sales@ecc.no Website : http://www.primar.no
United Kingdom Hydrographic Office	Admiralty Way, Taunton, Somerset TA1 2DN United Kingdom	Tel. No.: +44 1823 337900 Fax No.: +44 1823 284077 Emails: ENC.SalesReports@ukho.gov.uk Website: http://www.ukho.gov.uk

## Chart Agents for the Maritime and Port Authority of Singapore Nautical Charts and Publications

**Agent's Name** : **DPM (Singapore) Pte Ltd**  
**Address** : 1 Maritime Square #09-72, HarbourFront Centre,  
Singapore 099253  
**Telephone** : (65) 6270 4060  
**Fax No.** : (65) 6276 3858  
**E-mail** : sales@dpmsingapore.com.sg  
**Internet Web Site** : <http://www.dpmsingapore.com.sg>

**Agent's Name** : **E.W. Liner Charts & Publications Pte Ltd**  
**Address** : 102F, Pasir Panjang Road, #08-01, Citilink Warehouse Complex,  
Singapore 118530  
**Telephone** : (65) 6323 0773  
**Fax No.** : (65) 6323 0775  
**E-mail** : ewliner@singnet.com.sg  
**Internet Web Site** : <http://www.ewliner.com>

**Agent's Name** : **Motion Smith**  
**Address** : 15 Jalan Kilang Barat  
#08-01/05 Frontech Centre,  
Singapore 159357  
**Telephone** : (65) 6220 5098  
(After office hours: 8163 9993)  
**Fax No.** : (65) 6225 4902  
**E-mail** : sales@motsmith.com  
**Internet Web Site** : <http://www.motsmith.com>

---

## HYDROGRAPHIC NOTE - Instructions

1. Mariners are requested to notify the Chief Hydrographer, Maritime and Port Authority of Singapore, when new or suspected dangers to navigation are discovered, changes are observed in aids to navigation or where corrections to nautical publications may be necessary. Reports, which cannot be confirmed or are lacking in certain details should not be withheld.
2. Any ambiguities of time, positioning and depth should be stressed and any firm expectation of being able to check the information provided on a following voyage should be mentioned.
3. Mariners using satellite position fixing systems, eg. GPS, should provide details of equipment and datum used (where applicable). Where bearings (true or magnetic) are taken visually or by radar to fix a position, it should include more than two objects in order to provide a check on its accuracy. A position may also be defined by bearing and distance from a conspicuous object eg. beacon, lighthouse etc.
4. The note should include a tracing or a digital image of the chart used and the details should be clearly marked.
5. Echo sounders frequently register greater depths than the advertised maximum depth for the equipment, eg. a trace appearing at 50 metres may be in fact be 550 metres or even 1050 metres for equipment whose maximum depth is 500 metres. Erroneous depths caused by 2nd transmission error can usually be recognised by the following:
  - (a) the tracing being weaker than normal for the depth registered,
  - (b) the trace appearing to pass through the transmission line,
  - (c) the feathery nature of the trace.
6. Upon receipt of a hydrographic note, a Notice to Mariners may be issued. The sender's vessel or name is quoted as the source unless the same information is also received in foreign Notices to Mariners.
7. Reports of shoals, uncharted dangers and defects in aids to navigation may also be made to the appropriate Singapore Port Operations Control Centre on VHF Channels 10, 12, 14, 68 or 73.

**HYDROGRAPHIC NOTE**

To:

Chief Hydrographer  
Hydrographic Department  
Maritime and Port Authority of Singapore  
460 Alexandra Road PSA Building #20-00  
Singapore 119963

Tel : (65) 6375 1227  
Fax : (65) 6278 7646  
Email : [hydrographic@mpa.gov.sg](mailto:hydrographic@mpa.gov.sg)

**Sender's Contact Details** :

Date : .....

Name of Vessel : .....

Address of Sender : .....

Tel : ..... Fax : .....

Email : .....

**Nature of Observation** :

General Location : .....

Subject : .....

Position : Lat. .... Long. ....

Charts Used : .....

Date & Time of Observation : .....

Details : .....

.....

.....

Attachment : .....

**Equipment Used** :

Type of Position Fixing : ..... GPS / DGPS ..... Others : .....

Type of Echo Sounder : .....

Name and Signature : .....

Ship's/Company's Stamp : .....