



SINGAPOREAN NOTICES TO MARINERS

| SECTION | CONTENT | Page |
|---------|---|------|
| I | Index of Charts & Publications | 1 |
| II | New Publications | 6 |
| | Notices to Mariners and Chart Corrections | 7 |
| | Temporary and Preliminary Notices | 8 |
| III | Navigational Information | 12 |
| | Amendments to Publications | 13 |
| IV | Reprint of Radio Navigational Warnings | 14 |
| V | Extract of Admiralty Notices to Mariners for Dual Badged Charts | 15 |

The monthly Notices to Mariners contain corrective information affecting charts published by the Hydrographic Department, Maritime and Port Authority of Singapore. The information contained in these Notices should be updated on the charts affected. Notices under Section II apply only to the particular Singaporean Chart(s) indicated.

Mariners are requested to notify the Chief Hydrographer, Maritime and Port Authority of Singapore, immediately on the discovery of new dangers or suspected dangers to navigation and of changes or defects in aids to navigation. See Hydrographic Note on back page.

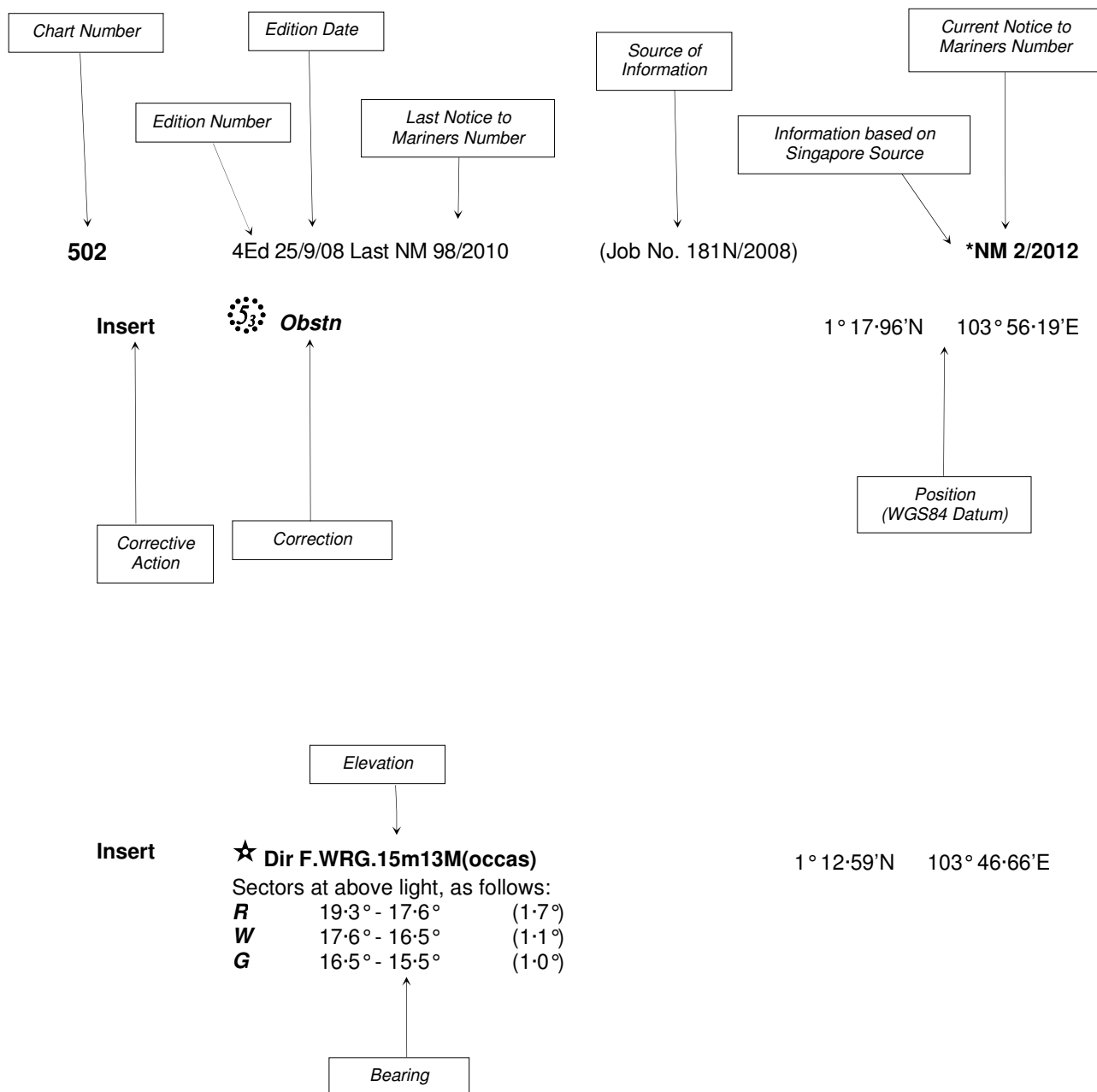
The monthly Singaporean Notices to Mariners can be accessed directly from the MPA website:
[http://www.mpa.gov.sg/sites/port_and_shipping/circulars_and_notices/singapore_notices_to_mariners\(ntm\).page](http://www.mpa.gov.sg/sites/port_and_shipping/circulars_and_notices/singapore_notices_to_mariners(ntm).page)

This service is offered free of charge.

Hydrographic Department
Maritime and Port Authority of Singapore
460 Alexandra Road
PSA Building #20-00
Singapore 119963
Tel: (65) 6375 1227
Fax: (65) 6278 7646

EXPLANATION OF FORMAT

The elements of a typical chart correction are explained below.



Notes:

- a) Notice to Mariners number followed by:
T indicates a Temporary Notice (eg. ***NM 3T/2012**).
P indicates a Preliminary Notice (eg. ***NM 4P/2012**).
- b) Bearings are true reckoned clockwise from 000° to 359°; those relating to lights are from seaward.
- c) Heights and elevations are above Mean High Water Springs.

I
INDEX OF CHARTS AND PUBLICATIONS

INDEX OF AFFECTED CHARTS

| DESCRIPTION | NOTICE NO. | PAGE NO. |
|--|---------------------------------------|----------|
| Index of Singaporean Charts | - | 3 |
| Index of Dual Badged Charts | - | 4 |
| Index of Singapore Electronic Navigational Chart (ENC) | - | 5 |
| Singaporean Chart GSP1, SP1 | *8, *9 | 7 |
| Singaporean Chart 200 | 10 | 7 |
| Singaporean Chart 502 | *8 | 7 |
| Temporary and Preliminary Notices | 11T, 12T, 13T, 14T, 15T, 16T, *17T | 8 to 11 |
| Port Marine Notices | *18 | 12 |
| Singaporean Print-On-Demand (POD) Charts | *19 | 12 |
| Amendments to Publications | *20 | 13 |
| Reprint of Radio Navigational Warnings | - | 14 |
| Extract of Admiralty Notices to Mariners for Dual Badged Charts | - | 15 to 17 |
| Singapore Electronic Navigational Chart (ENC) Distributors | - | 18 |
| Chart Agents for the Maritime and Port Authority of Singapore Nautical Charts and Publications | - | 18 |

*Denotes information are based on Singaporean source.

I
INDEX OF CHARTS AND PUBLICATIONS

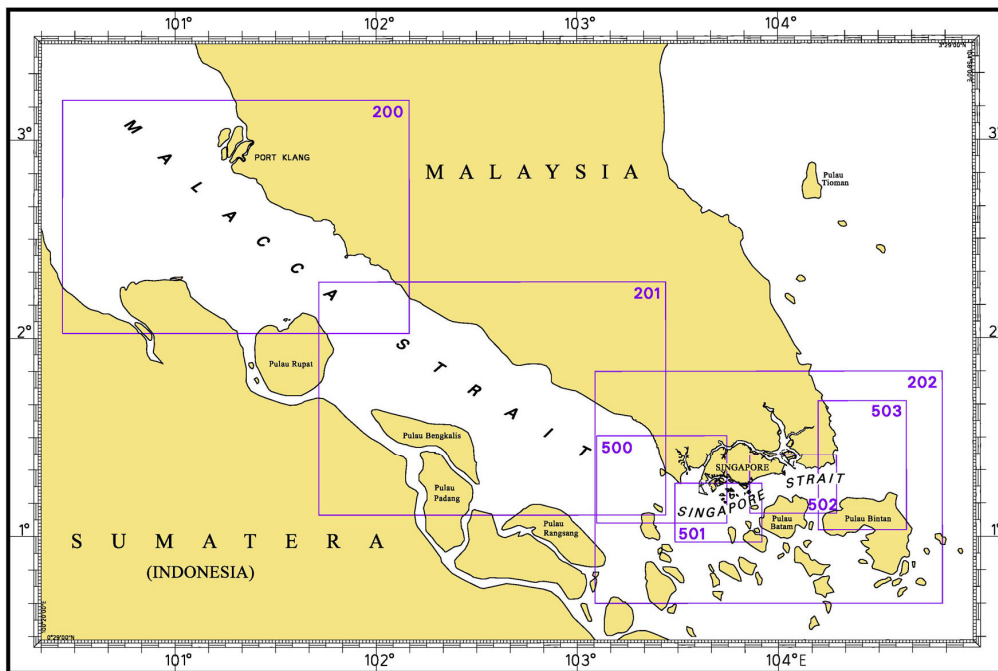
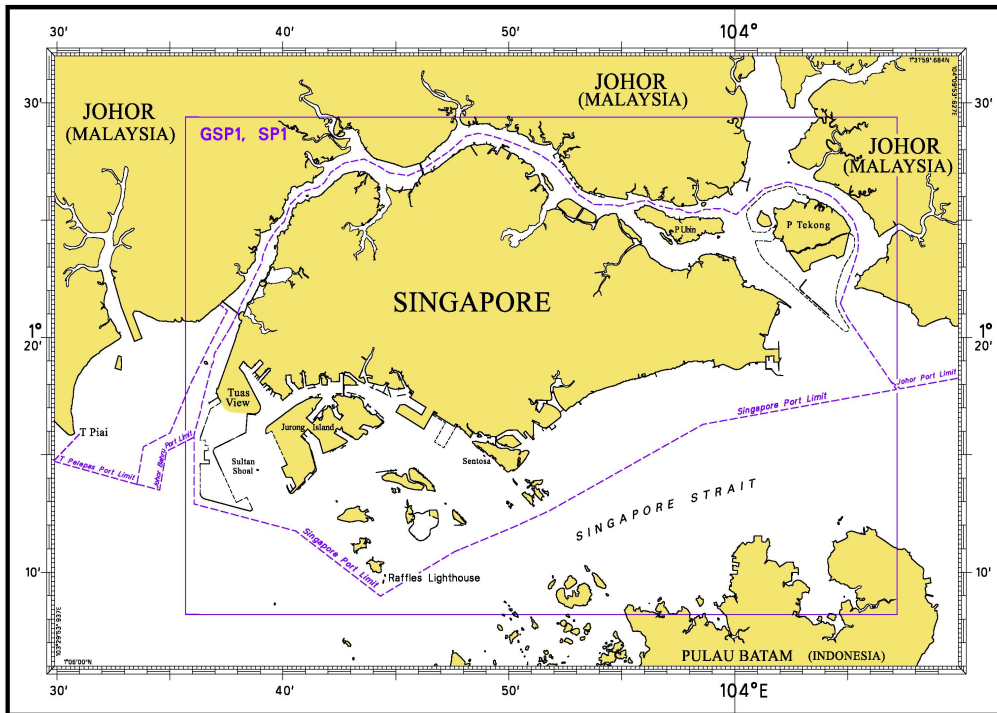
INDEX OF NOTICES

| NOTICE NO. | DESCRIPTION | PAGE NO. |
|--|--|----------|
| - | Index of Singaporean Charts | 3 |
| - | Index of Dual Badged Charts | 4 |
| - | Index of Singapore Electronic Navigational Chart (ENC) | 5 |
| *8,*9 | Singaporean Chart GSP1, SP1 | 7 |
| 10 | Singaporean Chart 200 | 7 |
| *8 | Singaporean Chart 502 | 7 |
| 11T, 12T, 13T, 14T, 15T, 16T, *17T | Temporary and Preliminary Notices | 8 to 11 |
| *18 | Port Marine Notices | 12 |
| *19 | Singaporean Print-On-Demand (POD) Charts | 12 |
| *20 | Amendments to Publications | 13 |
| - | Reprint of Radio Navigational Warnings | 14 |
| - | Extract of Admiralty Notices to Mariners for Dual Badged Charts | 15 to 17 |
| - | Singapore Electronic Navigational Chart (ENC) Distributors | 18 |
| - | Chart Agents for the Maritime and Port Authority of Singapore Nautical Charts and Publications | 18 |

* Denotes information are based on Singaporean source.

I INDEX OF CHARTS AND PUBLICATIONS

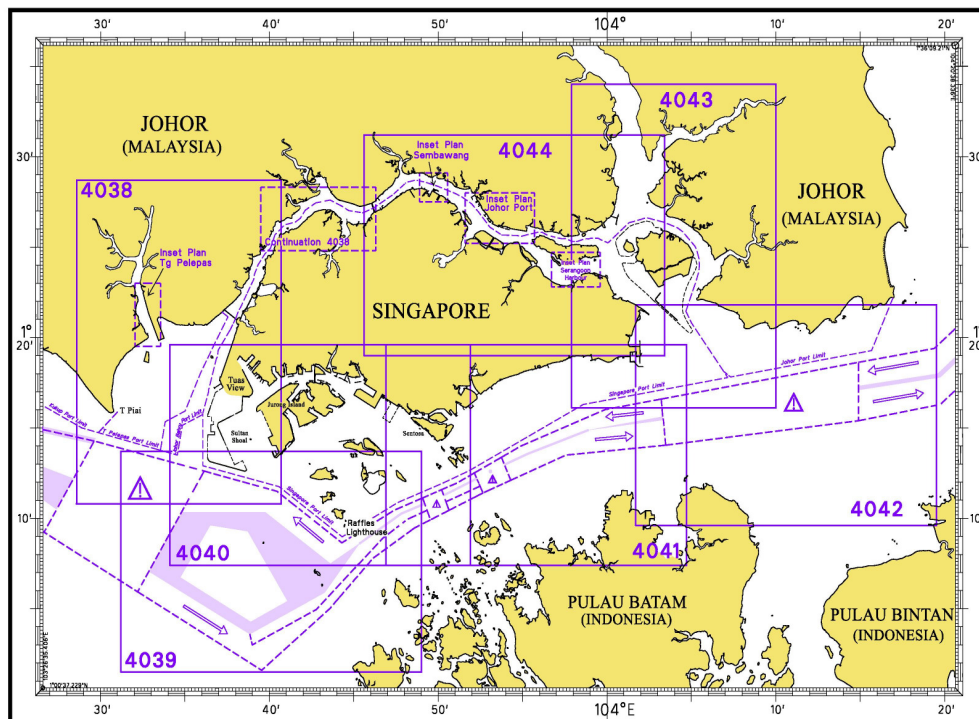
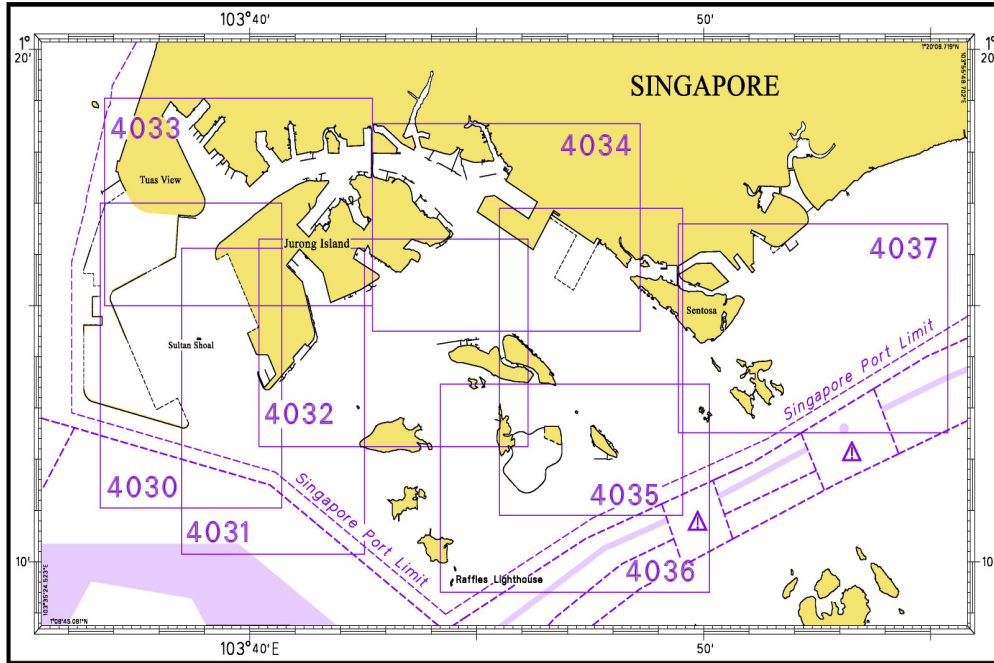
INDEX OF SINGAPOREAN CHARTS



Notes:
Updated SINGAPOREAN Charts are available through our Print-On-Demand (POD) Chart Service. For more information, refer to Section III – Navigational Information. These charts can be purchased from our authorised Chart Agents.

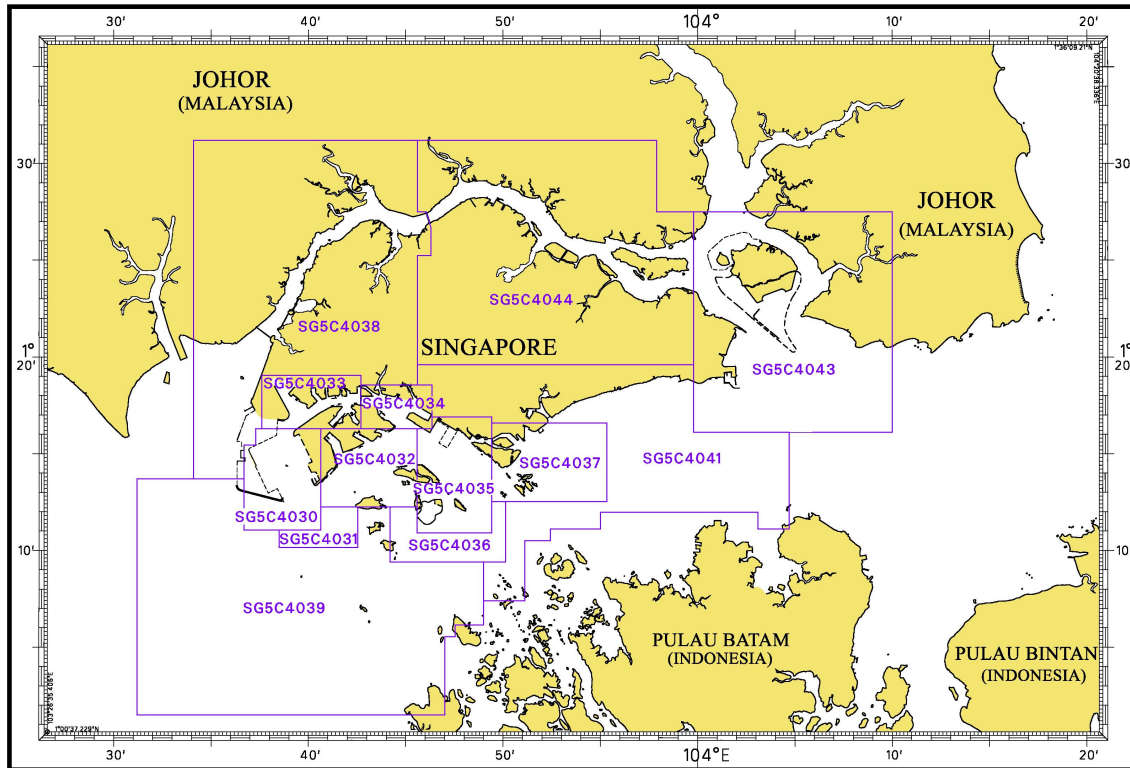
I INDEX OF CHARTS AND PUBLICATIONS

INDEX OF DUAL BADGED CHARTS



I INDEX OF CHARTS AND PUBLICATIONS

INDEX OF SINGAPORE ELECTRONIC NAVIGATIONAL CHART (ENC)






COVERAGE OF SINGAPORE ELECTRONIC NAVIGATIONAL CHART (ENC)


| ENC Name | ENC Coverage | ENC Edition |
|----------|---|---------------------------------------|
| SG5C4030 | West Jurong Anchorages and Temasek Fairway | 4 th Edition (28/10/2010) |
| SG5C4031 | Western Approaches to Jurong Island | 4 th Edition (28/10/2010) |
| SG5C4032 | Sinki Fairway | 6 th Edition (27/04/2011) |
| SG5C4033 | Tuas Bay, West Jurong Channel and Pesek Basin | 4 th Edition (28/10/2010) |
| SG5C4034 | East Jurong Channel, Pasir Panjang Terminal and West Keppel Fairway | 9 th Edition (29/09/2011) |
| SG5C4035 | Western Anchorages, Jong Fairway and Cruise Bay | 10 th Edition (29/09/2011) |
| SG5C4036 | Raffles Lighthouse to The Sisters | 5 th Edition (27/04/2011) |
| SG5C4037 | Keppel Harbour, Tanjong Pagar Terminal and Approaches | 5 th Edition (31/05/2011) |
| SG5C4038 | Johor Strait – Western Part | 4 th Edition (28/10/2010) |
| SG5C4039 | Western Approaches to Main Strait | 4 th Edition (11/08/2011) |
| SG5C4041 | Pulau Sebarok to Changi | 5 th Edition (11/08/2011) |
| SG5C4043 | Kuala Johor and Sungai Johor | 6 th Edition (28/07/2011) |
| SG5C4044 | Johor Strait – Eastern Part | 6 th Edition (28/07/2011) |

II
NEW PUBLICATIONS

Nil

II
NOTICES TO MARINERS AND CHART CORRECTIONS

| | | | |
|------------------|--|---------------------------------|-------------------|
| GSP1, SP1 | 6 Ed 27/1/11 Last NM 2/2012 | (HD/DB67/1/2012) | *NM 8/2012 |
| Insert | ++ <i>Rep (2011)</i> | 1°14·67'N | 104°04·08'E |
| | ++ <i>Rep (2011)</i> | 1°14·53'N | 104°04·71'E |
| | | (Port Marine Notice No. 5/2012) | *NM 9/2012 |
| Move |  <i>Fl.Y.4s MB1</i> from: | 1°15·67'N | 103°43·79'E |
| | to: | 1°15·59'N | 103°43·53'E |
| |  <i>Fl.Y.4s MB2</i> from: | 1°15·61'N | 103°43·62'E |
| | to: | 1°15·55'N | 103°43·39'E |
| Delete |  <i>Fl.Y.4s MB3</i> | 1°15·55'N | 103°43·45'E |

| | | | |
|---------------|--|---|-------------------|
| 200 | 3 Ed 22/9/11 Last NM 95/2011 | (Royal Malaysian Navy Notice No. 11/181/2011) | NM 10/2012 |
| Insert |  <i>Fl(2)5s</i> | (a) 2°50·28'N | 101°16·91'E |
| Delete | ★ Fl.5s24m15M adjacent to: | (a) above | |

| | | | |
|---------------|-------------------------------|------------------|-------------------|
| 502 | 5 Ed 22/9/11 Last NM 110/2011 | (HD/DB67/1/2012) | *NM 8/2012 |
| Insert | ++ <i>Rep (2011)</i> | 1°14·67'N | 104°04·08'E |
| | ++ <i>Rep (2011)</i> | 1°14·53'N | 104°04·71'E |

II TEMPORARY AND PRELIMINARY NOTICES

(NM 11T/2012) ASIA SUBMARINE CABLE EXPRESS (ASE) – Cable Testing and Repair Operation Segment 1.8

Remark : Cable Testing and repair operation will be carried out at Segment 1.8 of the ASE submarine cable at the Eastbound Lane of the Traffic Separation Scheme (TSS), thence through the eastern entrance of the TSS, Singapore Strait.

Work Vessel : Cable Ship 'FU HAI'

Date of Work : With effect from 1st to 14th February 2012.

Operating hours : 24 hours basis between Point B and Point D.

1. The submarine cable routes are listed as follows :

| RPL No. | (RPL Co-ordinates: WGS84) | | Remarks (Working hours) |
|--------------|---------------------------|---------------|----------------------------|
| | Latitude (N) | Longitude (E) | |
| From Point B | 1° 16' 23' | 104° 15' 42' | 24 hours |
| to Point C | 1° 17' 51' | 104° 19' 48' | 24 hours |
| to Point D | 1° 19' 33' | 104° 23' 11' | 24 hours |

2. Charts affected : GSP1, SP1, 202, 502, 503, 4042 and 4043.

3. Mariners are advised
 a) to navigate with caution.
 b) not to anchor or trawl in the vicinity of the cable route.
 c) to give a wide berth when approaching the working vessel.

Source : HD/DB67/3/2012.

(NM 12T/2012) ASIA SUBMARINE CABLE EXPRESS (ASE) – Cable installation off Tanah Merah

Remark : The ASE submarine cable laying operation off Tanah Merah will be laid at the Eastbound Lane of the Traffic Separation Scheme, in the Singapore Strait.

Work Vessel : Cable Ship 'ASEAN Protector'

Call Sign : 9VFU

Date of Installation : With effect from 17th February to 15th April 2012.

Operating hours : Daylight hours, including Sunday and Public Holiday .

1. The submarine cable routes are listed as follows :

| Position | (Co-ordinates: WGS84) | | Remarks (Working hours) |
|--------------|-----------------------|---------------|----------------------------|
| | Latitude (N) | Longitude (E) | |
| From Point 1 | 1° 18' 66' | 104° 00' 19' | Daylight hours |
| to Point 4 | 1° 17' 04' | 104° 02' 85' | Daylight hours |
| to Point 8 | 1° 16' 15' | 104° 04' 04' | Daylight hours |
| to Point 13 | 1° 14' 91' | 104° 05' 23' | Daylight hours |

II TEMPORARY AND PRELIMINARY NOTICES

2. Charts affected : GSP1, SP1, 202, 502, 4041, 4042 and 4043.
3. Mariners are advised
 - d) to navigate with caution.
 - e) not to anchor or trawl in the vicinity of the cable route.
 - f) to give a wide berth when approaching the working vessel.

Source : HD/DB67/2/2012

(NM 13T/2012) ASIA SUBMARINE CABLE EXPRESS (ASE) – Post Lay Inspection and Burial Works (PLIB)

Remark : The ASE submarine cable Post Lay Inspection and Burial Works shall be executed at Sector 9, in way of the West bound Traffic lane of the Traffic Separation Scheme (TSS) in the Singapore Strait.

Work Vessel : MIRAERO

Call Sign : DSRB3

Date of work With effect from 20th February to 30th March 2012.

Duration of survey Approximately 40 working days.

Operating hours : Daily, including Sunday and Public Holiday .

1. The locations where the PLIB activity will take place are as follows :

| Location No. | (Co-ordinates: WGS84) | | Remarks (Working hours) |
|--------------|-----------------------|---------------|----------------------------|
| | Latitude (N) | Longitude (E) | |
| No. 1 from | 1° 14·77' | 104° 05·30' | 24 hours |
| to | 1° 14·58' | 104° 06·22' | 24 hours |
| No. 2 from | 1° 14·81' | 104° 09·19' | 24 hours |
| to | 1° 15·07' | 104° 09·64' | 24 hours |
| No. 3 from | 1° 15·28' | 104° 11·06' | 24 hours |
| to | 1° 15·58' | 104° 12·01' | 24 hours |
| No. 4 from | 1° 15·74' | 104° 13·68' | 24 hours |
| to | 1° 15·87' | 104° 14·17' | 24 hours |
| No. 5 from | 1° 17·88' | 104° 20·20' | 24 hours |
| to | 1° 18·09' | 104° 20·71' | 24 hours |
| No. 6 from | 1° 18·41' | 104° 21·36' | 24 hours |
| to | 1° 18·49' | 104° 21·93' | 24 hours |
| No. 7 from | 1° 22·13' | 104° 25·86' | 24 hours |
| to | 1° 22·95' | 104° 25·98' | 24 hours |

2. Charts affected : GSP1, SP1, 202, 502, 503, 4041 and 4042.
3. Mariners are advised
 - a) to navigate with caution.
 - b) not to anchor or trawl in the vicinity of the cable route.
 - c) to give a wide berth when approaching the working vessel.

Source : HD/DB67/4/2012

II TEMPORARY AND PRELIMINARY NOTICES

(NM 14T/2012) BATAM RENGIT CABLE SYSTEM (BRCS) – Cable Diversion off South Johor

Remark : The BRCS submarine cable linking Batam (Indonesia) to Rengit (Malaysia) will be rerouted at the Eastbound Lane of the Traffic Separation Scheme, in the Singapore Strait.

Work Vessel : **Cable Ship ‘ASEAN Protector’**

Call Sign : **9VFU**

Date of Installation: With effect from 7th January to 15th February 2012.

Operating hours : Daylight hours, including Sunday and Public Holiday .

1. The submarine cable routes are listed as follows :

| Position | (Co-ordinates: WGS84) | | Remarks (Working hours) |
|--------------|-----------------------|---------------|----------------------------|
| | Latitude (N) | Longitude (E) | |
| From Point A | 1° 19·16' | 104° 17·10' | Daylight hours |
| to Point B | 1° 17·98' | 104° 17·09' | Daylight hours |
| to Point C | 1° 17·98' | 104° 13·89' | Daylight hours |

2. Charts affected : 202, 502, 503 and 4042.

3. Mariners are advised
 a) to navigate with caution.
 b) not to anchor or trawl in the vicinity of the cable route.
 c) to give a wide berth of radius 1000m from the working vessel.

Source : HD/DB67/14/2011.
 (Note: This is a repetition of SNM No. 1/3T/2012 with extension of date of installation)

(NM 15T/2012) NEW CARDINAL BUOYS ESTABLISHED AND REPOSITIONED AT MV ‘B OCEANIA’ WRECK

Mariners are advised that new cardinal buoys have been established and repositioned at MV ‘B Oceania’ wreck. The details are as follows :

| Buoy | Position | Light Character |
|----------------|------------------------|-----------------|
| North Cardinal | 1°27·20'N, 103°02·70'E | Fl.Q |
| North Cardinal | 1°26·50'N, 103°05·00'E | Fl.Q |
| North Cardinal | 1°26·00'N, 103°06·50'E | Fl.Q |
| North Cardinal | 1°25·30'N, 103°08·20'E | Fl.Q |
| East Cardinal | 1°24·70'N, 103°09·10'E | Fl.Q(3) |

Remark : Mariners are advised to navigate with caution when in the vicinity.

Charts affected : 201, 202 and 500

Source : Marine Department Peninsular Malaysia, Notice to Mariners No. 85T/2011.

II TEMPORARY AND PRELIMINARY NOTICES

(NM 16T/2012) SHORELINE BLASTING WORK FOR INDEPENDENT DEEP WATER TERMINAL IN THE PENDERANG WATERS, JOHOR

Mariners are advised that the shoreline blasting work will be carried out around Tanjong Kapal in the Pengerang waters, Johor and the details are as follows:

Blasting Area is bounded by the following co-ordinates.

| Point | Latitude | Longitude |
|-------|-----------|-------------|
| 1 | 1°20'47"N | 104°10'06"E |
| 2 | 1°20'43"N | 104°10'08"E |
| 3 | 1°20'44"N | 104°09'98"E |
| 4 | 1°20'47"N | 104°10'01"E |

Date : 10th January to 31st March 2012

Working Hours : 0800, 1000, 1200, 1400, 1600 and 1800 Hours

Caution : Two long sirens will be given before blasting and at the end of the second siren, the blast will be carried out.

Remark : All vessels and mariners are prohibited from entering the blasting area and to keep well clear of the vicinity during the blasting works.

Charts affected : 202, 502, 4042 and 4043

Source : Marine Department Malaysia, Southern Region, Port Circular No. 1 and 2 of 2012.

*(NM 17T/2012) SINGAPORE PORT INFORMATION 2010/2011

Mariners are informed that the above publication is still in use pending a new publication. Any amendment to the contents will be promulgated in the monthly Singaporean Notices to Mariners. The new edition of 'Singapore Port Information' will be published in early May 2012.

Remark : *For further enquiry, please contact:*
 Hydrographic Department
 Maritime and Port Authority of Singapore
 460 Alexandra Road
 #20-00 PSA Building
 Singapore 119963
 Telephone : (65) 6375 1227
 Facsimile : (65) 6278 7646
 E-mail : hydrographic@mpa.gov.sg
 MPA Web Site : <http://www.mpa.gov.sg>

III NAVIGATIONAL INFORMATION

***(NM 18/2012) PORT MARINE NOTICES**

The following PMNs have been shortlisted, as they would be of particular interest to mariners.

These notices can be accessed directly from MPA website:

http://www.mpa.gov.sg/sites/port_and_shipping/circulars_and_notices/port_marine_notices.page

| PMN No. | Subject |
|----------------|---|
| 172/2011 | Construction of SLNG Terminal at Jurong Island. |
| 174/2011 | Maintenance on Changi Point Terminal pontoons. |
| 1/2012 | Construction of sea water intake structure off Jurong Island. |
| 3/2012 | Marine construction works off Marina Barrage. |
| 5/2012 | Reclamation at Jurong Island. |
| 7/2012 | Dredging works off Pasir Panjang Terminal. |
| 9/2012 | Construction works at Banyan Basin (Selat Banyan West Jetty). |

***(NM 19/2012) SINGAPOREAN PRINT-ON-DEMAND (POD) CHARTS**

Print-On-Demand (POD) Charts are the most up-to-date paper nautical charts printed for navigational use. These nautical charts are produced in accordance with the International Hydrographic Organisation (IHO) chart specifications. These official nautical charts are continually updated to the latest Notices to Mariners before they are printed and sold to users.

These POD Charts include GSP1, SP1, 200, 201, 202, 500, 501, 502 and 503.

BENEFITS TO OUR CUSTOMERS

Convenience

Customers need not make numerous hand corrections to the nautical charts before use. In addition the updated POD Charts are more accurate and reliable than offset printed charts with hand corrections.

Clarity

Clarity in the presentation of updated information as compared to lithographic printed charts, where in some cases there are several overlapping corrections over existing information.

Coverage

The POD Charts cover the Malacca and Singapore Straits, from One Fathom Bank to Horsburgh Lighthouse.

III
AMENDMENTS TO PUBLICATIONS

***(NM 20/2012) UPDATING OF PUBLICATION "SINGAPORE PORT INFORMATION 2010/2011"**

1. Page 142 – Item 5

WHARVES AND BERTHS

SEMBAWANG WHARVES (PSA SINGAPORE TERMINALS)(1°27.7'N, 103°50.1'E)

Insert the following:

| Berths | Depth Alongside (Year Surveyed) | |
|-----------|------------------------------------|---------------------|
| | Delete | Insert |
| S2 | 10.4m (2011) | 10.7m (2011) |
| S3 | 9.1m (2011) | 9.5m (2011) |
| S4 | 9.0m (2011) | 9.4m (2011) |
| S5 | 8.6m (2011) | 9.2m (2011) |
| S6 | 10.5m (2011) | 10.7m (2011) |
| S7 | 11.4m (2011) | 12.0m (2011) |

Source: HD/HY Code M00103111, M00103211, M00104211 and M00104311

2. Page 149 – Item 19a

JURONG ISLAND - BANYAN BASIN (SBW JETTY)(1°15.3'N, 103°41.2'E)

Insert the following:

| Berths | Length of Berth | Depth Alongside (Year Surveyed) | Controlling Depth In Approaches |
|-----------|--------------------|------------------------------------|------------------------------------|
| 1A | 327m | 16.3m (2011) | - |
| 1B | | | |
| 1C | | | |

Source: HD/HY Code E00107111

3. Page 159 – Item 44b

JURONG ISLAND (TEMBUSU MULTI-UTILITY COMPLEX TERMINAL)(1°16.6'N, 103°40.0'E)

Insert the following:

| Berth | Length of Berth | Depth Alongside (Year Surveyed) | Controlling Depth In Approaches |
|-------------|--------------------|------------------------------------|------------------------------------|
| TMUC | 185m | 6.2m(2011) | - |

Source: HD/HY Code H00102711

IV
REPRINT OF RADIO NAVIGATIONAL WARNINGS

The following Radio Navigational Warnings have been shortlisted, as they would be of particular interest to mariners.

TT012

BUFFALO ROCK ISOLATED DANGER MARKS FL(2)5SECS IN POSITION 01°09'90"N 103°48'15"E IS UNLIT.

TT015 (AMENDED 051100UTC)

FLOATING CONTAINER IS SIGHTED IN THE WEST BOUND LANE OF SINGAPORE TSS AT POSITION 01°08'295"N 103°43'746"E. VESSELS IN THE VICINITY ARE ADVISED TO KEEP A SHARP LOOK OUT AND NAVIGATE WITH CAUTION.

TT016

CABLE SHIP 'ASEAN PROTECTOR' IS CARRYING OUT CABLE DIVERSION AND DIVING OPERATIONS ON THE BRCS CABLE IN THE TSS WEST BOUND LANE APPROX SOUTH OF TG. AYAM WITHIN THE FOLLOWING COORDINATES:

A LAT 01°19'1622"N LONG 104°17'1033"E

B LAT 01°17'9778"N LONG 104°17'0890"E

C LAT 01°17'9769"N LONG 104°13'8906"E

ALL VESSELS ARE ADVISED TO KEEP WELL CLEAR AND GIVE A WIDE BERTH WHEN APPROACHING THE VICINITY.

TT018

RACON DELTA Q(6)FL15S IN POSITION LAT 01°03'59"N LONG 103°38'86"E IS REPORTED UNLIT.

TT173

VESSELS IN EAST JOHOR STRAIT ARE ADVISED TO NAVIGATE WITH CAUTION WHEN NEAR THE PROJECT AREAS OFF PULAU TEKONG, CHANGI AND MALANG PAPAN AS SHALLOW WATER AREAS EXIST. VESSELS ARE ADVISED TO KEEP LOOKOUT FOR TUGS AND BARGES NAVIGATING NEAR THE PROJECT AREAS AND PASSENGER FERRIES CROSSING BETWEEN CHANGI AND PULAU TEKONG AND VICINITY OF PASIR GUDANG.

TT884

SALVAGE OPERATIONS UNDERWAY IN 01°13'40"N 103°57'75"E. ALL SHIPS ARE REQUESTED TO GIVE A WIDE BERTH OF AT LEAST 5 CABLES WHEN PASSING THE AREA.

TT931

VESSELS NAVIGATING IN THE SINGAPORE STRAIT ARE REQUESTED NOT TO DIRECT THEIR HIGH INTENSITY SEARCHLIGHTS SKYWARD IN THE VICINITY OF CHANGI AIRPORT TO AVOID DISRUPTION TO AIR NAVIGATION.

TT961

VESSELS INTENDING TO CROSS THE TRAFFIC SEPERATION SCHEME(TSS) OR PRECAUTIONARY AREAS IN THE SINGAPORE STRAIT DURING THE HOURS OF DARKNESS ARE RECOMMENDED TO DISPLAY THE NIGHT SIGNALS CONSISTING OF 3 ALL-ROUND GREEN LIGHTS IN A VERTICAL LINE WITH EFFECT FROM 1ST JULY 2011 AT 0000HRS UTC (0800HRS SINGAPORE LOCAL TIME) AS DETAILED IN MARITIME AND PORT AUTHORITY OF SINGAPORE'S PORT MARINE CIRCULAR, 02 OF 2011 DATED 30 MAY 2011.

ISSUED BY SINGAPORE PORT OPERATIONS CONTROL CENTRE (as at 29th January 2012)

V
**EXTRACT OF ADMIRALTY NOTICES TO MARINERS
 FOR DUAL BADGED CHARTS**

These notices can also be accessed directly from UKHO Website:
<http://www.ukho.gov.uk/ProductsandServices/MaritimeSafety/Pages/NMPublic.aspx>

118* SINGAPORE – Selat Pandan – Buoy. Light-beacon.

Light List Vol. F, 2011/12, 1686.4
 Source: Maritime and Port Authority of Singapore

Chart 4032 [*previous update 5495/11*] WGS84 DATUM

| | | |
|--------|--|------------------------------|
| Insert |  FI(3)R.15s Merbau | 1° 15'·619N., 103° 43'·773E. |
| Delete |  FI(3)R.15s7m5M Merbau | 1° 15'·779N., 103° 43'·757E. |

Chart 4034 [*previous update 5495/11*] WGS84 DATUM


| | | |
|--------|--|------------------------------|
| Insert |  FI(3)R.15s Merbau | 1° 15'·619N., 103° 43'·773E. |
| Delete |  FI(3)R.15s7m5M Merbau | 1° 15'·779N., 103° 43'·757E. |

Chart 4040 [*previous update 5495/11*] WGS84 DATUM

| | | |
|--------|--|----------------------------|
| Insert |  FI(3)R.15s Merbau | 1° 15'·62N., 103° 43'·77E. |
| Delete |  FI(3)R.15s7m5M Merbau | 1° 15'·78N., 103° 43'·76E. |

119* SINGAPORE – Jurong Island – Sakra Basin, Pulau Sebarok Southwards, Marina South, Town Reach, Changi East South Eastwards and Angler Bank – Light-beacons. Dredged depths. Works. Cautionary note. Wreck. Depths. Obstructions. Coastline. Maritime limit. Buoyage.

Light List Vol. F, 2011/12, 1695.1, 1695.2, 1695.25, 1735.6
 Source: Maritime and Port Authority of Singapore

Chart 4032 [*previous update 118/12*] WGS84 DATUM

| | | |
|-------|--|------------------------------|
| Amend | dredged depth to, 5.8m (2010) , centred on: | 1° 16'·025N., 103° 42'·426E. |
|-------|--|------------------------------|

Chart 4035 [*previous update New Edition 29/09/2011*] WGS84 DATUM











| | | |
|---------|---|------------------------------|
| Replace |  FI.Y.2s7m4M with  FI.Y.2s7m4M Vopak 1 | 1° 12'·007N., 103° 47'·592E. |
| | symbol, yellow light-beacon with topmark, FI.Y.4s9m4M, with | |
| |  FI.Y.4s9m4M Vopak 2 | 1° 12'·072N., 103° 47'·871E. |
| |  FI.Y.6s3M with  FI.Y.6s3M Vopak 3 | 1° 12'·006N., 103° 47'·981E. |

Chart 4036 [*previous update 3414/11*] WGS84 DATUM

| | | |
|---------|---|------------------------------|
| Replace |  FI.Y.2s7m4M with  FI.Y.2s7m4M Vopak 1 | 1° 12'·007N., 103° 47'·592E. |
| | symbol, yellow light-beacon with topmark, FI.Y.4s9m4M, with | |
| |  FI.Y.4s9m4M Vopak 2 | 1° 12'·072N., 103° 47'·871E. |
| |  FI.Y.6s3M with  FI.Y.6s3M Vopak 3 | 1° 12'·006N., 103° 47'·981E. |

V
**EXTRACT OF ADMIRALTY NOTICES TO MARINERS
 FOR DUAL BADGED CHARTS**

119* SINGAPORE – Jurong Island – Sakra Basin, Pulau Sebarok Southwards, Marina South, Town Reach, Changi East South Eastwards and Angler Bank – Light-beacons. Dredged depths. Works. Cautionary note. Wreck. Depths. Obstructions. Coastline. Maritime limit. Buoyage. (continued)

Chart 4037 [*previous update 5495/11*] WGS84 DATUM

Insert the accompanying block, showing new works, cautionary note, wreck and amendments to depths, obstructions, coastline and dredged depths, centred on: 1° 16'·150N., 103° 51'·610E.

Chart 4038 (plan A, Town Reach) [*previous update 5495/11*] WGS84 DATUM

Insert the accompanying block, showing amendments to depths, obstructions, centred on: 1° 26'·92N., 103° 44'·87E.

Chart 4041 [*previous update 5715/11*] WGS84 DATUM

Insert symbol, white light-beacon with triangular topmark apex downwards, **DirF.WRG.12m7-6M CNB** (a) 1° 18'·48N., 101° 01'·77E.
 sectors at light-beacon, as follows: (a) above
 G 80·0° - 87·5° (7·5°)
 W 87·5° - 92·5° (5°)
 R 92·5° - 100·0° (7·5°)

Chart 4042 [*previous update 5495/11*] WGS84 DATUM

Insert symbol, white light-beacon with triangular topmark apex downwards, **DirF.WRG.12m7-6M CNB** (a) 1° 18'·48N., 101° 01'·77E.
 sectors at light-beacon, as follows: (a) above
 G 80·0° - 87·5° (7·5°)
 W 87·5° - 92·5° (5°)
 R 92·5° - 100·0° (7·5°)

Chart 4043 [*previous update 5495/11*] WGS84 DATUM

Insert symbol, white light-beacon with triangular topmark apex downwards, **DirF.WRG.12m7-6M CNB** (a) 1° 18'·48N., 101° 01'·77E.
 sectors at light-beacon, as follows: (a) above
 G 80·0° - 87·5° (7·5°)
 W 87·5° - 92·5° (5°)
 R 92·5° - 100·0° (7·5°)
 maritime limit, pecked line, joining: (b) 1° 21'·34N., 104° 02'·42E. (shore)
 (c) 1° 21'·47N., 104° 02'·52E.
 (d) 1° 21'·24N., 104° 02'·83E.
 (e) 1° 20'·84N., 104° 02'·82E.
 (f) 1° 20'·71N., 104° 02'·63E.
 (g) 1° 20'·71N., 104° 02'·36E.
 (h) 1° 21'·16N., 104° 02'·26E.
 (i) 1° 21'·32N., 104° 02'·40E. (shore)



Fl.Y.4s CEF03

(e) above



Fl.Y.4s CEF02

(f) above



Fl.Y.4s CEF01

(g) above




legend, **Works in progress (2011)**, within:

(b)-(i) above

V
**EXTRACT OF ADMIRALTY NOTICES TO MARINERS
 FOR DUAL BADGED CHARTS**

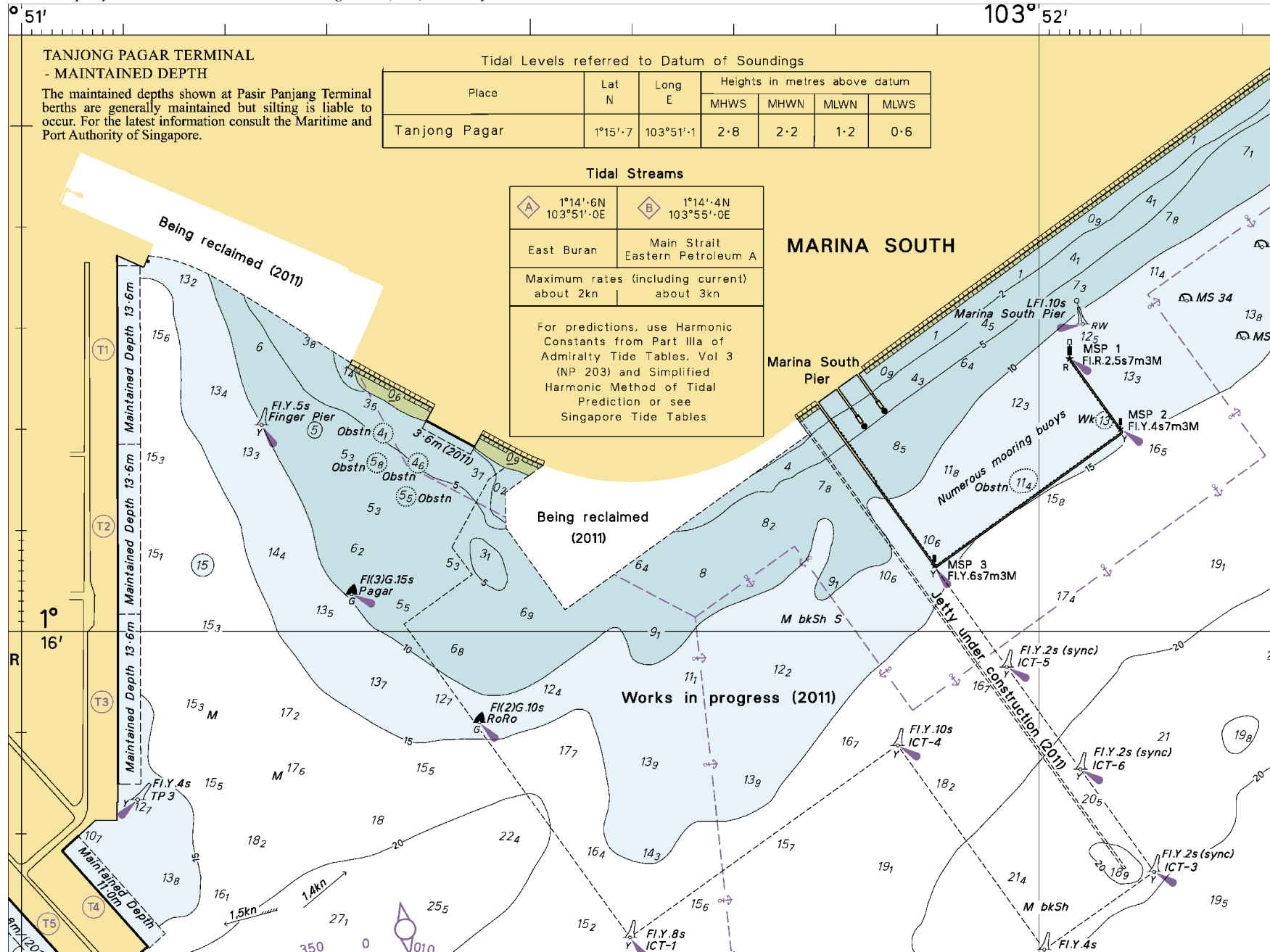
119* SINGAPORE – Jurong Island – Sakra Basin, Pulau Sebarok Southwards, Marina South, Town Reach, Changi East South Eastwards and Angler Bank – Light-beacons. Dredged depths. Works. Cautionary note. Wreck. Depths. Obstructions. Coastline. Maritime limit. Buoyage. (continued)

Chart 4044 [*previous update New Edition 28/07/2011*] WGS84 DATUM

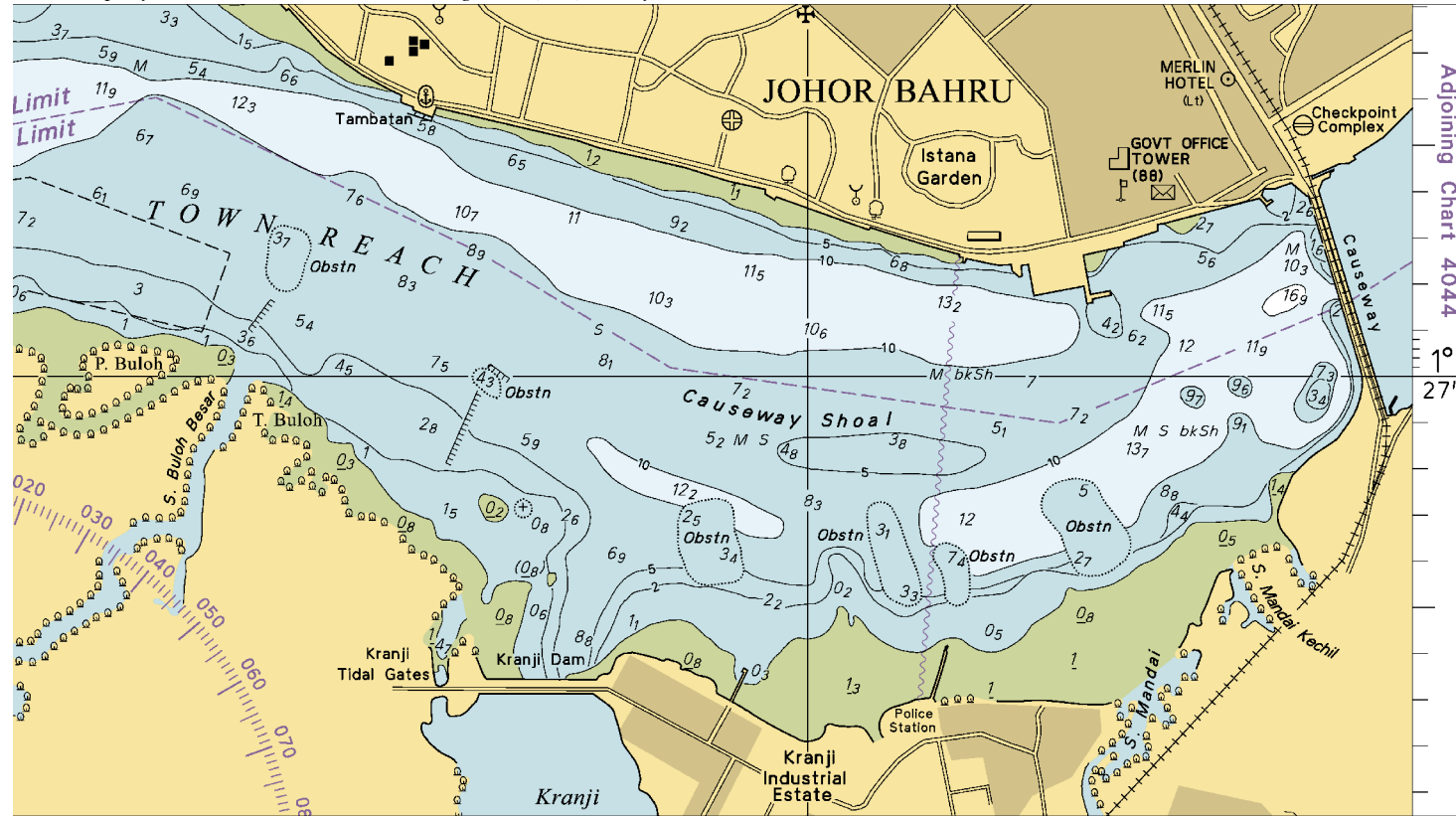
| | | | |
|--------|--|-----|---------------------------------------|
| Insert | maritime limit, pecked line, joining: | (a) | 1° 21'·34N., 104° 02'·42E. (shore) |
| | | (b) | 1° 21'·47N., 104° 02'·52E. |
| | | (c) | 1° 21'·24N., 104° 02'·83E. |
| | | (d) | 1° 20'·84N., 104° 02'·82E. |
| | | (e) | 1° 20'·71N., 104° 02'·63E. |
| | | (f) | 1° 20'·71N., 104° 02'·36E. |
| | | (g) | 1° 21'·16N., 104° 02'·26E. |
| | | (h) | 1° 21'·32N., 104° 02'·40E. (shore) |
| |  Fl.Y.4s CEF03 | | (d) above |
| |  Fl.Y.4s CEF02 | | (e) above |
| |  Fl.Y.4s CEF01 | | (f) above |
| | legend, Works in progress (2011) , within: | | (a)-(h) above |

Updated to Admiralty Notices to Mariners Edition No. 4 of 2012 dated 26th January 2012.

To accompany Notice to Mariners 119/12. Image Size (mm) 173.2 by 230.6



To accompany Notice to Mariners 119/12. Image Size (mm) 108 by 194.1



Block for Chart No 4038

SINGAPORE ELECTRONIC NAVIGATIONAL CHART (ENC) DISTRIBUTORS

Please approach any of the appointed distributors to purchase the Singapore ENC.

| DISTRIBUTOR | ADDRESS | TELEPHONE/FAX NO./EMAIL/WEBSITE |
|--|--|---|
| DPM (Singapore) Pte Ltd | 1 Maritime Square, #09-72 HarbourFront Centre, Singapore 099253 | Tel. No.: +65 6270 4060 Fax No.: +65 6276 3858 Email: sales@dpmsingapore.com.sg Website: http://www.dpmsingapore.com.sg |
| MARIS Information Systems (MARIS) | 52 Telok Blangah Road #01-06 Telok Blangah House Singapore 058809 | Tel. No.: +65 6276 1472 Fax No.: +65 6276 1473 Email: support@maris.sg Website: http://www.maris.no |
| Maritime Information Systems AS (MARIS) | Danholmen 25, 3128 Notteroy, Norway | Tel. No.: +47 33 30 42 50 Fax No.: +47 33 30 42 51 Email: sales@maris.no Website: http://www.maris.no |
| Motion Smith | 15 Jalan Kilang Barat #08-01/05 Frontech Centre Singapore 159357 | Tel. No.: +65 6220 5098 Fax No.: +65 6225 4902 Email: sales@motsmith.com Website: http://www.motsmith.com |
| Transas Marine Pacific Pte Ltd | Cyber Centre 16 & 18 Jalan Kilang Barat Singapore 159358 | Tel. No.: +65 6271 0200 Fax No.: +65 6271 7300 Email: dominic@transas.com.sg Website: http://www.transas.com.sg |
| Vector Services Pte Ltd | 15 West Coast Highway, #02-14A Pasir Panjang Building Singapore 117861 | Tel. No.: +65 6777 3602 Fax No.: +65 6777 9203 Email: kwchoy@pacific.net.sg |
| ChartWorld GmbH | Ruhrstrasse 90, D-22761 Hamburg, Germany | Tel. No.: +49 40 853 58 6942 Fax No.: +49 40 853 58 6949 Email: sales@chartworld.com Website : http://www.chartworld.com |
| Japan Hydrographic Association Electronic Charts Division | Daiichi Sogo Bldg, 6F 1-6-6, Hanedakuko, Ota-ku, Tokyo 144-0041, Japan | Tel. No.: +81 3 5708 7093 Fax No.: +81 3 5708 7094 Email: shimizu-6kj@jha.jp Website: http://www.jha.or.jp/en/jha/ |
| Jeppesen Norway A/S | P.O Box 212 , N-4371 Egersund, Norway | Tel No.: +47 514 64 700 Fax No: +47 514 64 701 Email: license.marine@jeppesen.com Website : http://www.jeppesen.com |
| PRIMAR STAVANGER | Lervigsveien 36, P.O Box 60, N-4001 Stavanger, Norway | Tel. No.: +47 51 93 9500 Fax No.: +47 51 93 9501 Email: sales@ecc.no Website : http://www.primar.no |
| United Kingdom Hydrographic Office | Admiralty Way, Taunton, Somerset TA1 2DN United Kingdom | Tel. No.: +44 1823 337900 Fax No.: +44 1823 284077 Email: ENC.SalesReports@ukho.gov.uk Website: http://www.ukho.gov.uk |

Chart Agents for the Maritime and Port Authority of Singapore
Nautical Charts and Publications

Please approach any of the appointed chart agent to purchase the Singapore Nautical Charts and Publications.

| CHART AGENT | ADDRESS | TELEPHONE/FAX NO./EMAIL/WEBSITE |
|--|--|---|
| DPM (Singapore) Pte Ltd | 1 Maritime Square, #09-72 HarbourFront Centre, Singapore 099253 | Tel. No.: +65 6270 4060 Fax No.: +65 6276 3858 Email: sales@dpmsingapore.com.sg Website: http://www.dpmsingapore.com.sg |
| E.W. Liner Charts & Publications Pte Ltd | 102F, Pasir Panjang Road, #08-01, Citilink Warehouse Complex, Singapore 118530 | Tel. No.: +65 6323 0773 Fax No.: +65 6323 0775 Email: ewliner@singnet.com.sg Website: http://www.ewliner.com |
| Motion Smith | 15 Jalan Kilang Barat #08-01/05 Frontech Centre Singapore 159357 | Tel. No.: +65 6220 5098 (After office hours: +65 8163 9993) Fax No.: +65 6225 4902 Email: sales@motsmith.com Website: http://www.motsmith.com |

HYDROGRAPHIC NOTE - Instructions

1. Mariners are requested to notify the Chief Hydrographer, Maritime and Port Authority of Singapore, when new or suspected dangers to navigation are discovered, changes are observed in aids to navigation or where corrections to nautical publications may be necessary. Reports, which cannot be confirmed or are lacking in certain details should not be withheld.
2. Any ambiguities of time, positioning and depth should be stressed and any firm expectation of being able to check the information provided on a following voyage should be mentioned.
3. Mariners using satellite position fixing systems, eg. GPS, should provide details of equipment and datum used (where applicable). Where bearings (true or magnetic) are taken visually or by radar to fix a position, it should include more than two objects in order to provide a check on its accuracy. A position may also be defined by bearing and distance from a conspicuous object eg. beacon, lighthouse etc.
4. The note should include a tracing or a digital image of the chart used and the details should be clearly marked.
5. Echo sounders frequently register greater depths than the advertised maximum depth for the equipment, eg. a trace appearing at 50 metres may be in fact be 550 metres or even 1050 metres for equipment whose maximum depth is 500 metres. Erroneous depths caused by 2nd transmission error can usually be recognised by the following:
 - (a) the tracing being weaker than normal for the depth registered,
 - (b) the trace appearing to pass through the transmission line,
 - (c) the feathery nature of the trace.
6. Upon receipt of a hydrographic note, a Notice to Mariners may be issued. The sender's vessel or name is quoted as the source unless the same information is also received in foreign Notices to Mariners.
7. Reports of shoals, uncharted dangers and defects in aids to navigation may also be made to the appropriate Singapore Port Operations Control Centre on VHF Channels 10, 12, 14, 68 or 73.

HYDROGRAPHIC NOTE

To:

Chief Hydrographer
Maritime and Port Authority of Singapore
460 Alexandra Road PSA Building #20-00
Singapore 119963

Tel : (65) 6375 1227
Fax : (65) 6278 7646
Email : hydrographic@mpa.gov.sg

Sender's Contact Details :

Date :
Name of Vessel :
Address of Sender :
Tel : Fax :
Email :

Nature of Observation :

General Location :
Subject :
Position : Lat. Long.
Charts Used :
Date & Time of Observation :
Details :
.....
.....
Attachment :

Equipment Used :

Type of Position Fixing : GPS / DGPS Others :
Type of Echo Sounder :

Name and Signature :

Ship's/Company's Stamp :