



## SINGAPOREAN NOTICES TO MARINERS

---

SECTION	CONTENT	Page
I	Index of Charts & Publications	1
II	New Publications	6
	Notices to Mariners and Chart Corrections	7
	Temporary and Preliminary Notices	11
III	Navigational Information	13
	Amendments to Publications	14
IV	Reprint of Radio Navigational Warnings	15
V	Extract of Admiralty Notices to Mariners for Dual Badged Charts	16

---

**The monthly Notices to Mariners contain corrective information affecting charts published by the Hydrographic Department, Maritime and Port Authority of Singapore. The information contained in these Notices should be updated on the charts affected. Notices under Section II apply only to the particular Singaporean Chart(s) indicated.**

---

Mariners are requested to notify the Chief Hydrographer, Maritime and Port Authority of Singapore, immediately on the discovery of new dangers or suspected dangers to navigation and of changes or defects in aids to navigation. See Hydrographic Note on back page.

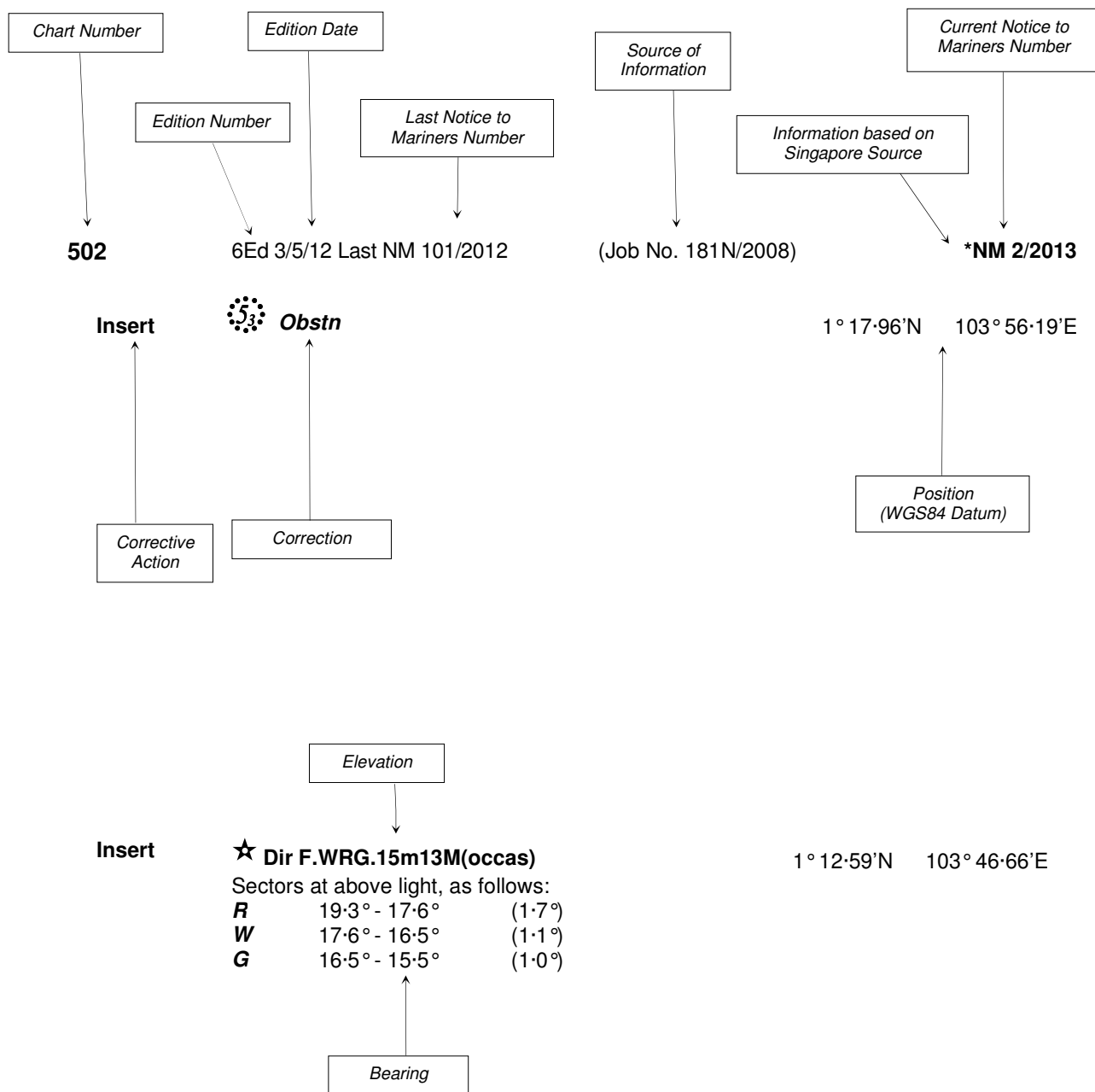
The monthly Singaporean Notices to Mariners can be accessed directly from the MPA website:  
[www.mpa.gov.sg/sites/port\\_and\\_shipping/circulars\\_and\\_notices/singapore\\_notices\\_to\\_mariners\(ntm\).page](http://www.mpa.gov.sg/sites/port_and_shipping/circulars_and_notices/singapore_notices_to_mariners(ntm).page)

This service is offered free of charge.

Hydrographic Department  
Maritime and Port Authority of Singapore  
460 Alexandra Road  
PSA Building #20-00  
Singapore 119963  
Tel: (65) 6375 1227  
Fax: (65) 6278 7646

## EXPLANATION OF FORMAT

The elements of a typical chart correction are explained below.



**Notes:**

- a) Notice to Mariners number followed by:  
**T** indicates a Temporary Notice (eg. **\*NM 3T/2013**).  
**P** indicates a Preliminary Notice (eg. **\*NM 4P/2013**).
- b) Bearings are true reckoned clockwise from 000° to 359°; those relating to lights are from seaward.
- c) Heights and elevations are above Mean High Water Springs.

I  
INDEX OF CHARTS AND PUBLICATIONS

INDEX OF AFFECTED CHARTS

DESCRIPTION	NOTICE NO.	PAGE NO.
Index of Singaporean Charts	-	3
Index of Dual Badged Charts	-	4
Index of Singapore Electronic Navigational Chart (ENC)	-	5
New Edition Singaporean Chart	-	6
Singaporean Chart GSP1/SP1	*10, *11, *12, *13, *14, *15, 16	7
Singaporean Chart 201	17, 18, 19, 20	7, 8
Singaporean Chart 202	*15, 17, 18, 19, 21	8, 9
Singaporean Chart 500	17, 18, 19	9
Singaporean Chart 501	*22	9
Singaporean Chart 502	*10, *12, *14, 16, 21	9, 10
Singaporean Chart 503	21	10
Temporary and Preliminary Notices	23T, 24T	11, 12
Singapore Port Marine Notices	*25	13
Singaporean Print-On-Demand (POD) Charts	*26	13
Amendments to Publications	*27	14
Reprint of Radio Navigational Warnings	-	15
Extract of Admiralty Notices to Mariners for Dual Badged Charts	-	16, 17
Singapore Electronic Navigational Chart (ENC) Distributors	-	18
Chart Agents for the Maritime and Port Authority of Singapore Nautical Charts and Publications	-	19

\*Denotes information are based on Singaporean source.

I  
INDEX OF CHARTS AND PUBLICATIONS

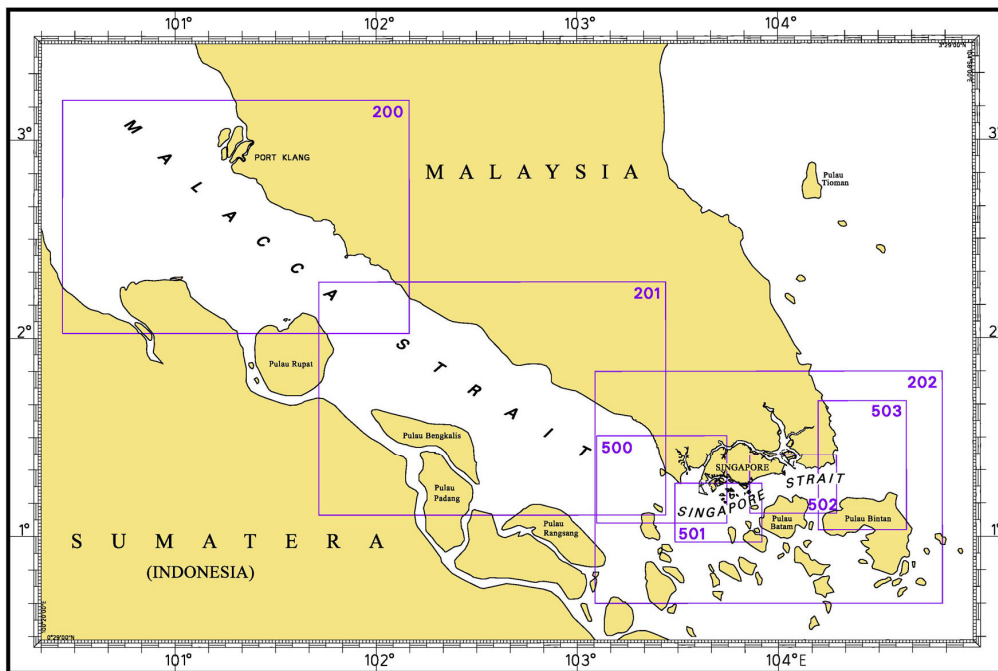
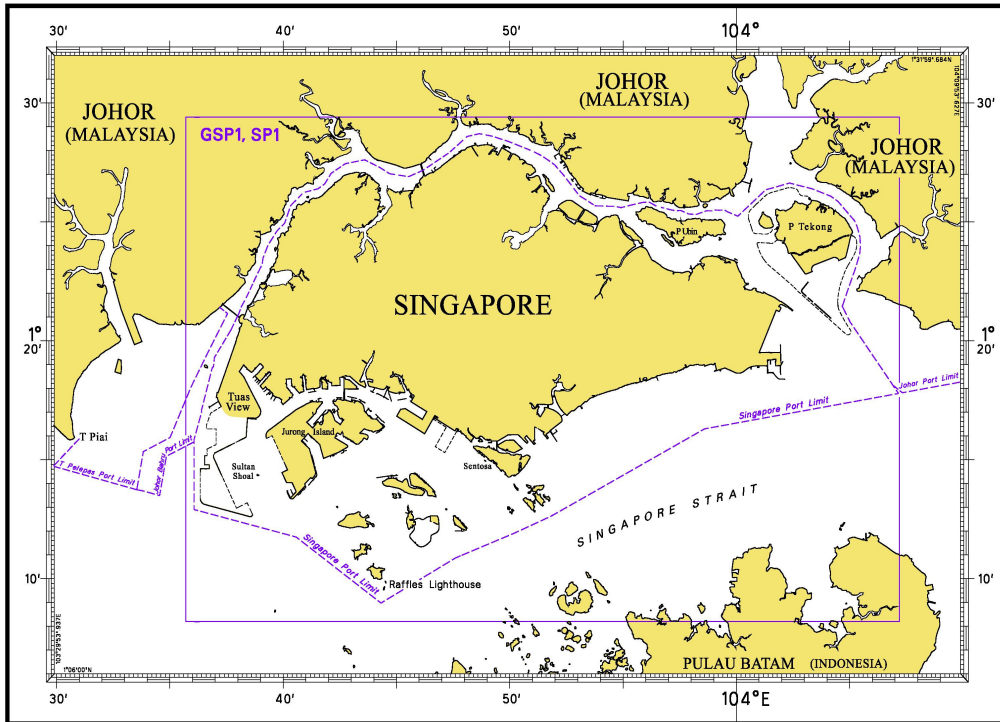
INDEX OF NOTICES

NOTICE NO.	DESCRIPTION	PAGE NO.
-	Index of Singaporean Charts	3
-	Index of Dual Badged Charts	4
-	Index of Singapore Electronic Navigational Chart (ENC)	5
-	New Edition Singaporean Chart	6
*10, *11, *12, *13 *14, *15, 16	Singaporean Chart GSP1/SP1	7
17, 18, 19, 20	Singaporean Chart 201	7, 8
*15, 17, 18, 19, 21	Singaporean Chart 202	8, 9
17, 18, 19	Singaporean Chart 500	9
*22	Singaporean Chart 501	9
*10, *12, *14, 16, 21	Singaporean Chart 502	9, 10
21	Singaporean Chart 503	10
23T, 24T	Temporary and Preliminary Notices	11, 12
*25	Singapore Port Marine Notices	13
*26	Singaporean Print-On-Demand (POD) Charts	13
*27	Amendments to Publications	14
-	Reprint of Radio Navigational Warnings	15
-	Extract of Admiralty Notices to Mariners for Dual Badged Charts	16, 17
-	Singapore Electronic Navigational Chart Distributors	18
-	Chart Agents for the Maritime and Port Authority of Singapore Nautical Charts and Publications	19

\* Denotes information are based on Singaporean source.

# I INDEX OF CHARTS AND PUBLICATIONS

## INDEX OF SINGAPOREAN CHARTS

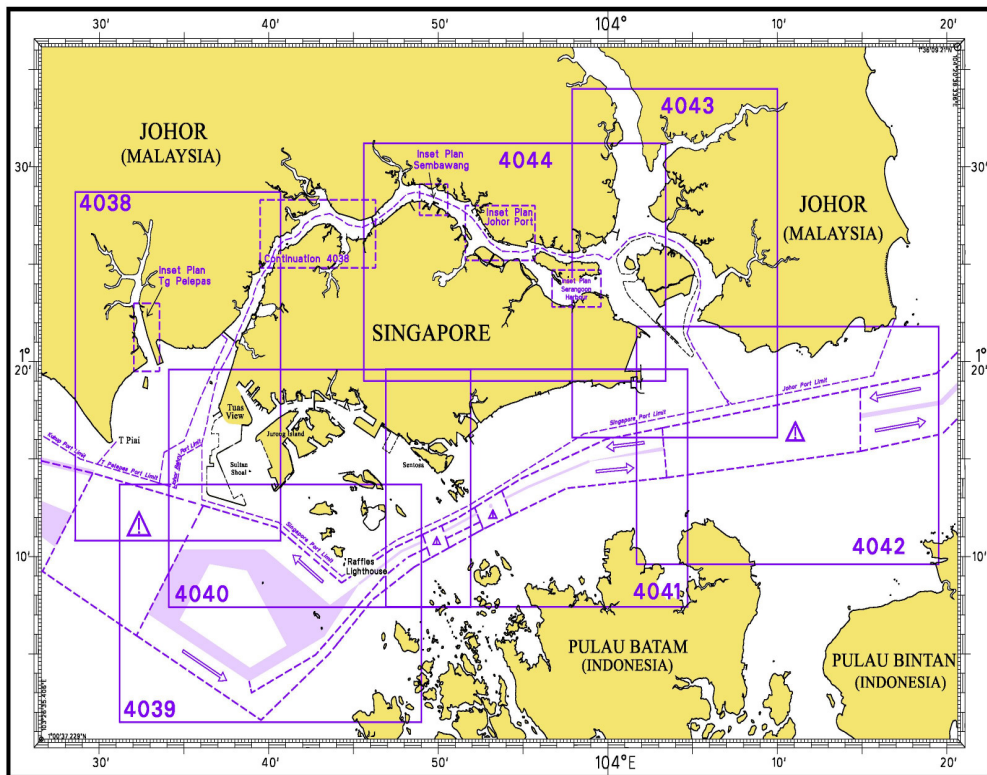
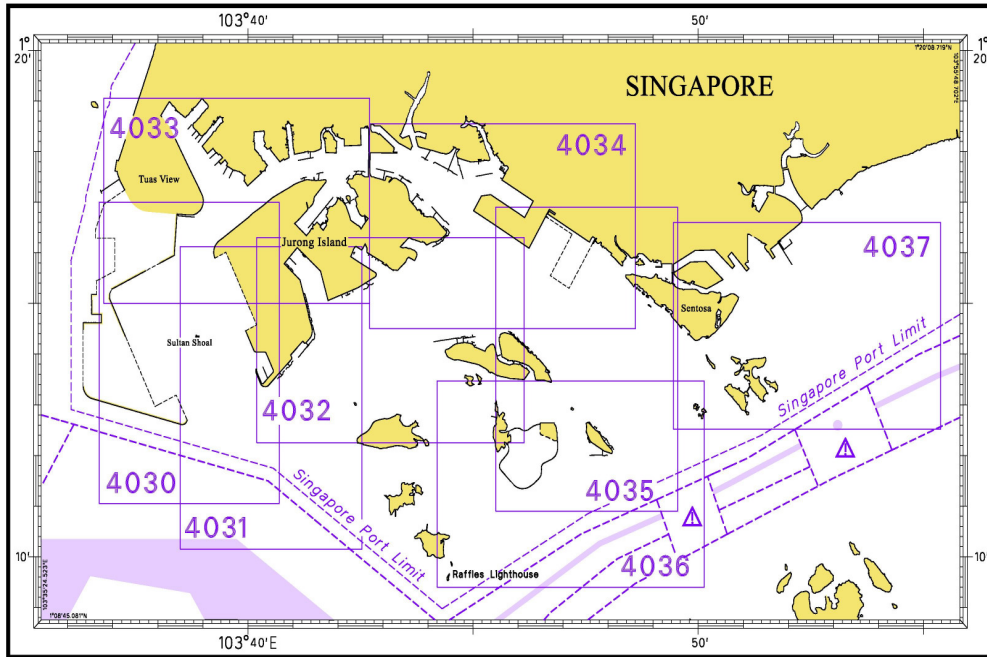


**Notes:**

Updated SINGAPOREAN Charts are available through our Print-On-Demand (POD) Chart Service. For more information, refer to Section III – Navigational Information. These charts can be purchased from our authorised Chart Agents.

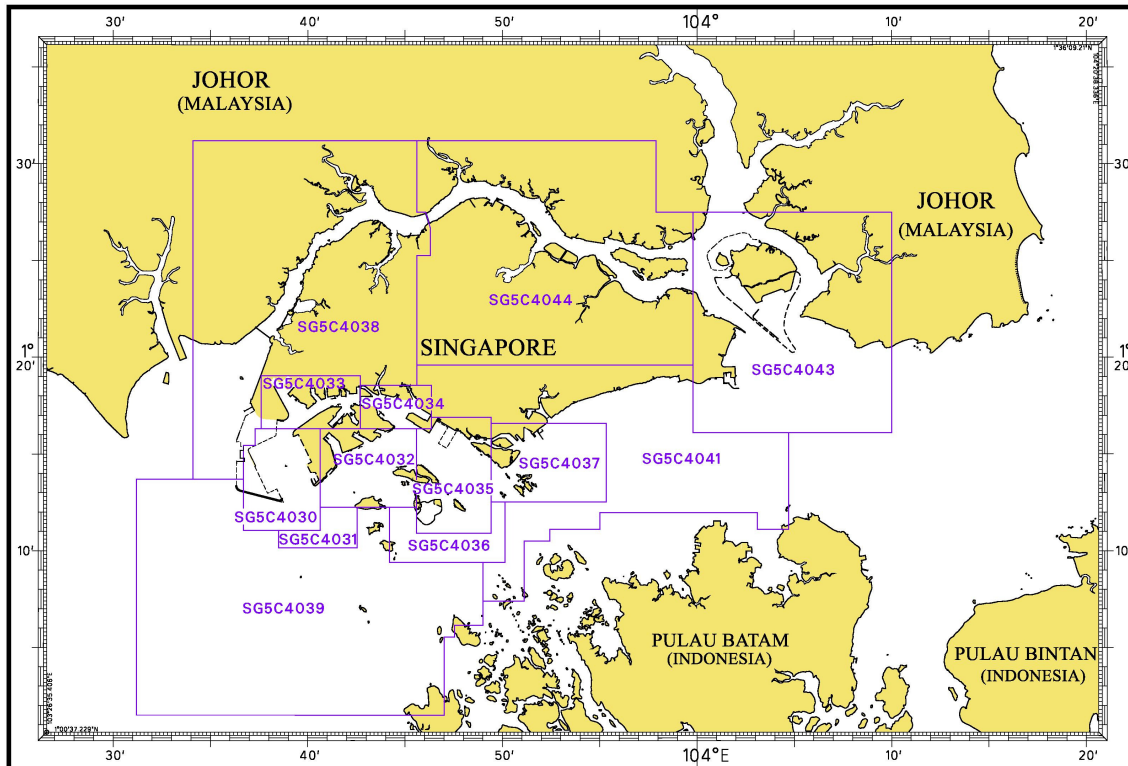
# I INDEX OF CHARTS AND PUBLICATIONS

## INDEX OF DUAL BADGED CHARTS



# I INDEX OF CHARTS AND PUBLICATIONS

## INDEX OF SINGAPORE ELECTRONIC NAVIGATIONAL CHART (ENC)



### COVERAGE OF SINGAPORE ELECTRONIC NAVIGATIONAL CHART (ENC)

ENC Name	ENC Coverage	ENC Edition
SG5C4030	West Jurong Anchorages and Temasek Fairway	5 <sup>th</sup> Edition (3/05/2012)
SG5C4031	Western Approaches to Jurong Island	5 <sup>th</sup> Edition (3/05/2012)
SG5C4032	Sinki Fairway	7 <sup>th</sup> Edition (3/05/2012)
SG5C4033	Tuas Bay, West Jurong Channel and Pesek Basin	5 <sup>th</sup> Edition (3/05/2012)
SG5C4034	East Jurong Channel, Pasir Panjang Terminal and West Keppel Fairway	10 <sup>th</sup> Edition (3/05/2012)
SG5C4035	Western Anchorages, Jong Fairway and Cruise Bay	12 <sup>th</sup> Edition (27/09/2012)
SG5C4036	Raffles Lighthouse to The Sisters	6 <sup>th</sup> Edition (3/05/2012)
SG5C4037	Keppel Harbour, Tanjong Pagar Terminal and Approaches	6 <sup>th</sup> Edition (3/05/2012)
SG5C4038	Johor Strait – Western Part	5 <sup>th</sup> Edition (3/05/2012)
SG5C4039	Western Approaches to Main Strait	5 <sup>th</sup> Edition (3/05/2012)
SG5C4041	Pulau Sebarok to Changi	6 <sup>th</sup> Edition (3/05/2012)
SG5C4043	Kuala Johor and Sungai Johor	8 <sup>th</sup> Edition (16/08/2012)
SG5C4044	Johor Strait – Eastern Part	8 <sup>th</sup> Edition (16/08/2012)

## II NEW PUBLICATIONS






### NEW EDITION CHART PUBLISHED ON JANUARY 2013

Chart Number : CHARTS FOR SMALL CRAFT  
Title : Singapore Strait and Adjacent Waterways – 2013 Edition  
Date Published : 10<sup>th</sup> January 2013  
Size of chart : 600 x 400 mm  
Remarks : The publication contains 12 Small Craft Charts and related nautical information bounded into an atlas. The symbols, abbreviations and term depicted on these charts are consistent with the International Hydrographic Organization Chart Standards and Specifications.  
(Refer MPA website [www.mpa.gov.sg/sites/global\\_navigation/publications/chart1.page](http://www.mpa.gov.sg/sites/global_navigation/publications/chart1.page))  
Symbols for the locations of pleasure craft facilities and areas for sea sport activities such as board sailing, dinghy sailing, keelboat sailing, power-boating and water-skiing are also included and highlighted in red.  
Chart of the same publication Edition 2011/2012 published on 20<sup>th</sup> January 2011 is superseded.



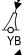
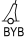






---

## II NOTICES TO MARINERS AND CHART CORRECTIONS

<b>GSP1/SP1</b>	7 Ed 3/05/12 Last NM 3/2013	(HD/HE025/145/2012)	<b>*NM 10/2013</b>
<b>Insert</b>	 <b>Q.Y CNB - 5</b>	1°19·49'N	104°02·38'E
		(HD/HE025/3/2012)	<b>*NM 11/2013</b>
<b>Insert</b>	 <b>Fl.R.6s Sentosa</b>	1°14·58'N	103°50·64'E
		(HD/HE025/144/2012)	<b>*NM 12/2013</b>
<b>Amend</b>	light, <b>Q.Y</b> for <i>Fl.Y.4s</i> at	1°18·72'N	104°02·40'E
		(HD/HE025/148/2012)	<b>*NM 13/2013</b>
<b>Move</b>	 <b>Fl.G.4s Jurong Dua</b> from:	1°14·86'N	103°39·52'E
	to:	1°14·67'N	103°39·61'E
		(HD/HE025/1/2013)	<b>*NM 14/2013</b>
<b>Delete</b>	 <b>Q.Y CNB - 1</b>	1°18·65'N	104°00·98'E
		(POCC, MPA)	<b>*NM 15/2013</b>
<b>Delete</b>	symbol of Harbour Master's Office and legend (91) (MRCC)	1°16·28'N	103°50·55'E
		(Admiralty Notice No. 4/457/2013)	<b>NM 16/2013</b>
<b>Delete</b>	 <b>Fl.R.4s No.4</b>	1°10·00'N	103°59·59'E




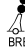
<b>201</b>	4 Ed 7/10/10 Last NM 99/2012	(Royal Malaysian Navy Notice No. 10/163/2012)	<b>NM 17/2013</b>
<b>Insert</b>	#	1°24·66'N	103°08·14'E
		(Royal Malaysian Navy Notice No. 1/36/2012)	<b>NM 18/2013</b>
<b>Insert</b>	 <b>Q</b>	1°27·20'N	103°02·70'E
	 <b>Q</b>	1°26·50'N	103°05·00'E
	 <b>Q</b>	1°26·00'N	103°06·50'E
	 <b>Q</b>	1°25·30'N	103°08·20'E
	 <b>Q(3)</b>	1°24·70'N	103°09·10'E
		(Marine Department Malaysia Notice No. 73, 76, 79/2012)	<b>NM 19/2013</b>
<b>Amend</b>	light to <b>Fl.5s30m15M</b>	1°23·40'N	103°07·90'E
<b>Delete</b>	legend (collapsed)	1°23·19'N	103°08·60'E


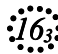
## II NOTICES TO MARINERS AND CHART CORRECTIONS


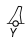

		<i>Fl(2)10s</i>	1°23'51"N	103°07'77"E	
					(Royal Malaysian Navy Notice No. 11/178/2012)
					<b>NM 20/2013</b>
<b>Delete</b>		<i>Q</i>	1°57'94"N	102°10'70"E	
<b>Delete</b>		<i>Q(6)+LFl.15s</i>	1°57'40"N	102°10'70"E	
		<i>VQ(3)5s</i>	1°57'70"N	102°10'92"E	
		<i>Q(9)15s</i>	1°57'70"N	102°10'28"E	
		<i>Wk</i>	1°57'70"N	102°10'70"E	
<hr/>					
<b>202</b>	6 Ed 24/09/09 Last NM 6/2013	(POCC, MPA)			<b>*NM 15/2013</b>
<b>Delete</b>	symbol of Harbour Master's Office		1°16'29"N	103°50'54"E	
					(Royal Malaysian Navy Notice No. 10/163/2012)
					<b>NM 17/2013</b>
<b>Insert</b>	#		1°24'66"N	103°08'14"E	
					(Royal Malaysian Navy Notice No. 1/36/2012)
					<b>NM 18/2013</b>
<b>Insert</b>		<i>Q</i>	1°26'00"N	103°06'50"E	
		<i>Q</i>	1°25'30"N	103°08'20"E	
		<i>Q(3)</i>	1°24'70"N	103°09'10"E	
					(Marine Department Malaysia Notice No. 73, 76, 79/2012)
					<b>NM 19/2013</b>
<b>Amend</b>	light to <b>Fl.5s30m15M</b>		1°23'40"N	103°07'90"E	
<b>Delete</b>	legend (collapsed)		1°23'19"N	103°08'60"E	
		<i>Fl(2)10s</i>	1°23'51"N	103°07'77"E	
					(Royal Malaysian Navy Notice No. 11/177/2012)
					<b>NM 21/2013</b>
<b>Insert</b>	working limit, dash line joining		1°20'57"N	104°08'14"E	
			1°19'06"N	104°07'48"E	
			1°17'86"N	104°07'32"E	
			1°19'05"N	104°14'06"E	
			1°21'37"N	104°13'86"E	

## II NOTICES TO MARINERS AND CHART CORRECTIONS

legend '*Work in progress (2012)*' centred at (shore)  
1°19'28"N    104°10'89"E

<b>500</b>	6 Ed 7/10/10 Last NM 2/2013	(Royal Malaysian Navy Notice No. 10/163/2012)	<b>NM 17/2013</b>
<b>Insert</b>	#	1°24'66"N	103°08'14"E
<b>Insert</b>	 <b>Q</b>	(Royal Malaysian Navy Notice No. 1/36/2012)	<b>NM 18/2013</b>
	 <b>Q</b>	1°26'00"N	103°06'50"E
	 <b>Q(3)</b>	1°25'30"N	103°08'20"E
		1°24'70"N	103°09'10"E
<b>Amend</b>	light to <b>Fl.5s30m15M</b>	(Marine Department Malaysia Notice No. 73, 76, 79/2012)	<b>NM 19/2013</b>
<b>Delete</b>	legend (collapsed)	1°23'40"N	103°07'90"E
	 <b>Fl(2)10s</b>	1°23'31"N	103°08'23"E
		1°23'51"N	103°07'77"E

<b>501</b>	6 Ed 3/05/12 Last NM 6/2013	(HD/HY/C00106812)	<b>*NM 22/2013</b>
<b>Replace</b>	 <b>Wk</b> with  <b>Wk</b>	1°12'08"N	103°48'22"E

<b>502</b>	6 Ed 3/05/12 Last NM 5/2013	(HD/HE025/147/2012)	<b>*NM 10/2013</b>
<b>Insert</b>	 <b>Q.Y CNB - 5</b>	1°19'49"N	104°02'38"E
		(HD/HE025/144/2012)	<b>*NM 12/2013</b>
<b>Amend</b>	light, <b>Q.Y</b> for <i>Fl.Y.4s</i> at	1°18'72"N	104°02'40"E
		(HD/HE025/1/2013)	<b>*NM 14/2013</b>
<b>Delete</b>	 <b>Q.Y CNB - 1</b>	1°18'65"N	104°00'98"E
		(Admiralty Notice No. 4/457/2013)	<b>NM 16/2013</b>
<b>Delete</b>	 <b>Fl.R.4s No.4</b>	1°10'00"N	103°59'59"E

**II**  
**NOTICES TO MARINERS AND CHART CORRECTIONS**

		(Royal Malaysian Navy Notice No. 11/177/2012)	<b>NM 21/2013</b>
<b>Insert</b>	working limit, dash line joining	1°20·57'N 1°19·06'N 1°17·86'N 1°19·05'N 1°21·37'N (shore)	104°08·14'E 104°07·48'E 104°07·32'E 104°14·06'E 104°13·86'E
<b>Insert</b>	legend ' <i>Work in progress (2012)</i> ' centred at	1°19·28'N	104°10·89'E

---

		(Royal Malaysian Navy Notice No. 11/177/2012)	<b>NM 21/2013</b>
<b>503</b>	4 Ed 1/04/10 Last NM 101/2012		
<b>Insert</b>	working limit, dash line joining	1°18·67'N (chart border) 1°19·05'N 1°21·37'N (shore)	104°11·89'E 104°14·06'E 104°13·86'E
	legend ' <i>Work in progress (2012)</i> ' centred at	1°19·76'N	104°13·02'E

---

**II**  
**TEMPORARY AND PRELIMINARY NOTICES**

**(NM 23T/2012) CITY TO CITY (C2C) SUBMARINE CABLE SYSTEM –  
C2C Segment 6 Cable System Repairs**

**Purpose :** Submarine cable repeater replacement at C2C Segment 6.  
The C2C Segment 6 repeater replacement is at 1° 21·09'N 104° 25·71'E.

**Work Vessel :** 'CS DURABLE'

**Call Sign :** V7DI8

**Work Dates :** With effect from 17<sup>th</sup> February 2013 to 9<sup>th</sup> March 2013.

**Duration of work :** The working vessel will only start and finish the repeater replacement within the stipulated period.

**Operating hours :** 24 hours, including Sunday and Public Holiday .

1. The submarine cable repeater replacement are carried out along the listed positions :

Position for C2C cable	(Co-ordinates: WGS84)		Remarks (Working hours)
	Latitude (N)	Longitude (E)	
Point A	1° 20·76'	104° 25·25'	24 hours
Point B	1° 21·37'	104° 26·11'	24 hours
Point F	1° 21·09'	104° 25·71'	24 hours

2. **Charts affected :** 202 and 503.

3. **Caution :** Mariners are advised  
a) to navigate with caution.  
b) not to anchor or trawl in the vicinity of the submarine working route.  
c) to give a wide berth from the work vessel.

**Source :** HD/DB67/1/2013.

---

## II TEMPORARY AND PRELIMINARY NOTICES

**(NM 24T/2012) ASIA PACIFIC GATEWAY SUBMARINE CABLE NETWORK (APG) – Cable Route Feasibility Survey.**

**Purpose :** The APG Cable Route Feasibility Survey shall be carried out within Sector 9 of the Traffic Separation Scheme of Singapore Strait; from the proximities of the Precautionary Area, and in the way of the East Bound Traffic Lane, thence to the South China Sea.

**Survey Vessel :** 'EGS EXPLORER'

**Call Sign :** V4YI

**Work Dates :** With effect from 1<sup>st</sup> February 2013 to 15<sup>th</sup> February 2013.

**Duration of work :** Within the stipulated period, the survey vessel will take up to 7 days, to complete the cable route feasibility survey.

**Operating hours :** Daily, from 0000 hrs to 2400 hours ( including Sundays and Public Holidays.)

1. **Cable Route Position List (RPL)**

The co-ordinates of the cable route survey are as follows,

RPL No.	Event	(Co-ordinates: WGS84)		Remarks (Working hours)
		Latitude (N)	Longitude (E)	
1	Stub Cable End	1° 15·49'	104° 04·77'	0700 hrs to 1900 hrs
2	Alter Course	1° 15·90'	104° 05·43'	0700 hrs to 1900 hrs
3	Alter Course	1° 15·89'	104° 08·46'	0700 hrs to 1900 hrs
4	Alter Course	1° 15·50'	104° 10·93'	0700 hrs to 1900 hrs
5	Alter Course	1° 15·88'	104° 12·00'	0700 hrs to 1900 hrs
6	Alter Course	1° 15·89'	104° 13·44'	0700 hrs to 1900 hrs
7	Alter Course	1° 16·29'	104° 13·97'	0700 hrs to 1900 hrs
8	Alter Course	1° 17·24'	104° 17·73'	0000 hrs to 2400 hrs
9	Alter Course	1° 16·76'	104° 18·46'	0000 hrs to 2400 hrs
10	Alter Course	1° 17·74'	104° 20·28'	0000 hrs to 2400 hrs
11	Alter Course	1° 18·10'	104° 21·76'	0000 hrs to 2400 hrs
12	Alter Course	1° 18·68'	104° 22·44'	0000 hrs to 2400 hrs
13	Alter Course	1° 19·17'	104° 22·60'	0000 hrs to 2400 hrs
14	Alter Course	1° 21·79'	104° 25·45'	0000 hrs to 2400 hrs
15	Alter Course	1° 22·71'	104° 25·41'	0000 hrs to 2400 hrs
16	Alter Course	1° 26·33'	104° 30·40'	0000 hrs to 2400 hrs
17	Alter Course	1° 26·55'	104° 30·68'	0000 hrs to 2400 hrs
18	Alter Course	1° 28·26'	104° 32·85'	0000 hrs to 2400 hrs

2. **Survey Corridor**

The survey Corridor is 250 metres on either side of the survey's route and the corridor's width is 500 metres.

3. **Charts affected :** 202 , 502, 503 and 4042.

4. **Caution :** Mariners are advised

a) to navigate with caution.

b) to give a wide berth when approaching the survey vessel.

**Source :** HD/DB67/2/2013.

### III NAVIGATIONAL INFORMATION

**\*(NM 25/2013) SINGAPORE PORT MARINE NOTICES**

The following Port Marine Notices have been shortlisted, as they would be of particular interest to mariners.

These notices can be accessed directly from MPA website:  
[www.mpa.gov.sg/sites/port\\_and\\_shipping/circulars\\_and\\_notices/port\\_marine\\_notices.page](http://www.mpa.gov.sg/sites/port_and_shipping/circulars_and_notices/port_marine_notices.page)

<b>PMN No.</b>	<b>Subject</b>
1/2013	Mooring buoys at Banyan Basin, Jurong Island.
2/2013	Submarine cable repair off Pulau Busing, Selat Sinki.
3/2013	Reclamation at Pulau Tekong.
5/2013	Soil investigation works off Tuas View.
6/2013	Marine construction works off Marina Barrage.
7/2013	Reclamation at Pasir Panjang Terminal and Pasir Panjang Wharves.
8/2013	Mooring and unmooring of vessels at mooring buoys, Pasir Panjang 3 and 4 Reclamation Area.
10/2013	Dredging works off Pasir Panjang Ferry Terminal.
11/2013	Maintenance dredging works at Horizon Terminal, Jurong Island.

---

**\*(NM 26/2013) SINGAPOREAN PRINT-ON-DEMAND (POD) CHARTS**

Print-On-Demand (POD) Charts are the most up-to-date paper nautical charts printed for navigational use. These nautical charts are produced in accordance with the International Hydrographic Organisation (IHO) chart specifications. These official nautical charts are continually updated to the latest Notices to Mariners before they are printed and sold to users.

These POD Charts include GSP1, SP1, 200, 201, 202, 500, 501, 502 and 503.

**BENEFITS TO OUR CUSTOMERS**

**Convenience**

Customers need not make numerous hand corrections to the nautical charts before use. In addition the updated POD Charts are more accurate and reliable than offset printed charts with hand corrections.

**Clarity**

Clarity in the presentation of updated information as compared to lithographic printed charts, where in some cases there are several overlapping corrections over existing information.

**Coverage**

The POD Charts cover the Malacca and Singapore Straits, from One Fathom Bank to Horsburgh Lighthouse.

---

**III**  
**AMENDMENTS TO PUBLICATIONS**

\*(NM 27/2013) UPDATING OF PUBLICATION "SINGAPORE PORT INFORMATION 2012/2013"

1. Page 196

**AGENTS FOR MARITIME AND PORT AUTHORITY OF SINGAPORE (MPA) PUBLICATIONS**

Insert the following:

**Agent's name** : Cornes Singapore Pte Ltd  
**Address** : 10 Anson Road  
 #23-06/6A International Plaza  
 Singapore 079903  
**Telephone** : +65 6223 8320  
**Fax** : +65 6223 8321  
**E-mail** : sales9850@cspl.sg  
**Internet Web Site** : <http://www.cornes-charts.com>

**Agent's name** : Kelvin Hughes (Singapore) Pte Ltd  
**Address** : 896 Dunearn Road  
 #03-05 Sime Darby Centre  
 Singapore 589472  
**Telephone** : +65 6545 9880  
**Fax** : +65 6545 8892  
**E-mail** : [Leslie.khoo@kelvinhughes.com.sg](mailto:Leslie.khoo@kelvinhughes.com.sg)  
**Internet Web Site** : <http://www.kelvinhughes.com>

2. Page 197

**MPA APPOINTED ELECTRONIC NAVIGATIONAL CHART (ENC) DISTRIBUTORS**

Amend ENC Distributor, **ChartWorld Gmbh** address to :  
**Atlantis Haus, Zirkusweg 1**  
**D-20359 Hamburg**  
**Germany**

3. Page 198

**MPA APPOINTED ELECTRONIC NAVIGATIONAL CHART (ENC) DISTRIBUTORS**

Delete the following:

<b>DISTRIBUTOR</b>	<b>ADDRESS</b>	<b>TELEPHONE/FAX NO./EMAIL/WEBSITE</b>
Vector Services Pte Ltd	196 Pandan Loop #06-29 Pantech Business Hub Singapore 128384	Tel. No.: +65 6777 3602 Fax No.: +65 6777 9203 Email: <a href="mailto:kwchoy@pacific.net.sg">kwchoy@pacific.net.sg</a>

**IV**  
**REPRINT OF RADIO NAVIGATIONAL WARNINGS**

The following Radio Navigational Warnings have been shortlisted, as they would be of particular interest to mariners.

TT071

REPORT OF A CAPSIZED SAMPAN AT APPROXIMATE POSITION 01°07'08"N 103°41'93"E.

TT173

VESSELS IN EAST JOHOR STRAIT ARE ADVISED TO NAVIGATE WITH CAUTION WHEN NEAR THE PROJECT AREAS OFF PULAU TEKONG, CHANGI AND MALANG PAPAN AS SHALLOW WATER AREAS EXIST. VESSELS ARE ADVISED TO KEEP LOOKOUT FOR TUGS AND BARGES NAVIGATING NEAR THE PROJECT AREAS AND PASSENGER FERRIES CROSSING BETWEEN CHANGI AND PULAU TEKONG AND VICINITY OF PASIR GUDANG.

TT961

VESSELS INTENDING TO CROSS THE TRAFFIC SEPARATION SCHEME(TSS) OR PRECAUTIONARY AREAS IN THE SINGAPORE STRAIT DURING THE HOURS OF DARKNESS ARE RECOMMENDED TO DISPLAY THE NIGHT SIGNALS CONSISTING OF 3 ALL-ROUND GREEN LIGHTS IN A VERTICAL LINE WITH EFFECT FROM 1ST JULY 2011 AT 0000UTC (0800SGT) AS DETAILED IN MARITIME AND PORT AUTHORITY OF SINGAPORE'S PORT MARINE CIRCULAR, 02 OF 2011 DATED 30 MAY 2011.

---

ISSUED BY SINGAPORE PORT OPERATIONS CONTROL CENTRE (as at 27<sup>th</sup> January 2013)

V  
**EXTRACT OF ADMIRALTY NOTICES TO MARINERS  
 FOR DUAL BADGED CHARTS**

These notices can also be accessed directly from UKHO Website:

[www.ukho.gov.uk/ProductsandServices/MaritimeSafety/Pages/NMPublic.aspx](http://www.ukho.gov.uk/ProductsandServices/MaritimeSafety/Pages/NMPublic.aspx)

**253 SINGAPORE – West Jurong Channel – Tuas View Southwards, Pulau Sebarok South-westwards and Pulau Bukom – Works. Buoyage. Depths. Berths. Dredged areas. Dredged depths.**

Source: Maritime and Port Authority of Singapore

**Chart 4030** [ *previous update 5445/12* ] WGS84 DATUM

Insert the accompanying block, showing new works, buoyage and amendments to depths, centred on: 1° 14'·960N., 103° 37'·263E.

**Chart 4031** [ *previous update 5445/12* ] WGS84 DATUM

Insert the accompanying block, showing new berths and amendments to dredged areas and depths, centred on: 1° 14'·015N., 103° 41'·010E.

**Chart 4032** [ *previous update 4803/12* ] WGS84 DATUM

Insert the accompanying block, showing new berths and amendments to dredged areas and depths, centred on: 1° 14'·010N., 103° 41'·005E.  
 Amend dredged depth to, **5.5m (2012)**, centred on: 1° 14'·290N., 103° 45'·568E.  
 dredged depth to, **10.9m (2012)**, centred on: 1° 14'·279N., 103° 45'·422E.

**Chart 4035** [ *previous update New Edition 27/09/2012* ] WGS84 DATUM

Insert depth **24** 1° 11'·582N., 103° 47'·307E.  
 Amend depth **28<sub>3</sub>** and extend 30m contour E to enclose (a) 1° 11'·314N., 103° 47'·514E.  
 dredged depth to, **11.6m (2012)**, centred on: 1° 13'·975N., 103° 46'·398E.  
 dredged depth to, **15.7m (2012)**, centred on: 1° 13'·675N., 103° 46'·692E.  
 dredged depth to, **3.0m (2012)**, centred on: 1° 13'·694N., 103° 46'·629E.  
 dredged depth to, **5.6m (2012)**, centred on: 1° 13'·677N., 103° 46'·644E.  
 dredged depth to, **5.5m (2012)**, centred on: 1° 14'·290N., 103° 45'·568E.  
 Delete depth **24<sub>5</sub>** 1° 11'·590N., 103° 47'·250E.  
 depth **29<sub>3</sub>** , adjacent to: (a) above

**Chart 4036** [ *previous update 2595/12* ] WGS84 DATUM

Insert depth **24** 1° 11'·582N., 103° 47'·307E.  
 depth **28<sub>3</sub>** and extend 30m contour E to enclose (a) 1° 11'·314N., 103° 47'·514E.  
 Delete depth **24<sub>6</sub>** 1° 11'·590N., 103° 47'·245E.  
 depth **29<sub>6</sub>** , close W of: (a) above

**Chart 4038** [ *previous update 5445/12* ] WGS84 DATUM

Insert the accompanying block, showing new works, buoyage and amendments to depths, centred on: 1° 14'·96N., 103° 37'·50E.

**V**  
**EXTRACT OF ADMIRALTY NOTICES TO MARINERS**  
**FOR DUAL BADGED CHARTS**

**253 SINGAPORE – West Jurong Channel – Tuas View Southwards, Pulau Sebarok South-westwards and Pulau Bukom – Works. Buoyage. Depths. Berths. Dredged areas. Dredged depths. (continued)**

**Chart 4039** [ *previous update 5722/12*] WGS84 DATUM

Insert	depth <b>24</b>	(a)	1° 11'·59N., 103° 47'·31E.
	depth <b>28<sub>3</sub></b> and enclosed by 30m contour	(b)	1° 11'·31N., 103° 47'·51E.
Delete	depth <b>24<sub>5</sub></b> , close W of:	(a)	above
	depth <b>29<sub>9</sub></b> enclosed by 30m contour, close SE of:	(b)	above

**Chart 4040** [ *previous update 5445/12*] WGS84 DATUM

Insert	the accompanying block, showing new works, buoyage and amendments to depths, centred on:		1° 14'·96N., 103° 37'·50E.
Insert	depth <b>24</b>	(a)	1° 11'·59N., 103° 47'·31E.
	depth <b>28<sub>3</sub></b> and enclosed by 30m contour	(b)	1° 11'·31N., 103° 47'·51E.
Delete	depth <b>24<sub>5</sub></b> , close W of:	(a)	above
	depth <b>29<sub>9</sub></b> enclosed by 30m contour, close SE of:	(b)	above

**Chart 4041** [ *previous update 4925/12*] WGS84 DATUM

Insert	depth <b>24</b>	(a)	1° 11'·59N., 103° 47'·31E.
	depth <b>28<sub>3</sub></b> and enclosed by 30m contour	(b)	1° 11'·31N., 103° 47'·51E.
Delete	depth <b>24<sub>5</sub></b> , close W of:	(a)	above
	depth <b>29<sub>9</sub></b> enclosed by 30m contour, close SE of:	(b)	above

**457 INDONESIA – Sumatera – Pulau Batam – Batuampar Westwards – Buoy.**

Source: Indonesian Notice 49/413/12

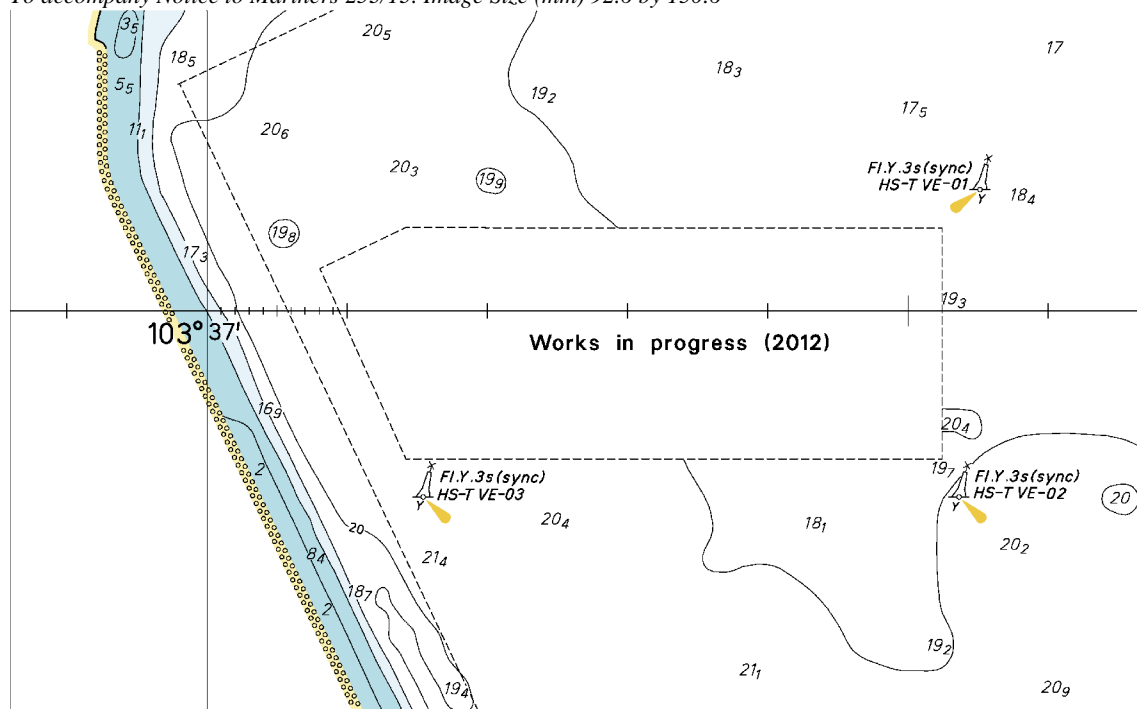
**Chart 4041** [ *previous update 253/13*] WGS84 DATUM

Delete	 <i>Fl.R.4s No. 4</i>		1° 10'·00N., 103° 59'·59E.
--------	----------------------------------------------------------------------------------------------------------	--	----------------------------

---

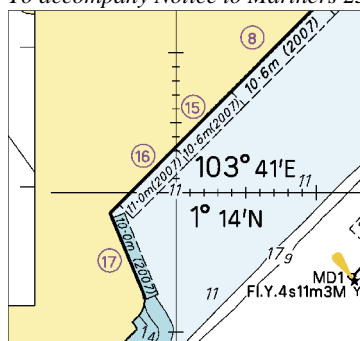
Updated to Admiralty Notices to Mariners Edition No. 5 of 2013 dated 31<sup>st</sup> January 2013.

To accompany Notice to Mariners 253/13. Image Size (mm) 92.6 by 150.6



Block for Chart No 4030

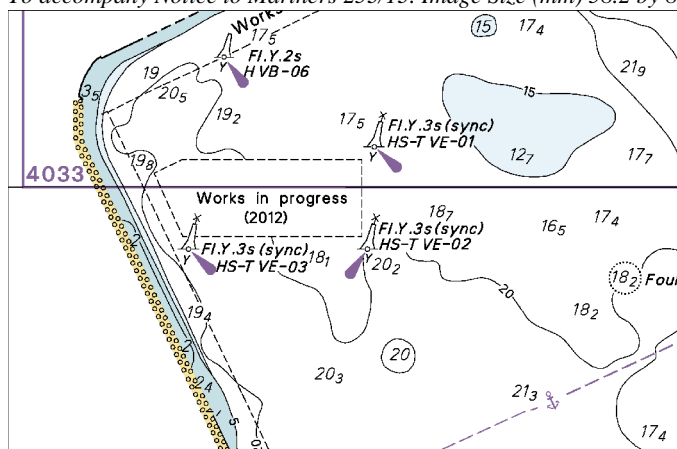
To accompany Notice to Mariners 253/13. Image Size (mm) 43.9 by 46.9



Block for Chart No 4031

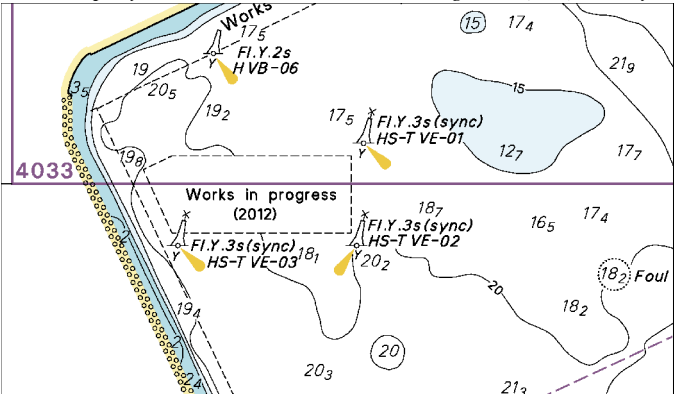


To accompany Notice to Mariners 253/13. Image Size (mm) 58.2 by 88.9



Block for Chart No 4038

To accompany Notice to Mariners 253/13. Image Size (mm) 51.9 by 88.9



Block for Chart No 4040

## MPA ENC DISTRIBUTORS

ENC DISTRIBUTOR	ADDRESS	TELEPHONE/FAX NO./EMAIL/WEBSITE
ChartWorld GmbH  ChartWorld Asia Pacific Pte Ltd.	Atlantic Haus, Zirkusweg 1 D-20359 Hamburg Germany  Frontech Centre 07-01, 15 Jalan Kilang Barat, Singapore 159357	Tel. No.: +49 40 853 58 6942 Fax No.: +49 40 853 58 6949 Email: <a href="mailto:sales@chartworld.com">sales@chartworld.com</a>  Tel No.: +65 6513 3500  Website : <a href="http://www.chartworld.com">http://www.chartworld.com</a> <a href="http://www.ecdis-as-a-service.com">http://www.ecdis-as-a-service.com</a>
DPM (Singapore) Pte Ltd	1 Maritime Square, #09-72 HarbourFront Centre, Singapore 099253	Tel. No.: +65 6270 4060 Fax No.: +65 6276 3858 Email: <a href="mailto:sales@dpmsingapore.com.sg">sales@dpmsingapore.com.sg</a> Website: <a href="http://www.dpmsingapore.com.sg">http://www.dpmsingapore.com.sg</a>
Maritime Information Systems (MARIS)  Maritime Information Systems AS (MARIS)	52, Telok Blangah Road #01-06, Telok Blangah House, Singapore 058809  Danholmen 25, 3128 Notteroy, Norway	Tel. No.: +65 6276 1472 Fax No.: +65 6276 1473 Email: : <a href="mailto:support@maris.sg">support@maris.sg</a> Website: <a href="http://www.maris.no">http://www.maris.no</a>  Tel. No.: +47 33 30 42 50 Fax No.: +47 33 30 42 51 Email: : <a href="mailto:sales@maris.no">sales@maris.no</a> Website: <a href="http://www.maris.no">http://www.maris.no</a>
Motion Smith	15 Jalan Kilang Barat #08-01/05 Frontech Centre, Singapore 159357	Tel. No.: +65 6220 5098 Fax No.: +65 6225 4902 Email: <a href="mailto:sales@motsmith.com">sales@motsmith.com</a> Website: <a href="http://www.motsmith.com">http://www.motsmith.com</a>
Transas Marine Pacific Pte Ltd	Cyber Centre 16 & 18 Jalan Kilang Barat Singapore 159358	Tel. No.: +65 6271 0200 Fax No.: +65 6271 7300 Email: <a href="mailto:dominic@transas.com.sg">dominic@transas.com.sg</a> Website: <a href="http://www.transas.com.sg">http://www.transas.com.sg</a>
Japan Hydrographic Association Electronic Charts Division	Daiichi Sogo Bldg, 6F 1-6-6, Hanedakuko, Ota-ku Tokyo 144-0041, Japan	Tel. No.: +81 3 5708 7093 Fax No.: +81 3 5708 7094 Email: <a href="mailto:shimizu-6kj@jha.jp">shimizu-6kj@jha.jp</a> Website: <a href="http://www.jha.or.jp/en/jha/">http://www.jha.or.jp/en/jha/</a>
Jeppesen Norway AS	P.O Box 212 , N-4371 Egersund, Norway	Tel No.: +47 51 46 4700 Fax No: +47 51 46 4701 Email: <a href="mailto:license.marine@jeppesen.com">license.marine@jeppesen.com</a> Website : <a href="http://www.jeppesen.com/marine">http://www.jeppesen.com/marine</a>
PRIMAR STAVANGER	Lervigsveien 36, P.O Box 60, N-4001 Stavanger, Norway	Tel. No.: +47 51 93 9500 Fax No.: +47 51 93 9501 Email: <a href="mailto:sales@ecc.no">sales@ecc.no</a> Website : <a href="http://www.primar.no">http://www.primar.no</a>
The United Kingdom Hydrographic Office	Admiralty Way, Taunton, Somerset, TA1 2DN United Kingdom	Tel. No.: +44 1823 33 7900 Fax No.: +44 1823 28 4077 Emails: <a href="mailto:ENCS.SalesReports@ukho.gov.uk">ENCS.SalesReports@ukho.gov.uk</a> Website: <a href="http://www.ukho.gov.uk">http://www.ukho.gov.uk</a>

**Chart Agents for the Maritime and Port Authority of Singapore**  
**Nautical Charts and Publications**

Please approach any of the appointed chart agents to purchase the Singapore Nautical Charts and Publications.

<b>CHART AGENT</b>	<b>ADDRESS</b>	<b>TELEPHONE/FAX NO./EMAIL/WEBSITE</b>
Cornes Singapore Pte Ltd	10 Anson Road #23-06/6A International Plaza Singapore 079903	Tel. No.: +65 6223 8320 Fax No.: +65 6223 8321 Email: sales9850@cspl.sg Website: <a href="http://www.cornes-charts.com">http://www.cornes-charts.com</a>
DPM (Singapore) Pte Ltd	1 Maritime Square, #09-72 HarbourFront Centre, Singapore 099253	Tel. No.: +65 6270 4060 Fax No.: +65 6276 3858 Email: sales@dpmsingapore.com.sg Website: <a href="http://www.dpmsingapore.com.sg">http://www.dpmsingapore.com.sg</a>
E.W. Liner Charts & Publications Pte Ltd	102F, Pasir Panjang Road, #08-01, Citilink Warehouse Complex, Singapore 118530	Tel. No.: +65 6323 0773 Fax No.: +65 6323 0775 Email: ewliner@singnet.com.sg Website: <a href="http://www.ewliner.com">http://www.ewliner.com</a>
Kelvin Hughes (Singapore) Pte Ltd	896 Dunearn Road #03-05 Sime Darby Centre Singapore 589472	Tel. No.: +65 6545 9880 Fax No.: +65 6545 8892 Email: leslie.khoo@kelvinhughes.com.sg Website: <a href="http://www.kelvinhughes.com">http://www.kelvinhughes.com</a>
Motion Smith	15 Jalan Kilang Barat #08-01/05 Frontech Centre Singapore 159357	Tel. No.: +65 6220 5098 (After office hours:+65 8163 9993) Fax No.: +65 6225 4902 Email: sales@motsmith.com Website: <a href="http://www.motsmith.com">http://www.motsmith.com</a>

## HYDROGRAPHIC NOTE - Instructions

1. Mariners are requested to notify the Chief Hydrographer, Maritime and Port Authority of Singapore, when new or suspected dangers to navigation are discovered, changes are observed in aids to navigation or where corrections to nautical publications may be necessary. Reports, which cannot be confirmed or are lacking in certain details should not be withheld.
2. Any ambiguities of time, positioning and depth should be stressed and any firm expectation of being able to check the information provided on a following voyage should be mentioned.
3. Mariners using satellite position fixing systems, eg. GPS, should provide details of equipment and datum used (where applicable). Where bearings (true or magnetic) are taken visually or by radar to fix a position, it should include more than two objects in order to provide a check on its accuracy. A position may also be defined by bearing and distance from a conspicuous object eg. beacon, lighthouse etc.
4. The note should include a tracing or a digital image of the chart used and the details should be clearly marked.
5. Echo sounders frequently register greater depths than the advertised maximum depth for the equipment, eg. a trace appearing at 50 metres may be in fact be 550 metres or even 1050 metres for equipment whose maximum depth is 500 metres. Erroneous depths caused by 2nd transmission error can usually be recognised by the following:
  - (a) the tracing being weaker than normal for the depth registered,
  - (b) the trace appearing to pass through the transmission line,
  - (c) the feathery nature of the trace.
6. Upon receipt of a hydrographic note, a Notice to Mariners may be issued. The sender's vessel or name is quoted as the source unless the same information is also received in foreign Notices to Mariners.
7. Reports of shoals, uncharted dangers and defects in aids to navigation may also be made to the appropriate Singapore Port Operations Control Centre on VHF Channels 10, 12, 14, 68 or 73.

**HYDROGRAPHIC NOTE**

To:

Chief Hydrographer  
Maritime and Port Authority of Singapore  
460 Alexandra Road PSA Building #20-00  
Singapore 119963

Tel : (65) 6375 1227  
Fax : (65) 6278 7646  
Email : [hydrographic@mpa.gov.sg](mailto:hydrographic@mpa.gov.sg)

**Sender's Contact Details** :

Date : .....

Name of Vessel : .....

Address of Sender : .....

Tel : ..... Fax : .....

Email : .....

**Nature of Observation** :

General Location : .....

Subject : .....

Position : Lat. .... Long. ....

Charts Used : .....

Date & Time of Observation : .....

Details : .....

.....

.....

Attachment : .....

**Equipment Used** :

Type of Position Fixing : ..... GPS / DGPS ..... Others : .....

Type of Echo Sounder : .....

Name and Signature : .....

Ship's/Company's Stamp : .....