



SINGAPOREAN NOTICES TO MARINERS

SECTION	CONTENT	Page
I	Index of Charts & Publications	1
II	New Publications	6
	Notices to Mariners and Chart Corrections	7
	Temporary and Preliminary Notices	9
III	Navigational Information	11
	Amendments to Publications	13
IV	Reprint of Radio Navigational Warnings	17
V	Extract of Admiralty Notices to Mariners for Dual Badged Charts	18

The monthly Notices to Mariners contain corrective information affecting charts published by the Hydrographic Department, Maritime and Port Authority of Singapore. The information contained in these Notices should be updated on the charts affected. Notices under Section II apply only to the particular Singaporean Chart(s) indicated.

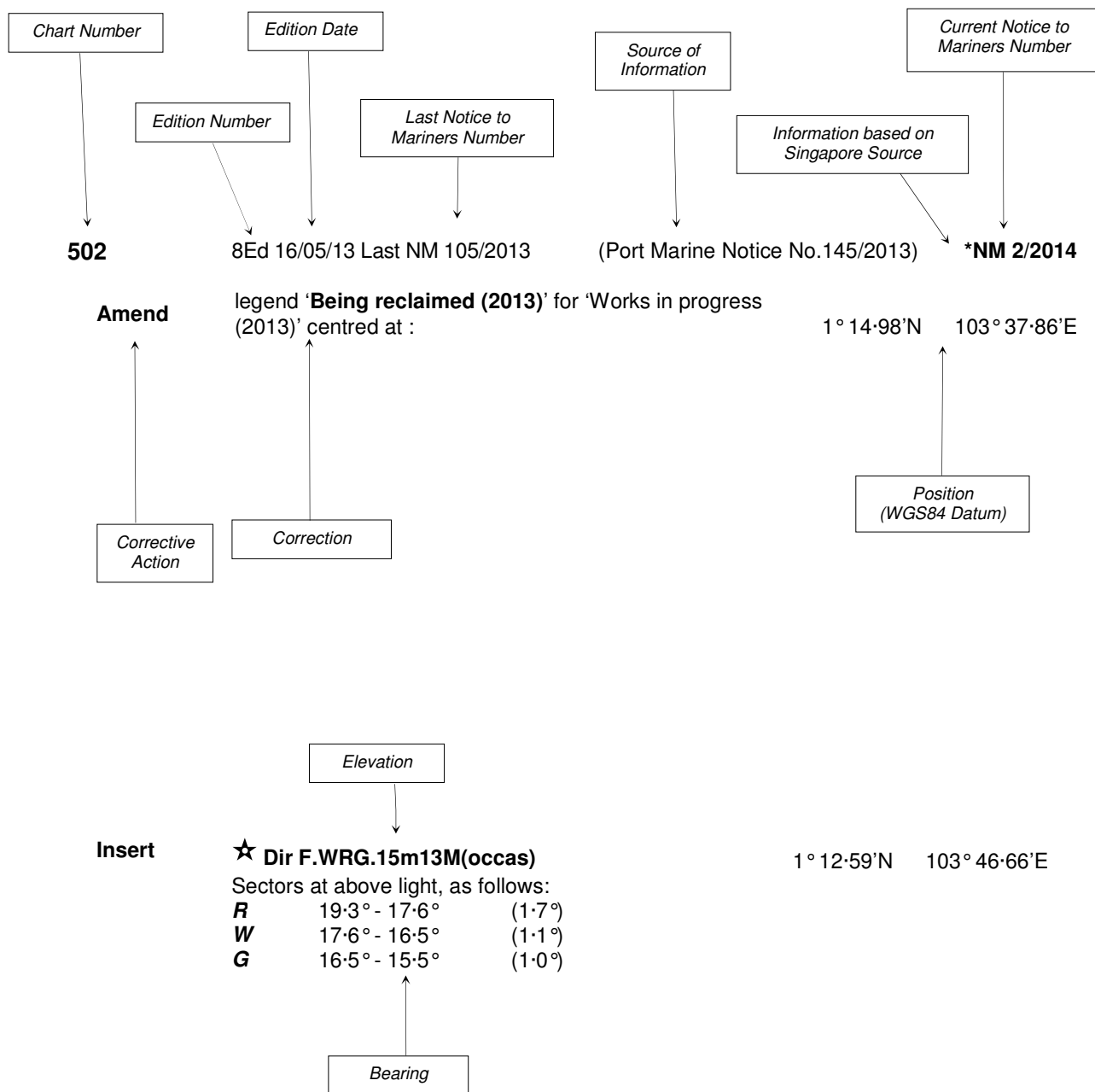
Mariners are requested to notify the Chief Hydrographer, Maritime and Port Authority of Singapore, immediately on the discovery of new dangers or suspected dangers to navigation and of changes or defects in aids to navigation. See Hydrographic Note on back page.

The monthly Singaporean Notices to Mariners can be accessed directly from the MPA website:
[www.mpa.gov.sg/sites/port_and_shipping/circulars_and_notices/singapore_notices_to_mariners\(ntm\).page](http://www.mpa.gov.sg/sites/port_and_shipping/circulars_and_notices/singapore_notices_to_mariners(ntm).page)

Hydrographic Department
Maritime and Port Authority of Singapore
460 Alexandra Road
#20-00 PSA Building
Singapore 119963
Tel: (65) 6375 1227
Fax: (65) 6278 7646

EXPLANATION OF FORMAT

The elements of a typical chart correction are explained below.



Notes:

- a) Notice to Mariners number followed by:
 - T** indicates a Temporary Notice (eg. *NM 3T/2014).
 - P** indicates a Preliminary Notice (eg. *NM 4P/2014).
- b) Bearings are true reckoned clockwise from 000° to 359°; those relating to lights are from seaward.
- c) Heights and elevations are above Mean High Water Springs.

I
INDEX OF CHARTS AND PUBLICATIONS

INDEX OF AFFECTED CHARTS

DESCRIPTION	NOTICE NO.	PAGE NO.
Index of Singaporean Charts	-	3
Index of Dual Badged Charts	-	4
Index of Singapore Electronic Navigational Chart (ENC)	-	5
New Edition Charts for Small Craft 2014	-	6
Singaporean GSP1/SP1	*7, *8, *9, *10	7
Singaporean Chart 200	11	7
Singaporean Chart 202	*9, 12	7
Singaporean Chart 501	*7, *9	7
Singaporean Chart 502	*7	8
Singaporean Chart 503	12	8
Temporary and Preliminary Notices	13P	9, 10
Singapore Port Marine Notices	*14	11
Singaporean Print-On-Demand (POD) Charts	*15	11, 12
Amendments to Publications	*16	13 to 16
Reprint of Radio Navigational Warnings	-	17
Extract of Admiralty Notices to Mariners for Dual Badged Charts	-	18
Singapore Electronic Navigational Chart (ENC) Distributors	-	19
Chart Agents for the Maritime and Port Authority of Singapore Nautical Charts and Publications	-	20

*Denotes information are based on Singaporean source.

I
INDEX OF CHARTS AND PUBLICATIONS

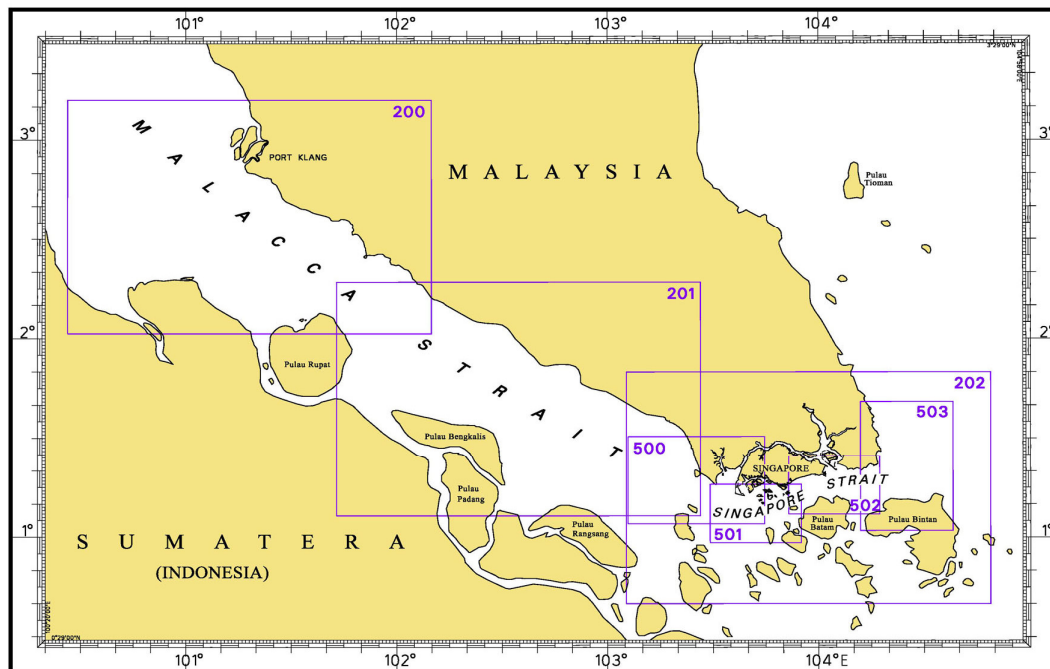
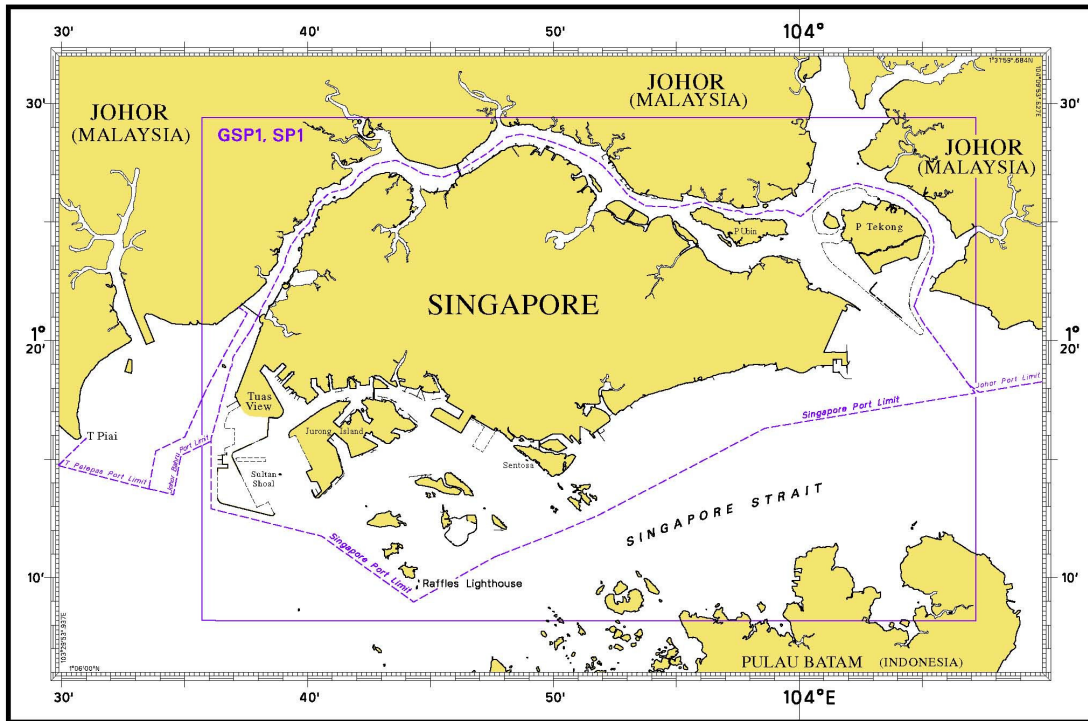
INDEX OF NOTICES

NOTICE NO.	DESCRIPTION	PAGE NO.
-	Index of Singaporean Charts	3
-	Index of Dual Badged Charts	4
-	Index of Singapore Electronic Navigational Chart (ENC)	5
-	New Edition Charts for Small Craft 2014	6
*7, *8, *9, *10	Singaporean Chart GSP1/SP1	7
11	Singaporean Chart 200	7
*9, 12	Singaporean Chart 202	7
*7, *9	Singaporean Chart 501	7
*7	Singaporean Chart 502	8
12	Singaporean Chart 503	8
13P	Temporary and Preliminary Notices	9, 10
*14	Singapore Port Marine Notices	11
*15	Singaporean Print-On-Demand (POD) Charts	11, 12
*16	Amendments to Publications	13 to 16
-	Reprint of Radio Navigational Warnings	17
-	Extract of Admiralty Notices to Mariners for Dual Badged Charts	18
-	Singapore Electronic Navigational Chart (ENC) Distributors	19
-	Chart Agents for the Maritime and Port Authority of Singapore Nautical Charts and Publications	20

* Denotes information are based on Singaporean source.

I INDEX OF CHARTS AND PUBLICATIONS

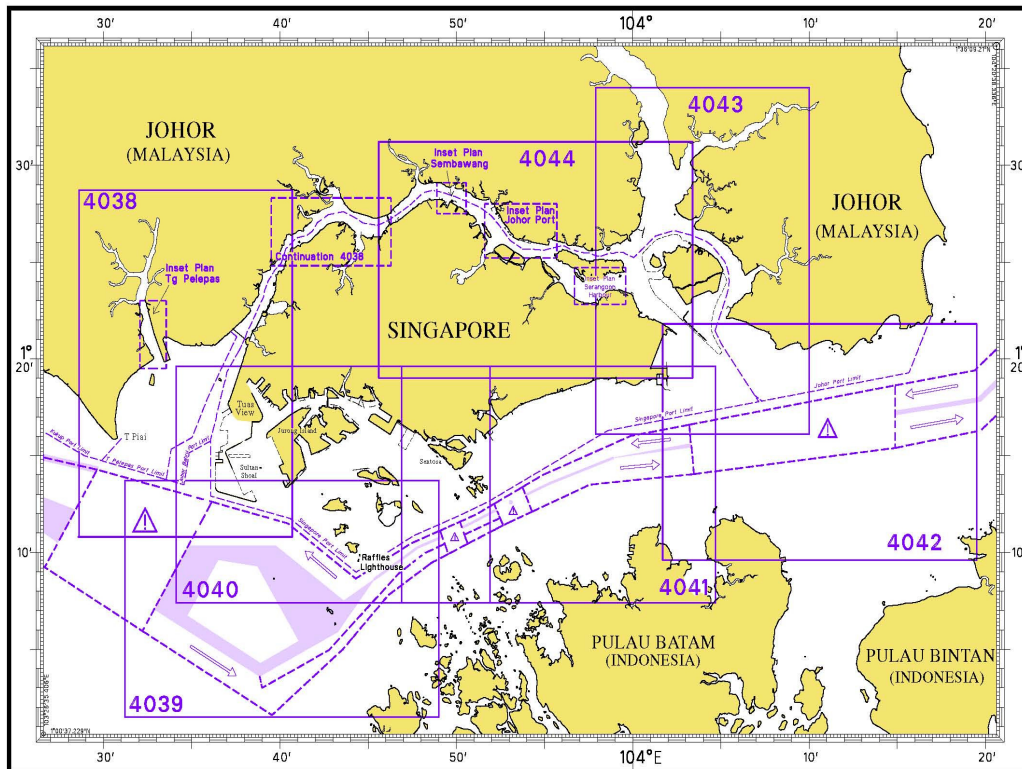
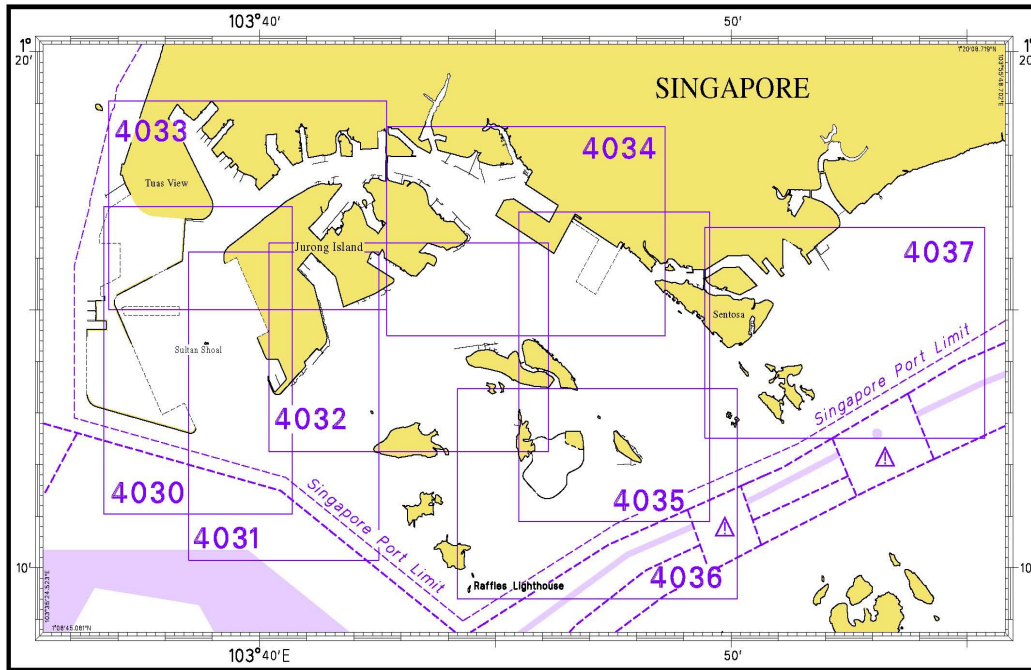
INDEX OF SINGAPOREAN CHARTS



Notes:
Updated SINGAPOREAN Charts are available through our Print-On-Demand (POD) Chart Service. For more information, refer to Section III – Navigational Information. These charts can be purchased from our authorised Chart Agents.

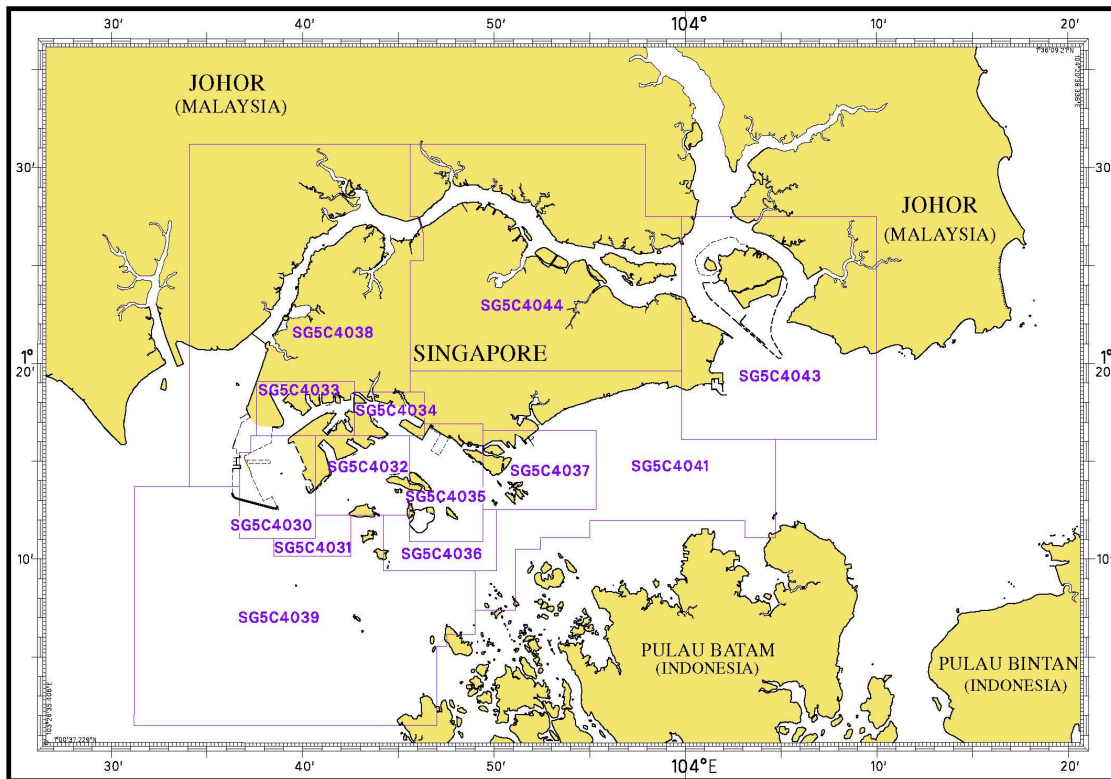
I INDEX OF CHARTS AND PUBLICATIONS

INDEX OF DUAL BADGED CHARTS



I INDEX OF CHARTS AND PUBLICATIONS

INDEX OF SINGAPORE ELECTRONIC NAVIGATIONAL CHART (ENC)



COVERAGE OF SINGAPORE ELECTRONIC NAVIGATIONAL CHART (ENC)





ENC Name	ENC Coverage	ENC Edition
SG5C4030	West Jurong Anchorages and Temasek Fairway	5 th Edition (3/05/2012)
SG5C4031	Western Approaches to Jurong Island	5 th Edition (3/05/2012)
SG5C4032	Sinki Fairway	7 th Edition (3/05/2012)
SG5C4033	Tuas Bay, West Jurong Channel and Pesek Basin	5 th Edition (3/05/2012)
SG5C4034	East Jurong Channel, Pasir Panjang Terminal and West Keppel Fairway	11 th Edition (11/04/2013)
SG5C4035	Western Anchorages, Jong Fairway and Cruise Bay	14 th Edition (26/09/2013)
SG5C4036	Raffles Lighthouse to The Sisters	6 th Edition (3/05/2012)
SG5C4037	Keppel Harbour, Tanjong Pagar Terminal and Approaches	7 th Edition (25/04/2013)
SG5C4038	Johor Strait – Western Part	6 th Edition (26/09/2013)
SG5C4039	Western Approaches to Main Strait	5 th Edition (3/05/2012)
SG5C4041	Pulau Sebarok to Changi	7 th Edition (9/05/2013)
SG5C4043	Kuala Johor and Sungai Johor	9 th Edition (29/08/2013)
SG5C4044	Johor Strait – Eastern Part	9 th Edition (29/08/2013)

II NEW PUBLICATIONS


NEW EDITION CHART PUBLISHED ON 2ND JANUARY 2014




Chart Number : CHARTS FOR SMALL CRAFT
Title : Singapore Strait and Adjacent Waterways – 2014 Edition
Date Published : 2nd January 2014
Size of chart : 600 x 400 mm
Remarks : The publication contains 12 Small Craft Charts and related nautical information bounded into an atlas. The symbols, abbreviations and term depicted on these charts are consistent with the International Hydrographic Organization Chart Standards and Specifications.
(Refer MPA website http://www.mpa.gov.sg/sites/global_navigation/publications/chart1.page)
Symbols for the locations of pleasure craft facilities and areas for sea sport activities such as board sailing, dinghy sailing, keelboat sailing, power-boating and water-skiing are also included and highlighted in red.
Chart of the same publication Edition 2013 published on 3rd January 2013 is superseded.

II
NOTICES TO MARINERS AND CHART CORRECTIONS


GSP1/SP1	8 Ed 6/05/13 Last NM 105/2013	(HD/HY/A00107013)	*NM 7/2014
Insert			1° 13·51'N 103° 51·68'E
		(Port Marine Notice No. 2/2014)	*NM 8/2014
Insert	the accompanying block, showing being reclaimed limit and buoys centred at :		1° 14·80'N 103° 38·05'E
		(HD/HE025/12/2014)	*NM 9/2014
Insert	 Q(6)+LFI.15s South Sebarok		1° 11·80'N 103° 48·38'E
Delete	 Sebarok (collapsed)		1° 11·84'N 103° 48·36'E
		(HD/HE025/13/2014)	*NM 10/2014
Delete	legend (collapsed) and symbol 'AIS' at Banyan Beacon		1° 13·35'N 103° 41·59'E
	 FI(2)10s Banyan		1° 13·32'N 103° 41·60'E

200	3 Ed 22/09/11 Last NM 2/2014	(Admiralty Notice No. 3/179/2014)	NM 11/2014
Insert	the accompanying block, showing new Cargo Transhipment Area, submarine cables, depths and obstruction centred at :		2° 20·00'N 102° 00·00'E

202	7 Ed 26/09/13 Last NM 105/2013	(HD/DB67/2/2014)	NM 12/2014
Insert	light FI(2)10s at		1° 27·78'N 104° 27·19'E
		(HD/HE025/12/2014)	*NM 9/2014
Delete	 (collapsed)		1° 11·84'N 103° 48·36'E

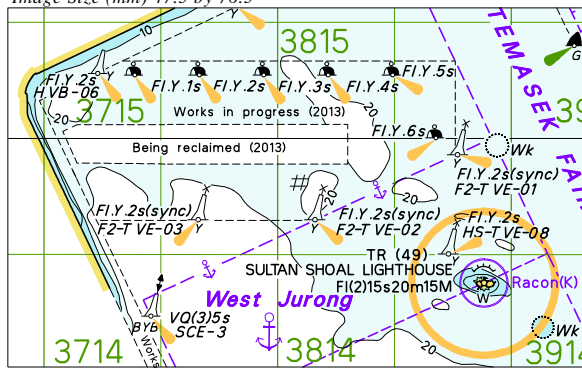
501	6 Ed 3/05/12 Last NM 3/2014	(HD/HY/A00107013)	*NM 7/2014
Insert			1° 13·51'N 103° 51·68'E
		(HD/HE025/12/2014)	*NM 9/2014
Insert	 Q(6)+LFI.15s South Sebarok		1° 11·80'N 103° 48·38'E
Delete	 Sebarok (collapsed)		1° 11·84'N 103° 48·36'E

II
NOTICES TO MARINERS AND CHART CORRECTIONS

502	6 Ed 3/05/12 Last NM 99/2013	(HD/HY/A00107013)	*NM 7/2014
Insert			1° 13·51'N 103° 51·68'E

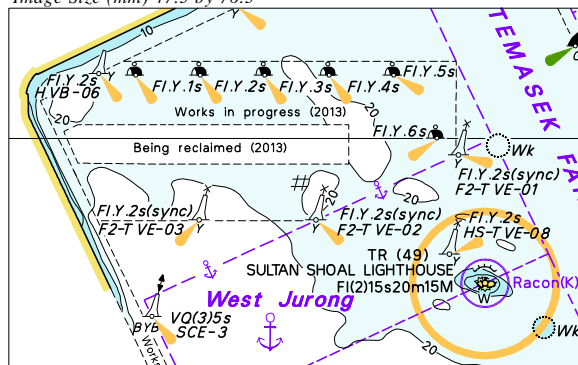
503	4 Ed 1/04/10 Last NM 94/2013	(HD/DB67/2/2014)	NM 12/2014
Insert	light <i>Fl(2)10s</i> at		1° 27·78'N 104° 27·19'E

To accompany Notices to Mariners 08/2014
Image Size (mm) 47.5 by 76.3



Block for Chart GSP1

To accompany Notices to Mariners 08/2014
Image Size (mm) 47.5 by 76.3



Block for Chart SP1

II TEMPORARY AND PRELIMINARY NOTICES

(NM 13P/2014)

ASIA PACIFIC GATEWAY SUBMARINE CABLE NETWORK (APG) - Post-Lay Inspection and Burial (PLIB)

Purpose : The APG submarine cable Post-Lay Inspection and Burial (PLIB) shall be executed within Sector 9 of the Traffic Separation Scheme (TSS) of the Singapore Strait; from the proximities of the Precautionary Area, and in way of the East Bound Traffic Lane, thence to the South China Sea.

The vessel during the PLIB activity shall have her speed over the track at between 00 knot to maximum of 01 knot.

Work Vessel : 'MIRAERO'

Call Sign : DSRB3

Date of work : With effect from 1st February 2014 to 10th March 2014.

Duration of work : The PLIB vessel will require up to this period to complete the Post-Lay Inspection and Burial Works.

Operating hours : From 0700 hours to 1900 hours, (including Sundays and Public Holidays). For Area 01 and Area 02.

From 0000 hours to 2400 hours, (including Sundays and Public Holidays). For Area 03.

1. Working Areas

The designated working areas' position co-ordinates (WGS84 Datum) are tabulated below :

Area	From		To		Remarks (Working Hours)
	Latitude (N)	Longitude (E)	Latitude (N)	Longitude (E)	
01	01° 15.586'	104° 04.554'	01° 15.867'	104° 08.757'	Daily, from 0700 to 1900 Hrs
02	01° 15.469'	104° 10.945'	01° 17.123'	104° 17.223'	Daily, from 0700 to 1900 Hrs
03	01° 17.195'	104° 17.952'	01° 22.664'	104° 25.366'	Daily, from 0000 to 2400 Hrs

2. Post-Lay Inspection and Burial (PLIB) Route Position List (RPL)

The PLIB works has its track's Centre Line position co-ordinates, as follows :

Position	(Co-ordinates: WGS84)		Remarks (Working Hours)
	Latitude (N)	Longitude (E)	
Start Point	01° 15.586'	104° 04.554'	Daily, from 0700 to 1900 Hrs
End Point	01° 16.031'	104° 05.175'	Daily, from 0700 to 1900 Hrs
Start Point	01° 16.109'	104° 05.577'	Daily, from 0700 to 1900 Hrs
End Point	01° 16.095'	104° 06.422'	Daily, from 0700 to 1900 Hrs
Start Point	01° 16.105'	104° 06.596'	Daily, from 0700 to 1900 Hrs
End Point	01° 16.124'	104° 07.035'	Daily, from 0700 to 1900 Hrs
Start Point	01° 16.124'	104° 07.035'	Daily, from 0700 to 1900 Hrs
End Point	01° 16.052'	104° 07.688'	Daily, from 0700 to 1900 Hrs
Start Point	01° 16.052'	104° 07.688'	Daily, from 0700 to 1900 Hrs
End Point	01° 16.056'	104° 07.957'	Daily, from 0700 to 1900 Hrs
Start Point	01° 16.056'	104° 07.957'	Daily, from 0700 to 1900 Hrs
End Point	01° 15.999'	104° 08.579'	Daily, from 0700 to 1900 Hrs
Start Point	01° 15.999'	104° 08.579'	Daily, from 0700 to 1900 Hrs
End Point	01° 15.867'	104° 08.757'	Daily, from 0700 to 1900 Hrs
Start Point	01° 15.469'	104° 10.945'	Daily, from 0700 to 1900 Hrs
End Point	01° 15.821'	104° 11.637'	Daily, from 0700 to 1900 Hrs

II
TEMPORARY AND PRELIMINARY NOTICES

Position	(Co-ordinates: WGS84)		Remarks (Working Hours)
	Latitude (N)	Longitude (E)	
Start Point	01° 15.816'	104° 12.202'	Daily, from 0700 to 1900 Hrs
End Point	01° 15.815'	104° 12.349'	Daily, from 0700 to 1900 Hrs
Start Point	01° 15.816'	104° 12.767'	Daily, from 0700 to 1900 Hrs
End Point	01° 15.816'	104° 12.840'	Daily, from 0700 to 1900 Hrs
Start Point	01° 15.816'	104° 12.840'	Daily, from 0700 to 1900 Hrs
End Point	01° 17.121'	104° 17.222'	Daily, from 0700 to 1900 Hrs
Start Point	01° 17.121'	104° 17.222'	Daily, from 0700 to 1900 Hrs
End Point	01° 17.123'	104° 17.223'	Daily, from 0700 to 1900 Hrs
Start Point	01° 17.195'	104° 17.952'	Daily, from 0000 to 2400 Hrs
End Point	01° 17.199'	104° 17.955'	Daily, from 0000 to 2400 Hrs
Start Point	01° 17.199'	104° 17.955'	Daily, from 0000 to 2400 Hrs
End Point	01° 17.075'	104° 18.056'	Daily, from 0000 to 2400 Hrs
Start Point	01° 17.075'	104° 18.056'	Daily, from 0000 to 2400 Hrs
End Point	01° 17.712'	104° 20.526'	Daily, from 0000 to 2400 Hrs
Start Point	01° 17.722'	104° 20.620'	Daily, from 0000 to 2400 Hrs
End Point	01° 18.001'	104° 21.329'	Daily, from 0000 to 2400 Hrs
Start Point	01° 17.994'	104° 21.385'	Daily, from 0000 to 2400 Hrs
End Point	01° 18.043'	104° 21.689'	Daily, from 0000 to 2400 Hrs
Start Point	01° 18.373'	104° 22.124'	Daily, from 0000 to 2400 Hrs
End Point	01° 20.343'	104° 23.656'	Daily, from 0000 to 2400 Hrs
Start Point	01° 20.534'	104° 23.990'	Daily, from 0000 to 2400 Hrs
End Point	01° 20.567'	104° 24.040'	Daily, from 0000 to 2400 Hrs
Start Point	01° 22.314'	104° 25.333'	Daily, from 0000 to 2400 Hrs
End Point	01° 22.661'	104° 25.365'	Daily, from 0000 to 2400 Hrs
Start Point	01° 22.661'	104° 25.365'	Daily, from 0000 to 2400 Hrs
End Point	01° 22.664'	104° 25.366'	Daily, from 0000 to 2400 Hrs

3. **Working Corridor :**
The working corridor's width is 250 metres on either side of the PLIB route centre line; the PLIB working corridor's is therefore 500 metres width.
4. **Charts affected :** GSP1, SP1, 202, 502, 503, 4041 and 4042.
5. **Caution :** Mariners are advised
a) to navigate with caution.
b) to give a wide berth when approaching the Cable Laying and Burial vessel.

Source : HD/DB67/16/2013.

III NAVIGATIONAL INFORMATION

***(NM 14/2014) SINGAPORE PORT MARINE NOTICES**

The following Port Marine Notices have been shortlisted, as they would be of particular interest to mariners.

These notices can be accessed directly from MPA website:
www.mpa.gov.sg/sites/port_and_shipping/circulars_and_notices/port_marine_notices.page

PMN No.	Subject
168/2013	Cone penetration test for coastal development off Tuas View.
171/2013	Repair of floating sea barrier off Poyan Reservoir, East of Tuas Checkpoint Bridge.
172/2013	Dredging works at Keppel Fels Shipyard off West Jurong Channel.
173/2013	Dredging works at Benoi Basin.
174/2013	Proposed deepening of berths P25 & P26 at Pasir Panjang Terminals Phase 3 & 4.
175/2013	Dredging works at Pioneer Shipyard off West Jurong Channel.
177/2013	Soil investigation work at Tuas View Extension.
2/2014	Mooring and unmooring of vessels at mooring buoys at Tuas View, off Temasek Fairway and proposed construction of an offshore containment Bund off Tuas View.
4/2014	Reclamation at Pulau Tekong.
9/2014	Repair of Floating Sea Barrier off Pasir Ris Park, Serangoon Harbour.
10/2014	Reclamation at Pasir Panjang Terminal and Pasir Panjang Wharves.
11/2014	Marine construction works off Marina Barrage.
12/2014	Repair work at Shell Seraya Terminal, Jurong Island.

***(NM 15/2014) SINGAPOREAN PRINT-ON-DEMAND (POD) CHARTS**

Print-On-Demand (POD) Charts are the most up-to-date paper nautical charts printed for navigational use. These nautical charts are produced in accordance with the International Hydrographic Organisation (IHO) chart specifications. These official nautical charts are continually updated to the latest Notices to Mariners before they are printed and sold to users.

These POD Charts include 200, 201, 202, 500, 501, 502 and 503.

BENEFITS TO OUR CUSTOMERS

Convenience

Customers need not make numerous hand corrections to the nautical charts before use. In addition the updated POD Charts are more accurate and reliable than offset printed charts with hand corrections.

III
NAVIGATIONAL INFORMATION

Clarity

Clarity in the presentation of updated information as compared to lithographic printed charts, where in some cases there are several overlapping corrections over existing information.

Coverage

The POD Charts cover the Malacca and Singapore Straits, from One Fathom Bank to Horsburgh Lighthouse.

III AMENDMENTS TO PUBLICATIONS

*(NM 16/2014) UPDATING OF PUBLICATION "SINGAPORE PORT INFORMATION 2014/2015"

1. Page 50
Amend the following:

Part B COMMUNICATION CHANNELS FOR PILOTAGE, TOWAGE AND WATERBOATS SERVICES AND OIL TERMINALS

- a) PILOTAGE, TOWAGE AND WATER

VHF CHANNELS FOR PILOTAGE, TUG AND WATERBOATS SERVICES			
STATIONS	CHANNEL	FREQUENCY (MHz)	USAGE
SINGAPORE PILOTS	20	157.000 161.600	Requesting for pilotage service and pilotage information.
TUG DEPLOYMENT/ WATERBOATS	17	156.850	Requesting for tug service, and supply of water to vessels at anchor.

Note: With effect from 0900 hrs (Local Time) on 3 Mar 2014, VHF Channel 61 will migrate to VHF Channel 17 (156.850 MHz). VHF Channel 61 will cease to be operational.

Source: HD/DB67/01/2014

2. Page 109

DEPTHS OF NAVIGATIONAL CHANNELS AND FAIRWAYS

Amend the following:

LOCATIONS		DEPTHS (m)	REMARKS
Sinki Fairway	Selat Sinki (dredged channel)	18.1	Note: A high spot of 11.4m exists approximately 200.2° x 616m from Pandan Beacon
	Selat Pandan	15.0	Note: A high spot of 14.8m exists approximately 291.2° x 469m from Pandan Beacon
East Jurong Channel	Deep water channel	16.8	Note: 15.0m high spot off Seraya Buoy
	Out bound channel	12.8	-

Source: Berth List and Controlling Depth

3. Page 138

CHARACTERISTICS OF AIDS TO NAVIGATION - EAST JURONG CHANNEL

Insert the following:

Name of Beacon/Buoy	Position Lat. N Long. E Deg Min	Structure Colour & Shape	Light Characteristic	Owner
PLP-1 Beacon	01 17.279 103 43.624	Yellow spar with 'X' topmark	Fl.Y.2s4m4M	Pacific Light Power Pte Ltd

Source: HD/HE025/148/2013

III AMENDMENTS TO PUBLICATIONS

4. Page 141

CHARACTERISTICS OF AIDS TO NAVIGATION - SINKI FAIRWAY

Insert the following:

Name of Beacon/Buoy	Position Lat. N Long. E Deg Min	Structure Colour & Shape	Light Characteristic	Owner
Banyan Beacon	01 13.346 103 41.585	Double black spheres, on black tubular tower with red horizontal band pivoted at base with radar reflector, buoyant beacon	Fl(2)10s11m5M	MPA

Source: HD/HE025/13/2014

Delete the following:

Name of Beacon/Buoy	Position Lat. N Long. E Deg Min	Structure Colour & Shape	Light Characteristic	Owner
Banyan Buoy	01 13.320 103 41.593	Double black spheres, one above the other topmark, black with one wide broad band pillar	Fl(2)10s	MPA

Source: HD/DB67/3/2014

5. Page 146

Insert the following:

CHARACTERISTICS OF AIDS TO NAVIGATION - JONG FAIRWAY

Name of Beacon/Buoy	Position Lat. N Long. E Deg Min	Structure Colour & Shape	Light Characteristic	Owner
South Sebarok Buoy	01 11.799 103 48.383	Double black cones topmark points downward on yellow black pillar	Q(6)W+LFl.W.15s	MPA

Source: HD/HE025/12/2014

III AMENDMENTS TO PUBLICATIONS

Delete the following:

Name of Beacon/Buoy	Position Lat. N Long. E Deg Min	Structure Colour & Shape	Light Characteristic	Owner
Sebarok Beacon	01 11.838 103 48.356	Red cylinder on red tubular tower on red cylindrical base (collapsed)	Unlit	MPA

Source: Hydrographic Department, MPA.

6. Page 153

CHARACTERISTICS OF AIDS TO NAVIGATION - SERANGOON HARBOUR

Insert the following:

Name of Beacon/Buoy	Position Lat. N Long. E Deg Min	Structure Colour & Shape	Light Characteristic	Owner
CAFHI 1 Buoy	01 23.455 103 59.892	Yellow pillar with 'X' topmark	Fl.Y.2s	CAFHI

Source: HD/HE025/1/2014

7. Page 158

Amend the following:

Name of Beacon/Buoy	Position Lat. N Long. E Deg Min	Structure Colour & Shape	Light Characteristic	Owner
Sultan Shoal Lighthouse	01 14.377 103 38.884	White round tower on 2 storey dwelling 21m. Radar Reflector, Racon Code 'K' (3 & 10cm)	Fl(2)W.15s20m15M	MPA

Source: HD/HE025/216/2013

8. Page 169 – Item 14

JURONG ISLAND (EXXONMOBIL ASIA PACIFIC PTE LTD)(1°13.8'N, 103°40.9'E)

Amend the following:

Berth	Length of Berth	Depth Alongside (Year Surveyed)	Controlling Depth In Approaches
OVL2	445m	24.5m (2013)	22.5m

Source: HD/HY Code D00104313

III
AMENDMENTS TO PUBLICATIONS

9. Page 170 – Item 15

JURONG ISLAND (EXXONMOBIL ASIA PACIFIC PTE LTD)(1°16.8'N, 103°41.5'E)

Amend the following:

Berth	Length of Berth	Max LOA	Depth Alongside (Year Surveyed)	Controlling Depth In Approaches
Solid Handling Pier	252m	180m	11.4m (2013)	12.1m

Source: HD/HY Code E00107313

10. Page 170 – Item 16

**JURONG – TANJONG SAKUNYIT & JURONG ISLAND (EXXONMOBIL ASIA PACIFIC PTE LTD)
(1°17.9'N, 103°41.3'E)**

Amend the following:

Berth	Length of Berth	Max LOA	Depth Alongside (Year Surveyed)	Controlling Depth In Approaches
1	346m	280m	12.3m (2013)	12.1m
2	230m	250m	12.3m (2013)	12.1m
3	230m	135m	10.8m (2013)	12.1m
4	145m	125m	8.6m (2013)	6.3m
5	300m	250m	14.7m (2013)	12.1m
6	130m	120m	8.9m (2013)	7.0m (approx. 100m south of berth)
7	286m	246m	14.8m (2013)	12.1m
8	132m	148m	13.0m (2013)	12.1m
9	132m	148m	11.5m (2013)	5.9m

Source: HD/HY Code H00102013, H00102113, H00102213

11. Page 175 – Item 31

PULAU BUKOM (SHELL REFINERY)(1°14.0'N, 103°46.1'E)

Amend the following:

Single Buoy Mooring	Radius of Swinging Circle	Depth Alongside (Year Surveyed)	Controlling Depth In Approaches
Shell SBM	457m	24.0m (2013)	22.8m

Source: HD/HY Code F00108213

IV
REPRINT OF RADIO NAVIGATIONAL WARNINGS

The following Radio Navigational Warnings have been shortlisted, as they would be of particular interest to mariners.

TT026 (AMENDED 0N 07 OCT 13)

TUAS RECLAMATION WORKING AREA AT WESTERN PART OF SINGAPORE PORT ARE MARKED BY BUOYS (REF. PMN: 54/2013, 119/2013).

TT076 (AMENDED 060650Z)

RACON DELTA BUOY Q(6)LF15S IN POSITION LAT 01°03.781'N LONG 103°38.770'E HAS BEEN REMOVED FOR MAINTENANCE.

TT112

GERITA BEACON FI(2)10S IN POSITION LAT 01°13.417'N LONG 103°43.483'E IS REPORTED DAMAGED. VESSELS TO NAVIGATE WITH CAUTION.

TT117

BUFFALO ROCK BUOY FL(2)5S IN THE DEEP WATER ROUTE OF SINGAPORE STRAIT IN POSITION LAT 01°09.85'N LONG 103°48.10'E IS UNLIT.

TT135

RACON TK Q(6) + LFI 15 SECS IN POSITION LAT 01°05.960'N LONG 103°43.210'E IS REPORTED UNLIT.

TT149

EASTERN BUOY FL (R) 5S IN POSITION LAT 01°17.86'N LONG 104°05.896'E IS REPORTED MISSING. ALL VESSELS IN THE VICINITY ARE ADVISED TO NAVIGATE WITH CAUTION.

TT150

REPORT OF PARTLY SUBMERGED VESSEL AT POSITION LAT 01°06.26'N LONG 103°46.54'E SINCE 19 JAN 14. VESSELS ADVISED TO KEEP A SHARP LOOKOUT AND NAVIGATE WITH CAUTION.

TT151

BATU BERHANTI ISOLATED DANGER BUOY FL(2)5S IN POSITION LAT 01°11.76'N LONG 103°52.51'E IS REPORTED MISSING.

TT152

SURVEY VESSEL 'MIRAERO' WILL BE CARRYING OUT OPERATIONS ON THE SUBMARINE CABLE IN THE FOLLOWING AREA;

- 1) 01°15.58'N 104°04.55'E TO 01°15.86'N 104°08.75'E
- 2) 01°15.46'N 104°10.94'E TO 01°17.12'N 104°17.22'E
- 3) 01°17.19'N 104°19.95'E TO 01°22.66'N 104°25.36'E

VESSELS ADVISED TO KEEP A LOOKOUT, KEEP CLEAR AND NAVIGATE WITH CAUTION.

TT173

VESSELS IN EAST JOHOR STRAIT ARE ADVISED TO NAVIGATE WITH CAUTION WHEN NEAR THE PROJECT AREAS OFF PULAU TEKONG, CHANGI AND MALANG PAPAN AS SHALLOW WATER AREAS EXIST. VESSELS ARE ADVISED TO KEEP LOOKOUT FOR TUGS AND BARGES NAVIGATING NEAR THE PROJECT AREAS AND PASSENGER FERRIES CROSSING BETWEEN CHANGI AND PULAU TEKONG AND VICINITY OF PASIR GUDANG.

TT961

VESSELS INTENDING TO CROSS THE TRAFFIC SEPARATION SCHEME(TSS) OR PRECAUTIONARY AREAS IN THE SINGAPORE STRAIT DURING THE HOURS OF DARKNESS ARE RECOMMENDED TO DISPLAY THE NIGHT SIGNALS CONSISTING OF 3 ALL-ROUND GREEN LIGHTS IN A VERTICAL LINE WITH EFFECT FROM 1ST JULY 2011 AT 010000UTC (0800SGT) AS DETAILED IN MARITIME AND PORT AUTHORITY OF SINGAPORE'S PORT MARINE CIRCULAR, 02 OF 2011 DATED 30 MAY 2011.

ISSUED BY SINGAPORE PORT OPERATIONS CONTROL CENTRE (as at 26th January 2014)

V
**EXTRACT OF ADMIRALTY NOTICES TO MARINERS
 FOR DUAL BADGED CHARTS**





These notices can also be accessed directly from UKHO Website:

www.ukho.gov.uk/ProductsandServices/MaritimeSafety/Pages/NMPublic.aspx

432* SINGAPORE – Temasek Fairway W, West Jurong Channel and Kuala Johor – Light. Works. Mooring buoys.

Light List Vol. F, 2013/14, 1684

Source: Maritime and Port Authority of Singapore

Chart 4030 Insert	[<i>previous update 4412/13</i>] WGS84 DATUM maritime limit, pecked line, joining:	(a) 1° 16′·413N., 103° 39′·611E. (shore) (b) 1° 16′·495N., 103° 39′·554E. (c) 1° 16′·578N., 103° 39′·717E. (d) 1° 16′·518N., 103° 39′·759E. (shore)
Amend	legend, Works in progress (2013), within: Range of light to, 15M	(a)-(d) above 1° 14′·377N., 103° 38′·884E.
Chart 4031 Amend	[<i>previous update 4412/13</i>] WGS84 DATUM range of light to, 15M	1° 14′·377N., 103° 38′·884E.
Chart 4033 Insert	[<i>previous update 4412/13</i>] WGS84 DATUM maritime limit, pecked line, joining:	(a) 1° 16′·413N., 103° 39′·611E. (shore) (b) 1° 16′·495N., 103° 39′·554E. (c) 1° 16′·578N., 103° 39′·717E. (d) 1° 16′·518N., 103° 39′·759E. (shore)
	legend, Works in progress (2013), within:	(a)-(d) above
Chart 4038 Amend	[<i>previous update 5009/13</i>] WGS84 DATUM range of light to, 15M	1° 14′·38N., 103° 38′·88E.
Chart 4040 Amend	[<i>previous update 5009/13</i>] WGS84 DATUM range of light to, 15M	1° 14′·38N., 103° 38′·88E.
Chart 4043 Insert	[<i>previous update New Edition 29/08/2013</i>] WGS84 DATUM  Fl.Y.6s (sync) TK-MB5	1° 22′·44N., 104° 02′·17E.
	 Fl.Y.6s (sync) TK-MB6	1° 22′·57N., 104° 02′·03E.
Chart 4044 Insert	[<i>previous update 4817/13</i>] WGS84 DATUM  Fl.Y.6s (sync) TK-MB5	1° 22′·44N., 104° 02′·17E.
	 Fl.Y.6s (sync) TK-MB6	1° 22′·57N., 104° 02′·03E.

 Updated to Admiralty Notices to Mariners Edition No. 5 of 2014 dated 30th January 2014.

MPA ENC DISTRIBUTORS

ENC DISTRIBUTOR	ADDRESS	TELEPHONE/FAX NO./EMAIL/WEBSITE
ChartWorld GmbH	Atlantic Haus, Zirkusweg 1 D-20359 Hamburg Germany	Tel. No.: +49 40 853 58 6942 Fax No.: +49 40 853 58 6949 Email: sales@chartworld.com
ChartWorld Asia Pacific Pte Ltd.	Frontech Centre 07-01, 15 Jalan Kilang Barat, Singapore 159357	Tel No.: +65 6513 3500 Website : http://www.chartworld.com http://www.ecdis-as-a-service.com
DPM (Singapore) Pte Ltd	2 Boon Leat Terrace, #05-02/03 Harbourside 2, Singapore 119844	Tel. No.: +65 6270 4060 Fax No.: +65 6276 3858 Email: sales@dpmsingapore.com.sg Website: http://www.dpmsingapore.com.sg
Maritime Information Systems (MARIS)	52, Telok Blangah Road #01-06, Telok Blangah House, Singapore 058809	Tel. No.: +65 6276 1472 Fax No.: +65 6276 1473 Email: : support@maris.sg Website: http://www.maris.no
Maritime Information Systems AS (MARIS)	Danholmen 25, 3128 Notteroy, Norway	Tel. No.: +47 33 30 42 50 Fax No.: +47 33 30 42 51 Email: : sales@maris.no Website: http://www.maris.no
Motion Smith	15 Jalan Kilang Barat #08-01/05 Frontech Centre, Singapore 159357	Tel. No.: +65 6220 5098 Fax No.: +65 6225 4902 Email: sales@motsmith.com Website: http://www.motsmith.com
Transas Marine Pacific Pte Ltd	Cyber Centre 16/18 Jalan Kilang Barat Off Jalan Bukit Merah Singapore 159358	Tel. No.: +65 6271 0200 Fax No.: +65 6271 7300 Email: navigation.asia@transas.com Website: http://www.transas.com
Japan Hydrographic Association (Electronic Charts Division)	Daiichi Sogo Bldg, 6F 1-6-6, Hanedakuko, Ota-ku Tokyo 144-0041, Japan	Tel. No.: +81 3 5708 7093 Fax No.: +81 3 5708 7094 Email: shimizu-6kj@jha.jp Website: http://www.jha.or.jp/en/jha/
Jeppesen Norway AS	P.O Box 212 , N-4371 Egersund, Norway	Tel No.: +47 51 46 4700 Fax No: +47 51 46 4701 Email: license.marine@jeppesen.com Website : http://www.jeppesen.com/marine
PRIMAR STAVANGER	Lervigsveien 36, P.O Box 60, N-4001 Stavanger, Norway	Tel. No.: +47 51 93 9500 Fax No.: +47 51 93 9501 Email: sales@ecc.no Website : http://www.primar.no
The United Kingdom Hydrographic Office	Admiralty Way, Taunton, Somerset, TA1 2DN United Kingdom	Tel. No.: +44 1823 33 7900 Fax No.: +44 1823 28 4077 Emails: ENCS.SalesReports@ukho.gov.uk Website: http://www.ukho.gov.uk

Chart Agents for the Maritime and Port Authority of Singapore
Nautical Charts and Publications

Please approach any of the appointed chart agents to purchase the Singapore Nautical Charts and Publications.

CHART AGENT	ADDRESS	TELEPHONE/FAX NO./EMAIL/WEBSITE
Cornes (Singapore) Pte Ltd	10 Anson Road #23-06/6A International Plaza Singapore 079903	Tel. No.: +65 6223 8320 Fax No.: +65 6223 8321 Email: sales9850@cspl.sg Website: http://www.cornes-charts.com
DPM (Singapore) Pte Ltd	2 Boon Leat Terrace, #05-02/03 Harbourside 2, Singapore 119844	Tel. No.: +65 6270 4060 Fax No.: +65 6276 3858 Email: sales@dpmsingapore.com.sg Website: http://www.dpmsingapore.com.sg
E.W. Liner Charts & Publications Pte Ltd	102F, Pasir Panjang Road, #08-01, Citilink Warehouse Complex, Singapore 118530	Tel. No.: +65 6323 0773 Fax No.: +65 6323 0775 Email: ewliner@singnet.com.sg Website: http://www.ewliner.com
Kelvin Hughes (Singapore) Pte Ltd	896 Dunearn Road #03-05 Sime Darby Centre Singapore 589472	Tel. No.: +65 6545 9880 Fax No.: +65 6545 8892 Email: leslie.khoo@kelvinhughes.com.sg Website: http://www.kelvinhughes.com
Motion Smith	15 Jalan Kilang Barat #08-01/05 Frontech Centre Singapore 159357	Tel. No.: +65 6220 5098 (After office hours:+65 8163 9993) Fax No.: +65 6225 4902 Email: sales@motsmith.com Website: http://www.motsmith.com

HYDROGRAPHIC NOTE - Instructions

1. Mariners are requested to notify the Chief Hydrographer, Maritime and Port Authority of Singapore, when new or suspected dangers to navigation are discovered, changes are observed in aids to navigation or where corrections to nautical publications may be necessary. Reports, which cannot be confirmed or are lacking in certain details should not be withheld.
2. Any ambiguities of time, positioning and depth should be stressed and any firm expectation of being able to check the information provided on a following voyage should be mentioned.
3. Mariners using satellite position fixing systems, eg. GPS, should provide details of equipment and datum used (where applicable). Where bearings (true or magnetic) are taken visually or by radar to fix a position, it should include more than two objects in order to provide a check on its accuracy. A position may also be defined by bearing and distance from a conspicuous object eg. beacon, lighthouse etc.
4. The note should include a tracing or a digital image of the chart used and the details should be clearly marked.
5. Echo sounders frequently register greater depths than the advertised maximum depth for the equipment, eg. a trace appearing at 50 metres may be in fact be 550 metres or even 1050 metres for equipment whose maximum depth is 500 metres. Erroneous depths caused by 2nd transmission error can usually be recognised by the following:
 - (a) the tracing being weaker than normal for the depth registered,
 - (b) the trace appearing to pass through the transmission line,
 - (c) the feathery nature of the trace.
6. Upon receipt of a hydrographic note, a Notice to Mariners may be issued. The sender's vessel or name is quoted as the source unless the same information is also received in foreign Notices to Mariners.
7. Reports of shoals, uncharted dangers and defects in aids to navigation may also be made to the appropriate Singapore Port Operations Control Centre on VHF Channels 10, 12, 14, 68 or 73.

HYDROGRAPHIC NOTE

To:

Chief Hydrographer
Maritime and Port Authority of Singapore
460 Alexandra Road PSA Building #20-00
Singapore 119963

Tel : (65) 6375 1227
Fax : (65) 6278 7646
Email : hydrographic@mpa.gov.sg

Sender's Contact Details :

Date :

Name of Vessel :

Address of Sender :

Tel : Fax :

Email :

Nature of Observation :

General Location :

Subject :

Position : Lat. Long.

Charts Used :

Date & Time of Observation :

Details :

.....

.....

Attachment :

Equipment Used :

Type of Position Fixing : GPS / DGPS Others :

Type of Echo Sounder :

Name and Signature :

Ship's/Company's Stamp :