



## SINGAPOREAN NOTICES TO MARINERS

---

SECTION	CONTENT	Page
I	Index of Charts & Publications	3
II	New Charts & Publications	11
	Notices to Mariners and Chart Corrections	15
	Temporary and Preliminary Notices	16
III	Navigational Information	17
	Amendments to Publications	18
IV	Reprint of Radio Navigational Warnings	21
V	Extract of Admiralty Notices to Mariners for Dual-Badged Charts	22

---

The monthly Notices to Mariners contain information required to keep charts and publications published by the Hydrographic Department, Maritime and Port Authority of Singapore up-to-date.

Mariners are requested to notify the Chief Hydrographer, Maritime and Port Authority of Singapore, immediately of the discovery of new or suspected dangers to navigation, observed changes to aids to navigation and ways Singaporean Charts and Publications can be improved. The Hydrographic Note on the back page should be used for this purpose.

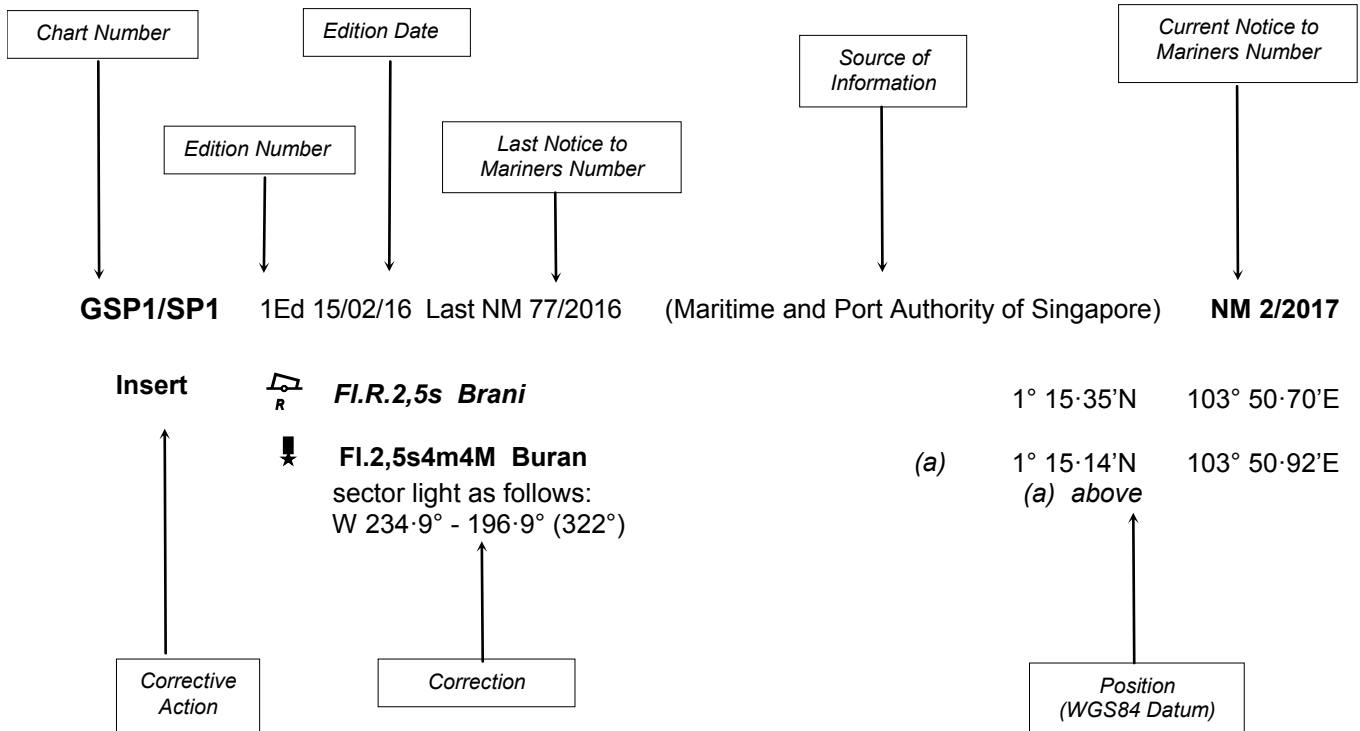
The monthly Singaporean Notices to Mariners can be accessed directly from the MPA website:

<http://www.mpa.gov.sg/web/portal/home/port-of-singapore/circulars-and-notices/singapore-notices-to-mariners-ntm>

Hydrographic Department  
Maritime and Port Authority of Singapore  
7B Keppel Road  
#20-00 Tanjong Pagar Complex  
Singapore 089055  
Tel : (65) 6325 2027  
Fax : (65) 6226 1076  
Email : [hydrographic@mpa.gov.sg](mailto:hydrographic@mpa.gov.sg)  
Website : [www.mpa.gov.sg](http://www.mpa.gov.sg)

## EXPLANATION OF FORMAT

The elements of a typical chart correction are explained below.



Notes:

- a) Notice to Mariners number followed by:  
**T** indicates a Temporary Notice (eg. **NM 3T/2017**).  
**P** indicates a Preliminary Notice (eg. **NM 4P/2017**).
- b) Bearings are true reckoned clockwise from 000° to 359°; those relating to lights are from seaward.
- c) Heights and elevations are above Mean High Water Springs.

I  
INDEX OF CHARTS AND PUBLICATIONS

INDEX OF AFFECTED CHARTS

DESCRIPTION	NOTICE NO.	PAGE NO.
Index of Singaporean Charts	-	3, 4
Index of Dual-Badged Charts	-	5 to 8
Index of Singapore Electronic Navigational Chart	-	9
Index of Malacca and Singapore Straits Electronic Navigational Chart	-	10
New Charts and Publications	-	11 to 14
Singaporean Chart GSP1/SP1	*11	15
Singaporean Chart 200	12	15
Singaporean Chart 501	13	15
Temporary and Preliminary Notices	*14P	16
Singapore Port Marine Notices/Circulars	*15	17
Amendments to Publications	*16, *17	18 to 20
Reprint of Radio Navigational Warnings	-	21
Extract of Admiralty Notices to Mariners for Dual-Badged Charts	-	22
Singapore Electronic Navigational Chart Distributors	-	23
Chart Distributors for the Maritime and Port Authority of Singaporean Charts and Publications	-	24

\*Source: Maritime and Port Authority of Singapore

I  
**INDEX OF CHARTS AND PUBLICATIONS**

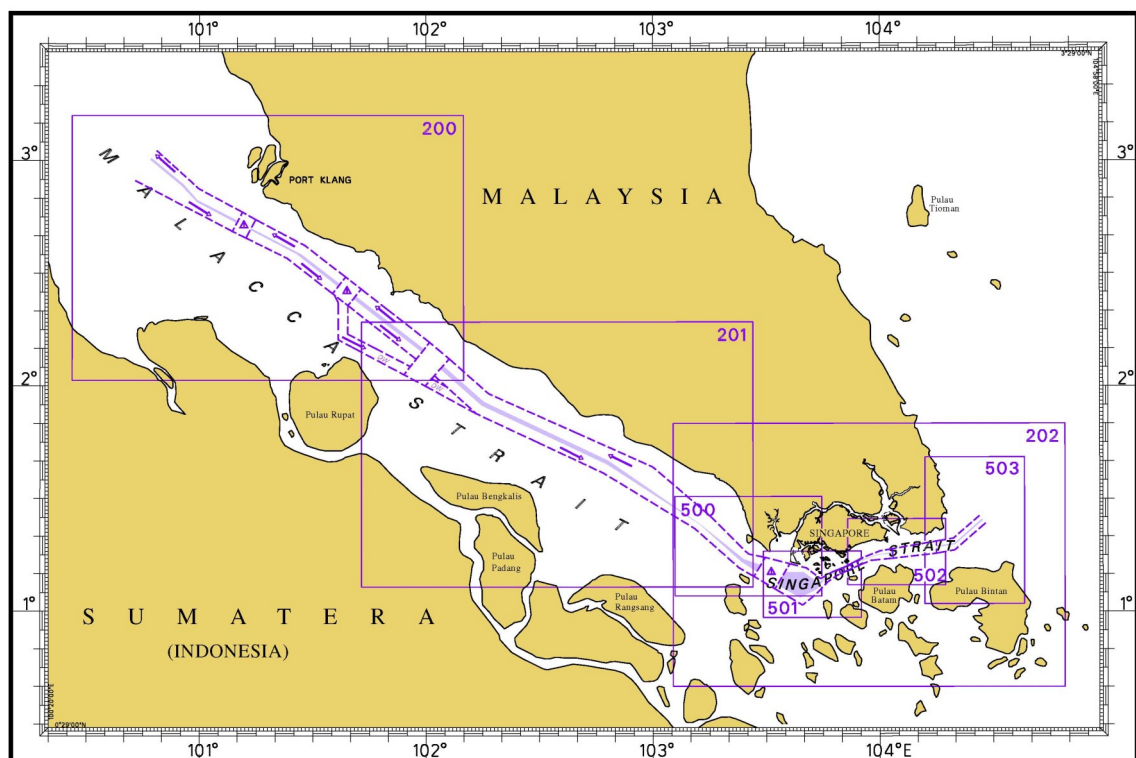
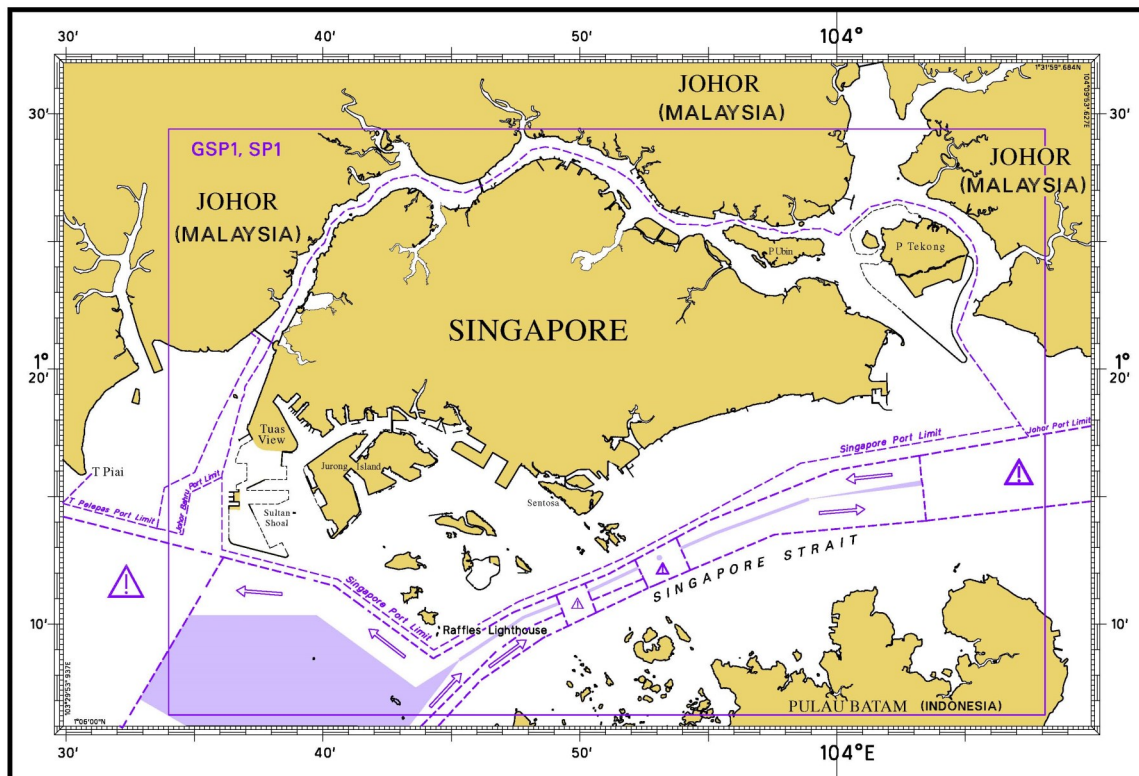
**INDEX OF NOTICES**

<b>NOTICE NO.</b>	<b>DESCRIPTION</b>	<b>PAGE NO.</b>
-	Index of Singaporean Charts	3, 4
-	Index of Dual-Badged Charts	5 to 8
-	Index of Singapore Electronic Navigational Chart	9
-	Index of Malacca and Singapore Straits Electronic Navigational Chart	10
-	New Charts and Publications	11 to 14
*11	Singaporean Chart GSP1/SP1	15
12	Singaporean Chart 200	15
13	Singaporean Chart 501	15
*14P	Temporary and Preliminary Notices	16
*15	Singaporean Port Marine Notices/Circulars	17
*16, *17	Amendment to Publications	18 to 20
-	Reprint of Radio Navigational Warnings	21
-	Extract of Admiralty Notices to Mariners for Dual-Badged Charts	22
-	Singapore Electronic Navigational Chart Distributors	23
-	Chart Distributors for the Maritime and Port Authority of Singaporean Charts and Publications	24

\*Source: Maritime and Port Authority of Singapore

# I INDEX OF CHARTS AND PUBLICATIONS

## INDEX OF SINGAPOREAN CHARTS



**Notes:**

Singaporean Charts are available through our Print-On-Demand (POD) Chart Service. Print-On-Demand (POD) Charts are the most up-to-date paper nautical charts printed for navigational use. These nautical charts are produced in accordance with the International Hydrographic Organization (IHO) chart specifications. All Singaporean Charts are continually updated to the latest Notices to Mariners before they are printed and sold to users.

## I

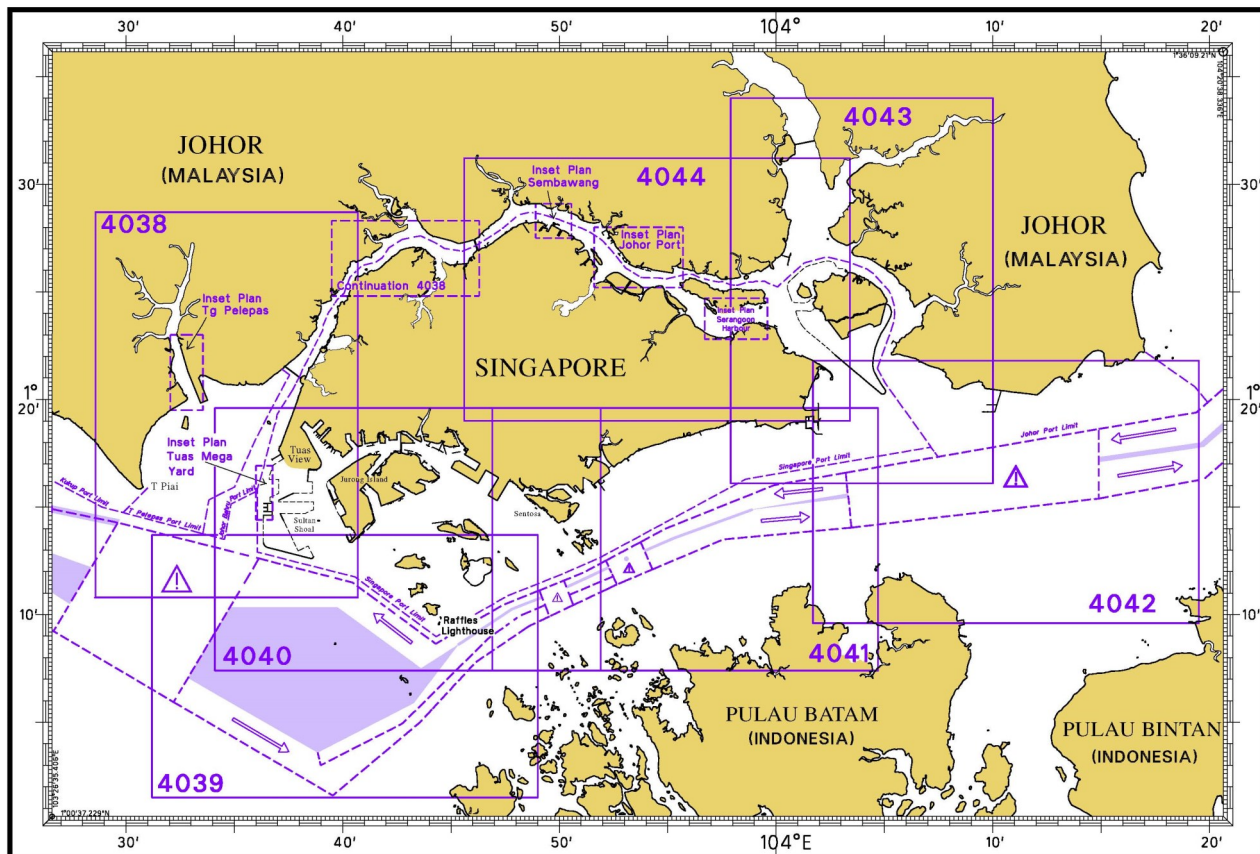
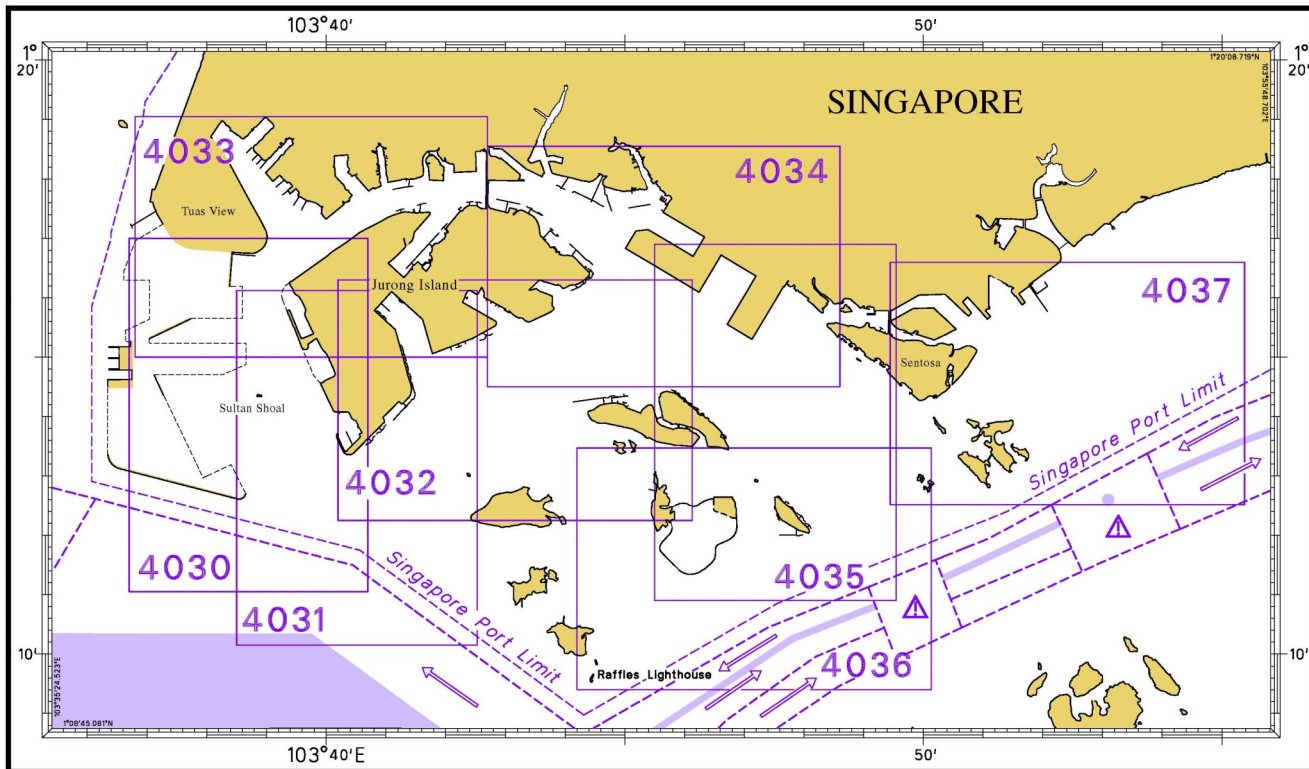
## INDEX OF CHARTS AND PUBLICATIONS

SINGAPOREAN CHARTS

Chart No.	Chart Title	Scale 1:	Date Published of Latest Edition
GSP1	Anchorage and Aids to Navigation (with Area Reference)	65 000	15/02/2016
SP1	Anchorage and Aids to Navigation	65 000	15/02/2016
200	Malacca Strait - Port Klang to Tanjung Keling	200 000	01/09/2015
201	Malacca Strait - Tanjung Keling to Western Entrance of Singapore Strait	200 000	15/08/2014
202	Singapore Strait	200 000	15/09/2016
500	Malacca and Singapore Straits - Pulau Pisang to Raffles Lighthouse	75 000	26/09/2013
501	Singapore Strait - Western Part	50 000	01/09/2015
502	Singapore Strait - Eastern Part	50 000	01/09/2015
503	South China Sea - Eastern Approaches and Entrance to Singapore Strait	75 000	15/08/2014
-	Charts for Small Craft - Singapore Port Waters and Approaches	10 000 to 200 000	January 2016
1	Symbols Abbreviations Terms and S57 Objects used on Singapore Nautical and Electronic Navigational Charts  Available for download at MPA website: <a href="http://www.mpa.gov.sg/web/portal/home/publications/chart-symbols-and-abbreviations">http://www.mpa.gov.sg/web/portal/home/publications/chart-symbols-and-abbreviations</a>	-	28/07/2011

I  
INDEX OF CHARTS AND PUBLICATIONS

DUAL-BADGED CHARTS



I  
INDEX OF CHARTS AND PUBLICATIONS

**DUAL-BADGED CHARTS**

<b>Chart No.</b>	<b>Chart Title</b>	<b>Scale 1:</b>	<b>Date Published of Latest Edition</b>
4030	Port of Singapore West Jurong Anchorages and Temasek Fairway	10 000	17/03/2016
4031	Port of Singapore Western Approaches to Jurong Island	10 000	17/03/2016
4032	Port of Singapore Sinki Fairway	10 000	04/08/2016
4033	Port of Singapore Tuas Bay, West Jurong Channel and Pesek Basin	10 000	17/03/2016
4034	Port of Singapore East Jurong Channel, Pasir Panjang Terminal and West Keppel Fairway	10 000	04/08/2016
4035	Port of Singapore Western Anchorages, Jong Fairway and Cruise Bay	10 000	28/05/2015
4036	Port of Singapore Raffles Lighthouse to The Sisters	10 000	28/05/2015
4037	Port of Singapore Keppel Harbour, Tanjong Pagar Terminal and Approaches	10 000	28/05/2015
4038	Malaysia and Singapore Johor Strait - Western Part	30 000	25/02/2016
4039	Indonesia, Singapore and Malaysia Western Approaches to Main Strait	30 000	24/04/2014
4040	Singapore, Indonesia and Malaysia Tuas View to Pulau Sakijang Bendera (St. John's Island)	30 000	27/08/2015
4041	Singapore and Indonesia Pulau Sebarok to Changi	30 000	27/08/2015

## I

**INDEX OF CHARTS AND PUBLICATIONS****DUAL-BADGED CHARTS**

<b>Chart No.</b>	<b>Chart Title</b>	<b>Scale 1:</b>	<b>Date Published of Latest Edition</b>
4042	Indonesia, Malaysia and Singapore Changi to Pulau Mungging and Tanjung Buntan to Tanjung Tondang	30 000	24/04/2014
4043	Malaysia and Singapore Kuala Johor and Sungai Johor	30 000	16/06/2016
4044	Singapore and Malaysia Johor Strait - Eastern Part	30 000	16/06/2016

**SINGAPOREAN PUBLICATIONS**

<b>Item</b>	<b>Title</b>	<b>Date Published of Latest Edition</b>
1	Singapore Tide Tables Year 2017	09/09/2016
2	Singapore Port Information 2016/2017	04/01/2016

# I INDEX OF CHARTS AND PUBLICATIONS

## DUAL-BADGED PORT APPROACH GUIDES

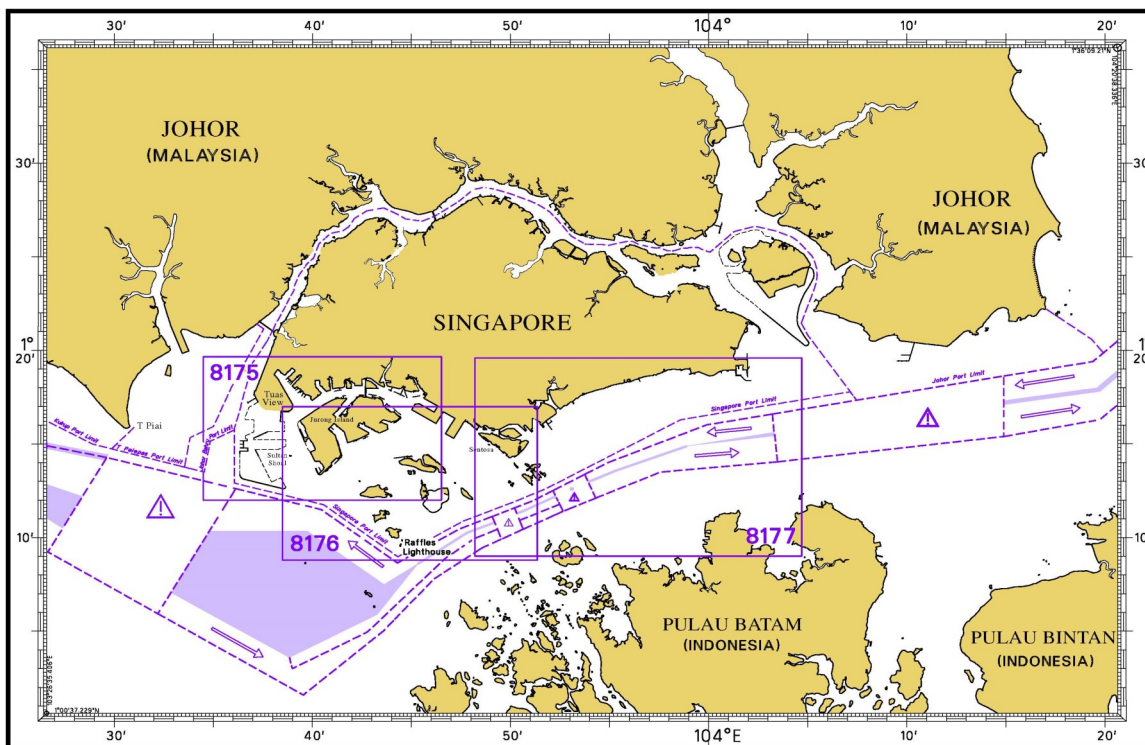
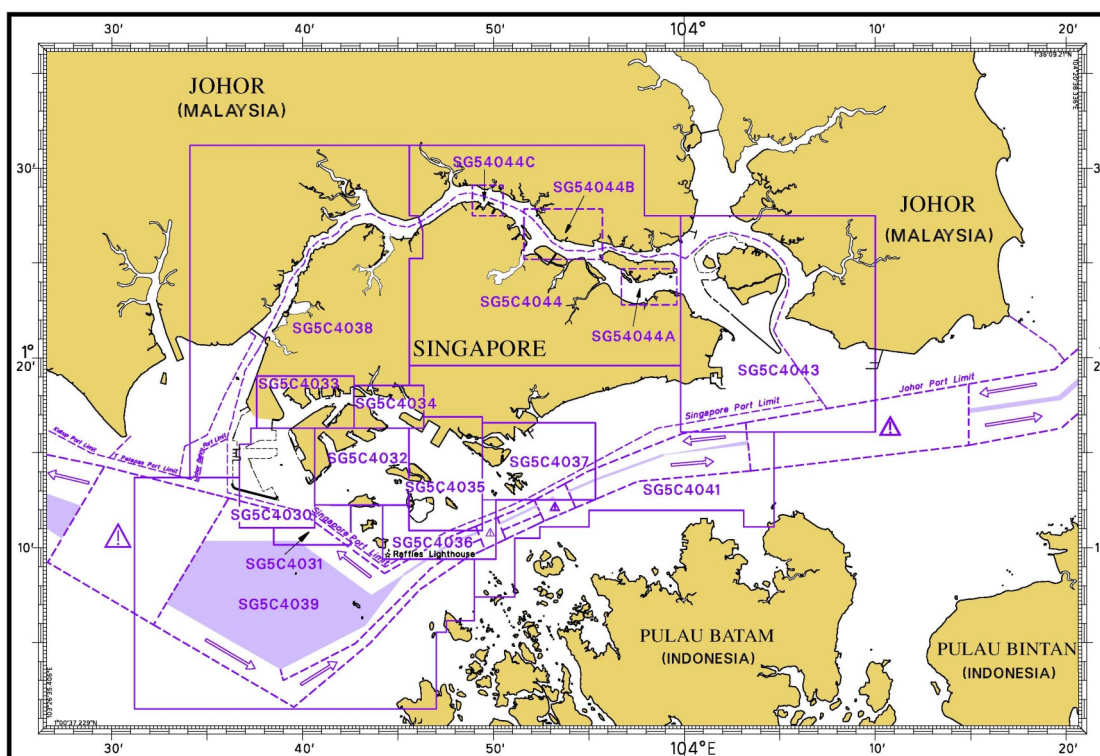


Chart No.	Chart Title	Scale 1:	Date Published of Latest Edition
8175	Port Approach Guide Singapore, Tuas View to Pasir Panjang Terminal including Jurong Channels	21 500	15/09/2016
8176	Port Approach Guide Singapore, Sinki Fairway to Southern Fairway	23 000	15/09/2016
8177	Port Approach Guide Singapore, Southern Fairway to Changi	30 000	15/09/2016

Note : The full range of Admiralty Port Approach guides is available from the Admiralty Chart Agents. To find an Admiralty Chart Agent, please visit : <http://www.admiralty.co.uk/how-to-buy>

# I

## INDEX OF CHARTS AND PUBLICATIONS



### SINGAPORE ELECTRONIC NAVIGATIONAL CHART (ENC)

ENC Name	ENC Coverage	ENC Edition
SG5C4030	West Jurong Anchorages and Temasek Fairway	9th Edition (17/03/2016)
SG5C4031	Western Approaches to Jurong Island	8th Edition (17/03/2016)
SG5C4032	Sinki Fairway	11th Edition (4/08/2016)
SG5C4033	Tuas Bay, West Jurong Channel and Pesek Basin	9th Edition (17/03/2016)
SG5C4034	East Jurong Channel, Pasir Panjang Terminal and West Keppel Fairway	14th Edition (4/08/2016)
SG5C4035	Western Anchorages, Jong Fairway and Cruise Bay	18th Edition (4/08/2016)
SG5C4036	Raffles Lighthouse to The Sisters	9th Edition (28/05/2015)
SG5C4037	Keppel Harbour, Tanjong Pagar Terminal and Approaches	9th Edition (28/05/2015)
SG5C4038	Johor Strait - Western Part	9th Edition (25/02/2016)
SG5C4039	Western Approaches to Main Strait	8th Edition (27/08/2015)
SG5C4041	Pulau Sebarok to Changi	9th Edition (27/08/2015)
SG5C4043	Kuala Johor	12th Edition (16/06/2016)
SG5C4044	Johor Strait - Eastern Part	12th Edition (16/06/2016)
SG54044A	Serangoon Harbour	3rd Edition (16/06/2016)
SG54044B	Pelabuhan Johor (Johor Port)	3rd Edition (16/06/2016)
SG54044C	Sembawang	3rd Edition (16/06/2016)

The latest edition of the Singapore ENC covering Singapore Waters and their approaches can be found in the MPA website:  
<http://www.mpa.gov.sg/web/portal/home/port-of-singapore/port-operations/charts-tidal-information-aids-to-navigation-hydrography/nautical-charts/singapore-electronic-navigational-chart-enc>



## II NEW CHARTS AND PUBLICATIONS

### NEW EDITION SINGAPOREAN CHARTS TO BE PUBLISHED ON 1<sup>ST</sup> MARCH 2017

<b>Chart Number</b>	:	*GSP1
<b>Title</b>	:	Anchorage and Aids to Navigation
<b>Coverage</b>	:	Lat 01° 06·43' N      01° 29·40' N Long 103° 34·00' E      104° 08·10' E
<b>Scale</b>	:	1 : 65 000
<b>Date Published</b>	:	1 <sup>st</sup> March 2017
<b>Size of Chart</b>	:	973.2 x 651.3 mm
<b>Description</b>	:	This new edition includes new changes to aids to navigation, working areas, submarine cables, depth contours from the latest surveys covering west of Tuas View Reclamation, West Johor Strait, Temasek Fairway, West Jurong Channel, East Jurong Channel, Pasir Panjang, West Keppel Fairway, Western Anchorages, Buran Channel, East Keppel Fairway, south of St John Island, East Johor Strait and around Pulau Tekong.
		The existing chart of the same number published on 15 <sup>th</sup> February 2016 will be superseded.

\*This chart is provided with a grid reference.

---

<b>Chart Number</b>	:	SP1
<b>Title</b>	:	Anchorage and Aids to Navigation
<b>Coverage</b>	:	Lat 01° 06·43' N      01° 29·40' N Long 103° 34·00' E      104° 08·10' E
<b>Scale</b>	:	1 : 65 000
<b>Date Published</b>	:	1 <sup>st</sup> March 2017
<b>Size of Chart</b>	:	973.2 x 651.3 mm
<b>Description</b>	:	This new edition includes new changes to aids to navigation, working areas, submarine cables, depth contours from the latest surveys covering west of Tuas View Reclamation, West Johor Strait, Temasek Fairway, West Jurong Channel, East Jurong Channel, Pasir Panjang, West Keppel Fairway, Western Anchorages, Buran Channel, East Keppel Fairway, south of St John Island, East Johor Strait and around Pulau Tekong.
		The existing chart of the same number published on 15 <sup>th</sup> February 2016 will be superseded.

---

**II**  
**NEW CHARTS AND PUBLICATIONS**

**NEW EDITION DUAL BADGED CHARTS TO BE PUBLISHED ON 2<sup>ND</sup> MARCH 2017**

<b>Chart Number</b>	:	4030
<b>Title</b>	:	Port of Singapore West Jurong Anchorages and Temasek Fairway
<b>Coverage</b>	:	Lat 01° 11·05' N      01° 17·00' N Long 103° 36·70' E      103° 40·70' E
<b>Scale</b>	:	1 : 10 000
<b>Date Published</b>	:	2 <sup>nd</sup> March 2017
<b>Size of Chart</b>	:	742.0 x 1096.5 mm
<b>Description</b>	:	This new edition includes updates covering Temasek Fairway, West Jurong Channel, Jurong Anchorages, west of Jurong Island and Sudong Anchorages.
		The existing chart of the same number published on 17 <sup>th</sup> March 2016 will be superseded.

<b>Chart Number</b>	:	4031
<b>Title</b>	:	Port of Singapore Western Approaches to Jurong Island
<b>Coverage</b>	:	Lat 01° 10·15' N      01° 16·12' N Long 103° 38·50' E      103° 42·53' E
<b>Scale</b>	:	1 : 10 000
<b>Date Published</b>	:	2 <sup>nd</sup> March 2017
<b>Size of Chart</b>	:	747.5 x 1100.2 mm
<b>Description</b>	:	This new edition includes updates covering Temasek Fairway, west of Jurong Island, Banyan Basin and Sudong Anchorages.
		The existing chart of the same number published on 17 <sup>th</sup> March 2016 will be superseded.

**II**  
**NEW CHARTS AND PUBLICATIONS**

**NEW EDITION SINGAPORE ENC TO BE RELEASED ON 2<sup>ND</sup> MARCH 2017**

**Chart Number** : SG5C4030  
**Title** : West Jurong Anchorages and Temasek Fairway  
**Coverage** : Lat 01° 11·050' N 01° 16·300' N  
 Long 103° 36·700' E 103° 40·640' E  
**Compilation Scale** : 1 : 8 000  
**Date Released** : 2<sup>nd</sup> March 2017  
**Description** : This new edition includes updates covering Temasek Fairway, West Jurong Channel, Jurong Anchorages, west of Jurong Island and Sudong Anchorages.

The existing cell of the same name released on 17<sup>th</sup> March 2016 will be superseded.

---

**Chart Number** : SG5C4032  
**Title** : Sinki Fairway  
**Coverage** : Lat 01° 12·250' N 01° 16·300' N  
 Long 103° 40·640' E 103° 45·580' E  
**Compilation Scale** : 1 : 8 000  
**Date Released** : 2<sup>nd</sup> March 2017  
**Description** : This new edition includes updates covering Sinki Fairway and Banyan Basin.

The existing cell of the same name released on 4<sup>th</sup> August 2016 will be superseded.

---

## II NEW CHARTS AND PUBLICATIONS

### **NEW EDITION CHARTS FOR SMALL CRAFT TO BE PUBLISHED IN MID-2017**




Previous editions were published at the beginning of the year. However, due to proposed developments in the Port of Singapore, the publication date for the Charts for Small Craft has been delayed to the middle of the year. Consequently, the Charts for Small Craft will be valid through 2017 and 2018.

This publication covers Singapore Waters and Approaches. It contains 12 Small Craft Charts and related nautical information bound into an atlas. Symbols for the locations of pleasure craft facilities and areas for sea sport activities such as board sailing, dinghy sailing, keelboat sailing, power-boating and water-skiing are also included.

---

## II

## NOTICES TO MARINERS AND CHART CORRECTIONS

<b>GSP1/SP1</b>	1 Ed 15/02/16 Last NM 2/2017	(Maritime and Port Authority of Singapore)	<b>NM11/2017</b>
<b>Move</b>	 <i>Fl.G.4s, Jurong Dua</i> from:		1°14·95'N 103°39·55'E
	to:		1°15·00'N 103°39·57'E
-----			
<b>200</b>	4 Ed 01/09/15 Last NM 3/2017	(Royal Malaysian Navy Notice No. 12/227/16)	<b>NM 12/2017</b>
<b>Insert</b>	 <b>Fl.5s10M</b>		2°50·35'N 101°17·05'E
<b>Delete</b>	 <i>Fl(2)5s</i>		2°50·28'N 101°16·91'E
-----			
<b>501</b>	7 Ed 01/09/15 Last NM 5/2017	(Admiralty Notice No. 1/79/17)	<b>NM 13/2017</b>
<b>Insert</b>	depth, <i>13<sub>7</sub></i>	(a)	1°09·37'N 103°49·26'E
	depth, <i>16<sub>1</sub></i> , enclosed by 20m contour	(b)	1°09·29'N 103°49·55'E
	depth, <i>17<sub>9</sub></i> , enclosed by 20m contour	(c)	1°08·92'N 103°49·35'E
<b>Delete</b>	depth, <i>16<sub>9</sub></i> , close NW of:	(a)	above
	depth, <i>20<sub>3</sub></i> , close N of:	(b)	above
	depth, <i>23<sub>9</sub></i> , close SE of:	(c)	above
-----			

## II

## TEMPORARY AND PRELIMINARY NOTICES

\*(NM 14P/2016)

**MORATELINDO CABLE SYSTEM (MIC-1) - CABLE RESTORATION OPERATIONS**

- Description** : Submarine cable restoration operations for the MIC-1 shall be executed in the Precautionary Area in the Singapore Strait off Tanjung Setapa/Pulau Bintan (STRAITREP Sector 9).
- Work Vessel** : 'MICLYN ENDURANCE'
- Call Sign** : 9WNF7
- Date of works** : With effect from 1<sup>st</sup> February 2017 until 10<sup>th</sup> February 2017, 0700H to 1900H daily.

**1. Working Area**

The co-ordinates (WGS84) of the designated working area are tabulated below:

Position	Co-ordinates (WGS84)	
	Latitude (N)	Longitude (E)
1	01°16·997'	104°07·463'
2	01°16·997'	104°08·641'
3	01°16·503'	104°08·641'
4	01°16·503'	104°07·463'

**2. Charts Affected:** Singaporean GSP1, SP1, 202, 502; Dual Badged BA4041, BA4042 and BA4043.

**3. Caution:** Mariners are advised

a) to navigate with caution.

b) to keep clear and give a wide berth when approaching the cable restoration vessel.

\*Source: Maritime and Port Authority of Singapore

---

### III NAVIGATIONAL INFORMATION

**\*(NM 15/2017) SINGAPORE PORT MARINE NOTICES/CIRCULARS**

The Port Marine Notices/Circulars shortlisted below would be of particular interest to Mariners. Details and complete list of Port Marine Notices/Circulars are available at this link:

<http://www.mpa.gov.sg/web/portal/home/port-of-singapore/circulars-and-notices>

<b>PMN No.</b>	<b>Subject</b>
142/2016	Transport of sand material to stockpile area and soil investigation works at Tuas View Extension
1/2017	Reclamation and soil investigation works off Tuas
2/2017	Soil investigation works at south of Pulau Tekukor and west of St John's Island
5/2017	Dredging works at Temasek Fairway
6/2017	Works at Tuas Terminal phase 1
7/2017	Mooring and unmooring of vessels off eastern part of Tuas View Extension
10/2017	Soil investigation works at Denman Shoal in Selat Johor
11/2017	High spot dredging works at Temasek Fairway, off west of Jurong Island

---

<b>PMC No.</b>	<b>Subject</b>
18/2016	[Reminder] Mandatory adoption of Mass Flow Metering System for Marine Fuel Oil delivery in Port of Singapore
1/2017	List of active Port Marine Circulars
2/2017	Vessels at anchor in port

---

\*Source: Maritime and Port Authority of Singapore

**III**  
**AMENDMENTS TO PUBLICATIONS**

\*(NM 16/2017) UPDATING OF PUBLICATION "SINGAPORE PORT INFORMATION 2016/2017"

**CHARACTERISTICS OF AIDS TO NAVIGATION**

1. Page 134

**TEMASEK FAIRWAY**

Amend the following:

<b>Name Of Beacon/ Buoy</b>	<b>Position Lat.N Long.E Deg Min</b>	<b>Structure, Colour &amp; Shape</b>	<b>Light Characteristic</b>	<b>Owner</b>
Jurong Dua Buoy	<b>01°15-003' 103°39-572'</b>	Green conical	Fl.G.4s	M/S Diap-Shap JV

**WHARVES AND BERTHS**

2. Page 162

**2A TUAS - SINGAPORE LUBE PARK (1°16-5'N, 103°36-6'E)**

Insert the following:

<b>Berth</b>	<b>Length of Berth Box</b>	<b>Width of Berth</b>	<b>Depth Alongside (Year Surveyed)</b>	<b>Controlling Depth in Approaches</b>
OSLP 1	220m	34m	14.9m (2015)	<b>13.5m</b>
OSLP 2	216.7m	34m	16.5m (2015)	<b>13.7m</b>
OSLP 3	78m	13m	15.9m (2015)	<b>13.4m</b>
OSLP 4	78m	13m	15.9m (2015)	<b>13.4m</b>

**DB Charts: 4038**

### III AMENDMENTS TO PUBLICATIONS

#### WHARVES AND BERTHS

3. Page 179

**45 PASIR PANJANG TERMINAL (PSA SINGAPORE TERMINALS)(1°17'2"N, 103°46'1"E)**  
Insert the following:

Berth	Length of Berth Box	Depth Alongside (Year Surveyed)	Controlling Depth in Approaches
P27	272.5m 87.5m	18.0m (2015) 15.1m (2015)	18.0m 15.2m

Amend the following:

Berth	Length of Berth Box	Depth Alongside (Year Surveyed)	Controlling Depth in Approaches
P33	360m	18.0 (2014)	18.0m
P34	312.5m	18.0 (2014)	18.0m
P35	453m	*18.0m	18.6m
P36	453m	*18.0m	18.6m

4. Page 205

#### MARITIME AND PORT AUTHORITY OF SINGAPORE NAUTICAL CHARTS AND PUBLICATIONS DISTRIBUTORS

Amend the following:

**Chart Distributor** : Cornes Singapore Pte Ltd  
**Address** : **10 Anson Road**  
**#17-04 International Plaza**  
**Singapore 079903**  
**Telephone** : (65) 6223 8320  
**Fax** : (65) 6223 8321  
**Email** : sales9850@cspl.sg  
**Internet Web Site** : <http://www.cornes-charts.com>

---

**III**  
**AMENDMENTS TO PUBLICATIONS**

**\*(NM 17/2017) UPDATING OF PUBLICATION “SINGAPORE TIDE TABLES 2017”**

1. Page 275

**DISTRIBUTORS FOR THE MARITIME AND PORT AUTHORITY OF SINGAPORE PUBLICATIONS**

**Amend the following:**

**Chart Distributor** : Cornes Singapore Pte Ltd

**Address** : **10 Anson Road**  
**#17-04 International Plaza**  
**Singapore 079903**

**Telephone** : (65) 6223 8320

**Fax** : (65) 6223 8321

**Email** : sales9850@cspl.sg

**Internet Web Site** : <http://www.cornes-charts.com>

---

## IV REPRINT OF RADIO NAVIGATIONAL WARNINGS

The following Radio Navigational Warnings have been shortlisted, as they would be of particular interest to mariners.

TT175

VESSELS IN EAST JOHOR STRAIT ARE ADVISED TO NAVIGATE WITH PARTICULAR ALERTNESS AND CAUTION WHEN NEAR PROJECT AREAS OFF PULAU TEKONG, CHANGI AND MALANG PAPAN AS SHALLOW WATER AREA EXIST. VESSELS ARE REMINDED TO PROCEED AT SAFE SPEED AND MAINTAIN A PROPER LOOKOUT, PARTICULARLY FOR TUGS AND BARGES NAVIGATING NEAR THE PROJECT AREAS AND PASSENGER FERRIES CROSSING BETWEEN CHANGI AND PULAU TEKONG AND VICINITY OF PASIR GUDANG.

TT273

ALL VESSELS ARE ADVISED TO NAVIGATE WITH CAUTION, COMPLY WITH THE INTERNATIONAL COLLISION REGULATIONS, MAINTAIN VHF RADIO WATCH AND LISTEN TO TRAFFIC INFORMATION WHEN NAVIGATING IN THE SINGAPORE STRAIT AND PORT WATERS. MARINERS ARE ALSO ADVISED TO KEEP A GOOD LOOKOUT OF FREQUENT FERRIES CROSSING THE SINGAPORE STRAIT.

TT363

MARINERS ARE REMINDED NOT TO ANCHOR IN ALL AREAS IN THE TSS OF THE STRAITS OF MALACCA AND SINGAPORE AS WELL AS BETWEEN THE LANDWARD LIMITS OF THE TSS AND APPROACHES TO THE PORTS. VESSELS ENTERING ANY PORT IN ANY LITTORAL STATES ARE TO ANCHOR IN THE ANCHORAGES DESIGNATED BY THE RESPECTIVE LITTORAL STATES ONLY.

SR387 (AMENDED B/CAST)

ATTEMPTED SEA ROBBERY IN THE EAST BOUND LANE OF THE SINGAPORE STRAIT AT POSITION LAT 01°14.83'N LONG 104°05.02'E ON 06 JAN 2017 AT 0123HRS. VESSELS ARE ADVISED TO KEEP A SHARP LOOK OUT, STEP UP ANTI-PIRACY WATCH WHEN IN THE VICINITY.

TT961

VESSELS INTENDING TO CROSS THE TRAFFIC SEPARATION SCHEME (TSS) OR PRECAUTIONARY AREAS IN THE SINGAPORE STRAIT DURING HOURS OF DARKNESS ARE RECOMMENDED TO DISPLAY THE NIGHT SIGNALS CONSISTING OF 3 ALL ROUND GREEN LIGHTS IN A VERTICAL LINE AS DETAILED IN MARITIME AND PORT AUTHORITY OF SINGAPORE'S PORT MARINE CIRCULAR, 02 OF 2011 DATED 30 MAY 2011.

SR123

SEA ROBBERIES ARE REPORTED IN THE SINGAPORE STRAIT. ALL VESSELS ARE REMINDED TO MAINTAIN A PROPER LOOK-OUT AND REPORT ANY SUSPICIOUS CRAFT TO VTIS SINGAPORE.

---

ISSUED BY SINGAPORE PORT OPERATIONS CONTROL CENTRE (as at 29<sup>th</sup> Jan 2017)

**V**  
**EXTRACT OF ADMIRALTY NOTICES TO MARINERS**  
**FOR DUAL-BADGED CHARTS**

These notices can also be accessed directly from UKHO Website:

<https://www.admiralty.co.uk/maritime-safety-information/admiralty-notices-to-mariners>

**79 SINGAPORE - Karang Banteng SE - Depths.**

Source: ENC MS4BR2JS

**Chart 4040** [previous update 6581/16] WGS84 DATUM

Insert	depth, <i>13</i> <sub>7</sub> , enclosed by 15m contour	(a)	1°09·37'N 103°49·26'E
	depth, <i>16</i> <sub>1</sub> , enclosed by 20m contour	(b)	1°09·29'N 103°49·55'E
	depth, <i>17</i> <sub>9</sub> , enclosed by 20m contour	(c)	1°08·92'N 103°49·35'E
Delete	depth, <i>16</i> <sub>9</sub> , close NW of:	(a)	above
	depth, <i>20</i> <sub>3</sub> , close N of:	(b)	above
	depth, <i>23</i> <sub>9</sub> , close SE of:	(c)	above

**Chart 4041** [previous update 5964/16] WGS84 DATUM

Insert	depth, <i>13</i> <sub>7</sub> , enclosed by 15m contour	(a)	1°09·37'N 103°49·26'E
	depth, <i>16</i> <sub>1</sub> , enclosed by 20m contour	(b)	1°09·29'N 103°49·55'E
	depth, <i>17</i> <sub>9</sub> , enclosed by 20m contour	(c)	1°08·92'N 103°49·35'E
Delete	depth, <i>16</i> <sub>9</sub> , close NW of:	(a)	above
	depth, <i>20</i> <sub>3</sub> , close N of:	(b)	above
	depth, <i>23</i> <sub>9</sub> , close SE of:	(c)	above

---

Updated to Admiralty Notices to Mariners No. 4 of 2017 dated 26<sup>th</sup> Jan 2017

## SINGAPORE ENC DISTRIBUTORS

ENC DISTRBUTOR	ADDRESS	TEL/FAX/EMAIL/WEBSITE
C-MAP Norway AS	Hovlandsveien 52, 4374, Egersund Norway	Tel: +47 51 46 4700 Fax: +47 51 46 4701 Email: enc@c-map.com Website: http://www.c-map.com
Chartworld GmbH	Atlantic Haus, Zirkusweg 1 D-20359 Hamburg, Germany	Tel: +49 40 853 58 6942 Fax: +49 40 853 58 6949 Email: sales@chartworld.com
Chartworld Asia Pacific Pte Ltd	Frontech Centre #07-01 15 Jalan Kilang Barat Singapore 159357	Tel: +65 6513 3500 Website: http://www.chartworld.com http://www.ecdis-as-a-service.com
Global Navigation Solutions Ltd	2 Boon Leat Terrace #05-02/03/04, Harbourside Building 2 Singapore 119844	Tel: +65 62704060 Fax: +65 62763858 Email: sg.info@gnsworldwide.com Website: www.gnsworldwide.com
Japan Hydrographic Association (Electronic Charts Division)	Daiichi Sogo Bldg, 6F 1-6-6, Hanedakuko, Ota-ku Tokyo 144-0041 Japan	Tel: +81 3 5708 7093 Fax: +81 3 5708 7094 Email: shimizu-6kj@jha.jp Website: http://www.jha.or.jp/en/jha/
Maritime Information Systems (MARIS)	52, Telok Blangah Road #01-06 Telok Blangah House Singapore 058809	Tel: +65 6276 1472 Fax: +65 6276 1473 Email: support@maris.sg Website: http://www.maris.no
Maritime Information System AS (MARIS)	Danholmen 25, 3128 Notteroy Norway	Tel: +47 33 30 42 50 Fax: +47 33 30 42 51 Email: sales@maris.no Website: http://www.maris.no
Motion Smith	15 Jalan Kilang Barat #08-01/05 Frontech Centre Singapore 159357	Tel: +65 6220 5098 Fax: +65 6225 4902 Email: sales@motsmith.com Website: http://www.motsmith.com
PRIMAR STAVANGER	Lervigsveien 36, P.O Box 60 N-4001 Stavanger, Norway	Tel: +47 51 93 9500 Fax: +47 51 93 9501 Email: sales@ecc.no Website: http://www.primar.no
Transas Marine Pacific Pte Ltd	Cyber Centre 16/18 Jalan Kilang Barat Off Jalan Bukit Merah Singapore 159358	Tel: +65 6271 0200 Fax: +65 62717300 Email: navigation.asia@transas.com Website: http://www.transas.com
The United Kingdom Hydrographic Office	Admiralty Way, Taunton Somerset, TA1 2DN United Kingdom	Tel: +44 1823 33 7900 Fax: +44 1823 28 4077 Email: ENCS.SalesReports@ukho.gov.uk Website: http://www.ukho.gov.uk

**Chart Distributors for the Maritime and Port Authority of Singaporean  
Charts and Publications**

Please approach any of the Chart Distributors to purchase the Singaporean Charts and Publications

<b>CHART DISTRIBUTORS</b>	<b>ADDRESS</b>	<b>TEL/FAX/EMAIL/WEBSITE</b>
Chartco (Singapore) Pte Ltd	896 Dunearn Road #03-05 Sime Darby Centre Singapore 589472	Tel: +65 6545 9880 Ext 65285 Fax: +65 6545 8892 Email: leslie.khoo@chartco.com Website: <a href="http://www.chartco.com">http://www.chartco.com</a>
Cornes (Singapore) Pte Ltd	10 Anson Road #17-04 International Plaza Singapore 079903	Tel: +65 6223 8320 Fax: +65 6223 8321 Email: sales9850@cspl.sg Website: <a href="http://www.cornes-charts.com">http://www.cornes-charts.com</a>
E.W. Liner Charts & Publications Pte Ltd	100, Pasir Panjang Road #05-10 Singapore 118518	Tel: +65 6323 0773 Fax: +65 6323 0775 Email: sales@ewliner.com Website: <a href="http://www.ewliner.com">http://www.ewliner.com</a>
Global Navigation Solutions Ltd	2 Boon Leat Terrace #05-02/03/04, Harbourside Building 2 Singapore 119844	Tel: +65 6270 4060 (After office hours: +65 9632 5268) Fax: +65 6276 3858 Email: sg.info@gnsworldwide.com Website: <a href="http://www.gnsworldwide.com">http://www.gnsworldwide.com</a>
Motion Smith	15 Jalan Kilang Barat #08-01/05 Frontech Centre Singapore 159357	Tel: +65 6220 5098 (After office hours: +65 8163 9993) Fax: +65 225 4902 Email: sales@motsmith.com Website: <a href="http://www.motsmith.com">http://www.motsmith.com</a>

## HYDROGRAPHIC NOTE - Instructions

1. Mariners are requested to notify the Chief Hydrographer, Maritime and Port Authority of Singapore, when new or suspected dangers to navigation are discovered, changes are observed in aids to navigation or where corrections to nautical publications may be necessary. Reports, which cannot be confirmed or are lacking in certain details should not be withheld.
2. Any ambiguities of time, positioning and depth should be stressed and any firm expectation of being able to check the information provided on a following voyage should be mentioned.
3. Mariners using satellite position fixing systems, eg. GPS, should provide details of equipment and datum used (where applicable). Where bearings (true or magnetic) are taken visually or by radar to fix a position, it should include more than two objects in order to provide a check on its accuracy. A position may also be defined by bearing and distance from a conspicuous object eg. beacon, lighthouse etc.
4. The note should include a tracing or a digital image of the chart used and the details should be clearly marked.
5. Echo sounders frequently register greater depths than the advertised maximum depth for the equipment, eg. a trace appearing at 50 metres may be in fact be 550 metres or even 1050 metres for equipment whose maximum depth is 500 metres. Erroneous depths caused by 2nd transmission error can usually be recognised by the following:
  - (a) the tracing being weaker than normal for the depth registered,
  - (b) the trace appearing to pass through the transmission line,
  - (c) the feathery nature of the trace.
6. Upon receipt of a hydrographic note, a Notice to Mariners may be issued. The sender's vessel or name is quoted as the source unless the same information is also received in foreign Notices to Mariners.
7. Reports of shoals, uncharted dangers and defects in aids to navigation may also be made to the appropriate Singapore Port Operations Control Centre on VHF Channels 10, 12, 14, 68 or 73.

**HYDROGRAPHIC NOTE**

To:

Chief Hydrographer  
Maritime and Port Authority of Singapore  
7B Keppel Road #20-00 Tanjong Pagar Complex  
Singapore 089055

Tel : (65) 6325 2027  
Fax : (65) 6226 1076  
Email : [hydrographic@mpa.gov.sg](mailto:hydrographic@mpa.gov.sg)

**Sender's Contact Details** :

Date : .....  
Name of Vessel : .....  
Address of Sender : .....  
Tel : ..... Fax : .....  
Email : .....

**Nature of Observation** :

General Location : .....  
Subject : .....  
Position : Lat. .... Long. ....  
Charts Used : .....  
Date & Time of Observation : .....  
Details : .....  
Attachment : .....

**Equipment Used** :

Type of Position Fixing : ..... GPS / DGPS ..... Others : .....  
Type of Echo Sounder : .....

Name and Signature : .....

Ship's/Company's Stamp : .....