



SINGAPOREAN NOTICES TO MARINERS

SECTION	CONTENT	Page
I	Affected Charts & Publications	1
II	Notices to Mariners and Chart Corrections	3
	Temporary and Preliminary Notices	4
III	Navigational Information	6
	Amendments to Publications	7
IV	Reprint of Maritime Safety Information	8
V	Extract of Admiralty Notices to Mariners for Dual-Badged Charts	10

The monthly Notices to Mariners contain information required to keep charts and publications published by the Hydrographic Department, Maritime and Port Authority of Singapore up-to-date.

Mariners are requested to notify the Chief Hydrographer, Maritime and Port Authority of Singapore, immediately of the discovery of new or suspected dangers to navigation, observed changes to aids to navigation and ways Singaporean Charts and Publications can be improved. The Hydrographic Note on the back page should be used for this purpose.

Detailed information of charts and publications (coverage of charts, latest editions and distributors) are available on the Maritime and Port Authority Website: www.mpa.gov.sg

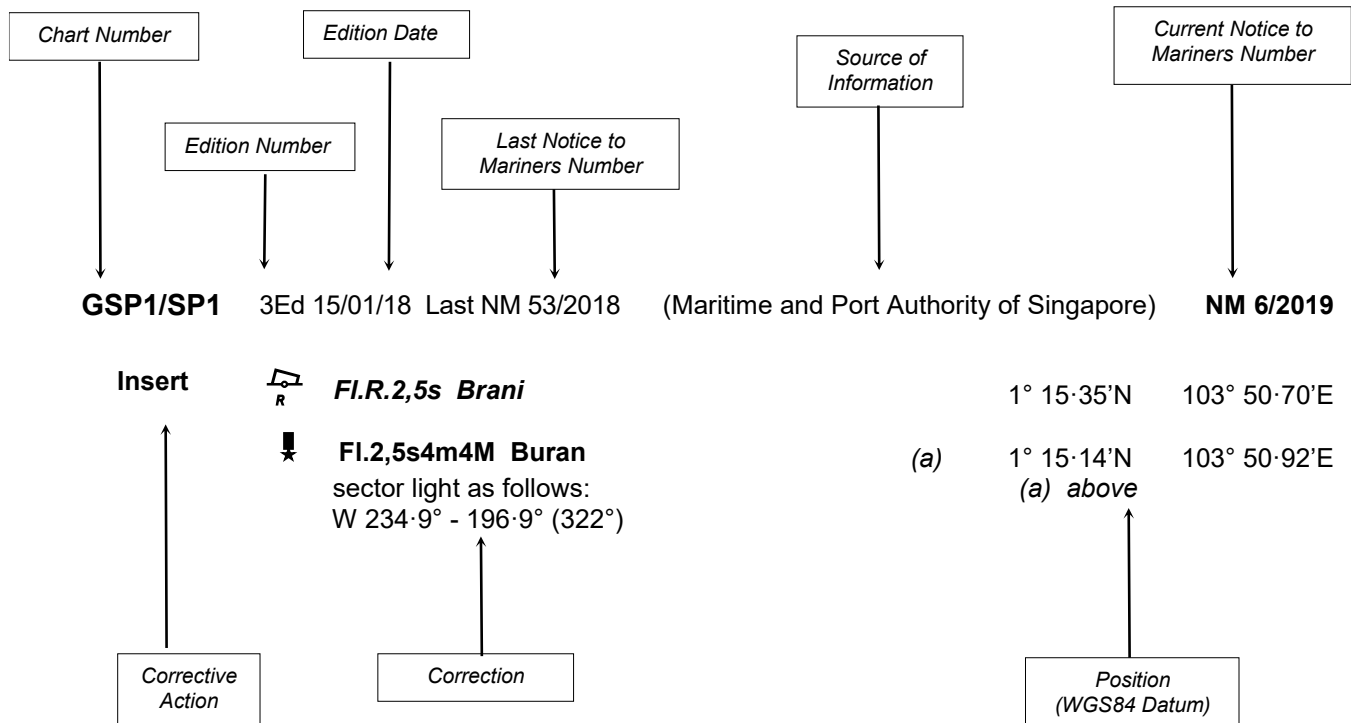
- [Singaporean Notice to Mariners](#)
- [Singaporean Charts](#)
- [Dual-Badged Charts](#)
- [Singapore ENC](#)
- [Malacca and Singapore Straits ENC](#)
- [Singapore Port Information](#)
- [Singapore Tide Tables](#)

Contact information:

Hydrographic Department
Maritime and Port Authority of Singapore
7B Keppel Road
#20-00 Tanjong Pagar Complex
Singapore 089055
Tel : (65) 6325 2027
Fax : (65) 6226 1076
Email : hydrographic@mpa.gov.sg

EXPLANATION OF FORMAT

The elements of a typical chart correction are explained below.



Notes:

a) Notice to Mariners number followed by:

T indicates a Temporary Notice (eg. **NM 9T/2019**).

P indicates a Preliminary Notice (eg. **NM 10P/2019**).

b) Bearings are true reckoned clockwise from 000° to 359°; those relating to lights are from seaward.

c) Heights and elevations are above Mean High Water Springs.

I
AFFECTED CHARTS AND PUBLICATIONS

INDEX OF AFFECTED CHARTS

DESCRIPTION	NOTICE NO.	PAGE NO.
Singaporean Chart GSP1/SP1	*14	3
Singaporean Chart 200	15	3
Singaporean Chart 201	16	3
Singaporean Chart 500	*17	3
Temporary and Preliminary Notices	18T, *19T	4,5
Singapore Port Marine Notices/Circulars	*20	6
Amendments to Publications	*21	7
Reprint of Maritime Safety Information	-	8, 9
Extract of Admiralty Notices to Mariners for Dual-Badged Charts	-	10, 11

*Source: Maritime and Port Authority of Singapore

I
AFFECTED CHARTS AND PUBLICATIONS

INDEX OF NOTICES

NOTICE NO.	DESCRIPTION	PAGE NO.
*14	Singaporean Chart GSP1/SP1	3
15	Singaporean Chart 200	3
16	Singaporean Chart 201	3
*17	Singaporean Chart 500	3
18T, *19T	Temporary and Preliminary Notices	4,5
*20	Singapore Port Marine Notices/Circulars	6
*21	Amendments to Publications	7
-	Reprint of Maritime Safety Information	8, 9
-	Extract of Admiralty Notices to Mariners for Dual-Badged Charts	10, 11

*Source: Maritime and Port Authority of Singapore

II

NOTICES TO MARINERS AND CHART CORRECTIONS

GSP1/SP1 3 Ed 15/1/18 Last NM 3/2019 (Maritime and Port Authority of Singapore) **NM 14/2019**

Insert the accompanying block, centred on: 1°17·57'N 103°41·77'E

200 4 Ed 1/9/15 Last NM 4/2019 (Malaysia Marine Department Notice No. 181/2018) **NM 15/2019**

Delete  *Fl. Y. 4s* 2°53·69'N 100°59·70'E

201 6 Ed 15/9/17 Last NM 5/2019 (Malaysia Marine Department Notice No. 182/2018) **NM 16/2019**

Delete  *Fl. Y. 4s* 2°03·03'N 102°17·77'E

500 8 Ed 15/9/17 Last NM 6/2019 (Maritime and Port Authority of Singapore) **NM 17/2019**

Insert the accompanying block, centred on: 1°17·96'N 103°42·95'E

II

TEMPORARY AND PRELIMINARY NOTICES

(NM 18T/2019)

TELUK RAMUNIA - SUNKEN VESSEL 'MV AMANDA'

Description	:	A vessel 'MV Amanda' has sunk off Teluk Ramunia. An isolated danger buoy with light characteristic Fl(2)10s has been established to mark the sunken vessel 'MV Amanda'	
Position of buoy	:	Latitude	1°30·21'N
		Longitude	104°20·96'E
Position of wreck	:	Latitude	1°30·22'N
		Longitude	104°21·04'E
Remark	:	Mariners are advised to navigate with caution.	
Charts affected	:	Singaporean 202 and 503	
Source	:	Marine Department Malaysia Notice No. 185(T) and 187(T) of 2018	

II

TEMPORARY AND PRELIMINARY NOTICES

*(NM 19T/2019)

CABLE LAYING WORKS IN THE EAST JOHOR STRAIT

Description : Cable laying works will be conducted in the East Johor Strait
(refer to Maritime and Port Authority of Singapore, Port Marine Notice 9/2019)

Working Period : From 24th January 2019 until further notice.

1. The working area is bounded by the following coordinates:

No.	Co-ordinates (WGS84)	
	Latitude (N)	Longitude (E)
1	1°28·585'	103°48·148'
2	1°28·696'	103°48·662'
3	1°28·208'	103°48·573'
4	1°28·141'	103°48·182'

2. Denman Shoal buoy and Senoko "A" buoy will be temporarily removed during the working period
3. Mariners are advised to refer to the latest Port Marine Notices available at the MPA website for the latest information and navigate with caution.

Charts Affected: Singaporean GSP1/SP1, 202, and Dual Badged BA4044

Source: Maritime and Port Authority of Singapore

III NAVIGATIONAL INFORMATION

*(NM 20/2019)

SINGAPORE PORT MARINE NOTICES/CIRCULARS

The Port Marine Notices/Circulars shortlisted below would be of particular interest to Mariners. Details and complete list of Port Marine Notices/Circulars are available at this link:

<http://www.mpa.gov.sg/web/portal/home/port-of-singapore/circulars-and-notices>

PMN No.	Subject
131/2018	Transport of sand material to stockpile area at Tuas View Extension
134/2018	New Edition Singapore ENC to be released on 27 December 2018
2/2019	Dredging works in Temasek Fairway
3/2019	Installation of floating sea barrier off Tanjong Punggol and Coney Island
4/2019	Demolition and removal of existing floating panels and concrete walkway on St John's Island
5/2019	Dredging works off West Jurong Channel and Pesek Basin
8/2019	Reclamation works off Changi East
9/2019	Cable laying works in the East Johor Strait
10/2019	Works off Small Craft A (ASCA) Anchorage
11/2019	Works off West of Jurong Island
12/2019	Replacement of fenders at Punggol Jetty

PMC No.	Subject
01/2019	List of active Port Marine Circulars
02/2019	Maritime and Port Authority of Singapore(dangerous goods, petroleum and explosives) Regulations 2005 - weight limitation of dangerous goods

*Source: Maritime and Port Authority of Singapore

III AMENDMENTS TO PUBLICATIONS

*(NM 21/2019) UPDATING OF PUBLICATION “SINGAPORE PORT INFORMATION 2018/2019”

WHARVES AND BERTHS

1. Page 167

28 JURONG TERMINAL (PULAU DAMAR LAUT)(JURONG PORT PTE LTD)(1°18·1'N, 103°42·9'E)

Delete the following:

Berth	Length of Berth Box	Max LOA	Depth Alongside (Year Surveyed)	Controlling Depth In Approaches
J18	192m	-	16·7m (2002)	16·0m
J19	140m	-	16·5m (2002)	16·0m

Insert the following:

28.1 JURONG PORT TANK TERMINALS - PULAU DAMAR LAUT (JURONG PORT TANK TERMINALS PTE LTD)(1°18·3'N, 103°43·1'E)

Berth	Length of Berth Box	Max LOA	Depth Alongside (Year Surveyed)	Controlling Depth In Approaches
JPT1	274m	-	16·6m (2018)	-
JPT2	153m	-	18·9m (2018)	-
JPT3	302m	-	17·8m (2018)	-
JPT4	183m	-	19·2m (2018)	-

*Source: Maritime and Port Authority of Singapore

IV

REPRINT OF MARITIME SAFETY INFORMATION

The following Maritime Safety Information have been shortlisted, as they would be of particular interest to mariners.

TT175

VESSELS IN EAST JOHOR STRAIT ARE ADVISED TO NAVIGATE WITH PARTICULAR ALERTNESS AND CAUTION WHEN NEAR THE PROJECT AREAS OFF PULAU TEKONG, CHANGI AND MALANG PAPAN AS SHALLOW WATER AREAS EXIST. VESSELS ARE REMINDED TO PROCEED AT A SAFE SPEED AND MAINTAIN A PROPER LOOK-OUT, PARTICULARLY FOR TUGS AND BARGES NAVIGATING NEAR THE PROJECT AREAS AND PASSENGER FERRIES CROSSING BETWEEN CHANGI AND PULAU TEKONG AND VICINITY OF PASIR GUDANG.

TT273

ALL VESSELS ARE ADVISED TO NAVIGATE WITH CAUTION, COMPLY WITH THE COLLISION REGULATIONS AND MAINTAIN VHF RADIO WATCH AND LISTEN TO TRAFFIC INFORMATION WHEN NAVIGATING IN THE SINGAPORE STRAIT AND PORT WATERS. MARINERS ARE ALSO ADVISED TO KEEP A GOOD LOOKOUT OF FREQUENT FERRIES CROSSING THE SINGAPORE STRAIT.

TT363

MARINERS ARE REMINDED NOT TO ANCHOR IN ALL AREAS IN THE TSS OF THE STRAITS OF MALACCA AND SINGAPOREAS WELL AS BETWEEN THE LANDWARD LIMITS OF THE TSS AND APPROACHES TO THE PORTS. VESSELS ENTERING ANY PORT IN ANY LITTORAL STATES ARE TO ANCHOR IN THE ANCHORAGES DESIGNATED BY THE RESPECTIVE LITTORAL STATES ONLY.

TT399

VESSELS ARRIVING TO SINGAPORE OR TRANSITING THROUGH THE STRAIT ARE RECOMMENDED TO UPDATE THEIR DESTINATION ACCURATELY IN THE AIS TO ENHANCE SITUATION AWARENESS FOR OTHER TRAFFIC IN THE VICINITY. EXAMPLE TO INDICATE SG-PEBGB.

TT418

WEST BOUND DEEP DRAFT VESSELS AND VLCCS ARE REMINDED TO COMPLY WITH THE RULES OF VESSELS NAVIGATING THROUGH THE STRAITS OF MALACCA AND SINGAPORE (SOMS). THEY SHALL ALLOW FOR AN UKC OF AT LEAST 3.5 METRES AT ALL TIMES DURING THE ENTIRE PASSAGE THROUGH THE SOMS AND AS FAR AS IT IS SAFE & PRACTICABLE, PROCEED AT A SPEED OF NOT MORE THAN 12 KTS OVER THE GROUND IN THE WESTBOUND LANE OF THE SINGAPORE STRAIT (BETWEEN SOUTH OF ST JOHN'S ISLAND & RAFFLES LIGHTHOUSE).

THEY ARE ADVISED TO BROADCAST, 8 HOURS BEFORE ENTERING THE TSS, NAVIGATIONAL INFORMATION GIVING NAME, DEADWEIGHT, DRAUGHT, SPEED AND TIMES OF PASSING HORSBURGH LIGHTHOUSE AND RAFFLES LIGHTHOUSE.

TT426

ALL MARINERS ARE REMINDED TO NAVIGATE WITH CAUTION IN THE PRECAUTIONARY AREAS OF THE SINGAPORE STRAIT TSS AND TO MAINTAIN A GOOD LOOKOUT FOR CROSSING TRAFFIC. VESSELS INTENDING TO CROSS THE TSS SHALL DO SO ONLY WHEN IT IS SAFE AND SHALL AT ALL TIMES COMPLY WITH THE COLLISION REGULATIONS.

TT430 (AMENDED ON 12 DEC 18 0853Z)

THE FOLLOWING ATONS AIS ARE TEMPORARILY REMOVED FOR UPGRADING.

ATONS WITH AIS TEMPORARILY REMOVED FOR UPGRADING:

1. ANGLER BUOY
2. RASU BUOY
3. RAFFLES LIGHTHOUSE
4. SELEGI BEACON

MARINERS ARE ADVISED TO NAVIGATE WITH CAUTION

TT440

A NUMBER OF UNKNOWN VESSELS ARE OBSERVED ANCHORED IN THE TSS/PRECAUTIONARY AREA SOUTH OF TG. RAMUNIA AT APPROXIMATE POSITION 01°17.91'N, 104°14.92'E. ALL VESSELS ARE ADVISED TO KEEP A GOOD LOOK OUT AND PROCEED WITH CAUTION WHEN PASSING THIS AREA IN THE SINGAPORE STRAIT.

TT506

THE MARITIME AND PORT AUTHORITY OF SINGAPORE HAS REVISED ITS PORT LIMITS WITH EFFECT FROM 6 DEC 2018. MARINERS ARE ADVISED TO REFER PORT MARINE CIRCULAR NO 9 OF 2018 ON MPA'S WEBSITE FOR DETAILS.

TT 514

DAMAGED VESSEL 'STAR CENTURION' IS SINKING AT APPROXIMATE POSITION LAT 01°24'N, 104°35'E. ALL PASSING VESSELS ARE ADVISED TO KEEP WELL CLEAR AND NAVIGATE WITH CAUTION.

IV
REPRINT OF MARITIME SAFETY INFORMATION

TT961

VESSELS INTENDING TO CROSS THE TRAFFIC SEPARATION SCHEME (TSS) OR PRECAUTIONARY AREAS IN THE SINGAPORE STRAIT DURING THE HOURS OF DARKNESS ARE RECOMMENDED TO DISPLAY THE NIGHT SIGNALS CONSISTING OF 3 ALL ROUND GREEN LIGHTS IN A VERTICAL LINE AS DETAILED IN THE MARITIME AND PORT AUTHORITY OF SINGAPORE'S PORT MARINE CIRCULAR, 04 OF 2013 DATED 7 MAY 2013.

SR123

SEA ROBBERIES ARE REPORTED IN THE SINGAPORE STRAIT, ALL VESSELS ARE REMINDED TO MAINTAIN A PROPER LOOKOUT AND REPORT ANY SUSPICIOUS CRAFT TO VTIS SINGAPORE.

ISSUED BY SINGAPORE PORT OPERATIONS CONTROL CENTRE (as at 27th Jan 2019)

V

EXTRACT OF ADMIRALTY NOTICES TO MARINERS FOR DUAL-BADGED CHARTS

These notices can also be accessed directly from UKHO Website:

<http://www.admiralty.co.uk/maritime-safety-information/admiralty-notices-to-mariners>

645(T)/19 SINGAPORE - Fairway. Works. Buoyage.

Source: Maritime and Port Authority of Singapore

- Due to drilling and blasting works within the Temasek Fairway until June 2019, the limits of the fairway have been temporarily re-aligned to join the following positions:

1° 16'·121N., 103° 39'·216E.

1° 15'·955N., 103° 39'·216E.

1° 14'·310N., 103° 39'·938E.

1° 13'·702N., 103° 40'·138E.

and

1° 15'·440N., 103° 38'·709E.

1° 15'·038N., 103° 38'·830E.

1° 14'·179N., 103° 39'·176E.

1° 13'·707N., 103° 39'·366E.

1° 12'·967N., 103° 39'·478E.

- The working area will be marked by the following buoyage:

<i>Characteristic</i>	<i>Designation</i>	<i>Buoy Type</i>	<i>Position</i>
<i>VQ(9)10s</i>	<i>F2-DDJV-W2</i>	<i>West Cardinal</i>	1° 15'·140N., 103° 39'·079E.
<i>Q(3)15s</i>	<i>F2-DDJV-E2</i>	<i>East Cardinal</i>	1° 15'·223N., 103° 39'·279E.
<i>Q(3)15s</i>	<i>F2-DDJV-E1</i>	<i>East Cardinal</i>	1° 14'·208N., 103° 39'·688E.
<i>VQ(9)10s</i>	<i>F2-DDJV-W1</i>	<i>West Cardinal</i>	1° 14'·317N., 103° 39'·411E.

- *The lateral light-buoy, *Fl(2)R.7s, F2-DDJV-3B*, in position 1° 14'·633N., 103° 39'·342E. has been removed.
- Mariners are advised to contact the local port authority for the latest information.
- Former Notice 152(T)/19 is cancelled.

*Indicates new or revised entry.
(WGS84 DATUM)

Charts affected - 4030 - 4031 - 4033 - 4038 - 4040 - 8175

234 MALAYSIA - Peninsular Malaysia, East Coast - NM Block. Jetty. Legends.

Source: New Edition of GB 4043 published 27 December 2018

Chart 4042 [*previous update 5118/18*] WGS84 DATUM

Insert the accompanying block, centred on: 1° 20'·1N., 104° 08'·1E.

The chart displays a coastal region with several key features and navigational data:

- Geographical Features:**
 - Tanjung Setapa:** A prominent landmass in the center, marked with a star and the coordinates $\star F(3)20s42m18M$. It is circled in orange.
 - Teluk Ampang:** A body of water to the east of Tanjung Setapa.
 - Johor Port:** Located at the bottom left of the chart.
 - Fishing Stakes (ruins):** Indicated by a dashed line and anchor symbols in the lower left.
 - Works in progress (2018):** A dashed line and anchor symbol in the center, labeled "Works in progress (2018)".
 - General Purposes:** A dashed line and anchor symbol in the lower left, labeled "General Purposes".
- Navigational Aids and Symbols:**
 - Depth Soundings:** Numerous numerical values (e.g., 0.6, 0.2, 1.6, 4.6, 12, 16.6, 23, 25, 27.5, 29, 30, 31, 32, 34, 36, 37, 40, 42, 44, 46, 48, 50, 52, 54, 56, 58, 60, 62, 64, 66, 68, 70, 72, 74, 76, 78, 80, 82, 84, 86, 88, 90, 92, 94, 96, 98, 100, 102, 104, 106, 108, 110, 112, 114, 116, 118, 120, 122, 124, 126, 128, 130, 132, 134, 136, 138, 140, 142, 144, 146, 148, 150, 152, 154, 156, 158, 160, 162, 164, 166, 168, 170, 172, 174, 176, 178, 180, 182, 184, 186, 188, 190, 192, 194, 196, 198, 200, 202, 204, 206, 208, 210, 212, 214, 216, 218, 220, 222, 224, 226, 228, 230, 232, 234, 236, 238, 240, 242, 244, 246, 248, 250, 252, 254, 256, 258, 260, 262, 264, 266, 268, 270, 272, 274, 276, 278, 280, 282, 284, 286, 288, 290, 292, 294, 296, 298, 300, 302, 304, 306, 308, 310, 312, 314, 316, 318, 320, 322, 324, 326, 328, 330, 332, 334, 336, 338, 340, 342, 344, 346, 348, 350, 352, 354, 356, 358, 360, 362, 364, 366, 368, 370, 372, 374, 376, 378, 380, 382, 384, 386, 388, 390, 392, 394, 396, 398, 400, 402, 404, 406, 408, 410, 412, 414, 416, 418, 420, 422, 424, 426, 428, 430, 432, 434, 436, 438, 440, 442, 444, 446, 448, 450, 452, 454, 456, 458, 460, 462, 464, 466, 468, 470, 472, 474, 476, 478, 480, 482, 484, 486, 488, 490, 492, 494, 496, 498, 500, 502, 504, 506, 508, 510, 512, 514, 516, 518, 520, 522, 524, 526, 528, 530, 532, 534, 536, 538, 540, 542, 544, 546, 548, 550, 552, 554, 556, 558, 560, 562, 564, 566, 568, 570, 572, 574, 576, 578, 580, 582, 584, 586, 588, 590, 592, 594, 596, 598, 600, 602, 604, 606, 608, 610, 612, 614, 616, 618, 620, 622, 624, 626, 628, 630, 632, 634, 636, 638, 640, 642, 644, 646, 648, 650, 652, 654, 656, 658, 660, 662, 664, 666, 668, 670, 672, 674, 676, 678, 680, 682, 684, 686, 688, 690, 692, 694, 696, 698, 700, 702, 704, 706, 708, 710, 712, 714, 716, 718, 720, 722, 724, 726, 728, 730, 732, 734, 736, 738, 740, 742, 744, 746, 748, 750, 752, 754, 756, 758, 760, 762, 764, 766, 768, 770, 772, 774, 776, 778, 780, 782, 784, 786, 788, 790, 792, 794, 796, 798, 800, 802, 804, 806, 808, 810, 812, 814, 816, 818, 820, 822, 824, 826, 828, 830, 832, 834, 836, 838, 840, 842, 844, 846, 848, 850, 852, 854, 856, 858, 860, 862, 864, 866, 868, 870, 872, 874, 876, 878, 880, 882, 884, 886, 888, 890, 892, 894, 896, 898, 900, 902, 904, 906, 908, 910, 912, 914, 916, 918, 920, 922, 924, 926, 928, 930, 932, 934, 936, 938, 940, 942, 944, 946, 948, 950, 952, 954, 956, 958, 960, 962, 964, 966, 968, 970, 972, 974, 976, 978, 980, 982, 984, 986, 988, 990, 992, 994, 996, 998, 1000) are scattered throughout the chart, indicating water depths.
 - Navigation Lines:** Dashed lines with various symbols (anchors, triangles, etc.) representing navigational routes or boundaries.
 - Coordinates:** A grid of latitude and longitude lines is overlaid on the chart. Latitude ranges from approximately 19° to 21° North, and longitude ranges from approximately 103° to 105° East.
 - Other Labels:**
 - Kam. Jawa Laut** and **Kam. Langkah Baik** are labeled near the top center.
 - Buk. Kunchi** is labeled at the top right.
 - FI(2)R.10s SPJ W4**, **FI(2)G.10s SPJ W3**, **FI(2)G.10s SPJ E1**, **FI(2)R.6s SPJ E2**, **FI.R.5s SPJ E3**, **FI.R.5s PG1-2**, **FI.R.5s PG1-4**, **HLB1 FI.R.3s**, **FI.Y**, **FI.Y 9.6**, **FI.Y 11.9**, **FI.Y 15**, **FI.Y 17.5**, **FI.Y 22**, **FI.Y 23**, **FI.Y 29**, **FI.Y 31**, **FI.Y 32**, **FI.Y 33**, **FI.Y 34**, **FI.Y 35**, **FI.Y 36**, **FI.Y 37**, **FI.Y 38**, **FI.Y 39**, **FI.Y 40**, **FI.Y 41**, **FI.Y 42**, **FI.Y 43**, **FI.Y 44**, **FI.Y 45**, **FI.Y 46**, **FI.Y 47**, **FI.Y 48**, **FI.Y 49**, **FI.Y 50**, **FI.Y 51**, **FI.Y 52**, **FI.Y 53**, **FI.Y 54**, **FI.Y 55**, **FI.Y 56**, **FI.Y 57**, **FI.Y 58**, **FI.Y 59**, **FI.Y 60**, **FI.Y 61**, **FI.Y 62**, **FI.Y 63**, **FI.Y 64**, **FI.Y 65**, **FI.Y 66**, **FI.Y 67**, **FI.Y 68**, **FI.Y 69**, **FI.Y 70**, **FI.Y 71**, **FI.Y 72**, **FI.Y 73**, **FI.Y 74**, **FI.Y 75**, **FI.Y 76**, **FI.Y 77**, **FI.Y 78**, **FI.Y 79**, **FI.Y 80**, **FI.Y 81**, **FI.Y 82**, **FI.Y 83**, **FI.Y 84**, **FI.Y 85**, **FI.Y 86**, **FI.Y 87**, **FI.Y 88**, **FI.Y 89**, **FI.Y 90**, **FI.Y 91**, **FI.Y 92**, **FI.Y 93**, **FI.Y 94**, **FI.Y 95**, **FI.Y 96**, **FI.Y 97**, **FI.Y 98**, **FI.Y 99**, **FI.Y 100** are labeled along the bottom edge.
 - M** and **M bkSh** are labeled near the bottom right.
 - 0.15'E 17' (0')** is labeled near the bottom center.
 - 0.15'E 17'**

Block for Chart No 4042

HYDROGRAPHIC NOTE - Instructions

1. Mariners are requested to notify the Chief Hydrographer, Maritime and Port Authority of Singapore, when new or suspected dangers to navigation are discovered, changes are observed in aids to navigation or where corrections to nautical publications may be necessary. Reports, which cannot be confirmed or are lacking in certain details should not be withheld.
2. Any ambiguities of time, positioning and depth should be stressed and any firm expectation of being able to check the information provided on a following voyage should be mentioned.
3. Mariners using satellite position fixing systems, eg. GPS, should provide details of equipment and datum used (where applicable). Where bearings (true or magnetic) are taken visually or by radar to fix a position, it should include more than two objects in order to provide a check on its accuracy. A position may also be defined by bearing and distance from a conspicuous object eg. beacon, lighthouse etc.
4. The note should include a tracing or a digital image of the chart used and the details should be clearly marked.
5. Echo sounders frequently register greater depths than the advertised maximum depth for the equipment, eg. a trace appearing at 50 metres may be in fact be 550 metres or even 1050 metres for equipment whose maximum depth is 500 metres. Erroneous depths caused by 2nd transmission error can usually be recognised by the following:
 - (a) the tracing being weaker than normal for the depth registered,
 - (b) the trace appearing to pass through the transmission line,
 - (c) the feathery nature of the trace.
6. Upon receipt of a hydrographic note, a Notice to Mariners may be issued. The sender's vessel or name is quoted as the source unless the same information is also received in foreign Notices to Mariners.
7. Reports of shoals, uncharted dangers and defects in aids to navigation may also be made to the appropriate Singapore Port Operations Control Centre on VHF Channels 10, 12, 14, 68 or 73.

HYDROGRAPHIC NOTE

To:

Chief Hydrographer
Maritime and Port Authority of Singapore
7B Keppel Road #20-00 Tanjong Pagar Complex
Singapore 089055

Tel : (65) 6325 2027
Fax : (65) 6226 1076
Email : hydrographic@mpa.gov.sg

Sender's Contact Details :

Date :

Name of Vessel :

Address of Sender :

Tel : Fax :

Email :

Nature of Observation :

General Location :

Subject :

Position : Lat. Long.

Charts Used :

Date & Time of Observation :

Details :

.....

.....

Attachment :

Equipment Used :

Type of Position Fixing : GPS / DGPS Others :

Type of Echo Sounder :

Name and Signature :

Ship's/Company's Stamp :

To accompany Notices to Mariners

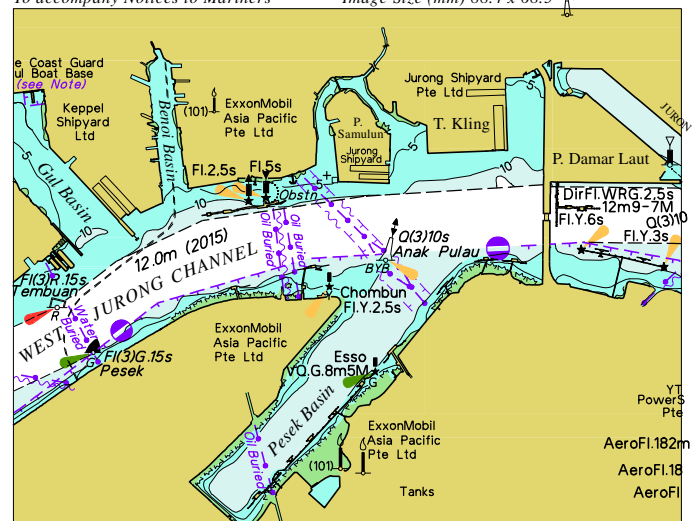
Image Size (mm) 88.4 x 68.5



Block for Chart No GSP1

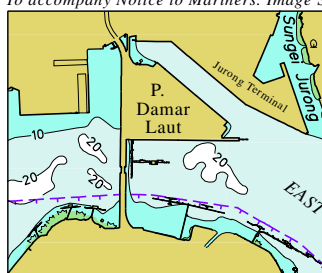
To accompany Notices to Mariners

Image Size (mm) 88.4 x 68.5

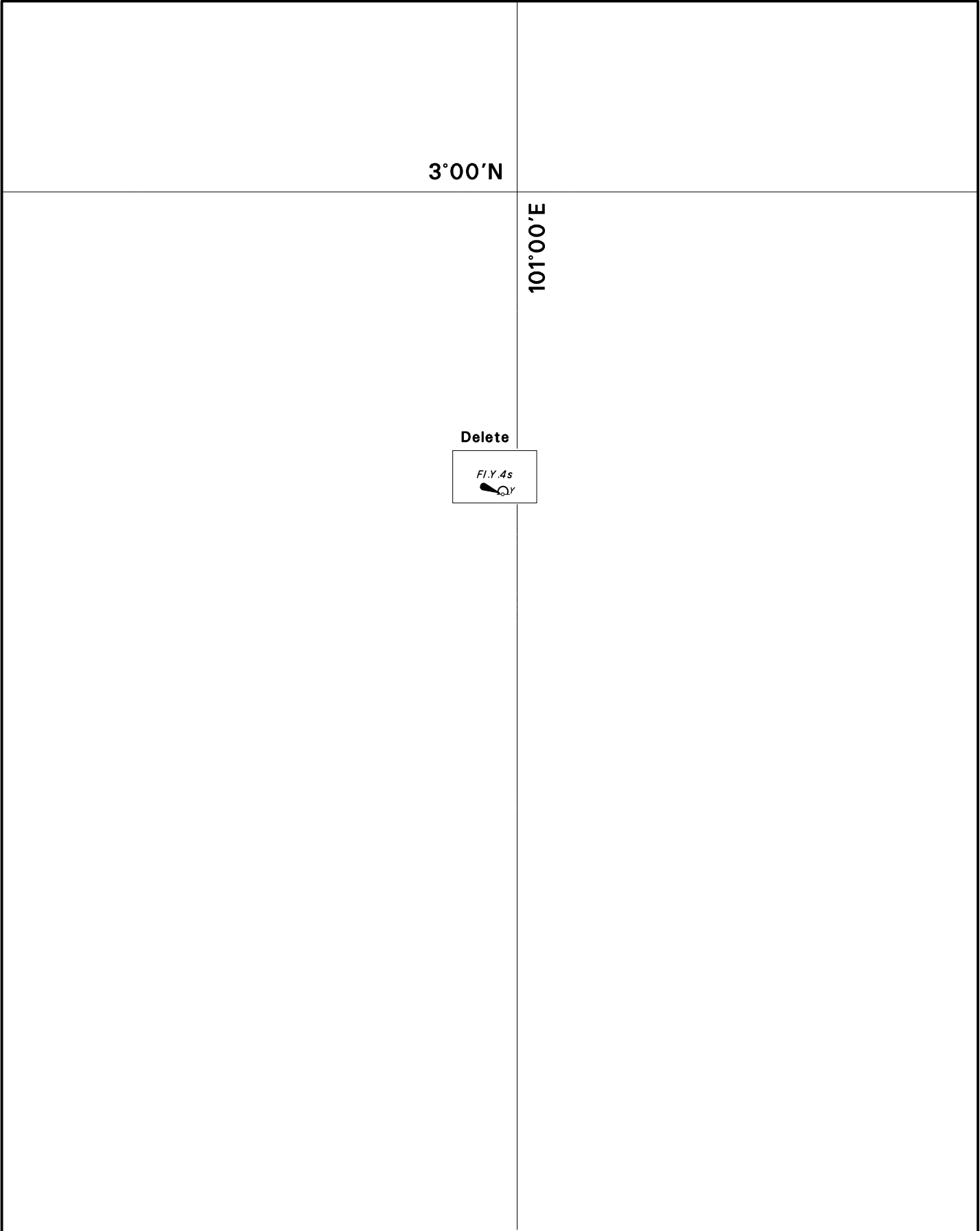


Block for Chart No SP1

To accompany Notice to Mariners. Image Size (mm) 42.0 by 35.0

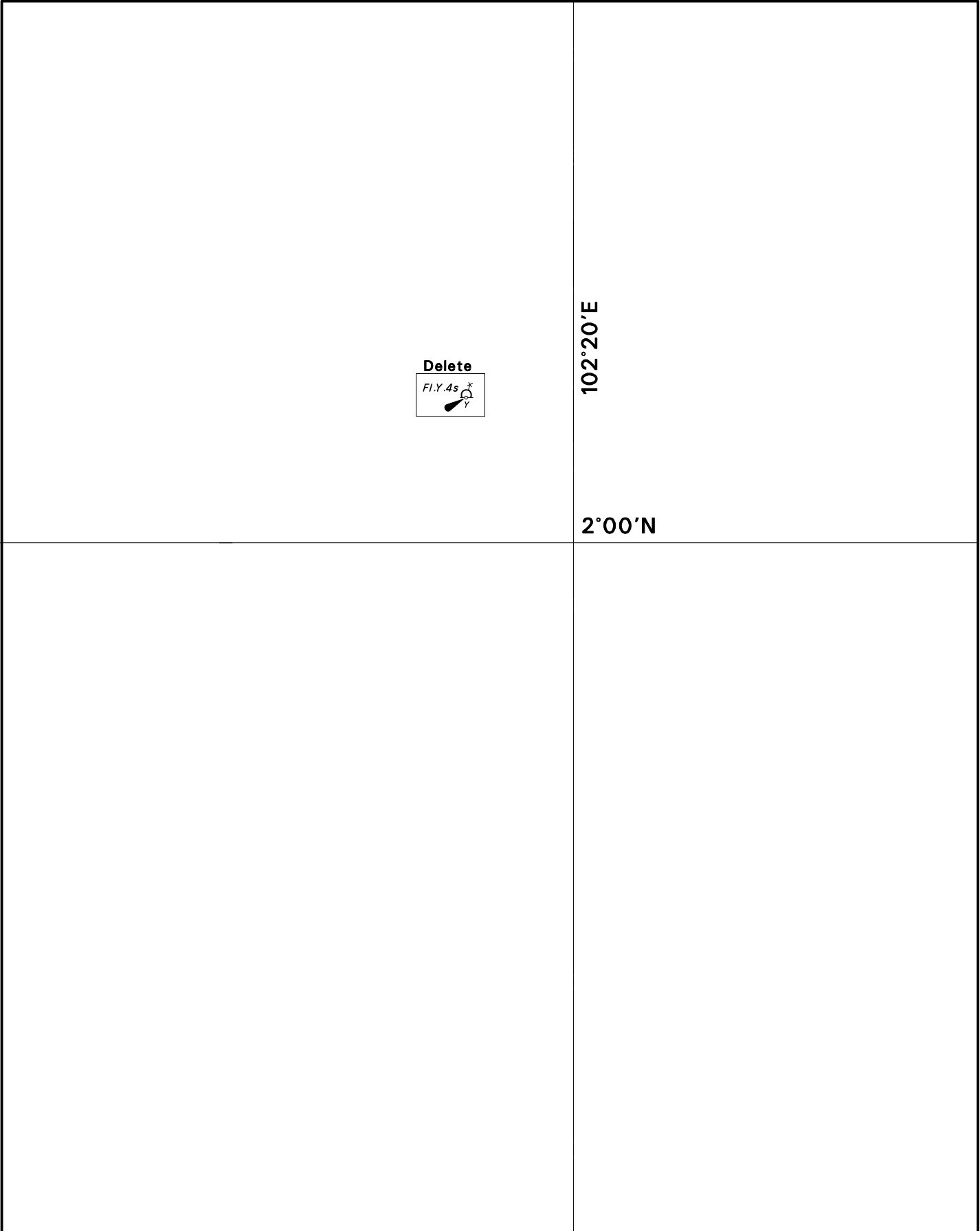


Block for Chart No 500



CORRECTION NO.	SNM EDN NO.	LAST CORR N NO.	CHART NO.	Location on Chart		
				X		
15	2/2019	4/2019	200			

Caution: some computer printers might distort the tracings.
Users are advised to check and, if necessary, adjust settings on the printer



CORRECTION NO.	SNM EDN NO.	LAST CORR N NO.	CHART NO.	Location on Chart		
				X		
16	2/2019	5/2019	201			

Caution: some computer printers might distort the tracings.
Users are advised to check and, if necessary, adjust settings on the printer