



SINGAPOREAN NOTICES TO MARINERS

	CONTENT	Page
I	Index of Charts & Publications Affected	26
II	Charts Corrections New Charts Publications	27
III	Marine Information	34
IV	Reprints of Radio Navigational Warnings	36

The monthly Notices to Mariners contain corrective information affecting charts published by the Hydrographic Department, Maritime and Port Authority of Singapore. The information contained in these Notices should be inserted on the charts affected. Notices under Section II apply only to the particular Singapore Chart(s) indicated.

Mariners are requested to notify the Chief Hydrographer, Maritime and Port Authority of Singapore, immediately on the discovery of new dangers or suspected dangers to navigation and of changes or defects in aids to navigation.

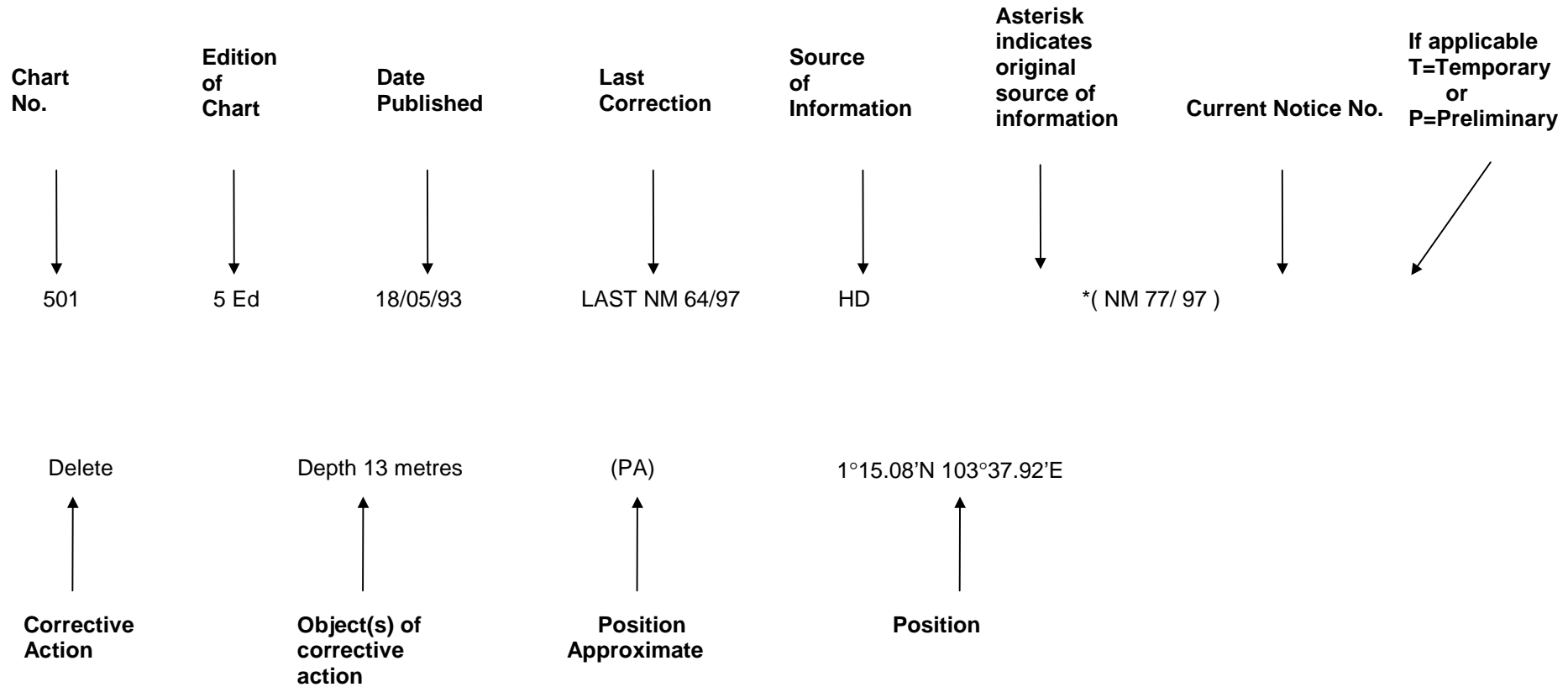
Copies of these notices can be obtained gratis from the Hydrographic Department, Maritime and Port Authority of Singapore or from Motion Smith.

Hydrographic Department
Maritime and Port Authority of Singapore
P.O. Box 313
PSA Building Post Office
Singapore 911141
Tel : (65) 3751600
Fax : (65) 2787646

WILSON CHUA
Chief Hydrographer

EXPLANATION OF FORMAT

The elements of a typical chart correction are explained below.



An asterisk (*) preceding a notice number indicates that the information is based on original Singapore source. The capital letter (T) or (P) denotes Temporary or Preliminary respectively.

Bearings are referred to the True Compass in degrees clockwise from 000° to 359°; those related to lights are from seaward. Heights are above mean sea level; only elevations of lights are above mean higher high water, or mean high water springs, as appropriate.

SECTION I
INDEX OF CHARTS AND PUBLICATIONS AFFECTED

NOTICES	SINGAPOREAN CHARTS	PAGE	NOTICES	SINGAPOREAN CHARTS	PAGE
*16	SP1/GSP1 301	27 29			
*17	SP1/GSP1 301	27 29			
*18	SP1/GSP1 113 114 304	27 28 28 30			
*19	SP1/GSP1 113 114 304	27 28 28 30			
*20	SP1/GSP1 303 502	27 30 32			
*21	SP1/GSP1 300 301 500 501	27 29 30 31 31			
*22	SP1/GSP1	28			
23	201	28			
*24	301 501	30 31			
25	202 501	29 31			
*26	Updating of Year 2002 Singapore Tide Tables And Port Information publication	34			

**SECTION II
SINGAPORE NOTICES**

SP1/GSP1	4Ed 27/09/01 Last NM 9/2002	HD/DB34/73,74-01	*(NM16/2002)
Insert	Green light-beacons with green conical Daymark, <i>PPT-1, FI G 5s</i>	1°17.08' N	103°45.20' E
	<i>PPT-2, FI (2)G 10s</i>	1°17.11' N	103°45.38' E
		PMN No. 135 of 2001	*(NM17/2002)
		HD/DB34/84-01	
Delete	Pecked line joining positions	1°16.79' N	103°46.20' E
	Yellow pillar light-buoy, <i>HK-3, FI Y 4s</i>	1°16.85' N	103°46.11' E
	Yellow pillar light-buoy, <i>HK-4, FI Y 2s</i>	1°17.23' N	103°45.47' E
	Yellow pillar light-buoy, <i>HK-2, FI Y 6s</i>	1°17.17' N	103°45.09' E
		1°16.80' N	103°44.87' E
	Yellow pillar light-buoy, <i>HK-1, FI Y 6s</i>	1°15.95' N	103°46.28' E
		1°16.46' N	103°46.62' E
		1°16.53' N	103°46.50' E
Delete	Legend <i>Works in progress (2001)</i>	1°16.35' N	103°45.70' E
		HD/DB34/09-02	*(NM18/2002)
Delete	Symbol and legend of light-beacon, <i>Punggol, FI (4)R 15s9m4M</i>	1°25.32' N	103°54.69' E
		HD/DB34/08-02	*(NM19/2002)
Insert	Red can light-buoy, <i>Punggol, FI (4)R 15s</i>	1°25.33' N	103°54.69' E
		HD/DB34/06-02	*(NM20/2002)
Insert	Yellow pillar light-buoy, <i>BCA-1, FI Y 6s</i>	1°20.38' N	104°02.80' E
		PMN No.158 of 2001	*(NM21/2002)
Delete	Pecked line joining positions	1°13.26' N	103°40.41' E
		1°13.69' N	103°40.21' E
Relocate	Yellow pillar. <i>PKDBH-9, FI (4) Y 15s</i> (1°13.262'N, 103°40.407'E)	1°13.18' N	103°40.27' E

**SECTION II
SINGAPORE NOTICES**

Insert	Pecked line joining positions	1°13.26' N	103°40.41' E
		1°13.18' N	103°40.27' E
	Yellow pillar, <i>PKDBH1, FI Y 4s</i>	1°13.50' N	103°40.12' E
		1°13.69' N	103°40.21' E

HD/DB34/11-02

***(NM22/2002)**

Delete	Red light-beacon, <i>FI(2)R 10s</i> together with the dolphin	1°15.75' N	103°48.59' E
---------------	---	------------	--------------

113	1Ed 08/01/98	HD/DB34/09-02	*(NM18/2002)
------------	---------------------	----------------------	---------------------

Delete	Symbol and legend of light-beacon, <i>Punggol, FI (4)R 15s9m4M</i>	1°25.315'N	103°54.690'E
---------------	--	------------	--------------

HD/DB34/08-02

***(NM19/2002)**

Insert	Red can light-buoy, <i>Punggol, FI (4)R 15s</i>	1°25.332'N	103°54.690'E
---------------	---	------------	--------------

114	1Ed 01/07/98 Last NM 118/2001	HD/DB34/09-02	*(NM18/2002)
------------	--------------------------------------	----------------------	---------------------

Delete	Symbol and legend of light-beacon, <i>Punggol, FI (4)R 15s9m4M</i>	1°25.315'N	103°54.690'E
---------------	--	------------	--------------

HD/DB34/08-02

***(NM19/2002)**

Insert	Red can light-buoy, <i>Punggol, FI (4)R 15s</i>	1°25.332'N	103°54.690'E
---------------	---	------------	--------------

201	1Ed 01/10/98 Last NM 66/2001	MMD NM No. 37/2001	(NM23/2002)
------------	-------------------------------------	---------------------------	--------------------

Insert	White light-beacon, <i>Parit Jawa, FI R 4s11m5M</i>	1°56.68' N	102°37.65' E
---------------	---	------------	--------------

**SECTION II
SINGAPORE NOTICES**

202	3Ed 02/02/02	BA NM No.50/5004/01	(NM25/2002)
Insert	Yellow pillar light-buoy with topmark 'X', <i>FI(5)Y 25s</i>	1°03.99' N	103°45.12' E
<hr/>			
300	4Ed 27/09/01 Last NM 121/2001	PMN No.158 of 2001	*(NM21/2002)
Delete	Pecked line joining positions	1°13.26' N 1°13.69' N	103°40.41' E 103°40.21' E
Relocate	Yellow pillar, <i>PKDBH-9, FI (4) Y 15s</i> (1°13.262'N, 103°40.407'E)	1°13.18' N	103°40.27' E
Insert	Pecked line joining positions	1°13.26' N 1°13.18' N	103°40.41' E 103°40.27' E
	Yellow pillar, <i>PKDBH1, FI Y 4s</i>	1°13.50' N 1°13.69' N	103°40.12' E 103°40.21' E
<hr/>			
301	4Ed 27/09/01 Last NM 123/2001	HD/DB34/73,74-01	*(NM16/2002)
Insert	Green light-beacons with green conical Daymark, <i>PPT-1, FI G 5s</i> <i>PPT-2, FI (2)G 10s</i>	1°17.08' N 1°17.11' N	103°45.20' E 103°45.38' E
		PMN No. 135 of 2001 HD/DB34/84-01	*(NM17/2002)
Delete	Pecked line joining positions	1°16.77' N	103°46.03' E
	Yellow pillar light-buoy, <i>HK-3, FI Y 4s</i>	1°16.88' N	103°46.10' E
	Yellow pillar light-buoy, <i>HK-4, FI Y 2s</i>	1°17.29' N	103°45.42' E
	Yellow pillar light-buoy, <i>HK-2, FI Y 6s</i>	1°17.24' N	103°45.10' E
		1°16.78' N	103°44.83' E
		1°16.71' N	103°44.94' E
		1°16.74' N	103°44.96' E
	Yellow pillar light-buoy, <i>HK-1, FI Y 6s</i>	1°15.95' N	103°46.28' E
		1°16.48' N	103°46.59' E
		1°16.53' N	103°46.50' E
Delete	Legend <i>Works in progress (2001)</i>	1°16.34' N	103°45.75' E

**SECTION II
SINGAPORE NOTICES**

		PMN No.158 of 2001	*(NM21/2002)
Delete	Pecked line joining positions	1°13.26' N	103°40.41' E
		1°13.69' N	103°40.21' E
Relocate	Yellow pillar, <i>PKDBH-9, FI (4) Y 15s</i> (1°13.262'N, 103°40.407'E)	1°13.18' N	103°40.27' E
Insert	Pecked line joining positions	1°13.26' N	103°40.41' E
		1°13.18' N	103°40.27' E
	Yellow pillar, <i>PKDBH1, FI Y 4s</i>	1°13.50' N	103°40.12' E
		1°13.69' N	103°40.21' E
		HD/Job No. 89N/2001	*(NM24/2002)
Delete	Depth 14.7m together with the enclosed 15 metre Contour	1°13.98' N	103°47.08' E
Insert	Depth 15.2m	1°13.98' N	103°47.09' E
<hr/>			
303	1Ed 01/10/98 Last NM 118/2001	HD/DB34/06-02	*(NM20/2002)
Insert	Yellow pillar light-buoy, <i>BCA-1, FI Y 6s</i>	1°20.38' N	104°02.80' E
<hr/>			
304	1Ed 01/11/98 Last NM 124/2001	HD/DB34/09-02	*(NM18/2002)
Delete	Symbol and legend of light-beacon, <i>Punggol, FI (4)R 15s9m4M</i>	1°25.32' N	103°54.69' E
		HD/DB34/08-02	*(NM19/2002)
Insert	Red can light-buoy, <i>Punggol, FI (4)R 15s</i>	1°25.33' N	103°54.69' E
<hr/>			
500	2Ed 15/11/00 Last NM9/2002	PMN No.158 of 2001	*(NM21/2002)

**SECTION II
SINGAPORE NOTICES**

Delete	Pecked line joining positions	1°13.26' N	103°40.41' E
		1°13.69' N	103°40.21' E
Relocate	Yellow pillar, PKDBH-9, FI (4) Y 15s (1°13.262'N, 103°40.407'E)	1°13.18' N	103°40.27' E
Insert	Pecked line joining positions	1°13.26' N	103°40.41' E
		1°13.18' N	103°40.27' E
	Yellow pillar, PKDBH1, FI Y 4s	1°13.50' N	103°40.12' E
		1°13.69' N	103°40.21' E

501	2Ed 15/11/00 Last NM9/2002	PMN No.158 of 2001	*(NM21/2002)
Delete	Pecked line joining positions	1°13.26' N	103°40.41' E
		1°13.69' N	103°40.21' E
Relocate	Yellow pillar, PKDBH-9, FI (4) Y 15s (1°13.262'N, 103°40.407'E)	1°13.18' N	103°40.27' E
Insert	Pecked line joining positions	1°13.26' N	103°40.41' E
		1°13.18' N	103°40.27' E
	Yellow pillar, PKDBH1, FI Y 4s	1°13.50' N	103°40.12' E
		1°13.69' N	103°40.21' E
		HD/Job No. 89N/2001	*(NM24/2002)
Substitute	Depth 15.2m for 14.7m	1°13.98' N	103°47.08' E
		BA NM No.50/5004/01	(NM25/2002)
Insert	Yellow pillar light-buoy with topmark ' X ', FI(5)Y 25s	1°03.99' N	103°45.12' E

**SECTION II
SINGAPORE NOTICES**

502	2Ed 15/11/00 Last NM 118/2001	HD/BD34/06-02	*(NM20/2002)
Insert	Yellow pillar light-buoy, BCA-1, Fl Y 6s	1°20.38' N	104°02.80' E

**SECTION II
TEMPORARY AND PRELIMINARY NOTICES**

Nil

**SECTION III
MARINE INFORMATION**

***(NM26/2002) UPDATING OF PUBLICATION "YEAR 2002 SINGAPORE TIDE TABLES AND PORT INFORMATION"**

1 Page 337 - TANJONG PENJURU (CALTEX SINGAPORE PTE LTD)

Amend:

Berth	Former Depth Alongside (Year Surveyed)	New Depth Alongside (Year surveyed)
1	13.9m (1995)	13.3m (2001) *
2	15.3m (1995)	14.6m (2001) *

2 Delete from list

NAME OF BEACON/ BUOY	POSITION IN WGS 84		STRUCTURE COLOUR & SHAPE	LIGHT CHARACTERISTICS
	LAT. (N)	LONG. (E)		
Page 316 - EAST JURONG FAIRWAY				
HK – 1 Buoy *	01°15.946' *	103°46.279' *	Yellow pillar *	Fl Y 6s *
Page 316 - TERUMBU RETAN DARAT				
HK – 2 Buoy *	01°17.169' *	103°45.087' *	Yellow pillar *	Fl Y 6s *
HK – 3 Buoy *	01°16.847' *	103°46.110' *	Yellow pillar *	Fl Y 4s *
HK – 4 Buoy *	01°17.229' *	103°45.471 *	Yellow pillar *	Fl Y 2s *

3 Page 316 - PASIR PANJANG TERMINAL

Insert to list

PPT-1 Beacon *	01°17.084' *	103°45.205' *	Green conical on green tubular tower on bund, 3m *	Fl G 5s 5m3M *
PPT-2 Beacon *	01°17.112' *	103°45.385' *	Green conical on green tubular tower on bund, 3m *	Fl(2)G 10s 5m3M *

**SECTION III
MARINE INFORMATION**

	NAME OF BEACON/ BUOY	POSITION IN WGS 84		STRUCTURE COLOUR & SHAPE	LIGHT CHARACTERISTICS
		LAT. (N)	LONG. (E)		
4	Page 321 -	KEPPEL HARBOUR			

Delete from list

Keppel Beacon	01°15.749'	103°48.589'	Red tubular tower on dolphin, 2m	Fl(2)R 10s3m3M
*	*	*	*	*

5	Page 324 -	SERANGOON HARBOUR			
----------	-------------------	--------------------------	--	--	--

Delete from list

Punggol Beacon	01°25.315'	103°54.690'	Red metal staff on red piles	Fl(4)R 15s9m4M
*	*	*	*	*

Insert to list

Punggol Buoy	01°25.332'	103°54.690'	Red can	Fl(4)R 15s
*	*	*	*	*

6	Page 311 -	NAVIGATIONAL CHANNELS – CONTROLLING DEPTHS		
----------	-------------------	---	--	--

S/No.	Locations	New Controlling Depth (m)	Former Controlling Depth (m)
-------	-----------	------------------------------	---------------------------------

Amend

14	Jong Fairway	15.0 *	14.7 *
----	--------------	-----------	-----------

Delete from list

S/No.	Locations	New Controlling Depth (m)
-------	-----------	---------------------------

24	Sultan Fairway	13.6 *
*	*	*

Note: * Indicates amendments/additions/deletions

7	Page 259 -	PORT OF SINGAPORE – ANCHORAGES AND FAIRWAYS	
----------	-------------------	--	--

Insert The accompanying block showing the anchorages (Chartlet B)

SECTION IV
REPRINT OF RADIO NAVIGATIONAL WARNINGS

Nil

HYDROGRAPHIC NOTE

Date.....

Ref. No

Name of vessel or address of sender:

.....
.....
.....

General locality:.....

Subject:

Approx.Position: Lat Long

Charts affected:

Latest Notices to Mariners held

Publications affected (Edition No. and date of latest supplement)
.....
.....

Details:-

.....
.....
.....
.....
.....

Signature of

Observer/Reporter: Ship' s stamp

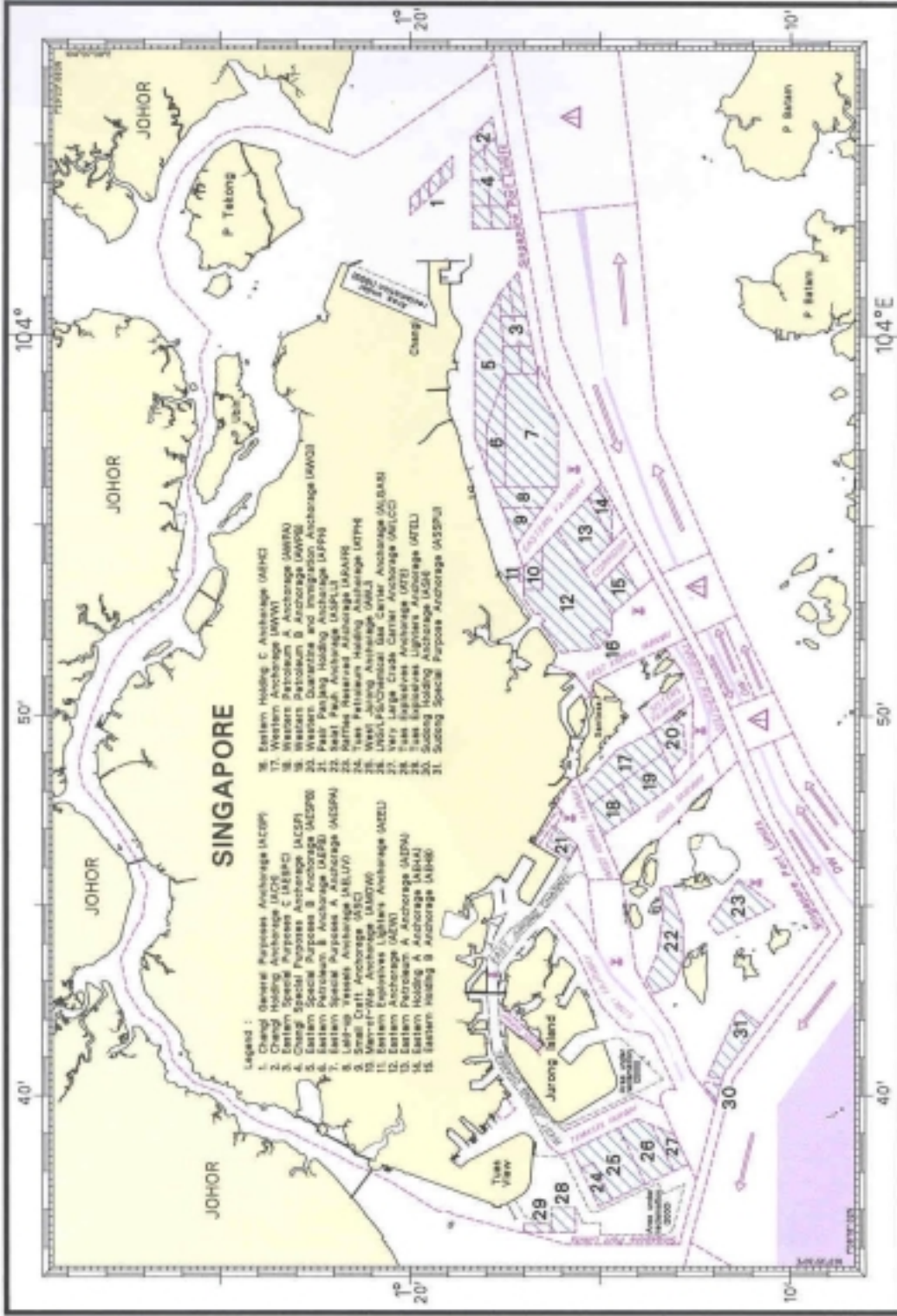
INSTRUCTION

1. Mariners are requested to notify the Chief Hydrographer, Maritime and Port Authority of Singapore, when new or suspected dangers to navigation are discovered, changes observed in aids to navigation or corrections to nautical publications seem to be necessary.
2. The instructions below should be followed as closely as possible to facilitate easy interpretation of information.
3. A position which is fixed by sextant angles, radar ranges or bearings (true or magnetic) should include more than two objects in order to provide a check on its accuracy. When there is a series of fixes along a ship's track only the method of fixing and the objects used need to be indicated. A position may also be defined by bearing and distance from a conspicuous object eg. beacon, lighthouse etc.
4. A report should include a tracing of the largest scale chart and the details should be marked in red; adequate information must be traced in black ink to enable the amendments to be fitted correctly.
5. The method in which soundings are taken should be stated. In case of echo sounding, the trace should be marked with date, times, depths etc. and forwarded with the report. It is important to state whether the echo sounder is set to register depths below the surface or below the keel; in the latter case the vessel's draught at the time of observation should be given. The make, name and type of set should also be stated.
6. Modern echo sounders frequently register greater depths than the advertised maximum for the set, eg. with a set whose maximum is 500 metres, a trace appearing at 50 metres may in fact be 550 metres or even 1050 metres. Erroneous deep soundings caused by 2nd transmission error can usually be recognised by the following:-
 - (a) the tracing being weaker than normal for the depth registered,
 - (b) the trace appearing to pass through the transmission line,
 - (c) the feathery nature of the trace.
7. Reports which cannot be confirmed or are lacking in certain details should not be withheld. Shortcomings should be stressed and any firm expectation of being able to check the information on a succeeding voyage should be mentioned.
8. Reports of shoal soundings, uncharted dangers and defects in aids to navigation may, at the mariner's discretion, be made by radio to Singapore Port Operations on VHF Channels 12 or 20 or to Chief Hydrographer, Maritime and Port Authority of Singapore, through Singapore Radio, call-sign 9VG, by wireless telegraphy.

Note:-

An acknowledgement of receipt will be sent and the information then used to the best advantage. When a Notice to Mariners is issued the sender's vessel or name is quoted as authority unless the same information is also received in a foreign Notices to Mariners. Further communication should be expected only if the information is of outstanding value or has unusual features.

PORT OF SINGAPORE - ANCHORAGES



POSITIONS IN WGS 84