



SINGAPOREAN NOTICES TO MARINERS

	CONTENT	Page
I	Index of Charts & Publications Affected	27
II	Charts Corrections New Charts Publications	28
III	Marine Information	32
IV	Reprints of Radio Navigational Warnings	33
V	Reprint of Admiralty Notices to Mariners for Dual Badged Charts	34

The monthly Notices to Mariners contain corrective information affecting charts published by the Hydrographic Department, Maritime and Port Authority of Singapore. The information contained in these Notices should be inserted on the charts affected. Notices under Section II apply only to the particular Singapore Chart(s) indicated.

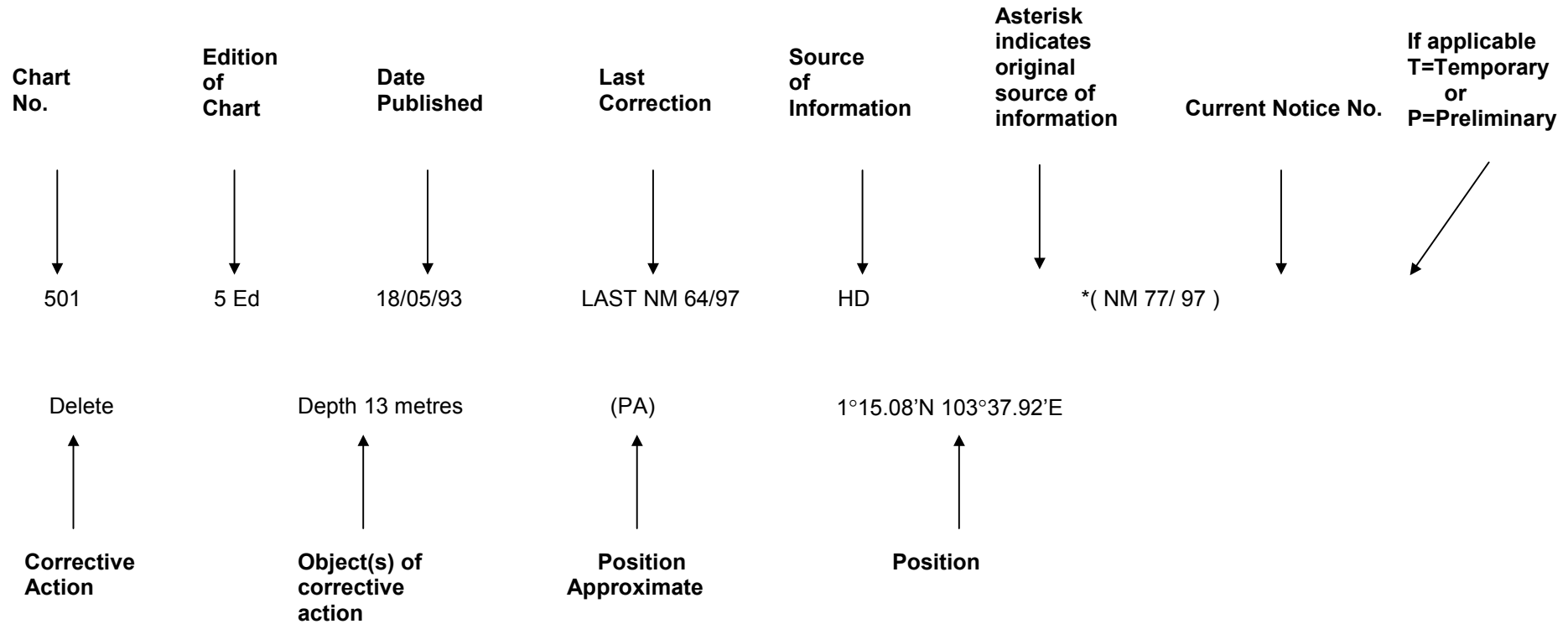
Mariners are requested to notify the Hydrographer, Maritime and Port Authority of Singapore, immediately on the discovery of new dangers or suspected dangers to navigation and of changes or defects in aids to navigation.

Copies of these notices can be obtained gratis from the Hydrographic Department, Maritime and Port Authority of Singapore or from Motion Smith telephone number (65) 62205098. The notices can also be accessed from MPA webpage.

Hydrographic Department
Maritime and Port Authority of Singapore
P.O. Box 313
PSA Building Post Office
Singapore 911141
Tel : (65) 63751550
Fax : (65) 62787646
Webpage : www.mpa.gov.sg/homepage/publications/noticesmari.html

EXPLANATION OF FORMAT

The elements of a typical chart correction are explained below.



An asterisk (*) preceding a notice number indicates that the information is based on original Singapore source. The capital letter (T) or (P) denotes Temporary or Preliminary respectively.

Bearings are referred to the True Compass in degrees clockwise from 000° to 359°; those related to lights are from seaward. Heights are above mean sea level; only elevations of lights are above mean higher high water, or mean high water springs, as appropriate.

All positions are in (WGS 84).

SECTION I
INDEX OF CHARTS AND PUBLICATIONS AFFECTED

NOTICES	SINGAPORE CHARTS	PAGE	NOTICES	SINGAPORE CHARTS	PAGE
*14	New Edition of Singapore Chart Published	28			
*15	500 501	29 30			
*16	501	30			
*17	202 500	29 29			
*18	501	30			
*19	501	30			
20	202 501	29 30			
*21	202 502	29 30			
*22	Corrigendum Singapore Notices to Mariners Edition No.1 of 2004	32			
*23	New Edition Singapore Electronic Navigational Charts (ENC)	32			

**SECTION II
SINGAPORE NOTICES**


***(NM14/2004) NEW EDITION OF SINGAPORE CHART PUBLISHED**

Chart No.	Publication Date	Title, Scale and Limit	Price (Excluding GST)
SP1	10 Feb 2004	Anchorages and Aids to Navigation Scale 1 : 60 000 1°08.20'N 1°29.40'N 103°36.10'E 104°07.20'E Remarks: a) Realignment of the Traffic Separation Schemes in Selat Sinki and Southern Fairway. b) Realignment of the Sinki, Temasek, West Keppel and Jong Fairways. c) Revised limits of Very Large Crude Carrier anchorage, LNG/LPG/Chemical Gas Carrier anchorage and Western Petroleum A and B anchorage. d) The existing chart of the same number published on 15/10/02 is superseded. (Previous NM8/60P/2003 is cancelled)	S\$39.00
GSP1	10 Feb 2004	Anchorages and Aids to Navigation (With Area Reference) Scale 1 : 60 000 1°08.20'N 1°29.40'N 103°36.10'E 104°07.20'E Remarks: a) Realignment of the Traffic Separation Schemes in Selat Sinki and Southern Fairway. b) Realignment of the Sinki, Temasek, West Keppel and Jong Fairways. c) Revised limits of Very Large Crude Carrier anchorage, LNG/LPG/Chemical Gas Carrier anchorage and Western Petroleum A and B anchorage. d) The existing chart of the same number published on 15/10/02 is superseded. (Previous NM8/60P/2003 is cancelled)	S\$39.00

**SECTION II
SINGAPORE NOTICES**

202	3Ed 02/01/02 Last NM10/2004	POWER GAS	*(NM17/2004)
Insert	Symbol for submarine gas pipeline joining positions	1°15.09'N 1°14.02'N 1°13.55'N 1°13.01'N 1°12.07'N 1°10.72'N 1°08.76'N 1°06.71'N 1°06.65'N 1°07.01'N 1°07.00'N 1°06.85'N 1°06.51'N	103°41.88'E 103°41.78'E 103°41.50'E 103°40.90'E 103°40.37'E 103°40.33'E 103°41.22'E 103°44.71'E 103°45.24'E 103°46.81'E 103°47.08'E 103°47.30'E 103°47.48'E
	(Previous NM6/49P/2003 is cancelled)		

		BA NM No. 1/47/2004	(NM20/2004)
Insert	 Rep (2003)	1°07.68'N	103°46.63'E

		HD/Job No. 05N/04	*(NM21/2004)
Insert	Depth 44 enclosed by  Obstn	1°17.56'N	103°54.62'E

500	3Ed 15/10/02 Last NM11/2004	HD	*(NM15/2004)
Insert	Accompanying block in the vicinity of Temasek Fairway	1°15.00'N	103°40.00'E

		POWER GAS	*(NM17/2004)
Insert	Symbol for submarine gas pipeline joining positions	1°11.66'N 1°10.72'N 1°09.48'N 1°08.97'N 1°08.76'N 1°08.29'N 1°07.87'N 1°07.45'N 1°06.81'N 1°06.75'N	103°40.33'E 103°40.33'E 103°40.87'E 103°41.05'E 103°41.22'E 103°41.88'E 103°42.57'E 103°43.27'E 103°44.45'E 103°44.61'E
	(Chart border)		
	(Previous NM 6/49P/2003 is cancelled)		

**SECTION II
SINGAPORE NOTICES**

501	3Ed 15/09/03 Last NM11/2004	HD	*(NM15/2004)
Insert	Accompanying block in the vicinity of Temasek Fairway	1°13.50'N	103°40.00'E
		HD	*(NM16/2004)
Insert	Accompanying block in the vicinity of Jong Fairway	1°12.00'N	103°47.00'E
		HD/DB34/45-2003	*(NM18/2004)
Insert	Yellow  Balok, Fl. Y. 2s	1°10.12'N	103°43.27'E
		HD	*(NM19/2004)
Insert	 , Gusong Boarding Ground	1°10.47'N	103°46.89'E
		BA NM No.1/47/2004	(NM20/2004)
Insert	 Rep (2003)	1°07.68'N	103°46.63'E
<hr/>			
502	2Ed 15/11/00 Last NM9/2004	HD/Job No.05N/04	*(NM21/2004)
Insert	Depth 44 enclosed by  Obstn	1°17.56'N	103°54.62'E
<hr/>			

**SECTION II
TEMPORARY AND PRELIMINARY NOTICES**

Nil

**SECTION III
MARINE INFORMATION**

***(NM22/2004) CORRIGENDUM SINGAPORE NOTICES TO MARINERS EDITION NO. 1 OF 2004**

1 For Chart 500

Substitute *3Ed 15/10/02 Last NM78/2003* for *3Ed 15/10/02 Last NM78/2002*

***(NM23/2004) NEW EDITION SINGAPORE ELECTRONIC NAVIGATIONAL CHARTS (ENC) (2004.1) WILL
BE RELEASED ON 10TH FEBRUARY 2004**

For more information:

Please call Ms Jenny Goh/Siti at Tel : 6375 1575/6 or visit our website:

<http://www.mpa.gov.sg/homepage/services/enc>

SECTION IV
REPRINT OF RADIO NAVIGATIONAL WARNINGS

Nil

SECTION V
REPRINT OF ADMIRALTY NOTICES TO MARINERS
FOR DUAL BADGED CHART

New Editions of Dual Badged Charts

Chart	Title and other remarks	Scale	<i>Charts to be Superseded</i>
4030	Port of Singapore, West Jurong Approaches and Fairways. Includes amendments to fairways, depths, restricted area, anchorage areas, submarine pipeline and port developments.	1:10,000	4030
4031	Port of Singapore, South Jurong Island and its Approaches. <i>Includes changes to fairways, restricted area, depths, anchorage areas, submarine pipeline, buoyage and port developments.</i>	1:10,000	4031
4032	Port of Singapore, Sinki Fairway. <i>Includes changes to Sinki Traffic Separation Scheme, fairways, restricted areas, depths, buoyage and port developments</i>	1:10,000	4032
4033	Port of Singapore, Tuas Bay, West Jurong Channel and Pesek Basin. <i>Includes changes to fairways, restricted area, depths, buoyage, and port developments.</i>	1:10,000	4033
4038	Malaysia and Singapore, Johor Strait Western Part. A Town Reach. B Malaysia, Pelabuhan Tanjung Pelepas. <i>Includes changes to fairways, restricted area, depths, anchorage areas, submarine pipeline, submarine cable, buoyage and port developments.</i>	1:30,000 1:30,000 1:15,000	4038
4040	Singapore, Indonesia and Malaysia, Tuas View to Pulau Sakijang Bendera (S. John;s Island). <i>Includes changes to Sinki Traffic Separation Scheme, fairways, restricted areas, depths, anchorage areas, submarine pipeline, submarine cable, buoyage and port developments.</i>	1:30 000	4040

SECTION V
REPRINT OF ADMIRALTY NOTICES TO MARINERS
FOR DUAL BADGED CHART

5539*/03 SINGAPORE STRAIT – Indonesia – Pulau Batam North Coast – Batuampar – Port development.
Coastline. Beacons. Obstructions

Source: UK Hydrographic Office

Chart 4041 [*previous update 5053/03*] WGS84 DATUM

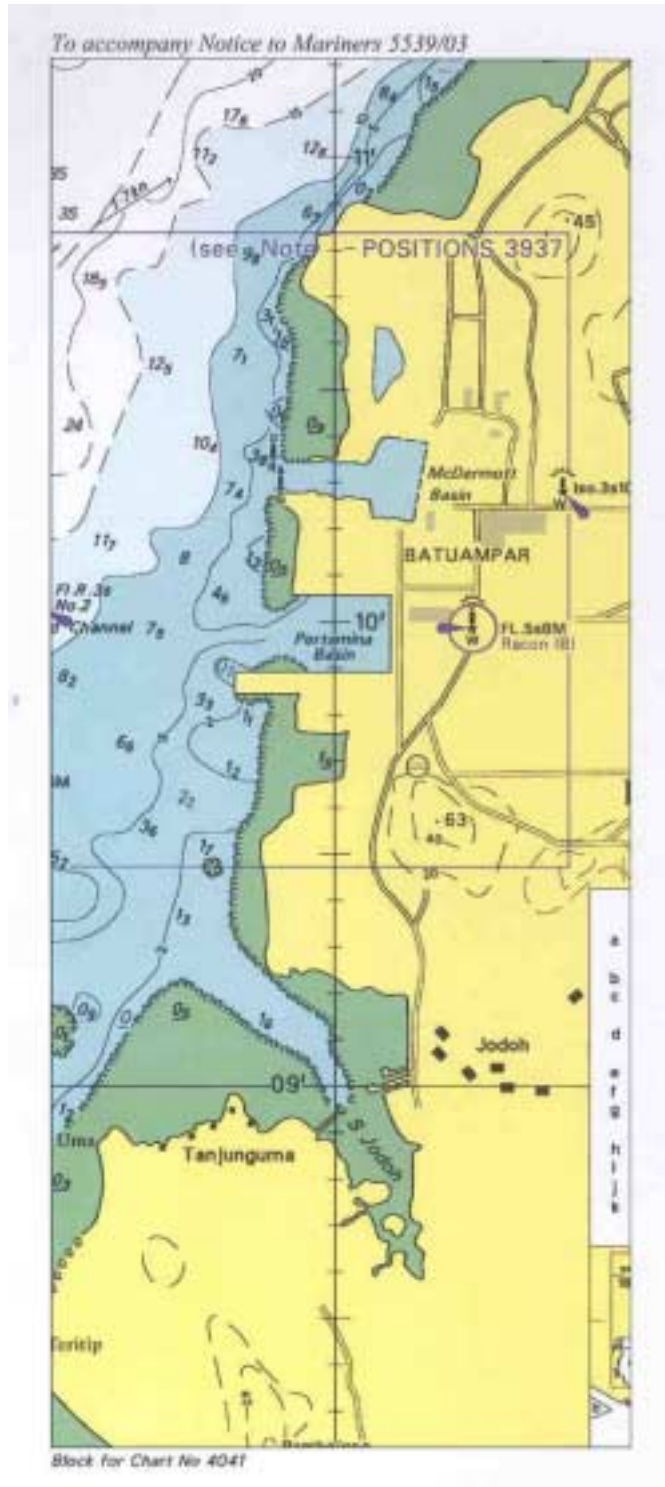
Insert The accompanying block, showing amendments to
 coastline, port developments, beacons and
 obstructions, centred on:

1°09'.75N., 104°00'.00E.

Source: Weekly Edition 51, dated 18th December 2003

SECTION V
REPRINT OF ADMIRALTY NOTICES TO MARINERS
FOR DUAL BADGED CHART

NOTE: This block correction is for illustration only. The actual block correction can be obtained from the Admiralty Notices to Mariners Weekly Edition 51 of 2003 or from web site: http://www.ukho.gov.uk/wnm/2003/week51_5539-5671/chart4041nm5539.pdf



SECTION V
REPRINT OF ADMIRALTY NOTICES TO MARINERS
FOR DUAL BADGED CHART

47*/04 SINGAPORE STRAIT – Indonesia – Helen Mar Reef Northeastwards – Wreck.

Source: Indonesian Notice 32/233/03

Chart 4039 [*previous update 5053/03*] WGS84 DATUM

Insert	 <i>Rep (2003)</i>	1°07'.685N.,	103° 46'.635E.
--------	---	--------------	----------------

Chart 4040 [*previous update 5053/03*] WGS84 DATUM

Insert	 <i>Rep (2003)</i>	1°07'.685N.,	103° 46'.635E.
--------	---	--------------	----------------

48*/04 SINGAPORE – Keppel Harbour – Brani Terminal – Berth B8 - Depth.

Source: Maritime and Port Authority Singapore DBNM 40/03

Chart 4037 [*previous update 5325/03*] WGS84 DATUM

Amend	alongside depth to, <i>14.4m (2003)</i> , centred on:	1°15'.548N.,	103° 50'.489E.
-------	---	--------------	----------------

49*/04 SINGAPORE STRAIT – Singapore – Outer Shoal – Light-beacon.

Light List Vol. F, 2003/04, 1718.7

Source: Maritime and Port Authority Singapore DBNM 41/03

Chart 4037 [*previous update 48/04*] WGS84 DATUM

Move	Green light-beacon, Fl.G.5s8m5M Outer Shoal from:	1°14'.999N,	103° 51'.810E.
	to:	1°15'.019N,	103° 51'.811E.

95*/04 SINGAPORE – Pasir Panjang Wharves – Berths PW5 – PW8 - Depths.

Source: Maritime and Port Authority Singapore DBNM 43/03

Chart 4034 [*previous update 3324/04*] WGS84 DATUM

Amend	Alongside depth to, <i>9.8m (2003)</i> , centred on:	1°16'.569N,	103° 46'.963E.
	Alongside depth to, <i>9.0m (2003)</i> , centred on:	1°16'.631N,	103° 46'.862E.
	Alongside depth to, <i>10.2m (2003)</i> , centred on:	1°16'.700N,	103° 46'.745E.
	Alongside depth to, <i>10.9m (2003)</i> , centred on:	1°16'.738N,	103° 46'.683E.

Chart 4035 [*previous update 5053/03*] WGS84 DATUM

Amend	Alongside depth to, <i>9.8m (2003)</i> , centred on:	1°16'.569N,	103° 46'.963E.
	Alongside depth to, <i>9.0m (2003)</i> , centred on:	1°16'.631N,	103° 46'.862E.
	Alongside depth to, <i>10.2m (2003)</i> , centred on:	1°16'.700N,	103° 46'.745E.
	Alongside depth to, <i>10.9m (2003)</i> , centred on:	1°16'.738N,	103° 46'.683E.

SECTION V
REPRINT OF ADMIRALTY NOTICES TO MARINERS
FOR DUAL BADGED CHART

98(P)/04 SINGAPORE – Western part – Traffic separation schemes. Fairways. Anchorages areas.

Source: Maritime and Port Authority, Singapore

1. Mariners are advised that the following changes come into effect on 22nd January 2004.
 - a) Realignment of the Traffic Separation Schemes in Selat Sinki and Southern Fairway.
 - b) Realignment of the Sinki, Temasek, West Keppel and Jong Fairways.
 - c) Revised limits of Very Large Crude Carrier anchorage, LNG/LPG/Chemical Gas Carrier anchorage and Western Petroleum A and B anchorages.
2. The accompanying diagram shows these changes that will be included on charts to be published in January and February 2004.

Charts affected – 4030 – 4031 – 4032 – 4033 – 4034 – 4035 – 4037 – 4038 – 4039 – 4040

Source: Weekly Edition 1, dated 1 January 2004

To accompany Notice to Mariners 98(P)/04

Singapore – Western part – Traffic Separation Schemes, Fairways and Anchorage Areas



SECTION V
REPRINT OF ADMIRALTY NOTICES TO MARINERS
FOR DUAL BADGED CHART

162(P)/04 SOUTH CHINA SEA – Singapore Strait to Songkhla – Submarine cables.

Source: Singapore Telecommunications Limited (SingTel)

1. Segments A and B of the Thailand Indonesia Singapore Cable Network (TIS) have been laid between the following positions (WGS84):

2. Segment A

1°18'.66N, 104°00'.15E (shore)
 1°18'.34N, 104°00'.25E
 1°16'.65N, 104°03'.04E
 1°16'.34N, 104°03'.34E
 1°15'.67N, 104°03'.64E
 1°15'.33N, 104°03'.44E
 1°13'.98N, 104°03'.63E
 1°13'.45N, 104°02'.03E
 1°12'.93N, 103°58'.24E
 1°10'.98N, 103°54'.77E
 1°10'.70N, 103°54'.72E
 1°09'.71N, 103°55'.50E
 1°08'.55N, 103°55'.35E (shore)

3. Segment B

1°15'.67N, 104°03'.64E
 (Segment A)
 1°15'.80N, 104°04'.83E
 1°15'.96N, 104°07'.76E
 1°16'.83N, 104°10'.25E
 1°17'.27N, 104°10'.60E
 1°17'.90N, 104°14'.28E
 1°17'.70N, 104°15'.91E
 1°18'.58N, 104°17'.00E
 1°18'.71N, 104°18'.37E
 1°26'.96N, 104°28'.80E
 1°28'.92N, 104°29'.22E
 1°29'.50N, 104°28'.84E
 1°36'.67N, 104°29'.70E
 1°37'.19N, 104°30'.58E
 2°10'.87N, 104°34'.35E
 2°15'.00N, 104°36'.40E
 2°28'.95N, 104°36'.66E
 2°30'.47N, 104°35'.86E
 2°31'.99N, 104°29'.30E
 2°30'.90N, 104°27'.23E
 2°31'.29N, 104°23'.62E
 2°32'.93N, 104°22'.76E
 2°41'.62N, 104°24'.86E
 2°44'.24N, 104°24'.95E
 2°45'.35N, 104°23'.98E
 3°32'.36N, 103°59'.30E
 3°38'.04N, 103°57'.34E
 3°38'.99N, 103°57'.83E
 4°45'.56N, 103°57'.82E
 4°55'.73N, 103°55'.84E
 4°56'.49N, 103°56'.74E

SECTION V
REPRINT OF ADMIRALTY NOTICES TO MARINERS
FOR DUAL BADGED CHART

162(P)/04 SOUTH CHINA SEA – Singapore Strait to Songkhla – Submarine cables. (continue)

4. Segment B (continue)

5°09'.01N, 103°54'.71E

6°00'.02N, 103°24'.66E

6°01'.48N, 103°15'.29E

6°06'.47N, 103°03'.06E

7°08'.32N, 101°15'.77E

7°10'.50N, 101°09'.79E

7°11'.52N, 100°41'.89E

7°10'.94N, 100°37'.03E. (shore)

5. Vessels are requested to avoid anchoring or trawling in the vicinity of the cable route.

6. Charts will be updated, as appropriate, in due course.

Charts affected: 4041- 4042 - 4043

Source: Weekly Edition 2, dated 8 January 2004

HYDROGRAPHIC NOTE

Date

Ref. No

Name of vessel or address of sender:

.....
.....
.....

General locality:

Subject:

Approx. Position: Lat..... Long

Charts affected:.....

Latest Notices to Mariners held

Publications affected (Edition No. and date of latest supplement)

.....
.....

Details:-

.....
.....
.....
.....
.....

Signature of

Observer/Reporter: Ship' s stamp

INSTRUCTION

1. Mariners are requested to notify the Hydrographer, Maritime and Port Authority of Singapore, when new or suspected dangers to navigation are discovered, changes observed in aids to navigation or corrections to nautical publications seem to be necessary.
2. The instructions below should be followed as closely as possible to facilitate easy interpretation of information.
3. A position which is fixed by sextant angles, radar ranges or bearings (true or magnetic) should include more than two objects in order to provide a check on its accuracy. When there is a series of fixes along a ship's track only the method of fixing and the objects used need to be indicated. A position may also be defined by bearing and distance from a conspicuous object eg. beacon, lighthouse etc.
4. A report should include a tracing of the largest scale chart and the details should be marked in red; adequate information must be traced in black ink to enable the amendments to be fitted correctly.
5. The method in which soundings are taken should be stated. In case of echo sounding, the trace should be marked with date, times, depths etc. and forwarded with the report. It is important to state whether the echo sounder is set to register depths below the surface or below the keel; in the latter case the vessel's draught at the time of observation should be given. The make, name and type of set should also be stated.
6. Modern echo sounders frequently register greater depths than the advertised maximum for the set, eg. with a set whose maximum is 500 metres, a trace appearing at 50 metres may in fact be 550 metres or even 1050 metres. Erroneous deep soundings caused by 2nd transmission error can usually be recognised by the following:-
 - (a) the tracing being weaker than normal for the depth registered,
 - (b) the trace appearing to pass through the transmission line,
 - (c) the feathery nature of the trace.
7. Reports which cannot be confirmed or are lacking in certain details should not be withheld. Shortcomings should be stressed and any firm expectation of being able to check the information on a succeeding voyage should be mentioned.
8. Reports of shoal soundings, uncharted dangers and defects in aids to navigation may, at the mariner's discretion, be made by radio to Singapore Port Operations on VHF Channels 12 or 20 or to Hydrographer, Maritime and Port Authority of Singapore, through Singapore Radio, call-sign 9VG, by wireless telegraphy.

Note:-

An acknowledgement of receipt will be sent and the information then used to the best advantage. When a Notice to Mariners is issued the sender's vessel or name is quoted as authority unless the same information is also received in a foreign Notices to Mariners. Further communication should be expected only if the information is of outstanding value or has unusual features.