



SINGAPOREAN NOTICES TO MARINERS

SECTION	CONTENT	Page
I	Index of Charts & Publications	1
II	New Publications	9
	Notices to Mariners and Chart Corrections	11
	Temporary and Preliminary Notices	13
III	Navigational Information	14
	Amendments to Publications	18
IV	Reprint of Radio Navigational Warnings	19
V	Reprint of Admiralty Notices to Mariners for Dual Badged Charts	20

The monthly Notices to Mariners contain corrective information affecting charts published by the Hydrographic Department, Maritime and Port Authority of Singapore. The information contained in these Notices should be updated on the charts affected. Notices under Section II apply only to the particular Singaporean Chart(s) indicated.

Mariners are requested to notify the Chief Hydrographer, Maritime and Port Authority of Singapore, immediately on the discovery of new dangers or suspected dangers to navigation and of changes or defects in aids to navigation. See Hydrographic Note on back page.

The monthly Singaporean Notices to Mariners can be accessed directly from the MPA website:

<http://www.mpa.gov.sg/> > Circulars & Notices > Singaporean NTM

or

<http://www.mpa.gov.sg/infocentre/publications/noticesmari.htm>

This service is offered free of charge.

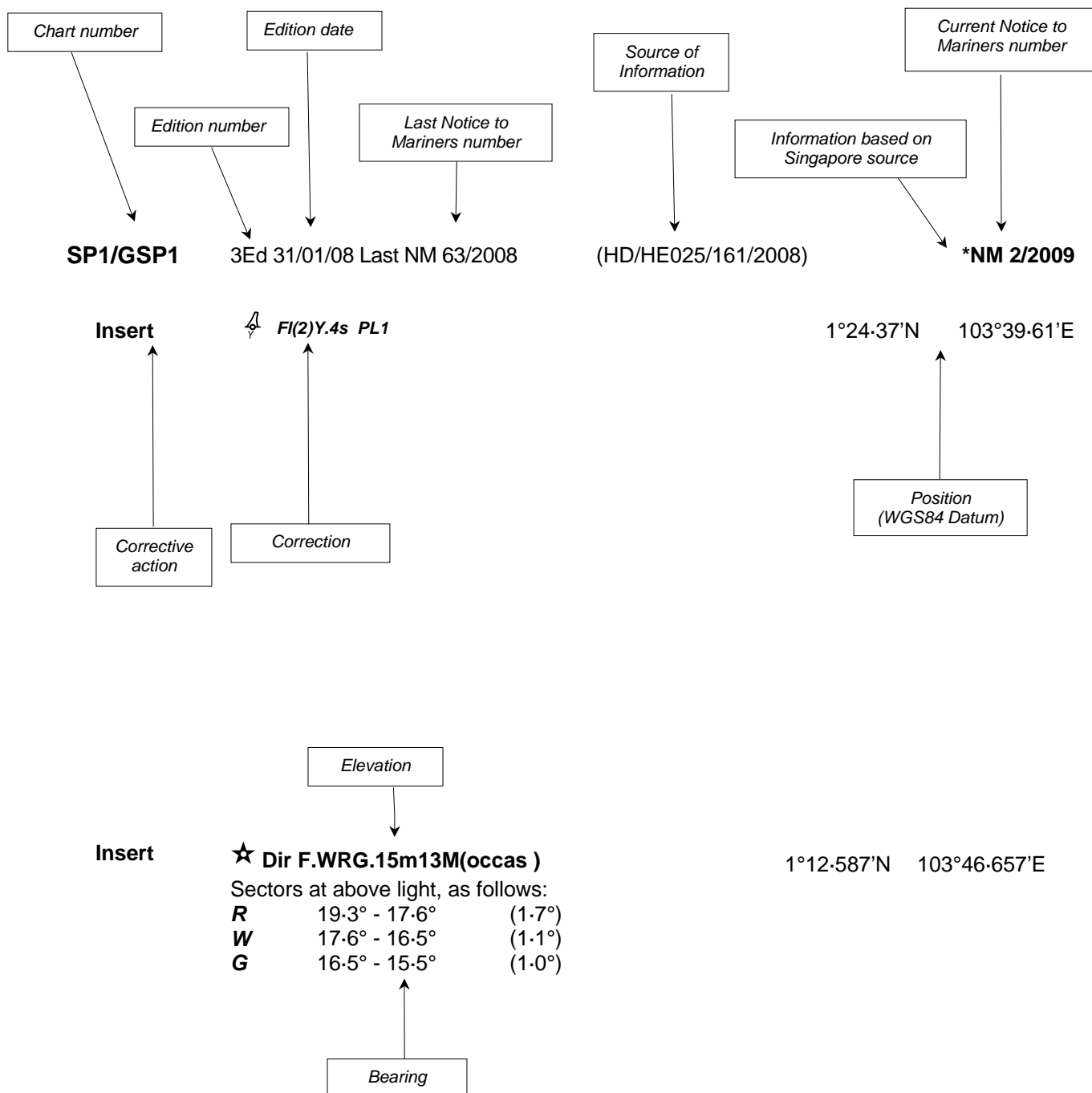
The Chief Hydrographer of
Maritime and Port Authority of Singapore
wishes all users of Singaporean and Dual Badged Charts

A HAPPY LUNAR NEW YEAR
Wishing all a safe voyage in Year 2009

Hydrographic Department
Maritime and Port Authority of Singapore
460 Alexandra Road
PSA Building #20-00
Singapore 119963
Tel: (65) 6375 1227
Fax: (65) 6278 7646

EXPLANATION OF FORMAT

The elements of a typical chart correction are explained below.



Notes:

- a) Notice to Mariners number followed by:
 - T** indicates a Temporary Notice (eg. *NM 80T/2008).
 - P** indicates a Preliminary Notice (eg. *NM 80P/2008).
- b) Bearings are referred to True Compass in degrees clockwise from 000° to 359°. Bearings related to lights are from seaward.
- c) Heights and elevations are above Mean High Water Springs.

I
INDEX OF CHARTS AND PUBLICATIONS

DESCRIPTION	NOTICE NO.	PAGE NO.
Index of Singaporean Charts	-	3
Singaporean Charts Catalogue	-	4
Index of Dual Badged Charts	-	5
Dual Badged Charts Catalogue	-	6
Hydrographic Publications	-	7
Index of Singapore Electronic Navigational Charts (ENC)	-	7
New Publication "SINGAPORE TIDE TABLES 2009"	-	9
New Edition Singaporean Charts	-	10
Numerical Index to Notices to Mariners of 2008	*1	11
Singaporean Chart 200	2, 3, 4	11
Singaporean Chart 202	5, 6	12
Singaporean Chart 501	5, 7	12
Temporary and Preliminary Notices	8T	13
Port Marine Notices	*9	14
Dredging from the Singapore Port Limit and the West Bound Lane of the Traffic Separation Scheme in the Singapore Strait	*10P	15
Straits of Malacca and Singapore Routeing System	*11	16
Singaporean Print on Demand (POD) Charts	*12	17
Reprint of Admiralty Notices to Mariners for Dual Badged Charts	-	20
Singapore Electronic Navigational Charts (ENC) Distributors	-	23

* Denotes information are based on Singapore source.

I

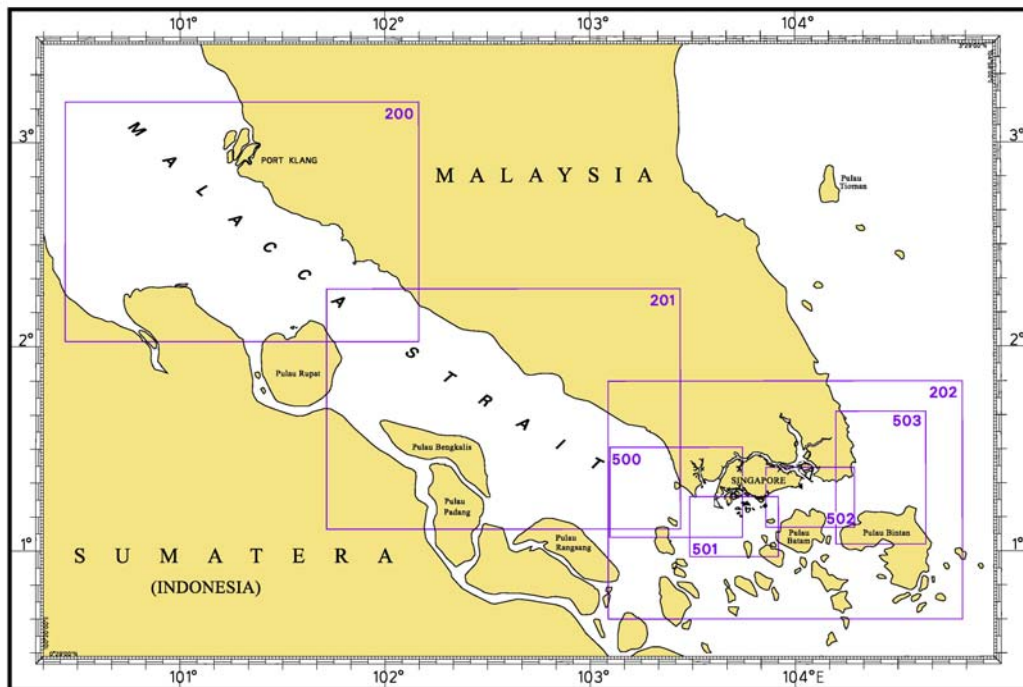
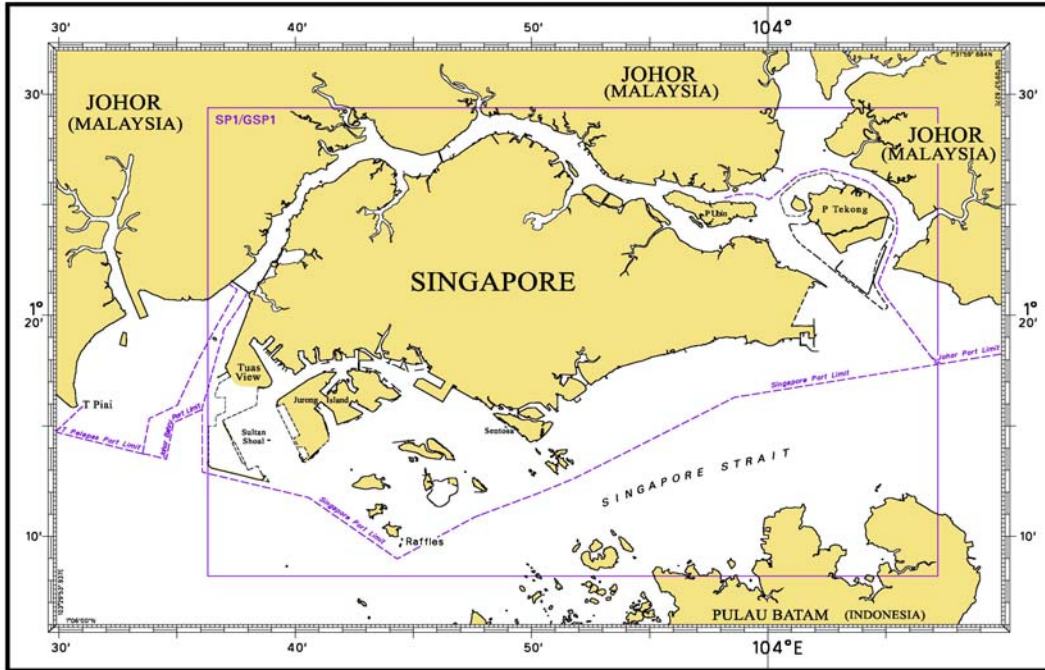
INDEX OF CHARTS AND PUBLICATIONS

NOTICE NO.	DESCRIPTION	PAGE NO.	NOTICE NO.	DESCRIPTION	PAGE NO.
-	Index of Singaporean Charts	3	*11	Straits of Malacca and Singapore Routeing System	16
-	Singaporean Charts Catalogue	4	*12	Singaporean Print on Demand (POD) Charts	17
-	Index of Dual Badged Charts	5	-	Reprint of Admiralty Notices to Mariners for Dual Badged Charts	20
-	Dual Badged Charts Catalogue	6	-	Singapore Electronic Navigational Charts (ENC) Distributors	23
-	Hydrographic Publications	7			
-	Index of Singapore Electronic Navigational Charts (ENC)	7			
-	New Publication "SINGAPORE TIDE TABLES 2009"	9			
-	New Edition Singaporean Charts	10			
*1	Numerical Index to Notices to Mariners of 2008	11			
2	200	11			
3	200	11			
4	200	11			
5	202, 501	12			
6	202	12			
7	501	12			
8T	Temporary and Preliminary Notices	13			
*9	Port Marine Notices	14			
*10P	Dredging from the Singapore Port Limit and the West Bound Lane of the Traffic Separation Scheme in the Singapore Strait	15			

* Denotes information are based on Singapore source.

I INDEX OF CHARTS AND PUBLICATIONS

INDEX OF SINGAPOREAN CHARTS



Notes:

Updated SINGAPOREAN Charts (excluding Charts SP1/GSP1) are available through our Print On Demand (POD) Chart Service. For more information, refer to Section III – Navigational Information and these charts can be purchased from our authorised Chart Agents:

DPM (Singapore) Pte Ltd, E.W. Liner Charts & Publications Pte Ltd and Motion Smith.

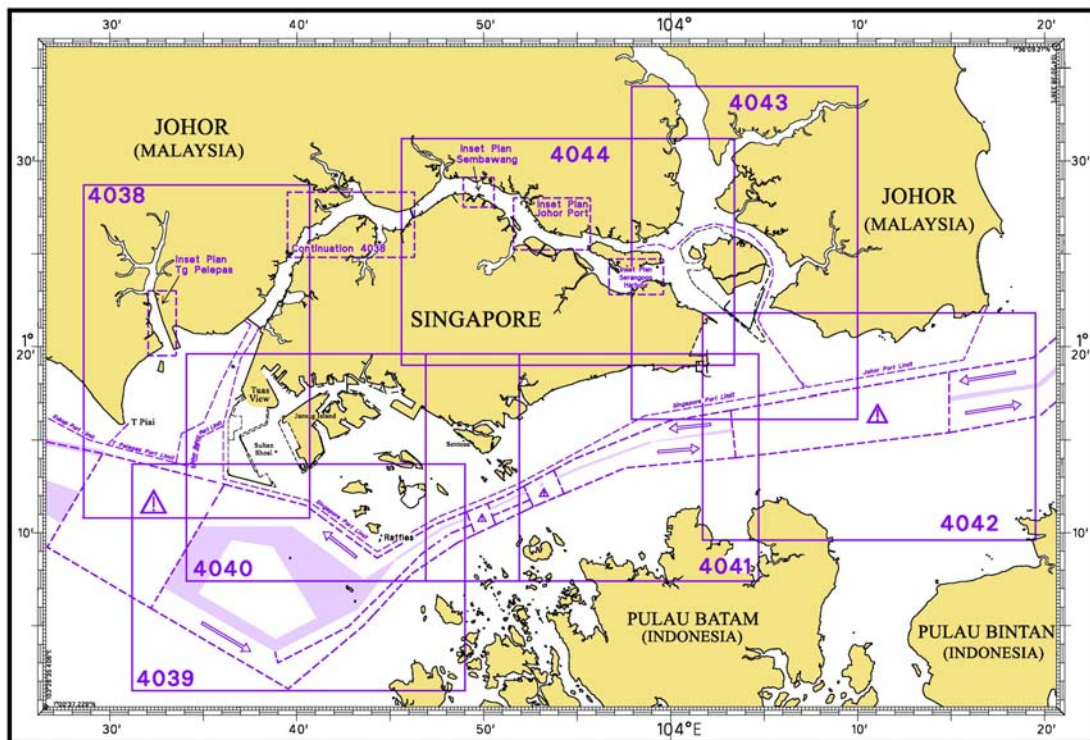
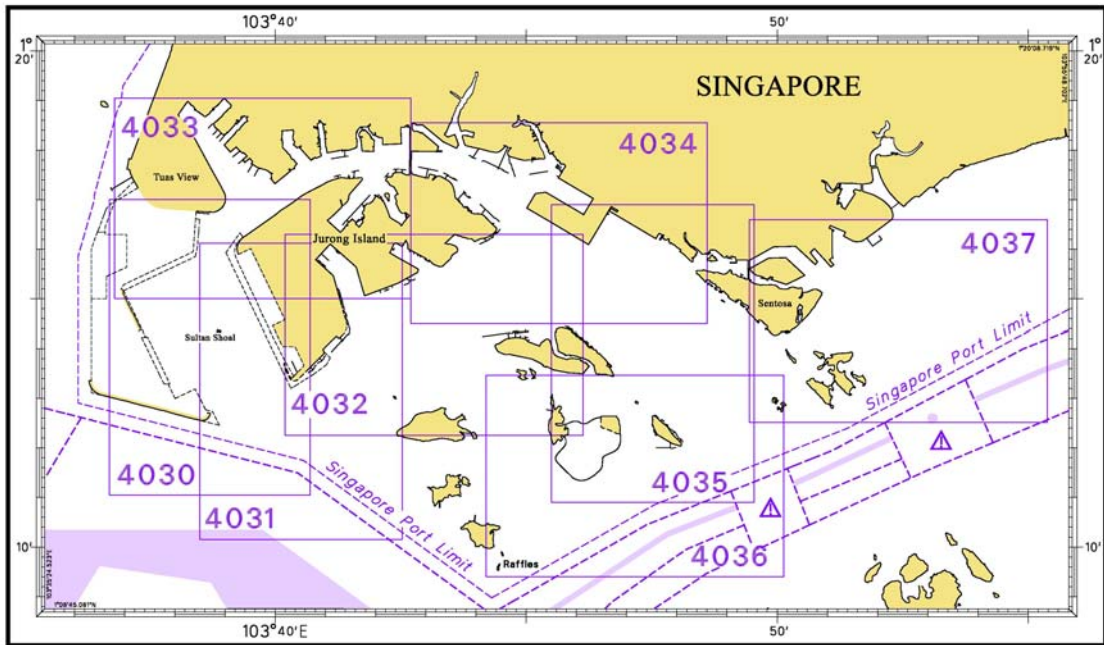
I
INDEX OF CHARTS AND PUBLICATIONS

SINGAPOREAN CHARTS CATALOGUE

Chart No.	Chart Title	Scale 1:	Date Published of Latest Edition
1	Chart 1 – Symbols Abbreviations Terms – Used on Singaporean produced or published Nautical Charts – New Edition July 2001	-	-
Charts for Small Craft	Singapore Strait & Adjacent Waterways	Various	15/01/09
SP1	Anchorage and Aids to Navigation	60 000	15/01/09
GSP1	Anchorage and Aids to Navigation (with Area Reference)	60 000	15/01/09
200	Malacca Strait - Port Klang to Tanjung Keling	200 000	30/11/05
201	Malacca Strait - Tanjung Keling to Western Entrance of Singapore Strait	200 000	05/10/07
202	Singapore Strait	200 000	19/10/06
500	Malacca and Singapore Straits – Pulau Pisang to Raffles Lighthouse	75 000	30/08/07
501	Singapore Strait – Western Part	50 000	21/09/06
502	Singapore Strait - Eastern Part	50 000	25/09/08
503	South China Sea - Eastern Approaches and Entrance to Singapore Strait	75 000	15/09/08

I
INDEX OF CHARTS AND PUBLICATIONS

INDEX OF DUAL BADGED CHARTS



I
INDEX OF CHARTS AND PUBLICATIONS

DUAL BADGED CHARTS CATALOGUE

Chart No.	Chart Title	Scale 1:	Date Published of Latest Edition
4030	Port of Singapore West Jurong Anchorages and Temasek Fairway	10 000	22/05/08
4031	Port of Singapore Western Approaches to Jurong Island	10 000	22/05/08
4032	Port of Singapore Sinki Fairway	10 000	22/05/08
4033	Port of Singapore Tuas Bay, West Jurong Channel and Pesek Basin	10 000	22/05/08
4034	Port of Singapore East Jurong Channel, Pasir Panjang Terminal and West Keppel Fairway	10 000	24/07/08
4035	Port of Singapore Western Anchorages, Jong Fairway and Cruise Bay	10 000	24/07/08
4036	Port of Singapore Raffles Lighthouse to The Sisters	10 000	05/07/07
4037	Port of Singapore Keppel Harbour, Tanjong Pagar Terminal and Approaches	10 000	24/05/07
4038	Johor Strait – Western Part	30 000	17/08/06
4039	Western Approaches to Main Strait	30 000	29/03/07
4040	Singapore, Indonesia and Malaysia Tuas View to Pulau Sakijang Bendera (S. John's Island)	30 000	24/07/08
4041	Singapore and Indonesia Pulau Sebarok to Changi	30 000	24/07/08

I INDEX OF CHARTS AND PUBLICATIONS

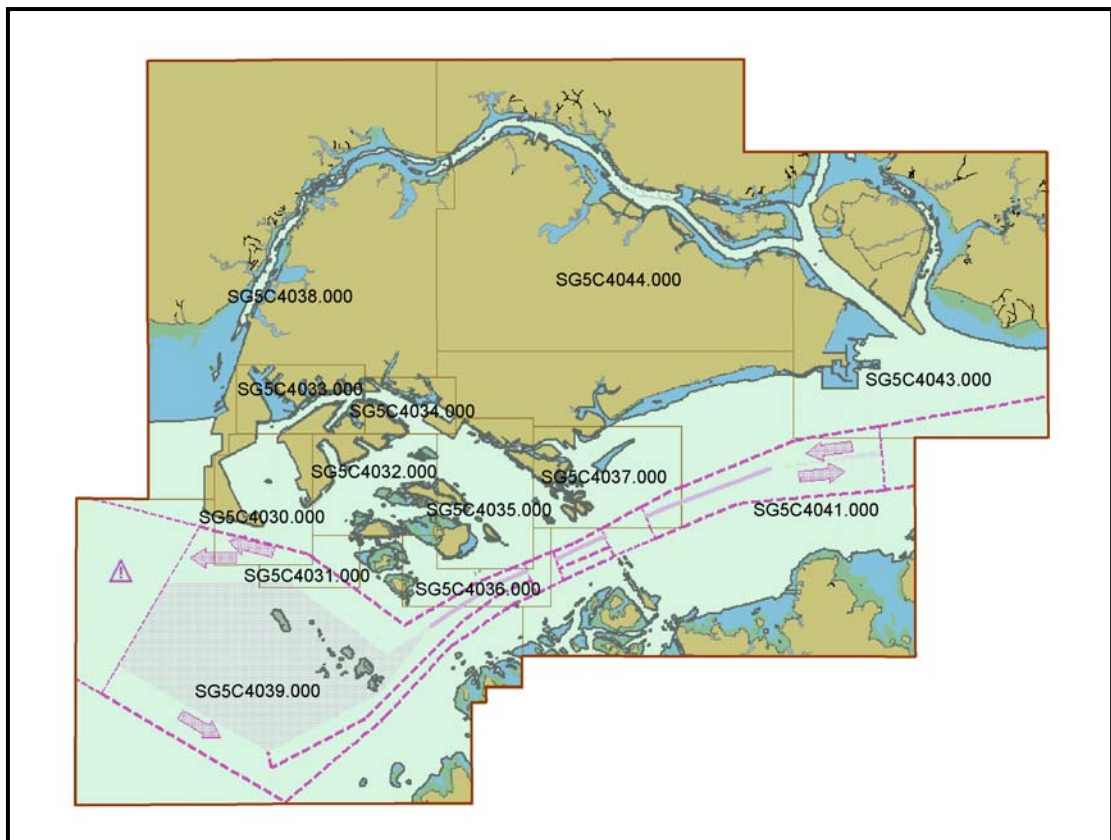
DUAL BADGED CHARTS CATALOGUE

4042	Indonesia, Malaysia and Singapore, Changi to Pulau Mungging and Tanjung Buntan to Tanjung Tondang	30 000	24/07/08
4043	Kuala Johor and Sungai Johor	30 000	05/07/07
4044	Johor Strait - Eastern Part	30 000	22/02/07

HYDROGRAPHIC PUBLICATIONS

Item	Title
1	Year 2009 Singapore Tide Tables
2	Singapore Port Information 2008/2009 Edition

INDEX OF SINGAPORE ELECTRONIC NAVIGATIONAL CHARTS (ENC)



I
INDEX OF CHARTS AND PUBLICATIONS

INDEX OF SINGAPORE ENC 2009

Cells Name	Cell Descriptions	Latitude	Longitude
SG5C4030.000	West Jurong Anchorages Temasek Fairway	1°11.050'N 1°16.300'N	103°36.700'E 103°40.640'E
SG5C4031.000	Western Approaches to Jurong Island	1°10.150'N 1°12.250'N	103°38.500'E 103°42.530'E
SG5C4032.000	Sinki Fairway	1°12.250'N 1°16.300'N	103°40.640'E 103°45.580'E
SG5C4033.000	Tuas Bay, West Jurong Channel and Pesek Basin	1°16.300'N 1°19.050'N	103°37.600'E 103°42.700'E
SG5C4034.000	East Jurong Channel, Pasir Panjang Terminal and West Keppel Fairway	1°16.300'N 1°18.550'N	103°42.700'E 103°46.356'E
SG5C4035.000	Western Anchorages, Jong Fairway and Cruise Bay	1°10.900'N 1°16.900'N	103°45.580'E 103°49.425'E
SG5C4036.000	Raffles Lighthouse to The Sisters	1°09.400'N 1°12.520'N	103°44.200'E 103°50.130'E
SG5C4037.000	Keppel Harbour, Tanjong Pagar Terminal and Approaches	1°12.520'N 1°16.590'N	103°49.425'E 103°55.340'E
SG5C4038.000	Johor Strait – Western Part	1°13.700'N 1°31.200'N	103°34.100'E 103°46.300'E
SG5C4039.000	Western Approaches to Main Strait	1°01.500'N 1°13.700'N	103°31.200'E 103°49.000'E
SG5C4041.000	Pulau Sebarok to Changi	1°07.400'N 1°19.600'N	103°45.600'E 103°04.700'E
SG5C4043.000	Kuala Johor and Sungai Johor	1°16.100'N 1°27.500'N	103°59.800'E 104°10.000'E
SG5C4044.000	Johor Strait – Eastern Part	1°19.600'N 1°31.200'N	103°45.600'E 103°59.800'E

II NEW PUBLICATIONS



SINGAPORE TIDE TABLES YEAR 2009 PUBLISHED ON 22 SEPTEMBER 2008

Summary of Publication

- (a) This 239 page book contains the following information:
The predictions consist of 5 main segments to facilitate easy reference:
- High and Low Water Predictions
 - Hourly Tidal Height Predictions
 - Hourly Tidal Stream Predictions
 - Maximum and Slack Tidal Stream Predictions
 - Malacca Strait – High and Low Water Predictions
- The predictions cover stations in Singapore and selected stations along the Malacca Strait.
- (b) As in earlier publications, the presentation of the predictions is enhanced with colour codes so as to differentiate the various states of tidal heights, eg falling or rising tide and tidal stream directions. Moon phases, eg full and new moon, are also included in each calendar month to complement the prediction values.
- (c) The tidal heights are given in metres above Chart Datum (CD). The CD is the datum of soundings shown on the Singaporean Charts and Dual Badged Charts covering the area. A table showing the various tidal levels eg. Mean High Water Springs, Mean Low Water Springs etc, at various stations with reference to CD is also included in this publication.

To Whom Will It Be Useful?

Mariners, shipping community, port users and other interested users.

Frequency of Publication

Annually.

Cost of Publication

To be advised by Chart Agents.

Order Enquires:

This publication is available from the following Chart Agents:

- 1) DPM (Singapore) Pte Ltd
 - 2) E.W. Liner Charts & Publications Pte Ltd
 - 3) Motion Smith
- (Please refer to Page 24 for details.)
-

II NEW PUBLICATIONS

NEW EDITION SINGAPOREAN CHARTS TO BE PUBLISHED ON 15 JANUARY 2009

Chart Number : SP1
 Title : Anchorages and Aids to Navigation
 Coverage : Lat 1° 08.20' N 1° 29.40' N
 Long 103° 35.70' E 104° 07.20' E
 Scale : 1 : 60 000
 Date Published : 15 January 2009
 Size of Chart : 973.9 X 651.2mm
 Remarks : This new edition includes revised anchorages, new topography,
 submarine cables, aids to navigation and depth contours covering
 the entire chart.
 This new edition supersedes the earlier edition published on
 31 January 2008.

Chart Number : GSP1
 Title : Anchorages and Aids to Navigation (with area reference)
 Coverage : Lat 1° 08.20' N 1° 29.40' N
 Long 103° 35.70' E 104° 07.20' E
 Scale : 1 : 60 000
 Date Published : 15 January 2009
 Size of Chart : 973.9 X 651.2mm
 Remarks : This new edition includes revised anchorages, new topography,
 submarine cables, aids to navigation and depth contours covering
 the entire chart.
 This new edition supersedes the earlier edition published on
 31 January 2008.


NEW EDITION CHART TO BE PUBLISHED ON 15 JANUARY 2009

Chart Number : CHARTS FOR SMALL CRAFT
 Title : Singapore Strait and Adjacent Waterways – 2009/2010 Edition
 Date Published : 15 January 2009
 Size of chart : 600 x 400 mm
 Remarks : The publication contains 19 Small Craft Charts and related nautical
 information bound into an atlas measuring 600 x 400 mm. The
 pages are laminated to prevent damage from seawater.
 The symbols, abbreviations and term depicted on these charts are
 consistent with the International Hydrographic Organization Chart
 Standards and Specifications.
 Symbols for the locations of pleasure craft facilities and areas for
 sea sport activities such as board sailing, dinghy sailing, keelboat
 sailing, power-boating and water-skiing are also included and
 highlighted in red.
 Chart of the same publication Edition 2007 published on 31 January
 2007 would be superseded.








II
NOTICES TO MARINERS AND CHART CORRECTIONS

***(NM 1/2009) NUMERICAL INDEX TO NOTICES TO MARINERS OF 2008 (1 TO 158)**

CHART NO.	PUBLISHED	YEAR	NOTICES NO.
SP1, GSP1	3 Ed 31/01/08	2008	27-28-29-30-31-38-39-40-41-42-43-44-45-55-56-57-58-59-60-61-62-63-70-71-72-73-74-89-90-91-92-93-94-95-96-97-98-99-100-107-108-121-122-123-124-131-132-141-142-152
200	2Ed 30/11/05	2008	10-11-12-46-75-109-125-126
201	3Ed 05/10/07	2008	11-32-47-76-84-101-110-111-143-144-145-146-153-154
202	5Ed 19/10/06	2008	13-14-43-44-48-49-58-64-77-102-110-112-121-127-133-155
500	5Ed 30/08/07	2008	14-30-31-49-50-64-95-107-108-110-113-131-133
501	4Ed 21/09/06	2008	14-15-30-31-43-50-65-74-95-102-107-108-110-113-114-121-131-133-134-141
502	4Ed 25/09/08	2008	Nil
503	3Ed 25/09/08	2008	Nil

200	2Ed 30/11/05 Last 126/2008	(Royal Malaysian Navy Notices 10/194/08)	NM 2/2009
Insert		2°52-89'N	101°11-71'E
		(Royal Malaysian Navy Notices 10/195/08)	NM 3/2009
Amend	3 CHIMNEYS for 2 CHIMNEYS	3°07-43'N	101°18-90'E
		(Admiralty Notices 50/6755/2008)	NM 4/2009
Insert	depth 9₅ enclosed by 10m contour	2°51-21'N	101°15-46'E
	depth 19₄ enclosed by 20m contour	2°50-17'N	101°14-27'E
Insert	depth 22	2°49-87'N	101°14-93'E
	depth 21	2°48-93'N	101°14-56'E
	depth 17₄ enclosed by 20m contour	2°48-78'N	101°15-54'E
Delete	depth 21	2°48-44'N	101°15-33'E

II
NOTICES TO MARINERS AND CHART CORRECTIONS

202	5Ed 19/10/06 Last 155/2008	(Admiralty Notices 52/7070/2008)	NM 5/2009
Substitute	 Fl. Y. 4s for  Fl. Y. 3s	1°00-20'N	103°30-30'E
		(Admiralty Notices 52/7072/2008)	NM 6/2009
Insert		0°54-54'N	104°23-73'E
<hr/>			
501	4Ed 21/09/06 Last 141/2008	(Admiralty Notices 52/7070/2008)	NM 5/2009
Substitute	 Fl. Y. 4s for  Fl. Y. 3s5M	1°00-20'N	103°30-30'E
		(Admiralty Notices 52/7073/2008)	NM 7/2009
Substitute	 for  PA	1°08-40'N	103°54-71'E
<hr/>			

II
TEMPORARY AND PRELIMINARY NOTICES

(NM 8T/2009) South China Sea – Malaysia – East Coast – Submarine Cable.

Source : Peninsular Malaysia Marine Department No. 73/2008.

1. Recent reports has revealed that submarine cable network of Asia Pacific Cable Network (APCN), APCN2 and Batam Rengit Cable System (BRCS) were damaged due to ship's anchor.
2. Mariners are advised to exercise caution and vessels are requested to avoid anchoring or trawling within an area bounded by the following coordinates :
 - A. Lat 01° 18-41' N, Long 104° 13-46' E.
 - B. Lat 01° 19-40' N, Long 104° 19-39' E.
 - C. Lat 01° 19-89' N, Long 104° 19-92' E.
 - D. Lat 01° 20-58' N, Long 104° 19-32' E.
 - E. Lat 01° 19-97' N, Long 104° 15-99' E.
 - F. Lat 01° 19-26' N, Long 104° 15-68' E.
 - G. Lat 01° 18-85' N, Long 104° 13-32' E

Charts affected : 202, 502, 503

III NAVIGATIONAL INFORMATION

*(NM 9/2009) PORT MARINE NOTICES

The following PMNs have been shortlisted, as they would be of particular interest to mariners.

These notices can be accessed directly from MPA website:

http://www.mpa.gov.sg/circulars_and_notices/portmarine_notices/pm_notices.htm

PMN No.	Subject
120/2008	Reclamation of Jurong Island Phase 4.
121/2008	Reclamation work at Tuas View extension.
124/2008	Marine jetty (MJ10) construction works at Oiltanking ODFJELL, Jurong Island.
144/2008	A) Maintenance dredging works at Tanjong Pagar, Keppel and Brani Terminals. B) Upgrading of Berth K12 at Keppel Terminal. C) Demolition of existing concrete ramp at Berth T03 Tanjong Pagar Terminal.
157/2008	High Spot removal within Selat Damar Laut Basin near the completed Berth J12 and J25 extension.
159/2008	Slope protection works on (A) St John's Island (B) Kusu Island.
162/2008	Marine jetty construction works at Pulau Ular.
168/2008	Reclamation of Jurong Island Phase 4 and Tuas View Extension.
170/2008	Sand Mining at Changi East.
171/2008	Reclamation works in Ayer Merbau Basin.
177/2008	Reclamation at Pasir Panjang Terminal and Pasir Panjang Wharves.
181/2008	Dredging and construction of berths (P13 to P18) and stacking/storage yards at Pasir Panjang Terminal.
186/2008	Sand mining at Area 1 and dumping at (i) Jurong Island LNG Project and (ii) Pasir Panjang Terminal project working areas.
188/2008	Construction of a new bridge from Pulau Brani to Sentosa.
189/2008	Widening of existing causeway and causeway extension works.
190/2008	Marine jetty construction works at Tuas Basin (Keppel Tuas Yard).
196/2008	Temporary Staging Ground at Sentosa.
199/2008	Reclamation at Pulau Tekong.
204/2008	Dredging works from Jurong Island to Pulau Ular.
205/2008	Installation of navigational and mooring buoys off Sentosa.
207/2008	Dredging works in East Keppel Fairway and its vicinity.
209/2008	Underwater drilling and blasting at Selat Pandan.

III NAVIGATIONAL INFORMATION

- 213/2008 Jetty repair works at Pulau Brani.
- 217/2008 Reclamation at Pasir Panjang Terminal and Pasir Panjang Wharves.

***(NM 10P/2009) DREDGING FROM THE SINGAPORE PORT LIMIT AND THE WEST BOUND LANE OF THE TRAFFIC SEPARATION SCHEME IN THE SINGAPORE STRAIT**

Purpose

Mariners navigating in the Singapore Strait are hereby informed that dredging operations will be carried out from the Singapore Port Limit and the westbound lane of the Traffic Separation Scheme.

Date

With effect from 17 Dec 2007 until 17 Dec 2011 (48 months).

Duration

24 hours a day, seven days a week with effect from 10 April 2008. On going dredging works will be carried out during daylight hours prior to 10 April 2008.

Working Area

Within an area bounded by the following coordinates from Singapore Port Limit and the area within the westbound lane of the Traffic Separation Scheme (please see chart attached):

WGS 84 Datum		
Points	Lat. (N)	Long. (E)
1	1°15.827'	103°57.737'
2	1°14.865'	103°58.134'
3	1°13.298'	103°54.401'
4	1°13.884'	103°54.131'

Vessels

Vessels involved in the operations will display the appropriate day and night signals and will stand by on VHF Ch 14 and 12 and shall follow any traffic information given by Vessel Traffic Service of Singapore (VTIS).

Navigational Broadcast

Navigational warning broadcast will be promulgated by (VTIS) on VHF CH 09 and NAVTEX to inform vessels of the dredging operation. Mariners are to maintain a listening watch for the above safety information.

Caution

Mariners are advised to:

- (a) Navigate with caution and proceed at a safe speed when approaching the area; and
- (b) Keep well clear of the working vessels.

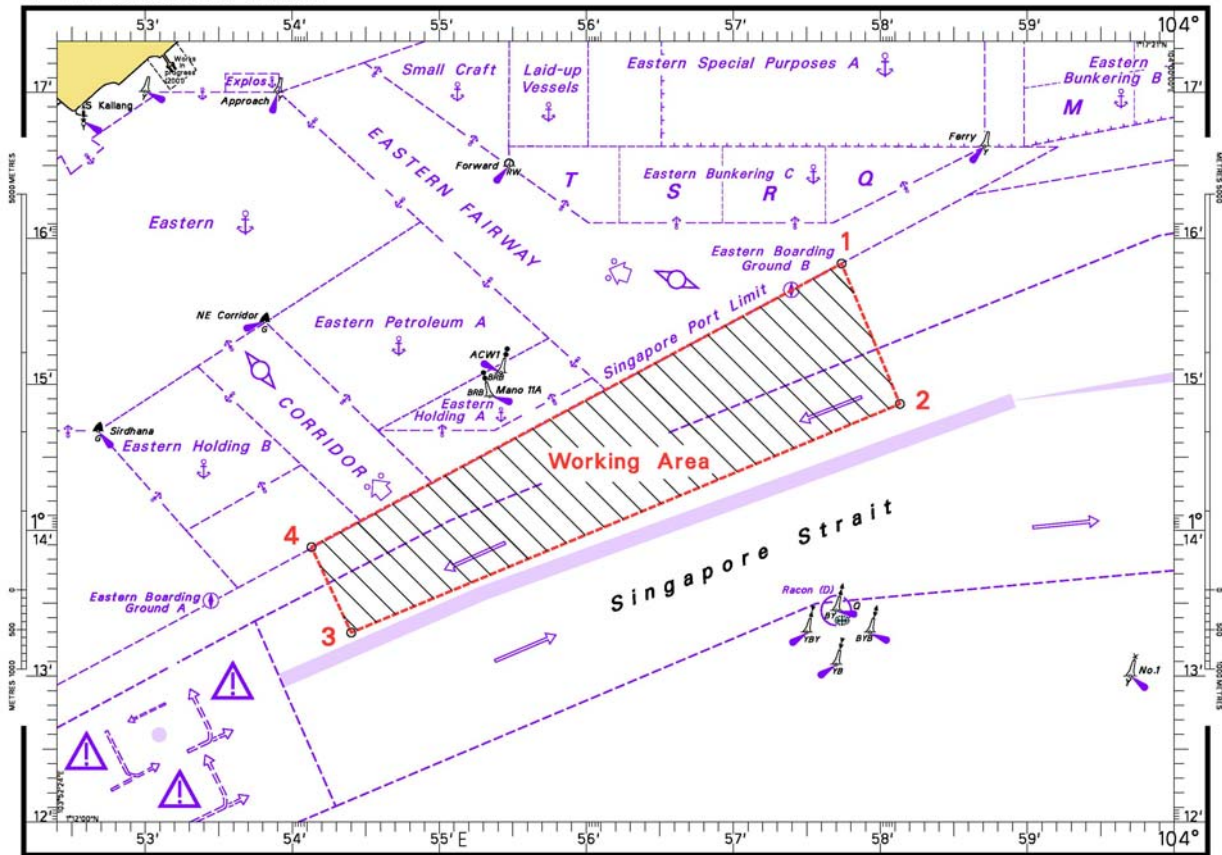
Charts affected: SP1/GSP1, 202, 501, 502, 4037 & 4041

Source: HD/DB67/010/2008

(This is a repetition of Notice No.* 67P/2008)

III NAVIGATIONAL INFORMATION

DREDGING FROM THE SINGAPORE PORT LIMIT AND THE WEST BOUND LANE OF THE TSS IN THE SINGAPORE STRAIT



*(NM 11/2009)

STRAITS OF MALACCA AND SINGAPORE ROUTING SYSTEM

Information concerning schemes shown on Singaporean charts.
(Former NM 1/23/2008) is cancelled)

1. The information concerning the Straits of Malacca and Singapore Routing System are charted in the Singaporean Charts 200, 201, 202, 500, 501, 502, 503 and Dual Badged Charts 4038, 4039, 4040, 4041, 4042 and 4043. All positions are referred to World Geodetic System 84 (WGS 84) datum.
2. The description of the Traffic Separation Scheme and the rules for vessels navigating through the Straits of Malacca and Singapore are published in the Singapore Port Information, 2008/2009 Edition.

III NAVIGATIONAL INFORMATION

*(NM 12/2009)

SINGAPOREAN PRINT ON DEMAND (POD) CHARTS

Print On Demand (POD) Charts are the most up-to-date paper nautical charts printed for navigational use. These nautical charts are produced in accordance with the International Hydrographic Organisation (IHO) charting specifications. These official nautical charts are continually updated to the latest Notices to Mariners before they are printed and sold to users.

These POD Charts include 200, 201, 202, 500, 501, 502, 503.

BENEFITS TO OUR CUSTOMERS

Convenience

Customers need not make numerous hand corrections to the nautical charts before use. In addition the updated POD Charts are more accurate and reliable than offset printed charts with hand corrections.

Clarity

Clarity in the presentation of updated information as compared to lithographic printed charts, where in some cases there are several overlapping corrections over existing information.

Coverage

The POD Charts cover the Malacca and Singapore Straits, from One Fathom Bank to Horsburgh Lighthouse.

**III
AMENDMENTS TO PUBLICATIONS**

Nil

IV
REPRINT OF RADIO NAVIGATIONAL WARNINGS

TT173

VSLs IN EAST JOHOR STRAIT ADVISED TO NAVIGATE WITH CAUTION WHEN NEAR THE PROJECT AREAS OFF PU. TEKONG, PU. SERANGOON, CHANGI AND MALANG PAPAN AS SHALLOW WATER AREAS EXIST. VSLs ADVISED TO KEEP LOOKOUT FOR TUGS AND BARGES NAVIGATING NEAR THE PROJECT AREAS AND PASSENGER FERRIES CROSSING BETWEEN CHANGI AND PULAU TEKONG AND VICINITY OF PASIR GUDANG

ISSUED BY SINGAPORE PORT OPERATION CONTROL CENTRE
(as at 7 December 2008 1300hrs)

V
**REPRINT OF ADMIRALTY NOTICES TO MARINERS
 FOR DUAL BADGED CHARTS**

These notices can be accessed directly from UKHO Website:

<http://www.ukho.gov.uk/amd/weeklyNms.asp>

6641* MALAYSIA – Peninsula Malaysia, West Coast – Johor – Sungai Lebam – T. Serindet Northwards – Reported anchorage.

Source: Malaysia Chart 6134

Chart 4043 [*previous update 6210/08*] WGS84 DATUM

Delete  1° 31'.36N., 104° 06'.05E.

6698* MALAYSIA – Pulau Sebarok North-eastwards – Depth. Wrecks.

Source: Maritime and Port Authority of Singapore

Chart 4036 [*previous update 6017/08*] WGS84 DATUM

Substitute depth **27₄** for **26₆** Wks and associated danger line 1° 13'.062N., 103° 48'.557E.

6699* SINGAPORE – Keppel Harbour – Brani Terminal – Dredged depths.

Source: Maritime and Port Authority of Singapore

Chart 4037 [*previous update 5962/08*] WGS84 DATUM

Amend dredged depth to, **12.0m (2008)**, centred on: 1° 15'.726N., 103° 49'.642E.
 1° 15'.662N., 103° 49'.531E.

6700* SINGAPORE – Main Strait – Pulau Sebarok Southwards – Obstruction. Depth.

Source: Maritime and Port Authority of Singapore

Chart 4035 [*previous update 6018/08*] WGS84 DATUM

Insert  **Obstn** 1° 11'.123N., 103° 47'.648E.

Chart 4036 [*previous update 6698/08*] WGS84 DATUM

Insert  **Obstn** (a) 1° 11'.123N., 103° 47'.648E.

Delete depth **15₉**, close E of: (a) above

Chart 4039 [*previous update 6017/08*] WGS84 DATUM

Insert  **Obstn** (a) 1° 11'.12N., 103° 47'.67E.

Delete depth **15₉**, close E of: (a) above

V
**REPRINT OF ADMIRALTY NOTICES TO MARINERS
 FOR DUAL BADGED CHARTS**

Chart 4040 [*previous update 6018/08*] WGS84 DATUM

Insert  **Obstn** 1° 11'.12N., 103° 47'.67E.

Chart 4041 [*previous update 6018/08*] WGS84 DATUM

Insert  **Obstn** 1° 11'.12N., 103° 47'.67E.

6701* SINGAPORE – Jurong Terminal – Dredged depths. Berths. Light-beacon. Buoyage. Depths. Coastline. Works.

Light List Vol. F, 2008/09, 1701.5

Source: Maritime and Port Authority of Singapore

Chart 4034 [*previous update 5957/08*] WGS84 DATUM

Insert the accompany block, showing new dredged depths, berths, light-beacon and amendments to buoyage, depths, coastline and works, centred on: 1° 18'.214N., 103° 43'.387E.

7073* INDONESIA – Sumatera – Pulau Belakngpadang Eastwards – Wreck.

Source: Malacca and Singapore Strait ENC Technical Working Group

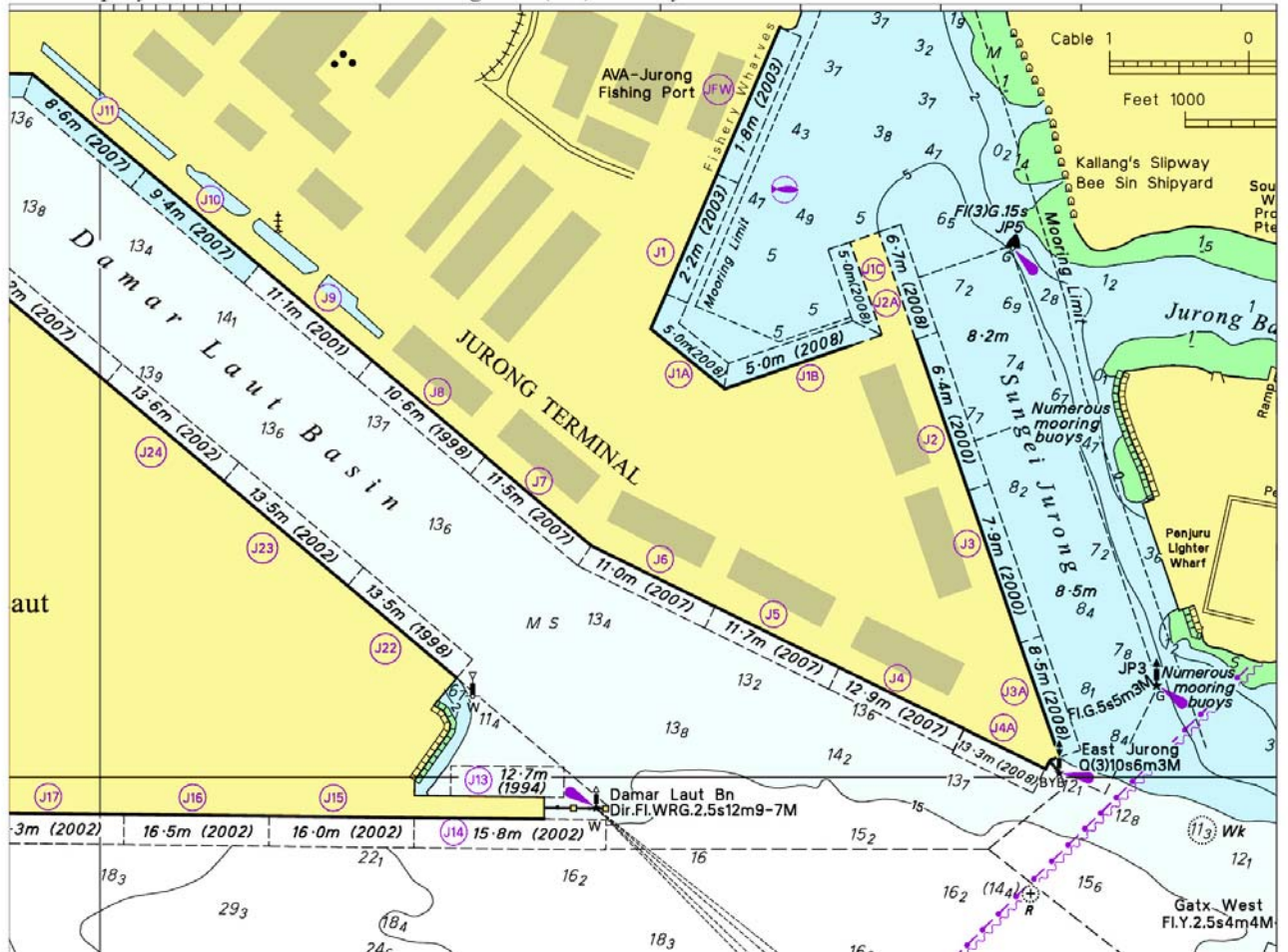
Chart 4041 [*previous update 6700/08*] WGS84 DATUM

Substitute  for  **PA** 1° 08'.40N., 103° 54'.71E.

Updated to Admiralty Notices to Mariners Edition No. 52 of 2008 dated 25 December 2008.

V
REPRINT OF ADMIRALTY NOTICES TO MARINERS
FOR DUAL BADGED CHARTS

To accompany Notice to Mariners 6701/08. Image Size (mm) 125.7 by 167.8



SINGAPORE ELECTRONIC NAVIGATIONAL CHARTS (ENC) DISTRIBUTORS
Please approach any of the appointed distributors to purchase the Singapore ENC.

CONTACT PERSON/ DESIGNATION	ADDRESS	TELEPHONE/FAX NO./EMAIL/WEBSITE
Mr Chong Chee Meng General Manager	DPM (Singapore) Pte Ltd 1 Maritime Square, #09-72 Harbour Front Centre, Singapore 099253	Tel. No.: +65 6270 4060 Fax No.: +65 6276 3858 Email: sales@dpmsingapore.com.sg Website: http://www.dpmsingapore.com.sg
Mr Hamzah Akhbar MDS Branch Manager	Kelvin Hughes(S) Pte Ltd 8 Pandan Avenue #02-00, Singapore 609384	Tel. No.: +65 6545 9880 ext.24 Fax No.: +65 6545 8892 Email: hamzah.akhbar@khsing.com Website: http://www.kelvinhughes.co.uk
Mr Looi Keen Wai Regional Sales Manager	Maritime Information Systems (MARIS) 52, Telok Blangah Road #01-06, Telok Blangah Centre, Singapore 058809	Tel. No.: +65 6276 1472 Fax No.: +65 6276 1473 Email: support@maris.sg Website: http://www.maris.no
Ms Kathrine Bjaroy Marketing Coordinator	Maritime Information System AS (MARIS) Danholmen 25, 3128 Notteroy, Norway	Tel. No.: +47 33 30 42 50 Fax No.: +47 33 30 42 51 Email: roar.moe@maris.no Website: http://www.maris.no
Mr Bernard Wong Sales Manager	Motion Smith 15 Jalan Kilang Barat #08-01/05 Frontech Centre Singapore 159357	Tel. No.: +65 6220 5098 Fax No.: +65 6225 4902 Email: sales@motsmith.com Website: http://www.motsmith.com
Mr Dominic Oliver	Transas Marine Pacific Pte Ltd 750C Chai Chee Road, #04-07, Technopark@Chai Chee, Singapore 469003	Tel. No.: +65 6443 3061 Fax No.: +65 6443 3025 Email: dominic@transas.com.sg Website: http://www.transas.com.sg
Mr Choy Kum Weng Director	Vector Services Pte Ltd 15 West Coast Highway, #02-14A Pasir Panjang Building Singapore 117861	Tel. No.: +65 6777 3602 Fax No.: +65 6777 9203 Email: kwchoy@pacific.net.sg
Mr George Arts President	Marine Press of Canada 640 Rue St-Paul Ouest, Suite 300 Montreal (QC) Canada, H3C1L9	Tel. No.: (514) 866-8342 Fax No.: (514) 866-9050 Email : sales@marinepress.com Website: http://www.marinepress.com
Mr Thomas Wilde Superintendent	HanseNautic GmbH Bade & Hornig, Eckardt & Messtorff Herrengaben 31 D-20459 Hamburg, Germany	Tel. No.: +49 40 374 811-32 Fax No.: +49 40 366 400 Email: wilde@hansenautic.de Website : http://www.HanseNautic.com
Ms Verena Borsos Manager	SevenCs AG + Co. KG Ruhrstrasse 90, D-22761 Hamburg, Germany	Tel. No.: +49 40 853 58 6940 Fax No.: +49 40 853 58 6949 Email: sales@chartworld.com Website : http://www.sevencs.com
Mr Keiji Shimizu General Manager	Japan Hydrographic Association Electronic Charts Division Daiichi Sogo Bldg, 6F 1-6-6, Hanedakuko, Ota-ku, Tokyo 144-0041, Japan	Tel. No.: +81 3 5708 7093 Fax No.: +81 3 5708 7094 Email: enc-support@jha.jp Website: http://www.jha.jp

SINGAPORE ELECTRONIC NAVIGATIONAL CHARTS (ENC) DISTRIBUTORS
Please approach any of the appointed distributors to purchase the Singapore ENC.

CONTACT PERSON/ DESIGNATION	ADDRESS	TELEPHONE/FAX NO./EMAIL/WEBSITE
Mr Jester-Kim Foreign Business Department Manager	E_MLX Co. Ltd Ssangyong Research No.2 Lab Sinseong-Dong 100 Yusong-Gu, Daejoen 305-804, Korea (ROK)	Tel. No.: +82 42 865 1893 Fax No.: +82 42 865 1884 Email: Jester-kim@emlx.co.kr
Mr C G Kim Managing Director	Korean Ocean Development Co. Ltd 2ND Fl, Dongbang Bldg, 25-4, 4 Ga Jungang-Dong, Jung-Gu, Busan, South Korea	Tel. No.: +82 514 66 0760 Fax No.: +82 514 65 9345 Email: sales@chartkorea.com Website: http://www.chartkorea.com
Mr Kjell Nodland	Jeppesen Norway A/S P.O Box 212 , N-4379 Egersund, Norway	Tel No.: +47 514 64 700 Fax No: +47 514 64 701 Email: enc@c-map.no Website : http://www.c-map.no
Ms Eva Hegland Sales, order and distributor support.	PRIMAR STAVANGER Lervigsveien 36, P.O Box 60, N-4001 Stavanger, Norway	Tel. No.: +47 51 93 9500 Fax No.: +47 51 93 9501 Email: sales@primar.org Website : http://www.primar-stavanger.org
Mrs Christine Trickett Product Manager	United Kingdom Hydrographic Office Admiralty Way, Taunton, Somerset TA1 2DN United Kingdom	Tel. No.: +44 (0)1823 337900 Fax No.: +44 (0)1823 284077 Emails: vargroup@ukho.gov.uk & christine.trickett@ukho.gov.uk Website: http://www.ukho.gov.uk

Agents for the Maritime and Port Authority of Singapore Publications

Agent's name : **DPM (Singapore) Pte Ltd**
Address : 1 Maritime Square #09-72, HarbourFront Centre,
Singapore 099253
Telephone : (65) 6270 4060
Fax No. : (65) 6276 3858
E-mail : sales@dpmsingapore.com.sg
Internet Web Site : <http://www.dpmsingapore.com.sg>

Agent's name : **E.W. Liner Charts & Publications Pte Ltd**
Address : 102F, Pasir Panjang Road, #08-01, Citilink Warehouse Complex,
Singapore 118530
Telephone : (65) 6323 0773
Fax No. : (65) 6323 0775
E-mail : ewliner@singnet.com.sg
Internet Web Site : <http://www.ewliner.com>

Agent's name : **Motion Smith**
Address : 15 Jalan Kilang Barat
#08-01/05 Frontech Centre,
Singapore 159357
Telephone : (65) 6220 5098
: (After office hours: 8163 9993)
Fax No. : (65) 6225 4902
E-mail : sales@motsmith.com
Internet Web Site : <http://www.motsmith.com>

HYDROGRAPHIC NOTE - Instructions

1. Mariners are requested to notify the Chief Hydrographer, Maritime and Port Authority of Singapore, when new or suspected dangers to navigation are discovered, changes are observed in aids to navigation or where corrections to nautical publications may be necessary. Reports, which cannot be confirmed or are lacking in certain details should not be withheld.
2. Any ambiguities of time, positioning and depth should be stressed and any firm expectation of being able to check the information provided on a following voyage should be mentioned.
3. Mariners using satellite position fixing systems, eg. GPS, should provide details of equipment and datum used (where applicable). Where bearings (true or magnetic) are taken visually or by radar to fix a position, it should include more than two objects in order to provide a check on its accuracy. A position may also be defined by bearing and distance from a conspicuous object eg. beacon, lighthouse etc.
4. The note should include a tracing or a digital image of the chart used and the details should be clearly marked.
5. Echo sounders frequently register greater depths than the advertised maximum depth for the equipment, eg. a trace appearing at 50 metres may be in fact be 550 metres or even 1050 metres for equipment whose maximum depth is 500 metres. Erroneous depths caused by 2nd transmission error can usually be recognised by the following:
 - (a) the tracing being weaker than normal for the depth registered,
 - (b) the trace appearing to pass through the transmission line,
 - (c) the feathery nature of the trace.
6. An acknowledgement of receipt will be sent. When a Notice to Mariners is issued, the sender's vessel or name is quoted as the source unless the same information is also received in foreign Notices to Mariners.
7. Reports of shoals, uncharted dangers and defects in aids to navigation may also be made to the appropriate Singapore Port Operations Control Station on VHF Channels 10, 12, 14, 68 or 73.

HYDROGRAPHIC NOTE

To:

Chief Hydrographer
Hydrographic Department
Maritime and Port Authority of Singapore
460 Alexandra Road PSA Building #20-00
Singapore 119963

Tel : (65) 6375 1227
Fax : (65) 6278 7646
Email : hydrographic@mpa.gov.sg

Sender's Contact Details :

Date :

Name of Vessel :

Address of Sender :

Tel : Fax :

Email :

Nature of Observation :

General Location :

Subject :

Position : Lat. Long.

Charts Used :

Date & Time of Observation :

Details :

.....

.....

Attachment :

Equipment Used :

Type of Position Fixing : GPS / DGPS Others :

Type of Echo Sounder :

Name and Signature :

Ship's/Company's stamp :