



SINGAPOREAN NOTICES TO MARINERS

SECTION	CONTENT	Page
I	Index of Charts & Publications	1
II	New Publications	10
	Notices to Mariners and Chart Corrections	12
	Temporary and Preliminary Notices	13
III	Navigational Information	17
	Amendments to Publications	19
IV	Reprint of Radio Navigational Warnings	20
V	Reprint of Admiralty Notices to Mariners for Dual Badged Charts	21

The monthly Notices to Mariners contain corrective information affecting charts published by the Hydrographic Department, Maritime and Port Authority of Singapore. The information contained in these Notices should be updated on the charts affected. Notices under Section II apply only to the particular Singaporean Chart(s) indicated.

Mariners are requested to notify the Chief Hydrographer, Maritime and Port Authority of Singapore, immediately on the discovery of new dangers or suspected dangers to navigation and of changes or defects in aids to navigation. See Hydrographic Note on back page.

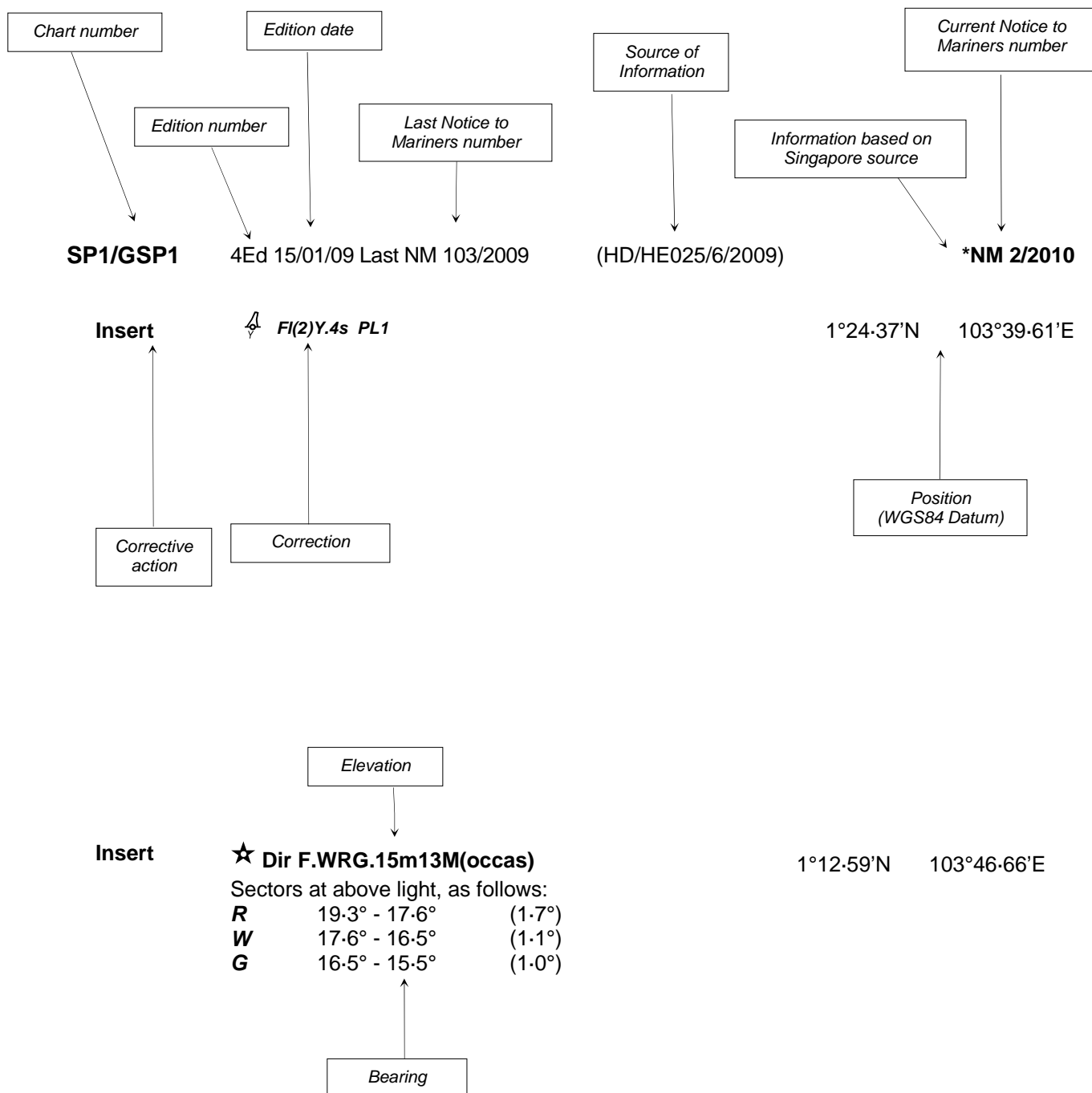
The monthly Singaporean Notices to Mariners can be accessed directly from the MPA website:
[http://www.mpa.gov.sg/sites/port_and_shipping/circulars_and_notices/singapore_notices_to_mariners\(ntm\).page](http://www.mpa.gov.sg/sites/port_and_shipping/circulars_and_notices/singapore_notices_to_mariners(ntm).page)

This service is offered free of charge.

Hydrographic Department
 Maritime and Port Authority of Singapore
 460 Alexandra Road
 PSA Building #20-00
 Singapore 119963
 Tel: (65) 6375 1227
 Fax: (65) 6278 7646

EXPLANATION OF FORMAT

The elements of a typical chart correction are explained below.



Notes:

- a) Notice to Mariners number followed by:
 - T** indicates a Temporary Notice (eg. ***NM 1T/2010**).
 - P** indicates a Preliminary Notice (eg. ***NM 3P/2010**).
- b) Bearings are true reckoned clockwise from 000° to 359° ; those relating to lights are from seaward.
- c) Heights and elevations are above Mean High Water Springs.

I
INDEX OF CHARTS AND PUBLICATIONS

DESCRIPTION	NOTICE NO.	PAGE NO.
Index of Singaporean Charts	-	4
Index of Dual Badged Charts	-	6
Index of Singapore Electronic Navigational Charts (ENC)	-	9
New Publication "SINGAPORE TIDE TABLES YEAR 2010"	-	10
New Publication "SINGAPORE PORT INFORMATION 2010/2011"	-	10, 11
New Edition Singaporean Chart	-	11
Numerical Index to Notices to Mariners of 2009	*1	12
Singaporean Chart SP1/GSP1	*2	12
Singaporean Chart 200	3	12
Temporary and Preliminary Notices	-	13
Dredging in the West Bound Lane of the Traffic Separation Scheme in the Singapore Strait	*4T	13, 14
Dredging South of the Singapore Port Limit and in the West Bound Lane of the Traffic Separation Scheme in the Singapore Strait	*5T	14, 15
Submarine Cable Repair Work - Singapore Strait	*6T	16
Submarine Cable Repair Work - Singapore Strait	7T	16
Port Marine Notices	*8	17
Straits of Malacca and Singapore Routeing System	*9	17, 18
Singaporean Print-On-Demand (POD) Charts	*10	18

* Denotes information are based on Singapore source.

I
INDEX OF CHARTS AND PUBLICATIONS

DESCRIPTION	NOTICE NO.	PAGE NO.
Amendments to Publications	-	19
Reprint of Radio Navigational Warnings	-	20
Reprint of Admiralty Notices to Mariners for Dual Badged Charts	-	21
Singapore Electronic Navigational Charts (ENC) Distributors	-	27, 28
Agents for the Maritime and Port Authority of Singapore Nautical Charts and Publications	-	28

* Denotes information are based on Singapore source.

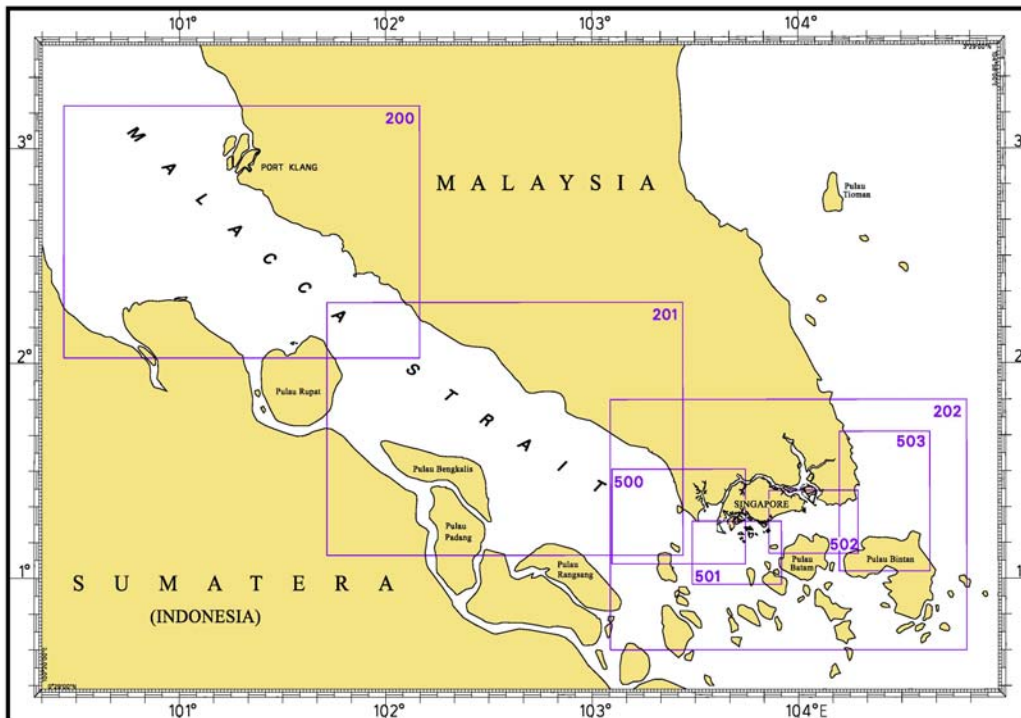
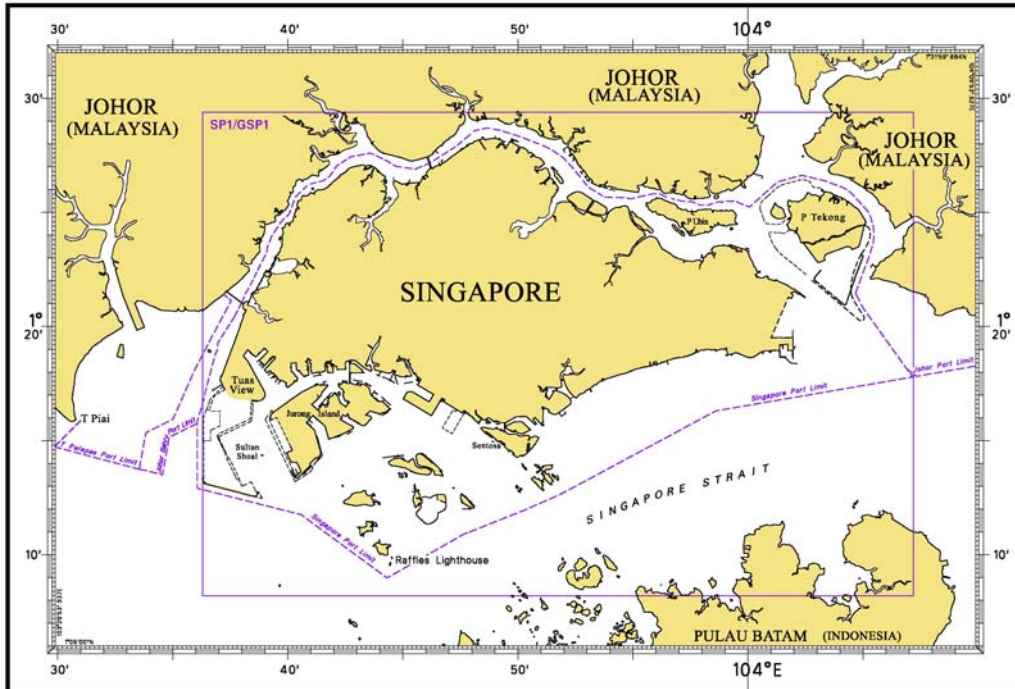
INDEX OF CHARTS AND PUBLICATIONS

NOTICE NO.	DESCRIPTION	PAGE NO.	NOTICE NO.	DESCRIPTION	PAGE NO.
-	Index of Singaporean Charts	4	*8	Port Marine Notices	17
-	Index of Dual Badged Charts	6	*9	Straits of Malacca and Routeing System	17, 18
-	Index of Singapore Electronic Navigational Charts (ENC)	9	*10	Singaporean Print-On-Demand (POD) Charts	18
-	New Publication "SINGAPORE TIDE TABLES YEAR 2010"	10	-	Amendments to Publications	19
-	New Publication "SINGAPORE PORT INFORMATION 2010/2011"	10, 11	-	Reprint of Radio Navigational Warnings	20
-	New Edition Singaporean Chart	11	-	Reprint of Admiralty Notices to Mariners for Dual Badged Charts	21
*1	Numerical Index to Notices to Mariners of 2009	12	-	Singapore Electronic Navigational Charts (ENC) Distributors	27, 28
*2	SP1/GSP1	12	-	Agents for the Maritime and Port Authority of Singapore Nautical Charts and Publications	28
3	200	12			
-	Temporary and Preliminary Notices	13			
*4T	Dredging in the West Bound Lane of the Traffic Separation Scheme in the Singapore Strait	13, 14			
*5T	Dredging South of the Singapore Port Limit and in the West Bound Lane of the Traffic Separation Scheme in the Singapore Strait	14, 15			
*6T	Submarine Cable Repair Work – Singapore Strait	16			
7T	Submarine Cable Repair Work – Singapore Strait	16			

* Denotes information are based on Singapore source.

I INDEX OF CHARTS AND PUBLICATIONS

INDEX OF SINGAPOREAN CHARTS



Notes:
 Updated SINGAPOREAN Charts are available through our Print-On-Demand (POD) Chart Service. For more information, refer to Section III – Navigational Information and these charts can be purchased from our authorised Chart Agents:
 DPM (Singapore) Pte Ltd, E.W. Liner Charts & Publications Pte Ltd and Motion Smith.

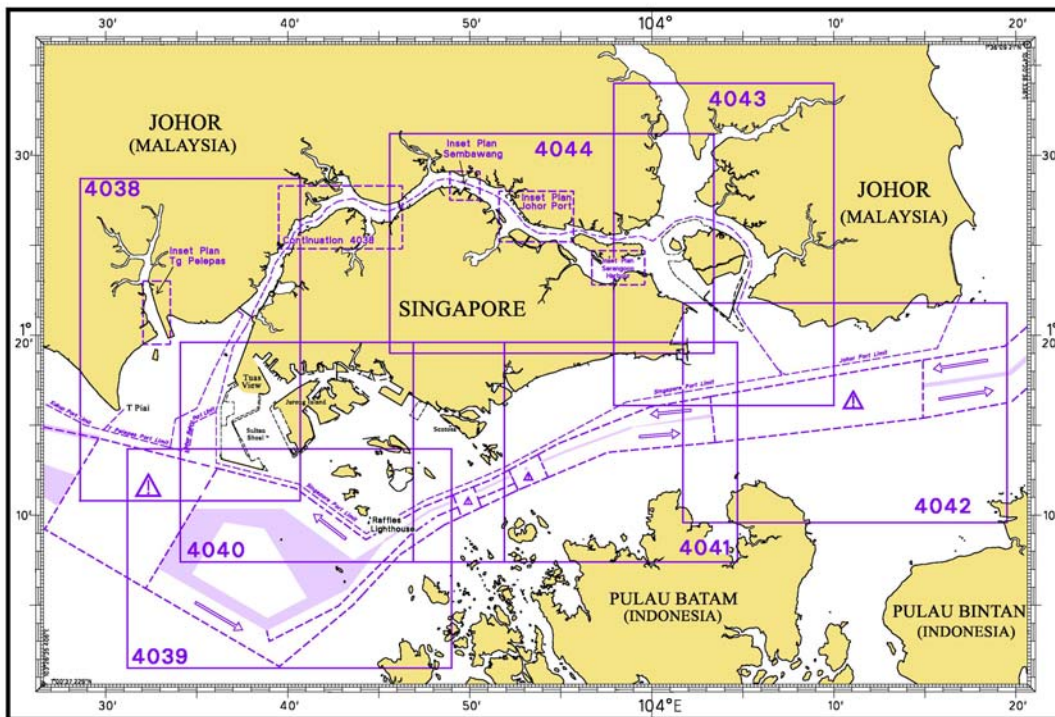
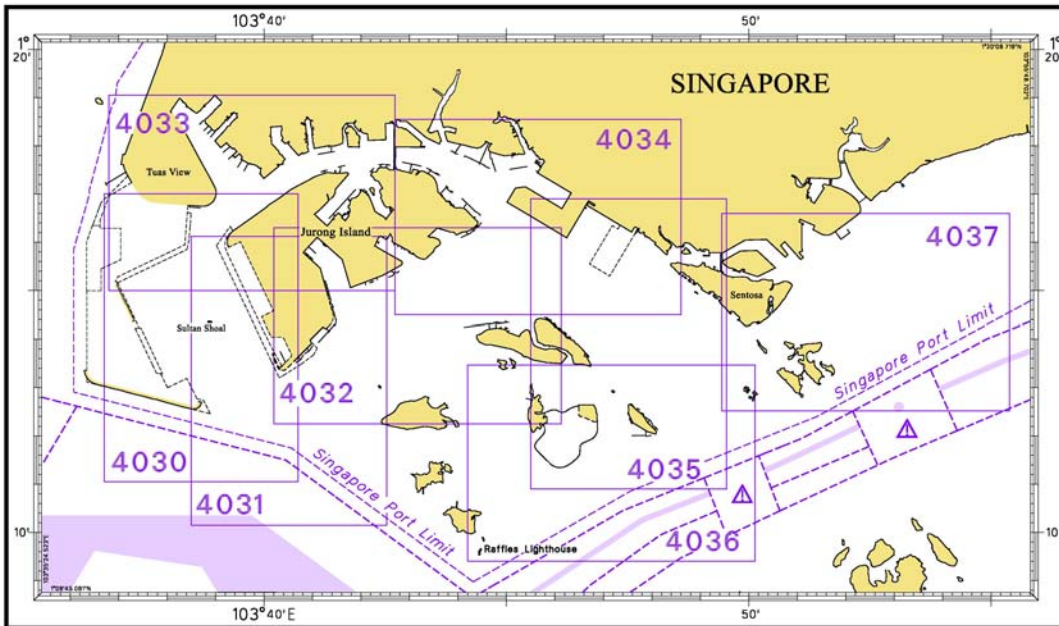
I
INDEX OF CHARTS AND PUBLICATIONS

SINGAPOREAN CHARTS CATALOGUE

Chart No.	Chart Title	Scale 1:	Date Published of Latest Edition
1	Symbols and Abbreviations used on Singaporean produced Nautical Charts	-	July 2001
Charts for Small Craft	Singapore Strait & Adjacent Waterways	Various	15/01/09
SP1	Anchorage and Aids to Navigation	60 000	15/01/09
GSP1	Anchorage and Aids to Navigation (with Area Reference)	60 000	15/01/09
200	Malacca Strait - Port Klang to Tanjung Keling	200 000	30/11/05
201	Malacca Strait - Tanjung Keling to Western Entrance of Singapore Strait	200 000	05/10/07
202	Singapore Strait	200 000	24/09/09
500	Malacca and Singapore Straits – Pulau Pisang to Raffles Lighthouse	75 000	30/08/07
501	Singapore Strait – Western Part	50 000	24/09/09
502	Singapore Strait - Eastern Part	50 000	25/09/08
503	South China Sea - Eastern Approaches and Entrance to Singapore Strait	75 000	25/09/08

I INDEX OF CHARTS AND PUBLICATIONS

INDEX OF DUAL BADGED CHARTS



I
INDEX OF CHARTS AND PUBLICATIONS

DUAL BADGED CHARTS CATALOGUE

Chart No.	Chart Title	Scale 1:	Date Published of Latest Edition
4030	Port of Singapore West Jurong Anchorages and Temasek Fairway	10 000	22/05/08
4031	Port of Singapore Western Approaches to Jurong Island	10 000	22/05/08
4032	Port of Singapore Sinki Fairway	10 000	22/05/08
4033	Port of Singapore Tuas Bay, West Jurong Channel and Pesek Basin	10 000	22/05/08
4034	Port of Singapore East Jurong Channel, Pasir Panjang Terminal and West Keppel Fairway	10 000	8/10/09
4035	Port of Singapore Western Anchorages, Jong Fairway and Cruise Bay	10 000	8/10/09
4036	Port of Singapore Raffles Lighthouse to The Sisters	10 000	21/05/09
4037	Port of Singapore Keppel Harbour, Tanjong Pagar Terminal and Approaches	10 000	21/05/09
4038	Malaysia and Singapore Johor Strait – Western Part	30 000	17/08/06
4039	Indonesia, Singapore and Malaysia Western Approaches to Main Strait	30 000	23/07/09
4040	Singapore, Indonesia and Malaysia, Tuas View to Pulau Sakijang Bendera (S. John's Island)	30 000	23/07/09
4041	Singapore and Indonesia, Pulau Sebarok to Changi	30 000	23/07/09

I
INDEX OF CHARTS AND PUBLICATIONS

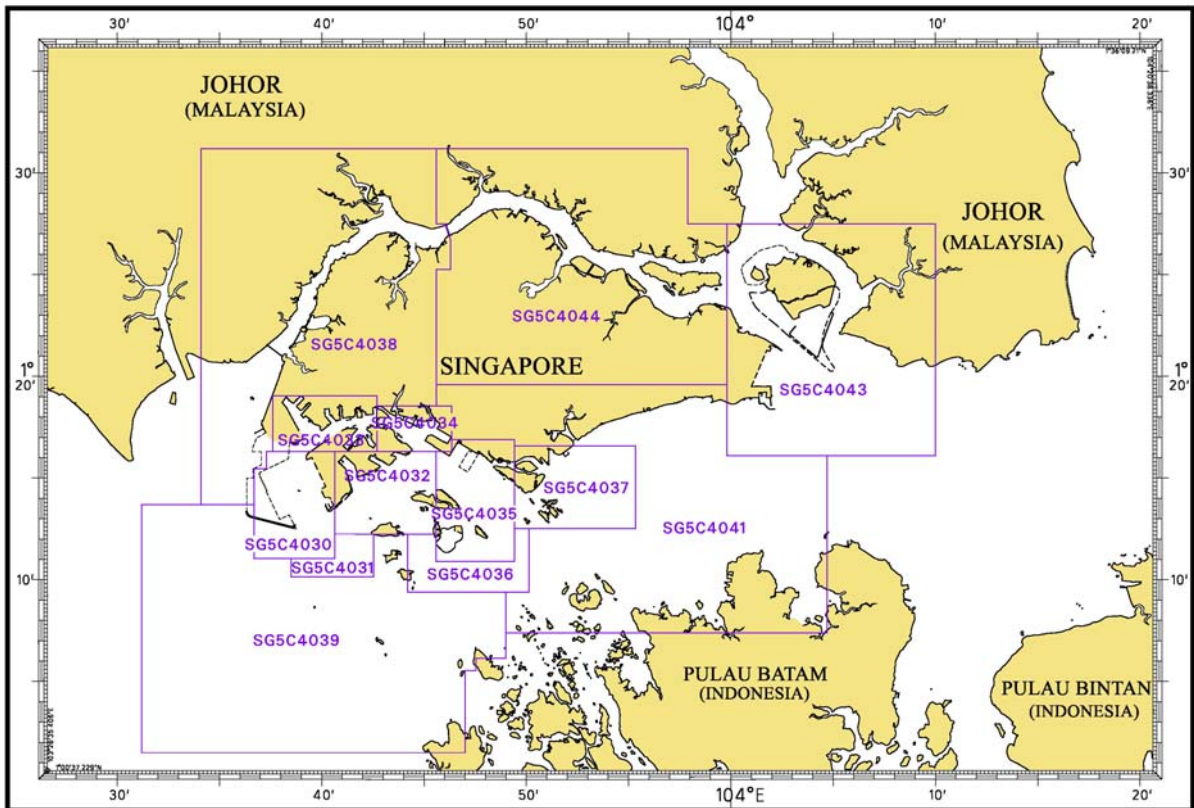
DUAL BADGED CHARTS CATALOGUE

4042	Indonesia, Malaysia and Singapore, Changi to Pulau Mungging and Tanjung Buntan to Tanjung Tondang	30 000	24/07/08
4043	Malaysia and Singapore Kuala Johor and Sungai Johor	30 000	23/07/09
4044	Singapore and Malaysia Johor Strait - Eastern Part	30 000	23/07/09

INDEX OF SINGAPOREAN PUBLICATIONS**HYDROGRAPHIC PUBLICATIONS**

Item	Title
1	Singapore Tide Tables Year 2010
2	Singapore Port Information 2010/2011

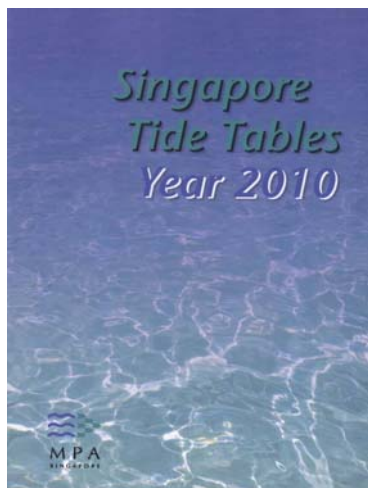
I
INDEX OF CHARTS AND PUBLICATIONS
INDEX OF SINGAPORE ELECTRONIC NAVIGATIONAL CHARTS (ENC)



INDEX OF SINGAPORE ENC 2010

Cells Name	Cell Descriptions	Latitude	Longitude
SG5C4030.000	West Jurong Anchorages and Temasek Fairway	1°11.050'N 1°16.300'N	103°36.700'E 103°40.640'E
SG5C4031.000	Western Approaches to Jurong Island	1°10.150'N 1°12.250'N	103°38.500'E 103°42.530'E
SG5C4032.000	Sinki Fairway	1°12.250'N 1°16.300'N	103°40.640'E 103°45.580'E
SG5C4033.000	Tuas Bay, West Jurong Channel and Pesek Basin	1°16.300'N 1°19.050'N	103°37.600'E 103°42.700'E
SG5C4034.000	East Jurong Channel, Pasir Panjang Terminal and West Keppel Fairway	1°16.300'N 1°18.550'N	103°42.700'E 103°46.356'E
SG5C4035.000	Western Anchorages, Jong Fairway and Cruise Bay	1°10.900'N 1°16.900'N	103°45.580'E 103°49.425'E
SG5C4036.000	Raffles Lighthouse to The Sisters	1°09.400'N 1°12.520'N	103°44.200'E 103°50.130'E
SG5C4037.000	Keppel Harbour, Tanjong Pagar Terminal and Approaches	1°12.520'N 1°16.590'N	103°49.425'E 103°55.340'E
SG5C4038.000	Johor Strait – Western Part	1°13.700'N 1°31.200'N	103°34.100'E 103°46.300'E
SG5C4039.000	Western Approaches to Main Strait	1°01.500'N 1°13.700'N	103°31.200'E 103°49.000'E
SG5C4041.000	Pulau Sebarok to Changi	1°07.400'N 1°19.600'N	103°45.600'E 103°04.700'E
SG5C4043.000	Kuala Johor and Sungai Johor	1°16.100'N 1°27.500'N	103°59.800'E 104°10.000'E
SG5C4044.000	Johor Strait – Eastern Part	1°19.600'N 1°31.200'N	103°45.600'E 103°59.800'E

II NEW PUBLICATIONS



SINGAPORE TIDE TABLES YEAR 2010

Summary of Publication

- (a) This 239-page book contains Tidal Height and Tidal Stream Predictions covering stations in Singapore Port waters and selected stations along the Malacca and Singapore Straits.

The predictions consist of 5 main segments to facilitate easy reference:

- High and Low Water Predictions
 - Hourly Tidal Height Predictions
 - Hourly Tidal Stream Predictions
 - Maximum and Slack Tidal Stream Predictions
 - Malacca Strait – High and Low Water Predictions
- (b) The presentation of the predictions is enhanced with colour codes so as to differentiate the various states of tidal heights, eg falling or rising tide and tidal stream directions. Moon phases, eg full and new moon, are also included in each calendar month to complement the prediction values.
- (c) The tidal heights are given in metres above Chart Datum (CD). The CD is the datum of soundings shown on the Singaporean Charts and Dual Badged Charts covering the area. A table showing the various tidal levels eg. Mean High Water Springs, Mean Low Water Springs etc, at various stations with reference to CD is also included in this publication.

To Whom Will It Be Useful?

Mariners, shipping community, port users and other interested users.

Frequency of Publication

Annually.

Cost of Publication

To be advised by Chart Agents.

Order Enquires:

This publication is available from the following Chart Agents:

- 1) DPM (Singapore) Pte Ltd
- 2) E.W. Liner Charts & Publications Pte Ltd
- 3) Motion Smith

(Please refer to Page 28 for details.)

NEW EDITION SINGAPORE PORT INFORMATION 2010/2011 TO BE PUBLISHED IN JANUARY 2010.

Summary of Publication

This publication contains Port Information such as:

- 1) Routeing System in the Straits of Malacca and Singapore.
- 2) Guide to VHF Communication, Pilotage, and Navigational Channels – Controlling Depths.
- 3) List of Aids to Navigation.
- 4) Port Facilities - Wharves, Berths, Docks and Berth Operators' Information.
- 5) IALA Maritime Buoyage System.
- 6) Index and Chart Catalogue of Singaporean Charts and Dual Badged Charts.

II NEW PUBLICATIONS

To Whom Will It Be Useful?

Mariners, shipping community, port users and other interested users.

Frequency / Year of Publication

Once every 2 years.

Cost of Publication

To be advised by Chart Agents.

Order Enquiries:

This publication would be available from the following Chart Agents:

- 1) DPM (Singapore) Pte Ltd
- 2) E.W. Liner Charts & Publications Pte Ltd
- 3) Motion Smith

(Please refer to Page 28 for details.)

NEW EDITION SINGAPOREAN CHARTS TO BE PUBLISHED ON 21st JANUARY 2010

Chart No.	:	SP1
Title	:	Anchorage and Aids to Navigation
Coverage	:	Lat 1° 08-20'N 1° 29-40' N Long 103° 35-70'E 104° 07-20' E
Scale	:	1: 60 000
Date Published	:	21 st January 2010
Size of chart	:	973.9 x 651.2 mm
Remarks	:	This new edition includes: - <ul style="list-style-type: none"> • New topography on eastern Jurong Island. • Pulau Ular Jetty and Oil Tanking Jetty (Jurong Island). • Approaches to Pasir Panjang Reclamation Area. • Submarine cables from Tanah Merah and Changi Ferry Terminal. • Depth contours covering the entire chart.

This new edition supersedes the earlier edition published on 15th January 2009.

Chart No.	:	GSP1
Title	:	Anchorage and Aids to Navigation (with area reference)
Coverage	:	Lat 1° 08-20'N 1° 29-40' N Long 103° 35-70'E 104° 07-20' E
Scale	:	1: 60 000
Date Published	:	21 st January 2010
Size of chart	:	973.9 x 651.2 mm
Remarks	:	This new edition includes: - <ul style="list-style-type: none"> • New topography on eastern Jurong Island. • Pulau Ular Jetty and Oil Tanking Jetty (Jurong Island). • Approaches to Pasir Panjang Reclamation Area. • Submarine cables from Tanah Merah and Changi Ferry Terminal. • Depth contours covering the entire chart.

This new edition supersedes the earlier edition published on 15th January 2009.

II
NOTICES TO MARINERS AND CHART CORRECTIONS

*(NM 1/2010) NUMERICAL INDEX TO NOTICES TO MARINERS OF 2009 (1 TO 116)

CHART NO.	PUBLISHED	YEAR	NOTICES NO.
SP1, GSP1	4 Ed 15/01/09	2009	13-14-26-40-41-42-43-50-61-72-73-85-96-103-110
200	2Ed 30/11/05	2009	2-3-4-15-16-17-51-52-74
201	3Ed 05/10/07	2009	17-18-19-27-62-75-76-86-104-111-112
202	6Ed 24/09/09	2009	111-113
500	5Ed 30/08/07	2009	62-63-73-86-104
501	5Ed 24/09/09	2009	-
502	4Ed 25/09/08	2009	14-53-54-79-87-88
503	3Ed 25/09/08	2009	53-54-77-79-87

SP1/GSP1 4Ed 15/01/09 Last NM 110/2009 (HD/HE025/153/2009) ***NM 2/2010**

Relocate  **Fl.Y.4s TMSI 1**
(1°18-27'N, 103°37-05'E) 1°18-08'N 103°36-94'E

200 2Ed 30/11/05 Last NM 74/2009 (Peninsular Malaysia Marine Dept. Notice 70/2009) **NM 3/2010**

Insert  **Fl.3s30m15M One Fathom Bank North**
with **Racon (T)** 3°00-91'N 100°51-89'E

Delete  **VQ(6)+LFl. 10s** 3°00-76'N 100°51-86'E

II TEMPORARY AND PRELIMINARY NOTICES

*(NM 4T/2010) DREDGING IN THE WEST BOUND LANE OF THE TRAFFIC SEPARATION SCHEME IN THE SINGAPORE STRAIT.

Purpose

Mariners navigating in the Singapore Strait are hereby informed that dredging operations will be carried out in the westbound lane of the Traffic Separation Scheme.

Date

With effect from Dec 2009 until Nov 2011 (24 months).

Duration

24 hours a day, seven days a week with effect from Dec 2009.

Working Area

Within an area bounded by the following coordinates from Singapore Port Limit and the area within the westbound lane of the Traffic Separation Scheme (please see chart attached):

WGS 84 Datum		
Points	Lat. (N)	Long. (E)
1	1°15.148'	103°58.017'
2	1°15.911'	103°59.926'
3	1°16.106'	104°01.019'
4	1°16.217'	104°01.019'
5	1°16.321'	104°01.630'
6	1°16.258'	104°01.656'
7	1°15.902'	104°00.796'
8	1°15.625'	104°00.126'
9	1°15.046'	103°58.675'
10	1°14.838'	103°58.145'

Vessels

Vessels involved in the operations will display the appropriate day and night signals and will stand by on VHF Ch 14 and 12 and shall follow any traffic information given by Vessel Traffic Information Service (VTIS).

Navigational Broadcast

Navigational warning broadcast will be promulgated by VTIS on VHF CH 09 and NAVTEX to inform vessels of the dredging operation. Mariners are to maintain a listening watch for the above safety information.

Caution

Mariners are advised to:

- (a) Navigate with caution and proceed at slow speed when approaching the area; and
- (b) Keep well clear of the working vessels.

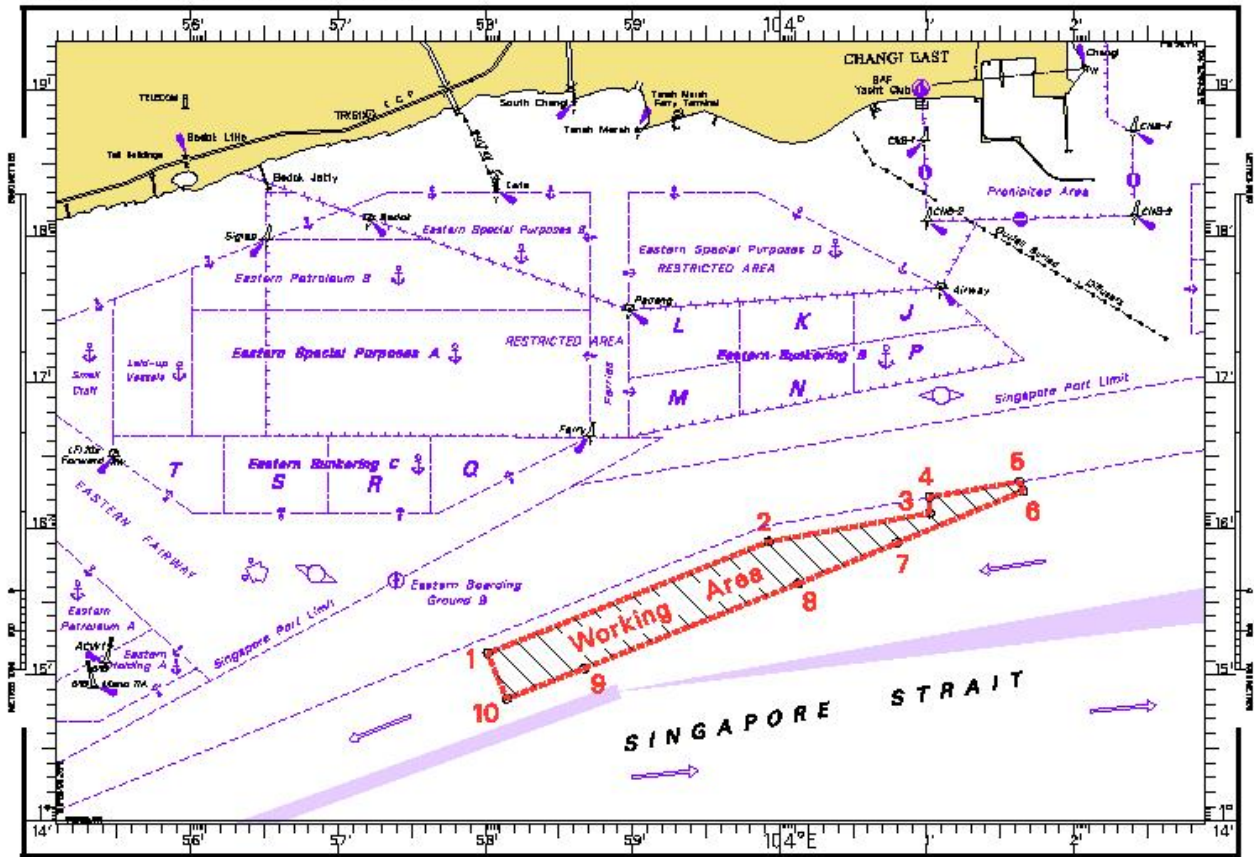
Charts affected: SP1/GSP1, 202, 502 & 4041

Source: PENTA-OCEAN/TOA CORPORATION/McCONNEL DOWELL JOINT VENTURE
HD/DB67/011/2009

(This is a repetition of Notice No. *115T/2009)

II TEMPORARY AND PRELIMINARY NOTICES

DREDGING IN THE WEST BOUND LANE OF THE TRAFFIC SEPARATION SCHEME IN THE SINGAPORE STRAIT



***(NM 5T/2010) DREDGING SOUTH OF THE SINGAPORE PORT LIMIT AND IN THE WEST BOUND LANE OF THE TRAFFIC SEPARATION SCHEME IN THE SINGAPORE STRAIT**

Purpose

Mariners navigating in the Singapore Strait are hereby informed that dredging operations will be carried out south of the Singapore Port Limit and in the westbound lane of the Traffic Separation Scheme.

Date

With effect from 17 Dec 2007 until 17 Dec 2011 (48 months).

Duration

24 hours a day, seven days a week with effect from 10 April 2008. On going dredging works will be carried out during daylight hours prior to 10 April 2008.

Working Area

Within an area bounded by the following coordinates south of the Singapore Port Limit and in the area within the westbound lane of the Traffic Separation Scheme (please see chart attached):

WGS 84 Datum		
Points	Lat. (N)	Long. (E)
1	1°15.827'	103°57.737'
2	1°14.865'	103°58.134'

II TEMPORARY AND PRELIMINARY NOTICES

3	1°13.298'	103°54.401'
4	1°13.884'	103°54.131'

Vessels

Vessels involved in the operations will display the appropriate day and night signals and will stand by on VHF Ch 14 and 12 and shall follow any traffic information given by Vessel Traffic Information Service (VTIS).

Navigational Broadcast

Navigational warning broadcast will be promulgated by VTIS on VHF CH 09 and NAVTEX to inform vessels of the dredging operation. Mariners are to maintain a listening watch for the above safety information.

Caution

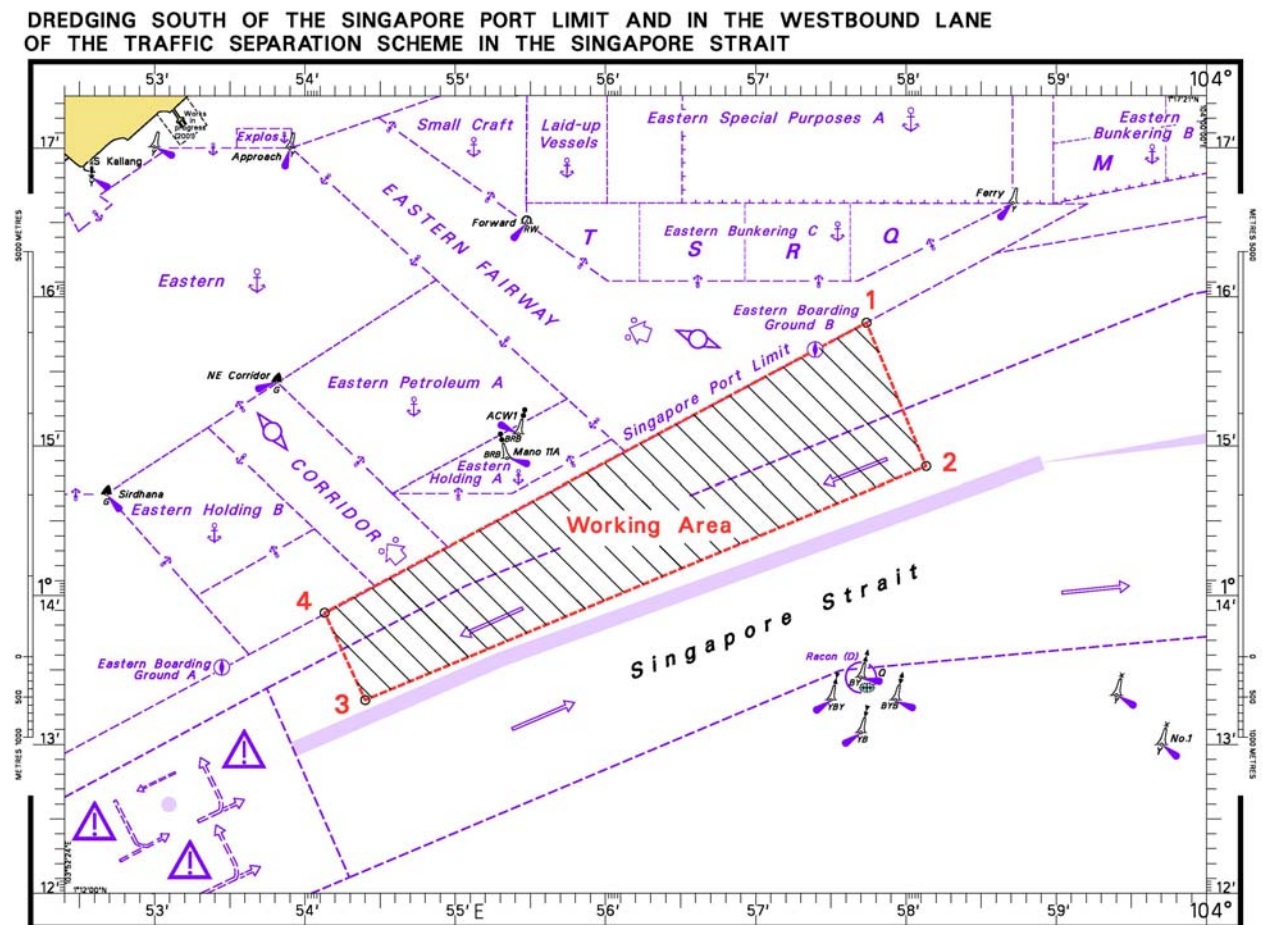
Mariners are advised to:

- (a) Navigate with caution and proceed at a safe speed when approaching the area; and
- (b) Keep well clear of the working vessels.

Charts affected: SP1/GSP1, 202, 501, 502, 4037 & 4041

Source: HD/DB67/010/2008

(This is a repetition of Notice No.*10P/2009)



II
TEMPORARY AND PRELIMINARY NOTICES

***(NM 6T/2010) SUBMARINE CABLE REPAIR WORK – SINGAPORE STRAIT**

Remark : Repair of PACNET EAC2 Segment 2A1 submarine cable operation.
Date : With effect from 1st to 12th January 2010.

1. Cable repairs are in progress within the working area bounded by the following positions (WGS84).

1°20-67'N	104°20-32'E to
1°23-00'N	104°22-50'E to
1°22-55'N	104°22-95'E to
1°20-43'N	104°20-55'E

2. Charts affected : 202 and 503

3. Mariners are advised
(a) to navigate with caution
(b) not to anchor or trawl in the vicinity of the cable route

Source : HD/DB67/012/2009

(NM 7T/2010) SUBMARINE CABLE REPAIR WORK – SINGAPORE STRAIT

Remark : Repair of submarine cable, Batam-Rengit Cable System (BRCS) Repair Operation No.5.
Date : With effect from 18th December 2009 to 18th January 2010.

1. Cable repairs are in progress within the working area bounded by the following positions (WGS84).

1°17-41'N	104°14-40'E to
1°18-21'N	104°14-09'E to
1°18-72'N	104°16-13'E to
1°19-25'N	104°16-01'E to
1°18-59'N	104°13-42'E to
1°17-26'N	104°13-70'E

2. Charts affected : 202, 502 and 503

3. Mariners are advised
(a) to navigate with caution.
(b) not to anchor or trawl in the vicinity of the cable route.

Source : Peninsular Malaysia Marine Department Notice to Mariners No. 75T/2009.

III NAVIGATIONAL INFORMATION

*(NM 8/2010) PORT MARINE NOTICES

The following PMNs have been shortlisted, as they would be of particular interest to mariners.

These notices can be accessed directly from MPA website:

http://www.mpa.gov.sg/sites/port_and_shipping/circulars_and_notices/port_marine_notices.page

PMN No.	Subject
79/2009	Sand mining at Area 1 and dumping at Pasir Panjang Terminal Project Working Area.
81/2009	Reclamation of Jurong Island Phase 4.
89/2009	Marine construction works off Marina Barrage.
93/2009	Extension works at Tuas Power Station Jetty.
99/2009	Ferry route between West Coast ECC Jetty (WCECC) and Pulau Ular Ferry Terminal (PUFT).
104/2009	Dredging and Marine construction works at Sungei Serangoon.
105/2009	A) Maintenance dredging works at Tanjong Pagar, Keppel and Brani Terminals. B) Upgrading of Berth K12 at Keppel Terminal.
144/2009	Reclamation at Pasir Panjang Terminal and Pasir Panjang Wharves.
149/2009	Underwater drilling and blasting works at Pasir Panjang Fairway.
155/2009	Construction of sea wall at Marina Wharf.
161/2009	Restoration of shoreline along Pasir Ris Park.
163/2009	Reclamation, installation works and construction of Crane Dance structure in Cruise Bay.
164/2009	Construction of Sentosa Broadwalk.
167/2009	Temporary Staging Ground at Sentosa.
170/2009	Reclamation at Pulau Tekong.
171/2009	Sand mining at South of East Keppel Fairway.
172/2009	Construction of International Cruise Terminal at Marina South.

*(NM 9/2010) STRAITS OF MALACCA AND SINGAPORE ROUTEING SYSTEM

Information concerning schemes shown on Singaporean Charts.
(Former NM 1/11/2009 is cancelled)

1. The information concerning the Straits of Malacca and Singapore Routeing System are charted in the Singaporean Charts 200, 201, 202, 500, 501, 502, 503 and Dual Badged Charts 4038, 4039, 4040, 4041, 4042 and 4043. All positions are referred to World Geodetic System 1984 (WGS 84) datum.

III NAVIGATIONAL INFORMATION

2. The description of the Traffic Separation Scheme and the rules for vessels navigating through the Straits of Malacca and Singapore are published in the Singapore Port Information 2010/2011.
-

*(NM 10/2010) **SINGAPOREAN PRINT-ON-DEMAND (POD) CHARTS**

Print-On-Demand (POD) Charts are the most up-to-date paper nautical charts printed for navigational use. These nautical charts are produced in accordance with the International Hydrographic Organisation (IHO) charting specifications. These official nautical charts are continually updated to the latest Notices to Mariners before they are printed and sold to users.

These POD Charts include SP1/GSP1, 200, 201, 202, 500, 501, 502, 503.

BENEFITS TO OUR CUSTOMERS

Convenience

Customers need not make numerous hand corrections to the nautical charts before use. In addition the updated POD Charts are more accurate and reliable than offset printed charts with hand corrections.

Clarity

Clarity in the presentation of updated information as compared to lithographic printed charts, where in some cases there are several overlapping corrections over existing information.

Coverage

The POD Charts cover the Malacca and Singapore Straits, from One Fathom Bank to Horsburgh Lighthouse.

**III
AMENDMENTS TO PUBLICATIONS**

Nil

IV
REPRINT OF RADIO NAVIGATIONAL WARNINGS

TT173

VSLs IN EAST JOHOR STRAIT ARE ADVISED TO NAVIGATE WITH CAUTION WHEN NEAR THE PROJECT AREAS OFF PULAU TEKONG, PULAU SERANGOON, CHANGI AND MALANG PAPAN AS SHALLOW WATER AREAS EXIST. VESSELS ARE ADVISED TO KEEP LOOKOUT FOR TUGS AND BARGES NAVIGATING NEAR THE PROJECT AREAS AND PASSENGER FERRIES CROSSING BETWEEN CHANGI AND PULAU TEKONG AND VICINITY OF PASIR GUDANG.

TT619

DREDGER QUEEN OF PENTA OCEAN IS CONDUCTING DREDGING OPERATIONS IN POSITIONS BOUNDED BY COORDINATES:

01°15.827' N 103°57.737' E

01°14.865' N 103°58.134' E

01°13.298' N 103°54.401' E

01°13.884' N 103°54.131' E

VESSELS ARE ADVISED TO PROCEED AT SAFE SPEED AND TO GIVE A WIDE BERTH.

TT753

A SMALL WOODEN CARGO BOAT 10M IN LENGTH SUNK AT 01°15.73'N 103°32.1'E.

TT811

VISIBILITY IN THE SINGAPORE STRAIT AND PORT WATERS IS REDUCED BY HAZE. ALL VSLs ARE ADVISED TO NAVIGATE WITH CAUTION.

ISSUED BY SINGAPORE PORT OPERATIONS CONTROL CENTRE
(as at 27th December 2009)

V
**REPRINT OF ADMIRALTY NOTICES TO MARINERS
 FOR DUAL BADGED CHARTS**

These notices can be accessed directly from UKHO Website:

<http://www.ukho.gov.uk/ProductsandServices/MaritimeSafety/Pages/NMPublic.aspx>

6553* SINGAPORE – Jurong Island South-eastwards – West Jurong Channel, Sinki Fairway and Pasir Panjang Terminal – Submarine pipeline. Dredged depth. Dredged areas. Berths.

Source: Maritime and Port Authority of Singapore

Chart 4032 [previous update 6003/2009] WGS84 DATUM


Insert	Submarine pipeline,  , joining:	(a) 1° 16'·172N., 103° 44'·011E. (shore) (b) 1° 14'·139N., 103° 45'·321E. (shore) (a)-(b) above
	legend, <i>Water (buried)</i> , along:	

Chart 4033 [previous update 4507/2009] WGS84 DATUM

Amend	dredged depth to, 9.0m (2009), centred on:	1° 17'·562N., 103° 41'·636E.
-------	--	------------------------------

Chart 4034 [previous update New Edition 08/10/2009] WGS84 DATUM



Insert	the accompanying block, showing new berths and dredged areas, centred on:	1° 16'· 616N., 103° 45'·281E.
	Submarine pipeline,  , joining:	(a) 1° 16'·172N., 103° 44'·011E. (shore) (b) 1° 14'·500N., 103° 45'·087E. (S border) (a)-(b) above
	legend, <i>Water (buried)</i> , along:	

Chart 4040 [previous update 6003/2009] WGS84 DATUM

Insert	Submarine pipeline,  , joining:	(a) 1° 16'·17N., 103° 44'·01E. (shore) (b) 1° 14'·14N., 103° 45'·32E. (shore) (a)-(b) above
	legend, <i>Water (buried)</i> , along:	

6932* SINGAPORE – West Jurong, Pasir Panjang and Keppel Harbour – Sultan Shoal and Marina South - Mooring buoys. Buoyage. Maritime limit. Works.

Source: Maritime and Port Authority of Singapore

Chart 4030 [previous update 4211/2009] WGS84 DATUM

Insert		1° 14'·390N., 103° 38'·993E.
Substitute	 for 	1° 14'·465N., 103° 38'·908E.
	 for 	1° 14'·452N., 103° 38'·954E. 1° 14'·410N., 103° 38'·980E. 1° 14'·362N., 103° 38'·984E. 1° 14'·256N., 103° 38'·892E. 1° 14'·275N., 103° 38'·817E.

V
**REPRINT OF ADMIRALTY NOTICES TO MARINERS
 FOR DUAL BADGED CHARTS**

Chart 4031 [*previous update 4211/2009*] WGS84 DATUM


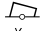
Insert		1° 14'·390N., 103° 38'·993E.
Substitute	 for 	1° 14'·465N., 103° 38'·908E.
	 for 	1° 14'·452N., 103° 38'·954E. 1° 14'·410N., 103° 38'·980E. 1° 14'·362N., 103° 38'·984E. 1° 14'·256N., 103° 38'·892E. 1° 14'·275N., 103° 38'·817E.

Chart 4034 [*previous update 6553/2009*] WGS84 DATUM




Insert	maritime limit, pecked line, joining: areas, centred on:	(a) 1° 16'·255N., 103° 46'·777E. () (b) 1° 16'·513N., 103° 46'·742E. (c) 1° 16'·607N., 103° 46'·797E. 1° 16'·702N., 103° 46'·645E. (shore)
	 FI(2)Y.8s PKHV4	(c) above
Move	 FI(2)Y.8s PKHV1 , from: to:	(b) 1° 16'·417N., 103° 46'·849E. (b) above
Delete	former maritime limit, pecked line, joining:	(a) above 1° 16'·387N., 103° 46'·855E. (d) above 1° 16'·590N., 103° 46'·951E. (shore)

Chart 4035 [*previous update New Edition 08/10/2009*] WGS84 DATUM





Insert	maritime limit, pecked line, joining:	(a) 1° 16'·255N., 103° 46'·777E. () (b) 1° 16'·513N., 103° 46'·742E. (c) 1° 16'·607N., 103° 46'·797E. 1° 16'·702N., 103° 46'·645E. (shore)
	 FI(2)Y.8s PKHV4	(c) above
Move	 FI(2)Y.8s PKHV1 , from: to:	(d) 1° 16'·417N., 103° 46'·849E. (b) above
Delete	former maritime limit, pecked line, joining:	(a) above 1° 16'·387N., 103° 46'·855E. (d) above 1° 16'·590N., 103° 46'·951E. (shore)

Chart 4037 [*previous update 5330/2009*] WGS84 DATUM

Insert	the accompanying block, showing new reclamation area, works and buoyage, centred on:	1° 16'·008N., 103° 51'·652E.
	 Api Api	1° 16'·441N., 103° 52'·410E.

V
**REPRINT OF ADMIRALTY NOTICES TO MARINERS
 FOR DUAL BADGED CHARTS**

Chart 4040 [previous update 6553/2009] WGS84 DATUM




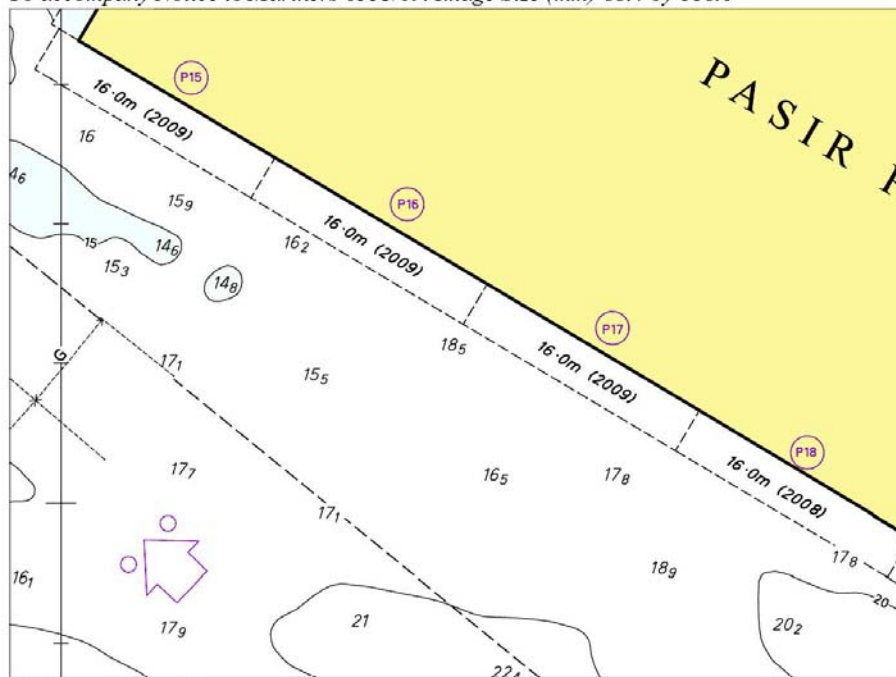
Insert	the accompanying block, showing amendments to the works and buoyage, centred on:	1° 15'·89N., 103° 47'·34E.
Delete		1° 16'·10N., 103° 51'·53E. 1° 16'·07N., 103° 51'·58E.

Chart 4041 [previous update 5770/2009] WGS84 DATUM

Insert	the accompanying block, showing amendments to works and buoyage, centred on:	1° 15'·80N., 103° 47'·59E.
	 Api Api	1° 16'·44N., 103° 52'·41E.
Delete		1° 16'·10N., 103° 51'·53E. 1° 16'·07N., 103° 51'·58E.

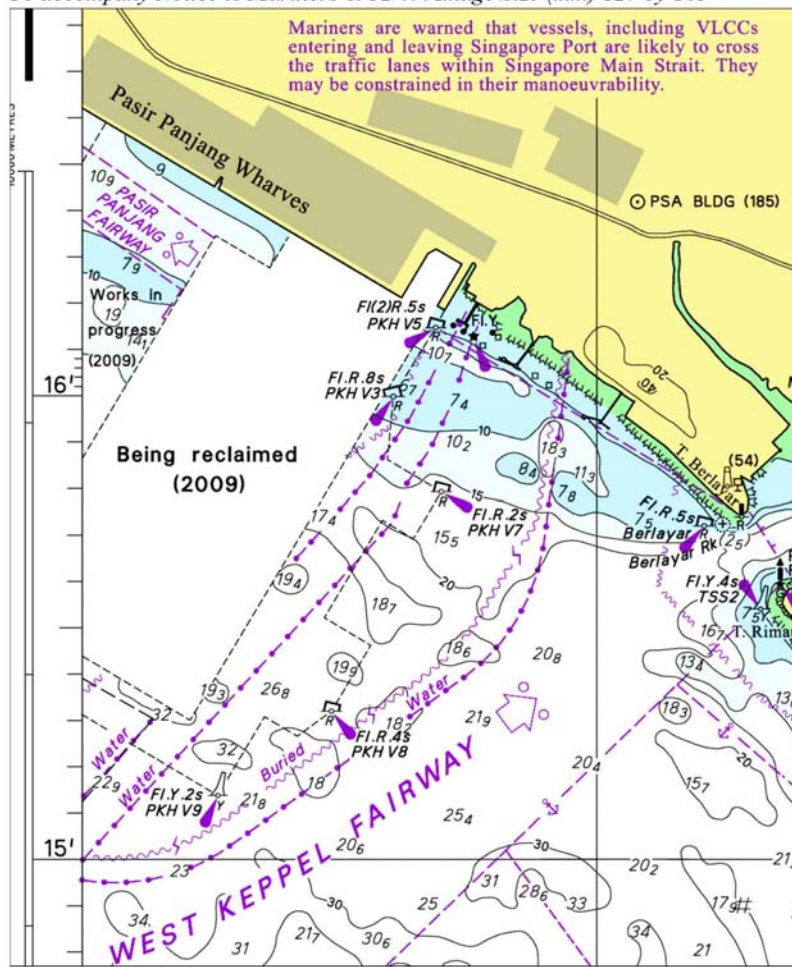
Updated to Admiralty Notices to Mariners Edition No. 53 of 2009 dated 31st December 2009.

To accompany Notice to Mariners 6553/09. Image Size (mm) 88.4 by 118.6



V
REPRINT OF ADMIRALTY NOTICES TO MARINERS
FOR DUAL BADGED CHARTS

To accompany Notice to Mariners 6932/09. Image Size (mm) 127 by 105



Block for Chart No 4041

SINGAPORE ELECTRONIC NAVIGATIONAL CHARTS (ENC) DISTRIBUTORS
Please approach any of the appointed distributors to purchase the Singapore ENC.

DISTRIBUTOR	ADDRESS	TELEPHONE/FAX NO./EMAIL/WEBSITE
DPM (Singapore) Pte Ltd	1 Maritime Square, #09-72 HarbourFront Centre, Singapore 099253	Tel. No.: +65 6270 4060 Fax No.: +65 6276 3858 Email: sales@dpsingapore.com.sg Website: http://www.dpsingapore.com.sg
Kelvin Hughes(S) Pte Ltd	8 Pandan Avenue #02-00, Singapore 609384	Tel. No.: +65 6545 9880 ext.24 Fax No.: +65 6545 8892 Email: hamzah.akhbar@khsing.com Website: http://www.kelvinhughes.co.uk
Maritime Information Systems (MARIS)	52, Telok Blangah Road #01-06, Telok Blangah Centre, Singapore 058809	Tel. No.: +65 6276 1472 Fax No.: +65 6276 1473 Email: support@maris.sg Website: http://www.maris.no
Maritime Information System AS (MARIS)	Danholmen 25, 3128 Notteroy, Norway	Tel. No.: +47 33 30 42 50 Fax No.: +47 33 30 42 51 Email: roar.moe@maris.no Website: http://www.maris.no
Motion Smith	15 Jalan Kilang Barat #08-01/05 Frontech Centre Singapore 159357	Tel. No.: +65 6220 5098 Fax No.: +65 6225 4902 Email: sales@motsmith.com Website: http://www.motsmith.com
Transas Marine Pacific Pte Ltd	750C Chai Chee Road, #04-07, Technopark@Chai Chee, Singapore 469003	Tel. No.: +65 6443 3061 Fax No.: +65 6443 3025 Email: dominic@transas.com.sg Website: http://www.transas.com.sg
Vector Services Pte Ltd	15 West Coast Highway, #02-14A Pasir Panjang Building Singapore 117861	Tel. No.: +65 6777 3602 Fax No.: +65 6777 9203 Email: kwchoy@pacific.net.sg
Marine Press of Canada	640 Rue St-Paul Ouest, Suite 300 Montreal (QC) Canada, H3C1L9	Tel. No.: (514) 866 8342 Fax No.: (514) 866 9050 Email : sales@marinepress.com Website: http://www.marinepress.com
HanseNautic GmbH Bade & Hornig, Eckardt & Messtorff	Herrengaben 31 D-20459 Hamburg, Germany	Tel. No.: +49 40 374 811-32 Fax No.: +49 40 366 400 Email: wilde@hansenautic.de Website : http://www.HanseNautic.com
ChartWorld GmbH	Ruhrstrasse 90, D-22761 Hamburg, Germany	Tel. No.: +49 40 853 58 6940 Fax No.: +49 40 853 58 6949 Email: sales@chartworld.com Website : http://www.sevencs.com
Japan Hydrographic Association Electronic Charts Division	Daiichi Sogo Bldg, 6F 1-6-6, Hanedakuko, Ota-ku, Tokyo 144-0041, Japan	Tel. No.: +81 3 5708 7093 Fax No.: +81 3 5708 7094 Email: enc-support@jha.jp Website: http://www.jha.jp

SINGAPORE ELECTRONIC NAVIGATIONAL CHARTS (ENC) DISTRIBUTORS
Please approach any of the appointed distributors to purchase the Singapore ENC.

DISTRIBUTOR	ADDRESS	TELEPHONE/FAX NO./EMAIL/WEBSITE
E_MLX Co. Ltd	Ssangyong Research No.2 Lab Sinseong-Dong 100 Yusong-Gu, Daejoen 305-804, Korea (ROK)	Tel. No.: +82 42 865 1893 Fax No.: +82 42 865 1884 Email: Jester-kim@emlx.co.kr
Korean Ocean Development Co. Ltd	2ND Fl, Dongbang Bldg, 25-4, 4 Ga Jungang-Dong, Jung-Gu, Busan, South Korea	Tel. No.: +82 514 66 0760 Fax No.: +82 514 65 9345 Email: sales@chartkorea.com Website: http://www.chartkorea.com
Jeppesen Norway A/S	P.O Box 212 , N-4379 Egersund, Norway	Tel No.: +47 514 64 700 Fax No: +47 514 64 701 Email: enc@c-map.no Website : http://www.c-map.no
PRIMAR STAVANGER	Lervigsveien 36, P.O Box 60, N-4001 Stavanger, Norway	Tel. No.: +47 51 93 9500 Fax No.: +47 51 93 9501 Email: sales@primar.org Website : http://www.primar-stavanger.org
United Kingdom Hydrographic Office	Admiralty Way, Taunton, Somerset TA1 2DN United Kingdom	Tel. No.: +44 (0)1823 337900 Fax No.: +44 (0)1823 284077 Emails: vargroup@ukho.gov.uk & christine.trickett@ukho.gov.uk Website: http://www.ukho.gov.uk

**Agents for the Maritime and Port Authority of Singapore
Nautical Charts and Publications**

Agent's Name : **DPM (Singapore) Pte Ltd**
Address : 1 Maritime Square #09-72, HarbourFront Centre,
Singapore 099253
Telephone : (65) 6270 4060
Fax No. : (65) 6276 3858
E-mail : sales@dpmsingapore.com.sg
Internet Web Site : http://www.dpmsingapore.com.sg

Agent's Name : **E.W. Liner Charts & Publications Pte Ltd**
Address : 102F, Pasir Panjang Road, #08-01, Citilink Warehouse Complex,
Singapore 118530
Telephone : (65) 6323 0773
Fax No. : (65) 6323 0775
E-mail : ewliner@singnet.com.sg
Internet Web Site : http://www.ewliner.com

Agent's Name : **Motion Smith**
Address : 15 Jalan Kilang Barat
#08-01/05 Frontech Centre,
Singapore 159357
Telephone : (65) 6220 5098
: (After office hours: 8163 9993)
Fax No. : (65) 6225 4902
E-mail : sales@motsmith.com
Internet Web Site : http://www.motsmith.com

HYDROGRAPHIC NOTE - Instructions

1. Mariners are requested to notify the Chief Hydrographer, Maritime and Port Authority of Singapore, when new or suspected dangers to navigation are discovered, changes are observed in aids to navigation or where corrections to nautical publications may be necessary. Reports, which cannot be confirmed or are lacking in certain details should not be withheld.
2. Any ambiguities of time, positioning and depth should be stressed and any firm expectation of being able to check the information provided on a following voyage should be mentioned.
3. Mariners using satellite position fixing systems, eg. GPS, should provide details of equipment and datum used (where applicable). Where bearings (true or magnetic) are taken visually or by radar to fix a position, it should include more than two objects in order to provide a check on its accuracy. A position may also be defined by bearing and distance from a conspicuous object eg. beacon, lighthouse etc.
4. The note should include a tracing or a digital image of the chart used and the details should be clearly marked.
5. Echo sounders frequently register greater depths than the advertised maximum depth for the equipment, eg. a trace appearing at 50 metres may be in fact be 550 metres or even 1050 metres for equipment whose maximum depth is 500 metres. Erroneous depths caused by 2nd transmission error can usually be recognised by the following:
 - (a) the tracing being weaker than normal for the depth registered,
 - (b) the trace appearing to pass through the transmission line,
 - (c) the feathery nature of the trace.
6. An acknowledgement of receipt will be sent. When a Notice to Mariners is issued, the sender's vessel or name is quoted as the source unless the same information is also received in foreign Notices to Mariners.
7. Reports of shoals, uncharted dangers and defects in aids to navigation may also be made to the appropriate Singapore Port Operations Control Centre on VHF Channels 10, 12, 14, 68 or 73.

HYDROGRAPHIC NOTE

To:

Chief Hydrographer
Hydrographic Department
Maritime and Port Authority of Singapore
460 Alexandra Road PSA Building #20-00
Singapore 119963

Tel : (65) 6375 1227
Fax : (65) 6278 7646
Email : hydrographic@mpa.gov.sg

Sender's Contact Details :

Date :

Name of Vessel :

Address of Sender :

Tel : Fax :

Email :

Nature of Observation :

General Location :

Subject :

Position : Lat. Long.

Charts Used :

Date & Time of Observation :

Details :

.....

.....

Attachment :

Equipment Used :

Type of Position Fixing : GPS / DGPS Others :

Type of Echo Sounder :

Name and Signature :

Ship's/Company's stamp :