



SINGAPOREAN NOTICES TO MARINERS

SECTION	CONTENT	Page
I	Index of Charts & Publications	1
II	New Publications	11
	Notices to Mariners and Chart Corrections	14
	Temporary and Preliminary Notices	16
III	Navigational Information	22
	Amendments to Publications	24
IV	Reprint of Radio Navigational Warnings	26
V	Reprint of Admiralty Notices to Mariners for Dual Badged Charts	27

The monthly Notices to Mariners contain corrective information affecting charts published by the Hydrographic Department, Maritime and Port Authority of Singapore. The information contained in these Notices should be updated on the charts affected. Notices under Section II apply only to the particular Singaporean Chart(s) indicated.

Mariners are requested to notify the Chief Hydrographer, Maritime and Port Authority of Singapore, immediately on the discovery of new dangers or suspected dangers to navigation and of changes or defects in aids to navigation. See Hydrographic Note on back page.

The monthly Singaporean Notices to Mariners can be accessed directly from the MPA website:
[http://www.mpa.gov.sg/sites/port_and_shipping/circulars_and_notices/singapore_notices_to_mariners\(ntm\).page](http://www.mpa.gov.sg/sites/port_and_shipping/circulars_and_notices/singapore_notices_to_mariners(ntm).page)

This service is offered free of charge.

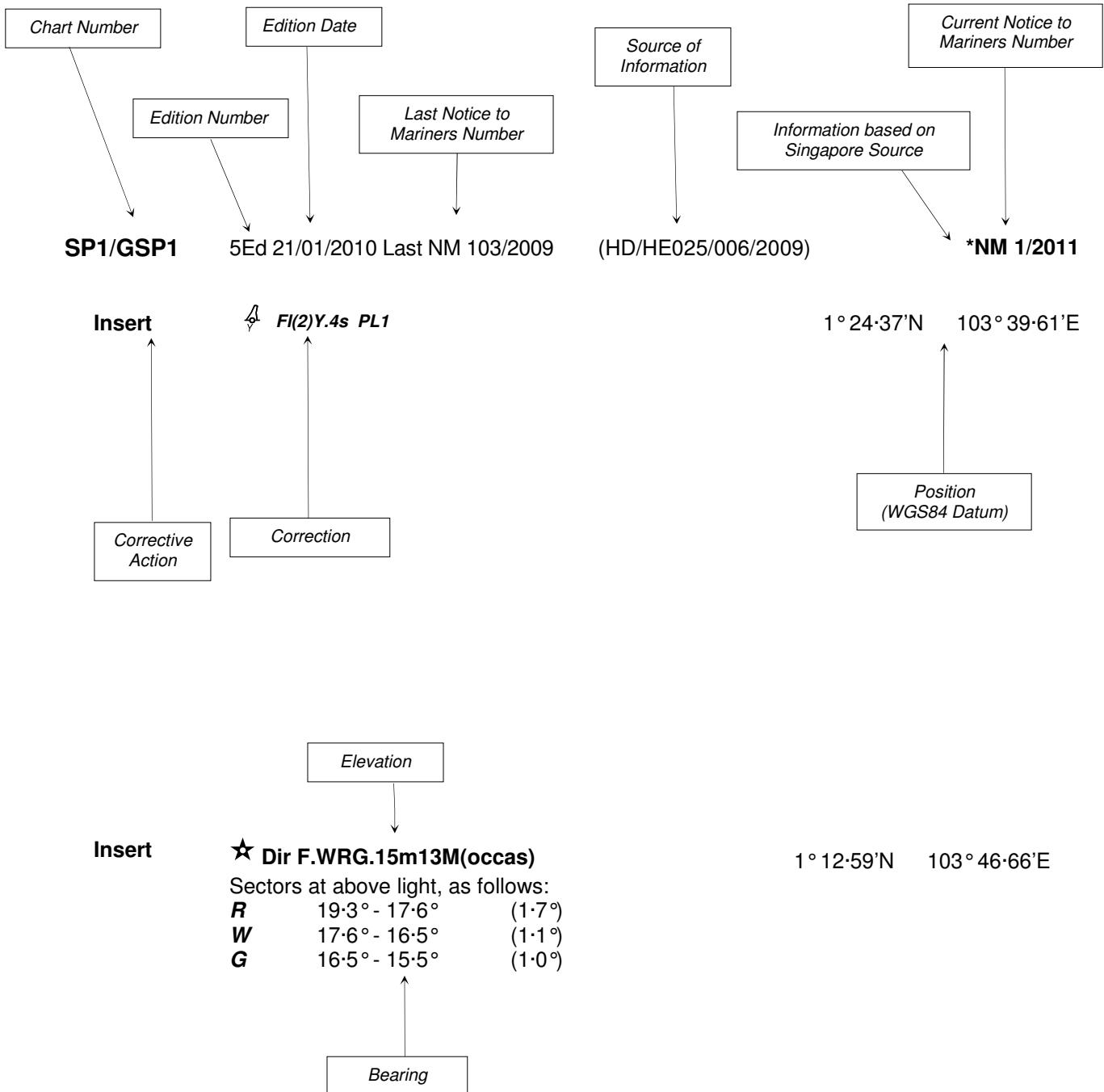
The Chief Hydrographer of
Maritime and Port Authority of Singapore
wishes all users of Singaporean and Dual Badged Charts

A HAPPY NEW YEAR
Wishing all a safe voyage in Year 2011

Hydrographic Department
Maritime and Port Authority of Singapore
460 Alexandra Road
PSA Building #20-00
Singapore 119963
Tel: (65) 6375 1227
Fax: (65) 6278 7646

EXPLANATION OF FORMAT

The elements of a typical chart correction are explained below.



Notes:

- a) Notice to Mariners number followed by:
T indicates a Temporary Notice (eg. ***NM 1T/2011**).
P indicates a Preliminary Notice (eg. ***NM 3P/2011**).
- b) Bearings are true reckoned clockwise from 000° to 359° ; those relating to lights are from seaward.
- c) Heights and elevations are above Mean High Water Springs.

I
INDEX OF CHARTS AND PUBLICATIONS

INDEX OF AFFECTED CHARTS

DESCRIPTION	NOTICE NO.	PAGE NO.
Index of Singaporean Charts	-	5
Index of Dual Badged Charts	-	7
Index of Singapore Electronic Navigational Chart (ENC)	-	10
New Publication "SINGAPORE TIDE TABLES YEAR 2011"	-	11
New Publication "CHART FOR SMALL CRAFT"	-	12
New Edition Singaporean Charts	-	12
Numerical Index to Notices to Mariners of 2010	*1	14
Singaporean Chart SP1/GSP1	*2, *3, 4	14
Singaporean Chart 202	4, *5	14
Singaporean Chart 500	4, 6	15
Singaporean Chart 501	*3, 4	15
Singaporean Chart 502	*2, *3	15
Singaporean Chart 503	*5	15
Temporary and Preliminary Notices	*7T, *8T, *9T, *10T, 11T, *12P	16 to 21
Port Marine Notices	*13	22
Straits of Malacca and Singapore Routeing System	*14	23
Singaporean Print-On-Demand (POD) Charts	*15	23
Amendments to Publications	*16	24 to 25
Reprint of Radio Navigational Warnings	-	26

*Denotes information are based on Singaporean source.

I
INDEX OF CHARTS AND PUBLICATIONS

INDEX OF AFFECTED CHARTS

DESCRIPTION	NOTICE NO.	PAGE NO.
Reprint of Admiralty Notices to Mariners for Dual Badged Charts	-	27 to 29
Singapore Electronic Navigational Chart (ENC) Distributors	-	30
Agents for the Maritime and Port Authority of Singapore Nautical Charts and Publications	-	31

*Denotes information are based on Singaporean source.

I
INDEX OF CHARTS AND PUBLICATIONS

INDEX OF NOTICES

NOTICE NO.	DESCRIPTION	PAGE NO.
-	Index of Singaporean Charts	5
-	Index of Dual Badged Charts	7
-	Index of Singapore Electronic Navigational Chart (ENC)	10
-	New Publication "SINGAPORE TIDE TABLES YEAR 2011"	11
-	New Publication "CHARTS FOR SMALL CRAFT"	12
-	New Edition Singaporean Charts	12
*1	Numerical Index to Notices to Mariners of 2010	14
*2, *3, 4	Singaporean Chart SP1/GSP1	14
4, *5	Singaporean Chart 202	14
4, 6	Singaporean Chart 500	15
*3, 4	Singaporean Chart 501	15
*2, *3	Singaporean Chart 502	15
*5	Singaporean Chart 503	15
*7T, *8T, *9T, *10T, 11T, *12P	Temporary and Preliminary Notices	16 to 21
*13	Port Marine Notices	22
*14	Straits of Malacca and Singapore Routeing System	23
*15	Singaporean Print-On-Demand (POD) Charts	23
*16	Amendments to Publications	24 to 25
-	Reprint of Radio Navigational Warnings	26
-	Reprint of Admiralty Notices to Mariners for Dual Badged Charts	27 to 29

* Denotes information are based on Singaporean source.

I
INDEX OF CHARTS AND PUBLICATIONS

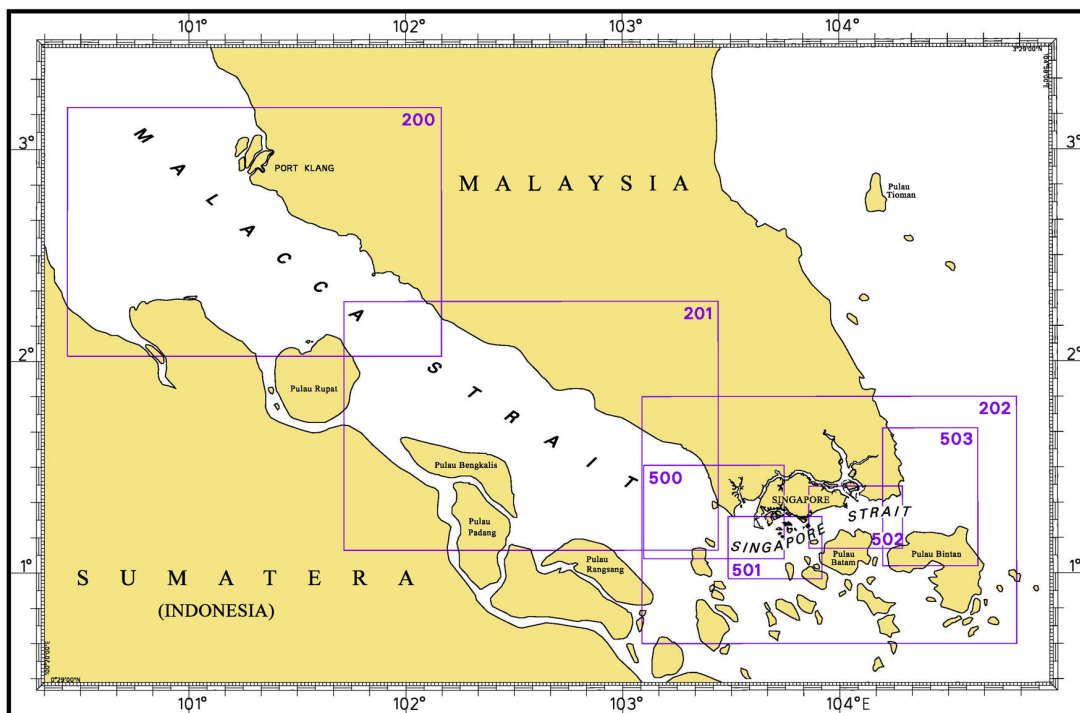
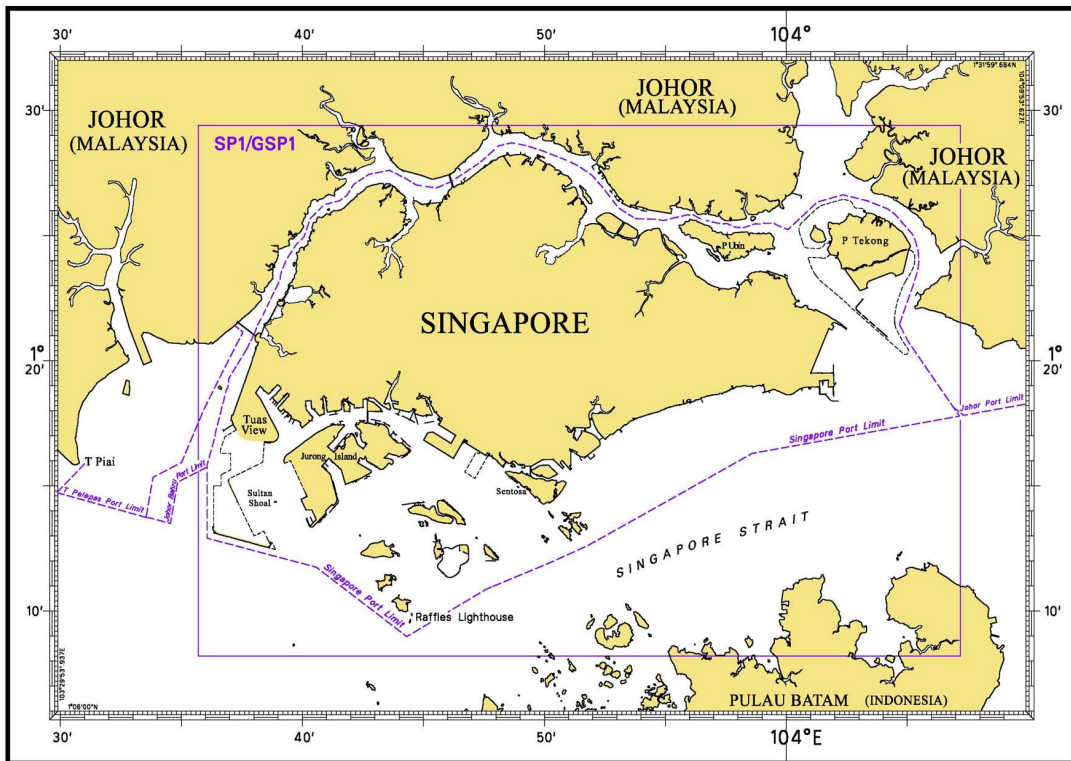
INDEX OF NOTICES

NOTICE NO.	DESCRIPTION	PAGE NO.
-	Singapore Electronic Navigational (ENC) Distributors	30
-	Agents for the Maritime and Port Authority of Singapore Charts and Publications	31

* Denotes information are based on Singaporean source.

I INDEX OF CHARTS AND PUBLICATIONS

INDEX OF SINGAPOREAN CHARTS



Notes:

Updated SINGAPOREAN Charts are available through our Print-On-Demand (POD) Chart Service. For more information, refer to Section III – Navigational Information and these charts can be purchased from our authorised Chart Agents:
DPM (Singapore) Pte Ltd, E.W. Liner Charts & Publications Pte Ltd and Motion Smith.

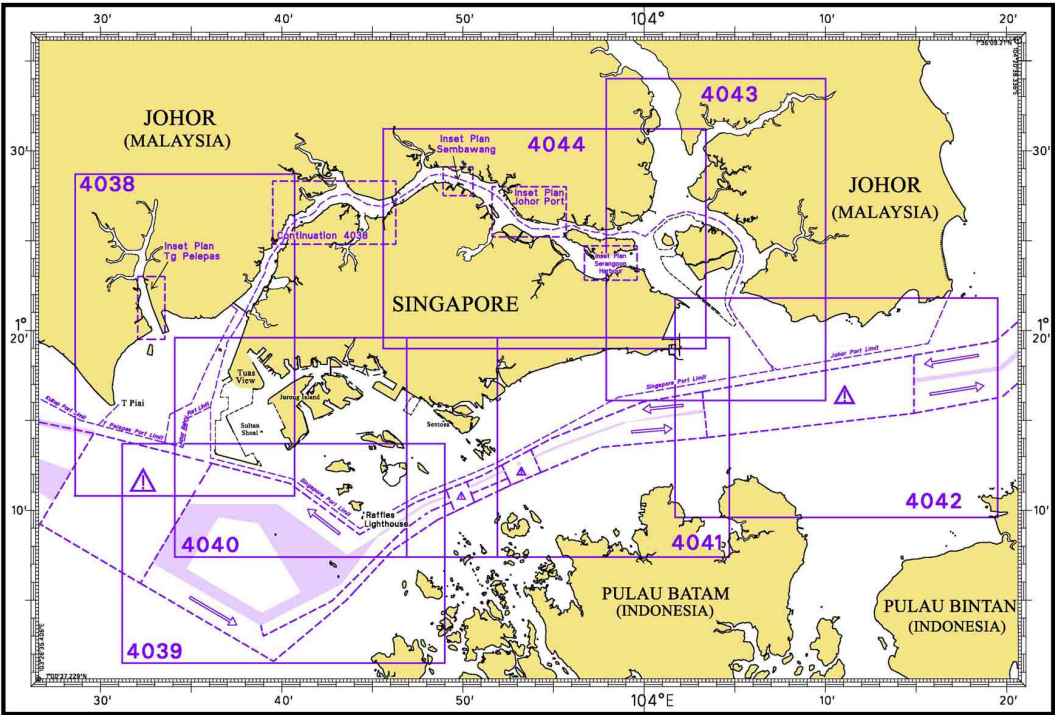
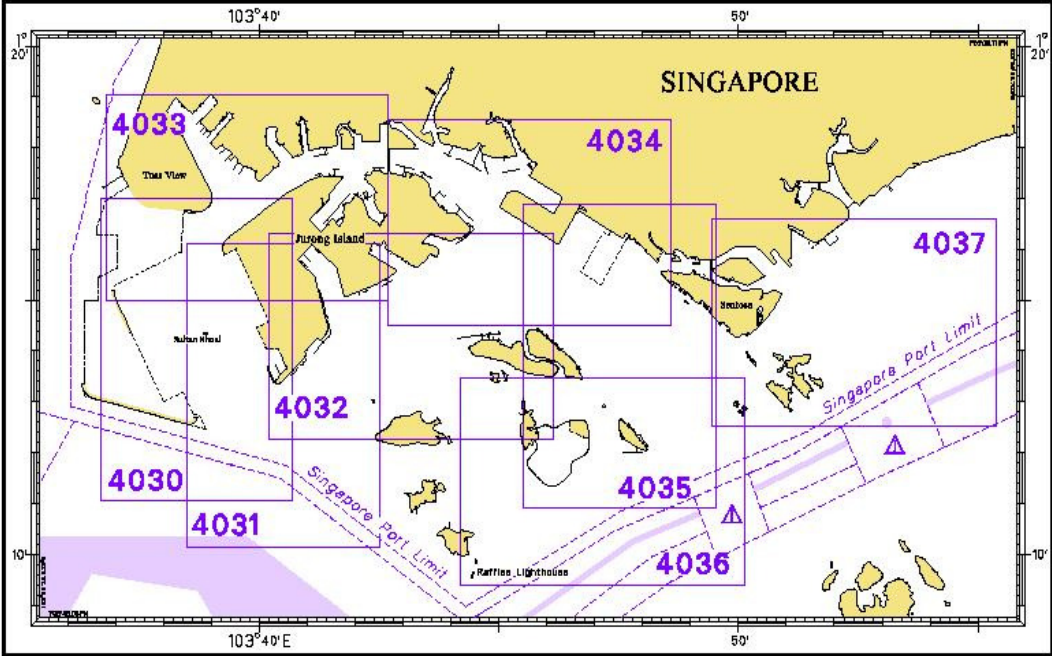
I
INDEX OF CHARTS AND PUBLICATIONS

SINGAPOREAN CHART CATALOGUE

Chart No.	Chart Title	Scale 1:	Date Published of Latest Edition
1	Symbols and Abbreviations used on Singaporean produced Nautical Charts	-	07/2001
Charts for Small Craft	Singapore Strait & Adjacent Waterways	Various	15/01/2009
SP1	Anchorage and Aids to Navigation	60 000	21/01/2010
GSP1	Anchorage and Aids to Navigation (with Area Reference)	60 000	21/01/2010
200	Malacca Strait - Port Klang to Tanjung Keling	200 000	30/11/2005
201	Malacca Strait - Tanjung Keling to Western Entrance of Singapore Strait	200 000	07/10/2010
202	Singapore Strait	200 000	24/09/2009
500	Malacca and Singapore Straits – Pulau Pisang to Raffles Lighthouse	75 000	07/10/2010
501	Singapore Strait – Western Part	50 000	24/09/2009
502	Singapore Strait - Eastern Part	50 000	25/09/2008
503	South China Sea - Eastern Approaches and Entrance to Singapore Strait	75 000	01/04/2010

I
INDEX OF CHARTS AND PUBLICATIONS

INDEX OF DUAL BADGED CHARTS



I
INDEX OF CHARTS AND PUBLICATIONS

DUAL BADGED CHART CATALOGUE

Chart No.	Chart Title	Scale 1:	Date Published of Latest Edition
4030	Port of Singapore West Jurong Anchorages and Temasek Fairway	10 000	25/03/2010
4031	Port of Singapore Western Approaches to Jurong Island	10 000	25/03/2010
4032	Port of Singapore Sinki Fairway	10 000	04/03/2010
4033	Port of Singapore Tuas Bay, West Jurong Channel and Pesek Basin	10 000	04/03/2010
4034	Port of Singapore East Jurong Channel, Pasir Panjang Terminal and West Keppel Fairway	10 000	30/09/2010
4035	Port of Singapore Western Anchorages, Jong Fairway and Cruise Bay	10 000	30/09/2010
4036	Port of Singapore Raffles Lighthouse to The Sisters	10 000	21/05/2009
4037	Port of Singapore Keppel Harbour, Tanjong Pagar Terminal and Approaches	10 000	21/05/2009
4038	Malaysia and Singapore Johor Strait – Western Part	30 000	05/08/2010
4039	Indonesia, Singapore and Malaysia Western Approaches to Main Strait	30 000	23/07/2009
4040	Singapore, Indonesia and Malaysia, Tuas View to Pulau Sakijang Bendera (S. John's Island)	30 000	05/08/2010
4041	Singapore and Indonesia, Pulau Sebarok to Changi	30 000	23/07/2009

I
INDEX OF CHARTS AND PUBLICATIONS

DUAL BADGED CHART CATALOGUE

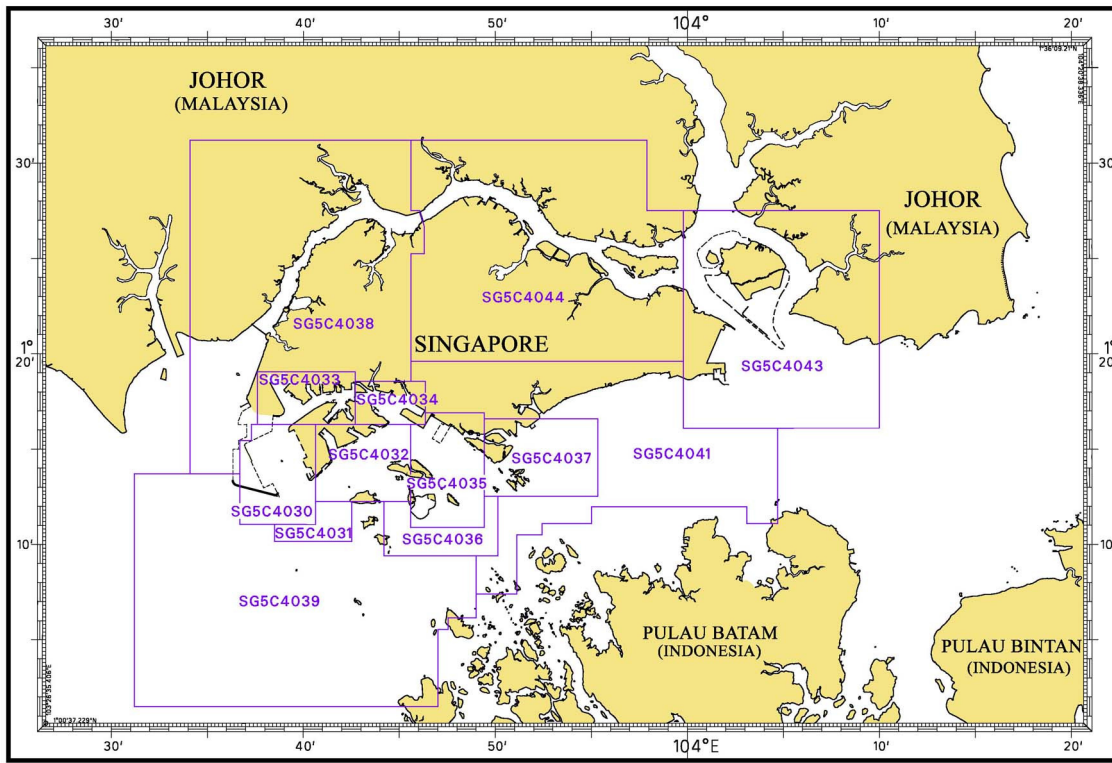
4042	Indonesia, Malaysia and Singapore, Changi to Pulau Mungging and Tanjung Buntan to Tanjung Tondang	30 000	24/07/2008
4043	Malaysia and Singapore Kuala Johor and Sungai Johor	30 000	29/07/2010
4044	Singapore and Malaysia Johor Strait - Eastern Part	30 000	29/07/2010

INDEX OF SINGAPOREAN PUBLICATIONS**HYDROGRAPHIC PUBLICATIONS**

Item	Title
1	Singapore Tide Tables Year 2011
2	Singapore Port Information 2010/2011

I INDEX OF CHARTS AND PUBLICATIONS

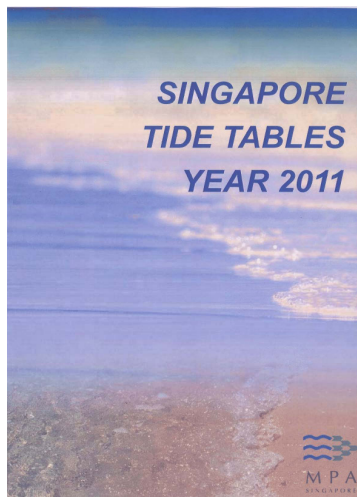
INDEX OF SINGAPORE ELECTRONIC NAVIGATIONAL CHART (ENC)



INDEX OF SINGAPORE ENC

ENC Name	ENC Title	Latitude	Longitude
SG5C4030	West Jurong Anchorages and Temasek Fairway	1°11·050'N 1°16·300'N	103°36·700'E 103°40·640'E
SG5C4031	Western Approaches to Jurong Island	1°10·150'N 1°12·250'N	103°38·500'E 103°42·530'E
SG5C4032	Sinki Fairway	1°12·250'N 1°16·300'N	103°40·640'E 103°45·580'E
SG5C4033	Tuas Bay, West Jurong Channel and Pesek Basin	1°16·300'N 1°19·050'N	103°37·600'E 103°42·700'E
SG5C4034	East Jurong Channel, Pasir Panjang Terminal and West Keppel Fairway	1°16·300'N 1°18·550'N	103°42·700'E 103°46·356'E
SG5C4035	Western Anchorages, Jong Fairway and Cruise Bay	1°10·900'N 1°16·900'N	103°45·580'E 103°49·425'E
SG5C4036	Raffles Lighthouse to The Sisters	1°09·400'N 1°12·520'N	103°44·200'E 103°50·130'E
SG5C4037	Keppel Harbour, Tanjong Pagar Terminal and Approaches	1°12·520'N 1°16·590'N	103°49·425'E 103°55·340'E
SG5C4038	Johor Strait – Western Part	1°13·700'N 1°31·200'N	103°34·100'E 103°46·300'E
SG5C4039	Western Approaches to Main Strait	1°01·500'N 1°13·700'N	103°31·200'E 103°49·000'E
SG5C4041	Pulau Sebarok to Changi	1°07·400'N 1°19·600'N	103°45·600'E 104°04·700'E
SG5C4043	Kuala Johor and Sungai Johor	1°16·100'N 1°27·500'N	103°59·800'E 104°10·000'E
SG5C4044	Johor Strait – Eastern Part	1°19·600'N 1°31·200'N	103°45·600'E 103°59·800'E

II NEW PUBLICATIONS



SINGAPORE TIDE TABLES YEAR 2011

Summary of Publication

- (a) This 239-page book contains Tidal Height and Tidal Stream Predictions covering stations in Singapore Port waters and selected stations along the Malacca and Singapore Straits.

The predictions consist of 5 main segments to facilitate easy reference:

- High and Low Water Predictions
 - Hourly Tidal Height Predictions
 - Hourly Tidal Stream Predictions
 - Maximum and Slack Tidal Stream Predictions
 - Malacca Strait – High and Low Water Predictions
- (b) The presentation of the predictions is enhanced with colour codes so as to differentiate the various states of tidal heights, eg falling or rising tide and tidal stream directions. Moon phases, eg full and new moon, are also included in each calendar month to complement the prediction values.
- (c) The tidal heights are given in metres above Chart Datum (CD). The CD is the datum of soundings shown on the Singaporean Charts and Dual Badged Charts covering the area. A table showing the various tidal levels eg. Mean High Water Springs, Mean Low Water Springs etc, at various stations with reference to CD is also included in this publication.

To Whom Will It Be Useful?

Mariners, shipping community, port users and other interested users.

Frequency of Publication

Annually.

Cost of Publication

To be advised by Chart Agents.

Order Enquires:

This publication is available from the following Chart Agents:

- 1) DPM (Singapore) Pte Ltd
- 2) E.W. Liner Charts & Publications Pte Ltd
- 3) Motion Smith

(Please refer to Page 31 for details.)

II NEW PUBLICATIONS

NEW EDITION CHART TO BE PUBLISHED ON 20TH JANUARY 2011

Chart Number	:	CHARTS FOR SMALL CRAFT
Title	:	Singapore Strait and Adjacent Waterways – 2011/2012 Edition
Date Published	:	20 th January 2011
Size of chart	:	600 x 400 mm
Remarks	:	The publication contains 19 Small Craft Charts and related nautical information bound into an atlas measuring 600 x 400 mm. The pages are laminated to prevent damage from seawater.

The symbols, abbreviations and term depicted on these charts are consistent with the International Hydrographic Organization Chart Standards and Specifications.

Symbols for the locations of pleasure craft facilities and areas for sea sport activities such as board sailing, dinghy sailing, keelboat sailing, power-boating and water-skiing are also included and highlighted in red.

Chart of the same publication 2009/2010 Edition published on 15th January 2009 would be superseded.

NEW EDITION SINGAPOREAN CHARTS TO BE PUBLISHED ON 27TH JANUARY 2011

Chart Number	:	SP1
Title	:	Anchorage and Aids to Navigation
Coverage	:	Lat 1° 08-20' N 1° 29-40' N Long 103° 35-70' E 104° 07-20' E
Scale	:	1: 60 000
Date Published	:	27 th January 2011
Size of chart	:	973.9 x 651.2 mm
Remarks	:	This new edition includes: - <ul style="list-style-type: none"> • New topography at Pulau Punggol Timor, Pulau Punggol Barat and Pulau Serangoon. • Reclamation at Ayer Chawan Basin and Marina South. • Pulau Tekong reclamation area. • Pasir Panjang reclamation area. • Submarine cables routes. • Depth contours covering the entire chart.

This new edition supersedes the earlier edition published on 21st January 2010.

II NEW PUBLICATIONS

NEW EDITION SINGAPOREAN CHARTS TO BE PUBLISHED ON 27TH JANUARY 2011


Chart Number	:	GSP1
Title	:	Anchorage and Aids to Navigation (with area reference)
Coverage	:	Lat 1° 08·20' N 1° 29·40' N Long 103° 35·70' E 104° 07·20' E
Scale	:	1: 60 000
Date Published	:	27 th January 2011
Size of chart	:	973.9 x 651.2 mm
Remarks	:	This new edition includes: - <ul style="list-style-type: none">• New topography at Pulau Punggol Timor, Pulau Punggol Barat and Pulau Serangoon.• Reclamation at Ayer Chawan Basin and Marina South.• Pulau Tekong reclamation area.• Pasir Panjang reclamation area.• Submarine cables routes.• Depth contours covering the entire chart.


This new edition supersedes the earlier edition published on 21st January 2010.

II
NOTICES TO MARINERS AND CHART CORRECTIONS

***(NM 1/2011) NUMERICAL INDEX TO NOTICES TO MARINERS OF 2010 (1 TO 111)**

CHART NO.	PUBLISHED	YEAR	NOTICES NO.
SP1, GSP1	5 Ed 21/01/10	2010	19-20-21-31-32-33-41-45-46-53-54-55-56-57-74-75-76-77-87-88-96-97
200	2 Ed 30/11/05	2010	3-11-22-78-79-89
201	4 Ed 7/10/10	2010	104-105
202	6 Ed 24/09/09	2010	12-23-36-37-57-58-69-80-81-82-105
500	6 Ed 7/10/10	2010	105
501	5 Ed 24/09/09	2010	32-33-36-96-98-105
502	4 Ed 25/09/08	2010	12-31-32-33-59-90-98
503	4 Ed 1/04/10	2010	47-58

GSP1/SP1	5 Ed 21/1/10 Last NM 97/2010	(Job No. 181N/2008)	*NM 2/2011
Insert	 Obstn	1°17'96"N	103°56'19"E
		(Hydrographic Dept. MPA)	*NM 3/2011
Insert	symbol Racon with legend ' AIS ' at Outer Shoal Beacon symbol Racon with legend ' AIS ' at Sakijang Beacon	1°15'02"N 1°13'31"N	103°51'81"E 103°51'28"E
		(IMO SN.1/Circ.238/Rev.1 dated 16 th November 2010)	NM 4/2011
Delete	note on ' <i>Nipa Transit Anchorage</i> ' centred on legend ' <i>(see Note)</i> ' centred on	1°26'78"N 1°08'59"N	103°56'35"E 103°37'32"E

202	6 Ed 24/9/09 Last NM 105/2010	(Job No. 137N/2010)	*NM 5/2011
Insert	 Mast (5)	1°26'10"N	104°24'41"E
		(IMO SN.1/Circ.238/Rev.1 dated 16 th November 2010)	NM 4/2011
Delete	note on ' <i>Nipa Transit Anchorage</i> ' centred on legend ' <i>(see Note)</i> ' centred on	1°48'27"N 1°06'70"N	103°18'10"E 103°37'70"E

II
NOTICES TO MARINERS AND CHART CORRECTIONS

500	6 Ed 7/10/10 Last NM 105/2010	(Malacca Strait Council)		NM 6/2011
Substitute	light character Fl.3s16m16M for Fl.3s16m13M		1°15-52'N 103°30-57'E	
		(IMO SN.1/Circ.238/Rev.1 dated 16 th November 2010)		NM 4/2011
Delete	note on ' <i>Nipa Transit Anchorage</i> ' centred on		1°29-85'N 103°38-05'E	
	legend ' <i>(see Note)</i> ' centred on		1°06-95'N 103°37-73'E	
<hr/>				
501	5 Ed 24/9/09 Last NM 105/2010	(Hydrographic Dept. MPA)		*NM 3/2011
Insert	symbol Racon with legend ' AIS ' at Outer Shoal Beacon		1°15-02'N 103°51-81'E	
	symbol Racon with legend ' AIS ' at Sakijang Beacon		1°13-31'N 103°51-28'E	
		(IMO SN.1/Circ.238/Rev.1 dated 16 th November 2010)		NM 4/2011
Delete	note on ' <i>Nipa Transit Anchorage</i> ' centred on		1°00-75'N 103°51-13'E	
	legend ' <i>(see Note)</i> ' centred on		1°06-90'N 103°38-00'E	
<hr/>				
502	4 Ed 25/09/08 Last NM 98/2010	(Job No. 181N/2008)		NM 2/2011
Insert	 Obstn		1°17-96'N 103°56-19'E	
		(Hydrographic Dept. MPA)		*NM 3/2011
Insert	symbol Racon with legend ' AIS ' at Outer Shoal Beacon		1°15-02'N 103°51-81'E	
	symbol Racon with legend ' AIS ' at Sakijang Beacon		1°13-31'N 103°51-28'E	
<hr/>				
503	4 Ed 1/04/10 Last NM 58/2010	(Job No. 137N/2010)		*NM 5/2011
Insert	 Mast (5)		1°26-10'N 104°24-41'E	
<hr/>				

II TEMPORARY AND PRELIMINARY NOTICES

*(NM 7T/2011) DREDGING IN THE WEST BOUND LANE OF THE TRAFFIC SEPARATION SCHEME IN THE SINGAPORE STRAIT.

Purpose

Mariners navigating in the Singapore Strait are hereby informed that dredging operations will be carried out in the westbound lane of the Traffic Separation Scheme.

Date

With effect from Dec 2009 until Nov 2011 (24 months).

Duration

24 hours a day, seven days a week with effect from Dec 2009.

Working Area

Within an area bounded by the following coordinates from Singapore Port Limit and the area within the westbound lane of the Traffic Separation Scheme (please see chart attached):

WGS 84 Datum		
Points	Lat. (N)	Long. (E)
1	1°15.148'	103°58.017'
2	1°15.911'	103°59.926'
3	1°16.106'	104°01.019'
4	1°16.217'	104°01.019'
5	1°16.321'	104°01.630'
6	1°16.258'	104°01.656'
7	1°15.902'	104°00.796'
8	1°15.625'	104°00.126'
9	1°15.046'	103°58.675'
10	1°14.838'	103°58.145'

Vessels

Vessels involved in the operations will display the appropriate day and night signals and will stand by on VHF Ch 14 and 12 and shall follow any traffic information given by Vessel Traffic Information Service (VTIS).

Navigational Broadcast

Navigational warning broadcast will be promulgated by VTIS on VHF CH 09 and NAVTEX to inform vessels of the dredging operation. Mariners are to maintain a listening watch for the above safety information.

Caution

Mariners are advised to:

- (a) Navigate with caution and proceed at slow speed when approaching the area; and
- (b) Keep well clear of the working vessels.

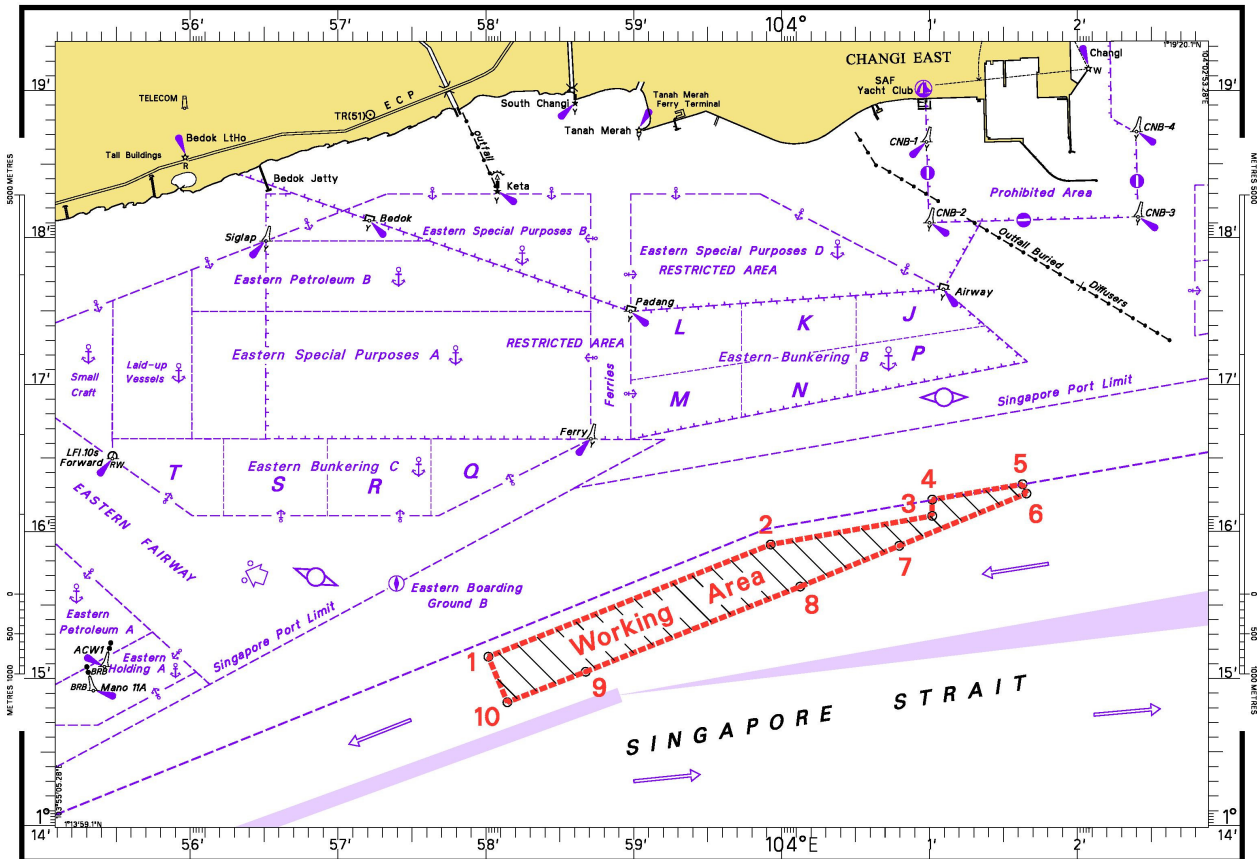
Charts affected: SP1/GSP1, 202, 502 & 4041

Source: PENTA-OCEAN/TOA CORPORATION/McCONNEL DOWELL JOINT VENTURE
HD/DB67/011/2009

(This is a repetition of Notice No. *61T/2010)

II TEMPORARY AND PRELIMINARY NOTICES

DREDGING IN THE WEST BOUND LANE OF THE TRAFFIC SEPARATION SCHEME IN THE SINGAPORE STRAIT



***(NM 8T/2011) DREDGING SOUTH OF THE SINGAPORE PORT LIMIT AND IN THE WEST BOUND LANE OF THE TRAFFIC SEPARATION SCHEME IN THE SINGAPORE STRAIT**

Purpose

Mariners navigating in the Singapore Strait are hereby informed that dredging operations will be carried out south of the Singapore Port Limit and in the westbound lane of the Traffic Separation Scheme.

Date

With effect from 17 Dec 2007 until 17 Dec 2011 (48 months).

Duration

24 hours a day, seven days a week with effect from 10 April 2008. On going dredging works will be carried out during daylight hours prior to 10 April 2008.

Working Area

Within an area bounded by the following coordinates south of the Singapore Port Limit and in the area within the westbound lane of the Traffic Separation Scheme (please see chart attached):

WGS 84 Datum		
Points	Lat. (N)	Long. (E)
1	1°15.827'	103°57.737'
2	1°14.865'	103°58.134'
3	1°13.298'	103°54.401'
4	1°13.884'	103°54.131'

II TEMPORARY AND PRELIMINARY NOTICES

Vessels

Vessels involved in the operations will display the appropriate day and night signals and will stand by on VHF Ch 14 and 12 and shall follow any traffic information given by Vessel Traffic Information Service (VTIS).

Navigational Broadcast

Navigational warning broadcast will be promulgated by VTIS on VHF CH 09 and NAVTEX to inform vessels of the dredging operation. Mariners are to maintain a listening watch for the above safety information.

Caution

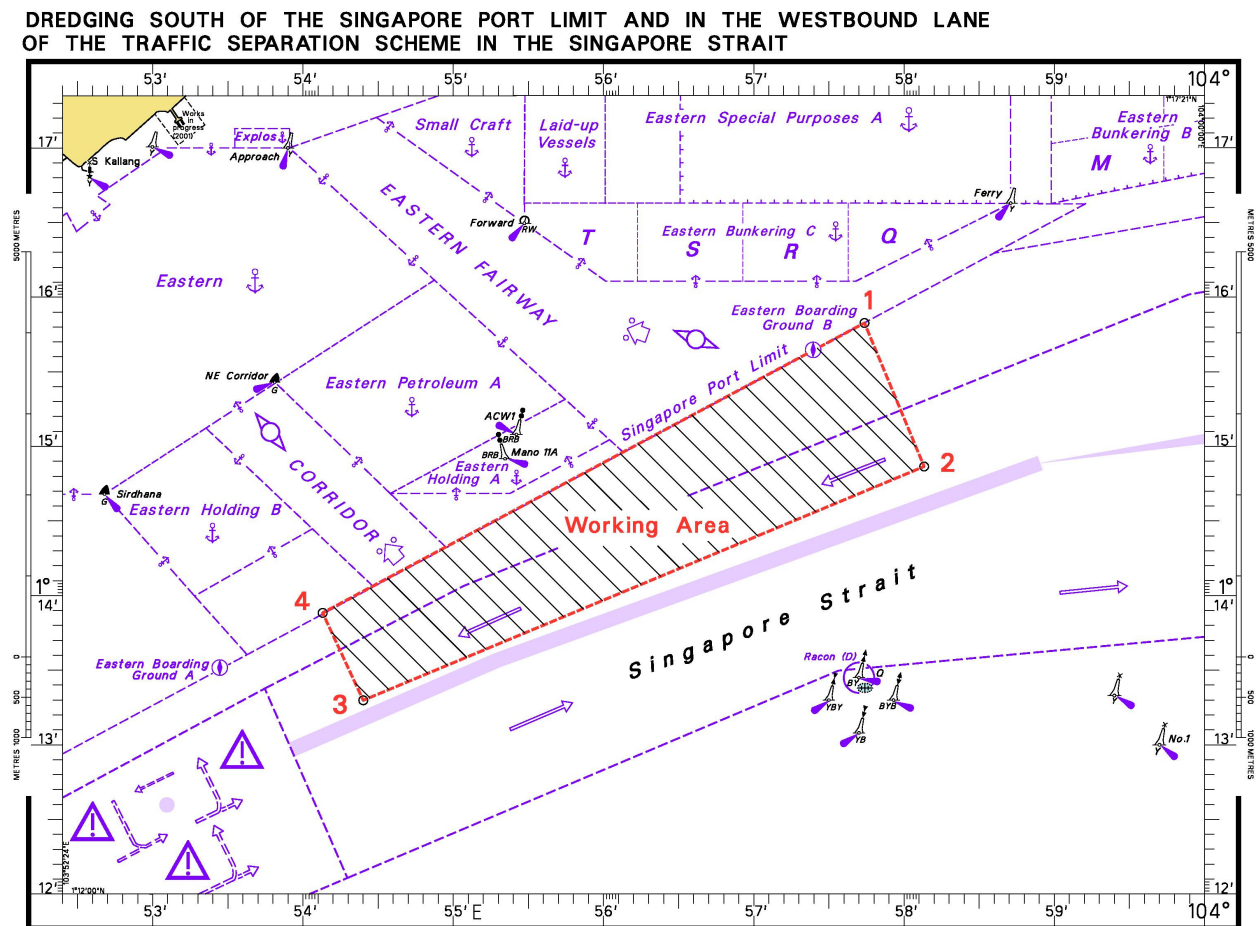
Mariners are advised to:

- (a) Navigate with caution and proceed at a safe speed when approaching the area; and
- (b) Keep well clear of the working vessels.

Charts affected: SP1/GSP1, 202, 501, 502, 4037 & 4041

Source: HD/DB67/010/2008

(This is a repetition of Notice No. *62T/2010)



II

TEMPORARY AND PRELIMINARY NOTICES
DREDGING IN THE WEST BOUND LANE OF THE TRAFFIC SEPARATION
SCHEME IN THE SINGAPORE STRAIT

*(NM 9T/2011)

Purpose

Dredging operations will be carried out in the westbound lane of the Traffic Separation Scheme.

Date

1st October 2010 until 1st December 2012 (26 months).

Duration

24 hours operations daily with effect 1st October 2010.

Working Area

West bound lane of the Traffic Separation Scheme, within an area bounded by the following co-ordinates (please see chart attached):

WGS 84 Datum		
Points	Lat. (N)	Long. (E)
1	1°14.897'	103°58.121'
2	1°16.217'	104°01.630'
3	1°16.097'	104°01.674'
4	1°14.684'	103°58.200'

Vessels

Vessels involved in the operations will display the appropriate day / night signals and will maintain listening watch on VHF Ch 12 and VHF Ch 14.

Navigational Broadcast

Navigational warning broadcast will be promulgated by (VTIS) on VHF CH 09 and NAVTEX to inform vessels of the dredging operation. Mariners are to maintain a listening watch for the above safety information.

Caution

Mariners are advised to:

- (a) Navigate with caution and proceed at safe speed when approaching the area; and
- (b) Keep well clear of the working vessels.

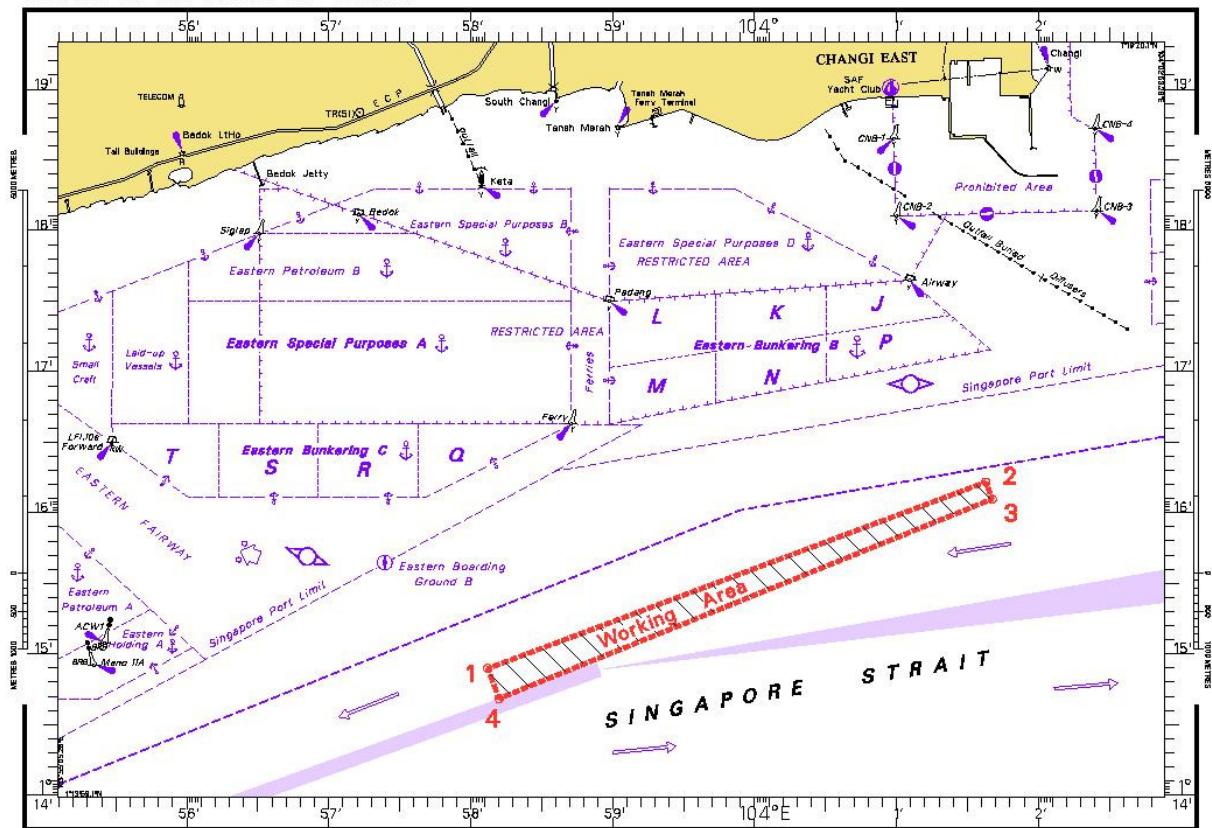
Charts affected: SP1/GSP1, 202, 502 & 4041

Source: PENTA-OCEAN/KOON/HYUNDAI/VAN OORD JOINT VENTURE
 HD/DB67/12/2010

(This is a repetition of Notice No.*91T/2010)

II TEMPORARY AND PRELIMINARY NOTICES

DREDGING IN THE WEST BOUND LANE OF THE TRAFFIC SEPARATION SCHEME IN THE SINGAPORE STRAIT



*(NM 10T/2011) TEMPORARY RELOCATION OF SERAYA BUOY

- Remark :**
1. Seraya buoy is temporarily relocated from position 1°16'741'N 103°44'861'E to position 1°16'739'N 103°44'861'E on 9th December 2010. The light character will remain unchanged.
 2. The relocation of the Seraya buoy is due to the undergoing dredging works off Pasir Panjang Terminal at East Jurong Fairway.
 3. Refer related Port Marine Notice No. 162/2010 for the information of the dredging works.

Date : With effect from 9th December 2010.

Charts affected : SP1/GSP1, 4034 and 4040.

Source : MPA Hydrographic Department.

(NM 11T/2011) NEW WRECK "MT POLAI"

1. Mariners are advised that vessel "MT Polai" sank at approximate position 1°17'680'N 104°10'680'E.
2. Mariners are advised to navigate with extreme caution when in the vicinity.

Charts affected: 202, 502, 4042 and 4043

Source: Peninsular Malaysia Marine Department Notice to Mariners No. 95T/2010

II
TEMPORARY AND PRELIMINARY NOTICES

***(NM 12P/2011) INSTALLATION OF NEW BANYAN BEACON**

- Remark :**
1. A new buoyant beacon will be installed at approximate position 1°13'346"N 103°41'585"E. The isolated danger beacon will have a double sphere topmark on a black red black tubular tower pivoted at base. The light character will be Fl(2)W10s. It will be fitted with Radar Reflector and Automatic Identification System (AIS).
 2. The isolated danger buoy (1°13'331'N 103°41'614'E) will be withdrawn on the same day.

Date : December 2010.

Charts affected : SP1/GSP1, 4031, 4032, 4039 and 4040

Source : MPA Hydrographic Department.
(This is a repetition of Notice No. *106P/2010)

III NAVIGATIONAL INFORMATION

*(NM 13/2011) PORT MARINE NOTICES

The following PMNs have been shortlisted, as they would be of particular interest to mariners.

These notices can be accessed directly from MPA website:

http://www.mpa.gov.sg/sites/port_and_shipping/circulars_and_notices/port_marine_notices.page

PMN No.	Subject
81/2010	Construction of jetties at Banyan Basin.
82/2010	Marine Construction works off Marina Barrage.
92/2010	Reclamation of Jurong Island Phase 4 and Tuas View Extension.
97/2010	Construction of Container Berth and Stacking Yard on Jurong Island.
102/2010	Underwater Drilling and Blasting works at Pasir Panjang Fairway.
103/2010	Reclamation at Ayer Chawan Basin, Jurong Island.
106/2010	Construction of Lighter Wharf and ancilliary facilities at Marina South.
107/2010	Construction of International Cruise Terminal.
110/2010	Construction works at Sembawang Shipyard.
114/2010	Construction works at Loyang Offshore Base.
120/2010	Construction works and shore restoration at Pulau Tekong.
126/2010	Construction of wharf at Tuas View.
127/2010	Construction of Sentosa Boardwalk..
129/2010	Installation of Silt Barricade off Pasir Panjang Ferry Terminal.
132/2010	Reclamation work at Tuas View extension.
136/2010	Dredging works at East Keppel Fairway.
140/2010	Reclamation of Jurong Island Phase 4.
142/2010	Construction of Storage Terminal / Jetty on Jurong Island.
143/2010	Construction of 15,000 DWT Coal/Biomass Handling Jetty on Jurong Island.
149/2010	Construction of sea wall at Marina Wharf.
152/2010	Reclamation at Pulau Tekong.
157/2010	Temporary Staging Ground at Sentosa.
160/2010	Reclamation at Pasir Panjang Terminal and Pasir Panjang Wharves.

III NAVIGATIONAL INFORMATION

PORT MARINE NOTICES (continued)

- 162/2010 Dredging works off Pasir Panjang Terminal at East Jurong Fairway.
- 165/2010 Construction of SLNG Terminal at Jurong Island.
- 166/2010 Soil investigation works off Tuas View.
-

*(NM 14/2011) STRAITS OF MALACCA AND SINGAPORE ROUTEING SYSTEM

Information concerning schemes shown on Singaporean Charts.
(Former NM 1/9/2010 is cancelled)

1. The information concerning the Straits of Malacca and Singapore Routeing System are charted in the Singaporean Charts 200, 201, 202, 500, 501, 502, 503 and Dual Badged Charts 4038, 4039, 4040, 4041, 4042 and 4043. All positions are referred to World Geodetic System 1984 (WGS 84) datum.
 2. The description of the Traffic Separation Scheme and the rules for vessels navigating through the Straits of Malacca and Singapore are published in the Singapore Port Information 2010/2011.
-

*(NM 15/2011) SINGAPOREAN PRINT-ON-DEMAND (POD) CHARTS

Print-On-Demand (POD) Charts are the most up-to-date paper nautical charts printed for navigational use. These nautical charts are produced in accordance with the International Hydrographic Organisation (IHO) charting specifications. These official nautical charts are continually updated to the latest Notices to Mariners before they are printed and sold to users.

These POD Charts include SP1/GSP1, 200, 201, 202, 500, 501, 502 and 503.

BENEFITS TO OUR CUSTOMERS

Convenience

Customers need not make numerous hand corrections to the nautical charts before use. In addition the updated POD Charts are more accurate and reliable than offset printed charts with hand corrections.

Clarity

Clarity in the presentation of updated information as compared to lithographic printed charts, where in some cases there are several overlapping corrections over existing information.

Coverage

The POD Charts cover the Malacca and Singapore Straits, from One Fathom Bank to Horsburgh Lighthouse.

III AMENDMENTS TO PUBLICATIONS

***(NM 16/2011) UPDATING OF PUBLICATION "SINGAPORE PORT INFORMATION 2010/2011"**

1. Page 127

**CHARACTERISTICS OF AIDS TO NAVIGATION
EASTERN ROADS**

Insert the following:

Name of Beacon/Buoy	Position	
	Lat. N	Long. E
	Delete	Insert
Bedok Buoy	01 15.086 103 55.416	01 18.113 103 57.241

Source: Navigational Aids Section, MPA

2. Page 138 – Item 1

**WHARVES AND BERTHS
TANJONG PAGAR TERMINAL (PSA SINGAPORE TERMINALS) (1°16.0'N, 103°51.0'E)**

Insert the following:

Berth	Depth Alongside (Year Surveyed)	
	Delete	Insert
T1	13.6m (2009)	13.4m (2010)
T3	13.6m (2009)	13.6m (2010)
T4	11.0m (2008)	11.0m (2010)
T5	15.3m (2009)	14.7m (2010)
T6	13.6m (2009)	13.4m (2010)

Source: HD/HY/B00103310 and B00103410

3. Page 139 – Item 2

KEPPEL TERMINAL (PSA SINGAPORE TERMINALS) (1°16.0'N, 103°50.0'E)

Insert the following:

Berth	Depth Alongside (Year Surveyed)	
	Delete	Insert
K11	14.2m (2009)	14.2m (2010)

Source: HD/HY/B00103310

III
AMENDMENTS TO PUBLICATIONS

4. Page 142 – Item 5

WHARVES AND BERTHS

SEMBAWANG WHARVES (PSA SINGAPORE TERMINALS) (1°27.7'N, 103°50.1'E)

Insert the following:

Berth	Depth Alongside (Year Surveyed)	
	Delete	Insert
S1	11.6m (2005)	11.6m (2010)
S2	10.7m (2005)	10.7m (2010)
S3	9.5m(2005)	9.1m (2010)
S4	9.4m (2005)	9.0m (2010)
S5	9.2m (2005)	8.6m (2010)
S6	10.7m (2005)	10.6m (2010)
S7	12.0m (2005)	11.5m (2010)

Source: HD/HY/M00105410

5. Page 150 – Item 22

JURONG ISLAND (OILTANKING SINGAPORE LTD) (1°16.8'N, 103°44.1'E)

Insert the following:

Berth	Depth Alongside (Year Surveyed)	
	Delete	Insert
MJ18	16.0m (2006)	16.3m (2010)
MJ19	14.8m (2006)	15.2m (2010)
MJ20	15.4m (2007)	15.4m (2010)
MJ21	13.7m (2007)	13.7m (2010)

Source: HD/HY/H00101710

6. Page 154 – Item 38

PULAU BUSING {TANKSTORE PTE LTD (OTS)} (1°14.4'N, 103°44.7'E)

Insert the following:

Berth	Depth Alongside (Year Surveyed)	
	Delete	Insert
OTS9	18.1m (2007)	17.5m (2010)
OTS10	16.2m (2007)	15.9m (2010)

Source: HD/HY/F00104310

IV
REPRINT OF RADIO NAVIGATIONAL WARNINGS

TT173 (AMENDED 200700UTC JUL 2010)

VESSELS IN EAST JOHOR STRAIT ARE ADVISED TO NAVIGATE WITH CAUTION WHEN NEAR THE PROJECT AREAS OFF PULAU TEKONG, CHANGI AND MALANG PAPAN AS SHALLOW WATER AREAS EXIST. VESSELS ARE ADVISED TO KEEP LOOKOUT FOR TUGS AND BARGES NAVIGATING NEAR THE PROJECT AREAS AND PASSENGER FERRIES CROSSING BETWEEN CHANGI AND PULAU TEKONG AND VICINITY OF PASIR GUDANG.

TT619

DREDGER QUEEN OF PENTA OCEAN IS CONDUCTING DREDGING OPERATIONS IN POSITIONS BOUNDED BY COORDINATES:

01°15.827' N 103°57.737' E

01°14.865' N 103°58.134' E

01°13.298' N 103°54.401' E

01°13.884' N 103°54.131' E

TT753

A SMALL WOODEN CARGO BOAT 10M IN LENGTH SUNK AT 01°15.73'N 103°32.10'E.

TT884

SALVAGE OPS UNDERWAY IN 01°13.40'N 103°57.75'E. ALL SHIPS ARE REQUESTED TO GIVE A WIDE BERTH OF AT LEAST 5 CABLES WHEN PASSING THE AREA.

TT886

SAFE WATER MARK LFL.10S(RW) MARKED THE ENTRANCE INTO DWR IS MISSING.

TT903

PHILLIP CHANNEL TAKONG ISOLATED DANGER BUOY FL 2 SECS IN POSN 01°05.80'N 103°43.70'E REPORTED MISSING.

TT908

DANGER TO NAVIGATION (AMENDED ON 071700Z)

2 TUGBOATS REPORTED SUNK IN POSN 01°19.63'N 104°19.28'E. ALL VESSELS ARE TO NAVIGATE WITH CAUTION.

TT910

DANGER TO NAVIGATION (011210Z)

REPORT OF A HALF SUBMERGED VIETNAMESE CARGO SHIP "HOP THANH 15" OFF HORSBURGH LT IN POSN 01°26.15'N 104°24.37'E. VESSELS ARE TO NAVIGATE WITH CAUTION.

TT912

DANGER TO NAVIGATION

A VESSEL HAD SUNK IN POSITION 01°17.70'N 104°11'E. ALL VESSELS TO KEEP A SHARP LOOKOUT, NAVIGATE WITH CAUTION AND KEEP WELL CLEAR OF THE AREA.

TT913 (AMENDED 170652Z)

DANGER TO NAVIGATION

A VESSEL HAD SUNK IN WEST JURONG ANCHORAGE POSITION 01°14.17'N 103°38.17'E MARKED BY AN ISOLATED DANGER BUOY. VESSELS TO KEEP A LOOKOUT AND NAVIGATE WITH CAUTION.

SR154

THERE WAS A REPORT OF AN UNIDENTIFIED VESSEL SUNK SOUTHWEST OF HORSBURGH AT POSITION 01°16.12'N 104°21.50'E. VESSELS IN THE VICINITY ARE ADVISED TO KEEP A LOOKOUT AND REPORT SIGHTING TO SPOCC.

ISSUED BY SINGAPORE PORT OPERATIONS CONTROL CENTRE (as at 26th December 2010)

V
**REPRINT OF ADMIRALTY NOTICES TO MARINERS
 FOR DUAL BADGED CHARTS**

These notices can be accessed directly from UKHO Website:

<http://www.ukho.gov.uk/ProductsandServices/MaritimeSafety/Pages/NMPublic.aspx>

5836* SINGAPORE – Tuas View Southwards, Terumbu Pandan Southwards, Pasir Panjang Terminal and Pulau Bukom Northwards – Cautionary note. Dolphin. Light. Depths. Legends. Jetty.

Light List Vol. F, 2010/11, 1684.4

Source: Maritime and Port Authority of Singapore

Chart 4030 [*previous update 5508/10*] WGS84 DATUM

Insert	γ ★ Fl.Y.2s5m TP2	1° 16'·728N., 103° 38'·852E. (□)
Substitute	□ for former γ ★ Fl.Y.2s5m TP2	1° 16'·696N., 103° 38'·768E.

Chart 4032 [*previous update 5508/10*] WGS84 DATUM

Insert	depth 21₉	(a) 1° 14'·842N., 103° 45'·180E.
Amend	legend to, 13.5m (2005) , centred on:	1° 14'·240N., 103° 46'·100E.
Delete	depth 25₉ , closed NW of:	(a) above

Chart 4033 [*previous update 5508/10*] WGS84 DATUM

Insert	γ ★ Fl.Y.2s5m TP2	1° 16'·728N., 103° 38'·852E. (□)
Substitute	□ for former γ ★ Fl.Y.2s5m TP2	1° 16'·696N., 103° 38'·768E.

Chart 4034 [*previous update 5508/10*] WGS84 DATUM

Insert	depth 21₉	(a) 1° 14'·842N., 103° 45'·180E.
Amend	legend to, 15.0m (2010) , centred on:	1° 16'·765N., 103° 46'·066E. 1° 16'·852N., 103° 45'·924E.
Delete	depth 25₉ , closed NW of:	(a) above

Chart 4038 [*previous update 5508/10*] WGS84 DATUM

Insert	Jetty, single firm line, joining:	1° 16'·72N., 103° 38'·69E. (existing jetty) 1° 16'·71N., 103° 38'·81E. (a) 1° 16'·73N., 103° 38'·85E.
	γ ★ Fl.Y	(a) above
Substitute	□ for former γ ★ Fl.Y	1° 16'·70N., 103° 38'·77E.

V
**REPRINT OF ADMIRALTY NOTICES TO MARINERS
 FOR DUAL BADGED CHARTS**

5836* SINGAPORE – Tuas View Southwards, Terumbu Pandan Southwards, Pasir Panjang Terminal and Pulau Bukom Northwards – Cautionary note. Dolphin. Light. Depths. Legends. Jetty. (continued)

Chart 4040 [*previous update 5508/10*] WGS84 DATUM

Insert	Jetty, single firm line, joining:	1° 16'·72N., 103° 38'·69E. (existing jetty)
		1° 16'·71N., 103° 38'·81E.
		(a) 1° 16'·73N., 103° 38'·85E.
	γ★ FI.Y	(a) above
Substitute	□ for former γ★ FI.Y	1° 16'·70N., 103° 38'·77E.

Chart 4041 [*previous update 5508/10*] WGS84 DATUM

Substitute	the accompanying note, DREDGING AREA, for the existing note, DREDGING AREAS, centred on:	1° 18'·95N., 103° 56'·18E.
------------	--	----------------------------

Updated to Admiralty Notices to Mariners Edition No. 52 of 2010 dated 30th December 2010.

V
**REPRINT OF ADMIRALTY NOTICES TO MARINERS
FOR DUAL BADGED CHARTS**

To accompany Notice to Mariners 5836/10

On Chart 4041

DREDGING AREA (1° 15' 5N 103° 59' 8E)
Dredging operations will be carried out in the westbound lane of the Traffic Separation Scheme until December 2012. Navigational warning broadcasts will be made by the Vessel Traffic Information Service of Singapore (VTIS) to inform vessels of the dredging operations. Mariners are advised to navigate with caution, proceed at a safe speed when approaching the area and keep well clear of the working vessels. For further details see Singapore Notices to Mariners No. 04/67P/2008, No. 12/115T/2009 and No. 10/91T/2010 at [http://www.mpa.gov.sg/sites/port_and_shipping/circulars_and_notices/singapore_notices_to_mariners\(ntm\).page](http://www.mpa.gov.sg/sites/port_and_shipping/circulars_and_notices/singapore_notices_to_mariners(ntm).page)

SINGAPORE ELECTRONIC NAVIGATIONAL CHART (ENC) DISTRIBUTORS

Please approach any of the appointed distributors to purchase the Singapore ENC.

DISTRIBUTOR	ADDRESS	TELEPHONE/FAX NO./EMAIL/WEBSITE
DPM (Singapore) Pte Ltd	1 Maritime Square, #09-72 HarbourFront Centre, Singapore 099253	Tel. No.: +65 6270 4060 Fax No.: +65 6276 3858 Email: sales@dpmsingapore.com.sg Website: http://www.dpmsingapore.com.sg
Motion Smith	15 Jalan Kilang Barat #08-01/05 Frontech Centre Singapore 159357	Tel. No.: +65 6220 5098 Fax No.: +65 6225 4902 Email: sales@motsmith.com Website: http://www.motsmith.com
Transas Marine Pacific Pte Ltd	Cyber Centre 16 & 18 Jalan Kilang Barat Singapore 159358	Tel. No.: +65 6271 0200 Fax No.: +65 6271 7300 Email: dominic@transas.com.sg Website: http://www.transas.com.sg
Vector Services Pte Ltd	15 West Coast Highway, #02-14A Pasir Panjang Building Singapore 117861	Tel. No.: +65 6777 3602 Fax No.: +65 6777 9203 Email: kwchoy@pacific.net.sg
ChartWorld GmbH	Ruhrstrasse 90, D-22761 Hamburg, Germany	Tel. No.: +49 40 853 58 6942 Fax No.: +49 40 853 58 6949 Email: sales@chartworld.com Website : http://www.chartworld.com
Japan Hydrographic Association Electronic Charts Division	Daiichi Sogo Bldg, 6F 1-6-6, Hanedakuko, Ota-ku, Tokyo 144-0041, Japan	Tel. No.: +81 3 5708 7093 Fax No.: +81 3 5708 7094 Email: shimizu-6kj@jha.jp Website: http://www.jha.or.jp/en/jha/
Jeppesen Norway A/S	P.O Box 212 , N-4371 Egersund, Norway	Tel No.: +47 514 64 700 Fax No.: +47 514 64 701 Email: license.marine@jeppesen.com Website : http://www.jeppesen.com
PRIMAR STAVANGER	Lervigsveien 36, P.O Box 60, N-4001 Stavanger, Norway	Tel. No.: +47 51 93 9500 Fax No.: +47 51 93 9501 Email: sales@ecc.no Website : http://www.primar.no
United Kingdom Hydrographic Office	Admiralty Way, Taunton, Somerset TA1 2DN United Kingdom	Tel. No.: +44 1823 337900 Fax No.: +44 1823 284077 Emails: ENC.SalesReports@ukho.gov.uk Website: http://www.ukho.gov.uk

Agents for the Maritime and Port Authority of Singapore Nautical Charts and Publications

Agent's Name : **DPM (Singapore) Pte Ltd**
Address : 1 Maritime Square #09-72, HarbourFront Centre,
Singapore 099253
Telephone : (65) 6270 4060
Fax No. : (65) 6276 3858
E-mail : sales@dpmsingapore.com.sg
Internet Web Site : <http://www.dpmsingapore.com.sg>

Agent's Name : **E.W. Liner Charts & Publications Pte Ltd**
Address : 102F, Pasir Panjang Road, #08-01, Citilink Warehouse Complex,
Singapore 118530
Telephone : (65) 6323 0773
Fax No. : (65) 6323 0775
E-mail : ewliner@singnet.com.sg
Internet Web Site : <http://www.ewliner.com>

Agent's Name : **Motion Smith**
Address : 15 Jalan Kilang Barat
#08-01/05 Frontech Centre,
Singapore 159357
Telephone : (65) 6220 5098
(After office hours: 8163 9993)
Fax No. : (65) 6225 4902
E-mail : sales@motsmith.com
Internet Web Site : <http://www.motsmith.com>

HYDROGRAPHIC NOTE - Instructions

1. Mariners are requested to notify the Chief Hydrographer, Maritime and Port Authority of Singapore, when new or suspected dangers to navigation are discovered, changes are observed in aids to navigation or where corrections to nautical publications may be necessary. Reports, which cannot be confirmed or are lacking in certain details should not be withheld.
2. Any ambiguities of time, positioning and depth should be stressed and any firm expectation of being able to check the information provided on a following voyage should be mentioned.
3. Mariners using satellite position fixing systems, eg. GPS, should provide details of equipment and datum used (where applicable). Where bearings (true or magnetic) are taken visually or by radar to fix a position, it should include more than two objects in order to provide a check on its accuracy. A position may also be defined by bearing and distance from a conspicuous object eg. beacon, lighthouse etc.
4. The note should include a tracing or a digital image of the chart used and the details should be clearly marked.
5. Echo sounders frequently register greater depths than the advertised maximum depth for the equipment, eg. a trace appearing at 50 metres may be in fact be 550 metres or even 1050 metres for equipment whose maximum depth is 500 metres. Erroneous depths caused by 2nd transmission error can usually be recognised by the following:
 - (a) the tracing being weaker than normal for the depth registered,
 - (b) the trace appearing to pass through the transmission line,
 - (c) the feathery nature of the trace.
6. Upon receipt of a hydrographic note, a Notice to Mariners may be issued. The sender's vessel or name is quoted as the source unless the same information is also received in foreign Notices to Mariners.
7. Reports of shoals, uncharted dangers and defects in aids to navigation may also be made to the appropriate Singapore Port Operations Control Centre on VHF Channels 10, 12, 14, 68 or 73.

HYDROGRAPHIC NOTE

To:

Chief Hydrographer
Hydrographic Department
Maritime and Port Authority of Singapore
460 Alexandra Road PSA Building #20-00
Singapore 119963

Tel : (65) 6375 1227
Fax : (65) 6278 7646
Email : hydrographic@mpa.gov.sg

Sender's Contact Details :

Date :

Name of Vessel :

Address of Sender :

Tel : Fax :

Email :

Nature of Observation :

General Location :

Subject :

Position : Lat. Long.

Charts Used :

Date & Time of Observation :

Details :

.....

.....

.....

Attachment :

Equipment Used :

Type of Position Fixing : GPS / DGPS Others :

Type of Echo Sounder :

Name and Signature :

Ship's/Company's Stamp :