



SINGAPOREAN NOTICES TO MARINERS

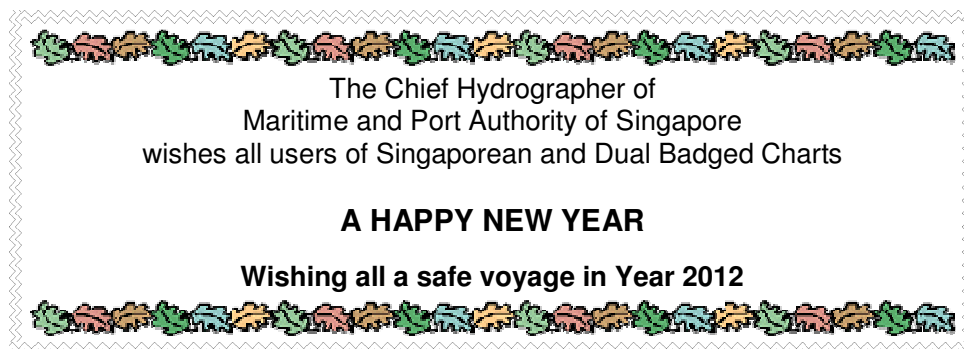
SECTION	CONTENT	Page
I	Index of Charts & Publications	1
II	New Publications	9
	Notices to Mariners and Chart Corrections	12
	Temporary and Preliminary Notices	14
III	Navigational Information	15
	Amendments to Publications	17
IV	Reprint of Radio Navigational Warnings	18
V	Extract of Admiralty Notices to Mariners for Dual Badged Charts	19

The monthly Notices to Mariners contain corrective information affecting charts published by the Hydrographic Department, Maritime and Port Authority of Singapore. The information contained in these Notices should be updated on the charts affected. Notices under Section II apply only to the particular Singaporean Chart(s) indicated.

Mariners are requested to notify the Chief Hydrographer, Maritime and Port Authority of Singapore, immediately on the discovery of new dangers or suspected dangers to navigation and of changes or defects in aids to navigation. See Hydrographic Note on back page.

The monthly Singaporean Notices to Mariners can be accessed directly from the MPA website:
[http://www.mpa.gov.sg/sites/port_and_shipping/circulars_and_notices/singapore_notices_to_mariners\(ntm\).page](http://www.mpa.gov.sg/sites/port_and_shipping/circulars_and_notices/singapore_notices_to_mariners(ntm).page)

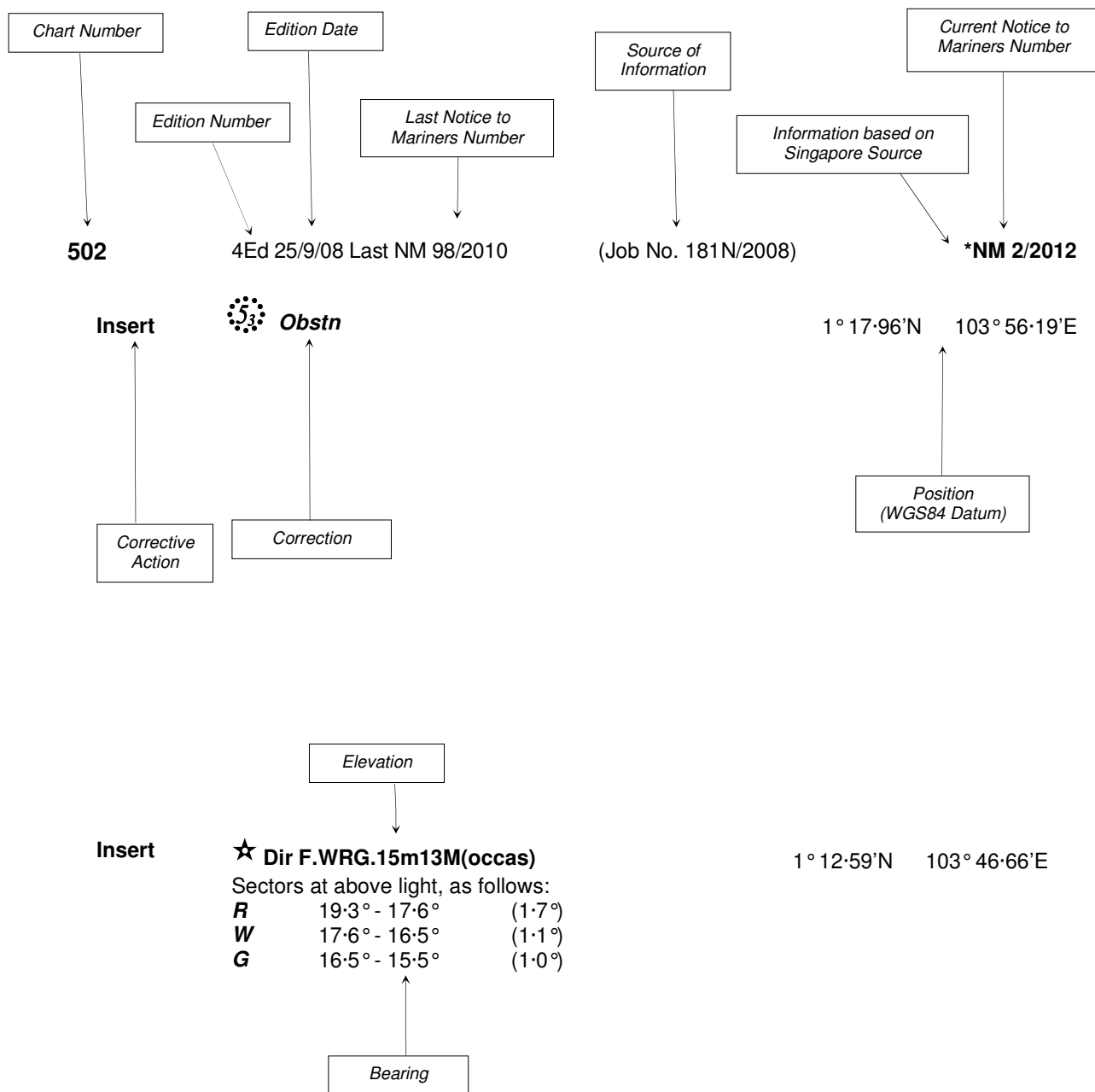
This service is offered free of charge.



Hydrographic Department
Maritime and Port Authority of Singapore
460 Alexandra Road
PSA Building #20-00
Singapore 119963
Tel: (65) 6375 1227
Fax: (65) 6278 7646

EXPLANATION OF FORMAT

The elements of a typical chart correction are explained below.



Notes:

- a) Notice to Mariners number followed by:
T indicates a Temporary Notice (eg. ***NM 3T/2012**).
P indicates a Preliminary Notice (eg. ***NM 4P/2012**).
- b) Bearings are true reckoned clockwise from 000° to 359°; those relating to lights are from seaward.
- c) Heights and elevations are above Mean High Water Springs.

I
INDEX OF CHARTS AND PUBLICATIONS

INDEX OF AFFECTED CHARTS

DESCRIPTION	NOTICE NO.	PAGE NO.
Index of Singaporean Charts	-	3
Index of Dual Badged Charts	-	5
Index of Singaporean Publications	-	7
Index of Singapore Electronic Navigational Chart (ENC)	-	8
Singapore Tide Tables 2012	-	9 to 11
Numerical Index to Notices to Mariners of 2011	*1	12
Singaporean Chart GSP1, SP1	*2	12
Singaporean Chart 501	*2	13
Temporary and Preliminary Notices	3T	14
Port Marine Notices	*4	15, 16
Straits of Malacca and Singapore Routeing System	*5	16
Singaporean Print-On-Demand (POD) Charts	*6	16
Amendments to Publications	*7	17
Reprint of Radio Navigational Warnings	-	18
Extract of Admiralty Notices to Mariners for Dual Badged Charts	-	19 to 21
Singapore Electronic Navigational Chart (ENC) Distributors	-	22
Chart Agents for the Maritime and Port Authority of Singapore Nautical Charts and Publications	-	22

*Denotes information are based on Singaporean source.

I
INDEX OF CHARTS AND PUBLICATIONS

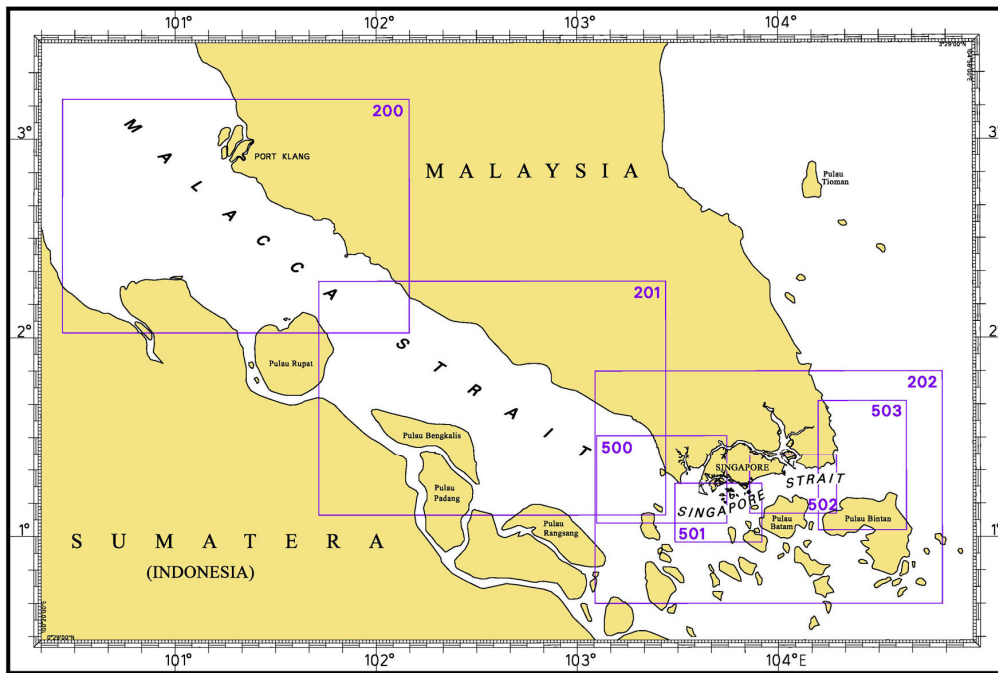
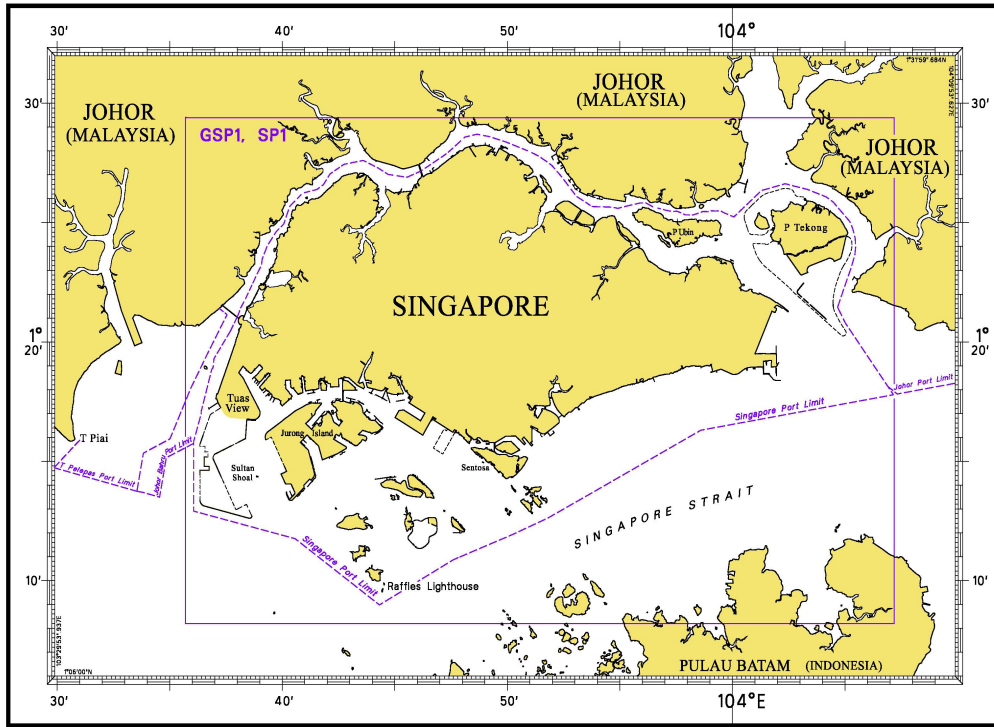
INDEX OF NOTICES

NOTICE NO.	DESCRIPTION	PAGE NO.
-	Index of Singaporean Charts	3
-	Index of Dual Badged Charts	5
-	Index of Singaporean Publications	7
-	Index of Singapore Electronic Navigational Chart (ENC)	8
-	Singapore Tide Tables 2012	9 to 11
*1	Numerical Index to Notices to Mariners of 2011	12
*2	Singaporean Chart GSP1, SP1	12
*2	Singaporean Chart 501	13
3T	Temporary and Preliminary Notices	14
*4	Port Marine Notices	15, 16
*5	Straits of Malacca and Singapore Routeing System	16
*6	Singaporean Print-On-Demand (POD) Charts	16
*7	Amendments to Publications	17
-	Reprint of Radio Navigational Warnings	18
-	Extract of Admiralty Notices to Mariners for Dual Badged Charts	19 to 21
-	Singapore Electronic Navigational Chart (ENC) Distributors	22
-	Chart Agents for the Maritime and Port Authority of Singapore Nautical Charts and Publications	22

* Denotes information are based on Singaporean source.

I INDEX OF CHARTS AND PUBLICATIONS

INDEX OF SINGAPOREAN CHARTS



Notes:
 Updated SINGAPOREAN Charts are available through our Print-On-Demand (POD) Chart Service. For more information, refer to Section III – Navigational Information. These charts can be purchased from our authorised Chart Agents.

I
INDEX OF CHARTS AND PUBLICATIONS

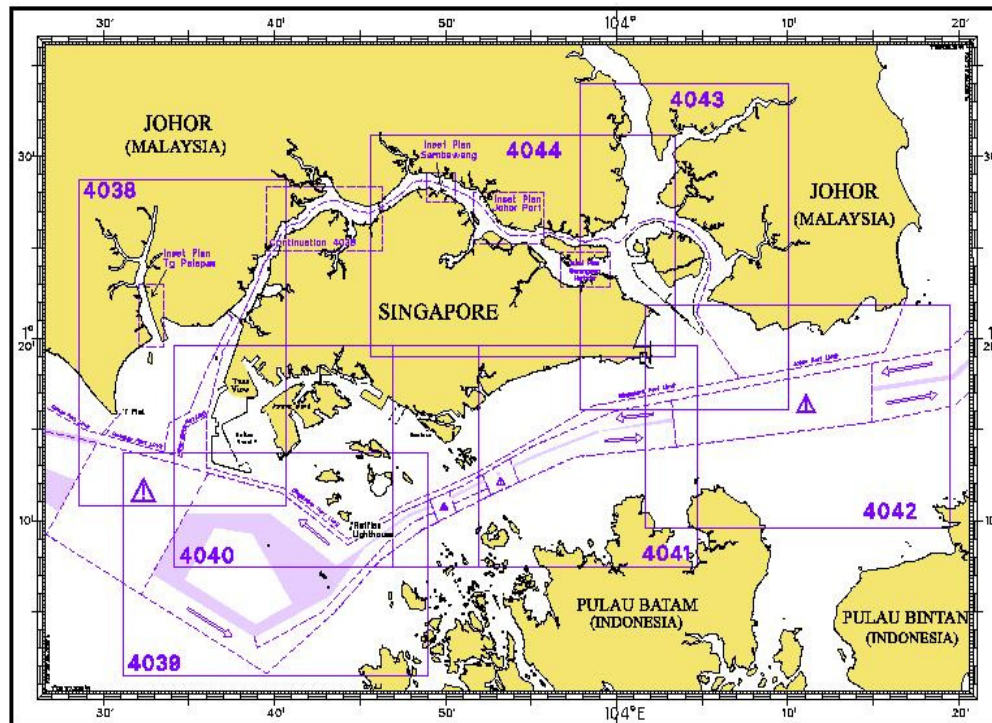
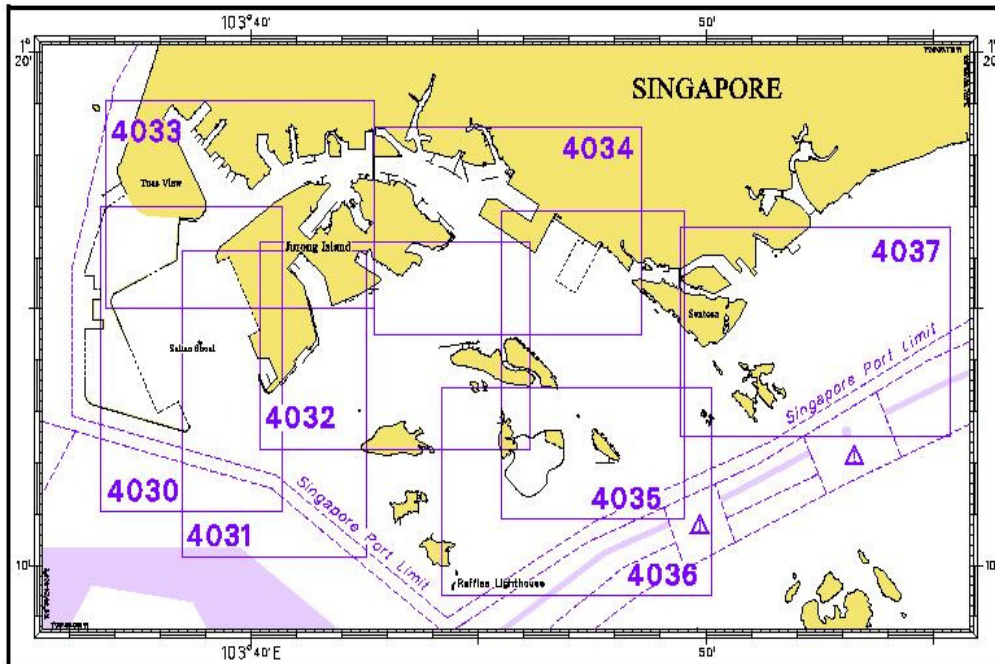
SINGAPOREAN CHART CATALOGUE

Chart No.	Chart Title	Scale 1:	Date Published of Latest Edition
1	* Symbols Abbreviations Terms and S-57 Objects	-	28/07/2011
GSP1	Anchorage and Aids to Navigation (with Area Reference)	60 000	27/01/2011
SP1	Anchorage and Aids to Navigation	60 000	27/01/2011
200	Malacca Strait - Port Klang to Tanjung Keling	200 000	22/09/2011
201	Malacca Strait - Tanjung Keling to Western Entrance of Singapore Strait	200 000	07/10/2010
202	Singapore Strait	200 000	24/09/2009
500	Malacca and Singapore Straits – Pulau Pisang to Raffles Lighthouse	75 000	07/10/2010
501	Singapore Strait – Western Part	50 000	24/09/2009
502	Singapore Strait - Eastern Part	50 000	22/09/2011
503	South China Sea - Eastern Approaches and Entrance to Singapore Strait	75 000	01/04/2010
-	Charts for Small Craft – Singapore Strait & Adjacent Waterways	10 000 to 250 000	20/01/2011

* Available at MPA website http://www.mpa.gov.sg/sites/global_navigation/publications/chart1.page

I INDEX OF CHARTS AND PUBLICATIONS

INDEX OF DUAL BADGED CHARTS



I
INDEX OF CHARTS AND PUBLICATIONS

DUAL BADGED CHART CATALOGUE

Chart No.	Chart Title	Scale 1:	Date Published of Latest Edition
4030	Port of Singapore West Jurong Anchorages and Temasek Fairway	10 000	25/03/2010
4031	Port of Singapore Western Approaches to Jurong Island	10 000	25/03/2010
4032	Port of Singapore Sinki Fairway	10 000	04/03/2010
4033	Port of Singapore Tuas Bay, West Jurong Channel and Pesek Basin	10 000	04/03/2010
4034	Port of Singapore East Jurong Channel, Pasir Panjang Terminal and West Keppel Fairway	10 000	29/09/2011
4035	Port of Singapore Western Anchorages, Jong Fairway and Cruise Bay	10 000	29/09/2011
4036	Port of Singapore Raffles Lighthouse to The Sisters	10 000	28/04/2011
4037	Port of Singapore Keppel Harbour, Tanjong Pagar Terminal and Approaches	10 000	28/04/2011
4038	Malaysia and Singapore Johor Strait – Western Part	30 000	05/08/2010
4039	Indonesia, Singapore and Malaysia Western Approaches to Main Strait	30 000	11/08/2011
4040	Singapore, Indonesia and Malaysia, Tuas View to Pulau Sakijang Bendera (S. John's Island)	30 000	11/08/2011
4041	Singapore and Indonesia, Pulau Sebarok to Changi	30 000	11/08/2011

I
INDEX OF CHARTS AND PUBLICATIONS

DUAL BADGED CHART CATALOGUE

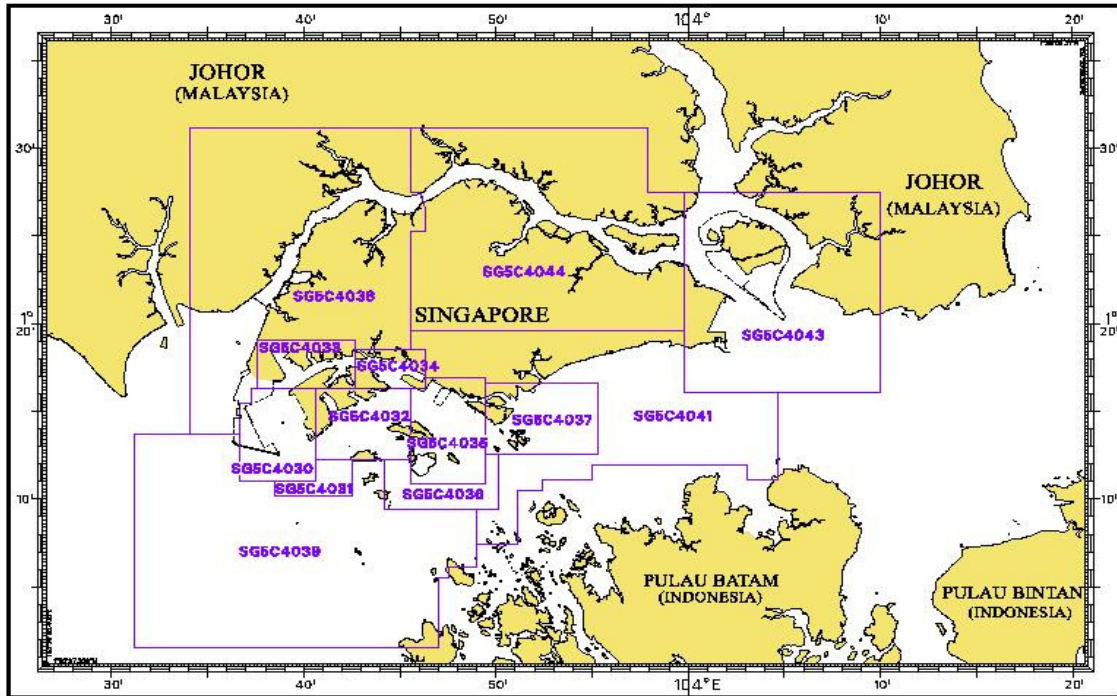
4042	Indonesia, Malaysia and Singapore, Changi to Pulau Mungging and Tanjung Buntan to Tanjung Tondang	30 000	17/02/2011
4043	Malaysia and Singapore Kuala Johor and Sungai Johor	30 000	28/07/2011
4044	Singapore and Malaysia Johor Strait - Eastern Part	30 000	28/07/2011

INDEX OF SINGAPOREAN PUBLICATIONS

Item	Title
1	Singapore Tide Tables Year 2012
2	Singapore Port Information 2010/2011

I INDEX OF CHARTS AND PUBLICATIONS

INDEX OF SINGAPORE ELECTRONIC NAVIGATIONAL CHART (ENC)



COVERAGE OF SINGAPORE ELECTRONIC NAVIGATIONAL CHART (ENC)

ENC Name	ENC Coverage	ENC Edition
SG5C4030	West Jurong Anchorages and Temasek Fairway	4 th Edition (28/10/2010)
SG5C4031	Western Approaches to Jurong Island	4 th Edition (28/10/2010)
SG5C4032	Sinki Fairway	6 th Edition (27/04/2011)
SG5C4033	Tuas Bay, West Jurong Channel and Pesek Basin	4 th Edition (28/10/2010)
SG5C4034	East Jurong Channel, Pasir Panjang Terminal and West Keppel Fairway	9 th Edition (29/09/2011)
SG5C4035	Western Anchorages, Jong Fairway and Cruise Bay	10 th Edition (29/09/2011)
SG5C4036	Raffles Lighthouse to The Sisters	5 th Edition (27/04/2011)
SG5C4037	Keppel Harbour, Tanjong Pagar Terminal and Approaches	5 th Edition (31/05/2011)
SG5C4038	Johor Strait – Western Part	4 th Edition (28/10/2010)
SG5C4039	Western Approaches to Main Strait	4 th Edition (11/08/2011)
SG5C4041	Pulau Sebarok to Changi	5 th Edition (11/08/2011)
SG5C4043	Kuala Johor and Sungai Johor	6 th Edition (28/07/2011)
SG5C4044	Johor Strait – Eastern Part	6 th Edition (28/07/2011)

II NEW PUBLICATIONS

PUBLICATION OF SINGAPORE TIDE TABLES YEAR 2012

Summary of Publication

This 251-page book contains Tidal Height and Tidal Stream Predictions covering stations in Singapore port waters and along the Malacca and Singapore Straits.

A new Tidal Stream Predictions station (Main Strait – off Tuas View) is included in the publication. This publication consist of 5 main segments to facilitate easy reference.

1. **High and Low Water Predictions** at the following stations:
 - a) Tanjong Pagar
 - b) Sembawang

2. **Hourly Tidal Height Predictions** at the following stations:
 - a) Tuas
 - b) Raffles Lighthouse
 - c) West Coast
 - d) Bukom
 - e) Tanjong Pagar
 - f) Tanah Merah
 - g) Tanjong Changi
 - h) Sembawang
 - i) Singapore Strait - Horsburgh Lighthouse

3. **Hourly Tidal Stream Predictions** at the following stations:
 - a) **Main Strait – off Tuas View**
 - b) Jong Fairway – Sisters Buoy
 - c) Main Strait – off Gusong Boarding Ground (formerly Gusong Beacon)
 - d) Sentosa
 - e) East Buran
 - f) Main Strait – Eastern Petroleum A
 - g) Kuala Johor – off Malang Tiga

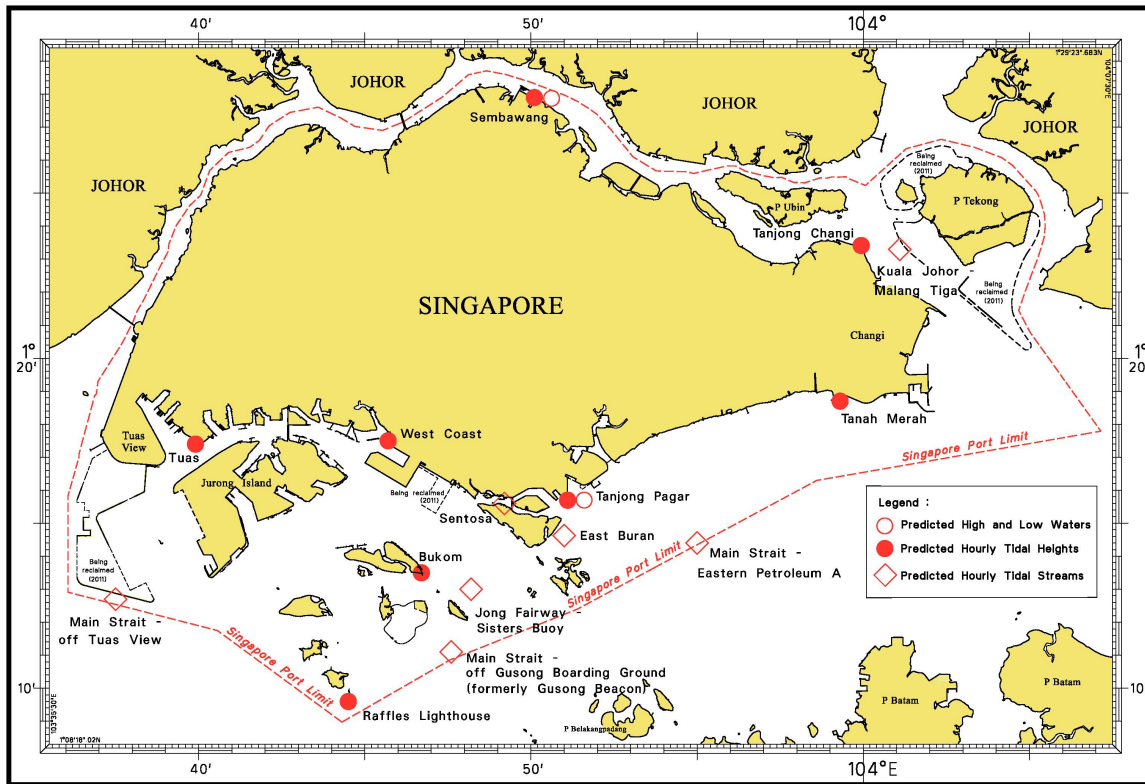
4. **Maximum and Slack Tidal Stream Predictions** at the following stations:
 - a) Malacca Strait – Off The Brothers Light
 - b) Singapore Strait – Selat Phillip
 - c) Singapore Strait – Karang Banteng (Buffalo Rock)
 - d) Singapore Strait - Horsburgh Lighthouse

5. **Malacca Strait – High and Low Water Predictions** at the following stations:
 - a) Kedah Pier, Pulau Pinang
 - b) Port Dickson
 - c) Kual Batu Pahat

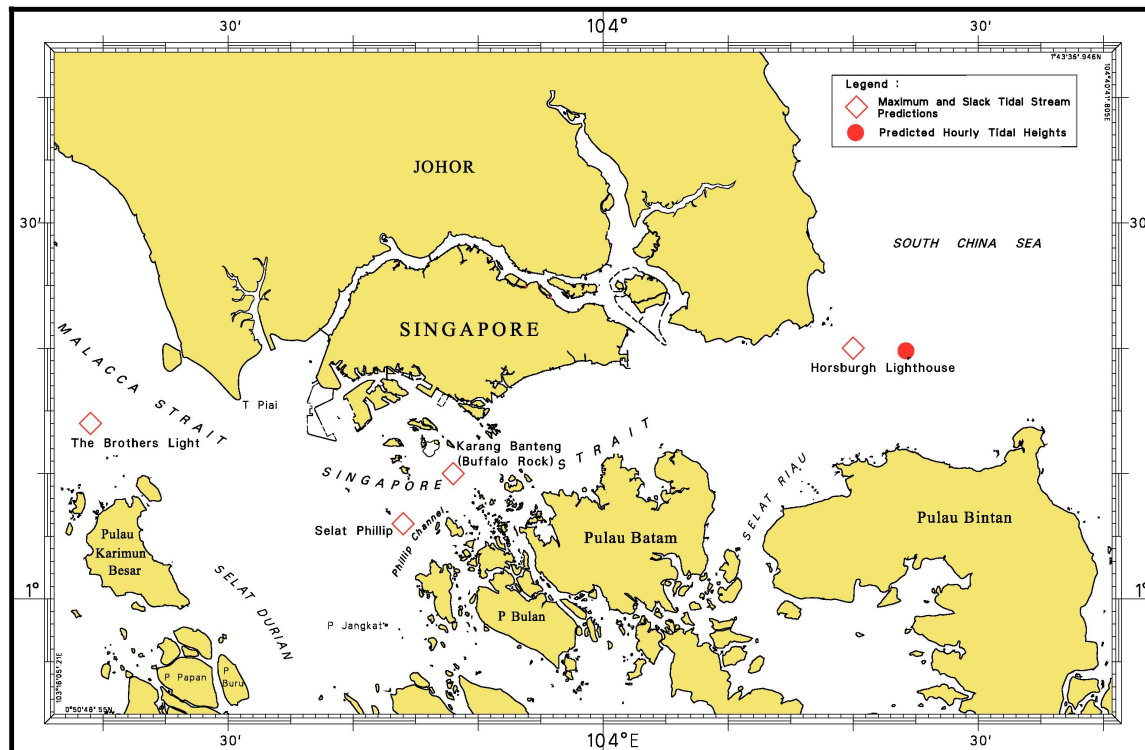
The locations of the above stations are shown in the chartlets below:

II NEW PUBLICATIONS

Tidal Prediction Stations within Singapore port waters



Tidal Prediction Stations in Malacca and Singapore Straits



II NEW PUBLICATIONS

Tidal Prediction Stations in Malacca Strait



This publication is available from the following Chart Agents:

1. DPM (Singapore) Pte Ltd
2. E.W. Limer Charts & Publications Pte Ltd
3. Motion Smith

(Please refer Page 22 for details)

II
NOTICES TO MARINERS AND CHART CORRECTIONS

*(NM 1/2012) NUMERICAL INDEX TO NOTICES TO MARINERS OF 2011 (1 TO 116)

MONTH	NOTICES TO MARINERS NO.
JANUARY 2011	1 to 16
FEBRUARY 2011	17 to 22
MARCH 2011	23 to 30
APRIL 2011	31 to 38
MAY 2011	39 to 43
JUNE 2011	44 to 56
JULY 2011	57 to 65
AUGUST 2011	66 to 71
SEPTEMBER 2011	72 to 80
OCTOBER 2011	81 to 89
NOVEMBER 2011	90 to 102
DECEMBER 2011	103 to 116

CHART NO.	PUBLISHED	YEAR	NOTICES TO MARINERS NO.
GSP1, SP1	6 Ed 27/01/11	2011	23-24-25-31-32-33-39-44-45-46-58-59-66-67-68-72-73-81-82-90-91-92-93-94-103-104-105-106-107
200	3 Ed 22/09/11	2011	95
201	4 Ed 7/10/10	2011	-
202	6 Ed 24/09/09	2011	4-5-17-26-31-32-39-47-48-49-50-60-73-74-108-109
500	6 Ed 7/10/10	2011	4-6-17-31-39-59-73-74
501	5 Ed 24/09/09	2011	3-4-17-25-31-32-39-59-73-74-107
502	5 Ed 22/09/11	2011	103-110
503	4 Ed 1/04/10	2011	5-17-51-108-109-111-112-113

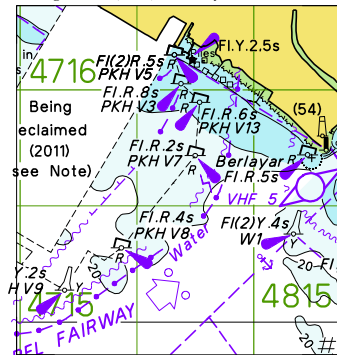
GSP1, SP1 6 Ed 27/1/11 Last NM 107/2011 (Port Marine Notice No: 164/2011) ***NM 2/2012**

Insert the accompanying block, showing amendments to working area limits and buoys, centred on: 1°15'55"N 103°47'67"E

II
NOTICES TO MARINERS AND CHART CORRECTIONS

501	5 Ed 24/9/09 Last NM 107/2011 (Port Marine Notice No: 164/2011)	*NM 2/2012
Insert	the accompanying block, showing amendments to working area limits, buoys and centred on:	1°15·58'N 103°47·17'E

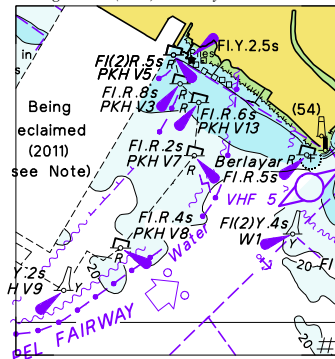
To accompany Notices to Mariners No. 2/2012
Image Size (mm) 42.8 by 46.1



Block for Chart GSP1

To accompany Notices to Mariners No. 2/2012

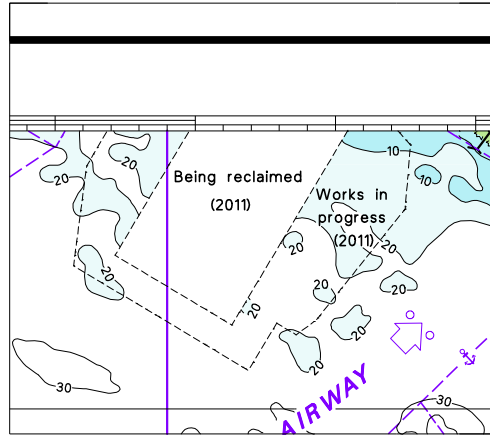
Image Size (mm) 42.8 by 46.1



Block for Chart SP1

To accompany Notices to Mariners No. 2/2012

Image Size (mm) 64.6 by 56.9



Block for Chart 501

II
TEMPORARY AND PRELIMINARY NOTICES

(NM 3T/2011) BATAM RENGIT CABLE SYSTEM (BRCS) – Cable Diversion off South Johor

Remark : The BRCS submarine cable linking Batam (Indonesia) to Rengit (Malaysia) will be rerouted at the Eastbound Lane of the Traffic Separation Scheme, in the Singapore Strait.

Work Vessel : **Cable Ship ‘ASEAN Protector’**

Call Sign : **9VFU**

Date of Installation: With effect from 7th January to 15th January 2012.

Operating hours : Daylight hours, including Sunday and Public Holiday .

1. The submarine cable routes are listed as follows :

Position	(Co-ordinates: WGS84)		Remarks (Working hours)
	Latitude (N)	Longitude (E)	
From Point A	1° 19·16'	104° 17·10'	Daylight hours
to Point B	1° 17·98'	104° 17·09'	Daylight hours
to Point C	1° 17·98'	104° 13·89'	Daylight hours

2. Charts affected : 202, 502, 503 and 4042.

3. Mariners are advised
 a) to navigate with caution.
 b) not to anchor or trawl in the vicinity of the cable route.
 c) to give a wide berth of radius 1000m from the working vessel.

Source : HD/DB67/14/2011.

III NAVIGATIONAL INFORMATION

*(NM 4/2012) PORT MARINE NOTICES

The following PMNs have been shortlisted, as they would be of particular interest to mariners.

These notices can be accessed directly from MPA website:

http://www.mpa.gov.sg/sites/port_and_shipping/circulars_and_notices/port_marine_notices.page

PMN No.	Subject
82/2011	Construction of jetties at Banyan Basin (Selat Banyan West Jetty).
83/2011	Reclamation at Ayer Merbau, Jurong Island.
94/2011	Underwater drilling and blasting works at Pasir Panjang Fairway.
101/2011	Construction of Changi East Finger Extension.
105/2011	Construction of sea water intake structure off Jurong Island.
107/2011	Construction of SLNG Terminal at Jurong Island.
108/2011	Underwater drilling and blasting works at Pasir Panjang Fairway.
111/2011	Construction works at Keppel Shipyard.
113/2011	Construction works at Shell, Pulau Bukom Wharf No. 9.
119/2011	Construction works at Sembawang Shipyard.
122/2011	Marine construction works off Marina Barrage.
125/2011	Construction works at Vopak Terminal, Jurong Island.
129/2011	Construction of wharf at Tuas South.
131/2011	Installation of Silt Barricade off Pasir Panjang Ferry Terminal.
132/2011	Dredging works off Keppel FEL Shipyard.
133/2011	Reclamation of Jurong Island Phase 4.
140/2011	Reclamation work at Tuas View Extension.
141/2011	Dredging works at Sungei Pandan.
142/2011	Construction of SLNG Terminal at Jurong Island.
149/2011	Reclamation of Tuas View Extension.
153/2011	Construction of new Floating Dock and South Quay extension at Keppel Singmarine Shipyard.
154/2011	Construction of sea water intake structure off Jurong Island.
158/2011	Construction of pontoon facility at West Coast Base.
164/2011	Reclamation at Pasir Panjang Terminal and Pasir Panjang Wharves.

III NAVIGATIONAL INFORMATION

PMN No.	Subject
165/2011	Replacement of Sea Barrier off NPCC Camp, Pulau Ubin.
166/2011	Reclamation at Pulau Tekong.
168/2011	Mooring and unmooring of vessels at mooring buoys off Ayer Merbau, Jurong Island.
169/2011	Coastal protection and restoration of mangrove biodiversity at Pulau Tekong.
170/2011	Closure of Marina South Pier Jetty No. 2 for maintenance.
171/2011	Dredging works off Pasir Panjang Terminal.

*(NM 5/2012)

STRAITS OF MALACCA AND SINGAPORE ROUTEING SYSTEM

Information concerning schemes shown on Singaporean Charts.
(Former NM 1/14/2011 is cancelled)

1. The information concerning the Straits of Malacca and Singapore Routeing System are charted in the Singaporean Charts 200, 201, 202, 500, 501, 502, 503 and Dual Badged Charts 4038, 4039, 4040, 4041, 4042 and 4043. All positions are referred to World Geodetic System 1984 (WGS 84) datum.
2. The description of the Traffic Separation Scheme and the rules for vessels navigating through the Straits of Malacca and Singapore are published in the Singapore Port Information 2010/2011.

*(NM 6/2012)

SINGAPOREAN PRINT-ON-DEMAND (POD) CHARTS

Print-On-Demand (POD) Charts are the most up-to-date paper nautical charts printed for navigational use. These nautical charts are produced in accordance with the International Hydrographic Organisation (IHO) chart specifications. These official nautical charts are continually updated to the latest Notices to Mariners before they are printed and sold to users.

These POD Charts include GSP1, SP1, 200, 201, 202, 500, 501, 502 and 503.

BENEFITS TO OUR CUSTOMERS**Convenience**

Customers need not make numerous hand corrections to the nautical charts before use. In addition the updated POD Charts are more accurate and reliable than offset printed charts with hand corrections.

Clarity

Clarity in the presentation of updated information as compared to lithographic printed charts, where in some cases there are several overlapping corrections over existing information.

Coverage

The POD Charts cover the Malacca and Singapore Straits, from One Fathom Bank to Horsburgh Lighthouse.

III
AMENDMENTS TO PUBLICATIONS

***(NM 7/2012) UPDATING OF PUBLICATION "SINGAPORE PORT INFORMATION 2010/2011"**

1. Page 121

Insert the following:

SELAT PANDAN

Name of Beacon/Buoy	Position Lat. N Long. E Deg Min	Structure Colour & Shape	Light Characteristic	Owner
Merbau Buoy	01 15.619 103 43.773	Red can	Fl(3)R.15s	MPA

Source: HD/HE025/110/11

2. Page 121

Delete the following:

SELAT PANDAN

Name of Beacon/Buoy	Position Lat. N Long. E Deg Min	Structure Colour & Shape	Light Characteristic	Owner
Merbau Beacon	01 15.779 103 43.757	Red cylinder on red tubular tower on red cylindrical base	Fl(3)R.15s7m5M	MPA

Source: HD/HE025/111/11

IV
REPRINT OF RADIO NAVIGATIONAL WARNINGS

The following Radio Navigational Warnings have been shortlisted, as they would be of particular interest to mariners.

TT008

DANGER TO NAVIGATION:

FIVE(5) CONTAINERS FELL INTO THE SEA AT POSITION 01°30.4'N 104°32.6'E. VESSEL TO KEEP A GOOD LOOKOUT & REPORT SIGHTINGS TO SINGAPORE VTIS EAST ON VHF CH10.

TT012

BUFFALO ROCK ISOLATED DANGER MARKS FL(2)5SECS IN POSITION 01°09.90'N 103°48.15'E IS UNLIT.

TT173

VESSELS IN EAST JOHOR STRAIT ARE ADVISED TO NAVIGATE WITH CAUTION WHEN NEAR THE PROJECT AREAS OFF PULAU TEKONG, CHANGI AND MALANG PAPAN AS SHALLOW WATER AREAS EXIST. VESSELS ARE ADVISED TO KEEP LOOKOUT FOR TUGS AND BARGES NAVIGATING NEAR THE PROJECT AREAS AND PASSENGER FERRIES CROSSING BETWEEN CHANGI AND PULAU TEKONG AND VICINITY OF PASIR GUDANG.

TT884

SALVAGE OPERATIONS UNDERWAY IN 01°13.40'N 103°57.75'E. ALL SHIPS ARE REQUESTED TO GIVE A WIDE BERTH OF AT LEAST 5 CABLES WHEN PASSING THE AREA.

TT931

VESSELS NAVIGATING IN THE SINGAPORE STRAIT ARE REQUESTED NOT TO DIRECT THEIR HIGH INTENSITY SEARCHLIGHTS SKYWARD IN THE VICINITY OF CHANGI AIRPORT TO AVOID DISRUPTION TO AIR NAVIGATION.

TT961

VESSELS INTENDING TO CROSS THE TRAFFIC SEPERATION SCHEME(TSS) OR PRECAUTIONARY AREAS IN THE SINGAPORE STRAIT DURING THE HOURS OF DARKNESS ARE RECOMMENDED TO DISPLAY THE NIGHT SIGNALS CONSISTING OF 3 ALL-ROUND GREEN LIGHTS IN A VERTICAL LINE WITH EFFECT FROM 1ST JULY 2011 AT 0000HRS UTC (0800HRS SINGAPORE LOCAL TIME) AS DETAILED IN MARITIME AND PORT AUTHORITY OF SINGAPORE'S PORT MARINE CIRCULAR, 02 OF 2011 DATED 30 MAY 2011.

TT997

BUFFALO ROCK BEACON AT POSITION LAT 01°09.41'N LONG 103°48.80'E ARE REPORTED COLLAPSED. CAUTION ADVISED.

ISSUED BY SINGAPORE PORT OPERATIONS CONTROL CENTRE (as at 25th December 2011)

V
**EXTRACT OF ADMIRALTY NOTICES TO MARINERS
 FOR DUAL BADGED CHARTS**

These notices can also be accessed directly from UKHO Website:

<http://www.ukho.gov.uk/ProductsandServices/MaritimeSafety/Pages/NMPublic.aspx>

5494* MALAYSIA – Peninsular Malaysia, East Coast – Johor –Batuan Guillamard – Obstruction.

Source: Marine Department, Peninsular Malaysia Notice 67/11

Chart 4043 [*previous update 3954/11*] WGS84 DATUM

Insert  **Obstn** 1° 26'·16N., 104° 04'·37E.

5495* SINGAPORE – Temasek Fairway, Selat Pandan, Marina South and Angler Bank – Buoyage. Mooring buoys. Obstructions. Radio reporting points. Jetty. Legend. Wreck.

Source: Maritime and Port Authority of Singapore

Chart 4030 [*previous update 5023/11*] WGS84 DATUM

Insert  **Fl.Y.4s APRJI-B4** 1° 14'·935N., 103° 39'·814E.

 **Fl.Y.4s APRJI-B5** 1° 14'·864N., 103° 40'·013E.

 **Fl.Y.4s APRJI-B6** 1° 14'·659N., 103° 39'·942E.

 **Fl.G.4s Jurong Dua** 1° 14'·862N., 103° 39'·524E.

Move  **Fl.G.6s Jurong Tiga**, from: 1° 15'·268N., 103° 39'·330E.

to: 1° 15'·395N., 103° 39'·269E.

Delete former  **Fl.G.4s Jurong Dua** 1° 14'·672N., 103° 39'·613E.

Chart 4031 [*previous update 3810/2011*] WGS84 DATUM

Insert  **Fl.Y.4s APRJI-B4** 1° 14'·935N., 103° 39'·814E.

 **Fl.Y.4s APRJI-B5** 1° 14'·864N., 103° 40'·013E.

 **Fl.Y.4s APRJI-B6** 1° 14'·659N., 103° 39'·942E.

 **Fl.G.4s Jurong Dua** 1° 14'·862N., 103° 39'·524E.

Move  **Fl.G.6s Jurong Tiga**, from: 1° 15'·268N., 103° 39'·330E.

to: 1° 15'·395N., 103° 39'·269E.

Delete former  **Fl.G.4s Jurong Dua** 1° 14'·672N., 103° 39'·613E.

Chart 4032 [*previous update 5023/2011*] WGS84 DATUM

Insert  **Fl.Y.4s MB4** 1° 15'·647N., 103° 43'·635E.

Move  **Fl.Y.4s MB2**, from: 1° 15'·608N., 103° 43'·615E.

to: 1° 15'·579N., 103° 43'·599E.

V
**EXTRACT OF ADMIRALTY NOTICES TO MARINERS
 FOR DUAL BADGED CHARTS**

5495* SINGAPORE – Temasek Fairway, Selat Pandan, Marina South and Angler Bank – Buoyage. Mooring buoys. Obstructions. Radio reporting points. Jetty. Legend. Wreck. (continued)

Chart 4033 [previous update 5023/2011] WGS84 DATUM

Move  **FI.G.6s Jurong Tiga**, from: 1° 15'·268N., 103° 39'·330E.
 to: 1° 15'·395N., 103° 39'·269E.

Chart 4034 [previous update 5023/2011] WGS84 DATUM

Insert  **FI.Y.4s MB4** 1° 15'·647N., 103° 43'·635E.
 Move  **FI.Y.4s MB2**, from: 1° 15'·608N., 103° 43'·615E.
 to: 1° 15'·579N., 103° 43'·599E.

Chart 4037 [previous update 5023/2011] WGS84 DATUM


Insert  **Obstn** 1° 15'·575N., 103° 51'·786E.

Chart 4038 [previous update 2940/11] WGS84 DATUM














Insert  **FI.Y.4s APRJI-B4** 1° 14'·94N., 103° 39'·81E.
 **FI.Y.4s APRJI-B5** 1° 14'·86N., 103° 40'·01E.
 **FI.Y.4s APRJI-B6** 1° 14'·66N., 103° 39'·94E.
 , direction of vessel movement 154°/334° 1° 13'·88N., 103° 39'·64E.
 Move  **FI.G.6s Jurong Tiga**, from: 1° 15'·27N., 103° 39'·33E.
 to: 1° 15'·40N., 103° 39'·27E.
 **FI.G.4s Jurong Dua**, from: 1° 14'·67N., 103° 39'·61E.
 to: 1° 14'·86N., 103° 39'·52E.

Chart 4040 [previous update 5023/2011] WGS84 DATUM

Insert  **FI.Y.4s APRJI-B4** 1° 14'·94N., 103° 39'·81E.
 **FI.Y.4s APRJI-B5** 1° 14'·86N., 103° 40'·01E.
 **FI.Y.4s APRJI-B6** 1° 14'·66N., 103° 39'·94E.
 **FI.Y.4s MB4** 1° 15'·65N., 103° 43'·64E.
 **Obstn** 1° 15'·58N., 103° 51'·79E.
 Move  **FI.G.6s Jurong Tiga**, from: 1° 15'·27N., 103° 39'·33E.
 to: 1° 15'·40N., 103° 39'·27E.
 **FI.G.4s Jurong Dua**, from: 1° 14'·67N., 103° 39'·61E.
 to: 1° 14'·86N., 103° 39'·52E.

V
**EXTRACT OF ADMIRALTY NOTICES TO MARINERS
 FOR DUAL BADGED CHARTS**

5495* SINGAPORE – Temasek Fairway, Selat Pandan, Marina South and Angler Bank – Buoyage. Mooring buoys. Obstructions. Radio reporting points. Jetty. Legend. Wreck. (continued)

Move  **Fl.Y.4s MB2**, from: 1° 15'·61N., 103° 43'·62E.
 to: 1° 15'·58N., 103° 43'·60E.

Delete  1° 15'·92N., 103° 38'·59E.

Chart 4041 [previous update 5023/2011] WGS84 DATUM

Insert jetty, single pecked line, joining: 1° 16'·21N., 103° 51'·76E. (shore)
 1° 15'·76N., 103° 52'·08E.

legend, Jetty under construction, centred on: 1° 15'·84N., 103° 51'·89E.


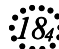
 **13 Wk** 1° 16'·21N., 103° 52'·06E.
 **18 Obstn** 1° 15'·58N., 103° 51'·79E.

Chart 4042 [previous update 3954/2011] WGS84 DATUM

Insert  **9 Obstn** 1° 20'·24N., 104° 03'·70E.

Chart 4043 [previous update 5494/2011] WGS84 DATUM

Insert  **9 Obstn** 1° 20'·24N., 104° 03'·70E.

5715* INDONESIA – Sumatera – Teluk Jodoh Westwards and Batu Berhanti North-north-eastwards – Wrecks
 Source: Indonesian Chart 44 & Dishidros

Chart 4041 [previous update 5495/2011] WGS84 DATUM

Delete  1° 09'·24N., 103° 55'·62E.
 1° 11'·32N., 103° 53'·06E.

Updated to Admiralty Notices to Mariners Edition No. 52 of 2011 dated 29th December 2011.

SINGAPORE ELECTRONIC NAVIGATIONAL CHART (ENC) DISTRIBUTORS

Please approach any of the appointed distributors to purchase the Singapore ENC.

DISTRIBUTOR	ADDRESS	TELEPHONE/FAX NO./EMAIL/WEBSITE
DPM (Singapore) Pte Ltd	1 Maritime Square, #09-72 HarbourFront Centre, Singapore 099253	Tel. No.: +65 6270 4060 Fax No.: +65 6276 3858 Email: sales@dpmssingapore.com.sg Website: http://www.dpmsingapore.com.sg
MARIS Information Systems (MARIS)	52 Telok Blangah Road #01-06 Telok Blangah House Singapore 058809	Tel. No.: +65 6276 1472 Fax No.: +65 6276 1473 Email: support@maris.sg Website: http://www.maris.no
Maritime Information Systems AS (MARIS)	Danholmen 25, 3128 Notteroy, Norway	Tel. No.: +47 33 30 42 50 Fax No.: +47 33 30 42 51 Email: sales@maris.no Website: http://www.maris.no
Motion Smith	15 Jalan Kilang Barat #08-01/05 Frontech Centre Singapore 159357	Tel. No.: +65 6220 5098 Fax No.: +65 6225 4902 Email: sales@motsmith.com Website: http://www.motsmith.com
Transas Marine Pacific Pte Ltd	Cyber Centre 16 & 18 Jalan Kilang Barat Singapore 159358	Tel. No.: +65 6271 0200 Fax No.: +65 6271 7300 Email: dominic@transas.com.sg Website: http://www.transas.com.sg
Vector Services Pte Ltd	15 West Coast Highway, #02-14A Pasir Panjang Building Singapore 117861	Tel. No.: +65 6777 3602 Fax No.: +65 6777 9203 Email: kwchoy@pacific.net.sg
ChartWorld GmbH	Ruhrstrasse 90, D-22761 Hamburg, Germany	Tel. No.: +49 40 853 58 6942 Fax No.: +49 40 853 58 6949 Email: sales@chartworld.com Website : http://www.chartworld.com
Japan Hydrographic Association Electronic Charts Division	Daiichi Sogo Bldg, 6F 1-6-6, Hanedakuko, Ota-ku, Tokyo 144-0041, Japan	Tel. No.: +81 3 5708 7093 Fax No.: +81 3 5708 7094 Email: shimizu-6kj@jha.jp Website: http://www.jha.or.jp/en/jha/
Jeppesen Norway A/S	P.O Box 212 , N-4371 Egersund, Norway	Tel No.: +47 514 64 700 Fax No: +47 514 64 701 Email: license.marine@jeppesen.com Website : http://www.jeppesen.com
PRIMAR STAVANGER	Lervigsveien 36, P.O Box 60, N-4001 Stavanger, Norway	Tel. No.: +47 51 93 9500 Fax No.: +47 51 93 9501 Email: sales@ecc.no Website : http://www.primar.no
United Kingdom Hydrographic Office	Admiralty Way, Taunton, Somerset TA1 2DN United Kingdom	Tel. No.: +44 1823 337900 Fax No.: +44 1823 284077 Email: ENC.SalesReports@ukho.gov.uk Website: http://www.ukho.gov.uk

**Chart Agents for the Maritime and Port Authority of Singapore
Nautical Charts and Publications**

Please approach any of the appointed chart agent to purchase the Singapore Nautical Charts and Publications.

CHART AGENT	ADDRESS	TELEPHONE/FAX NO./EMAIL/WEBSITE
DPM (Singapore) Pte Ltd	1 Maritime Square, #09-72 HarbourFront Centre, Singapore 099253	Tel. No.: +65 6270 4060 Fax No.: +65 6276 3858 Email: sales@dpmssingapore.com.sg Website: http://www.dpmsingapore.com.sg
E.W. Liner Charts & Publications Pte Ltd	102F, Pasir Panjang Road, #08-01, Citilink Warehouse Complex, Singapore 118530	Tel. No.: +65 6323 0773 Fax No.: +65 6323 0775 Email: ewliner@singnet.com.sg Website: http://www.ewliner.com
Motion Smith	15 Jalan Kilang Barat #08-01/05 Frontech Centre Singapore 159357	Tel. No.: +65 6220 5098 (After office hours: +65 8163 9993) Fax No.: +65 6225 4902 Email: sales@motsmith.com Website: http://www.motsmith.com

HYDROGRAPHIC NOTE - Instructions

1. Mariners are requested to notify the Chief Hydrographer, Maritime and Port Authority of Singapore, when new or suspected dangers to navigation are discovered, changes are observed in aids to navigation or where corrections to nautical publications may be necessary. Reports, which cannot be confirmed or are lacking in certain details should not be withheld.
2. Any ambiguities of time, positioning and depth should be stressed and any firm expectation of being able to check the information provided on a following voyage should be mentioned.
3. Mariners using satellite position fixing systems, eg. GPS, should provide details of equipment and datum used (where applicable). Where bearings (true or magnetic) are taken visually or by radar to fix a position, it should include more than two objects in order to provide a check on its accuracy. A position may also be defined by bearing and distance from a conspicuous object eg. beacon, lighthouse etc.
4. The note should include a tracing or a digital image of the chart used and the details should be clearly marked.
5. Echo sounders frequently register greater depths than the advertised maximum depth for the equipment, eg. a trace appearing at 50 metres may be in fact be 550 metres or even 1050 metres for equipment whose maximum depth is 500 metres. Erroneous depths caused by 2nd transmission error can usually be recognised by the following:
 - (a) the tracing being weaker than normal for the depth registered,
 - (b) the trace appearing to pass through the transmission line,
 - (c) the feathery nature of the trace.
6. Upon receipt of a hydrographic note, a Notice to Mariners may be issued. The sender's vessel or name is quoted as the source unless the same information is also received in foreign Notices to Mariners.
7. Reports of shoals, uncharted dangers and defects in aids to navigation may also be made to the appropriate Singapore Port Operations Control Centre on VHF Channels 10, 12, 14, 68 or 73.

HYDROGRAPHIC NOTE

To:

Chief Hydrographer
Maritime and Port Authority of Singapore
460 Alexandra Road PSA Building #20-00
Singapore 119963

Tel : (65) 6375 1227
Fax : (65) 6278 7646
Email : hydrographic@mpa.gov.sg

Sender's Contact Details :

Date :

Name of Vessel :

Address of Sender :

Tel : Fax :

Email :

Nature of Observation :

General Location :

Subject :

Position : Lat. Long.

Charts Used :

Date & Time of Observation :

Details :

.....

.....

Attachment :

Equipment Used :

Type of Position Fixing : GPS / DGPS Others :

Type of Echo Sounder :

Name and Signature :

Ship's/Company's Stamp :