



SINGAPOREAN NOTICES TO MARINERS

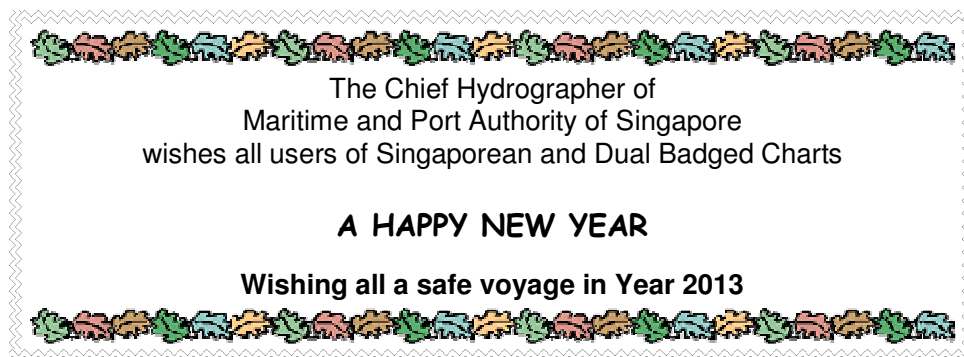
SECTION	CONTENT	Page
I	Index of Charts & Publications	1
II	New Publications	9
	Notices to Mariners and Chart Corrections	13
	Temporary and Preliminary Notices	16
III	Navigational Information	17
	Amendments to Publications	19
IV	Reprint of Radio Navigational Warnings	20
V	Extract of Admiralty Notices to Mariners for Dual Badged Charts	21

The monthly Notices to Mariners contain corrective information affecting charts published by the Hydrographic Department, Maritime and Port Authority of Singapore. The information contained in these Notices should be updated on the charts affected. Notices under Section II apply only to the particular Singaporean Chart(s) indicated.

Mariners are requested to notify the Chief Hydrographer, Maritime and Port Authority of Singapore, immediately on the discovery of new dangers or suspected dangers to navigation and of changes or defects in aids to navigation. See Hydrographic Note on back page.

The monthly Singaporean Notices to Mariners can be accessed directly from the MPA website:
[http://www.mpa.gov.sg/sites/port_and_shipping/circulars_and_notices/singapore_notices_to_mariners\(ntm\).page](http://www.mpa.gov.sg/sites/port_and_shipping/circulars_and_notices/singapore_notices_to_mariners(ntm).page)

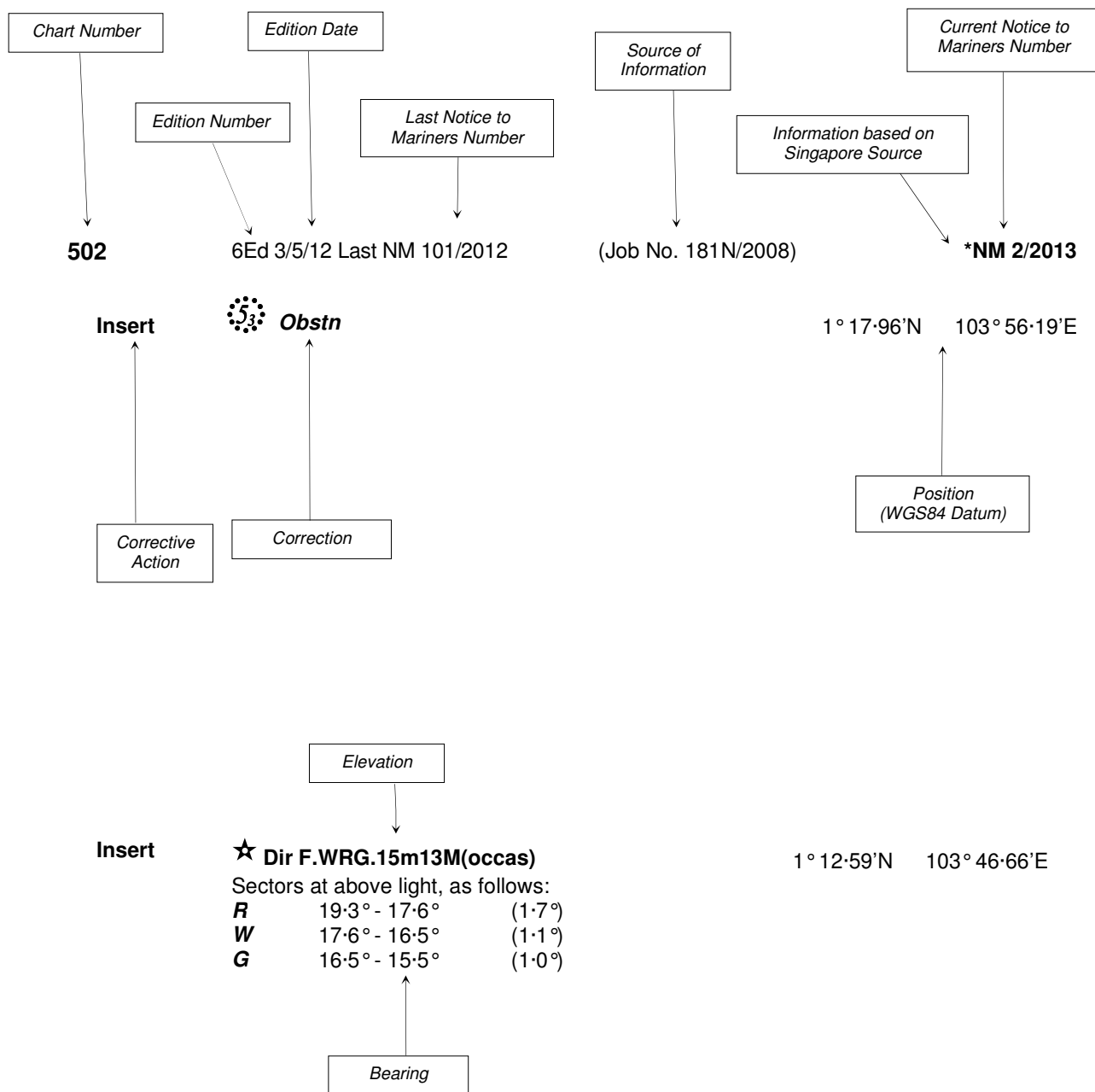
This service is offered free of charge.



Hydrographic Department
Maritime and Port Authority of Singapore
460 Alexandra Road
PSA Building #20-00
Singapore 119963
Tel: (65) 6375 1227
Fax: (65) 6278 7646

EXPLANATION OF FORMAT

The elements of a typical chart correction are explained below.



Notes:

- a) Notice to Mariners number followed by:
T indicates a Temporary Notice (eg. ***NM 3T/2013**).
P indicates a Preliminary Notice (eg. ***NM 4P/2013**).
- b) Bearings are true reckoned clockwise from 000° to 359°; those relating to lights are from seaward.
- c) Heights and elevations are above Mean High Water Springs.

I
INDEX OF CHARTS AND PUBLICATIONS

INDEX OF AFFECTED CHARTS

DESCRIPTION	NOTICE NO.	PAGE NO.
Index of Singaporean Charts	-	3
Index of Dual Badged Charts	-	5
Index of Singaporean Publications	-	7
Index of Singapore Electronic Navigational Chart (ENC)	-	8
Singapore Tide Tables 2013	-	9 to 11
New Edition Singaporean Chart	-	12
Singaporean Chart GSP1/SP1	*2, 3	13, 14
Singaporean Chart 200	4	14
Singaporean Chart 202	5, 6	14
Singaporean Chart 500	*2	14
Singaporean Chart 501	*2, 6	15
Singaporean Chart 502	3, 5	15
Temporary and Preliminary Notices	-	16
Singapore Port Marine Notices	*7	17, 18
Straits of Malacca and Singapore Routeing System	*8	18
Singaporean Print-On-Demand (POD) Charts	*9	18
Amendments to Publications	-	19
Reprint of Radio Navigational Warnings	-	20
Extract of Admiralty Notices to Mariners for Dual Badged Charts	-	21, 22
Singapore Electronic Navigational Chart (ENC) Distributors	-	23
Chart Agents for the Maritime and Port Authority of Singapore Nautical Charts and Publications	-	24

*Denotes information are based on Singaporean source.

I
INDEX OF CHARTS AND PUBLICATIONS

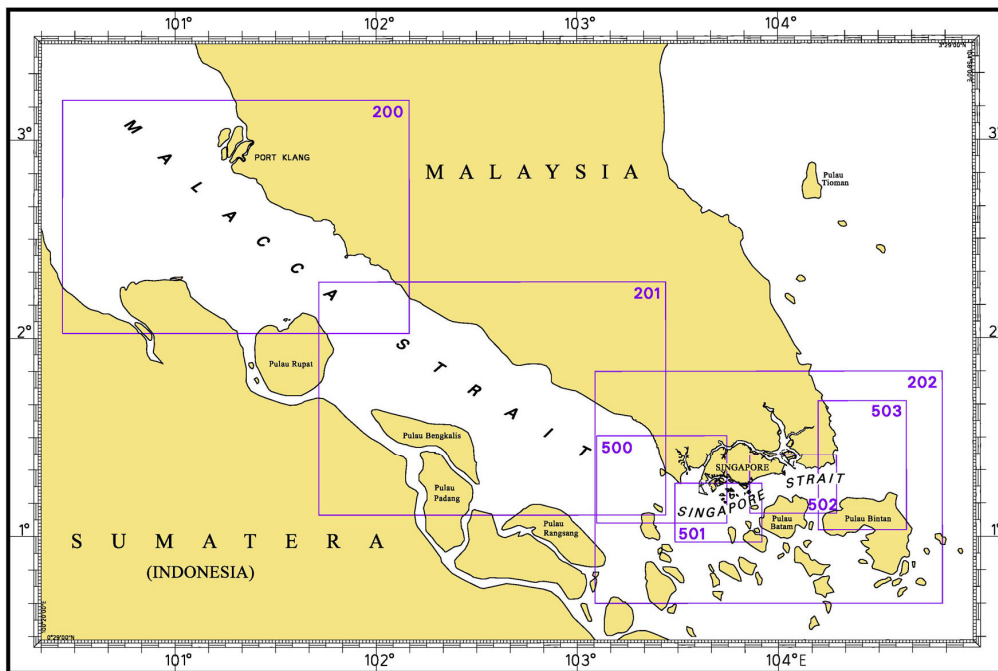
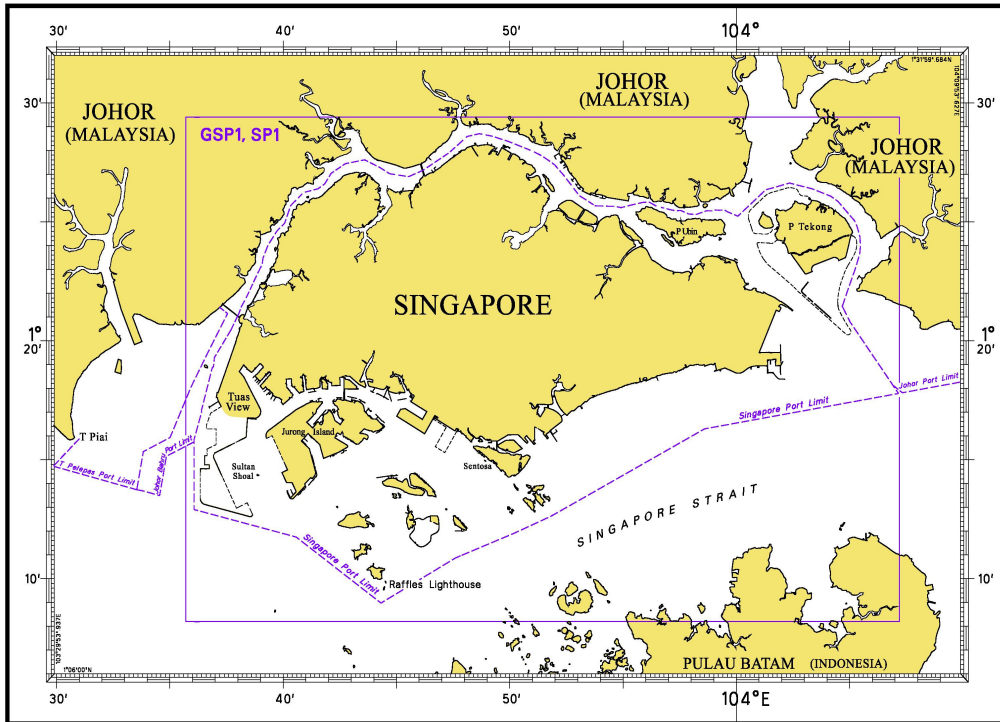
INDEX OF NOTICES

NOTICE NO.	DESCRIPTION	PAGE NO.
-	Index of Singaporean Charts	3
-	Index of Dual Badged Charts	5
-	Index of Singaporean Publications	7
-	Index of Singapore Electronic Navigational Chart (ENC)	8
-	Singapore Tide Tables 2013	9 to 11
-	New Edition Singaporean Chart	12
*2, 3	Singaporean Chart GSP1/SP1	13, 14
4	Singaporean Chart 200	14
5, 6	Singaporean Chart 202	14
*2	Singaporean Chart 500	14
*2, 6	Singaporean Chart 501	15
3, 5	Singaporean Chart 502	15
-	Temporary and Preliminary Notices	16
*7	Singapore Port Marine Notices	17, 18
*8	Straits of Malacca and Singapore Routeing System	18
*9	Singaporean Print-On-Demand (POD) Charts	18
-	Amendments to Publications	19
-	Reprint of Radio Navigational Warnings	20
-	Extract of Admiralty Notices to Mariners for Dual Badged Charts	21, 22
-	Singapore Electronic Navigational Chart Distributors	23
-	Chart Agents for the Maritime and Port Authority of Singapore Nautical Charts and Publications	24

* Denotes information are based on Singaporean source.

I INDEX OF CHARTS AND PUBLICATIONS

INDEX OF SINGAPOREAN CHARTS



Notes:
Updated SINGAPOREAN Charts are available through our Print-On-Demand (POD) Chart Service. For more information, refer to Section III – Navigational Information. These charts can be purchased from our authorised Chart Agents.

I
INDEX OF CHARTS AND PUBLICATIONS

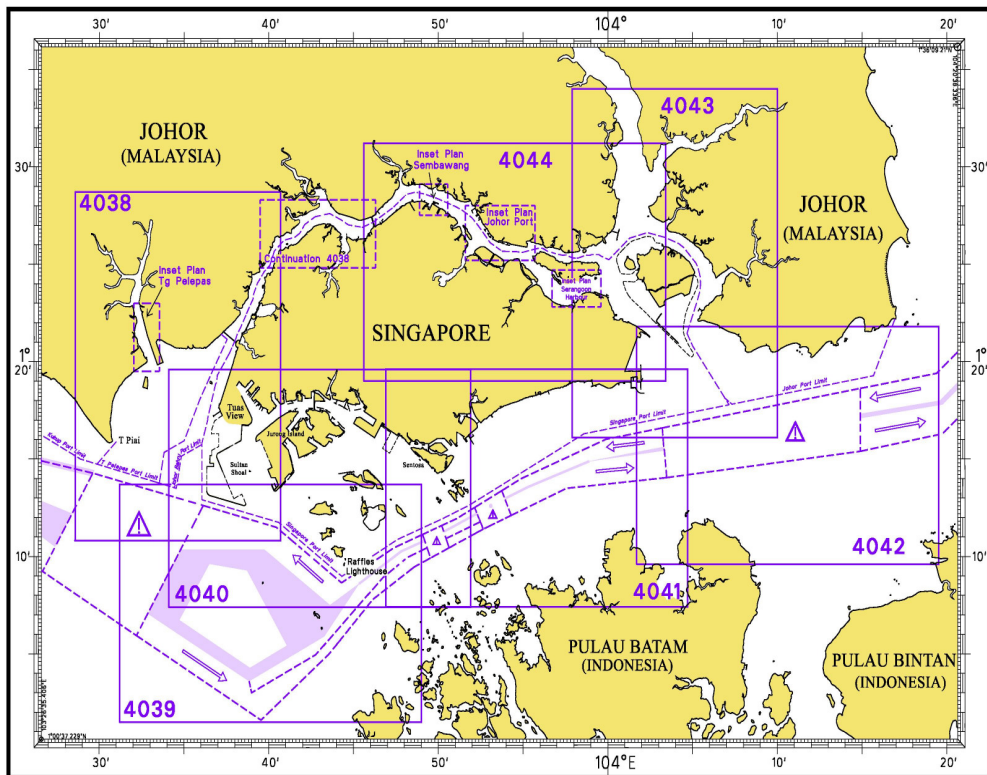
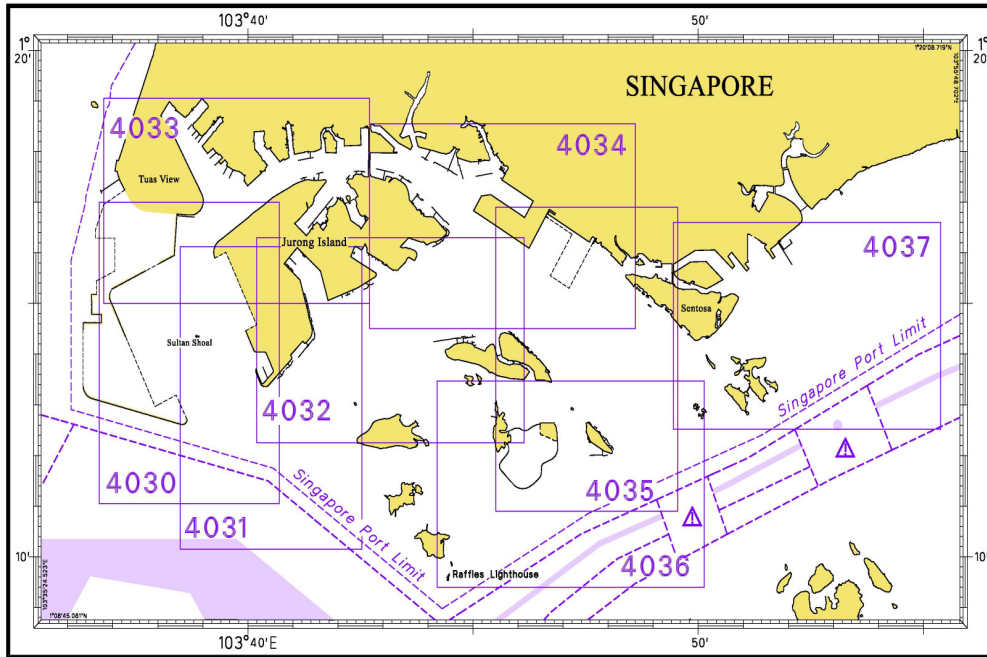
SINGAPOREAN CHART CATALOGUE

Chart No.	Chart Title	Scale 1:	Date Published of Latest Edition
1	* Symbols Abbreviations Terms and S-57 Objects	-	28/07/2011
GSP1	Anchorage and Aids to Navigation (with Area Reference)	60 000	03/05/2012
SP1	Anchorage and Aids to Navigation	60 000	03/05/2012
200	Malacca Strait - Port Klang to Tanjung Keling	200 000	22/09/2011
201	Malacca Strait - Tanjung Keling to Western Entrance of Singapore Strait	200 000	07/10/2010
202	Singapore Strait	200 000	24/09/2009
500	Malacca and Singapore Straits – Pulau Pisang to Raffles Lighthouse	75 000	07/10/2010
501	Singapore Strait – Western Part	50 000	03/05/2012
502	Singapore Strait - Eastern Part	50 000	03/05/2012
503	South China Sea - Eastern Approaches and Entrance to Singapore Strait	75 000	01/04/2010
-	Charts for Small Craft – Singapore Strait & Adjacent Waterways	10 000 to 250 000	20/01/2011

* Available at MPA website http://www.mpa.gov.sg/sites/global_navigation/publications/chart1.page

I
INDEX OF CHARTS AND PUBLICATIONS

INDEX OF DUAL BADGED CHARTS



I
INDEX OF CHARTS AND PUBLICATIONS

DUAL BADGED CHART CATALOGUE

Chart No.	Chart Title	Scale 1:	Date Published of Latest Edition
4030	Port of Singapore West Jurong Anchorages and Temasek Fairway	10 000	03/05/2012
4031	Port of Singapore Western Approaches to Jurong Island	10 000	03/05/2012
4032	Port of Singapore Sinki Fairway	10 000	03/05/2012
4033	Port of Singapore Tuas Bay, West Jurong Channel and Pesek Basin	10 000	03/05/2012
4034	Port of Singapore East Jurong Channel, Pasir Panjang Terminal and West Keppel Fairway	10 000	29/09/2011
4035	Port of Singapore Western Anchorages, Jong Fairway and Cruise Bay	10 000	27/09/2012
4036	Port of Singapore Raffles Lighthouse to The Sisters	10 000	28/04/2011
4037	Port of Singapore Keppel Harbour, Tanjong Pagar Terminal and Approaches	10 000	28/04/2011
4038	Malaysia and Singapore Johor Strait – Western Part	30 000	05/08/2010
4039	Indonesia, Singapore and Malaysia Western Approaches to Main Strait	30 000	03/05/2012
4040	Singapore, Indonesia and Malaysia, Tuas View to Pulau Sakijang Bendera (S. John's Island)	30 000	03/05/2012
4041	Singapore and Indonesia, Pulau Sebarok to Changi	30 000	03/05/2012

I
INDEX OF CHARTS AND PUBLICATIONS

DUAL BADGED CHART CATALOGUE

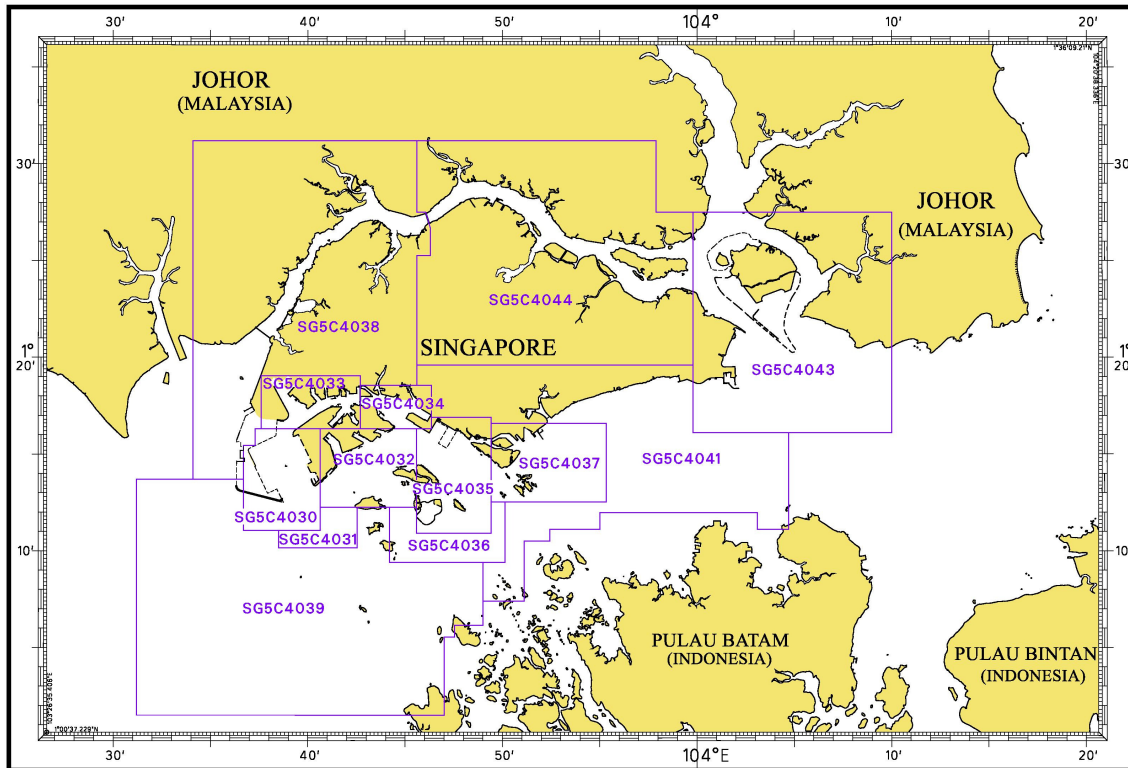
4042	Indonesia, Malaysia and Singapore, Changi to Pulau Mungging and Tanjung Buntan to Tanjung Tondang	30 000	16/08/2012
4043	Malaysia and Singapore Kuala Johor and Sungai Johor	30 000	16/08/2012
4044	Singapore and Malaysia Johor Strait - Eastern Part	30 000	16/08/2012

INDEX OF SINGAPOREAN PUBLICATIONS

Item	Title
1	Singapore Tide Tables Year 2013
2	Singapore Port Information 2012/2013

I INDEX OF CHARTS AND PUBLICATIONS

INDEX OF SINGAPORE ELECTRONIC NAVIGATIONAL CHART (ENC)



COVERAGE OF SINGAPORE ELECTRONIC NAVIGATIONAL CHART (ENC)

ENC Name	ENC Coverage	ENC Edition
SG5C4030	West Jurong Anchorages and Temasek Fairway	5 th Edition (3/05/2012)
SG5C4031	Western Approaches to Jurong Island	5 th Edition (3/05/2012)
SG5C4032	Sinki Fairway	7 th Edition (3/05/2012)
SG5C4033	Tuas Bay, West Jurong Channel and Pesek Basin	5 th Edition (3/05/2012)
SG5C4034	East Jurong Channel, Pasir Panjang Terminal and West Keppel Fairway	10 th Edition (3/05/2012)
SG5C4035	Western Anchorages, Jong Fairway and Cruise Bay	12 th Edition (27/09/2012)
SG5C4036	Raffles Lighthouse to The Sisters	6 th Edition (3/05/2012)
SG5C4037	Keppel Harbour, Tanjong Pagar Terminal and Approaches	6 th Edition (3/05/2012)
SG5C4038	Johor Strait – Western Part	5 th Edition (3/05/2012)
SG5C4039	Western Approaches to Main Strait	5 th Edition (3/05/2012)
SG5C4041	Pulau Sebarok to Changi	6 th Edition (3/05/2012)
SG5C4043	Kuala Johor and Sungai Johor	8 th Edition (16/08/2012)
SG5C4044	Johor Strait – Eastern Part	8 th Edition (16/08/2012)

II NEW PUBLICATIONS

SINGAPORE TIDE TABLES YEAR 2013 PUBLISHED ON 1ST SEPTEMBER 2012

Summary of Publication

This 251-page book contains Tidal Height and Tidal Stream Predictions covering stations in Singapore port waters and along the Malacca and Singapore Straits.

This publication consists of 5 segments.

1. **High and Low Water Predictions** at the following stations:
 - a) Tanjong Pagar
 - b) Sembawang

2. **Hourly Tidal Height Predictions** at the following stations:
 - a) Tuas
 - b) Raffles Lighthouse
 - c) West Coast
 - d) Bukom
 - e) Tanjong Pagar
 - f) Tanah Merah
 - g) Tanjong Changi
 - h) Sembawang
 - i) Singapore Strait - Horsburgh Lighthouse

3. **Hourly Tidal Stream Predictions** at the following stations:
 - a) Main Strait – off Tuas View
 - b) Jong Fairway – Sisters Buoy
 - c) Main Strait – off Gusong Boarding Ground (formerly Gusong Beacon)
 - d) Sentosa
 - e) East Buran
 - f) Main Strait – Eastern Petroleum A
 - g) Kuala Johor – off Malang Tiga

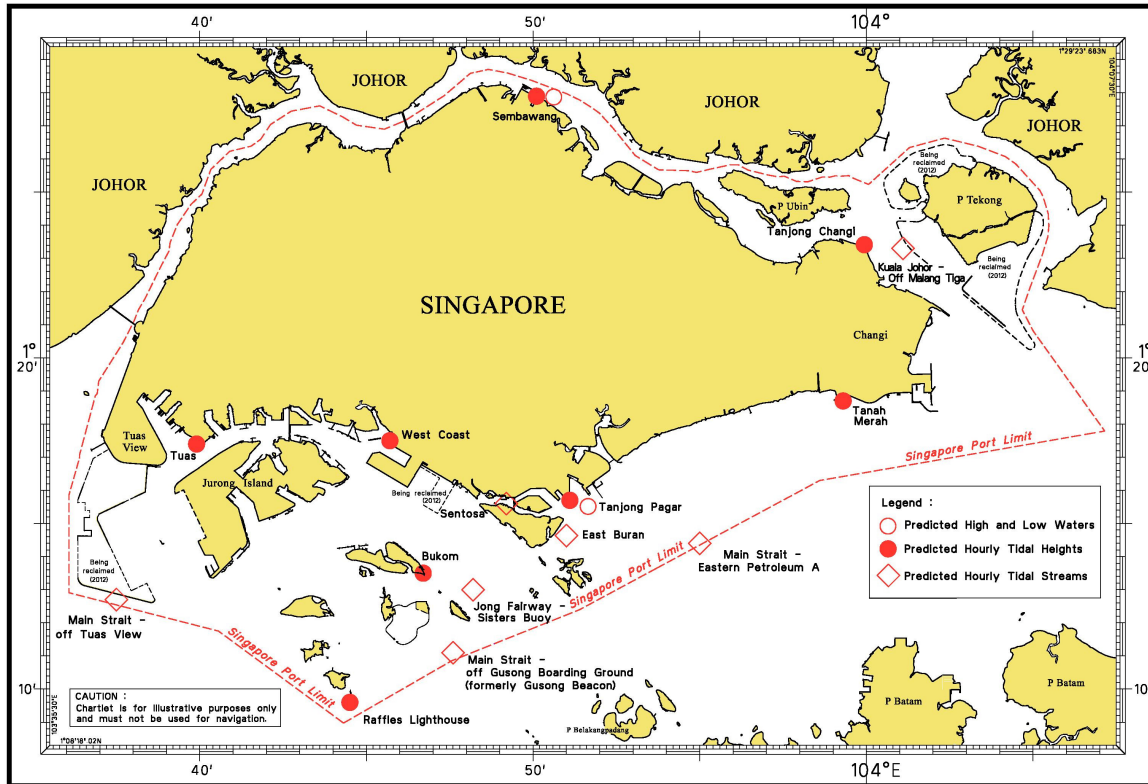
4. **Maximum and Slack Tidal Stream Predictions** at the following stations:
 - a) Malacca Strait – Off The Brothers Light
 - b) Singapore Strait – Selat Phillip
 - c) Singapore Strait – Karang Banteng (Buffalo Rock)
 - d) Singapore Strait - Horsburgh Lighthouse

5. **Malacca Strait – High and Low Water Predictions** at the following stations:
 - a) Kedah Pier, Pulau Pinang
 - b) Port Dickson
 - c) Kuala Batu Pahat

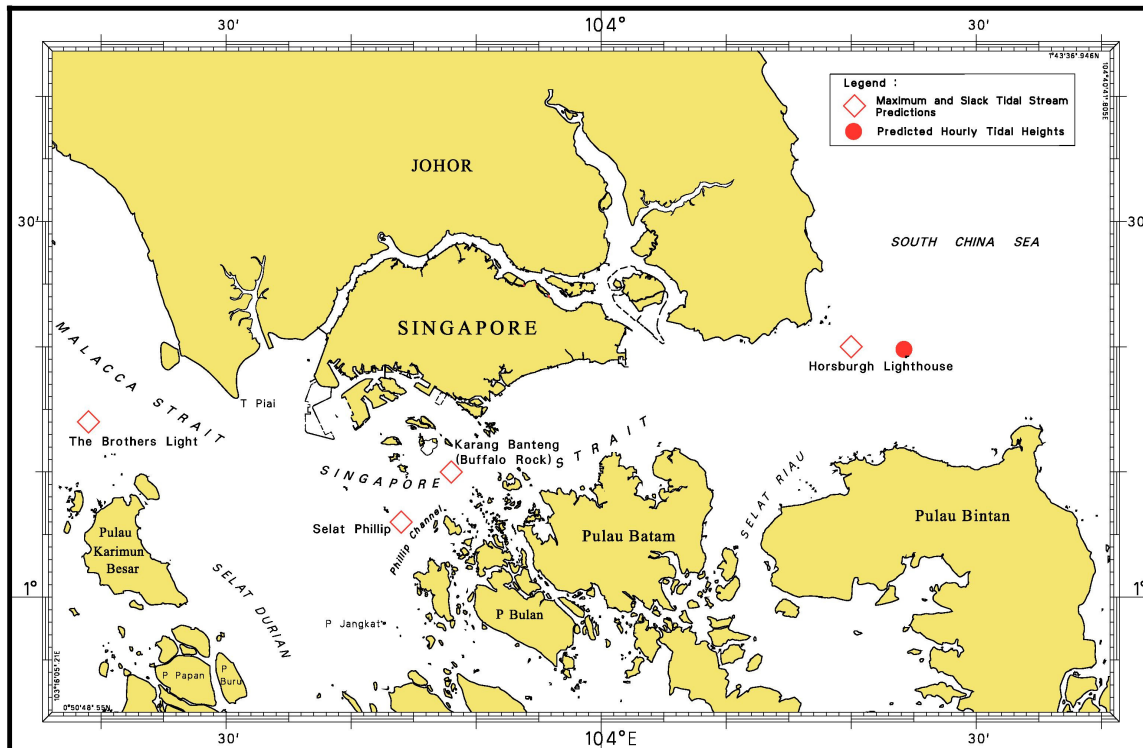
The locations of the above stations are shown in the chartlets below:

II NEW PUBLICATIONS

Tidal Prediction Stations within Singapore port waters



Tidal Prediction Stations in Malacca and Singapore Straits



II NEW PUBLICATIONS

Tidal Prediction Stations in Malacca Strait



This publication is available from the following Chart Agents:

1. Cornes Singapore Pte Ltd
2. DPM (Singapore) Pte Ltd
3. E.W. Liner Charts & Publications Pte Ltd
4. Kelvin Hughes (Singapore) Pte Ltd
5. Motion Smith

(Please refer Page 24 for details)

II NEW PUBLICATIONS

NEW EDITION CHART TO BE PUBLISHED ON JANUARY 2013

Chart Number	:	CHARTS FOR SMALL CRAFT
Title	:	Singapore Strait and Adjacent Waterways – 2013 Edition
Date Published	:	10 th January 2013
Size of chart	:	600 x 400 mm
Remarks	:	<p>The publication contains 12 Small Craft Charts and related nautical information bounded into an atlas. The symbols, abbreviations and term depicted on these charts are consistent with the International Hydrographic Organization Chart Standards and Specifications. (Refer MPA website http://www.mpa.gov.sg/sites/global_navigation/publications/chart1.page)</p> <p>Symbols for the locations of pleasure craft facilities and areas for sea sport activities such as board sailing, dinghy sailing, keelboat sailing, power-boating and water-skiing are also included and highlighted in red.</p> <p>Chart of the same publication Edition 2011/2012 published on 20th January 2011 would be superseded.</p>

II
NOTICES TO MARINERS AND CHART CORRECTIONS


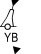
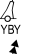
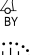


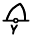

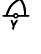
*(NM 1/2013) NUMERICAL INDEX TO NOTICES TO MARINERS OF 2012 (1 TO 109)

MONTH	NOTICES TO MARINERS NO.
JANUARY 2012	1 to 7
FEBRUARY 2012	8 to 20
MARCH 2012	21 to 29
APRIL 2012	30 to 42
MAY 2012	43 to 51
JUNE 2012	52 to 55
JULY 2012	56 to 59
AUGUST 2012	60 to 72
SEPTEMBER 2012	73 to 79
OCTOBER 2012	80 to 87
NOVEMBER 2012	88 to 94
DECEMBER 2012	95 to 109



CHART NO.	PUBLISHED	YEAR	NOTICES TO MARINERS NO.
GSP1, SP1	7 Ed 3/05/12	2012	60-61-62-73-80-81-82-88-95-96-97-98
200	3 Ed 22/09/11	2012	10-23-24-25-43-63-74
201	4 Ed 7/10/10	2012	24-44-45-99
202	6 Ed 24/09/09	2012	30-33-34-52-64-65-89-98-99-100-101
500	6 Ed 7/10/10	2012	33-35-36P-80-99-102
501	6 Ed 3/05/12	2012	80-96-98-103
502	6 Ed 3/05/12	2012	52-66-97-100-101
503	4 Ed 1/04/10	2012	65-67-101

GSP1/SP1	7 Ed 3/05/12 Last NM 98/2012	(HD/HE025/127/2012)	*NM 2/2013
Insert	Automatic Identification System, AIS , at light-beacon	(a)	1°14'05'N 103°43'31'E
Amend	light range 10M for 8M	(a)	above

II NOTICES TO MARINERS AND CHART CORRECTIONS

		(Indonesia Notice No. 50/421/2012)	NM 3/2013
Delete	 <i>Q(3)10s</i>  <i>Q(6)+LFl.10s</i>  <i>Q(9)15s</i>  <i>Q(9)15s</i> with symbol Racon(D)  <i>Wk</i>	<p><i>Q(3)10s</i> 1°13'30'N 103°57'93'E</p> <p><i>Q(6)+LFl.10s</i> 1°13'08'N 103°57'70'E</p> <p><i>Q(9)15s</i> 1°13'30'N 103°57'50'E</p> <p><i>Q(9)15s</i> with symbol Racon(D) 1°13'45'N 103°57'70'E</p> <p><i>Wk</i> 1°13'38'N 103°57'74'E</p>	
200	3 Ed 22/09/11 Last NM 74/2012	(Admiralty Notice No. 49/5514/2012)	NM 4/2013
Move	 <i>LFl.10s</i> , from: to:	<p>2°49'00'N 101°14'08'E</p> <p>2°49'00'N 101°14'80'E</p>	
202	6 Ed 24/09/09 Last NM 101/2012	(Admiralty Notice No. 51/5721/2012)	NM 5/2013
Insert	radar beacon, Racon(Q) , at light-beacon	1°09'58'N 104°11'36'E	
		(Admiralty Notice No. 51/5722/2012)	NM 6/2013
Insert	limit of anchorage area, pecked line joining:	<p>(a) 1°01'00'N 103°34'75'E (existing limit)</p> <p>(b) 0°56'88'N 103°35'60'E</p> <p>(c) 1°01'00'N 103°37'75'E (existing limit)</p>	
Move	 <i>Fl.Y.3s</i> symbol  from: to:	<p>(b) above</p> <p>1°01'34'N 103°35'93'E</p> <p>0°59'70'N 103°36'00'E</p>	
Delete	former limit of anchorage area, pecked line, joining:	<p>(a) above</p> <p>(d) 1°01'88'N 103°35'60'E</p> <p>(c) above</p>	
	 <i>Fl.Y.3s</i>	(d) above	
500	6 Ed 7/10/10 Last NM 102/2012	(HD/HE025/127/2012)	*NM 2/2013
Insert	Automatic Identification System, AIS , at light-beacon	(a) 1°14'05'N 103°43'31'E	
Amend	light range 10M for 8M	(a) above	

II
NOTICES TO MARINERS AND CHART CORRECTIONS

501	6 Ed 3/05/09 Last NM 103/2012	(HD/HE025/127/2012)	*NM 2/2013
Insert	Automatic Identification System, AIS , at light-beacon	(a)	1°14·05'N 103°43·31'E
Amend	light range 10M for 8M	(a) above	
		(Admiralty Notice No. 51/5722/2012)	NM 6/2013
Insert	limit of anchorage area, pecked line joining:		1°01·00'N 103°34·75'E (existing limit)
			0°58·36'N 103°35·29'E (chart border)
	limit of anchorage area, pecked line joining:		0°58·36'N 103°36·37'E (chart border)
			1°01·00'N 103°37·75'E
Move	symbol  from:		1°01·34'N 103°35·93'E
	to:		0°59·70'N 103°36·00'E
Delete	former limit of anchorage area, pecked line, joining:		1°01·00'N 103°34·75'E
			1°01·88'N 103°35·60'E
			1°01·00'N 103°37·75'E
	 Fl.Y.3s		1°01·88'N 103°35·60'E

502	6 Ed 3/05/12 Last NM 101/2012	(Indonesia Notice No. 50/421/2012)	NM 3/2013
Delete	 Q(3)10s		1°13·30'N 103°57·93'E
	 Q(6)+LFl.10s		1°13·08'N 103°57·70'E
	 Q(9)15s		1°13·30'N 103°57·50'E
	 Q(9)15s with symbol Racon(D)		1°13·45'N 103°57·70'E
			1°13·38'N 103°57·74'E
		(Admiralty Notice No. 51/5721/2012)	NM 5/2013
Insert	radar beacon, Racon(Q) , at light-beacon		1°09·60'N 104°11·34'E

II
TEMPORARY AND PRELIMINARY NOTICES

Nil

III NAVIGATIONAL INFORMATION

*(NM 7/2013) SINGAPORE PORT MARINE NOTICES

The following Port Marine Notices have been shortlisted, as they would be of particular interest to mariners.

These notices can be accessed directly from MPA website:

http://www.mpa.gov.sg/sites/port_and_shipping/circulars_and_notices/port_marine_notices.page

PMN No.	Subject
85/2012	Coastal protection and restoration of mangrove biodiversity at Pulau Tekong.
86/2012	Construction of sea water intake structure off Jurong Island.
87/2012	Marine construction works off Marina Barrage.
91/2012	Dredging works at Gul Basin off Keppel Shipyard.
95/2012	Reclamation at Pulau Tekong.
96/2012	Restoration work along shoreline of Pulau Ubin.
100/2012	Dredging works off Pasir panjang Ferry Terminal.
110/2012	Dredging works at ST Marine Waterfront off Tuas Bay.
115/2012	Reclamation work at Tuas View Extension.
120/2012	Construction works at Cleanseas jetty on Pulau Sebarok.
129/2012	Reclamation of Jurong Island Phase 4 and construction of jetty off Temasek Fairway.
130/2012	Construction of secondary SLNG Terminal at Jurong Island.
138/2012	Construction of Floating Sea Barrier at Sentosa Cove.
144/2012	Dredging works off Sembawang Shipyard, Johor Strait.
146/2012	Repair works of Wharf 6 at Shell Terminal, Pulau Bukom.
155/2012	Soil investigation works off Tuas View.
156/2012	Construction of Solid Handling Pier and Protection Bund at Ayer Chawan Basin, Jurong Island.
157/2012	Reclamation of Tuas View Extension.
160/2012	Construction of Changi East Finger Extension.
168/2012	Submarine cable repair off Pulau Busing.
172/2012	Construction of sea water intake structure off Tuas View.
174/2012	Dredging works at Tanjong Pagar, Keppel and Brani Terminals.
176/2012	Soil investigation works in West Jurong Channel.

III NAVIGATIONAL INFORMATION

177/2012	Soil investigation works in Benoi Basin.
178/2012	Dredging works off Pulau Bukom.
179/2012	Construction works at Raffles Pier off Keppel Shipyard.
183/2012	Dredging works off Pasir Panjang Terminal.
184/2012	Reclamation at Pasir Panjang Terminal and Pasir Panjang Wharves.
185/2012	Repair and restoration work to existing rock bund at Kusu Island.

***(NM 8/2013) STRAITS OF MALACCA AND SINGAPORE ROUTEING SYSTEM**
Information concerning schemes shown on Singaporean Charts.
(Former NM 1/5/2012 is cancelled)

1. The information concerning the Straits of Malacca and Singapore Routeing System are charted in the Singaporean Charts 200, 201, 202, 500, 501, 502, 503 and Dual Badged Charts 4038, 4039, 4040, 4041, 4042 and 4043. All positions are referred to World Geodetic System 1984 (WGS 84) datum.
 2. The description of the Traffic Separation Scheme and the rules for vessels navigating through the Straits of Malacca and Singapore are published in the Singapore Port Information 2012/2013.
-

***(NM 9/2013) SINGAPOREAN PRINT-ON-DEMAND (POD) CHARTS**

Print-On-Demand (POD) Charts are the most up-to-date paper nautical charts printed for navigational use. These nautical charts are produced in accordance with the International Hydrographic Organisation (IHO) chart specifications. These official nautical charts are continually updated to the latest Notices to Mariners before they are printed and sold to users.

These POD Charts include GSP1, SP1, 200, 201, 202, 500, 501, 502 and 503.

BENEFITS TO OUR CUSTOMERS

Convenience

Customers need not make numerous hand corrections to the nautical charts before use. In addition the updated POD Charts are more accurate and reliable than offset printed charts with hand corrections.

Clarity

Clarity in the presentation of updated information as compared to lithographic printed charts, where in some cases there are several overlapping corrections over existing information.

Coverage

The POD Charts cover the Malacca and Singapore Straits, from One Fathom Bank to Horsburgh Lighthouse.

III
AMENDMENTS TO PUBLICATIONS

Nil

IV
REPRINT OF RADIO NAVIGATIONAL WARNINGS

The following Radio Navigational Warnings have been shortlisted, as they would be of particular interest to mariners.

TT058

BUFFALO ROCK ISOLATED DANGER BUOY FL(2)5S AT POSITION 01°09'90"N 103°48'10"E . TOP MARK IS MISSING AND REPORTED UNLIT.

TT071

REPORT OF A CAPSIZED SAMPAN AT APPROXIMATE POSITION 01°07'08"N 103°41'93"E.

TT073

SURVEY VESSEL " MIRA " IS CONDUCTING UNDERWATER CABLE LAYING PREPARATIONS IN THE FOLLOWING COORDINATES:

POINT 1 LAT 01°09'903"N LONG 103°34'832"E

POINT 2 LAT 01°05'883"N LONG 103°31'693"E

POINT 3 LAT 01°05'299"N LONG 103°45'262"E

POINT 4 LAT 01°10'992"N LONG 103°53'850"E

ALL VESSELS IN THE VICINITY ARE ADVISED TO KEEP A SHARP LOOKOUT AND KEEP WELL CLEAR FROM THE UNDERWATER CABLE LAYING PREPARATIONS.

TT075

BATU BERHANTI BUOY FL(2)5S IN POSITION 01°11'76"N 103°52'51"E IN THE SINGAPORE STRAITS HAS BEEN REMOVED (12 DEC 0315UTC).

TT076

RACON DELTA BUOY Q(6) LF 15 SECS IN POSITION 01°03'781"N 103°38'77"E REPORTED UNLIT.

TT173

VESSELS IN EAST JOHOR STRAIT ARE ADVISED TO NAVIGATE WITH CAUTION WHEN NEAR THE PROJECT AREAS OFF PULAU TEKONG, CHANGI AND MALANG PAPAN AS SHALLOW WATER AREAS EXIST. VESSELS ARE ADVISED TO KEEP LOOKOUT FOR TUGS AND BARGES NAVIGATING NEAR THE PROJECT AREAS AND PASSENGER FERRIES CROSSING BETWEEN CHANGI AND PULAU TEKONG AND VICINITY OF PASIR GUDANG.

TT961

VESSELS INTENDING TO CROSS THE TRAFFIC SEPARATION SCHEME(TSS) OR PRECAUTIONARY AREAS IN THE SINGAPORE STRAIT DURING THE HOURS OF DARKNESS ARE RECOMMENDED TO DISPLAY THE NIGHT SIGNALS CONSISTING OF 3 ALL-ROUND GREEN LIGHTS IN A VERTICAL LINE WITH EFFECT FROM 1ST JULY 2011 AT 0000UTC (0800SGT) AS DETAILED IN MARITIME AND PORT AUTHORITY OF SINGAPORE'S PORT MARINE CIRCULAR, 02 OF 2011 DATED 30 MAY 2011.

ISSUED BY SINGAPORE PORT OPERATIONS CONTROL CENTRE (as at 23rd December 2012)

V
**EXTRACT OF ADMIRALTY NOTICES TO MARINERS
 FOR DUAL BADGED CHARTS**

These notices can also be accessed directly from UKHO Website:

<http://www.ukho.gov.uk/ProductsandServices/MaritimeSafety/Pages/NMPublic.aspx>

5445* SINGAPORE – Temasek Fairway, Johor Strait and Town Reach – Sultan Shoal Lighthouse South-eastwards and West-south-westwards, P. Merambong North-eastwards and South-eastwards and Causeway Shoal South-eastwards – Buoyage. Wrecks. Depths.

Source: Maritime and Port Authority of Singapore

Note: On Charts 4030, 4031 and 4038 danger lines, wreck and obstruction remain unchanged.

Chart 4030 [*previous update 4803/12*] WGS84 DATUM

Insert	 Wk	1° 13'·709N., 103° 37'·672E.
Replace	depth <i>10₇</i> with depth 10	1° 14'·182N., 103° 39'·147E.

Chart 4031 [*previous update 4803/12*] WGS84 DATUM

Replace	depth <i>10₇</i> with depth 10	1° 14'·182N., 103° 39'·147E.
---------	--	------------------------------

Chart 4038 (panel A, Town Reach) [*previous update 4803/12*] WGS84 DATUM

Insert	depth 2	1° 26'·53N., 103° 45'·32E.
--------	----------------	----------------------------

Chart 4038 [*previous update 4803/12*] WGS84 DATUM


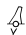
Insert	 Wk	1° 13'·71N., 103° 37'·67E.
Replace	 Wk with  Wk	1° 14'·18N., 103° 39'·15E.
Delete	 <i>Fl.Y.4s TMSI 1</i>	1° 18'·08N., 103° 36'·94E.
	 <i>Fl.Y.4s TMSI 2</i>	1° 20'·43N., 103° 37'·78E.


Chart 4040 [*previous update 4925/12*] WGS84 DATUM

Insert	 Wk	1° 13'·71N., 103° 37'·67E.
Replace	 Wk with  Wk	1° 14'·18N., 103° 39'·15E.
Delete	 <i>Fl.Y.4s TMSI 1</i>	1° 18'·08N., 103° 36'·94E.

5497* SINGAPORE STRAIT – Johor – Tanjung Ayam South-westwards and Tanjung Pengelih South-westwards- Wrecks.

Source: Malaysia Notices 9/147/12 & 9/154/12

Chart 4042 [*previous update New Edition 16/08/2012*] WGS84 DATUM

Insert	 Wk	1° 21'·60N., 104° 04'·99E.
Replace	 PA with 	1° 17'·68N., 104° 10'·68E.

V
**EXTRACT OF ADMIRALTY NOTICES TO MARINERS
 FOR DUAL BADGED CHARTS**

Chart 4043 [*previous update New Edition 16/08/2012*] WGS84 DATUM

Insert  *Wk* 1° 21'·60N., 104° 04'·99E.

5721* **INDONESIA – Sumatera – Selat Durian and Selat Riau – Karang Galang, Lobam KI. and Pangkit – Radar Beacons.**

Light List Vol. F, 2012/13, 1422, 1426, 1772, 1776, 1798
 ALRS Vol. 2, 2012/13, 86225, 86285, 86315, 86317, 86319: (49/12)
 Source: DG SeaComm

Chart 4042 [*previous update 5497/12*] WGS84 DATUM

Insert radar beacon, **Racon(Q)**, at light-beacon 1° 09'·53N., 104° 11'·32E.

5722* **INDONESIA – Sumatera – East Coast – Pulau Kepalajerih Westwards – Anchorage area. Buoyage.**

Source: UKHO & Indonesian Notice 29/262/11

Chart 4039 [*previous update 4803/12*] WGS84 DATUM

Delete limit of anchorage area, pecked line, joining: 1° 01'·50N., 103° 35'·23E.
 (S border)

(a) 1° 01'·88N., 103° 35'·60E.
 1° 01'·50N., 103° 36'·53E.
 (S border)



Fl.Y.3s

(a) above

Updated to Admiralty Notices to Mariners Edition No. 52 of 2012 dated 27th December 2012.

MPA ENC DISTRIBUTORS

CONTACT PERSON/ DESIGNATION	ADDRESS	TELEPHONE/FAX NO./EMAIL/WEBSITE
ChartWorld GmbH ChartWorld Asia Pacific Pte Ltd.	Atlantic Haus, Zirkusweg 1 D-20359 Hamburg Germany Frontech Centre 07-01, 15 Jalan Kilang Barat, Singapore 159357	Tel. No.: +49 40 853 58 6942 Fax No.: +49 40 853 58 6949 Email: sales@chartworld.com Tel No.: +65 6513 3500 Website : http://www.chartworld.com http://www.ecdis-as-a-service.com
DPM (Singapore) Pte Ltd	1 Maritime Square, #09-72 HarbourFront Centre, Singapore 099253	Tel. No.: +65 6270 4060 Fax No.: +65 6276 3858 Email: sales@dpmsingapore.com.sg Website: http://www.dpmsingapore.com.sg
Maritime Information Systems (MARIS) Maritime Information Systems AS (MARIS)	52, Telok Blangah Road #01-06, Telok Blangah House, Singapore 058809 Danholmen 25, 3128 Notteroy, Norway	Tel. No.: +65 6276 1472 Fax No.: +65 6276 1473 Email: : support@maris.sg Website: http://www.maris.no Tel. No.: +47 33 30 42 50 Fax No.: +47 33 30 42 51 Email: : sales@maris.no Website: http://www.maris.no
Motion Smith	15 Jalan Kilang Barat #08-01/05 Frontech Centre, Singapore 159357	Tel. No.: +65 6220 5098 Fax No.: +65 6225 4902 Email: sales@motsmith.com Website: http://www.motsmith.com
Transas Marine Pacific Pte Ltd	Cyber Centre 16 & 18 Jalan Kilang Barat Singapore 159358	Tel. No.: +65 6271 0200 Fax No.: +65 6271 7300 Email: dominic@transas.com.sg Website: http://www.transas.com.sg
Vector Services Pte Ltd	196 Pandan Loop, #06-29 Pantech Business Hub Singapore 128384	Tel. No.: +65 6777 3602 Fax No.: +65 6777 9203 Email: kwchoy@vector-services.sg
Japan Hydrographic Association Electronic Charts Division	Daiichi Sogo Bldg, 6F 1-6-6, Hanedakuko, Ota-ku Tokyo 144-0041, Japan	Tel. No.: +81 3 5708 7093 Fax No.: +81 3 5708 7094 Email: shimizu-6kj@jha.jp Website: http://www.jha.or.jp/en/jha/
Jeppesen Norway AS	P.O Box 212 , N-4371 Egersund, Norway	Tel No.: +47 51 46 4700 Fax No: +47 51 46 4701 Email: license.marine@jeppesen.com Website : http://www.jeppesen.com/marine
PRIMAR STAVANGER	Lervigsveien 36, P.O Box 60, N-4001 Stavanger, Norway	Tel. No.: +47 51 93 9500 Fax No.: +47 51 93 9501 Email: sales@ecc.no Website : http://www.primar.no
The United Kingdom Hydrographic Office	Admiralty Way, Taunton, Somerset, TA1 2DN United Kingdom	Tel. No.: +44 1823 33 7900 Fax No.: +44 1823 28 4077 Emails: ENC.SalesReports@ukho.gov.uk Website: http://www.ukho.gov.uk

Chart Agents for the Maritime and Port Authority of Singapore
Nautical Charts and Publications

Please approach any of the appointed chart agents to purchase the Singapore Nautical Charts and Publications.

CHART AGENT	ADDRESS	TELEPHONE/FAX NO./EMAIL/WEBSITE
Cornes Singapore Pte Ltd	10 Anson Road #23-06/6A International Plaza Singapore 079903	Tel. No.: +65 6223 8320 Fax No.: +65 6223 8321 Email: sales9850@cspl.sg Website: http://www.cornes_charts.com
DPM (Singapore) Pte Ltd	1 Maritime Square, #09-72 HarbourFront Centre, Singapore 099253	Tel. No.: +65 6270 4060 Fax No.: +65 6276 3858 Email: sales@dpmsingapore.com.sg Website: http://www.dpmsingapore.com.sg
E.W. Liner Charts & Publications Pte Ltd	102F, Pasir Panjang Road, #08-01, Citilink Warehouse Complex, Singapore 118530	Tel. No.: +65 6323 0773 Fax No.: +65 6323 0775 Email: ewliner@singnet.com.sg Website: http://www.ewliner.com
Kelvin Hughes (Singapore) Pte Ltd	896 Dunearn Road #03-05 Sime Darby Centre Singapore 589472	Tel. No.: +65 6545 9880 Fax No.: +65 6545 8892 Email: leslie.khoo@kelvinhughes.com.sg Website: http://www.kelvinhughes.com
Motion Smith	15 Jalan Kilang Barat #08-01/05 Frontech Centre Singapore 159357	Tel. No.: +65 6220 5098 (After office hours:+65 8163 9993) Fax No.: +65 6225 4902 Email: sales@motsmith.com Website: http://www.motsmith.com

HYDROGRAPHIC NOTE - Instructions

1. Mariners are requested to notify the Chief Hydrographer, Maritime and Port Authority of Singapore, when new or suspected dangers to navigation are discovered, changes are observed in aids to navigation or where corrections to nautical publications may be necessary. Reports, which cannot be confirmed or are lacking in certain details should not be withheld.
2. Any ambiguities of time, positioning and depth should be stressed and any firm expectation of being able to check the information provided on a following voyage should be mentioned.
3. Mariners using satellite position fixing systems, eg. GPS, should provide details of equipment and datum used (where applicable). Where bearings (true or magnetic) are taken visually or by radar to fix a position, it should include more than two objects in order to provide a check on its accuracy. A position may also be defined by bearing and distance from a conspicuous object eg. beacon, lighthouse etc.
4. The note should include a tracing or a digital image of the chart used and the details should be clearly marked.
5. Echo sounders frequently register greater depths than the advertised maximum depth for the equipment, eg. a trace appearing at 50 metres may be in fact be 550 metres or even 1050 metres for equipment whose maximum depth is 500 metres. Erroneous depths caused by 2nd transmission error can usually be recognised by the following:
 - (a) the tracing being weaker than normal for the depth registered,
 - (b) the trace appearing to pass through the transmission line,
 - (c) the feathery nature of the trace.
6. Upon receipt of a hydrographic note, a Notice to Mariners may be issued. The sender's vessel or name is quoted as the source unless the same information is also received in foreign Notices to Mariners.
7. Reports of shoals, uncharted dangers and defects in aids to navigation may also be made to the appropriate Singapore Port Operations Control Centre on VHF Channels 10, 12, 14, 68 or 73.

HYDROGRAPHIC NOTE

To:

Chief Hydrographer
Maritime and Port Authority of Singapore
460 Alexandra Road PSA Building #20-00
Singapore 119963

Tel : (65) 6375 1227
Fax : (65) 6278 7646
Email : hydrographic@mpa.gov.sg

Sender's Contact Details :

Date :

Name of Vessel :

Address of Sender :

Tel : Fax :

Email :

Nature of Observation :

General Location :

Subject :

Position : Lat. Long.

Charts Used :

Date & Time of Observation :

Details :

.....

.....

.....

Attachment :

Equipment Used :

Type of Position Fixing : GPS / DGPS Others :

Type of Echo Sounder :

Name and Signature :

Ship's/Company's Stamp :