



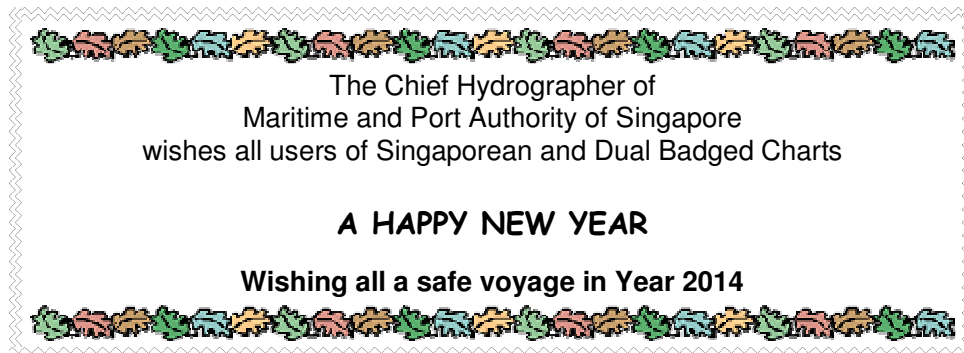
SINGAPOREAN NOTICES TO MARINERS

SECTION	CONTENT	Page
I	Index of Charts & Publications	1
II	New Publications	9
	Notices to Mariners and Chart Corrections	14
	Temporary and Preliminary Notices	16
III	Navigational Information	17
	Amendments to Publications	19
IV	Reprint of Radio Navigational Warnings	20
V	Extract of Admiralty Notices to Mariners for Dual Badged Charts	21

The monthly Notices to Mariners contain corrective information affecting charts published by the Hydrographic Department, Maritime and Port Authority of Singapore. The information contained in these Notices should be updated on the charts affected. Notices under Section II apply only to the particular Singaporean Chart(s) indicated.

Mariners are requested to notify the Chief Hydrographer, Maritime and Port Authority of Singapore, immediately on the discovery of new dangers or suspected dangers to navigation and of changes or defects in aids to navigation. See Hydrographic Note on back page.

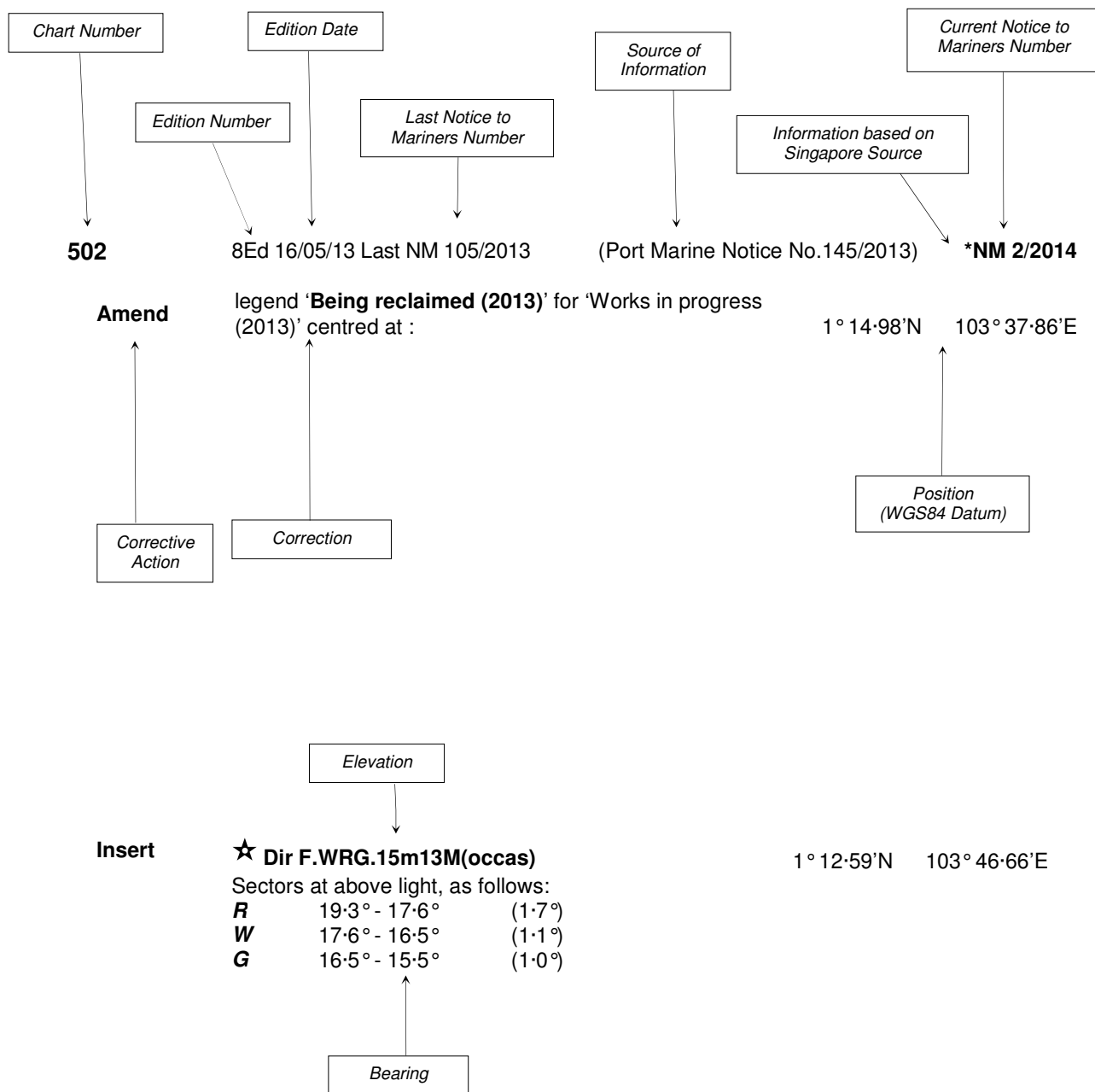
The monthly Singaporean Notices to Mariners can be accessed directly from the MPA website:
[www.mpa.gov.sg/sites/port_and_shipping/circulars_and_notices/singapore_notices_to_mariners\(ntm\).page](http://www.mpa.gov.sg/sites/port_and_shipping/circulars_and_notices/singapore_notices_to_mariners(ntm).page)



Hydrographic Department
Maritime and Port Authority of Singapore
460 Alexandra Road
PSA Building #20-00
Singapore 119963
Tel: (65) 6375 1227
Fax: (65) 6278 7646

EXPLANATION OF FORMAT

The elements of a typical chart correction are explained below.



Notes:

- a) Notice to Mariners number followed by:
 - T** indicates a Temporary Notice (eg. *NM 3T/2014).
 - P** indicates a Preliminary Notice (eg. *NM 4P/2014).
- b) Bearings are true reckoned clockwise from 000° to 359°; those relating to lights are from seaward.
- c) Heights and elevations are above Mean High Water Springs.

I
INDEX OF CHARTS AND PUBLICATIONS

INDEX OF AFFECTED CHARTS

DESCRIPTION	NOTICE NO.	PAGE NO.
Index of Singaporean Charts	-	3
Index of Dual Badged Charts	-	5
Index of Singapore Electronic Navigational Chart (ENC)	-	8
Singapore Tide Tables Year 2014	-	9 to 11
Singapore Port Information Year 2014/2015	-	12
New Edition Charts for Small Craft 2014	-	13
Numerical Index to Notices to Mariners of 2013	*1	14
Singaporean Chart 200	2	15
Singaporean Chart 500	*3	15
Singaporean Chart 501	*3	15
Temporary and Preliminary Notices	*4P	16
Singapore Port Marine Notices	*5	17
Singaporean Print-On-Demand (POD) Charts	*6	18
Amendments to Publications	-	19
Reprint of Radio Navigational Warnings	-	20
Extract of Admiralty Notices to Mariners for Dual Badged Charts	-	21
Singapore Electronic Navigational Chart (ENC) Distributors	-	22
Chart Agents for the Maritime and Port Authority of Singapore Nautical Charts and Publications	-	23

*Denotes information are based on Singaporean source.

I
INDEX OF CHARTS AND PUBLICATIONS

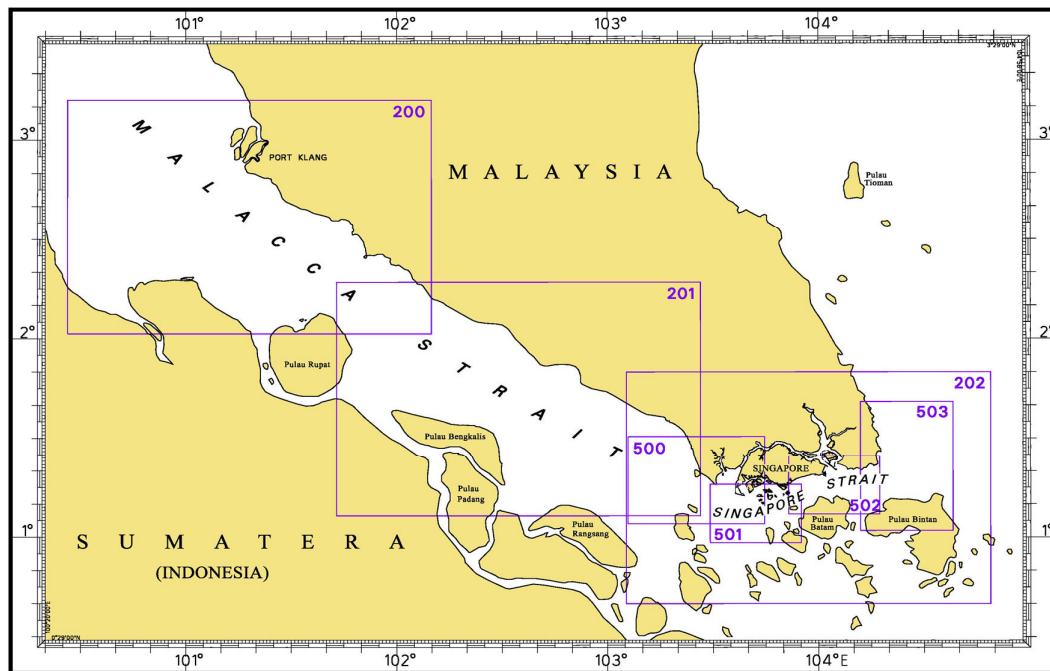
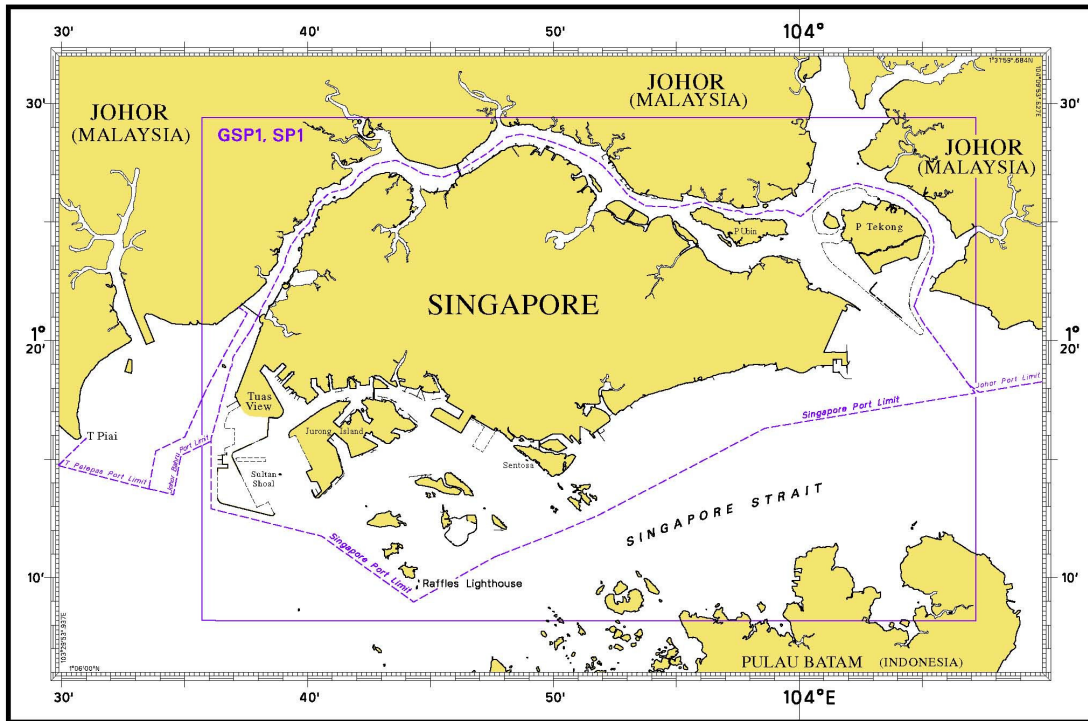
INDEX OF NOTICES

NOTICE NO.	DESCRIPTION	PAGE NO.
-	Index of Singaporean Charts	3
-	Index of Dual Badged Charts	5
-	Index of Singapore Electronic Navigational Chart (ENC)	8
-	Singapore Tide Tables Year 2014	9 to 11
-	Singapore Port Information Year 2014/2015	12
-	New Edition Charts for Small Craft 2014	13
*1	Numerical Index to Mariners of 2013	14
2	Singaporean Chart 200	15
*3	Singaporean Chart 500	15
*3	Singaporean Chart 501	15
*4P	Temporary and Preliminary Notices	16
*5	Singapore Port Marine Notices	17
*6	Singaporean Print-On-Demand (POD) Charts	18
-	Amendments to Publications	19
-	Reprint of Radio Navigational Warnings	20
-	Extract of Admiralty Notices to Mariners for Dual Badged Charts	21
-	Singapore Electronic Navigational Chart (ENC) Distributors	22
-	Chart Agents for the Maritime and Port Authority of Singapore Nautical Charts and Publications	23

* Denotes information are based on Singaporean source.

I INDEX OF CHARTS AND PUBLICATIONS

INDEX OF SINGAPOREAN CHARTS



Notes:
Updated SINGAPOREAN Charts are available through our Print-On-Demand (POD) Chart Service. For more information, refer to Section III – Navigational Information. These charts can be purchased from our authorised Chart Agents.

I
INDEX OF CHARTS AND PUBLICATIONS

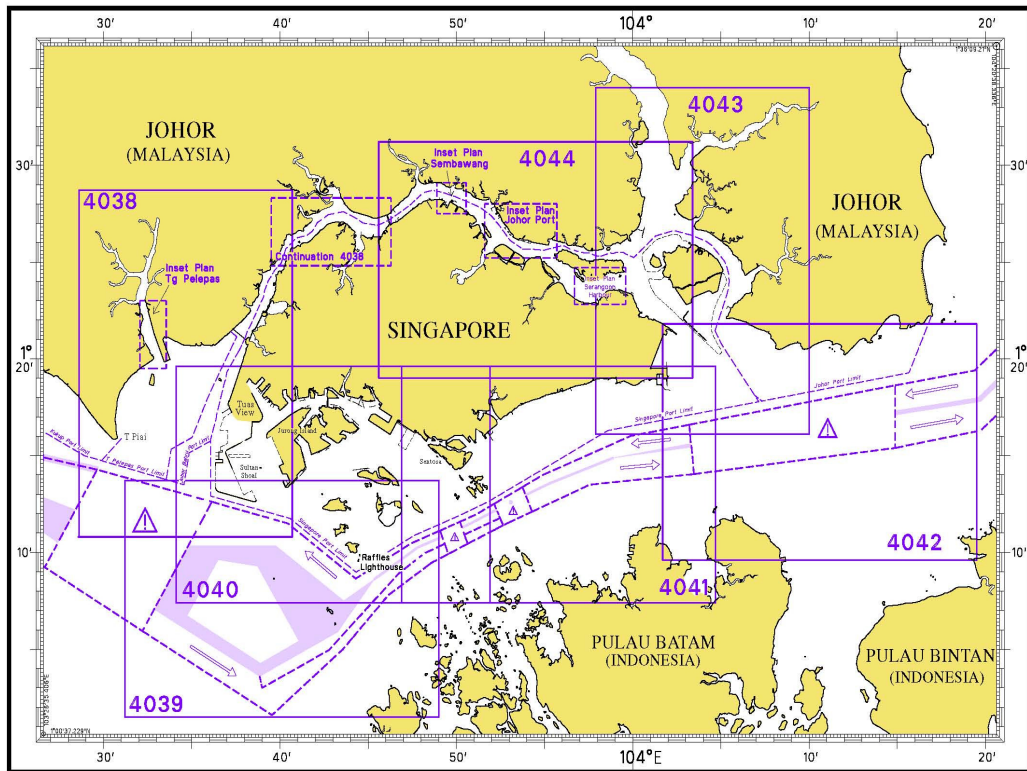
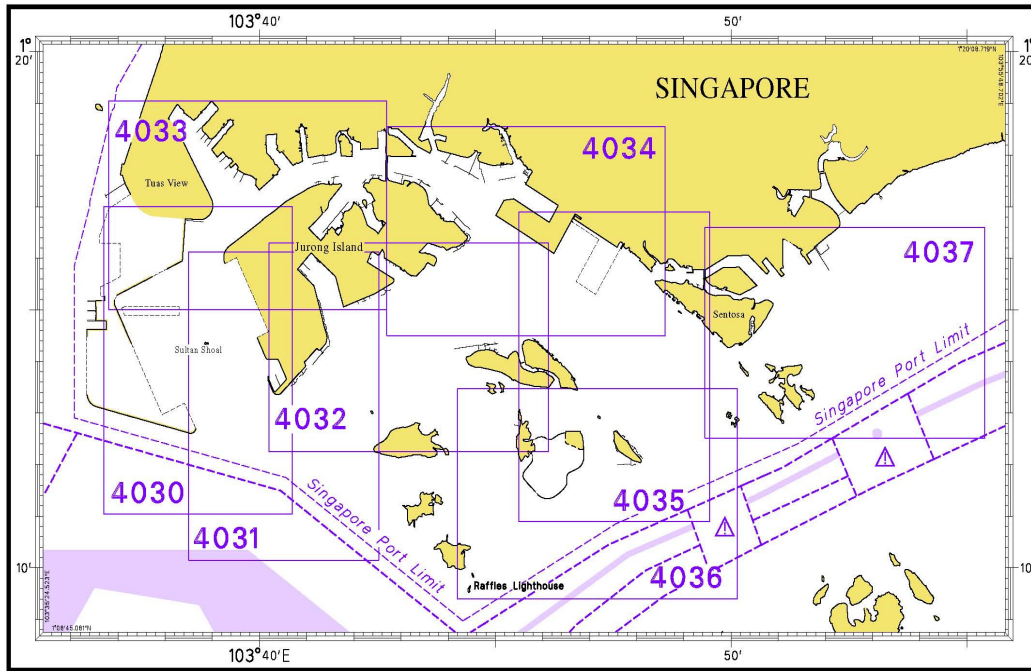
SINGAPOREAN CHART CATALOGUE

Chart No.	Chart Title	Scale 1:	Date Published of Latest Edition
GSP1	Anchorage and Aids to Navigation (with Area Reference)	60 000	16/05/2013
SP1	Anchorage and Aids to Navigation	60 000	16/05/2013
200	Malacca Strait - Port Klang to Tanjung Keling	200 000	22/09/2011
201	Malacca Strait - Tanjung Keling to Western Entrance of Singapore Strait	200 000	07/10/2010
202	Singapore Strait	200 000	26/09/2013
500	Malacca and Singapore Straits – Pulau Pisang to Raffles Lighthouse	75 000	26/09/2013
501	Singapore Strait – Western Part	50 000	03/05/2012
502	Singapore Strait - Eastern Part	50 000	03/05/2012
503	South China Sea - Eastern Approaches and Entrance to Singapore Strait	75 000	01/04/2010
-	Charts for Small Craft – Singapore Strait & Adjacent Waterways	10 000 to 200 000	02/01/2014
-	* Symbols Abbreviations Terms and S-57 Objects used on Singapore Nautical and Electronic Navigational Charts.	-	28/07/2011

* Available at MPA website http://www.mpa.gov.sg/sites/global_navigation/publications/chart1.page

I INDEX OF CHARTS AND PUBLICATIONS

INDEX OF DUAL BADGED CHARTS



I
INDEX OF CHARTS AND PUBLICATIONS

DUAL BADGED CHART CATALOGUE

Chart No.	Chart Title	Scale 1:	Date Published of Latest Edition
4030	Port of Singapore West Jurong Anchorages and Temasek Fairway	10 000	03/05/2012
4031	Port of Singapore Western Approaches to Jurong Island	10 000	03/05/2012
4032	Port of Singapore Sinki Fairway	10 000	03/05/2012
4033	Port of Singapore Tuas Bay, West Jurong Channel and Pesek Basin	10 000	03/05/2012
4034	Port of Singapore East Jurong Channel, Pasir Panjang Terminal and West Keppel Fairway	10 000	11/04/2013
4035	Port of Singapore Western Anchorages, Jong Fairway and Cruise Bay	10 000	26/09/2013
4036	Port of Singapore Raffles Lighthouse to The Sisters	10 000	25/04/2013
4037	Port of Singapore Keppel Harbour, Tanjong Pagar Terminal and Approaches	10 000	25/04/2013
4038	Malaysia and Singapore Johor Strait – Western Part	30 000	26/09/2013
4039	Indonesia, Singapore and Malaysia Western Approaches to Main Strait	30 000	03/05/2012
4040	Singapore, Indonesia and Malaysia, Tuas View to Pulau Sakijang Bendera (S. John's Island)	30 000	09/05/2013
4041	Singapore and Indonesia, Pulau Sebarok to Changi	30 000	09/05/2013

I
INDEX OF CHARTS AND PUBLICATIONS

DUAL BADGED CHART CATALOGUE

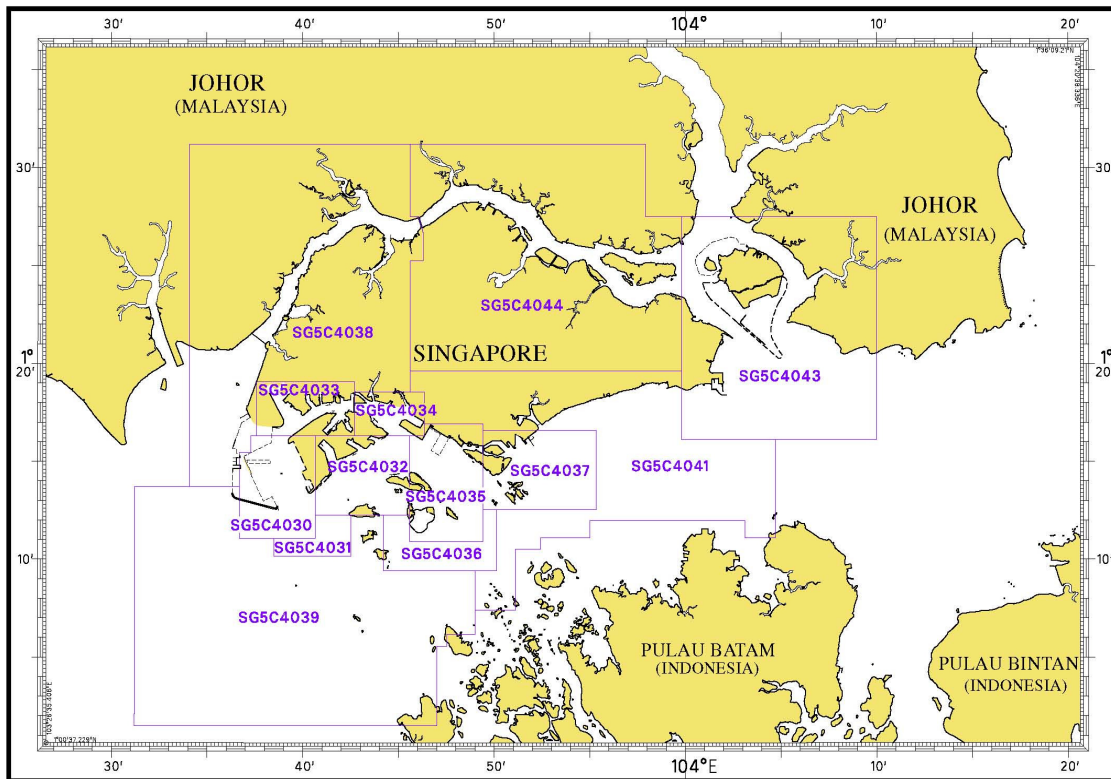
4042	Indonesia, Malaysia and Singapore, Changi to Pulau Mungging and Tanjung Buntan to Tanjung Tondang	30 000	16/08/2012
4043	Malaysia and Singapore Kuala Johor and Sungai Johor	30 000	29/08/2013
4044	Singapore and Malaysia Johor Strait - Eastern Part	30 000	29/08/2013

INDEX OF SINGAPOREAN PUBLICATIONS

Item	Title
1	Singapore Tide Tables Year 2014
2	Singapore Port Information 2014/2015

I INDEX OF CHARTS AND PUBLICATIONS

INDEX OF SINGAPORE ELECTRONIC NAVIGATIONAL CHART (ENC)



COVERAGE OF SINGAPORE ELECTRONIC NAVIGATIONAL CHART (ENC)

ENC Name	ENC Coverage	ENC Edition
SG5C4030	West Jurong Anchorages and Temasek Fairway	5 th Edition (3/05/2012)
SG5C4031	Western Approaches to Jurong Island	5 th Edition (3/05/2012)
SG5C4032	Sinki Fairway	7 th Edition (3/05/2012)
SG5C4033	Tuas Bay, West Jurong Channel and Pesek Basin	5 th Edition (3/05/2012)
SG5C4034	East Jurong Channel, Pasir Panjang Terminal and West Keppel Fairway	11 th Edition (11/04/2013)
SG5C4035	Western Anchorages, Jong Fairway and Cruise Bay	14 th Edition (26/09/2013)
SG5C4036	Raffles Lighthouse to The Sisters	6 th Edition (3/05/2012)
SG5C4037	Keppel Harbour, Tanjong Pagar Terminal and Approaches	7 th Edition (25/04/2013)
SG5C4038	Johor Strait – Western Part	6 th Edition (26/09/2013)
SG5C4039	Western Approaches to Main Strait	5 th Edition (3/05/2012)
SG5C4041	Pulau Sebarok to Changi	7 th Edition (9/05/2013)
SG5C4043	Kuala Johor and Sungai Johor	9 th Edition (29/08/2013)
SG5C4044	Johor Strait – Eastern Part	9 th Edition (29/08/2013)

II NEW PUBLICATIONS

SINGAPORE TIDE TABLES YEAR 2014 PUBLISHED ON 4TH SEPTEMBER 2013

Summary of Publication

This 263-page book contains Tidal Height and Tidal Stream Predictions covering stations in Singapore port waters and along the Malacca and Singapore Straits. Two new stations namely Sultan Shoal and Banyan are included in this publication which consists of 5 segments.

1. **High and Low Water Predictions** at the following stations:
 - a) Tanjong Pagar
 - b) Sembawang

2. **Hourly Tidal Height Predictions** at the following stations:
 - a) **Sultan Shoal**
 - b) Raffles Lighthouse
 - c) West Coast
 - d) Bukom
 - e) Tanjong Pagar
 - f) Tanah Merah
 - g) Tanjong Changi
 - h) Sembawang
 - i) Singapore Strait – Horsburgh Lighthouse

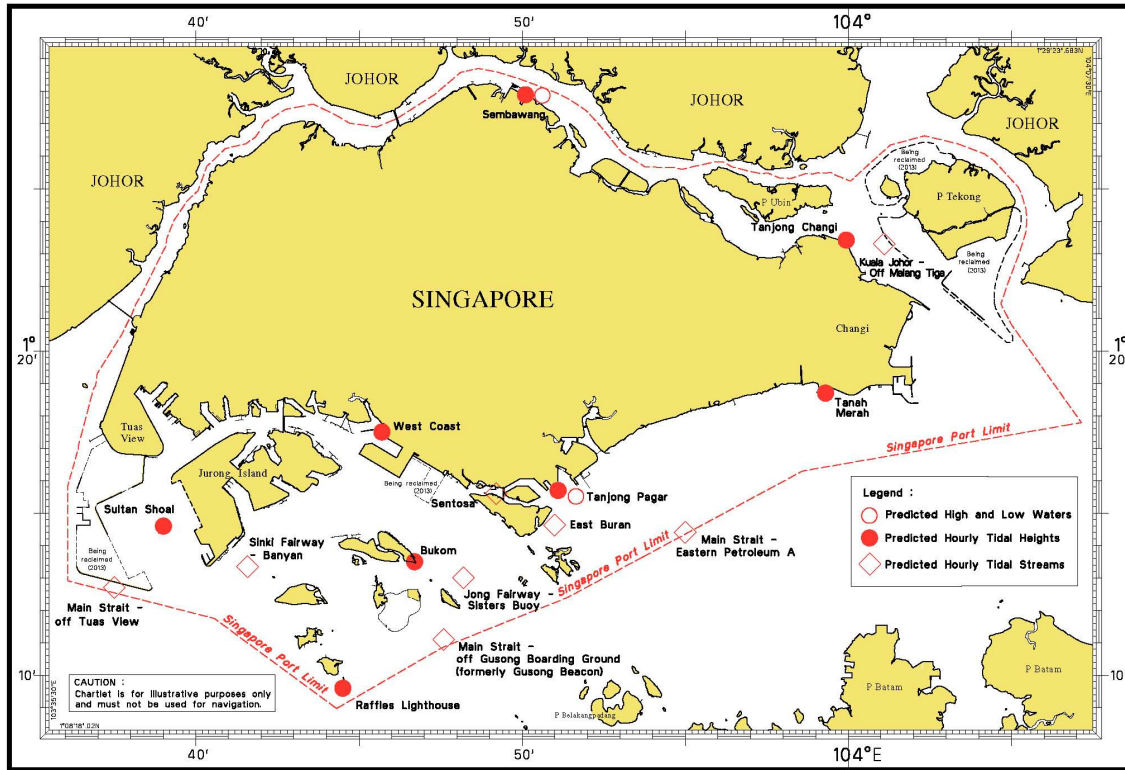
3. **Hourly Tidal Stream Predictions** at the following stations:
 - a) Main Strait – Off Tuas View
 - b) **Sinki Fairway – Banyan**
 - c) Jong Fairway – Sisters Buoy
 - d) Main Strait – Off Gusong Boarding Ground (formerly Gusong Beacon)
 - e) Sentosa
 - f) East Buran
 - g) Main Strait – Eastern Petroleum A
 - h) Kuala Johor – off Malang Tiga

4. **Maximum and Slack Tidal Stream Predictions** at the following stations:
 - a) Malacca Strait – Off The Brothers Light
 - b) Singapore Strait – Selat Phillip
 - c) Singapore Strait – Karang Banteng (Buffalo Rock)
 - d) Singapore Strait – Horsburgh Lighthouse

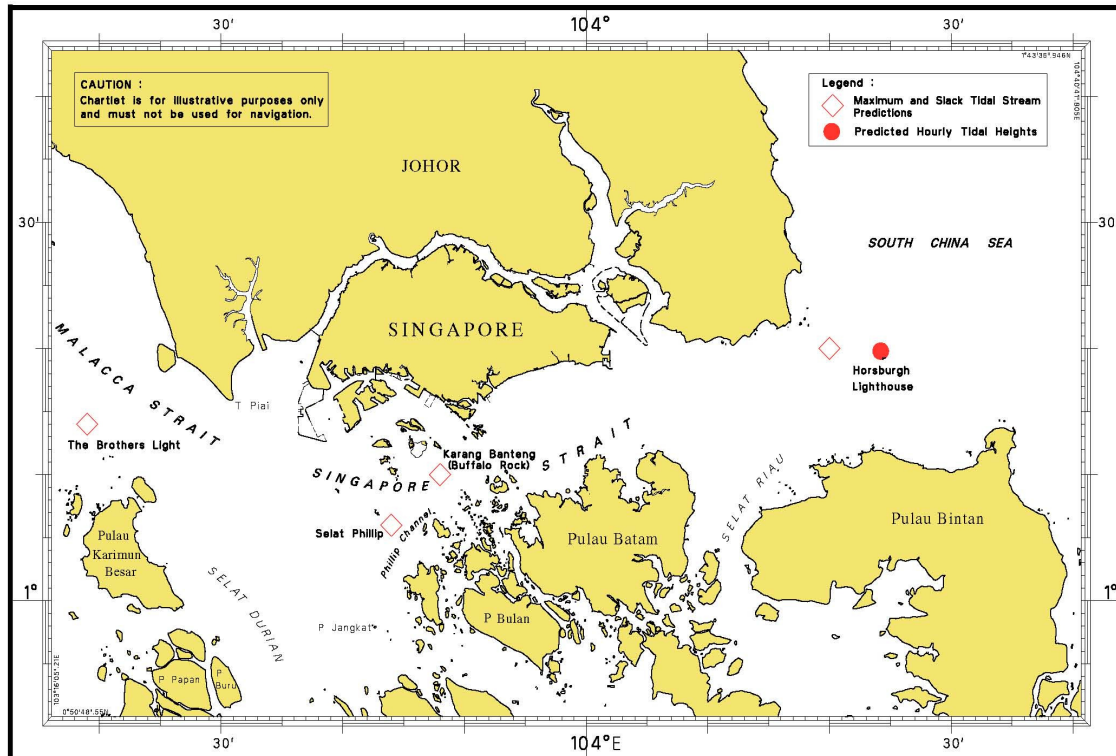
5. **Malacca Strait – High and Low Water Predictions** at the following stations:
 - a) Kedah Pier, Pulau Pinang
 - b) Port Dickson
 - c) Kuala Batu Pahat

The locations of the above stations are shown in the chartlets below:

II NEW PUBLICATIONS Tidal Prediction Stations within Singapore port waters



Tidal Prediction Stations in Malacca and Singapore Straits



II NEW PUBLICATIONS Tidal Prediction Stations in Malacca Strait



This publication is available from the following Chart Agents:

1. Cornes Singapore Pte Ltd
2. DPM (Singapore) Pte Ltd
3. E.W. Liner Charts & Publications Pte Ltd
4. Kelvin Hughes (Singapore) Pte Ltd
5. Motion Smith

Please refer Page 23 for details.

II NEW PUBLICATIONS

NEW EDITION SINGAPORE PORT INFORMATION 2014/2015 TO BE PUBLISHED ON 20TH JANUARY 2014¹.

Summary of Publication - This publication contains Port Information such as:

1. Routeing and Reporting Information

- a) Straits of Malacca and Singapore – Routeing System.
- b) Mandatory Ship Reporting In the Straits of Malacca and Singapore – Straitrep.
- c) Rules for vessels navigating during hours of darkness through the Straits of Malacca and Singapore (Recommendatory Measure).
- d) Revised reporting procedures for notification and confirmation of a vessel's arrival in Singapore
- e) Amendment to reporting procedures for vessels manoeuvring in port.
- f) Guide to VHF communication in port and Singapore Strait
- g) VHF Radio Telephone reporting Procedures for vessel manoeuvring within the Traffic Information Area in the East Johor Strait.
- h) Tall vessels' movements in the port waters surrounding Changi Airport.
- i) Height Restricted Areas in port.

2. Pilotage and Pilotage Exemption Information

3. Port Clearances and Reporting

- a) Port health clearance procedures for vessels arriving in Singapore.
- b) Port clearance formalities for arriving and departing vessels.
- c) Reporting of Marine incidents in port.
- d) Dissemination of passage plan to shipmasters.
- e) Conduct of mandatory Port Limit courses.
- f) Facilities for the collection of garbage from ships in Singapore.
- g) Singapore Port Dues.

4. Navigational Information

- a) Anchorages and fairways, least depths of anchorages in the port.
- b) The use of canoes and kayaks within the port limits of Singapore.
- c) Depths of Navigational channels, fairways, rivers and basins.
- d) Vertical and safe overhead clearances under bridges and aerial cableway.

5. Information on Aids to Navigation

- a) IALA Maritime Buoyage System
- b) Characteristics of Aids to Navigation – List of beacons, buoys and lighthouses.

6. Communication – International Code of Signals

7. Information on Wharves, Docks and Berths

8. Nautical Services and Products

- a) Index and chart catalogue of Singaporean and Dual Badged charts.
- b) Agents for Maritime and Port Authority of Singapore publications.
- c) Singapore Electronic Navigational Charts (ENC) Catalogue and Electronic Navigational Charts Distributors.

It will be useful for the following users:

Mariners, shipping community, port users and other interested users.

Frequency / Year of Publication

Once every 2 years.

This publication would be available from the following Chart Agents:

- 1) Cornes (Singapore) Pte Ltd
- 2) DPM (Singapore) Pte Ltd
- 3) E.W. Liner Charts & Publications Pte Ltd
- 4) Kelvin Hughes (Singapore) Pte Ltd
- 5) Motion Smith

¹ The published date is postponed from 18th December 2013 to 20th January 2014.

II NEW PUBLICATIONS

NEW EDITION CHART TO BE PUBLISHED ON 2ND JANUARY 2014

Chart Number : CHARTS FOR SMALL CRAFT
Title : Singapore Strait and Adjacent Waterways – 2014 Edition
Date Published : 2nd January 2014
Size of chart : 600 x 400 mm
Remarks : The publication contains 12 Small Craft Charts and related nautical information bounded into an atlas. The symbols, abbreviations and term depicted on these charts are consistent with the International Hydrographic Organization Chart Standards and Specifications.
(Refer MPA website http://www.mpa.gov.sg/sites/global_navigation/publications/chart1.page)
Symbols for the locations of pleasure craft facilities and areas for sea sport activities such as board sailing, dinghy sailing, keelboat sailing, power-boating and water-skiing are also included and highlighted in red.
Chart of the same publication Edition 2013 published on 3rd January 2013 would be superseded.

II
NOTICES TO MARINERS AND CHART CORRECTIONS

*(NM 1/2014) NUMERICAL INDEX TO NOTICES TO MARINERS OF 2013 (1 TO 110)

MONTH	NOTICES TO MARINERS NO.
JANUARY 2013	1 to 9
FEBRUARY 2013	10 to 27
MARCH 2013	28 to 39
APRIL 2013	40 to 49
MAY 2013	50 to 57
JUNE 2013	58 to 65
JULY 2013	66 to 73T
AUGUST 2013	74 to 78
SEPTEMBER 2013	79 to 84T
OCTOBER 2013	85 to 91T
NOVEMBER 2013	92 to 102
DECEMBER 2013	103 to 110

CHART NO.	PUBLISHED	YEAR	NOTICES TO MARINERS NO.
GSP1, SP1	8 Ed 16/05/13	2013	58-59-60-74-75-79-85-86-92-93-103-104-105
200	3 Ed 22/09/11	2013	4-61-67
201	4 Ed 7/10/10	2013	17-18-19-20-61-80-106-107
202	7 Ed 26/09/13	2013	94-95-96-97-105
500	7 Ed 26/09/13	2013	104-105
501	6 Ed 3/05/12	2013	2-6-22-29-32-33-40-86-92-104-105-108
502	6 Ed 3/05/12	2013	3-5-10-12-14-16-21-28-40-42-44-52-85-86-98-99
503	4 Ed 1/04/10	2013	21-94

II
NOTICES TO MARINERS AND CHART CORRECTIONS

200	3 Ed 22/09/11 Last NM 67/2013	(Admiralty Notice No. 49/5181/2013)	NM 2/2014
Insert	depth δ_7 enclosed by 10m contour		2° 33·07'N 101° 41·30'E
Amend	depth I_5 enclosed by 2m contour light-beacon to Fl.8s18m8M	(a)	2° 31·46'N 101° 45·53'E 2° 30·83'N 101° 47·20'E
Delete	depth δ_7 , close SE of:	(a)	above

500	7 Ed 26/09/13 Last NM 105/2013	(Port Marine Notice No. 145/2013)	*NM 3/2014
Replace	legend 'Works in progress (2013)' with ' Being reclaimed (2013) ' centred at :		1° 14·98'N 103° 37·74'E

501	6 Ed 3/05/12 Last NM 108/2013	(Port Marine Notice No. 145/2013)	*NM 3/2014
Replace	legend 'Works in progress (2013)' with ' Being reclaimed (2013) ' centred at :		1° 14·98'N 103° 37·74'E

II TEMPORARY AND PRELIMINARY NOTICES

***(NM 4P/2014)** : **Bukom 48" Subsea Pipeline Repair Project – (Pipeline plying between Pulau Sakeng and Pulau Sebarok)**

Purpose : Repair and replacement of pipeline plying from Pulau Bukom Kechil to Shell SBM Buoy.

1. The pipeline repair project was completed and the new positions are as follows :

Position	(Co-ordinates: WGS84)		Remarks
	Latitude (N)	Longitude (E)	
Point	01° 11.483' N	103° 47.430' E	From Shell SBM Buoy
to	01° 11.717' N	103° 47.448' E	
to	01° 11.943' N	103° 47.438' E	
to	01° 12.159' N	103° 47.383' E	
to	01° 12.385' N	103° 47.268' E	
to	01° 12.573' N	103° 47.109' E	
to	01° 12.652' N	103° 47.016' E	
to	01° 12.829' N	103° 46.749' E	Join to existing pipeline

2. Only a minimum selection of geographical positions have been listed above. Because of this, mariners are advised to proceed with caution within the general course of the pipeline.
3. Existing charted pipeline joining from position Latitude 01° 12.829' N Longitude 103° 46.749' E to Latitude 01° 11.483' N Longitude 103° 47.430' E was removed.
4. Charts will be updated in due course.

Charts affected : GSP1, SP1, 501, 4035, 4036, 4039, 4040 and 4041.

Source : HD/DB67/14/2013.

III NAVIGATIONAL INFORMATION

*(NM 5/2014) SINGAPORE PORT MARINE NOTICES

The following Port Marine Notices have been shortlisted, as they would be of particular interest to mariners.

These notices can be accessed directly from MPA website:
www.mpa.gov.sg/sites/port_and_shipping/circulars_and_notices/port_marine_notices.page

PMN No.	Subject
20/2013	Mooring and unmooring of vessels at mooring buoys off Pulau Tekong reclamation area.
87/2013	Reclamation at Pasir Panjang Terminal and Pasir Panjang Wharves.
90/2013	Reclamation at Pulau Tekong.
93/2013	Dumping of excavated materials off Tuas View Extension.
94/2013	Mooring and unmooring of vessels at mooring buoys off Pulau Tekong reclamation area.
100/2013	Construction of Solid Handling Pier and protection bund (Phase 2) at Ayer Chawan Basin, Jurong Island.
116/2013	Construction of jetty at "LUBPARK" Shared Facility, off Tuas View Extension, West Johor Strait.
117/2013	Soil investigation works off Tuas View.
118/2013	Construction of Floating Sea Barrier at Sentosa Cove.
119/2013	Reclamation work at Tuas View Extension.
120/2013	Dredging works off Sembawang Wharves.
126/2013	Soil investigation works off Pulau Sebarok.
128/2013	Dredging work at Keppel Shipyard Benoi Road, off West Jurong Channel.
134/2013	Repair work at Bedok Jetty, East Coast Park.
135/2013	Repair work at Labrador Park Jetty.
136/2013	Construction of additional jetty at Pulau Seraya Power Station, Jurong Island.
137/2013	Repair work at Tankstore jetty No. 6, Pulau Busing.
138/2013	Repair and restoration work to existing rock bund at Sentosa Cove.
143/2013	Construction of Changi East Finger Extension.
144/2013	Submarine cable repair off Jurong Island, Selat Sinki.
145/2013	Construction of an Offshore containment bund off Tuas View.
150/2013	Construction of Jetty 2 at Jurong Island

III NAVIGATIONAL INFORMATION

156/2013	Core penetration test for coastal development off Tuas View.
159/2013	Mooring and unmooring of vessels at mooring buoys at Tuas View, off Temasek Fairway.
160/2013	Repair work to existing seawall at SAF Ferry Terminal off Kuala Johor.
161/2013	Dredging work at Serangoon Harbour.
163/2013	Reclamation of Ayer Chawan Basin, Jurong Island.
164/2013	Mooring and unmooring of vessels at mooring buoys at Banyan Basin, Jurong Island.
165/2013	Dredging works at Benoi Basin.
167/2013	Dredging works off Pasir Panjang Terminal.

***(NM 6/2014) SINGAPOREAN PRINT-ON-DEMAND (POD) CHARTS**

Print-On-Demand (POD) Charts are the most up-to-date paper nautical charts printed for navigational use. These nautical charts are produced in accordance with the International Hydrographic Organisation (IHO) chart specifications. These official nautical charts are continually updated to the latest Notices to Mariners before they are printed and sold to users.

These POD Charts include 200, 201, 202, 500, 501, 502 and 503.

BENEFITS TO OUR CUSTOMERS

Convenience

Customers need not make numerous hand corrections to the nautical charts before use. In addition the updated POD Charts are more accurate and reliable than offset printed charts with hand corrections.

Clarity

Clarity in the presentation of updated information as compared to lithographic printed charts, where in some cases there are several overlapping corrections over existing information.

Coverage

The POD Charts cover the Malacca and Singapore Straits, from One Fathom Bank to Horsburgh Lighthouse.

III
AMENDMENTS TO PUBLICATIONS

NIL

IV
REPRINT OF RADIO NAVIGATIONAL WARNINGS

The following Radio Navigational Warnings have been shortlisted, as they would be of particular interest to mariners.

TT026 (AMENDED 0N 07 OCT 13)
TUAS RECLAMATION WORKING AREA AT WESTERN PART OF SINGAPORE PORT ARE MARKED BY BUOYS (REF. PMN: 54/2013, 119/2013).

TT076 (AMENDED 060650Z)
RACON DELTA BUOY Q(6)LF15S IN 01°03.781'N 103°38.770'E HAS BEEN REMOVED FOR MAINTENANCE.

TT112
GERITA BEACON FI(2)10S IN POSITION LAT 01°13.417'N LONG 103°43.483'E IS REPORTED DAMAGED. VESSELS TO NAVIGATE WITH CAUTION.

TT117
BUFFALO ROCK BUOY FL(2)5S IN THE DEEP WATER ROUTE OF SINGAPORE STRAIT IN POSITION 01°09.85'N 103°48.10'E IS UNLIT.

TT131
SINGAPORE GOVERNMENT VESSEL REPORTED THAT ISOLATED DANGER BUOY AT POSITION 01°27.78'N, 104°27.19'E WAS FOUND UNLIT. MARINERS ARE ADVISED TO KEEP CLEAR OF THE AREA AND TO NAVIGATE WITH CAUTION.

TT135
RACON TK Q(6) + LFI 15 SECS IN POSITION 01°05.960'N 103°43.210'E IS REPORTED UNLIT.

TT143
BATU BERHANTI ISOLATED DANGER BUOY FL(2)5S IN POSITION 01°11.76'N 103°52.51'E IS DAMAGED AND UNLIT.

TT173
VESSELS IN EAST JOHOR STRAIT ARE ADVISED TO NAVIGATE WITH CAUTION WHEN NEAR THE PROJECT AREAS OFF PULAU TEKONG, CHANGI AND MALANG PAPAN AS SHALLOW WATER AREAS EXIST. VESSELS ARE ADVISED TO KEEP LOOKOUT FOR TUGS AND BARGES NAVIGATING NEAR THE PROJECT AREAS AND PASSENGER FERRIES CROSSING BETWEEN CHANGI AND PULAU TEKONG AND VICINITY OF PASIR GUDANG.

TT961
VESSELS INTENDING TO CROSS THE TRAFFIC SEPARATION SCHEME(TSS) OR PRECAUTIONARY AREAS IN THE SINGAPORE STRAIT DURING THE HOURS OF DARKNESS ARE RECOMMENDED TO DISPLAY THE NIGHT SIGNALS CONSISTING OF 3 ALL-ROUND GREEN LIGHTS IN A VERTICAL LINE WITH EFFECT FROM 1ST JULY 2011 AT 010000UTC (0800SGT) AS DETAILED IN MARITIME AND PORT AUTHORITY OF SINGAPORE'S PORT MARINE CIRCULAR, 02 OF 2011 DATED 30 MAY 2011.

ISSUED BY SINGAPORE PORT OPERATIONS CONTROL CENTRE (as at 22nd December 2013)

V
**EXTRACT OF ADMIRALTY NOTICES TO MARINERS
FOR DUAL BADGED CHARTS**

These notices can also be accessed directly from UKHO Website:
www.ukho.gov.uk/ProductsandServices/MaritimeSafety/Pages/NMPublic.aspx

NIL

Updated to Admiralty Notices to Mariners Edition No. 52 of 2013 dated 26th December 2013.

MPA ENC DISTRIBUTORS

ENC DISTRIBUTOR	ADDRESS	TELEPHONE/FAX NO./EMAIL/WEBSITE
<p>ChartWorld GmbH</p> <p>ChartWorld Asia Pacific Pte Ltd.</p>	<p>Atlantic Haus, Zirkusweg 1 D-20359 Hamburg Germany</p> <p>Frontech Centre 07-01, 15 Jalan Kilang Barat, Singapore 159357</p>	<p>Tel. No.: +49 40 853 58 6942 Fax No.: +49 40 853 58 6949 Email: sales@chartworld.com</p> <p>Tel No.: +65 6513 3500</p> <p>Website : http://www.chartworld.com http://www.ecdis-as-a-service.com</p>
DPM (Singapore) Pte Ltd	2 Boon Leat Terrace, #05-02/03 Harbourside 2, Singapore 119844	<p>Tel. No.: +65 6270 4060 Fax No.: +65 6276 3858 Email: sales@dpmsingapore.com.sg Website:http://www.dpmsingapore.com.sg</p>
<p>Maritime Information Systems (MARIS)</p> <p>Maritime Information Systems AS (MARIS)</p>	<p>52, Telok Blangah Road #01-06, Telok Blangah House, Singapore 058809</p> <p>Danholmen 25, 3128 Notteroy, Norway</p>	<p>Tel. No.: +65 6276 1472 Fax No.: +65 6276 1473 Email: : support@maris.sg Website: http://www.maris.no</p> <p>Tel. No.: +47 33 30 42 50 Fax No.: +47 33 30 42 51 Email: : sales@maris.no Website: http://www.maris.no</p>
Motion Smith	15 Jalan Kilang Barat #08-01/05 Frontech Centre, Singapore 159357	<p>Tel. No.: +65 6220 5098 Fax No.: +65 6225 4902 Email: sales@motsmith.com Website: http://www.motsmith.com</p>
Transas Marine Pacific Pte Ltd	Cyber Centre 16/18 Jalan Kilang Barat Off Jalan Bukit Merah Singapore 159358	<p>Tel. No.: +65 6271 0200 Fax No.: +65 6271 7300 Email: navigation.asia@transas.com Website: http://www.transas.com</p>
Japan Hydrographic Association (Electronic Charts Division)	Daiichi Sogo Bldg, 6F 1-6-6, Hanedakuko, Ota-ku Tokyo 144-0041, Japan	<p>Tel. No.: +81 3 5708 7093 Fax No.: +81 3 5708 7094 Email: shimizu-6ki@jha.jp Website: http://www.jha.or.jp/en/jha/</p>
Jeppesen Norway AS	P.O Box 212 , N-4371 Egersund, Norway	<p>Tel No.: +47 51 46 4700 Fax No: +47 51 46 4701 Email: license.marine@jeppesen.com Website : http://www.jeppesen.com/marine</p>
PRIMAR STAVANGER	Lervigsveien 36, P.O Box 60, N-4001 Stavanger, Norway	<p>Tel. No.: +47 51 93 9500 Fax No.: +47 51 93 9501 Email: sales@ecc.no Website : http://www.primar.no</p>
The United Kingdom Hydrographic Office	Admiralty Way, Taunton, Somerset, TA1 2DN United Kingdom	<p>Tel. No.: +44 1823 33 7900 Fax No.: +44 1823 28 4077 Emails: ENC.SalesReports@ukho.gov.uk Website: http://www.ukho.gov.uk</p>

Chart Agents for the Maritime and Port Authority of Singapore
Nautical Charts and Publications

Please approach any of the appointed chart agents to purchase the Singapore Nautical Charts and Publications.

CHART AGENT	ADDRESS	TELEPHONE/FAX NO./EMAIL/WEBSITE
Cornes (Singapore) Pte Ltd	10 Anson Road #23-06/6A International Plaza Singapore 079903	Tel. No.: +65 6223 8320 Fax No.: +65 6223 8321 Email: sales9850@cspl.sg Website: http://www.cornes-charts.com
DPM (Singapore) Pte Ltd	2 Boon Leat Terrace, #05-02/03 Harbourside 2, Singapore 119844	Tel. No.: +65 6270 4060 Fax No.: +65 6276 3858 Email: sales@dpmsingapore.com.sg Website: http://www.dpmsingapore.com.sg
E.W. Liner Charts & Publications Pte Ltd	102F, Pasir Panjang Road, #08-01, Citilink Warehouse Complex, Singapore 118530	Tel. No.: +65 6323 0773 Fax No.: +65 6323 0775 Email: ewliner@singnet.com.sg Website: http://www.ewliner.com
Kelvin Hughes (Singapore) Pte Ltd	896 Dunearn Road #03-05 Sime Darby Centre Singapore 589472	Tel. No.: +65 6545 9880 Fax No.: +65 6545 8892 Email: leslie.khoo@kelvinhughes.com.sg Website: http://www.kelvinhughes.com
Motion Smith	15 Jalan Kilang Barat #08-01/05 Frontech Centre Singapore 159357	Tel. No.: +65 6220 5098 (After office hours:+65 8163 9993) Fax No.: +65 6225 4902 Email: sales@motsmith.com Website: http://www.motsmith.com

HYDROGRAPHIC NOTE - Instructions

1. Mariners are requested to notify the Chief Hydrographer, Maritime and Port Authority of Singapore, when new or suspected dangers to navigation are discovered, changes are observed in aids to navigation or where corrections to nautical publications may be necessary. Reports, which cannot be confirmed or are lacking in certain details should not be withheld.
2. Any ambiguities of time, positioning and depth should be stressed and any firm expectation of being able to check the information provided on a following voyage should be mentioned.
3. Mariners using satellite position fixing systems, eg. GPS, should provide details of equipment and datum used (where applicable). Where bearings (true or magnetic) are taken visually or by radar to fix a position, it should include more than two objects in order to provide a check on its accuracy. A position may also be defined by bearing and distance from a conspicuous object eg. beacon, lighthouse etc.
4. The note should include a tracing or a digital image of the chart used and the details should be clearly marked.
5. Echo sounders frequently register greater depths than the advertised maximum depth for the equipment, eg. a trace appearing at 50 metres may be in fact be 550 metres or even 1050 metres for equipment whose maximum depth is 500 metres. Erroneous depths caused by 2nd transmission error can usually be recognised by the following:
 - (a) the tracing being weaker than normal for the depth registered,
 - (b) the trace appearing to pass through the transmission line,
 - (c) the feathery nature of the trace.
6. Upon receipt of a hydrographic note, a Notice to Mariners may be issued. The sender's vessel or name is quoted as the source unless the same information is also received in foreign Notices to Mariners.
7. Reports of shoals, uncharted dangers and defects in aids to navigation may also be made to the appropriate Singapore Port Operations Control Centre on VHF Channels 10, 12, 14, 68 or 73.

HYDROGRAPHIC NOTE

To:

Chief Hydrographer
Maritime and Port Authority of Singapore
460 Alexandra Road PSA Building #20-00
Singapore 119963

Tel : (65) 6375 1227
Fax : (65) 6278 7646
Email : hydrographic@mpa.gov.sg

Sender's Contact Details :

Date :

Name of Vessel :

Address of Sender :

Tel : Fax :

Email :

Nature of Observation :

General Location :

Subject :

Position : Lat. Long.

Charts Used :

Date & Time of Observation :

Details :

.....

.....

Attachment :

Equipment Used :

Type of Position Fixing : GPS / DGPS Others :

Type of Echo Sounder :

Name and Signature :

Ship's/Company's Stamp :