



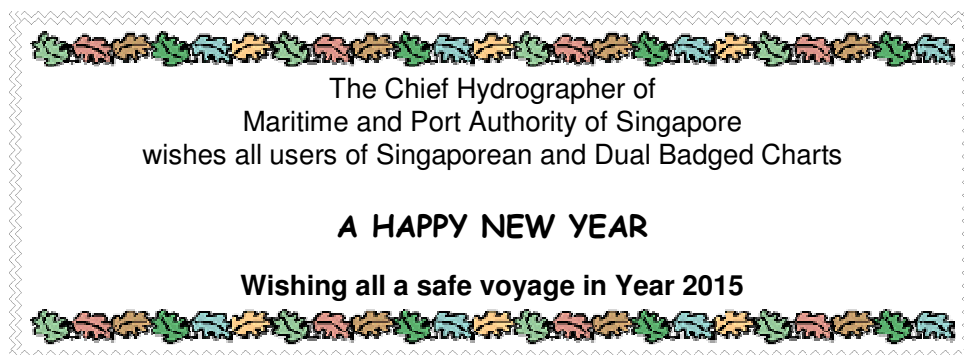
## SINGAPOREAN NOTICES TO MARINERS

SECTION	CONTENT	Page
I	Index of Charts & Publications	1
II	New Publications	9
	Notices to Mariners and Chart Corrections	13
	Temporary and Preliminary Notices	15
III	Navigational Information	16
	Amendments to Publications	18
IV	Reprint of Radio Navigational Warnings	21
V	Extract of Admiralty Notices to Mariners for Dual Badged Charts	22

The monthly Notices to Mariners contain corrective information affecting charts published by the Hydrographic Department, Maritime and Port Authority of Singapore. The information contained in these Notices should be updated on the charts affected. Notices under Section II apply only to the particular Singaporean Chart(s) indicated.

Mariners are requested to notify the Chief Hydrographer, Maritime and Port Authority of Singapore, immediately on the discovery of new dangers or suspected dangers to navigation and of changes or defects in aids to navigation. See Hydrographic Note on back page.

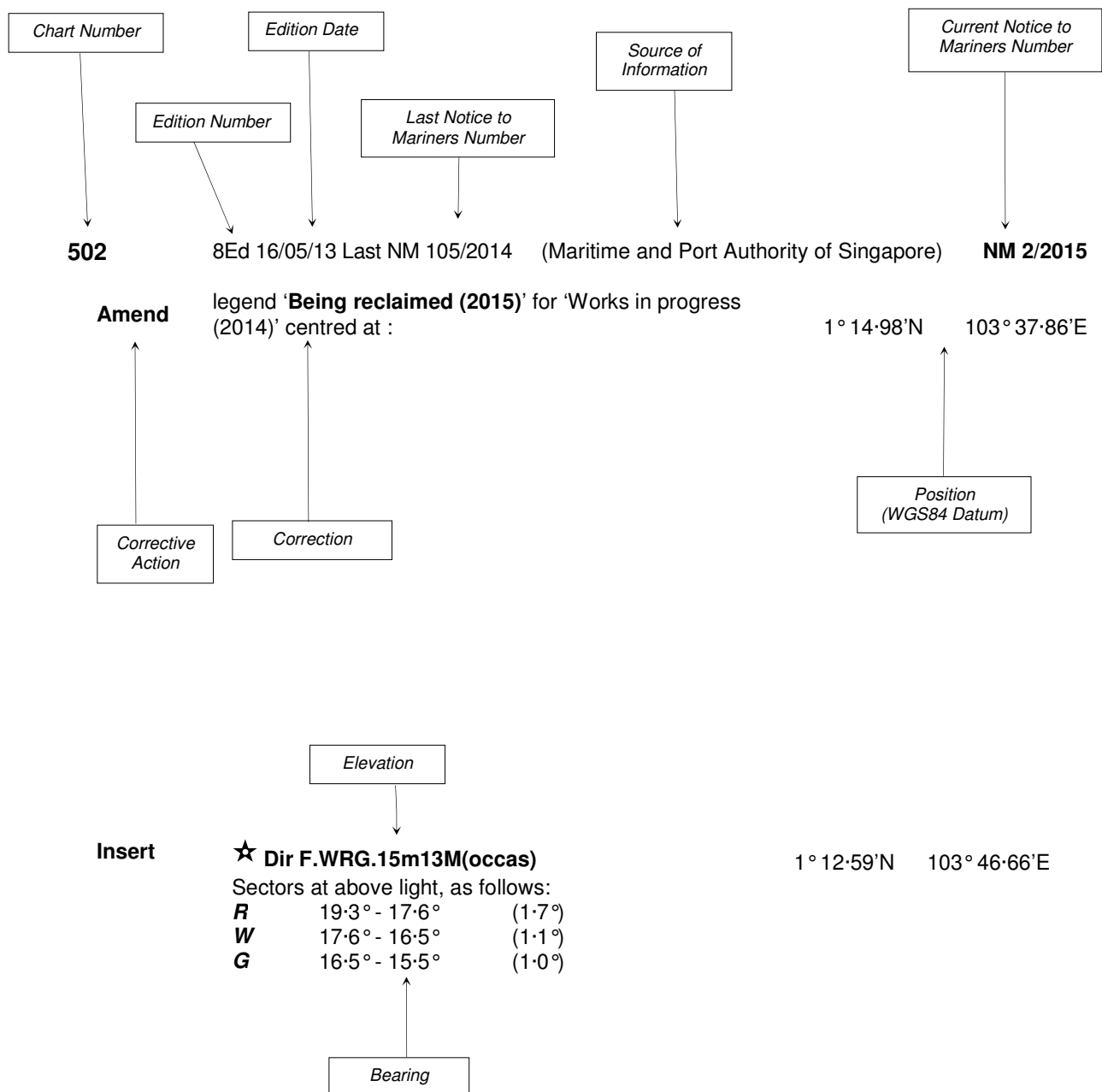
The monthly Singaporean Notices to Mariners can be accessed directly from the MPA website:  
[http://www.mpa.gov.sg/sites/port\\_and\\_shipping/circulars\\_and\\_notices/singapore\\_notices\\_to\\_mariners\(ntm\).page](http://www.mpa.gov.sg/sites/port_and_shipping/circulars_and_notices/singapore_notices_to_mariners(ntm).page)



Hydrographic Department  
 Maritime and Port Authority of Singapore  
 7B Keppel Road  
 #20-00 Tanjong Pagar Complex  
 Singapore 089055  
 Tel: (65) 6375 1227  
 Fax: (65) 6278 7646  
 Email: [hydrographic@mpa.gov.sg](mailto:hydrographic@mpa.gov.sg)

## EXPLANATION OF FORMAT

The elements of a typical chart correction are explained below.



### Notes:

- Notice to Mariners number followed by:  
**T** indicates a Temporary Notice (eg. **NM 3T/2015**).  
**P** indicates a Preliminary Notice (eg. **NM 4P/2015**).
- Bearings are true reckoned clockwise from 000° to 359°; those relating to lights are from seaward.
- Heights and elevations are above Mean High Water Springs.

**I**  
**INDEX OF CHARTS AND PUBLICATIONS**

**INDEX OF AFFECTED CHARTS**

DESCRIPTION	NOTICE NO.	PAGE NO.
Index of Singaporean Charts	-	3, 4
Index of Dual-Badged Charts	-	5 to 7
Index of Singapore Electronic Navigational Chart (ENC)	-	8
Singapore Tide Tables Year 2015	-	9 to 11
New Edition Charts for Small Craft 2015	-	12
Singaporean Chart GSP1/SP1	*1, *2, *3, *4, *5, *6	13
Singaporean Chart 200	*7	13
Singaporean Chart 201	*7	14
Singaporean Chart 202	*1	14
Singaporean Chart 502	*1	14
Temporary and Preliminary Notices	*8P, *9	15
Singapore Port Marine Notices	*10	16
Singaporean Print-On-Demand (POD) Charts	*11	17
Amendments to Publications	*12	18 to 20
Reprint of Radio Navigational Warnings	-	21
Extract of Admiralty Notices to Mariners for Dual-Badged Charts	-	22
Singapore Electronic Navigational Chart (ENC) Distributors	-	23
Chart Distributors for the Maritime and Port Authority of Singapore Nautical Charts and Publications	-	24

\*Source: Maritime and Port Authority of Singapore

**I**  
**INDEX OF CHARTS AND PUBLICATIONS**

**INDEX OF NOTICES**

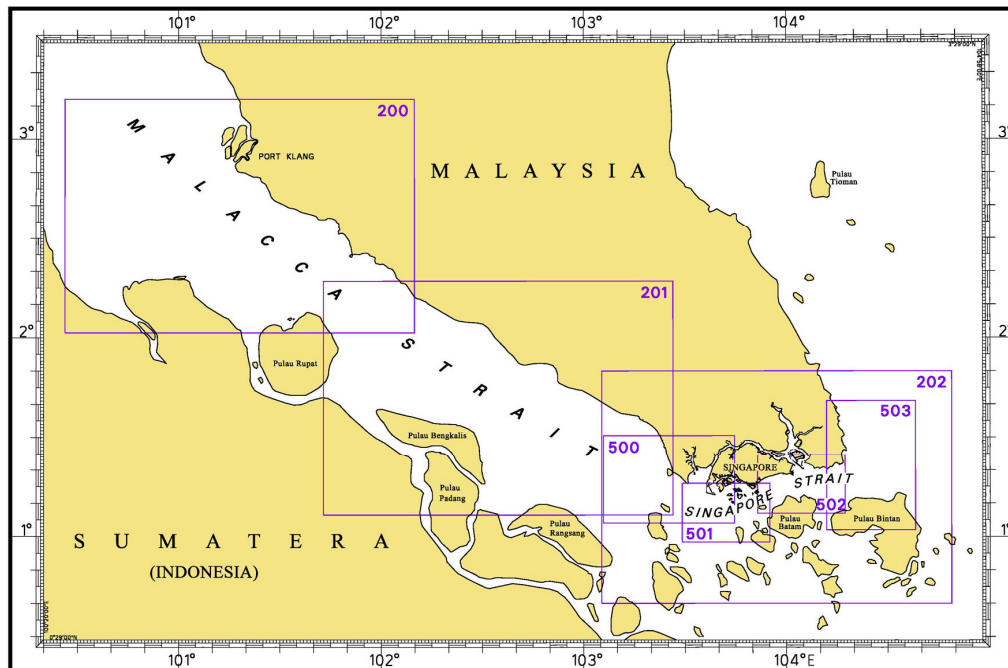
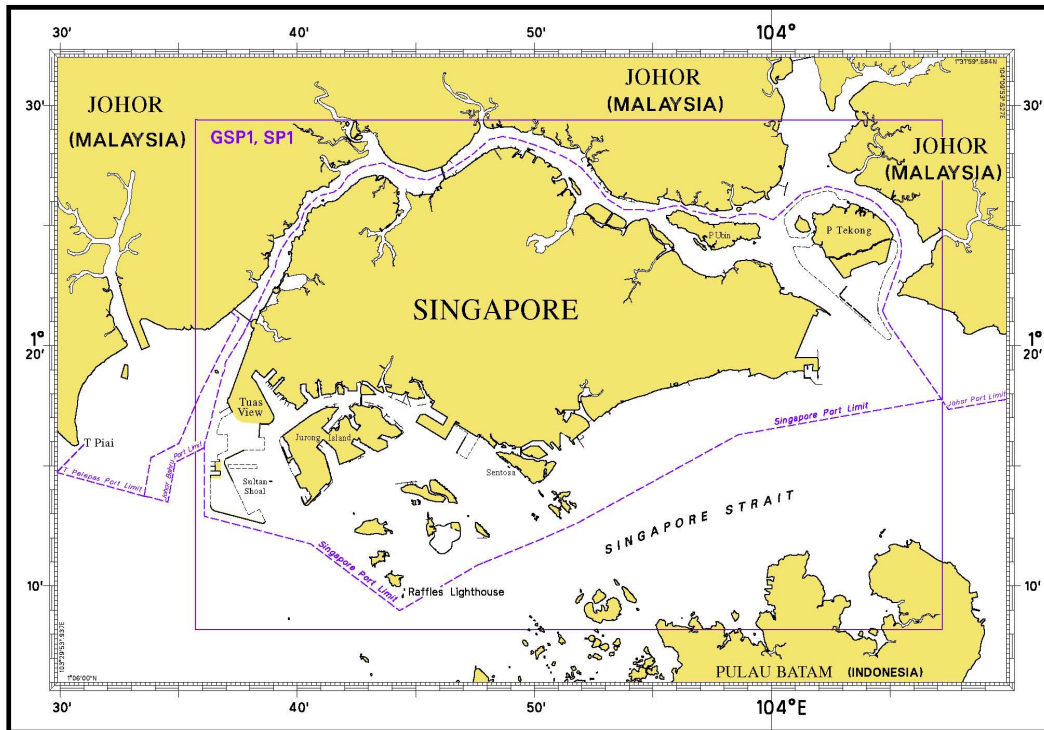
NOTICE NO.	DESCRIPTION	PAGE NO.
-	Index of Singaporean Charts	3, 4
-	Index of Dual-Badged Charts	5 to 7
-	Index of Singapore Electronic Navigational Chart (ENC)	8
-	Singapore Tide Tables Year 2015	9 to 11
-	New Edition Charts for Small Craft 2015	12
*1, *2, 3*, *4, *5, *6	Singaporean Chart GSP1/SP1	13
*7	Singaporean Chart 200	13
*7	Singaporean Chart 201	14
*1	Singaporean Chart 202	14
*1	Singaporean Chart 502	14
*8P, *9	Temporary and Preliminary Notices	15
*10	Singapore Port Marine Notices	16
*11	Singaporean Print-On-Demand (POD) Charts	17
*12	Amendments to Publications	18 to 20
-	Reprint of Radio Navigational Warnings	21
-	Extract of Admiralty Notices to Mariners for Dual-Badged Charts	22
-	Singapore Electronic Navigational Chart (ENC) Distributors	23
-	Chart Distributors for the Maritime and Port Authority of Singapore Nautical Charts and Publications	24

\* Source: Maritime and Port Authority of Singapore

# I

## INDEX OF CHARTS AND PUBLICATIONS

### INDEX OF SINGAPOREAN CHARTS



#### Notes:

Updated Singaporean Charts are available through our Print-On-Demand (POD) Chart Service. For more information, refer to Section III – Navigational Information. These charts can be purchased from our Chart Distributors.

**I**  
**INDEX OF CHARTS AND PUBLICATIONS**

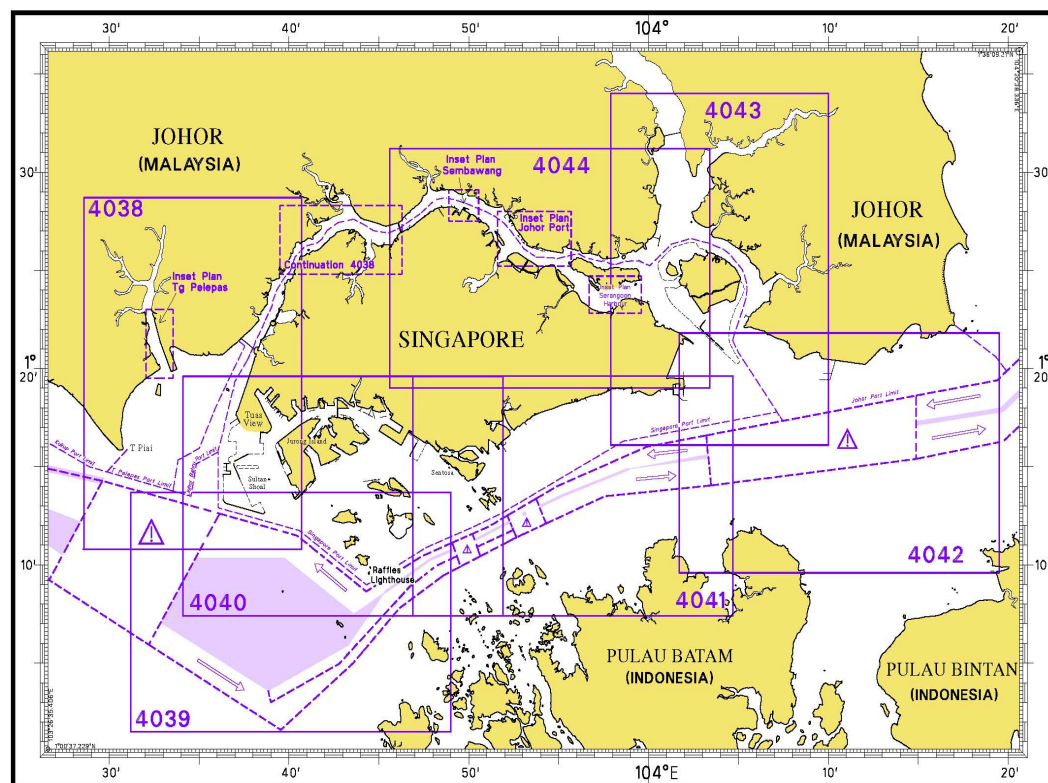
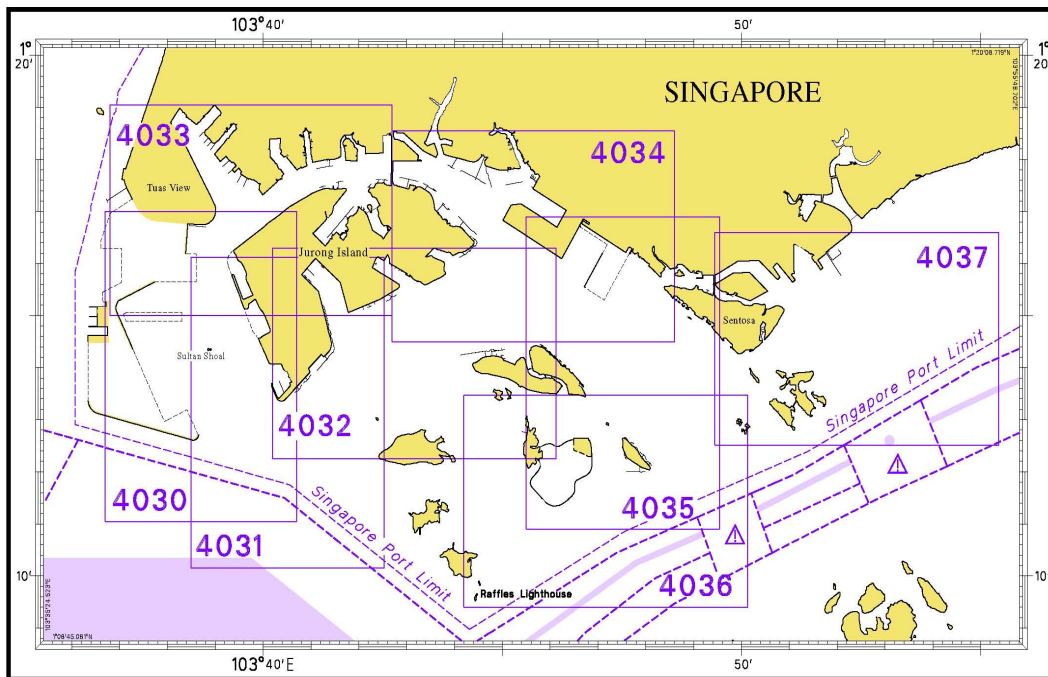
**SINGAPOREAN CHARTS**

<b>Chart No.</b>	<b>Chart Title</b>	<b>Scale 1:</b>	<b>Date Published of Latest Edition</b>
GSP1	Anchorage and Aids to Navigation (with Area Reference)	60 000	15/04/2014
SP1	Anchorage and Aids to Navigation	60 000	15/04/2014
200	Malacca Strait - Port Klang to Tanjung Keling	200 000	22/09/2011
201	Malacca Strait - Tanjung Keling to Western Entrance of Singapore Strait	200 000	15/08/2014
202	Singapore Strait	200 000	26/09/2013
500	Malacca and Singapore Straits – Pulau Pisang to Raffles Lighthouse	75 000	26/09/2013
501	Singapore Strait – Western Part	50 000	03/05/2012
502	Singapore Strait - Eastern Part	50 000	03/05/2012
503	South China Sea - Eastern Approaches and Entrance to Singapore Strait	75 000	15/08/2014
-	Charts for Small Craft – Singapore Strait & Adjacent Waterways	10 000 to 200 000	January 2015
1	<p>Symbols Abbreviations Terms and S-57 Objects used on Singapore Nautical and Electronic Navigational Charts.</p> <p>Available at MPA website  <a href="http://www.mpa.gov.sg/sites/global_navigation/publications/chart1.page">http://www.mpa.gov.sg/sites/global_navigation/publications/chart1.page</a></p>	-	28/07/2011

# I

## INDEX OF CHARTS AND PUBLICATIONS

### INDEX OF DUAL-BADGED CHARTS



**I**  
**INDEX OF CHARTS AND PUBLICATIONS**

**DUAL- BADGED CHARTS**

<b>Chart No.</b>	<b>Chart Title</b>	<b>Scale 1:</b>	<b>Date Published of Latest Edition</b>
4030	Port of Singapore West Jurong Anchorages and Temasek Fairway	10 000	15/05/2014
4031	Port of Singapore Western Approaches to Jurong Island	10 000	15/05/2014
4032	Port of Singapore Sinki Fairway	10 000	15/05/2014
4033	Port of Singapore Tuas Bay, West Jurong Channel and Pesek Basin	10 000	15/05/2014
4034	Port of Singapore East Jurong Channel, Pasir Panjang Terminal and West Keppel Fairway	10 000	28/08/2014
4035	Port of Singapore Western Anchorages, Jong Fairway and Cruise Bay	10 000	28/08/2014
4036	Port of Singapore Raffles Lighthouse to The Sisters	10 000	25/04/2013
4037	Port of Singapore Keppel Harbour, Tanjong Pagar Terminal and Approaches	10 000	25/04/2013
4038	Malaysia and Singapore Johor Strait – Western Part	30 000	26/09/2013
4039	Indonesia, Singapore and Malaysia Western Approaches to Main Strait	30 000	24/04/2014
4040	Singapore, Indonesia and Malaysia Tuas View to Pulau Sakijang Bendera (S. John's Island)	30 000	14/08/2014
4041	Singapore and Indonesia Pulau Sebarok to Changi	30 000	14/08/2014



# I

## INDEX OF CHARTS AND PUBLICATIONS

### DUAL- BADGED CHARTS

Chart No.	Chart Title	Scale 1:	Date Published of Latest Edition
4042	Indonesia, Malaysia and Singapore Changi to Pulau Mungging and Tanjung Buntan to Tanjung Tondang	30 000	24/04/2014
4043	Malaysia and Singapore Kuala Johor and Sungai Johor	30 000	14/08/2014
4044	Singapore and Malaysia Johor Strait - Eastern Part	30 000	14/08/2014

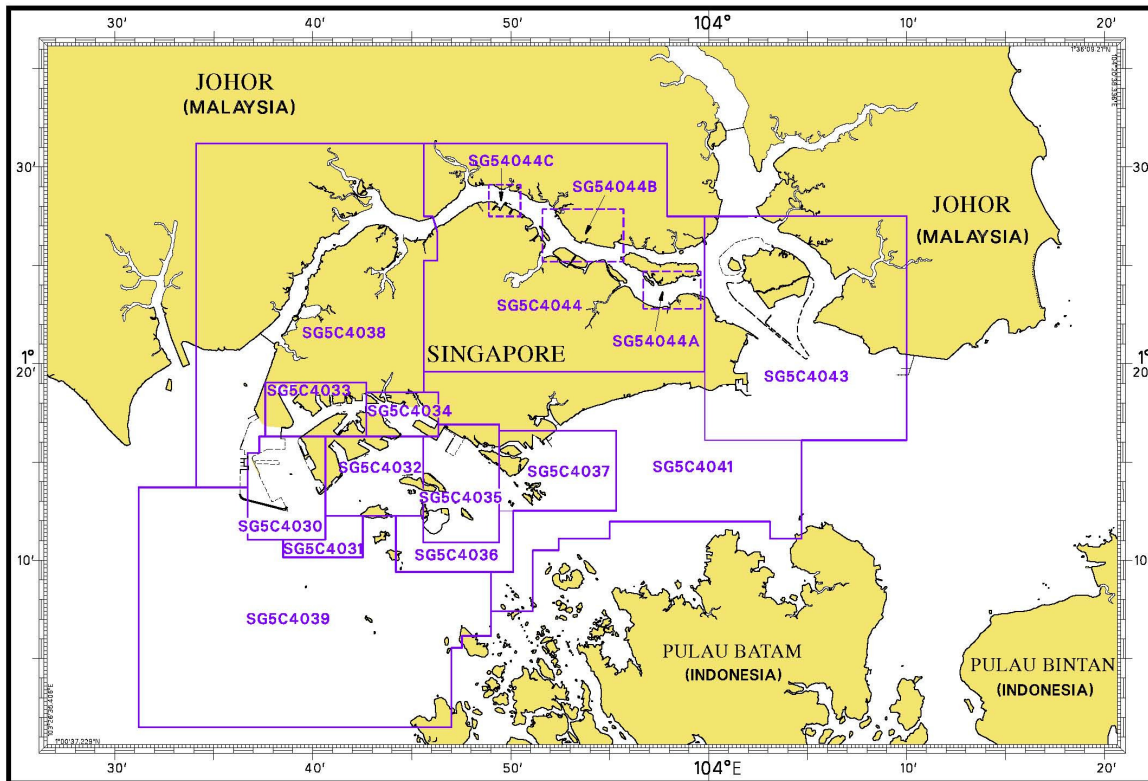
### SINGAPOREAN PUBLICATIONS

Item	Title
2	Singapore Tide Tables Year 2015
3	Singapore Port Information 2014/2015

# I

## INDEX OF CHARTS AND PUBLICATIONS

### INDEX OF SINGAPORE ELECTRONIC NAVIGATIONAL CHART (ENC)



### SINGAPORE ELECTRONIC NAVIGATIONAL CHART (ENC)

ENC Name	ENC Coverage	ENC Edition
SG5C4030	West Jurong Anchorages and Temasek Fairway	7 <sup>th</sup> Edition (1/09/2014)
SG5C4031	Western Approaches to Jurong Island	7 <sup>th</sup> Edition (1/09/2014)
SG5C4032	Sinki Fairway	9 <sup>th</sup> Edition (1/09/2014)
SG5C4033	Tuas Bay, West Jurong Channel and Pesek Basin	7 <sup>th</sup> Edition (1/09/2014)
SG5C4034	East Jurong Channel, Pasir Panjang Terminal and West Keppel Fairway	12 <sup>th</sup> Edition (1/09/2014)
SG5C4035	Western Anchorages, Jong Fairway and Cruise Bay	15 <sup>th</sup> Edition (1/09/2014)
SG5C4036	Raffles Lighthouse to The Sisters	8 <sup>th</sup> Edition (1/09/2014)
SG5C4037	Keppel Harbour, Tanjong Pagar Terminal and Approaches	8 <sup>th</sup> Edition (1/09/2014)
SG5C4038	Johor Strait – Western Part	7 <sup>th</sup> Edition (1/09/2014)
SG5C4039	Western Approaches to Main Strait	7 <sup>th</sup> Edition (1/09/2014)
SG5C4041	Pulau Sebarok to Changi	8 <sup>th</sup> Edition (1/09/2014)
SG5C4043	Kuala Johor	10 <sup>th</sup> Edition (1/09/2014)
SG5C4044	Johor Strait – Eastern Part	10 <sup>th</sup> Edition (1/09/2014)
SG54044A	Serangoon Harbour	1 <sup>st</sup> Edition (1/09/2014)
SG54044B	Pelabuhan Johor (Johor Port)	1 <sup>st</sup> Edition (1/09/2014)
SG54044C	Sembawang	1 <sup>st</sup> Edition (1/09/2014)

## II NEW PUBLICATION

### SINGAPORE TIDE TABLES YEAR 2015 PUBLISHED ON 21<sup>ST</sup> OCTOBER 2014

#### Summary of Publication

This publication contains Tidal Height and Tidal Stream Predictions covering stations in Singapore Port Waters and along the Straits of Malacca and Singapore.

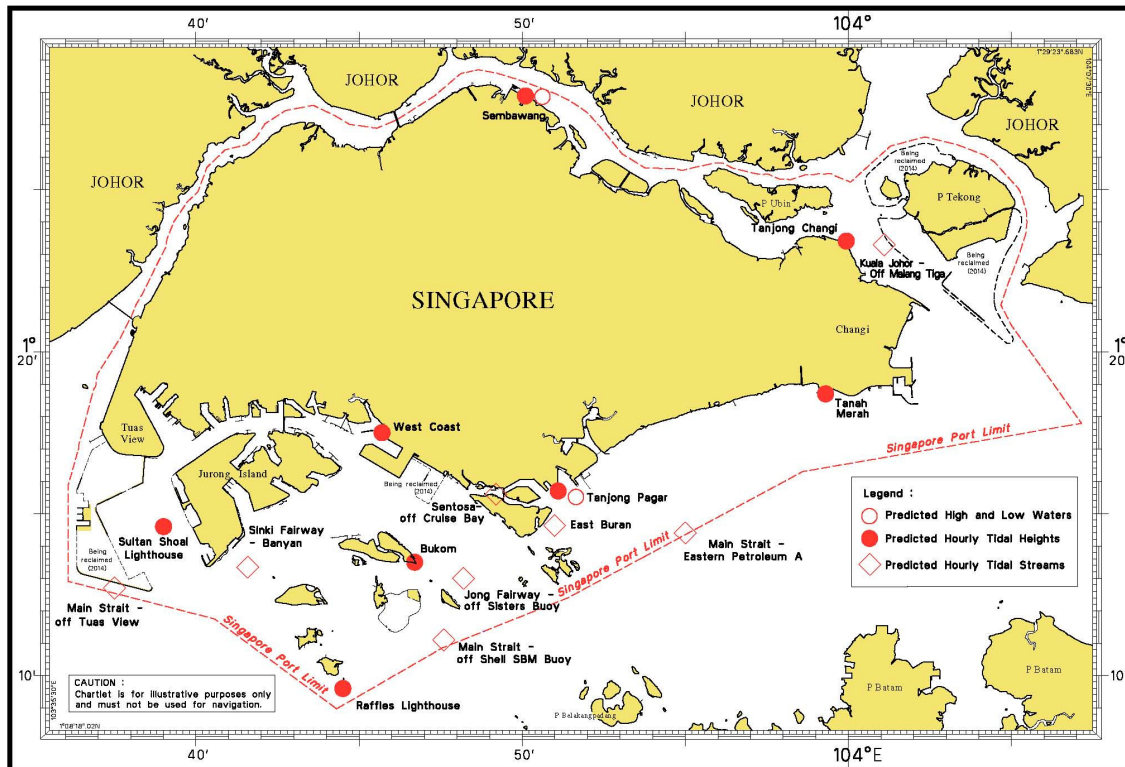
This publication consists of 5 segments.

1. **High and Low Water Predictions** at the following stations:
  - a) Tanjong Pagar
  - b) Sembawang
  
2. **Hourly Tidal Height Predictions** at the following stations:
  - a) Sultan Shoal Lighthouse
  - b) Raffles Lighthouse
  - c) West Coast
  - d) Bukom
  - e) Tanjong Pagar
  - f) Tanah Merah
  - g) Tanjong Changi
  - h) Sembawang
  - i) Singapore Strait – Horsburgh Lighthouse
  
3. **Hourly Tidal Stream Predictions** at the following stations:
  - a) Main Strait – off Tuas View
  - b) Sinki Fairway – Banyan
  - c) Jong Fairway – off Sisters Buoy
  - d) Main Strait – off Shell SBM Buoy
  - e) Sentosa – off Cruise Bay
  - f) East Buran
  - g) Main Strait – Eastern Petroleum A
  - h) Kuala Johor – off Malang Tiga
  
4. **Maximum and Slack Tidal Stream Predictions** at the following stations:
  - a) Malacca Strait – off The Brothers Light
  - b) Singapore Strait – Selat Phillip
  - c) Singapore Strait – Karang Banteng (Buffalo Rock)
  - d) Singapore Strait – Horsburgh Lighthouse
  
5. **Malacca Strait – High and Low Water Predictions** at the following stations:
  - a) Kedah Pier, Pulau Pinang
  - b) Port Dickson
  - c) Kuala Batu Pahat

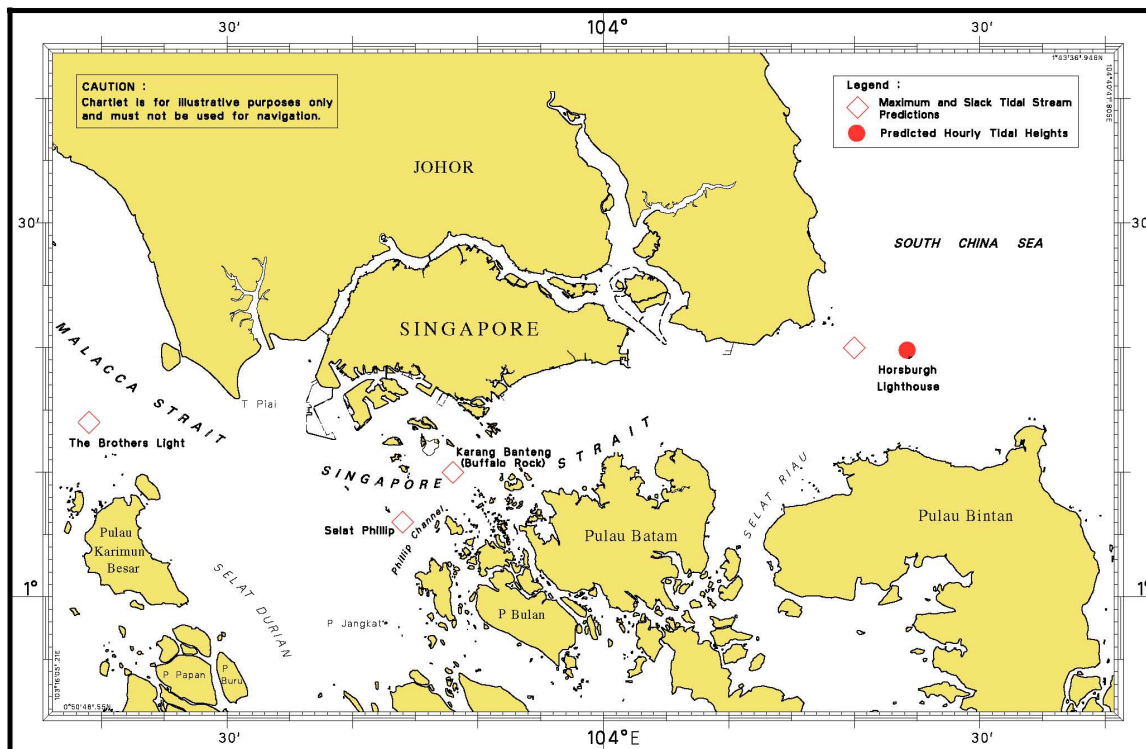
The locations of the above stations are shown in the chartlets below:

## II NEW PUBLICATION

### Tidal Prediction Stations within Singapore Port Waters

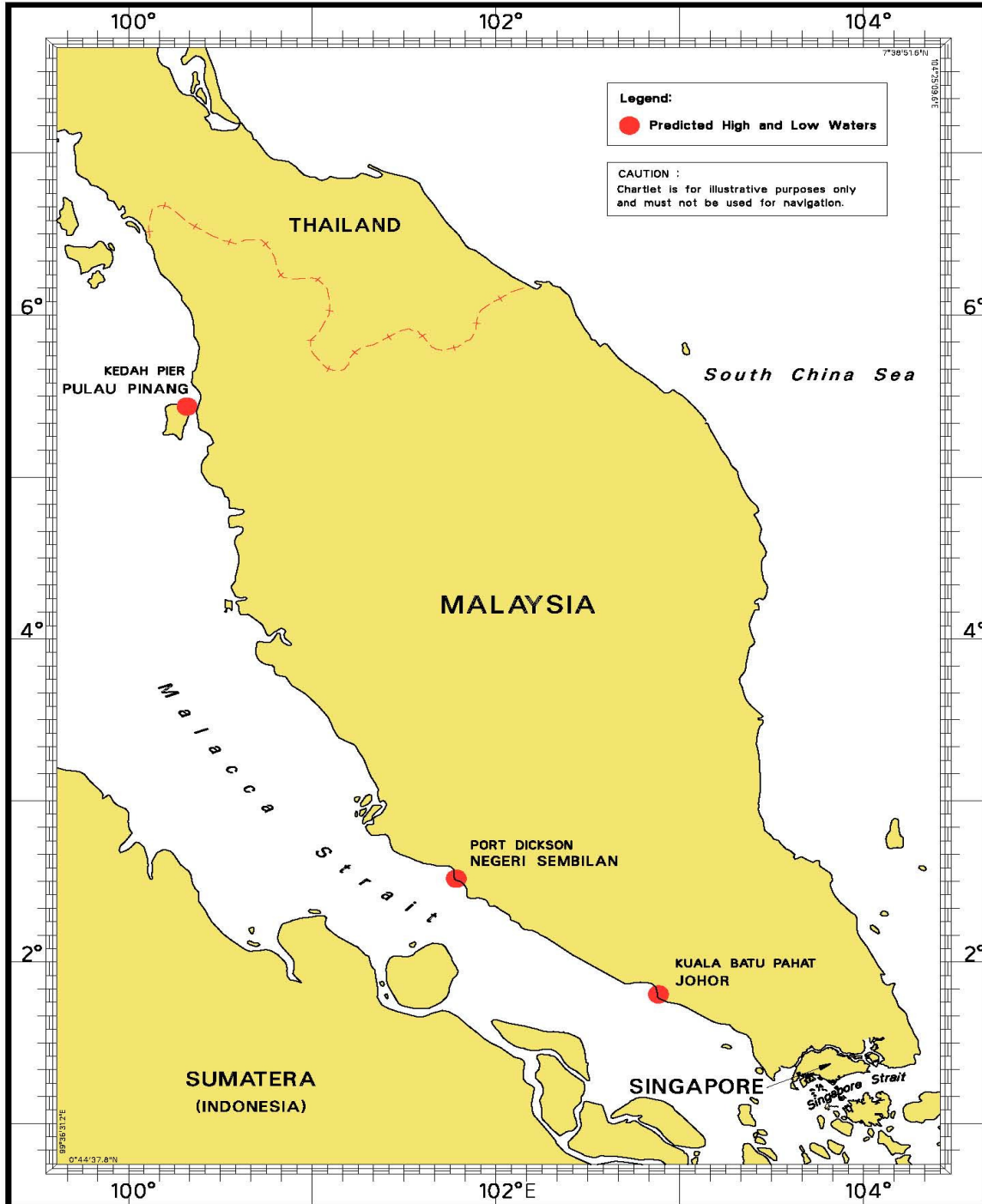


### Tidal Prediction Stations in Straits of Malacca and Singapore



## II NEW PUBLICATION

### Tidal Prediction Stations in Malacca Strait



This publication is available from the following Chart Distributors:

1. Cornes Singapore Pte Ltd
2. DPM (Singapore) Pte Ltd
3. E.W. Limer Charts & Publications Pte Ltd
4. Kelvin Hughes (Singapore) Pte Ltd
5. Motion Smith

(Please refer Page 24 for details)







## II NEW PUBLICATIONS

### NEW EDITION CHART TO BE PUBLISHED ON JANUARY 2015

<b>Chart Number</b>	:	CHARTS FOR SMALL CRAFT
<b>Title</b>	:	Singapore Strait and Adjacent Waterways – 2015 Edition
<b>Date Published</b>	:	January 2015
<b>Size of chart</b>	:	600 x 400 mm
<b>Remarks</b>	:	<p>The publication contains 12 Small Craft Charts and related nautical information bounded into an atlas. The symbols, abbreviations and term depicted on these charts are consistent with the International Hydrographic Organization Chart Standards and Specifications. (Refer MPA website <a href="http://www.mpa.gov.sg/sites/global_navigation/publications/chart1.page">http://www.mpa.gov.sg/sites/global_navigation/publications/chart1.page</a>)</p> <p>Symbols for the locations of pleasure craft facilities and areas for sea sport activities such as board sailing, dinghy sailing, keelboat sailing, power-boating and water-skiing are also included and highlighted in red.</p> <p>Chart of the same publication Edition 2014 published on 2<sup>nd</sup> January 2014 will be superseded.</p>

---

## II NOTICES TO MARINERS AND CHART CORRECTIONS

<b>GSP1/SP1</b>		9Ed 15/04/14 Last NM 102/2014	(Maritime and Port Authority of Singapore)	<b>NM 1/2015</b>
<b>Insert</b>		<b>Eastern Boarding Ground C</b>	1°15'89"N	103°57'83"E
<b>Move</b>		<b>Eastern Boarding Ground B</b> from :	1°15'65"N	103°57'40"E
		to :	1°15'41"N	103°56'96"E
		(Maritime and Port Authority of Singapore)		<b>NM 2/2015</b>
<b>Insert</b>		dashed line joining	1°14'06"N	103°40'14"E
			1°14'06"N	103°39'90"E
			1°14'89"N	103°39'51"E
			1°15'14"N	103°39'68"E
		legend ' <b>Works in progress (2014)</b> ' centred at:	1°14'56"N	103°39'79"E
<b>Insert</b>		dashed line joining	1°15'76"N	103°39'35"E
			1°15'80"N	103°39'31"E
			1°16'01"N	103°39'22"E
			1°16'14"N	103°39'22"E
			1°16'43"N	103°39'44"E
			1°16'50"N	103°39'56"E
			1°16'42"N	103°39'62"E
		legend ' <b>Works in progress (2014)</b> ' centred at:	1°16'05"N	103°39'36"E
		(Maritime and Port Authority of Singapore)		<b>NM 3/2015</b>
<b>Insert</b>		dashed line joining	1°17'38"N	103°42'19"E
			1°17'27"N	103°41'99"E
			1°17'19"N	103°42'03"E
			1°17'12"N	103°42'07"E
			1°16'98"N	103°42'16"E
		legend ' <b>Works in progress (2014)</b> ' centred at:	1°17'18"N	103°42'24"E
		(Maritime and Port Authority of Singapore)		<b>NM 4/2015</b>
<b>Delete</b>		Banyan (Ru)	1°13'35"N	103°41'59"E
		(Maritime and Port Authority of Singapore)		<b>NM 5/2015</b>
<b>Delete</b>		Fl.R.5s3m3M Chawan	1°17'16"N	103°42'12"E
		(Maritime and Port Authority of Singapore)		<b>NM 6/2015</b>
<b>Delete</b>		Fl.Y.4s TS-01	1°16'58"N	103°38'82"E
<hr/>				
<b>200</b>		3Ed 22/09/11 Last NM 61/2014	(Admiralty Notice No. 51/5606/2014)	<b>NM 7/2015</b>
<b>Insert</b>			2°15'00"N	101°59'42"E

## II NOTICES TO MARINERS AND CHART CORRECTIONS

<b>201</b>	5Ed 15/08/14	(Admiralty Notice No. 51/5606/2014)	<b>NM 7/2015</b>
<b>Insert</b>	①		2°15-00'N 101°59-42'E

---

<b>202</b>	7Ed 26/09/13 Last NM 91/2014	(Maritime and Port Authority of Singapore)	<b>NM 1/2015</b>
<b>Insert</b>	① <b><i>Eastern Boarding Ground C</i></b>		1°15-89'N 103°57-83'E
<b>Move</b>	① <b><i>Eastern Boarding Ground B</i></b> from :	1°15-65'N	103°57-40'E
	to :	1°15-41'N	103°56-96'E

---

<b>502</b>	6Ed 3/05/12 Last NM 78/2014	(Maritime and Port Authority of Singapore)	<b>NM 1/2015</b>
<b>Insert</b>	① <b><i>Eastern Boarding Ground C</i></b>		1°15-89'N 103°57-83'E
<b>Move</b>	① <b><i>Eastern Boarding Ground B</i></b> from :	1°15-65'N	103°57-40'E
	to :	1°15-41'N	103°56-96'E

---



## II TEMPORARY AND PRELIMINARY NOTICES

\*(NM 8P/2015)

### CITY TO CITY CABLE SYSTEM (C2C) – Replacement of Repeater

<b>Description</b>	: Mariners are advised that repeater replacement works to the C2C (Singapore to Hong Kong) will be carried out: In the approaches to the Traffic Separation Scheme, north-east of Horsburgh Lighthouse.  Navigate with caution and give a wide berth when approaching the cable repair vessel.				
<b>Vessel Involved</b>	: CS DURABLE (cable repair vessel, call sign "V7D18")				
<b>Date and Duration</b>	: 13 <sup>th</sup> to 31 <sup>st</sup> January 2015 (19 days)				
<b>Operating Hours</b>	: Daily, from 0000 hrs to 2400 hrs (including Sundays and Public Holidays).				
<b>Locations of repeater faults (Coordinates in WGS84)</b>	: <table style="width: 100%; border: none;"> <tr> <td style="text-align: center;"><b>Latitude (N)</b></td><td style="text-align: center;"><b>Longitude (E)</b></td></tr> <tr> <td style="text-align: center;">01° 28.288' N</td><td style="text-align: center;">104° 32.098' E</td></tr> </table>	<b>Latitude (N)</b>	<b>Longitude (E)</b>	01° 28.288' N	104° 32.098' E
<b>Latitude (N)</b>	<b>Longitude (E)</b>				
01° 28.288' N	104° 32.098' E				
<b>Charts Affected</b>	: <b>Singaporean</b> 202, 503				
<b>Source</b>	: Maritime and Port Authority of Singapore				

-----

\*(NM 9/2015)      **LIST OF VALID TEMPORARY AND PRELIMINARY NOTICES FOR YEAR 2014**

NM Nos.	Subject
92T/2014	Semaphore Tower at Pulau Satumu – Raffles Lighthouse.

-----

\*Source: Maritime and Port Authority of Singapore

### III NAVIGATIONAL INFORMATION

**\*(NM 10/2015) SINGAPORE PORT MARINE NOTICES AND PORT MARINE CIRCULARS**

The Port Marine Notices and Port Marine Circulars shortlisted below would be of particular interest to mariners. Details and complete list of the Notices and Circulars are available at these link:

[http://www.mpa.gov.sg/sites/port\\_and\\_shipping/circulars\\_and\\_notices/port\\_marine\\_notices.page](http://www.mpa.gov.sg/sites/port_and_shipping/circulars_and_notices/port_marine_notices.page)

[http://www.mpa.gov.sg/sites/port\\_and\\_shipping/circulars\\_and\\_notices/port\\_marine\\_circulars.page](http://www.mpa.gov.sg/sites/port_and_shipping/circulars_and_notices/port_marine_circulars.page)

<b>PMN No.</b>	<b>Subject</b>
143/2014	Reclamation work off Temasek Fairway, West of Jurong Island.
144/2014	Reclamation at Pasir Panjang Terminal Phases 3 and 4.
145/2014	Retrieval of sand deposits at Banyan Basin, Jurong Island.
146/2014	Construction of an Offshore Containment Bund and Soil Investigation north of West Jurong Anchorage, off Temasek Fairway.
147/2014	Mooring and Unmooring of vessels north of West Jurong Anchorage, off Temasek Fairway.
151/2014	Mooring and Unmooring of vessels off Jurong Island, off Temasek Fairway.
152/2014	Reclamation, Sand Re-handling and soil investigation work off ALGAS and West Jurong Anchorages.
157/2014	Reclamation work at Jurong Island, off Pesek Basin.
159/2014	Maintenance dredging at Sungei Changi.
<b>PMC No.</b>	<b>Subject</b>
15/2014	Revision of Singapore Eastern Pilot Boarding Grounds and measures to enhance safety of navigation for the Eastern Approaches of the Port of Singapore.

---

### III NAVIGATIONAL INFORMATION

#### \*(NM 11/2015) SINGAPOREAN PRINT-ON-DEMAND (POD) CHARTS

Print-On-Demand (POD) Charts are the most up-to-date paper nautical charts printed for navigational use. These nautical charts are produced in accordance with the International Hydrographic Organisation (IHO) chart specifications. These official nautical charts are continually updated to the latest Notices to Mariners before they are printed and sold to users.

These POD Charts include 200, 201, 202, 500, 501, 502 and 503.

#### BENEFITS TO OUR CUSTOMERS

##### **Convenience**

Customers need not make numerous hand corrections to the nautical charts before use. In addition the updated POD Charts are more accurate and reliable than offset printed charts with hand corrections.

##### **Clarity**

Clarity in the presentation of updated information as compared to lithographic printed charts, where in some cases there are several overlapping corrections over existing information.

##### **Coverage**

The POD Charts cover the Malacca and Singapore Straits, from One Fathom Bank to Horsburgh Lighthouse.

---

\*Source: Maritime and Port Authority of Singapore

### III AMENDMENTS TO PUBLICATIONS

#### \*(NM 12/2015) UPDATING OF PUBLICATION “SINGAPORE PORT INFORMATION 2014/2015”

##### 1. PILOTAGE

Page 72 – Item 17

##### PILOT BOARDING AND DISEMBARKATION GROUNDS

Amend paragraph (b)

Eastern Boarding Ground “B” (PEBGB) – in position:

Latitude 01° 15' 40.8"N, Longitude 103° 56' 9.56"E,

This boarding ground is to be used by all vessels arriving from the west proceeding to the anchorages in the eastern sector of the port, or as may be directed by the Port Master.

Insert paragraph (b)(i)

Eastern Boarding Ground “C” (PEBGC) – in position:

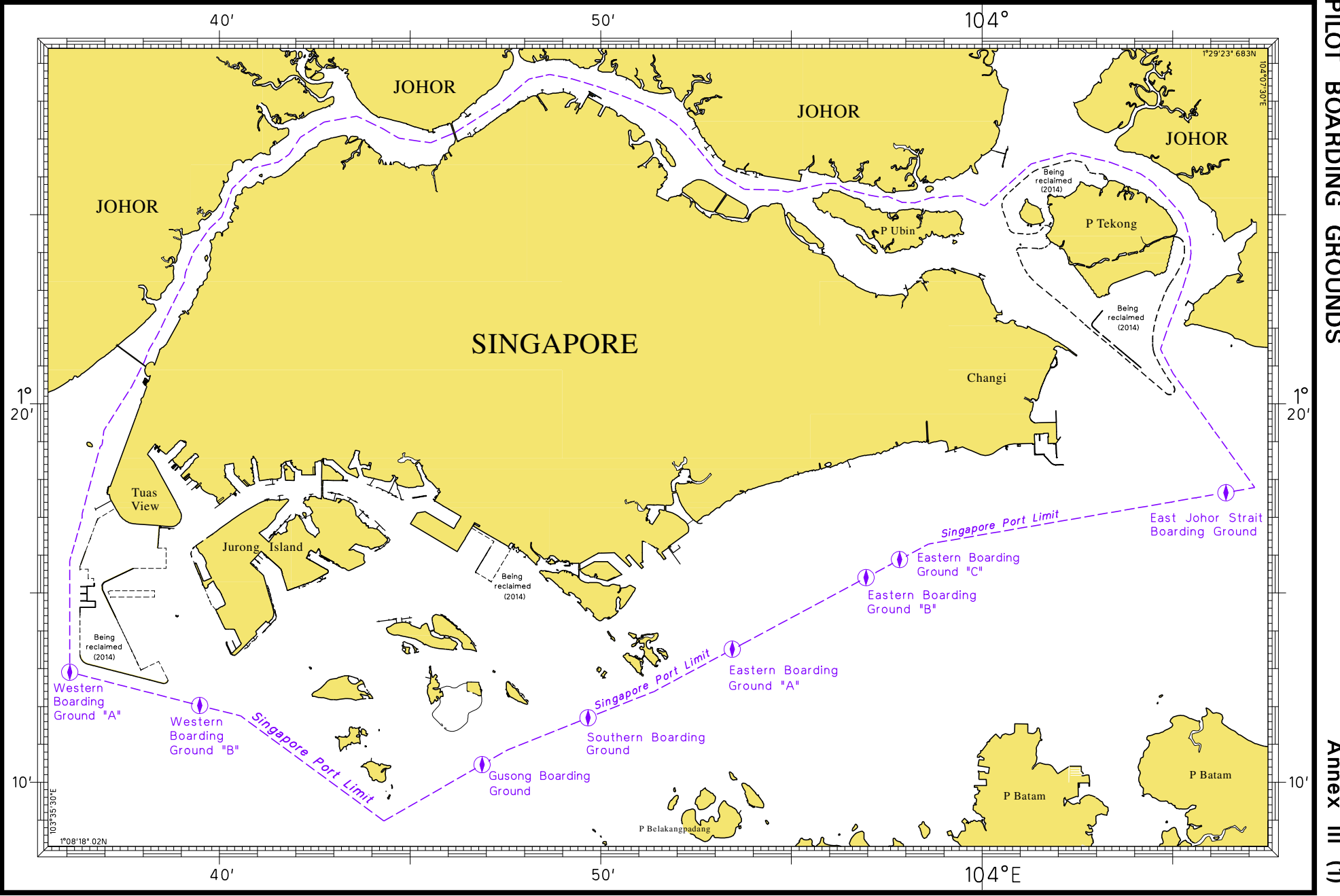
Latitude 01° 15' 8.85"N, Longitude 103° 57' 8.34"E,

This boarding ground is to be used by all vessels arriving from the east proceeding to the eastern or western sector of the port, or as may be directed by the Port Master.

Amend the chartlet below on page 77

\*Source: Maritime and Port Authority of Singapore

---



### III AMENDMENTS TO PUBLICATIONS

**\*(NM 12/2015) UPDATING OF PUBLICATION “SINGAPORE PORT INFORMATION 2014/2015”**

**1. DEPTHS OF NAVIGATIONAL CHANNELS AND FAIRWAYS**

Page 109

**Amend** the following:

LOCATIONS		DEPTHS(m)	REMARKS
East Jurong Channel	Deep water channel	16.5m	Note: 14.8m high spot off Pusing Buoy

**2. CHARACTERISTICS OF AIDS TO NAVIGATION**

Page 135

**WEST JURONG CHANNEL**

**Delete** the following:

Name of Beacon/Buoy	Position Lat. N Long. E Deg Min	Structure Colour & Shape	Light Characteristic	Owner
TS-01 Buoy	01° 16.580' 103° 38.820'	Yellow pillar	Fl.Y.4s	MPA

**3. Page 141**

**AYER CHAWAN BASIN**

**Delete** the following:

Name of Beacon/Buoy	Position Lat. N Long. E Deg Min	Structure Colour & Shape	Light Characteristic	Owner
Chawan Beacon	01° 17.160' 103° 42.120'	Red can on red concrete pile	Fl.R.5s3m3M	Exxon Mobil Asia Pacific Pte Ltd

**4. Page 146**

**PASIR PANJANG FERRY TERMINAL**

**Amend** the following:

Name of Beacon/Buoy	Position Lat. N Long. E Deg Min	Structure Colour & Shape	Light Characteristic	Owner
Dolphin Beacon	01° 16.121' 103° 47.736'	Yellow staff on dolphin	Fl.Y.2,5s	MPA

**5. Page 165 – Item 5**

**WHARVES AND BERTHS**

**PASIR PANJANG TERMINAL (PSA SINGAPORE TERMINALS) (1° 17.2'N, 103° 46.1'E)**

**Insert** the following:

Berth	Length of Berth	Depth Alongside (Year Surveyed)	Controlling Depth In Approaches
P34	312.5m	18.0m (2014)	-

### III AMENDMENTS TO PUBLICATIONS

#### UPDATING OF PUBLICATION “SINGAPORE PORT INFORMATION 2014/2015” (cont/)

6. **WHARVES AND BERTHS**  
Page 171 – Item 21

##### **PULAU DAMAR LAUT (JURONG PORT PTE LTD) (1° 18.1'N, 103° 42.9'E)**

**Amend** the following:

Berth	Length of Berth	Max LOA	Depth Alongside (Year Surveyed)	Controlling Depth In Approaches
J13	150m	130m	6.3m (2014)	13.8m

7. Page 177 – Item 38

##### **PULAU BUSING {TANKSTORE (OTS)} (1° 14.4'N, 103° 44.7'E)**

**Insert** the following:

Berth	Length of Berth	Depth Alongside (Year Surveyed)	Controlling Depth In Approaches
OTS6W	132m	7.0m (2014)	-
OTS6E	132m	10.7m (2014)	-

**Delete** the following:

Berth	Length of Berth	Max Disp. (tonnes)	Max LOA	Depth Alongside (Year Surveyed)	Controlling Depth In Approaches
OTS6	106m	6,960	102m	8.5m (2007)	6.1m (240m East of berth)

8. Page 181 – Item 41a

##### **TANJONG PENJURU (OIL STATES JETTY) (1° 18.1'N, 103° 43.8'E)**

**Insert** the following:

Berth	Length of Berth	Width	Depth Alongside (Year Surveyed)	Controlling Depth In Approaches
RJ20	47m	14m	2.7m (2014)	-

9. Page 182 – Item 45

##### **JURONG ISLAND (STOLTHAVEN TERMINAL JETTY) (1° 16.6'N, 103° 39.8'E)**

**Insert** the following:

Berth	Length of Berth	Width of Berth	Depth Alongside (Year Surveyed)	Controlling Depth In Approaches
OST2	203.5m	36m	12.2m (2014)	-

\*Source: Maritime and Port Authority of Singapore

#### IV REPRINT OF RADIO NAVIGATIONAL WARNINGS

The following Radio Navigational Warnings have been shortlisted, as they would be of particular interest to mariners.

TT175

VESSELS IN EAST JOHOR STRAIT ARE ADVISED TO NAVIGATE WITH CAUTION WHEN NEAR THE PROJECT AREAS OFF PULAU TEKONG, CHANGI AND MALANG PAPAN AS SHALLOW WATER AREAS EXIST. VESSELS ARE ADVISED TO KEEP LOOKOUT FOR TUGS AND BARGES NAVIGATING NEAR THE PROJECT AREAS AND PASSENGER FERRIES CROSSING BETWEEN CHANGI AND PULAU TEKONG AND VICINITY OF PASIR GUDANG.

TT181

SEMAPHORE TOWER AT RAFFLES LIGHTHOUSE AT POSITION LAT 01° 09.606'N LONG 103° 44.450'E, DAY SIGNAL IS NOT OPERATIONAL. MARINERS ADVISED TO NAVIGATE WITH CAUTION.

TT217

HELEN MAR REEF (RACON M) FL.6SEC IN POSITION 01° 07.66'N 103° 40.56'E HAS BEEN REPORTED UNLIT. VESSELS TO NAVIGATE WITH EXTRA CAUTION.

TT961

VESSELS INTENDING TO CROSS THE TRAFFIC SEPARATION SCHEME(TSS) OR PRECAUTIONARY AREAS IN THE SINGAPORE STRAIT DURING THE HOURS OF DARKNESS ARE RECOMMENDED TO DISPLAY THE NIGHT SIGNALS CONSISTING OF 3 ALL-ROUND GREEN LIGHTS IN A VERTICAL LINE WITH EFFECT FROM 1ST JULY 2011 AT 010000UTC (0800SGT) AS DETAILED IN MARITIME AND PORT AUTHORITY OF SINGAPORE'S PORT MARINE CIRCULAR, 02 OF 2011 DATED 30 MAY 2011.

---

ISSUED BY SINGAPORE PORT OPERATIONS CONTROL CENTRE (as at 28<sup>th</sup> December 2014)



## V

# EXTRACT OF ADMIRALTY NOTICES TO MARINERS FOR DUAL-BADGED CHARTS

These notices can also be accessed directly from UKHO Website:

<http://www.ukho.gov.uk/ProductsandServices/MartimeSafety/Pages/NMPublic.aspx>


## 5445 SINGAPORE – Tuas View S, Changi East W, Ordinance Reach SW – Buoyage.

Source: Maritime and Port Authority of Singapore

### Chart 4030 [previous update 3897/14] WGS84 DATUM

Delete	 <i>Fl.Y.6s HVB-03</i>	1° 16'·603N., 103° 38'·496E.
	 <i>Fl.Y.4s HVB-04</i>	1° 16'·313N., 103° 38'·474E.

### Chart 4033 [previous update 3897/14] WGS84 DATUM

Delete	 <i>Fl.Y.6s HVB-03</i>	1° 16'·603N., 103° 38'·496E.
	 <i>Fl.Y.4s HVB-04</i>	1° 16'·313N., 103° 38'·474E.


### Chart 4038 [previous update 3897/14] WGS84 DATUM

Delete	 <i>Fl.Y.6s HVB-03</i>	1° 16'·60N., 103° 38'·50E.
	 <i>Fl.Y.4s HVB-04</i>	1° 16'·31N., 103° 38'·47E.


### Chart 4040 [previous update 5000/14] WGS84 DATUM

Delete	 <i>Fl.Y.6s HVB-03</i>	1° 16'·60N., 103° 38'·50E.
	 <i>Fl.Y.4s HVB-04</i>	1° 16'·31N., 103° 38'·47E.

### Chart 4041 [previous update 5000/14] WGS84 DATUM

Insert	 <i>Fl.Y.4s NTU-TM1 with radar reflector</i>	1° 18'·68N., 103° 59'·18E.
--------	---	----------------------------

### Chart 4043 [previous update 4925/14] WGS84 DATUM

Insert	 <i>Fl.Y.4s NTU-TM1 with radar reflector</i>	1° 18'·68N., 103° 59'·18E.
--------	---	----------------------------

### Chart 4044 [previous update 4373/14] WGS84 DATUM

Delete		1° 27'·25N., 103° 46'·30E.
--------	---	----------------------------

---

Updated to Admiralty Notices to Mariners Edition No. 52 of 2014 dated 25<sup>th</sup> December 2014.

## SINGAPORE ENC DISTRIBUTORS

ENC DISTRIBUTOR	ADDRESS	TEL/FAX /EMAIL/WEBSITE
ChartWorld GmbH	Atlantic Haus, Zirkusweg 1 D-20359 Hamburg Germany	Tel: +49 40 853 58 6942 Fax: +49 40 853 58 6949 Email: sales@chartworld.com
ChartWorld Asia Pacific Pte Ltd.	Frontech Centre 07-01, 15 Jalan Kilang Barat, Singapore 159357	Tel: +65 6513 3500  Website: <a href="http://www.chartworld.com">http://www.chartworld.com</a> <a href="http://www.ecdis-as-a-service.com">http://www.ecdis-as-a-service.com</a>
DPM (Singapore) Pte Ltd	2 Boon Leat Terrace, #05-02/03 Harbourside 2, Singapore 119844	Tel: +65 6270 4060 Fax: +65 6276 3858 Email: sales@dpmsingapore.com.sg Website: <a href="http://www.dpmsingapore.com.sg">http://www.dpmsingapore.com.sg</a>
Maritime Information Systems (MARIS)	52, Telok Blangah Road #01-06, Telok Blangah House, Singapore 058809	Tel: +65 6276 1472 Fax: +65 6276 1473 Email: : support@maris.sg Website: <a href="http://www.maris.no">http://www.maris.no</a>
Maritime Information Systems AS (MARIS)	Danholmen 25, 3128 Notteroy, Norway	Tel: +47 33 30 42 50 Fax: +47 33 30 42 51 Email: : sales@maris.no Website: <a href="http://www.maris.no">http://www.maris.no</a>
Motion Smith	15 Jalan Kilang Barat #08-01/05 Frontech Centre, Singapore 159357	Tel: +65 6220 5098 Fax: +65 6225 4902 Email: sales@motsmith.com Website: <a href="http://www.motsmith.com">http://www.motsmith.com</a>
Transas Marine Pacific Pte Ltd	Cyber Centre 16/18 Jalan Kilang Barat Off Jalan Bukit Merah Singapore 159358	Tel: +65 6271 0200 Fax: +65 6271 7300 Email: navigation.asia@transas.com Website: <a href="http://www.transas.com">http://www.transas.com</a>
Japan Hydrographic Association (Electronic Charts Division)	Daiichi Sogo Bldg, 6F 1-6-6, Hanedakuko, Ota-ku Tokyo 144-0041, Japan	Tel: +81 3 5708 7093 Fax: +81 3 5708 7094 Email: shimizu-6kj@jha.jp Website: <a href="http://www.jha.or.jp/en/jha/">http://www.jha.or.jp/en/jha/</a>
Jeppesen Norway AS	P.O Box 212 , N-4371 Egersund, Norway	Tel: +47 51 46 4700 Fax: +47 51 46 4701 Email: license.marine@jeppesen.com Website : <a href="http://www.jeppesen.com/marine">http://www.jeppesen.com/marine</a>
PRIMAR STAVANGER	Lervigsveien 36, P.O Box 60, N-4001 Stavanger, Norway	Tel: +47 51 93 9500 Fax: +47 51 93 9501 Email: sales@ecc.no Website : <a href="http://www.primar.no">http://www.primar.no</a>
The United Kingdom Hydrographic Office	Admiralty Way, Taunton, Somerset, TA1 2DN United Kingdom	Tel: +44 1823 33 7900 Fax: +44 1823 28 4077 Emails: ENCS.SalesReports@ukho.gov.uk Website: <a href="http://www.ukho.gov.uk">http://www.ukho.gov.uk</a>

**Chart Distributors for the Maritime and Port Authority of Singapore**  
**Nautical Charts and Publications**

Please approach any of the Chart Distributors to purchase the Singapore Nautical Charts and Publications.

<b>CHART DISTRIBUTORS</b>	<b>ADDRESS</b>	<b>TEL/FAX/EMAIL/WEBSITE</b>
Cornes (Singapore) Pte Ltd	10 Anson Road #23-06/6A International Plaza Singapore 079903	Tel: +65 6223 8320 Fax: +65 6223 8321 Email: sales9850@cspl.sg Website: <a href="http://www.cornes-charts.com">http://www.cornes-charts.com</a>
DPM (Singapore) Pte Ltd	2 Boon Leat Terrace, #05-02/03 Harbourside 2, Singapore 119844	Tel: +65 6270 4060 Fax: +65 6276 3858 Email: sales@dpmsingapore.com.sg Website: <a href="http://www.dpmsingapore.com.sg">http://www.dpmsingapore.com.sg</a>
E.W. Liner Charts & Publications Pte Ltd	102F, Pasir Panjang Road, #08-01, Citilink Warehouse Complex, Singapore 118530	Tel: +65 6323 0773 Fax: +65 6323 0775 Email: ewliner@singnet.com.sg Website: <a href="http://www.ewliner.com">http://www.ewliner.com</a>
Kelvin Hughes (Singapore) Pte Ltd	896 Dunearn Road #03-05 Sime Darby Centre Singapore 589472	Tel: +65 6545 9880 Fax: +65 6545 8892 Email: leslie.khoo@kelvinhughes.com.sg Website: <a href="http://www.kelvinhughes.com">http://www.kelvinhughes.com</a>
Motion Smith	15 Jalan Kilang Barat #08-01/05 Frontech Centre Singapore 159357	Tel: +65 6220 5098 (After office hours: +65 8163 9993) Fax: +65 6225 4902 Email: sales@motsmith.com Website: <a href="http://www.motsmith.com">http://www.motsmith.com</a>

## **HYDROGRAPHIC NOTE - Instructions**

1. Mariners are requested to notify the Chief Hydrographer, Maritime and Port Authority of Singapore, when new or suspected dangers to navigation are discovered, changes are observed in aids to navigation or where corrections to nautical publications may be necessary. Reports, which cannot be confirmed or are lacking in certain details should not be withheld.
2. Any ambiguities of time, positioning and depth should be stressed and any firm expectation of being able to check the information provided on a following voyage should be mentioned.
3. Mariners using satellite position fixing systems, eg. GPS, should provide details of equipment and datum used (where applicable). Where bearings (true or magnetic) are taken visually or by radar to fix a position, it should include more than two objects in order to provide a check on its accuracy. A position may also be defined by bearing and distance from a conspicuous object eg. beacon, lighthouse etc.
4. The note should include a tracing or a digital image of the chart used and the details should be clearly marked.
5. Echo sounders frequently register greater depths than the advertised maximum depth for the equipment, eg. a trace appearing at 50 metres may be in fact be 550 metres or even 1050 metres for equipment whose maximum depth is 500 metres. Erroneous depths caused by 2nd transmission error can usually be recognised by the following:
  - (a) the tracing being weaker than normal for the depth registered,
  - (b) the trace appearing to pass through the transmission line,
  - (c) the feathery nature of the trace.
6. Upon receipt of a hydrographic note, a Notice to Mariners may be issued. The sender's vessel or name is quoted as the source unless the same information is also received in foreign Notices to Mariners.
7. Reports of shoals, uncharted dangers and defects in aids to navigation may also be made to the appropriate Singapore Port Operations Control Centre on VHF Channels 10, 12, 14, 68 or 73.

## HYDROGRAPHIC NOTE

To:

Chief Hydrographer  
Maritime and Port Authority of Singapore  
460 Alexandra Road PSA Building #20-00  
Singapore 119963

Tel : (65) 6375 1227  
Fax : (65) 6278 7646  
Email : [hydrographic@mpa.gov.sg](mailto:hydrographic@mpa.gov.sg)

### **Sender's Contact Details** :

Date : .....

Name of Vessel : .....

Address of Sender : .....

Tel : ..... Fax : .....

Email : .....

### **Nature of Observation** :

General Location : .....

Subject : .....

Position : Lat. .... Long. ....

Charts Used : .....

Date & Time of Observation : .....

Details :  
.....  
.....  
.....

Attachment : .....

### **Equipment Used** :

Type of Position Fixing : ..... GPS / DGPS ..... Others : .....

Type of Echo Sounder : .....

Name and Signature : .....

Ship's/Company's Stamp : .....