



SINGAPOREAN NOTICES TO MARINERS

SECTION	CONTENT	Page
I	Index of Charts & Publications	1
II	New Publications	9
	Notices to Mariners and Chart Corrections	16
	Temporary and Preliminary Notices	19
III	Navigational Information	20
	Amendments to Publications	22
IV	Reprint of Radio Navigational Warnings	23
V	Extract of Admiralty Notices to Mariners for Dual Badged Charts	24

The monthly Notices to Mariners contain corrective information affecting charts published by the Hydrographic Department, Maritime and Port Authority of Singapore. The information contained in these Notices should be updated on the charts affected. Notices under Section II apply only to the particular Singaporean Chart(s) indicated.

Mariners are requested to notify the Chief Hydrographer, Maritime and Port Authority of Singapore, immediately on the discovery of new dangers or suspected dangers to navigation and of changes or defects in aids to navigation. See Hydrographic Note on back page.

The monthly Singaporean Notices to Mariners can be accessed directly from the MPA website:
[http://www.mpa.gov.sg/sites/port_and_shipping/circulars_and_notices/singapore_notices_to_mariners\(ntm\).page](http://www.mpa.gov.sg/sites/port_and_shipping/circulars_and_notices/singapore_notices_to_mariners(ntm).page)

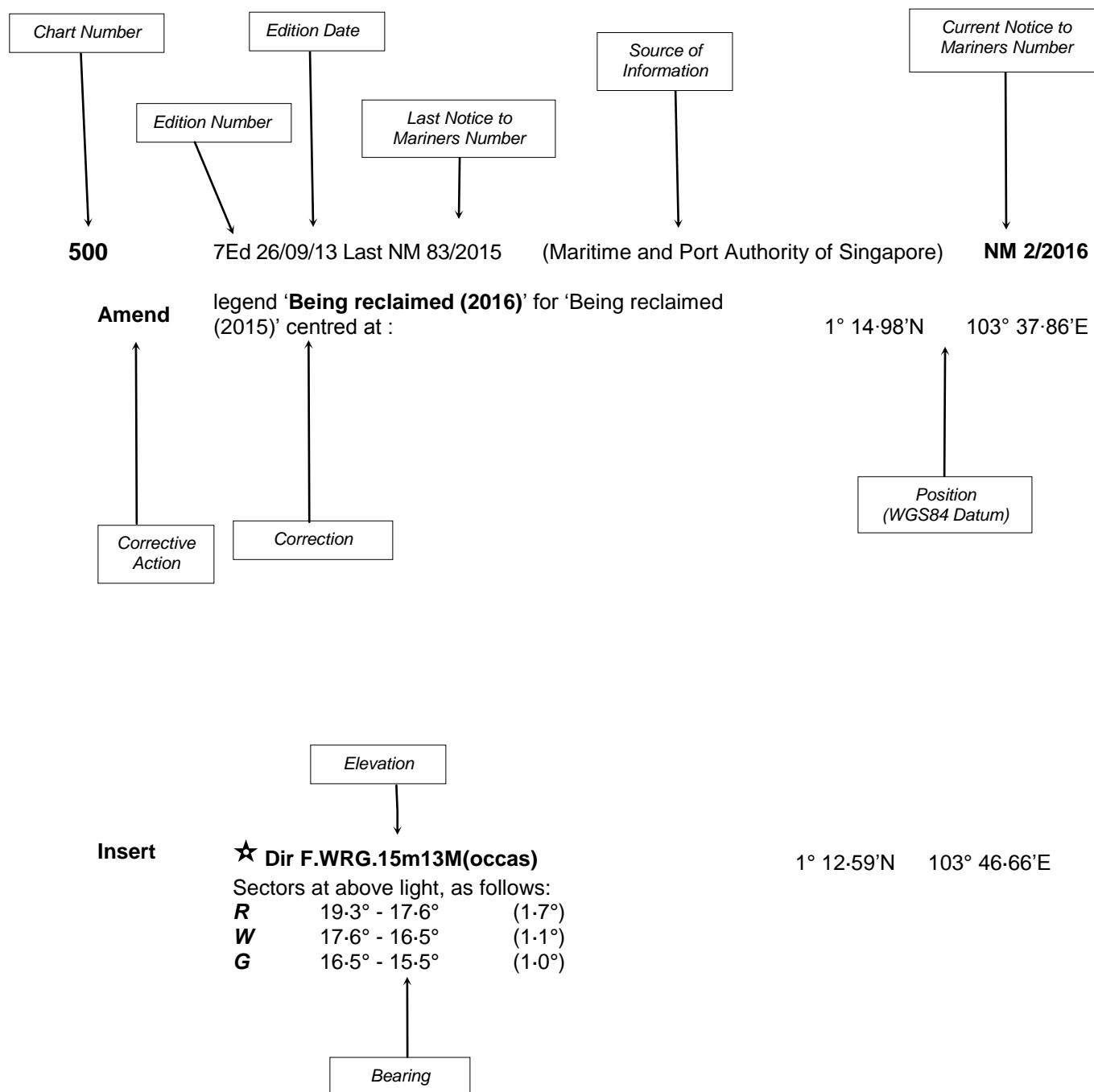
The Chief Hydrographer of
Maritime and Port Authority of Singapore
wishes all users of Singaporean and Dual Badged Charts

A HAPPY NEW YEAR

Hydrographic Department
Maritime and Port Authority of Singapore
7B Keppel Road
#20-00 Tanjong Pagar Complex
Singapore 089055
Tel: (65) 6325 2027 Fax: (65) 6226 1076
Email: hydrographic@mpa.gov.sg

EXPLANATION OF FORMAT

The elements of a typical chart correction are explained below.



Notes:

- Notice to Mariners number followed by:
T indicates a Temporary Notice (eg. **NM 3T/2016**).
P indicates a Preliminary Notice (eg. **NM 4P/2016**).
- Bearings are true reckoned clockwise from 000° to 359° ; those relating to lights are from seaward.
- Heights and elevations are above Mean High Water Springs.

I
INDEX OF CHARTS AND PUBLICATIONS

INDEX OF AFFECTED CHARTS

DESCRIPTION	NOTICE NO.	PAGE NO.
Index of Singaporean Charts	-	3, 4
Index of Dual-Badged Charts	-	5 to 7
Index of Singapore Electronic Navigational Chart (ENC)	-	8
New Edition Charts for Small Craft 2016	-	9
New Edition Dual Badged Chart	-	9
New Edition Singapore ENC	-	9
New Edition Singaporean Chart	-	10
Singapore Port Information Year 2016/2017	-	11,12
Singapore Tide Tables Year 2016	-	13 to 15
Numerical Index to Notices to Mariners of 2015	*1	16
Singaporean Chart GSP1/SP1	*2	17
Singaporean Chart 202	3	17
Singaporean Chart 500	3	17,18
Temporary and Preliminary Notices	*4P	19
Singapore Port Marine Notices/Circulars	*5	20
Singaporean Print-On-Demand (POD) Charts	*6	21
Amendments to Publications	-	22
Reprint of Radio Navigational Warnings	-	23
Extract of Admiralty Notices to Mariners for Dual-Badged Charts	-	24
Singapore Electronic Navigational Chart (ENC) Distributors	-	25
Chart Distributors for the Maritime and Port Authority of Singapore Nautical Charts and Publications	-	26

*Source: Maritime and Port Authority of Singapore

I
INDEX OF CHARTS AND PUBLICATIONS

INDEX OF NOTICES

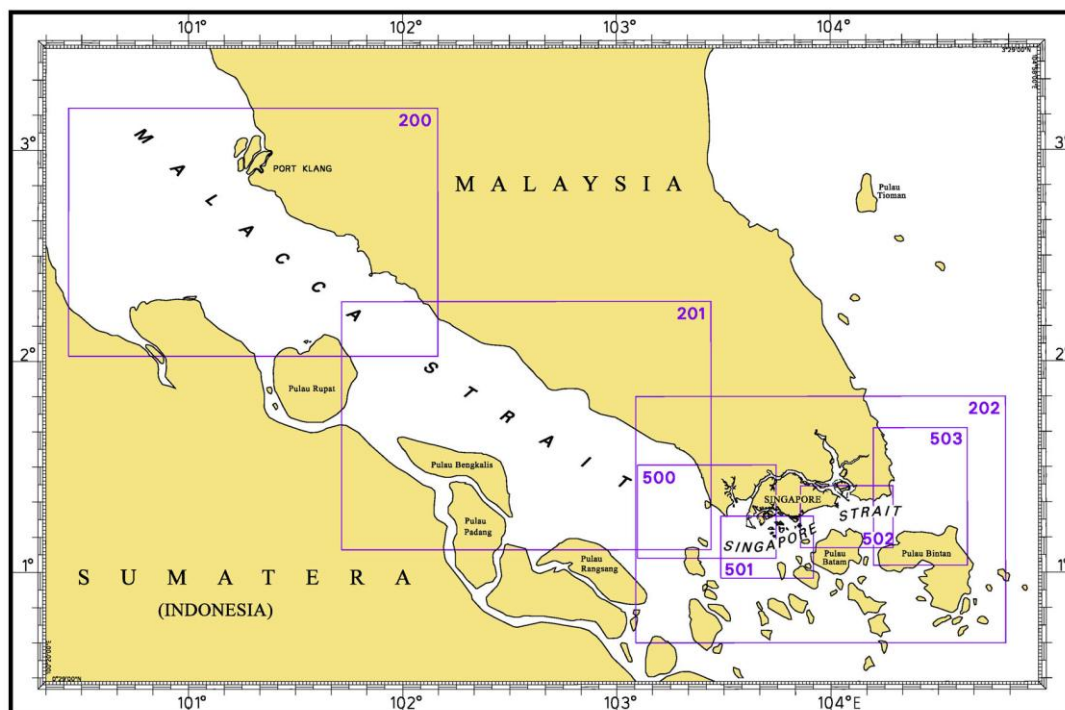
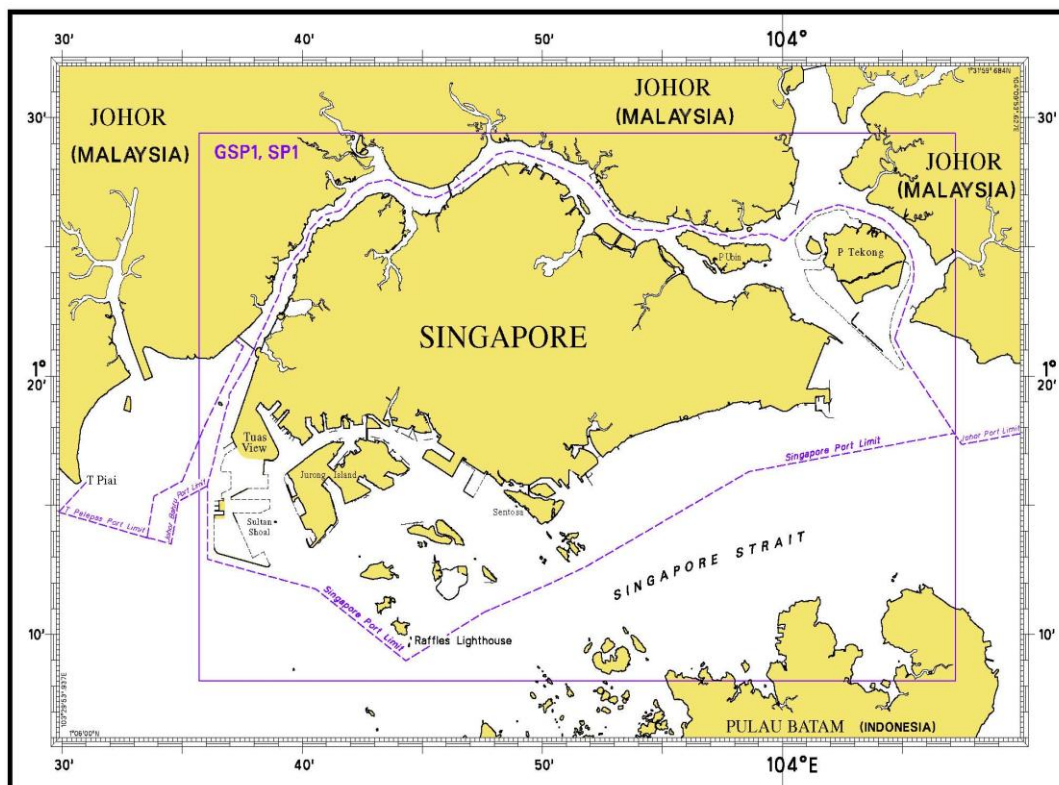
NOTICE NO.	DESCRIPTION	PAGE NO.
-	Index of Singaporean Charts	3, 4
-	Index of Dual-Badged Charts	5 to 7
-	Index of Singapore Electronic Navigational Chart (ENC)	8
-	New Edition Charts for Small Craft 2016	9
-	New Edition Dual Badged Chart	9
-	New Edition Singapore ENC	9
-	New Edition Singaporean Chart	10
-	Singapore Port Information Year 2016/2017	11,12
-	Singapore Tide Tables 2016	13 to 15
*1	Numerical Index to Notices to Mariners of 2015	16
*2	Singaporean Chart GSP1/SP1	17
3	Singaporean Chart 202	17
3	Singaporean Chart 500	17,18
*4P	Temporary and Preliminary Notices	19
*5	Singapore Port Marine Notices/Circulars	20
*6	Singaporean Print-On-Demand (POD) Charts	21
-	Amendments to Publications	22
-	Reprint of Radio Navigational Warnings	23
-	Extract of Admiralty Notices to Mariners for Dual-Badged Charts	24
-	Singapore Electronic Navigational Chart (ENC) Distributors	25
-	Chart Distributors for the Maritime and Port Authority of Singapore Nautical Charts	26

* Source: Maritime and Port Authority of Singapore

I

INDEX OF CHARTS AND PUBLICATIONS

INDEX OF SINGAPOREAN CHARTS



Notes:

Updated Singaporean Charts are available through our Print-On-Demand (POD) Chart Service. For more information, refer to Section III – Navigational Information. These charts can be purchased from our Chart Distributors.

I
INDEX OF CHARTS AND PUBLICATIONS

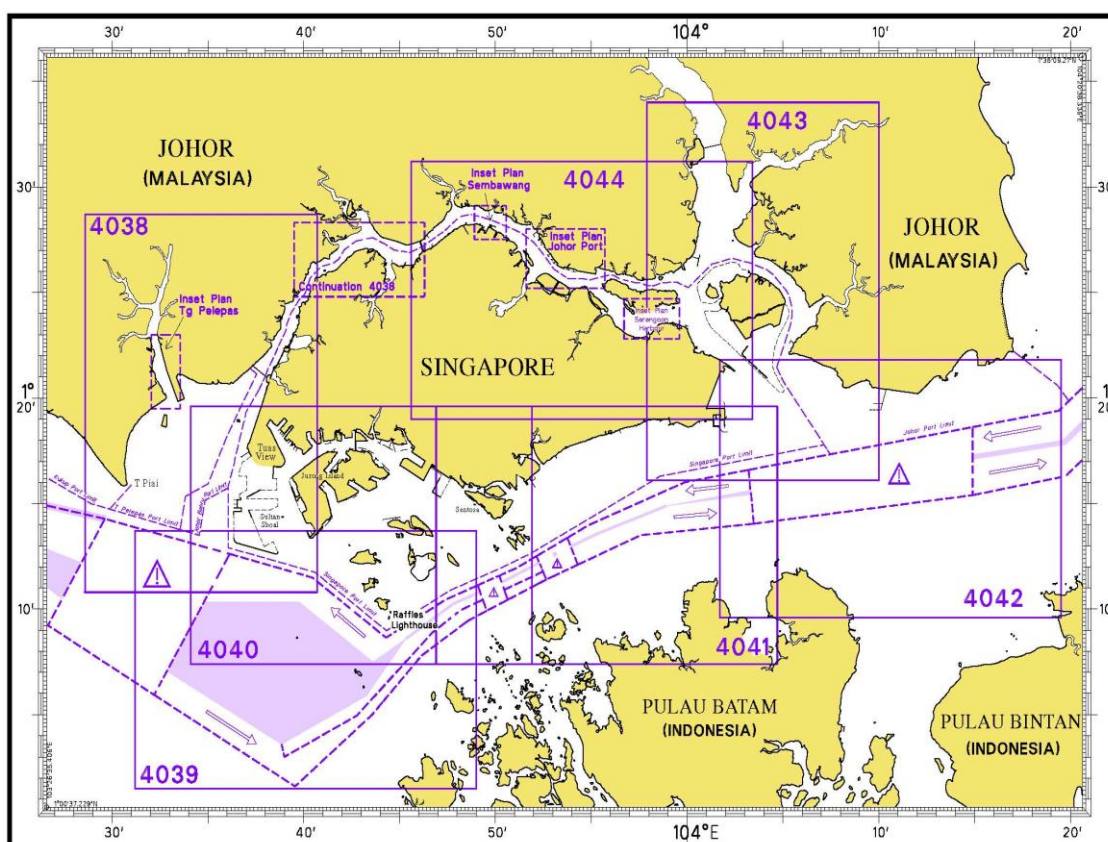
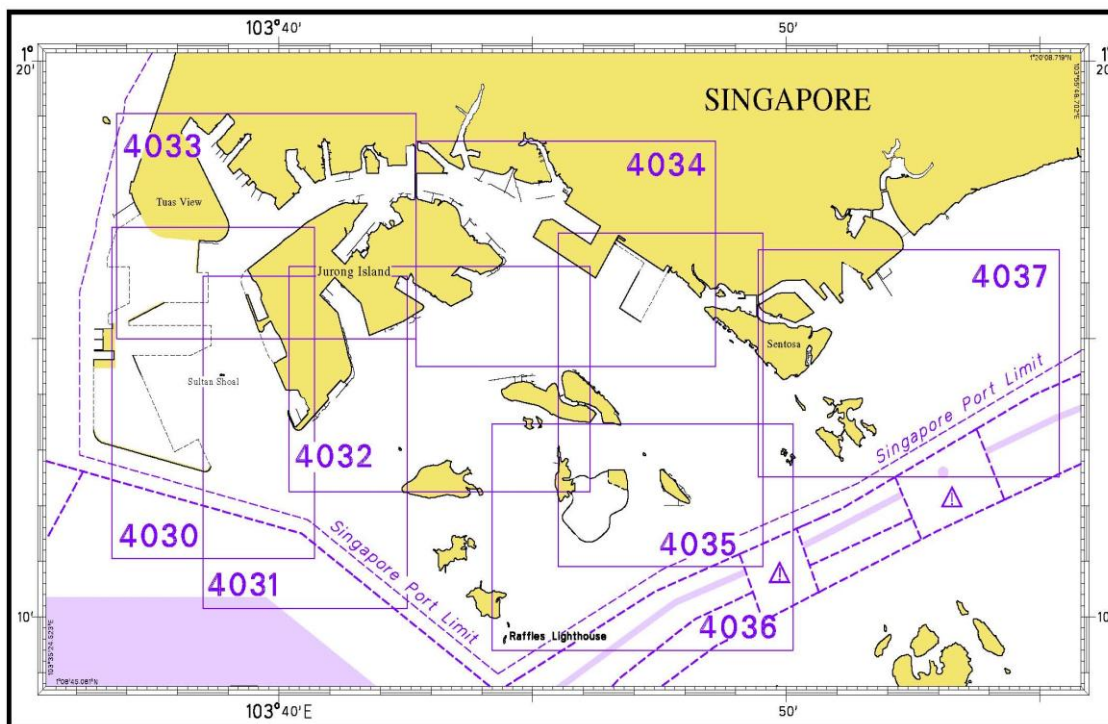
SINGAPOREAN CHARTS

Chart No.	Chart Title	Scale 1:	Date Published of Latest Edition
GSP1	Anchorage and Aids to Navigation (with Area Reference)	60 000	02/03/2015
SP1	Anchorage and Aids to Navigation	60 000	02/03/2015
200	Malacca Strait - Port Klang to Tanjung Keling	200 000	01/09/2015
201	Malacca Strait - Tanjung Keling to Western Entrance of Singapore Strait	200 000	15/08/2014
202	Singapore Strait	200 000	26/09/2013
500	Malacca and Singapore Straits – Pulau Pisang to Raffles Lighthouse	75 000	26/09/2013
501	Singapore Strait – Western Part	50 000	01/09/2015
502	Singapore Strait - Eastern Part	50 000	01/09/2015
503	South China Sea - Eastern Approaches and Entrance to Singapore Strait	75 000	15/08/2014
-	Charts for Small Craft – Singapore Port Waters and Approaches	10 000 to 200 000	January 2016
1	Symbols Abbreviations Terms and S-57 Objects used on Singapore Nautical and Electronic Navigational Charts. Available at MPA website: http://www.mpa.gov.sg	-	28/07/2011

I

INDEX OF CHARTS AND PUBLICATIONS

DUAL-BADGED CHARTS



I
INDEX OF CHARTS AND PUBLICATIONS

DUAL- BADGED CHARTS

Chart No.	Chart Title	Scale 1:	Date Published of Latest Edition
4030	Port of Singapore West Jurong Anchorages and Temasek Fairway	10 000	07/05/2015
4031	Port of Singapore Western Approaches to Jurong Island	10 000	07/05/2015
4032	Port of Singapore Sinki Fairway	10 000	15/05/2014
4033	Port of Singapore Tuas Bay, West Jurong Channel and Pesek Basin	10 000	07/05/2015
4034	Port of Singapore East Jurong Channel, Pasir Panjang Terminal and West Keppel Fairway	10 000	28/05/2015
4035	Port of Singapore Western Anchorages, Jong Fairway and Cruise Bay	10 000	28/05/2015
4036	Port of Singapore Raffles Lighthouse to The Sisters	10 000	28/05/2015
4037	Port of Singapore Keppel Harbour, Tanjong Pagar Terminal and Approaches	10 000	28/05/2015
4038	Malaysia and Singapore Johor Strait – Western Part	30 000	26/09/2013
4039	Indonesia, Singapore and Malaysia Western Approaches to Main Strait	30 000	24/04/2014
4040	Singapore, Indonesia and Malaysia Tuas View to Pulau Sakijang Bendera (S. John's Island)	30 000	27/08/2015
4041	Singapore and Indonesia Pulau Sebarok to Changi	30 000	27/08/2015

I
INDEX OF CHARTS AND PUBLICATIONS

DUAL- BADGED CHARTS

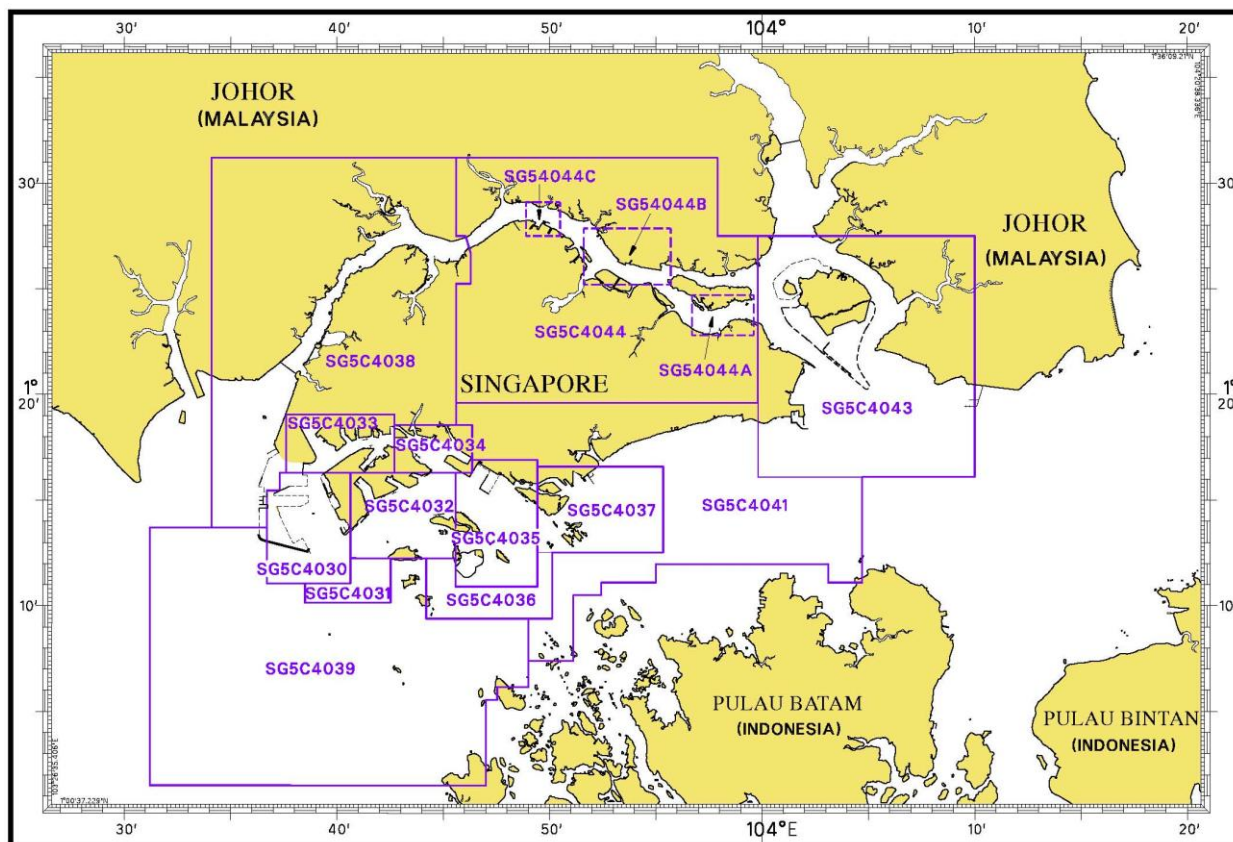
Chart No.	Chart Title	Scale 1:	Date Published of Latest Edition
4042	Indonesia, Malaysia and Singapore Changi to Pulau Mungging and Tanjung Buntan to Tanjung Tondang	30 000	24/04/2014
4043	Malaysia and Singapore Kuala Johor and Sungai Johor	30 000	09/04/2015
4044	Singapore and Malaysia Johor Strait - Eastern Part	30 000	09/04/2015

SINGAPOREAN PUBLICATIONS

Item	Title
1	Singapore Tide Tables Year 2016
2	Singapore Port Information 2016/2017

I INDEX OF CHARTS AND PUBLICATIONS

INDEX OF SINGAPORE ELECTRONIC NAVIGATIONAL CHART (ENC)



SINGAPORE ELECTRONIC NAVIGATIONAL CHART (ENC)

ENC Name	ENC Coverage	ENC Edition
SG5C4030	West Jurong Anchorages and Temasek Fairway	8 th Edition (7/05/2015)
SG5C4031	Western Approaches to Jurong Island	7 th Edition (1/09/2014)
SG5C4032	Sinki Fairway	10 th Edition (7/05/2015)
SG5C4033	Tuas Bay, West Jurong Channel and Pesek Basin	8 th Edition (7/05/2015)
SG5C4034	East Jurong Channel, Pasir Panjang Terminal and West Keppel Fairway	13 th Edition (28/05/2015)
SG5C4035	Western Anchorages, Jong Fairway and Cruise Bay	16 th Edition (28/05/2015)
SG5C4036	Raffles Lighthouse to The Sisters	9 th Edition (28/05/2015)
SG5C4037	Keppel Harbour, Tanjong Pagar Terminal and Approaches	9 th Edition (28/05/2015)
SG5C4038	Johor Strait – Western Part	8 th Edition (27/08/2015)
SG5C4039	Western Approaches to Main Strait	8 th Edition (27/08/2015)
SG5C4041	Pulau Sebarok to Changi	9 th Edition (27/08/2015)
SG5C4043	Kuala Johor	11 th Edition (9/04/2015)
SG5C4044	Johor Strait – Eastern Part	11 th Edition (9/04/2015)
SG54044A	Serangoon Harbour	2 nd Edition (9/04/2015)
SG54044B	Pelabuhan Johor (Johor Port)	2 nd Edition (9/04/2015)
SG54044C	Sembawang	2 nd Edition (9/04/2015)

The latest edition of the Singapore ENC covering Singapore Waters and their approaches can be found in our monthly Singaporean Notices to Mariners at MPA website: [http://www.mpa.gov.sg/sites/port_and_shipping/port/charts_tidal_information_and_hydrography/charts/singapore_electronic_navigational_chart\(enc\).page](http://www.mpa.gov.sg/sites/port_and_shipping/port/charts_tidal_information_and_hydrography/charts/singapore_electronic_navigational_chart(enc).page)

II NEW PUBLICATIONS

NEW EDITION CHART TO BE PUBLISHED ON 4TH JANUARY 2016

Chart Number	: CHARTS FOR SMALL CRAFT
Title	: Singapore Port Waters and Approaches – 2016 Edition
Date Published	: 4 th January 2016
Size of chart	: 600 x 400 mm
Remarks	: The publication contains 12 Small Craft Charts and related nautical information bound into an atlas. The symbols, abbreviations and term depicted on these charts are consistent with the International Hydrographic Organization Chart Standards and Specifications. (Refer MPA website http://www.mpa.gov.sg) Symbols for the locations of pleasure craft facilities and areas for sea sport activities such as board sailing, dinghy sailing, keelboat sailing, power-boating and water-skiing are also included and highlighted in red.



Chart of the same publication Edition 2015 published on 2nd January 2015 will be superseded.

NEW EDITION DUAL BADGED CHART TO BE PUBLISHED ON 25TH FEBRUARY 2016

Chart Number	: 4038
Title	: Malaysia and Singapore Johor Strait, Western Part
Coverage	: Lat 01° 10-80' N 01° 28-70' N Long 103° 28-60' E 103° 40-70' E
Scale	: 1: 30 000
Date Published	: 25 th February 2016
Size of Chart	: 750.6 x 1100.2 mm
Remarks	: This new edition includes updates covering Temasek Fairway, West Jurong Channel, Sudong Anchorage, west of Tuas View Extension, West Johor Strait and Tanjung Pelepas.

The existing chart of the same number published on 26th September 2013 will be superseded.

NEW EDITION SINGAPORE ENC TO BE RELEASED ON 25TH FEBRUARY 2016

ENC Name	: SG5C4038
Location	: Johor Strait – Western Part
Coverage	: Lat 01° 13-70' N 01° 31-20' N Long 103° 34-10' E 103° 46-34' E
Compilation Scale	: 1: 22 000
Date Released	: 25 th February 2016
Descriptions	: This new edition includes updates covering Temasek Fairway, West Jurong Channel, Sudong Anchorage, west of Tuas View Extension, West Johor Strait and Tanjung Pelepas.

The existing cell of the same name released on 27th August 2015 will be superseded.

II NEW PUBLICATIONS

NEW EDITION SINGAPOREAN CHART TO BE PUBLISHED ON 15TH FEBRUARY 2016

Chart Number	:	*GSP1
Title	:	Anchorage and Aids to Navigation
Coverage	:	Lat 01° 06' 43" N 01° 29' 40" N Long 103° 34' 00" E 104° 08' 10" E
Scale	:	1: 65 000
Date Published	:	15 th February 2016
Size of Chart	:	973.2 x 651.3mm
Descriptions	:	This new edition covers the eastern and western approaches to the port of Singapore. It includes updates on aids to navigation, working areas, submarine cables, updated contours covering west of Tuas View Reclamation, West Johor Strait, Temasek Fairway, West Jurong Channel, East Jurong Channel, Pasir Panjang, West Keppel Fairway, Western anchorages, Buran Channel, East Keppel Fairway, south of St John Island, East Johor Strait and around Pulau Tekong.

The existing chart of the same number published on 2nd March 2015 will be superseded.

* This chart is provided with a grid area reference.

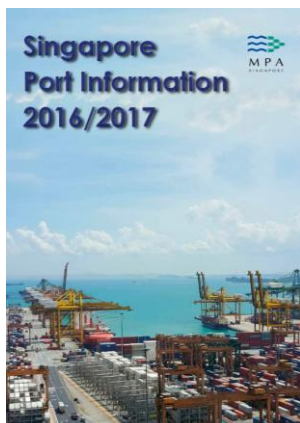
Chart Number	:	SP1
Title	:	Anchorage and Aids to Navigation
Coverage	:	Lat 01° 06' 43" N 01° 29' 40" N Long 103° 34' 00" E 104° 08' 10" E
Scale	:	1: 65 000
Date Published	:	15 th February 2016
Size of Chart	:	973.2 x 651.3mm
Descriptions	:	This new edition covers the eastern and western approaches to the port of Singapore. It includes updates on aids to navigation, working areas, submarine cables, updated contours covering west of Tuas View Reclamation, West Johor Strait, Temasek Fairway, West Jurong Channel, East Jurong Channel, Pasir Panjang, West Keppel Fairway, Western anchorages, Buran Channel, East Keppel Fairway, south of St John Island, East Johor Strait and around Pulau Tekong.

The existing chart of the same number published on 2nd March 2015 will be superseded.

II NEW PUBLICATIONS

NEW EDITION SINGAPORE PORT INFORMATION 2016/2017 TO BE PUBLISHED ON 4TH JANUARY 2016

Summary of Publication



This publication contains Port Information such as:

1. Routing and Reporting Information

- ❖ Straits Of Malacca And Singapore- Routeing System
- ❖ Mandatory Ship Reporting System In The Straits Of Malacca And Singapore – STRAITREP
- ❖ Rules For Vessels Navigating During Hours Of Darkness Through The Straits Of Malacca
- ❖ And Singapore (Recommendatory Measure)
- ❖ Revised Reporting Procedures For Notification And Confirmation Of A Vessel's Arrival In Singapore
- ❖ Amendment To Reporting Procedures For Vessels Manoeuvring In Port
- ❖ Guide To VHF Communication In Port And Singapore Strait
- ❖ VHF Radio Telephone Reporting Procedures For Vessel Manoeuvring Within The Traffic Information Area (TIA) In The East Johor Strait
- ❖ Tall Vessels' Movements In Port Waters Surrounding Changi Airport
- ❖ 15-Metre, 30-Metre, 49-Metre Height Restricted Areas In Port

2. Pilotage and Pilotage Exemption Information

- ❖ Pilotage
- ❖ Pilotage Exemption Course

3. Port Clearances and Reporting Procedures

- ❖ Port Health Clearance Procedures For Vessels Arriving Singapore
- ❖ Port Clearance Formalities For Arriving And Departing Vessels
- ❖ Reporting Of Marine Incidents In Port
- ❖ Dissemination Of Passage Plan To Shipmasters
- ❖ Conduct Of Mandatory Port Limit Courses
- ❖ Facilities For The Collection Of Garbage From Ships In Singapore
- ❖ Singapore Port Dues

4. Navigational Information

- ❖ Anchorages And Fairways , Least Depths Of Anchorages In The Port
- ❖ The Use Of Canoes And Kayaks Within The Port Limits Of Singapore
- ❖ Depths Of Navigational Channels ,Fairways, Rivers And Basins
- ❖ Vertical And Safe Overhead Clearances Under Bridges And Aerial Cableway

5. Information on Aids to Navigation

- ❖ IALA Maritime Buoyage System
- ❖ Characteristics Of Aids To Navigation - List Of Beacons, Buoys And Lighthouses
- ❖ Abbreviations For Light Characters And Colours On Light Buoys And Beacons
- ❖ Semaphore Tower At Pulau Satumu - Raffles Lighthouse

6. Information on Wharves, Docks and Berths

- ❖ Wharves And Berths
- ❖ Docks And Repair Berths Including Tug Facilities
- ❖ Berth Operators' Information And Tug Service Providers In Port

7. Communication – International Code of Signals

- ❖ International Code Of Signals (1969)
- ❖ Code Signals Frequently Used By Vessels Within Port Limits
- ❖ Sound Signals Frequently Used By Vessels Within Port Limits
- ❖ Directions To Tug From Assisted Vessel

II NEW PUBLICATIONS

8. Nautical Services and Products

- ❖ Index And Chart Catalogue Of Singaporean Charts
- ❖ Index And Chart Catalogue Of Dual Badged Charts
- ❖ Maritime and Port Authority of Singapore - Nautical Charts and Publications Distributors
- ❖ Singapore Electronic Navigational Charts Catalogue and Distributors
- ❖ Feedback Form
- ❖ Singapore DGPS Correction Service

9. Chartlets

- ❖ STRAITREP Operational Area (Sectors 1 To 9) and (Sectors 7 To 9)
- ❖ Reporting Points For Confirmation Of Arrivals
- ❖ Reporting Sectors
- ❖ Traffic Information Area
- ❖ Area In Which Tall Vessels Would Affect Aircraft Operations In Port Waters
- ❖ 15-Metre, 30-Metre, 49-Metre Height Restricted Areas
- ❖ Pilotage District Areas A, B And D
- ❖ Pilot Boarding Grounds
- ❖ Pilot Disembarkation Grounds
- ❖ Anchorages And Fairways In The Port
- ❖ Port of Singapore – Prohibited Areas
- ❖ Index of Singaporean Charts.
- ❖ Index of Dual Badged Charts

It will be useful for the following users:

Mariners, shipping community, port users and other interested users.

Frequency / Year of Publication:

Once every 2 years.

This publication would be available from the following Chart Distributors:

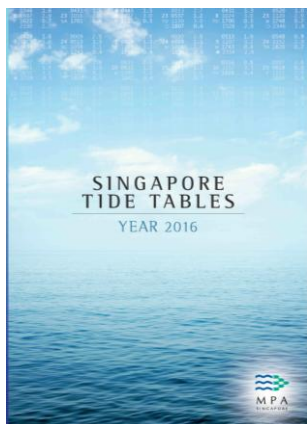
- 1) Cornes (Singapore) Pte Ltd
- 2) DPM (Singapore) Pte Ltd
- 3) E.W. Liner Charts & Publications Pte Ltd
- 4) Kelvin Hughes (Singapore) Pte Ltd
- 5) Motion Smith

(Please refer Page 26 for details)

II NEW PUBLICATION

SINGAPORE TIDE TABLES YEAR 2016 PUBLISHED ON 9TH SEPTEMBER 2015

Summary of Publication



This publication contains Tidal Height and Tidal Stream Predictions covering stations in Singapore Port Waters and along the Straits of Malacca and Singapore.

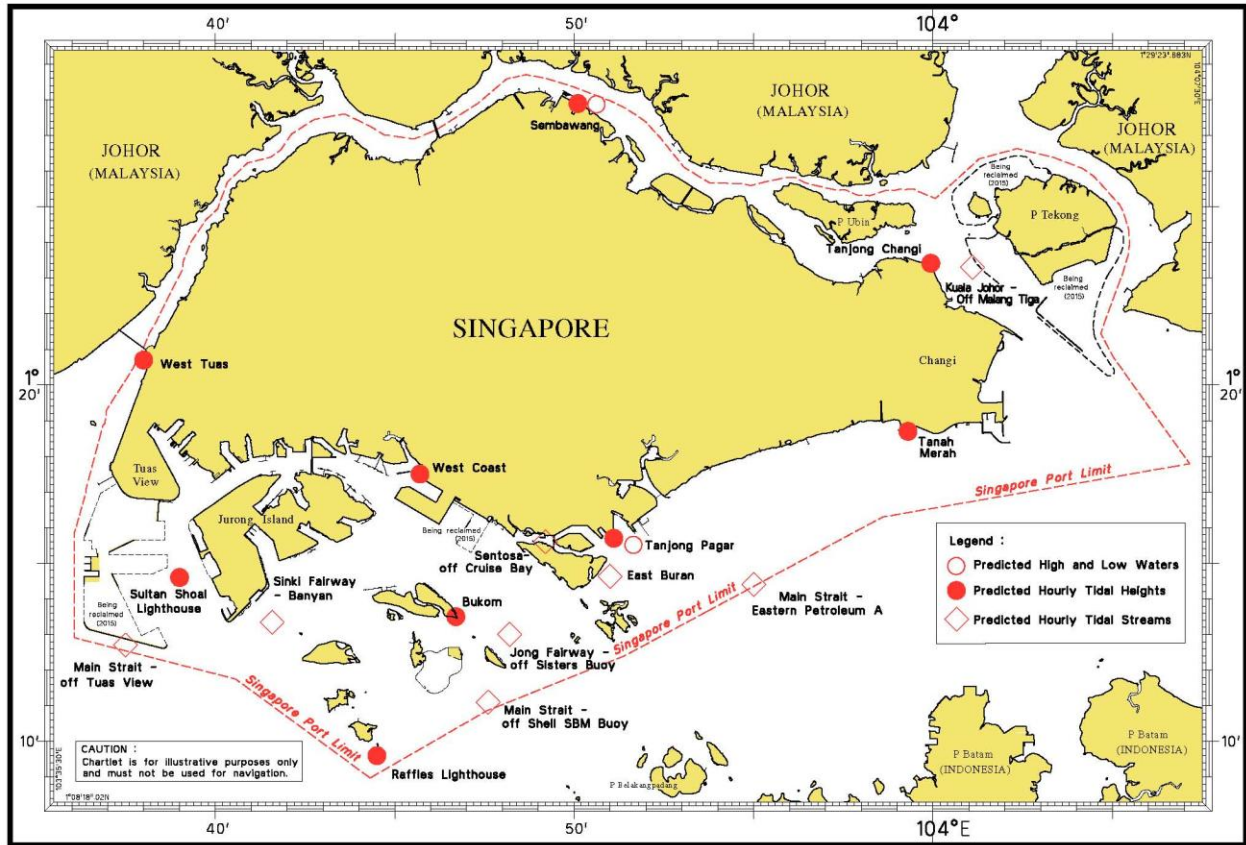
This publication consists of 5 segments.

1. **High and Low Water Predictions** at the following stations:
 - a) Tanjong Pagar
 - b) Sembawang
2. **Hourly Tidal Height Predictions** at the following stations:
 - a) West Tuas
 - b) Sultan Shoal Lighthouse
 - c) Raffles Lighthouse
 - d) West Coast
 - e) Bukom
 - f) Tanjong Pagar
 - g) Tanah Merah
 - h) Tanjong Changi
 - i) Sembawang
 - j) Singapore Strait – Horsburgh Lighthouse
3. **Hourly Tidal Stream Predictions** at the following stations:
 - a) Main Strait – off Tuas View
 - b) Sinki Fairway – Banyan
 - c) Jong Fairway – off Sisters Buoy
 - d) Main Strait – off Shell SBM Buoy
 - e) Sentosa – off Cruise Bay
 - f) East Buran
 - g) Main Strait – Eastern Petroleum A
 - h) Kuala Johor – off Malang Tiga
4. **Maximum and Slack Tidal Stream Predictions** at the following stations:
 - a) Malacca Strait – off Pulau Iyu Kecil Light
 - b) Singapore Strait – Selat Phillip
 - c) Singapore Strait – Karang Banteng (Buffalo Rock)
 - d) Singapore Strait – Horsburgh Lighthouse
5. **Malacca Strait – High and Low Water Predictions** at the following stations:
 - a) Kedah Pier, Pulau Pinang
 - b) Port Dickson
 - c) Kuala Batu Pahat

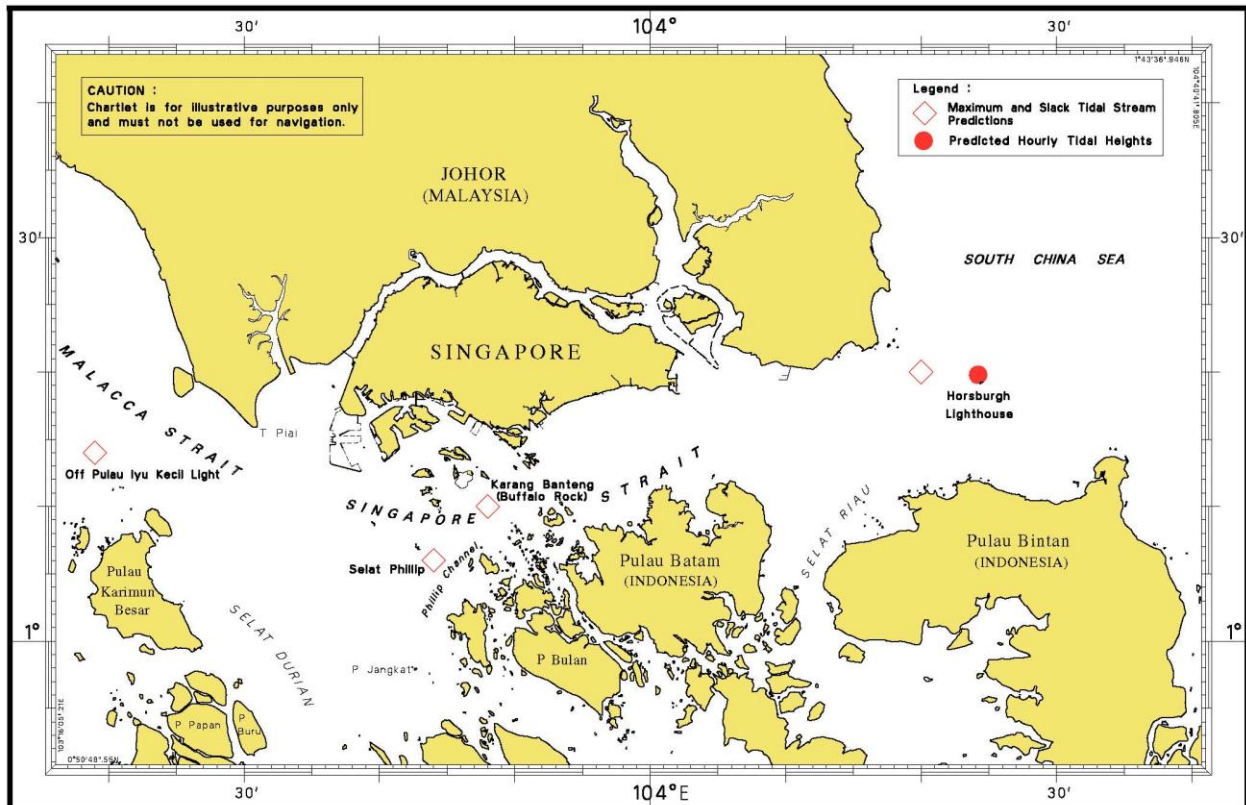
The locations of the above stations are shown in the chartlets below:

II NEW PUBLICATION

Tidal Prediction Stations within Singapore Port Waters

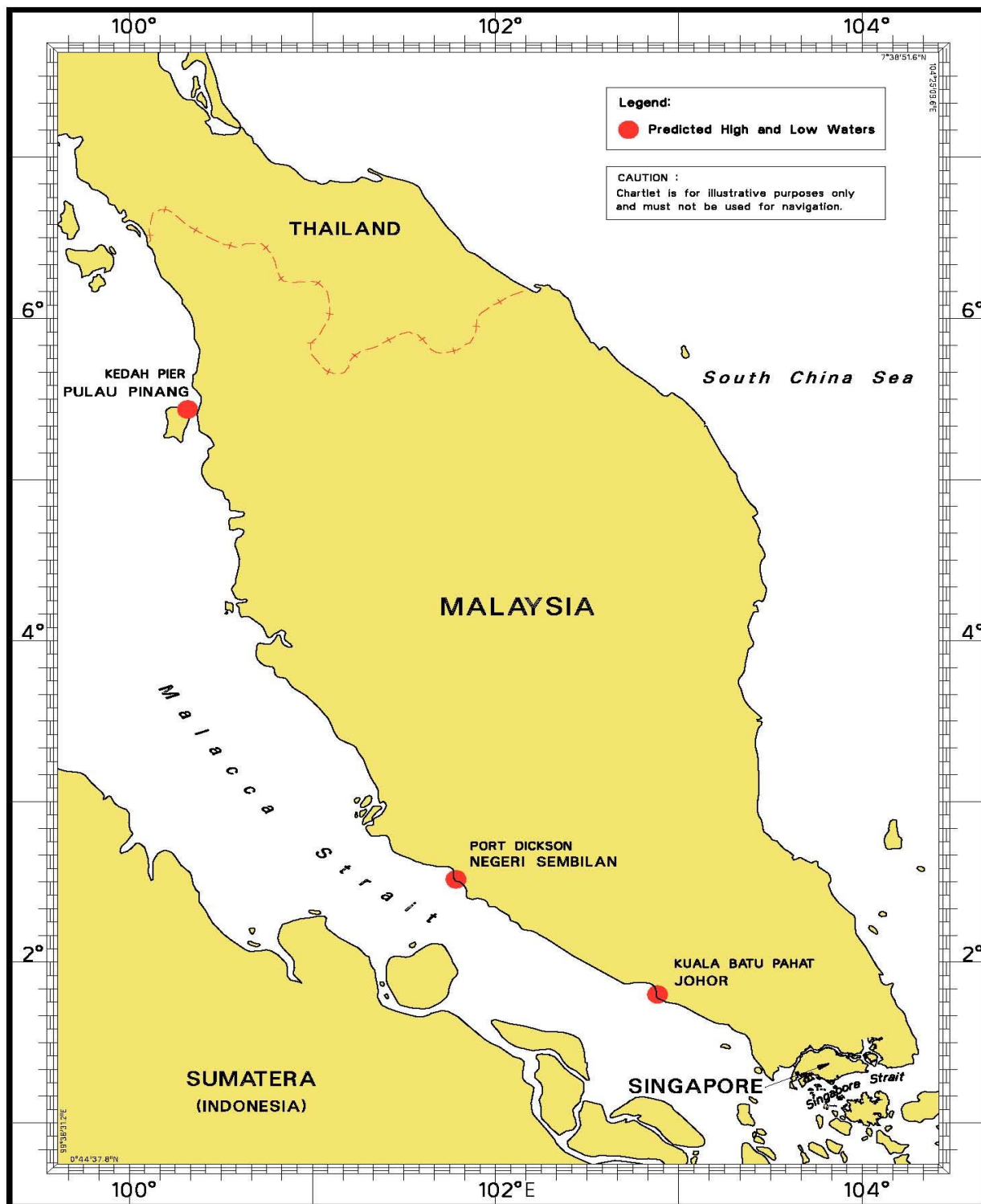


Tidal Prediction Stations in Straits of Malacca and Singapore



II NEW PUBLICATION

Tidal Prediction Stations in Malacca Strait



This publication is available from the following Chart Distributors:

1. Cornes Singapore Pte Ltd
2. DPM (Singapore) Pte Ltd
3. E.W. Liner Charts & Publications Pte Ltd
4. Kelvin Hughes (Singapore) Pte Ltd
5. Motion Smith

(Please refer Page 26 for details)

II NOTICES TO MARINERS AND CHART CORRECTIONS

*(NM 1/2016) NUMERICAL INDEX TO NOTICES TO MARINERS OF 2015 (1 TO 104T)

MONTH	NOTICES TO MARINERS NO.
JANUARY 2015	1 to 14T
FEBRUARY 2015	15 to 21
MARCH 2015	23 to 29
APRIL 2015	30 to 37
MAY 2015	38 to 48
JUNE 2015	49 to 58
JULY 2015	59 to 66
AUGUST 2015	67 to 73
SEPTEMBER 2015	74 to 82
OCTOBER 2015	83 to 90
NOVEMBER 2015	91 to 97
DECEMBER 2015	98 to 104T

CHART NO.	PUBLISHED	YEAR	NOTICES TO MARINERS NO.
GSP1, SP1	10 Ed 2/03/15	2015	23-24-30-31-32-38-39-49-50-51-59-67-68-69-74-83-84-85-91-92-98-99
200	4 Ed 1/09/15	2015	None
201	5 Ed 15/08/14	2015	7-40-41-52-53-62-70-76-77-86
202	7 Ed 26/09/13	2015	1-17-25-31-42-63-74-87-100
500	7 Ed 26/09/13	2015	38-50-59-74-83-100
501	7 Ed 1/09/15	2015	100
502	7 Ed 1/09/15	2015	92
503	5 Ed 15/08/14	2015	31-42-63

II NOTICES TO MARINERS AND CHART CORRECTIONS

GSP1/SP1 10Ed 2/03/15 Last NM 98/2015 (Maritime and Port Authority of Singapore) ***NM 2/2016**

Delete Beacon, Fl.Y.2.5s 1°16'12"N 103°47'74"E

202 5Ed 15/08/14 Last NM 100/2015 (DGST NTM NR 175/15) **NM 3/2016**

Insert

 **Fl.10s with radar reflector** 1°04'59"N 103°18'61"E

 **Q** 1°09'40"N 103°18'43"E

 **Fl.G.4s** 1°09'36"N 103°17'26"E

 **Fl.G.4s** 1°07'89"N 103°15'54"E

 **Al.Bu.Y.4s** 1°05'70"N 103°15'11"E

 **Fl.R.4s** 1°08'85"N 103°17'02"E

 **Fl.G.4s** 1°03'83"N 103°17'85"E

 **Fl.R.3s** 1°03'69"N 103°17'23"E

 **Fl.R.3s** 1°04'85"N 103°15'06"E

500 7Ed 26/09/13 Last NM 100/2015 (DGST NTM NR 175/15) **NM 3/2016**

Insert  **Fl.10s20m12M with radar reflector** 1°04'59"N 103°18'61"E

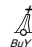

 **Fl.Y.4s13m8M with radar reflector** 1°04'42"N 103°18'33"E

 **Fl.Y.4s13m8M with radar reflector** 1°04'80"N 103°18'34"E

 **Q** 1°09'40"N 103°18'43"E

 **Fl.G.4s** 1°09'36"N 103°17'26"E

II NOTICES TO MARINERS AND CHART CORRECTIONS

 Fl.G.4s	1°07.89'N	103°15.54'E
 Al.Bu.Y.4s	1°05.70'N	103°15.11'E
 Fl.R.4s	1°08.85'N	103°17.02'E
 Fl(2)10s	1°04.98'N	103°18.03'E
 Fl.R.3s	1°04.85'N	103°15.06'E

II TEMPORARY AND PRELIMINARY NOTICES

*(NM 4P/2016)

SOUTH EAST ASIA – MIDDLE EAST – WESTERN EUROPE 5 CABLE SYSTEM (SEA-ME-WE 5) - CABLE LAYING OPERATIONS

Purpose : Submarine cable laying operations for the SEA-ME-WE 5 will be executed in the Precautionary Area Off Sultan Shoal Lighthouse and in the east-bound traffic lane of the Straits of Malacca and Singapore Traffic Separation Scheme.

Cable-Laying Vessel : 'CS FU HAI'

Call Sign : 3EGX3

Planned Dates of Operation : With effect from 21st January 2016 until 15th February 2016. 24 hours daily.

1. Working Route

The co-ordinates (WGS84) of the designated working route are tabulated below:

Waypoint		Co-ordinates (WGS84)		Remarks
		Latitude (N)	Longitude (E)	
From	28	01° 11.059'	103° 32.913'	Precautionary Area (Off Sultan Shoal Lighthouse)
To	30	01° 11.271'	103° 31.363'	
To	31	01° 11.846'	103° 29.882'	
To	32	01° 11.880'	103° 29.578'	
To	33	01° 11.901'	103° 29.391'	
To	36	01° 12.277'	103° 27.917'	
To	37	01° 12.578'	103° 26.889'	Separation Zone (Malacca to Iyu Kecil)
To	38	01° 12.687'	103° 26.110'	
To	39	01° 12.713'	103° 25.722'	
To	40	01° 12.898'	103° 25.111'	
To	41	01° 13.013'	103° 24.238'	
To	42	01° 13.108'	103° 23.978'	
To	43	01° 13.172'	103° 23.722'	
To	45	01° 13.545'	103° 22.702'	East-Bound Traffic Lane (Malacca to Iyu Kecil)
To	46	01° 14.078'	103° 21.174'	
To	47	01° 14.118'	103° 20.840'	
To	48	01° 14.156'	103° 20.359'	
To	49	01° 14.474'	103° 19.500'	
To	50	01° 14.478'	103° 19.478'	
To	51	01° 14.517'	103° 19.206'	
To	52	01° 14.486'	103° 18.953'	

2. Charts Affected : Singaporean 202, 500 and 501; Dual-Badged BA4038, BA4039 and BA4040; Singapore ENC SG5C4039.

3. Caution : Mariners are advised

- a) to navigate with caution.
- b) to give a wide berth when approaching the cable-laying vessel.

*Source: Maritime and Port Authority of Singapore

III NAVIGATIONAL INFORMATION

*(NM 5/2016) SINGAPORE PORT MARINE NOTICES/CIRCULARS

The Port Marine Notices/Circulars shortlisted below would be of particular interest to mariners. Details and complete list of Port Marine Notices/Circulars are available at this link: <http://www.mpa.gov.sg>

PMN No.	Subject
75/2015	Works at Tuas Terminal Phase 1
88/2015	Mooring & unmooring of vessels at Banyan Basin, Jurong Island
107/2015	Soil investigation work off Changi East
109/2015	Upgrading works at Jurong Terminal Berth J10
111/2015	Removal of Floating sea barrier off Poyan Reservoir, West Johor Strait
112/2015	Reclamation work at Tuas View, off Temasek Fairway
114/2015	Soil investigation work at Tuas Bay
115/2015	Construction of jetties & deployment of acoustic Doppler current profiler (ADCP) At Tanah Merah Staging Ground
116/2015	Replacement of floating sea barrier at Serangoon Harbour
121/2015	Reclamation work at Pulau Tekong
122/2015	Construction of aviation park staging ground & Changi East Finger work Extension
123/2015	Mooring & unmooring of vessels off Pulau Tekong
124/2015	Reclamation work at western part of Tuas View Extension
128/2015	Soil investigation work off west of Tuas View, Johor Strait
130/2015	Construction of jetty & Pontoon at Pulau Ubin
133/2015	Dredging works at West Jurong Channel
135/2015	Mooring & unmooring of vessels off eastern part of Tuas View Extension
136/2015	Construction of pier at west of Tuas View Extension, West Johor Strait
138/2015	Laying of submarine cable off west of Tuas View Extension, Johor Strait
143/2015	Soil investigation work off west Tuas View, Johor Strait
146/2015	Reclamation and soil investigation works off Tuas
148/2015	Soil investigation off Changi East
PMC No.	Subject
PMC 12/2015	Implementation of Automatic Identification System – B (AIS-B) Transponder and Electronic Chart System (ECS) on power-driven harbour and pleasure craft.

*Source: Maritime and Port Authority of Singapore

III

NAVIGATIONAL INFORMATION

*(NM 6/2016) SINGAPOREAN PRINT-ON-DEMAND (POD) CHARTS

Print-On-Demand (POD) Charts are the most up-to-date paper nautical charts printed for navigational use. These nautical charts are produced in accordance with the International Hydrographic Organisation (IHO) chart specifications. These official nautical charts are continually updated to the latest Notices to Mariners before they are printed and sold to users.

These POD Charts include 200, 201, 202, 500, 501, 502 and 503.

BENEFITS TO OUR CUSTOMERS

Convenience

Customers need not make numerous hand corrections to the nautical charts before use. In addition the updated POD Charts are more accurate and reliable than offset printed charts with hand corrections.

Clarity

Clarity in the presentation of updated information as compared to lithographic printed charts, where in some cases there are several overlapping corrections over existing information.

Coverage

The POD Charts cover the Malacca and Singapore Straits, from One Fathom Bank to Horsburgh Lighthouse.

*Source: Maritime and Port Authority of Singapore

III
AMENDMENTS TO PUBLICATIONS

NIL

IV REPRINT OF RADIO NAVIGATIONAL WARNINGS

The following Radio Navigational Warnings have been shortlisted, as they would be of particular interest to mariners.

TT175

VESSELS IN EAST JOHOR STRAIT ARE ADVISED TO NAVIGATE WITH PARTICULAR ALERTNESS AND CAUTION WHEN NEAR THE PROJECT AREAS OFF PULAU TEKONG, CHANGI AND MALANG PAPAN AS SHALLOW WATER AREAS EXIST. VESSELS ARE REMINDED TO PROCEED AT A SAFE SPEED AND MAINTAIN A PROPER LOOK-OUT, PARTICULARLY FOR TUGS AND BARGES NAVIGATING NEAR THE PROJECT AREAS AND PASSENGER FERRIES CROSSING BETWEEN CHANGI AND PULAU TEKONG AND VICINITY OF PASIR GUDANG.

TT273

ALL VESSELS ARE ADVISED TO NAVIGATE WITH CAUTION, COMPLY WITH THE INTERNATIONAL COLLISION REGULATIONS, MAINTAIN VHF RADIO WATCH AND LISTEN TO TRAFFIC INFORMATION WHEN NAVIGATING IN THE SINGAPORE STRAIT AND PORT WATERS. MARINERS ARE ALSO ADVISED TO KEEP A GOOD LOOKOUT OF FREQUENT FERRIES CROSSING THE SINGAPORE STRAIT.

TT282

RACON DELTA Q(6)LFL.15S IN POSITION LAT 01° 03.60'N LONG 103° 38.85'E IS REPORTED UNLIT. ALL VESSELS ARE ADVISED TO NAVIGATE WITH CAUTION.

TT285 (AMENDED ON 28 DEC 2015 0112Z)

A SUNKEN YACHT IS LOCATED AT POSITION 01-17.83N 104-23.69E. ALL VESSELS ARE ADVISED TO NAVIGATE WITH PARTICULAR CAUTION.

TT292 (AMENDED ON 181630UTC DEC 2015)

A WRECK IS LOCATED AT 01-12.80N 103-54.89E IN THE EAST BOUND LANE OF SINGAPORE STRAIT. AN EMERGENCY WRECK MARKING BUOY WITH A LIGHT CHARACTERISTIC OF ALTERNATING OCCULTING BLUE YELLOW 3 SECONDS HAS BEEN INSTALLED AT POSITION 01-12.74N 103-54.78E IN THE EAST BOUND LANE OF THE SINGAPORE STRAIT. MARINERS ARE ADVISED NAVIGATE WITH CAUTION.

TT961

VESSELS INTENDING TO CROSS THE TRAFFIC SEPARATION SCHEME (TSS) OR PRECAUTIONARY AREAS IN THE SINGAPORE STRAIT DURING THE HOURS OF DARKNESS ARE RECOMMENDED TO DISPLAY THE NIGHT SIGNALS CONSISTING OF 3 ALL ROUND GREEN LIGHTS IN A VERTICAL LINE AS DETAILED IN MARITIME AND PORT AUTHORITY OF SINGAPORE'S PORT MARINE CIRCULAR, 02 OF 2011 DATED 30 MAY 2011.

ISSUED BY SINGAPORE PORT OPERATIONS CONTROL CENTRE (as at 27th December 2015)

V

EXTRACT OF ADMIRALTY NOTICES TO MARINERS FOR DUAL-BADGED CHARTS

These notices can also be accessed directly from UKHO Website:

<http://www.ukho.gov.uk/ProductsandServices/MaritimeSafety/Pages/NMPublic.aspx>

6124 SINGAPORE – Temasek Fairway SW – Buoyage.

Source: Maritime and Port Authority of Singapore

Chart 4030 [previous update 5187/15] WGS84 DATUM

Amend	designation of light-buoy to, TVE 2	1° 12′.580N., 103° 38′.210E.
	designation of light-buoy to, TVE 3	1° 12′.778N., 103° 37′.441E.
	designation of light-buoy to, TVE 4	1° 12′.926N., 103° 36′.865E.

Chart 4038 [previous update 5187/15] WGS84 DATUM

Amend	designation of light-buoy to, TVE 2	1° 12′.59N., 103° 38′.19E.
	designation of light-buoy to, TVE 3	1° 12′.78N., 103° 37′.44E.
	designation of light-buoy to, TVE 4	1° 12′.93N., 103° 36′.87E.

Chart 4039 [previous update 5594/15] WGS84 DATUM

Amend	designation of light-buoy to, TVE 2	1° 12′.59N., 103° 38′.19E.
	designation of light-buoy to, TVE 3	1° 12′.78N., 103° 37′.44E.
	designation of light-buoy to, TVE 4	1° 12′.93N., 103° 36′.87E.

Chart 4040 [previous update 55974/15] WGS84 DATUM

Amend	designation of light-buoy to, TVE 2	1° 12′.59N., 103° 38′.19E.
	designation of light-buoy to, TVE 3	1° 12′.78N., 103° 37′.44E.
	designation of light-buoy to, TVE 4	1° 12′.93N., 103° 36′.87E.

6129 SINGAPORE – Kuala Johor – Depths. Rock

Source: Maritime and Port Authority of Singapore

Chart 4043 [previous update 5578/15] WGS84 DATUM

Replace	depth, <i>12₄</i> , with + (12₉)	1° 23′.35N., 104° 00′.77E.
---------	---	----------------------------

Chart 4044 [previous update 5578/15] WGS84 DATUM

Replace	depth, <i>12₄</i> , with + (12₉)	1° 23′.35N., 104° 00′.77E.
---------	---	----------------------------

6546 SINGAPORE – Sembawang – Obstructions. Depth.

Source: Maritime and Port Authority of Singapore

Chart 4044 (Panel C, Sembawang) [previous update 6129/15] WGS84 DATUM

Insert	 Obstn	1° 28′.321N., 103° 49′.003E.
Replace	depth, <i>3₃</i> , with  Obstn	1° 28′.288N., 103° 48′.989E.

Updated to Admiralty Notices to Mariners Edition No. 53 of 2015 dated 31st December 2015.

SINGAPORE ENC DISTRIBUTORS

ENC DISTRIBUTOR	ADDRESS	TEL/FAX /EMAIL/WEBSITE
ChartWorld GmbH	Atlantic Haus, Zirkusweg 1 D-20359 Hamburg Germany	Tel: +49 40 853 58 6942 Fax: +49 40 853 58 6949 Email: sales@chartworld.com
ChartWorld Asia Pacific Pte Ltd.	Frontech Centre 07-01 15 Jalan Kilang Barat Singapore 159357	Tel: +65 6513 3500 Website: http://www.chartworld.com http://www.ecdis-as-a-service.com
DPM (Singapore) Pte Ltd	2 Boon Leat Terrace #05-02/03, Harbourside 2 Singapore 119844	Tel: +65 6270 4060 Fax: +65 6276 3858 Email: sales@dpmssingapore.com.sg Website: http://www.dpmssingapore.com.sg
Maritime Information Systems (MARIS)	52, Telok Blangah Road #01-06 Telok Blangah House Singapore 058809	Tel: +65 6276 1472 Fax: +65 6276 1473 Email: : support@maris.sg Website: http://www.maris.no
Maritime Information Systems AS (MARIS)	Danholmen 25, 3128 Notteroy Norway	Tel: +47 33 30 42 50 Fax: +47 33 30 42 51 Email: : sales@maris.no Website: http://www.maris.no
Motion Smith	15 Jalan Kilang Barat #08-01/05 Frontech Centre Singapore 159357	Tel: +65 6220 5098 Fax: +65 6225 4902 Email: sales@motsmith.com Website: http://www.motsmith.com
Transas Marine Pacific Pte Ltd	Cyber Centre 16/18 Jalan Kilang Barat Off Jalan Bukit Merah Singapore 159358	Tel: +65 6271 0200 Fax: +65 6271 7300 Email: navigation.asia@transas.com Website: http://www.transas.com
Japan Hydrographic Association (Electronic Charts Division)	Daiichi Sogo Bldg, 6F 1-6-6, Hanedakuko, Ota-ku Tokyo 144-0041, Japan	Tel: +81 3 5708 7093 Fax: +81 3 5708 7094 Email: shimizu-6kj@jha.jp Website: http://www.jha.or.jp/en/jha/
Jeppesen Norway AS	P.O Box 212 , N-4371 Egersund Norway	Tel: +47 51 46 4700 Fax: +47 51 46 4701 Email: license.marine@jeppesen.com Website : http://www.jeppesen.com/marine
PRIMAR STAVANGER	Lervigsveien 36, P.O Box 60 N-4001 Stavanger, Norway	Tel: +47 51 93 9500 Fax: +47 51 93 9501 Email: sales@ecc.no Website : http://www.primar.no
The United Kingdom Hydrographic Office	Admiralty Way, Taunton Somerset, TA1 2DN United Kingdom	Tel: +44 1823 33 7900 Fax: +44 1823 28 4077 Emails: ENCS.SalesReports@ukho.gov.uk Website: http://www.ukho.gov.uk

Chart Distributors for the Maritime and Port Authority of Singapore
Nautical Charts and Publications

Please approach any of the Chart Distributors to purchase the Singapore Nautical Charts and Publications.

CHART DISTRIBUTORS	ADDRESS	TEL/FAX/EMAIL/WEBSITE
Cornes (Singapore) Pte Ltd	10 Anson Road #23-06/6A International Plaza Singapore 079903	Tel: +65 6223 8320 Fax: +65 6223 8321 Email: sales9850@cspl.sg Website: http://www.cornes-charts.com
DPM (Singapore) Pte Ltd	2 Boon Leat Terrace #05-02/03, Harbourside 2 Singapore 119844	Tel: +65 6270 4060 Fax: +65 6276 3858 Email: sales@dpmsingapore.com.sg Website: http://www.dpmsingapore.com.sg
E.W. Liner Charts & Publications Pte Ltd	100, Pasir Panjang Road #05-10 Singapore 118518	Tel: +65 6323 0773 Fax: +65 6323 0775 Email: ewliner@singnet.com.sg Website: http://www.ewliner.com
Kelvin Hughes (Singapore) Pte Ltd	896 Dunearn Road #03-05 Sime Darby Centre Singapore 589472	Tel: +65 6545 9880 Fax: +65 6545 8892 Email: leslie.khoo@kelvinhughes.com.sg Website: http://www.kelvinhughes.com
Motion Smith	15 Jalan Kilang Barat #08-01/05 Frontech Centre Singapore 159357	Tel: +65 6220 5098 (After office hours: +65 8163 9993) Fax: +65 6225 4902 Email: sales@motsmith.com Website: http://www.motsmith.com

HYDROGRAPHIC NOTE - Instructions

1. Mariners are requested to notify the Chief Hydrographer, Maritime and Port Authority of Singapore, when new or suspected dangers to navigation are discovered, changes are observed in aids to navigation or where corrections to nautical publications may be necessary. Reports, which cannot be confirmed or are lacking in certain details should not be withheld.
2. Any ambiguities of time, positioning and depth should be stressed and any firm expectation of being able to check the information provided on a following voyage should be mentioned.
3. Mariners using satellite position fixing systems, eg. GPS, should provide details of equipment and datum used (where applicable). Where bearings (true or magnetic) are taken visually or by radar to fix a position, it should include more than two objects in order to provide a check on its accuracy. A position may also be defined by bearing and distance from a conspicuous object eg. beacon, lighthouse etc.
4. The note should include a tracing or a digital image of the chart used and the details should be clearly marked.
5. Echo sounders frequently register greater depths than the advertised maximum depth for the equipment, eg. a trace appearing at 50 metres may be in fact be 550 metres or even 1050 metres for equipment whose maximum depth is 500 metres. Erroneous depths caused by 2nd transmission error can usually be recognised by the following:
 - (a) the tracing being weaker than normal for the depth registered,
 - (b) the trace appearing to pass through the transmission line,
 - (c) the feathery nature of the trace.
6. Upon receipt of a hydrographic note, a Notice to Mariners may be issued. The sender's vessel or name is quoted as the source unless the same information is also received in foreign Notices to Mariners.
7. Reports of shoals, uncharted dangers and defects in aids to navigation may also be made to the appropriate Singapore Port Operations Control Centre on VHF Channels 10, 12, 14, 68 or 73.

HYDROGRAPHIC NOTE

To:

Chief Hydrographer
Maritime and Port Authority of Singapore
7B Keppel Road #20-00 Tanjong Pagar Complex
Singapore 089055

Tel : (65) 6325 2027
Fax : (65) 6226 1076
Email : hydrographic@mpa.gov.sg

Sender's Contact Details :

Date :

Name of Vessel :

Address of Sender :

Tel : Fax :

Email :

Nature of Observation :

General Location :

Subject :

Position : Lat. Long.

Charts Used :

Date & Time of Observation :

Details :

.....

.....

Attachment :

Equipment Used :

Type of Position Fixing : GPS / DGPS Others :

Type of Echo Sounder :

Name and Signature :

Ship's/Company's Stamp :