



SINGAPOREAN NOTICES TO MARINERS

SECTION	CONTENT	Page
I	Affected Charts & Publications	1
II	New Charts & Publications	3
	Notices to Mariners and Chart Corrections	6
	Temporary and Preliminary Notices	8
III	Navigational Information	9
	Amendments to Publications	11
IV	Reprint of Maritime Safety Information	15
V	Extract of Admiralty Notices to Mariners for Dual-Badged Charts	18

The monthly Notices to Mariners contain information required to keep charts and publications published by the Hydrographic Department, Maritime and Port Authority of Singapore up-to-date.

Mariners are requested to notify the Chief Hydrographer, Maritime and Port Authority of Singapore, immediately of the discovery of new or suspected dangers to navigation, observed changes to aids to navigation and ways Singaporean Charts and Publications can be improved. The Hydrographic Note on the back page should be used for this purpose.

Detailed information of charts and publications (coverage of charts, latest editions and distributors) are available on the Maritime and Port Authority Website: www.mpa.gov.sg

Chief Hydrographer of
The Maritime and Port Authority of Singapore
wishes all users
A HAPPY NEW YEAR

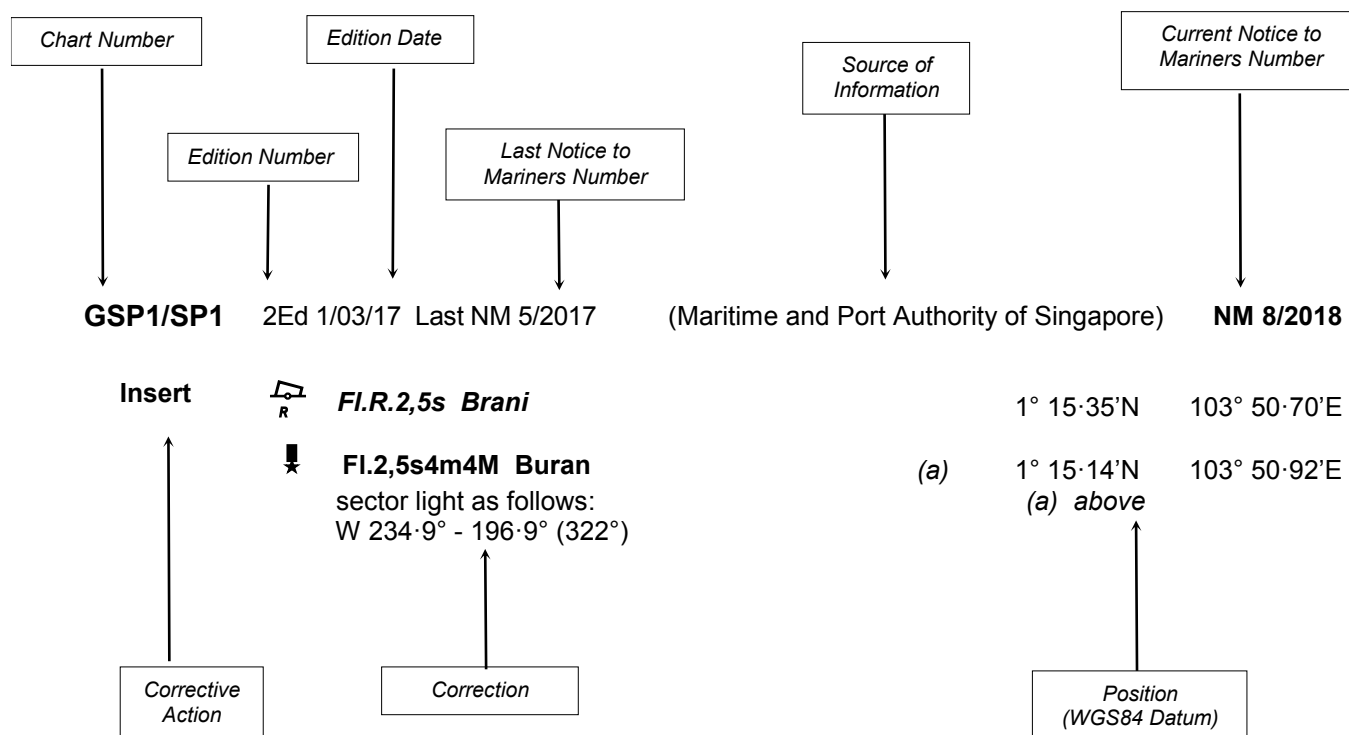
- [Singaporean Notice to Mariners](#)
- [Singaporean Charts](#)
- [Dual-Badged Charts](#)
- [Singapore ENC](#)
- [Malacca and Singapore Straits ENC](#)
- [Singapore Port Information](#)
- [Singapore Tide Tables](#)

Contact information:

Hydrographic Department
Maritime and Port Authority of Singapore
7B Keppel Road
#20-00 Tanjong Pagar Complex
Singapore 089055
Tel : (65) 6325 2027
Fax : (65) 6226 1076
Email : hydrographic@mpa.gov.sg

EXPLANATION OF FORMAT

The elements of a typical chart correction are explained below.



Notes:

- Notice to Mariners number followed by:
T indicates a Temporary Notice (eg. **NM 9T/2018**).
P indicates a Preliminary Notice (eg. **NM 10P/2018**).
- Bearings are true reckoned clockwise from 000° to 359°; those relating to lights are from seaward.
- Heights and elevations are above Mean High Water Springs.

I
AFFECTED CHARTS AND PUBLICATIONS

INDEX OF AFFECTED CHARTS

DESCRIPTION	NOTICE NO.	PAGE NO.
New Charts and Publications	-	3
Singapore Port Information 2018/2019	-	4, 5
Numerical Index to Notices to Mariners of 2017	*1	6
Singaporean Chart GSP1/SP1	*2, 3	7
Singaporean Chart 200	*4	7
Singaporean Chart 202	3	7
Singaporean Chart 501	3	7
Singaporean Chart 502	3, 5	7
Singaporean Chart 503	5	7
Temporary and Preliminary Notices	-	8
Singapore Port Marine Notices/Circulars	*6	9, 10
Amendments to Publications	*7, *8	11 to 14
Reprint of Maritime Safety Information	-	15 to 17
Extract of Admiralty Notices to Mariners for Dual-Badged Charts	-	18 to 20

*Source: Maritime and Port Authority of Singapore

I
AFFECTED CHARTS AND PUBLICATIONS

INDEX OF NOTICES

NOTICE NO.	DESCRIPTION	PAGE NO.
-	New Charts and Publications	3
-	Singapore Port Information 2018/2019	4, 5
*1	Numerical Index to Notices to Mariners of 2017	6
*2, 3	Singaporean Chart GSP1/SP1	7
*4	Singaporean Chart 200	7
3	Singaporean Chart 202	7
3	Singaporean Chart 501	7
3, 5	Singaporean Chart 502	7
5	Singaporean Chart 503	7
-	Temporary and Preliminary Notices	8
*6	Singapore Port Marine Notices/Circulars	9, 10
*7, *8	Amendments to Publications	11 to 14
-	Reprint of Maritime Safety Information	15 to 17
-	Extract of Admiralty Notices to Mariners for Dual-Badged Charts	18 to 20

*Source: Maritime and Port Authority of Singapore

II NEW CHARTS AND PUBLICATIONS

NEW EDITION SINGAPOREAN CHARTS TO BE PUBLISHED ON 15th JANUARY 2018

Chart Number	:	*GSP1
Title	:	Anchorage and Aids to Navigation
Coverage	:	Lat 01° 06·43' N 01° 29·40' N Long 103° 34·00' E 104° 08·10' E
Scale	:	1 : 65 000
Date Published	:	15 th January 2018
Size of Chart	:	973.2 x 651.3 mm
Description	:	This new edition includes new changes to aids to navigation, working areas, submarine cables, depth contours from the latest surveys covering west of Tuas View Reclamation, Temasek Fairway, Sinki Fairway, Sungei Pandan, West Keppel Fairway, Western Anchorages, Sudong Anchorages, Southern Fairway, Eastern Fairway, East Johor Strait and around Pulau Tekong.
		The existing chart of the same number published on 1 st March 2017 will be superseded.

*This chart is provided with a grid reference.

Chart Number	:	SP1
Title	:	Anchorage and Aids to Navigation
Coverage	:	Lat 01° 06·43' N 01° 29·40' N Long 103° 34·00' E 104° 08·10' E
Scale	:	1 : 65 000
Date Published	:	15 th January 2018
Size of Chart	:	973.2 x 651.3 mm
Description	:	This new edition includes new changes to aids to navigation, working areas, submarine cables, depth contours from the latest surveys covering west of Tuas View Reclamation, Temasek Fairway, Sinki Fairway, Sungei Pandan, West Keppel Fairway, Western Anchorages, Sudong Anchorages, Southern Fairway, Eastern Fairway, East Johor Strait and around Pulau Tekong.
		The existing chart of the same number published on 1 st March 2017 will be superseded.

II NEW CHARTS AND PUBLICATIONS

NEW EDITION SINGAPORE PORT INFORMATION 2018/2019 TO BE PUBLISHED ON 1st JANUARY 2018



Summary of Publication

This publication contains Port Information such as:

1. Routeing and Reporting Information

- * Straits of Malacca and Singapore - Routeing System
- * Mandatory Ship Reporting System in the Straits of Malacca and Singapore - STRAITREP
- * Rules for vessels navigating during hours of darkness through the Straits Of Malacca and Singapore (Recommendatory Measure)
- * Revised reporting procedures for notification and confirmation of a vessel's arrival in Singapore
- * Amendment to reporting procedures for vessels maneuvering in port
- * Guide to VHF communication in port and Singapore Strait
- * VHF radio telephone reporting procedures for vessels manoeuvring within the Traffic Information Area (TIA) in the East Johor Strait
- * Tall vessels' movements in port waters surrounding Changi Airport
- * 15-metre, 30-metre, 49-metre Height Restricted Areas in Port

2. Pilotage and Pilotage Exemption Information

- * Pilotage
- * Pilotage Exemption Course

3. Port Clearances and Reporting Procedures

- * Port health clearances procedures for vessels arriving Singapore
- * Port clearance formalities for arriving and departing vessels
- * Reporting of marine incidents in port
- * Dissemination of passage plan to shipmasters
- * Conduct of mandatory port limit courses
- * Facilities for the collection of garbage from ships in Singapore
- * Singapore Port Dues

4. Navigational Information

- * Anchorages and Fairways, Least depths of anchorages in the port
- * The use of canoes and kayaks within the port limits of Singapore
- * Depths of navigational channels, fairways, rivers and basins
- * Vertical and safe overhead clearance under bridges and aerial cableway

5. Information on Aids to Navigation

- * IALA Maritime Buoyage System
- * Characteristics of Aids to Navigation - List of beacons, buoys and lighthouses
- * Abbreviations for light characters and colours on light buoys and beacons
- * Semaphore tower at Pulau Satumu - Raffles Lighthouse

II NEW CHARTS AND PUBLICATIONS

6. Information on Wharves, Docks and Berths

7. Communication - International Code of Signals

8. Nautical Services and Products

- * Index and chart catalogue of Singaporean Charts
- * Index and chart catalogue of Dual Badged Charts
- * Maritime and Port Authority of Singapore - Nautical Charts and Publications Distributors
- * Singapore Electronic Navigational Charts Catalogue and Distributors
- * Feedback Form
- * Singapore DGPS Correction Service

It will be useful for the following users:

Mariners, shipping community, port users and other interested users.

Frequency/Year of Publication

Once every 2 years

This publication can be purchased at any of our MPA Nautical Chart and Publications Distributors:

Information on our MPA Nautical Chart and Publications Distributors: can be found on the following link:

<http://www.mpa.gov.sg/web/portal/home/media-centre/publications/singapore-port-information>

II

NOTICES TO MARINERS AND CHART CORRECTIONS


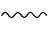
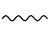
*(NM 1/2018) NUMERICAL INDEX TO NOTICES TO MARINERS OF 2017 (1 TO 127)

MONTH	NOTICES TO MARINERS NO.
JANUARY 2017	1 to 10
FEBRUARY 2017	11 to 17
MARCH 2017	18 to 27T
APRIL 2017	28 to 35
MAY 2017	36 to 42
JUNE 2017	43 to 60T
JULY 2017	61 to 69
AUGUST 2017	70 to 78
SEPTEMBER 2017	79 to 87T
OCTOBER 2017	88 to 96T
NOVEMBER 2017	97 to 119
DECEMBER 2017	120 to 127T

CHART NO.	PUBLISHED	YEAR	NOTICES TO MARINERS NO.
GSP1, SP1	2 Ed 1/03/17	2017	36-37-38-43-44-45-46-47-62-63-64-70-79-80-88-89-90-97-98-99-120-121
200	4 Ed 1/09/15	2017	03-12-28-39-48-65-71-81-100-101-122
201	6 Ed 15/09/17	2017	100-122
202	8 Ed 15/09/16	2017	04-06-18-19-29-57-59-82-91-94-99-103-123
500	8 Ed 15/09/17	2017	99-102
501	7 Ed 1/09/15	2017	05-13-36-37-44-45-46-49-64-79-99-102-121-124
502	7 Ed 1/09/15	2017	20-45-46-64-66-72-80-88-102-124
503	5 Ed 15/08/14	2017	04-18-29-57-59-91-94-103

II

NOTICES TO MARINERS AND CHART CORRECTIONS

GSP1/SP1	2 Ed 1/03/17 Last NM 121/2017	(Maritime and Port Authority of Singapore)	NM 2/2018
Delete	 <i>Wk</i>	1°14·97'N	103°38·94'E
		(Admiralty Notice No. 51/6004/17)	NM 3/2018
Amend	light-buoy to, <i>Fl.Y.6s</i>	1°11·07'N	103°54·60'E
<hr/>			
200	4 Ed 1/7/15 Last NM 122/2017	(Maritime and Port Authority of Singapore)	NM 4/2018
Insert	the accompanying block, centred on:	2°48·65'N	100°56·48'E
<hr/>			
202	8 Ed 15/9/17 Last NM 123/2017	(Admiralty Notice No. 51/6004/17)	NM 3/2018
Amend	light-buoy to, <i>Fl.Y.6s</i>	1°11·07'N	103°54·60'E
<hr/>			
501	7 Ed 1/5/15 Last NM 124/2017	(Admiralty Notice No. 51/6004/17)	NM 3/2018
Amend	light-buoy to, <i>Fl.Y.6s</i>	1°11·07'N	103°54·60'E
<hr/>			
502	7 Ed 1/5/15 Last NM 124/2017	(Admiralty Notice No. 51/6004/17)	NM 3/2018
Amend	light-buoy to, <i>Fl.Y.6s</i>	1°11·07'N	103°54·60'E
		(Indonesian Notice No. 47/754/17)	NM 5/2018
Insert	submarine cable,  , joining:	1°10·06'N	104°08·36'E
		(shore)	
		1°10·16'N	104°08·55'E
		1°12·21'N	104°13·25'E
		1°12·51'N	104°15·07'E
		1°12·56'N	104°15·42'E
		1°12·89'N	104°17·31'E
		(chart border)	
<hr/>			
503	5 Ed 15/8/14 Last NM 103/2017	(Indonesian Notice No. 47/754/17)	NM 5/2018
Insert	submarine cable,  , joining:	1°11·62'N	104°11·89'E
		(chart border)	
		1°12·21'N	104°13·25'E
		1°12·51'N	104°15·07'E
		1°12·56'N	104°15·42'E
		1°13·64'N	104°21·53'E
		1°15·60'N	104°26·46'E

II

TEMPORARY AND PRELIMINARY NOTICES

NIL

III NAVIGATIONAL INFORMATION

*(NM 6/2018)

SINGAPORE PORT MARINE NOTICES/CIRCULARS

The Port Marine Notices/Circulars shortlisted below would be of particular interest to Mariners. Details and complete list of Port Marine Notices/Circulars are available at this link:

<http://www.mpa.gov.sg/web/portal/home/port-of-singapore/circulars-and-notice>

PMN No.	Subject
103/2017	Construction of a breakwater off Tanah Merah Ferry Terminal
105/2017	Dredging work off western end of Jurong Island
106/2017	Reclamation works off Changi East
120/2017	Update on the implementation of the Ballast Water Management Convention (BWMC), 2004
127/2017	Construction of jetties off Jurong Island Causeway
128/2017	Construction of temporary jetty and roll on roll off (RORO) ramp in Tuas View Basin and Tuas Staging Ground
129/2017	Transfer of sand materials to stockpile at Tuas View Extension
130/2017	Caisson towing operations at Tuas Reclamation Area
131/2017	Reclamation work at Pulau Tekong
132/2017	Mooring and unmooring of vessels off Pulau Tekong
133/2017	A sentinel fish cage installed off Seletar Dam
135/2017	Reclamation work at western part of Tuas View Extension
137/2017	Dredging works at Temasek Fairway
142/2017	Reclamation work in Temasek Fairway, west of Jurong Island
147/2017	Reclamation work at Tuas View, off Temasek Fairway
148/2017	Mooring and unmooring of vessel at Tuas Finger One Project
155/2017	Construction of new landing pontoon and upgrading of existing West Coast Pier
163/2017	Works at Tuas Terminal Phase 1
164/2017	Laying of submarine cable off Changi East
165/2017	Installation of a sentinel fish cage off Tanjong Punggol
166/2017	Reclamation works at Ayer Merbau Basin
173/2017	Soil investigation works off Changi East
178/2017	Dredging works off Eastern Anchorage

III

NAVIGATIONAL INFORMATION

PMC No.	Subject
7/2017	Maritime Welfare Fee Concession
8/2017	Revision of inspection schedule for issuance of ship sanitation certificate
10/2017	Oil spill response & vessel rates in Singapore
12/2017	Concessionary port dues rates for (A) vessels carrying out repair works at MPA specified shipyards and (B) offshore support vessels without cargo operations at MPA specified offshore marine facilities
13/2017	Amendments to the Maritime and Port Authority of Singapore (PORT) Regulations
14/2017	New port dues incentives on the use of LNG as marine fuel in the port of Singapore
15/2017	Request for Banker's Guarantee or Insurance bond and General Interbank Recurring Order (GIRO)
16/2017	Persons authorized to supply water to ocean going vessels and harbour craft in port
17/2017	Withdrawal of 50% port dues concessions for MARPOL compliant double-hulled port limit bunker tankers from 1 Jan 2018
18/2017	Port dues concession for container vessels, bulk carriers and offshore support vessels
19/2017	Revision to the Pre-Arrival Notification (PAN)
21/2017	Sisters' Islands Marine Park
22/2017	Cashless payments with effect from 1 January 2018

*Source: Maritime and Port Authority of Singapore

III AMENDMENTS TO PUBLICATIONS

*(NM 7/2018) UPDATING OF PUBLICATION “SINGAPORE PORT INFORMATION 2018/2019”

CHARACTERISTICS OF AIDS TO NAVIGATION

1. Page 134

TUAS VIEW EXTENSION

Insert the following:

Name Of Beacon/Buoy	Position Lat. N Long. E	Structure, Colour & Shape	Light Characteristic	Owner
TSS2A Buoy	01°13·122' 103°36·463'	Yellow pillar with 'X' topmark	Fl.Y.4s	Fugro

2. Page 134

TEMASEK FAIRWAY

Insert the following:

Name Of Beacon/Buoy	Position Lat. N Long. E	Structure, Colour & Shape	Light Characteristic	Owner
TSS4 Buoy	01°16·712' 103°38·509'	Yellow pillar with 'X' topmark	Fl.Y.4s	Fugro
ADCP3TSS8 Buoy	01°14·385' 103°38·835'	Yellow pillar with 'X' topmark	Fl.Y.2s	Fugro
TSS3 Buoy	01°14·095' 103°40·097'	Yellow pillar with 'X' topmark	Fl.Y.4s	Fugro
ADCP4 Buoy	01°13·709' 103°40·158'	Yellow pillar with 'X' topmark	Fl.Y.2s	Fugro

3. Page 140

SELAT PANDAN

Insert the following:

Name Of Beacon/Buoy	Position Lat. N Long. E	Structure, Colour & Shape	Light Characteristic	Owner
TSS10 Buoy	01°15·074' 103°41·943'	Yellow pillar with 'X' topmark	Fl.Y.4s	Fugro
TSS11 Buoy	01°15·227' 103°42·381'	Yellow pillar with 'X' topmark	Fl.Y.4s	Fugro

III AMENDMENTS TO PUBLICATIONS

4. Page 144

SISTERS FAIRWAY

Insert the following:

Name Of Beacon/Buoy	Position Lat. N Long. E	Structure, Colour & Shape	Light Characteristic	Owner
SIS-01 Buoy	01°12.775' 103°50.220'	Yellow pillar with 'X' topmark	Fl.Y.2s	NParks
SIS-02 Buoy	01°12.694' 103°50.028'	Yellow pillar with 'X' topmark	Fl.Y.2s	NParks
SIS-03 Buoy	01°12.937' 103°49.821'	Yellow pillar with 'X' topmark	Fl.Y.2s	NParks
SIS-04 Buoy	01°13.049' 103°49.878'	Yellow pillar with 'X' topmark	Fl.Y.2s	NParks
SIS-05 Buoy	01°13.040' 103°50.013'	Yellow pillar with 'X' topmark	Fl.Y.2s	NParks
SIS-06 Buoy	01°12.924' 103°50.164'	Yellow pillar with 'X' topmark	Fl.Y.2s	NParks
NP-02 Mooring Buoy	01°12.714' 103°50.116'	Yellow can	Unlit	NParks
NP-03 Mooring Buoy	01°12.734' 103°50.004'	Yellow can	Unlit	NParks
NP-04 Mooring Buoy	01°12.772' 103°49.966'	Yellow can	Unlit	NParks
NP-05 Mooring Buoy	01°12.864' 103°49.896'	Yellow can	Unlit	NParks
NP-06 Mooring Buoy	01°12.972' 103°49.859'	Yellow can	Unlit	NParks
Mooring Buoy	01°12.742' 103°50.204'	Yellow barrel	Unlit	NParks

III AMENDMENTS TO PUBLICATIONS

5. Page 149

SERANGOON HARBOUR

Insert the following:

Name Of Beacon/Buoy	Position Lat. N Long. E	Structure, Colour & Shape	Light Characteristic	Owner
U-1 Mooring Buoy	01°23·990' 103°58·218'	Yellow can	Unlit	MPA

6. Page 152

CHANGI EAST

Delete the following:

Name Of Beacon/Buoy	Position Lat. N Long. E	Structure, Colour & Shape	Light Characteristic	Owner
CEF03 Buoy	01°20·843' 104°02·821'	Yellow pillar with 'X' topmark	Fl.Y.4s	Santarli

WHARVES AND BERTHS

7. Page 163

17 JURONG ISLAND - BANYAN BASIN (VOPAK TERMINALS SINGAPORE PTE LTD) (1°15·9'N, 103°41·0'E)

Amend the following:

Berth	Length of Berth Box	Max LOA	Depth Alongside (Year Surveyed)	Controlling Depth In Approaches
OBV 1	291m	260m	16·5m (2006)	16·2m
OBV 2	291m	260m	16·8m (2008)	16·2m
OBV 3	181·5m	170m	11·5m (2008)	16·2m
OBV 4	146m	185m	15·8m (2008)	16·2m
OBV 5	260m	235m	15·2m (2008)	16·2m
OBV 6	260m	235m	16·5m (2012)	16·2m
OBV 7	260m	235m	16·3m (2012)	16·2m

*Source: Maritime and Port Authority of Singapore

III
AMENDMENTS TO PUBLICATIONS

***(NM 8/2018) UPDATING OF PUBLICATION “SINGAPORE TIDE TABLES 2018 ”**

1. Page 156

Amend the following:

OCTOBER 2018

HOURLY TIDAL STREAMS
POSITIVE(+) DIRECTION 110° NEGATIVE (-) DIRECTION 290°
RATES IN KNOTS

2. Page 188

Amend the following:

JUNE 2018

HOURLY TIDAL STREAMS
POSITIVE(+) DIRECTION 067° NEGATIVE (-) DIRECTION 247°
RATES IN KNOTS

*Source: Maritime and Port Authority of Singapore

IV

REPRINT OF MARITIME SAFETY INFORMATION

The following Maritime Safety Information have been shortlisted, as they would be of particular interest to mariners.

TT175

VESSELS IN EAST JOHOR STRAIT ARE ADVISED TO NAVIGATE WITH PARTICULAR ALERTNESS AND CAUTION WHEN NEAR PROJECT AREAS OFF PULAU TEKONG, CHANGI AND MALANG PAPAN AS SHALLOW WATER AREA EXIST. VESSELS ARE REMINDED TO PROCEED AT SAFE SPEED AND MAINTAIN A PROPER LOOKOUT, PARTICULARLY FOR TUGS AND BARGES NAVIGATING NEAR THE PROJECT AREAS AND PASSENGER FERRIES CROSSING BETWEEN CHANGI AND PULAU TEKONG AND VICINITY OF PASIR GUDANG.

TT273

ALL VESSELS ARE ADVISED TO NAVIGATE WITH CAUTION, COMPLY WITH THE INTERNATIONAL COLLISION REGULATIONS AND MAINTAIN VHF RADIO WATCH AND LISTEN TO TRAFFIC INFORMATION WHEN NAVIGATING IN THE SINGAPORE STRAIT AND PORT WATERS. MARINERS ARE ALSO ADVISED TO KEEP A GOOD LOOKOUT OF FREQUENT FERRIES CROSSING THE SINGAPORE STRAIT.

TT363

MARINERS ARE REMINDED NOT TO ANCHOR IN ALL AREAS IN THE TSS OF THE STRAITS OF MALACCA AND SINGAPORE AS WELL AS BETWEEN THE LANDWARD LIMITS OF THE TSS AND APPROACHES TO THE PORTS. VESSELS ENTERING ANY PORT IN ANY LITTORAL STATES ARE TO ANCHOR IN THE ANCHORAGES DESIGNATED BY THE RESPECTIVE LITTORAL STATES ONLY.

TT399

VESSELS ARRIVING TO SINGAPORE OR TRANSITING THROUGH THE STRAIT ARE RECOMMENDED TO UPDATE THEIR DESTINATION ACCURATELY IN THE AIS TO ENHANCE SITUATION AWARENESS FOR OTHER TRAFFIC IN THE VICINITY, EXAMPLE TO INDICATE SG-PEBGB.

TT418

WEST BOUND DEEP DRAFT VESSELS AND VLCCS ARE REMINDED TO COMPLY WITH THE RULES OF VESSELS NAVIGATING THROUGH THE STRAITS OF MALACCA AND SINGAPORE (SOMS). THEY SHALL ALLOW FOR AN UKC OF AT LEAST 3.5 METRES AT ALL TIMES DURING THE ENTIRE PASSAGE THROUGH THE SOMS AND AS FAR AS IT IS SAFE & PRACTICABLE, PROCEED AT A SPEED OF NOT MORE THAN 12 KTS OVER THE GROUND IN THE WESTBOUND LANE OF THE SINGAPORE STRAIT (BETWEEN SOUTH OF ST JOHN'S ISLAND & RAFFLES LIGHTHOUSE.)

THEY ARE ADVISED TO BROADCAST, 8 HOURS BEFORE ENTERING THE TSS, NAVIGATIONAL INFORMATION GIVING NAME, DEADWEIGHT, DRAUGHT, SPEED AND TIMES OF PASSING HORSBURGH LIGHTHOUSE AND RAFFLES LIGHTHOUSE.

TT426

ALL MARINERS ARE REMINDED TO NAVIGATE WITH CAUTION IN THE PRECAUTIONARY AREAS OF THE SINGAPORE STRAIT TSS AND TO MAINTAIN A GOOD LOOKOUT FOR CROSSING TRAFFIC. VESSEL INTENDING TO CROSS THE TSS SHALL DO SO ONLY WHEN IT IS SAFE AND SHALL AT ALL TIMES COMPLY WITH THE COLLISION REGULATIONS.

IV

REPRINT OF MARITIME SAFETY INFORMATION

TT427 (AMENDED ON 20 OCT 2017 0142Z)

SALVAGE OPS FOR SUNKEN VSL CAI JUN 3 LOCATED AT LAT 1°25'915"N LONG 104°27'389"E IN THE APPROACHES TO THE SINGAPORE STRAIT AT HORSBURGH LT HSE AREA.

A TEMPORARY WORKING AREA FOR THE SALVAGE OPS OF 500 METRES RADIUS CENTERED ON THE SUNKEN VESSEL HAS BEEN ESTABLISHED.

A CRANE BARGE IS HELD IN POSN OVER THE WRECK BY 4 ANCHORS MARKED BY ANCHOR BUOYS AT THE FOLLOWING POSNS:

BUOY	LAT (N)	LONG(E)
A	01° 25'988	104° 27'078
B	01° 26'207	104° 27'500
C	01° 25'938	104° 27'488
D	01° 25'776	104° 27'208

WORK VSLS INVOLVED IN THE SALVAGE OPS ARE AS FOLLOWS:

1. CRANE BARGE HONG BANG 6 (3FFP8)
2. TUG TROPICAL OCEAN (9V5467)
3. TUG EWAN ADVENTURE (9V7347)

THE OPS WILL TAKE EFFECT FROM 28 SEP 2017 UNTIL 31 DEC 2017, 24 HOURS DAILY. AN UNAUTHORISED AND INAPPROPRIATELY POSITIONED ISOLATED DANGER BUOY WITH LIGHT CHARACTERISTICS FL(2)10S WHICH WAS LOCATED AT POSN LAT 01° 25'817"N LONG 104° 27'450"E HAS BEEN REMOVED.

MARINERS ARE ADVISED TO NAVIGATE WITH CAUTION AND GIVE A WIDE BERTH.

TT430

THE FOLLOWING ATONS' AIS/RACONS ARE TEMPORARILY REMOVED FOR UPGRADING.

ATONS WITH AIS TEMPORARILY REMOVED FOR UPGRADING:

1. ANGLER BUOY
2. BANYAN BEACON
3. MALANG PAPAN BEACON
4. RASU BUOY
5. RAFFLES LIGHTHOUSE
6. SAKIJANG BEACON
7. SELEGI BEACON
8. SINKI BEACON

ATONS WITH RACON TEMPORARILY REMOVED FOR UPGRADING:

1. CYRENE BEACON
2. HORSBURGH LIGHTHOUSE
3. RAFFLES LIGHTHOUSE
4. SEREBUT BEACON
5. SULTAN SHOAL LIGHTHOUSE

MARINERS ARE ADVISED TO NAVIGATE WITH CAUTION.

TT437

ALL VESSELS IN SEMBAWANG WHARVES LOCATION ARE TO CHECK YOUR 121.5MHZ ALERT SYSTEM, PLEASE STOP EMIITING YOUR 121.5MHZ DISTRESS ALERT IF YOU ARE NOT IN DISTRESS TO PREVENT INTERFERENCE TO AIRSPACE FREQUENCY.

TT439

EASTERN BUOY FL.R.5S IN POSN LAT 1°17'863"N 104°05'896"E IS MISSING. VESSELS ADVISED TO NAVIGATE WITH CAUTION.

TT440

A NUMBER OF UNKNOWN VESSELS ARE OBSERVED ANCHORED IN THE TSS/PRECAUTIONARY AREA SOUTH OF T RAMUNIA AT APPROXIMATE POSITION 1°17'91"N 104°14'92"E. ALL VESSELS ARE ADVISED TO KEEP A GOOD LOOKOUT AND PROCEED WITH CAUTION WHEN PASSOMG THIS AREA IN THE SINGAPORE STRAIT.

IV

REPRINT OF MARITIME SAFETY INFORMATION

TT961

VESSELS INTENDING TO CROSS THE TRAFFIC SEPERATION SCHEME (TSS) OR PRECAUTIONARY AREAS IN THE SINGAPORE STRAIT DURING THE HOURS OF DARKNESS ARE RECOMMENDED TO DISPLAY THE NIGHT SIGNALS CONSISTING OF 3 ALL ROUND GREEN LIGHTS IN A VERTICAL LINE AS DETAILED IN THE MARITIME AND PORT AUTHORITY OF SINGAPORE'S PORT MARINE CIRCULAR, 04 OF 2013 DATED 7 MAY 2013.

SR123

SEA ROBBERIES ARE REPORTED IN THE SINGAPORE STRAIT. ALL VESSELS ARE REMINDED TO MAINTAIN A PROPER LOOK-OUT AND REPORT ANY SUSPICIOUS CRAFT TO VTIS SINGAPORE.

ISSUED BY SINGAPORE PORT OPERATIONS CONTROL CENTRE (as at 24th December 2017)

V
EXTRACT OF ADMIRALTY NOTICES TO MARINERS
FOR DUAL-BADGED CHARTS

These notices can also be accessed directly from UKHO Website:

<https://www.admiralty.co.uk/maritime-safety-information/admiralty-notices-to-mariners>

5724 SINGAPORE - Changi East SW and Changi NW - Depth. Light-beacon.

Source: Maritime and Port Authority of Singapore

Chart 4041 [previous update 5071/17] WGS84 DATUM

Insert	depth, <i>19₄</i>	1°18·26'N	103°59·88'E
--------	------------------------------	-----------	-------------

Chart 4043 [previous update 5103/17] WGS84 DATUM

Insert	depth, <i>19₄</i>	1°18·26'N	103°59·88'E
--------	------------------------------	-----------	-------------

Amend	light-beacon to, Fl.G2s2m3M	1°23·57'N	103°59·12'E
-------	------------------------------------	-----------	-------------

Chart 4044 (Panel A, Serangoon Harbour) [previous update 5071/17] WGS84 DATUM

Amend	light-beacon to, Fl.G2s2m3M	1°23·574'N	103°59·123'E
-------	------------------------------------	------------	--------------

Chart 4044 [previous update 5071/17] WGS84 DATUM

Amend	light-beacon to, Fl.G2s2m3M	1°23·57'N	103°59·12'E
-------	------------------------------------	-----------	-------------

5728 SINGAPORE - Sinki Fairway, West Keppel Fairway and Cruise Bay - NM Block. Dredged depth. Submarine pipeline. Legend.

Source: Maritime and Port Authority of Singapore

Note: Chart 4040 will be updated by Notices to Mariners.

Chart 4032 [previous update 5112/17] WGS84 DATUM

Insert	the accompanying block, centred on:	1°15·5'N	103°43·7'E
--------	-------------------------------------	----------	------------

Chart 4034 [previous update 5112/17] WGS84 DATUM

Insert	the accompanying block, centred on:	1°15·5'N	103°43·7'E
--------	-------------------------------------	----------	------------

Amend	dredged depth to, 18·0m (2017) , centred on:	1°15·634'N	103°46·737'E
-------	---	------------	--------------

Chart 4035 [previous update New Edition 06/04/2017] WGS84 DATUM

Amend	dredged depth to, 18·0m (2017) , centred on:	1°15·634'N	103°46·737'E
-------	---	------------	--------------

Delete	submarine pipeline, ---- , and associated legend, (<i>buried</i>), joining:	1°15·575'N	103°48·616'E
	(shore)	1°15·588'N	103°48·607'E

V
EXTRACT OF ADMIRALTY NOTICES TO MARINERS
FOR DUAL-BADGED CHARTS

5743(P) SINGAPORE - Sinki Fairway - Jetty. Berth. Dredged depth. Dredged area.

Source: Maritime and Port Authority of Singapore

1.			
	Update	Feature	Position
	Insert	jetty, single firm line, joining:	1°15-69'N 103°43-60'E (shore)
			1°15-66'N 103°43-62'E
			1°15-65'N 103°43-60'E
			1°15-66'N 103°43-59'E
			1°15-67'N 103°43-61'E
			1°15-68'N 103°43-60'E (shore)
		limit of dredged area, pecked line, joining:	(a) 1°15-69'N 103°43-68'E
			(b) 1°15-66'N 103°43-69'E
			(c) 1°15-60'N 103°43-55'E
			(d) 1°15-62'N 103°43-54'E
		berth number, 6	1°15-64'N 103°43-61'E
		dredged depth, 14.2m, within:	(a)-(d) above

Chart affected - 8176

5829 SINGAPORE - Selat Pandan - NM Block.

Chart 4040 [previous update 5112/17] WGS84 DATUM

Insert	the accompanying block, centred on:	1°15-4'N	103°43-7'E
--------	-------------------------------------	----------	------------

5908(P) SINGAPORE - Sinki Fairway to Southern Fairway - Note.

Source: Maritime and Port Authority of Singapore

1. Updated Section: BERTH INFORMATION.
 Replace:

Sakra Basin - Petrochemical Corporation of Singapore (Pte) Ltd (1°15-72'N 103°42-89'E)

- The entire basin lies within the Jurong Island Prohibited Area.
- The Petrochemical Corporation of Singapore (Pte) Ltd operates all the berths, which are situated along the NNE shore of the basin. From the entrance inwards: Barge Wharf and No 1 are unloading berths and Nos 3-5 are for liquids. The deepest is No 4 with a depth alongside of 12.1m (2014). There are no berths on the SSW side.
- A berth comprising three dolphins, is situated at the inward end of the basin; least depth alongside is 5.9m (2010).

With:

Sakra Basin - Petrochemical Corporation of Singapore (Pte) Ltd (1°15-72'N 103°42-89'E)

- The entire basin lies within the Jurong Island Prohibited Area.
- * The Petrochemical Corporation of Singapore (Pte) Ltd operates all the berths, Berths 1-5 are situated along the NNE side of the basin and Berth No 6 lies outside the basin facing the Selat Pandan. From the entrance inwards: Barge Wharf and No 1 are unloading berths and Nos 3-5 are for liquids. The deepest is No 6 with a depth alongside of 14.2m (2017). There are no berths on the SSW side.
- A berth comprising three dolphins, is situated at the inward end of the basin; least depth alongside is 5.9m (2010).
- * Indicates new or revised entry.

Chart affected - 8176

V
EXTRACT OF ADMIRALTY NOTICES TO MARINERS
FOR DUAL-BADGED CHARTS

6004 INDONESIA - Sumatera - Batu Berhanti NW and E - Depths. Buoy.

Source: Indonesian Chart 44

Note: This update is included in New Edition 3833, published 21 December 2017.

Chart 4041 [previous update 5724/17] WGS84 DATUM


Amend	light-buoy to, Fl.Y.6s	1°11·07'N	103°54·60'E
Replace	depth, <i>30_l</i> , with depth, <i>26_s</i> , enclosed by 30m contour	1°11·57'N	103°52·54'E

6005 INDONESIA - Sumatera - Pulau Batam - Submarine Cable.

Source: Indonesian Notice 47/754/17

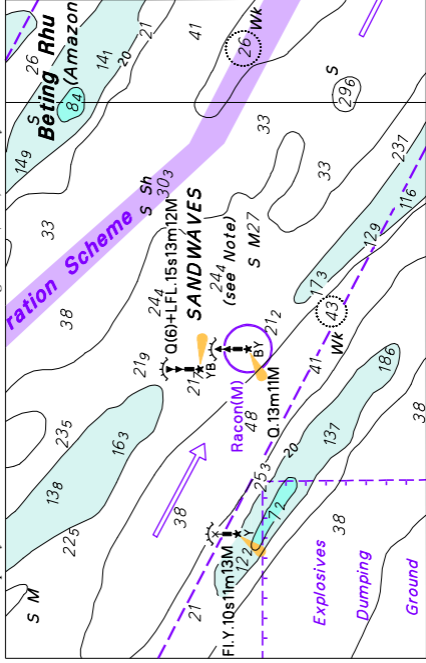
Note: This update is included in New Edition 3831 published 21 December 2017.

Chart 4042 [previous update 5103/17] WGS84 DATUM

Insert	submarine cable,  , joining:	1°10·06'N	104°08·34'E
	(shore)		
		1°12·21'N	104°13·25'E
		1°12·56'N	104°15·42'E
		1°13·28'N	104°19·50'E
	(E border)		

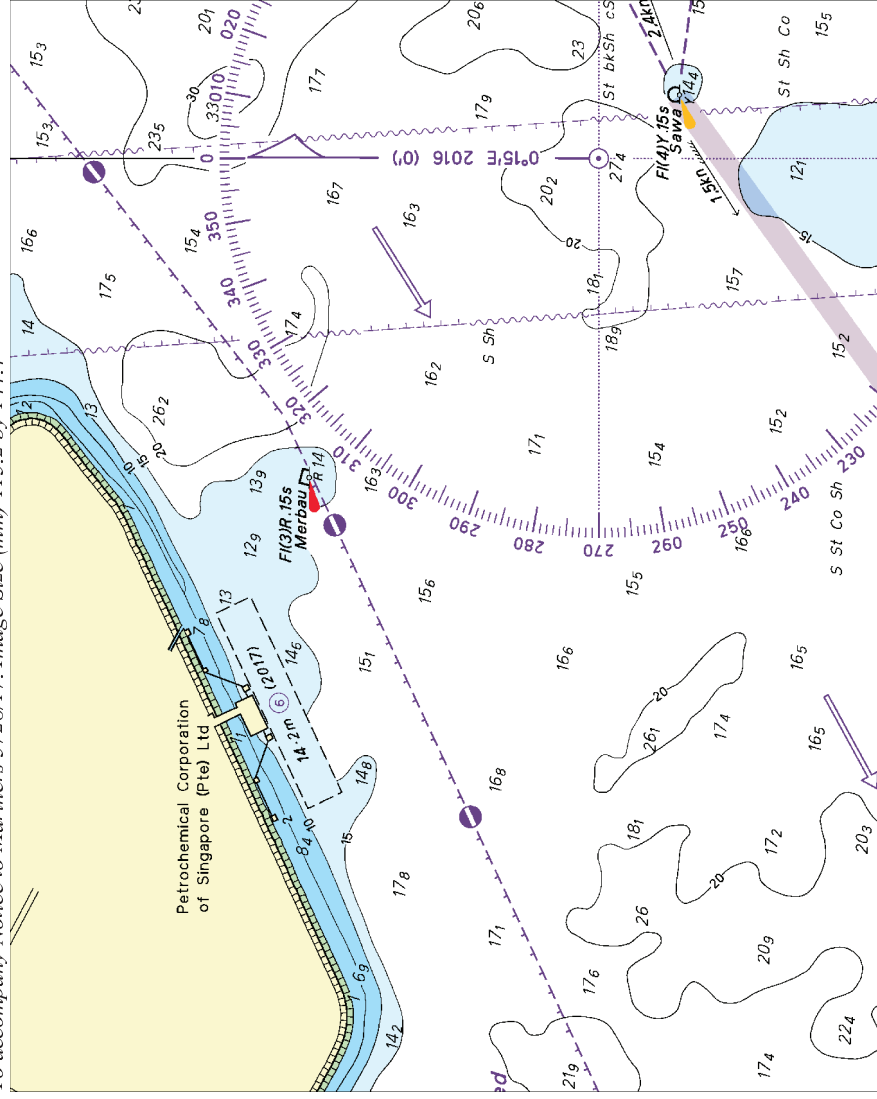
Updated to Admiralty Notices to Mariners No. 52 of 2017 dated 28th December 2017

To accompany Notice To Mariners 4/18. Image size (mm) 87.1 by 55.5



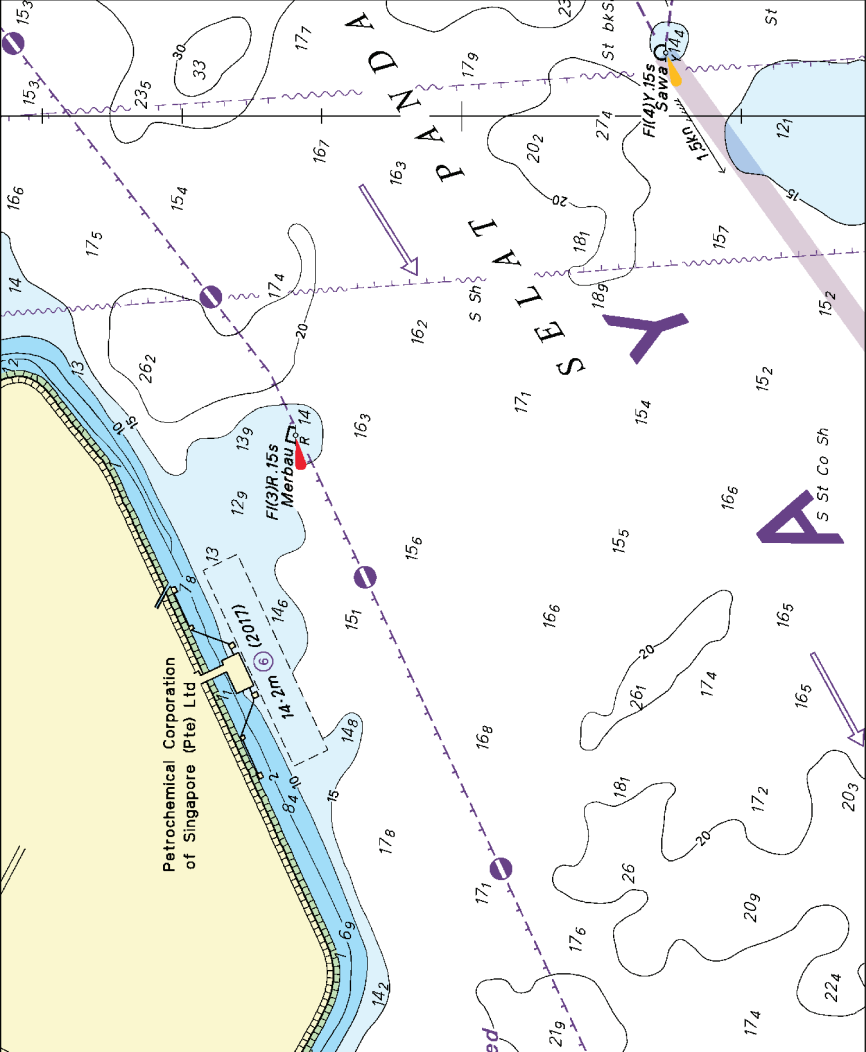
Block for Chart No 200

To accompany Notice to Mariners 5728/17. Image Size (mm) 115.2 by 144.4



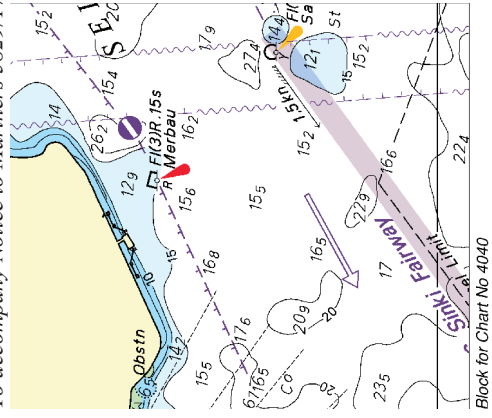
Block for Chart No 4034

To accompany Notice to Mariners 5728/17. Image Size (mm) 114.4 by 139.2



Block for Chart No 4032

To accompany Notice to Mariners 5829/17. Image Size (mm) 60.6 by 53.6



HYDROGRAPHIC NOTE - Instructions

1. Mariners are requested to notify the Chief Hydrographer, Maritime and Port Authority of Singapore, when new or suspected dangers to navigation are discovered, changes are observed in aids to navigation or where corrections to nautical publications may be necessary. Reports, which cannot be confirmed or are lacking in certain details should not be withheld.
2. Any ambiguities of time, positioning and depth should be stressed and any firm expectation of being able to check the information provided on a following voyage should be mentioned.
3. Mariners using satellite position fixing systems, eg. GPS, should provide details of equipment and datum used (where applicable). Where bearings (true or magnetic) are taken visually or by radar to fix a position, it should include more than two objects in order to provide a check on its accuracy. A position may also be defined by bearing and distance from a conspicuous object eg. beacon, lighthouse etc.
4. The note should include a tracing or a digital image of the chart used and the details should be clearly marked.
5. Echo sounders frequently register greater depths than the advertised maximum depth for the equipment, eg. a trace appearing at 50 metres may be in fact be 550 metres or even 1050 metres for equipment whose maximum depth is 500 metres. Erroneous depths caused by 2nd transmission error can usually be recognised by the following:
 - (a) the tracing being weaker than normal for the depth registered,
 - (b) the trace appearing to pass through the transmission line,
 - (c) the feathery nature of the trace.
6. Upon receipt of a hydrographic note, a Notice to Mariners may be issued. The sender's vessel or name is quoted as the source unless the same information is also received in foreign Notices to Mariners.
7. Reports of shoals, uncharted dangers and defects in aids to navigation may also be made to the appropriate Singapore Port Operations Control Centre on VHF Channels 10, 12, 14, 68 or 73.

HYDROGRAPHIC NOTE

To:

Chief Hydrographer
Maritime and Port Authority of Singapore
7B Keppel Road #20-00 Tanjong Pagar Complex
Singapore 089055

Tel : (65) 6325 2027
Fax : (65) 6226 1076
Email : hydrographic@mpa.gov.sg

Sender's Contact Details :

Date :

Name of Vessel :

Address of Sender :

Tel : Fax :

Email :

Nature of Observation :

General Location :

Subject :

Position : Lat. Long.

Charts Used :

Date & Time of Observation :

Details :
.....
.....

Attachment :

Equipment Used :

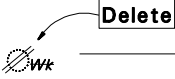
Type of Position Fixing : GPS / DGPS Others :

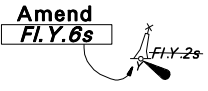
Type of Echo Sounder :

Name and Signature :

Ship's/Company's Stamp :

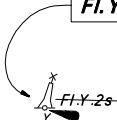
NOTICES TO MARINERS TRACINGS

<div>1°15'N</div> <div>  </div>		<div>103°40'E</div>				
CORRECTION NO.	SNM EDN NO.	LAST CORRNO NO.	CHART NO.	Location on Chart		
2	1/2018	121/2017	GSP1/SP1	X		

<div> <div>Amend</div> <div>Fl.Y.6s</div> <div>  </div> </div> <div>1°10'N</div>		<div>103°55'E</div>				
CORRECTION NO.	SNM EDN NO.	LAST CORRNO NO.	CHART NO.	Location on Chart		
3	1/2018	2/2018	GSP1/SP1		X	

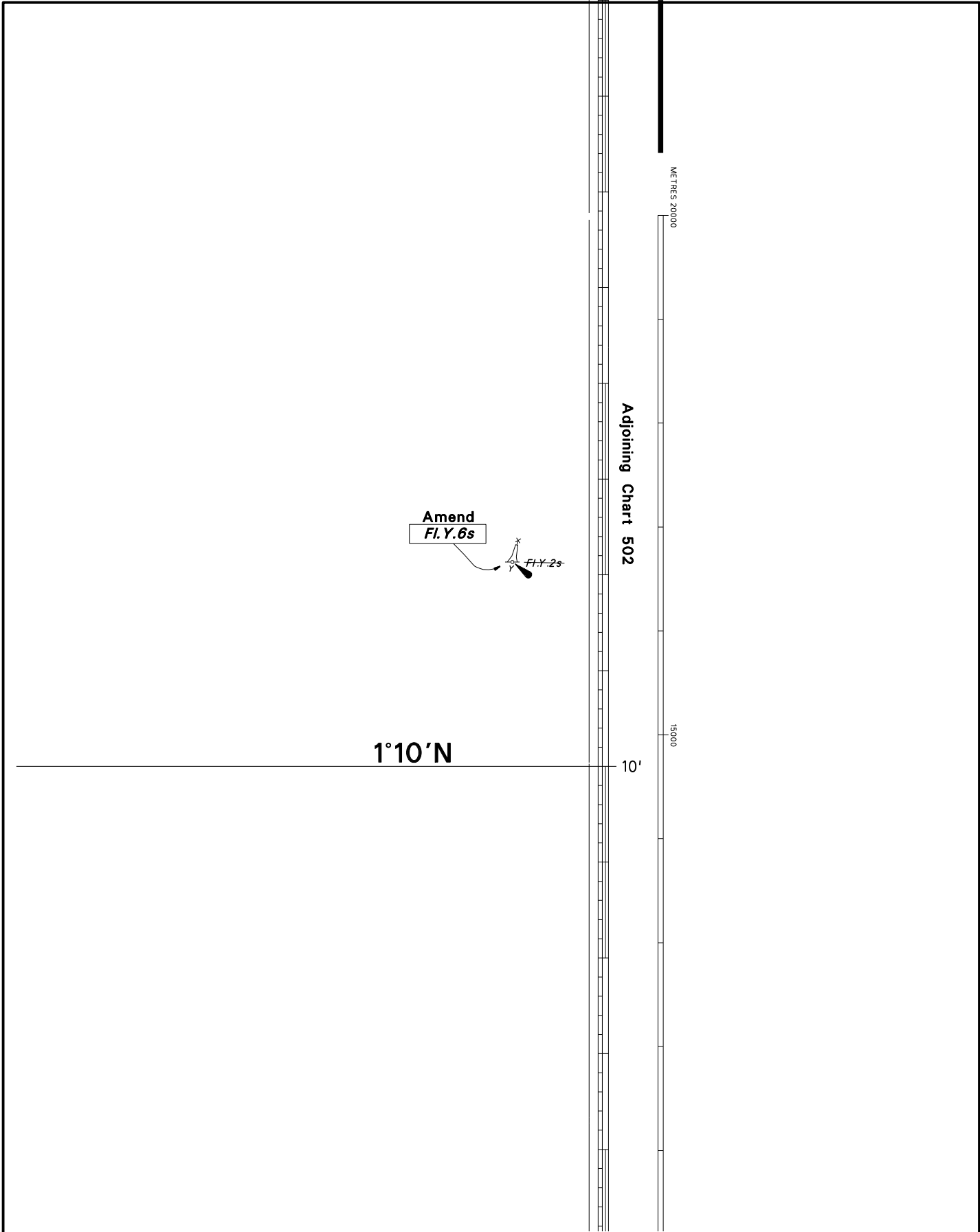
Caution: some computer printers might distort the tracings.
Users are advised to check and, if necessary, adjust settings on the printer

NOTICES TO MARINERS TRACINGS

				1°20'N			
				<div>Amend Fl. Y. 6s</div> <div></div>		104°00'E	
				1°00'N			
CORRECTION NO.		SNM EDN NO.		LAST CORR N O.		CHART NO.	
3		1/2018		123/2017		202	
						Location on Chart	
						X	

Caution: some computer printers might distort the tracings.
Users are advised to check and, if necessary, adjust settings on the printer

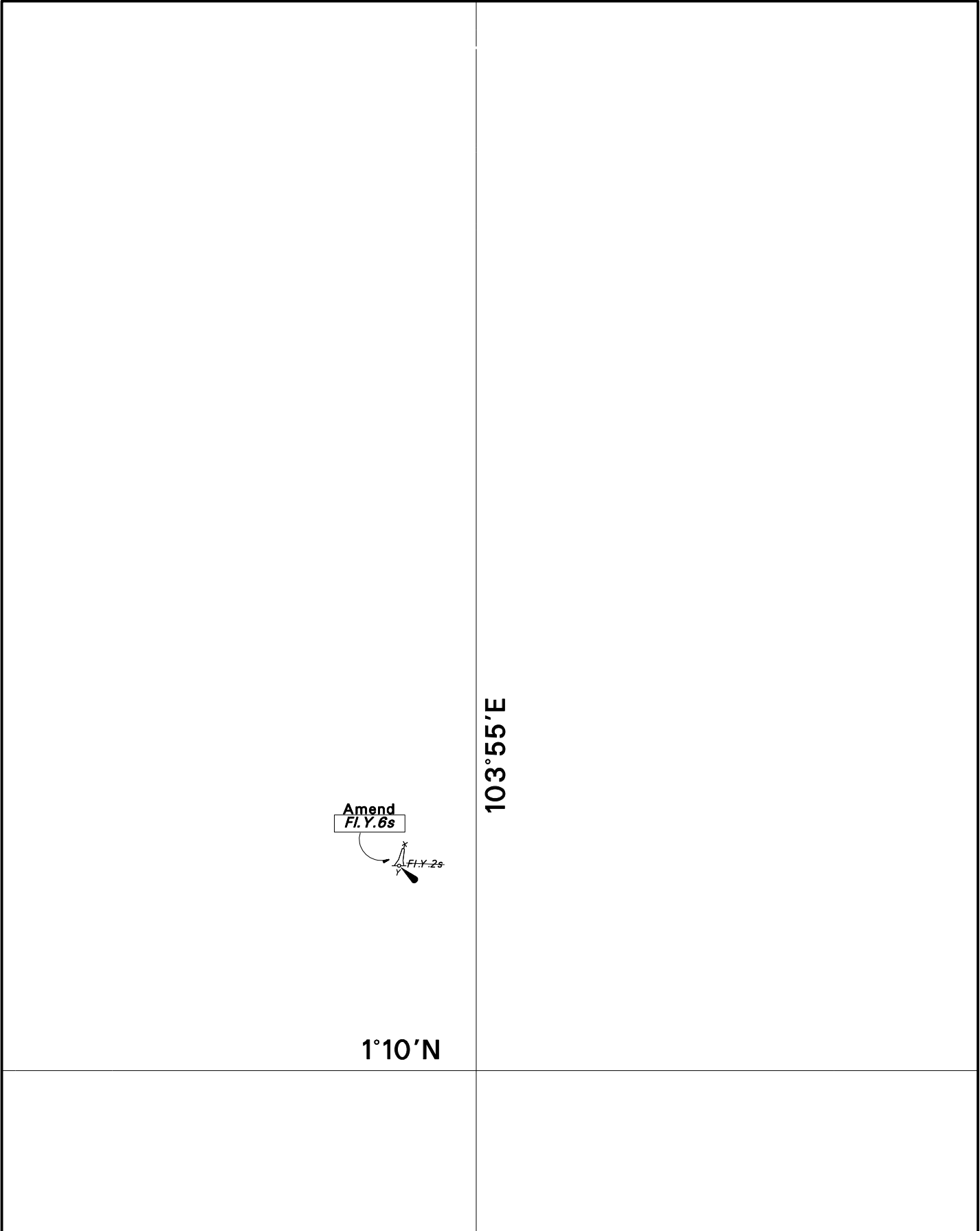
NOTICES TO MARINERS TRACINGS



CORRECTION NO.	SNM EDN NO.	LAST CORR N O.	CHART NO.	Location on Chart		
3	1/2018	124/2017	501			X

Caution: some computer printers might distort the tracings.
Users are advised to check and, if necessary, adjust settings on the printer

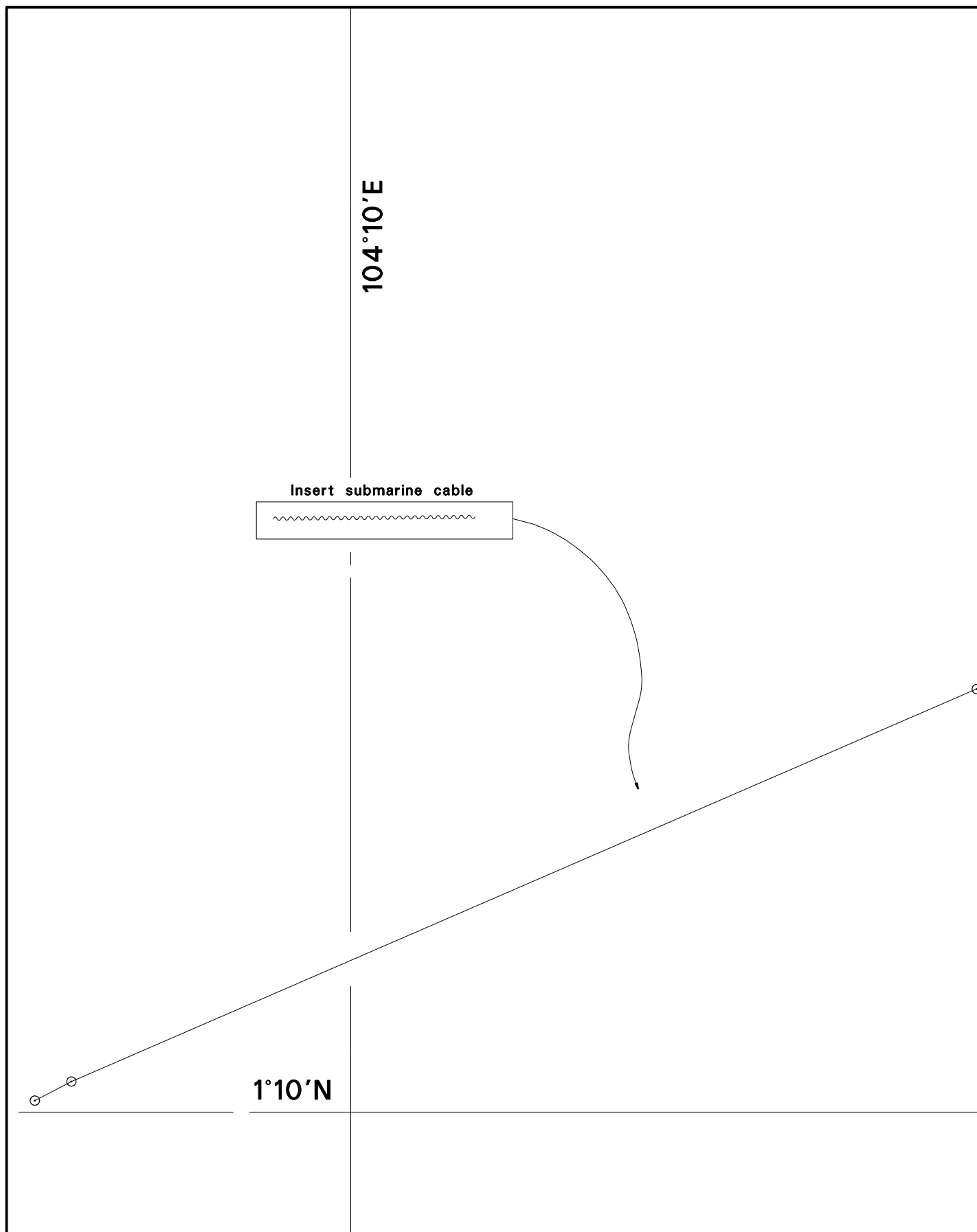
NOTICES TO MARINERS TRACINGS



CORRECTION NO.	SNM EDN NO.	LAST CORR N NO.	CHART NO.	Location on Chart		
3	1/2018	124/2017	502	X		

Caution: some computer printers might distort the tracings.
Users are advised to check and, if necessary, adjust settings on the printer

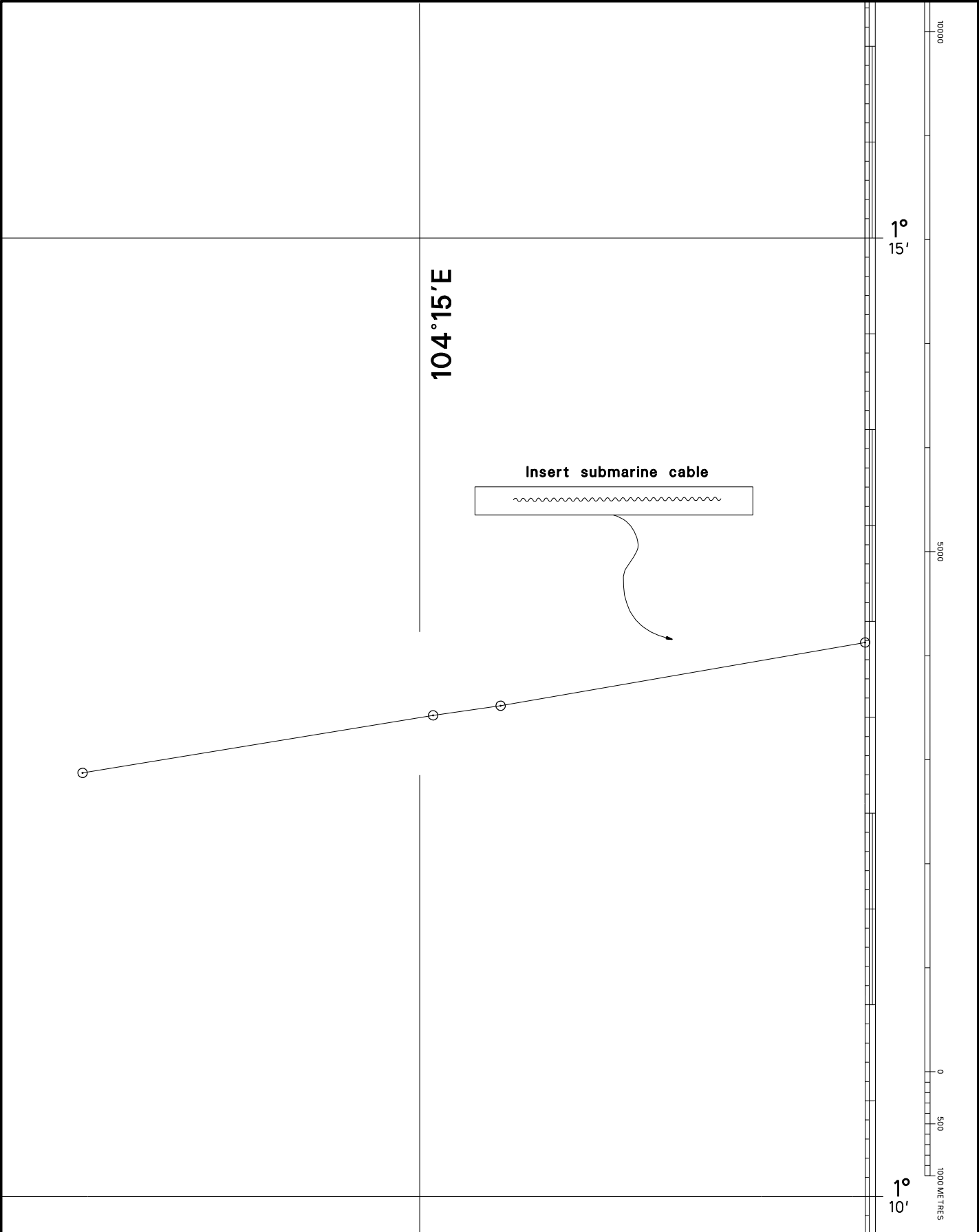
NOTICES TO MARINERS TRACINGS



CORRECTION NO.	SNM EDN NO.	LAST CORR N NO.	CHART NO.	Location on Chart		
5 (Sheet 1)	1/2018	3/2018	502			X

Caution: some computer printers might distort the tracings.
Users are advised to check and, if necessary, adjust settings on the printer

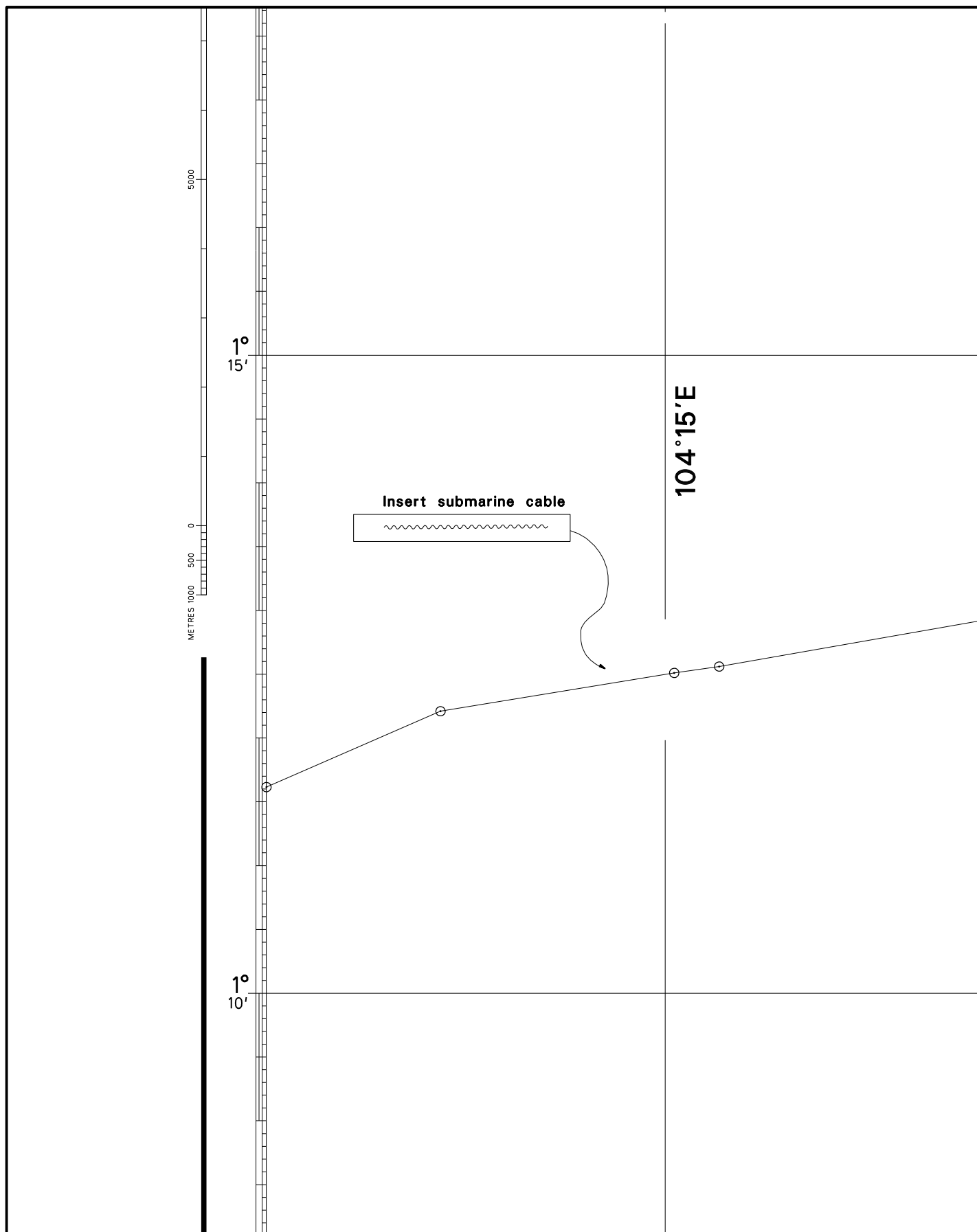
NOTICES TO MARINERS TRACINGS



CORRECTION NO.	SNM EDN NO.	LAST CORR N NO.	CHART NO.	Location on Chart		
5 (Sheet 2)	1/2018	3/2018	502			X

Caution: some computer printers might distort the tracings.
Users are advised to check and, if necessary, adjust settings on the printer

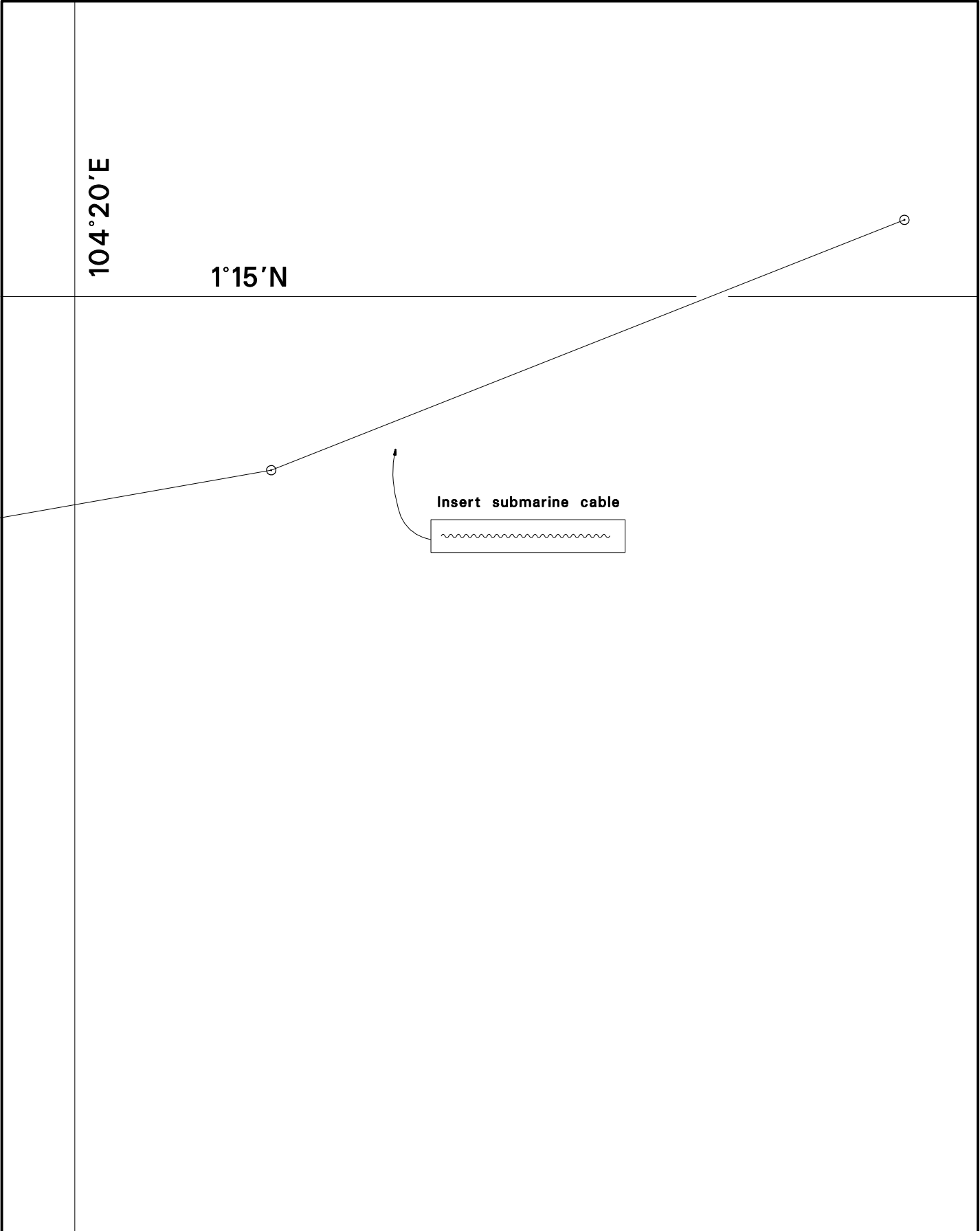
NOTICES TO MARINERS TRACINGS



CORRECTION NO.	SNM EDN NO.	LAST CORRNO NO.	CHART NO.	Location on Chart		
5 (Sheet 1)	1/2018	103/2017	503			
				X		

Caution: some computer printers might distort the tracings.
Users are advised to check and, if necessary, adjust settings on the printer

NOTICES TO MARINERS TRACINGS



CORRECTION NO.	SNM EDN NO.	LAST CORR N NO.	CHART NO.	Location on Chart		
5 (Sheet 2)	1/2018	103/2017	503			
				X		

Caution: some computer printers might distort the tracings.
Users are advised to check and, if necessary, adjust settings on the printer