



SINGAPOREAN NOTICES TO MARINERS

	CONTENT	Page
I	Index of Charts & Publications	1
II	New Publications	7
	Notices to Mariners and Chart Corrections	10
	Temporary and Preliminary Notices	11
III	Navigational Information	12
	Amendments to Publications	15
IV	Reprint of Radio Navigational Warnings	17
V	Reprint of Admiralty Notices to Mariners for Dual Badged Charts	18

The monthly Notices to Mariners contain corrective information affecting charts published by the Hydrographic Department, Maritime and Port Authority of Singapore. The information contained in these Notices should be updated on the charts affected. Notices under Section II apply only to the particular Singaporean Chart(s) indicated.

Mariners are requested to notify the Chief Hydrographer, Maritime and Port Authority of Singapore, immediately on the discovery of new dangers or suspected dangers to navigation and of changes or defects in aids to navigation. See Hydrographic Note on back page.

As announced since October 2006, we would no longer provide hardcopies of Singaporean Notices to Mariners (SNM), with effect from 1st January 2007. The monthly SNM can be accessed directly from the MPA website:

<http://www.mpa.gov.sg/infocentre/publications/noticesmari.htm>

This service is offered free of charge.

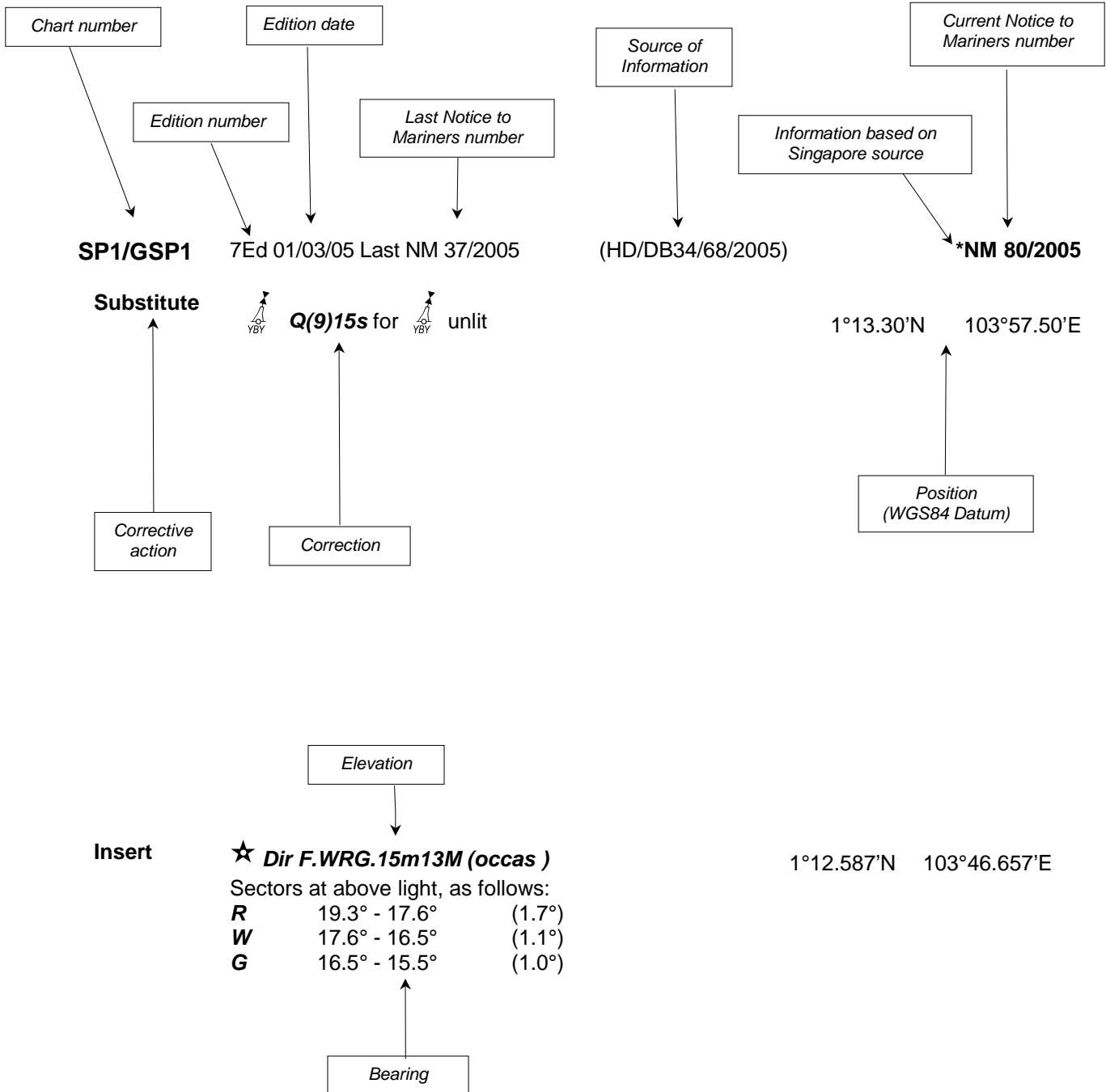
Hydrographic Department
Maritime and Port Authority of Singapore
P.O. Box 313
PSA Building Post Office
Singapore 911141
Tel: (65) 6375 1550
Fax: (65) 6278 7646

The Chief Hydrographer of
Maritime and Port Authority of Singapore
Wishes all users of Singaporean and
Dual Badged Charts

**A HAPPY NEW YEAR
AND
SAFE VOYAGE IN YEAR 2007**

EXPLANATION OF FORMAT

The elements of a typical chart correction are explained below.



Notes:

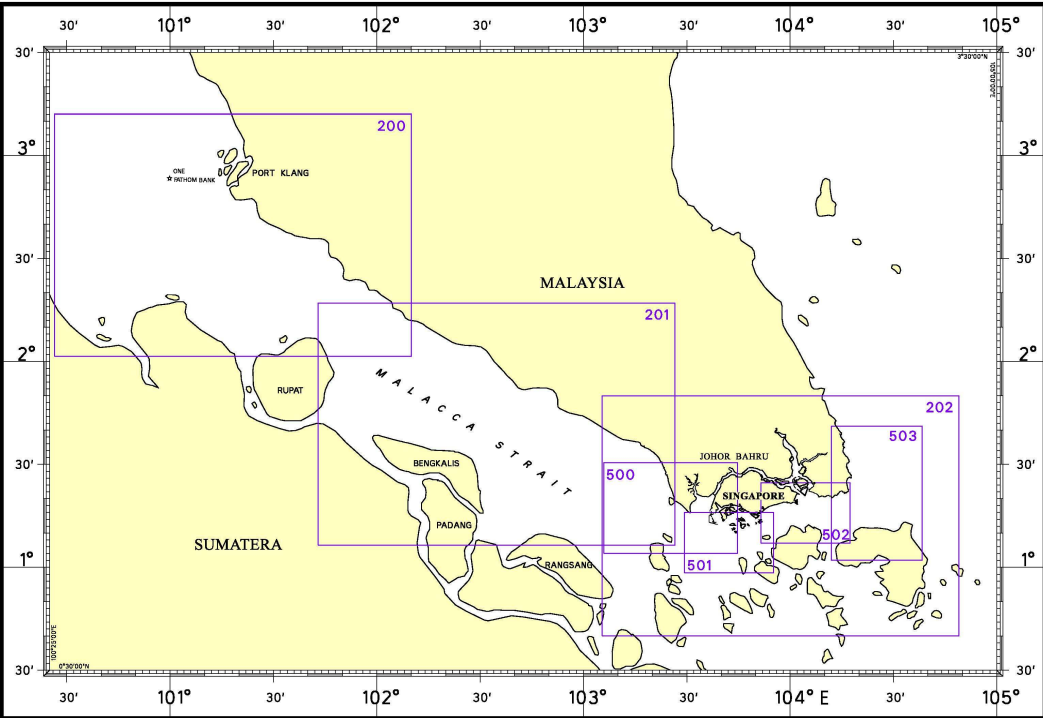
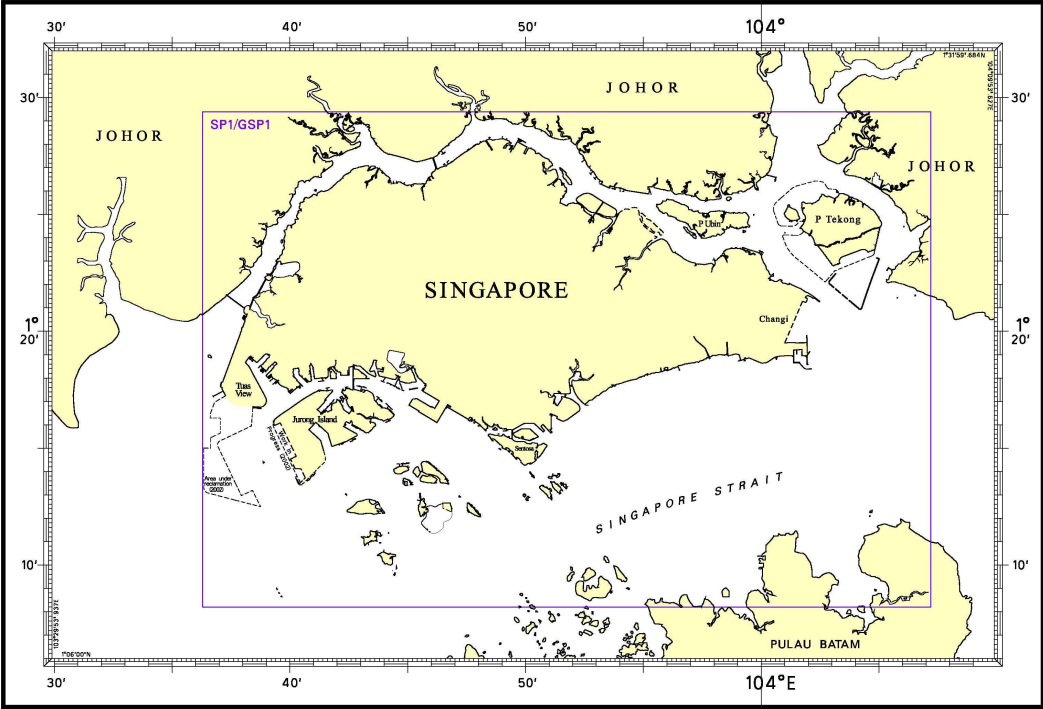
- a) Notice to Mariners number followed by:
 - T** indicates a Temporary Notice (eg. ***NM 80T/2005**).
 - P** indicates a Preliminary Notice (eg. ***NM 80P/2005**).
- b) Bearings are referred to True Compass in degrees clockwise from 000° to 359°. Bearings related to lights are from seaward.
- c) Heights and elevations are above Mean High Water Springs.

I

INDEX OF CHARTS AND PUBLICATIONS

NOTICES	DESCRIPTION	PAGE	NOTICES	DESCRIPTION	PAGE
	INDEX OF SINGAPOREAN CHARTS	2			
	INDEX OF DUAL BADGED CHARTS	4			
	New Publication "YEAR 2007 SINGAPORE TIDE TABLES"	7			
	New Edition SINGAPOREAN CHARTS	8			
*1	Numerical Index to Notices to Mariners of 2006	10			
*2	SP1/GSP1	10			
*3	SP1/GSP1	10			
*4	SP1/GSP1	10			
*5	502	10			
*6	Index of Annual Notices	12			
*7	Straits of Malacca and Singapore Routeing System	12			
*8T	Temporary and Preliminary Notices in Force	12			
*9	Port Marine Notices	14			
*10	Updating of Publication "SINGAPORE PORT INFORMATION"	15			

I
INDEX OF CHARTS AND PUBLICATIONS
INDEX OF SINGAPOREAN CHARTS

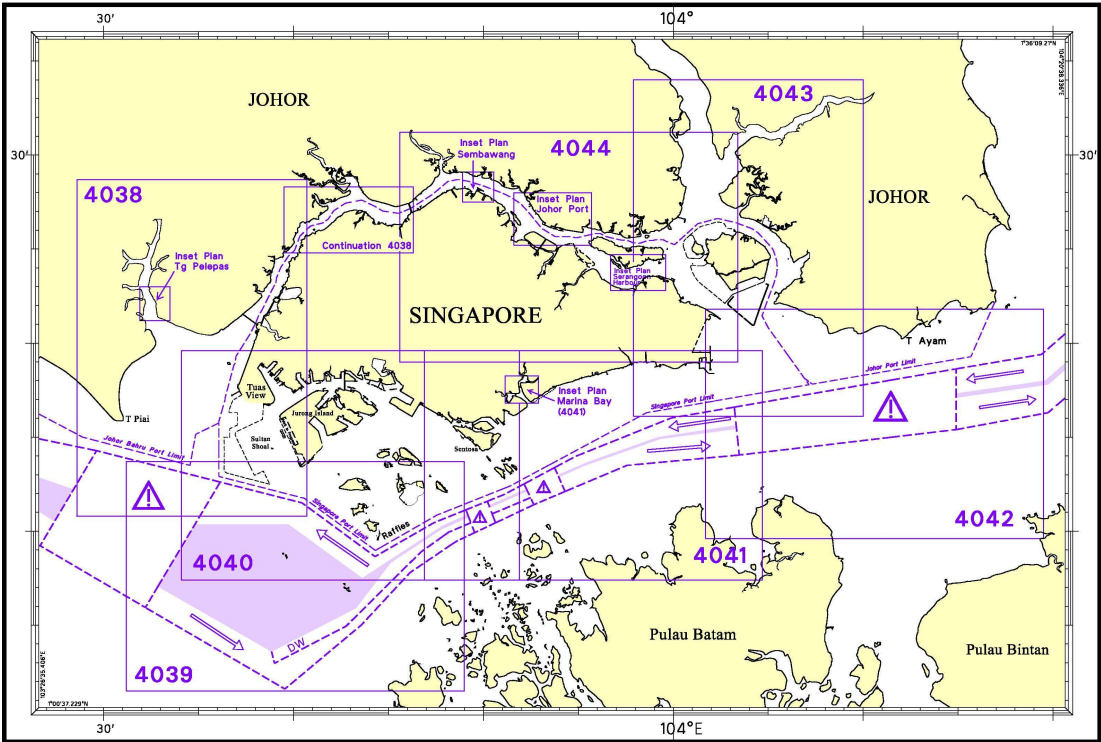
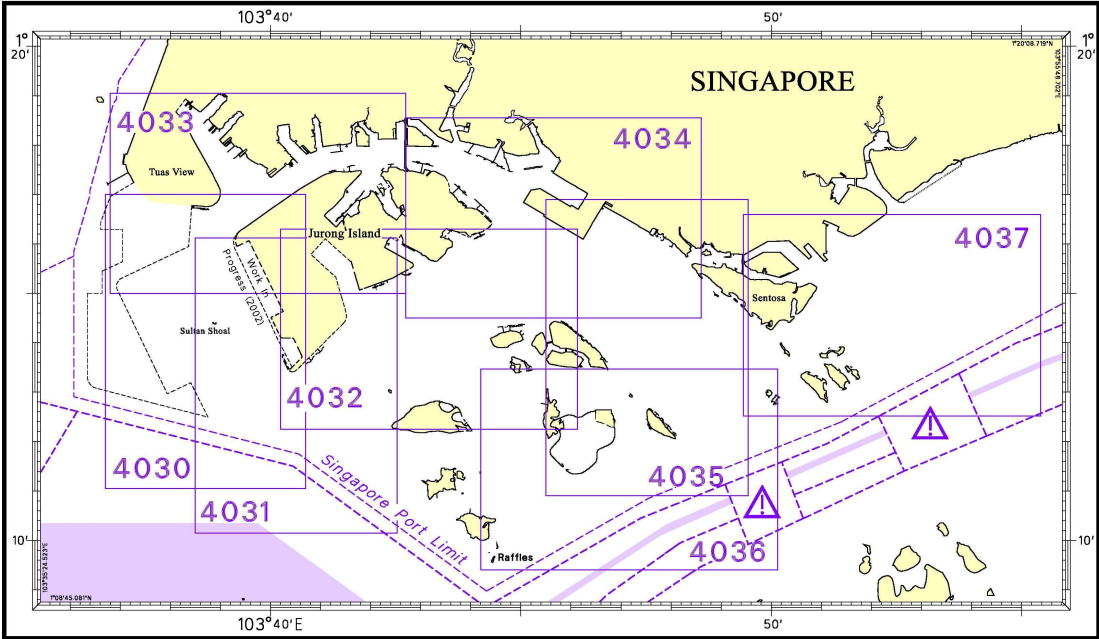


I

INDEX OF CHARTS AND PUBLICATIONS**SINGAPOREAN CHARTS CATALOGUE**

Chart No.	Title and Charts Limit Positions in WGS 84	Scale 1:	Date Published of latest Edition	Price (Excluding GST) S\$
1	Symbols and Abbreviations used on Singaporean produced Nautical Charts – July 2001	-	-	16.90
Charts for Small Craft	Singapore Strait & Adjacent Waterways	Various	28/01/05	91.00
SP1	Anchorage and Aids to Navigation	60 000	03/01/07	39.00
GSP1	Anchorage and Aids to Navigation (with Area Reference)	60 000	03/01/07	39.00
200	Malacca Strait - Port Klang to Tanjung Keling	200 000	30/11/05	39.00
201	Malacca Strait - Tanjung Keling to Western Entrance of Singapore Strait	200 000	15/09/03	39.00
202	Singapore Strait	200 000	19/10/06	39.00
500	Malacca and Singapore Straits – Pulau Pisang to Raffles Lighthouse	75 000	15/08/05	39.00
501	Singapore Strait – Western Part	50 000	21/09/06	39.00
502	Singapore Strait - Eastern Part	50 000	25/10/05	39.00
503	South China Sea - Eastern Approaches and Entrance to Singapore Strait	75 000	15/09/04	39.00

I
INDEX OF CHARTS AND PUBLICATIONS
INDEX OF DUAL BADGED CHARTS



I

INDEX OF CHARTS AND PUBLICATIONS

DUAL BADGED CHARTS CATALOGUE

Chart No.	Title and Charts Limit Positions In WGS 84	Scale 1:	Date Published of latest Edition
4030	Port of Singapore West Jurong Anchorages and Fairways	10 000	10/08/06
4031	Port of Singapore South Jurong Island and its Approaches	10 000	10/08/06
4032	Port of Singapore Sinki Fairway	10 000	10/08/06
4033	Port of Singapore Tuas Bay, West Jurong Channel and Pesek Basin	10 000	15/06/06
4034	Port of Singapore East Jurong Channel, Pasir Panjang Terminal and West Keppel Fairway	10 000	10/11/05
4035	Port of Singapore Western Anchorages, Jong Fairway and Cruise Bay	10 000	08/09/05
4036	Port of Singapore Raffles Lighthouse to The Sisters	10 000	08/09/05
4037	Port of Singapore Keppel Harbour, Tanjong Pagar Terminal and Approaches	10 000	13/04/06
4038	Johor Strait – Western Part	30 000	17/08/06
4039	Western Approaches to Main Strait	30 000	01/12/05
4040	Tuas View to Pulau Sakijang Bendera (S John's Island)	30 000	21/09/06
4041	Pulau Sebarok to Changi	30 000	01/12/05
4042	Changi to Pulau Mungging	30 000	20/05/04

I
INDEX OF CHARTS AND PUBLICATIONS

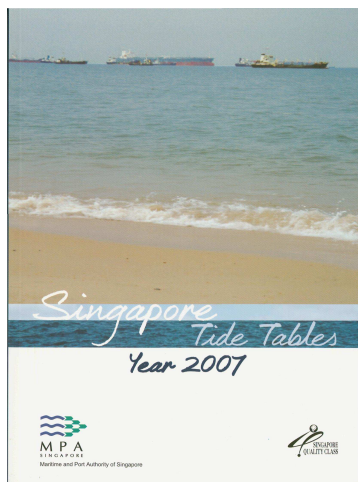
4043	Kuala Johor and Sungai Johor	30 000	26/09/02
4044	Johor Strait - Eastern Part	30 000	26/09/02

HYDROGRAPHIC PUBLICATIONS

Item	Title	Price (Excluding GST) S\$
1	Year 2007 Singapore Tide Tables	20.80
2	Singapore Port Information 2006/2007 Edition	15.60

II NEW PUBLICATIONS

NEW PUBLICATION



YEAR 2007 SINGAPORE TIDE TABLES

Summary of Publication

- (a) The daily prediction of tidal height and tidal stream stations within the Port of Singapore, Singapore Strait and Malacca Strait.
- (b) The predictions consist of 4 main segments to facilitate easy reference:
 - High and Low Water Predictions
 - Hourly Tidal Height Predictions
 - Hourly Tidal Stream Predictions
 - Maximum and Slack Tidal Stream Predictions
 - Malacca Strait – High and Low Water Predictions
- (c) As in earlier publications, the presentation of the predictions are enhanced with colour codes so as to differentiate the various states of tidal heights, eg falling or rising tide and tidal stream directions. Moon faces, eg full and new moon, are also included in each calendar month to complement the prediction values.
- (d) The Tidal Heights are given in metres above Chart Datum (CD) and can be referenced to all Singaporean Charts and Dual Badged Charts covering the area. A table showing the various tidal levels eg. MHWS, MLWS, etc, at various stations with reference to CD is also included in this publication.

To Whom Will It Be Useful?

Mariners, shipping community, port users and other interested users.

Frequency/Year of Publication

Annually

Cost of publication

The price of the publication is S\$20.80 (excluding Goods & Services Tax).

Order Enquires

Motion Smith : 76 Shenton Way #01-01
Singapore 079119
Tel : (65) 6220 5098
(After office hours:
Pager No. 9304 4156, 9304 4159)
Fax : (65) 6225 4902
E-mail : sales@motsmith.com
Website : <http://www.motsmith.com>

II NEW PUBLICATIONS

NEW EDITION SINGAPOREAN CHART TO BE PUBLISHED ON 31 JANUARY 2007

Chart No.	:	CHARTS FOR SMALL CRAFT
Title	:	Singapore Strait and Adjacent Waterways – 2007 Edition
Date Published	:	31 January 2007
Size of chart	:	600 x 400 mm
	:	The publication contains 19 Small Craft Charts and related nautical information bound into an atlas measuring 600 X 400 mm. The pages are laminated to prevent damage from seawater. The symbols, abbreviations and terms depicted on these charts are consistent with the International Hydrographic Organization Chart Standards and Specifications. Symbols for the locations of pleasure craft facilities and areas for sea sport activities such as board sailing, dinghy sailing, keelboat sailing, power-boating and water-skiing are also included and highlighted in red. Chart of the same publication 2005 Edition published on 28 January 2005 would be superseded.
Price (Excluding GST)	:	S\$91.00
Charts are available from	:	Motion Smith 76 Shenton Way #01-01 Singapore 079119
	Tel	: (65) 6220 5098 (After office hours, Pager No.9304 4156, 9304 4159)
	Fax	: (65) 6225 4902
	Email	: sales@motsmith.com
	Internet Website	: http://www.motsmith.com

II
NOTICES TO MARINERS AND CHART CORRECTIONS

***(NM 1/2007) NUMERICAL INDEX TO NOTICES TO MARINERS OF 2006 (1 TO 164)**

CHART NO.	PUBLISHED	YEAR	NOTICES NO.
SP1, GSP1	9Ed 03/01/07	2006	(NE)
200	2Ed 30/11/05	2006	49-51-64-95-96-97
201	2Ed 15/09/03	2006	2-19-28-29-49-65-66-67-68-84-85-86-96-98-127
202	5Ed 19/10/06	2006	(NE)-151
500	4Ed 15/08/05	2006	49-90-102-103-106-118-141-151-152
501	4Ed 21/09/06	2006	141-151-152
502	3Ed 25/10/05	2006	18-20-27-31-32-38-39-40-41-46-50-54-60-61-62-63-76-83-114-115-128-153
503	2Ed 15/09/04	2006	91-119

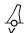
SP1/GSP1 9Ed 03/01/07 (HD/HE025/153 – 158/2006) ***NM 2/2007**

Insert Legend:
Numerous Mooring Buoys 1°16.37'N 103°52.18'E

(HD/HE025/149/2006) ***NM 3/2007**

Insert  **FI.Y.4s, TMSI 1**
(Previous NM 12/157T/2006 is superseded) 1°18.08'N 103°36.94'E

(HD/HE025/164/2006) ***NM 4/2007**

Insert  **FI.Y.1.4s, TMSI 2**
(Previous NM 12/157T/2006 is superseded) 1°20.43'N 103°37.78'E

502 3Ed 25/10/05 Last NM 153/2006 (HD/HY Code AB0302006) *** NM 5/2007**

Insert Accompanying block in the vicinity of the Eastern Anchorages 1°16.30'N 103°56.70'E
(Previous NM 12/158P/2006 is superseded)

II
TEMPORARY AND PRELIMINARY NOTICES

Nil

III NAVIGATIONAL INFORMATION

***(NM 6/2007) INDEX OF ANNUAL NOTICES**

These notices can be accessed directly from MPA website:
http://www.mpa.gov.sg/circulars_and_notices/portmarine_circulars/pm_circulars.htm

PMC No.	Subject
22/2003	Prohibited Area at Pulau Satumu (Raffles Lighthouse).
04/2005	Height Restricted Anchorages in Port.
21/2006	Prohibition on movement of vessels in waters surrounding: (A) Jurong Island (B) Pulau Busing & Pulau Bukom; (C) Pulau Sebarok & Shell SBM; and (D) Sembawang Wharves and Approaches thereto

***(NM 7/2007) STRAITS OF MALACCA AND SINGAPORE ROUTEING SYSTEM**

Information concerning schemes shown on Singaporean charts.
 (Former NM 1/3/2006 is cancelled.)

- 1 The information concerning the Straits of Malacca and Singapore Routeing System are charted in the Singaporean Charts 200, 201, 202, 500, 501, 502, 503 and Dual Badged Charts 4039, 4040, 4041 and 4042. All positions are referred to World Geodetic System 84 (WGS 84) datum.
- 2 The description of the Traffic Separation Scheme and the rules for vessels navigating through the Straits of Malacca and Singapore are published in the Singapore Port Information, 2006/2007 Edition.

***(NM 8T/2007) TEMPORARY AND PRELIMINARY NOTICES IN FORCE**

(Revised and published six monthly)

Previous NM 1/4T/06 is cancelled.

Notices	Subject
1/18T/99	Selat Durian - Karang Tengah light Fl.R.8s in position 0°51.30'N, 103°34.37'E is unlit.
1/20T/99	Selat Riau - West Cardinal buoy Q(9)15s in position 0°42.00'N, 104°25.09'E is unlit.
1/22T/99	Selat Riau - East Cardinal buoy Q(3)10s in position 0°51.3'N, 104°24.0'E is missing.
1/23T/99	Tanjong Stapa - Light Fl(3)20s43m14M in position 1°20.59'N, 104°08.15'E is unlit.
1/25T/99	Strait Bengkalis - Tanjong Jati light-beacon in position 1°36.07'N, 101°59.00'E reported damaged.

III NAVIGATIONAL INFORMATION

Notices	Subject																						
1/28T/99	Karimun - The following Aids to Navigation were reported unlit:																						
	<table border="0" style="width: 100%;"> <thead> <tr> <th style="text-align: left;">Colour and Shape</th> <th style="text-align: left;">Light Character</th> <th style="text-align: left;">Position</th> </tr> </thead> <tbody> <tr> <td>Yellow pillar light-buoy, X topmark</td> <td>Fl.Y.5s</td> <td>1°08.92'N, 103°20.21'E</td> </tr> <tr> <td>Green buoyant light-beacon</td> <td>Fl(2)G.10s</td> <td>1°08.09'N, 103°18.87'E</td> </tr> <tr> <td>Red buoyant light-beacon</td> <td>Fl(2)R.10s</td> <td>1°08.15'N, 103°19.29'E</td> </tr> <tr> <td>Red buoyant light-beacon</td> <td>Fl(2)R.5s</td> <td>1°06.78'N, 103°19.09'E</td> </tr> <tr> <td>West Cardinal buoyant light-beacon</td> <td>Q(9)15s</td> <td>1°08.75'N, 103°19.25'E</td> </tr> </tbody> </table>	Colour and Shape	Light Character	Position	Yellow pillar light-buoy, X topmark	Fl.Y.5s	1°08.92'N, 103°20.21'E	Green buoyant light-beacon	Fl(2)G.10s	1°08.09'N, 103°18.87'E	Red buoyant light-beacon	Fl(2)R.10s	1°08.15'N, 103°19.29'E	Red buoyant light-beacon	Fl(2)R.5s	1°06.78'N, 103°19.09'E	West Cardinal buoyant light-beacon	Q(9)15s	1°08.75'N, 103°19.25'E				
Colour and Shape	Light Character	Position																					
Yellow pillar light-buoy, X topmark	Fl.Y.5s	1°08.92'N, 103°20.21'E																					
Green buoyant light-beacon	Fl(2)G.10s	1°08.09'N, 103°18.87'E																					
Red buoyant light-beacon	Fl(2)R.10s	1°08.15'N, 103°19.29'E																					
Red buoyant light-beacon	Fl(2)R.5s	1°06.78'N, 103°19.09'E																					
West Cardinal buoyant light-beacon	Q(9)15s	1°08.75'N, 103°19.25'E																					
1/29T/99	Strait Bengkalis - White light-beacon in position 1°39.49'N, 101°50.31'E reported unlit.																						
1/31T/99	Selat Bengkalis - RWVS buoy in position 1°54.10'N, 101°51.40'E reported unlit.																						
1/34T/99	Kabil Harbour – The following Aids to Navigation were reported unlit:																						
	<table border="0" style="width: 100%;"> <thead> <tr> <th style="text-align: left;">Colour and Shape</th> <th style="text-align: left;">Position</th> </tr> </thead> <tbody> <tr> <td>Green spar buoy</td> <td>1°07.7'N, 104°10.4'E</td> </tr> <tr> <td>Red spar buoy</td> <td>1°07.6'N, 104°10.5'E</td> </tr> <tr> <td>Green spar buoy</td> <td>1°06.4'N, 104°09.4'E</td> </tr> <tr> <td>Red spar buoy</td> <td>1°06.3'N, 104°09.5'E</td> </tr> <tr> <td>Green spar buoy</td> <td>1°05.4'N, 104°09.1'E</td> </tr> <tr> <td>Red spar buoy</td> <td>1°05.4'N, 104°09.2'E</td> </tr> <tr> <td>Yellow spar buoy</td> <td>1°04.6'N, 104°08.4'E</td> </tr> <tr> <td>Yellow spar buoy</td> <td>1°04.1'N, 104°08.3'E</td> </tr> <tr> <td>Red spar buoy</td> <td>1°04.0'N, 104°08.8'E</td> </tr> <tr> <td>Red spar buoy</td> <td>1°04.5'N, 104°08.3'E</td> </tr> </tbody> </table>	Colour and Shape	Position	Green spar buoy	1°07.7'N, 104°10.4'E	Red spar buoy	1°07.6'N, 104°10.5'E	Green spar buoy	1°06.4'N, 104°09.4'E	Red spar buoy	1°06.3'N, 104°09.5'E	Green spar buoy	1°05.4'N, 104°09.1'E	Red spar buoy	1°05.4'N, 104°09.2'E	Yellow spar buoy	1°04.6'N, 104°08.4'E	Yellow spar buoy	1°04.1'N, 104°08.3'E	Red spar buoy	1°04.0'N, 104°08.8'E	Red spar buoy	1°04.5'N, 104°08.3'E
Colour and Shape	Position																						
Green spar buoy	1°07.7'N, 104°10.4'E																						
Red spar buoy	1°07.6'N, 104°10.5'E																						
Green spar buoy	1°06.4'N, 104°09.4'E																						
Red spar buoy	1°06.3'N, 104°09.5'E																						
Green spar buoy	1°05.4'N, 104°09.1'E																						
Red spar buoy	1°05.4'N, 104°09.2'E																						
Yellow spar buoy	1°04.6'N, 104°08.4'E																						
Yellow spar buoy	1°04.1'N, 104°08.3'E																						
Red spar buoy	1°04.0'N, 104°08.8'E																						
Red spar buoy	1°04.5'N, 104°08.3'E																						
3/42T/00	Malacca Strait – Light-beacon at Pulau Iyu Kechil, Fl(3)15s in position 1°11.00'N, 103°21.00'E reported unlit.																						
4/40T/01	Pulau Batam – Batu Ampar light in position 1°10.35'N, 104°00.48'E reported missing.																						
4/42T/01	Bengkalis Strait – Red can buoy in position 1°14.18'N, 102°10.23'E reported missing.																						
4/43T/01	Bengkalis Strait – Green can buoy in position 1°14.18'N, 102°10.02'E reported missing.																						

III
NAVIGATIONAL INFORMATION

***(NM 9/2007) PORT MARINE NOTICES**

These notices can be accessed directly from MPA website:
http://www.mpa.gov.sg/circulars_and_notices/portmarine_notices/pm_notices.htm

PMN No.	Subject
154/2006	Construction of bridge across Selat Chermin (Keppel Bay Drive to Pulau Keppel) and breakwater at Pulau Keppel.
157/2006	Marine Jetty construction works at Pulau Busing.
161/2006	Dredging and Marine construction works at Sungei Punggol , Pulau Punggol Barat and Pulau Punggol Timur.
163/2006	Construction of Marine Barrage.

III AMENDMENTS TO PUBLICATIONS

*(NM 10/2007) UPDATING OF PUBLICATION "SINGAPORE PORT INFORMATION 2006/2007 EDITION"

1 DESIGNATED ANCHORAGES AND FAIRWAYS IN THE PORT

Page 93 – Amend the followings:

Item (2) – Eastern Bunkering C Anchorage (Abbreviated Code: AEBC) is bounded by a line joining the following geographical positions:

Delete -

(1)	01°16.630' N	103°58.710' E	(3)	01°16.107' N	103°52.512' E
(2)	01°16.107' N	103°57.681' E	(4)	01°16.630' N	103°52.512' E

Insert -

(1)	01°16.630' N	103°58.710' E	(4)	01°16.496' N	103°55.472' E
(2)	01°16.107' N	103°57.682' E	(5)	01°16.630' N	103°55.472' E
(3)	01°16.107' N	103°56.012' E			

2 Page 94 – Amend the followings:

Item (9) – Eastern Special Purposes A Anchorage (Abbreviated Code: AESPA) is bounded by a line joining the following geographical positions:

Delete -

(1)	01°17.496' N	103°56.013' E	(4)	01°16.630' N	103°56.512' E
(2)	01°17.497' N	103°58.710' E	(5)	01°16.107' N	103°56.512' E
(3)	01°16.630' N	103°58.710' E	(6)	01°16.107' N	103°56.013' E

Insert -

(1)	1°16.630' N	103°56.012' E	(3)	1°17.497' N	103°58.710' E
(2)	1°17.497' N	103°56.012' E	(4)	1°16.630' N	103°58.710' E

3 Page 94 – Amend the followings:

Item (10) – Laid-up Vessels Anchorage (Abbreviated Code: ALUV) is bounded by a line joining the following geographical positions:

Delete -

(1)	01°17.570' N	103°55.478' E	(3)	1°16.107' N	103°56.012' E
(2)	01°17.781' N	103°56.012' E	(4)	1°16.495' N	103°55.472' E

Insert -

(1)	1°16.630' N	103°55.472' E	(3)	1°17.780' N	103°56.012' E
(2)	1°17.569' N	103°55.472' E	(4)	1°16.630' N	103°56.012' E

III AMENDMENTS TO PUBLICATIONS

4 Page 130

EASTERN ROADS

Amend the following:

Name of Beacon / Buoy	Position	
	Lat. N Long. E Deg Min	Position Lat. N Long. E Deg Min
Forward Buoy	Delete	Insert
	01 16.107 103 56.012	01 16.496 103 55.472

Source: HD/HY Code AB0302006

5 Page 152

**Item 16A JURONG ISLAND – BANYAN BASIN (HORIZON SINGAPORE TERMINALS PTE LTD)
(1°14.7'N, 103°41.4'E)**

Insert the following:

Berth	Length of Berth	Depth Alongside (Year Surveyed)	Controlling Depth In Approaches
OBH 3	267m	16.5m (2006)	16.5m – from Sinki Fairway and 15.0m from Selat Pandan
OBH 4	267m	16.5m (2006)	

Source: HD/HY Code E00111706

IV
REPRINT OF RADIO NAVIGATIONAL WARNINGS

Nil

V
REPRINT OF ADMIRALTY NOTICES TO MARINERS
FOR DUAL BADGED CHARTS

5190/06 * SINGAPORE STRAIT— Serangoon Harbour — Loyang jetty North — eastwards - Buoyage.

Source: Maritime and Port Authority of Singapore DBNMs 71 - 73/06

Chart 4044 (plan A, Serangoon Harbour) (previous update 4847/06) WGS84 DATUM

Insert

	<i>FI(2)Y.2s PCG L1</i>	1° 23'.230N., 103° 58'.170E.
	<i>FI(2)Y.8s PCG L2</i>	1° 23'.245N., 103° 58'.216E.
	<i>FI(2)Y.10s PCG L3</i>	1° 23'.267N., 103° 58'.245E.

5191/06 * SINGAPORE — Ordnance Reach — Depths.

Source: Maritime and Port Authority of Singapore DBNM 74/06

Chart 4044 (previous update 5190/06) WGS84 DATUM

Substitute

depth g_2 enclosed by 10m contour for depth g_8 enclosed by 10m contour	1° 27'.69N., 103° 47'.15E.
---	----------------------------

5193/06 * SINGAPORE STRAIT — Western Part — Nipa Transit Anchorage - Buoyage. (continued)

Source: Maritime and Port Authority of Singapore DBNM 71-73/06

Chart 4039 (previous update 4845/06) WGS84 DATUM

Insert

	<i>FI(2)Y.6s</i>	1° 09'.10N., 103° 38'.60E.
	<i>FI. Y.5s</i>	1° 05'.50N., 103° 40'.80E.
	<i>FI. Y.3s</i>	1° 04'.50N., 103° 38'.90E.
	<i>FI. Y.4s</i>	1° 07'.30N., 103° 34'.20E.
	<i>FI(4)Y.10s</i>	1° 09'.50N., 103° 35'.60E.

Chart 4040 (previous update 4838/06) WGS84 DATUM

Insert

	<i>FI(2)Y.6s</i>	1° 09'.10N., 103° 38'.60E.
	<i>FI(4)Y.10s</i>	1° 09'.50N., 103° 35'.60E.

5194/06 * SINGAPORE— West Jurong Channel — Depth.

Source: Maritime and Port Authority of Singapore DBNM63/06

Chart 4030 (previous update 4837/06) WGS84 DATUM

Insert

Depth <i>12</i>	1° 16'.464N., 103° 39'.463E.
-----------------	------------------------------

Chart 4033 (previous update 4837/06) WGS84 DATUM

Insert

Depth <i>12</i>	1° 16'.464N., 103° 39'.463E.
-----------------	------------------------------

V
**REPRINT OF ADMIRALTY NOTICES TO MARINERS
 FOR DUAL BADGED CHARTS**

**5195/06 * SINGAPORE — Sinki Fairway — Pulau Busing to Pulau Bukom Kechil — Works. Light. Buoyage.
 Maritime limit. Beacon.**

Light List Vol. F, 2006/07, 1690.65


Source: Maritime and Port Authority of Singapore DBNMs 48 & 64/2006

Chart 4032 [previous update 4838/06] WGS84 DATUM

Insert the accompanying block, showing works area, light and buoyage, centred on:

1° 13'·800N., 103° 45'·220E.

Substitute

 Busing (disused) for  Busing

1° 14'·200N., 103° 44'·305E.

Chart 4035 [previous update 4839/06] WGS84 DATUM

Insert maritime limit, pecked line, joining:

1° 13'·919N., 103° 45'·540E.
 (shore)

1° 13'·925N., 103° 45'·577E.

1° 13'·871N., 103° 45'·645E.

1° 13'·836N., 103° 45'·653E.

(shore)

And

1° 13'·529N., 103° 45'·773E.
 (shore)

(a) 1° 13'·381N., 103° 45'·785E.

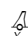
(b) 1° 13'·369N., 103° 45'·563E.

1° 13'·397N., 103° 45'·500E.

(W border)

1° 13'·460N., 103° 45'·610E.

legend, Works in progress (2006), centred on:

 *F(4)Y.15s Ular 1*

(a) above

 *Fl.Y.4s Ular 2*

(b) above

Chart 4036 [previous update 2183/06] WGS84 DATUM

Insert maritime limit, pecked line, joining:

1° 13'·470N., 103° 45'·778E.
 (N border)

(a) 1° 13'·381N., 103° 45'·785E.

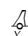
(b) 1° 13'·369N., 103° 45'·563E.

1° 13'·470N., 103° 45'·339E.

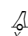
(N border)

1° 13'·435N., 103° 45'·595E.

legend, Works in progress (2006), centred on:

 *F(4)Y.15s Ular 1*

(a) above

 *Fl.Y.4s Ular 2*

(b) above

Chart 4039 [previous update 5193/06] WGS84 DATUM

Insert maritime limit, pecked line, joining:

1° 13'·529N., 103° 45'·773E.
 (shore)

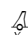
(a) 1° 13'·381N., 103° 45'·785E.

(b) 1° 13'·369N., 103° 45'·563E.

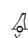
1° 13'·526N., 103° 45'·215E.

1° 13'·480N., 103° 45'·520E.

legend, Works in progress (2006), centred on:

 *F(4)Y.15s Ular 1*

(a) above



 *Fl.Y.4s Ular 2*

(b) above

V
REPRINT OF ADMIRALTY NOTICES TO MARINERS
FOR DUAL BADGED CHARTS

Chart 4040 [previous update 5193/06] WGS84 DATUM

Substitute

 Busing (disused) for  Busing

1° 14'.20N., 103° 44'.31E.

5196/06 * SINGAPORE — Jurong Island — Ayer Chawan Basin — Submarine power cable. Submarine cable.

Source: Maritime and Port Authority of Singapore

Chart 4033 [previous update 5194/06] WGS84 DATUM

Substitute

  for , joining:

1° 16'.811N., 103° 42'.459E.

(shore)

1° 16'.766N., 103° 42'.348E.

1° 16'.748N., 103° 42'.254E.

(shore)

5197/06 * SINGAPORE — Jurong Island — Sakra Basin — Dredged area. Dredged depths.

Source: Maritime and Port Authority of Singapore DBNM 66 - 68/06

Chart 4032 [previous update 5195/06] WGS84 DATUM

Insert

dredged area, pecked line, joining:

(a) 1° 15'.659N., 103° 43'.219E. (shore)

(b) 1° 15'.644N., 103° 43'.211E.

(c) 1° 15'.675N., 103° 43'.156E.

(d) 1° 15'.689N., 103° 43'.163E. (shore)

Amend dredged depth, *3.0m(2006)*, within:
dredged depth to, *7.7m(2006)*, centred on:
dredged depth to, *10.8m(2006)*, centred on:

(a)-(d) above

1° 15'.853N., 103° 42'.830E.

1° 15'.898N., 103° 42'.749E.

1° 15'.942N., 103° 42'.667E.

Delete dredged depth to, *1.8m(2006)*, centred on:
dredged depth to, *6.8m(2006)*, centred on:
depth *3_s*, adjacent to:

1° 15'.723N., 103° 43'.109E.

1° 15'.765N., 103° 43'.019E.

(c) above

Chart 4034 [previous update 4836/06] WGS84 DATUM

Insert

dredged area, pecked line, joining:

(a) 1° 15'.659N., 103° 43'.219E. (shore)

(b) 1° 15'.644N., 103° 43'.211E.

(c) 1° 15'.675N., 103° 43'.156E.

(d) 1° 15'.689N., 103° 43'.163E. (shore)

Amend dredged depth, *3.0m(2006)*, within:
dredged depth to, *7.7m(2006)*, centred on:
dredged depth to, *10.8m(2006)*, centred on:
dredged depth to, *1.8m(2006)*, centred on:
dredged depth to, *6.8m(2006)*, centred on:

(a)-(d) above

1° 15'.853N., 103° 42'.830E.

1° 15'.898N., 103° 42'.749E.

1° 15'.723N., 103° 43'.109E.

1° 15'.765N., 103° 43'.019E.

Delete depth *3_s*, adjacent to:

(c) above

V
REPRINT OF ADMIRALTY NOTICES TO MARINERS
FOR DUAL BADGED CHARTS

5198/06 * SINGAPORE — Singapore Island — Tanjong Berlayar West and North-westwards — Depth. Obstruction. Wrecks.

Source: Maritime and Port Authority of Singapore DBNM 39 & 58/06

Chart 4034 [previous update 5197/06] WGS84 DATUM


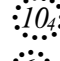

Substitute	 <i>Wk</i> for depth 10 ₃	1° 15'.760N., 103° 48'.019E.
Delete	 <i>Obstn</i>	1° 15'.991N., 103° 47'.914E.
	 <i>Wk</i>	1° 15'.788N., 103° 48'.216E.

Chart 4035 [previous update 5195/06] WGS84 DATUM

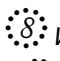
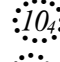


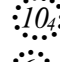
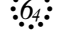
Substitute	 <i>Wk</i> for depth 10 ₃	1° 15'.760N., 103° 48'.019E.
Delete	 <i>Obstn</i>	1° 15'.991N., 103° 47'.914E.
	 <i>Wk</i>	1° 15'.788N., 103° 48'.216E.

Chart 4041 [previous update 4916/06] WGS84 DATUM

Insert	 <i>Wk</i>	1° 15'.76N., 103° 48'.02E.
Delete	 <i>Obstn</i>	1° 15'.99N., 103° 47'.91E.
	 <i>Wk</i>	1° 15'.79N., 103° 48'.22E.

5199/06 * SINGAPORE — East Jurong Channel — Pasir Panjang Terminal and Pasir Panjang Fairway — Depths. Dredged depths.

Source: Maritime and Port Authority of Singapore DBNM 41, 42, 49 & 69/06

Chart 4034 [previous update 5198/06] WGS84 DATUM

Insert	depth 14 ₉	(a) 1° 16'.631N., 103° 46'.649E.
	depth 14 ₉ and extend 15m contour N to enclose	1° 16'.577N., 103° 46'.673E.
Amend	dredged depth to, 15.0m(2006), centred on:	1° 16'.775N., 103° 46'.184E.
		1° 17'.077N., 103° 46'.222E.
		1° 16'.764N., 103° 46'.069E.
Delete	depth 14 ₄ , close SSW of:	(a) above
	depth 14 ₃ , close NNE of:	(a) above


Chart 4035 [previous update 5198/06] WGS84 DATUM

Insert	depth 14 ₉	(a) 1° 16'.631N., 103° 46'.649E.
	depth 14 ₉ and extend 15m contour N to enclose	1° 16'.577N., 103° 46'.673E.
Delete	depth 14 ₄ , close SSW of:	(a) above
	depth 14 ₃ , close NNE of:	(a) above

5200/06 * SINGAPORE — East Jurong Channel — Pasir Panjang Terminal North-westwards — Buoy.

Source: Maritime and Port Authority of Singapore DBNM 65/06

Chart 4034 [previous update 5199/06] WGS84 DATUM

Insert	 <i>Fl.Y.10s Retan Empat</i>	1° 17'.511N., 103° 45'.042E.
--------	---	------------------------------

V
REPRINT OF ADMIRALTY NOTICES TO MARINERS
FOR DUAL BADGED CHARTS

5321/06 * SINGAPORE — East Jurong Channel — Pasir Panjang Terminal North-westwards — Light-beacon.

Light List Vol. F, 2006/07, 1700.3

Source: Maritime and Port Authority of Singapore DBNM 78/06

Chart 4034 [previous update 5200/06] WGS84 DATUM

Delete



Q(9)15s5m West Retan

1° 17'.532N., 103° 45'.095E.

5322/06 * SINGAPORE — Johor Strait — Tengeh Reservoir Westwards — Buoy.

Source: Maritime and Port Authority of Singapore DBNM 80/06

Chart 4038 [previous update 4846/06] WGS84 DATUM

Move



Fl.G.2s Laba from:

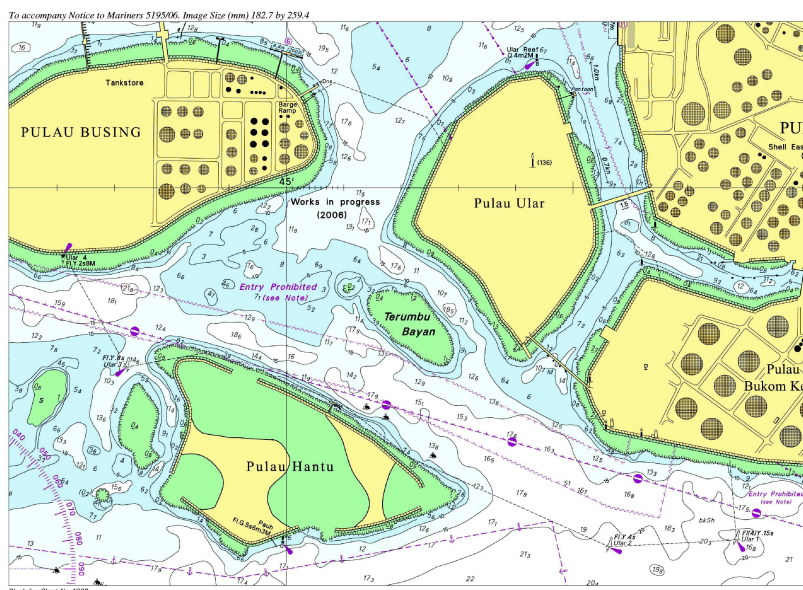
1° 21'.51N., 103° 38'.30E.

to:

1° 21'.22N., 103° 38'.12E.

Note: 5195/06* - Chart 4032 – accompanying block

This block correction is for illustration only. The actual block correction should be obtained from the Admiralty Notices to Mariners.



Updated to Admiralty Notices to Mariners Edition No. 50 of 2006 dated 14 December 2006

SINGAPORE ELECTRONIC NAVIGATIONAL CHARTS (ENC) DISTRIBUTORS
Please approach any of the appointed distributors to purchase the Singapore ENC.

PERSON TO CONTACT	ADDRESS	TELEPHONE/FAX NO./EMAIL/WEBSITE
Mr Chong Chee Meng General Manager	DPM (Singapore) Pte Ltd 1 Maritime Square, #09-72 Harbour Front Centre, Singapore 099253	Tel. No.: +65 6270 4060 Fax No.: +65 6276 3858 Email: sales@dpmsingapore.com.sg Website: http://www.dpmsingapore.com.sg
Ms Shirley Koh	Kelvin Hughes (S) Pte Ltd 8 Pandan Avenue #02-00, Singapore 609384	Tel. No.: +65 6545 9880 ext.12 Fax No.: +65 6545 8892 Email: shirley.koh@khsing.com Website: http://www.kelvinhughes.co.uk
Mr Philip Loh Sales Manager	Motion Smith 76 Shenton Way #01-01, Singapore 079119	Tel. No.: +65 6220 5098 Fax No.: +65 6225 4902 Email: sales@motsmith.com Website: http://www.motsmith.com
Mr Choy Kum Weng Director	Vector Services Pte Ltd 2 Maritime Square #04-12B SPI Building, Singapore 099255	Tel. No.: +65 6278 7212 Fax No.: +65 6278 7212 Email: kwchoy@pacific.net.sg
Mr Looi Keen Wai Regional Sales Manager	Transas Marine Pacific Pte Ltd 750C Chai Chee Road, Technopark@Chai Chee, #04-07 Singapore 469003	Tel. No.: +65 6443 3061 Fax No.: +65 6443 3025 Email: looi@transas.com.sg Website: www.transas.com.sg
Mr George Arts President	Marine Press of Canada 640 Rue St-Paul Ouest, Suite 300 Montreal (QC) Canada, H3C1L9	Tel. No.: (514) 866-8342 Fax No.: (514) 866-9050 Email: sales@marinepress.com Website: www.marinepress.com
Mr Thomas Wilde Superintendent	HanseNautic GmbH Bade & Hornig, Eckardt & Messtorff Herrengarten 31 D-20459 Hamburg, Germany	Tel. No.: +49 40 374 811-32 Fax No.: +49 40 366 400 Email: info@HanseNautic.com Website: http://www.HanseNautic.com
Ms Verena Borsos Manager	SevenCs AG + Co. KG Ruhrstrasse 90, D-22761 Hamburg, Germany	Tel. No.: +49 40 853 58 6940 Fax No.: +49 40 853 58 6949 Email: sales@chartworld.com Website: http://www.sevencs.com
Mr K. Shimiz ENC Manager	Japan Hydrographic Association ENC Service Division 5-3-3 Tsukiji, Chuo-ku Tokyo 104-0045, Japan	Tel. No.: +81 3 3543 0752 Fax No.: +81 3 3543 0695 Email: enc-support@jha.jp Website: http://www.jha.jp.com
Mr Jester-Kim Foreign Business Department Manager	E_MLX Co. Ltd Ssangyong Research No.2 Lab Sinseong-Dong 100 Yusong-Gu, Daejeon 305-804, Korea (ROK)	Tel. No.: +82 42 865 1893 Fax No.: +82 42 865 1884 Email: Jester-kim@emlx.co.kr
Mr C G Kim	Korean Ocean Development Co. Ltd 2ND Fl, Dongbang Bldg, 25-4, 4 Ga Jungang-Dong, Jung-Gu, Busan, South Korea	Tel. No.: +82 514 66 0760 Fax No.: +82 514 65 9345 Email: sales@chartkorea.com Website: http://chartkorea.com
Mr Kjell Nodland	C-Map Norway A/S P.O Box 212, N-4371 Egersund, Norway	Tel No.: +47 514 64 700 Fax No: +47 514 64 701 Email: market@c-map.no Website: http://www.c-map.no

Ms Marianne Barstad	PRIMAR STAVANGER Lervigsveien 36, P.O Box 60, N-4001 Stavanger, Norway	Tel. No.: +47 51 93 9500 Fax No.: +47 51 93 9501 Email: sales@primar.org Website: http://www.primar-stavanger.org
Mr Roar Moe International Marketing Coordinator	Maritime Information System AS (MARIS) Danholmen 25, No.3115 Tonsberg, Norway	Tel. No.: +47 33 30 42 50 Fax No.: +47 33 30 42 51 Email: roar.moe@maris.no Website: http://www.maris.no
Mr Andy Criddle Regional Sales Manager	United Kingdom Hydrographic Office Admiralty Way, Taunton, Somerset TA1 2DN United Kingdom	Tel. No.: +44 (0)1823 337900 Fax No.: +44 (0)1823 284077 Email: vargroup@ukho.gov.uk & andrew.criddle@ukho.gov.uk Website: www.ukho.gov.uk

CHART AGENT FOR MARITIME AND PORT AUTHORITY OF SINGAPORE (MPA) PUBLICATIONS

Agent's name : Motion Smith
Address : 76 Shenton Way # 01-01
Singapore 079119
Telephone : (65) 6220 5098
: (After Office hours: Pager No. 9304 4156, 9304 4159)
Fax No. : (65) 6225 4902
E-mail : sales@motsmith.com
Website : <http://www.motsmith.com>

HYDROGRAPHIC NOTE - Instructions

1. Mariners are requested to notify the Chief Hydrographer, Maritime and Port Authority of Singapore, when new or suspected dangers to navigation are discovered, changes are observed in aids to navigation or where corrections to nautical publications may be necessary. Reports which cannot be confirmed or are lacking in certain details should not be withheld.
2. Any ambiguities of time, positioning and depth should be stressed and any firm expectation of being able to check the information provided on a following voyage should be mentioned.
3. Mariners using satellite position fixing systems, eg. GPS, should provide details of equipment and datum used (where applicable). Where bearings (true or magnetic) are taken visually or by radar to fix a position, it should include more than two objects in order to provide a check on its accuracy. A position may also be defined by bearing and distance from a conspicuous object eg. beacon, lighthouse etc.
4. The note should include a tracing or a digital image of the chart used and the details should be clearly marked.
5. Echo sounders frequently register greater depths than the advertised maximum depth for the equipment, eg. a trace appearing at 50 metres may be in fact be 550 metres or even 1050 metres for equipment whose maximum depth is 500 metres. Erroneous depths caused by 2nd transmission error can usually be recognised by the following:
 - (a) the tracing being weaker than normal for the depth registered,
 - (b) the trace appearing to pass through the transmission line,
 - (c) the feathery nature of the trace.
6. An acknowledgement of receipt will be sent. When a Notice to Mariners is issued, the sender's vessel or name is quoted as the source unless the same information is also received in foreign Notices to Mariners.
7. Reports of shoals, uncharted dangers and defects in aids to navigation may also be made to the appropriate Singapore Port Operations Control Station on VHF Channels 10, 12, 14, 68 or 73.

HYDROGRAPHIC NOTE

To:

Chief Hydrographer
Hydrographic Department
Maritime and Port Authority of Singapore
460 Alexandra Road #20-00 PSA Building
Singapore 119963

Tel : (65) 6375 1550 or (65) 6375 1551
Fax : (65) 6278 7646
Email : hydrographic@mpa.gov.sg

Sender's Contact Details :

Date :

Name of Vessel :

Address of Sender :

Tel : Fax :

Email :

Nature of Observation :

General Location :

Subject :

Position : Lat. Long.

Charts Used :

Date & Time of Observation :

Details :

.....

.....

Attachment :

Equipment Used :

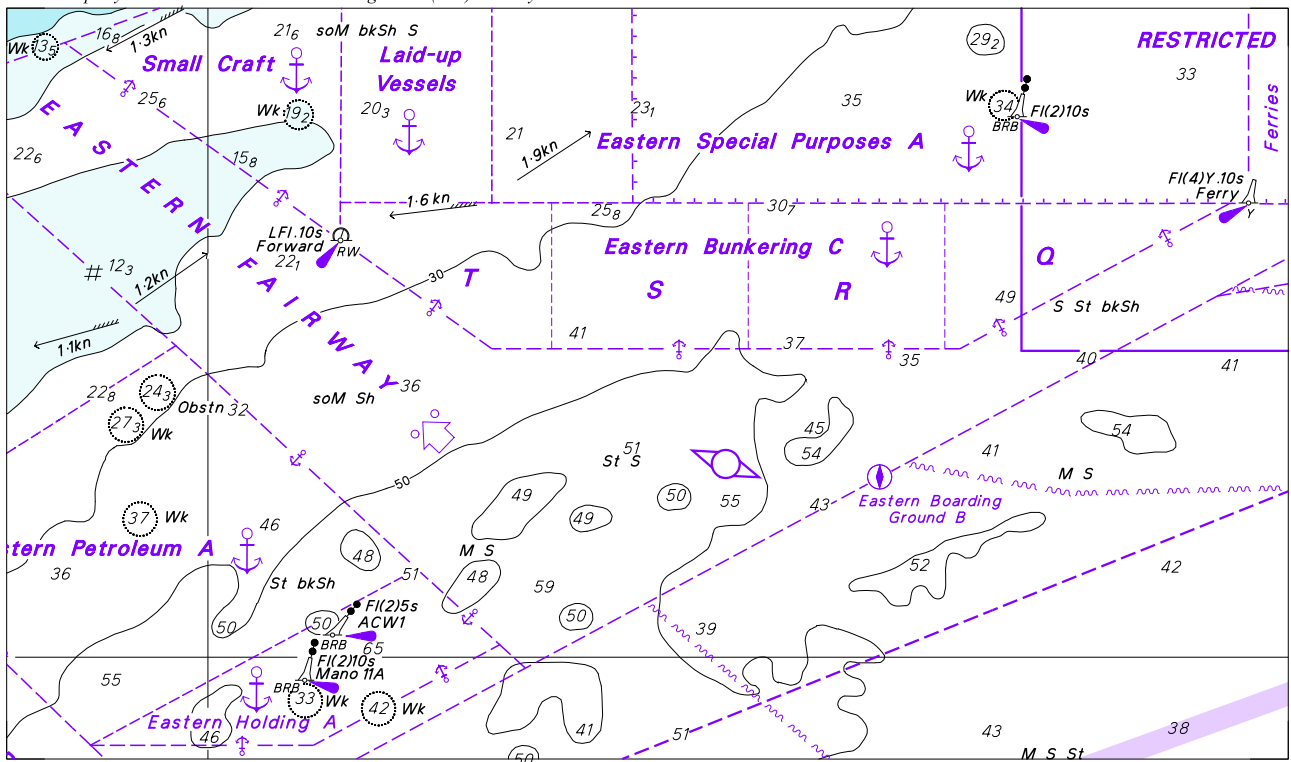
Type of Position Fixing : GPS / DGPS Others :

Type of Echo Sounder :

Name and Signature :

Ship's / Company's tamp :

To accompany Notice to Mariners 5/07. Image Size (mm) 99.3 by 169.5



Block for Chart 502