



## SINGAPOREAN NOTICES TO MARINERS

---

	<b>CONTENT</b>	<b>Page</b>
I	Index of Charts & Publications	121
II	New Publications	127
	Notices to Mariners and Chart Corrections	129
	Temporary and Preliminary Notices	133
III	Navigational Information	134
	Amendments to Publications	135
IV	Reprint of Radio Navigational Warnings	137
V	Reprint of Admiralty Notices to Mariners for Dual Badged Charts	138

---

**The monthly Notices to Mariners contain corrective information affecting charts published by the Hydrographic Department, Maritime and Port Authority of Singapore. The information contained in these Notices should be updated on the charts affected. Notices under Section II apply only to the particular Singaporean Chart(s) indicated.**

---

Mariners are requested to notify the Chief Hydrographer, Maritime and Port Authority of Singapore, immediately on the discovery of new dangers or suspected dangers to navigation and of changes or defects in aids to navigation. See Hydrographic Note on last page.

These notices can be accessed from the MPA webpage:

<http://www.mpa.gov.sg/infocentre/publications/noticesmari.htm>

Copies of these notices can also be obtained free from the Hydrographic Department, Maritime and Port Authority of Singapore or from our Chart Agent, Motion Smith telephone number (65) 62205098.

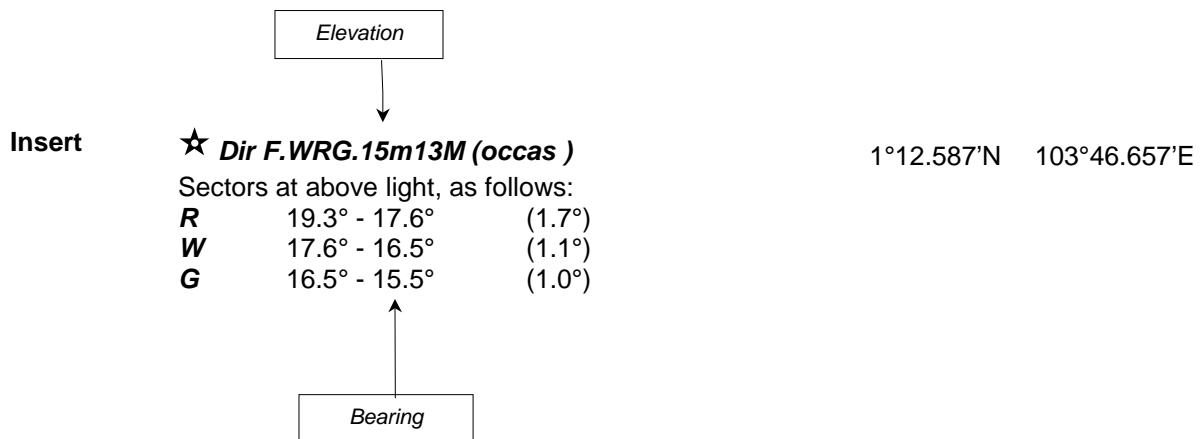
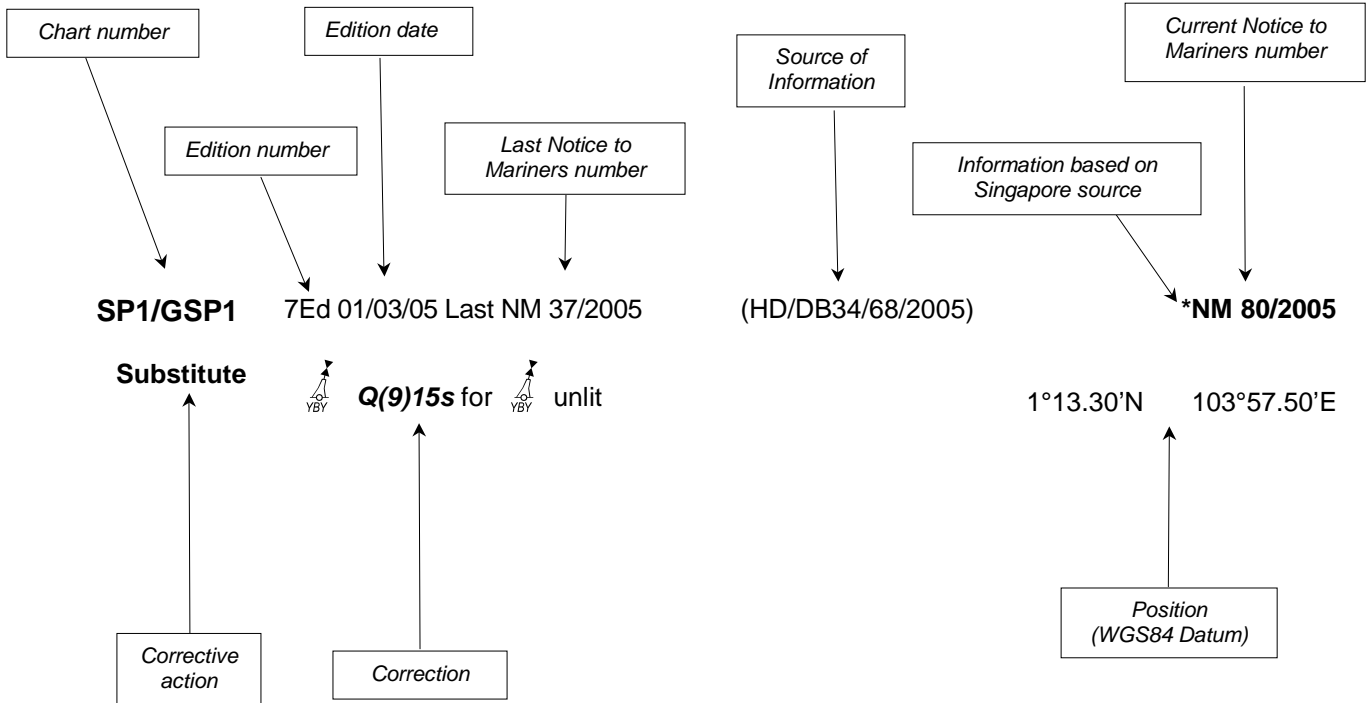
Hydrographic Department  
Maritime and Port Authority of Singapore  
P.O. Box 313  
PSA Building Post Office  
Singapore 911141

Tel : (65) 6375 1550

Fax : (65) 6278 7646

## EXPLANATION OF FORMAT

The elements of a typical chart correction are explained below.



### Notes:

- a) Notice to Mariners number followed by:
  - T** indicates a Temporary Notice (eg. \*NM 80T/2005).
  - P** indicates a Preliminary Notice (eg. \*NM 80P/2005).
- b) Bearings are referred to True Compass in degrees clockwise from 000° to 359°. Bearings related to lights are from seaward.
- c) Heights and elevations are above Mean High Water Springs.

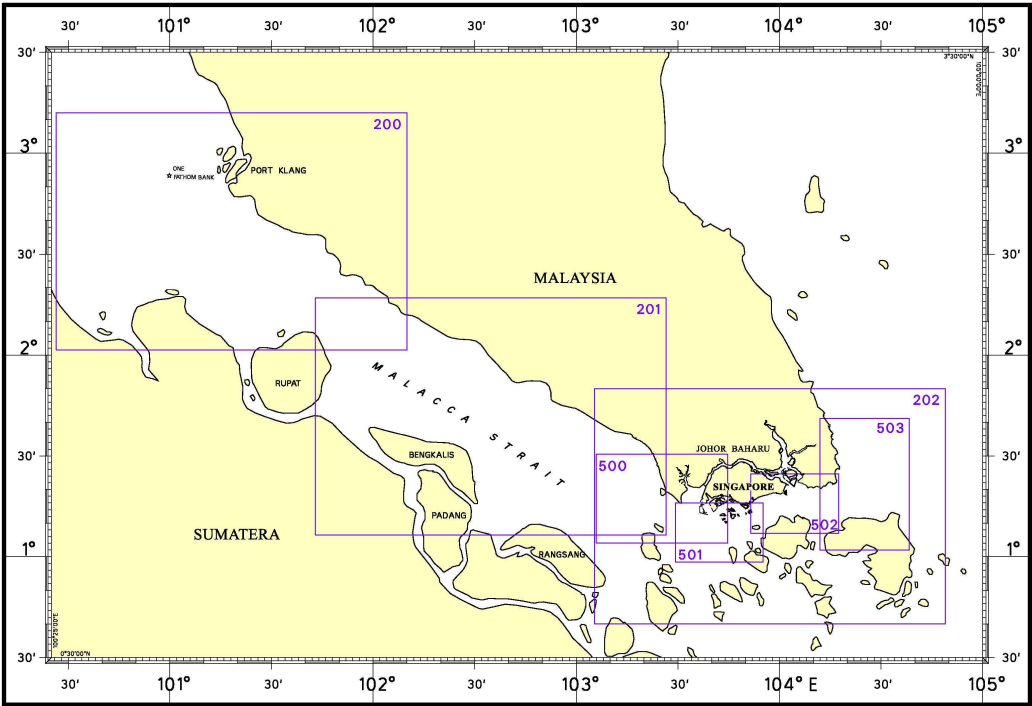
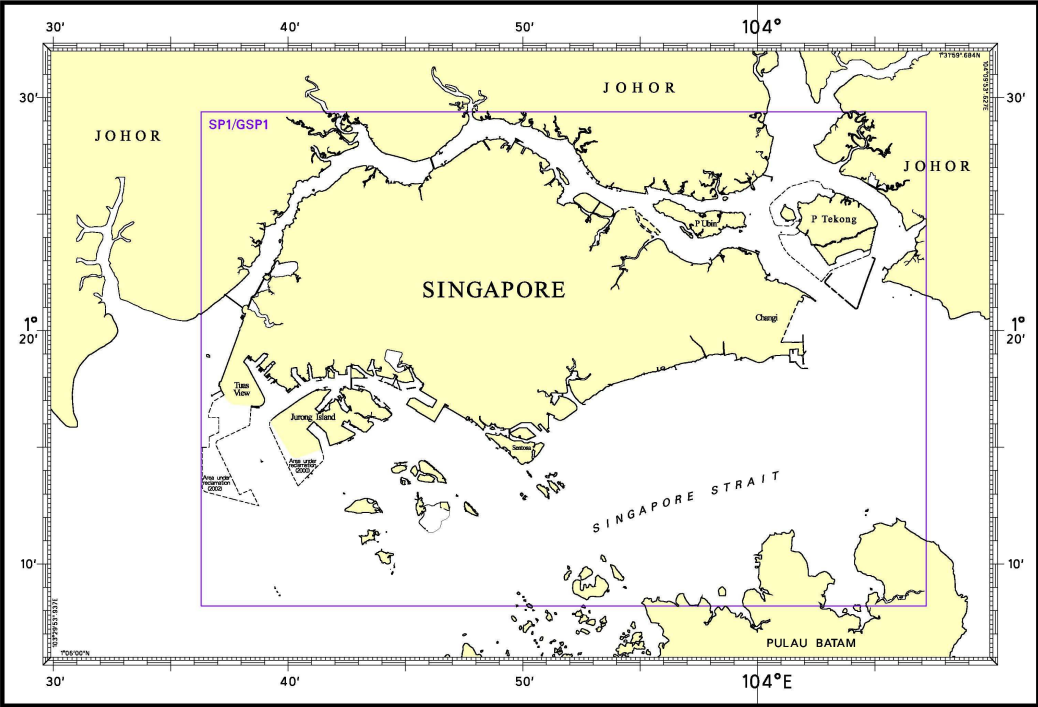
## I

## INDEX OF CHARTS AND PUBLICATIONS

NOTICES	DESCRIPTION	PAGE	NOTICES	DESCRIPTION	PAGE
	Chart Catalogue for Singaporean Charts, Dual Badged Charts and Hydrographic Publications	122	91	202 503	131 132
			92T	200 201	133 133
	New Publication "SINGAPORE PORT INFORMATION - 2006/2007 EDITION"	127	*93	Updating of publication "SINGAPORE PORT INFORMATION - 2006/2007 EDITION"	135
	Release of New Edition SINGAPORE ELECTRONIC NAVIGATIONAL CHART	127			
	New Edition of Dual Badged Chart 4033	128			
*79	Numerical Index to Notices to Mariners of 2006	129			
*80	SP1/GSP1	129			
*81	SP1/GSP1	129			
*82	SP1/GSP1	129			
83	SP1/GSP1 501 502	129 131 132			
84	201	130			
85	201	130			
86	201	130			
87	202	130			
88	202 501	130 131			
89	202 501	130 132			
90	202 500	130 131			

I  
**INDEX OF CHARTS AND PUBLICATIONS**  
**CHART CATALOGUE FOR SINGAPOREAN CHARTS, DUAL BADGED CHARTS AND**  
**HYDROGRAPHIC PUBLICATIONS.**

INDEX OF SINGAPOREAN CHARTS



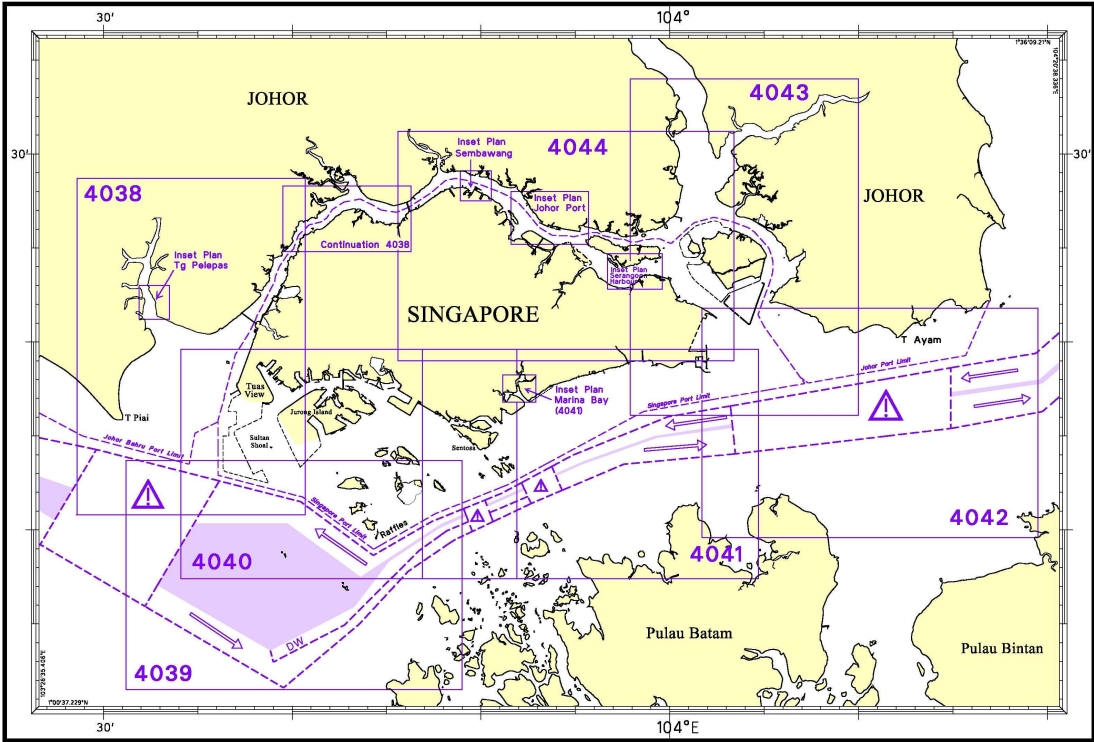
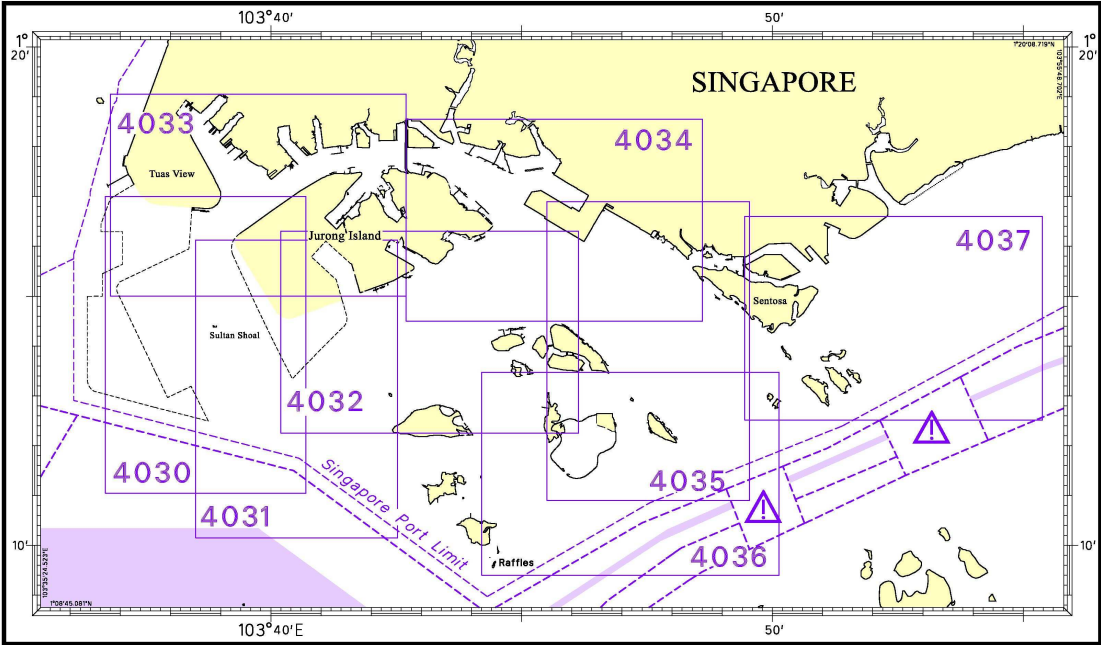
## I

## INDEX OF CHARTS AND PUBLICATIONS

SINGAPOREAN CHARTS CATALOGUE

Chart No.	Title and Charts Limit Positions in WGS 84	Scale 1:	Date Published	Price (Excluding GST) S\$
1	Symbols and Abbreviations used on Singaporean produced Nautical Charts – July 2001	-	-	16.90
Charts for Small Craft	Singapore Strait & Adjacent Waterways	Various	28/01/05	91.00
SP1	Anchorage and Aids to Navigation	60 000	30/03/06	39.00
GSP1	Anchorage and Aids to Navigation (with Area Reference)	60 000	30/03/06	39.00
200	Malacca Strait - Port Klang to Tanjung Keling	200 000	30/11/05	39.00
201	Malacca Strait - Tanjung Keling to Western Entrance of Singapore Strait	200 000	15/09/03	39.00
202	Singapore Strait	200 000	15/11/04	39.00
500	Malacca and Singapore Straits – Pulau Pisang to Raffles Lighthouse	75 000	15/08/05	39.00
501	Singapore Strait – Western Part	50 000	15/09/03	39.00
502	Singapore Strait - Eastern Part	50 000	25/10/05	39.00
503	South China Sea - Eastern Approaches and Entrance to Singapore Strait	75 000	15/09/04	39.00

I  
**INDEX OF CHARTS AND PUBLICATIONS**  
INDEX OF DUAL BADGED CHARTS



## I

## INDEX OF CHARTS AND PUBLICATIONS

DUAL BADGED CHARTS CATALOGUE

Chart No.	Title and Charts Limit Positions In WGS 84	Scale 1:	Date Published
4030	Port of Singapore West Jurong Anchorages and Fairways	10 000	22/01/04 (New Edition Aug 2006)
4031	Port of Singapore South Jurong Island and its Approaches	10 000	22/01/04 (New Edition Aug 2006)
4032	Port of Singapore Sinki Fairway	10 000	22/01/04 (New Edition Aug 2006)
4033	Port of Singapore Tuas Bay, West Jurong Channel and Pesek Basin	10 000	15/06/06
4034	Port of Singapore East Jurong Channel, Pasir Panjang Terminal and West Keppel Fairway	10 000	10/11/05
4035	Port of Singapore Western Anchorages, Jong Fairway and Cruise Bay	10 000	08/09/05
4036	Port of Singapore Raffles Lighthouse to The Sisters	10 000	08/09/05
4037	Port of Singapore Keppel Harbour, Tanjong Pagar Terminal and Approaches	10 000	13/04/06
4038	Johor Strait – Western Part	30 000	17/11//05
4039	Western Approaches to Main Strait	30 000	01/12/05
4040	Tuas View to Pulau Sakijang Bendera (S John's Island)	30 000	01/12/05
4041	Pulau Sebarok to Changi	30 000	01/12/05
4042	Changi to Pulau Mungging	30 000	20/05/04

I  
INDEX OF CHARTS AND PUBLICATIONS

4043	Kuala Johor and Sungai Johor	30 000	26/09/02
4044	Johor Strait - Eastern Part	30 000	26/09/02

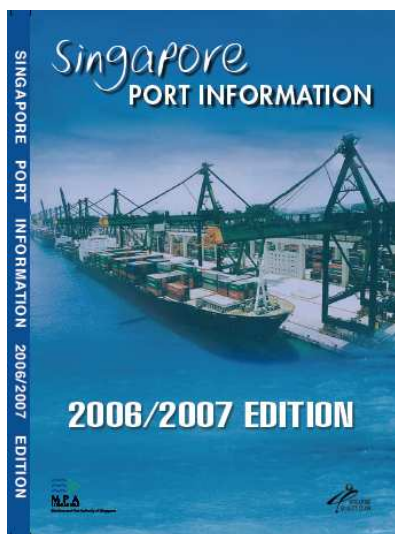
**HYDROGRAPHIC PUBLICATIONS**

Item	Title	Price (Excluding GST) S\$
1	Year 2006 Singapore Tide Tables	20.80
2	Singapore Port Information 2006/2007 Edition	15.60

---

## II NEW PUBLICATIONS

### NEW PUBLICATION



#### SINGAPORE PORT INFORMATION - 2006/2007 EDITION

##### Summary of Publication

This publication contains Port Information such as Routeing System in the Straits of Malacca and Singapore, important Port Marine Circulars and Notices issued by the Port Master, Characteristics of Aids to Navigation, Port Facilities, IALA Maritime Buoyage System and Chart Catalogue.

##### To Whom Will It Be Useful

Mariners, shipping community, port users and other interested users.

##### Frequency/Year of Publication

Biennially

##### Cost of publication

The price of the publication is S\$15.60 (excluding Goods & Services Tax).

##### Order Enquires

Motion Smith, 76 Shenton Way #01-01, Singapore 079119

Tel : (65) 6220 5098  
(After office hours:  
Pager No. 9304 4156, 9304 4159)

Fax : (65) 6225 4902

E-mail : [sales@motsmith.com](mailto:sales@motsmith.com)

Website : <http://www.motsmith.com>

##### Remarks

Information provided in this publication is correct up to the time of printing based on data available at the Hydrographic Department, Maritime and Port Authority of Singapore.

##### Updates

Any updates to this publication which are critical to safe navigation will be promulgated through the monthly Singaporean Notices to Mariners. These notices can be accessed from MPA webpage:

" [www.mpa.gov.sg/homepage/publications/noticesmari.htm](http://www.mpa.gov.sg/homepage/publications/noticesmari.htm)".

### NEW EDITION SINGAPORE ELECTRONIC NAVIGATIONAL CHARTS (ENC)(2006.1) WERE RELEASED ON 2<sup>ND</sup> MAY 2006.

For more information:

Please contact Ms Jenny Goh/Siti at Tel: 6375 1575/6 or visit our website:

<http://www.mpa.gov.sg/homepage/services/enc>

## II NEW PUBLICATIONS

### NEW EDITION OF DUAL BADGED CHART 4033 PUBLISHED ON 15TH JUNE 2006.

Chart Number : 4033  
Title : Port of Singapore – Tuas Bay, West Jurong Channel, Pesek Basin  
Coverage : Lat 1° 15.00' N 1° 19.05' N  
Long 103° 36.80' E 103° 42.70' E  
Scale : 1 : 10 000  
Date Published : 15th June 2006  
Remarks : This new edition contain new survey data covering:  
Temasek Fairway and West Jurong Channel including Benoi Basin, Tanjong Kling  
Basin, East and West Samulun Basin  
The existing chart of the same number published on 22 January 2004 is  
superseded.





Available from : Motion Smith  
76 Shenton Way #01-01  
Singapore 079119  
Tel : (65) 6220 5098  
(After office hours, Pager No.9304 4156, 9304 4159).  
Fax : (65) 6225 4902  
E-mail : sales@motsmith.com  
Internet Web site at: <http://www.motsmith.com>

---








**II**  
**NOTICES TO MARINERS AND CHART CORRECTIONS**

**\*(NM 79/2006) NUMERICAL INDEX TO NOTICES TO MARINERS OF 2006 (1 TO 78)**

CHART NO.	PUBLISHED	YEAR	NOTICE NO.
SP1, GSP1	8Ed 30/03/06	2006	46-47-48-49-50-57-58-59-60-61-62-63
200	3Ed 30/11/05	2006	49-51-64
201	2Ed 15/09/03	2006	2-19-28-29-49-65-66-67-68
202	4Ed 15/11/04	2006	20-30-38-39-40-49-52-53-69-70-71-72-73-74-75
500	4Ed 15/08/05	2006	49
501	3Ed 15/09/03	2006	27-30-31-41-49-61-70-76
502	3Ed 25/10/05	2006	18-20-27-31-32-38-39-40-41-46-50-54-60-61-62-63-76
503	2Ed 15/09/04	2006	-

<b>SP1/GSP1</b>	8Ed 30/03/06 Last NM 63/2006	(HD/HE025/090/2006)	<b>*NM 80/2006</b>
<b>Insert</b>	 <b>Ular 4, Fl.Y.2s8m</b>		1°13.88'N 103°44.61'E
		(HD/HY Code A00105906)	<b>*NM 81/2006</b>
<b>Insert</b>	 <b>Wk</b>		1°13.95'N 103°51.15'E
		(HD/Job No. 35N/2006)	<b>*NM 82/2006</b>
<b>Insert</b>	 <b>Wk</b>		1°15.76'N 103°48.02'E
		(Admiralty Notices 23/2601/2006)	<b>NM 83/2006</b>
<b>Relocate</b>	 <b>No.3, Fl.Y.3s</b> (1°10.60'N, 103°51.86'E)		1°10.60'N 103°51.70'E







**II**  
**NOTICES TO MARINERS AND CHART CORRECTIONS**

<b>201</b>	2Ed 15/09/03 Last NM 68/2006	(Marine Dept. Peninsular Malaysia NTM 37/2006)	<b>NM 84/2006</b>
<b>Insert</b>	 <b>Sungai Duyong, Melaka, Fl(2)5s6m7M</b>		2°10.46'N 102°17.37'E
		(Admiralty Notices 22/2459/2006)	<b>NM 85/2006</b>
<b>Delete</b>	Legend, (exting), at light		1°36.04'N 102°00.02'E
		(Indo/DISHIDROS/ BPI No.18-2006/136/4)	<b>NM 86/2006</b>
<b>Insert</b>	 <b>No.5, Fl.G.6s4M with Radar Reflector</b>		1°35.80'N 101°54.40'E
<b>Delete</b>	 <b>No.5, Fl.G.6s</b>		1°33.64'N 101°54.79'E
-----			
<b>202</b>	4Ed 15/11/04 Last NM 75/2006	(Indo/DISHIDROS/ BPI No.18-2006/136/1)	<b>NM 87/2006</b>
<b>Substitute</b>	★ <b>Fl.8s13m10M</b> for ★ Fl.8s10m (Previous NM 6/71/2006 is superseded)		0°44.79'N 103°35.15'E
		(Indo/DISHIDROS/ BPI No.25-2006/187)	<b>NM 88/2006</b>
<b>Insert</b>	 <b>Fl.Y.3s</b>		1°00.33'N 103°30.50'E
		(Indo/DISHIDROS/ BPI No.25-2006/188)	<b>NM 89/2006</b>
<b>Insert</b>	 <b>Fl.Y.3s</b>		1°03.05'N 103°32.08'E
<b>Delete</b>	 Fl.Y.3s (Previous NM 6/44/2005 is superseded)		1°03.03'N 103°32.05'E
		(Indo/DISHIDROS/ BPI No.25-2006/189)	<b>NM 90/2006</b>
<b>Insert</b>	 <b>Fl.Y.2s</b>		1°06.37'N 103°24.47'E


## II NOTICES TO MARINERS AND CHART CORRECTIONS

(Admiralty Notices 21/2369/2006)



**NM 91/2006**

Insert	 <b>black and white pillar buoy</b>	1°01.65'N	104°11.90'E
Insert	 <b>Obstn</b>	0°54.10'N	104°24.30'E
Insert	 <b>black and white pillar buoy</b>	0°51.80'N	104°24.76'E
Insert	 <b>Fl(3)G.8s</b>	0°51.68'N	104°20.08'E
Insert	 <b>Fl.3s</b>	0°51.38'N	104°24.28'E
Substitute	Depth <b>1<sub>3</sub></b> for depth <b>2<sub>1</sub></b>	1°03.36'N	104°13.02'E
Substitute	Depth <b>15<sub>3</sub></b> for depth <b>18</b>	1°02.52'N	104°11.60'E
Delete	 <b>Q(3)10s</b>	0°51.30'N	104°23.99'E

---

<b>500</b>	4Ed 15/08/05 Last NM 49/2006	(Indo/DISHIDROS/ BPI No.25-2006/189)	<b>NM 90/2006</b>
Insert	 <b>Fl.Y.2s5M</b>	1°06.37'N	103°24.47'E



---

<b>501</b>	3Ed 15/09/03 Last NM 76/2006	(Admiralty Notices 23/2601/2006)	<b>NM 83/2006</b>
Relocate	 <b>No.3, Fl.Y.3s</b> (1°10.60'N, 103°51.86'E)	1°10.60'N	103°51.70'E
		(Indo/DISHIDROS/ BPI No.25-2006/187)	<b>NM 88/2006</b>
Insert	 <b>Fl.Y.3s5M</b>	1°00.33'N	103°30.50'E


**II**  
**NOTICES TO MARINERS AND CHART CORRECTIONS**

(Indo/DISHIDROS/  
BPI No.25-2006/188)

**NM 89/2006**

<b>Insert</b>	 <b>Fl.Y.3s5M</b>	1°03.05'N	103°32.08'E
<b>Delete</b>	 Fl.Y.3s (Previous NM 6/44/2005 is superseded)	1°03.03'N	103°32.05'E

---

<b>502</b>	3Ed 25/10/05 Last NM 76/2006	(Admiralty Notices 23/2601/2006)	<b>NM 83/2006</b>
<b>Relocate</b>	 <b>No.3, Fl.Y.3s</b> (1°10.60'N, 103°51.86'E)	1°10.60'N	103°51.70'E

---

<b>503</b>	2Ed 15/09/04 Last NM 105/2005	(Admiralty Notices 21/2369/2006)	<b>NM 91/2006</b>
<b>Substitute</b>	Depth <i>1<sub>3</sub></i> for depth <i>2<sub>1</sub></i>	1°03.34'N	104°13.13'E

---



**III**  
**NAVIGATIONAL INFORMATION**

Nil

### III AMENDMENTS TO PUBLICATIONS

**\*(NM 93/2006) UPDATING OF PUBLICATION “SINGAPORE PORT INFORMATION 2006/2007 EDITION”**

1 Page 122 – SINKI FAIRWAY (Cont/)

Insert the following:

Name of Beacon / Buoy	Position Lat. N Long. E Deg Min	Structure Colour & Shape	Light Characteristic	Owner
<b>Ular 4</b>	<b>01 13.88 103 44.61</b>	<b>Yellow Trestle</b>	<b>Fl.Y.2s8m</b>	<b>Penta-Ocean /Koon/Dredging Int'l/Boskalis/ Ham JV</b>

Source: HD/HE025/090/2006

2 Page 147 - Item 7

PASIR PANJANG TERMINAL (PSA Corporation Ltd) (1°17.2'N, 103°46.1'E)

	Delete	Insert
Berth	Depth Alongside (Year Surveyed)	Depth Alongside (Year Surveyed)
P01	15.2m (1998)	<b>15.0m (2005)</b>
P02	15.2m (1998)	<b>15.1m (2005)</b>
P03	15.0m (1998)	<b>15.0m (2005)</b>
P04	15.2m (1998)	<b>14.8m (2005)</b>
P05	15.1m (1998)	<b>15.0m (2005)</b>

Source: HD/HY Codes C00101306 & C00101406

3 Page 147 - Item 7

PASIR PANJANG TERMINAL (PSA Corporation Ltd) (1°17.2'N, 103°46.1'E)

Insert the following:

Berth	Length of Berth	Depth Alongside (Year Surveyed)	Controlling Depth In Approaches
<b>P07</b>	<b>326m</b>	<b>14.3m (2006)</b>	-

Source: HD/HY Codes C00104706

**III**  
**AMENDMENTS TO PUBLICATIONS**

4 Page 156 - Item 31

SENOKO FISHING PORT (AGRI-FOOD AND VETERINARY AUTHORITY) (1°27.8'N, 103°47.5'E)

	Delete	<i>Insert</i>
Berth	Depth Alongside (Year Surveyed)	Depth Alongside (Year Surveyed)
Jetty	8.8m (1998)	<b><i>7.1m (2006)</i></b>

Source: HD/HY Codes M00100906

**IV**  
**REPRINT OF RADIO NAVIGATIONAL WARNINGS**

Nil

**V**  
**REPRINT OF ADMIRALTY NOTICES TO MARINERS**  
**FOR DUAL BADGED CHARTS**

**2332/06 \* SINGAPORE — Jurong Island — Banyan Basin — Wreck.**

Source: Maritime and Port Authority of Singapore DBNM12/06

**Chart 4031** [previous update 509/06 ] WGS84 DATUM

Insert



1° 15' .044N., 103° 41' .631E.

**Chart 4032** [previous update 2183/06 ] WGS84 DATUM

Insert



1° 15' .044N., 103° 41' .631E.

**Chart 4040** [previous update 2185/06 ] WGS84 DATUM

Insert



1° 15' .04N., 103° 41' .63E.

**2601/06 \* SINGAPORE STRAIT — Main Strait — Batu Berhanti West-south-westwards — Buoy.**

Source: Indonesian Hydrographic Office

**Chart 4040** [previous update 2332/06 ] WGS84 DATUM

Move



*Fl.Y.3s No 3* from:

1° 10' .60N., 103° 51' .86E.

to:

1° 10' .60N., 103° 51' .70E

**Chart 4041** [previous update 2186/06 ] WGS84 DATUM

Move



*Fl.Y.3s No 3* from:

1° 10' .60N., 103° 51' .86E.

to:

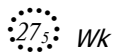
1° 10' .60N., 103° 51' .70E



**V**  
**REPRINT OF ADMIRALTY NOTICES TO MARINERS**  
**FOR DUAL BADGED CHARTS**

**Chart 4035** [previous update 2183/06] WGS84 DATUM

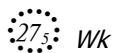
Insert



1° 15' .911N., 103° 45' .649E.

**Chart 4040** [previous update 2602/06] WGS84 DATUM

Insert



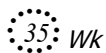
1° 15' .91N., 103° 45' .65E.

**2605/06 \* SINGAPORE— Singapore Island – Changi East Southwards – Wreck.**

Source: Maritime and Port Authority of Singapore DBNM 19/06

**Chart 4041** [previous update 2601/06] WGS84 DATUM

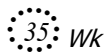
Insert



1° 17'.08N., 104° 01' .22 E.

**Chart 4043** [previous update 2184/06] WGS84 DATUM

Insert



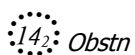
1° 17'.08N., 104° 01'.22 E.

**2606/06 \* SINGAPORE - Singapore Island – Kuala Johor - Obstruction.**

Source: Maritime and Port Authority of Singapore DBNM 20/06

**Chart 4043** [previous update 2605/06] WGS84 DATUM

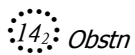
Insert



1° 21' .86N., 104° 02'.70E.

**Chart 4044** [previous update 1338/06] WGS84 DATUM

Insert



1° 21' .86N., 104° 02'.70E.



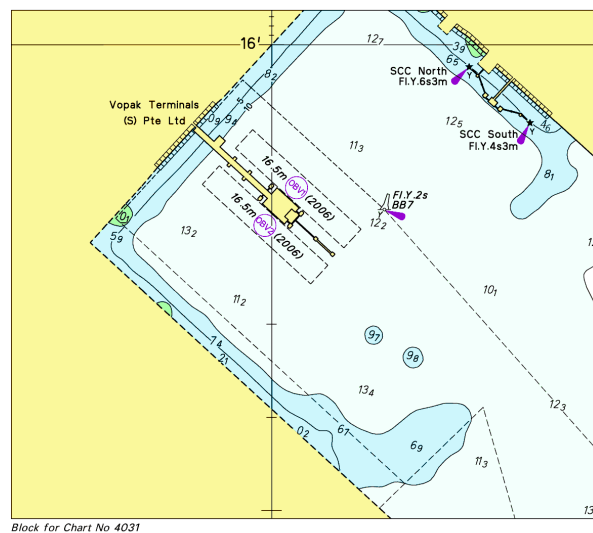
**V**  
**REPRINT OF ADMIRALTY NOTICES TO MARINERS**  
**FOR DUAL BADGED CHARTS**

**2784/06 \* SINGAPORE — Singapore Island – Changi East – North-eastwards – Depth.**  
 Source: UK Hydrographic Office

**Chart 4044** [previous update 2606/06] WGS84 DATUM

Insert depth 9<sub>1</sub> enclosed by 10m contour 1° 19'.93N., 104° 02' .56E.

Note: 2602/06\* - Chart 4031 – accompanying block  
 This block correction is for illustration only. The actual block correction should be obtained from the Admiralty Notices to Mariners.





**MPA ELECTRONIC NAVIGATIONAL CHARTS (ENC) DISTRIBUTORS**

Please approach any of the appointed distributors to purchase the Singapore ENC.

<b>PERSON TO CONTACT</b>	<b>ADDRESS</b>	<b>TELEPHONE/FAX NO./EMAIL/WEBSITE</b>
Mr Chong Chee Meng General Manager	DPM (Singapore) Pte Ltd 1 Maritime Square, #09-72 Harbour Front Centre, Singapore 099253	Tel. No.: +65 6270 4060 Fax No.: +65 6276 3858 Email: <a href="mailto:sales@dpmsingapore.com.sg">sales@dpmsingapore.com.sg</a> Website: <a href="http://www.dpmsingapore.com.sg">http://www.dpmsingapore.com.sg</a>
Ms Shirley Koh	Kelvin Hughes(S) Pte Ltd 8 Pandan Avenue #02-00, Singapore 609384	Tel. No.: +65 6545 9880 ext.12 Fax No.: +65 6545 8892 Email: <a href="mailto:shirley.koh@khsing.com">shirley.koh@khsing.com</a> Website: <a href="http://www.kelvinhughes.co.uk">http://www.kelvinhughes.co.uk</a>
Mr Philip Loh Sales Manager	Motion Smith 76 Shenton Way #01-01, Singapore 079119	Tel. No.: +65 6220 5098 Fax No.: +65 6225 4902 Email: <a href="mailto:sales@motsmith.com">sales@motsmith.com</a> Website: <a href="http://www.motsmith.com">http://www.motsmith.com</a>
Mr Choy Kum Weng Manager	Vector Services Pte Ltd 2 Maritime Square #04-12B SPI Building, Singapore 099255	Tel. No.: +65 6278 7212 Fax No.: +65 6278 7212 Email: <a href="mailto:kwchoy@pacific.net.sg">kwchoy@pacific.net.sg</a>
Mr Looi Keen Wai Regional Sales Manager	Transas Marine Pacific Pte Ltd 750C Chai Chee Road, Technopark@Chai Chee, #04-07 Singapore 469003	Tel. No.: +65 6443 3061 Fax No.: +65 6443 3025 Email: <a href="mailto:looi@transas.com.sg">looi@transas.com.sg</a> Website: <a href="http://www.transas.com.sg">www.transas.com.sg</a>
Mr George Arts President	Marine Press of Canada 640 Rue St-Paul Ouest, Suite 300 Montreal (QC) Canada, H3C1L9	Tel. No.: (514) 866-8342 Fax No.: (514) 866-9050 Email: <a href="mailto:sales@marinepress.com">sales@marinepress.com</a> Website: <a href="http://www.marinepress.com">www.marinepress.com</a>
Mr Thomas Wilde Superintendent	HanseNautic GmbH Bade & Hornig, Eckardt & Messtorff Herrengaben 31 D-20459 Hamburg, Germany	Tel. No.: +49 40 374 811-32 Fax No.: +49 40 366 400 Email: <a href="mailto:info@HanseNautic.com">info@HanseNautic.com</a> Website: <a href="http://www.HanseNautic.com">http://www.HanseNautic.com</a>
Mr Daniel Schwarzwaelder Sales Manager	SevenCs AG + Co. KG Ruhrstrasse 90, D-22761 Hamburg, Germany	Tel. No.: +49 40 853 58 6940 Fax No.: +49 40 853 58 6949 Email: <a href="mailto:sales@chartworld.com">sales@chartworld.com</a> Website: <a href="http://www.sevencs.com">http://www.sevencs.com</a>
Mr K. Shimiz ENC Manager	Japan Hydrographic Association ENC Service Division 5-3-3 Tsukiji, Chuo-ku Tokyo 104-0045, Japan	Tel. No.: +81 3 3543 0752 Fax No.: +81 3 3543 0695 Email: <a href="mailto:enc-support@jha.jp">enc-support@jha.jp</a> Website: <a href="http://www.jha.jp.com">http://www.jha.jp.com</a>
Mr Jester-Kim Foreign Business Department Manager	E_MLX Co. Ltd Ssangyong Research No.2 Lab Sinseong-Dong 100 Yusong-Gu, Daejoen 305-804, Korea (ROK)	Tel. No.: +82 42 865 1893 Fax No.: +82 42 865 1884 Email: <a href="mailto:Jester-kim@emlx.co.kr">Jester-kim@emlx.co.kr</a>
Mr C G Kim	Korean Ocean Development Co. Ltd 2ND Fl, Dongbang Bldg, 25-4, 4 Ga Jungang-Dong, Jung-Gu, Busan, South Korea	Tel. No.: +82 514 66 0760 Fax No.: +82 514 65 9345 Email: <a href="mailto:sales@chartkorea.com">sales@chartkorea.com</a> Website: <a href="http://chartkorea.com">http://chartkorea.com</a>
Mr Kjell Nodland	C-Map Norway A/S P.O Box 212 , N-4371 Egersund, Norway	Tel No.: +47 514 64 700 Fax No: +47 514 64 701 Email: <a href="mailto:market@c-map.no">market@c-map.no</a> Website: <a href="http://www.c-map.no">http://www.c-map.no</a>

Ms Marianne Barstad	PRIMAR STAVANGER Lervigsveien 36, P.O Box 60, N-4001 Stavanger, Norway	Tel. No.: +47 51 93 9500 Fax No.: +47 51 93 9501 Email: <a href="mailto:sales@primar.org">sales@primar.org</a> Website: <a href="http://www.primar-stavanger.org">http://www.primar-stavanger.org</a>
Mr Roar Moe International Marketing Coordinator	Maritime Information System AS (MARIS) Danholmen 25, No.3115 Tonsberg, Norway	Tel. No.: +47 33 30 42 50 Fax No.: +47 33 30 42 51 Email: <a href="mailto:roar.moe@maris.no">roar.moe@maris.no</a> Website: <a href="http://www.maris.no">http://www.maris.no</a>
Mr Andy Criddle Regional Sales Manager	United Kingdom Hydrographic Office Admiralty Way, Taunton, Somerset TA1 2DN United Kingdom	Tel. No.: +44 (0)1823 337900 Fax No.: +44 (0)1823 284077 Email: <a href="mailto:vargroup@ukho.gov.uk">vargroup@ukho.gov.uk</a> & <a href="mailto:andrew.criddle@ukho.gov.uk">andrew.criddle@ukho.gov.uk</a> Website: <a href="http://www.ukho.gov.uk">www.ukho.gov.uk</a>

---

**CHART AGENT FOR MARITIME AND PORT AUTHORITY OF SINGAPORE (MPA) PUBLICATIONS**

**Agent's name** : Motion Smith  
**Address** : 76 Shenton Way # 01-01  
Singapore 079119  
**Telephone** : (65) 6220 5098  
: (After Office hours: Pager No. 9304 4156, 9304 4159)  
**Fax No.** : (65) 6225 4902  
**E-mail** : [sales@motsmith.com](mailto:sales@motsmith.com)  
**Website** : <http://www.motsmith.com>

---

## HYDROGRAPHIC NOTE - Instructions

1. Mariners are requested to notify the Chief Hydrographer, Maritime and Port Authority of Singapore, when new or suspected dangers to navigation are discovered, changes are observed in aids to navigation or where corrections to nautical publications may be necessary. Reports which cannot be confirmed or are lacking in certain details should not be withheld.
2. Any ambiguities of time, positioning and depth should be stressed and any firm expectation of being able to check the information provided on a following voyage should be mentioned.
3. Mariners using satellite position fixing systems, eg. GPS, should provide details of equipment and datum used (where applicable). Where bearings (true or magnetic) are taken visually or by radar to fix a position, it should include more than two objects in order to provide a check on its accuracy. A position may also be defined by bearing and distance from a conspicuous object eg. beacon, lighthouse etc.
4. The note should include a tracing or a digital image of the chart used and the details should be clearly marked.
5. Echo sounders frequently register greater depths than the advertised maximum depth for the equipment, eg. a trace appearing at 50 metres may be in fact be 550 metres or even 1050 metres for equipment whose maximum depth is 500 metres. Erroneous depths caused by 2nd transmission error can usually be recognised by the following:
  - (a) the tracing being weaker than normal for the depth registered,
  - (b) the trace appearing to pass through the transmission line,
  - (c) the feathery nature of the trace.
6. An acknowledgement of receipt will be sent. When a Notice to Mariners is issued, the sender's vessel or name is quoted as the source unless the same information is also received in foreign Notices to Mariners.
7. Reports of shoals, uncharted dangers and defects in aids to navigation may also be made to the appropriate Singapore Port Operations Control Station on VHF Channels 10, 12, 14, 68 or 73.

**HYDROGRAPHIC NOTE**

To:

Chief Hydrographer  
Hydrographic Department  
Maritime and Port Authority of Singapore  
460 Alexandra Road #20-00 PSA Building  
Singapore 119963

Tel: (65) 6375 1550 or (65) 6375 1551  
Fax: (65) 6278 7646  
E-mail: [hydrographic@mpa.gov.sg](mailto:hydrographic@mpa.gov.sg)

**Sender's Contact Details:**

Date: .....  
Name of Vessel: .....  
Address of Sender: .....  
Tel: . ..... Fax: .....  
E-mail: .....

**Nature of Observation:**

General Location: .....  
Subject: .....  
Position: Lat ..... Long .....  
Charts Used: .....  
Date & Time of Observation: .....  
Details: .....  
.....  
.....  
Attachment: .....

**Equipment Used:**

GPS / DGPS  
Type of Position Fixing: ..... Others: .....  
Type of Echo Sounder: .....

Name and Signature: .....

Ship' s / Company's stamp: .....