



SINGAPOREAN NOTICES TO MARINERS

	CONTENT	Page
I	Index of Charts & Publications	123
II	New Publications	129
	Notices to Mariners and Chart Corrections	132
	Temporary and Preliminary Notices	134
III	Navigational Information	135
	Amendments to Publications	136
IV	Reprint of Radio Navigational Warnings	137
V	Reprint of Admiralty Notices to Mariners for Dual Badged Charts	138

The monthly Notices to Mariners contain corrective information affecting charts published by the Hydrographic Department, Maritime and Port Authority of Singapore. The information contained in these Notices should be updated on the charts affected. Notices under Section II apply only to the particular Singaporean Chart(s) indicated.

Mariners are requested to notify the Chief Hydrographer, Maritime and Port Authority of Singapore, immediately on the discovery of new dangers or suspected dangers to navigation and of changes or defects in aids to navigation. See Hydrographic Note on back page.

The monthly Singaporean Notices to Mariners can be accessed directly from the MPA website:

<http://www.mpa.gov.sg/> > Circulars & Notices > Spore Notices to Mariners

or

<http://www.mpa.gov.sg/infocentre/publications/noticesmari.htm>

This service is offered free of charge.

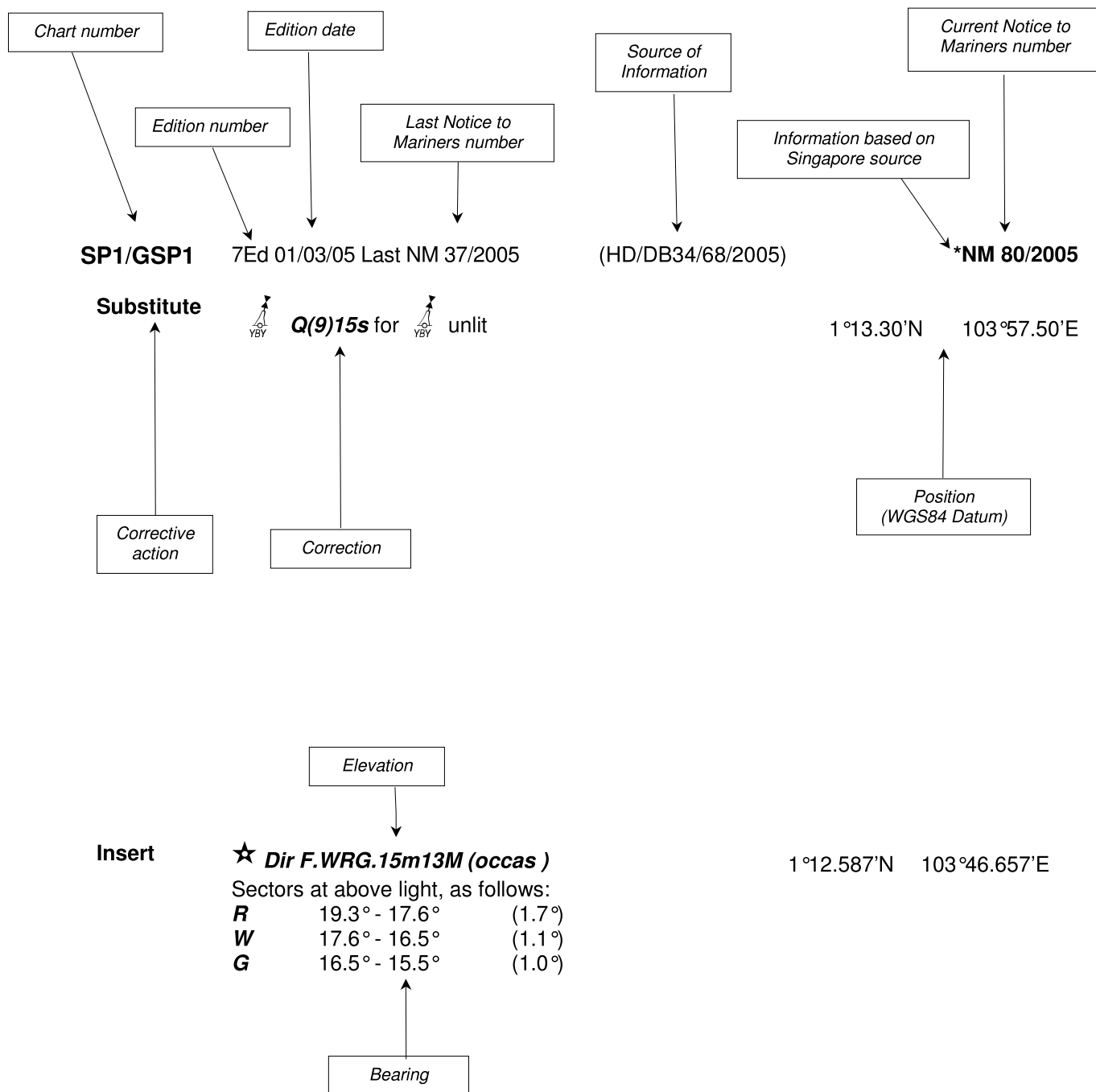
Hydrographic Department
Maritime and Port Authority of Singapore
460 Alexandra Road PSA Building #20-00
Singapore 119963

Tel : (65) 6375 1227

Fax : (65) 6278 7646

EXPLANATION OF FORMAT

The elements of a typical chart correction are explained below.



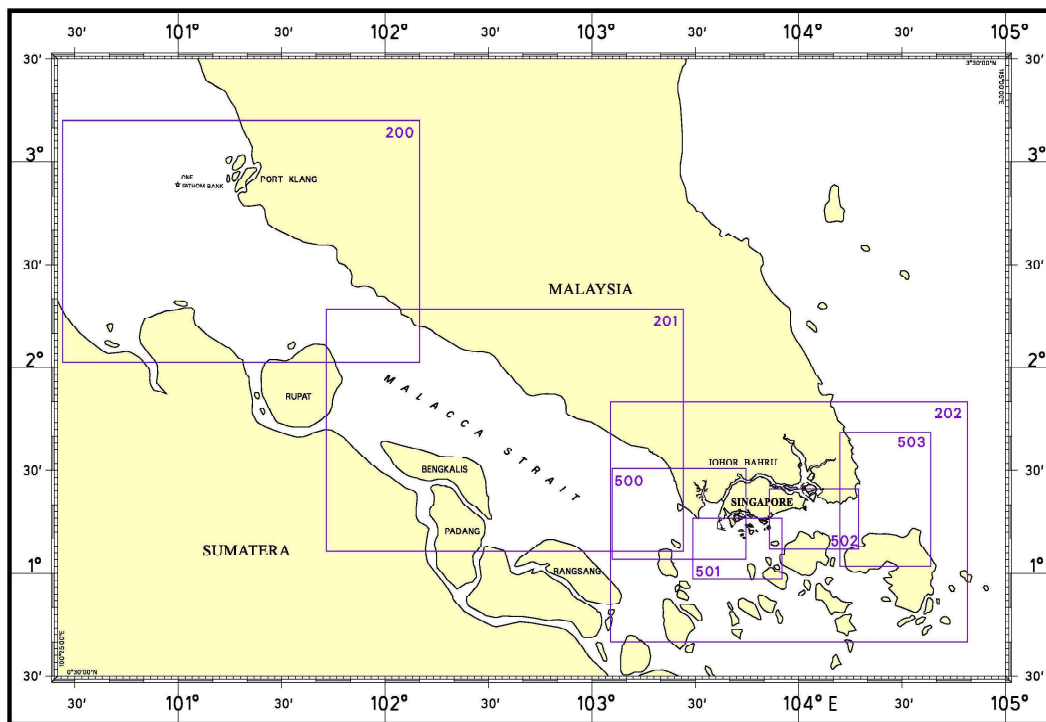
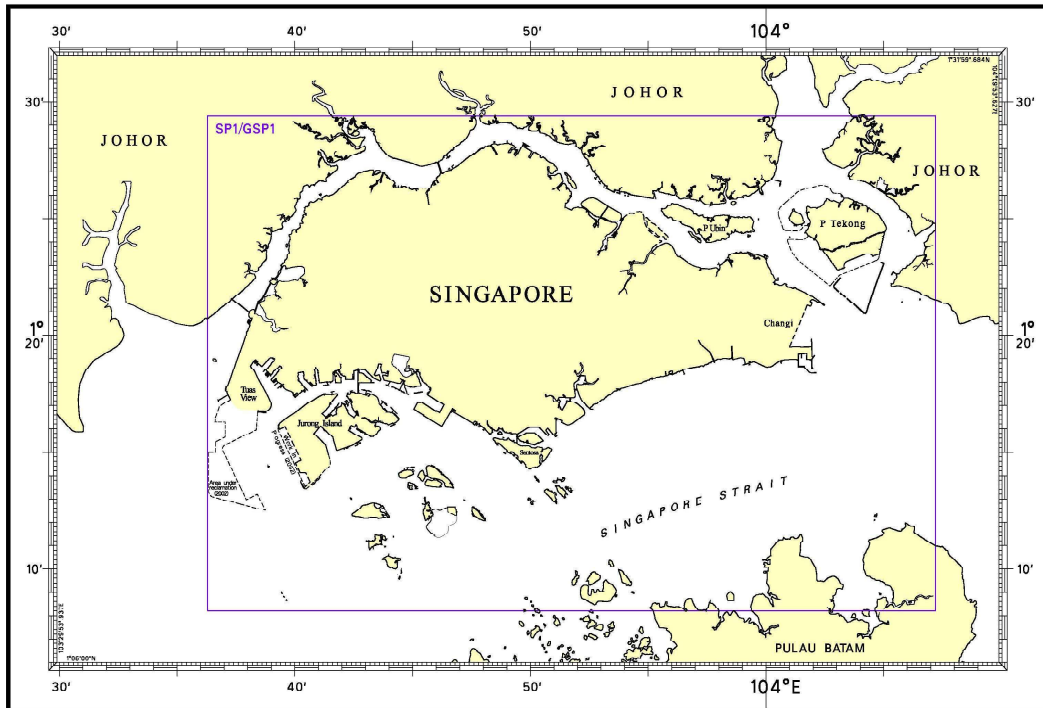
Notes:

- a) Notice to Mariners number followed by:
 - T** indicates a Temporary Notice (eg. ***NM 80T/2005**).
 - P** indicates a Preliminary Notice (eg. ***NM 80P/2005**).
- b) Bearings are referred to True Compass in degrees clockwise from 000° to 359°. Bearings related to lights are from seaward.
- c) Heights and elevations are above Mean High Water Springs.

I
INDEX OF CHARTS AND PUBLICATIONS

NOTICES	DESCRIPTION	PAGE	NOTICES	DESCRIPTION	PAGE
	INDEX OF SINGAPOREAN CHARTS	124			
	INDEX OF DUAL BADGED CHARTS	126			
	New Edition SINGAPOREAN CHARTS	129			
	New Edition DUAL BADGED CHARTS	130			
*57	Numerical Index to Notices to Mariners of 2007	132			
*58	SP1/GSP1	132			
*59	SP1/GSP1	132			
	500	132			
	501	132			
60	200	132			
*61	502	133			
*62	Port Marine Notices	135			
*63	Updating of Publication "SINGAPORE PORT INFORMATION 2006/2007 EDITION"	136			

I
INDEX OF CHARTS AND PUBLICATIONS
INDEX OF SINGAPOREAN CHARTS



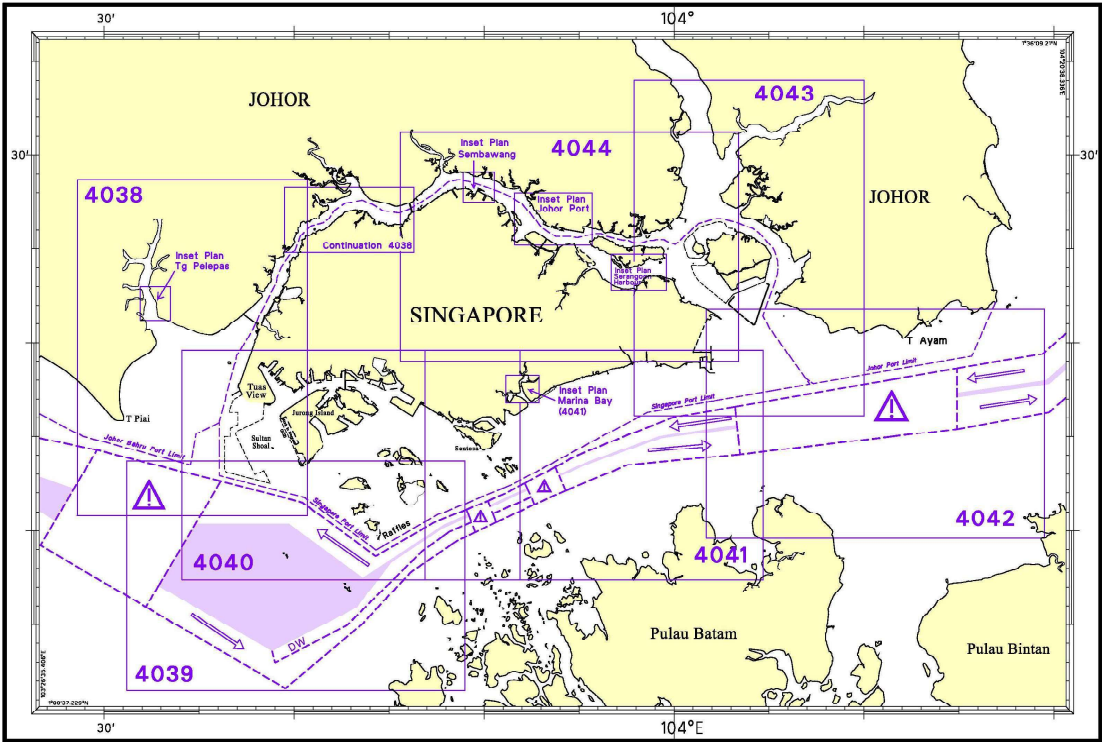
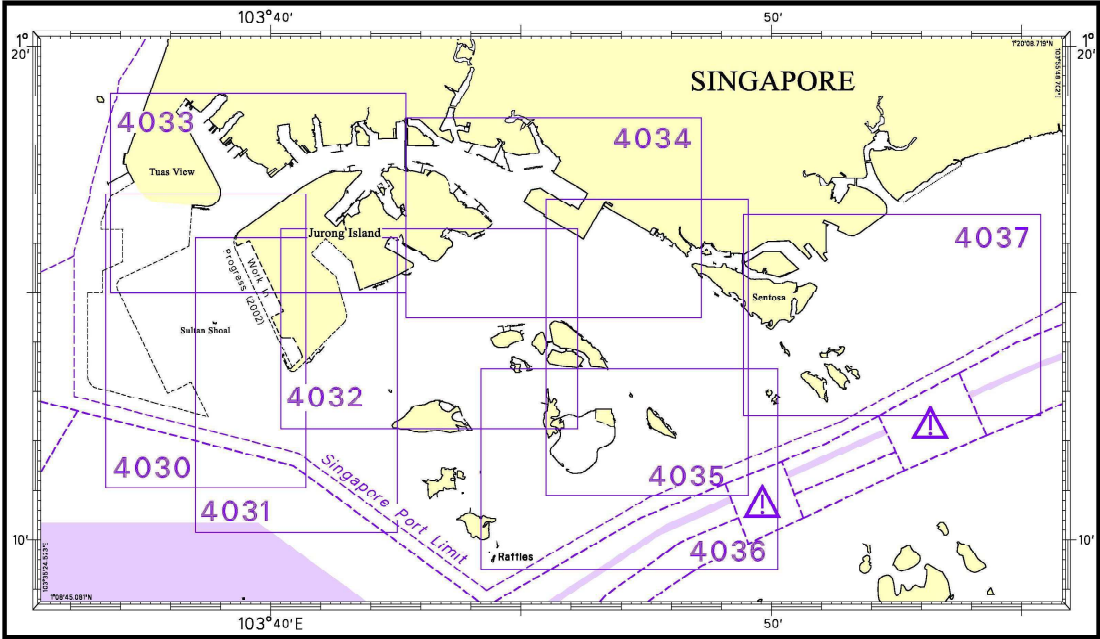
Notes:
 Updated SINGAPOREAN Charts (excluding Charts SP1/GSP1, 200, 201 & 503) are available through our Print On Demand (POD) chart service and can be obtained from our authorised Chart Agents: Motion Smith and Hong Yunn Sea Professional Co., Ltd.

I
INDEX OF CHARTS AND PUBLICATIONS

SINGAPOREAN CHARTS CATALOGUE

Chart No.	Title and Charts Limit Positions in WGS 84	Scale 1:	Date Published of Latest Edition	Price (Excluding GST) S\$
1	Symbols and Abbreviations used on Singaporean produced Nautical Charts – July 2001	-	-	16.90
Charts for Small Craft	Singapore Strait & Adjacent Waterways	Various	31/01/07	91.00
SP1	Anchorage and Aids to Navigation	60 000	03/01/07	39.00
GSP1	Anchorage and Aids to Navigation (with Area Reference)	60 000	03/01/07	39.00
200	Malacca Strait - Port Klang to Tanjung Keling	200 000	30/11/05	39.00
201	Malacca Strait - Tanjung Keling to Western Entrance of Singapore Strait	200 000	15/09/03	39.00
202	Singapore Strait	200 000	19/10/06	39.00
500	Malacca and Singapore Straits – Pulau Pisang to Raffles Lighthouse	75 000	15/08/05	39.00
501	Singapore Strait – Western Part	50 000	21/09/06	39.00
502	Singapore Strait - Eastern Part	50 000	25/10/05	39.00
503	South China Sea - Eastern Approaches and Entrance to Singapore Strait	75 000	15/09/04	39.00

I
INDEX OF CHARTS AND PUBLICATIONS
INDEX OF DUAL BADGED CHARTS



I
INDEX OF CHARTS AND PUBLICATIONS

DUAL BADGED CHARTS CATALOGUE

Chart No.	Title and Charts Limit Positions In WGS 84	Scale 1:	Date Published of Latest Edition
4030	Port of Singapore West Jurong Anchorages and Fairways	10 000	10/08/06
4031	Port of Singapore South Jurong Island and its Approaches	10 000	10/08/06
4032	Port of Singapore Sinki Fairway	10 000	10/08/06
4033	Port of Singapore Tuas Bay, West Jurong Channel and Pesek Basin	10 000	15/06/06
4034	Port of Singapore East Jurong Channel, Pasir Panjang Terminal and West Keppel Fairway	10 000	10/11/05
4035	Port of Singapore Western Anchorages, Jong Fairway and Cruise Bay	10 000	08/09/05
4036	Port of Singapore Raffles Lighthouse to The Sisters	10 000	08/09/05
4037	Port of Singapore Keppel Harbour, Tanjong Pagar Terminal and Approaches	10 000	24/05/07
4038	Johor Strait – Western Part	30 000	17/08/06
4039	Western Approaches to Main Strait	30 000	29/03/07
4040	Tuas View to Pulau Sakijang Bendera (S. John's Island)	30 000	21/09/06
4041	Pulau Sebarok to Changi	30 000	24/05/07
4042	Changi to Pulau Mungging	30 000	20/05/04

I
INDEX OF CHARTS AND PUBLICATIONS

4043	Kuala Johor and Sungai Johor	30 000	26/09/02
4044	Johor Strait - Eastern Part	30 000	22/02/07

HYDROGRAPHIC PUBLICATIONS

Item	Title	Price (Excluding GST) S\$
1	Year 2007 Singapore Tide Tables	20.80
2	Singapore Port Information 2006/2007 Edition	15.60

II NEW PUBLICATIONS

NEW EDITION SINGAPOREAN CHARTS PUBLISHED ON 19 JULY 2007

Chart No. : SP1
Title : Anchorages and Aids to Navigation
Coverage : Lat 1° 08.20' N 1° 29.40' N
Long 103° 36.10' E 104° 07.20' E
Scale : 1 : 60 000
Date Published : 19 July 2007
Size of chart : 973.9 x 651.2 mm
Remarks : This new edition includes new topography, working area, submarine cables and depth contours covering the entire chart. This new edition supersedes the earlier edition published on 3 January 2007.

Chart No. : GSP1
Title : Anchorages and Aids to Navigation (with area reference)
Coverage : Lat 1° 08.20' N 1° 29.40' N
Long 103° 36.10' E 104° 07.20' E
Scale : 1 : 60 000
Date Published : 19 July 2007
Size of chart : 973.9 x 651.2 mm
Remarks : This new edition includes new topography, working area, submarine cables and depth contours covering the entire chart. This new edition supersedes the earlier edition published on 3 January 2007.

II NEW PUBLICATIONS

NEW EDITION DUAL BADGED CHARTS TO BE PUBLISHED ON 5 JULY 2007

Chart No : 4034
Title : Port of Singapore – East Jurong Channel, Pasir Panjang Terminal and West Keppel Fairway
Coverage Lat 1° 14.50' N 1° 18.55' N
 Long 103° 42.70' E 103° 48.60' E
Scale : 1 : 10 000
Date Published : 5 July 2007
Size of chart : 1094.3 x 746.3 mm
Remarks : This new edition includes updated surveys covering new jetties at North East of Jurong Island, Sinki Fairway, West Keppel Fairway, Pasir Panjang Terminal Berths P24 to 26, Pasir Panjang Wharves Berths P03 to P08 and mooring area for harbour crafts. The existing chart of the same number published on 10 November 2005 is superseded.

Chart No : 4035
Title : Port of Singapore – Western Anchorage, Jong Fairway and Cruise Bay
Coverage Lat 1° 10.90' N 1° 16.90' N
 Long 103° 45.50' E 103° 49.54' E
Scale : 1 : 10 000
Date Published : 5 July 2007
Size of chart : 749.4 x 1105.7 mm
Remarks : This new edition includes updated surveys covering Sinki Fairway, West Keppel Fairway, Pasir Panjang Terminal Berths P24 to 26, Pasir Panjang Wharves Berths P03 to P08, South West of Sentosa, Pulau Sebarok and North of Pulau Bukom. The existing chart of the same number published on 8 September 2005 is superseded.

Chart No : 4036
Title : Port of Singapore – Raffles Lighthouse To The Sisters
Coverage Lat 1° 09.40' N 1° 13.47' N
 Long 103° 44.20' E 103° 50.13' E
Scale : 1 : 10 000
Date Published : 5 July 2007
Size of chart : 1100.0 x 750.1 mm
Remarks : This new edition includes updated surveys covering Pulau Sebarok and a few areas in the Main Strait. The existing chart of the same number published on 8 September 2005 is superseded.

II
NEW PUBLICATIONS

Chart No : 4043
Title : Malaysia and Singapore – Kuala Johor and Sungai Johor
Coverage Lat 1° 16.10' N 1° 34.00' N
 Long 103° 57.90' E 104° 10.00' E
Scale : 1 : 10 000
Date Published : 5 July 2007
Size of chart : 748.1 x 1099.6 mm
Remarks : This new edition includes updated surveys covering Kuala Johor, Eastern Anchorages, Changi East and approaches to Sungai Santi. Abandoned submarine cables are also included. The existing chart of the same number published on 26 September 2002 is superseded.

NEW EDITION DUAL BADGED CHARTS PUBLISHED ON 24 MAY 2007


Chart No : 4037
Title : Port of Singapore – Keppel Harbour, Tanjong Pagar Terminal and Approaches
Coverage Lat 1° 12.52' N 1° 16.59' N
 Long 103° 49.40' E 103° 55.34' E
Scale : 1 : 10 000
Date Published : 24 May 2007
Size of chart : 1100.8 x 750.1mm
Remarks : This new edition includes updated surveys covering East Keppel Fairway, Eastern Fairway, new submarine pipelines and cables from Sentosa to Pulau Seringat and the One° 15 Marina Club. The existing chart of the same number published on 13 April 2006 is superseded.

Chart No : 4041
Title : Singapore and Indonesia
 Pulau Sebarok to Changi
Coverage Lat 1° 07.40' N 1° 19.60' N
 Long 103° 46.90' E 104° 04.70' E
Scale : 1 : 30 000
Date Published : 24 May 2007
Size of chart : 1100.6 x 749.5mm
Remarks : This new edition includes updated surveys covering East Keppel Fairway, West Keppel Fairway, Eastern Fairway and anchorages, new submarine pipelines and cables from Sentosa to Pulau Seringat and the One° 15 Marina Club. Inset Plan covering Marina Bay has been removed. The existing chart of the same number published on 1 December 2005 is superseded.

II
NOTICES TO MARINERS AND CHART CORRECTIONS

NUMERICAL INDEX TO NOTICES TO MARINERS OF 2007 (1 TO 56)

* NM 57/2007

CHART NO.	PUBLISHED	YEAR	NOTICE NO.
SP1, GSP1	1Ed 03/01/07	2007	2-3-4-11-18-19-20-21-22-30-31-32-33-34-43-44-45-46-47-48-49-50-51-52-53
200	2Ed 30/11/05	2007	12-23-39
201	2Ed 15/09/03	2007	40-54
202	5Ed 19/10/06	2007	13-14-15-24-25-26-27-35-53
500	4Ed 15/08/05	2007	18-24-25-26
501	4Ed 21/09/06	2007	18-19-26-53
502	3Ed 25/10/05	2007	5-22-30-31-34-53
503	2Ed 15/09/04	2007	36-53
<hr/>			
SP1/GSP1	1Ed 03/01/07 Last NM 53/2007	(HD/HE025/064/2007)	*NM 58/2007
Relocate	 FI(3)Y.15s, PKDBH-8 (1°14.38'N, 103°41.58'E)		1°14.30'N 103°41.63'E
		(HD/HE025/071/2007)	*NM 59/2007
Substitute	light, FI(3)G.15s8m8M for FI(3)G.15s8m7M		1°14.05'N 103°43.31'E
<hr/>			
200	2Ed 30/11/05 Last NM 39/2007	(Marine Dept. Peninsular Malaysia NTM 2/2007)	NM 60/2007
Substitute	light, Iso.G.5s for Occ.G.5s		2°52.60'N 101°15.72'E
<hr/>			
500	4Ed 15/08/05 Last NM 26/2007	(HD/HE025/071/2007)	*NM 59/2007
Substitute	light, FI(3)G.8M for FI(3)G.7M		1°14.05'N 103°43.31'E
<hr/>			
501	4Ed 21/09/06 Last NM 53/2007	(HD/HE025/071/2007)	*NM 59/2007
Substitute	light, FI(3)G.8M for FI(3)G.7M		1°14.05'N 103°43.31'E
<hr/>			

II
NOTICES TO MARINERS AND CHART CORRECTIONS

502 3Ed 25/01/2005 Last NM 53/2007 (HD/HY Code A00113406) *NM 61/2007

Substitute

 *Wk* for *16*

1°17.91'N 103°56.56'E

II
TEMPORARY AND PRELIMINARY NOTICES

Nil

III
NAVIGATIONAL INFORMATION

***(NM 62/2007) PORT MARINE NOTICES**

These notices can be accessed directly from MPA website:

http://www.mpa.gov.sg/circulars_and_notices/portmarine_notices/pm_notices.htm

PMN No.	Subject
69/2007	Construction of Marina Barrage. (Revision of PMN No. 163/2006)
73/2007	Submarine cable installation in West Keppel Fairway. (Revision of PMN No. 70/2007)
74/2007	Publication of New Edition Dual Badged Charts 4037 and 4041.
76/2007	Rock Bund construction at Pulau Semakau.
77/2007	Reclamation work at Tuas View Extension.
79/2007	Submarine Cable installation and rock-filling operations in West Keppel Fairway.

III AMENDMENTS TO PUBLICATIONS

***(NM 63/2007) UPDATING OF PUBLICATION "SINGAPORE PORT INFORMATION 2006/2007 EDITION"**

1 Page 153 - Item 20

JURONG ISLAND – (SINGAPORE REFINING CO (PTE) LTD) (1°17.6'N, 103°43.0'E)

Amend the following:

Berth	Depth Alongside (Year Surveyed)	
	Delete	<i>Insert</i>
No. 2	15.4m (1999)	15.3m (2007)

Source: HD/HY Code H00102107

2 Page 160 - Item 2

TUAS (PAN – UNITED SHIPYARD PTE LTD) (1°18.8'N, 103°38.5'E)

Amend the following:

Wharves	Depth Alongside (Year Surveyed)	
	Delete	<i>Insert</i>
140M Pier (West)	5.4m (2002)	5.2m (2007)

Source: HD/HY Code G00101807

IV
REPRINT OF RADIO NAVIGATIONAL WARNINGS

Nil

V
**REPRINT OF ADMIRALTY NOTICES TO MARINERS
 FOR DUAL BADGED CHARTS**

These notices can be accessed directly from UKHO Website:

<http://www.ukho.gov.uk/amd/weeklyNms.asp>

2460 * SINGAPORE - Selat Sinki – Pulau Busing – Jetties. Dredged areas. Berths. Depths.

Source: Maritime and Port Authority of Singapore

Chart 4032 [*previous update 2260/07*] WGS84 DATUM

Insert	the accompanying block, showing new jetties, dredged areas, berths and amendments to depths, centred on:	1° 14' 215N., 103° 44'.327E.
--------	--	------------------------------

Chart 4040 [*previous update 2264/07*] WGS84 DATUM

Insert	the accompanying block, showing new jetties and amendments to depths, centred on:	1° 14' 22N., 103° 44'.40E.
--------	---	----------------------------

2643 * SINGAPORE - Sinki Fairway – Pulau Busing – Dredged depths.

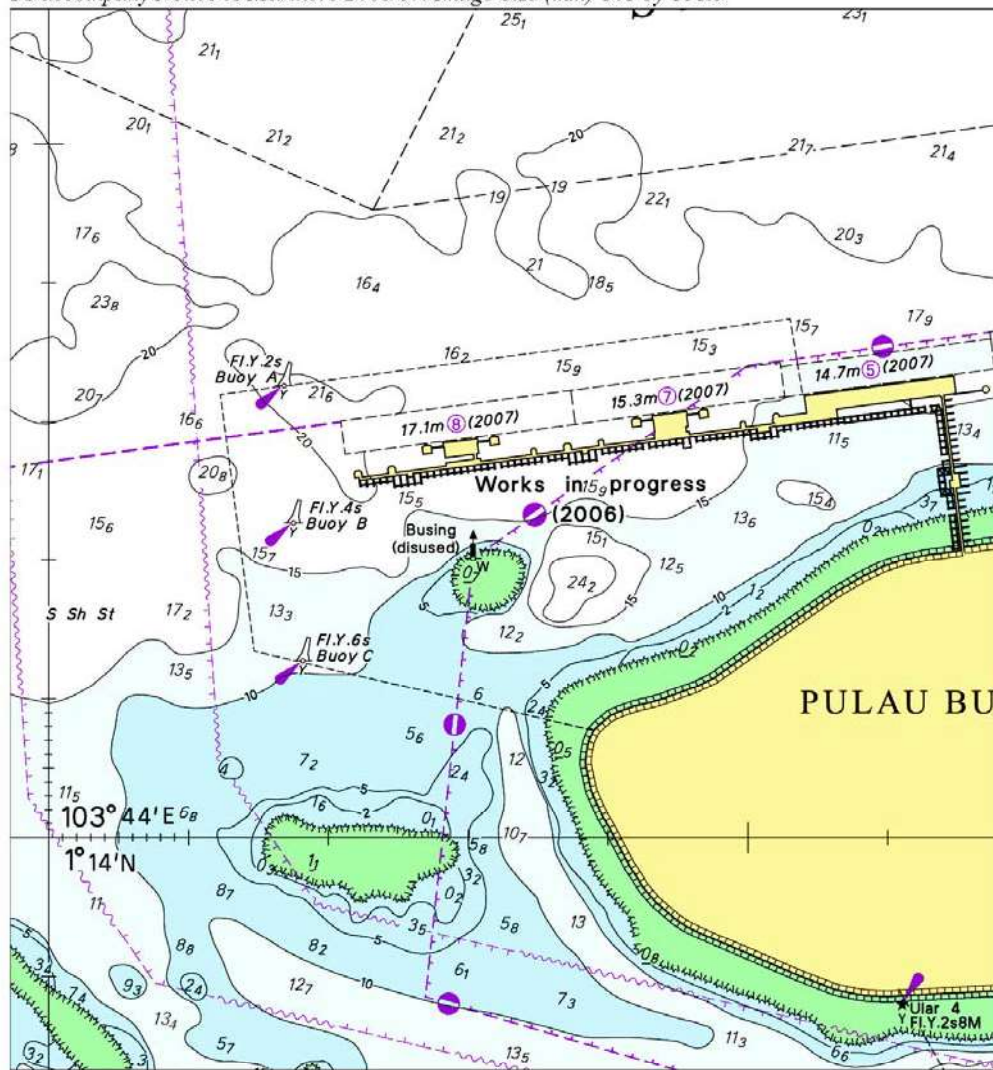
Source: Maritime and Port Authority of Singapore

Chart 4032 [*previous update 2460/07*] WGS84 DATUM

Amend	dredged depth to, 16.9m(2007), centred on:	1° 14' 363N., 103° 44'.773E.
	dredged depth to, 17.0m(2007), centred on:	1° 14' 392N., 103° 44'.996E.
	dredged depth to, 14.7m(2007), centred on:	1° 14' 318N., 103° 44'.944E.
	dredged depth to, 13.5m(2007), centred on:	1° 14' 329N., 103° 45'.039E.
	dredged depth to, 8.5m(2007), centred on:	1° 14' 245N., 103° 45'.002E.

V
REPRINT OF ADMIRALTY NOTICES TO MARINERS
FOR DUAL BADGED CHARTS

To accompany Notice to Mariners 2460/07. Image Size (mm) 141 by 131.5



Block for Chart No 4032

To accompany Notice to Mariners 2460/07. Image Size (mm) 53 by 62.5



Block for Chart No 4040

Updated to Admiralty Notices to Mariners Edition No. 25 of 2007 dated 21 June 2007.

SINGAPORE ELECTRONIC NAVIGATIONAL CHARTS (ENC) DISTRIBUTORS

Please approach any of the appointed distributors to purchase the Singapore ENC.

CONTACT PERSON/ DESIGNATION	ADDRESS	TELEPHONE/FAX NO./EMAIL/WEBSITE
Mr Chong Chee Meng General Manager	DPM (Singapore) Pte Ltd 1 Maritime Square, #09-72 Harbour Front Centre, Singapore 099253	Tel. No.: +65 6270 4060 Fax No.: +65 6276 3858 Email: sales@dpmsingapore.com.sg Website: http://www.dpmsingapore.com.sg
Mr Hamzah Akhbar MDS Branch Manager	Kelvin Hughes(S) Pte Ltd 8 Pandan Avenue #02-00, Singapore 609384	Tel. No.: +65 6545 9880 ext.24 Fax No.: +65 6545 8892 Email: hamzah.akhbar@khsing.com Website: http://www.kelvinhughes.co.uk
Mr Philip Loh Sales Manager	Motion Smith 76 Shenton Way #01-01, Singapore 079119	Tel. No.: +65 6220 5098 Fax No.: +65 6225 4902 Email: sales@motsmith.com Website: http://www.motsmith.com
Mr Looi Keen Wai Regional Sales Manager	Transas Marine Pacific Pte Ltd 750C Chai Chee Road, Technopark@Chai Chee, #04-07 Singapore 469003	Tel. No.: +65 6443 3061 Fax No.: +65 6443 3025 Email: looi@transas.com.sg Website: http://www.transas.com.sg
Mr Choy Kum Weng Director	Vector Services Pte Ltd 15 West Coast Highway, #02-14A Pasir Panjang Building Singapore 117861	Tel. No.: +65 6777 3602 Fax No.: +65 6777 9203 Email: kwchoy@pacific.net.sg
Mr George Arts President	Marine Press of Canada 640 Rue St-Paul Ouest, Suite 300 Montreal (QC) Canada, H3C1L9	Tel. No.: (514) 866-8342 Fax No.: (514) 866-9050 Email : sales@marinepress.com Website: http://www.marinepress.com
Mr Thomas Wilde Superintendent	HanseNautic GmbH Bade & Hornig, Eckardt & Messtorff Herrengaben 31 D-20459 Hamburg, Germany	Tel. No.: +49 40 374 811-32 Fax No.: +49 40 366 400 Email: wilde@hansenautic.de Website : http://www.HanseNautic.com
Ms Verena Borsos Manager	SevenCs AG + Co. KG Ruhrstrasse 90, D-22761 Hamburg, Germany	Tel. No.: +49 40 853 58 6940 Fax No.: +49 40 853 58 6949 Email: sales@chartworld.com Website : http://www.sevencs.com
Mr Keiji Shimizu ENC Manager	Japan Hydrographic Association ENC Service Division 5-3-3 Tsukiji, Chuo-ku Tokyo 104-0045, Japan	Tel. No.: +81 3 3543 0752 Fax No.: +81 3 3543 0695 Email: enc-support@jha.jp Website: http://www.jha.jp.com
Mr Jester-Kim Foreign Business Department Manager	E_MLX Co. Ltd Ssangyong Research No.2 Lab Sinseong-Dong 100 Yusong-Gu, Daejoen 305-804, Korea (ROK)	Tel. No.: +82 42 865 1893 Fax No.: +82 42 865 1884 Email: Jester-kim@emlx.co.kr
Mr C G Kim Managing Director	Korean Ocean Development Co. Ltd 2ND Fl, Dongbang Bldg, 25-4, 4 Ga Jungang-Dong, Jung-Gu, Busan, South Korea	Tel. No.: +82 514 66 0760 Fax No.: +82 514 65 9345 Email: sales@chartkorea.com Website: http://www.chartkorea.com

SINGAPORE ELECTRONIC NAVIGATIONAL CHARTS (ENC) DISTRIBUTORS
Please approach any of the appointed distributors to purchase the Singapore ENC.

CONTACT PERSON/ DESIGNATION	ADDRESS	TELEPHONE/FAX NO./EMAIL/WEBSITE
Mr Kjell Nodland	C-Map Norway A/S P.O Box 212 , N-4371 Egersund, Norway	Tel No.: +47 514 64 700 Fax No.: +47 514 64 701 Email: market@c-map.no Website : http://www.c-map.no
Mr Roar Moe International Marketing Coordinator	Maritime Information System AS (MARIS) Danholmen 25, No.3115 Tonsberg, Norway	Tel. No.: +47 33 30 42 50 Fax No.: +47 33 30 42 51 Email: roar.moe@maris.no Website: http://www.maris.no
Ms Eva Hegland Sales, order and distributor support.	PRIMAR STAVANGER Lervigsveien 36, P.O Box 60, N-4001 Stavanger, Norway	Tel. No.: +47 51 93 9500 Fax No.: +47 51 93 9501 Email: sales@primar.org Website : http://www.primar-stavanger.org
Mr Andy Criddle Regional Sales Manager	United Kingdom Hydrographic Office Admiralty Way, Taunton, Somerset TA1 2DN United Kingdom	Tel. No.: +44 (0)1823 337900 Fax No.: +44 (0)1823 284077 Emails: vargroup@ukho.gov.uk & andrew.criddle@ukho.gov.uk Website: http://www.ukho.gov.uk

CHART AGENTS FOR MARITIME AND PORT AUTHORITY OF SINGAPORE (MPA) PUBLICATIONS

Agent's name : MOTION SMITH
Address : 76 Shenton Way # 01-01
Singapore 079119
Telephone : (65) 6220 5098
: (After Office hours: Pager No. 9304 4156, 9304 4159)
Fax No. : (65) 6225 4902
E-mail : sales@motsmith.com
Website : <http://www.motsmith.com>

Agent's name : HONG YUNN SEA PROFESSIONAL CO., LTD
Address : 198 Ta Tong 1st Road, Kaohsiung 800,
Taiwan
Telephone : 886-7-2217367
Fax No. : 886-7-2818180
E-mail : kimchang@hongyunn.com.tw
Website : <http://www.hongyunn.com.tw>

HYDROGRAPHIC NOTE - Instructions

1. Mariners are requested to notify the Chief Hydrographer, Maritime and Port Authority of Singapore, when new or suspected dangers to navigation are discovered, changes are observed in aids to navigation or where corrections to nautical publications may be necessary. Reports, which cannot be confirmed or are lacking in certain details should not be withheld.
2. Any ambiguities of time, positioning and depth should be stressed and any firm expectation of being able to check the information provided on a following voyage should be mentioned.
3. Mariners using satellite position fixing systems, eg. GPS, should provide details of equipment and datum used (where applicable). Where bearings (true or magnetic) are taken visually or by radar to fix a position, it should include more than two objects in order to provide a check on its accuracy. A position may also be defined by bearing and distance from a conspicuous object eg. beacon, lighthouse etc.
4. The note should include a tracing or a digital image of the chart used and the details should be clearly marked.
5. Echo sounders frequently register greater depths than the advertised maximum depth for the equipment, eg. a trace appearing at 50 metres may be in fact be 550 metres or even 1050 metres for equipment whose maximum depth is 500 metres. Erroneous depths caused by 2nd transmission error can usually be recognised by the following:
 - (a) the tracing being weaker than normal for the depth registered,
 - (b) the trace appearing to pass through the transmission line,
 - (c) the feathery nature of the trace.
6. An acknowledgement of receipt will be sent. When a Notice to Mariners is issued, the sender's vessel or name is quoted as the source unless the same information is also received in foreign Notices to Mariners.
7. Reports of shoals, uncharted dangers and defects in aids to navigation may also be made to the appropriate Singapore Port Operations Control Station on VHF Channels 10, 12, 14, 68 or 73.

HYDROGRAPHIC NOTE

To:

Chief Hydrographer
Hydrographic Department
Maritime and Port Authority of Singapore
460 Alexandra Road PSA Building #20-00
Singapore 119963

Tel : (65) 6375 1227
Fax : (65) 6278 7646
Email : hydrographic@mpa.gov.sg

Sender's Contact Details :

Date :

Name of Vessel :

Address of Sender :

Tel : Fax :

Email :

Nature of Observation :

General Location :

Subject :

Position : Lat. Long.

Charts Used :

Date & Time of Observation :

Details :

.....

.....

Attachment :

Equipment Used :

Type of Position Fixing : GPS / DGPS Others :

Type of Echo Sounder :

Name and Signature :

Ship's/Company's stamp :