



SINGAPOREAN NOTICES TO MARINERS

SECTION	CONTENT	Page
I	Index of Charts & Publications	143
II	New Publications	150
	Notices to Mariners and Chart Corrections	155
	Temporary and Preliminary Notices	159
III	Navigational Information	160
	Amendments to Publications	161
IV	Reprint of Radio Navigational Warnings	162
V	Reprint of Admiralty Notices to Mariners for Dual Badged Charts	163

The monthly Notices to Mariners contain corrective information affecting charts published by the Hydrographic Department, Maritime and Port Authority of Singapore. The information contained in these Notices should be updated on the charts affected. Notices under Section II apply only to the particular Singaporean Chart(s) indicated.

Mariners are requested to notify the Chief Hydrographer, Maritime and Port Authority of Singapore, immediately on the discovery of new dangers or suspected dangers to navigation and of changes or defects in aids to navigation. See Hydrographic Note on back page.

The monthly Singaporean Notices to Mariners can be accessed directly from the MPA website:

<http://www.mpa.gov.sg/> > Circulars & Notices > Singaporean NTM

or

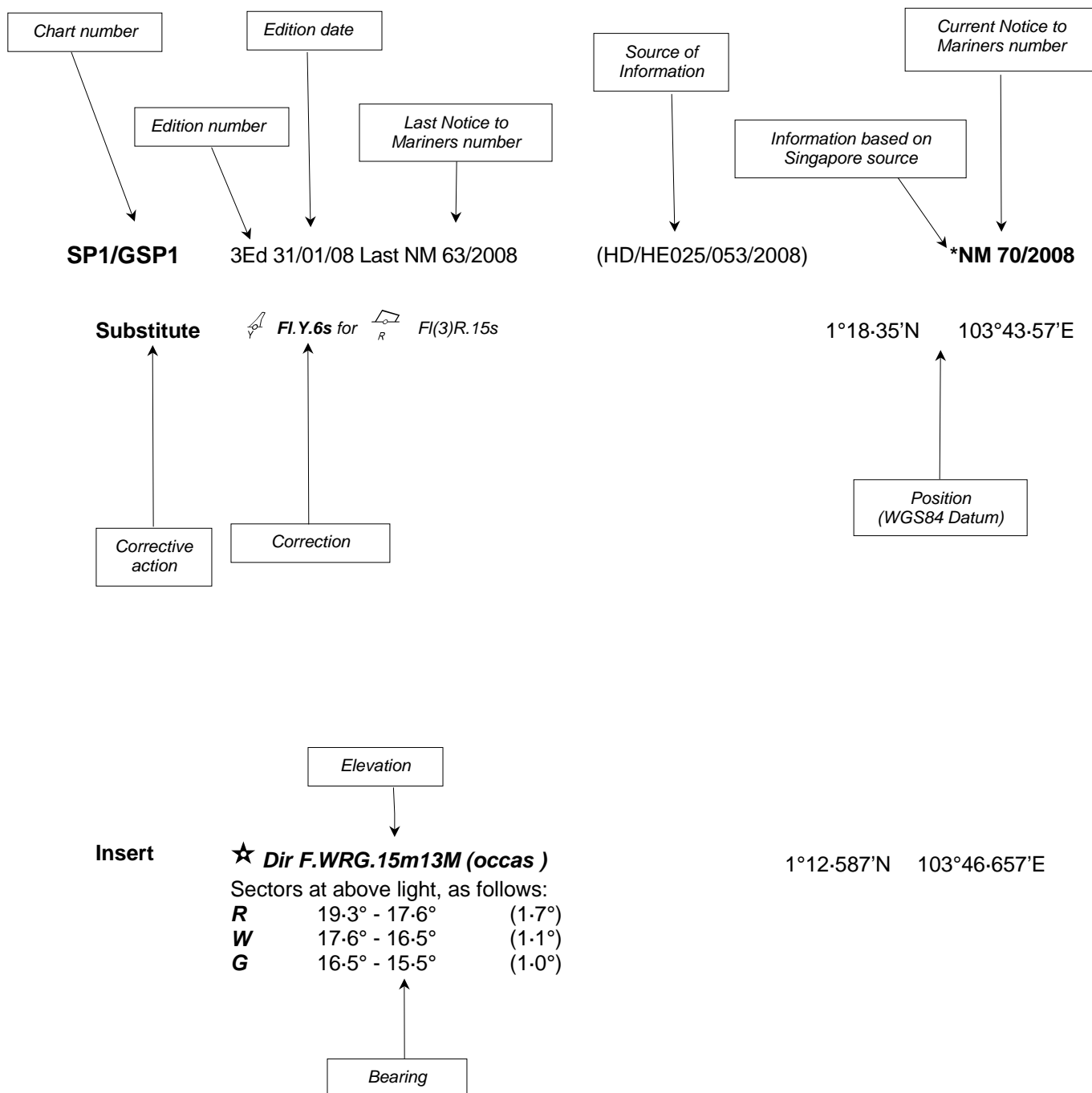
<http://www.mpa.gov.sg/infocentre/publications/noticesmari.htm>

This service is offered free of charge.

Hydrographic Department
Maritime and Port Authority of Singapore
460 Alexandra Road
PSA Building #20-00
Singapore 119963
Tel: (65) 6375 1227
Fax: (65) 6278 7646

EXPLANATION OF FORMAT

The elements of a typical chart correction are explained below.



Notes:

- a) Notice to Mariners number followed by:
 - T** indicates a Temporary Notice (eg. *NM 80T/2008).
 - P** indicates a Preliminary Notice (eg. *NM 80P/2008).
- b) Bearings are referred to True Compass in degrees clockwise from 000° to 359°. Bearings related to lights are from seaward.
- c) Heights and elevations are above Mean High Water Springs.

I
INDEX OF CHARTS AND PUBLICATIONS

DESCRIPTIONS	NOTICE NO	PAGE NO
Index of Singaporean Charts	-	145
Singaporean Charts Catalogue	-	146
Index of Dual Badged Charts	-	147
Dual Badged Charts Catalogue	-	148, 149
Hydrographic Publications	-	149
New Edition Dual Badged Charts	-	150
Numerical Index to Notices to Mariners of 2008	*88	155
Singaporean Chart GSP1/SP1	*89, *90, *91, *92, *93, *94, *95, 96, 97, 98, 99, *100	155 156
Singaporean Chart 201	101	157
Singaporean Chart 202	102, 103T	157 159
Singaporean Chart 500	*95	157
Singaporean Chart 501	*95, 102	157
Singaporean Chart 502	96, 97, 98, 99	158
Port Marine Notices	*104	160
Singaporean Print on Demand (POD) Charts	*105	160
Updating of Publication "SINGAPORE PORT INFORMATION 2008/2009 EDITION"	*106	161
Singapore Electronic Navigational Charts (ENC) Distributors	-	165

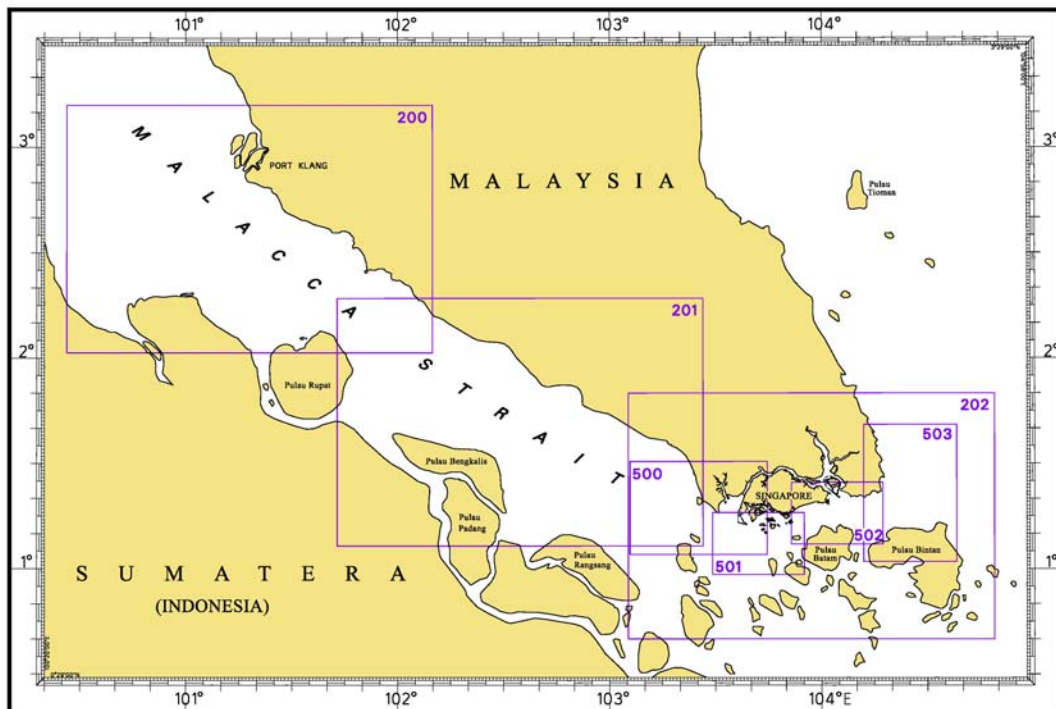
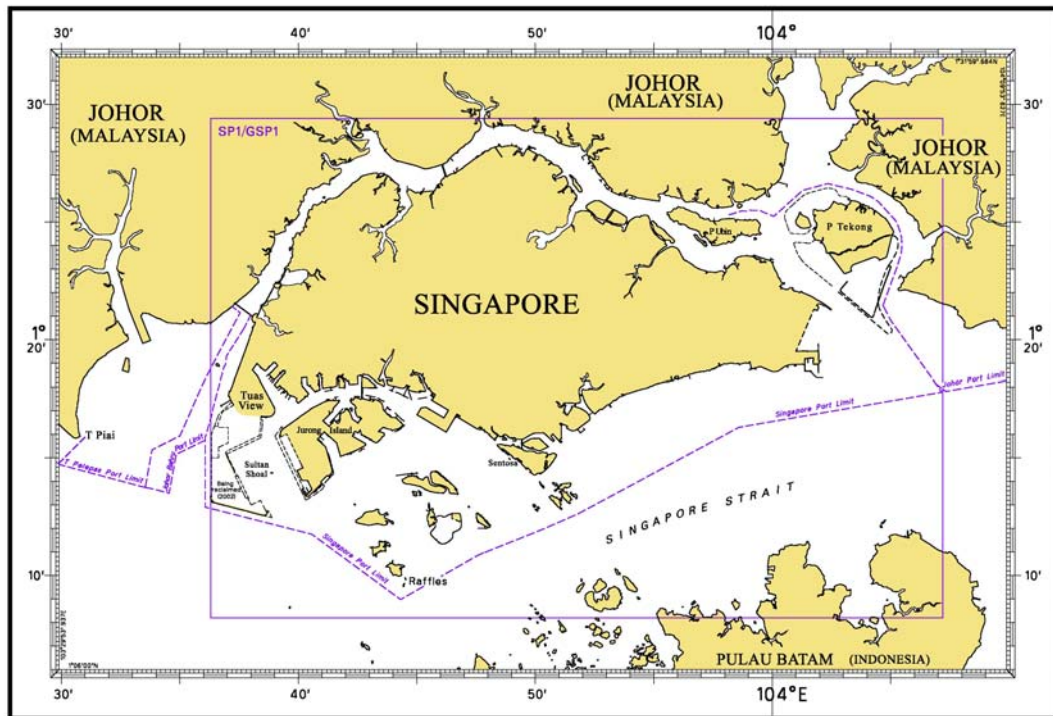
I

INDEX OF CHARTS AND PUBLICATIONS

NOTICES NO	DESCRIPTION	PAGE NO	NOTICES NO	DESCRIPTION	PAGE NO
	Index of Singaporean Charts	145	102	202 501	157 157
	Singaporean Charts Catalogue	146	103T	202	159
	Index of Dual Badged Charts	147	*104	Port Marine Notices	160
	Dual Badged Charts Catalogue	148,149	*105	Singaporean Print on Demand (POD) Charts	160
	Hydrographic Publications	149	*106	Updating of Publication "SINGAPORE PORT INFORMATION 2008/2009 EDITION"	161
	New Edition Dual Badged Charts	150		Singapore Electronic Navigational Charts (ENC) Distributors	165
*88	Numerical Index to Notices to Mariners of 2008	155			
*89	SP1/GSP1	155			
*90	SP1/GSP1	155			
*91	SP1/GSP1	155			
*92	SP1/GSP1	155			
*93	SP1/GSP1	155			
*94	SP1/GSP1	155			
*95	SP1/GSP1 500 501	156 157 157			
96	SP1/GSP1 502	156 158			
97	SP1/GSP1 502	156 158			
98	SP1/GSP1 502	156 158			
99	SP1/GSP1 502	156 158			
*100	SP1/GSP1	156			
101	201	157			

I INDEX OF CHARTS AND PUBLICATIONS

INDEX OF SINGAPOREAN CHARTS



Notes:

Updated SINGAPOREAN Charts (excluding Charts SP1/GSP1 and 503) are available through our Print On Demand (POD)(Chart Service). For more information, refer to Section III – Navigational Information and these charts can be purchased from our authorised Chart Agents:

DPM (Singapore) Pte Ltd, E.W. Liner Charts & Publications Pte Ltd and Motion Smith.

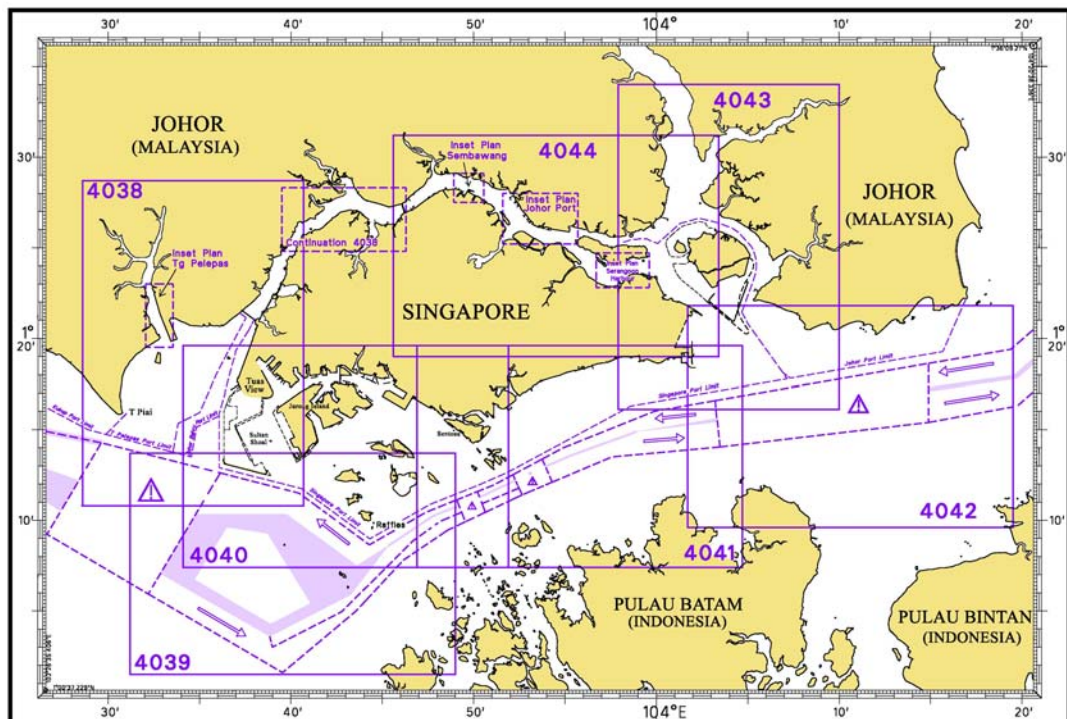
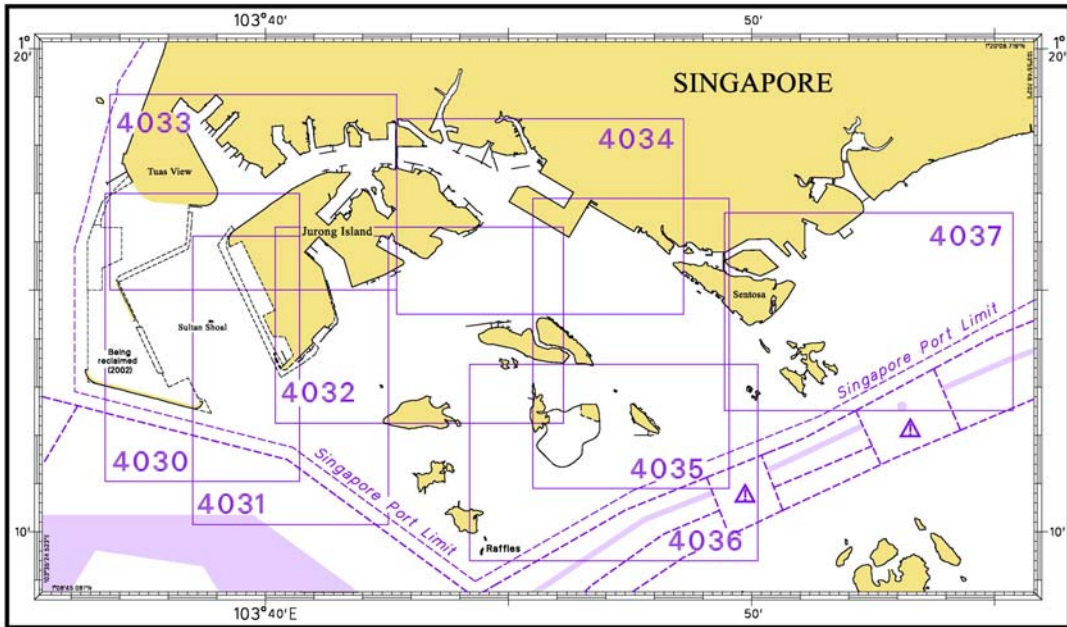
I
INDEX OF CHARTS AND PUBLICATIONS

SINGAPOREAN CHARTS CATALOGUE

Chart No.	Chart Title	Scale 1:	Date Published of Latest Edition
1	Symbols and Abbreviations used on Singaporean produced Nautical Charts – July 2001	-	-
Charts for Small Craft	Singapore Strait & Adjacent Waterways	Various	31/01/07
SP1	Anchorage and Aids to Navigation	60 000	31/01/08
GSP1	Anchorage and Aids to Navigation (with Area Reference)	60 000	31/01/08
200	Malacca Strait - Port Klang to Tanjung Keling	200 000	30/11/05
201	Malacca Strait - Tanjung Keling to Western Entrance of Singapore Strait	200 000	05/10/07
202	Singapore Strait	200 000	19/10/06
500	Malacca and Singapore Straits – Pulau Pisang to Raffles Lighthouse	75 000	30/08/07
501	Singapore Strait – Western Part	50 000	21/09/06
502	Singapore Strait - Eastern Part	50 000	25/10/05
503	South China Sea - Eastern Approaches and Entrance to Singapore Strait	75 000	15/09/04

I INDEX OF CHARTS AND PUBLICATIONS

INDEX OF DUAL BADGED CHARTS



I
INDEX OF CHARTS AND PUBLICATIONS

DUAL BADGED CHARTS CATALOGUE

Chart No.	Chart Title	Scale 1:	Date Published of Latest Edition
4030	Port of Singapore West Jurong Anchorages and Temasek Fairways	10 000	22/05/08
4031	Port of Singapore Western Approaches to Jurong Island Approaches	10 000	22/05/08
4032	Port of Singapore Sinki Fairway	10 000	22/05/08
4033	Port of Singapore Tuas Bay, West Jurong Channel and Pesek Basin	10 000	22/05/08
4034	Port of Singapore East Jurong Channel, Pasir Panjang Terminal and West Keppel Fairway	10 000	31/01/08
4035	Port of Singapore Western Anchorages, Jong Fairway and Cruise Bay	10 000	31/01/08
4036	Port of Singapore Raffles Lighthouse to The Sisters	10 000	05/07/07
4037	Port of Singapore Keppel Harbour, Tanjong Pagar Terminal and Approaches	10 000	24/05/07
4038	Johor Strait – Western Part	30 000	17/08/06
4039	Western Approaches to Main Strait	30 000	29/03/07
4040	Singapore, Indonesia and Malaysia, Tuas View to Pulau Sakijang Bendera (S. John's Island)	30 000	21/09/06
4041	Singapore and Indonesia, Pulau Sebarok to Changi	30 000	24/05/07

I
INDEX OF CHARTS AND PUBLICATIONS

DUAL BADGED CHARTS CATALOGUE

4042	Indonesia, Malaysia and Singapore, Changi to Pulau Mungging and Tanjung Buntan to Tanjung Tondang	30 000	20/05/04
4043	Kuala Johor and Sungai Johor	30 000	05/07/07
4044	Johor Strait - Eastern Part	30 000	22/02/07

HYDROGRAPHIC PUBLICATIONS

Item	Title
1	Year 2008 Singapore Tide Tables
2	Singapore Port Information 2008/2009 Edition

II NEW PUBLICATIONS

NEW EDITION DUAL BADGED CHARTS PUBLISHED ON 22 MAY 2008

- 1 The following new edition charts are jointly produced by MPA, Hydrographic Department and the United Kingdom Hydrographic Office :

Chart Number : **4030**
Title : Port of Singapore – West Jurong Anchorages and Temasek Fairway
Coverage : Lat 1° 11.05' N 1° 17.00' N
 Long 103° 36.70' E 103° 40.70' E
Scale : 1 : 10 000
Date Published : 22 May 2008
Size of chart : 742.0 x 1096.5 mm
Remarks : This new edition includes updated survey data covering :-
 • West Jurong Channel
 • Tuas Anchorages
 • Temasek Fairway

The existing chart of the same number published on 10 August 2006 is superseded.

Chart Number : **4031**
Title : Port of Singapore – Western Approaches to Jurong Island
Coverage : Lat 1° 10.15' N 1° 16.12' N
 Long 103° 38.50' E 103° 42.53' E
Scale : 1 : 10 000
Date Published : 22 May 2008
Size of chart : 747.5 x 1100.2 mm
Remarks : This new edition includes updated survey data covering :-
 • Temasek Fairway
 • Tuas Anchorages
 • Universal Terminals
 • Helios Terminals
 • Raffles Shoal

The existing chart of the same number published on 10 August 2006 is superseded.

II NEW PUBLICATIONS

Chart Number : **4032**
Title : Port of Singapore – Sinki Fairway
Coverage : Lat 1° 12.25' N 1° 16.30' N
 Long 103° 40.20' E 103° 46.13' E
Scale : 1 : 10 000
Date Published : 22 May 2008
Size of chart : 1100.0 x 746.4 mm
Remarks : This new edition includes updated survey data covering :-

- Banyan Basin
- Sakra Basin
- East Jurong Channel
- Selat Pandan
- Area around Pulau Busing, Pulau Ular and Pulau Bukom Kechil

The existing chart of the same number published on 10 August 2006 is superseded.

Chart Number : **4033**
Title : Port of Singapore – Tuas Bay, West Jurong Channel and Pesek Basin
Coverage : Lat 1° 15.00' N 1° 19.05' N
 Long 103° 36.80' E 103° 42.70' E
Scale : 1 : 10 000
Date Published : 22 May 2008
Size of chart : 1094.4 x 746.4 mm
Remarks : This new edition includes updated survey data covering :-

- Temasek Fairway
- West Jurong Channel
- Benoi Basin
- Approaches to Northern Tuas Channel

The existing chart of the same number published on 15 June 2006 is superseded.

II NEW PUBLICATIONS

NEW EDITION DUAL BADGED CHARTS TO BE PUBLISHED ON 24 JULY 2008

- 2 The following new edition charts are jointly produced by MPA, Hydrographic Department and the United Kingdom Hydrographic Office :

Chart Number : **4034**
Title : Port of Singapore – East Jurong Channel, Pasir Panjang Terminal and West Keppel Fairway
Coverage : Lat 1° 14.50' N 1° 18.55' N
 Long 103° 42.70' E 103° 48.60' E
Scale : 1 : 10 000
Date Published : 24 July 2008
Size of chart : 1094.3 x 746.3 mm
Remarks : This new edition includes updated survey data covering :-

- East Jurong Channel
- West Keppel Fairway
- Pasir Panjang Fairway
- Selat Sakra

The existing chart of the same number published on 31 January 2008 is superseded.

Chart Number : **4035**
Title : Port of Singapore – Western Anchorages, Jong Fairway and Cruise Bay
Coverage : Lat 1° 10.90' N 1° 16.90' N
 Long 103° 45.50' E 103° 49.54' E
Scale : 1 : 10 000
Date Published : 24 July 2008
Size of chart : 749.4 x 1105.7 mm
Remarks : This new edition includes updated survey data covering :-

- East Jurong Channel
- West Keppel Fairway
- Pasir Panjang Fairway
- Western Anchorages
- Approaches to Shell SBM

The existing chart of the same number published on 31 January 2008 is superseded.

II NEW PUBLICATIONS

Chart Number	:	4040
Title	:	Singapore, Indonesia and Malaysia, Tuas View to Pulau Sakijang Bendera (S. John's Island)
Coverage	:	Lat 1° 07.40' N 1° 19.60' N Long 103° 34.10' E 103° 51.90' E
Scale	:	1 : 30 000
Date Published	:	24 July 2008
Size of chart	:	1100.6 x 749.5 mm
Remarks	:	This new edition includes updated survey data covering :- <ul style="list-style-type: none"> • Tuas Anchorages • West & East Jurong Channel • Temasek Fairway • Raffles Shoal • Western Anchorages • Approaches to Pulau Sebarok • Area around Pulau Busing, Pulau Ular and Pulau Bukom Kechil • East Keppel Fairway • Sister Fairway

The existing chart of the same number published on 21 September 2006 is superseded.

Chart Number	:	4041
Title	:	Singapore and Indonesia, Pulau Sebarok to Changi
Coverage	:	Lat 1° 07.40' N 1° 19.60' N Long 103° 46.90' E 104° 04.70' E
Scale	:	1 : 30 000
Date Published	:	24 July 2008
Size of chart	:	1100.6 x 749.5 mm
Remarks	:	This new edition includes updated survey data covering :- <ul style="list-style-type: none"> • Western Anchorages • Approaches to Pulau Sebarok • East Keppel Fairway • Sister Fairway • Eastern Anchorage • Eastern Fairway • Eastern Bunkering A Anchorage • Eastern Special Purposes D Anchorage

The existing chart of the same number published on 24 May 2007 is superseded.

II NEW PUBLICATIONS



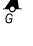

Chart Number	:	4042
Title	:	Indonesia, Malaysia and Singapore Changi To Pulau Mungging and Tanjung Buntan To Tanjung Tondang
Coverage	:	Lat 1° 09.55' N 1° 21.75' N Long 104° 01.70' E 104° 19.50' E
Scale	:	1 : 30 000
Date Published	:	24 July 2008
Size of chart	:	1100.6 x 749.5 mm
Remarks	:	This new edition includes updated survey data covering :- <ul style="list-style-type: none">• Eastern Bunkering Anchorage• Changi General Purposes and Man-of-War Anchorages• Cable Corridor Area• Area South of Pulau Tekong

The existing chart of the same number published on 20 May 2004 is superseded.







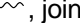
II NOTICES TO MARINERS AND CHART CORRECTIONS

*(NM 88/2008) NUMERICAL INDEX TO NOTICES TO MARINERS OF 2008 (1 TO 87)




CHART NO.	PUBLISHED	YEAR	NOTICES NO.
SP1, GSP1	3 Ed 31/01/08	2008	27-28-29-30-31-38-39-40-41-42-43-44-45-55-56-57-58-59-60-61-62-63-70-71-72-73-74
200	2Ed 30/11/05	2008	10-11-12-46-75
201	3Ed 05/10/07	2008	11-32-47-76-84
202	5Ed 19/10/06	2008	13-14-43-44-48-49-58-64-77
500	5Ed 30/08/07	2008	14-30-31-49-50-64
501	4Ed 21/09/06	2008	14-15-30-31-43-50-65-74
502	3Ed 25/10/05	2008	9-13-16-43-44-51-52-58-74
503	2Ed 15/09/04	2008	74

SP1/GSP1	3Ed 31/01/08 Last 74/2008	(HD/HE025/077/2008)	*NM 89/2008
Substitute	 for 	1°13-98'N	103°44-13'E
		(HD/HE025/078/2008)	*NM 90/2008
Substitute	 for 	1°13-90'N	103°44-11'E
		(HD/HE025/079/2008)	*NM 91/2008
Substitute	 for 	1°13-82'N	103°44-37'E
		(HD/HE025/080/2008)	*NM 92/2008
Substitute	 for 	1°13-85'N	103°44-56'E
		(HD/HE025/081/2008)	*NM 93/2008
Substitute	 for 	1°13-73'N	103°44-79'E
		(HD/HE025/076/2008)	*NM 94/2008
Insert		1°16-90'N	103°52-85'E

II NOTICES TO MARINERS AND CHART CORRECTIONS

		(HD/HY Code AB0300408)	*NM 95/2008
Delete	Limit of entry prohibited area joining		1°13-89'N 103°44-27'E 1°14-29'N 103°44-11'E
Insert	Limit of entry prohibited area joining		1°13-89'N 103°44-27'E 1°13-90'N 103°44-21'E 1°14-12'N 103°44-03'E 1°14-27'N 103°44-01'E 1°14-29'N 103°44-11'E
		(Indonesian Notices 21/180/2008)	NM 96/2008
Insert	 FI.G.3s5M No.1		1°09-41'N 103°59-11'E
		(Indonesian Notices 21/181/2008)	NM 97/2008
Insert	 FI.R.3s5M No.2		1°09-48'N 103°59-16'E
		(Indonesian Notices 22/188/2008)	NM 98/2008
Insert	 FI.G.5s5M No.3		1°09-25'N 103°59-46'E
		(Indonesian Notices 22/187/2008)	NM 99/2008
Insert	 FI.R.4s5M No.4		1°09-35'N 103°59-48'E
		(HD/HY/Code C00900308)	*NM 100/2008
Insert	Submarine pipeline,  , joining :	(shore)	1°16-10'N 103°47-94'E 1°15-61'N 103°47-87'E 1°15-47'N 103°47-80'E 1°14-99'N 103°47-15'E 1°14-95'N 103°46-99'E 1°15-01'N 103°46-62'E 1°14-98'N 103°46-41'E 1°14-74'N 103°45-92'E (shore) 1°14-39'N 103°45-61'E
	Legend, ' Water '		1°15-14'N 103°47-47'E
	Submarine cable,  $\{$  , joining :	(shore)	1°16-10'N 103°47-93'E 1°15-73'N 103°47-87'E 1°15-45'N 103°47-70'E 1°15-04'N 103°47-13'E 1°15-00'N 103°46-93'E 1°15-06'N 103°46-50'E 1°14-66'N 103°45-56'E 1°14-59'N 103°45-47'E 1°14-48'N 103°45-44'E 1°14-07'N 103°45-58'E
	Legend, ' Buried '		1°15-14'N 103°47-20'E

II
NOTICES TO MARINERS AND CHART CORRECTIONS

201	3Ed 5/10/07 Last 84/2008	(Indonesian Notices 19/160/2008)	NM 101/2008
Insert	 Fl.G.3s4M No.1		1°32-50'N 101°55-87'E
<hr/>			
202	5Ed 19/10/06 Last 77/2008	(Indonesian Notices 18/153/2008)	NM 102/2008
Insert	Limit of anchorage area joining :		1°01-00'N 103°34-75'E 1°01-00'N 103°37-75'E 1°01-88'N 103°35-60'E 1°01-00'N 103°34-75'E
	Symbol  centred at :		1°01-33'N 103°35-90'E
<hr/>			
500	5Ed 30/8/07 Last 64/2008	(HD/HY Code AB0300408)	*NM 95/2008
Delete	Limit of entry prohibited area joining		1°13-89'N 103°44-27'E 1°14-20'N 103°44-30'E 1°14-34'N 103°44-50'E
Insert	Limit of entry prohibited area joining		1°13-89'N 103°44-27'E 1°13-90'N 103°44-21'E 1°14-12'N 103°44-03'E 1°14-27'N 103°44-01'E 1°14-34'N 103°44-50'E
<hr/>			
501	4Ed 21/9/06 Last 74/2008	(HD/HY Code AB0300408)	*NM 95/2008
Delete	Limit of entry prohibited area joining		1°13-89'N 103°44-27'E 1°14-20'N 103°44-30'E 1°14-34'N 103°44-50'E
Insert	Limit of entry prohibited area joining		1°13-89'N 103°44-27'E 1°13-90'N 103°44-21'E 1°14-12'N 103°44-03'E 1°14-27'N 103°44-01'E 1°14-34'N 103°44-50'E
		(Indonesian Notices 18/153/2008)	NM 102/2008
Insert	Limit of anchorage area joining :		1°01-00'N 103°34-75'E 1°01-00'N 103°37-75'E 1°01-88'N 103°35-60'E 1°01-00'N 103°34-75'E
	Symbol  centred at :		1°01-33'N 103°35-90'E

II
NOTICES TO MARINERS AND CHART CORRECTIONS

502	3Ed 25/10/05 Last 74/2008	(Indonesian Notices 21/180/2008)	NM 96/2008
Insert	 FI.G.3s5M No.1	1°09.41'N	103°59.11'E
		(Indonesian Notices 21/181/2008)	NM 97/2008
Insert	 FI.R.3s5M No.2	1°09.48'N	103°59.16'E
		(Indonesian Notices 22/188/2008)	NM 98/2008
Insert	 FI.G.5s5M No.3	1°09.25'N	103°59.46'E
		(Indonesian Notices 22/187/2008)	NM 99/2008
Insert	 FI.R.4s5M No.4	1°09.35'N	103°59.48'E

III NAVIGATIONAL INFORMATION

*(NM 104/2008) PORT MARINE NOTICES

The following PMNs have been shortlisted, as they would be of particular interest to mariners.

These notices can be accessed directly from MPA website:

http://www.mpa.gov.sg/circulars_and_notices/portmarine_notices/pm_notices.htm

PMN No.	Subject
107/2008	Dredging and Marine Construction works at Sungei Serangoon.
109/2008	Dredging works in East Keppel Fairway and its vicinity.
111/2008	Construction of Marina Barrage.
114/2008	Reclamation works at Cruise Bay.
115/2008	A) Rock-filling operations in West Keppel Fairway – SSD6. B) Temporary Holding Area in Working Area “A” (off Labrador Park).
116/2008	Removal of underwater obstruction at Marina South – Phase II.
117/2008	Reclamation at Pasir Panjang Terminal and Pasir Panjang Wharves.
118/2008	Marine soil investigation at Changi East Finger.

*(NM 105/2008) SINGAPOREAN PRINT ON DEMAND (POD) CHARTS

Print On Demand (POD) Charts are the most up-to-date paper nautical charts printed for navigational use. These nautical charts are produced in accordance with the International Hydrographic Organisation (IHO) charting specifications. These official nautical charts are continually updated to the latest Notices to Mariners before they are printed and sold to users.

These POD Charts include 200, 201, 202, 500, 501, 502.

BENEFITS TO OUR CUSTOMERS

Convenience

Customers need not make numerous hand corrections to the nautical charts before use. In addition the updated POD Charts are more accurate and reliable than offset printed charts with hand corrections.

Clarity

Clarity in the presentation of updated information as compared to lithographic printed charts, where in some cases there are several overlapping corrections over existing information.

Coverage

The POD Charts cover the Malacca and Singapore Straits, from One Fathom Bank to Horsburgh Lighthouse.

III
AMENDMENTS TO PUBLICATIONS

***(NM 106/2008) UPDATING OF PUBLICATION "SINGAPORE PORT INFORMATION 2008/2009 EDITION"**

1 Page 139 – Item 7

PASIR PANJANG TERMINAL
(PSA Corporation Ltd) (1°17-2'N, 103°46-1'E)

Insert the following:

Berth	Length of Berth	Depth Alongside (Year Surveyed)	Controlling Depth In Approaches
P19	326m	16.0m (2008)	16.7m

Source: HD/HY Code C00101408

2 Page 144 – Item 16

JURONG ISLAND
(EXXONMOBIL ASIA PACIFIC PTE LTD) (1°16-8'N, 103°41-5'E)

Delete the following:

Berth	Length of Berth	Max LOA	Depth Alongside (Year Surveyed)	Controlling Depth In Approaches
Esso Bulk Pier	107m	97m	3.9m (2007)	5.9m

3 Page 144 – Item 17

JURONG – TG. SAKUNYIT & JURONG ISLAND
(EXXONMOBIL ASIA PACIFIC PTE LTD) (1°17-9'N, 103°41-3'E)

Insert the following:

Berth	Depth Alongside (Year Surveyed)	
	Delete	Insert
4	8.6m(2007)	8.6m(2008)

Source: HD/HY Codes H00100508

Insert the following:

Berth	Length of Berth	Max LOA	Depth Alongside (Year Surveyed)	Controlling Depth In Approaches
Esso Bulk Pier	107m	97m	3.7m (2008)	5.9m

Source: HD/HY Code H00100508

IV
REPRINT OF RADIO NAVIGATIONAL WARNINGS

Nil

V
**REPRINT OF ADMIRALTY NOTICES TO MARINERS
 FOR DUAL BADGED CHARTS**

These notices can be accessed directly from UKHO Website:

<http://www.ukho.gov.uk/amd/weeklyNms.asp>

2970* INDONESIA – Sumatera – Pulau Batam Northwards, Pulau Cula and Pulau Pemping Besar-westwards - Wrecks. Legend.

Light List Vol. F, 2007/08, 1693.9

Source: Indonesian Chart 348

Chart 4039 [*previous update 2283/08*] WGS84 DATUM

Move	 , from to:	1° 02'.30N., 103° 42'.79E. 1° 02'.03N., 103° 42'.80E.
Delete	 <i>Rep (2003)</i>	1° 07'.69N., 103° 46'.63E.

Chart 4040 [*previous update 2285/08*] WGS84 DATUM

Delete	 <i>Rep (2003)</i>	1° 07'.69N., 103° 46'.63E.
--------	---	----------------------------

3065* SINGAPORE – Johor Strait – Eastern Part – Pulau Seletar Northwards and Pulau Punggol Barat to Pulau Punggol Timor – Causeway. Obstructions.

Source: Maritime and Port Authority of Singapore

Chart 4044 (plan B, Pelabuhan Johor (Johor Port)) [*previous update 2284/08*] WGS84 DATUM





Insert	causeway, double firm line, width 40m, joining: legend, Causeway, along:  <i>Obstn</i>	(a) 1° 25'.373N., 103° 53'.235E. (b) 1° 25'.405N., 103° 53'.180E. (a)-(b) above (c) 1° 27'.148N., 103° 51'.915E.
Delete	 <i>Obstns</i> , adjacent to:	(c) above

Chart 4044 [*previous update 2284/08*] WGS84 DATUM

Insert	causeway, double firm line, width 40m, joining: legend, Causeway, along:  <i>Obstn</i>	(a) 1° 25'.37N., 103° 53'.24E. (b) 1° 25'.40N., 103° 53'.18E. (a)-(b) above (c) 1° 27'.15N., 103° 51'.92E.
Delete	 <i>Obstns</i> , adjacent to:	(c) above

3066* SINGAPORE – East Jurong Channel – Pasir Panjang Terminal – Dredged areas. Legends. Berths.

Source: Maritime and Port Authority of Singapore

Chart 4034 [*previous update 2285/08*] WGS84 DATUM

Insert	limit of dredged area, pecked line, joining: legend, <i>15.0m (2008)</i> , orientated NW/SE, centred on: berth number, P11 limit of dredged area, pecked line, joining:	(a) 1° 17'.152N., 103° 45'.392E. (shore) (b) 1° 17'.180N., 103° 45'.409E. (c) 1° 17'.088N., 103° 45'.560E. (existing limit) 1° 17'.118N., 103° 45'.477E. 1° 17'.091N., 103° 45'.460E. (d) 1° 16'.384N., 103° 45'.756E. (shore) (e) 1° 16'.356N., 103° 45'.739E. (f) 1° 16'.266N., 103° 45'.890E.
--------	--	--

V
REPRINT OF ADMIRALTY NOTICES TO MARINERS
FOR DUAL BADGED CHARTS

	legend, 16.1m (2008), orientated NW/SE, centred on:	(existing limit)
	berth number, P20	1° 16'.327N., 103° 45'.823E.
Delete	charted detail within:	1° 16'.358N., 103° 45'.836E. (a)-(c) above (d)-(f) above

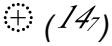
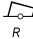


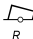
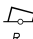
Chart 4035 [previous update 2283/08] WGS84 DATUM

Insert	limit of dredged area, pecked line, joining:	(a) 1° 16'.384N., 103° 45'.756E. (shore) (b) 1° 16'.356N., 103° 45'.739E. 1° 16'.266N., 103° 45'.890E. (c) (existing limit)
	legend, 16.1m (2008), orientated NW/SE, centred on:	1° 16'.327N., 103° 45'.823E.
	berth number, P20	1° 16'.358N., 103° 45'.836E.
Delete	charted detail within:	(a)-(c) above

3067* SINGAPORE – East Jurong Channel – Jurong Port and Pasir Panjang Terminal – Rock. Buoyage.

Source: Maritime and Port Authority of Singapore

Chart 4034 [previous update 3066/08] WGS84 DATUM

Insert		1° 17'.481N., 103° 45'.581E.
Substitute	 FI.R.2s JP1 for  FI.G.2.5s JP1	1° 17'.988N., 103° 43'.718E.
Delete	 Q(3)10s JP2	1° 18'.026N., 103° 43'.636E.
	 FI.R.5s JP4	1° 18'.077N., 103° 43'.662E.
	 FI(3)R.15s JP6	1° 18'.351N., 103° 43'.568E.

3295* INDONESIA – Sumatera – Selat Phillip – P. Takong Kecil Southwards and South-westwards – Wrecks.

Source: Indonesian Chart 347

Chart 4039 [previous update 2970/08] WGS84 DATUM

Insert		1° 05'.82N., 103° 43'.28E.
Delete		1° 06'.18N., 103° 42'.96E.

3296* INDONESIA – Sumatera – Selat Durian – Pulau Kepalajerih Westwards – Anchorage area.

Source: Indonesian Notice 18/153/08

Chart 4039 [previous update 3295/08] WGS84 DATUM

Insert	limit of anchorage area, pecked line, joining:	1° 01'.50N., 103° 35'.23E. (S border) 1° 01'.61N., 103° 35'.34E. (S border of Tidal Streams table) 1° 01'.81N., 103° 35'.53E. (E border of Tidal Streams table) 1° 01'.88N., 103° 35'.60E. 1° 01'.50N., 103° 36'.53E. (S border)
--------	--	--

Updated to Admiralty Notices to Mariners Edition No. 26 of 2008 dated 26 June 2008.

SINGAPORE ELECTRONIC NAVIGATIONAL CHARTS (ENC) DISTRIBUTORS
Please approach any of the appointed distributors to purchase the Singapore ENC.

CONTACT PERSON/ DESIGNATION	ADDRESS	TELEPHONE/FAX NO./EMAIL/WEBSITE
Mr Chong Chee Meng General Manager	DPM (Singapore) Pte Ltd 1 Maritime Square, #09-72 Harbour Front Centre, Singapore 099253	Tel. No.: +65 6270 4060 Fax No.: +65 6276 3858 Email: sales@dpmsingapore.com.sg Website: http://www.dpmsingapore.com.sg
Mr Hamzah Akhbar MDS Branch Manager	Kelvin Hughes(S) Pte Ltd 8 Pandan Avenue #02-00, Singapore 609384	Tel. No.: +65 6545 9880 ext.24 Fax No.: +65 6545 8892 Email: hamzah.akhbar@khsing.com Website: http://www.kelvinhughes.co.uk
Mr Looi Keen Wai Regional Sales Manager	Maritime Information Systems (MARIS) 52, Telok Blangah Road #01-06, Telok Blangah Centre, Singapore 058809	Tel. No.: +65 6276 1472 Fax No.: +65 6276 1473 Email: support@maris.sg Website: http://www.maris.no
Ms Kathrine Bjaroy Marketing Coordinator	Maritime Information System AS (MARIS) Danholmen 25, 3128 Notteroy, Norway	Tel. No.: +47 33 30 42 50 Fax No.: +47 33 30 42 51 Email: roar.moe@maris.no Website: http://www.maris.no
Mr Bernard Wong Sales Manager	Motion Smith 15 Jalan Kilang Barat #08-01/05 Frontech Centre Singapore 159357	Tel. No.: +65 6220 5098 Fax No.: +65 6225 4902 Email: sales@motsmith.com Website: http://www.motsmith.com
Mr Dominic Oliver	Transas Marine Pacific Pte Ltd 750C Chai Chee Road, #04-07, Technopark@Chai Chee, Singapore 469003	Tel. No.: +65 6443 3061 Fax No.: +65 6443 3025 Email: dominic@transas.com.sg Website: http://www.transas.com.sg
Mr Choy Kum Weng Director	Vector Services Pte Ltd 15 West Coast Highway, #02-14A Pasir Panjang Building Singapore 117861	Tel. No.: +65 6777 3602 Fax No.: +65 6777 9203 Email: kwchoy@pacific.net.sg
Mr George Arts President	Marine Press of Canada 640 Rue St-Paul Ouest, Suite 300 Montreal (QC) Canada, H3C1L9	Tel. No.: (514) 866-8342 Fax No.: (514) 866-9050 Email : sales@marinepress.com Website: http://www.marinepress.com
Mr Thomas Wilde Superintendent	HanseNautic GmbH Bade & Hornig, Eckardt & Messtorff Herrengaben 31 D-20459 Hamburg, Germany	Tel. No.: +49 40 374 811-32 Fax No.: +49 40 366 400 Email: wilde@hansenautic.de Website : http://www.HanseNautic.com
Ms Verena Borsos Manager	SevenCs AG + Co. KG Ruhrstrasse 90, D-22761 Hamburg, Germany	Tel. No.: +49 40 853 58 6940 Fax No.: +49 40 853 58 6949 Email: sales@chartworld.com Website : http://www.sevencs.com
Mr Keiji Shimizu General Manager	Japan Hydrographic Association Electronic Charts Division Daiichi Sogo Bldg, 6F 1-6-6, Hanedakuko, Ota-ku Tokyo 144-0041 Japan	Tel. No.: +81 3 5708 7093 Fax No.: +81 3 5708 7094 Email: enc-support@jha.jp Website: http://www.jha.jp
Mr Jester-Kim Foreign Business Department Manager	E_MLX Co. Ltd Ssangyong Research No.2 Lab Sinseong-Dong 100 Yusong-Gu, Daejoen 305-804, Korea (ROK)	Tel. No.: +82 42 865 1893 Fax No.: +82 42 865 1884 Email: Jester-kim@emlx.co.kr

SINGAPORE ELECTRONIC NAVIGATIONAL CHARTS (ENC) DISTRIBUTORS

Please approach any of the appointed distributors to purchase the Singapore ENC.

CONTACT PERSON/ DESIGNATION	ADDRESS	TELEPHONE/FAX NO./EMAIL/WEBSITE
Mr C G Kim Managing Director	Korean Ocean Development Co. Ltd 2ND Fl, Dongbang Bldg, 25-4, 4 Ga Jungang-Dong, Jung-Gu, Busan, South Korea	Tel. No.: +82 514 66 0760 Fax No.: +82 514 65 9345 Email: sales@chartkorea.com Website: http://www.chartkorea.com
Mr Kjell Nodland	Jeppesen Norway A/S P.O Box 212 , N-4379 Egersund, Norway	Tel No.: +47 514 64 700 Fax No: +47 514 64 701 Email: enc@c-map.no Website : http://www.c-map.no
Ms Eva Hegland Sales, order and distributor support.	PRIMAR STAVANGER Lervigsveien 36, P.O Box 60, N-4001 Stavanger, Norway	Tel. No.: +47 51 93 9500 Fax No.: +47 51 93 9501 Email: sales@primar.org Website : http://www.primar-stavanger.org
Mrs Christine Trickett Product Manager	United Kingdom Hydrographic Office Admiralty Way, Taunton, Somerset TA1 2DN United Kingdom	Tel. No.: +44 (0)1823 337900 Fax No.: +44 (0)1823 284077 Emails: vargroup@ukho.gov.uk & christine.trickett@ukho.gov.uk Website: http://www.ukho.gov.uk

Agents for the Maritime and Port Authority of Singapore Publications

Agent's name : **DPM (Singapore) Pte Ltd**
Address : 1 Maritime Square #09-72, HarbourFront Centre,
Singapore 099253
Telephone : (65) 6270 4060
Fax No. : (65) 6276 3858
E-mail : sales@dpmsingapore.com.sg
Internet Web Site : <http://www.dpmsingapore.com.sg>

Agent's name : **E.W. Liner Charts & Publications Pte Ltd**
Address : 102F, Pasir Panjang Road, #08-01, Citilink Warehouse Complex,
Singapore 118530
Telephone : (65) 6323 0773
Fax No. : (65) 6323 0775
E-mail : ewliner@singnet.com.sg
Internet Web Site : <http://www.ewliner.com>

Agent's name : **Motion Smith**
Address : 15 Jalan Kilang Barat
#08-01/05 Frontech Centre,
Singapore 159357
Telephone : (65) 6220 5098
: (After office hours: 8163 9993)
Fax No. : (65) 6225 4902
E-mail : sales@motsmith.com
Internet Web Site : <http://www.motsmith.com>

HYDROGRAPHIC NOTE - Instructions

1. Mariners are requested to notify the Chief Hydrographer, Maritime and Port Authority of Singapore, when new or suspected dangers to navigation are discovered, changes are observed in aids to navigation or where corrections to nautical publications may be necessary. Reports, which cannot be confirmed or are lacking in certain details should not be withheld.
2. Any ambiguities of time, positioning and depth should be stressed and any firm expectation of being able to check the information provided on a following voyage should be mentioned.
3. Mariners using satellite position fixing systems, eg. GPS, should provide details of equipment and datum used (where applicable). Where bearings (true or magnetic) are taken visually or by radar to fix a position, it should include more than two objects in order to provide a check on its accuracy. A position may also be defined by bearing and distance from a conspicuous object eg. beacon, lighthouse etc.
4. The note should include a tracing or a digital image of the chart used and the details should be clearly marked.
5. Echo sounders frequently register greater depths than the advertised maximum depth for the equipment, eg. a trace appearing at 50 metres may be in fact be 550 metres or even 1050 metres for equipment whose maximum depth is 500 metres. Erroneous depths caused by 2nd transmission error can usually be recognised by the following:
 - (a) the tracing being weaker than normal for the depth registered,
 - (b) the trace appearing to pass through the transmission line,
 - (c) the feathery nature of the trace.
6. An acknowledgement of receipt will be sent. When a Notice to Mariners is issued, the sender's vessel or name is quoted as the source unless the same information is also received in foreign Notices to Mariners.
7. Reports of shoals, uncharted dangers and defects in aids to navigation may also be made to the appropriate Singapore Port Operations Control Station on VHF Channels 10, 12, 14, 68 or 73.

HYDROGRAPHIC NOTE

To:

Chief Hydrographer
Hydrographic Department
Maritime and Port Authority of Singapore
460 Alexandra Road PSA Building #20-00
Singapore 119963

Tel : (65) 6375 1227
Fax : (65) 6278 7646
Email : hydrographic@mpa.gov.sg

Sender's Contact Details :

Date :

Name of Vessel :

Address of Sender :

Tel : Fax :

Email :

Nature of Observation :

General Location :

Subject :

Position : Lat. Long.

Charts Used :

Date & Time of Observation :

Details :

.....

.....

Attachment :

Equipment Used :

Type of Position Fixing : GPS / DGPS Others :

Type of Echo Sounder :

Name and Signature :

Ship's/Company's stamp :