



SINGAPOREAN NOTICES TO MARINERS

SECTION	CONTENT	Page
I	Index of Charts & Publications	128
II	New Publications	134
	Notices to Mariners and Chart Corrections	137
	Temporary and Preliminary Notices	139
III	Navigational Information	141
	Amendments to Publications	143
IV	Reprint of Radio Navigational Warnings	145
V	Reprint of Admiralty Notices to Mariners for Dual Badged Charts	147

The monthly Notices to Mariners contain corrective information affecting charts published by the Hydrographic Department, Maritime and Port Authority of Singapore. The information contained in these Notices should be updated on the charts affected. Notices under Section II apply only to the particular Singaporean Chart(s) indicated.

Mariners are requested to notify the Chief Hydrographer, Maritime and Port Authority of Singapore, immediately on the discovery of new dangers or suspected dangers to navigation and of changes or defects in aids to navigation. See Hydrographic Note on back page.

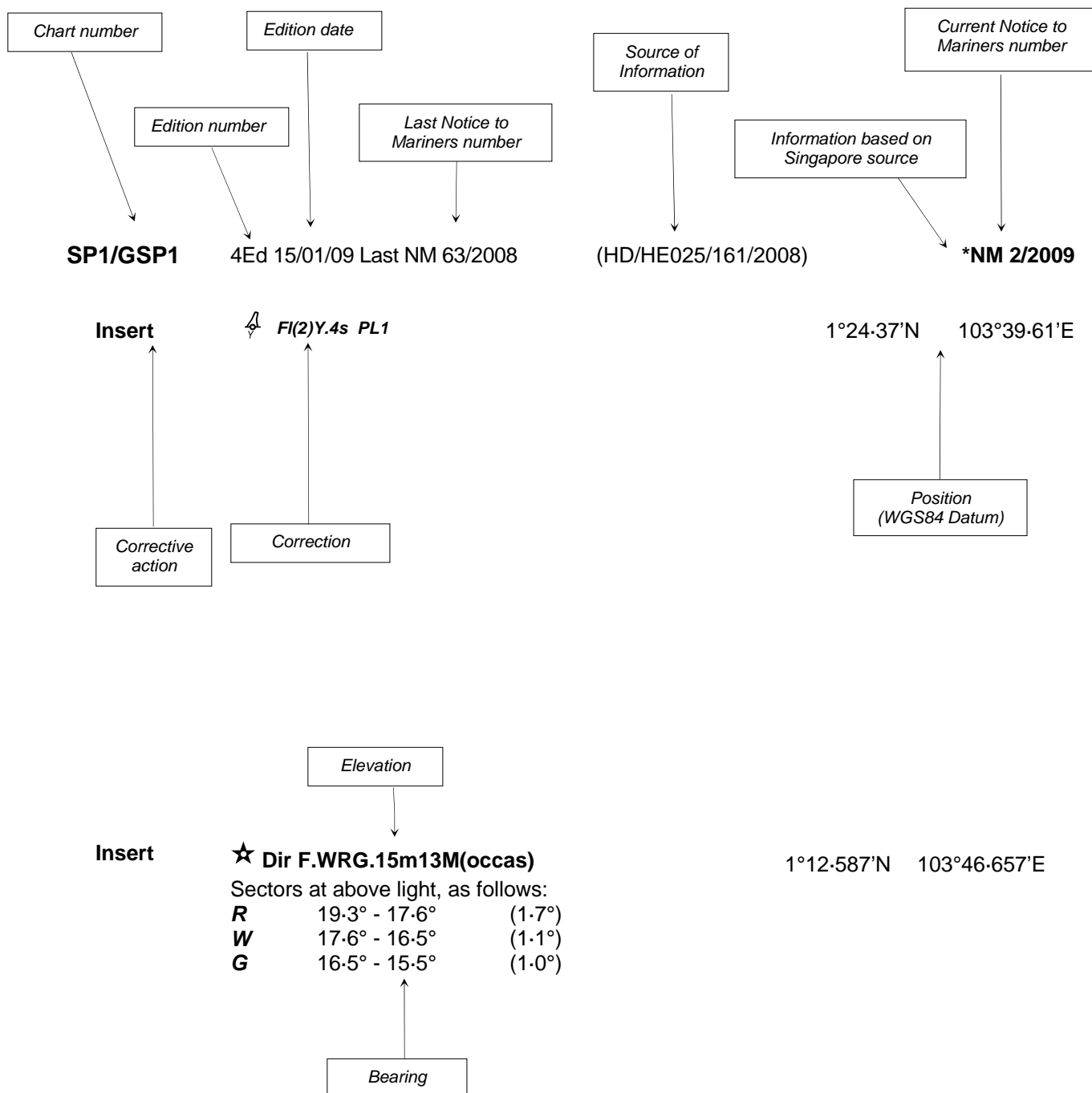
The monthly Singaporean Notices to Mariners can be accessed directly from the MPA website:
[http://www.mpa.gov.sg/sites/port_and_shipping/circulars_and_notices/singapore_notices_to_mariners\(ntm\).page](http://www.mpa.gov.sg/sites/port_and_shipping/circulars_and_notices/singapore_notices_to_mariners(ntm).page)

This service is offered free of charge.

Hydrographic Department
Maritime and Port Authority of Singapore
460 Alexandra Road
PSA Building #20-00
Singapore 119963
Tel: (65) 6375 1227
Fax: (65) 6278 7646

EXPLANATION OF FORMAT

The elements of a typical chart correction are explained below.



Notes:

a) Notice to Mariners number followed by:

T indicates a Temporary Notice (eg. ***NM 1T/2009**).

P indicates a Preliminary Notice (eg. ***NM 1P/2009**).

b) Bearings are referred to True Compass in degrees clockwise from 000° to 359°. Bearings related to lights are from seaward.

c) Heights and elevations are above Mean High Water Springs.

I
INDEX OF CHARTS AND PUBLICATIONS

DESCRIPTION	NOTICE NO.	PAGE NO.
Index of Singaporean Charts	-	128
Singaporean Charts Catalogue	-	129
Index of Dual Badged Charts	-	130
Dual Badged Charts Catalogue	-	131
Hydrographic Publications	-	132
Index of Singapore Electronic Navigational Charts (ENC)	-	133
Index of Singapore ENC 2009	-	133
New Edition Dual Badged Charts	-	134
Numerical Index to Notices to Mariners of 2009	*60	137
Singaporean Chart SP1/GSP1	*61	137
Singaporean Chart 201	62	137
Singaporean Chart 202	62	137
Singaporean Chart 500	62, *63	137
Singaporean Chart 501	*63	138
Temporary and Preliminary Notices	64T, *65P 66P	139 140
Port Marine Notices	*67	141
Laying of operation (Asia America Gateway) Submarine cable - Singapore (Changi Ferry Terminal) to Singapore Strait Eastwards	*68	141
Submarine cable repair work - Singapore Strait	69	142
Singaporean Print On Demand (POD) Charts	*70	142

* Denotes information are based on Singapore source.

I
INDEX OF CHARTS AND PUBLICATIONS

DESCRIPTION	NOTICE NO.	PAGE NO.
Updating of Publication "SINGAPORE PORT INFORMATION 2008/2009 EDITION"	*71	143
Reprint of Radio Navigational Warnings	-	145
Reprint of Admiralty Notices to Mariners for Dual Badged Charts	-	147
Singapore Electronic Navigational Charts (ENC) Distributors	-	148

* Denotes information are based on Singapore source.

I

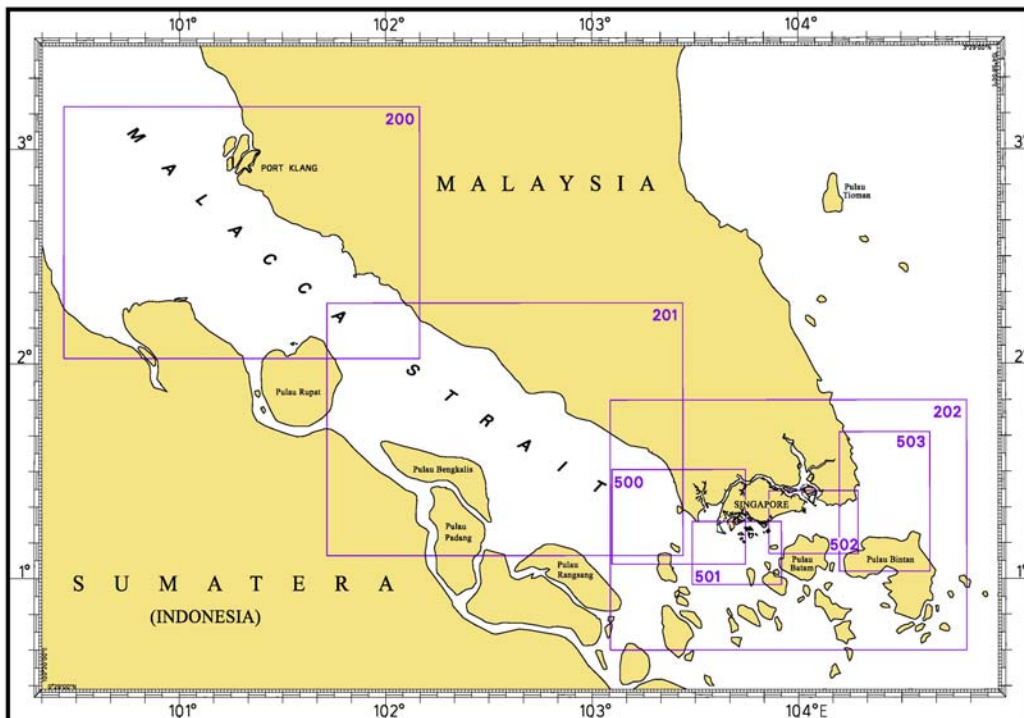
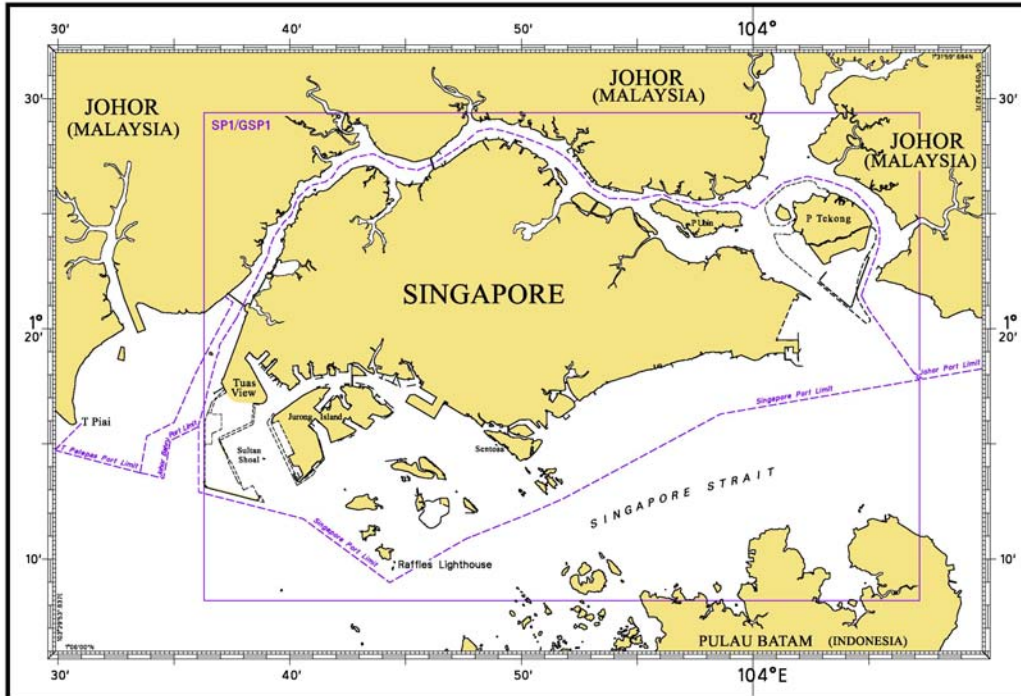
INDEX OF CHARTS AND PUBLICATIONS

NOTICE NO.	DESCRIPTION	PAGE NO.	NOTICE NO.	DESCRIPTION	PAGE NO.
-	Index of Singaporean Charts	128	69	Submarine cable repair work – Singapore Strait	142
-	Singaporean Charts Catalogue	129	*70	Singaporean Print On Demand (POD) Charts	142
-	Index of Dual Badged Charts	130	*71	Updating of Publication “SINGAPORE PORT INFORMATION 2008/2009 EDITION”	143
-	Dual Badged Charts Catalogue	131	-	Reprint of Radio Navigational Warnings	145
-	Hydrographic Publications	132	-	Reprint of Admiralty Notices to Mariners for Dual Badged Charts	147
-	Index of Singapore Electronic Navigational Charts (ENC)	133	-	Singapore Electronic Navigational Charts (ENC) Distributors	148
-	Index of Singapore ENC 2009	133			
-	New Edition Dual Badged Charts	134			
*60	Numerical Index to Notices to Mariners of 2009	137			
*61	SP1/GSP1	137			
62	201, 202, 500	137			
*63	500, 501	137, 138			
64T	Temporary and Preliminary Notices	139			
*65P	Temporary and Preliminary Notices	139			
66P	Temporary and Preliminary Notices	140			
*67	Port Marine Notices	141			
*68	Laying of operation (Asia America Gateway) Submarine cable - Singapore (Changi Ferry Terminal) to Singapore Strait Eastwards	141			

* Denotes information are based on Singapore source.

I INDEX OF CHARTS AND PUBLICATIONS

INDEX OF SINGAPOREAN CHARTS



Notes:

Updated SINGAPOREAN Charts (excluding Charts SP1/GSP1) are available through our Print On Demand (POD) Chart Service. For more information, refer to Section III – Navigational Information and these charts can be purchased from our authorised Chart Agents:

DPM (Singapore) Pte Ltd, E.W. Liner Charts & Publications Pte Ltd and Motion Smith.

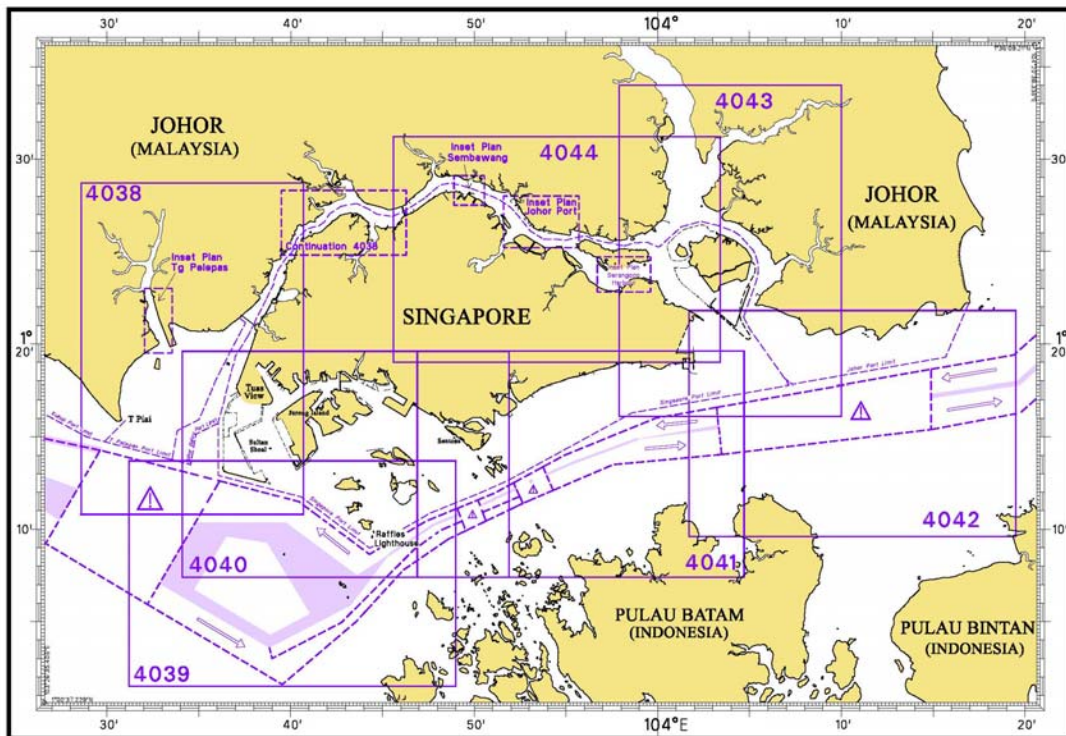
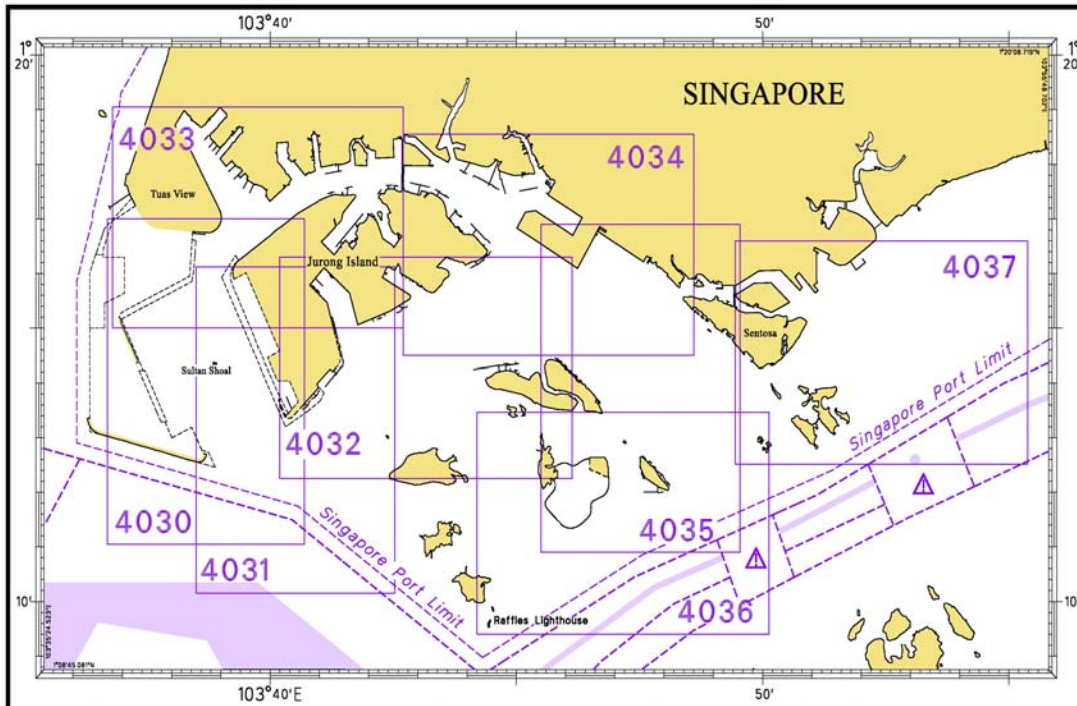
I
INDEX OF CHARTS AND PUBLICATIONS

SINGAPOREAN CHARTS CATALOGUE

Chart No.	Chart Title	Scale 1:	Date Published of Latest Edition
1	Symbols and Abbreviations used on Singaporean produced Nautical Charts – July 2001	-	-
Charts for Small Craft	Singapore Strait & Adjacent Waterways	Various	15/01/09
SP1	Anchorage and Aids to Navigation	60 000	15/01/09
GSP1	Anchorage and Aids to Navigation (with Area Reference)	60 000	15/01/09
200	Malacca Strait - Port Klang to Tanjung Keling	200 000	30/11/05
201	Malacca Strait - Tanjung Keling to Western Entrance of Singapore Strait	200 000	05/10/07
202	Singapore Strait	200 000	19/10/06
500	Malacca and Singapore Straits – Pulau Pisang to Raffles Lighthouse	75 000	30/08/07
501	Singapore Strait – Western Part	50 000	21/09/06
502	Singapore Strait - Eastern Part	50 000	25/09/08
503	South China Sea - Eastern Approaches and Entrance to Singapore Strait	75 000	15/09/08

I
INDEX OF CHARTS AND PUBLICATIONS

INDEX OF DUAL BADGED CHARTS



I
INDEX OF CHARTS AND PUBLICATIONS

DUAL BADGED CHARTS CATALOGUE

Chart No.	Chart Title	Scale 1:	Date Published of Latest Edition
4030	Port of Singapore West Jurong Anchorages and Temasek Fairway	10 000	22/05/08
4031	Port of Singapore Western Approaches to Jurong Island	10 000	22/05/08
4032	Port of Singapore Sinki Fairway	10 000	22/05/08
4033	Port of Singapore Tuas Bay, West Jurong Channel and Pesek Basin	10 000	22/05/08
4034	Port of Singapore East Jurong Channel, Pasir Panjang Terminal and West Keppel Fairway	10 000	31/01/08
4035	Port of Singapore Western Anchorages, Jong Fairway and Cruise Bay	10 000	31/01/08
4036	Port of Singapore Raffles Lighthouse to The Sisters	10 000	21/05/09
4037	Port of Singapore Keppel Harbour, Tanjong Pagar Terminal and Approaches	10 000	21/05/09
4038	Johor Strait – Western Part	30 000	17/08/06
4039	Western Approaches to Main Strait	30 000	23/07/09
4040	Singapore, Indonesia and Malaysia, Tuas View to Pulau Sakijang Bendera (S. John's Island)	30 000	23/07/09
4041	Singapore and Indonesia, Pulau Sebarok to Changi	30 000	23/07/09

I
INDEX OF CHARTS AND PUBLICATIONS

DUAL BADGED CHARTS CATALOGUE

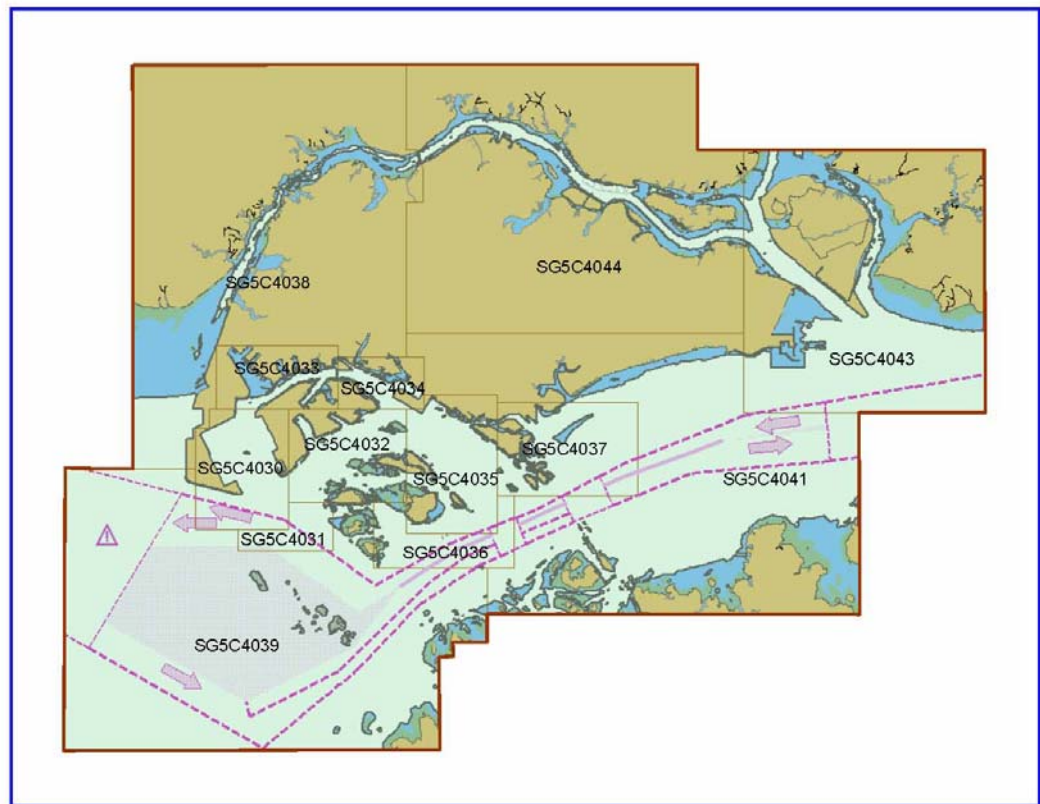
4042	Indonesia, Malaysia and Singapore, Changi to Pulau Mungging and Tanjung Buntan to Tanjung Tondang	30 000	20/05/04
4043	Kuala Johor and Sungai Johor	30 000	23/07/09
4044	Johor Strait - Eastern Part	30 000	23/07/09

INDEX OF SINGAPOREAN PUBLICATIONS**HYDROGRAPHIC PUBLICATIONS**

Item	Title
1	Year 2009 Singapore Tide Tables
2	Singapore Port Information 2008/2009 Edition

I INDEX OF CHARTS AND PUBLICATIONS

INDEX OF SINGAPORE ELECTRONIC NAVIGATIONAL CHARTS (ENC)



INDEX OF SINGAPORE ENC 2009

Cells Name	Cell Descriptions	Latitude	Longitude
SG5C4030.000	West Jurong Anchorages and Temasek Fairway	1°11.050'N 1°16.300'N	103°36.700'E 103°40.640'E
SG5C4031.000	Western Approaches to Jurong Island	1°10.150'N 1°12.250'N	103°38.500'E 103°42.530'E
SG5C4032.000	Sinki Fairway	1°12.250'N 1°16.300'N	103°40.640'E 103°45.580'E
SG5C4033.000	Tuas Bay, West Jurong Channel and Pesek Basin	1°16.300'N 1°19.050'N	103°37.600'E 103°42.700'E
SG5C4034.000	East Jurong Channel, Pasir Panjang Terminal and West Keppel Fairway	1°16.300'N 1°18.550'N	103°42.700'E 103°46.356'E
SG5C4035.000	Western Anchorages, Jong Fairway and Cruise Bay	1°10.900'N 1°16.900'N	103°45.580'E 103°49.425'E
SG5C4036.000	Raffles Lighthouse to The Sisters	1°09.400'N 1°12.520'N	103°44.200'E 103°50.130'E
SG5C4037.000	Keppel Harbour, Tanjong Pagar Terminal and Approaches	1°12.520'N 1°16.590'N	103°49.425'E 103°55.340'E
SG5C4038.000	Johor Strait – Western Part	1°13.700'N 1°31.200'N	103°34.100'E 103°46.300'E
SG5C4039.000	Western Approaches to Main Strait	1°01.500'N 1°13.700'N	103°31.200'E 103°49.000'E
SG5C4041.000	Pulau Sebarok to Changi	1°07.400'N 1°19.600'N	103°45.600'E 103°04.700'E
SG5C4043.000	Kuala Johor and Sungai Johor	1°16.100'N 1°27.500'N	103°59.800'E 104°10.000'E
SG5C4044.000	Johor Strait – Eastern Part	1°19.600'N 1°31.200'N	103°45.600'E 103°59.800'E

II NEW PUBLICATIONS

NEW EDITION DUAL BADGED CHARTS PUBLISHED ON 21 MAY 2009

The following new edition charts are jointly produced by MPA, Hydrographic Department and the United Kingdom Hydrographic Office :

Chart Number	:	4036
Title	:	Port of Singapore – Raffles Lighthouse To The Sisters
Coverage	:	Lat 1° 09.40' N 1° 13.47' N Long 103° 44.20' E 103° 50.13' E
Scale	:	1 : 10 000
Date Published	:	21 May 2009
Size of Chart	:	1100.0 X 750.1mm
Remarks	:	This new edition includes updated surveys covering these areas : <ul style="list-style-type: none"> • Southern Fairway • Jong Fairway • Western Anchorages • North of Pulau Semakau • Approaches to Shell SBM

The existing chart of the same number published on 5 July 2007 is superseded.

Chart Number	:	4037
Title	:	Port of Singapore – Keppel Harbour, Tanjong Pagar Terminal and Approaches
Coverage	:	Lat 1° 12.52' N 1° 16.59' N Long 103° 49.40' E 103° 55.34' E
Scale	:	1 : 10 000
Date Published	:	21 May 2009
Size of Chart	:	1101.8 X 750.1mm
Remarks	:	This new edition includes updated surveys covering these areas : <ul style="list-style-type: none"> • East Keppel Fairway • Eastern Fairway • Southern Fairway • Sisters Fairway • Eastern Anchorage • East of Brani Causeway • Sentosa Cove • South of Marina South

The existing chart of the same number published on 24 May 2007 is superseded.

II NEW PUBLICATIONS

NEW EDITION DUAL BADGED CHARTS TO BE PUBLISHED ON 23 JULY 2009

The following new edition charts are jointly produced by MPA, Hydrographic Department and the United Kingdom Hydrographic Office :

Chart Number : 4039
 Title : Indonesia, Singapore and Malaysia
 Western Approaches to Main Strait
 Coverage : Lat 1° 01.50' N 1° 13.70' N
 Long 103° 31.20' E 103° 49.00' E
 Scale : 1 : 30 000
 Date Published : 23 July 2009
 Size of Chart : 1100.7 x 749.5mm
 Remarks : This new edition includes updated surveys covering these areas :
 • South of Tuas View Extension
 • Shell SBM
 • South of Pulau Bukom
 • Selat Sinki

The existing chart of the same number published on 29 March 2007 is superseded.

Chart Number : 4040
 Title : Singapore, Indonesia and Malaysia
 Tuas View to Pulau Sakijang Bendera
 (S. John's Island)
 Coverage : Lat 1°07.40'N 1°19.60'N
 Long 103°34.10'E 103°51.90'E
 Scale : 1 : 30 000
 Date Published : 23 July 2009
 Size of Chart : 1100.6 X 749.5 mm
 Remarks : This new edition includes updated surveys covering these areas :
 • South of Tuas View Extension
 • Shell SBM
 • South of Pulau Bukom
 • West Keppel Fairway
 • Sisters Fairway
 • Southern Fairway
 • West of Sentosa
 • Approaches to Jong Fairway
 • Selat Sinki

The existing chart of the same number published on 24 July 2008 is superseded.

II NEW PUBLICATIONS

NEW EDITION DUAL BADGED CHARTS TO BE PUBLISHED ON 23 JULY 2009

The following new edition charts are jointly produced by MPA, Hydrographic Department and the United Kingdom Hydrographic Office :

Chart Number : 4041
 Title : Singapore and Indonesia
 Pulau Sebarok to Changi
 Coverage : Lat 1° 07.40' N 1° 19.60' N
 Long 103° 46.90' E 104° 04.70' E
 Scale : 1 : 30 000
 Date Published : 23 July 2009
 Size of Chart : 1100.6 x 749.5 mm
 Remarks : This new edition includes updated surveys covering these areas :

- Shell SBM
- Southern Fairway
- East Keppel Fairway
- West of Sentosa
- Approaches to the Eastern Anchorages
- Changi Prohibited Area
- Eastern Cable Corridor

The existing chart of the same number published on 24 July 2008 is superseded.

Chart Number : 4043
 Title : Malaysia and Singapore
 Kuala Johor and Sungai Johor
 Coverage : Lat 1°16.10' N 1°34.00' N
 Long 103°57.90' E 104°10.00' E
 Scale : 1 : 30 000
 Date Published : 23 July 2009
 Size of Chart : 748.1 X 1099.6 mm
 Remarks : This new edition includes updated surveys covering these areas :

- Around Pulau Tekong
- Kuala Johor
- North of Pulau Ubin

The existing chart of the same number published on 5 July 07 is superseded.

Chart Number : 4044
 Title : Singapore and Malaysia
 Johor Strait, Eastern Part
 Coverage : Lat 1° 19.00' N 1° 31.20' N
 Long 103° 45.60' E 104° 03.40' E
 Scale : 1 : 30 000
 Date Published : 23 July 2009
 Size of Chart : 1100.5 x 749.5 mm
 Remarks : This new edition includes updated surveys covering these areas :



- Johor Causeway to Serangoon Harbour
- Kuala Johor
- North of Pulau Ubin

The existing chart of the same number published on 22 Feb 07 is superseded.

II
NOTICES TO MARINERS AND CHART CORRECTIONS

*(NM 60/2009) NUMERICAL INDEX TO NOTICES TO MARINERS OF 2009 (1 TO 59)

CHART NO.	PUBLISHED	YEAR	NOTICES NO.
SP1, GSP1	4Ed 15/01/09	2009	13-14-26-40-41-42-43-50
200	2Ed 30/11/05	2009	2-3-4-15-16-17-51-52
201	3Ed 05/10/07	2009	17-18-19-27
202	5Ed 19/10/06	2009	5-6-20-28-34-35-53
500	5Ed 30/08/07	2009	-
501	4Ed 21/09/06	2009	5-7-44
502	4Ed 25/09/08	2009	14-53-54
503	3Ed 25/09/08	2009	53-54

SP1/GSP1	4Ed 15/01/09 Last NM 50/2009	(HD/HE025/69/2009)	*NM 61/2009
Substitute	 Fl. Y.5s for  Fl. Y.5s		1°17-95'N 103°43-90'E

201	3Ed 5/10/07 Last NM 27/2009	Royal Malaysian Navy NM Edition 5 of 2009 (Section IV)	NM 62/2009
Substitute	FI(3)15s26m16M for FI(3)15s26m15M		1°25-20'N 103°11-20'E


202	5Ed 19/10/06 Last NM 53/2009	Royal Malaysian Navy NM Edition 5 of 2009 (Section IV)	NM 62/2009
Substitute	FI(3)15s26m16M for FI(3)15s26m15M		1°25-20'N 103°11-20'E

500	5Ed 30/08/07 Last NM 133/2008	Royal Malaysian Navy NM Edition 5 of 2009 (Section IV)	NM 62/2009
Substitute	FI(3)15s26m16M for FI(3)15s26m15M		1°25-20'N 103°11-20'E
		(HD/HY/L00103909)	*NM 63/2009
Substitute	depth 21₆ for 20₇		1°11-98'N 103°38-41'E

II
NOTICES TO MARINERS AND CHART CORRECTIONS

501	4Ed 21/09/06 Last NM 44/2009	(HD/HY/L00103909)	*NM 63/2009
Substitute	depth <i>21</i> ₆ for <i>20</i> ₇		1°11-98'N 103°38-41'E

II TEMPORARY AND PRELIMINARY NOTICES

200 2Ed 30/11/05 Last 52/2009 (Indonesian NM 19/165(T)/2009) **NM 64T/2009**
 Insert  **Q(3)10s (inoperative)** 2°23.17'N 101°36.00'E

VIBRO CORING SOUTH OF THE SINGAPORE PORT LIMIT AND IN THE WESTBOUND LANE OF THE TRAFFIC SEPARATION SCHEME IN THE SINGAPORE STRAIT

*(NM 65P/2009)

Purpose

Vibro coring operations will be carried out south of the Singapore Port Limit and in the westbound lane of the Traffic Separation Scheme.

Date

With effect from 1 July 2009 until 31 July 2009.

Duration

Day light operation 0700 to 1800 hours, 7 days a week.

Working Area

Within an area bounded by the following coordinates south of the Singapore Port Limit and in the area within the westbound lane of the Traffic Separation Scheme (please see chart attached):

WGS 84 Datum		
Points	Lat. (N)	Long. (E)
1	1°15.83'	103°57.74'
2	1°14.74'	103°58.19'
3	1°13.25'	103°54.42'
4	1°13.88'	103°54.13'

Vessels

Vessels equipped with Vibro Core Sampler will be deployed for the work.

Navigational Broadcast

Navigational warning broadcast will be promulgated on VHF CH 09 and NAVTEX to inform vessels of the seabed material sampling operation. Mariners are to maintain a listening watch for the above safety information.

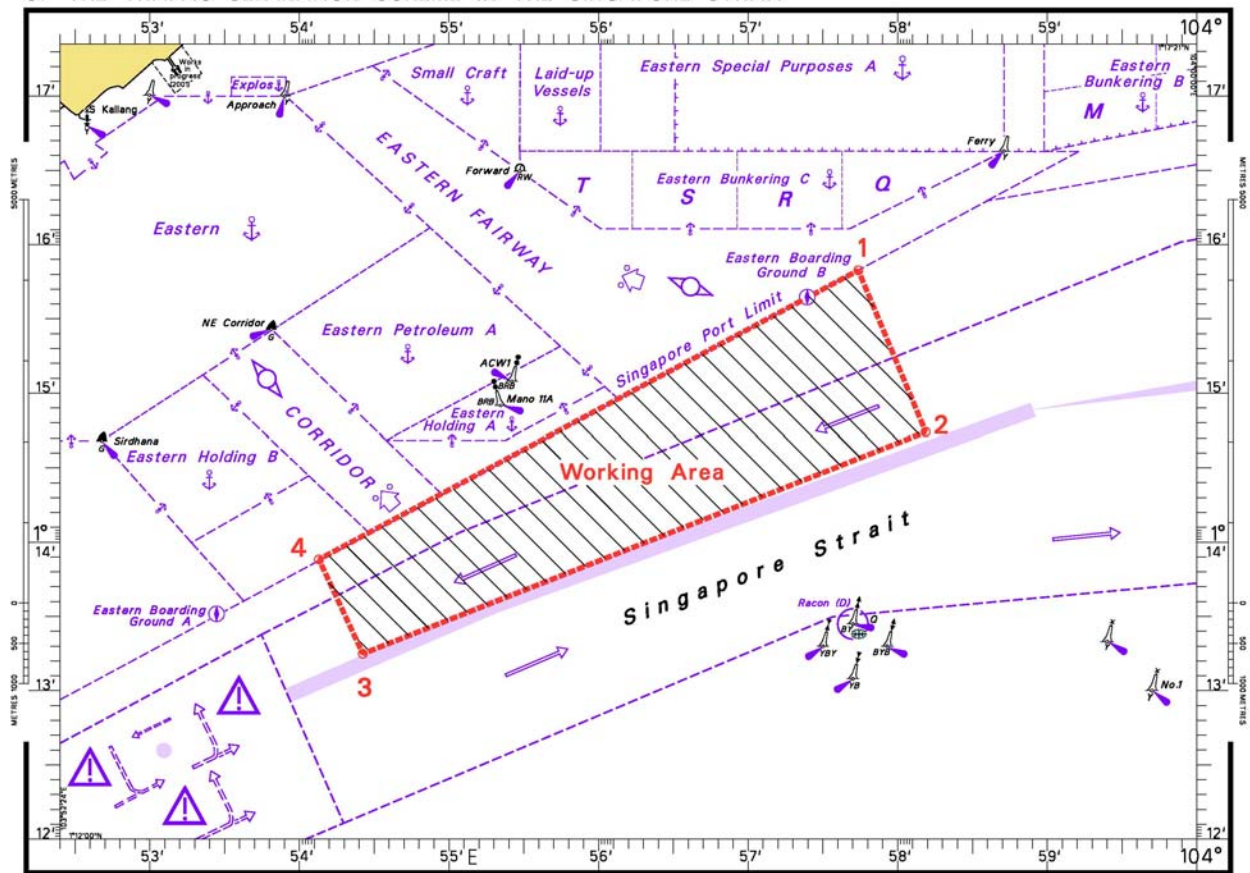
Caution

Mariners are advised to navigate with caution and proceed at slow speed when approaching the area.

This notice supersedes SNM 6/55P/2009
 Charts affected: SP1/GSP1, 202, 501, 502, 4037 & 4041
 Source: HD/DB67/4/2009

II TEMPORARY AND PRELIMINARY NOTICES

VIBRO CORING SOUTH OF THE SINGAPORE PORT LIMIT AND IN THE WESTBOUND LANE OF THE TRAFFIC SEPARATION SCHEME IN THE SINGAPORE STRAIT



(NM 66P/2009) MALAYSIA – Peninsular Malaysia, West Coast – Pelabuhan Klang – Selat Klang Selatan – Pelabuhan Barat (West Port) – Berths.

1. Four new berths have been constructed at Pelabuhan Barat (West Port) in the vicinity of $2^{\circ} 55.7'N$, $101^{\circ} 17.5'E$. They are consecutively numbered 13 to 16 from north-east to south-west.
2. A new liquid bulk terminal has been constructed at Pulau Indah in the vicinity of $2^{\circ} 58.4'N$, $101^{\circ} 19.2'E$. Berths 1, 2 and 3 have been renumbered from 1 to 3 from south-west to north-east. The new terminal is number 4.

(All positions are referred to WGS84 Datum)

Source : Klang Port Authority
(Admiralty Notices No. 25/3084(P)/2009)

Chart affected : 200

III NAVIGATIONAL INFORMATION

*(NM 67/2009) PORT MARINE NOTICES

The following PMNs have been shortlisted, as they would be of particular interest to mariners.

These notices can be accessed directly from MPA website:

http://www.mpa.gov.sg/sites/port_and_shipping/circulars_and_notices/port_marine_notices.page

PMN No.	Subject
61/2009	Reclamation at Pulau Tekong.
64/2009	Dredging works at East Keppel Fairway and its vicinity.
66/2009	Temporary Staging Ground at Sentosa.
72/2009	Reclamation of Jurong Island Phase 4 and Tuas View Extension.
75/2009	Dredging and construction of Berths (P16 to P17) and stacking/storage yards at Pasir Panjang Terminal.

*(NM 68/2009) LAYING OF OPERATION (ASIA AMERICA GATEWAY) SUBMARINE CABLE – SINGAPORE (CHANGI FERRY TERMINAL) TO SINGAPORE STRAIT EASTWARDS

Remark : Repair of AAG S1B submarine cable operation.

Date : With effect from 1 July 09 to 31 August 09.

1. Cable laying and associated operations are in progress between the following positions (in WGS84) :

1°17.132'N	104°09.234'E
1°15.910'N	104°10.421'E
1°15.825'N	104°11.118'E
1°15.617'N	104°11.712'E
1°15.124'N	104°11.973'E
1°15.454'N	104°14.894'E
1°15.920'N	104°17.538'E
1°16.735'N	104°19.000'E
1°16.591'N	104°19.207'E
1°17.000'N	104°20.000'E
1°17.500'N	104°21.000'E
1°17.825'N	104°21.330'E
1°18.500'N	104°21.650'E
1°19.500'N	104°22.500'E
1°20.000'N	104°23.000'E
1°21.658'N	104°25.072'E
1°23.199'N	104°25.072'E

2. Charts affected : 202, 502 and 503
3. Mariners are advised
(a) to navigate with caution
(b) not to anchor or trawl in the vicinity of the cable route

III NAVIGATIONAL INFORMATION

Source : HD/DB67/003/2009

(NM 69/2009) SUBMARINE CABLE REPAIR WORK – SINGAPORE STRAIT

Remark : Repair of VNSL Intra-Asia Segment 1 submarine cable operation.

Date : With effect from 22 June 09 to 22 July 09.

1. Cable repair are in progress within the working area bounded by the following positions (WGS84).

1°17.7'N	104°09.3'E to
1°17.7'N	104°11.5'E to
1°16.8'N	104°11.5'E to
1°16.8'N	104°09.3'E

2. Charts affected : 202, 502 and 503

3. Mariners are advised
 (a) to navigate with caution
 (b) not to anchor or trawl in the vicinity of the cable route

Source : Marine Department Peninsular Malaysia Notice to Mariners No. 32T/2009.

***(NM 70/2009) SINGAPOREAN PRINT ON DEMAND (POD) CHARTS**

Print On Demand (POD) Charts are the most up-to-date paper nautical charts printed for navigational use. These nautical charts are produced in accordance with the International Hydrographic Organisation (IHO) charting specifications. These official nautical charts are continually updated to the latest Notices to Mariners before they are printed and sold to users.

These POD Charts include 200, 201, 202, 500, 501, 502, 503.

BENEFITS TO OUR CUSTOMERS

Convenience

Customers need not make numerous hand corrections to the nautical charts before use. In addition the updated POD Charts are more accurate and reliable than offset printed charts with hand corrections.

Clarity

Clarity in the presentation of updated information as compared to lithographic printed charts, where in some cases there are several overlapping corrections over existing information.

Coverage

The POD Charts cover the Malacca and Singapore Straits, from One Fathom Bank to Horsburgh Lighthouse.

III
AMENDMENTS TO PUBLICATIONS

***(NM 71/2009) UPDATING OF PUBLICATION “SINGAPORE PORT INFORMATION 2008/2009 EDITION”**

1. Page 133 – Item 1

TANJONG PAGAR TERMINAL (PSA Corporation Ltd) (1°16.0'N, 103°51.0'E)

Insert the following :

Berth	Depth Alongside (Year Surveyed)	
	Delete	Insert
T2	13.6m(2003)	13.6m(2009)
T3	13.6m(2003)	13.6m(2009)

Source : HD/HY Code B00106609 and B00105409

2. Page 134 - Item 2

KEPPEL TERMINAL (PSA Corporation Ltd) (1°16.0'N, 103°50.0'E)

Insert the following :

Berth	Depth Alongside (Year Surveyed)	
	Delete	Insert
K11	14.2m(2002)	14.2m(2009)
K18	12.0m(2002)	12.0m(2009)

Source : HD/HY Code B00105909 and B00105809

3. Page 136 - Item 3

BRANI TERMINAL (PSA Corporation Ltd) (1°15.7'N, 103°50.2'E)

Insert the following :

Berth	Depth Alongside (Year Surveyed)	
	Delete	Insert
B7	14.5m(2007)	15.0m(2009)
B8	14.4(2003)	15.0m(2009)
B9	12.1m(2007)	12.4m(2009)

Source : HD/HY Code B00104509 and B00105109

4. Page 139 - Item 7

PASIR PANJANG TERMINAL (PSA Corporation Ltd) (1°17.2'N, 103°46.1'E)

Insert the following :

Berth	Length of Berth	Depth Alongside (Year Surveyed)	Controlling Depth In Approaches
P15	332m	16.0m(2009)	-

Source : HD/HY Code C00106509

III
AMENDMENTS TO PUBLICATIONS

5. Page 154 – Item 42

CAFHI JETTY – TANJONG CHANGI (1°23.4'N, 103°59.9'E)

Insert the following :

Berth	Depth Alongside (Year Surveyed)	
	Delete	Insert
CAFHI Jetty Berth 1	7.1m(2008)	8.2m(2009)
CAFHI Jetty Berth 2	9.5m(2008)	9.5m(2009)

Source : HD/HY Code N00105509

IV
REPRINT OF RADIO NAVIGATIONAL WARNINGS

TT026 (AMENDED ON 21 APR 09)
TUAS RECLAMATION WORKING AREAS AT WESTERN PART OF SINGAPORE PORT ARE MARKED BY FL.WG BUOYS (REF.PMN: 47/2009).

1	01°15.163'N	103°36.980'E	-
2a	01°13.675'N	103°37.687'E	-
3a	01°13.513'N	103°37.333'E	-
4	01°13.315'N	103°37.428'E	-
5	01°13.291'N	103°37.870'E	-
6	01°12.916'N	103°38.049'E	-
7	01°12.734'N	103°38.754'E	-
8	01°12.458'N	103°38.891'E	BYB PILLAR / VQ(3) 5S/PKHDB-24
9	01°13.117'N	103°36.342'E	-
10	01°13.652'N	103°36.342'E	-
11	01°13.723'N	103°36.741'E	-
12	01°14.370'N	103°36.647'E	-
13	01°14.370'N	103°36.342'E	-
14	01°14.997'N	103°36.342'E	-
15	01°14.997'N	103°36.635'E	-

MARINERS ARE ADVISED TO PLOT THE WORKING AREAS ON APPROPRIATE CHARTS.

TT173
VSLs IN EAST JOHOR STRAIT ARE ADVISED TO NAVIGATE WITH CAUTION WHEN NEAR THE PROJECT AREAS OFF PU.TEKONG, PU.SERANGOON, CHANGI AND MALANG PAPAN AS SHALLOW WATER AREAS EXIST. VSLs ARE ADVISED TO KEEP LOOKOUT FOR TUGS AND BARGES NAVIGATING NEAR THE PROJECT AREAS AND PASSENGER FERRIES CROSSING BETWEEN CHANGI AND PULAU TEKONG AND VICINITY OF PASIR GUDANG.

TT352
DAYMARK SIGNALS AT RAFFLES LIGHT HOUSE IS OUT OF ORDER.

TT611
A SHIP REPORTED LOSING HER PORT ANCHOR AND 12 SHACKLES OF ANCHOR CHAIN, IN APROX POSN 01°11.55'N 103°52.52'E, OFF BATU BERHENTI BEACON.

TT619
DREDGER GERARDUS MERCATOR/QUEEN OF PENTA OCEAN IS CONDUCTING DREDGING OPERATIONS IN POSITIONS BOUNDED BY COORDINATES:
01°15.827' N 103°57.737' E
01°14.865' N 103°58.134' E
01°13.298' N 103°54.401' E
01°13.884' N 103°54.131' E
VESSELS ARE ADVISED TO PROCEED AT SAFE SPEED AND TO GIVE A WIDE BERTH.

TT753
A SMALL WOODEN CARGO BOAT 10M IN LENGTH SUNK AT 01°15.73'N 103°32.1'E.

TT755 (AMENDED 180109 1314Z)
THE POSITION OF THE PROBABLE SUNKEN CRAFT IS LAT 01°18.71'N LONG 104°21.54'E WITH A LEAST DEPTH OF 57 METRES.

TT757
A TUG WAS REPORTED SUNK IN LAT 01°22.41'N LONG 104°23.15'E.

IV
REPRINT OF RADIO NAVIGATIONAL WARNINGS

TT779 (AMENDED 040420Z)

31 MAR 2009 1245UTC

SALVAGE OPERATIONS ARE IN PROGRESS BY TWO TUGBOATS AND A BARGE IN POSITION 01°22.34'N 104°23.30'E. VESSELS ARE ADVISED TO KEEP A LOOKOUT, PASS AT SLOW SPEED AND TO GIVE A WIDE BERTH.

TT791

REPORT OF SEA ROBBERY ON 01 JUNE 2009 AT 0245LT AT POSITION 01°19.23'N 104°15.89'E.

MARINERS ARE ADVISED TO TAKE PRECAUTIONS AND INCREASE LOOK-OUT FOR SUSPICIOUS SMALL FAST MOVING CRAFT APPROACHING THEIR VSLS. MARINERS TO MAINTAIN ANTI-PIRACY WATCH WHEN PASSING THROUGH THE AREA.

ISSUED BY SINGAPORE PORT OPERATIONS CONTROL CENTRE

(as at 14 June 2009)

V
REPRINT OF ADMIRALTY NOTICES TO MARINERS
FOR DUAL BADGED CHARTS

These notices can be accessed directly from UKHO Website:

<http://www.ukho.gov.uk/ProductsandServices/MaritimeSafety/Pages/NMPublic.aspx>

Nil

Updated to Admiralty Notices to Mariners Edition No. 26 of 2009 dated 26 June 2009.

SINGAPORE ELECTRONIC NAVIGATIONAL CHARTS (ENC) DISTRIBUTORS
Please approach any of the appointed distributors to purchase the Singapore ENC.

CONTACT PERSON	ADDRESS	TELEPHONE/FAX NO./EMAIL/WEBSITE
Mr Chong Chee Meng	DPM (Singapore) Pte Ltd 1 Maritime Square, #09-72 Harbour Front Centre, Singapore 099253	Tel. No.: +65 6270 4060 Fax No.: +65 6276 3858 Email: sales@dpmsingapore.com.sg Website: http://www.dpmsingapore.com.sg
Mr Hamzah Akhbar	Kelvin Hughes(S) Pte Ltd 8 Pandan Avenue #02-00, Singapore 609384	Tel. No.: +65 6545 9880 ext.24 Fax No.: +65 6545 8892 Email: hamzah.akhbar@khsing.com Website: http://www.kelvinhughes.co.uk
Mr Looi Keen Wai	Maritime Information Systems (MARIS) 52, Telok Blangah Road #01-06, Telok Blangah Centre, Singapore 058809	Tel. No.: +65 6276 1472 Fax No.: +65 6276 1473 Email: support@maris.sg Website: http://www.maris.no
Ms Kathrine Bjaroy	Maritime Information System AS (MARIS) Danholmen 25, 3128 Notteroy, Norway	Tel. No.: +47 33 30 42 50 Fax No.: +47 33 30 42 51 Email: roar.moe@maris.no Website: http://www.maris.no
Mr Dave Chow En Wai	Motion Smith 15 Jalan Kilang Barat #08-01/05 Frontech Centre Singapore 159357	Tel. No.: +65 6220 5098 Fax No.: +65 6225 4902 Email: sales@motsmith.com Website: http://www.motsmith.com
Mr Dominic Oliver	Transas Marine Pacific Pte Ltd 750C Chai Chee Road, #04-07, Technopark@Chai Chee, Singapore 469003	Tel. No.: +65 6443 3061 Fax No.: +65 6443 3025 Email: dominic@transas.com.sg Website: http://www.transas.com.sg
Mr Choy Kum Weng	Vector Services Pte Ltd 15 West Coast Highway, #02-14A Pasir Panjang Building Singapore 117861	Tel. No.: +65 6777 3602 Fax No.: +65 6777 9203 Email: kwchoy@pacific.net.sg
Mr George Arts	Marine Press of Canada 640 Rue St-Paul Ouest, Suite 300 Montreal (QC) Canada, H3C1L9	Tel. No.: (514) 866-8342 Fax No.: (514) 866-9050 Email : sales@marinepress.com Website: http://www.marinepress.com
Mr Thomas Wilde	HanseNautic GmbH Bade & Hornig, Eckardt & Messtorff Herrengaben 31 D-20459 Hamburg, Germany	Tel. No.: +49 40 374 811-32 Fax No.: +49 40 366 400 Email: wilde@hansenautic.de Website : http://www.HanseNautic.com
Ms Verena Borsos	SevenCs AG + Co. KG Ruhrstrasse 90, D-22761 Hamburg, Germany	Tel. No.: +49 40 853 58 6940 Fax No.: +49 40 853 58 6949 Email: sales@chartworld.com Website : http://www.sevencs.com
Mr Keiji Shimizu	Japan Hydrographic Association Electronic Charts Division Daiichi Sogo Bldg, 6F 1-6-6, Hanedakuko, Ota-ku, Tokyo 144-0041, Japan	Tel. No.: +81 3 5708 7093 Fax No.: +81 3 5708 7094 Email: enc-support@jha.jp Website: http://www.jha.jp

SINGAPORE ELECTRONIC NAVIGATIONAL CHARTS (ENC) DISTRIBUTORS
Please approach any of the appointed distributors to purchase the Singapore ENC.

CONTACT PERSON	ADDRESS	TELEPHONE/FAX NO./EMAIL/WEBSITE
Mr Jester-Kim	E_MLX Co. Ltd Ssangyong Research No.2 Lab Sinseong-Dong 100 Yusong-Gu, Daejoen 305-804, Korea (ROK)	Tel. No.: +82 42 865 1893 Fax No.: +82 42 865 1884 Email: Jester-kim@emlx.co.kr
Mr C G Kim	Korean Ocean Development Co. Ltd 2ND Fl, Dongbang Bldg, 25-4, 4 Ga Jungang-Dong, Jung-Gu, Busan, South Korea	Tel. No.: +82 514 66 0760 Fax No.: +82 514 65 9345 Email: sales@chartkorea.com Website: http://www.chartkorea.com
Mr Kjell Nodland	Jeppesen Norway A/S P.O Box 212 , N-4379 Egersund, Norway	Tel No.: +47 514 64 700 Fax No: +47 514 64 701 Email: enc@c-map.no Website : http://www.c-map.no
Ms Eva Hegland	PRIMAR STAVANGER Lervigsveien 36, P.O Box 60, N-4001 Stavanger, Norway	Tel. No.: +47 51 93 9500 Fax No.: +47 51 93 9501 Email: sales@primar.org Website : http://www.primar-stavanger.org
Mrs Christine Trickett	United Kingdom Hydrographic Office Admiralty Way, Taunton, Somerset TA1 2DN United Kingdom	Tel. No.: +44 (0)1823 337900 Fax No.: +44 (0)1823 284077 Emails: vargroup@ukho.gov.uk & christine.trickett@ukho.gov.uk Website: http://www.ukho.gov.uk

**Agents for the Maritime and Port Authority of Singapore
Nautical Charts and Publications**

Agent's name : **DPM (Singapore) Pte Ltd**
Address : 1 Maritime Square #09-72, HarbourFront Centre,
Singapore 099253
Telephone : (65) 6270 4060
Fax No. : (65) 6276 3858
E-mail : sales@dpmsingapore.com.sg
Internet Web Site : <http://www.dpmsingapore.com.sg>

Agent's name : **E.W. Liner Charts & Publications Pte Ltd**
Address : 102F, Pasir Panjang Road, #08-01, Citilink Warehouse Complex,
Singapore 118530
Telephone : (65) 6323 0773
Fax No. : (65) 6323 0775
E-mail : ewliner@singnet.com.sg
Internet Web Site : <http://www.ewliner.com>

Agent's name : **Motion Smith**
Address : 15 Jalan Kilang Barat
#08-01/05 Frontech Centre,
Singapore 159357
Telephone : (65) 6220 5098
: (After office hours: 8163 9993)
Fax No. : (65) 6225 4902
E-mail : sales@motsmith.com
Internet Web Site : <http://www.motsmith.com>

HYDROGRAPHIC NOTE - Instructions

1. Mariners are requested to notify the Chief Hydrographer, Maritime and Port Authority of Singapore, when new or suspected dangers to navigation are discovered, changes are observed in aids to navigation or where corrections to nautical publications may be necessary. Reports, which cannot be confirmed or are lacking in certain details should not be withheld.
2. Any ambiguities of time, positioning and depth should be stressed and any firm expectation of being able to check the information provided on a following voyage should be mentioned.
3. Mariners using satellite position fixing systems, eg. GPS, should provide details of equipment and datum used (where applicable). Where bearings (true or magnetic) are taken visually or by radar to fix a position, it should include more than two objects in order to provide a check on its accuracy. A position may also be defined by bearing and distance from a conspicuous object eg. beacon, lighthouse etc.
4. The note should include a tracing or a digital image of the chart used and the details should be clearly marked.
5. Echo sounders frequently register greater depths than the advertised maximum depth for the equipment, eg. a trace appearing at 50 metres may be in fact be 550 metres or even 1050 metres for equipment whose maximum depth is 500 metres. Erroneous depths caused by 2nd transmission error can usually be recognised by the following:
 - (a) the tracing being weaker than normal for the depth registered,
 - (b) the trace appearing to pass through the transmission line,
 - (c) the feathery nature of the trace.
6. An acknowledgement of receipt will be sent. When a Notice to Mariners is issued, the sender's vessel or name is quoted as the source unless the same information is also received in foreign Notices to Mariners.
7. Reports of shoals, uncharted dangers and defects in aids to navigation may also be made to the appropriate Singapore Port Operations Control Centre on VHF Channels 10, 12, 14, 68 or 73.

HYDROGRAPHIC NOTE

To:

Chief Hydrographer
Hydrographic Department
Maritime and Port Authority of Singapore
460 Alexandra Road PSA Building #20-00
Singapore 119963

Tel : (65) 6375 1227
Fax : (65) 6278 7646
Email : hydrographic@mpa.gov.sg

Sender's Contact Details :

Date :

Name of Vessel :

Address of Sender :

Tel : Fax :

Email :

Nature of Observation :

General Location :

Subject :

Position : Lat. Long.

Charts Used :

Date & Time of Observation :

Details :

.....

.....

Attachment :

Equipment Used :

Type of Position Fixing : GPS / DGPS Others :

Type of Echo Sounder :

Name and Signature :

Ship's/Company's stamp :