



M P A
S I N G A P O R E

SINGAPOREAN NOTICES TO MARINERS

| SECTION | CONTENT | Page |
|---------|---|------|
| I | Index of Charts & Publications | 123 |
| II | New Publications | 132 |
| | Notices to Mariners and Chart Corrections | 134 |
| | Temporary and Preliminary Notices | 136 |
| III | Navigational Information | 142 |
| | Amendments to Publications | 143 |
| IV | Reprint of Radio Navigational Warnings | 144 |
| V | Reprint of Admiralty Notices to Mariners for Dual Badged Charts | 145 |

The monthly Notices to Mariners contain corrective information affecting charts published by the Hydrographic Department, Maritime and Port Authority of Singapore. The information contained in these Notices should be updated on the charts affected. Notices under Section II apply only to the particular Singaporean Chart(s) indicated.

Mariners are requested to notify the Chief Hydrographer, Maritime and Port Authority of Singapore, immediately on the discovery of new dangers or suspected dangers to navigation and of changes or defects in aids to navigation. See Hydrographic Note on back page.

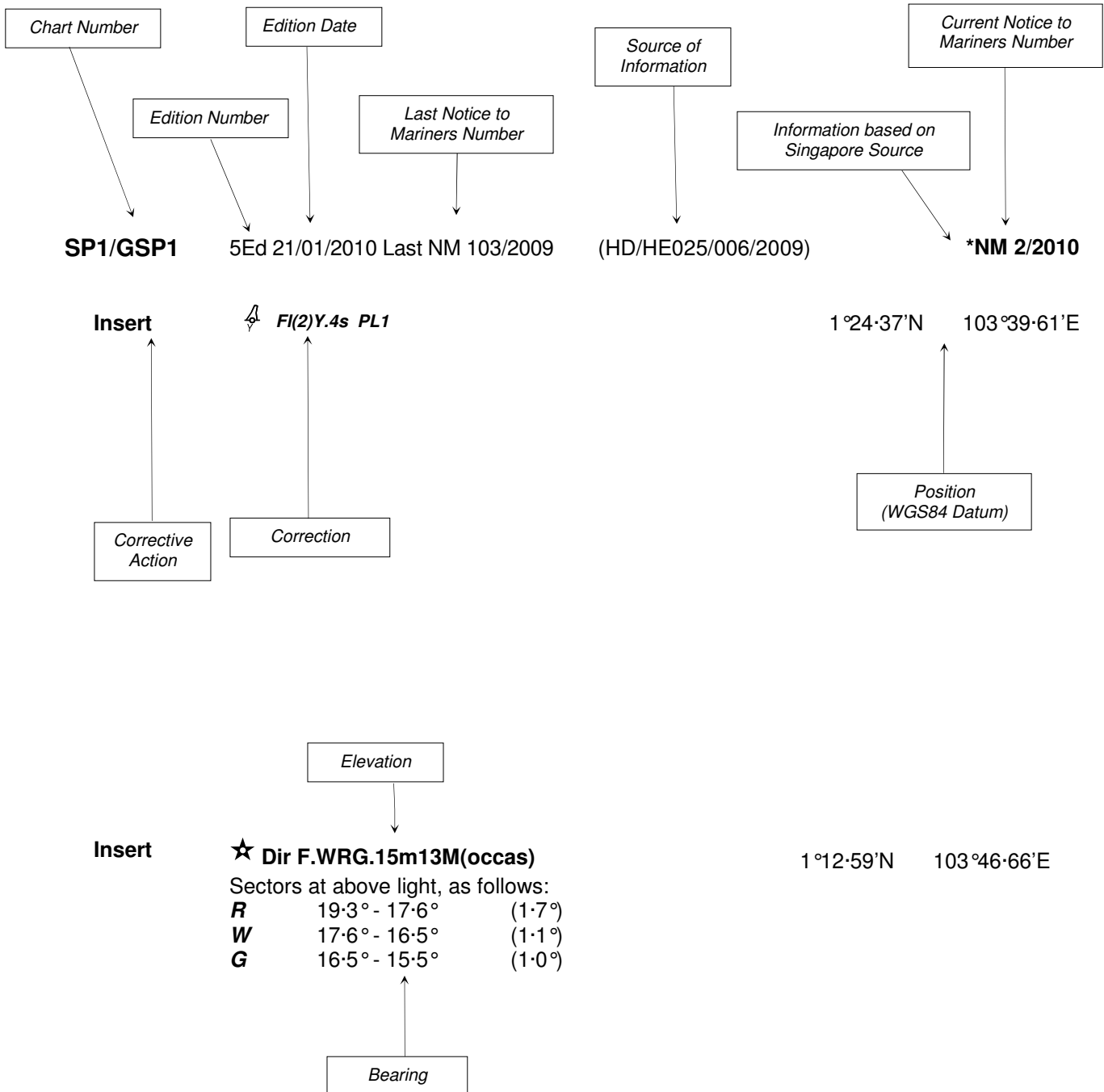
The monthly Singaporean Notices to Mariners can be accessed directly from the MPA website:
[http://www.mpa.gov.sg/sites/port_and_shipping/circulars_and_notices/singapore_notices_to_mariners\(ntm\).page](http://www.mpa.gov.sg/sites/port_and_shipping/circulars_and_notices/singapore_notices_to_mariners(ntm).page)

This service is offered free of charge.

Hydrographic Department
 Maritime and Port Authority of Singapore
 460 Alexandra Road
 PSA Building #20-00
 Singapore 119963
 Tel: (65) 6375 1227
 Fax: (65) 6278 7646

EXPLANATION OF FORMAT

The elements of a typical chart correction are explained below.



Notes:

- a) Notice to Mariners number followed by:
 - T** indicates a Temporary Notice (eg. ***NM 1T/2010**).
 - P** indicates a Preliminary Notice (eg. ***NM 3P/2010**).
- b) Bearings are true reckoned clockwise from 000° to 359° ; those relating to lights are from seaward.
- c) Heights and elevations are above Mean High Water Springs.

I
INDEX OF CHARTS AND PUBLICATIONS

INDEX OF AFFECTED CHARTS

| DESCRIPTION | NOTICE NO. | PAGE NO. |
|---|------------------------|------------|
| Index of Singaporean Charts | - | 126 |
| Singaporean Chart Catalogue | - | 127 |
| Index of Dual Badged Charts | - | 128 |
| Dual Badged Chart Catalogue | - | 129, 130 |
| Hydrographic Publications | - | 130 |
| Index of Singapore Electronic Navigational Chart (ENC) | - | 131 |
| New Edition Dual Badged Charts | - | 132, 133 |
| Numerical Index to Notices to Mariners of 2010 | *52 | 134 |
| Singaporean Chart SP1/GSP1 | *53, *54, *55, *56, 57 | 134 |
| Singaporean Chart 202 | 57, *58 | 135 |
| Singaporean Chart 500 | 57 | 135 |
| Singaporean Chart 502 | *59 | 135 |
| Singaporean Chart 503 | *58 | 135 |
| Temporary and Preliminary Notices | *60T, *61T, *62T, *63T | 136 to 141 |
| Port Marine Notices | *64 | 142 |
| Singaporean Print-On-Demand (POD) Charts | *65 | 142 |
| Amendments to Publications | *66 | 143 |
| Reprint of Radio Navigational Warnings | - | 144 |
| Reprint of Admiralty Notices to Mariners for Dual Badged Charts | - | 145 |

*Denotes information are based on Singaporean source.

I
INDEX OF CHARTS AND PUBLICATIONS

INDEX OF AFFECTED CHARTS

| DESCRIPTION | NOTICE NO. | PAGE NO. |
|--|-------------------|-----------------|
| Singapore Electronic Navigational Chart (ENC) Distributors | - | 146, 147 |
| Agents for the Maritime and Port Authority of Singapore Nautical Charts and Publications | - | 147 |

*Denotes information are based on Singaporean source.

I
INDEX OF CHARTS AND PUBLICATIONS

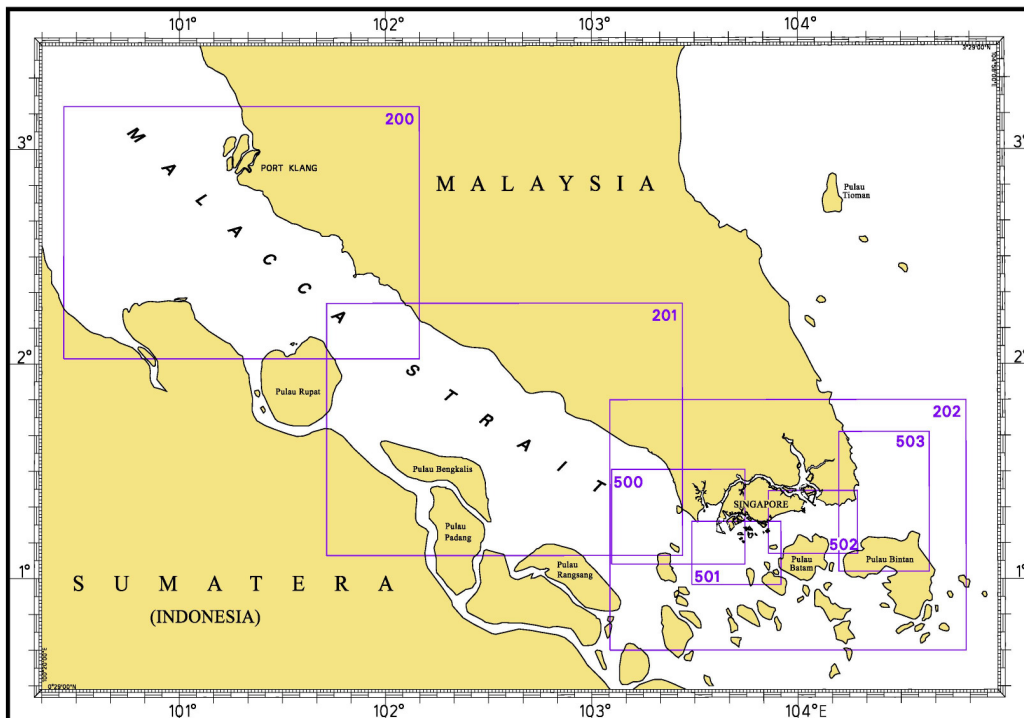
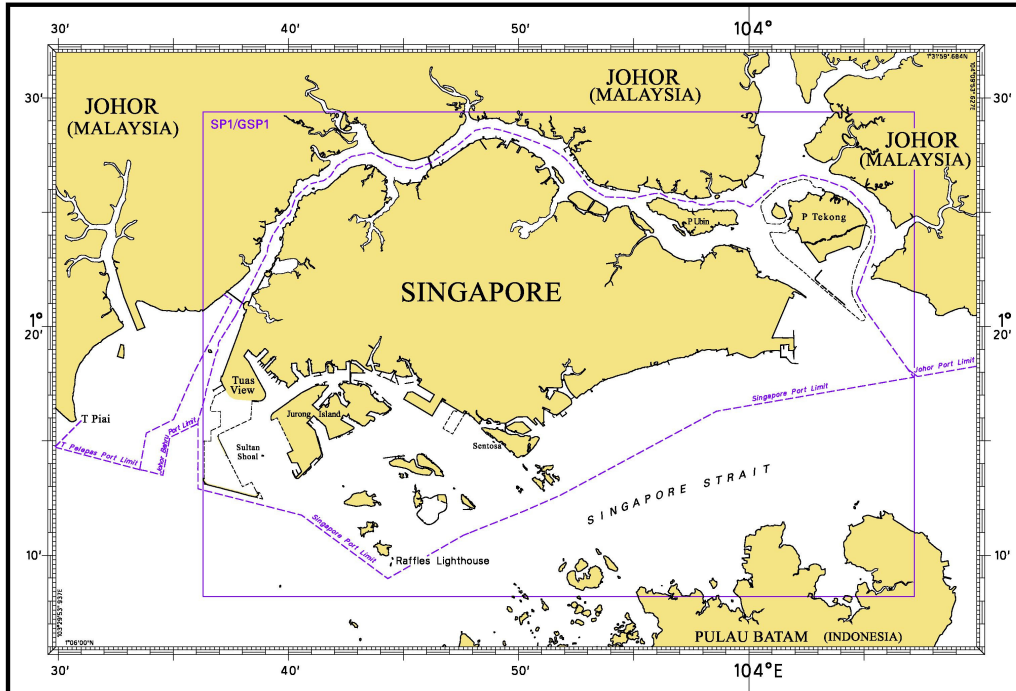
INDEX OF NOTICES

| NOTICE NO. | DESCRIPTION | PAGE NO. | NOTICE NO. | DESCRIPTION | PAGE NO. |
|--------------|--|------------|------------|--|----------|
| - | Index of Singaporean Charts | 126 | *66 | Amendments to Publications | 143 |
| - | Singaporean Chart Catalogue | 127 | - | Reprint of Radio Navigational Warnings | 144 |
| - | Index of Dual Badged Charts | 128 | - | Reprint of Admiralty Notices to Mariners for Dual Badged Charts | 145 |
| - | Dual Badged Chart Catalogue | 129, 130 | - | Singapore Electronic Navigational Chart (ENC) Distributors | 146, 147 |
| - | Hydrographic Publications | 130 | - | Agents for the Maritime and Port Authority of Singapore Nautical Charts and Publications | 147 |
| - | Index of Singapore Electronic Navigational Chart (ENC) | 131 | | | |
| - | New Edition Dual Badged Charts | 132, 133 | | | |
| *52 | Numerical Index to Notices to Mariners of 2010 | 134 | | | |
| *53 | SP1/GSP1 | 134 | | | |
| *54 | SP1/GSP1 | 134 | | | |
| *55 | SP1/GSP1 | 134, 135 | | | |
| *56 | SP1/GSP1 | 134, 135 | | | |
| 57 | SP1/GSP1, 202, 500 | 135 | | | |
| *58 | 503 | 135 | | | |
| *59 | 502 | 135 | | | |
| *60T to *63T | Temporary and Preliminary Notices | 136 to 141 | | | |
| *64 | Port Marine Notices | 142 | | | |
| *65 | Singaporean Print-On-Demand (POD) Charts | 142 | | | |

* Denotes information are based on Singaporean source.

I INDEX OF CHARTS AND PUBLICATIONS

INDEX OF SINGAPOREAN CHARTS



Notes:

Updated SINGAPOREAN Charts are available through our Print-On-Demand (POD) Chart Service. For more information, refer to Section III – Navigational Information and these charts can be purchased from our authorised Chart Agents:
DPM (Singapore) Pte Ltd, E.W. Limer Charts & Publications Pte Ltd and Motion Smith.

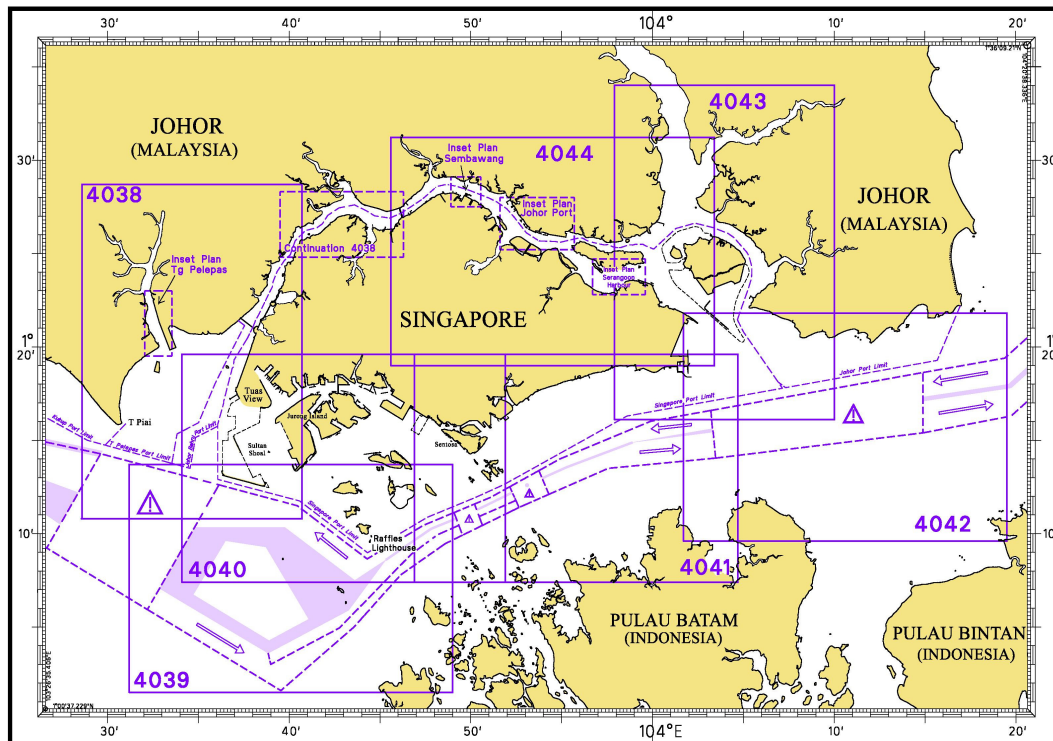
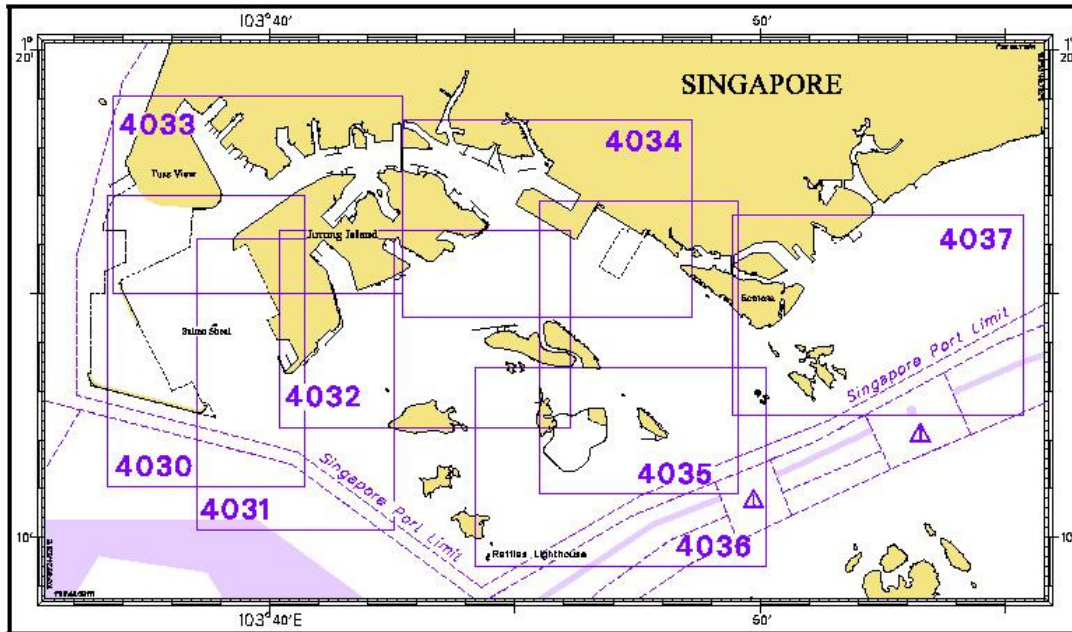
I
INDEX OF CHARTS AND PUBLICATIONS

SINGAPOREAN CHART CATALOGUE

| Chart No. | Chart Title | Scale 1: | Date Published of Latest Edition |
|------------------------|---|-----------------|---|
| 1 | Symbols and Abbreviations used on Singaporean produced Nautical Charts | - | July 2001 |
| Charts for Small Craft | Singapore Strait & Adjacent Waterways | Various | 15/01/09 |
| SP1 | Anchorage and Aids to Navigation | 60 000 | 21/01/10 |
| GSP1 | Anchorage and Aids to Navigation (with Area Reference) | 60 000 | 21/01/10 |
| 200 | Malacca Strait - Port Klang to Tanjung Keling | 200 000 | 30/11/05 |
| 201 | Malacca Strait - Tanjung Keling to Western Entrance of Singapore Strait | 200 000 | 5/10/07 |
| 202 | Singapore Strait | 200 000 | 24/09/09 |
| 500 | Malacca and Singapore Straits – Pulau Pisang to Raffles Lighthouse | 75 000 | 30/08/07 |
| 501 | Singapore Strait – Western Part | 50 000 | 24/09/09 |
| 502 | Singapore Strait - Eastern Part | 50 000 | 25/09/08 |
| 503 | South China Sea - Eastern Approaches and Entrance to Singapore Strait | 75 000 | 1/04/10 |

I INDEX OF CHARTS AND PUBLICATIONS

INDEX OF DUAL BADGED CHARTS



I
INDEX OF CHARTS AND PUBLICATIONS

DUAL BADGED CHART CATALOGUE

| Chart No. | Chart Title | Scale 1: | Date Published of Latest Edition |
|------------------|---|-----------------|---|
| 4030 | Port of Singapore West Jurong Anchorages and Temasek Fairway | 10 000 | 25/03/10 |
| 4031 | Port of Singapore Western Approaches to Jurong Island | 10 000 | 25/03/10 |
| 4032 | Port of Singapore Sinki Fairway | 10 000 | 4/03/10 |
| 4033 | Port of Singapore Tuas Bay, West Jurong Channel and Pesek Basin | 10 000 | 4/03/10 |
| 4034 | Port of Singapore East Jurong Channel, Pasir Panjang Terminal and West Keppel Fairway | 10 000 | 8/04/10 |
| 4035 | Port of Singapore Western Anchorages, Jong Fairway and Cruise Bay | 10 000 | 8/04/10 |
| 4036 | Port of Singapore Raffles Lighthouse to The Sisters | 10 000 | 21/05/09 |
| 4037 | Port of Singapore Keppel Harbour, Tanjong Pagar Terminal and Approaches | 10 000 | 21/05/09 |
| 4038 | Malaysia and Singapore Johor Strait – Western Part | 30 000 | 17/08/06 |
| 4039 | Indonesia, Singapore and Malaysia Western Approaches to Main Strait | 30 000 | 23/07/09 |
| 4040 | Singapore, Indonesia and Malaysia, Tuas View to Pulau Sakijang Bendera (S. John's Island) | 30 000 | 23/07/09 |
| 4041 | Singapore and Indonesia, Pulau Sebarok to Changi | 30 000 | 23/07/09 |

I
INDEX OF CHARTS AND PUBLICATIONS

DUAL BADGED CHART CATALOGUE

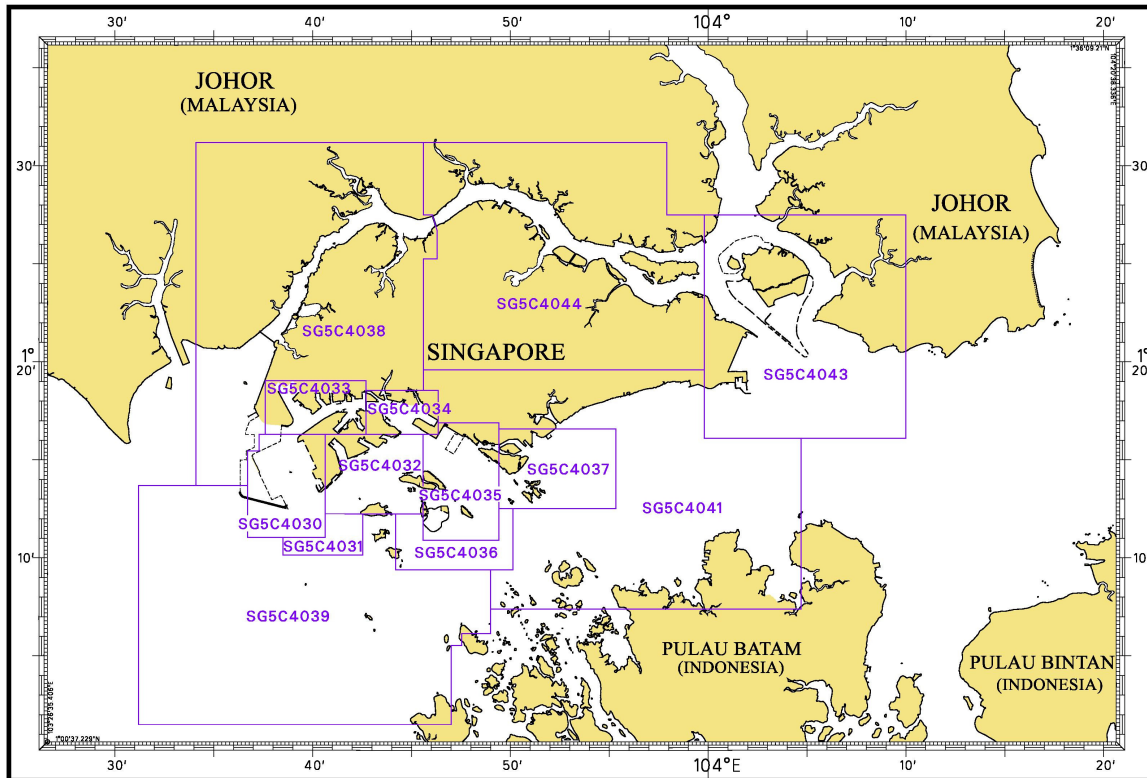
| | | | |
|------|---|--------|----------|
| 4042 | Indonesia, Malaysia and Singapore, Changi to Pulau Mungging and Tanjung Buntan to Tanjung Tondang | 30 000 | 24/07/08 |
| 4043 | Malaysia and Singapore Kuala Johor and Sungai Johor | 30 000 | 23/07/09 |
| 4044 | Singapore and Malaysia Johor Strait - Eastern Part | 30 000 | 23/07/09 |

INDEX OF SINGAPOREAN PUBLICATIONS**HYDROGRAPHIC PUBLICATIONS**

| Item | Title |
|------|--------------------------------------|
| 1 | Singapore Tide Tables Year 2010 |
| 2 | Singapore Port Information 2010/2011 |

I INDEX OF CHARTS AND PUBLICATIONS

INDEX OF SINGAPORE ELECTRONIC NAVIGATIONAL CHART (ENC)



INDEX OF SINGAPORE ENC

| ENC Name | ENC Title | Latitude | Longitude |
|----------|---|--------------------------|------------------------------|
| SG5C4030 | West Jurong Anchorages and Temasek Fairway | 1°11-050'N 1°16-300'N | 103°36-700'E 103°40-640'E |
| SG5C4031 | Western Approaches to Jurong Island | 1°10-150'N 1°12-250'N | 103°38-500'E 103°42-530'E |
| SG5C4032 | Sinki Fairway | 1°12-250'N 1°16-300'N | 103°40-640'E 103°45-580'E |
| SG5C4033 | Tuas Bay, West Jurong Channel and Pesek Basin | 1°16-300'N 1°19-050'N | 103°37-600'E 103°42-700'E |
| SG5C4034 | East Jurong Channel, Pasir Panjang Terminal and West Keppel Fairway | 1°16-300'N 1°18-550'N | 103°42-700'E 103°46-356'E |
| SG5C4035 | Western Anchorages, Jong Fairway and Cruise Bay | 1°10-900'N 1°16-900'N | 103°45-580'E 103°49-425'E |
| SG5C4036 | Raffles Lighthouse to The Sisters | 1°09-400'N 1°12-520'N | 103°44-200'E 103°50-130'E |
| SG5C4037 | Keppel Harbour, Tanjong Pagar Terminal and Approaches | 1°12-520'N 1°16-590'N | 103°49-425'E 103°55-340'E |
| SG5C4038 | Johor Strait – Western Part | 1°13-700'N 1°31-200'N | 103°34-100'E 103°46-300'E |
| SG5C4039 | Western Approaches to Main Strait | 1°01-500'N 1°13-700'N | 103°31-200'E 103°49-000'E |
| SG5C4041 | Pulau Sebarok to Changi | 1°07-400'N 1°19-600'N | 103°45-600'E 103°04-700'E |
| SG5C4043 | Kuala Johor and Sungai Johor | 1°16-100'N 1°27-500'N | 103°59-800'E 104°10-000'E |
| SG5C4044 | Johor Strait – Eastern Part | 1°19-600'N 1°31-200'N | 103°45-600'E 103°59-800'E |

II NEW PUBLICATIONS

NEW EDITION DUAL BADGED CHARTS TO BE PUBLISHED ON 29TH JULY 2010

| | | |
|-----------------------|---|---|
| Chart Number | : | 4043 |
| Title | : | Malaysia and Singapore Kuala Johor and Sungai Johor |
| Coverage | : | Lat 01°16.10' N 01°34.00' N Long 103°57.90' E 104°10.00' E |
| Scale | : | 1: 30 000 |
| Date Published | : | 29 th July 2010 |
| Size of Chart | : | 748.1 X 1099.6 mm |
| Remarks | : | This new edition includes updated surveys covering these areas: <ul style="list-style-type: none"> • Area around Pulau Tekong • Kuala Johor • Area East of Changi • CAFHI Jetty |

The existing chart of the same number published on 23rd July 2009 is superseded.

| | | |
|-----------------------|---|---|
| Chart Number | : | 4044 |
| Title | : | Singapore and Malaysia Johor Strait, Eastern Part |
| Coverage | : | Lat 01° 19.00' N 01° 31.20' N Long 103° 45.60' E 104° 03.40' E |
| Scale | : | 1: 30 000 |
| Date Published | : | 29 th July 2010 |
| Size of Chart | : | 1100.5 x 749.5 mm |
| Remarks | : | This new edition includes updated surveys covering these areas : <ul style="list-style-type: none"> • Dockyard Reach • Kuala Johor • CAFHI Jetty • East of Changi |

The existing chart of the same number published on 23rd July 2009 is superseded.

II NEW PUBLICATIONS

NEW EDITION DUAL BADGED CHARTS TO BE PUBLISHED ON 5TH AUGUST 2010

| | | |
|-----------------------|---|--|
| Chart Number | : | 4038 |
| Title | : | Singapore and Malaysia Johor Strait, Western Part |
| Coverage | : | Lat 01°10.80'N 01°28.70'N Long 103°28.60'E 103°40.70'E |
| Scale | : | 1: 30 000 |
| Date Published | : | 5 th August 2010 |
| Size of Chart | : | 750.6 X 1100.2 mm |
| Remarks | : | This new edition includes updated surveys covering these areas : <ul style="list-style-type: none"> • Temasek Fairway • West Jurong Channel • Approaches to Sinki Fairway • Tuas Anchorages • Sudong Anchorage • West of Tuas View |

The existing chart of the same number published on 17th August 2006 is superseded.


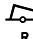


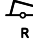


| | | |
|-----------------------|---|---|
| Chart Number | : | 4040 |
| Title | : | Singapore, Indonesia and Malaysia Tuas View to Pulau Sakijang Bendera (S. John's Island) |
| Coverage | : | Lat 01°07.40'N 01°19.60'N Long 103°34.10'E 103°51.90'E |
| Scale | : | 1: 30 000 |
| Date Published | : | 5 th August 2010 |
| Size of Chart | : | 1100.6 X 749.5 mm |
| Remarks | : | This new edition includes updated surveys covering these areas : <ul style="list-style-type: none"> • Temasek Fairway • West Jurong Channel • East Jurong Channel • Approaches to Sinki Fairway • Sudong Anchorages • Shell SBM Area • Selat Pauh • Buran Channel |

The existing chart of the same number published on 23rd July 2009 is superseded.

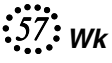

II
NOTICES TO MARINERS AND CHART CORRECTIONS

*(NM 52/2010) NUMERICAL INDEX TO NOTICES TO MARINERS OF 2010 (1 TO 47)

| CHART NO. | PUBLISHED | YEAR | NOTICES NO. |
|-----------|---------------|------|------------------------------|
| SP1, GSP1 | 5 Ed 21/01/10 | 2010 | 2-19-20-21-31-32-33-41-45-46 |
| 200 | 2Ed 30/11/05 | 2010 | 3-11-22 |
| 201 | 3Ed 05/10/07 | 2010 | 11-34-35 |
| 202 | 6Ed 24/09/09 | 2010 | 12-23-36-37 |
| 500 | 5Ed 30/08/07 | 2010 | - |
| 501 | 5Ed 24/09/09 | 2010 | 32-33-36 |
| 502 | 4Ed 25/09/08 | 2010 | 12-31-32-33 |
| 503 | 4Ed 1/04/10 | 2010 | 47 |

| | | | |
|-------------------|---|--|---|
| SP1/GSP1 | 5Ed 21/01/10 Last NM 46/2010 | (HD/HY/A00110509) | *NM 53/2010 |
| Insert |  Obstn | | 1°17-50'N 103°53-71'E |
| | | (HD/HE025/46/2010) | *NM 54/2010 |
| Move |  FI(2)R.10s Long Shoal from to | | 1°16-97'N 103°39-86'E 1°16-91'N 103°39-77'E |
| | | (HD/HE025/47/2010) | *NM 55/2010 |
| Substitute |  FI.Y.4s ADCP 3 for  FI.Y.4s ADCP 3 | | 1°14-32'N 103°46-28'E |
| | | (Port Marine Notice No. 64/2010) | *NM 56/2010 |
| Move |  FI.R.8s PKH V3 from to | | 1°15-96'N 103°47-66'E 1°16-03'N 103°47-69'E |
| Insert | dashed line joining to to | | 1°15-72'N 103°47-67'E 1°16-03'N 103°47-69'E 1°16-15'N 103°47-66'E |
| Delete | dashed line joining to | | 1°15-72'N 103°43-67'E 1°16-15'N 103°47-66'E |
| | | (Peninsular Malaysia Marine Dept. Notice No. 33/2010) | NM 57/2010 |
| Insert |  FI.5s23m10M Obscured sector light 82° (Dir 263° - Dir 345°) at | | 1°18-89'N 103°36-65'E 1°18-89'N 103°36-65'E |
| Delete |  FI.5s12m5M Sector light joining to: | | 1°18-90'N 103°36-65'E 1°18-90'N 103°36-65'E 1°18-37'N 103°35-70'E |

II NOTICES TO MARINERS AND CHART CORRECTIONS

| | | | | |
|-------------------|---|--|--|--|
| Delete | Sector light joining to: | | 1°18-90'N 1°19-92'N | 103°36-65'E 103°36-27'E |
| <hr/> | | | | |
| 202 | 6Ed 24/09/09 Last NM 37/2010 | (Peninsular Malaysia Marine Dept. Notice No. 33/2010) | | NM 57/2010 |
| Substitute | ★ Fl.5s23m10M for ★ Fl.5s12m5M | | 1°18-89'N | 103°36-65'E |
| Insert |  <i>Wk</i> | (HD/HY/L00100910) | | *NM 58/2010 |
| | | | 1°18-71'N | 104°21-55'E |
| <hr/> | | | | |
| 500 | 5Ed 30/08/07 Last NM 104/2009 | (Peninsular Malaysia Marine Dept. Notice No. 33/2010) | | NM 57/2010 |
| Insert | Merambong Beacon Obscured sector light 82° (Dir 263° - Dir 345°) at | | 1°18-89'N | 103°36-65'E |
| Substitute | light character Fl.5s23m10M for Fl.5s12m5M | | 1°18-89'N | 103°36-65'E |
| Delete | Sector light joining to: Sector light joining to: | | 1°18-89'N 1°17-88'N 1°18-89'N 1°20-68'N | 103°36-65'E 103°34-82'E 103°36-65'E 103°36-01'E |
| <hr/> | | | | |
| 502 | 4Ed 25/09/08 Last NM 33/2010 | (HD/HY/N00109509) | | *NM 59/2010 |
| Insert | depth <i>14₃</i> | | 1°20-24'N | 104°05-26'E |
| <hr/> | | | | |
| 503 | 4Ed 01/04/10 Last NM 47/2010 | (HD/HY/L00100910) | | *NM 58/2010 |
| Insert |  <i>Wk</i> | | 1°18-71'N | 104°21-55'E |
| <hr/> | | | | |

II TEMPORARY AND PRELIMINARY NOTICES

***(NM 60T/2010) SOIL INVESTIGATION FROM THE SINGAPORE PORT LIMIT AND THE WEST BOUND LANE OF THE TRAFFIC SEPARATION SCHEME IN THE SINGAPORE STRAIT**

Purpose

Mariners navigating in the Singapore Strait are hereby informed that soil investigation operations will be carried out from the Singapore Port Limit and the westbound lane of the Traffic Separation Scheme.

Date

With effect from 1st July 2010 until 15th August 2010 (1.5 month).

Duration

Daily from 0700 hrs to 1900 hrs, seven days a week with effect from 1st July 2010.

Working Area

Within two areas, Area A and Area B, bounded by the following coordinates from Singapore Port Limit and the area within the westbound lane of the Traffic Separation Scheme (please see chart attached):

| WGS 84 Datum | | |
|-----------------|-----------|-------------|
| Area "A" Points | Lat. (N) | Long. (E) |
| A1 | 1°13.899' | 103°54.159' |
| A2 | 1°14.416' | 103°55.118' |
| A3 | 1°13.652' | 103°55.405' |
| A4 | 1°13.268' | 103°54.397' |

| WGS 84 Datum | | |
|-----------------|-----------|-------------|
| Area "B" Points | Lat. (N) | Long. (E) |
| B1 | 1°14.897' | 103°58.121' |
| B2 | 1°16.217' | 104°01.630' |
| B3 | 1°16.097' | 104°01.675' |
| B4 | 1°14.684' | 103°58.200' |

Vessels

Vessels involved in the operations will display the appropriate day and night signals and will stand by on VHF 12 and 14 and shall follow any traffic information given by the Vessel Traffic Service of Singapore (VTIS).

Navigational Broadcast

Navigational warning broadcast will be promulgated by (VTIS) on VHF CH 09 and NAVTEX to inform vessels of the soil investigation operation. Mariners are to maintain a listening watch for the above safety information.

Caution

Mariners are advised to:

- (a) Navigate with caution and proceed at safe speed when approaching the area; and
- (b) Keep well clear of the working vessels.

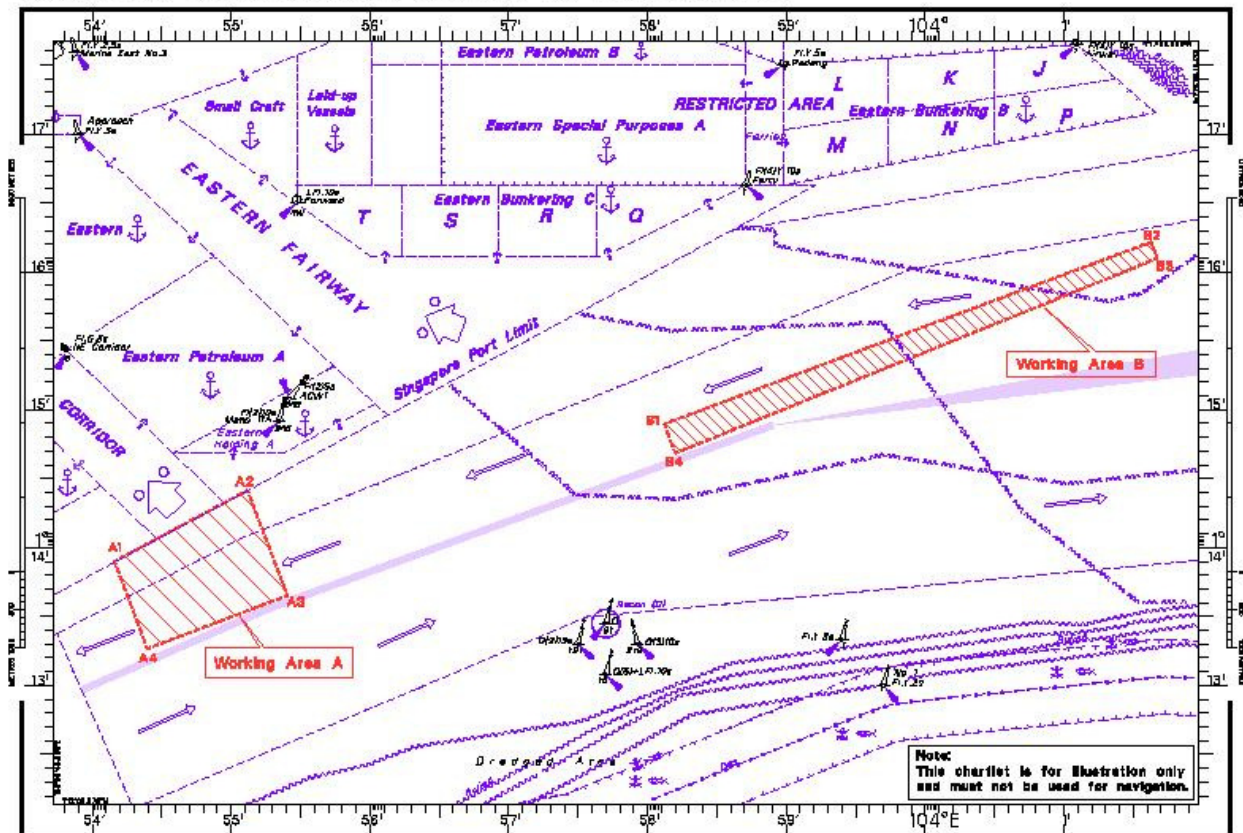
Charts affected: SP1/GSP1, 202, 501, 502, 4037 & 4041

Source: Surbana International Consultants Pte. Ltd.

(This is a repetition of Notice No. *48T/2010)

II TEMPORARY AND PRELIMINARY NOTICES

SOIL INVESTIGATION FROM THE SINGAPORE PORT LIMIT AND THE WEST BOUND LANE OF THE TRAFFIC SEPARATION SCHEME IN THE SINGAPORE STRAIT



II TEMPORARY AND PRELIMINARY NOTICES

*(NM 61T/2010) DREDGING IN THE WEST BOUND LANE OF THE TRAFFIC SEPARATION SCHEME IN THE SINGAPORE STRAIT.

Purpose

Mariners navigating in the Singapore Strait are hereby informed that dredging operations will be carried out in the westbound lane of the Traffic Separation Scheme.

Date

With effect from Dec 2009 until Nov 2011 (24 months).

Duration

24 hours a day, seven days a week with effect from Dec 2009.

Working Area

Within an area bounded by the following coordinates from Singapore Port Limit and the area within the westbound lane of the Traffic Separation Scheme (please see chart attached):

| WGS 84 Datum | | |
|--------------|-----------|-------------|
| Points | Lat. (N) | Long. (E) |
| 1 | 1°15.148' | 103°58.017' |
| 2 | 1°15.911' | 103°59.926' |
| 3 | 1°16.106' | 104°01.019' |
| 4 | 1°16.217' | 104°01.019' |
| 5 | 1°16.321' | 104°01.630' |
| 6 | 1°16.258' | 104°01.656' |
| 7 | 1°15.902' | 104°00.796' |
| 8 | 1°15.625' | 104°00.126' |
| 9 | 1°15.046' | 103°58.675' |
| 10 | 1°14.838' | 103°58.145' |

Vessels

Vessels involved in the operations will display the appropriate day and night signals and will stand by on VHF Ch 14 and 12 and shall follow any traffic information given by Vessel Traffic Information Service (VTIS).

Navigational Broadcast

Navigational warning broadcast will be promulgated by VTIS on VHF CH 09 and NAVTEX to inform vessels of the dredging operation. Mariners are to maintain a listening watch for the above safety information.

Caution

Mariners are advised to:

- (a) Navigate with caution and proceed at slow speed when approaching the area; and
- (b) Keep well clear of the working vessels.

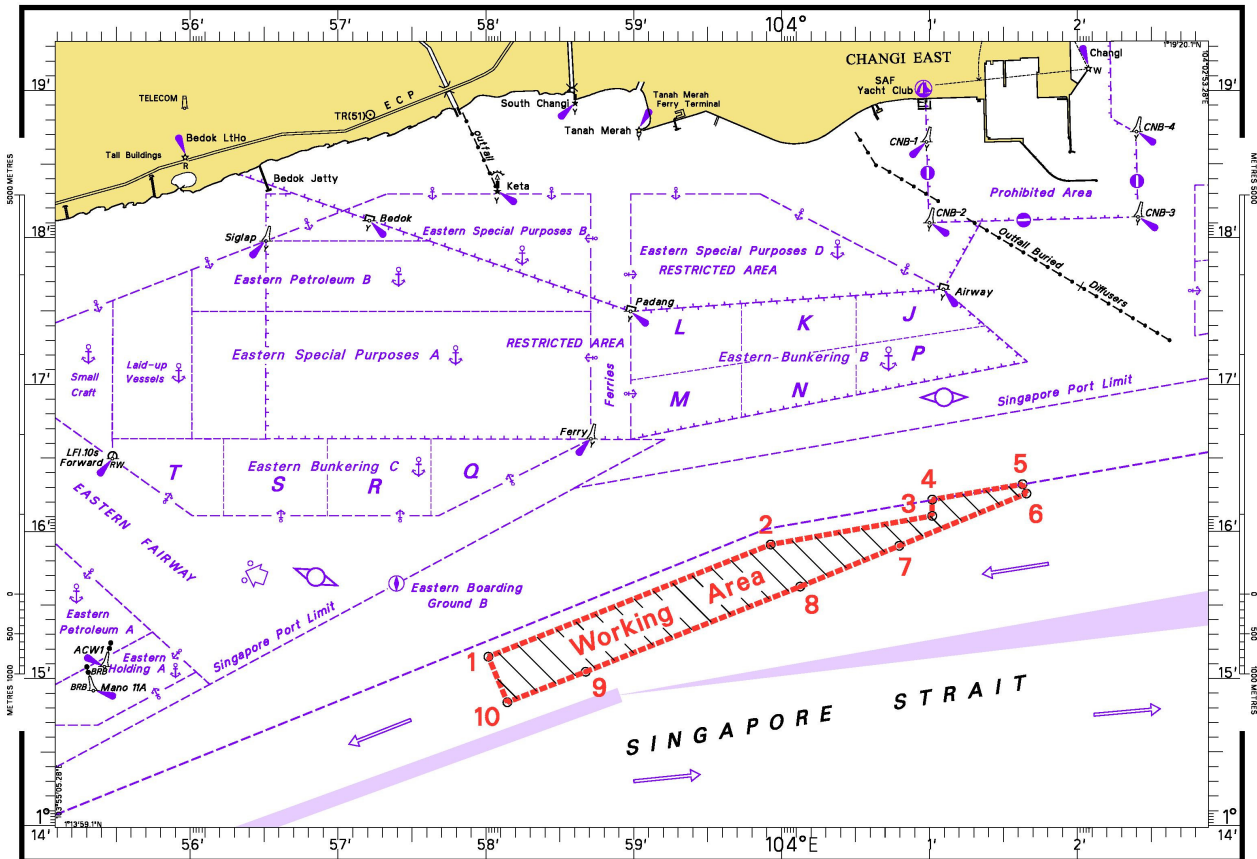
Charts affected: SP1/GSP1, 202, 502 & 4041

Source: PENTA-OCEAN/TOA CORPORATION/McCONNEL DOWELL JOINT VENTURE
HD/DB67/011/2009

(This is a repetition of Notice No. *4T/2010)

II TEMPORARY AND PRELIMINARY NOTICES

DREDGING IN THE WEST BOUND LANE OF THE TRAFFIC SEPARATION SCHEME IN THE SINGAPORE STRAIT



***(NM 62T/2010) DREDGING SOUTH OF THE SINGAPORE PORT LIMIT AND IN THE WEST BOUND LANE OF THE TRAFFIC SEPARATION SCHEME IN THE SINGAPORE STRAIT**

Purpose

Mariners navigating in the Singapore Strait are hereby informed that dredging operations will be carried out south of the Singapore Port Limit and in the westbound lane of the Traffic Separation Scheme.

Date

With effect from 17 Dec 2007 until 17 Dec 2011 (48 months).

Duration

24 hours a day, seven days a week with effect from 10 April 2008. On going dredging works will be carried out during daylight hours prior to 10 April 2008.

Working Area

Within an area bounded by the following coordinates south of the Singapore Port Limit and in the area within the westbound lane of the Traffic Separation Scheme (please see chart attached):

| WGS 84 Datum | | |
|--------------|-----------|-------------|
| Points | Lat. (N) | Long. (E) |
| 1 | 1°15.827' | 103°57.737' |
| 2 | 1°14.865' | 103°58.134' |

II TEMPORARY AND PRELIMINARY NOTICES

| | | |
|---|-----------|-------------|
| 3 | 1°13.298' | 103°54.401' |
| 4 | 1°13.884' | 103°54.131' |

Vessels

Vessels involved in the operations will display the appropriate day and night signals and will stand by on VHF Ch 14 and 12 and shall follow any traffic information given by Vessel Traffic Information Service (VTIS).

Navigational Broadcast

Navigational warning broadcast will be promulgated by VTIS on VHF CH 09 and NAVTEX to inform vessels of the dredging operation. Mariners are to maintain a listening watch for the above safety information.

Caution

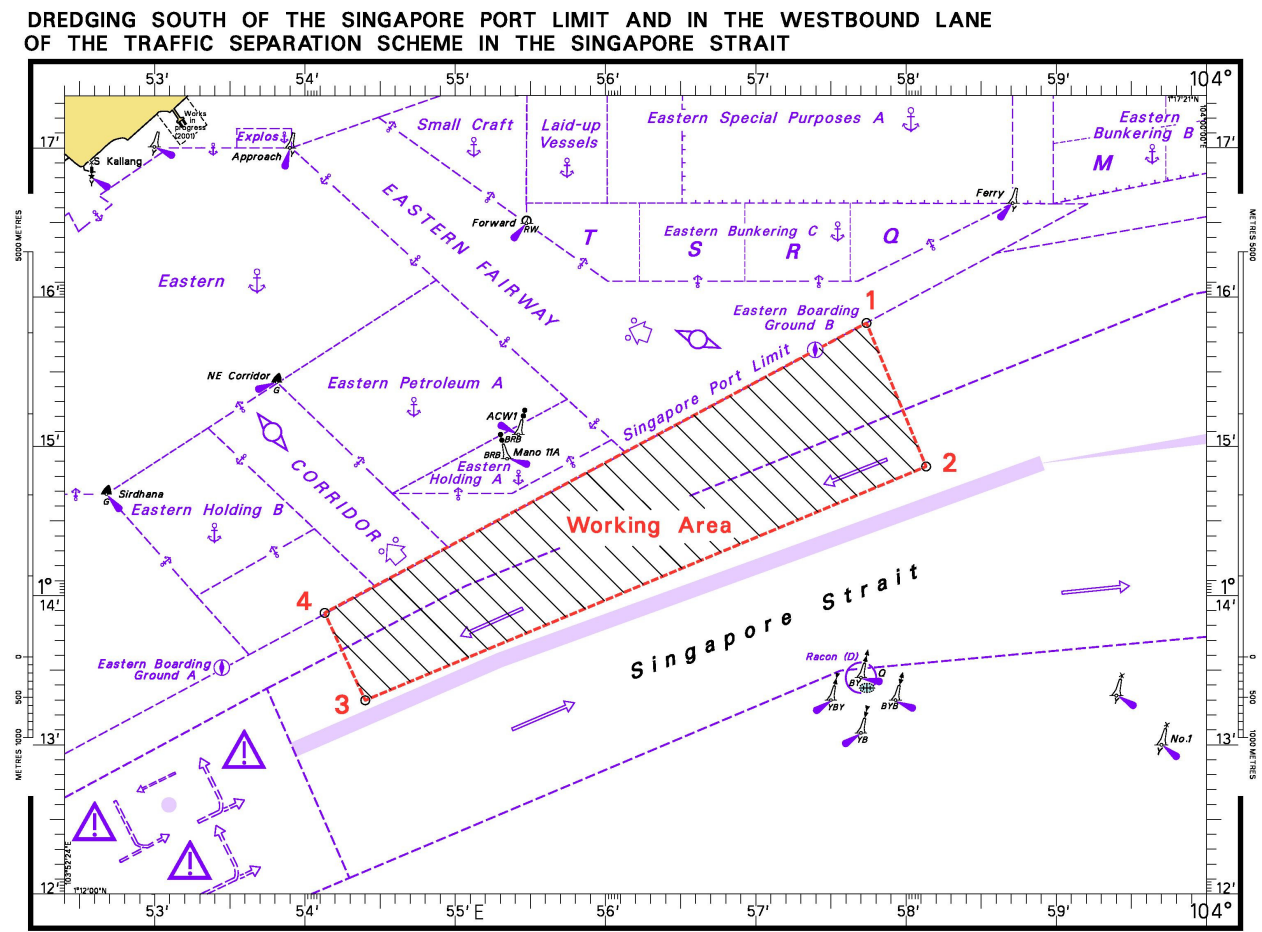
Mariners are advised to:

- (a) Navigate with caution and proceed at a safe speed when approaching the area; and
- (b) Keep well clear of the working vessels.

Charts affected: SP1/GSP1, 202, 501, 502, 4037 & 4041

Source: HD/DB67/010/2008

(This is a repetition of Notice No. *5T/2010)



II
TEMPORARY AND PRELIMINARY NOTICES

***(NM 63T/2010) SUBMARINE CABLE REPAIR WORK – SOUTH CHINA SEA – MIDDLE CHANNEL**

Remark : Repair of PACNET EAC2 Segment 2A1 – E136 submarine cable operation.

Date : With effect from 7th to 1st August 2010.

1. Cable repairs are in progress along the cable route bounded by the following positions (WGS84).
 - A. 1°17.9'N 104°10.5'E
 - B. 1°18.9'N 104°15.1'E
 - C. 1°21.2'N 104°21.3'E
 - D. 1°26.6'N 104°26.9'E
2. Charts affected : 202, 502 and 503
3. Mariners are advised
 - (a) to navigate with caution
 - (b) not to anchor or trawl in the vicinity of the cable route

Source : HD/DB67/7/2010

III NAVIGATIONAL INFORMATION

*(NM 64/2010) PORT MARINE NOTICES

The following PMNs have been shortlisted, as they would be of particular interest to mariners.

These notices can be accessed directly from MPA website:

http://www.mpa.gov.sg/sites/port_and_shipping/circulars_and_notices/port_marine_notices.page

| PMN No. | Subject |
|---------|--|
| 55/2010 | Reclamation at Pulau Tekong. |
| 58/2010 | Reclamation of Jurong Island Phase 4 and Tuas View Extension. |
| 64/2010 | Reclamation at Pasir Panjang Terminal and Pasir Panjang Wharves. |
| 66/2010 | Temporary staging ground at Sentosa. |
| 67/2010 | Construction of sea barrier at Serangoon Harbour. |

*(NM 65/2010) SINGAPOREAN PRINT-ON-DEMAND (POD) CHARTS

Print-On-Demand (POD) Charts are the most up-to-date paper nautical charts printed for navigational use. These nautical charts are produced in accordance with the International Hydrographic Organisation (IHO) charting specifications. These official nautical charts are continually updated to the latest Notices to Mariners before they are printed and sold to users.

These POD Charts include SP1/GSP1, 200, 201, 202, 500, 501, 502 and 503.

BENEFITS TO OUR CUSTOMERS

Convenience

Customers need not make numerous hand corrections to the nautical charts before use. In addition the updated POD Charts are more accurate and reliable than offset printed charts with hand corrections.

Clarity

Clarity in the presentation of updated information as compared to lithographic printed charts, where in some cases there are several overlapping corrections over existing information.

Coverage

The POD Charts cover the Malacca and Singapore Straits, from One Fathom Bank to Horsburgh Lighthouse.

III
AMENDMENTS TO PUBLICATIONS

***(NM 66/2010) UPDATING OF PUBLICATION "SINGAPORE PORT INFORMATION 2010/2011"**

1. Page 96

DEPTHS OF NAVIGATIONAL CHANNELS AND FAIRWAYS

Insert the following :

| LOCATIONS | DEPTHS (m) | | REMARKS |
|---|------------|-------------|---------|
| | Delete | Insert | |
| East Johor Strait - Eastern Buoy to Malang Papan | 11.6 | 11.8 | - |

Source: Berth List dated 3rd June 2010

2. Page 114

**CHARACTERISTICS OF AIDS TO NAVIGATION
WEST JURONG CHANNEL**

| Name of Buoy | Position | | | |
|------------------------|-----------|------------------|------------|-------------------|
| | Lat. N | | Long. E | |
| | Delete | Insert | Delete | Insert |
| Long Shoal Buoy | 01°16.961 | 01°16.910 | 103°39.858 | 103°39.767 |

Source: HD/HE025/46/2010

IV
REPRINT OF RADIO NAVIGATIONAL WARNINGS

TT173

VESSELS IN EAST JOHOR STRAIT ARE ADVISED TO NAVIGATE WITH CAUTION WHEN NEAR THE PROJECT AREAS OFF PULAU TEKONG, PULAU SERANGOON, CHANGI AND MALANG PAPAN AS SHALLOW WATER AREAS EXIST. VESSELS ARE ADVISED TO KEEP LOOKOUT FOR TUGS AND BARGES NAVIGATING NEAR THE PROJECT AREAS AND PASSENGER FERRIES CROSSING BETWEEN CHANGI AND PULAU TEKONG AND VICINITY OF PASIR GUDANG.

TT619 (AMENDED ON 270430z)

DREDGER QUEEN OF PENTA OCEAN IS CONDUCTING DREDGING OPERATIONS IN POSITIONS BOUNDED BY COORDINATES:

01°15.827' N 103°57.737' E

01°14.865' N 103°58.134' E

01°13.298' N 103°54.401' E

01°13.884' N 103°54.131' E

VESSELS ARE ADVISED TO PROCEED AT SAFE SPEED AND TO GIVE A WIDE BERTH.

TT753

A SMALL WOODEN CARGO BOAT 10M IN LENGTH SUNK AT 01°15.73'N 103°32.1'E.

TT854

DANGER TO NAVIGATION

A VESSEL HAD SUNK IN POSITION 01°26.3'N 104°38.5'E. VESSELS ARE TO KEEP CLEAR.

TT865

SAFE WATER MARK BUOY LFL.10S AT POSN 01°02.95'N 103°38.99'E IS UNLIT.

TT879

DEEP WATER MARKING BUOY SOUTH OF RACON D NOT IN POSITION, A BUOY WAS SIGHTED AT POSN LAT 01°04.31N LONG 103°39.14E. MARINERS ARE ADVISED TO NAVIGATE WITH CAUTION.

TT880(Amended 260800Z)

BATU BERHANTI BUOY FL(2)5s HAD DRIFTED OUT OF ITS CHARTERED POSITION. PRESENT POSITION AT 01°15.48N 103°58.04. MARINERS ARE ADVISED TO NAVIGATE WITH CAUTION.

SR154

THERE WAS A REPORT OF AN UNIDENTIFIED VESSEL SUNK SOUTHWEST OF HORSBURGH AT POSN 01°16.12'N 104°21.5'E. VESSELS IN THE VICINITY ARE ADVISED TO KEEP A LOOKOUT AND REPORT SIGHTING TO SPOCC.

ISSUED BY SINGAPORE PORT OPERATIONS CONTROL CENTRE
(as at 27th June 2010)

V
**REPRINT OF ADMIRALTY NOTICES TO MARINERS
 FOR DUAL BADGED CHARTS**

These notices can be accessed directly from UKHO Website:

<http://www.ukho.gov.uk/ProductsandServices/MaritimeSafety/Pages/NMPublic.aspx>

2726* SINGAPORE – Pulau Sudong North-eastwards, Pasir Panjang Terminal Northwards and Tuas View Westwards – Wrecks. Depths. Mooring buoy.

Source: Maritime and Port Authority of Singapore

Chart 4032 [*previous update 2228/10*] WGS84 DATUM

| | | | |
|--------|--|-----|-------------------------------|
| Insert |  Wk | (a) | 1° 13'· 023N., 103° 43'·834E. |
| Delete |  Wk , adjacent to: | (a) | above |

Chart 4034 [*previous update New Edition 08/04/2010*] WGS84 DATUM

| | | | |
|--------|--|-----|-------------------------------|
| Insert | depth 46 enclosed by 5m contour | (a) | 1° 17'· 649N., 103° 45'·318E. |
| Delete | Depth 55 , closed S of: | (a) | above |

Chart 4038 [*previous update 655/10*] WGS84 DATUM

| | | |
|--------|---|-----------------------------|
| Insert |  Fl.Y.4s | 1° 17'· 50N., 103° 37'·03E. |
|--------|---|-----------------------------|

Chart 4040 [*previous update 2228/10*] WGS84 DATUM

| | | |
|--------|--|-----------------------------|
| Insert |  Fl.Y.4s | 1° 17'· 50N., 103° 37'·03E. |
|--------|--|-----------------------------|

3041* SINGAPORE – Main Strait, Marina East East-north-eastwards and East Jurong Channel Northwards and Southwards – Obstruction. Dredged depths. Depths.

Source: Maritime and Port Authority of Singapore

Chart 4034 [*previous update 2726/10*] WGS84 DATUM

| | | |
|-------|---|-------------------------------|
| Amend | dredged depth to, 12.1m (2010) , centred on: | 1° 17'· 894N., 103° 43'·904E. |
| | dredged depth to, 14.0m (2010) , centred on: | 1° 17'· 852N., 103° 43'·875E. |
| | dredged depth to, 12.3m (2010) , centred on: | 1° 16'· 861N., 103° 44'·097E. |
| | dredged depth to, 12.8m (2010) , centred on: | 1° 16'· 815N., 103° 44'·145E. |
| | dredged depth to, 14.5m (2010) , centred on: | 1° 16'· 763N., 103° 44'·272E. |
| | dredged depth to, 16.1m (2010) , centred on: | 1° 16'· 636N., 103° 44'·403E. |

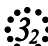
Chart 4037 [*previous update 2228/10*] WGS84 DATUM

| | | | |
|--------|---|-----|-------------------------------|
| Insert | depth 46 enclosed by 50m contour | (a) | 1° 12'· 613N., 103° 51'·864E. |
| Delete | depth 49 enclosed by 50m contour, adjacent to: | (a) | above |

Chart 4040 [*previous update 2726/10*] WGS84 DATUM

| | | |
|------------|---|-----------------------------|
| Substitute | depth 46 enclosed by 50m contour for depth 49 enclosed by 50m contour | 1° 12'· 61N., 103° 51'·86E. |
|------------|---|-----------------------------|

Chart 4041 [*previous update 2228/10*] WGS84 DATUM

| | | |
|------------|--|-----------------------------|
| Insert |  Obstn | 1° 17'· 82N., 103° 54'·98E. |
| Substitute | depth 46 enclosed by 50m contour for depth 49 enclosed by 50m contour | 1° 12'· 61N., 103° 51'·86E. |

SINGAPORE ELECTRONIC NAVIGATIONAL CHART (ENC) DISTRIBUTORS

Please approach any of the appointed distributors to purchase the Singapore ENC.

| DISTRIBUTOR | ADDRESS | TELEPHONE/FAX NO./EMAIL/WEBSITE |
|---|--|---|
| DPM (Singapore) Pte Ltd | 1 Maritime Square, #09-72 HarbourFront Centre, Singapore 099253 | Tel. No.: +65 6270 4060 Fax No.: +65 6276 3858 Email: sales@dpmsingapore.com.sg Website: http://www.dpmsingapore.com.sg |
| Kelvin Hughes(S) Pte Ltd | 8 Pandan Avenue #02-00, Singapore 609384 | Tel. No.: +65 6545 9880 ext.24 Fax No.: +65 6545 8892 Email: hamzah.akhbar@khsing.com Website: http://www.kelvinhughes.co.uk |
| Maritime Information Systems (MARIS) | 52, Telok Blangah Road #01-06, Telok Blangah Centre, Singapore 058809 | Tel. No.: +65 6276 1472 Fax No.: +65 6276 1473 Email: support@maris.sg Website: http://www.maris.no |
| Maritime Information System AS (MARIS) | Danholmen 25, 3128 Notteroy, Norway | Tel. No.: +47 33 30 42 50 Fax No.: +47 33 30 42 51 Email: roar.moe@maris.no Website: http://www.maris.no |
| Motion Smith | 15 Jalan Kilang Barat #08-01/05 Frontech Centre Singapore 159357 | Tel. No.: +65 6220 5098 Fax No.: +65 6225 4902 Email: sales@motsmith.com Website: http://www.motsmith.com |
| Transas Marine Pacific Pte Ltd | Cyber Centre 16 & 18 Jalan Kilang Barat Singapore 159358 | Tel. No.: +65 6271 0200 Fax No.: +65 6271 7300 Email: dominic@transas.com.sg Website: http://www.transas.com.sg |
| Vector Services Pte Ltd | 15 West Coast Highway, #02-14A Pasir Panjang Building Singapore 117861 | Tel. No.: +65 6777 3602 Fax No.: +65 6777 9203 Email: kwchoy@pacific.net.sg |
| Marine Press of Canada | 640 Rue St-Paul Ouest, Suite 300 Montreal (QC) Canada, H3C1L9 | Tel. No.: (514) 866 8342 Fax No.: (514) 866 9050 Email : sales@marinepress.com Website: http://www.marinepress.com |
| HanseNautic GmbH Bade & Hornig, Eckardt & Messtorff | Herrengaben 31 D-20459 Hamburg, Germany | Tel. No.: +49 40 374 811-32 Fax No.: +49 40 366 400 Email: wilde@hansenautic.de Website : http://www.HanseNautic.com |
| ChartWorld GmbH | Ruhrstrasse 90, D-22761 Hamburg, Germany | Tel. No.: +49 40 853 58 6940 Fax No.: +49 40 853 58 6949 Email: sales@chartworld.com Website : http://www.sevencs.com |
| Japan Hydrographic Association Electronic Charts Division | Daiichi Sogo Bldg, 6F 1-6-6, Hanedakuko, Ota-ku, Tokyo 144-0041, Japan | Tel. No.: +81 3 5708 7093 Fax No.: +81 3 5708 7094 Email: enc-support@jha.jp Website: http://www.jha.jp |

SINGAPORE ELECTRONIC NAVIGATIONAL CHART (ENC) DISTRIBUTORS

Please approach any of the appointed distributors to purchase the Singapore ENC.

| DISTRIBUTOR | ADDRESS | TELEPHONE/FAX NO./EMAIL/WEBSITE |
|---------------------------------------|--|---|
| E_MLX Co. Ltd | Ssanyong Research No.2 Lab Sinseong-Dong 100 Yusong-Gu, Daejoen 305-804, Korea (ROK) | Tel. No.: +82 42 865 1893 Fax No.: +82 42 865 1884 Email: Jester-kim@emlx.co.kr |
| Korean Ocean Development Co. Ltd | 2ND Fl, Dongbang Bldg, 25-4, 4 Ga Jungang-Dong, Jung-Gu, Busan, South Korea | Tel. No.: +82 514 66 0760 Fax No.: +82 514 65 9345 Email: sales@chartkorea.com Website: http://www.chartkorea.com |
| Jeppesen Norway A/S | P.O Box 212 , N-4379 Egersund, Norway | Tel No.: +47 514 64 700 Fax No: +47 514 64 701 Email: enc@c-map.no Website : http://www.c-map.no |
| PRIMAR STAVANGER | Lervigsveien 36, P.O Box 60, N-4001 Stavanger, Norway | Tel. No.: +47 51 93 9500 Fax No.: +47 51 93 9501 Email: sales@primar.org Website : http://www.primar-stavanger.org |
| United Kingdom Hydrographic Office | Admiralty Way, Taunton, Somerset TA1 2DN United Kingdom | Tel. No.: +44 (0)1823 337900 Fax No.: +44 (0)1823 284077 Emails: vargroup@ukho.gov.uk & christine.trickett@ukho.gov.uk Website: http://www.ukho.gov.uk |

**Agents for the Maritime and Port Authority of Singapore
Nautical Charts and Publications**

Agent's Name : **DPM (Singapore) Pte Ltd**
Address : 1 Maritime Square #09-72, HarbourFront Centre,
Singapore 099253
Telephone : (65) 6270 4060
Fax No. : (65) 6276 3858
E-mail : sales@dpmsingapore.com.sg
Internet Web Site : <http://www.dpmsingapore.com.sg>

Agent's Name : **E.W. Liner Charts & Publications Pte Ltd**
Address : 102F, Pasir Panjang Road, #08-01, Citilink Warehouse Complex,
Singapore 118530
Telephone : (65) 6323 0773
Fax No. : (65) 6323 0775
E-mail : ewliner@singnet.com.sg
Internet Web Site : <http://www.ewliner.com>

Agent's Name : **Motion Smith**
Address : 15 Jalan Kilang Barat
#08-01/05 Frontech Centre,
Singapore 159357
Telephone : (65) 6220 5098
: (After office hours: 8163 9993)
Fax No. : (65) 6225 4902
E-mail : sales@motsmith.com
Internet Web Site : <http://www.motsmith.com>

HYDROGRAPHIC NOTE - Instructions

1. Mariners are requested to notify the Chief Hydrographer, Maritime and Port Authority of Singapore, when new or suspected dangers to navigation are discovered, changes are observed in aids to navigation or where corrections to nautical publications may be necessary. Reports, which cannot be confirmed or are lacking in certain details should not be withheld.
2. Any ambiguities of time, positioning and depth should be stressed and any firm expectation of being able to check the information provided on a following voyage should be mentioned.
3. Mariners using satellite position fixing systems, eg. GPS, should provide details of equipment and datum used (where applicable). Where bearings (true or magnetic) are taken visually or by radar to fix a position, it should include more than two objects in order to provide a check on its accuracy. A position may also be defined by bearing and distance from a conspicuous object eg. beacon, lighthouse etc.
4. The note should include a tracing or a digital image of the chart used and the details should be clearly marked.
5. Echo sounders frequently register greater depths than the advertised maximum depth for the equipment, eg. a trace appearing at 50 metres may be in fact be 550 metres or even 1050 metres for equipment whose maximum depth is 500 metres. Erroneous depths caused by 2nd transmission error can usually be recognised by the following:
 - (a) the tracing being weaker than normal for the depth registered,
 - (b) the trace appearing to pass through the transmission line,
 - (c) the feathery nature of the trace.
6. Upon receipt of a hydrographic note, a Notice to Mariners may be issued. The sender's vessel or name is quoted as the source unless the same information is also received in foreign Notices to Mariners.
7. Reports of shoals, uncharted dangers and defects in aids to navigation may also be made to the appropriate Singapore Port Operations Control Centre on VHF Channels 10, 12, 14, 68 or 73.

HYDROGRAPHIC NOTE

To:

Chief Hydrographer
Hydrographic Department
Maritime and Port Authority of Singapore
460 Alexandra Road PSA Building #20-00
Singapore 119963

Tel : (65) 6375 1227
Fax : (65) 6278 7646
Email : hydrographic@mpa.gov.sg

Sender's Contact Details :

Date :

Name of Vessel :

Address of Sender :

Tel : Fax :

Email :

Nature of Observation :

General Location :

Subject :

Position : Lat. Long.

Charts Used :

Date & Time of Observation :

Details :

.....

.....

.....

Attachment :

Equipment Used :

Type of Position Fixing : GPS / DGPS Others :

Type of Echo Sounder :

Name and Signature :

Ship's/Company's Stamp :