



## SINGAPOREAN NOTICES TO MARINERS

---

SECTION	CONTENT	Page
I	Index of Charts & Publications	113
II	New Publications	119
	Notices to Mariners and Chart Corrections	122
	Temporary and Preliminary Notices	123
III	Navigational Information	127
	Amendments to Publications	128
IV	Reprint of Radio Navigational Warnings	129
V	Reprint of Admiralty Notices to Mariners for Dual Badged Charts	131

---

**The monthly Notices to Mariners contain corrective information affecting charts published by the Hydrographic Department, Maritime and Port Authority of Singapore. The information contained in these Notices should be updated on the charts affected. Notices under Section II apply only to the particular Singaporean Chart(s) indicated.**

---

Mariners are requested to notify the Chief Hydrographer, Maritime and Port Authority of Singapore, immediately on the discovery of new dangers or suspected dangers to navigation and of changes or defects in aids to navigation. See Hydrographic Note on back page.

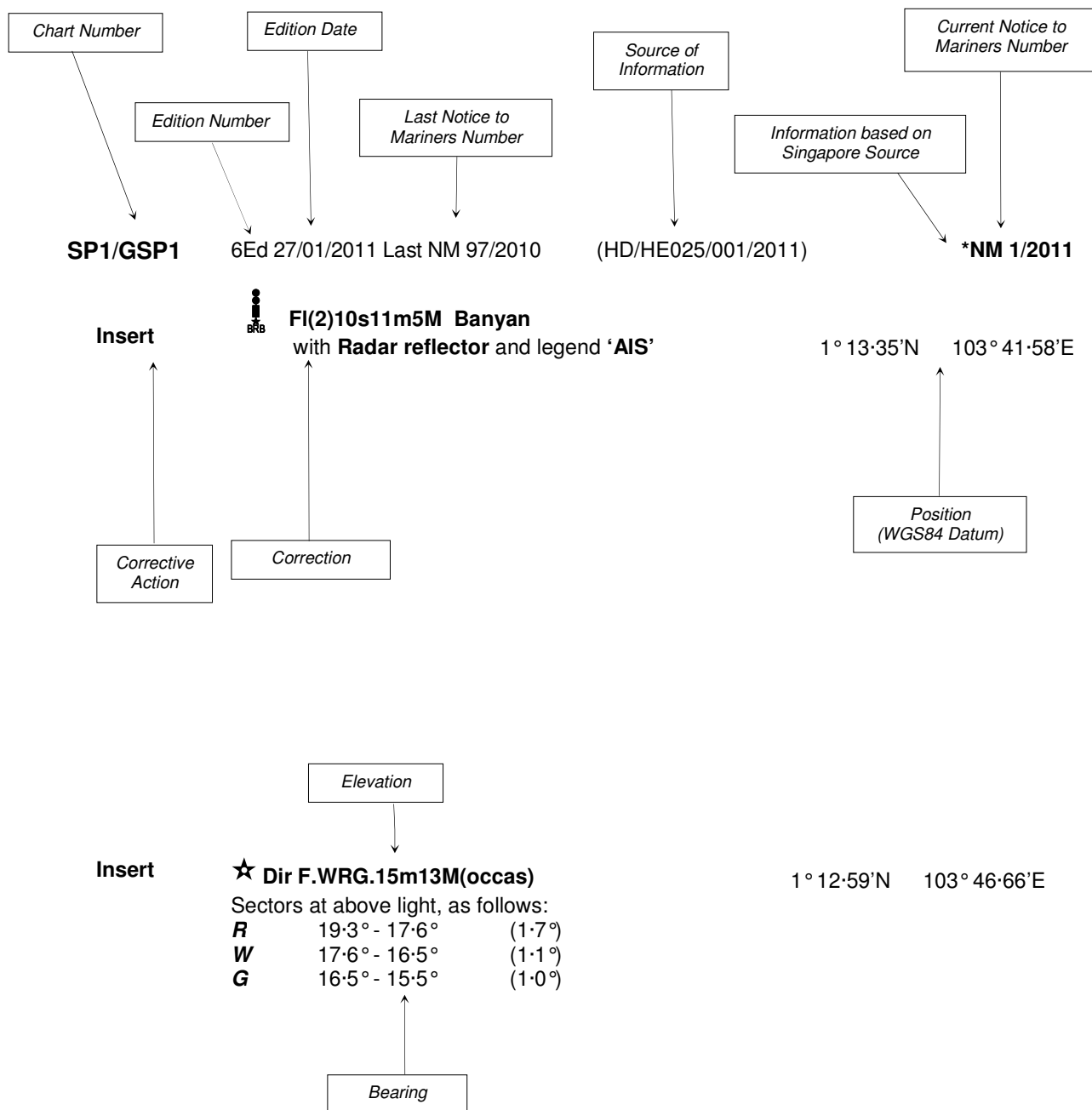
The monthly Singaporean Notices to Mariners can be accessed directly from the MPA website:  
[http://www.mpa.gov.sg/sites/port\\_and\\_shipping/circulars\\_and\\_notices/singapore\\_notices\\_to\\_mariners\(ntm\).page](http://www.mpa.gov.sg/sites/port_and_shipping/circulars_and_notices/singapore_notices_to_mariners(ntm).page)

This service is offered free of charge.

Hydrographic Department  
Maritime and Port Authority of Singapore  
460 Alexandra Road  
PSA Building #20-00  
Singapore 119963  
Tel: (65) 6375 1227  
Fax: (65) 6278 7646

## EXPLANATION OF FORMAT

The elements of a typical chart correction are explained below.



**Notes:**

- a) Notice to Mariners number followed by:  
**T** indicates a Temporary Notice (eg. **\*NM 2T/2011**).  
**P** indicates a Preliminary Notice (eg. **\*NM 3P/2011**).
- b) Bearings are true reckoned clockwise from 000° to 359°; those relating to lights are from seaward.
- c) Heights and elevations are above Mean High Water Springs.

I  
INDEX OF CHARTS AND PUBLICATIONS

INDEX OF AFFECTED CHARTS

DESCRIPTION	NOTICE NO.	PAGE NO.
Index of Singaporean Charts	-	113
Index of Dual Badged Charts	-	115
Index of Singapore Electronic Navigational Chart (ENC)	-	118
New Edition Dual Badged Charts	-	119 to 121
New Edition of Singaporean Chart 1	-	120
Numerical Index to Notices to Mariners of 2011	*57	122
Singaporean Chart SP1/GSP1	58, *59	122
Singaporean Chart 202	60	122
Singaporean Chart 500	*59	122
Singaporean Chart 501	*59	122
Temporary and Preliminary Notices	*61T, *62T, 63T	123 to 125
Port Marine Notices	*64	127
Singaporean Print-On-Demand (POD) Charts	*65	127
Amendments to Publications	-	128
Reprint of Radio Navigational Warnings	-	129
Reprint of Admiralty Notices to Mariners for Dual Badged Charts	-	130, 131
Singapore Electronic Navigational Chart (ENC) Distributors	-	132
Chart Agents for the Maritime and Port Authority of Singapore Nautical Charts and Publications	-	132

\*Denotes information are based on Singaporean source.

I  
INDEX OF CHARTS AND PUBLICATIONS

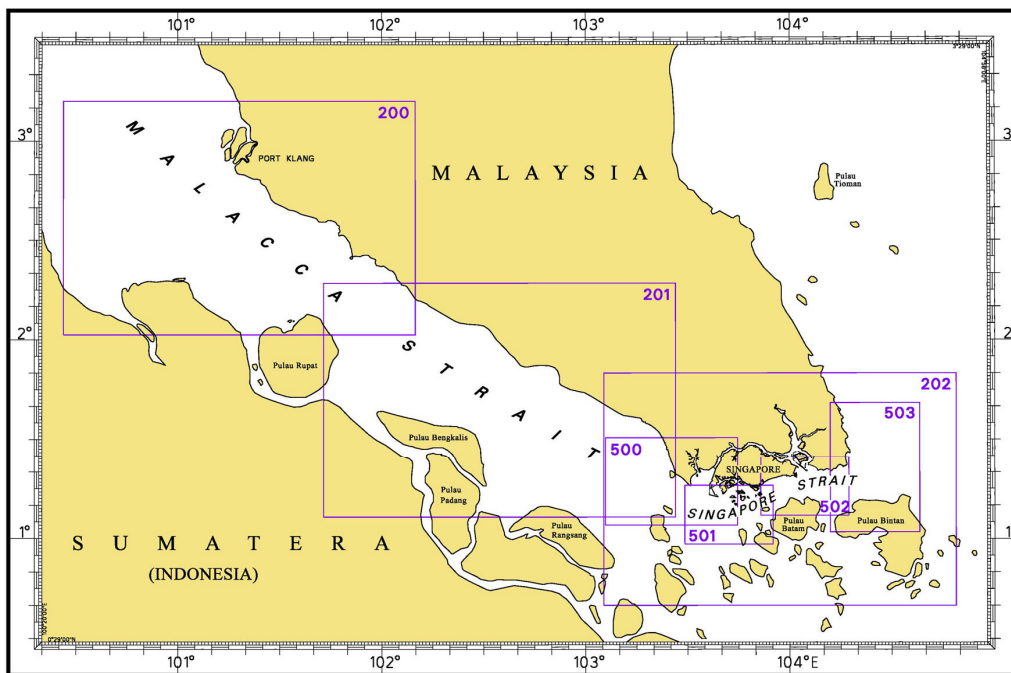
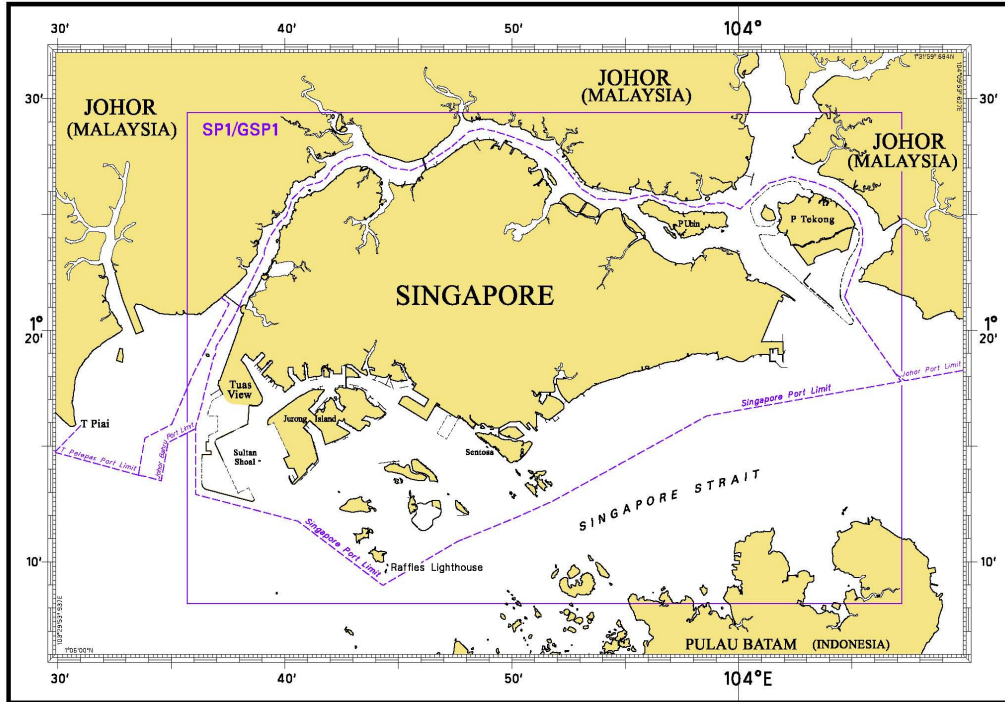
INDEX OF NOTICES

NOTICE NO.	DESCRIPTION	PAGE NO.
-	Index of Singaporean Charts	113
-	Index of Dual Badged Charts	115
-	Index of Singapore Electronic Navigational Chart (ENC)	118
-	New Edition Dual Badged Charts	119 to 121
-	New Edition of Singaporean Chart 1	120
*57	Numerical Index to Notices to Mariners of 2011	122
58, *59	Singaporean Chart SP1/GSP1	122
60	Singaporean Chart 202	122
*59	Singaporean Chart 500	122
*59	Singaporean Chart 501	122
*61T to 63T	Temporary and Preliminary Notices	123 to 125
*64	Port Marine Notices	127
*65	Singaporean Print-On-Demand (POD) Charts	127
-	Amendments to Publications	128
-	Reprint of Radio Navigational Warnings	129
-	Reprint of Admiralty Notices to Mariners for Dual Badged Charts	130, 131
-	Singapore Electronic Navigational Chart (ENC) Distributors	132
-	Chart Agents for the Maritime and Port Authority of Singapore Nautical Charts and Publications	132

\* Denotes information are based on Singaporean source.

# I INDEX OF CHARTS AND PUBLICATIONS

## INDEX OF SINGAPOREAN CHARTS



**Notes:**

Updated SINGAPOREAN Charts are available through our Print-On-Demand (POD) Chart Service. For more information, refer to Section III – Navigational Information and these charts can be purchased from our authorised Chart Agents:

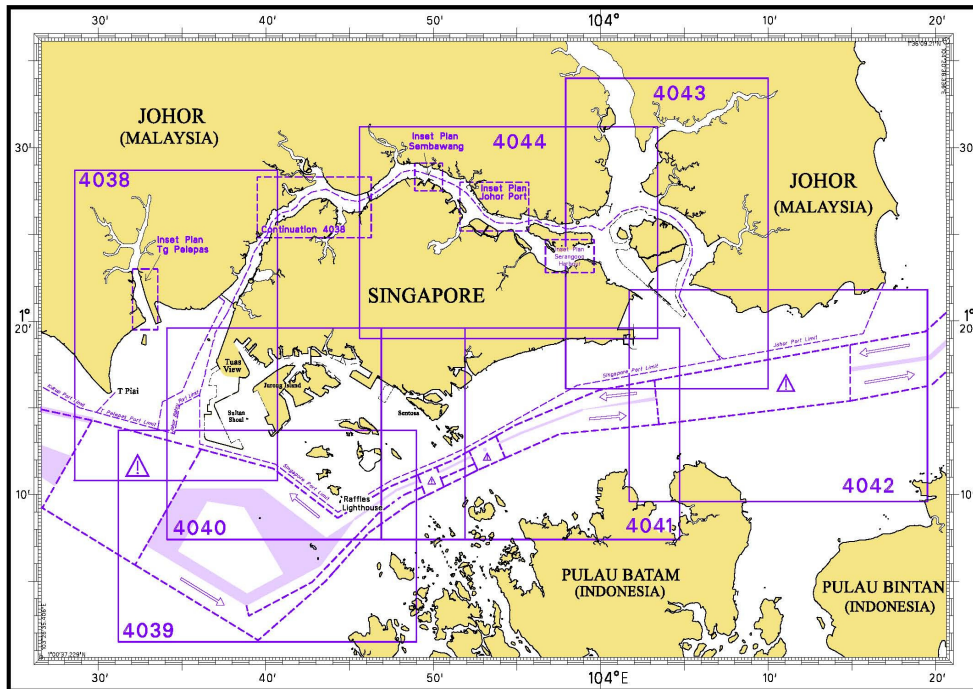
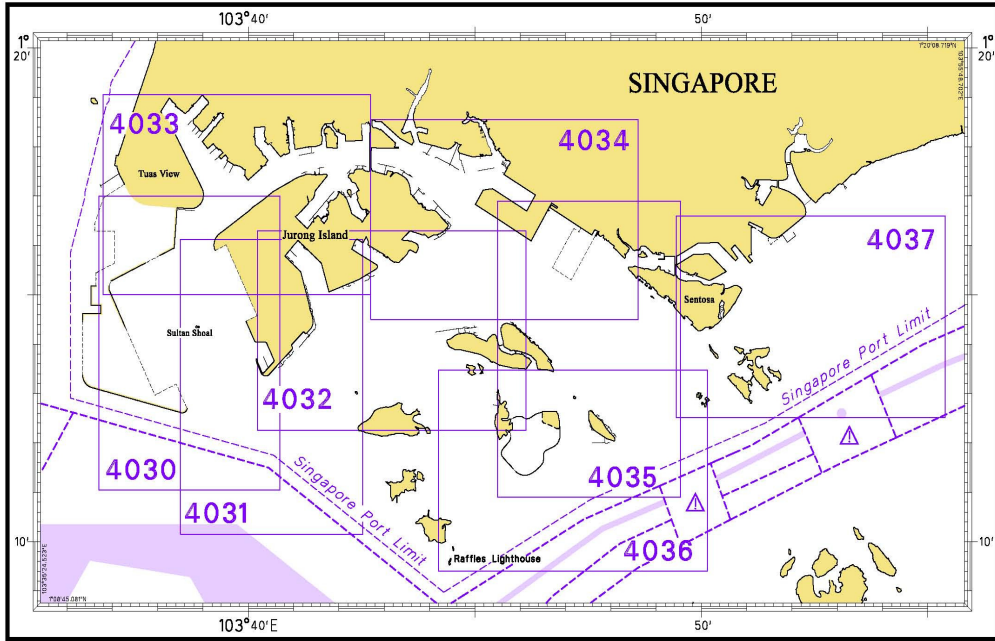
DPM (Singapore) Pte Ltd, E.W. Liner Charts & Publications Pte Ltd and Motion Smith.

I  
INDEX OF CHARTS AND PUBLICATIONS

**SINGAPOREAN CHART CATALOGUE**

<b>Chart No.</b>	<b>Chart Title</b>	<b>Scale 1:</b>	<b>Date Published of Latest Edition</b>
1	Symbols and Abbreviations used on Singaporean produced Nautical Charts	-	07/2001
Charts for Small Craft	Singapore Strait & Adjacent Waterways	Various	20/01/2011
SP1	Anchorage and Aids to Navigation	60 000	27/01/2011
GSP1	Anchorage and Aids to Navigation (with Area Reference)	60 000	27/01/2011
200	Malacca Strait - Port Klang to Tanjung Keling	200 000	30/11/2005
201	Malacca Strait - Tanjung Keling to Western Entrance of Singapore Strait	200 000	07/10/2010
202	Singapore Strait	200 000	24/09/2009
500	Malacca and Singapore Straits – Pulau Pisang to Raffles Lighthouse	75 000	07/10/2010
501	Singapore Strait – Western Part	50 000	24/09/2009
502	Singapore Strait - Eastern Part	50 000	25/09/2008
503	South China Sea - Eastern Approaches and Entrance to Singapore Strait	75 000	01/04/2010

I  
**INDEX OF CHARTS AND PUBLICATIONS**  
**INDEX OF DUAL BADGED CHARTS**



I  
INDEX OF CHARTS AND PUBLICATIONS

**DUAL BADGED CHART CATALOGUE**

<b>Chart No.</b>	<b>Chart Title</b>	<b>Scale 1:</b>	<b>Date Published of Latest Edition</b>
4030	Port of Singapore West Jurong Anchorages and Temasek Fairway	10 000	25/03/2010
4031	Port of Singapore Western Approaches to Jurong Island	10 000	25/03/2010
4032	Port of Singapore Sinki Fairway	10 000	04/03/2010
4033	Port of Singapore Tuas Bay, West Jurong Channel and Pesek Basin	10 000	04/03/2010
4034	Port of Singapore East Jurong Channel, Pasir Panjang Terminal and West Keppel Fairway	10 000	14/04/2011
4035	Port of Singapore Western Anchorages, Jong Fairway and Cruise Bay	10 000	14/04/2011
4036	Port of Singapore Raffles Lighthouse to The Sisters	10 000	28/04/2011
4037	Port of Singapore Keppel Harbour, Tanjong Pagar Terminal and Approaches	10 000	28/04/2011
4038	Malaysia and Singapore Johor Strait – Western Part	30 000	05/08/2010
4039	Indonesia, Singapore and Malaysia Western Approaches to Main Strait	30 000	23/07/2009
4040	Singapore, Indonesia and Malaysia, Tuas View to Pulau Sakijang Bendera (S. John's Island)	30 000	05/08/2010
4041	Singapore and Indonesia, Pulau Sebarok to Changi	30 000	23/07/2009

## I

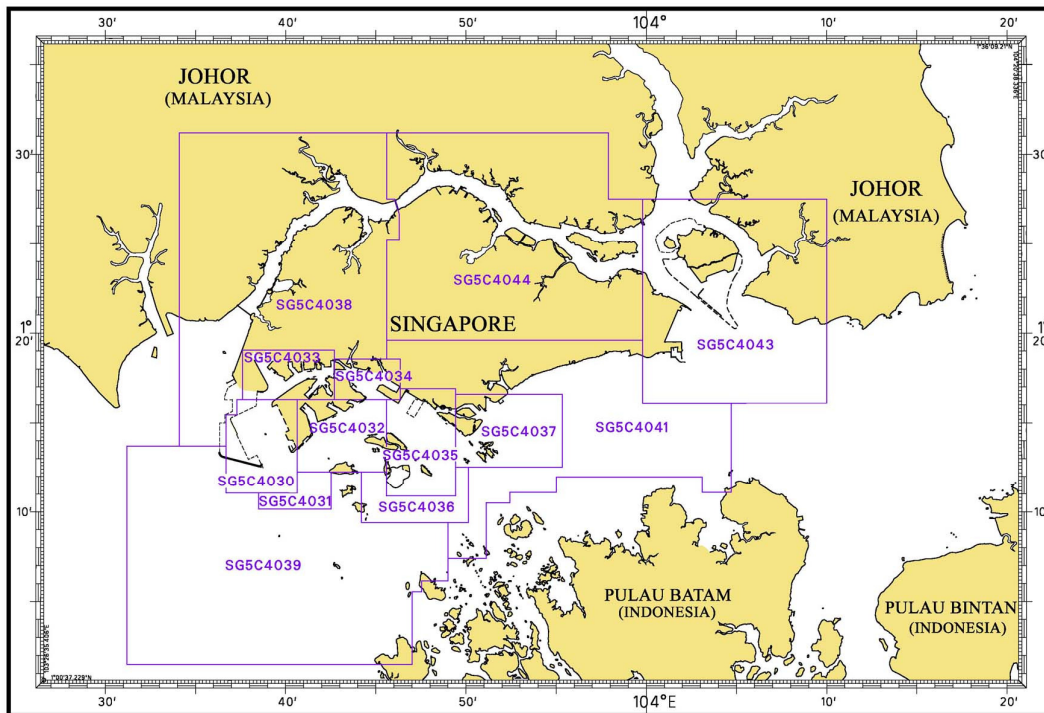
**INDEX OF CHARTS AND PUBLICATIONS****DUAL BADGED CHART CATALOGUE**

4042	Indonesia, Malaysia and Singapore, Changi to Pulau Mungging and Tanjung Buntan to Tanjung Tondang	30 000	17/02/2011
4043	Malaysia and Singapore Kuala Johor and Sungai Johor	30 000	29/07/2010
4044	Singapore and Malaysia Johor Strait - Eastern Part	30 000	29/07/2010

**INDEX OF SINGAPOREAN PUBLICATIONS****HYDROGRAPHIC PUBLICATIONS**

<b>Item</b>	<b>Title</b>
1	Singapore Tide Tables Year 2011
2	Singapore Port Information 2010/2011

**I**  
**INDEX OF CHARTS AND PUBLICATIONS**  
**INDEX OF SINGAPORE ELECTRONIC NAVIGATIONAL CHART (ENC)**



**INDEX OF SINGAPORE ENC**

ENC Name	ENC Title	Latitude	Longitude
SG5C4030	West Jurong Anchorages and Temasek Fairway	1°11'050"N 1°16'300"N	103°36'700"E 103°40'640"E
SG5C4031	Western Approaches to Jurong Island	1°10'150"N 1°12'250"N	103°38'500"E 103°42'530"E
SG5C4032	Sinki Fairway	1°12'250"N 1°16'300"N	103°40'640"E 103°45'580"E
SG5C4033	Tuas Bay, West Jurong Channel and Pesek Basin	1°16'300"N 1°19'050"N	103°37'600"E 103°42'700"E
SG5C4034	East Jurong Channel, Pasir Panjang Terminal and West Keppel Fairway	1°16'300"N 1°18'550"N	103°42'700"E 103°46'356"E
SG5C4035	Western Anchorages, Jong Fairway and Cruise Bay	1°10'900"N 1°16'900"N	103°45'580"E 103°49'425"E
SG5C4036	Raffles Lighthouse to The Sisters	1°09'400"N 1°12'520"N	103°44'200"E 103°50'130"E
SG5C4037	Keppel Harbour, Tanjong Pagar Terminal and Approaches	1°12'520"N 1°16'590"N	103°49'425"E 103°55'340"E
SG5C4038	Johor Strait – Western Part	1°13'700"N 1°31'200"N	103°34'100"E 103°46'300"E
SG5C4039	Western Approaches to Main Strait	1°01'500"N 1°13'700"N	103°31'200"E 103°49'000"E
SG5C4041	Pulau Sebarok to Changi	1°07'400"N 1°19'600"N	103°45'600"E 104°04'700"E
SG5C4043	Kuala Johor and Sungai Johor	1°16'100"N 1°27'500"N	103°59'800"E 104°10'000"E
SG5C4044	Johor Strait – Eastern Part	1°19'600"N 1°31'200"N	103°45'600"E 103°59'800"E

## II NEW PUBLICATIONS

### NEW EDITION DUAL BADGED CHARTS TO BE PUBLISHED ON 28<sup>TH</sup> JULY 2011

<b>Chart Number</b>	:	4043
<b>Title</b>	:	Malaysia and Singapore Kuala Johor and Sungai Johor
<b>Coverage</b>	:	Lat 01°16.10'N 01°34.00'N Long 103°57.90'E 104°10.00'E
<b>Scale</b>	:	1: 30 000
<b>Date Published</b>	:	28 <sup>th</sup> July 2011
<b>Size of Chart</b>	:	748.1 x 1099.6 mm
<b>Remarks</b>	:	This new edition includes updated surveys covering these areas : <ul style="list-style-type: none"> <li>• Area around Pulau Tekong</li> <li>• Kuala Johor</li> <li>• Changi Creek</li> <li>• Eastern Anchorages</li> <li>• Eastern Fairway</li> </ul>

The existing chart of the same number published on 29<sup>th</sup> July 2010 will be superseded.

---

<b>Chart Number</b>	:	4044
<b>Title</b>	:	Singapore and Malaysia Johor Strait, Eastern Part
<b>Coverage</b>	:	Lat 01°19.00'N 01°31.20'N Long 103°45.60'E 104°03.40'E
<b>Scale</b>	:	1: 30 000
<b>Date Published</b>	:	28 <sup>th</sup> July 2011
<b>Size of Chart</b>	:	1100.5 x 749.5 mm
<b>Remarks</b>	:	This new edition includes updated surveys covering these areas : <ul style="list-style-type: none"> <li>• Sembawang Basin</li> <li>• Kuala Johor</li> <li>• Changi Creek</li> <li>• East of Loyang Jetty</li> <li>• Sembawang Camp</li> </ul>

The existing chart of the same number published on 29<sup>th</sup> July 2010 will be superseded.

---

## II NEW PUBLICATIONS

### NEW EDITION CHART 1 TO BE PUBLISHED ON 28<sup>TH</sup> JULY 2011

<b>Chart Number</b>	:	Chart 1
<b>Title</b>	:	Symbols Abbreviations Terms and S-57 Object Classes (Version 3.1) used on Nautical and Electronic Navigational Charts
<b>Date Published</b>	:	28 <sup>th</sup> July 2011
<b>Remarks</b>	:	<p>This Edition of Chart 1 contains the Symbols Abbreviations Terms and S-57 Object Classes used on International as well as national Nautical and Electronic Navigational Charts of the Hydrographic Department, Maritime and Port Authority of Singapore. These are based on the Chart Specifications and S-57 Specifications of the International Hydrographic Organization (IHO).</p> <ul style="list-style-type: none"> <li>• The layout and numbering accords with the IHO version of Chart INT1.</li> <li>• Chart 1 will be available online and can be accessed directly from the MPA website: <a href="http://www.mpa.gov.sg/sites/port_and_shipping/port/charts_tidal_information_and_hydrography/charts/">http://www.mpa.gov.sg/sites/port_and_shipping/port/charts_tidal_information_and_hydrography/charts/</a></li> </ul>

Chart of the same publication published on July 2001 will be superseded.

### NEW EDITION DUAL BADGED CHARTS TO BE PUBLISHED ON 11<sup>TH</sup> AUGUST 2011

<b>Chart Number</b>	:	4039
<b>Title</b>	:	Indonesia, Singapore and Malaysia Western Approaches To Main Strait
<b>Coverage</b>	:	Lat 01°01'50"N 01°13'70"N Long 103°31'20"E 103°49'00"E
<b>Scale</b>	:	1: 30 000
<b>Date Published</b>	:	11 <sup>th</sup> August 2011
<b>Size of Chart</b>	:	1100.7 x 749.5 mm
<b>Remarks</b>	:	<p>This new edition includes updated surveys covering these areas :</p> <ul style="list-style-type: none"> <li>• South of Tuas View Extension</li> <li>• Shell SBM area</li> <li>• Jong Fairway</li> <li>• Sudong Anchorages</li> <li>• Selat Pauh Anchorage</li> <li>• Sinki Fairway</li> </ul>

The existing chart of the same number published on 23rd July 2009 will be superseded.

## II NEW PUBLICATIONS

### NEW EDITION DUAL BADGED CHARTS TO BE PUBLISHED ON 11<sup>TH</sup> AUGUST 2011

<b>Chart Number</b>	:	4040
<b>Title</b>	:	Indonesia, Singapore and Malaysia Tuas View To Pulau Sakijang Bendera (S. John's Island)
<b>Coverage</b>	:	Lat 01°07'40"N 01°19'60"N Long 103°34'10"E 103°51'90"E
<b>Scale</b>	:	1: 30 000
<b>Date Published</b>	:	11 <sup>th</sup> August 2011
<b>Size of Chart</b>	:	1100.6 X 749.5 mm
<b>Remarks</b>	:	This new edition includes updated surveys covering these areas : <ul style="list-style-type: none"> <li>• West of Tuas Reclamation</li> <li>• Temasek Fairway</li> <li>• West Jurong Channel</li> <li>• East Jurong Channel</li> <li>• Sudong Anchorages</li> <li>• Shell SBM area</li> <li>• Jong Fairway</li> <li>• Portion of East Keppel Fairway</li> </ul>

The existing chart of the same number published on 5<sup>th</sup> August 2010 will be superseded.

<b>Chart Number</b>	:	4041
<b>Title</b>	:	Singapore and Indonesia Pulau Sebarok To Changi
<b>Coverage</b>	:	Lat 01°07'40"N 01°19'60"N Long 103°46'90"E 104°04'70"E
<b>Scale</b>	:	1: 30 000
<b>Date Published</b>	:	11 <sup>th</sup> August 2011
<b>Size of Chart</b>	:	1100.6 x 749.5 mm
<b>Remarks</b>	:	This new edition includes updated surveys covering these areas : <ul style="list-style-type: none"> <li>• Area along East Coast</li> <li>• Approaches to the Eastern Anchorages</li> <li>• Eastern Anchorages</li> <li>• Eastern Fairway</li> <li>• Eastern Corridor</li> <li>• Portion of East Keppel Fairway</li> <li>• Buran Channel</li> <li>• Jong Fairway</li> <li>• Shell SBM area</li> </ul>

The existing chart of the same number published on 23rd July 2009 will be superseded.

#### Corrigendum


Previous announcement of publication of New Edition Dual Badged Chart No. 4042 is withhold till further notice.

**II**  
**NOTICES TO MARINERS AND CHART CORRECTIONS**

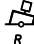
**\*(NM 57/2011) NUMERICAL INDEX TO NOTICES TO MARINERS OF 2011 (1 TO 56)**

CHART NO.	PUBLISHED	YEAR	NOTICES NO.
SP1, GSP1	6 Ed 27/01/11	2011	23-24-25-31-32-33-39-44-45-46
200	2 Ed 30/11/05	2011	34-35
201	4 Ed 7/10/10	2011	-
202	6 Ed 24/09/09	2011	4-5-17-26-31-32-39-47-48-49-50
500	6 Ed 7/10/10	2011	4-6-17-31-39
501	5 Ed 24/09/09	2011	3-4-17-25-31-32-39
502	4 Ed 25/09/08	2010	2-3-17-18-23-46
503	4 Ed 1/04/10	2011	5-17-51

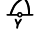
---

<b>SP1/GSP1</b>	6 Ed 27/1/11 Last NM 46/2011	(Admiralty Notice 23/2430/2011)	<b>NM 58/2011</b>
<b>Insert</b>	legend, <b>Works in progress (2010)</b> , between:	1°27·57'N 1°27·23'N	104°00·61'E 104°00·61'E
		(HD/HE025/46/2011)	<b>*NM 59/2011</b>
<b>Insert</b>	 <b>Fl.Y.2s Satumu 1</b>	1°09·44'N	103°44·40'E

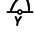
---

<b>202</b>	6 Ed 24/9/09 Last NM 50/2011	(Admiralty Notice 23/2500/2011)	<b>NM 60/2011</b>
<b>Insert</b>	 <b>Fl.R.8s No. 8</b>	0°48·45'N	104°36·85'E

---

<b>500</b>	6 Ed 7/10/10 Last NM 39/2011	(HD/HE025/46/2011)	<b>*NM 59/2011</b>
<b>Insert</b>	 <b>Fl.Y.2s Satumu 1</b>	1°09·44'N	103°44·40'E

---

<b>501</b>	5 Ed 24/09/09 Last NM 39/2011	(HD/HE025/46/2011)	<b>*NM 59/2011</b>
<b>Insert</b>	 <b>Fl.Y.2s Satumu 1</b>	1°09·44'N	103°44·40'E

---

## II TEMPORARY AND PRELIMINARY NOTICES

### \*(NM 61T/2011) DREDGING IN THE WEST BOUND LANE OF THE TRAFFIC SEPARATION SCHEME IN THE SINGAPORE STRAIT.

#### Purpose

Mariners navigating in the Singapore Strait are hereby informed that dredging operations will be carried out in the westbound lane of the Traffic Separation Scheme.

#### Date

With effect from Dec 2009 until Nov 2011 (24 months).

#### Duration

24 hours a day, seven days a week with effect from Dec 2009.

#### Working Area

Within an area bounded by the following coordinates from Singapore Port Limit and the area within the westbound lane of the Traffic Separation Scheme (please see chart attached):

WGS 84 Datum		
Points	Lat. (N)	Long. (E)
1	1°15·148'	103°58·017'
2	1°15·911'	103°59·926'
3	1°16·106'	104°01·019'
4	1°16·217'	104°01·019'
5	1°16·321'	104°01·630'
6	1°16·258'	104°01·656'
7	1°15·902'	104°00·796'
8	1°15·625'	104°00·126'
9	1°15·046'	103°58·675'
10	1°14·838'	103°58·145'

#### Vessels

Vessels involved in the operations will display the appropriate day and night signals and will stand by on VHF Ch 14 and 12 and shall follow any traffic information given by Vessel Traffic Information Service (VTIS).

#### Navigational Broadcast

Navigational warning broadcast will be promulgated by VTIS on VHF CH 09 and NAVTEX to inform vessels of the dredging operation. Mariners are to maintain a listening watch for the above safety information.

#### Caution

Mariners are advised to:

- (a) Navigate with caution and proceed at slow speed when approaching the area; and
- (b) Keep well clear of the working vessels.

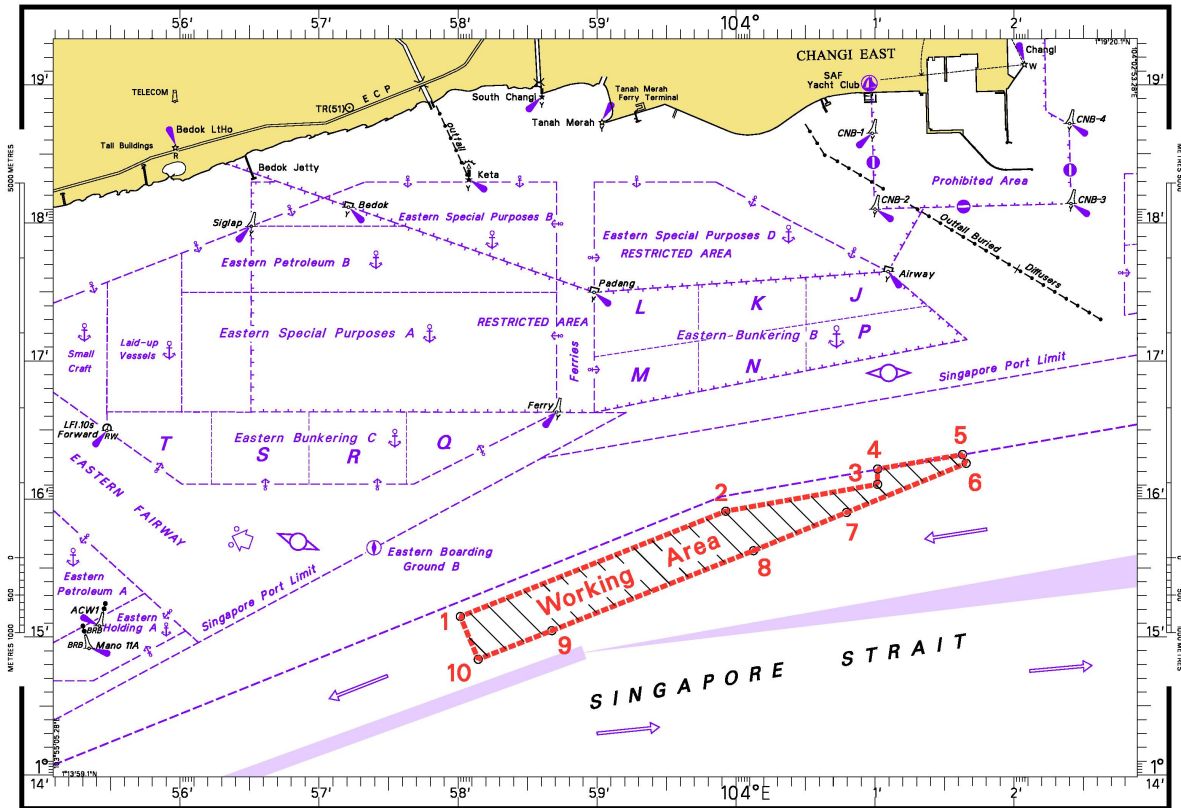
Charts affected: SP1/GSP1, 202, 502 & 4041

Source: PENTA-OCEAN/TOA CORPORATION/McCONNEL DOWELL JOINT VENTURE  
HD/DB67/011/2009

(This is a repetition of Notice No. \*7T/2011)

## II TEMPORARY AND PRELIMINARY NOTICES

### DREDGING IN THE WEST BOUND LANE OF THE TRAFFIC SEPARATION SCHEME IN THE SINGAPORE STRAIT



**\*(NM 62T/2011) DREDGING IN THE WEST BOUND LANE OF THE TRAFFIC SEPARATION  
SCHEME IN THE SINGAPORE STRAIT**

**Purpose**

Dredging operations will be carried out in the westbound lane of the Traffic Separation Scheme.

**Date**

1<sup>st</sup> October 2010 until 1<sup>st</sup> December 2012 (26 months).

**Duration**

24 hours operations daily with effect 1<sup>st</sup> October 2010.

**Working Area**

West bound lane of the Traffic Separation Scheme, within an area bounded by the following co-ordinates (please see chart attached):

WGS 84 Datum		
Points	Lat. (N)	Long. (E)
1	1°14.897'	103°58.121'
2	1°16.217'	104°01.630'
3	1°16.097'	104°01.674'
4	1°14.684'	103°58.200'

## II TEMPORARY AND PRELIMINARY NOTICES

### Vessels

Vessels involved in the operations will display the appropriate day / night signals and will maintain listening watch on VHF Ch 12 and VHF Ch 14.

### Navigational Broadcast

Navigational warning broadcast will be promulgated by (VTIS) on VHF CH 09 and NAVTEX to inform vessels of the dredging operation. Mariners are to maintain a listening watch for the above safety information.

### Caution

Mariners are advised to:

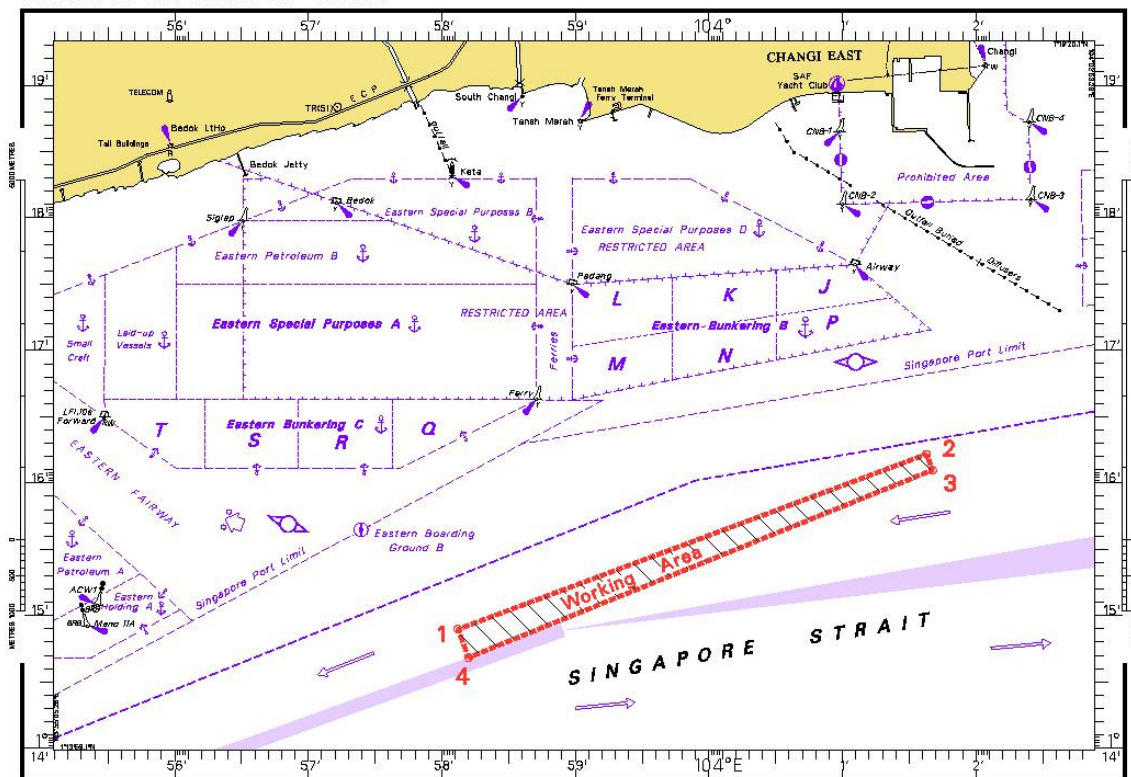
- (a) Navigate with caution and proceed at safe speed when approaching the area; and
- (b) Keep well clear of the working vessels.

Charts affected: SP1/GSP1, 202, 502 & 4041

Source: PENTA-OCEAN/KOON/HYUNDAI/VAN OORD JOINT VENTURE  
HD/DB67/12/2010

(This is a repetition of Notice No. \*9T/2011)

### DREDGING IN THE WEST BOUND LANE OF THE TRAFFIC SEPARATION SCHEME IN THE SINGAPORE STRAIT



**II**  
**TEMPORARY AND PRELIMINARY NOTICES**

**(NM 63T/2011) PANJANG SELATAN LIGHT BEACON COLLAPSED AND TEMPORARY LIGHT BUOY ESTABLISHED**

Mariners are advised that the Panjang Selatan Light Beacon at position Lat 01°23'47"N Long 103°07'84"E has collapsed. A temporary light buoy has been established in the area. The details are as follows:

1. Position : Lat 1°23'51"N Long 103°07'77"E
2. Type : Isolated Danger Buoy
3. Light Characteristics : Fl.W(2)10s

**Remarks :** Mariners are advised to navigate with caution when in the vicinity.

**Charts affected:** 500, 201 and 202

**Source :** Marine Department Peninsular Malaysia Notice to Mariners No. 36(T)/2011.

---

### III NAVIGATIONAL INFORMATION

**\*(NM 64/2011) PORT MARINE NOTICES**

The following PMNs have been shortlisted, as they would be of particular interest to mariners.

These notices can be accessed directly from MPA website:

[http://www.mpa.gov.sg/sites/port\\_and\\_shipping/circulars\\_and\\_notices/port\\_marine\\_notices.page](http://www.mpa.gov.sg/sites/port_and_shipping/circulars_and_notices/port_marine_notices.page)

<b>PMN No.</b>	<b>Subject</b>
71/2011	Temporary Staging Ground at Sentosa.
73/2011	Construction of SLNG Terminal at Jurong Island.

**\*(NM 65/2011) SINGAPOREAN PRINT-ON-DEMAND (POD) CHARTS**

Print-On-Demand (POD) Charts are the most up-to-date paper nautical charts printed for navigational use. These nautical charts are produced in accordance with the International Hydrographic Organisation (IHO) charting specifications. These official nautical charts are continually updated to the latest Notices to Mariners before they are printed and sold to users.

These POD Charts include SP1/GSP1, 200, 201, 202, 500, 501, 502 and 503.

**BENEFITS TO OUR CUSTOMERS**

**Convenience**

Customers need not make numerous hand corrections to the nautical charts before use. In addition the updated POD Charts are more accurate and reliable than offset printed charts with hand corrections.

**Clarity**

Clarity in the presentation of updated information as compared to lithographic printed charts, where in some cases there are several overlapping corrections over existing information.

**Coverage**

The POD Charts cover the Malacca and Singapore Straits, from One Fathom Bank to Horsburgh Lighthouse.

**III  
AMENDMENTS TO PUBLICATIONS**

Nil

**IV**  
**REPRINT OF RADIO NAVIGATIONAL WARNINGS**

The following Radio Navigational Warnings have been shortlisted, as they would be of particular interest to mariners.

TT173

VESSELS IN EAST JOHOR STRAIT ARE ADVISED TO NAVIGATE WITH CAUTION WHEN NEAR THE PROJECT AREAS OFF PULAU TEKONG, CHANGI AND MALANG PAPAN AS SHALLOW WATER AREAS EXIST. VESSELS ARE ADVISED TO KEEP LOOKOUT FOR TUGS AND BARGES NAVIGATING NEAR THE PROJECT AREAS AND PASSENGER FERRIES CROSSING BETWEEN CHANGI AND PULAU TEKONG AND VICINITY OF PASIR GUDANG.

TT619 AMENDED 190041UTC MAY 2011)

DREDGER "ANDROMEDA V" IS CONDUCTING DREDGING OPERATIONS IN COORDINATES:

01° 14·890' N 103° 58·120' E

01° 16·210' N 104° 01·630' E

01° 16·090' N 104° 01·670' E

01° 14·680' N 103° 58·200' E

VESSELS ARE TO KEEP CLEAR OF THE WORKING VESSEL.

TT753

A SMALL WOODEN CARGO BOAT 10M IN LENGTH SUNK AT 01° 15·73'N 103° 32·10'E.

TT884

SALVAGE OPERATIONS UNDERWAY IN 01° 13·40'N 103° 57·75'E. ALL SHIPS ARE REQUESTED TO GIVE A WIDE BERTH OF AT LEAST 5 CABLES WHEN PASSING THE AREA.

TT908

DANGER TO NAVIGATION (071700Z)

2 TUGBOATS REPORTED SUNK at 01° 19·63'N 104° 19·28'E

TT931

VESSELS NAVIGATING IN THE SINGAPORE STRAIT ARE REQUESTED NOT TO DIRECT THEIR HIGH INTENSITY SEARCHLIGHTS SKYWARD IN THE VICINITY OF CHANGI AIRPORT TO AVOID DISRUPTION TO AIR NAVIGATION.

TT953

RACON DELTA Q(6) FL 15 SECS AT POSITION LAT 01° 03·590'N LONG 103° 38·860'E IS REPORTED UNLIT.

TT958

CABLE SHIP 'ASEAN RESTORER' IS CARRYING OUT CABLE REPAIRS OPERATIONS FROM POSITION 01° 09·10'N 103° 26·78'E TO 01° 08·81'N 103° 27·30'E

VESSELS ARE ADVISED TO KEEP A LOOKOUT AND GIVE A WIDE BERTH.

TT959

BUFFALO, ISOLATED DANGER BUOY FL(2)5s IN POSITION 01° 09·90'N 103° 48·10'E IS REPORTED UNLIT. VESSELS ARE ADVISED TO NAVIGATE WITH EXTRA CAUTION.

TT960

CS 'AL RAWDAH' WAS REPORTED GROUNDING AT POSITION 01° 11·09'N 103° 53·22'E OFF BATU BERHANTI RACON (B) FL.8S. VESSELS ARE ADVISED TO NAVIGATE WITH CAUTION.

TT961

VESSELS INTENDING TO CROSS THE TRAFFIC SEPERATION SCHEME(TSS) OR PRECAUTIONARY AREAS IN THE SINGAPORE STRAIT DURING THE HOURS OF DARKNESS ARE RECOMMENDED TO DISPLAY THE NIGHT SIGNALS CONSISTING OF 3 ALL-ROUND GREEN LIGHTS IN A VERTICAL LINE WITH EFFECT FROM 1ST JULY 2011 AT 0000HRS UTC (0800HRS SINGAPORE LOCAL TIME) AS DETAILED IN MARITIME AND PORT AUTHORITY OF SINGAPORE'S PORT MARINE CIRCULAR, 02 OF 2011 DATED 30 MAY 2011.

**IV**  
**REPRINT OF RADIO NAVIGATIONAL WARNINGS**

SR154

AN UNIDENTIFIED VESSEL REPORTED SUNK SOUTH WEST OF HORSBURGH AT 01° 16.12'N  
104° 21.50'E.

SR183 (AMENDED 06TH JUNE 2011)


A SAMPAN CAPSIZED IN POSITION 01°16.53'N 104°13.99'E. ALL VESSELS ARE TO KEEP A LOOKOUT  
AND NAVIGATE WITH CAUTION. ALL THE 7 MISSING WERE ACCOUNTED FOR.

ISSUED BY SINGAPORE PORT OPERATIONS CONTROL CENTRE (as at 26<sup>th</sup> June 2011)



V  
**REPRINT OF ADMIRALTY NOTICES TO MARINERS  
 FOR DUAL BADGED CHARTS**

**Chart 4044** [ *previous update 2431/11* ] WGS84 DATUM

Insert	 <b>FL.Y.4s Sembawang</b>	1° 28'·22N., 103° 49'·43E.
	depth <i>0</i> <sub>2</sub> and extend 2m contour S to enclose	1° 25'·52N., 103° 58'·57E.

**Chart 4044 (plan C, Sembawang)** [ *previous update 2431/11* ] WGS84 DATUM

Insert	 <b>FL.Y.4s Sembawang</b>	1° 28'·219N., 103° 49'·432E.
--------	--	------------------------------

Updated to Admiralty Notices to Mariners Edition No. 26 of 2011 dated 30<sup>th</sup> June 2011.

**SINGAPORE ELECTRONIC NAVIGATIONAL CHART (ENC) DISTRIBUTORS**

Please approach any of the appointed distributors to purchase the Singapore ENC.

DISTRIBUTOR	ADDRESS	TELEPHONE/FAX NO./EMAIL/WEBSITE
DPM (Singapore) Pte Ltd	1 Maritime Square, #09-72 HarbourFront Centre, Singapore 099253	Tel. No.: +65 6270 4060 Fax No.: +65 6276 3858 Email: sales@dpmssingapore.com.sg Website: http://www.dpmsingapore.com.sg
Motion Smith	15 Jalan Kilang Barat #08-01/05 Frontech Centre Singapore 159357	Tel. No.: +65 6220 5098 Fax No.: +65 6225 4902 Email: sales@motsmith.com Website: http://www.motsmith.com
Transas Marine Pacific Pte Ltd	Cyber Centre 16 & 18 Jalan Kilang Barat Singapore 159358	Tel. No.: +65 6271 0200 Fax No.: +65 6271 7300 Email: dominic@transas.com.sg Website: http://www.transas.com.sg
Vector Services Pte Ltd	15 West Coast Highway, #02-14A Pasir Panjang Building Singapore 117861	Tel. No.: +65 6777 3602 Fax No.: +65 6777 9203 Email: kwchoy@pacific.net.sg
ChartWorld GmbH	Ruhrstrasse 90, D-22761 Hamburg, Germany	Tel. No.: +49 40 853 58 6942 Fax No.: +49 40 853 58 6949 Email: sales@chartworld.com Website : http://www.chartworld.com
Japan Hydrographic Association Electronic Charts Division	Daiichi Sogo Bldg, 6F 1-6-6, Hanedakuko, Ota-ku, Tokyo 144-0041, Japan	Tel. No.: +81 3 5708 7093 Fax No.: +81 3 5708 7094 Email: shimizu-6kj@jha.jp Website: http://www.jha.or.jp/en/jha/
Jeppesen Norway A/S	P.O Box 212 , N-4371 Egersund, Norway	Tel No.: +47 514 64 700 Fax No: +47 514 64 701 Email: license.marine@jeppesen.com Website : http://www.jeppesen.com
PRIMAR STAVANGER	Lervigsveien 36, P.O Box 60, N-4001 Stavanger, Norway	Tel. No.: +47 51 93 9500 Fax No.: +47 51 93 9501 Email: sales@ecc.no Website : http://www.primar.no
United Kingdom Hydrographic Office	Admiralty Way, Taunton, Somerset TA1 2DN United Kingdom	Tel. No.: +44 1823 337900 Fax No.: +44 1823 284077 Email: ENC.SalesReports@ukho.gov.uk Website: http://www.ukho.gov.uk

**Chart Agents for the Maritime and Port Authority of Singapore  
Nautical Charts and Publications**

Please approach any of the appointed chart agent to purchase the Singapore Nautical Charts and Publications.

CHART AGENT	ADDRESS	TELEPHONE/FAX NO./EMAIL/WEBSITE
DPM (Singapore) Pte Ltd	1 Maritime Square, #09-72 HarbourFront Centre, Singapore 099253	Tel. No.: +65 6270 4060 Fax No.: +65 6276 3858 Email: sales@dpmssingapore.com.sg Website: http://www.dpmsingapore.com.sg
E.W. Liner Charts & Publications Pte Ltd	102F, Pasir Panjang Road, #08-01, Citilink Warehouse Complex, Singapore 118530	Tel. No.: +65 6323 0773 Fax No.: +65 6323 0775 Email: ewliner@singnet.com.sg Website: http://www.ewliner.com
Motion Smith	15 Jalan Kilang Barat #08-01/05 Frontech Centre Singapore 159357	Tel. No.: +65 6220 5098 (After office hours: +65 8163 9993) Fax No.: +65 6225 4902 Email: sales@motsmith.com Website: http://www.motsmith.com

## HYDROGRAPHIC NOTE - Instructions

1. Mariners are requested to notify the Chief Hydrographer, Maritime and Port Authority of Singapore, when new or suspected dangers to navigation are discovered, changes are observed in aids to navigation or where corrections to nautical publications may be necessary. Reports, which cannot be confirmed or are lacking in certain details should not be withheld.
2. Any ambiguities of time, positioning and depth should be stressed and any firm expectation of being able to check the information provided on a following voyage should be mentioned.
3. Mariners using satellite position fixing systems, eg. GPS, should provide details of equipment and datum used (where applicable). Where bearings (true or magnetic) are taken visually or by radar to fix a position, it should include more than two objects in order to provide a check on its accuracy. A position may also be defined by bearing and distance from a conspicuous object eg. beacon, lighthouse etc.
4. The note should include a tracing or a digital image of the chart used and the details should be clearly marked.
5. Echo sounders frequently register greater depths than the advertised maximum depth for the equipment, eg. a trace appearing at 50 metres may be in fact be 550 metres or even 1050 metres for equipment whose maximum depth is 500 metres. Erroneous depths caused by 2nd transmission error can usually be recognised by the following:
  - (a) the tracing being weaker than normal for the depth registered,
  - (b) the trace appearing to pass through the transmission line,
  - (c) the feathery nature of the trace.
6. Upon receipt of a hydrographic note, a Notice to Mariners may be issued. The sender's vessel or name is quoted as the source unless the same information is also received in foreign Notices to Mariners.
7. Reports of shoals, uncharted dangers and defects in aids to navigation may also be made to the appropriate Singapore Port Operations Control Centre on VHF Channels 10, 12, 14, 68 or 73.

## HYDROGRAPHIC NOTE

To:

Chief Hydrographer  
Maritime and Port Authority of Singapore  
460 Alexandra Road PSA Building #20-00  
Singapore 119963

Tel : (65) 6375 1227  
Fax : (65) 6278 7646  
Email : [hydrographic@mpa.gov.sg](mailto:hydrographic@mpa.gov.sg)

**Sender's Contact Details** :

Date : .....

Name of Vessel : .....

Address of Sender : .....

Tel : ..... Fax : .....

Email : .....

**Nature of Observation** :

General Location : .....

Subject : .....

Position : Lat. .... Long. ....

Charts Used : .....

Date & Time of Observation : .....

Details : .....

.....

.....

Attachment : .....

**Equipment Used** :

Type of Position Fixing : ..... GPS / DGPS ..... Others : .....

Type of Echo Sounder : .....

Name and Signature : .....

Ship's/Company's Stamp : .....