



SINGAPOREAN NOTICES TO MARINERS

SECTION	CONTENT	Page
I	Index of Charts & Publications	3
II	New Publications	9
	Notices to Mariners and Chart Corrections	12
	Temporary and Preliminary Notices	13
III	Navigational Information	14
	Amendments to Publications	15
IV	Reprint of Radio Navigational Warnings	16
V	Extract of Admiralty Notices to Mariners for Dual Badged Charts	17

The monthly Notices to Mariners contain corrective information affecting charts published by the Hydrographic Department, Maritime and Port Authority of Singapore. The information contained in these Notices should be updated on the charts affected. Notices under Section II apply only to the particular Singaporean Chart(s) indicated.

Mariners are requested to notify the Chief Hydrographer, Maritime and Port Authority of Singapore, immediately on the discovery of new dangers or suspected dangers to navigation and of changes or defects in aids to navigation. See Hydrographic Note on back page.

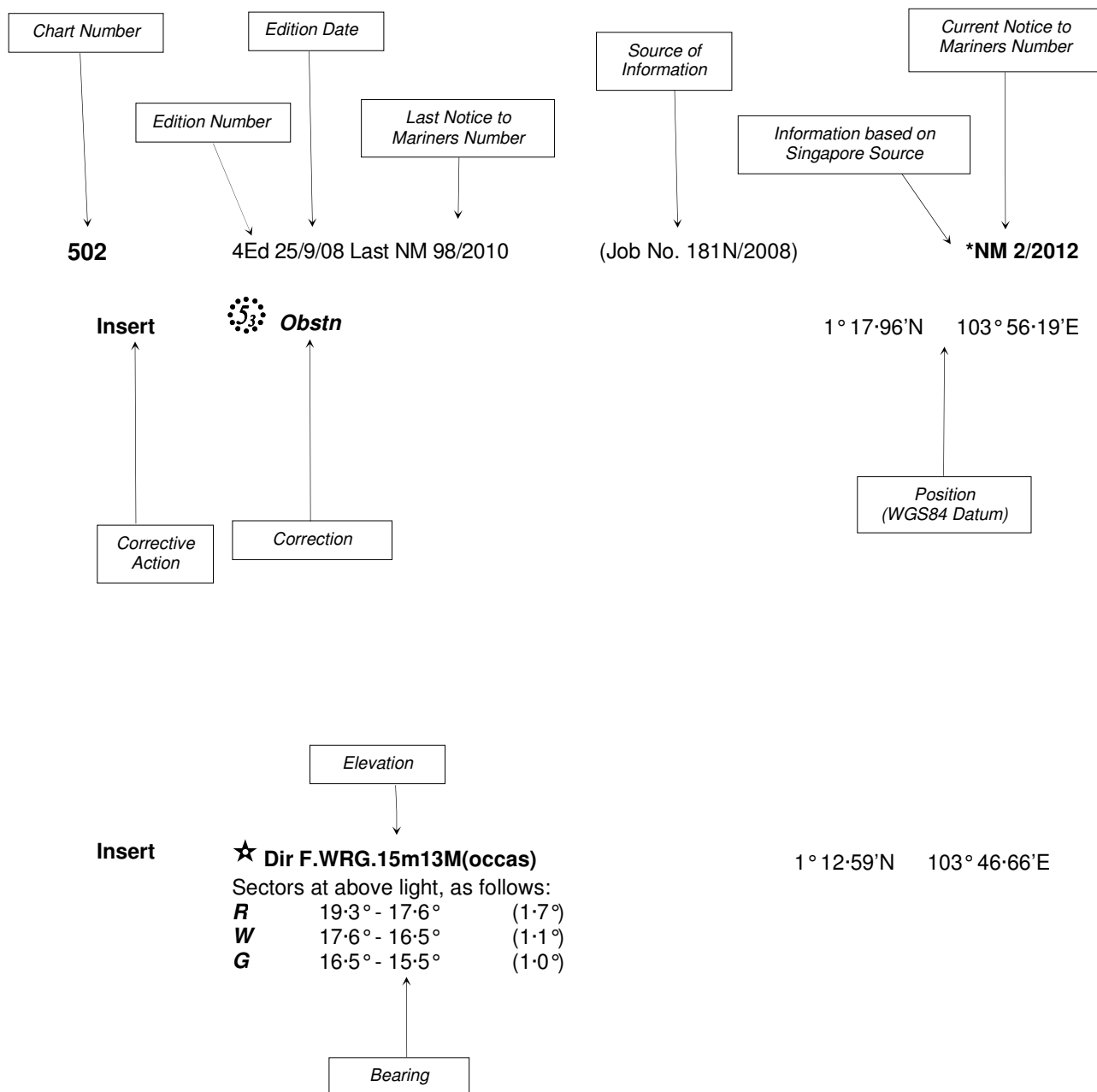
The monthly Singaporean Notices to Mariners can be accessed directly from the MPA website:
[http://www.mpa.gov.sg/sites/port_and_shipping/circulars_and_notices/singapore_notices_to_mariners\(ntm\).page](http://www.mpa.gov.sg/sites/port_and_shipping/circulars_and_notices/singapore_notices_to_mariners(ntm).page)

This service is offered free of charge.

Hydrographic Department
Maritime and Port Authority of Singapore
460 Alexandra Road
PSA Building #20-00
Singapore 119963
Tel: (65) 6375 1227
Fax: (65) 6278 7646

EXPLANATION OF FORMAT

The elements of a typical chart correction are explained below.



Notes:

- a) Notice to Mariners number followed by:
T indicates a Temporary Notice (eg. ***NM 3T/2012**).
P indicates a Preliminary Notice (eg. ***NM 4P/2012**).
- b) Bearings are true reckoned clockwise from 000° to 359°; those relating to lights are from seaward.
- c) Heights and elevations are above Mean High Water Springs.

I
INDEX OF CHARTS AND PUBLICATIONS

INDEX OF AFFECTED CHARTS

DESCRIPTION	NOTICE NO.	PAGE NO.
Index of Singaporean Charts	-	3, 4
Index of Dual Badged Charts	-	5 to 7
Index of Singaporean Publications	-	7
Index of Singapore Electronic Navigational Chart (ENC)	-	8
Singapore Port Information 2012/2013	-	9
New Edition Dual Badged Charts	-	10, 11
Numerical Index to Notices to Mariners	*56	12
Temporary and Preliminary Notices	-	13
Port Marine Notices	*57	14
Singaporean Print-On-Demand (POD) Charts	*58	14
Amendments to Publications	*59	15
Reprint of Radio Navigational Warnings	-	16
Extract of Admiralty Notices to Mariners for Dual Badged Charts	-	17
Singapore Electronic Navigational Chart (ENC) Distributors	-	18
Chart Agents for the Maritime and Port Authority of Singapore Nautical Charts and Publications	-	19

*Denotes information are based on Singaporean source.

I
INDEX OF CHARTS AND PUBLICATIONS

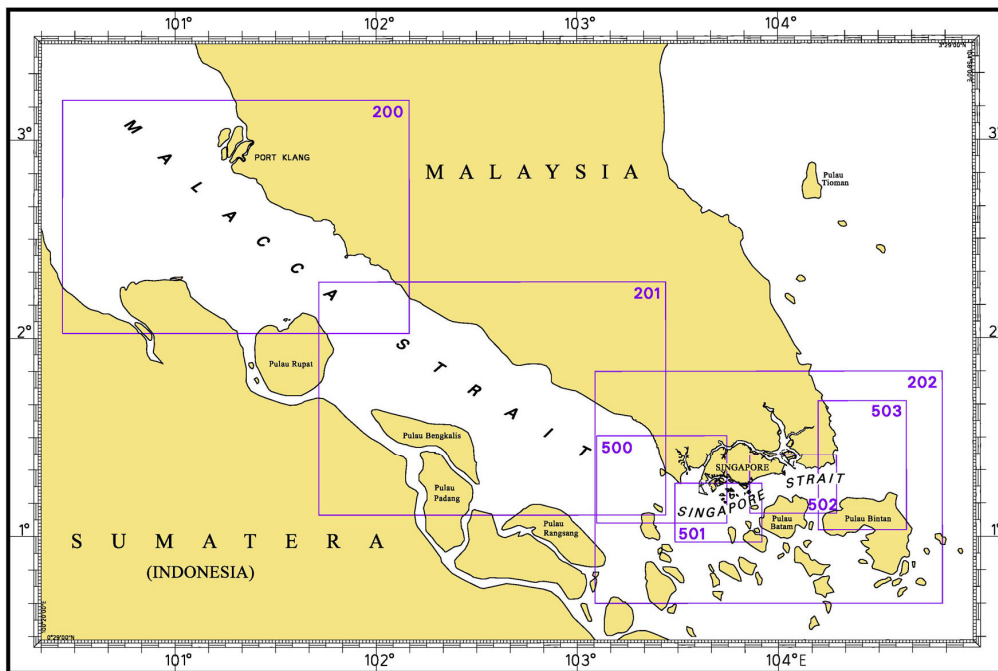
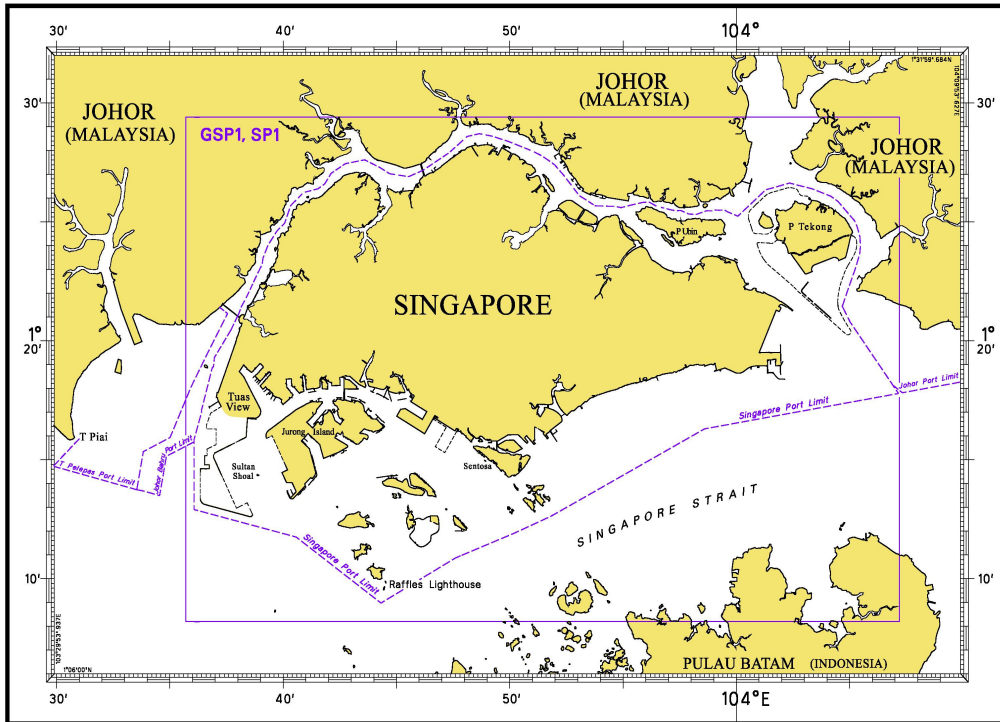
INDEX OF NOTICES

NOTICE NO.	DESCRIPTION	PAGE NO.
-	Index of Singaporean Charts	3, 4
-	Index of Dual Badged Charts	5 to 7
-	Index of Singaporean Publications	7
-	Index of Singapore Electronic Navigational Chart (ENC)	8
-	Singapore Port Information 2012/2013	9
-	New Edition Dual Badged Charts	10, 11
*56	Numerical Index to Notices to Mariners	12
-	Temporary and Preliminary Notices	13
*57	Port Marine Notices	14
*58	Singaporean Print-On-Demand (POD) Charts	14
*59	Amendments to Publications	15
-	Reprint of Radio Navigational Warnings	16
-	Extract of Admiralty Notices to Mariners for Dual Badged Charts	17
-	Singapore Electronic Navigational Chart (ENC) Distributors	18
-	Chart Agents for the Maritime and Port Authority of Singapore Nautical Charts and Publications	19

* Denotes information are based on Singaporean source.

I INDEX OF CHARTS AND PUBLICATIONS

INDEX OF SINGAPOREAN CHARTS



Notes:
Updated SINGAPOREAN Charts are available through our Print-On-Demand (POD) Chart Service. For more information, refer to Section III – Navigational Information. These charts can be purchased from our authorised Chart Agents.

I
INDEX OF CHARTS AND PUBLICATIONS

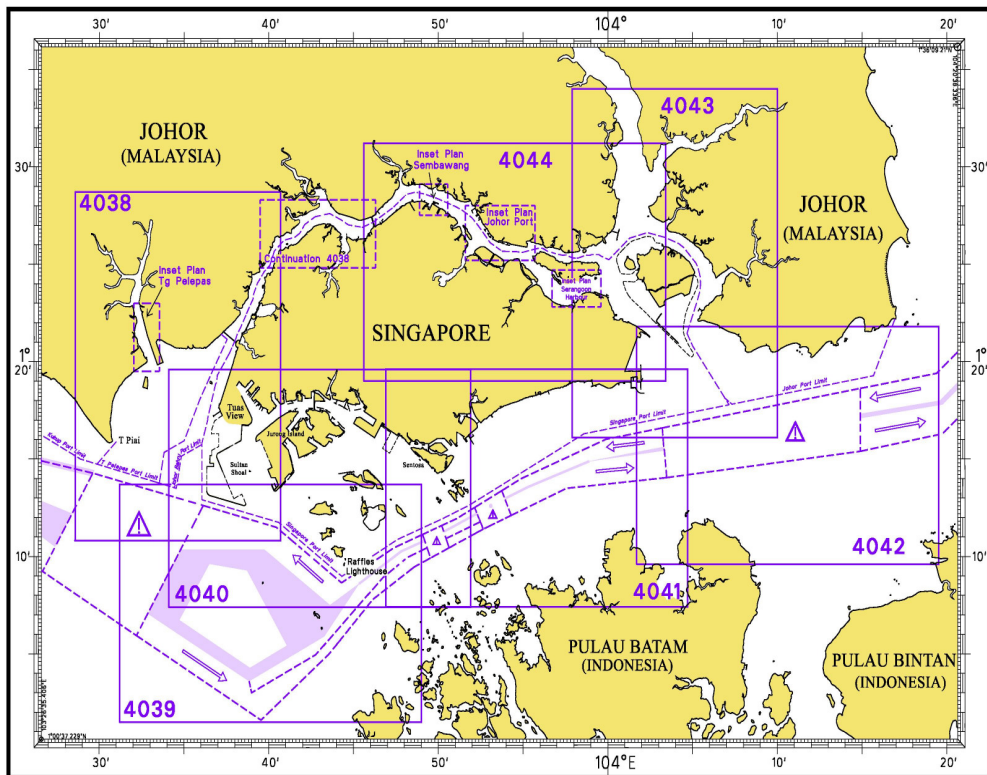
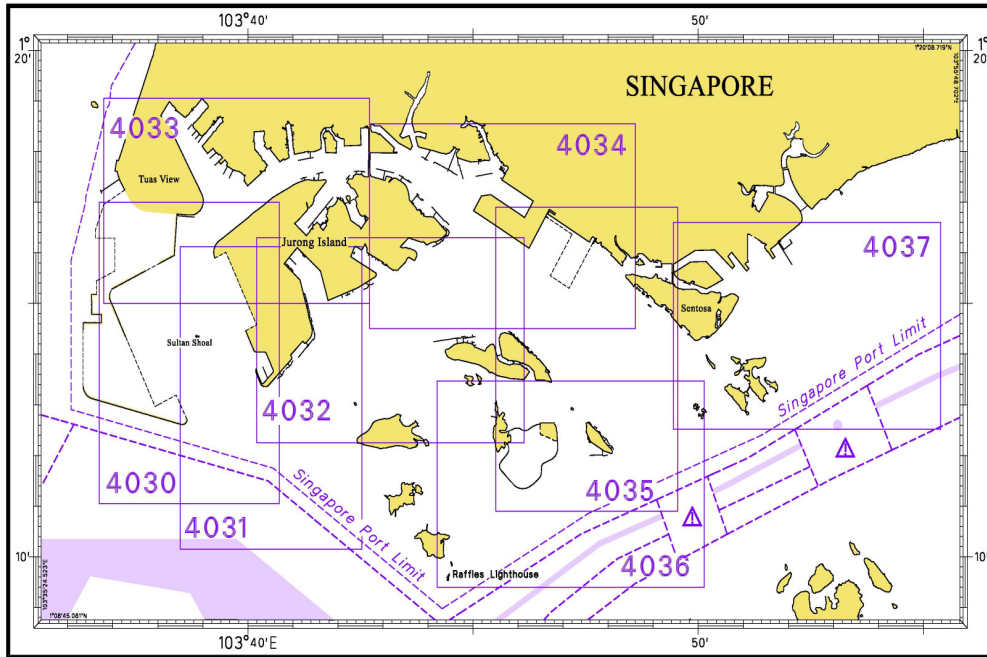
SINGAPOREAN CHART CATALOGUE

Chart No.	Chart Title	Scale 1:	Date Published of Latest Edition
1	* Symbols Abbreviations Terms and S-57 Objects	-	28/07/2011
GSP1	Anchorage and Aids to Navigation (with Area Reference)	60 000	03/05/2012
SP1	Anchorage and Aids to Navigation	60 000	03/05/2012
200	Malacca Strait - Port Klang to Tanjung Keling	200 000	22/09/2011
201	Malacca Strait - Tanjung Keling to Western Entrance of Singapore Strait	200 000	07/10/2010
202	Singapore Strait	200 000	24/09/2009
500	Malacca and Singapore Straits – Pulau Pisang to Raffles Lighthouse	75 000	07/10/2010
501	Singapore Strait – Western Part	50 000	03/05/2012
502	Singapore Strait - Eastern Part	50 000	03/05/2012
503	South China Sea - Eastern Approaches and Entrance to Singapore Strait	75 000	01/04/2010
-	Charts for Small Craft – Singapore Strait & Adjacent Waterways	10 000 to 250 000	20/01/2011

* Available at MPA website http://www.mpa.gov.sg/sites/global_navigation/publications/chart1.page

I INDEX OF CHARTS AND PUBLICATIONS

INDEX OF DUAL BADGED CHARTS



I
INDEX OF CHARTS AND PUBLICATIONS

DUAL BADGED CHART CATALOGUE

Chart No.	Chart Title	Scale 1:	Date Published of Latest Edition
4030	Port of Singapore West Jurong Anchorages and Temasek Fairway	10 000	03/05/2012
4031	Port of Singapore Western Approaches to Jurong Island	10 000	03/05/2012
4032	Port of Singapore Sinki Fairway	10 000	03/05/2012
4033	Port of Singapore Tuas Bay, West Jurong Channel and Pesek Basin	10 000	03/05/2012
4034	Port of Singapore East Jurong Channel, Pasir Panjang Terminal and West Keppel Fairway	10 000	29/09/2011
4035	Port of Singapore Western Anchorages, Jong Fairway and Cruise Bay	10 000	29/09/2011
4036	Port of Singapore Raffles Lighthouse to The Sisters	10 000	28/04/2011
4037	Port of Singapore Keppel Harbour, Tanjong Pagar Terminal and Approaches	10 000	28/04/2011
4038	Malaysia and Singapore Johor Strait – Western Part	30 000	05/08/2010
4039	Indonesia, Singapore and Malaysia Western Approaches to Main Strait	30 000	03/05/2012
4040	Singapore, Indonesia and Malaysia, Tuas View to Pulau Sakijang Bendera (S. John's Island)	30 000	03/05/2012
4041	Singapore and Indonesia, Pulau Sebarok to Changi	30 000	03/05/2012

I
INDEX OF CHARTS AND PUBLICATIONS

DUAL BADGED CHART CATALOGUE

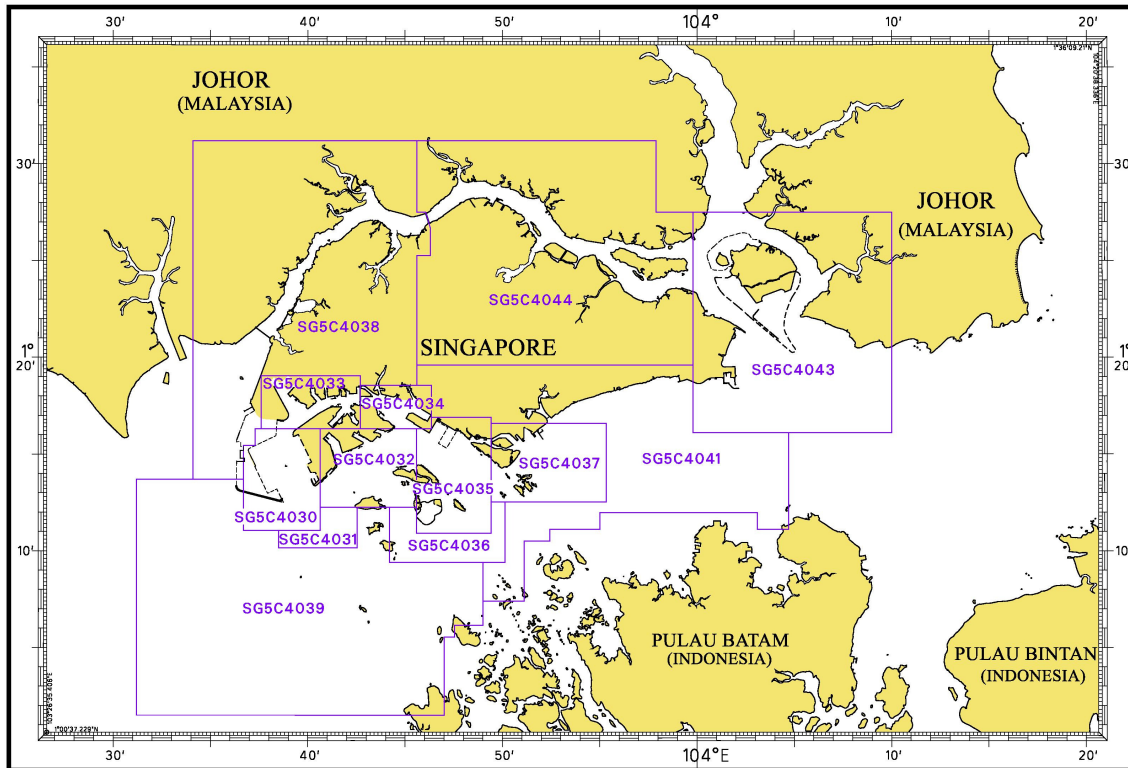
4042	Indonesia, Malaysia and Singapore, Changi to Pulau Mungging and Tanjung Buntan to Tanjung Tondang	30 000	17/02/2011
4043	Malaysia and Singapore Kuala Johor and Sungai Johor	30 000	28/07/2011
4044	Singapore and Malaysia Johor Strait - Eastern Part	30 000	28/07/2011

INDEX OF SINGAPOREAN PUBLICATIONS

Item	Title
1	Singapore Tide Tables Year 2012
2	Singapore Port Information 2012/2013

I INDEX OF CHARTS AND PUBLICATIONS

INDEX OF SINGAPORE ELECTRONIC NAVIGATIONAL CHART (ENC)



COVERAGE OF SINGAPORE ELECTRONIC NAVIGATIONAL CHART (ENC)

ENC Name	ENC Coverage	ENC Edition
SG5C4030	West Jurong Anchorages and Temasek Fairway	5 th Edition (3/05/2012)
SG5C4031	Western Approaches to Jurong Island	5 th Edition (3/05/2012)
SG5C4032	Sinki Fairway	7 th Edition (3/05/2012)
SG5C4033	Tuas Bay, West Jurong Channel and Pesek Basin	5 th Edition (3/05/2012)
SG5C4034	East Jurong Channel, Pasir Panjang Terminal and West Keppel Fairway	10 th Edition (3/05/2012)
SG5C4035	Western Anchorages, Jong Fairway and Cruise Bay	11 th Edition (3/05/2012)
SG5C4036	Raffles Lighthouse to The Sisters	6 th Edition (3/05/2012)
SG5C4037	Keppel Harbour, Tanjong Pagar Terminal and Approaches	6 th Edition (3/05/2012)
SG5C4038	Johor Strait – Western Part	5 th Edition (3/05/2012)
SG5C4039	Western Approaches to Main Strait	5 th Edition (3/05/2012)
SG5C4041	Pulau Sebarok to Changi	6 th Edition (3/05/2012)
SG5C4043	Kuala Johor and Sungai Johor	7 th Edition (3/05/2012)
SG5C4044	Johor Strait – Eastern Part	7 th Edition (3/05/2012)

II NEW PUBLICATIONS

NEW EDITION SINGAPORE PORT INFORMATION 2012/2013 PUBLISHED ON 1ST JUNE 2012.

Summary of Publication

This publication contains Port Information such as:

1. Routeing and Reporting Information

- a) Straits of Malacca and Singapore – Routeing System.
- b) Mandatory Ship Reporting in the Straits of Malacca and Singapore – STRAITREP.
- c) Rules for vessels navigating during hours of darkness through the Straits of Malacca and Singapore.
- d) Revised reporting procedures for notification and confirmation of a vessel's arrival in Singapore.
- e) Amendment to reporting procedures for vessels manoeuvring in port.
- f) Guide to VHF communication in port and Singapore Strait.
- g) VHF Radio Telephone Reporting Procedures for vessel manoeuvring within the Traffic Information Area in the East Johor Strait.
- h) Tall vessels' movements in the port waters surrounding Changi Airport.
- i) Height Restricted Areas in port.

2. Pilotage and Pilotage Exemption Information

3. Port Clearances and Reporting

- a) Port health clearance procedures for vessels arriving in Singapore.
- b) Port clearance formalities for arriving and departing vessels.
- c) Reporting of Marine incidents in port.
- d) Dissemination of passage plan to shipmasters.
- e) Conduct of mandatory Port Limit courses.
- f) Facilities for the collection of garbage from ships in Singapore.

4. Navigational Information

- a) Anchorages and fairways in the port.
- b) The use of canoes and kayaks within the port limits of Singapore.
- c) Depths of Navigational channels and fairways.
- d) Depths of rivers and Basins.
- e) Vertical and safe overhead clearances under bridges and aerial cableway.

5. Information on Aids to Navigation

- a) IALA Maritime Buoyage System.
- b) Characteristics of Aids to Navigation – List of beacons, buoys and lighthouses.

6. Information on Wharves, Docks and Berths

7. Communication – International Code of Signals

8. Nautical Services and Products

- a) Index and chart catalogue of Singaporean charts.
- b) Index and chart catalogue of Dual Badged charts.
- c) Agents for Maritime and Port Authority of Singapore publications.
- d) Singapore Electronic Navigational Chart (ENC) Catalogue and Distributors.

To Whom Will It Be Useful?

Mariners, shipping community, port users and other interested users.

Frequency / Year of Publication

Once every 2 years.

This publication would be available from the following Chart Agents:

- 1) DPM (Singapore) Pte Ltd
- 2) E.W. Liner Charts & Publications Pte Ltd
- 3) Motion Smith

II NEW PUBLICATIONS

NEW EDITION DUAL BADGED CHARTS TO BE PUBLISHED ON 16TH AUGUST 2012

Chart Number	:	4042
Title	:	Indonesia, Malaysia and Singapore Changi To Pulau Mungging and Tanjung Buntan to Tanjung Tondang
Coverage	:	Lat 01°09'55"N 01°21'75"N Long 104°01'70"E 104°19'50"E
Scale	:	1: 30 000
Date Published	:	16 th August 2012
Size of Chart	:	1100.6 x 749.5 mm
Remarks	:	This new edition includes updated surveys covering these areas : <ul style="list-style-type: none"> • Eastern Bunkering 'A' Anchorage • Cable Corridor Area • Area South of Pulau Tekong • Johor Shoal

The existing chart of the same number published on 17th February 2011 is superseded.

Chart Number	:	4043
Title	:	Malaysia and Singapore Kuala Johor and Sungai Johor
Coverage	:	Lat 01°16'10"N 01°34'00"N Long 103°57'90"E 104°10'00"E
Scale	:	1: 30 000
Date Published	:	16 th August 2012
Size of Chart	:	748.1 x 1099.6 mm
Remarks	:	This new edition includes updated surveys covering these areas : <ul style="list-style-type: none"> • Area around Pulau Tekong • Kuala Johor • Changi Creek • Area around east of Loyang Jetty • Changi General Purposes Anchorage • Man-of –War Anchorage

The existing chart of the same number published on 28th July 2011 is superseded.

II NEW PUBLICATIONS

NEW EDITION DUAL BADGED CHARTS TO BE PUBLISHED ON 16TH AUGUST 2012

Chart Number : 4044
Title : Singapore and Malaysia
Johor Strait, Eastern Part
Coverage : Lat 01°19'00"N 01°31'20"N
Long 103°45'60"E 104°03'40"E
Scale : 1: 30 000
Date Published : 16th August 2012
Size of Chart : 1100.5 x 749.5 mm
Remarks : This new edition includes updated surveys covering these areas :

- Sembawang Basin
- Dockyard Reach
- Kuala Johor
- East of Loyang Jetty
- Denman Shoal

The existing chart of the same number published on 28th July 2011 is superseded.

II
NOTICES TO MARINERS AND CHART CORRECTIONS

***(NM 56/2012) NUMERICAL INDEX TO NOTICES TO MARINERS OF 2012 (1 TO 55)**

MONTH	NOTICES TO MARINERS NO.
JANUARY 2012	1 to 7
FEBRUARY 2012	8 to 20
MARCH 2012	21 to 29
APRIL 2012	30 to 42
MAY 2012	43 to 51
JUNE 2012	52 to 55

CHART NO.	PUBLISHED	YEAR	NOTICES TO MARINERS NO.
GSP1	7 Ed 3/05/12	2012	-
SP1	7 Ed 3/05/12	2012	-
200	3 Ed 22/09/11	2012	10-23-24-25-43
201	4 Ed 7/10/10	2012	24-44-45
202	6 Ed 24/09/09	2012	30-33-34-52
500	6 Ed 7/10/10	2012	33-35
501	6 Ed 3/05/12	2012	-
502	6 Ed 3/05/12	2012	52
503	4 Ed 1/04/10	2012	-

II
TEMPORARY AND PRELIMINARY NOTICES

There is no Temporary and Preliminary Notices for this month.

III NAVIGATIONAL INFORMATION

*(NM 57/2012) PORT MARINE NOTICES

The following PMNs have been shortlisted, as they would be of particular interest to mariners.

These notices can be accessed directly from MPA website:

http://www.mpa.gov.sg/sites/port_and_shipping/circulars_and_notices/port_marine_notices.page

PMN No.	Subject
71/2012	Reclamation at Pasir Panjang Terminal and Pasir Panjang Wharves.
76/2012	Construction of sea water intake structure off Tuas View.
78/2012	Construction works at Raffles Pier off Keppel Shipyard.
80/2012	Salvage of Mano Wreck off Eastern Holding 'A' Anchorage.
82/2012	Mooring and unmooring of vessels at mooring buoys, Pasir Panjang Phase 3 & 4 Reclamation Area.

*(NM 58/2012) SINGAPOREAN PRINT-ON-DEMAND (POD) CHARTS

Print-On-Demand (POD) Charts are the most up-to-date paper nautical charts printed for navigational use. These nautical charts are produced in accordance with the International Hydrographic Organisation (IHO) chart specifications. These official nautical charts are continually updated to the latest Notices to Mariners before they are printed and sold to users.

These POD Charts include GSP1, SP1, 200, 201, 202, 500, 501, 502 and 503.

BENEFITS TO OUR CUSTOMERS

Convenience

Customers need not make numerous hand corrections to the nautical charts before use. In addition the updated POD Charts are more accurate and reliable than offset printed charts with hand corrections.

Clarity

Clarity in the presentation of updated information as compared to lithographic printed charts, where in some cases there are several overlapping corrections over existing information.

Coverage

The POD Charts cover the Malacca and Singapore Straits, from One Fathom Bank to Horsburgh Lighthouse.

III
AMENDMENTS TO PUBLICATIONS

***(NM 59/2012) UPDATING OF PUBLICATION "SINGAPORE PORT INFORMATION 2012/2013"**

1. Page 104.

DEPTHS OF NAVIGATIONAL CHANNELS AND FAIRWAYS

Amend name 'NE Corridor' to '**Eastern Corridor**' at column 'LOCATIONS'

Source: Controlling depths list dated 15.6.12

2. Delete the following:

LOCATION		DEPTHS (m)	REMARKS
Pasir Panjang Fairway	North of P24/P26	14.4m	-
	Up to P24	15.1m	-

Source: Controlling depths list dated 15.6.12

IV
REPRINT OF RADIO NAVIGATIONAL WARNINGS

The following Radio Navigational Warnings have been shortlisted, as they would be of particular interest to mariners.

TT022 (AMENDED 060130Z)

A COASTER VESSEL WAS REPORTED SUNK IN POSITION 01°10'80"N 103°34'00"E.
VESSELS ARE TO GIVE A WIDE BERTH AND NAVIGATE WITH CAUTION.

TT032 (AMENDED 260247Z)

BUFFALO ROCK ISOLATED DANGER BUOY FL(2)5S IN POSITION 01°09'9"N 103°48'25"E IS UNLIT.

TT033

SELAT PHILLIP ISOLATED DANGER BUOY FL(2)5S IN POSITION 01°05'80"N 103°43'60"E IS REPORTED ADRIFT TO A POSITION 01°07'59"N 103°45'67"E AT 110100UTC APR 2012.

TT047

RACON DELTA Q(6) FL 15S AT POSITION LAT 01°03'59"N LONG 103°38'86"E IS REPORTED UNLIT.

TT049

WRECK REMOVAL OF MANO NO 11 AND DIVING OPERATIONS IS CONDUCTED AT THE FOLLOWING COORDINATES

Pt A 01°14.98'N 103°55.08'E

Pt B 01°15.21'N 103°55.58'E

Pt C 01°14.84'N 103°55.58'E

Pt D 01°14.70'N 103°55.08'E

ALL SHIPS ARE TO KEEP WELL CLEAR OF THE AREA.

TT173

VESSELS IN EAST JOHOR STRAIT ARE ADVISED TO NAVIGATE WITH CAUTION WHEN NEAR THE PROJECT AREAS OFF PULAU TEKONG, CHANGI AND MALANG PAPAN AS SHALLOW WATER AREAS EXIST. VESSELS ARE ADVISED TO KEEP LOOKOUT FOR TUGS AND BARGES NAVIGATING NEAR THE PROJECT AREAS AND PASSENGER FERRIES CROSSING BETWEEN CHANGI AND PULAU TEKONG AND VICINITY OF PASIR GUDANG.

TT884

SALVAGE OPERATIONS UNDERWAY IN 01°13'40"N 103°57'75"E. ALL SHIPS ARE REQUESTED TO GIVE A WIDE BERTH OF AT LEAST 5 CABLES WHEN PASSING THE AREA.

TT931

VESSELS NAVIGATING IN THE SINGAPORE STRAIT ARE REQUESTED NOT TO DIRECT THEIR HIGH INTENSITY SEARCHLIGHTS SKYWARD IN THE VICINITY OF CHANGI AIRPORT TO AVOID DISRUPTION TO AIR NAVIGATION.

TT961

VESSELS INTENDING TO CROSS THE TRAFFIC SEPARATION SCHEME(TSS) OR PRECAUTIONARY AREAS IN THE SINGAPORE STRAIT DURING THE HOURS OF DARKNESS ARE RECOMMENDED TO DISPLAY THE NIGHT SIGNALS CONSISTING OF 3 ALL-ROUND GREEN LIGHTS IN A VERTICAL LINE WITH EFFECT FROM 1ST JULY 2011 AT 0000UTC (0800SGT) AS DETAILED IN MARITIME AND PORT AUTHORITY OF SINGAPORE'S PORT MARINE CIRCULAR, 02 OF 2011 DATED 30 MAY 2011.

TT997

BUFFALO ROCK LIGHT BEACON IN POSITION 01°09.41'N 103°48.8'E ARE REPORTED COLLAPSED.

ISSUED BY SINGAPORE PORT OPERATIONS CONTROL CENTRE (as at 24th June 2012)

V
**EXTRACT OF ADMIRALTY NOTICES TO MARINERS
 FOR DUAL BADGED CHARTS**

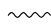


These notices can also be accessed directly from UKHO Website:

<http://www.ukho.gov.uk/ProductsandServices/MaritimeSafety/Pages/NMPublic.aspx>

**2594* SINGAPORE STRAIT – Johor Shoal South-eastwards and Selat Bulan Eastwards – Submarine cable.
 Landmark.**

Source: Maritime and Port Authority Singapore

Chart 4041 [*previous update 2367/12*] WGS84 DATUM

Insert	submarine cable,  , joining:	1° 17'·04N., 104° 03'·35E. (existing cable) 1° 17'·15N., 104° 04'·70E. (E border)
Replace	 with  PA (4)	1° 09'·19N., 103° 55'·71E.

2595* SINGAPORE STRAIT – Main Strait – Karang Banteng (Buffalo Rock) – Light-beacon.

Light List Vol. F, 2011/12, 1695.6

Source: Indonesian Notice 25/25/12

Note: Radar beacon remains unchanged.

Chart 4036 [*previous update 2363/12*] WGS84 DATUM

Amend	light-beacon to, Q.22m15M	1° 09'·433N., 103° 48'·831E.
-------	---------------------------	------------------------------

Chart 4039 [*previous update New Edition 03/05/2012*] WGS84 DATUM

Amend	light-beacon to, Q.22m15M	1° 09'·43N., 103° 48'·83E.
-------	---------------------------	----------------------------

Chart 4040 [*previous update New Edition 03/05/2012*] WGS84 DATUM

Amend	light-beacon to, Q.22m15M	1° 09'·43N., 103° 48'·83E.
-------	---------------------------	----------------------------

Chart 4041 [*previous update 2594/12*] WGS84 DATUM

Amend	light-beacon to, Q.22m15M	1° 09'·43N., 103° 48'·83E.
-------	---------------------------	----------------------------

 Updated to Admiralty Notices to Mariners Edition No. 26 of 2012 dated 28th June 2012.

MPA ENC DISTRIBUTORS

CONTACT PERSON/ DESIGNATION	ADDRESS	TELEPHONE/FAX NO./EMAIL/WEBSITE
ChartWorld GmbH	Ruhrstrasse 90, 22761 Hamburg, Germany	Tel. No.: +49 40 853 58 6942 Fax No.: +49 40 853 58 6949 Email: sales@chartworld.com
ChartWorld Asia Pacific Pte Ltd.	Frontech Centre 07-01, 15 Jalan Kilang Barat, Singapore 159357	Tel No.: +65 65133500 Website : http://www.chartworld.com
DPM (Singapore) Pte Ltd	1 Maritime Square, #09-72 HarbourFront Centre, Singapore 099253	Tel. No.: +65 6270 4060 Fax No.: +65 6276 3858 Email: sales@dpmsingapore.com.sg Website: http://www.dpmsingapore.com.sg
Maritime Information Systems (MARIS)	52, Telok Blangah Road #01-06, Telok Blangah House, Singapore 058809	Tel. No.: +65 6276 1472 Fax No.: +65 6276 1473 Email: : support@maris.sg Website: http://www.maris.no
Maritime Information Systems AS (MARIS)	Danholmen 25, 3128 Notteroy, Norway	Tel. No.: +47 33 30 42 50 Fax No.: +47 33 30 42 51 Email: : sales@maris.no Website: http://www.maris.no
Motion Smith	15 Jalan Kilang Barat #08-01/05 Frontech Centre, Singapore 159357	Tel. No.: +65 6220 5098 Fax No.: +65 6225 4902 Email: sales@motsmith.com Website: http://www.motsmith.com
Transas Marine Pacific Pte Ltd	Cyber Centre 16 & 18 Jalan Kilang Barat Singapore 159358	Tel. No.: +65 6271 0200 Fax No.: +65 6271 7300 Email: dominic@transas.com.sg Website: http://www.transas.com.sg
Vector Services Pte Ltd	196 Pandan Loop, #06-29 Pantech Business Hub Singapore 128384	Tel. No.: +65 6777 3602 Fax No.: +65 6777 9203 Email: kwchoy@pacific.net.sg
Japan Hydrographic Association Electronic Charts Division	Daiichi Sogo Bldg, 6F 1-6-6, Hanedakuko, Ota-ku Tokyo 144-0041, Japan	Tel. No.: +81 3 5708 7093 Fax No.: +81 3 5708 7094 Email: shimizu-6kj@jha.jp Website: http://www.jha.or.jp/en/jha/
Jeppesen Norway AS	P.O Box 212 , N-4371 Egersund, Norway	Tel No.: +47 51 46 4700 Fax No: +47 51 46 4701 Email: license.marine@jeppesen.com Website : http://www.jeppesen.com/marine
PRIMAR STAVANGER	Lervigsveien 36, P.O Box 60, N-4001 Stavanger, Norway	Tel. No.: +47 51 93 9500 Fax No.: +47 51 93 9501 Email: sales@ecc.no Website : http://www.primar.no
The United Kingdom Hydrographic Office	Admiralty Way, Taunton, Somerset, TA1 2DN United Kingdom	Tel. No.: +44 1823 33 7900 Fax No.: +44 1823 28 4077 Emails: ENC.SalesReports@ukho.gov.uk Website: http://www.ukho.gov.uk

Chart Agents for the Maritime and Port Authority of Singapore
Nautical Charts and Publications

Please approach any of the appointed chart agent to purchase the Singapore Nautical Charts and Publications.

CHART AGENT	ADDRESS	TELEPHONE/FAX NO./EMAIL/WEBSITE
DPM (Singapore) Pte Ltd	1 Maritime Square, #09-72 HarbourFront Centre, Singapore 099253	Tel. No.: +65 6270 4060 Fax No.: +65 6276 3858 Email: sales@dpmsingapore.com.sg Website: http://www.dpmsingapore.com.sg
E.W. Liner Charts & Publications Pte Ltd	102F, Pasir Panjang Road, #08-01, Citilink Warehouse Complex, Singapore 118530	Tel. No.: +65 6323 0773 Fax No.: +65 6323 0775 Email: ewliner@singnet.com.sg Website: http://www.ewliner.com
Motion Smith	15 Jalan Kilang Barat #08-01/05 Frontech Centre Singapore 159357	Tel. No.: +65 6220 5098 (After office hours:+65 8163 9993) Fax No.: +65 6225 4902 Email: sales@motsmith.com Website: http://www.motsmith.com

HYDROGRAPHIC NOTE - Instructions

1. Mariners are requested to notify the Chief Hydrographer, Maritime and Port Authority of Singapore, when new or suspected dangers to navigation are discovered, changes are observed in aids to navigation or where corrections to nautical publications may be necessary. Reports, which cannot be confirmed or are lacking in certain details should not be withheld.
2. Any ambiguities of time, positioning and depth should be stressed and any firm expectation of being able to check the information provided on a following voyage should be mentioned.
3. Mariners using satellite position fixing systems, eg. GPS, should provide details of equipment and datum used (where applicable). Where bearings (true or magnetic) are taken visually or by radar to fix a position, it should include more than two objects in order to provide a check on its accuracy. A position may also be defined by bearing and distance from a conspicuous object eg. beacon, lighthouse etc.
4. The note should include a tracing or a digital image of the chart used and the details should be clearly marked.
5. Echo sounders frequently register greater depths than the advertised maximum depth for the equipment, eg. a trace appearing at 50 metres may be in fact be 550 metres or even 1050 metres for equipment whose maximum depth is 500 metres. Erroneous depths caused by 2nd transmission error can usually be recognised by the following:
 - (a) the tracing being weaker than normal for the depth registered,
 - (b) the trace appearing to pass through the transmission line,
 - (c) the feathery nature of the trace.
6. Upon receipt of a hydrographic note, a Notice to Mariners may be issued. The sender's vessel or name is quoted as the source unless the same information is also received in foreign Notices to Mariners.
7. Reports of shoals, uncharted dangers and defects in aids to navigation may also be made to the appropriate Singapore Port Operations Control Centre on VHF Channels 10, 12, 14, 68 or 73.

HYDROGRAPHIC NOTE

To:

Chief Hydrographer
Maritime and Port Authority of Singapore
460 Alexandra Road PSA Building #20-00
Singapore 119963

Tel : (65) 6375 1227
Fax : (65) 6278 7646
Email : hydrographic@mpa.gov.sg

Sender's Contact Details :

Date :

Name of Vessel :

Address of Sender :

Tel : Fax :

Email :

Nature of Observation :

General Location :

Subject :

Position : Lat. Long.

Charts Used :

Date & Time of Observation :

Details :

.....

.....

Attachment :

Equipment Used :

Type of Position Fixing : GPS / DGPS Others :

Type of Echo Sounder :

Name and Signature :

Ship's/Company's Stamp :