



## SINGAPOREAN NOTICES TO MARINERS

---

SECTION	CONTENT	Page
I	Index of Charts & Publications	1
II	New Publications	9
	Notices to Mariners and Chart Corrections	10
	Temporary and Preliminary Notices	11
III	Navigational Information	12
	Amendments to Publications	13
IV	Reprint of Radio Navigational Warnings	15
V	Extract of Admiralty Notices to Mariners for Dual Badged Charts	16

---

**The monthly Notices to Mariners contain corrective information affecting charts published by the Hydrographic Department, Maritime and Port Authority of Singapore. The information contained in these Notices should be updated on the charts affected. Notices under Section II apply only to the particular Singaporean Chart(s) indicated.**

---

Mariners are requested to notify the Chief Hydrographer, Maritime and Port Authority of Singapore, immediately on the discovery of new dangers or suspected dangers to navigation and of changes or defects in aids to navigation. See Hydrographic Note on back page.

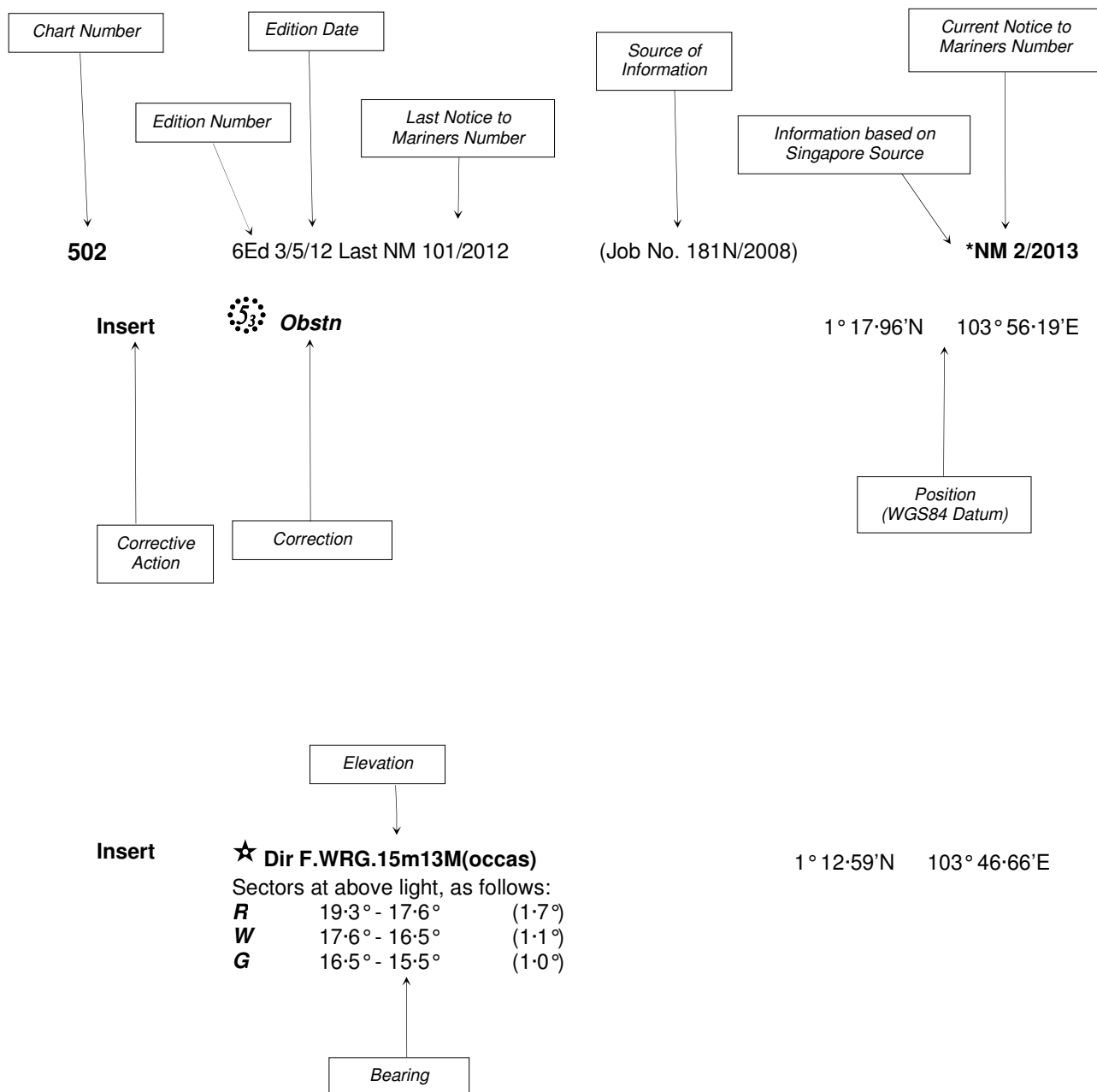
The monthly Singaporean Notices to Mariners can be accessed directly from the MPA website:  
[www.mpa.gov.sg/sites/port\\_and\\_shipping/circulars\\_and\\_notices/singapore\\_notices\\_to\\_mariners\(ntm\).page](http://www.mpa.gov.sg/sites/port_and_shipping/circulars_and_notices/singapore_notices_to_mariners(ntm).page)

This service is offered free of charge.

Hydrographic Department  
Maritime and Port Authority of Singapore  
460 Alexandra Road  
#20-00 PSA Building  
Singapore 119963  
Tel: (65) 6375 1227  
Fax: (65) 6278 7646

## EXPLANATION OF FORMAT

The elements of a typical chart correction are explained below.



**Notes:**

- a) Notice to Mariners number followed by:  
**T** indicates a Temporary Notice (eg. **\*NM 3T/2013**).  
**P** indicates a Preliminary Notice (eg. **\*NM 4P/2013**).
- b) Bearings are true reckoned clockwise from 000° to 359°; those relating to lights are from seaward.
- c) Heights and elevations are above Mean High Water Springs.

I  
INDEX OF CHARTS AND PUBLICATIONS

INDEX OF AFFECTED CHARTS

DESCRIPTION	NOTICE NO.	PAGE NO.
Index of Singaporean Charts	-	3, 4
Index of Dual Badged Charts	-	5 to 7
Index of Singaporean Publications	-	7
Index of Singapore Electronic Navigational Chart (ENC)	-	8
New Edition Dual Badged Charts	-	9
Numerical Index to Notices to Mariners of 2013	*66	10
Singaporean Chart 200	67	10
Temporary and Preliminary Notices	-	11
Singapore Port Marine Notices	*68	12
Singaporean Print-On-Demand (POD) Charts	*69	12
Amendments to Publications	*70	13, 14
Reprint of Radio Navigational Warnings	-	15
Extract of Admiralty Notices to Mariners for Dual Badged Charts	-	16 to 18
Singapore Electronic Navigational Chart (ENC) Distributors	-	19
Chart Agents for the Maritime and Port Authority of Singapore Nautical Charts and Publications	-	20

\*Denotes information are based on Singaporean source.

I  
INDEX OF CHARTS AND PUBLICATIONS

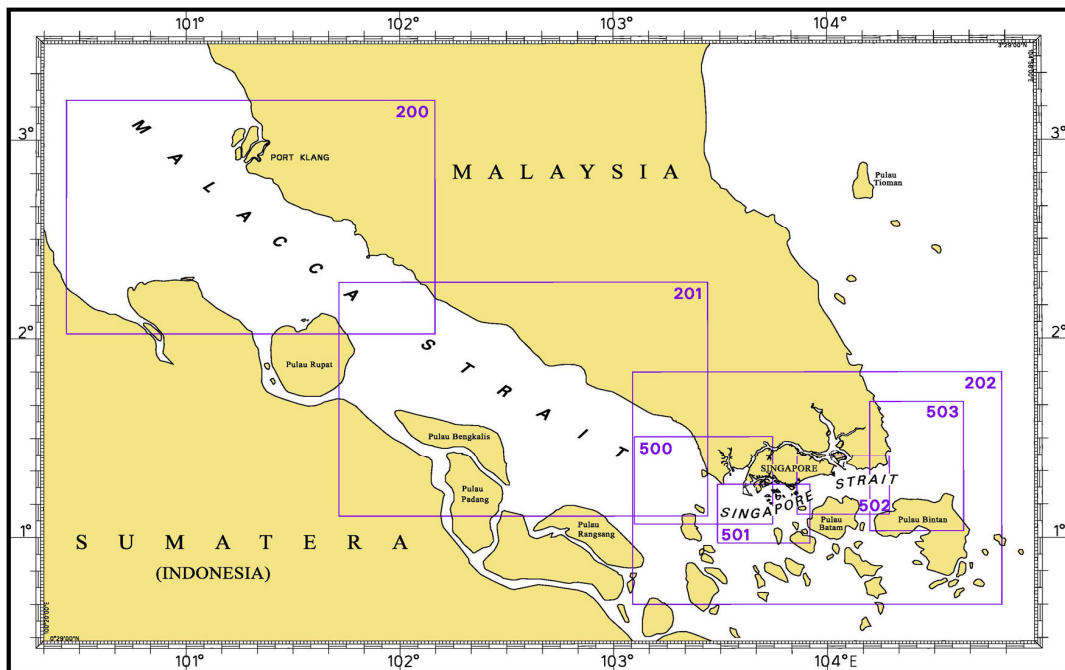
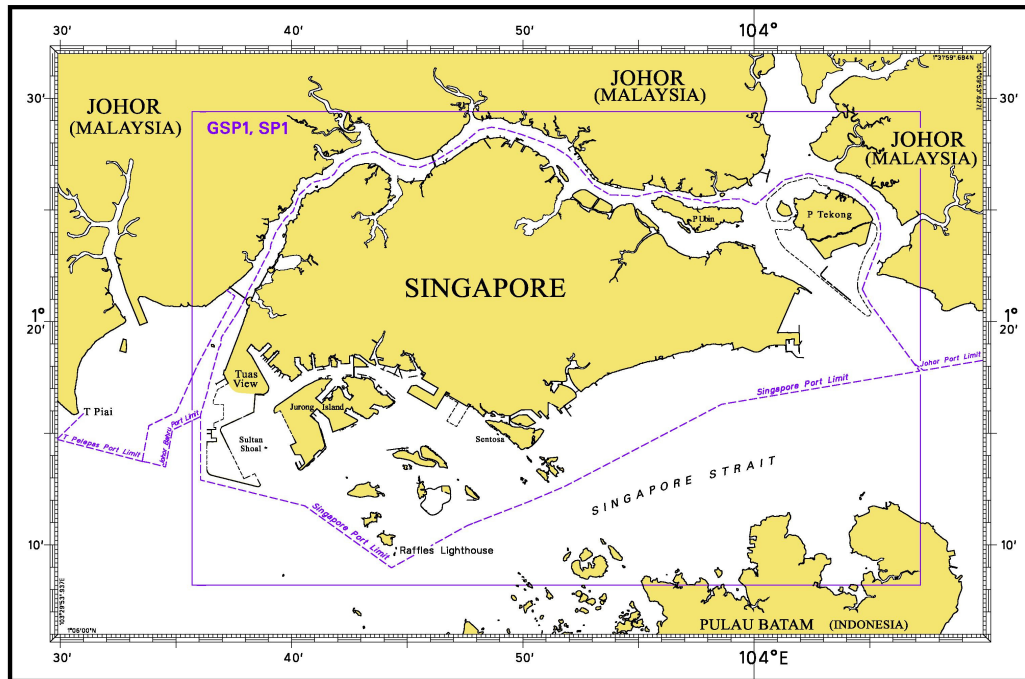
INDEX OF NOTICES

NOTICE NO.	DESCRIPTION	PAGE NO.
-	Index of Singaporean Charts	3, 4
-	Index of Dual Badged Charts	5 to 7
-	Index of Singaporean Publications	7
-	Index of Singapore Electronic Navigational Chart (ENC)	8
-	New Edition Dual Badged Charts	9
*66	Numerical Index to Notices to Mariners of 2013	10
67	Singaporean Chart 200	10
-	Temporary and Preliminary Notices	11
*68	Singapore Port Marine Notices	12
*69	Singaporean Print-On-Demand (POD) Charts	12
*70	Amendments to Publications	13, 14
-	Reprint of Radio Navigational Warnings	15
-	Extract of Admiralty Notices to Mariners for Dual Badged Charts	16 to 18
-	Singapore Electronic Navigational Chart (ENC) Distributors	19
-	Chart Agents for the Maritime and Port Authority of Singapore Nautical Charts and Publications	20

\* Denotes information are based on Singaporean source.

# I INDEX OF CHARTS AND PUBLICATIONS

## INDEX OF SINGAPOREAN CHARTS



Notes:  
Updated SINGAPOREAN Charts are available through our Print-On-Demand (POD) Chart Service. For more information, refer to Section III – Navigational Information. These charts can be purchased from our authorised Chart Agents.

I  
INDEX OF CHARTS AND PUBLICATIONS

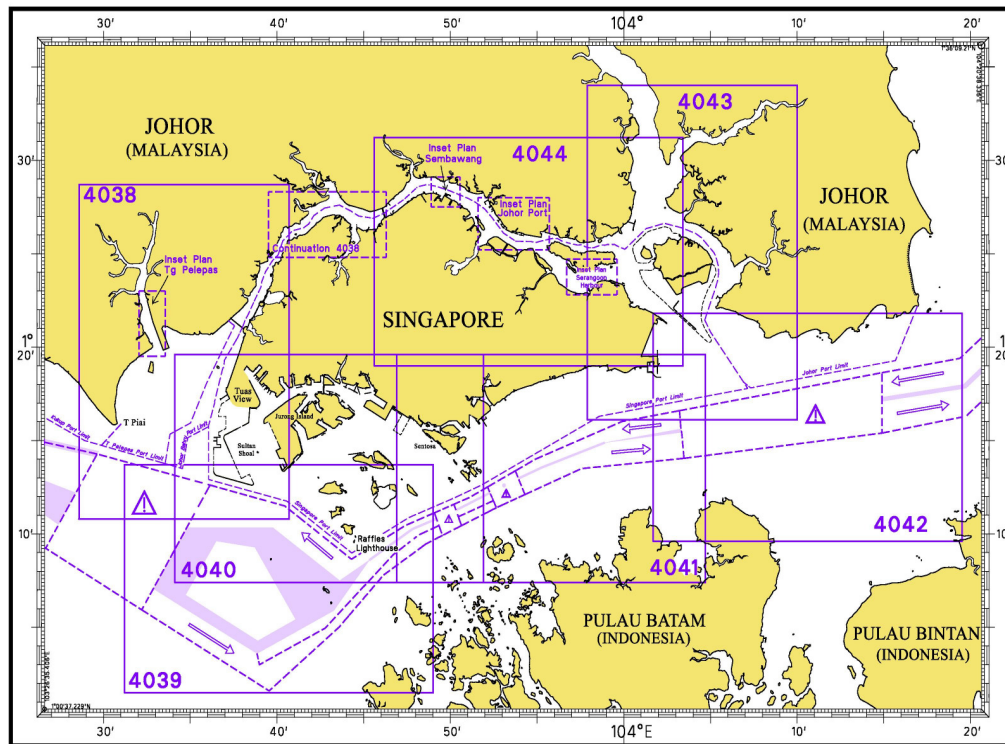
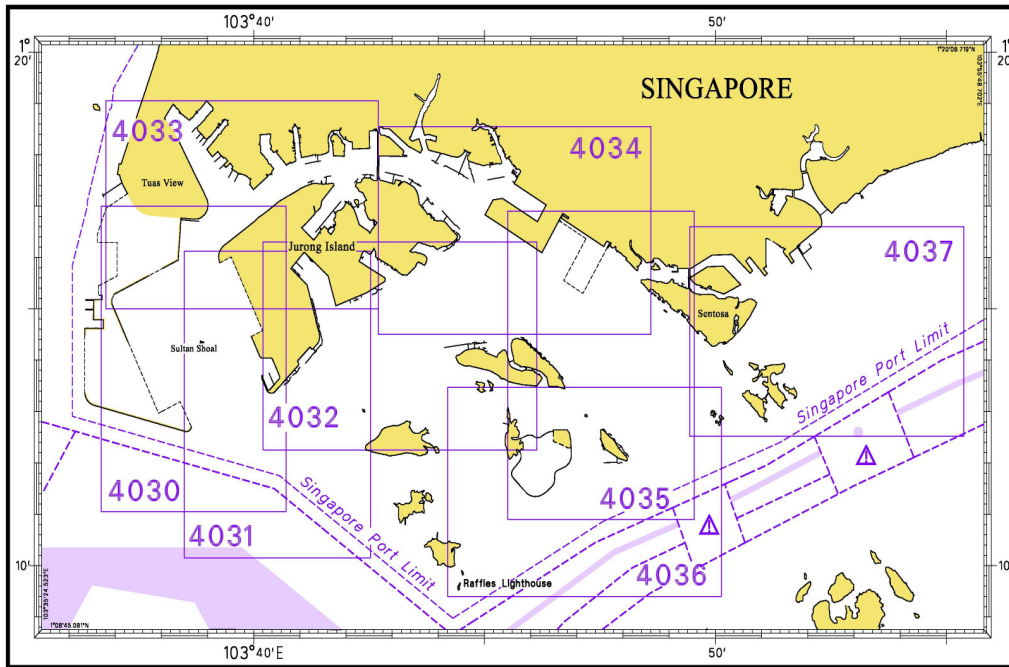
## SINGAPOREAN CHART CATALOGUE

Chart No.	Chart Title	Scale 1:	Date Published of Latest Edition
1	* Symbols Abbreviations Terms and S-57 Objects	-	28/07/2011
GSP1	Anchorage and Aids to Navigation (with Area Reference)	60 000	16/05/2013
SP1	Anchorage and Aids to Navigation	60 000	16/05/2013
200	Malacca Strait - Port Klang to Tanjung Keling	200 000	22/09/2011
201	Malacca Strait - Tanjung Keling to Western Entrance of Singapore Strait	200 000	07/10/2010
202	Singapore Strait	200 000	24/09/2009
500	Malacca and Singapore Straits – Pulau Pisang to Raffles Lighthouse	75 000	07/10/2010
501	Singapore Strait – Western Part	50 000	03/05/2012
502	Singapore Strait - Eastern Part	50 000	03/05/2012
503	South China Sea - Eastern Approaches and Entrance to Singapore Strait	75 000	01/04/2010
-	Charts for Small Craft – Singapore Strait & Adjacent Waterways	10 000 to 250 000	03/01/2013

\* Available at MPA website [http://www.mpa.gov.sg/sites/global\\_navigation/publications/chart1.page](http://www.mpa.gov.sg/sites/global_navigation/publications/chart1.page)

I  
**INDEX OF CHARTS AND PUBLICATIONS**

**INDEX OF DUAL BADGED CHARTS**



I  
INDEX OF CHARTS AND PUBLICATIONS

**DUAL BADGED CHART CATALOGUE**

<b>Chart No.</b>	<b>Chart Title</b>	<b>Scale 1:</b>	<b>Date Published of Latest Edition</b>
4030	Port of Singapore West Jurong Anchorages and Temasek Fairway	10 000	03/05/2012
4031	Port of Singapore Western Approaches to Jurong Island	10 000	03/05/2012
4032	Port of Singapore Sinki Fairway	10 000	03/05/2012
4033	Port of Singapore Tuas Bay, West Jurong Channel and Pesek Basin	10 000	03/05/2012
4034	Port of Singapore East Jurong Channel, Pasir Panjang Terminal and West Keppel Fairway	10 000	11/04/2013
4035	Port of Singapore Western Anchorages, Jong Fairway and Cruise Bay	10 000	27/09/2012
4036	Port of Singapore Raffles Lighthouse to The Sisters	10 000	25/04/2013
4037	Port of Singapore Keppel Harbour, Tanjong Pagar Terminal and Approaches	10 000	25/04/2013
4038	Malaysia and Singapore Johor Strait – Western Part	30 000	05/08/2010
4039	Indonesia, Singapore and Malaysia Western Approaches to Main Strait	30 000	03/05/2012
4040	Singapore, Indonesia and Malaysia, Tuas View to Pulau Sakijang Bendera (S. John's Island)	30 000	09/05/2013
4041	Singapore and Indonesia, Pulau Sebarok to Changi	30 000	09/05/2013

**I**  
**INDEX OF CHARTS AND PUBLICATIONS**

**DUAL BADGED CHART CATALOGUE**

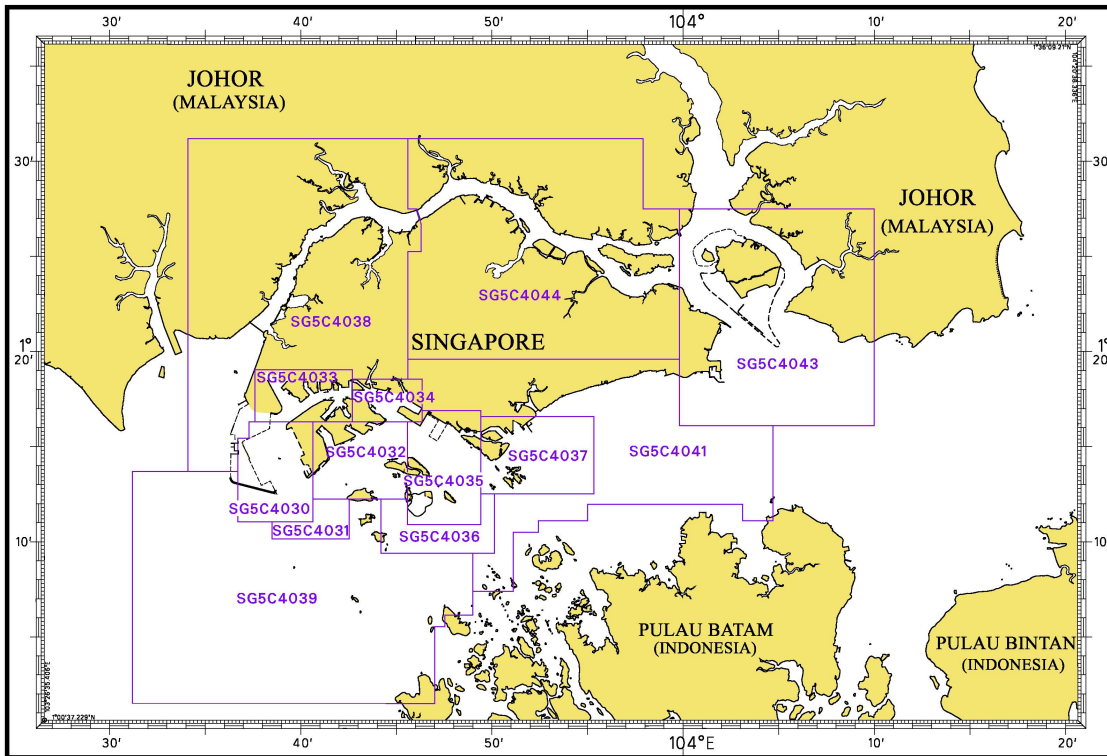
4042	Indonesia, Malaysia and Singapore, Changi to Pulau Mungging and Tanjung Buntan to Tanjung Tondang	30 000	16/08/2012
4043	Malaysia and Singapore Kuala Johor and Sungai Johor	30 000	16/08/2012
4044	Singapore and Malaysia Johor Strait - Eastern Part	30 000	16/08/2012

**INDEX OF SINGAPOREAN PUBLICATIONS**

Item	Title
1	Singapore Tide Tables Year 2013
2	Singapore Port Information 2012/2013

# I INDEX OF CHARTS AND PUBLICATIONS

## INDEX OF SINGAPORE ELECTRONIC NAVIGATIONAL CHART (ENC)



## COVERAGE OF SINGAPORE ELECTRONIC NAVIGATIONAL CHART (ENC)

ENC Name	ENC Coverage	ENC Edition
SG5C4030	West Jurong Anchorages and Temasek Fairway	5 <sup>th</sup> Edition (3/05/2012)
SG5C4031	Western Approaches to Jurong Island	5 <sup>th</sup> Edition (3/05/2012)
SG5C4032	Sinki Fairway	7 <sup>th</sup> Edition (3/05/2012)
SG5C4033	Tuas Bay, West Jurong Channel and Pesek Basin	5 <sup>th</sup> Edition (3/05/2012)
SG5C4034	East Jurong Channel, Pasir Panjang Terminal and West Keppel Fairway	11 <sup>th</sup> Edition (11/04/2013)
SG5C4035	Western Anchorages, Jong Fairway and Cruise Bay	13 <sup>th</sup> Edition (25/04/2013)
SG5C4036	Raffles Lighthouse to The Sisters	6 <sup>th</sup> Edition (3/05/2012)
SG5C4037	Keppel Harbour, Tanjong Pagar Terminal and Approaches	7 <sup>th</sup> Edition (25/04/2013)
SG5C4038	Johor Strait – Western Part	5 <sup>th</sup> Edition (3/05/2012)
SG5C4039	Western Approaches to Main Strait	5 <sup>th</sup> Edition (3/05/2012)
SG5C4041	Pulau Sebarok to Changi	7 <sup>th</sup> Edition (9/05/2013)
SG5C4043	Kuala Johor and Sungai Johor	8 <sup>th</sup> Edition (16/08/2012)
SG5C4044	Johor Strait – Eastern Part	8 <sup>th</sup> Edition (16/08/2012)

## II NEW PUBLICATIONS

### NEW EDITION DUAL BADGED CHART TO BE PUBLISHED ON 29<sup>TH</sup> AUGUST 2013

**Chart Number** : 4043  
**Title** : Malaysia and Singapore  
                   : Kuala Johor and Sungai Johor  
**Coverage** : Lat 01° 16'·10 N 01° 34'·00 N  
                   : Long 103° 57'·90 E 104° 10'·00 E  
**Scale** : 1: 30 000  
**Date Published** : 29<sup>th</sup> August 2013  
**Size of Chart** : 748·1 x 1099·6 mm  
**Descriptions** : This new edition includes changes to depths from the latest surveys in the area around Pulau Tekong, Kuala Johor, north of Pulau Ubin, cable corridor area and the Eastern anchorages.

The existing chart of the same number published on 16<sup>th</sup> August 2012 is superseded.

---

**Chart Number** : 4044  
**Title** : Singapore and Malaysia  
                   : Johor strait, Eastern Part  
**Coverage** : Lat 01° 19'·00 N 01° 31'·20 N  
                   : Long 103° 45'·60 E 104° 03'·40 E  
**Scale** : 1: 30 000  
**Date Published** : 29<sup>th</sup> August 2013  
**Size of Chart** : 1100·5 x 749·5 mm  
**Descriptions** : This new edition includes changes to depths from the latest surveys in the area at Sembawang Shipyard, Dockyard Reach, north of Pulau Ubin, north of Pulau Tekong and Kuala Johor.

The existing chart of the same number published on 16<sup>th</sup> August 2012 is superseded.

---

**II**  
**NOTICES TO MARINERS AND CHART CORRECTIONS**

\*(NM 66/2013) NUMERICAL INDEX TO NOTICES TO MARINERS OF 2013 (1 TO 65)

MONTH	NOTICES TO MARINERS NO.
JANUARY 2013	1 to 9
FEBRUARY 2013	10 to 27
MARCH 2013	28 to 39
APRIL 2013	40 to 49
MAY 2013	50 to 57
JUNE 2013	58 to 65

---

CHART NO.	PUBLISHED	YEAR	NOTICES TO MARINERS NO.
GSP1, SP1	8 Ed 16/05/13	2013	58-59-60
200	3 Ed 22/09/11	2013	4-61
201	4 Ed 7/10/10	2013	17-18-19-20-61
202	6 Ed 24/09/09	2013	5-6-15-17-18-19-21-32-33-35
500	6 Ed 7/10/10	2013	2-17-18-19
501	6 Ed 3/05/12	2013	2-6-22-29-32-33-40
502	6 Ed 3/05/12	2013	3-5-10-12-14-16-21-28-40-42-44-52
503	4 Ed 1/04/10	2013	21

---

<b>200</b>	3 Ed 22/09/11 Last NM 61/2013	(Admiralty Notice No. 26/2808/2013)	<b>NM 67/2013</b>
<b>Insert</b>	legend, <i>Less water reported (2013)</i> , centred on:	2° 19·80'N	101° 57·82'E

---

**II**  
**TEMPORARY AND PRELIMINARY NOTICES**

NIL

### III NAVIGATIONAL INFORMATION

**\*(NM 68/2013) SINGAPORE PORT MARINE NOTICES**

The following Port Marine Notices have been shortlisted, as they would be of particular interest to mariners.

These notices can be accessed directly from MPA website:  
[www.mpa.gov.sg/sites/port\\_and\\_shipping/circulars\\_and\\_notices/port\\_marine\\_notices.page](http://www.mpa.gov.sg/sites/port_and_shipping/circulars_and_notices/port_marine_notices.page)

<b>PMN No.</b>	<b>Subject</b>
71/2013	Dredging works at seafront of 48 Tuas Road in Northern Tuas Basin.
72/2013	Construction of Jetty off Temasek Fairway.
77/2013	Reclamation of Ayer Chawan Basin, Jurong Island.
78/2013	Mooring and unmooring of vessels at mooring buoys at Banyan Basin, Jurong Island.
79/2013	Soil investigation works off Tuas View.
83/2013	Dumping of excavated materials off Tuas View Extension.

**\*(NM 69/2013) SINGAPOREAN PRINT-ON-DEMAND (POD) CHARTS**

Print-On-Demand (POD) Charts are the most up-to-date paper nautical charts printed for navigational use. These nautical charts are produced in accordance with the International Hydrographic Organisation (IHO) chart specifications. These official nautical charts are continually updated to the latest Notices to Mariners before they are printed and sold to users.

These POD Charts include 200, 201, 202, 500, 501, 502 and 503.

**BENEFITS TO OUR CUSTOMERS**

**Convenience**

Customers need not make numerous hand corrections to the nautical charts before use. In addition the updated POD Charts are more accurate and reliable than offset printed charts with hand corrections.

**Clarity**

Clarity in the presentation of updated information as compared to lithographic printed charts, where in some cases there are several overlapping corrections over existing information.

**Coverage**

The POD Charts cover the Malacca and Singapore Straits, from One Fathom Bank to Horsburgh Lighthouse.

### III AMENDMENTS TO PUBLICATIONS

**\*(NM 70/2013) UPDATING OF PUBLICATION "SINGAPORE PORT INFORMATION 2012/2013"**

1. Page 149

**CHARACTERISTICS OF AIDS TO NAVIGATION**

Amend the following:

<b>Name of Beacon/Buoy</b>	<b>Position Lat. N Long. E Deg Min</b>	<b>Structure Colour &amp; Shape</b>	<b>Light Characteristic</b>	<b>Owner</b>
Sembawang Buoy	<b>01 28.216 103 49.422</b>	Yellow pillar with X topmark	Fl.Y.4s	Sembawang Shipyard

Source: HD/HE025/74/2013

2. Page 165

**WHARVES AND BERTHS**

Item 20 - Amend the following:

<b>Berth</b>	<b>Length of Berth</b>	<b>Depth Alongside (Year Surveyed)</b>	<b>Controlling Depth In Approaches</b>
<b>1A } 1B } 1C }</b>	327m	<b>15.9m (2013)</b>	-

Source: HD/HY Code E00101313

Item 22 - Amend the following:

<b>Berth</b>	<b>Length of Berth</b>	<b>Max LOA</b>	<b>Depth Alongside (Year Surveyed)</b>	<b>Controlling Depth In Approaches</b>
<b>J2A</b>	150m	-	<b>6.3m (2013)</b>	6.8m

Source: HD/HY Code J00101613

3. Page 168

Item 32 - Amend the following:

<b>Single Buoy Mooring</b>	<b>Radius of Swinging Circle</b>	<b>Depth Alongside (Year Surveyed)</b>	<b>Controlling Depth In Approaches</b>
<b>Shell SBM</b>	457m	<b>24.3m (2013)</b>	-

Source: HD/HY Code F00102713

**III**  
**AMENDMENTS TO PUBLICATIONS**

4. Page 182

**DOCKS AND REPAIR BERTHS**

**TUAS-SEMCORP MARINE TUAS SHIPYARD (1° 15.1'N 103° 36.6'E)**

Insert the following:

<b>Berth</b>	<b>Length of Berth</b>	<b>Depth Alongside (Year Surveyed)</b>
<b>YST 01</b>	<b>187m</b>	<b>11.9m (2013)</b>
<b>YST 02</b>	<b>363m</b>	<b>7.6m (2013)</b>
<b>YST 03</b>	<b>363m</b>	<b>8.6m (2013)</b>
<b>YST 05</b>	<b>363m</b>	<b>8.8m (2013)</b>
<b>YST 06</b>	<b>363m</b>	<b>8.9m (2013)</b>
<b>YST 07</b>	<b>363m</b>	<b>8.5m (2013)</b>
<b>YST 08</b>	<b>363m</b>	<b>8.7m (2013)</b>
<b>YST 09</b>	<b>363m</b>	<b>8.6m (2013)</b>
<b>YST 10</b>	<b>363m</b>	<b>8.7m (2013)</b>
<b>YST 11</b>	<b>363m</b>	<b>14.6m (2013)</b>
<b>YST 12</b>	<b>363m</b>	<b>8.5m (2013)</b>

Source: HD/HY Code G00102713 and G00102813

---

**IV**  
**REPRINT OF RADIO NAVIGATIONAL WARNINGS**

The following Radio Navigational Warnings have been shortlisted, as they would be of particular interest to mariners.

TT100  
REPORT OF TOMPOK UTARA BEACON MISSING.

TT106  
NP 1 BUOY FL.R.4S AT POSITION LAT 01° 24.70'N LONG 103° 59.99'E WAS REPORTED ADRIFT.

TT173  
VESSELS IN EAST JOHOR STRAIT ARE ADVISED TO NAVIGATE WITH CAUTION WHEN NEAR THE PROJECT AREAS OFF PULAU TEKONG, CHANGI AND MALANG PAPAN AS SHALLOW WATER AREAS EXIST. VESSELS ARE ADVISED TO KEEP LOOKOUT FOR TUGS AND BARGES NAVIGATING NEAR THE PROJECT AREAS AND PASSENGER FERRIES CROSSING BETWEEN CHANGI AND PULAU TEKONG AND VICINITY OF PASIR GUDANG.

TT961  
VESSELS INTENDING TO CROSS THE TRAFFIC SEPARATION SCHEME(TSS) OR PRECAUTIONARY AREAS IN THE SINGAPORE STRAIT DURING THE HOURS OF DARKNESS ARE RECOMMENDED TO DISPLAY THE NIGHT SIGNALS CONSISTING OF 3 ALL-ROUND GREEN LIGHTS IN A VERTICAL LINE WITH EFFECT FROM 1ST JULY 2011 AT 010000UTC (0800SGT) AS DETAILED IN MARITIME AND PORT AUTHORITY OF SINGAPORE'S PORT MARINE CIRCULAR, 02 OF 2011 DATED 30 MAY 2011.

---

ISSUED BY SINGAPORE PORT OPERATIONS CONTROL CENTRE (as at 23<sup>rd</sup> June 2013)

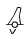
V  
**EXTRACT OF ADMIRALTY NOTICES TO MARINERS  
 FOR DUAL BADGED CHARTS**

These notices can also be accessed directly from UKHO Website:  
[www.ukho.gov.uk/ProductsandServices/MaritimeSafety/Pages/NMPublic.aspx](http://www.ukho.gov.uk/ProductsandServices/MaritimeSafety/Pages/NMPublic.aspx)

**2007 SINGAPORE – Jurong Island – Helios Terminal North-westwards, Sembawang Shipyard, Felkin Spit Southwards, Serangoon Harbour Southwards, Pulau Tekong Kechil North-westwards and P. Malang Berdaun South-westwards – Buoyage. Depths. Obstructions.**

Source: Maritime and Port Authority of Singapore

**Chart 4030** [ *previous update 1104/13* ] WGS84 DATUM

Delete  **FI(2)Y.4s Helios 1** 1° 13'·980N., 103° 40'·120E.

**Chart 4031** [ *previous update 1104/13* ] WGS84 DATUM

Delete  **FI(2)Y.4s Helios 1** 1° 13'·980N., 103° 40'·120E.

**Chart 4038** [ *previous update 1104/13* ] WGS84 DATUM

Delete  **FI(2)Y.4s Helios 1** 1° 13'·98N., 103° 40'·12E.

**Chart 4042** [ *previous update 1108/13* ] WGS84 DATUM

Insert  **FI.Y.4s NEA - CHG** 1° 20'·71N., 104° 04'·98E.

**Chart 4043** [ *previous update 1552/13* ] WGS84 DATUM

Insert  **FI.Y.4s NEA - CHG** 1° 20'·71N., 104° 04'·98E.

 **FI.Y.2s NEA - PTK** (a) 1° 25'·69N., 104° 00'·66E.

Delete depth  $12_6$  , adjacent to: (a) above

**Chart 4044 (plan A, Serangoon Harbour)** [ *previous update 1552/13* ] WGS84 DATUM

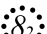
Insert  **FI.Y.4s NEA - SRG** 1° 23'·195N., 103° 57'·222E.

**Chart 4044 (plan B, Pelabuhan Johor (Johor Port))** [ *previous update 1552/13* ] WGS84 DATUM

Insert  **FI.Y.4s NEA - SLT** 1° 26'·900N., 103° 51'·800E.

**Chart 4044 (plan C, Sembawang)** [ *previous update 1552/13* ] WGS84 DATUM

Insert  **Obstn** 1° 28'·102N., 103° 49'·759E.

Replace depth  $6_8$  with  **Obstn** 1° 28'·123N., 103° 49'·703E.

**V**  
**EXTRACT OF ADMIRALTY NOTICES TO MARINERS**  
**FOR DUAL BADGED CHARTS**

**2007 SINGAPORE – Jurong Island – Helios Terminal North-westwards, Sembawang Shipyard, Felkin Spit Southwards, Serangoon Harbour Southwards, Pulau Tekong Kechil North-westwards and P. Malang Berdaun South-westwards – Buoyage. Depths. Obstructions. (continued)**

Source: Maritime and Port Authority of Singapore

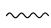
**Chart 4044** [ *previous update 1552/13*] WGS84 DATUM

Insert	 <b>FI.Y.2s NEA - PTK</b>	(a)	1° 25'·69N., 104° 00'·66E.
	 <b>FI.Y.4s NEA - SLT</b>		1° 26'·90N., 103° 51'·80E.
	 <b>FI.Y.4s NEA - SRG</b>		1° 23'·20N., 103° 57'·22E.
Delete	depth <i>12<sub>6</sub></i> , adjacent to:	(a)	above

**2008 INDONESIA – Sumatera – East Coast – Pulau Batam to Pulau Bangka – Submarine cable.**

Source: Indonesian Notice 6/48/13

**Chart 4042** [ *previous update 2007/13*] WGS84 DATUM

Insert	Submarine cable,  , joining	1° 10'·00N., 104° 08'·35E. (shore)
		1° 10'·01N., 104° 11'·04E.
		1° 09'·45N., 104° 11'·61E. (S border)


**2448 SINGAPORE – Terumbu Pandan West-north-westwards and Johor Strait – P. Merambong East-north-eastwards, T. Bunga South-eastwards and Town Reach – Buoyage. Wreck. Depth.**

Source: Maritime and Port Authority of Singapore

**Chart 4032** [ *previous update 1552/13*] WGS84 DATUM

Insert	 <b>FI.Y.4s NEA-CYR</b>	1° 15'·72N., 103° 44'·74E.
--------	--	----------------------------

**Chart 4034** [ *previous update New edition 11/04/2013*] WGS84 DATUM

Insert	 <b>FI.Y.4s NEA-CYR</b>	1° 15'·72N., 103° 44'·74E.
--------	--	----------------------------

**Chart 4038** [ *previous update 2007/13*] WGS84 DATUM

Insert	 <b>FI.Y.4s NEA-TUA</b>	1° 19'·22N., 103° 37'·47E.
	 <b>Wk</b>	(a)
Delete	depth <i>16<sub>4</sub></i> , close E of:	(a)
		above

**Chart 4038 (panel A, Town Reach)**[ *previous update 2007/13*] WGS84 DATUM

Insert	 <b>FI.Y.4s NEA-LCK</b>	1° 27'·57N., 103° 43'·59E.
--------	--	----------------------------

V  
**EXTRACT OF ADMIRALTY NOTICES TO MARINERS  
 FOR DUAL BADGED CHARTS**

**2448 SINGAPORE – Terumbu Pandan West-north-westwards and Johor Strait – P. Merambong East-north-eastwards, T. Bunga South-eastwards and Town Reach – Buoyage. Wreck. Depth. (continued)**

**Chart 4040** [ *previous update New Edition 09/05/2013*] WGS84 DATUM

Insert	 <b>Fl.Y.4s NEA-CYR</b>	1° 15'·72N., 103° 44'·74E.
	 <b>Fl.Y.4s NEA-TUA</b>	1° 19'·22N., 103° 37'·47E.

**2811 SINGAPORE – Jurong Island – Banyan Basin – Jetty. Dredged areas. Legends. Berths. Depths.**

Source: Maritime and Port Authority of Singapore

**Chart 4031** [ *previous update 2007/13*] WGS84 DATUM

Insert	the accompanying block, showing new jetty, dredged areas, legends, berths and amendments to depths, centred on:	1° 15'·930N., 103° 41'·210E.
--------	---	------------------------------

**Chart 4032** [ *previous update 2448/13*] WGS84 DATUM

Insert	the accompanying block, showing new jetty, dredged areas, legends, berths and amendments to depths, centred on:	1° 15'·900N., 103° 41'·130E.
--------	---	------------------------------

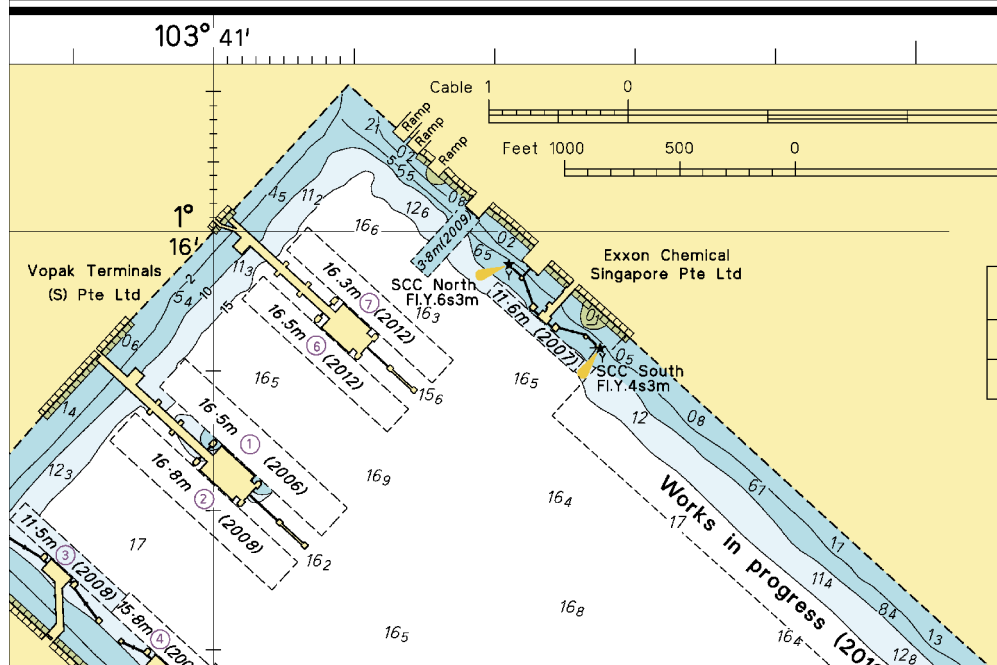
**Chart 4033** [ *previous update 1105/13*] WGS84 DATUM

Insert	the accompanying block, showing new jetty, centred on:	1° 15'·900N., 103° 41'·120E.
--------	--	------------------------------

---

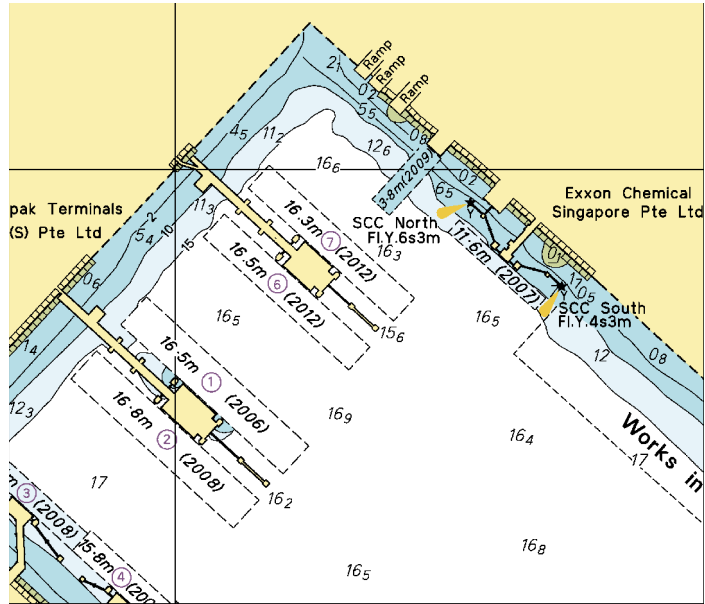
Updated to Admiralty Notices to Mariners Edition No. 26 of 2013 dated 27<sup>th</sup> June 2013.

To accompany Notice to Mariners 2811/13. Image Size (mm) 87.9 by 132.1



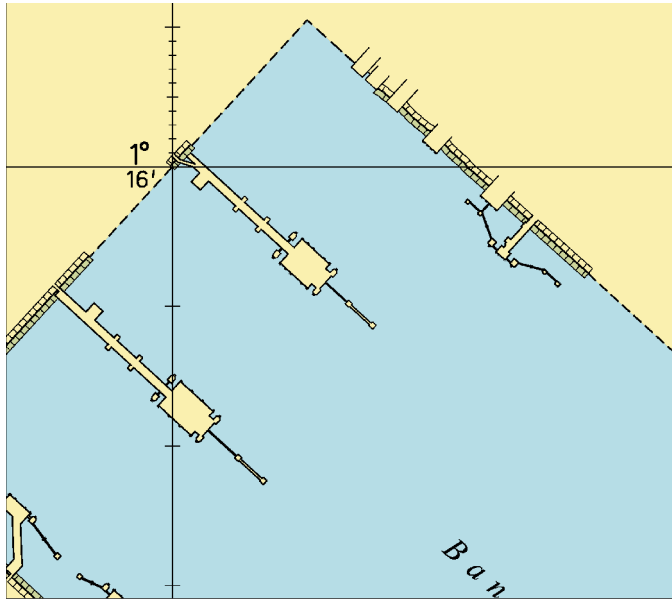
Block for Chart No 4031

To accompany Notice to Mariners 2811/13. Image Size (mm) 79.4 by 91.8



Block for Chart No 4032

To accompany Notice to Mariners 2811/13. Image Size (mm) 78.7 by 88.6



Block for Chart No 4033

## MPA ENC DISTRIBUTORS

ENC DISTRIBUTOR	ADDRESS	TELEPHONE/FAX NO./EMAIL/WEBSITE
ChartWorld GmbH  ChartWorld Asia Pacific Pte Ltd.	Atlantic Haus, Zirkusweg 1 D-20359 Hamburg Germany  Frontech Centre 07-01, 15 Jalan Kilang Barat, Singapore 159357	Tel. No.: +49 40 853 58 6942 Fax No.: +49 40 853 58 6949 Email: <a href="mailto:sales@chartworld.com">sales@chartworld.com</a>  Tel No.: +65 6513 3500  Website : <a href="http://www.chartworld.com">http://www.chartworld.com</a> <a href="http://www.ecdis-as-a-service.com">http://www.ecdis-as-a-service.com</a>
DPM (Singapore) Pte Ltd	2 Boon Leat Terrace, #05-02/03 Harbourside 2, Singapore 119844	Tel. No.: +65 6270 4060 Fax No.: +65 6276 3858 Email: <a href="mailto:sales@dpmsingapore.com.sg">sales@dpmsingapore.com.sg</a> Website: <a href="http://www.dpmsingapore.com.sg">http://www.dpmsingapore.com.sg</a>
Maritime Information Systems (MARIS)  Maritime Information Systems AS (MARIS)	52, Telok Blangah Road #01-06, Telok Blangah House, Singapore 058809  Danholmen 25, 3128 Notteroy, Norway	Tel. No.: +65 6276 1472 Fax No.: +65 6276 1473 Email: : <a href="mailto:support@maris.sg">support@maris.sg</a> Website: <a href="http://www.maris.no">http://www.maris.no</a>  Tel. No.: +47 33 30 42 50 Fax No.: +47 33 30 42 51 Email: : <a href="mailto:sales@maris.no">sales@maris.no</a> Website: <a href="http://www.maris.no">http://www.maris.no</a>
Motion Smith	15 Jalan Kilang Barat #08-01/05 Frontech Centre, Singapore 159357	Tel. No.: +65 6220 5098 Fax No.: +65 6225 4902 Email: <a href="mailto:sales@motsmith.com">sales@motsmith.com</a> Website: <a href="http://www.motsmith.com">http://www.motsmith.com</a>
Transas Marine Pacific Pte Ltd	Cyber Centre 16/18 Jalan Kilang Barat Off Jalan Bukit Merah Singapore 159358	Tel. No.: +65 6271 0200 Fax No.: +65 6271 7300 Email: <a href="mailto:navigation.asia@transas.com">navigation.asia@transas.com</a> Website: <a href="http://www.transas.com">http://www.transas.com</a>
Japan Hydrographic Association (Electronic Charts Division)	Daiichi Sogo Bldg, 6F 1-6-6, Hanedakuko, Ota-ku Tokyo 144-0041, Japan	Tel. No.: +81 3 5708 7093 Fax No.: +81 3 5708 7094 Email: <a href="mailto:shimizu-6ki@jha.jp">shimizu-6ki@jha.jp</a> Website: <a href="http://www.jha.or.jp/en/jha/">http://www.jha.or.jp/en/jha/</a>
Jeppesen Norway AS	P.O Box 212 , N-4371 Egersund, Norway	Tel No.: +47 51 46 4700 Fax No.: +47 51 46 4701 Email: <a href="mailto:license.marine@jeppesen.com">license.marine@jeppesen.com</a> Website : <a href="http://www.jeppesen.com/marine">http://www.jeppesen.com/marine</a>
PRIMAR STAVANGER	Lervigsveien 36, P.O Box 60, N-4001 Stavanger, Norway	Tel. No.: +47 51 93 9500 Fax No.: +47 51 93 9501 Email: <a href="mailto:sales@ecc.no">sales@ecc.no</a> Website : <a href="http://www.primar.no">http://www.primar.no</a>
The United Kingdom Hydrographic Office	Admiralty Way, Taunton, Somerset, TA1 2DN United Kingdom	Tel. No.: +44 1823 33 7900 Fax No.: +44 1823 28 4077 Emails: <a href="mailto:ENC.SalesReports@ukho.gov.uk">ENC.SalesReports@ukho.gov.uk</a> Website: <a href="http://www.ukho.gov.uk">http://www.ukho.gov.uk</a>

**Chart Agents for the Maritime and Port Authority of Singapore**  
**Nautical Charts and Publications**

Please approach any of the appointed chart agents to purchase the Singapore Nautical Charts and Publications.

<b>CHART AGENT</b>	<b>ADDRESS</b>	<b>TELEPHONE/FAX NO./EMAIL/WEBSITE</b>
Cornes (Singapore) Pte Ltd	10 Anson Road #23-06/6A International Plaza Singapore 079903	Tel. No.: +65 6223 8320 Fax No.: +65 6223 8321 Email: sales9850@cspl.sg Website: <a href="http://www.cornes-charts.com">http://www.cornes-charts.com</a>
DPM (Singapore) Pte Ltd	2 Boon Leat Terrace, #05-02/03 Harbourside 2, Singapore 119844	Tel. No.: +65 6270 4060 Fax No.: +65 6276 3858 Email: sales@dpmsingapore.com.sg Website: <a href="http://www.dpmsingapore.com.sg">http://www.dpmsingapore.com.sg</a>
E.W. Liner Charts & Publications Pte Ltd	102F, Pasir Panjang Road, #08-01, Citilink Warehouse Complex, Singapore 118530	Tel. No.: +65 6323 0773 Fax No.: +65 6323 0775 Email: ewliner@singnet.com.sg Website: <a href="http://www.ewliner.com">http://www.ewliner.com</a>
Kelvin Hughes (Singapore) Pte Ltd	896 Dunearn Road #03-05 Sime Darby Centre Singapore 589472	Tel. No.: +65 6545 9880 Fax No.: +65 6545 8892 Email: leslie.khoo@kelvinhughes.com.sg Website: <a href="http://www.kelvinhughes.com">http://www.kelvinhughes.com</a>
Motion Smith	15 Jalan Kilang Barat #08-01/05 Frontech Centre Singapore 159357	Tel. No.: +65 6220 5098 (After office hours:+65 8163 9993) Fax No.: +65 6225 4902 Email: sales@motsmith.com Website: <a href="http://www.motsmith.com">http://www.motsmith.com</a>

## HYDROGRAPHIC NOTE - Instructions

1. Mariners are requested to notify the Chief Hydrographer, Maritime and Port Authority of Singapore, when new or suspected dangers to navigation are discovered, changes are observed in aids to navigation or where corrections to nautical publications may be necessary. Reports, which cannot be confirmed or are lacking in certain details should not be withheld.
2. Any ambiguities of time, positioning and depth should be stressed and any firm expectation of being able to check the information provided on a following voyage should be mentioned.
3. Mariners using satellite position fixing systems, eg. GPS, should provide details of equipment and datum used (where applicable). Where bearings (true or magnetic) are taken visually or by radar to fix a position, it should include more than two objects in order to provide a check on its accuracy. A position may also be defined by bearing and distance from a conspicuous object eg. beacon, lighthouse etc.
4. The note should include a tracing or a digital image of the chart used and the details should be clearly marked.
5. Echo sounders frequently register greater depths than the advertised maximum depth for the equipment, eg. a trace appearing at 50 metres may be in fact be 550 metres or even 1050 metres for equipment whose maximum depth is 500 metres. Erroneous depths caused by 2nd transmission error can usually be recognised by the following:
  - (a) the tracing being weaker than normal for the depth registered,
  - (b) the trace appearing to pass through the transmission line,
  - (c) the feathery nature of the trace.
6. Upon receipt of a hydrographic note, a Notice to Mariners may be issued. The sender's vessel or name is quoted as the source unless the same information is also received in foreign Notices to Mariners.
7. Reports of shoals, uncharted dangers and defects in aids to navigation may also be made to the appropriate Singapore Port Operations Control Centre on VHF Channels 10, 12, 14, 68 or 73.

## HYDROGRAPHIC NOTE

To:

Chief Hydrographer  
Maritime and Port Authority of Singapore  
460 Alexandra Road PSA Building #20-00  
Singapore 119963

Tel : (65) 6375 1227  
Fax : (65) 6278 7646  
Email : [hydrographic@mpa.gov.sg](mailto:hydrographic@mpa.gov.sg)

### **Sender's Contact Details** :

Date : .....

Name of Vessel : .....

Address of Sender : .....

Tel : ..... Fax : .....

Email : .....

### **Nature of Observation** :

General Location : .....

Subject : .....

Position : Lat. .... Long. ....

Charts Used : .....

Date & Time of Observation : .....

Details : .....

.....

.....

Attachment : .....

### **Equipment Used** :

Type of Position Fixing : ..... GPS / DGPS ..... Others : .....

Type of Echo Sounder : .....

Name and Signature : .....

Ship's/Company's Stamp : .....