



SINGAPOREAN NOTICES TO MARINERS

| SECTION | CONTENT | Page |
|---------|---|------|
| I | Index of Charts & Publications | 1 |
| II | New Publications | 9 |
| | Notices to Mariners and Chart Corrections | 14 |
| | Temporary and Preliminary Notices | 16 |
| III | Navigational Information | 17 |
| | Amendments to Publications | 18 |
| IV | Reprint of Radio Navigational Warnings | 21 |
| V | Extract of Admiralty Notices to Mariners for Dual-Badged Charts | 22 |

The monthly Notices to Mariners contain corrective information affecting charts published by the Hydrographic Department, Maritime and Port Authority of Singapore. The information contained in these Notices should be updated on the charts affected. Notices under Section II apply only to the particular Singaporean Chart(s) indicated.

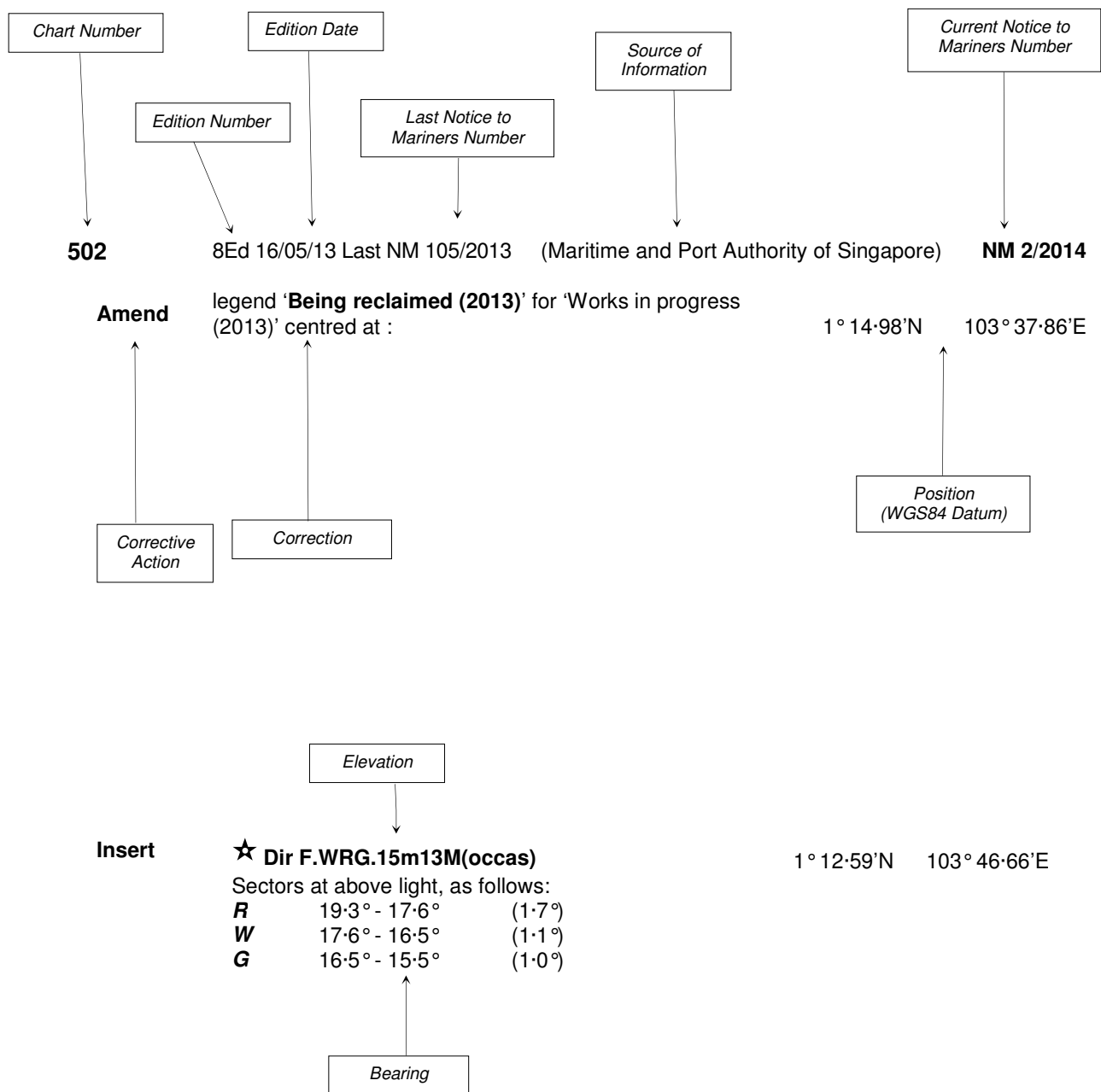
Mariners are requested to notify the Chief Hydrographer, Maritime and Port Authority of Singapore, immediately on the discovery of new dangers or suspected dangers to navigation and of changes or defects in aids to navigation. See Hydrographic Note on back page.

The monthly Singaporean Notices to Mariners can be accessed directly from the MPA website:
[http://www.mpa.gov.sg/sites/port_and_shipping/circulars_and_notices/singapore_notices_to_mariners\(ntm\).page](http://www.mpa.gov.sg/sites/port_and_shipping/circulars_and_notices/singapore_notices_to_mariners(ntm).page)

Hydrographic Department
Maritime and Port Authority of Singapore
460 Alexandra Road
#20-00 PSA Building
Singapore 119963
Tel: (65) 6375 1227
Fax: (65) 6278 7646
Email: hydrographic@mpa.gov.sg

EXPLANATION OF FORMAT

The elements of a typical chart correction are explained below.



Notes:

- a) Notice to Mariners number followed by:
 - T** indicates a Temporary Notice (eg. **NM 3T/2014**).
 - P** indicates a Preliminary Notice (eg. **NM 4P/2014**).
- b) Bearings are true reckoned clockwise from 000° to 359°; those relating to lights are from seaward.
- c) Heights and elevations are above Mean High Water Springs.

I
INDEX OF CHARTS AND PUBLICATIONS

INDEX OF AFFECTED CHARTS

| DESCRIPTION | NOTICE NO. | PAGE NO. |
|--|------------|----------|
| Index of Singaporean Charts | - | 3, 4 |
| Index of Dual-Badged Charts | - | 5 to 7 |
| Index of Singapore Electronic Navigational Chart (ENC) | - | 8 |
| New Edition Dual-Badged Charts | - | 9 to 11 |
| New Release Electronic Navigational Charts | | 12 , 13 |
| Numerical index to Notices to Mariners of 2014 | *51 | 14 |
| Singaporean Chart GSP1/SP1 | *52, *53 | 15 |
| Singaporean Chart 201 | 54 | 15 |
| Temporary and Preliminary Notices | *55T | 16 |
| Singapore Port Marine Notices | *56 | 17 |
| Singaporean Print-On-Demand (POD) Charts | *57 | 17 |
| Amendments to Publications | *58 | 18 to 20 |
| Reprint of Radio Navigational Warnings | - | 21 |
| Extract of Admiralty Notices to Mariners for Dual-Badged Charts | - | 22 to 24 |
| Singapore Electronic Navigational Chart (ENC) Distributors | - | 25 |
| Chart Agents for the Maritime and Port Authority of Singapore Nautical Charts and Publications | - | 26 |

*Source: Maritime and Port Authority of Singapore

I
INDEX OF CHARTS AND PUBLICATIONS

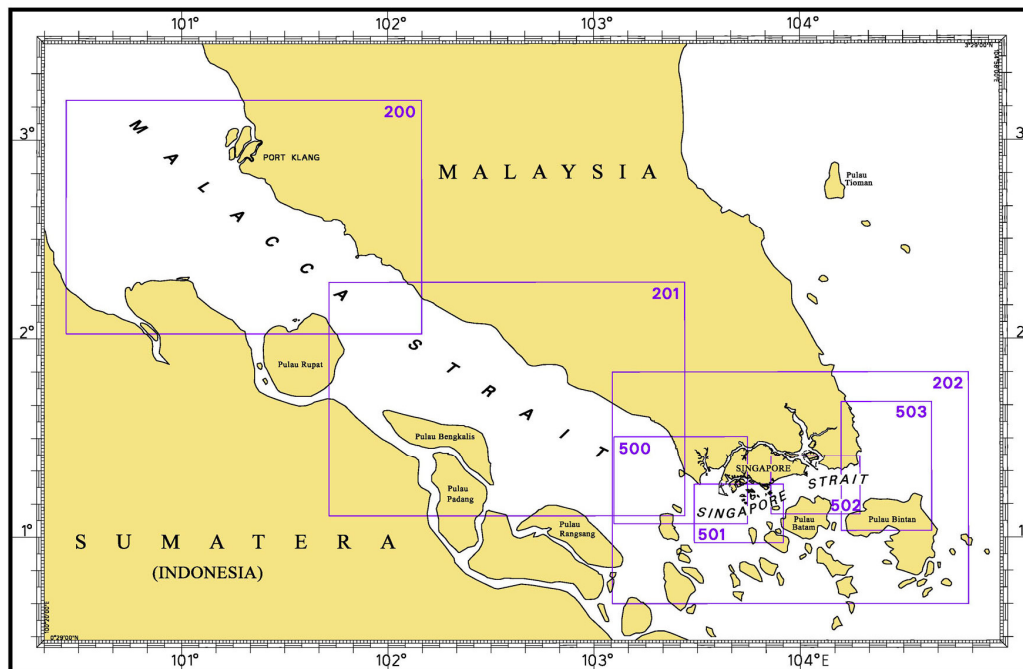
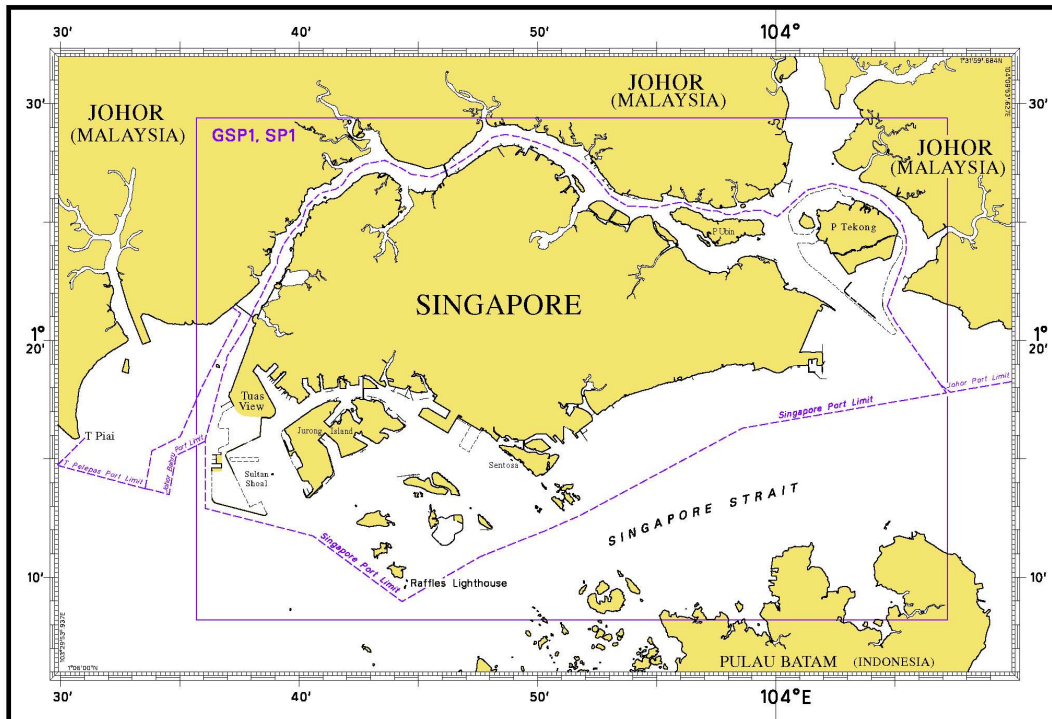
INDEX OF NOTICES

| NOTICE NO. | DESCRIPTION | PAGE NO. |
|------------|--|----------|
| - | Index of Singaporean Charts | 3, 4 |
| - | Index of Dual-Badged Charts | 5 to 7 |
| - | Index of Singapore Electronic Navigational Chart (ENC) | 8 |
| - | New Edition Dual-Badged Charts | 9 to 11 |
| - | New Release Electronic Navigational Charts | 12, 13 |
| *51 | Numerical index to Notices to Mariners of 2014 | 14 |
| *52, *53 | Singaporean Chart GSP1/SP1 | 15 |
| 54 | Singaporean Chart 201 | 15 |
| *55T | Temporary and Preliminary Notices | 16 |
| *56 | Singapore Port Marine Notices | 17 |
| *57 | Singaporean Print-On-Demand (POD) Charts | 17 |
| *58 | Amendments to Publications | 18 to 20 |
| - | Reprint of Radio Navigational Warnings | 21 |
| - | Extract of Admiralty Notices to Mariners for Dual-Badged Charts | 22 to 24 |
| - | Singapore Electronic Navigational Chart (ENC) Distributors | 25 |
| - | Chart Agents for the Maritime and Port Authority of Singapore Nautical Charts and Publications | 26 |

* Source: Maritime and Port Authority of Singapore

I INDEX OF CHARTS AND PUBLICATIONS

INDEX OF SINGAPOREAN CHARTS



Notes:
Updated Singaporean Charts are available through our Print-On-Demand (POD) Chart Service. For more information, refer to Section III – Navigational Information. These charts can be purchased from our authorised Chart Agents.

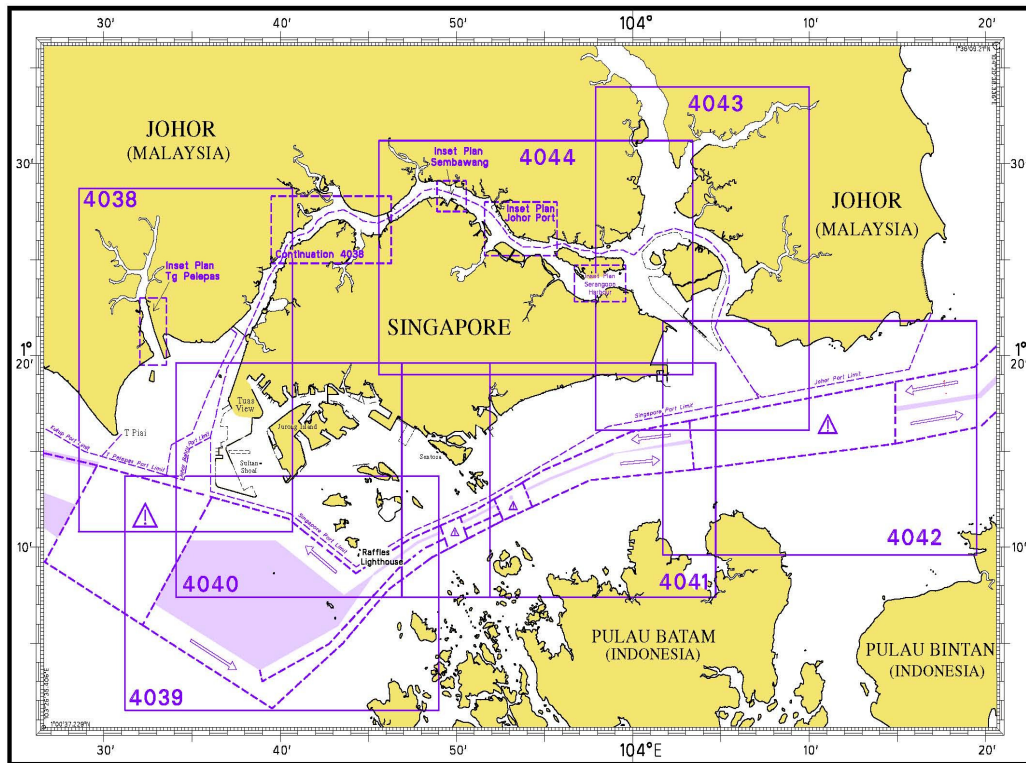
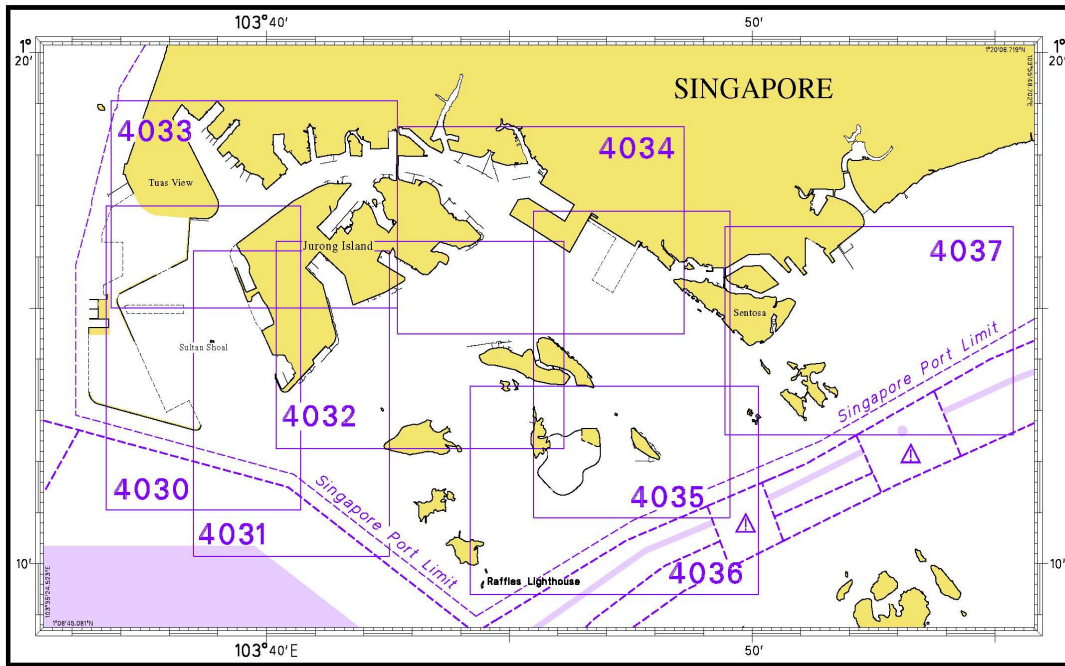
I
INDEX OF CHARTS AND PUBLICATIONS

SINGAPOREAN CHARTS

| Chart No. | Chart Title | Scale 1: | Date Published of Latest Edition |
|-----------|--|-------------------|----------------------------------|
| GSP1 | Anchorage and Aids to Navigation (with Area Reference) | 60 000 | 15/04/2014 |
| SP1 | Anchorage and Aids to Navigation | 60 000 | 15/04/2014 |
| 200 | Malacca Strait - Port Klang to Tanjung Keling | 200 000 | 22/09/2011 |
| 201 | Malacca Strait - Tanjung Keling to Western Entrance of Singapore Strait | 200 000 | 07/10/2010 |
| 202 | Singapore Strait | 200 000 | 26/09/2013 |
| 500 | Malacca and Singapore Straits – Pulau Pisang to Raffles Lighthouse | 75 000 | 26/09/2013 |
| 501 | Singapore Strait – Western Part | 50 000 | 03/05/2012 |
| 502 | Singapore Strait - Eastern Part | 50 000 | 03/05/2012 |
| 503 | South China Sea - Eastern Approaches and Entrance to Singapore Strait | 75 000 | 01/04/2010 |
| - | Charts for Small Craft – Singapore Strait & Adjacent Waterways | 10 000 to 200 000 | 02/01/2014 |
| - | Symbols Abbreviations Terms and S-57 Objects used on Singapore Nautical and Electronic Navigational Charts. Available at MPA website http://www.mpa.gov.sg/sites/global_navigation/publications/chart1.page | - | 28/07/2011 |

I INDEX OF CHARTS AND PUBLICATIONS

INDEX OF DUAL-BADGED CHARTS



I
INDEX OF CHARTS AND PUBLICATIONS

DUAL- BADGED CHARTS

| Chart No. | Chart Title | Scale 1: | Date Published of Latest Edition |
|------------------|---|-----------------|---|
| 4030 | Port of Singapore West Jurong Anchorages and Temasek Fairway | 10 000 | 15/05/2014 |
| 4031 | Port of Singapore Western Approaches to Jurong Island | 10 000 | 15/05/2014 |
| 4032 | Port of Singapore Sinki Fairway | 10 000 | 15/05/2014 |
| 4033 | Port of Singapore Tuas Bay, West Jurong Channel and Pesek Basin | 10 000 | 15/05/2014 |
| 4034 | Port of Singapore East Jurong Channel, Pasir Panjang Terminal and West Keppel Fairway | 10 000 | 11/04/2013 |
| 4035 | Port of Singapore Western Anchorages, Jong Fairway and Cruise Bay | 10 000 | 26/09/2013 |
| 4036 | Port of Singapore Raffles Lighthouse to The Sisters | 10 000 | 25/04/2013 |
| 4037 | Port of Singapore Keppel Harbour, Tanjong Pagar Terminal and Approaches | 10 000 | 25/04/2013 |
| 4038 | Malaysia and Singapore Johor Strait – Western Part | 30 000 | 26/09/2013 |
| 4039 | Indonesia, Singapore and Malaysia Western Approaches to Main Strait | 30 000 | 24/04/2014 |
| 4040 | Singapore, Indonesia and Malaysia, Tuas View to Pulau Sakijang Bendera (S. John's Island) | 30 000 | 09/05/2013 |
| 4041 | Singapore and Indonesia, Pulau Sebarok to Changi | 30 000 | 09/05/2013 |

I
INDEX OF CHARTS AND PUBLICATIONS

DUAL- BADGED CHARTS

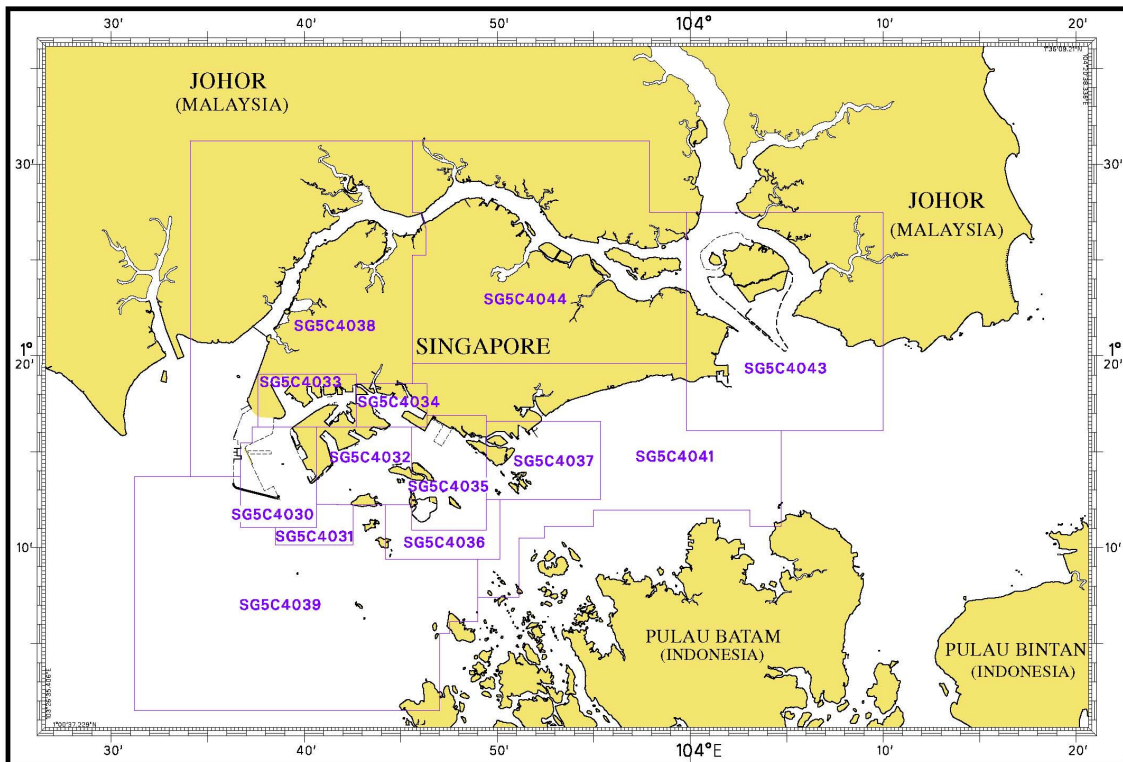
| Chart No. | Chart Title | Scale 1: | Date Published of Latest Edition |
|------------------|---|-----------------|---|
| 4042 | Indonesia, Malaysia and Singapore, Changi to Pulau Mungging and Tanjung Buntan to Tanjung Tondang | 30 000 | 24/04/2014 |
| 4043 | Malaysia and Singapore Kuala Johor and Sungai Johor | 30 000 | 29/08/2013 |
| 4044 | Singapore and Malaysia Johor Strait - Eastern Part | 30 000 | 29/08/2013 |

SINGAPOREAN PUBLICATIONS

| Item | Title |
|-------------|--------------------------------------|
| 1 | Singapore Tide Tables Year 2014 |
| 2 | Singapore Port Information 2014/2015 |

I INDEX OF CHARTS AND PUBLICATIONS

INDEX OF SINGAPORE ELECTRONIC NAVIGATIONAL CHART (ENC)



SINGAPORE ELECTRONIC NAVIGATIONAL CHART (ENC)

| ENC Name | ENC Coverage | ENC Edition |
|----------|---|---------------------------------------|
| SG5C4030 | West Jurong Anchorages and Temasek Fairway | 6 th Edition (15/05/2014) |
| SG5C4031 | Western Approaches to Jurong Island | 6 th Edition (15/05/2014) |
| SG5C4032 | Sinki Fairway | 8 th Edition (15/05/2014) |
| SG5C4033 | Tuas Bay, West Jurong Channel and Pesek Basin | 6 th Edition (15/05/2014) |
| SG5C4034 | East Jurong Channel, Pasir Panjang Terminal and West Keppel Fairway | 11 th Edition (11/04/2013) |
| SG5C4035 | Western Anchorages, Jong Fairway and Cruise Bay | 14 th Edition (26/09/2013) |
| SG5C4036 | Raffles Lighthouse to The Sisters | 6 th Edition (3/05/2012) |
| SG5C4037 | Keppel Harbour, Tanjong Pagar Terminal and Approaches | 7 th Edition (25/04/2013) |
| SG5C4038 | Johor Strait – Western Part | 6 th Edition (26/09/2013) |
| SG5C4039 | Western Approaches to Main Strait | 6 th Edition (24/04/2014) |
| SG5C4041 | Pulau Sebarok to Changi | 7 th Edition (9/05/2013) |
| SG5C4043 | Kuala Johor and Sungai Johor | 9 th Edition (29/08/2013) |
| SG5C4044 | Johor Strait – Eastern Part | 9 th Edition (29/08/2013) |

II NEW PUBLICATIONS

NEW EDITION DUAL- BADGED CHARTS TO BE PUBLISHED ON 14TH AUGUST 2014

Chart Number : 4040
Title : Singapore, Indonesia and Malaysia
 Tuas View to Pulau Sakijang Bendera
 (S. John's Island)
Coverage : Lat 01° 07'·40 N 01° 19'·60 N
 Long 103° 34'·10 E 103° 51'·90 E
Scale : 1: 30 000
Date Published : 14th August 2014
Size of Chart : 1100·6 x 749·5 mm
Descriptions : This new edition includes changes to depths and topographic details from the latest surveys covering west of Tuas Reclamation, Jurong Anchorages, Temasek Fairway, West Jurong Channel, Pesek Basin, Banyan Basin, Sinki Fairway, East Jurong Channel, West Keppel Fairway, Shell SBM Area, Monggok Sebarok and East Keppel Fairway.

The existing chart of the same number published on 9th May 2013 will be superseded.

Chart Number : 4041
Title : Singapore and Indonesia
 Pulau Sebarok to Changi
Coverage : Lat 01° 07'·40 N 01° 19'·60 N
 Long 103° 46'·90 E 104° 04'·70 E
Scale : 1: 30 000
Date Published : 14th August 2014
Size of Chart : 1100·6 x 749·5 mm
Descriptions : This new edition includes changes to depths and topographic details from the latest surveys covering Eastern Cable Corridor, approaches to Marina South, approaches to East Keppel Fairway, Keppel Harbour, S. John Dumping Ground, west of Sentosa, West Keppel Fairway and Shell SBM.

The existing chart of the same number published on 9th May 2013 will be superseded.

II NEW PUBLICATIONS

NEW EDITION DUAL- BADGED CHARTS TO BE PUBLISHED ON 14TH AUGUST 2014

Chart Number : 4043
Title : Malaysia and Singapore
 Kuala Johor and Sungai Johor
Coverage : Lat 01° 16' 10 N 01° 34' 00 N
 Long 103° 57' 90 E 104° 10' 00 E
Scale : 1: 30 000
Date Published : 14th August 2014
Size of Chart : 748·1 x 1099·6 mm
Descriptions : This new edition includes changes to depths and topographic details from the latest surveys covering north of Pulau Ubin, around Pulau Tekong, Kuala Johor, Cable Corridor and Eastern Anchorages and Fairway.

The existing chart of the same number published on 29th August 2013 will be superseded.

Chart Number : 4044
Title : Malaysia and Singapore
 Johor Strait, Eastern Part
Coverage : Lat 01° 19' 00 N 01° 31' 20 N
 Long 103° 45' 60 E 104° 03' 40 E
Scale : 1: 30 000
Date Published : 14th August 2014
Size of Chart : 1100·5 x 749·5 mm
Descriptions : This new edition includes changes to depths and topographic details from the latest surveys covering Approaches to Sembawang Shipyard, north-west of Pulau Ubin, north of Pulau Tekong and Kuala Johor.

The existing chart of the same number published on 29th August 2013 will be superseded.

II NEW PUBLICATIONS

NEW EDITION DUAL- BADGED CHARTS TO BE PUBLISHED ON 28TH AUGUST 2014

Chart Number : 4034
Title : Port of Singapore
 East Jurong Channel, Pasir Panjang Terminal and West Keppel Fairway
Coverage : Lat 01° 14' 50 N 01° 18' 55 N
 Long 103° 42' 70 E 103° 48' 60 E
Scale : 1: 10 000
Date Published : 28th August 2014
Size of Chart : 1094.3 x 746.3 mm
Descriptions : This new edition includes changes to depths and topographic details from the latest surveys covering Pasir Panjang Terminal, East Jurong Channel, West Keppel Fairway, Sinki Fairway, Selat Pandan and newly commissioned berths P31 to P33 at Pasir Panjang Terminal.

The existing chart of the same number published on 11th April 2013 will be superseded.

Chart Number : 4035
Title : Port of Singapore
 Western Anchorages, Jong Fairway and Cruise Bay
Coverage : Lat 01° 10' 90 N 01° 16' 90 N
 Long 103° 45' 50 E 103° 49' 54 E
Scale : 1: 10 000
Date Published : 28th August 2014
Size of Chart : 749.4 x 1105.7 mm
Descriptions : This new edition includes changes to depths and topographic details from the latest surveys covering Pasir Panjang Terminal, West Keppel Fairway, west of Sentosa, north of Pulau Bukom, west of Pulau Sebarok, Shell SBM, Terumbu Sebarok and newly commissioned berths P31 to P33 at Pasir Panjang Terminal.

The existing chart of the same number published on 26th September 2013 will be superseded.

II NEW PUBLICATIONS

NEW EDITION ENC TO BE RELEASED ON 14TH AUGUST 2014

ENC Name : SG5C4041
Location : Pulau Sebarok to Changi
Coverage : Lat 01° 07' 40 N 01° 10' 60 N
 Long 103° 45' 60 E 104° 04' 70 E
Compilation Scale : 1: 22 000
Date Released : 14th August 2014
Descriptions : This new edition includes changes to depths, topographic details, aids to navigation and submarine cables covering the eastern part of Singapore.

The existing cell of the same name released on 9th May 2013 will be superseded.

ENC Name : SG5C4043
Location : Kuala Johor and Sungai Johor
Coverage : Lat 01° 16' 10 N 01° 27' 50 N
 Long 103° 59' 80 E 104° 10' 00 E
Compilation Scale : 1: 22 000
Date Released : 14th August 2014
Descriptions : This new edition includes changes to depths, aids to navigation and submarine cables around Pulau Tekong, Kuala Johor and the Eastern Anchorages and fairway.

The existing cell of the same name released on 29th August 2013 will be superseded.

ENC Name : SG5C4044
Location : Johor Strait – Eastern Part
Coverage : Lat 01° 19' 60 N 01° 31' 20 N
 Long 103° 45' 60 E 103° 59' 80 E
Compilation Scale : 1: 22 000
Date Released : 14th August 2014
Descriptions : This new edition includes changes to depths, topographic details and aids to navigation in the approaches to Sembawang Shipyard, Punggol, Serangoon Harbour and Kuala Johor.

The existing cell of the same name released on 29th August 2013 will be superseded.

II NEW PUBLICATIONS

NEW EDITION ENC TO BE RELEASED ON 28TH AUGUST 2014

ENC Name : SG5C4034
Location : East Jurong Channel, Pasir Panjang Terminal and West Keppel Fairway
Coverage : Lat 01° 16' 300 N 01° 18' 550 N
 Long 103° 42' 700 E 103° 46' 356 E
Compilation Scale : 1: 8 000
Date Released : 28th August 2014
Descriptions : This new edition includes changes to depths and topographic details covering East Jurong Channel and northwest of Pasir Panjang Terminal.

The existing cell of the same name released on 11th April 2013 will be superseded.

ENC Name : SG5C4035
Location : Western Anchorages, Jong Fairway and Cruise Bay
Coverage : Lat 01° 10' 900 N 01° 16' 900 N
 Long 103° 45' 580 E 103° 49' 425 E
Compilation Scale : 1: 8 000
Date Released : 28th August 2014
Descriptions : This new edition includes changes to depths and topographic covering West Keppel Fairway, Jong Fairway and Western Anchorages.

The existing cell of the same name released on 26th September 2013 will be superseded.






II
NOTICES TO MARINERS AND CHART CORRECTIONS


(NM 51/2014) NUMERICAL INDEX TO SINGAPOREAN NOTICES TO MARINERS OF 2014 (1 TO 50)

| MONTH | SINGAPOREAN NOTICES TO MARINERS NO. |
|----------------------|--|
| JANUARY 2014 | 1 to 6 |
| FEBRUARY 2014 | 7 to 16 |
| MARCH 2014 | 17 to 25 |
| APRIL 2014 | 26 to 33 |
| MAY 2014 | 34 to 43 |
| JUNE 2014 | 44 to 50 |

| CHART NO. | PUBLISHED | YEAR | SINGAPOREAN NOTICES TO MARINERS NO. |
|------------------|------------------|-------------|--|
| GSP1, SP1 | 9 Ed 15/04/14 | 2014 | 7-8-9-10-17-26-27-28-29-34-35-36-37-38-39-44 |
| 200 | 3 Ed 22/09/11 | 2014 | 2-11-45 |
| 201 | 4 Ed 7/10/10 | 2014 | - |
| 202 | 7 Ed 26/09/13 | 2014 | 9-12-18-29-39-40 |
| 500 | 7 Ed 26/09/13 | 2014 | 3-39 |
| 501 | 6 Ed 3/05/12 | 2014 | 3-7-9-26-28-39 |
| 502 | 6 Ed 3/05/12 | 2014 | 7-29-30-37-40 |
| 503 | 4 Ed 1/04/10 | 2014 | 12-29-40 |

II
NOTICES TO MARINERS AND CHART CORRECTIONS

| | | | |
|-----------------|---|---|-------------------------|
| GSP1/SP1 | 9 Ed 15/4/14 Last NM 44/2014 | (Maritime and Port Authority Singapore) | NM 52/2014 |
| Insert | legend along the adjacent coast ' <i>Numerous lighted mooring buoys</i> ' centred at: | | 1° 25·48'N 103° 53·65'E |
| Delete |  <i>Fl.Y.6s B1</i> | | 1° 25·36'N 103° 53·84'E |
| |  <i>Fl.Y.4s B2</i> | | 1° 25·43'N 103° 53·72'E |
| |  <i>Fl.Y.2s B3</i> | | 1° 25·50'N 103° 53·60'E |
| |  <i>Fl.Y.4s B4</i> | | 1° 25·54'N 103° 53·47'E |
| Amend | light to <i>Fl.Y.8s</i> | | 1° 17·50'N 103° 37·03'E |
| | | (Maritime and Port Authority Singapore) | NM 53/2014 |
| Delete |  <i>Fl.Y.2,5s</i> | | 1° 17·01'N 103° 53·00'E |

| | | | |
|---------------|--|---|-------------------------|
| 201 | 4 Ed 7/10/10 Last NM 107/2013 | (Royal Malaysian Navy Notice No. 5/82/2014) | NM 54/2014 |
| Insert |  <i>Obstn</i> | | 2° 10·35'N 102° 12·14'E |

II
TEMPORARY AND PRELIMINARY NOTICES

***(NM 55T/2014) Semaphore Tower at Pulau Satumu – Raffles Lighthouse**

The day mark signal (an upright black cone over a black drum) and night mark signal (an isophase white 'X' every 10 sec) warning passing vessels of a VLCC crossing the Main Strait and bound for Shell Single Buoy Mooring (SBM) in position Latitude 1°09.65' N Longitude 103°44.47' E are out of service.

Remark : Vessels in the vicinity of Raffles Lighthouse are advised to navigate with caution.

Charts affected : GSP1/SP1, 202, 500, 501, 4036, 4039 and 4040.

Publication affected: Singapore Port Information 2014/2015.

*Source: Maritime and Port Authority of Singapore

III NAVIGATIONAL INFORMATION

***(NM 56/2014) SINGAPORE PORT MARINE NOTICES**

The Port Marine Notices shortlisted below would be of particular interest to mariners. Details and complete list of Port Marine Notices are available at this link:

http://www.mpa.gov.sg/sites/port_and_shipping/circulars_and_notices/port_marine_notices.page

| PMN No. | Subject |
|----------------|---|
| 75/2014 | Reclamation work off Temasek Fairway, West of Jurong Island. |
| 76/2014 | Mooring and unmooring of vessels at mooring buoys West of Jurong Island, off Temasek Fairway. |
| 78/2014 | Reclamation at Pasir Panjang Terminal and Pasir Panjang Wharves. |
| 79/2014 | Mooring and unmooring of vessels at mooring buoys at Tuas View, off Temasek Fairway. |
| 84/2014 | Mooring and unmooring of vessels at mooring buoys at Banyan Basin, Jurong Island. |
| 85/2014 | Dredging work in Temasek Fairway. |

***(NM 57/2014) SINGAPOREAN PRINT-ON-DEMAND (POD) CHARTS**

Print-On-Demand (POD) Charts are the most up-to-date paper nautical charts printed for navigational use. These nautical charts are produced in accordance with the International Hydrographic Organisation (IHO) chart specifications. These official nautical charts are continually updated to the latest Notices to Mariners before they are printed and sold to users.

These POD Charts include 200, 201, 202, 500, 501, 502 and 503.

BENEFITS TO OUR CUSTOMERS

Convenience

Customers need not make numerous hand corrections to the nautical charts before use. In addition the updated POD Charts are more accurate and reliable than offset printed charts with hand corrections.

Clarity

Clarity in the presentation of updated information as compared to lithographic printed charts, where in some cases there are several overlapping corrections over existing information.

Coverage

The POD Charts cover the Malacca and Singapore Straits, from One Fathom Bank to Horsburgh Lighthouse.

*Source: Maritime and Port Authority of Singapore

III
AMENDMENTS TO PUBLICATIONS

*(NM 58/2014) UPDATING OF PUBLICATION "SINGAPORE PORT INFORMATION 2014/2015"

CHARACTERISTICS OF AIDS TO NAVIGATION

1. Page 138

EAST JURONG CHANNEL

Insert the following:

| Name of Beacon/Buoy | Position Lat.N Long.E Deg Min | Structure, colour & Shape | Light Characteristic | Owner |
|---------------------|--|------------------------------|-------------------------|-----------------------------|
| SPS-1 Beacon | 01°16.967' 103°43.759' | Yellow pile | Fl.Y.4s | YTL Power Seraya Pte Ltd |

2. Page 150

APPROACHES TO MARINA RESERVOIR

Delete the following:

| Name of Beacon/Buoy | Position Lat.N Long.E Deg Min | Structure, colour & Shape | Light Characteristic | Owner |
|-----------------------|--|------------------------------|-------------------------|-------|
| Marina East Buoy 1 | 01°17.006' 103°52.999' | Yellow pillar | Fl.Y.2,5s | MPA |

3. Page 154

EAST JOHOR STRAIT

Insert the following:

| Name of Beacon/Buoy | Position Lat.N Long.E Deg Min | Structure, colour & Shape | Light Characteristic | Owner |
|-------------------------|--|------------------------------|-------------------------|-------|
| BCA B1A Mooring Buoy | 01°25.320' 103°53.930' | Yellow drum | Fl.Y.2s (sync) | BCA |
| BCA B2A Mooring Buoy | 01°25.390' 103°53.810' | Yellow drum | Fl.Y.2s (sync) | BCA |
| BCA B3A Mooring Buoy | 01°25.412' 103°53.773' | Yellow drum | Fl.Y.4s (sync) | BCA |
| BCA B4A Mooring Buoy | 01°25.483' 103°53.651' | Yellow drum | Fl.Y.4s (sync) | BCA |
| BCA B5A Mooring Buoy | 01°25.550' 103°53.490' | Yellow drum | Fl.Y.6s (sync) | BCA |

*Source: Maritime and Port Authority of Singapore

III
AMENDMENTS TO PUBLICATIONS

| Name of Beacon/Buoy | Position Lat.N Long.E Deg Min | Structure, colour & Shape | Light Characteristic | Owner |
|----------------------------|--|--|---------------------------------|--------------|
| B3 Mooring Buoy | 01°25.570' 103°53.450' | Yellow drum | Fl.Y.6s (sync) | BCA |

Page 131

WEST JOHOR STRAIT

Insert the following:

| Name of Beacon/Buoy | Position Lat.N Long.E Deg Min | Structure, colour & Shape | Light Characteristic | Owner |
|-----------------------------|--|--|---------------------------------|--------------|
| BCA B7A Mooring Buoy | 01°17.490' 103°37.020' | Yellow drum | Fl.Y.8s | BCA |

4. Page 155

KUALA JOHOR APPROACHES

Amend the following:

| Name of Beacon/Buoy | Position Lat.N Long.E Deg Min | Structure, colour & Shape | Light Characteristic | Owner |
|----------------------------|--|--|---------------------------------|--|
| BCA-1 Buoy | 01°20.380' 104°02.800' | Yellow pillar with X topmark | Fl.Y.6s | Building & construction of Singapore |

5. Page 158

PULAU TEKONG

Delete the following:

| Name of Beacon/Buoy | Position Lat.N Long.E Deg Min | Structure, colour & Shape | Light Characteristic | Owner |
|----------------------------|--|--|---------------------------------|--------------|
| TK-MB1 Mooring Buoy | 01°20.273' 104°04.733' | Yellow drum | Fl.Y.2s (sync) | TOA_JDN JV |
| TK-MB2 Mooring Buoy | 01°20.394' 104°04.588' | Yellow drum | Fl.Y.2s (sync) | TOA_JDN JV |
| TK-MB3 Mooring Buoy | 01°22.146' 104°02.518' | Yellow drum | Fl.Y.4s (sync) | TOA_JDN JV |
| TK-MB4 Mooring Buoy | 01°22.269' 104°02.380' | Yellow drum | Fl.Y.4s (sync) | TOA_JDN JV |

III
AMENDMENTS TO PUBLICATIONS

6. Page 165 – Item 5

PASIR PANJANG TERMINAL (PSA SINGAPORE TERMINALS) (1°17.2'N, 103°46.1E)

Amend the following:

| Berth | Length of Berth | Depth Alongside (Year Surveyed) | Controlling Depth In Approaches |
|-------|-----------------|---------------------------------|---------------------------------|
| P25 | 160m | 16.0m (2012) | 15.7m |
| | 200m | 16.0m (2014) | 15.0m |
| P26 | 140m | 15.4m (2014) | 14.6m |

7. Page 171 – Item 20

JURONG ISLAND – JURONG ROCK CAVERNS (1°15.3'N, 103°41.2E)

Amend the following:

| Berth | Length of Berth | Depth Alongside (Year Surveyed) | Controlling Depth In Approaches |
|-------|-----------------|---------------------------------|---------------------------------|
| 1A | 327m | 15.9m (2013) | 15.8m |
| 1B | | | |
| 1C | | | |

8. Page 172 – Item 23

JURONG ISLAND (OILTANKING SINGAPORE LTD) (1°16.8'N, 103°44.1E)

Amend the following:

| Berth | Length of Berth | Depth Alongside (Year Surveyed) | Controlling Depth In Approaches |
|-------|-----------------|---------------------------------|---------------------------------|
| 1 | 140m | 14.5m (2014) | 13.3m |
| 3 | 124m | 14.3m (2014) | 13.3m |
| 9 | 350m | 15.7m (2014) | 14.9m |
| 10 | 220m | 12.1m (2014) | 12.9m |
| 11 | 270m | 14.6m (2014) | 15.0m |

9. Page 183 – Item 53

SERANGOON HARBOUR – TECHNICS OFFSHORE JETTY (1°23.2'N, 103°58.3E)

Insert the following:

| Berth | Length of Berth | Depth Alongside (Year Surveyed) | Controlling Depth In Approaches |
|-------------------------|-----------------|---------------------------------|---------------------------------|
| Technics Offshore Jetty | 150m | 6.6m (2014) | 6.3m |

IV
REPRINT OF RADIO NAVIGATIONAL WARNINGS

The following Radio Navigational Warnings have been shortlisted, as they would be of particular interest to mariners.

TT026 (AMENDED ON 16 MAR 14)

TUAS RECLAMATION WORKING AREA AT WESTERN PART OF SINGAPORE PORT ARE MARKED BY BUOYS (REF. PMN: 54/2013, 30/2014).

TT175

VESSELS IN EAST JOHOR STRAIT ARE ADVISED TO NAVIGATE WITH CAUTION WHEN NEAR THE PROJECT AREAS OFF PULAU TEKONG, CHANGI AND MALANG PAPAN AS SHALLOW WATER AREAS EXIST. VESSELS ARE ADVISED TO KEEP LOOKOUT FOR TUGS AND BARGES NAVIGATING NEAR THE PROJECT AREAS AND PASSENGER FERRIES CROSSING BETWEEN CHANGI AND PULAU TEKONG AND VICINITY OF PASIR GUDANG.

TT961

VESSELS INTENDING TO CROSS THE TRAFFIC SEPARATION SCHEME(TSS) OR PRECAUTIONARY AREAS IN THE SINGAPORE STRAIT DURING THE HOURS OF DARKNESS ARE RECOMMENDED TO DISPLAY THE NIGHT SIGNALS CONSISTING OF 3 ALL-ROUND GREEN LIGHTS IN A VERTICAL LINE WITH EFFECT FROM 1ST JULY 2011 AT 010000UTC (0800SGT) AS DETAILED IN MARITIME AND PORT AUTHORITY OF SINGAPORE'S PORT MARINE CIRCULAR, 02 OF 2011 DATED 30 MAY 2011.

ISSUED BY SINGAPORE PORT OPERATIONS CONTROL CENTRE (as at 29th June 2014)

V
**EXTRACT OF ADMIRALTY NOTICES TO MARINERS
 FOR DUAL-BADGED CHARTS**

These notices can also be accessed directly from UKHO Website:

<http://www.ukho.gov.uk/ProductsandServices/MaritimeSafety/Pages/NMPublic.aspx>

2358 SINGAPORE – Temasek Fairway – Jurong Aromatics Corporation – Dredged depth.

Source: Maritime and Port Authority of Singapore

Chart 4030 [*previous update New Edition 15/05/2014*] WGS84 DATUM

Amend dredged depth to, **17.0m (2014)**, centred on: 1° 15'·557N., 103° 39'·386E.

Chart 4031 [*previous update New Edition 15/05/2014*] WGS84 DATUM

Amend dredged depth to, **17.0m (2014)**, centred on: 1° 15'·557N., 103° 39'·386E.

Chart 4033 [*previous update New Edition 15/05/2014*] WGS84 DATUM

Amend dredged depth to, **17.0m (2014)**, centred on: 1° 15'·557N., 103° 39'·386E.

**2405 SINGAPORE – Pasir Panjang Terminal SE, Pulau Bukom SE and Raffles Reserved anchorage E –
 Buoyage. Depths. Dredged area. Beacon. Note. Berths.**

Source: Maritime and Port Authority of Singapore

Chart 4034 [*previous update 5009/13*] WGS84 DATUM

Insert the accompanying block, showing new dredged area, berths and amendments to depths, centred on: 1° 16'·120N., 103° 46'·811E.

Chart 4035 [*previous update 1308/14*] WGS84 DATUM

Insert the accompanying block A, showing new dredged area, berths and amendments to depths, centred on: 1° 16'·062N., 103° 46'·824E.
 the accompanying block B, showing amendments to note, centred on: 1° 16'·097N., 103° 48'·487E.


| | | | |
|---------|---|--|------------------------------|
| |  | <i>Fl. Y.8s EM-DHI-SMK01</i> | 1° 11'·432N., 103° 45'·675E. |
| Replace |  | with  (collapsed) | 1° 13'·390N., 103° 46'·775E. |
| Delete |  | <i>Fl(2)R.10s Terumbu</i> | 1° 11'·264N., 103° 46'·397E. |

Chart 4036 [*previous update 1308/14*] WGS84 DATUM

| | | | |
|---------|---|--|------------------------------|
| |  | <i>Fl. Y.8s EM-DHI-SMK01</i> | 1° 11'·432N., 103° 45'·675E. |
| Replace |  | with  (collapsed) | 1° 13'·390N., 103° 46'·775E. |
| Delete |  | <i>Fl(2)R.10s Terumbu</i> | 1° 11'·264N., 103° 46'·398E. |

Chart 4040 [*previous update 1488/14*] WGS84 DATUM

| | | | |
|---------|---|--|----------------------------|
| |  | <i>Fl. Y.8s EM-DHI-SMK01</i> | 1° 11'·43N., 103° 45'·68E. |
| Replace |  | with  (collapsed) | 1° 13'·39N., 103° 46'·78E. |
| Delete |  | <i>Fl(2)R.10s Terumbu</i> | 1° 11'·26N., 103° 46'·41E. |

V

**EXTRACT OF ADMIRALTY NOTICES TO MARINERS
FOR DUAL-BADGED CHARTS**

2502 SINGAPORE – Jurong Island – Sinki Fairway SW and Ayer Merbau Basin E and NE, Sentosa N, Terumbu Raya SW and Kuala Johor – Anchorage area. Dredged depths. Rock. Depths. Buoyage.
Source: Maritime and Port Authority of Singapore

Chart 4031 [previous update 2358/14] WGS84 DATUM

Insert limit of anchorage area, pecked line, joining: 1° 10′·300N., 103° 38′·500E.
(W border)
1° 10′·300N., 103° 38′·700E.
1° 10′·150N., 103° 38′·700E.
(S border)

Chart 4032 [previous update New Edition 15/05/2014] WGS84 DATUM

Amend dredged depth to, **15.1m (2014)**, centred on: 1° 16′·106N., 103° 44′·115E.
dredged depth to, **13.7m (2014)**, centred on: 1° 16′·226N., 103° 44′·346E.
dredged depth to, **15.7m (2014)**, centred on: 1° 16′·144N., 103° 44′·206E.

Chart 4034 [previous update 2405/14] WGS84 DATUM

Amend dredged depth to, **15.1m (2014)**, centred on: 1° 16′·106N., 103° 44′·115E.
dredged depth to, **13.7m (2014)**, centred on: 1° 16′·226N., 103° 44′·346E.
dredged depth to, **14.1m (2014)**, centred on: 1° 16′·762N., 103° 44′·274E.
dredged depth to, **14.0m (2014)**, centred on: 1° 16′·879N., 103° 44′·149E.
dredged depth to, **12.5m (2014)**, centred on: 1° 16′·813N., 103° 44′·147E.
dredged depth to, **12.2m (2014)**, centred on: 1° 16′·860N., 103° 44′·100E.
dredged depth to, **15.7m (2014)**, centred on: 1° 16′·144N., 103° 44′·206E.

Chart 4035 [previous update 2405/14] WGS84 DATUM

Amend dredged depth to, **12.2m (2014)**, centred on: 1° 15′·708N., 103° 49′·147E.
dredged depth to, **10.6m (2014)**, centred on: 1° 15′·739N., 103° 49′·140E.

Chart 4036 [previous update 2405/14] WGS84 DATUM

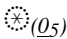
Insert  (Q5) (a) 1° 12′·585N., 103° 45′·073E.
(a) above
Delete depth, 0_2 , and associated 2m contour, close SW of:

Chart 4042 [previous update New Edition 24/04/2014] WGS84 DATUM


Delete  Fl. Y.2s(sync) TK-MB1 1° 20′·27N., 104° 04′·73E.
 Fl. Y.2s(sync) TK-MB2 1° 20′·39N., 104° 04′·59E.


Chart 4043 [previous update 1307/14] WGS84 DATUM

Delete  Fl. Y.2s(sync) TK-MB1 1° 20′·27N., 104° 04′·73E.
 Fl. Y.2s(sync) TK-MB2 1° 20′·38N., 104° 04′·58E.
 Fl. Y.4s(sync) TK-MB3 1° 22′·15N., 104° 02′·52E.
 Fl. Y.4s(sync) TK-MB4 1° 22′·27N., 104° 02′·38E.
 Fl. Y.6s(sync) TK-MB5 1° 22′·44N., 104° 02′·17E.
 Fl. Y.6s(sync) TK-MB6 1° 22′·56N., 104° 02′·03E.

V
**EXTRACT OF ADMIRALTY NOTICES TO MARINERS
 FOR DUAL-BADGED CHARTS**

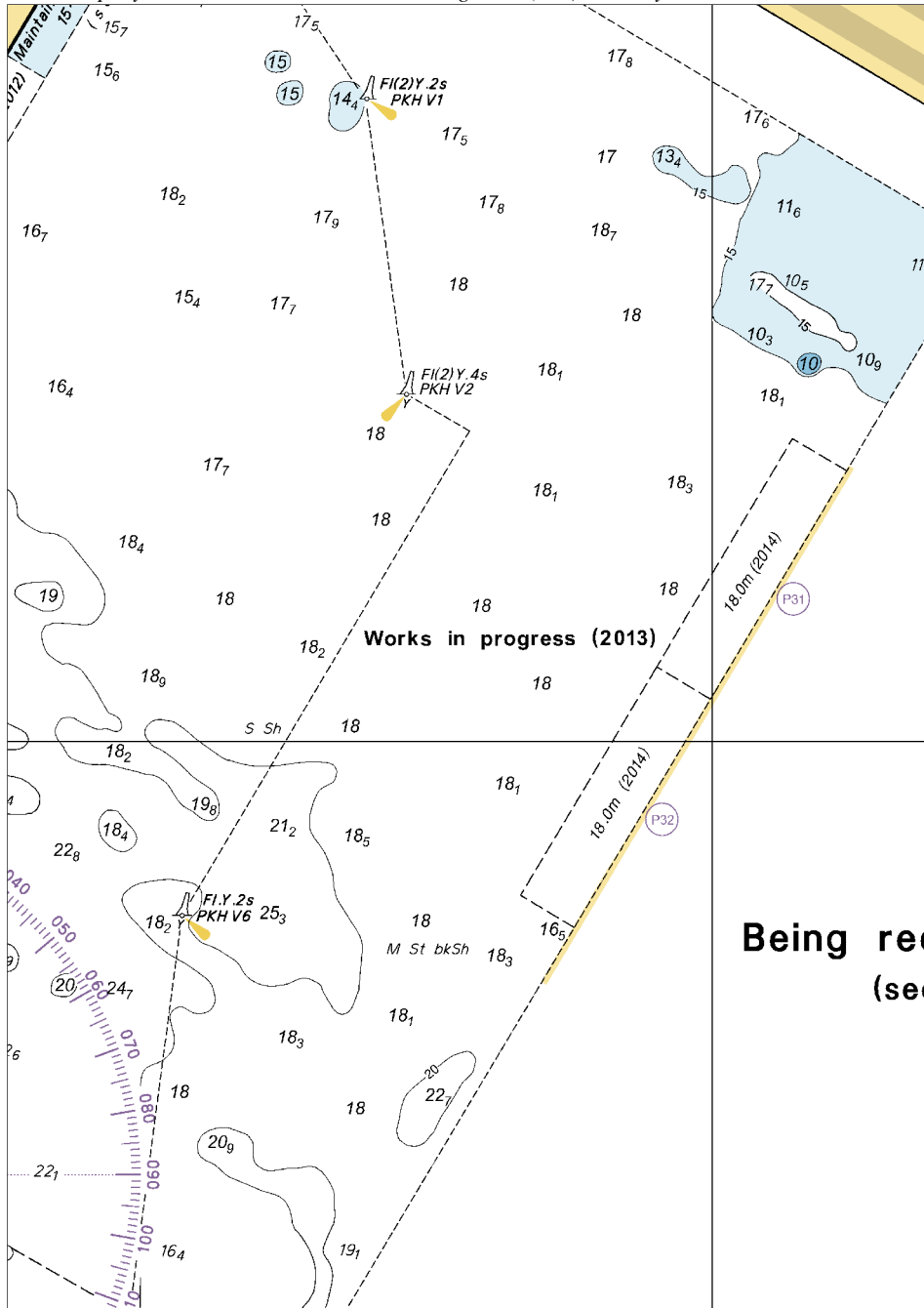
2502 SINGAPORE – Jurong Island – Sinki Fairway SW and Ayer Merbau Basin E and NE, Sentosa N, Terumbu Raya SW and Kuala Johor – Anchorage area. Dredged depths. Rock. Depths. Buoyage. (continued)

Chart 4044 [previous update 432/14] WGS84 DATUM

| | | |
|--------|--|----------------------------|
| Delete |  <i>Fl. Y.4s(sync) TK-MB3</i> | 1° 22′.15N., 104° 02′.52E. |
| |  <i>Fl. Y.4s(sync) TK-MB4</i> | 1° 22′.27N., 104° 02′.38E. |
| |  <i>Fl. Y.6s(sync) TK-MB5</i> | 1° 22′.44N., 104° 02′.17E. |
| |  <i>Fl. Y.6s(sync) TK-MB6</i> | 1° 22′.56N., 104° 02′.03E. |

Updated to Admiralty Notices to Mariners Edition No. 26 of 2014 dated 26th June 2014.

To accompany Notice to Mariners 2405/14. Image Size (mm) 176.9 by 125.4



Block A for Chart No 4035


To accompany Notice to Mariners 2405/14. Image Size (mm) 46.1 by 73.4

ALONGSIDE DEPTHS

Depths shown within dashed limits alongside berths thus:

16.5m (2013)

denote the least depth within that berthing area, as determined by the port authority.



Block B for Chart No 4035

MPA ENC DISTRIBUTORS

| ENC DISTRIBUTOR | ADDRESS | TEL/FAX /EMAIL/WEBSITE |
|---|--|--|
| ChartWorld GmbH ChartWorld Asia Pacific Pte Ltd. | Atlantic Haus, Zirkusweg 1 D-20359 Hamburg Germany Frontech Centre 07-01, 15 Jalan Kilang Barat, Singapore 159357 | Tel: +49 40 853 58 6942 Fax: +49 40 853 58 6949 Email: sales@chartworld.com Tel: +65 6513 3500 Website: http://www.chartworld.com http://www.ecdis-as-a-service.com |
| DPM (Singapore) Pte Ltd | 2 Boon Leat Terrace, #05-02/03 Harbourside 2, Singapore 119844 | Tel: +65 6270 4060 Fax: +65 6276 3858 Email: sales@dpmsingapore.com.sg Website: http://www.dpmsingapore.com.sg |
| Maritime Information Systems (MARIS) Maritime Information Systems AS (MARIS) | 52, Telok Blangah Road #01-06, Telok Blangah House, Singapore 058809 Danholmen 25, 3128 Notteroy, Norway | Tel: +65 6276 1472 Fax: +65 6276 1473 Email: : support@maris.sg Website: http://www.maris.no Tel: +47 33 30 42 50 Fax: +47 33 30 42 51 Email: : sales@maris.no Website: http://www.maris.no |
| Motion Smith | 15 Jalan Kilang Barat #08-01/05 Frontech Centre, Singapore 159357 | Tel: +65 6220 5098 Fax: +65 6225 4902 Email: sales@motsmith.com Website: http://www.motsmith.com |
| Transas Marine Pacific Pte Ltd | Cyber Centre 16/18 Jalan Kilang Barat Off Jalan Bukit Merah Singapore 159358 | Tel: +65 6271 0200 Fax: +65 6271 7300 Email: navigation.asia@transas.com Website: http://www.transas.com |
| Japan Hydrographic Association (Electronic Charts Division) | Daiichi Sogo Bldg, 6F 1-6-6, Hanedakuko, Ota-ku Tokyo 144-0041, Japan | Tel: +81 3 5708 7093 Fax: +81 3 5708 7094 Email: shimizu-6kj@jha.jp Website: http://www.jha.or.jp/en/jha/ |
| Jeppesen Norway AS | P.O Box 212 , N-4371 Egersund, Norway | Tel: +47 51 46 4700 Fax: +47 51 46 4701 Email: license.marine@jeppesen.com Website : http://www.jeppesen.com/marine |
| PRIMAR STAVANGER | Lervigsveien 36, P.O Box 60, N-4001 Stavanger, Norway | Tel: +47 51 93 9500 Fax: +47 51 93 9501 Email: sales@ecc.no Website : http://www.primar.no |
| The United Kingdom Hydrographic Office | Admiralty Way, Taunton, Somerset, TA1 2DN United Kingdom | Tel: +44 1823 33 7900 Fax: +44 1823 28 4077 Emails: ENCS.SalesReports@ukho.gov.uk Website: http://www.ukho.gov.uk |

Chart Agents for the Maritime and Port Authority of Singapore
Nautical Charts and Publications

Please approach any of the appointed chart agents to purchase the Singapore Nautical Charts and Publications.

| CHART AGENT | ADDRESS | TEL/FAX/EMAIL/WEBSITE |
|--|---|--|
| Cornes (Singapore) Pte Ltd | 10 Anson Road #23-06/6A International Plaza Singapore 079903 | Tel: +65 6223 8320 Fax: +65 6223 8321 Email: sales9850@cspl.sg Website: http://www.cornes-charts.com |
| DPM (Singapore) Pte Ltd | 2 Boon Leat Terrace, #05-02/03 Harbourside 2, Singapore 119844 | Tel: +65 6270 4060 Fax: +65 6276 3858 Email: sales@dpmsingapore.com.sg Website: http://www.dpmsingapore.com.sg |
| E.W. Liner Charts & Publications Pte Ltd | 102F, Pasir Panjang Road, #08-01, Citilink Warehouse Complex, Singapore 118530 | Tel: +65 6323 0773 Fax: +65 6323 0775 Email: ewliner@singnet.com.sg Website: http://www.ewliner.com |
| Kelvin Hughes (Singapore) Pte Ltd | 896 Dunearn Road #03-05 Sime Darby Centre Singapore 589472 | Tel: +65 6545 9880 Fax: +65 6545 8892 Email: leslie.khoo@kelvinhughes.com.sg Website: http://www.kelvinhughes.com |
| Motion Smith | 15 Jalan Kilang Barat #08-01/05 Frontech Centre Singapore 159357 | Tel: +65 6220 5098 (After office hours: +65 8163 9993) Fax: +65 6225 4902 Email: sales@motsmith.com Website: http://www.motsmith.com |

HYDROGRAPHIC NOTE - Instructions

1. Mariners are requested to notify the Chief Hydrographer, Maritime and Port Authority of Singapore, when new or suspected dangers to navigation are discovered, changes are observed in aids to navigation or where corrections to nautical publications may be necessary. Reports, which cannot be confirmed or are lacking in certain details should not be withheld.
2. Any ambiguities of time, positioning and depth should be stressed and any firm expectation of being able to check the information provided on a following voyage should be mentioned.
3. Mariners using satellite position fixing systems, eg. GPS, should provide details of equipment and datum used (where applicable). Where bearings (true or magnetic) are taken visually or by radar to fix a position, it should include more than two objects in order to provide a check on its accuracy. A position may also be defined by bearing and distance from a conspicuous object eg. beacon, lighthouse etc.
4. The note should include a tracing or a digital image of the chart used and the details should be clearly marked.
5. Echo sounders frequently register greater depths than the advertised maximum depth for the equipment, eg. a trace appearing at 50 metres may be in fact be 550 metres or even 1050 metres for equipment whose maximum depth is 500 metres. Erroneous depths caused by 2nd transmission error can usually be recognised by the following:
 - (a) the tracing being weaker than normal for the depth registered,
 - (b) the trace appearing to pass through the transmission line,
 - (c) the feathery nature of the trace.
6. Upon receipt of a hydrographic note, a Notice to Mariners may be issued. The sender's vessel or name is quoted as the source unless the same information is also received in foreign Notices to Mariners.
7. Reports of shoals, uncharted dangers and defects in aids to navigation may also be made to the appropriate Singapore Port Operations Control Centre on VHF Channels 10, 12, 14, 68 or 73.

HYDROGRAPHIC NOTE

To:

Chief Hydrographer
Maritime and Port Authority of Singapore
460 Alexandra Road PSA Building #20-00
Singapore 119963

Tel : (65) 6375 1227
Fax : (65) 6278 7646
Email : hydrographic@mpa.gov.sg

Sender's Contact Details :

Date :

Name of Vessel :

Address of Sender :

Tel : Fax :

Email :

Nature of Observation :

General Location :

Subject :

Position : Lat. Long.

Charts Used :

Date & Time of Observation :

Details :

.....

.....

Attachment :

Equipment Used :

Type of Position Fixing : GPS / DGPS Others :

Type of Echo Sounder :

Name and Signature :

Ship's/Company's Stamp :