



SINGAPOREAN NOTICES TO MARINERS

SECTION	CONTENT	Page
I	Index of Charts & Publications	1
II	New Publications	9
	Notices to Mariners and Chart Corrections	10
	Temporary and Preliminary Notices	12
III	Navigational Information	13
	Amendments to Publications	14
IV	Reprint of Radio Navigational Warnings	16
V	Extract of Admiralty Notices to Mariners for Dual-Badged Charts	17

The monthly Notices to Mariners contain corrective information affecting charts published by the Hydrographic Department, Maritime and Port Authority of Singapore. The information contained in these Notices should be updated on the charts affected. Notices under Section II apply only to the particular Singaporean Chart(s) indicated.

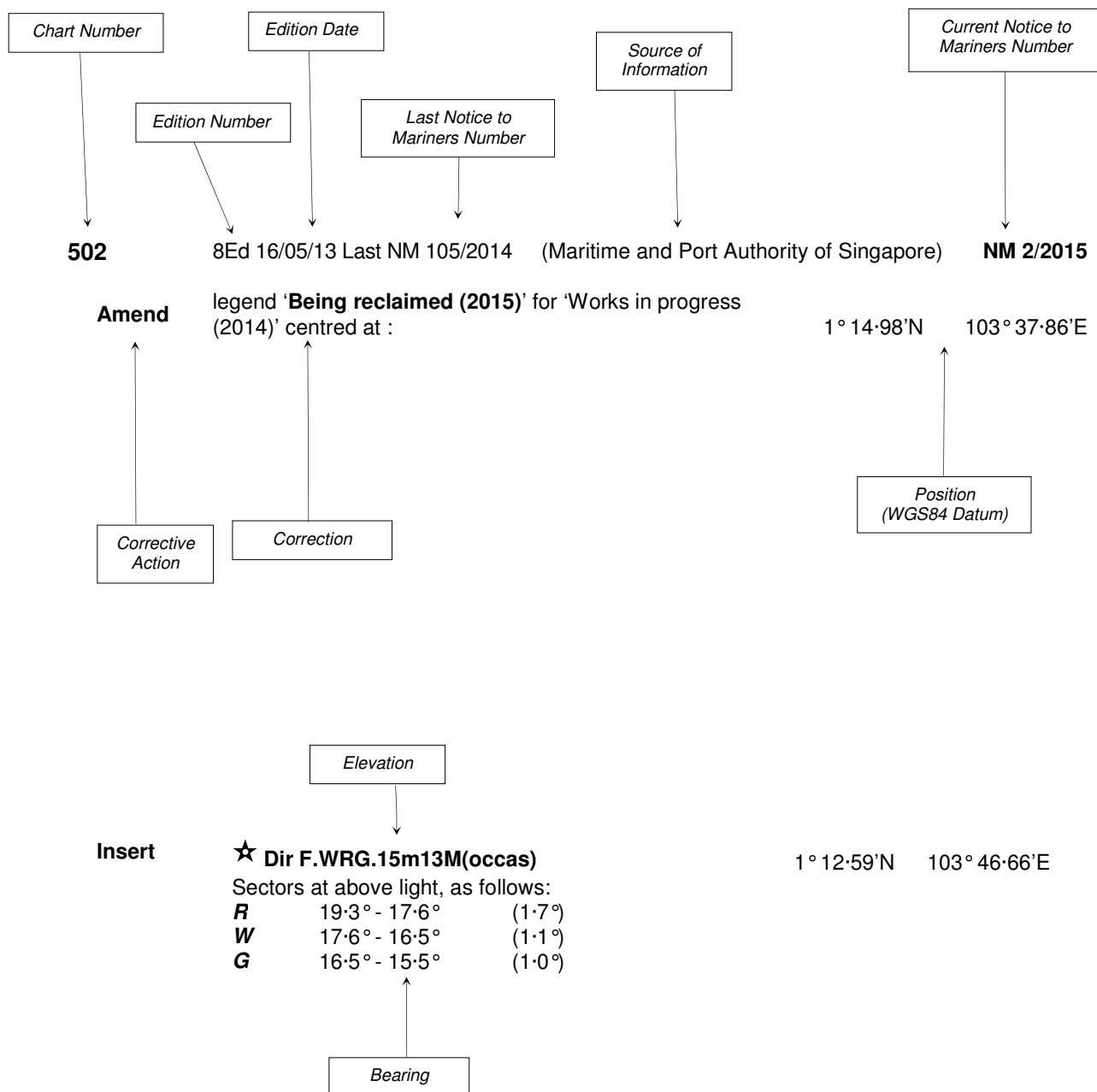
Mariners are requested to notify the Chief Hydrographer, Maritime and Port Authority of Singapore, immediately on the discovery of new dangers or suspected dangers to navigation and of changes or defects in aids to navigation. See Hydrographic Note on back page.

The monthly Singaporean Notices to Mariners can be accessed directly from the MPA website:
[http://www.mpa.gov.sg/sites/port_and_shipping/circulars_and_notices/singapore_notices_to_mariners\(ntm\).page](http://www.mpa.gov.sg/sites/port_and_shipping/circulars_and_notices/singapore_notices_to_mariners(ntm).page)

Hydrographic Department
Maritime and Port Authority of Singapore
7B Keppel Road
#20-00 Tanjong Pagar Complex
Singapore 089055
Tel: (65) 6325 2027
Fax: (65) 6226 1076
Email: hydrographic@mpa.gov.sg

EXPLANATION OF FORMAT

The elements of a typical chart correction are explained below.



Notes:

- a) Notice to Mariners number followed by:
 - T** indicates a Temporary Notice (eg. **NM 3T/2015**).
 - P** indicates a Preliminary Notice (eg. **NM 4P/2015**).
- b) Bearings are true reckoned clockwise from 000° to 359°; those relating to lights are from seaward.
- c) Heights and elevations are above Mean High Water Springs.

I
INDEX OF CHARTS AND PUBLICATIONS

INDEX OF AFFECTED CHARTS

DESCRIPTION	NOTICE NO.	PAGE NO.
Index of Singaporean Charts	-	3, 4
Index of Dual-Badged Charts	-	5 to 7
Index of Singapore Electronic Navigational Chart (ENC)	-	8
New Edition Dual Badged Charts	-	9
Singaporean Chart GSP1/SP1	*59	10
Singaporean Chart 200	60, 61	10
Singaporean Chart 201	62	10
Singaporean Chart 202	63	11
Singaporean Chart 500	*59	11
Singaporean Chart 501	*59	11
Singaporean Chart 503	63	11
Temporary and Preliminary Notices	-	12
Singapore Port Marine Notices	*64	13
Singaporean Print-On-Demand (POD) Charts	*65	13
Amendments to Publications	*66	14, 15
Reprint of Radio Navigational Warnings	-	16
Extract of Admiralty Notices to Mariners for Dual-Badged Charts	-	17 to 19
Singapore Electronic Navigational Chart (ENC) Distributors	-	20
Chart Distributors for the Maritime and Port Authority of Singapore Nautical Charts and Publications	-	21

*Source: Maritime and Port Authority of Singapore

I
INDEX OF CHARTS AND PUBLICATIONS

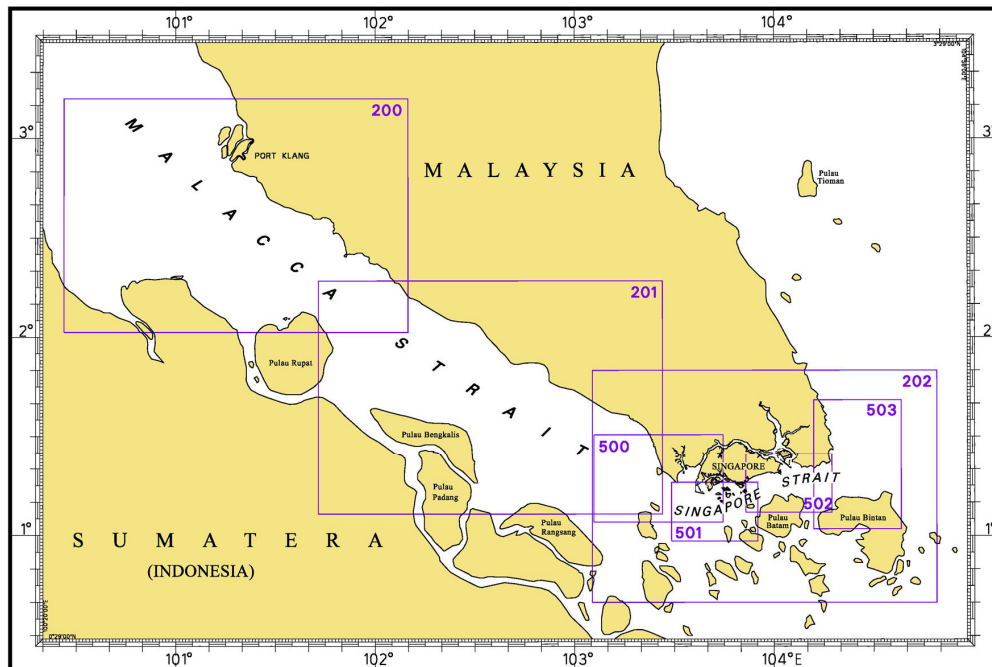
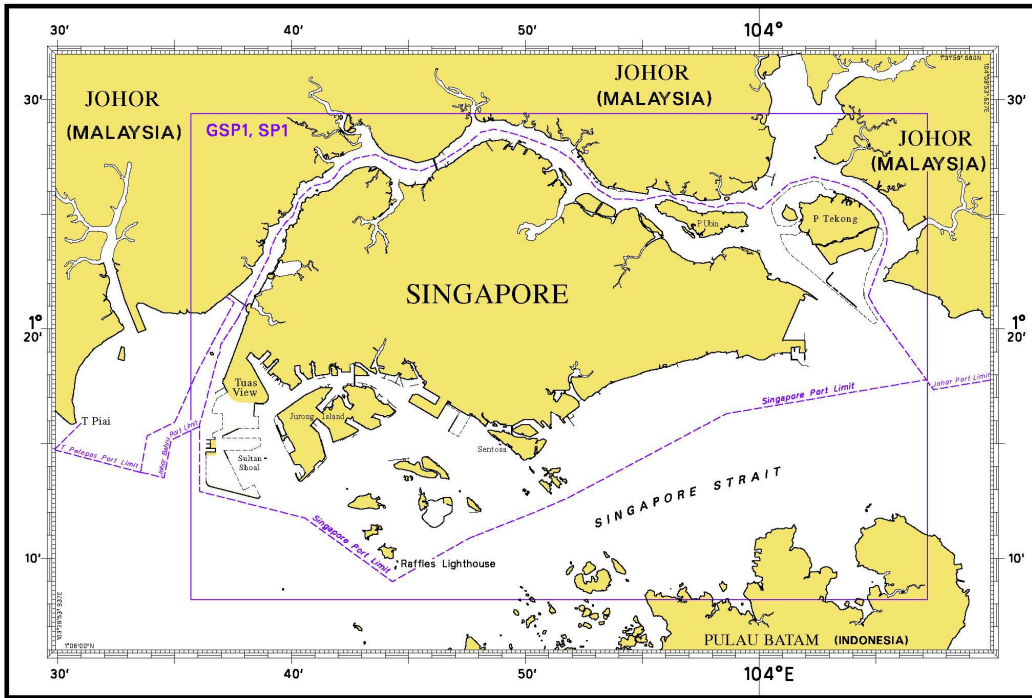
INDEX OF NOTICES

NOTICE NO.	DESCRIPTION	PAGE NO.
-	Index of Singaporean Charts	3, 4
-	Index of Dual-Badged Charts	5 to 7
-	Index of Singapore Electronic Navigational Chart (ENC)	8
-	New Edition Dual Badged Charts	9
*59	Singaporean Chart GSP1/SP1	10
60, 61	Singaporean Chart 200	10
62	Singaporean Chart 201	10
63	Singaporean Chart 202	11
*59	Singaporean Chart 500	11
*59	Singaporean Chart 501	11
63	Singaporean Chart 503	11
-	Temporary and Preliminary Notices	12
*64	Singapore Port Marine Notices	13
*65	Singaporean Print-On-Demand (POD) Charts	13
*66	Amendments to Publications	14, 15
-	Reprint of Radio Navigational Warnings	16
-	Extract of Admiralty Notices to Mariners for Dual-Badged Charts	17 to 19
-	Singapore Electronic Navigational Chart (ENC) Distributors	20
-	Chart Distributors for the Maritime and Port Authority of Singapore Nautical Charts	21

* Source: Maritime and Port Authority of Singapore

I INDEX OF CHARTS AND PUBLICATIONS

INDEX OF SINGAPOREAN CHARTS



Notes:
 Updated Singaporean Charts are available through our Print-On-Demand (POD) Chart Service. For more information, refer to Section III – Navigational Information. These charts can be purchased from our Chart Distributors.

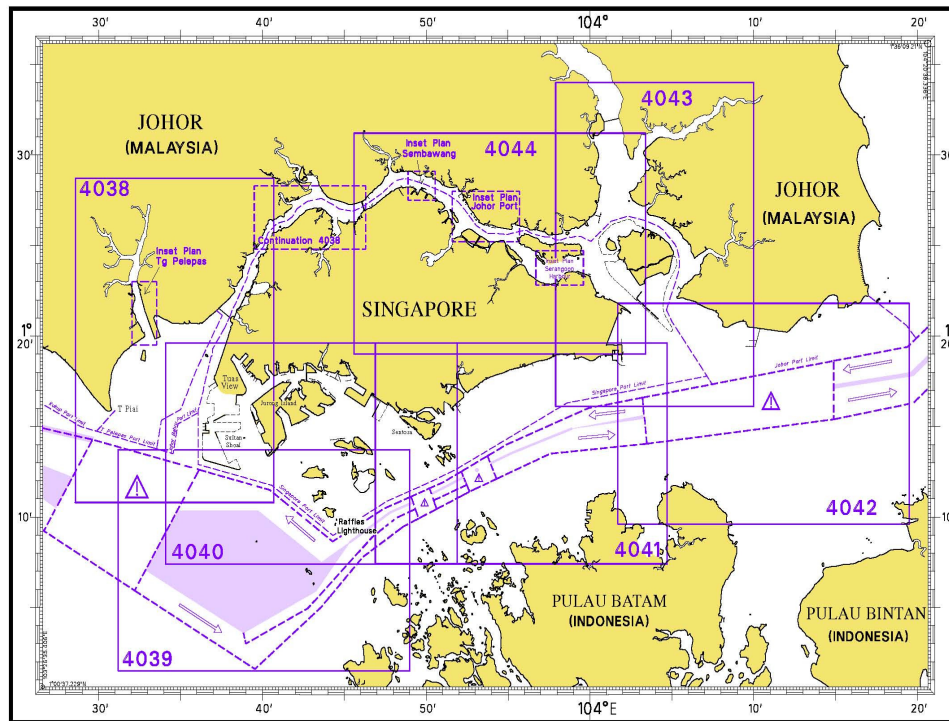
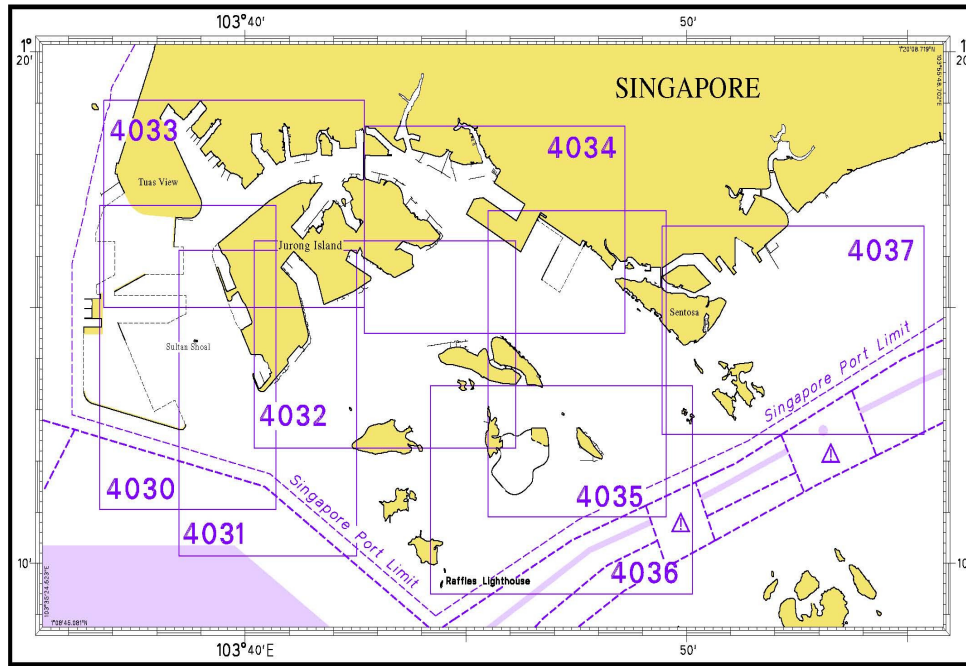
I
INDEX OF CHARTS AND PUBLICATIONS

SINGAPOREAN CHARTS

Chart No.	Chart Title	Scale 1:	Date Published of Latest Edition
GSP1	Anchorage and Aids to Navigation (with Area Reference)	60 000	02/03/2015
SP1	Anchorage and Aids to Navigation	60 000	02/03/2015
200	Malacca Strait - Port Klang to Tanjung Keling	200 000	22/09/2011
201	Malacca Strait - Tanjung Keling to Western Entrance of Singapore Strait	200 000	15/08/2014
202	Singapore Strait	200 000	26/09/2013
500	Malacca and Singapore Straits – Pulau Pisang to Raffles Lighthouse	75 000	26/09/2013
501	Singapore Strait – Western Part	50 000	03/05/2012
502	Singapore Strait - Eastern Part	50 000	03/05/2012
503	South China Sea - Eastern Approaches and Entrance to Singapore Strait	75 000	15/08/2014
-	Charts for Small Craft – Singapore Strait & Adjacent Waterways	10 000 to 200 000	02/01/2015
1	Symbols Abbreviations Terms and S-57 Objects used on Singapore Nautical and Electronic Navigational Charts. Available at MPA website http://www.mpa.gov.sg/sites/global_navigation/publications/chart1.page	-	28/07/2011

I INDEX OF CHARTS AND PUBLICATIONS

INDEX OF DUAL-BADGED CHARTS



I
INDEX OF CHARTS AND PUBLICATIONS

DUAL- BADGED CHARTS

Chart No.	Chart Title	Scale 1:	Date Published of Latest Edition
4030	Port of Singapore West Jurong Anchorages and Temasek Fairway	10 000	07/05/2015
4031	Port of Singapore Western Approaches to Jurong Island	10 000	07/05/2015
4032	Port of Singapore Sinki Fairway	10 000	15/05/2014
4033	Port of Singapore Tuas Bay, West Jurong Channel and Pesek Basin	10 000	07/05/2015
4034	Port of Singapore East Jurong Channel, Pasir Panjang Terminal and West Keppel Fairway	10 000	28/05/2015
4035	Port of Singapore Western Anchorages, Jong Fairway and Cruise Bay	10 000	28/05/2015
4036	Port of Singapore Raffles Lighthouse to The Sisters	10 000	28/05/2015
4037	Port of Singapore Keppel Harbour, Tanjong Pagar Terminal and Approaches	10 000	28/05/2015
4038	Malaysia and Singapore Johor Strait – Western Part	30 000	26/09/2013
4039	Indonesia, Singapore and Malaysia Western Approaches to Main Strait	30 000	24/04/2014
4040	Singapore, Indonesia and Malaysia Tuas View to Pulau Sakijang Bendera (S. John's Island)	30 000	14/08/2014
4041	Singapore and Indonesia Pulau Sebarok to Changi	30 000	14/08/2014

I
INDEX OF CHARTS AND PUBLICATIONS

DUAL- BADGED CHARTS

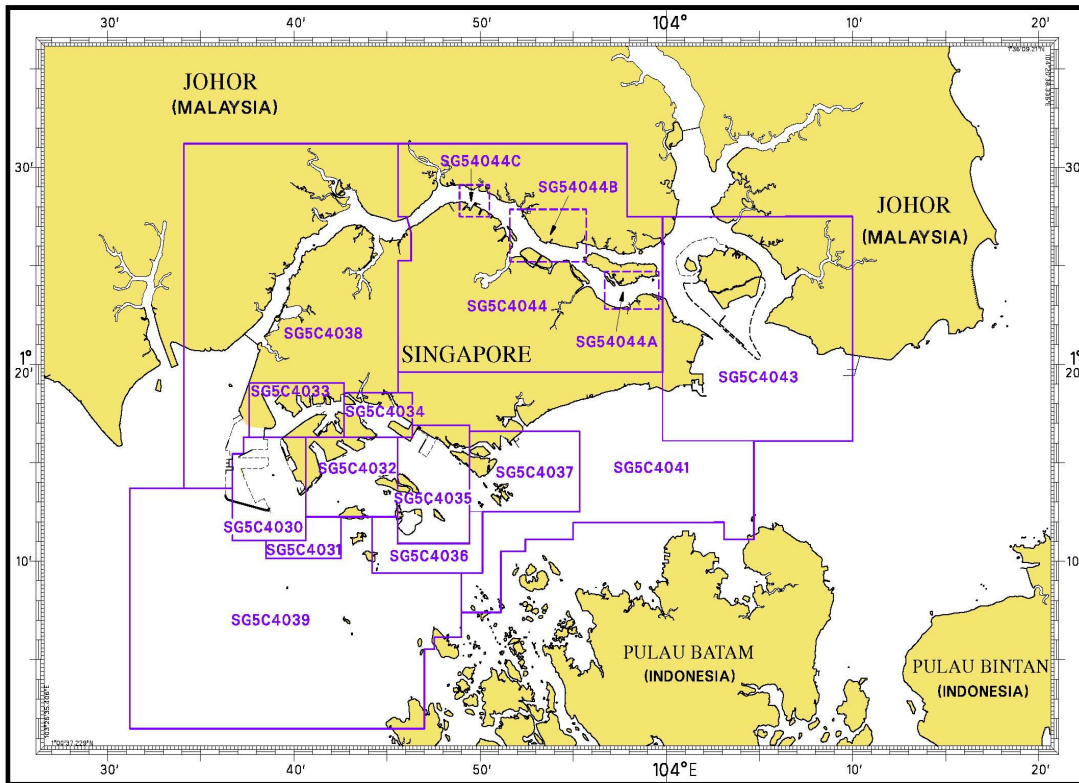
Chart No.	Chart Title	Scale 1:	Date Published of Latest Edition
4042	Indonesia, Malaysia and Singapore Changi to Pulau Mungging and Tanjung Buntan to Tanjung Tondang	30 000	24/04/2014
4043	Malaysia and Singapore Kuala Johor and Sungai Johor	30 000	09/04/2015
4044	Singapore and Malaysia Johor Strait - Eastern Part	30 000	09/04/2015

SINGAPOREAN PUBLICATIONS

Item	Title
1	Singapore Tide Tables Year 2015
2	Singapore Port Information 2014/2015

I INDEX OF CHARTS AND PUBLICATIONS

INDEX OF SINGAPORE ELECTRONIC NAVIGATIONAL CHART (ENC)



SINGAPORE ELECTRONIC NAVIGATIONAL CHART (ENC)

ENC Name	ENC Coverage	ENC Edition
SG5C4030	West Jurong Anchorages and Temasek Fairway	8 th Edition (7/05/2015)
SG5C4031	Western Approaches to Jurong Island	7 th Edition (1/09/2014)
SG5C4032	Sinki Fairway	10 th Edition (7/05/2015)
SG5C4033	Tuas Bay, West Jurong Channel and Pesek Basin	8 th Edition (7/05/2015)
SG5C4034	East Jurong Channel, Pasir Panjang Terminal and West Keppel Fairway	13 th Edition (28/05/2015)
SG5C4035	Western Anchorages, Jong Fairway and Cruise Bay	16 th Edition (28/05/2015)
SG5C4036	Raffles Lighthouse to The Sisters	9 th Edition (28/05/2015)
SG5C4037	Keppel Harbour, Tanjong Pagar Terminal and Approaches	9 th Edition (28/05/2015)
SG5C4038	Johor Strait – Western Part	7 th Edition (1/09/2014)
SG5C4039	Western Approaches to Main Strait	7 th Edition (1/09/2014)
SG5C4041	Pulau Sebarok to Changi	8 th Edition (1/09/2014)
SG5C4043	Kuala Johor	11 th Edition (9/04/2015)
SG5C4044	Johor Strait – Eastern Part	11 th Edition (9/04/2015)
SG54044A	Serangoon Harbour	2 nd Edition (9/04/2015)
SG54044B	Pelabuhan Johor (Johor Port)	2 nd Edition (9/04/2015)
SG54044C	Sembawang	2 nd Edition (9/04/2015)

The latest edition of the Singapore ENC covering Singapore Waters and their approaches can be found in our monthly Singaporean Notices to Mariners at MPA website: [http://www.mpa.gov.sg/sites/port_and_shipping/port/charts_tidal_information_and_hydrography/charts/singapore_electronic_navigational_chart\(enc\).page](http://www.mpa.gov.sg/sites/port_and_shipping/port/charts_tidal_information_and_hydrography/charts/singapore_electronic_navigational_chart(enc).page)

II NEW PUBLICATIONS

NEW EDITION DUAL- BADGED CHARTS TO BE PUBLISHED ON 27TH AUGUST 2015

Chart Number : 4040
Title : Singapore, Indonesia and Malaysia
 Tuas View to Pulau Sakijang Bendera (S. John's Island)
Coverage : Lat 01° 07' 40' N 01° 19' 60' N
 Long 103° 34' 10' E 103° 51' 90' E
Scale : 1: 30 000
Date Published : 27th August 2015
Size of Chart : 1100.6 x 749.5 mm
Descriptions : This new edition includes updates covering west of Tuas Reclamation, Temasek Fairway, West Jurong Channel, Pesek Basin, Banyan Basin, Sinki Fairway, East Jurong Channel, Sisters Fairway, Southern Fairway and East Keppel Fairway.

The existing chart of the same number published on 14th August 2014 will be superseded.

Chart Number : 4041
Title : Singapore and Indonesia
 Pulau Sebarok to Changi
Coverage : Lat 01° 07' 40' N 01° 19' 60' N
 Long 103° 46' 90' E 104° 04' 70' E
Scale : 1: 30 000
Date Published : 27th August 2015
Size of Chart : 1100.6 x 749.5 mm
Descriptions : This new edition includes updates covering Eastern Fairway, approaches to Eastern Fairway, approaches to Marina South, East Keppel Fairway, St John Dumping Ground, west of Sentosa, Sisters Fairway and Southern Fairway.

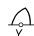
The existing chart of the same number published on 14th August 2014 will be superseded.

NEW EDITION SINGAPORE ENC TO BE RELEASED ON 27TH August 2015

ENC Name : SG5C4041
Location : Pulau Sebarok to Changi
Coverage : Lat 01° 11' 050' N 01° 16' 300' N
 Long 103° 36' 700' E 103° 40' 640' E
Compilation Scale : 1: 12 000
Date Released : 27th August 2015
Descriptions : This new edition includes updates covering Eastern Fairway, approaches to Eastern and Southern Fairway.

The existing cell of the same name released on 1st September 2014 will be superseded.

II
NOTICES TO MARINERS AND CHART CORRECTIONS

GSP1/SP1 10Ed 2/03/15 Last NM 51/2015 (Maritime and Port Authority of Singapore) **NM 59/2015**
Delete  *Fl.Y.2s Satumu 1* 1°09'44"N 103°44'40"E





200 3Ed 22/09/11 Last NM 52/2015 (Admiralty Notice No. 24/2924/2015) **NM 60/2015**
Insert depth, *17₆*, enclosed by 20m contour 2°35'21"N 101°26'04"E
depth, *1₅*, and extend 5m contour W to enclose (a) 2°18'54"N 101°03'55"E
Delete depth, *4₅*, close E of: (a) above
Insert sector at light, Fl.5s46m18M, as follows: 2°52'80"N 100°33'97"E
W 090° - 000° (270°)
Obscd 000° - 090°

(Admiralty Notice No. 26/3201/2015) **NM 61/2015**

Insert depth, *2₈*, enclosed by 5m contour (a) 3°07'24"N 101°05'16"E
2°58'33"N 101°08'93"E
depth, *5₁*, and extend 10m contour SW to enclose 3°05'22"N 101°06'69"E
depth, *1₄*, enclosed by 2m contour 3°03'23"N 101°04'88"E
depth, *5₂* 3°01'65"N 100°56'84"E
depth, *11₅* (b) 2°54'15"N 101°06'08"E
depth, *18₇*, enclosed by 20m contour (c) 2°39'08"N 101°29'20"E
depth, *10₁* (d) 2°33'56"N 101°35'74"E
Replace depth, *6₁*, with depth, *3₆*, enclosed by 5m contour 2°54'57"N 100°57'90"E
Delete depth, *11₂*, close NW of: (a) above
depth, *14₆*, close NW of: (b) above
depth, *23*, close NW of: (c) above
depth, *12₈*, close SE of: (d) above

201 5Ed 15/08/14 Last NM 33/2015 (BA 3947 Feb 12) **NM 62/2015**
Insert light character '**Q.6m8M**' at Beacon 1°12'68"N 102°09'65"E

II
NOTICES TO MARINERS AND CHART CORRECTIONS

202	7Ed 26/09/13 Last NM 42/2015	(Indonesian Notice to Mariners No. 20/250/2015)	NM 63/2015
Insert	 <i>Wk</i>		1°12'00"N 104°18'00'E
<hr/>			
500	7Ed 26/09/13 Last NM 50/2015	(Maritime and Port Authority of Singapore)	NM 59/2015
Delete	 <i>Fl.Y.2s Satumu 1</i>		1°09'44"N 103°44'40'E
<hr/>			
501	6Ed 3/05/12 Last NM 50/2015	(Maritime and Port Authority of Singapore)	NM 59/2015
Delete	 <i>Fl.Y.2s Satumu 1</i>		1°09'44"N 103°44'40'E
<hr/>			
503	5Ed 15/08/14 Last NM 42/2015	(Indonesian Notice to Mariners No. 20/250/2015)	NM 63/2015
Insert	 <i>Wk</i>		1°12'00"N 104°18'00'E
<hr/>			

II
TEMPORARY AND PRELIMINARY NOTICES

NIL

III NAVIGATIONAL INFORMATION

***(NM 64/2015) SINGAPORE PORT MARINE NOTICES**

The Port Marine Notices shortlisted below would be of particular interest to mariners. Details and complete list of Port Marine Notices are available at this link:

http://www.mpa.gov.sg/sites/port_and_shipping/circulars_and_notices/port_marine_notices.page

PMN No.	Subject
57/2015	Reclamation at Pasir Panjang Terminal Phase 3 and 4.
58/2015	Reclamation work off Temasek Fairway, west of Jurong Island.
59/2015	Soil investigation at Temasek Fairway.
60/2015	Mooring and unmooring of vessels at Banyan Basin, Jurong Island.
61/2015	Mooring and unmooring of vessels off Jurong Island, off Temasek Fairway.
62/2015	Reclamation work at Jurong Island, off Pesek Basin.
63/2015	Construction of bridge over King's Dock at Keppel Bay Drive.
70/2015	Reclamation, sand re-handling and soil investigation works off LNG/LPG/Chemical Gas Carrier (ALGAS) Anchorage.
73/2015	National Day 2015 Flypast and Rehearsals.

***(NM 65/2015) SINGAPOREAN PRINT-ON-DEMAND (POD) CHARTS**

Print-On-Demand (POD) Charts are the most up-to-date paper nautical charts printed for navigational use. These nautical charts are produced in accordance with the International Hydrographic Organisation (IHO) chart specifications. These official nautical charts are continually updated to the latest Notices to Mariners before they are printed and sold to users.

These POD Charts include 200, 201, 202, 500, 501, 502 and 503.

BENEFITS TO OUR CUSTOMERS

Convenience

Customers need not make numerous hand corrections to the nautical charts before use. In addition the updated POD Charts are more accurate and reliable than offset printed charts with hand corrections.

Clarity

Clarity in the presentation of updated information as compared to lithographic printed charts, where in some cases there are several overlapping corrections over existing information.

Coverage

The POD Charts cover the Malacca and Singapore Straits, from One Fathom Bank to Horsburgh Lighthouse.

*Source: Maritime and Port Authority of Singapore

III
AMENDMENTS TO PUBLICATIONS

*(NM 66/2015) UPDATING OF PUBLICATION "SINGAPORE PORT INFORMATION 2014/2015"

1. Page 158

CHARACTERISTICS OF AIDS TO NAVIGATION

PULAU TEKONG

Insert the following:

Name of Beacon/Buoy	Position Lat. N Long. E Deg Min	Structure Colour & Shape	Light Characteristic	Owner
TJUT-1 Buoy	01° 22.591' 104° 01.949'	Green conical	Fl.G.4s	Toa Corporation/ Jan de Nul JV
TJUT-3 Buoy	01° 23.350' 104° 01.057'	Green conical	Fl.G.2s	Toa Corporation/ Jan de Nul JV
TJUT-5 Buoy	01° 24.218' 104° 00.759'	Green conical	Fl.G.4s	Toa Corporation/ Jan de Nul JV
TJUT-6 Buoy	01° 24.583' 104° 00.634'	Green conical	Fl(2)G.10s	Toa Corporation/ Jan de Nul JV
TJUT-9 Buoy	01° 21.074' 104° 03.734'	Green conical	Fl.G.4s	Toa Corporation/ Jan de Nul JV
TJUT-10 Buoy	01° 21.079' 104° 04.776'	Red can	Fl.R.2s	Toa Corporation/ Jan de Nul JV
TJUT-11 Buoy	01° 22.267' 104° 04.876'	Red can	Fl.R.6s	Toa Corporation/ Jan de Nul JV
TJUT-18 Buoy	01° 26.271' 104° 01.343'	Yellow pillar	Fl.Y.4s	Toa Corporation/ Jan de Nul JV
TJUT-19 Buoy	01° 26.544' 104° 02.353'	Double black cones points upward on yellow pillar	Q.FI	Toa Corporation/ Jan de Nul JV
TJUT-20 Buoy	01° 26.260' 104° 03.478'	Yellow pillar	Fl.Y.2s	Toa Corporation/ Jan de Nul JV
TJUT-21 Buoy	01° 20.600' 104° 04.290'	Green conical	Fl.G.2s	Toa Corporation/ Jan de Nul JV
TJUT-22 Buoy	01° 23.661' 104° 05.391'	Red can	Fl.R.10s	Toa Corporation/ Jan de Nul JV
TJUT-23 Buoy	01° 24.376' 104° 05.375'	Red can	Fl.R.2s	Toa Corporation/ Jan de Nul JV

III
AMENDMENTS TO PUBLICATIONS

2. Page 170 – Item 15

WHARVES AND BERTHS

JURONG ISLAND (EXXONMOBIL ASIA PACIFIC PTE LTD) (1°16.8'N, 103°41.5'E)

Amend the following:

Berth	Length of Berth	Max LOA	Depth Alongside (Year Surveyed)	Controlling Depth In Approaches
No.5	305m	305m	15.0m (2015)	12.1m

3. Page 176 – Item 35

PULAU SEBAROK (SINGAPORT CLEANSEAS PTE LTD) (1°12.5'N, 103°47.5'E)

Insert the following:

Berth	Length of Berth	Depth Alongside (Year Surveyed)	Controlling Depth In Approaches
SCT 1	56m	14.5m (2015)	-

4. Page 182 – Item 45

JURONG ISLAND (STOLHAVEN TERMINAL JETTY) (1°16.6'N, 103°39.8'E)

Insert the following:

Berth	Length of Berth	Width of Berth	Depth Alongside (Year Surveyed)	Controlling Depth In Approaches
OST 1	203.5m	35.5m	12.9m (2015)	12.1m
OST 2	203.5m	36m	12.1m (2015)	-
OST 3	93.7m	35.5m	12.6m (2015)	-

IV
REPRINT OF RADIO NAVIGATIONAL WARNINGS

The following Radio Navigational Warnings have been shortlisted, as they would be of particular interest to mariners.

TT175

VESSELS IN EAST JOHOR STRAIT ARE ADVISED TO NAVIGATE WITH CAUTION WHEN NEAR THE PROJECT AREAS OFF PULAU TEKONG, CHANGI AND MALANG PAPAN AS SHALLOW WATER AREAS EXIST. VESSELS ARE ADVISED TO KEEP LOOKOUT FOR TUGS AND BARGES NAVIGATING NEAR THE PROJECT AREAS AND PASSENGER FERRIES CROSSING BETWEEN CHANGI AND PULAU TEKONG AND VICINITY OF PASIR GUDANG.

TT254

A NEW YELLOW BUOY NAMED "ADCP BUOY B" FL(Y) 4 SEC HAS BEEN LAID AT POSITION LAT 01° 15.18'N LONG 103° 55.87'E, GRID REF 5515D. ALL VESSELS ARE ADVISED TO NAVIGATE WITH CAUTION.

TT262

EAST CARDINAL BUOY VQ(3)5s IN POSITION LAT 01° 12.58'N LONG 103° 38.88'E IS REPORTED DAMAGED. VESSELS ARE ADVISED TO NAVIGATE WITH EXTRA CAUTION.

TT263(AMENDED 131820Z)

BATU BERHANTI ISOLATED DANGER BUOY FL(2)5S IS REMOVED FOR MAINTENANCE. ALL VESSELS IN THE VICINITY ARE ADVISED TO NAVIGATE WITH EXTRA CAUTION.

TT265

BUFFALO ROCK ISOLATED DANGER BUOY FL(2) 5SECS IN POSITION LAT 01° 09.9'N LONG 103° 48.1'E IS REMOVED FOR MAINTENANCE. ALL VESSELS PASSING THE VICINITY ARE ADVISED TO NAVIGATE WITH EXTRA CAUTION.

TT266

RACON DELTA IN POSITION LAT 01° 03.60'N LONG 103° 38.85'E IS REMOVED FOR MAINTENANCE. ALL VESSELS PASSING THE VICINITY ARE ADVISED TO NAVIGATE WITH EXTRA CAUTION.

TT961

VESSELS INTENDING TO CROSS THE TRAFFIC SEPARATION SCHEME(TSS) OR PRECAUTIONARY AREAS IN THE SINGAPORE STRAIT DURING THE HOURS OF DARKNESS ARE RECOMMENDED TO DISPLAY THE NIGHT SIGNALS CONSISTING OF 3 ALL-ROUND GREEN LIGHTS IN A VERTICAL LINE WITH EFFECT FROM 1ST JULY 2011 AT 010000UTC (0800SGT) AS DETAILED IN MARITIME AND PORT AUTHORITY OF SINGAPORE'S PORT MARINE CIRCULAR, 02 OF 2011 DATED 30 MAY 2011.

ISSUED BY SINGAPORE PORT OPERATIONS CONTROL CENTRE (as at 28th June 2015)

V
**EXTRACT OF ADMIRALTY NOTICES TO MARINERS
 FOR DUAL-BADGED CHARTS**

These notices can also be accessed directly from UKHO Website:

<http://www.ukho.gov.uk/ProductsandServices/MartimeSafety/Pages/NMPublic.aspx>

2898 SINGAPORE – East Keppel Fairway NE – Light-beacon.

Source: Maritime and Port Authority of Singapore

Chart 4041 [*previous update 1449/15*] WGS84 DATUM

Amend designation of beacon to, **MBCC-1** 1° 15′·77N., 103° 52′·08E.

2969 MALAYSIA – Peninsular Malaysia, East Coast – Johor SE – Buoyage.

Chart 4043 [*previous update New Edition 09/04/2015*] WGS84 DATUM

Insert  **FI.Y.5s TLS1** 1° 26′·39N., 104° 00′·45E.

 **FI(2)Y.10s TLS2** 1° 25′·88N., 104° 00′·32E.

 **FI.R.5s TLR** (a) 1° 25′·71N., 104° 00′·29E.

 **FI.Y.5s TLSSP** 1° 25′·80N., 104° 00′·60E.

 **FI.G.5s TLG** (b) 1° 26′·29N., 104° 00′·99E.

Delete  **FI.R.5s TL1**, close S of: (a) above

 **FI(3)G.8s TGL**, close NE of: (b) above

Chart 4044 [*previous update New Edition 09/04/2015*] WGS84 DATUM

Insert  **FI.Y.5s TLS1** 1° 26′·39N., 104° 00′·45E.

 **FI(2)Y.10s TLS2** 1° 25′·88N., 104° 00′·32E.

 **FI.R.5s TLR** (a) 1° 25′·71N., 104° 00′·29E.

 **FI.Y.5s TLSSP** 1° 25′·80N., 104° 00′·60E.

 **FI.G.5s TLG** (b) 1° 26′·29N., 104° 00′·99E.

Delete  **FI.R.5s TL1**, close S of: (a) above

 **FI(3)G.8s TGL**, close NE of: (b) above

3185 SINGAPORE – Selat Sinki – NM Block. Light-beacons. Leading line. Legend.

Source: Maritime and Port Authority of Singapore

Chart 4032 [*previous update 1710/15*] WGS84 DATUM

Insert the accompanying block, centred on: 1° 15′·993N., 103° 41′·145E.

 **Q.R.6m5M OTB Front** 1° 14′·213N., 103° 45′·064E.


symbol, white light-beacon with triangular topmark, apex downwards, **Iso.R.4s13m5M OTB Rear** (a) 1° 14′·171N., 103° 45′·010E.

leading line, pecked line for 600m, extending in direction 52·3°, from: (b) (a) above
 legend, 232·3°, seaward end of: (b) above

V
**EXTRACT OF ADMIRALTY NOTICES TO MARINERS
 FOR DUAL-BADGED CHARTS**

3185 SINGAPORE – Selat Sinki – NM Block. Light-beacons. Leading line. Legend. (continued)

Chart 4040 [*previous update 1710/15*] WGS84 DATUM

Insert  **Q.R** 1° 14'·21N., 103° 45'·06E.
 symbol, white light-beacon with triangular topmark, apex downwards, **Iso.R.4s**
 leading line, pecked line for 600m, extending in direction (a) 1° 14'·17N., 103° 45'·01E.
 52·3°, from: (b) (a) above
 legend, **232·3**°, seaward end of: (b) above

3188 SINGAPORE – Jurong Island W – NM Blocks. Wrecks. Buoyage. Legend. Note. Anchorage area. Maritime Limit. Fairway.

Source: Maritime and Port Authority of Singapore

Chart 4030 [*previous update New Edition 07/05/15*] WGS84 DATUM




Insert  **FI(3)R.15s F2-DDJV-4** 1° 14'·994N., 103° 38'·922E.
 **FI.R.4s F2-DDJV-3** 1° 15'·333N., 103° 38'·760E.
 maritime limit, pecked line, joining: 1° 14'·648N., 103° 38'·152E.
 (existing limit)
 limit of fairway, pecked line, joining: 1° 14'·932N., 103° 38'·760E.
 (existing limit)
 1° 15'·000N., 103° 38'·915E.
 (existing limit)
 1° 14'·504N., 103° 39'·153E.
 (existing limit)
Delete limit of anchorage area, pecked line, joining: 1° 13'·807N., 103° 37'·661E.
 1° 14'·305N., 103° 37'·425E.
 1° 15'·002N., 103° 38'·918E.
 1° 14'·505N., 103° 39'·155E.
 legend, *West Jurong* , centred on: 1° 14'·347N., 103° 38'·165E.

Chart 4031 [*previous update New Edition 07/05/15*] WGS84 DATUM






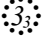
Insert  **FI(3)R.15s F2-DDJV-4** 1° 14'·994N., 103° 38'·922E.
 **FI.R.4s F2-DDJV-3** 1° 15'·333N., 103° 38'·760E.
 maritime limit, pecked line, joining: (existing limit)
 1° 14'·810N., 103° 38'·500E.
 (W border)
 limit of fairway, pecked line, joining: 1° 14'·932N., 103° 38'·760E.
 (existing limit)
 1° 15'·000N., 103° 39'·915E.
 (existing limit)
 1° 14'·504N., 103° 39'·153E.
 (existing limit)
Delete limit of anchorage area, pecked line, joining: 1° 14'·807N., 103° 38'·500E.
 (W border)
 1° 15'·002N., 103° 38'·918E.
 1° 14'·505N., 103° 39'·155E.
 legend, *West Jurong* , centred on: 1° 14'·588N., 103° 38'·769E.

Chart 4038 (Panel A, Town Reach) [*previous update 17/10/15*] WGS84 DATUM

Insert  **Wk** 1° 26'·23N., 103° 41'·77E.
 **Wk** 1° 26'·65N., 103° 42'·02E.
 **Wk** 1° 27'·26N., 103° 42'·99E.

V

**EXTRACT OF ADMIRALTY NOTICES TO MARINERS
FOR DUAL-BADGED CHARTS**

3188 SINGAPORE – Jurong Island W – NM Blocks. Wrecks. Buoyage. Legend. Note. Anchorage area. Maritime Limit. Fairway. (continued)

Chart 4038 [*previous update 17/10/15*] WGS84 DATUM

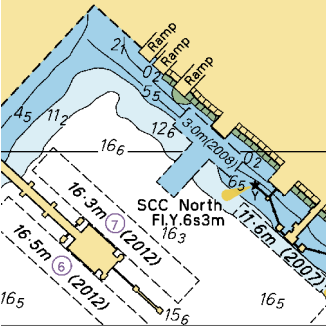
Insert	the accompanying block, centred on:	1° 14'·97N., 103° 38'·57E.
	the accompanying note, BEING RECLAIMED , centred on:	1° 22'·46N., 103° 35'·56E.

Chart 4040 [*previous update 3185/15*] WGS84 DATUM

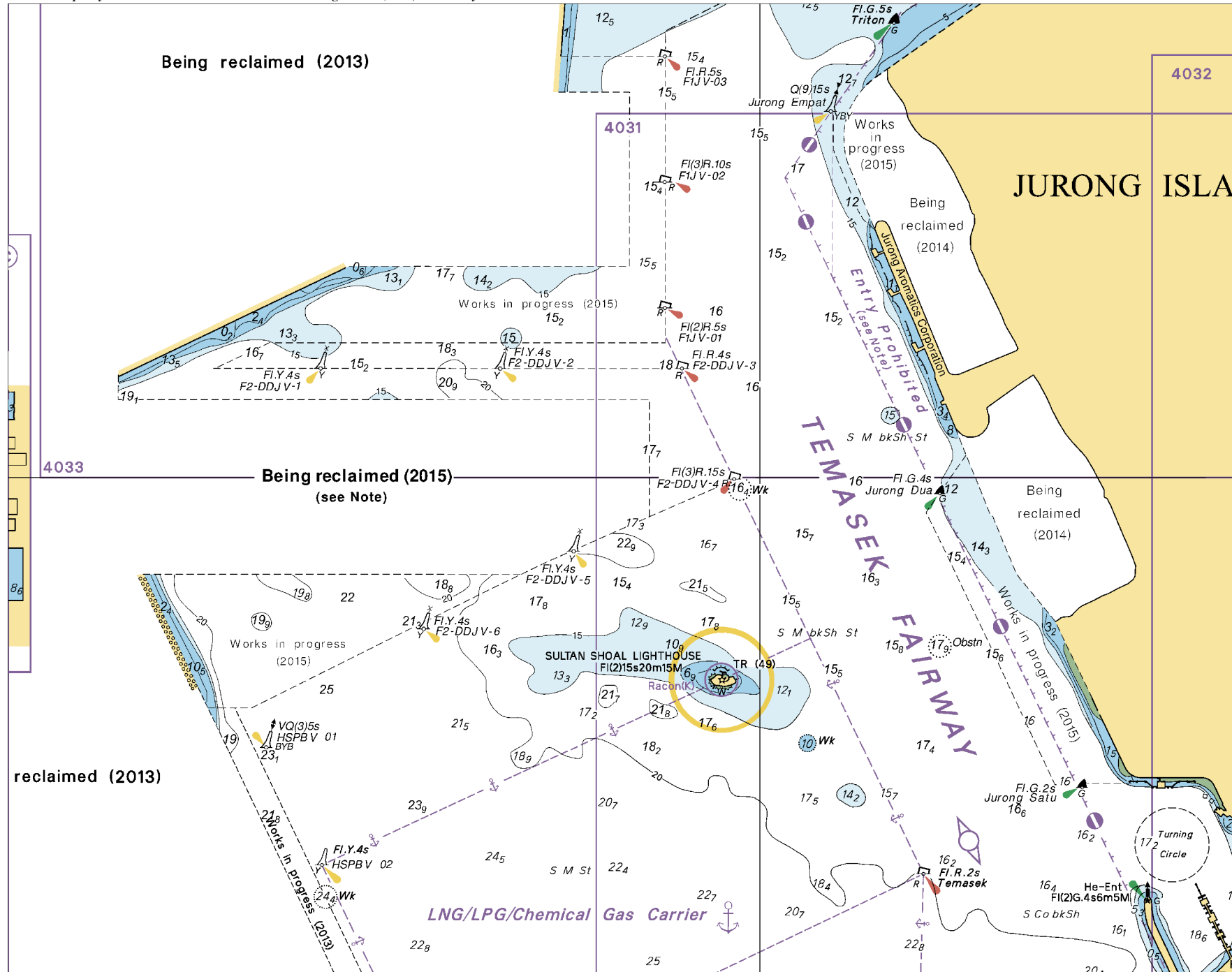
Insert	the accompanying block, centred on:	1° 14'·98N., 103° 38'·53E.
Replace	the existing note with the accompanying note, BEING RECLAIMED , centred on:	1° 17'·33N., 103° 49'·00E.

Updated to Admiralty Notices to Mariners Edition No. 26 of 2015 dated 25th June 2015.

To accompany Notice to Mariners 3185/15. Image Size (mm) 43.2 by 43



Block for Chart No 4032



To accompany Notice to Mariners 3188/15

On Chart 4038

BEING RECLAIMED (1° 14'·9N., 103° 37'·7E.)
Reclamation works are in progress in this area. The working area is marked by buoys. Mariners are advised to keep well clear and not to enter the working area. Depths within the working area will be shallower as the reclamation progresses. Uncharted buoys may be present within the working area. For further information consult the local authorities and see the relevant Singaporean Port Marine Notices available at the MPA website: <http://www.mpa.gov.sg>.

To accompany Notice to Mariners 3188/15

On Chart 4040

BEING RECLAIMED
(1° 15'·8N., 103° 47'·2E. and 1° 14'·9N., 103° 37'·7E.)
Reclamation works are in progress in these areas. The working areas are marked by buoys. Mariners are advised to keep well clear and not enter the working areas. Depths within the working area will be shallower as the reclamation progresses. Uncharted buoys may be present within the working areas. For further information consult the local authorities and see the relevant Singaporean Port Marine Notices available at the MPA website: <http://www.mpa.gov.sg>.

SINGAPORE ENC DISTRIBUTORS

ENC DISTRIBUTOR	ADDRESS	TEL/FAX /EMAIL/WEBSITE
ChartWorld GmbH	Atlantic Haus, Zirkusweg 1 D-20359 Hamburg Germany	Tel: +49 40 853 58 6942 Fax: +49 40 853 58 6949 Email: sales@chartworld.com
ChartWorld Asia Pacific Pte Ltd.	Frontech Centre 07-01, 15 Jalan Kilang Barat, Singapore 159357	Tel: +65 6513 3500 Website: http://www.chartworld.com http://www.ecdis-as-a-service.com
DPM (Singapore) Pte Ltd	2 Boon Leat Terrace, #05-02/03 Harbourside 2, Singapore 119844	Tel: +65 6270 4060 Fax: +65 6276 3858 Email: sales@dpmsingapore.com.sg Website: http://www.dpmsingapore.com.sg
Maritime Information Systems (MARIS)	52, Telok Blangah Road #01-06, Telok Blangah House, Singapore 058809	Tel: +65 6276 1472 Fax: +65 6276 1473 Email: : support@maris.sg Website: http://www.maris.no
Maritime Information Systems AS (MARIS)	Danholmen 25, 3128 Notteroy, Norway	Tel: +47 33 30 42 50 Fax: +47 33 30 42 51 Email: : sales@maris.no Website: http://www.maris.no
Motion Smith	15 Jalan Kilang Barat #08-01/05 Frontech Centre, Singapore 159357	Tel: +65 6220 5098 Fax: +65 6225 4902 Email: sales@motsmith.com Website: http://www.motsmith.com
Transas Marine Pacific Pte Ltd	Cyber Centre 16/18 Jalan Kilang Barat Off Jalan Bukit Merah Singapore 159358	Tel: +65 6271 0200 Fax: +65 6271 7300 Email: navigation.asia@transas.com Website: http://www.transas.com
Japan Hydrographic Association (Electronic Charts Division)	Daiichi Sogo Bldg, 6F 1-6-6, Hanedakuko, Ota-ku Tokyo 144-0041, Japan	Tel: +81 3 5708 7093 Fax: +81 3 5708 7094 Email: shimizu-6kj@jha.jp Website: http://www.jha.or.jp/en/jha/
Jeppesen Norway AS	P.O Box 212 , N-4371 Egersund, Norway	Tel: +47 51 46 4700 Fax: +47 51 46 4701 Email: license.marine@jeppesen.com Website : http://www.jeppesen.com/marine
PRIMAR STAVANGER	Lervigsveien 36, P.O Box 60, N-4001 Stavanger, Norway	Tel: +47 51 93 9500 Fax: +47 51 93 9501 Email: sales@ecc.no Website : http://www.primar.no
The United Kingdom Hydrographic Office	Admiralty Way, Taunton, Somerset, TA1 2DN United Kingdom	Tel: +44 1823 33 7900 Fax: +44 1823 28 4077 Emails: ENCS.SalesReports@ukho.gov.uk Website: http://www.ukho.gov.uk

Chart Distributors for the Maritime and Port Authority of Singapore
Nautical Charts and Publications

Please approach any of the Chart Distributors to purchase the Singapore Nautical Charts and Publications.

CHART DISTRIBUTORS	ADDRESS	TEL/FAX/EMAIL/WEBSITE
Cornes (Singapore) Pte Ltd	10 Anson Road #23-06/6A International Plaza Singapore 079903	Tel: +65 6223 8320 Fax: +65 6223 8321 Email: sales9850@cspl.sg Website: http://www.cornes-charts.com
DPM (Singapore) Pte Ltd	2 Boon Leat Terrace, #05-02/03 Harbourside 2, Singapore 119844	Tel: +65 6270 4060 Fax: +65 6276 3858 Email: sales@dpmsingapore.com.sg Website: http://www.dpmsingapore.com.sg
E.W. Liner Charts & Publications Pte Ltd	100, Pasir Panjang Road, #05-10, Singapore 118518	Tel: +65 6323 0773 Fax: +65 6323 0775 Email: ewliner@singnet.com.sg Website: http://www.ewliner.com
Kelvin Hughes (Singapore) Pte Ltd	896 Dunearn Road #03-05 Sime Darby Centre Singapore 589472	Tel: +65 6545 9880 Fax: +65 6545 8892 Email: leslie.khoo@kelvinhughes.com.sg Website: http://www.kelvinhughes.com
Motion Smith	15 Jalan Kilang Barat #08-01/05 Frontech Centre Singapore 159357	Tel: +65 6220 5098 (After office hours:+65 8163 9993) Fax: +65 6225 4902 Email: sales@motsmith.com Website: http://www.motsmith.com

HYDROGRAPHIC NOTE - Instructions

1. Mariners are requested to notify the Chief Hydrographer, Maritime and Port Authority of Singapore, when new or suspected dangers to navigation are discovered, changes are observed in aids to navigation or where corrections to nautical publications may be necessary. Reports, which cannot be confirmed or are lacking in certain details should not be withheld.
2. Any ambiguities of time, positioning and depth should be stressed and any firm expectation of being able to check the information provided on a following voyage should be mentioned.
3. Mariners using satellite position fixing systems, eg. GPS, should provide details of equipment and datum used (where applicable). Where bearings (true or magnetic) are taken visually or by radar to fix a position, it should include more than two objects in order to provide a check on its accuracy. A position may also be defined by bearing and distance from a conspicuous object eg. beacon, lighthouse etc.
4. The note should include a tracing or a digital image of the chart used and the details should be clearly marked.
5. Echo sounders frequently register greater depths than the advertised maximum depth for the equipment, eg. a trace appearing at 50 metres may be in fact be 550 metres or even 1050 metres for equipment whose maximum depth is 500 metres. Erroneous depths caused by 2nd transmission error can usually be recognised by the following:
 - (a) the tracing being weaker than normal for the depth registered,
 - (b) the trace appearing to pass through the transmission line,
 - (c) the feathery nature of the trace.
6. Upon receipt of a hydrographic note, a Notice to Mariners may be issued. The sender's vessel or name is quoted as the source unless the same information is also received in foreign Notices to Mariners.
7. Reports of shoals, uncharted dangers and defects in aids to navigation may also be made to the appropriate Singapore Port Operations Control Centre on VHF Channels 10, 12, 14, 68 or 73.

HYDROGRAPHIC NOTE

To:

Chief Hydrographer
Maritime and Port Authority of Singapore
7B Keppel Road #20-00 Tanjong Pagar Complex
Singapore 089055

Tel : (65) 6325 2027
Fax : (65) 6226 1076
Email : hydrographic@mpa.gov.sg

Sender's Contact Details :

Date :

Name of Vessel :

Address of Sender :

Tel : Fax :

Email :

Nature of Observation :

General Location :

Subject :

Position : Lat. Long.

Charts Used :

Date & Time of Observation :

Details :

.....

.....

Attachment :

Equipment Used :

Type of Position Fixing : GPS / DGPS Others :

Type of Echo Sounder :

Name and Signature :

Ship's/Company's Stamp :