



## SINGAPOREAN NOTICES TO MARINERS

---

SECTION	CONTENT	Page
I	Index of Charts & Publications	1
II	New Publications	9
	Notices to Mariners and Chart Corrections	12
	Temporary and Preliminary Notices	14
III	Navigational Information	15
	Amendments to Publications	17
IV	Reprint of Radio Navigational Warnings	20
V	Extract of Admiralty Notices to Mariners for Dual-Badged Charts	21

---

The monthly Notices to Mariners contain corrective information affecting charts published by the Hydrographic Department, Maritime and Port Authority of Singapore. The information contained in these Notices should be updated on the charts affected. Notices under Section II apply only to the particular Singaporean Chart(s) indicated.

---

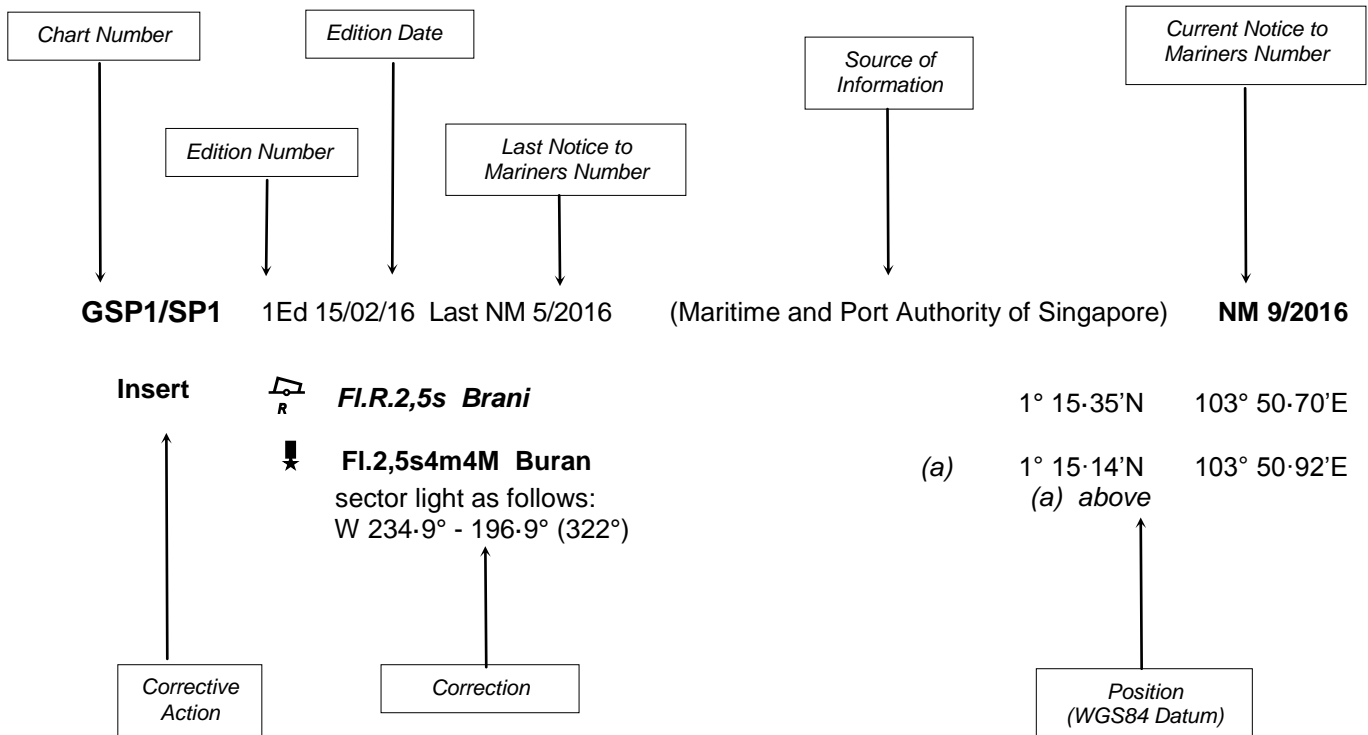
Mariners are requested to notify the Chief Hydrographer, Maritime and Port Authority of Singapore, immediately on the discovery of new dangers or suspected dangers to navigation and of changes or defects in aids to navigation. See Hydrographic Note on back page.

The monthly Singaporean Notices to Mariners can be accessed directly from the MPA website:  
<http://www.mpa.gov.sg/web/portal/home/port-of-singapore/circulars-and-notices/singapore-notices-to-mariners-ntm>

Hydrographic Department  
Maritime and Port Authority of Singapore  
7B Keppel Road  
#20-00 Tanjong Pagar Complex  
Singapore 089055  
Tel: (65) 6325 2027  
Fax: (65) 6226 1076  
Email: [hydrographic@mpa.gov.sg](mailto:hydrographic@mpa.gov.sg)

## EXPLANATION OF FORMAT

The elements of a typical chart correction are explained below.



### Notes:

- Notice to Mariners number followed by:  
**T** indicates a Temporary Notice (eg. **NM 3T/2016**).  
**P** indicates a Preliminary Notice (eg. **NM 4P/2016**).
- Bearings are true reckoned clockwise from 000° to 359° ; those relating to lights are from seaward.
- Heights and elevations are above Mean High Water Springs.

**I**  
**INDEX OF CHARTS AND PUBLICATIONS**

**INDEX OF AFFECTED CHARTS**

DESCRIPTION	NOTICE NO.	PAGE NO.
Index of Singaporean Charts	-	3, 4
Index of Dual-Badged Charts	-	5 to 7
Index of Singapore Electronic Navigational Chart (ENC)	-	8
New Edition Dual Badged Chart	-	9, 10
New Edition Singapore ENC	-	10, 11
Numerical Index to Notices to Mariners of 2016	*46	12
Singaporean Chart GSP1/SP1	*47, *48, *49	13
Singaporean Chart 502	*50, 51	13
Temporary and Preliminary Notices	-	14
Singapore Port Marine Notices/Circulars	*52	15
Singaporean Print-On-Demand (POD) Charts	*53	16
Amendments to Publications	*54	17 to 19
Reprint of Radio Navigational Warnings	-	20
Extract of Admiralty Notices to Mariners for Dual-Badged Charts	-	21
Singapore Electronic Navigational Chart (ENC) Distributors	-	22
Chart Distributors for the Maritime and Port Authority of Singapore Nautical Charts and Publications	-	23

\*Source: Maritime and Port Authority of Singapore

I  
**INDEX OF CHARTS AND PUBLICATIONS**

**INDEX OF NOTICES**

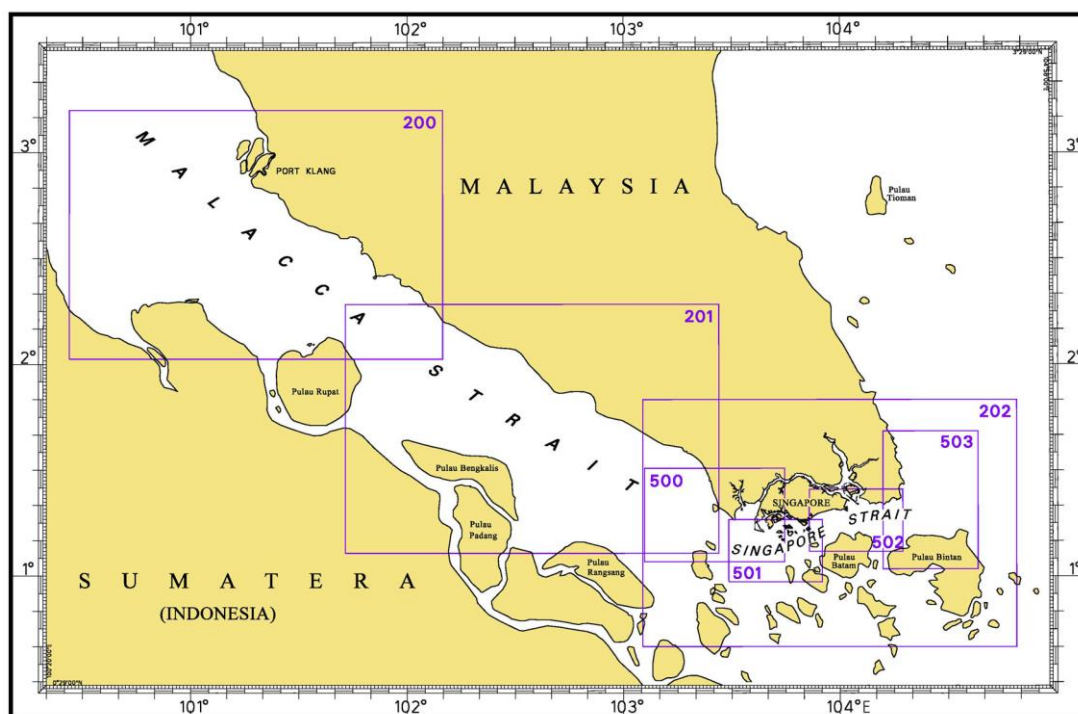
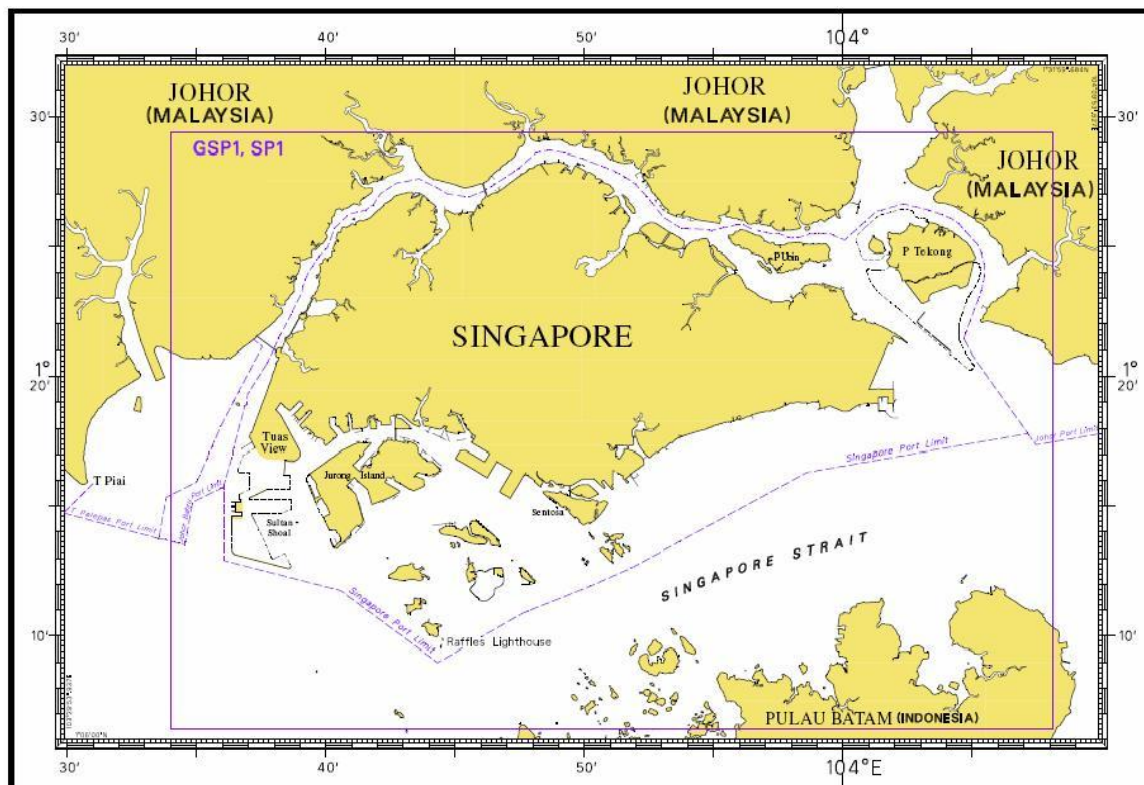
NOTICE NO.	DESCRIPTION	PAGE NO.
-	Index of Singaporean Charts	3, 4
-	Index of Dual-Badged Charts	5 to 7
-	Index of Singapore Electronic Navigational Chart (ENC)	8
-	New Edition Dual Badged Chart	9, 10
-	New Edition Singapore ENC	10, 11
*46	Numerical Index to Notices of Mariners of 2016	12
*47, *48, *49	Singaporean Chart GSP1/SP1	13
*50, 51	Singaporean Chart 502	13
-	Temporary and Preliminary Notices	14
*52	Singapore Port Marine Notices/Circulars	15
*53	Singaporean Print-On-Demand (POD) Charts	16
*54	Amendments to Publications	17 to 19
-	Reprint of Radio Navigational Warnings	20
-	Extract of Admiralty Notices to Mariners for Dual-Badged Charts	21
-	Singapore Electronic Navigational Chart (ENC) Distributors	22
-	Chart Distributors for the Maritime and Port Authority of Singapore Nautical Charts	23

\* Source: Maritime and Port Authority of Singapore

# I

## INDEX OF CHARTS AND PUBLICATIONS

### INDEX OF SINGAPOREAN CHARTS



#### Notes:

Updated Singaporean Charts are available through our Print-On-Demand (POD) Chart Service. For more information, refer to Section III – Navigational Information. These charts can be purchased from our Chart Distributors.

I  
**INDEX OF CHARTS AND PUBLICATIONS**

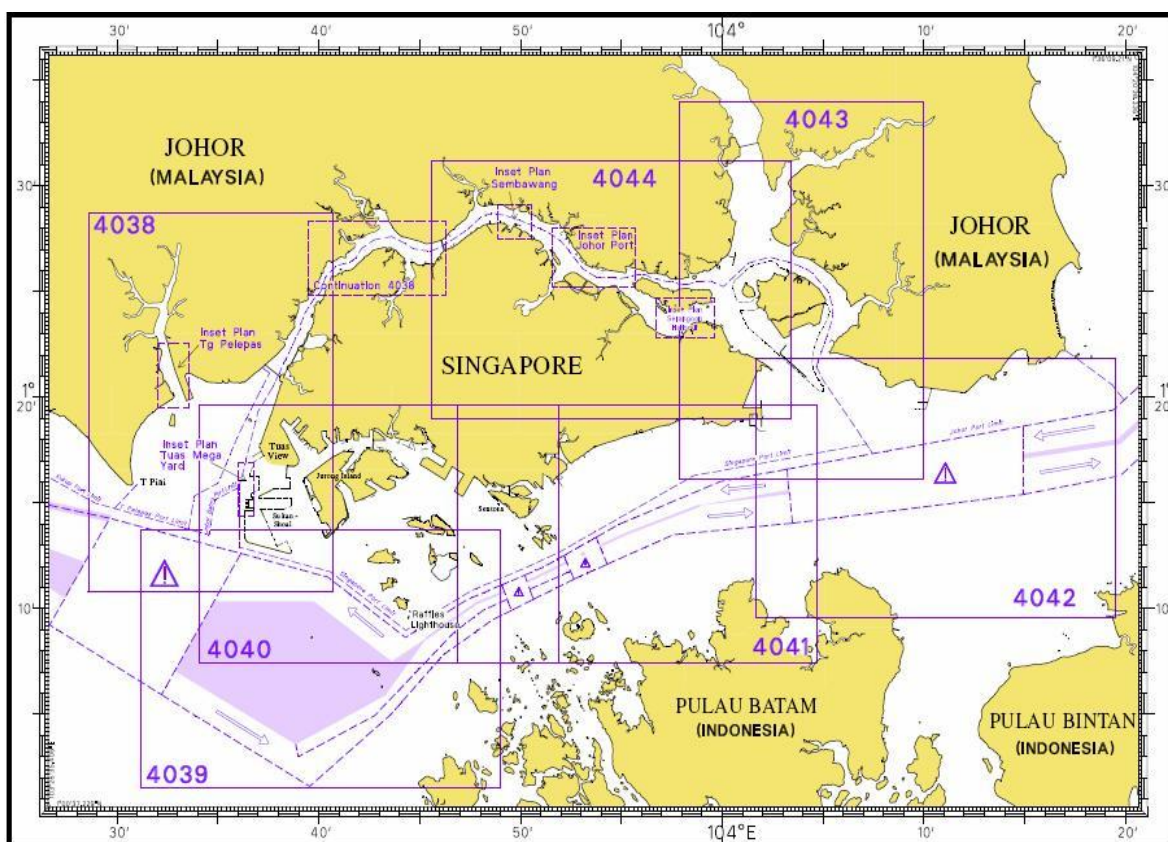
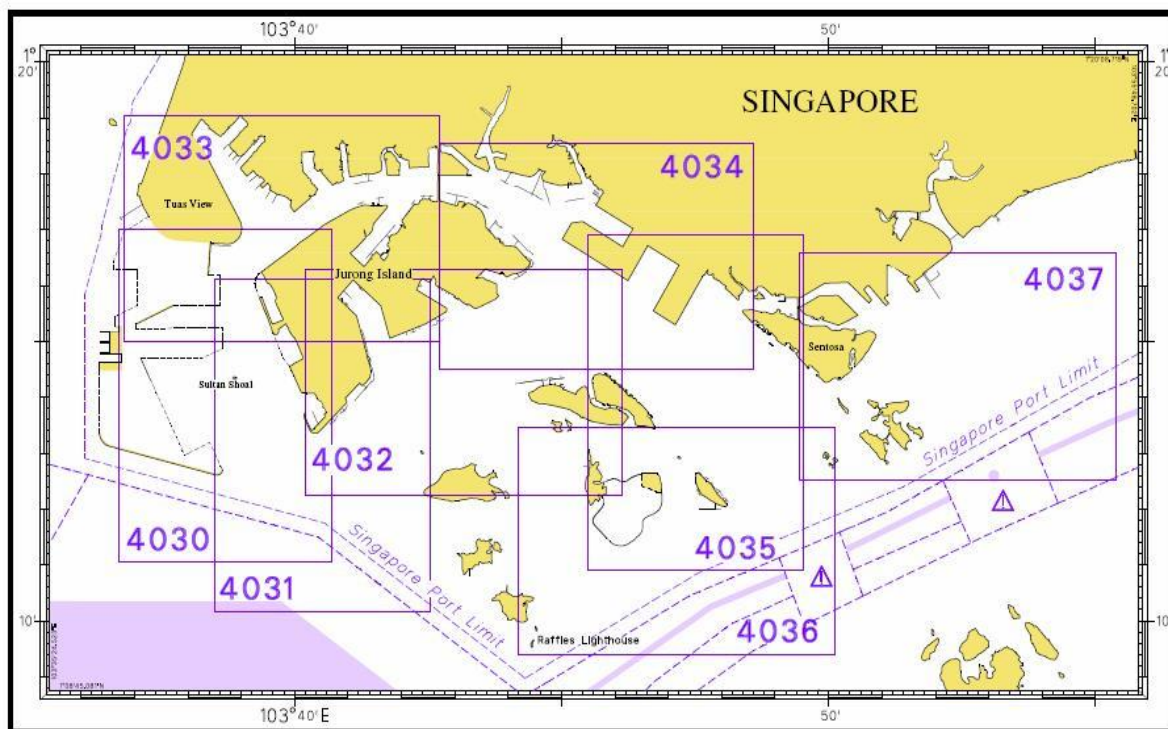
**SINGAPOREAN CHARTS**

<b>Chart No.</b>	<b>Chart Title</b>	<b>Scale 1:</b>	<b>Date Published of Latest Edition</b>
GSP1	Anchorage and Aids to Navigation (with Area Reference)	65 000	15/02/2016
SP1	Anchorage and Aids to Navigation	65 000	15/02/2016
200	Malacca Strait - Port Klang to Tanjung Keling	200 000	01/09/2015
201	Malacca Strait - Tanjung Keling to Western Entrance of Singapore Strait	200 000	15/08/2014
202	Singapore Strait	200 000	26/09/2013
500	Malacca and Singapore Straits – Pulau Pisang to Raffles Lighthouse	75 000	26/09/2013
501	Singapore Strait – Western Part	50 000	01/09/2015
502	Singapore Strait - Eastern Part	50 000	01/09/2015
503	South China Sea - Eastern Approaches and Entrance to Singapore Strait	75 000	15/08/2014
-	Charts for Small Craft – Singapore Port Waters and Approaches	10 000 to 200 000	January 2016
1	<p>Symbols Abbreviations Terms and S-57 Objects used on Singapore Nautical and Electronic Navigational Charts.</p> <p>Available at MPA website:  <a href="http://www.mpa.gov.sg/web/portal/home/publications/charts-symbols-and-abbreviations">http://www.mpa.gov.sg/web/portal/home/publications/charts-symbols-and-abbreviations</a> </p>	-	28/07/2011

# I

## INDEX OF CHARTS AND PUBLICATIONS

### DUAL-BADGED CHARTS





**I**  
**INDEX OF CHARTS AND PUBLICATIONS**

<b>Chart No.</b>	<b>Chart Title</b>	<b>Scale 1:</b>	<b>Date Published of Latest Edition</b>
4030	Port of Singapore West Jurong Anchorages and Temasek Fairway	10 000	17/03/2016
4031	Port of Singapore Western Approaches to Jurong Island	10 000	17/03/2016
4032	Port of Singapore Sinki Fairway	10 000	15/05/2014
4033	Port of Singapore Tuas Bay, West Jurong Channel and Pesek Basin	10 000	17/03/2016
4034	Port of Singapore East Jurong Channel, Pasir Panjang Terminal and West Keppel Fairway	10 000	28/05/2015
4035	Port of Singapore Western Anchorages, Jong Fairway and Cruise Bay	10 000	28/05/2015
4036	Port of Singapore Raffles Lighthouse to The Sisters	10 000	28/05/2015
4037	Port of Singapore Keppel Harbour, Tanjong Pagar Terminal and Approaches	10 000	28/05/2015
4038	Malaysia and Singapore Johor Strait – Western Part	30 000	25/02/2016
4039	Indonesia, Singapore and Malaysia Western Approaches to Main Strait	30 000	24/04/2014
4040	Singapore, Indonesia and Malaysia Tuas View to Pulau Sakijang Bendera (S. John's Island)	30 000	27/08/2015
4041	Singapore and Indonesia Pulau Sebarok to Changi	30 000	27/08/2015



**I**  
**INDEX OF CHARTS AND PUBLICATIONS**

**DUAL- BADGED CHARTS**

<b>Chart No.</b>	<b>Chart Title</b>	<b>Scale 1:</b>	<b>Date Published of Latest Edition</b>
4042	Indonesia, Malaysia and Singapore Changi to Pulau Mungging and Tanjung Buntan to Tanjung Tondang	30 000	24/04/2014
4043	Malaysia and Singapore Kuala Johor and Sungai Johor	30 000	16/06/2016
4044	Singapore and Malaysia Johor Strait - Eastern Part	30 000	16/06/2016

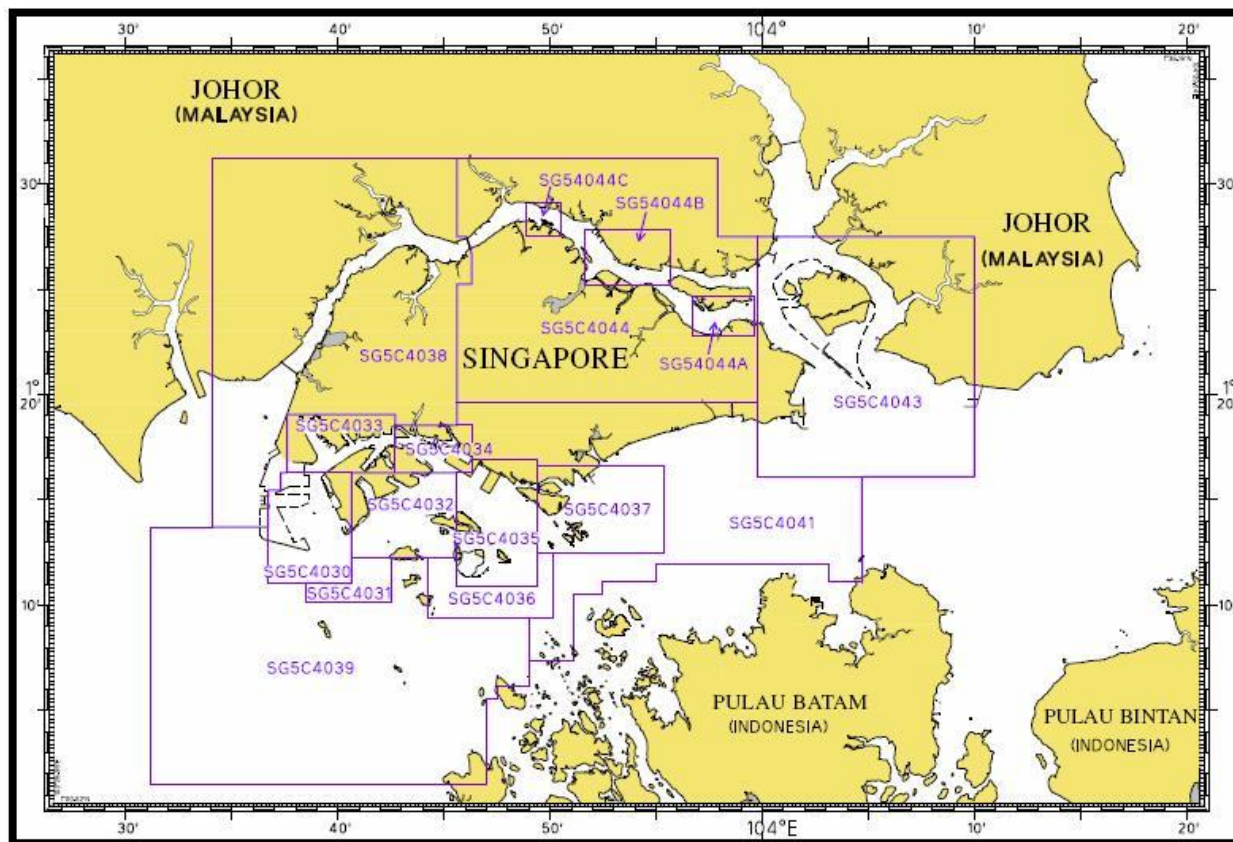
**SINGAPOREAN PUBLICATIONS**

<b>Item</b>	<b>Title</b>	<b>Date Published of Latest Edition</b>
1	Singapore Tide Tables Year 2016	09/09/2015
2	Singapore Port Information 2016/2017	04/01/2016

# I

## INDEX OF CHARTS AND PUBLICATIONS

### INDEX OF SINGAPORE ELECTRONIC NAVIGATIONAL CHART (ENC)



### SINGAPORE ELECTRONIC NAVIGATIONAL CHART (ENC)

ENC Name	ENC Coverage	ENC Edition
SG5C4030	West Jurong Anchorages and Temasek Fairway	9 <sup>th</sup> Edition (17/03/2016)
SG5C4031	Western Approaches to Jurong Island	8 <sup>th</sup> Edition (17/03/2016)
SG5C4032	Sinki Fairway	10 <sup>th</sup> Edition (7/05/2015)
SG5C4033	Tuas Bay, West Jurong Channel and Pesek Basin	9 <sup>th</sup> Edition (17/03/2016)
SG5C4034	East Jurong Channel, Pasir Panjang Terminal and West Keppel Fairway	13 <sup>th</sup> Edition (28/05/2015)
SG5C4035	Western Anchorages, Jong Fairway and Cruise Bay	16 <sup>th</sup> Edition (28/05/2015)
SG5C4036	Raffles Lighthouse to The Sisters	9 <sup>th</sup> Edition (28/05/2015)
SG5C4037	Keppel Harbour, Tanjong Pagar Terminal and Approaches	9 <sup>th</sup> Edition (28/05/2015)
SG5C4038	Johor Strait – Western Part	9 <sup>th</sup> Edition (25/02/2016)
SG5C4039	Western Approaches to Main Strait	8 <sup>th</sup> Edition (27/08/2015)
SG5C4041	Pulau Sebarok to Changi	9 <sup>th</sup> Edition (27/08/2015)
SG5C4043	Kuala Johor	12 <sup>th</sup> Edition (16/06/2016)
SG5C4044	Johor Strait – Eastern Part	12 <sup>th</sup> Edition (16/06/2016)
SG54044A	Serangoon Harbour	3 <sup>rd</sup> Edition (16/06/2016)
SG54044B	Pelabuhan Johor (Johor Port)	3 <sup>rd</sup> Edition (16/06/2016)
SG54044C	Sembawang	3 <sup>rd</sup> Edition (16/06/2016)

The latest edition of the Singapore ENC covering Singapore Waters and their approaches can be found in our monthly Singaporean Notices to Mariners at MPA website: <http://www.mpa.gov.sg/web/portal/home/port-of-singapore/port-operations/charts-tidal-information-aids-to-navigation-hydrography/nautical-charts/singapore-electronic-navigational-chart-enc>

## II NEW PUBLICATIONS

### NEW EDITION DUAL BADGED CHART PUBLISHED ON 16<sup>TH</sup> JUNE 2016

<b>Chart Number</b>	:	4043
<b>Title</b>	:	Malaysia and Singapore Kuala Johor and Sungai Johor
<b>Coverage</b>	:	Lat 01° 16·10' N 01° 34·00' N Long 103° 57·90' E 104° 10·00' E
<b>Scale</b>	:	1 : 30 000
<b>Date Published</b>	:	16 <sup>th</sup> June 2016
<b>Size of Chart</b>	:	748·1 x 1099·6 mm
<b>Remarks</b>	:	This new edition includes updated surveys covering north and south of Pulau Ubin, around Pulau Tekong, Kuala Johor and Eastern Bunkering B Anchorage.

The existing chart of the same number published on 9<sup>th</sup> April 2015 has been superseded.

<b>Chart Number</b>	:	4044
<b>Title</b>	:	Singapore and Malaysia Johor Strait – Eastern Part
<b>Coverage</b>	:	Lat 01° 19·00' N 01° 31·20' N Long 103° 45·60' E 104° 03·40' E
<b>Scale</b>	:	1 : 30 000
<b>Date Published</b>	:	16 <sup>th</sup> June 2016
<b>Size of Chart</b>	:	1100·5 x 749·5 mm
<b>Remarks</b>	:	This new edition includes updated surveys covering north of Sembawang, north of Pulau Punggol Barat and Timor, north of Pulau Ubin, Serangoon Harbour, north of Pulau Tekong and Kuala Johor.

The existing chart of the same number published on 9<sup>th</sup> April 2015 has been superseded.

### NEW EDITION DUAL BADGED CHART TO BE PUBLISHED ON 4<sup>TH</sup> AUGUST 2016

<b>Chart Number</b>	:	4032
<b>Title</b>	:	Port of Singapore Sinki Fairway
<b>Coverage</b>	:	Lat 01° 12·25' N 01° 16·30' N Long 103° 40·20' E 103° 46·13' E
<b>Scale</b>	:	1 : 10 000
<b>Date Published</b>	:	4 <sup>th</sup> August 2016
<b>Size of Chart</b>	:	1100·0 x 746·4 mm
<b>Remarks</b>	:	This new edition includes updated bathymetric and topographic surveys covering portion of Banyan Basin, East Jurong Channel, West Keppel Fairway, Sinki Fairway, north of Pulau Busing, around Terumbu Pempang Laut, Terumbu Pempang Tengah, Terumbu Pempang Darat, around Pulau Hantu, around Terumbu Bemban and Terumbu Raya.

The existing chart of the same number published on 15<sup>th</sup> May 2014 will be superseded.

## II NEW PUBLICATIONS

<b>Chart Number</b>	:	4034
<b>Title</b>	:	Port of Singapore East Jurong Channel, Pasir Panjang Terminal and West Keppel Fairway
<b>Coverage</b>	:	Lat 01° 14·50' N 01° 18·55' N Long 103° 42·70' E 103° 48·60' E
<b>Scale</b>	:	1 : 10 000
<b>Date Published</b>	:	4 <sup>th</sup> August 2016
<b>Size of Chart</b>	:	1094.3 x 746.3 mm
<b>Remarks</b>	:	This new edition includes updated surveys covering East Jurong Channel, Pasir Panjang Terminal Berths P26 to P41, West Keppel Fairway and north of Pulau Bukom, Sinki Fairway and Selat Pandan.
The existing chart of the same number published on 28 <sup>th</sup> May 2015 will be superseded.		

### NEW EDITION SINGAPORE ENC RELEASED ON 16<sup>TH</sup> JUNE 2016

<b>ENC Name</b>	:	SG5C4043
<b>Location</b>	:	Kuala Johor
<b>Coverage</b>	:	Lat 01° 16·10' N 01° 27·50' N Long 103° 59·80' E 104° 10·00' E
<b>Compilation Scale</b>	:	1: 22 000
<b>Date Released</b>	:	16 <sup>th</sup> June 2016
<b>Descriptions</b>	:	This new edition includes updated bathymetric and topographic surveys covering north and south of Pulau Ubin, around Pulau Tekong, Kuala Johor and Eastern Bunkering B Anchorage.
The existing cell of the same name released on 9 <sup>th</sup> April 2015 has been superseded.		

<b>ENC Name</b>	:	SG5C4044
<b>Location</b>	:	Johor Strait – Eastern Part
<b>Coverage</b>	:	Lat 01° 19·60' N 01° 31·20' N Long 103° 45·60' E 103° 59·80' E
<b>Compilation Scale</b>	:	1: 22 000
<b>Date Released</b>	:	16 <sup>th</sup> June 2016
<b>Descriptions</b>	:	This new edition includes updated surveys covering north of Sembawang, north of Pulau Punggol Barat and Timor, north of Pulau Ubin, Serangoon Harbour, north of Pulau Tekong and Kuala Johor.
The existing cell of the same name released on 9 <sup>th</sup> April 2015 has been superseded.		

<b>ENC Name</b>	:	SG54044A
<b>Location</b>	:	Serangoon Harbour
<b>Coverage</b>	:	Lat 01° 22·80' N 01° 24·70' N Long 103° 56·70' E 104° 00·00' E
<b>Compilation Scale</b>	:	1: 12 000
<b>Date Released</b>	:	16 <sup>th</sup> June 2016
<b>Descriptions</b>	:	This new edition includes updated surveys covering Serangoon Harbour.
The existing cell of the same name released on 9 <sup>th</sup> April 2015 has been superseded.		

## II NEW PUBLICATIONS

**ENC Name** : SG54044B  
**Location** : Pelabuhan Johor (Johor Port)  
**Coverage** : Lat 01° 25' 20" N 01° 27' 86" N  
 Long 103° 51' 60" E 103° 55' 70" E  
**Compilation Scale** : 1: 12 000  
**Date Released** : 16<sup>th</sup> June 2016  
**Descriptions** : This new edition includes updated surveys covering north of Pulau Punggol Barat and Timor and north west of Pulau Ubin.

The existing cell of the same name released on 9<sup>th</sup> April 2015 has been superseded.

**ENC Name** : SG54044C  
**Location** : Sembawang  
**Coverage** : Lat 01° 27' 50" N 01° 29' 10" N  
 Long 103° 48' 90" E 103° 50' 50" E  
**Compilation Scale** : 1: 8 000  
**Date Released** : 16<sup>th</sup> June 2016  
**Descriptions** : This new edition includes updated surveys covering north of Sembawang.

The existing cell of the same name released on 9<sup>th</sup> April 2015 has been superseded.

### NEW EDITION SINGAPORE ENC TO BE RELEASED ON 4<sup>TH</sup> AUGUST 2016

**ENC Name** : SG5C4032  
**Location** : Sinki Fairway  
**Coverage** : Lat 01° 25' 250" N 01° 16' 300" N  
 Long 103° 40' 640" E 103° 45' 580" E  
**Compilation Scale** : 1: 8 000  
**Date Released** : 4<sup>th</sup> August 2016  
**Descriptions** : This new edition includes updated bathymetric and topographic surveys covering portion of Banyan Basin, East Jurong Channel, Sinki Fairway, north of Pulau Busing, West Keppel Fairway, around Terumbu Pempang Laut, Terumbu Pempang Tengah, Terumbu Pempang Darat and Pulau Hantu.

The existing cell of the same name released on 7<sup>th</sup> May 2015 will be superseded.

**ENC Name** : SG5C4034  
**Location** : East Jurong Channel, Pasir Panjang Terminal and West Keppel Fairway  
**Coverage** : Lat 01° 16' 300" N 01° 18' 550" N  
 Long 103° 42' 700" E 103° 46' 360" E  
**Compilation Scale** : 1: 8 000  
**Date Released** : 4<sup>th</sup> August 2016  
**Descriptions** : This new edition includes updated surveys covering East Jurong Channel and vicinity off Retan Darat Channel.

The existing cell of the same name released on 28<sup>th</sup> May 2015 will be superseded.

## II NOTICES TO MARINERS AND CHART CORRECTIONS

(NM 46/2016) NUMERICAL INDEX TO SINGAPOREAN NOTICES TO MARINERS OF 2016 (1 TO 45)


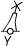


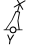


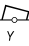
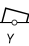
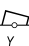





MONTH	SINGAPOREAN NOTICES TO MARINERS NO.
JANUARY 2016	1 to 6
FEBRUARY 2016	7 to 15
MARCH 2016	16 to 21
APRIL 2016	22 to 29
MAY 2016	30 to 36
JUNE 2016	37 to 45

---

CHART NO.	PUBLISHED	YEAR	SINGAPOREAN NOTICES TO MARINERS NO.
GSP1, SP1	1 Ed 15/02/16	2016	22-23-24-25-37-38-39-40
200	4 Ed 1/09/15	2016	30-31-41-42
201	5 Ed 15/08/14	2016	-
202	7 Ed 26/09/13	2016	3-7-8-16-17-32
500	7 Ed 26/09/13	2016	3-7
501	7 Ed 1/09/15	2016	9-10-23-24
502	7 Ed 1/09/15	2016	9-10-23-24-25-26-33
503	5 Ed 15/08/14	2016	17-32

---

## II NOTICES TO MARINERS AND CHART CORRECTIONS

<b>GSP1/SP1</b>	1Ed 15/02/16 Last NM 40/2016	(Maritime and Port Authority of Singapore)	<b>NM 47/2016</b>
<b>Replace</b>	 <i>Fl(2)Y.8s</i> with  <i>Fl(2)Y.8s</i>	1°21.86'N 103°38.44'E	
		(Maritime and Port Authority of Singapore)	<b>NM 48/2016</b>
<b>Delete</b>	 <i>Fl(2+1)G.10s, Merawang</i>	1°19.30'N 103°37.01'E	
		(Maritime and Port Authority of Singapore)	<b>NM 49/2016</b>
<b>Insert</b>	 <i>Fl.Y.6s, Hyflx-1</i>	1°18.23'N 103°37.22'E	
	 <i>Fl.Y.4s, Hyflx-2</i>	1°18.06'N 103°37.13'E	
<hr/>			
<b>502</b>	7Ed 1/09/15 Last NM 33/2016	(Maritime and Port Authority of Singapore)	<b>NM 50/2016</b>
<b>Insert</b>	 <i>Fl.Y.2s, TK-MB-1</i>	1°20.27'N 104°04.73'E	
	 <i>Fl.Y.2s, TK-MB-2</i>	1°20.40'N 104°04.59'E	
		(Malaysia Marine Department Notice No. 32T/2015)	<b>NM 51/2016</b>
<b>Insert</b>	dashed line, joining:	(a) 1°20.52'N 104°08.16'E (shore)	
		(b) 1°19.94'N 104°07.80'E	
		(c) 1°19.65'N 104°07.80'E	
		(d) 1°19.65'N 104°08.30'E	
		(e) 1°20.49'N 104°08.30'E (shore)	
	legend, 'Works in progress (2016)' within:	(a)-(e) above	
<b>Insert</b>	 <i>Fl.Y</i>	(b) above	
	 <i>Fl.Y</i>	(c) above	
	 <i>Fl.Y</i>	(d) above	
		(Malaysia Marine Department Notice No. 53/2016)	
<b>Insert</b>	 <i>Fl.G.3s, MOLF1</i>	1°19.88'N 104°08.16'E	
	 <i>Fl.R.3s, MOLF2</i>	1°19.88'N 104°07.96'E	
	 <i>Fl(2)G.10s, MOLF3</i>	1°20.06'N 104°08.23'E	
	 <i>Fl(2)R.10s, MOLF4</i>	1°20.13'N 104°08.06'E	
	 <i>Fl.Y.5s, MOLFSY</i>	1°20.34'N 104°08.35'E	



**II**  
**TEMPORARY AND PRELIMINARY NOTICES**

NIL

### III NAVIGATIONAL INFORMATION

#### \*(NM 52/2016) SINGAPORE PORT MARINE NOTICES/CIRCULARS

The Port Marine Notices/Circulars shortlisted below would be of particular interest to mariners. Details and complete list of Port Marine Notices/Circulars are available at this link: <http://www.mpa.gov.sg/web/portal/home/port-of-singapore/circulars-and-notices>

<b>PMN No.</b>	<b>Subject</b>
3/2016	Works at Tuas Terminal Phase 1
4/2016	Construction of jetties at Tanah Merah staging ground
23/2016	Upgrading works at Jurong Terminal Berth J10
26/2016	Caisson towing operations at Tuas Reclamation Area
30/2016	Reclamation at Pulau Tekong
31/2016	Mooring and unmooring of vessels off Pulau Tekong
32/2016	Reclamation work at western part of Tuas View extension
37/2016	Reclamation work off Temasek Fairway, west of Jurong Island
38/2016	Mooring and unmooring of vessels off Jurong Island, off Temasek Fairway
40/2016	Seawall opening and submarine cable diversion works off Ayer Merbau Basin and Selat Pandan
43/2016	Reclamation work at Tuas View, off Temasek Fairway
62/2016	Maintenance dredging work at Sungei Pandan

---

<b>PMC No.</b>	<b>Subject</b>
8/2016	Persons authorised to supply water to ocean going vessels and harbour craft in port
9/2016	Revised reporting procedures for notification of arrival at Singapore for vessels less than 500GT

---

### III NAVIGATIONAL INFORMATION

#### \*(NM 53/2016) SINGAPOREAN PRINT-ON-DEMAND (POD) CHARTS

Print-On-Demand (POD) Charts are the most up-to-date paper nautical charts printed for navigational use. These nautical charts are produced in accordance with the International Hydrographic Organisation (IHO) chart specifications. All Singaporean Charts are continually updated to the latest Notices to Mariners before they are printed and sold to users.

These POD Charts include GSP1, SP1, 200, 201, 202, 500, 501, 502 and 503.

#### BENEFITS TO OUR CUSTOMERS

##### **Convenience**

Customers need not make numerous hand corrections to the nautical charts before use. In addition the updated POD Charts are more accurate and reliable than offset printed charts with hand corrections.

##### **Clarity**

Clarity in the presentation of updated information as compared to non-POD printed charts, where in some cases there are several overlapping corrections over existing information.

##### **Coverage**

The POD Charts cover the Straits of Malacca and Singapore, from One Fathom Bank to Horsburgh Lighthouse.

---

\*Source: Maritime and Port Authority of Singapore

### III AMENDMENTS TO PUBLICATIONS

\*(NM 54/2016) UPDATING OF PUBLICATION "SINGAPORE PORT INFORMATION 2016/2017"

#### CHARACTERISTICS OF AIDS TO NAVIGATION

1. Page 131

##### WEST JOHOR STRAIT

Delete the following:

Name Of Beacon/Buoy	Position Lat. N Long. E Deg Min	Structure, Colour & Shape	Light Characteristic	Owner
Merawang Buoy	01°19.297' 103°37.014'	Green conical with one red horizontal band	Fl(2+1)G.10s	DHI

2. Page 132

##### WEST JOHOR STRAIT

Amend the following:

Name Of Beacon/Buoy	Position Lat. N Long. E Deg Min	Structure, Colour & Shape	Light Characteristic	Owner
PL3 Buoy	01°21.863' 103°38.441'	Yellow pillar with 'X' topmark	Fl(2).Y.8s	DSTA

##### TUAS VIEW EXTENSION

Insert the following:

Name Of Beacon/Buoy	Position Lat. N Long. E Deg Min	Structure, Colour & Shape	Light Characteristic	Owner
Hyflx-1	01°18.231' 103°37.222'	Yellow pillar with 'X' topmark	Fl.Y.6s	Hyflux
Hyflx-2	01°18.063' 103°37.132'	Yellow pillar with 'X' topmark	Fl.Y.4s	Hyflux

Page 154

3. EAST JOHOR STRAIT

Amend the following:

Name Of Beacon/Buoy	Position Lat. N Long. E Deg Min	Structure, Colour & Shape	Light Characteristic	Owner
City Gas Light - on jetty	01°28.266' 103°48.470'	White triangle point downward with black strip in the centre on white metal frame work	Fl.Y.10s	City Gas Pte Ltd
City Gas Light - on dolphin	01°28.292' 103°48.437'	White triangle point downward with black strip in the centre on white metal frame work	Fl.Y.8s	City Gas Pte Ltd

### III AMENDMENTS TO PUBLICATIONS

4. Page 158

#### PULAU TEKONG

Insert the following:

Name Of Beacon/Buoy	Position Lat. N Long. E Deg Min	Structure, Colour & Shape	Light Characteristic	Owner
TK-MB-1	01°20.266' 104°04.727'	Yellow drum	Fl.Y.2s	Santarli
TK-MB-2	01°20.394' 104°04.589'	Yellow drum	Fl.Y.2s	Santarli
TK-MB-3	01°22.008' 104°02.667'	Yellow drum	Fl.Y.4s	Santarli
TK-MB-4	01°22.133' 104°02.521'	Yellow drum	Fl.Y.4s	Santarli
TK-MB-5	01°22.298' 104°02.312'	Yellow drum	Fl.Y.6s	Santarli
TK-MB-6	01°22.433' 104°02.158'	Yellow drum	Fl.Y.6s	Santarli

#### WHARVES AND BERTHS

5. Page 163 – item 7

#### JURONG ISLAND – (SLNG TERMINAL)(1°14.0'N, 103°40.2'E)

Insert the following:

Berth	Length of Berth	Depth Alongside (Year Surveyed)	Controlling Depth In Approaches
OSLN 1	420m	17.8m (2013)	16.0m
OSLN 2	230m	13.2m (2013)	16.0m
OSLN 3	400m	13.6m (2013)	15.5m

6. Page 163 – item 8

#### JURONG ISLAND – (HELIOS TERMINAL CORPORATION PTE LTD)(1°13.6'N, 103°40.4'E)

Amend the following:

Berth	Length of Berth	Depth Alongside (Year Surveyed)	Controlling Depth In Approaches
OHT1 } OHT2 }	372m	18.5m (2007)	16.0m
OHT3	35.8m	14.7m (2007)	16.0m
OHT4 } OHT5 } OHT6 }	410.8m	18.3m (2007)	16.0m

### III AMENDMENTS TO PUBLICATIONS

7. Page 177 and 178 – Item 43

**BRANI TERMINAL (PSA SINGAPORE TERMINALS)(1°15.7'N, 103°50.2'E)**

**Amend** the following:

Berth	Length of Berth	Depth Alongside (Year Surveyed)	Controlling Depth In Approaches
B6	320m	15.0m (2013)	<b>15.5m</b>
B7	320m	15.0m (2013)	<b>15.5m</b>
B8	330m	15.0m (2013)	<b>15.5m</b>

8. Page 187 – Item 6

**DOCKS AND REPAIR BERTHS**

**Amend** the following:

**TANJONG GUL (KEPPEL SINGMARINE SHIPYARD LTD)(1°17.60'N, 103°40.44'E)**

**Amend** the following:

Dry Dock	Depth	Length	Width	Controlling Depth In Approaches
Floating Dock 1	7.2m	190m	33m	<b>6.1m</b>
Floating Dock 2	4.6m	114m	27m	<b>6.1m</b>
Floating Dock 4	6.0m	158m	23m	<b>6.1m</b>

---

\*Source: Maritime and Port Authority of Singapore

**IV**  
**REPRINT OF RADIO NAVIGATIONAL WARNINGS**

The following Radio Navigational Warnings have been shortlisted, as they would be of particular interest to mariners.

TT175

VESSELS IN EAST JOHOR STRAIT ARE ADVISED TO NAVIGATE WITH PARTICULAR ALERTNESS AND CAUTION WHEN NEAR THE PROJECT AREAS OFF PULAU TEKONG, CHANGI AND MALANG PAPAN AS SHALLOW WATER AREAS EXIST. VESSELS ARE REMINDED TO PROCEED AT A SAFE SPEED AND MAINTAIN A PROPER LOOK-OUT, PARTICULARLY FOR TUGS AND BARGES NAVIGATING NEAR THE PROJECT AREAS AND PASSENGER FERRIES CROSSING BETWEEN CHANGI AND PULAU TEKONG AND VICINITY OF PASIR GUDANG.

TT273

ALL VESSELS ARE ADVISED TO NAVIGATE WITH CAUTION, COMPLY WITH THE INTERNATIONAL COLLISION REGULATIONS, MAINTAIN VHF RADIO WATCH AND LISTEN TO TRAFFIC INFORMATION WHEN NAVIGATING IN THE SINGAPORE STRAIT AND PORT WATERS. MARINERS ARE ALSO ADVISED TO KEEP A GOOD LOOKOUT OF FREQUENT FERRIES CROSSING THE SINGAPORE STRAIT.

TT327

SAFE WATER MARK BUOY LFL.10S IN POSITION 01-03.01N 103-39.00E HAS BEEN REMOVED FOR MAINTENANCE.

TT328

RACON DELTA BUOY Q(6)LFL.15S IN POSITION 01-03.781N 103-38.77E HAS BEEN REMOVED FOR MAINTENANCE.

TT961

VESSELS INTENDING TO CROSS THE TRAFFIC SEPARATION SCHEME (TSS) OR PRECAUTIONARY AREAS IN THE SINGAPORE STRAIT DURING THE HOURS OF DARKNESS ARE RECOMMENDED TO DISPLAY THE NIGHT SIGNALS CONSISTING OF 3 ALL ROUND GREEN LIGHTS IN A VERTICAL LINE AS DETAILED IN MARITIME AND PORT AUTHORITY OF SINGAPORE'S PORT MARINE CIRCULAR, 02 OF 2011 DATED 30 MAY 2011.

SR123 (AMENDED ON 200330Z)

SEA ROBBERIES ARE REPORTED IN THE SINGAPORE STRAIT, ALL VESSELS ARE REMINDED TO MAINTAIN A PROPER LOOK-OUT AND REPORT ANY SUSPICIOUS CRAFT TO VTIS SINGAPORE.

-----  
ISSUED BY SINGAPORE PORT OPERATIONS CONTROL CENTRE (as at 26<sup>th</sup> Jun 2016)



**V**  
**EXTRACT OF ADMIRALTY NOTICES TO MARINERS**  
**FOR DUAL-BADGED CHARTS**

**These notices can also be accessed directly from UKHO Website:**

<http://www.ukho.gov.uk/ProductsandServices/MartimeSafety/Pages/NMPublic.aspx>

**3314 SINGAPORE - Sinki Fairway SW and East Jurong Channel - Light-beacon. Submarine pipeline.**

**Legend**

Source: Maritime and Port Authority of Singapore

**Chart 4032** [ previous update 1793/16 ] WGS84 DATUM

Insert symbol, radar reflector, at light-beacon 1° 13'·346N., 103° 41'·585E.

**Chart 4034** [ previous update 2506/16 ] WGS84 DATUM

Insert submarine pipeline, , joining (a) 1° 18'·082N., 103° 43'·837E. (shore)  
 (b) 1° 17'·055N., 103° 43'·587E. (shore)  
 legend, **Water (buried)**, along: (a)-(b) above

**Chart 4039** [ previous update 204/16 ] WGS84 DATUM

Insert symbol, radar reflector, at light-beacon 1° 13'·35N., 103° 41'·58E.

**Chart 4040** [ previous update 2506/16 ] WGS84 DATUM

Insert symbol, radar reflector, at light-beacon 1° 13'·35N., 103° 41'·58E.

**3315 SINGAPORE - Tanah Merah Ferry Terminal SW and Kuala Johor - Buoyage. Depth.**

Source: Maritime and Port Authority of Singapore

**Chart 4041** [ previous update 2506/16 ] WGS84 DATUM

Delete  **Fl.Y.4s NTU-TM1** 1° 18'·68N., 103° 59'·18E.

**Chart 4042** [ previous update 3212/16 ] WGS84 DATUM

Insert  **Fl.Y.2s TK-MB-2** 1° 20'·40N., 104° 04'·59E.  
 **Fl.Y.2s TK-MB-1** 1° 20'·27N., 104° 04'·73E.

Delete depth, **14<sub>9</sub>**, and associated 15m contour 1° 20'·74N., 104° 04'·02E.

---

Updated to Admiralty Notices to Mariners Edition No. 26 of 2016 dated 30<sup>th</sup> June 2016

## **SINGAPORE ENC DISTRIBUTORS**

ENC DISTRIBUTOR	ADDRESS	TEL/FAX /EMAIL/WEBSITE
ChartWorld GmbH	Atlantic Haus, Zirkusweg 1 D-20359 Hamburg Germany	Tel: +49 40 853 58 6942 Fax: +49 40 853 58 6949 Email: sales@chartworld.com
ChartWorld Asia Pacific Pte Ltd.	Frontech Centre 07-01 15 Jalan Kilang Barat Singapore 159357	Tel: +65 6513 3500  Website: <a href="http://www.chartworld.com">http://www.chartworld.com</a> <a href="http://www.ecdis-as-a-service.com">http://www.ecdis-as-a-service.com</a>
Global Navigation Solutions Pte Ltd	2 Boon Leat Terrace #05-02/03/04, Harbourside Building 2 Singapore 119844	Tel: +65 6270 4060 Fax: +65 6276 3858 Email: sg.info@gnsworldwide.com Website: <a href="http://www.gnsworldwide.com">www.gnsworldwide.com</a>
Maritime Information Systems (MARIS)	52, Telok Blangah Road #01-06 Telok Blangah House Singapore 058809	Tel: +65 6276 1472 Fax: +65 6276 1473 Email: : support@maris.sg Website: <a href="http://www.maris.no">http://www.maris.no</a>
Maritime Information Systems AS (MARIS)	Danholmen 25, 3128 Notteroy Norway	Tel: +47 33 30 42 50 Fax: +47 33 30 42 51 Email: : sales@maris.no Website: <a href="http://www.maris.no">http://www.maris.no</a>
Motion Smith	15 Jalan Kilang Barat #08-01/05 Frontech Centre Singapore 159357	Tel: +65 6220 5098 Fax: +65 6225 4902 Email: sales@motsmith.com Website: <a href="http://www.motsmith.com">http://www.motsmith.com</a>
Transas Marine Pacific Pte Ltd	Cyber Centre 16/18 Jalan Kilang Barat Off Jalan Bukit Merah Singapore 159358	Tel: +65 6271 0200 Fax: +65 6271 7300 Email: navigation.asia@transas.com Website: <a href="http://www.transas.com">http://www.transas.com</a>
Japan Hydrographic Association (Electronic Charts Division)	Daiichi Sogo Bldg, 6F 1-6-6, Hanedakuko, Ota-ku Tokyo 144-0041, Japan	Tel: +81 3 5708 7093 Fax: +81 3 5708 7094 Email: shimizu-6kj@jha.jp Website: <a href="http://www.jha.or.jp/en/jha/">http://www.jha.or.jp/en/jha/</a>
Jeppesen Norway AS	P.O Box 212 , N-4371 Egersund Norway	Tel: +47 51 46 4700 Fax: +47 51 46 4701 Email: license.marine@jeppesen.com Website : <a href="http://www.jeppesen.com/marine">http://www.jeppesen.com/marine</a>
PRIMAR STAVANGER	Lervigsveien 36, P.O Box 60 N-4001 Stavanger, Norway	Tel: +47 51 93 9500 Fax: +47 51 93 9501 Email: sales@ecc.no Website : <a href="http://www.primar.no">http://www.primar.no</a>
The United Kingdom Hydrographic Office	Admiralty Way, Taunton Somerset, TA1 2DN United Kingdom	Tel: +44 1823 33 7900 Fax: +44 1823 28 4077 Emails: ENCS.SalesReports@ukho.gov.uk Website: <a href="http://www.ukho.gov.uk">http://www.ukho.gov.uk</a>

**Chart Distributors for the Maritime and Port Authority of Singapore**  
**Nautical Charts and Publications**

Please approach any of the Chart Distributors to purchase the Singapore Nautical Charts and Publications.

<b>CHART DISTRIBUTORS</b>	<b>ADDRESS</b>	<b>TEL/FAX/EMAIL/WEBSITE</b>
Chartco (Singapore) Pte Ltd	896 Dunearn Road #03-05 Sime Darby Centre Singapore 589472	Tel: +65 6545 9880 Ext 65285 Fax: +65 6545 8892 Email: leslie.khoo@chartco.com Website: <a href="http://www.chartco.com">http://www.chartco.com</a>
Cornes (Singapore) Pte Ltd	10 Anson Road #23-06/6A International Plaza Singapore 079903	Tel: +65 6223 8320 Fax: +65 6223 8321 Email: sales9850@cspl.sg Website: <a href="http://www.cornes-charts.com">http://www.cornes-charts.com</a>
E.W. Liner Charts & Publications Pte Ltd	100, Pasir Panjang Road #05-10 Singapore 118518	Tel: +65 6323 0773 Fax: +65 6323 0775 Email: sales@ewliner.com Website: <a href="http://www.ewliner.com">http://www.ewliner.com</a>
Global Navigation Solutions Pte Ltd	2 Boon Leat Terrace #05-02/03/04, Harbourside Building 2 Singapore 119844	Tel: +65 6270 4060 (After office hours: +65 9632 5268) Fax: +65 6276 3858 Email: sg.info@gnsworldwide.com Website: <a href="http://www.gnsworldwide.com">www.gnsworldwide.com</a>
Motion Smith	15 Jalan Kilang Barat #08-01/05 Frontech Centre Singapore 159357	Tel: +65 6220 5098 (After office hours: +65 8163 9993) Fax: +65 6225 4902 Email: sales@motsmith.com Website: <a href="http://www.motsmith.com">http://www.motsmith.com</a>

## **HYDROGRAPHIC NOTE - Instructions**

1. Mariners are requested to notify the Chief Hydrographer, Maritime and Port Authority of Singapore, when new or suspected dangers to navigation are discovered, changes are observed in aids to navigation or where corrections to nautical publications may be necessary. Reports, which cannot be confirmed or are lacking in certain details should not be withheld.
2. Any ambiguities of time, positioning and depth should be stressed and any firm expectation of being able to check the information provided on a following voyage should be mentioned.
3. Mariners using satellite position fixing systems, eg. GPS, should provide details of equipment and datum used (where applicable). Where bearings (true or magnetic) are taken visually or by radar to fix a position, it should include more than two objects in order to provide a check on its accuracy. A position may also be defined by bearing and distance from a conspicuous object eg. beacon, lighthouse etc.
4. The note should include a tracing or a digital image of the chart used and the details should be clearly marked.
5. Echo sounders frequently register greater depths than the advertised maximum depth for the equipment, eg. a trace appearing at 50 metres may be in fact be 550 metres or even 1050 metres for equipment whose maximum depth is 500 metres. Erroneous depths caused by 2nd transmission error can usually be recognised by the following:
  - (a) the tracing being weaker than normal for the depth registered,
  - (b) the trace appearing to pass through the transmission line,
  - (c) the feathery nature of the trace.
6. Upon receipt of a hydrographic note, a Notice to Mariners may be issued. The sender's vessel or name is quoted as the source unless the same information is also received in foreign Notices to Mariners.
7. Reports of shoals, uncharted dangers and defects in aids to navigation may also be made to the appropriate Singapore Port Operations Control Centre on VHF Channels 10, 12, 14, 68 or 73.

## HYDROGRAPHIC NOTE

To:

Chief Hydrographer  
Maritime and Port Authority of Singapore  
7B Keppel Road #20-00 Tanjong Pagar Complex  
Singapore 089055

Tel : (65) 6325 2027  
Fax : (65) 6226 1076  
Email : [hydrographic@mpa.gov.sg](mailto:hydrographic@mpa.gov.sg)

### **Sender's Contact Details** :

Date : .....

Name of Vessel : .....

Address of Sender : .....

Tel : ..... Fax : .....

Email : .....

### **Nature of Observation** :

General Location : .....

Subject : .....

Position : Lat. .... Long. ....

Charts Used : .....

Date & Time of Observation : .....

Details : .....

.....

.....

Attachment : .....

### **Equipment Used** :

Type of Position Fixing : ..... GPS / DGPS ..... Others : .....

Type of Echo Sounder : .....

Name and Signature : .....

Ship's/Company's Stamp : .....