



SINGAPOREAN NOTICES TO MARINERS

SECTION	CONTENT	Page
I	Affected Charts & Publications	1
II	New Charts & Publications	3
	Notices to Mariners and Chart Corrections	8
	Temporary and Preliminary Notices	10
III	Navigational Information	11
	Amendments to Publications	12
IV	Reprint of Maritime Safety Information	13
V	Extract of Admiralty Notices to Mariners for Dual-Badged Charts	15

The monthly Notices to Mariners contain information required to keep charts and publications published by the Hydrographic Department, Maritime and Port Authority of Singapore up-to-date.

Mariners are requested to notify the Chief Hydrographer, Maritime and Port Authority of Singapore, immediately of the discovery of new or suspected dangers to navigation, observed changes to aids to navigation and ways Singaporean Charts and Publications can be improved. The Hydrographic Note on the back page should be used for this purpose.

Detailed information of charts and publications (coverage of charts, latest editions and distributors) are available on the Maritime and Port Authority Website: www.mpa.gov.sg

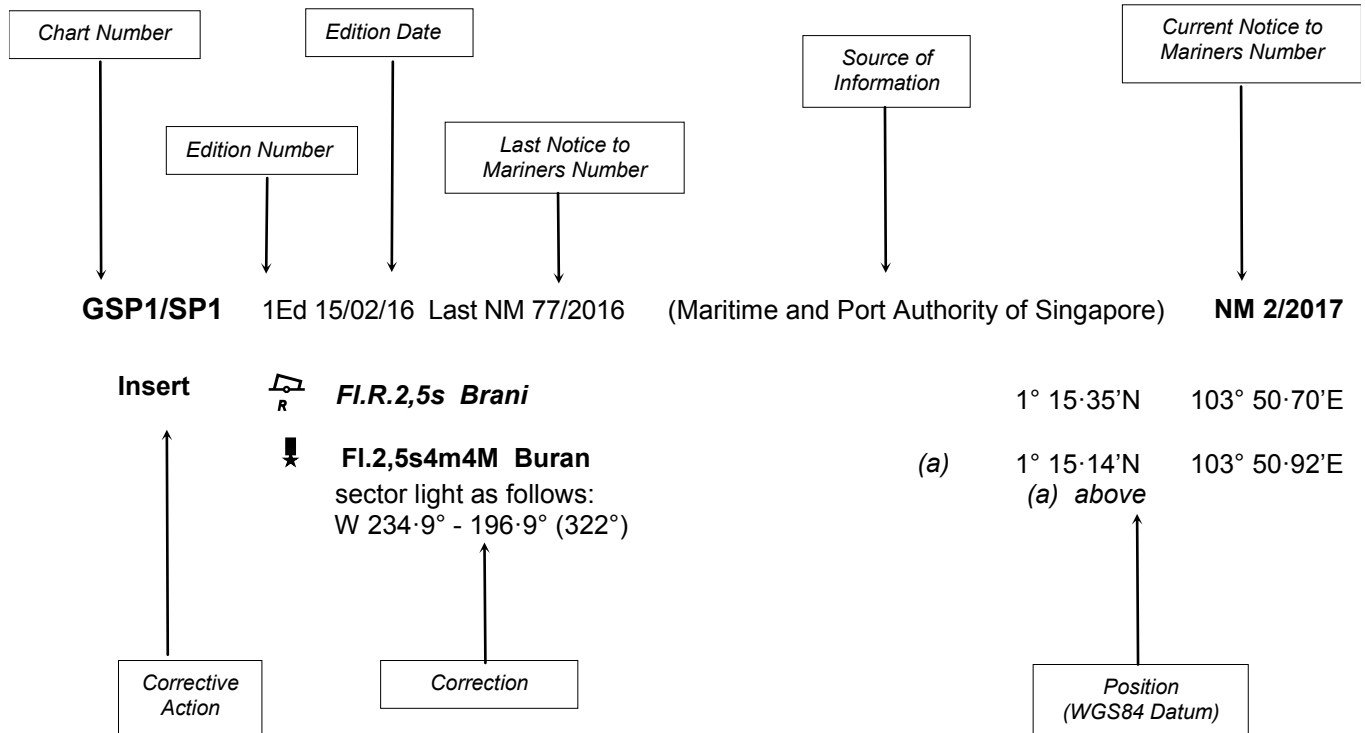
- [Singaporean Notice to Mariners](#)
- [Singaporean Charts](#)
- [Dual-Badged Charts](#)
- [Singapore ENC](#)
- [Malacca and Singapore Straits ENC](#)
- [Singapore Port Information](#)
- [Singapore Tide Tables](#)

Contact information:

Hydrographic Department
Maritime and Port Authority of Singapore
7B Keppel Road
#20-00 Tanjong Pagar Complex
Singapore 089055
Tel : (65) 6325 2027
Fax : (65) 6226 1076
Email : hydrographic@mpa.gov.sg

EXPLANATION OF FORMAT

The elements of a typical chart correction are explained below.



Notes:

- Notice to Mariners number followed by:
T indicates a Temporary Notice (eg. **NM 3T/2017**).
P indicates a Preliminary Notice (eg. **NM 4P/2017**).
- Bearings are true reckoned clockwise from 000° to 359°; those relating to lights are from seaward.
- Heights and elevations are above Mean High Water Springs.

I
AFFECTED CHARTS AND PUBLICATIONS

INDEX OF AFFECTED CHARTS

DESCRIPTION	NOTICE NO.	PAGE NO.
New Charts and Publications	-	3 to 7
Numerical Index to Notices to Mariners of 2017	*61	8
Singaporean Chart GSP1/SP1	*62, 63, 64	9
Singaporean Chart 200	65	9
Singaporean Chart 201	65	9
Singaporean Chart 501	64	9
Singaporean Chart 502	64, 66	9
Temporary and Preliminary Notices	67P	10
Singapore Port Marine Notices/Circulars	*68	11
Amendments to Publications	*69	12
Reprint of Maritime Safety Information	-	13, 14
Extract of Admiralty Notices to Mariners for Dual-Badged Charts	-	15 to 19

*Source: Maritime and Port Authority of Singapore

I
AFFECTED CHARTS AND PUBLICATIONS

INDEX OF NOTICES

NOTICE NO.	DESCRIPTION	PAGE NO.
-	New Charts and Publications	3 to 7
*61	Numerical Index to Notices to Mariners of 2017	8
*62, 63, 64	Singaporean Chart GSP1/SP1	9
65	Singaporean Chart 200	9
65	Singaporean Chart 201	9
64	Singaporean Chart 501	9
64, 66	Singaporean Chart 502	9
67P	Temporary and Preliminary Notices	10
*68	Singaporean Port Marine Notices/Circulars	11
*69	Amendment to Publications	12
-	Reprint of Maritime Safety Information	13, 14
-	Extract of Admiralty Notices to Mariners for Dual-Badged Charts	15 to 19

*Source: Maritime and Port Authority of Singapore

II NEW CHARTS AND PUBLICATIONS

NEW EDITION DUAL BADGED CHARTS PUBLISHED ON 15TH JUNE 2017

Chart Number	:	4042
Title	:	Indonesia, Singapore and Malaysia Changi to Pulau Mungging and Tanjung Buntan to Tanjung Tondang
Coverage	:	Lat 01° 09·55' N 01° 21·75' N Long 104° 01·70' E 104° 19·50' E
Scale	:	1 : 30 000
Date Published	:	15 th June 2017
Size of Chart	:	1100.6 x 749.5 mm
Description	:	This new edition includes updated surveys covering Eastern Bunkering A Anchorage, Changi General Purposes Anchorage and south of Pulau Tekong.
		The existing chart of the same number published on 24 th April 2014 has been superseded.

Chart Number	:	4043
Title	:	Malaysia and Singapore Kuala Johor and Sungai Johor
Coverage	:	Lat 01° 16·10' N 01° 34·00' N Long 103° 57·90' E 104° 10·00' E
Scale	:	1 : 30 000
Date Published	:	15 th June 2017
Size of Chart	:	748.1 x 1099.6 mm
Description	:	This new edition includes updated surveys covering North of Pulau Ubin, around Pulau Tekong, Changi General Purposes Anchorage and Eastern Anchorages.
		The existing chart of the same number published on 16 th June 2016 has been superseded.

II NEW CHARTS AND PUBLICATIONS

NEW EDITION DUAL BADGED CHARTS PUBLISHED ON 15TH JUNE 2017

Chart Number	:	4044
Title	:	Singapore and Malaysia Johor Strait - Eastern Part
Coverage	:	Lat 01° 19·00' N 01° 11·20' N Long 103° 45·60' E 104° 03·40' E
Scale	:	1 : 30 000
Date Published	:	15 th June 2017
Size of Chart	:	1100.5 x 749.5 mm
Description	:	This new edition includes updated surveys covering Denman Shoal, north of Pulau Punggol Barat, north and south-west of Pulau Ubin, area around Pulau Tekong and Kuala Johor.

The existing chart of the same number published on 15th June 2016 has been superseded.

II NEW CHARTS AND PUBLICATIONS

NEW EDITION CHART TO BE PUBLISHED ON 31ST AUGUST 2017

Chart Number	:	CHARTS FOR SMALL CRAFT
Title	:	Singapore Port Waters and Approaches - 2017 Edition
Date Published	:	31 st August 2017
Size of Chart	:	600 x 400 mm
Description	:	The publication contains 12 Small Craft Charts and related nautical information bound into an atlas. The symbols, abbreviations and term depicted on these charts are consistent with the International Hydrographic Organization Chart Standards and Specifications.

(Refer MPA webstie <http://www.mpa.gov.sg>)

Symbols for the locations of pleasure craft facilities and areas for sea sport activities such as board sailing, dinghy sailing, keelboat sailing, power-boating and water-skiing are also included and highlighted in red.

Chart of the same publication Edition 2016 published on 4th January 2016 will be superseded.

II NEW CHARTS AND PUBLICATIONS

NEW EDITION SINGAPORE ENC RELEASED ON 15TH JUNE 2017

ENC Name : SG5C4043
Title : Kuala Johor
Coverage : Lat 01° 16' 10' N 01° 27' 50' N
 Long 103° 59' 80' E 104° 10' 00' E
Compilation Scale : 1 : 22 000
Date Released : 15th June 2017
Description : This new edition includes updates covering around Pulau Tekong and Eastern Anchorage.

The existing cell of the same name released on 16th June 2016 has been superseded.

ENC Name : SG5C4044
Title : Johor Strait - Eastern Part
Coverage : Lat 01° 19' 60' N 01° 31' 20' N
 Long 103° 45' 60' E 103° 59' 80' E
Compilation Scale : 1 : 22 000
Date Released : 15th June 2017
Description : This new edition includes updates covering north of Pulau Punggol Barat, west of Pulau Ubin and area near Denman Shoal.

The existing cell of the same name released on 16th June 2016 has been superseded.

ENC Name : SG54044B
Title : Pelabuhan Johor (Johor Port)
Coverage : Lat 01° 25' 20' N 01° 27' 86' N
 Long 103° 51' 60' E 103° 55' 70' E
Compilation Scale : 1 : 12 000
Date Released : 15th June 2017
Description : This new edition includes updates covering north of Pulau Punggol Barat and west of Pulau Ubin.

The existing cell of the same name released on 16th June 2016 has been superseded.

II NEW CHARTS AND PUBLICATIONS

RELEASE OF NEW EDITION SINGAPORE ELECTRONIC NAVIGATIONAL CHARTS (ENC) ON 17TH JULY 2017

1. A new edition of the Singapore ENC covering Singapore waters and its approaches will be released on 17th July 2017. The new edition Singapore ENC will supersede the earlier edition.
2. The 16 ENC cells and their respective coverage are as follows:

Cell Name	Coverage
SG5C4030	West Jurong Anchorages and Temasek Fairway
SG5C4031	Western Approaches to Jurong Island
SG5C4032	Sinki Fairway
SG5C4033	Tuas Bay, West Jurong Channel and Pesek Basin
SG5C4034	East Jurong Channel, Pasir Panjang Terminal and West Keppel Fairway
SG5C4035	Western Anchorages, Jong Fairway and Cruise Bay
SG5C4036	Raffles Lighthouse to The Sisters
SG5C4037	Keppel Harbour, Tanjong Pagar Terminal and Approaches
SG5C4038	Johor Strait - Western Part
SG5C4039	Western Approaches to the Main Strait
SG5C4041	Pulau Sebarok to Changi
SG5C4043	Kuala Johor
SG5C4044	Johor Strait - Eastern Part
SG54044A	Serangoon Harbour
SG54044B	Pelabuhan Johor (Johor Port)
SG54044C	Sembawang

3. The new edition Singapore ENC can be purchase from any of our Singapore ENC distributors.

Information on our Singapore ENC distributors can be found from the following link:

<http://www.mpa.gov.sg/web/portal/home/port-of-singapore/port-operations/charts-tidal-information-aids-to-navigation-hydrography/nautical-charts/singapore-electronic-navigational-chart-enc>

II

NOTICES TO MARINERS AND CHART CORRECTIONS

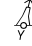






*(NM61/2017) NUMERICAL INDEX TO NOTICES TO MARINERS OF 2017 (1 TO 60)

MONTH	NOTICES TO MARINERS NO.
JANUARY 2017	1 to 10
FEBRUARY 2017	11 to 17
MARCH 2017	18 to 27T
APRIL 2017	28 to 35
MAY 2017	36 to 42
JUNE 2017	43 to 60T

CHART NO.	PUBLISHED	YEAR	NOTICES TO MARINERS NO.
GSP1, SP1	2 Ed 1/03/17	2017	36-37-38-43-44-45-46-47
200	4 Ed 1/09/15	2017	3-12-28-39-48
201	5 Ed 15/08/14	2016	61-73
202	8 Ed 15/09/16	2017	4-6-18-19-29-57-59
500	7 Ed 26/09/13	2017	5-36-37-44-49
501	7 Ed 1/09/15	2017	5-13-36-37-44-45-46-49
502	7 Ed 1/09/15	2017	20-45-46
503	5 Ed 15/08/14	2017	4-18-29-57-59

II

NOTICES TO MARINERS AND CHART CORRECTIONS

GSP1/SP1	2 Ed 1/03/17 Last NM 47/2017	(Maritime and Port Authority of Singapore)	NM 62/2017
Insert	 (50)	1° 25·65'N 103° 53·09'E	
		(New Edition Chart 4043 and 4044)	NM 63/2017
Insert	 LFl.10s	1° 25·38'N 104° 00·05'E	
	 Fl(2)R.5s	1° 26·66'N 104° 02·79'E	
	 No 1	1° 26·95'N 104° 01·25'E	
	 No 2	1° 28·18'N 104° 01·20'E	
	 No 3	1° 28·93'N 104° 00·95'E	
Delete	 Q(6)+LFl.15s TKPK	1° 25·39'N 103° 59·98'E	
	 Fl.R.3s TL2	1° 25·95'N 104° 00·42'E	
		(Malacca Strait Council)	NM 64/2017
		<i>Note: Former Notice 51(T)/2017 is cancelled</i>	
Delete	 Al.Oc.BuY.3s	1° 12·70'N 103° 54·52'E	
<hr/>			
200	4 Ed 1/09/15 Last NM 48/2017	(Malaysian Chart 5230)	NM 65/2017
Replace	 Wk , with  Wks	2° 16·00'N 101° 47·70'E	
	depth, δ_5 with depth, δ_8	2° 19·03'N 101° 56·88'E	
<hr/>			
201	5 Ed 15/08/14 Last NM 73/2017	(Malaysian Chart 5230)	NM 65/2017
Replace	 Wk , with  Wks	2° 16·00'N 101° 47·70'E	
<hr/>			
501	7 Ed 1/09/15 Last NM 49/2017	(Malacca Strait Council)	NM 64/2017
		<i>Note: Former Notice 51(T)/2017 is cancelled</i>	
Delete	 Al.Oc.BuY.3s	1° 12·70'N 103° 54·52'E	
<hr/>			
502	7 Ed 1/09/15 Last NM 46/2017	(Malacca Strait Council)	NM 64/2017
		<i>Note: Former Notice 51(T)/2017 is cancelled</i>	
Delete	 Al.Oc.BuY.3s	1° 12·70'N 103° 54·52'E	
		(Malaysian Hydrographic Office)	NM 66/2017
Replace	 MOLF2 Fl.R.3s with  MOLF2 Fl.R.3s	1° 19·88'N 104° 07·96'E	
	 MOLF1 Fl.G.3s with  MOLF1 Fl.G.3s	1° 19·88'N 104° 08·16'E	
<hr/>			

II

TEMPORARY AND PRELIMINARY NOTICES

(NM 67P/2017)

**TATA INDICOM INDIA-SINGAPORE CABLE SYSTEM (TIISCS) SEGMENT 1 -
CABLE REPAIR OPERATIONS**

- Description** : Submarine cable repair operations for the TIISCS cable shall be executed south of the east-bound lane of the Routeing System in the Singapore Strait (Main Strait). (STRAITREP Sector 7).
- Work Vessel and Call Sign** : **CB NUSANTARA EXPLORER (YBHR2)**
- Planned dates of Operation** : With effect from 26th June 2017 until 15th July 2017. The operations are conducted on a 24 hour basis

1. The designated working area is:

Position	Co-ordinates (WGS84)	
	Latitude (N)	Longitude (E)
A	01°06·815'	103°31·578'
B	01°03·850'	103°36·402'
C	01°02·892'	103°35·797'
D	01°05·810'	103°30·971'

2. Charts Affected: Singaporean 202, 500, 501 and Dual Badged BA4039.
3. Mariners are advised to navigate with caution and give a wide berth.
4. Navigational warning broadcast will be promulgated by Singapore VTIS on VHF CH 73 and NAVTEX. Mariners are to maintain a listening watch.

Source : Monson Agencies Pte Ltd

Note: Former notice 52P/2017 is cancelled.

III NAVIGATIONAL INFORMATION

*(NM 68/2017)

SINGAPORE PORT MARINE NOTICES/CIRCULARS

The Port Marine Notices/Circulars shortlisted below would be of particular interest to Mariners. Details and complete list of Port Marine Notices/Circulars are available at this link:

<http://www.mpa.gov.sg/web/portal/home/port-of-singapore/circulars-and-notices>

PMN No.	Subject
16/2017	Dredging work off western end of Jurong Island
40/2017	Installation of wave screens off Republic of Singapore Yacht Club (RSYC)
41/2017	Construction of temporary jetty and RoRo ramp in Tuas View basin at Tuas Staging Ground
47/2017	Transport of sand material to stockpile area at Tuas View Extension
49/2017	Caisson towing operations at Tuas Reclamation Area
50/2017	Reclamation work at Pulau Tekong
51/2017	Mooring and unmooring of vessels off Pulau Tekong
54/2017	Reclamation work at western part of Tuas View Extension
55/2017	Soil investigation works off Woodlands Oil Pier (Shell)
59/2017	Reclamation work in Temasek Fairway, west of Jurong Island
61/2017	Reclamation work at Tuas View, off Temasek Fairway
62/2017	Mooring and unmooring of vessels at Tuas Finger One project area
66/2017	Seawall opening and submarine cable diversion works in Ayer Merbau Basin and Selat Pandan
70/2017	Maintenance of landing pontoons at Changi Point Ferry Terminal
74/2017	Works at Tuas Terminal Phase 1
81/2017	Construction of jetty at Petrochemical Corporation of Singapore (PCS), Jurong Island
88/2017	Transport of sand material to stockpile area and soil investigation works at Tuas View Extension
91/2017	Dredging works in Temasek Fairway

PMC No.	Subject
1/2017	List of active Port Marine Circulars
3/2017	Prohibition of anchoring in the Straits of Malacca and Singapore
4/2017	Water price revisions for shipping customers
5/2017	Port dues rebate for vessels handling transshipment vehicles in Singapore

*Source: Maritime and Port Authority of Singapore

III AMENDMENTS TO PUBLICATIONS

*(NM 69/2017) UPDATING OF PUBLICATION “SINGAPORE PORT INFORMATION 2016/2017”

WHARVES AND BERTHS

1. Page 167

23 JURONG ISLAND (OILTANKING SINGAPORE LTD) (1°16·8'N, 103°44·1'E)

Amend the following:

Berth	Length of Berth Box	Max LOA	Depth Alongside (Year Surveyed)	Controlling Depth In Approaches
18	297m	50m	16.0m (2017)	13.7m
19	258m	45m	15.0m (2017)	12.8m
20	165m	23.6m	15.2m (2017)	12.8m
21	115.5m	16.5m	13.8m (2017)	12.8m

*Source: Maritime and Port Authority of Singapore

IV

REPRINT OF MARITIME SAFETY INFORMATION

The following Maritime Safety Information have been shortlisted, as they would be of particular interest to mariners.

TT175

VESSELS IN EAST JOHOR STRAIT ARE ADVISED TO NAVIGATE WITH PARTICULAR ALERTNESS AND CAUTION WHEN NEAR PROJECT AREAS OFF PULAU TEKONG, CHANGI AND MALANG PAPAN AS SHALLOW WATER AREA EXIST. VESSELS ARE REMINDED TO PROCEED AT SAFE SPEED AND MAINTAIN A PROPER LOOKOUT, PARTICULARLY FOR TUGS AND BARGES NAVIGATING NEAR THE PROJECT AREAS AND PASSENGER FERRIES CROSSING BETWEEN CHANGI AND PULAU TEKONG AND VICINITY OF PASIR GUDANG.

TT273

ALL VESSELS ARE ADVISED TO NAVIGATE WITH CAUTION, COMPLY WITH THE INTERNATIONAL COLLISION REGULATIONS AND MAINTAIN VHF RADIO WATCH AND LISTEN TO TRAFFIC INFORMATION WHEN NAVIGATING IN THE SINGAPORE STRAIT AND PORT WATERS. MARINERS ARE ALSO ADVISED TO KEEP A GOOD LOOKOUT OF FREQUENT FERRIES CROSSING THE SINGAPORE STRAIT.

TT363

MARINERS ARE REMINDED NOT TO ANCHOR IN ALL AREAS IN THE TSS OF THE STRAITS OF MALACCA AND SINGAPORE AS WELL AS BETWEEN THE LANDWARD LIMITS OF THE TSS AND APPROACHES TO THE PORTS. VESSELS ENTERING ANY PORT IN ANY LITTORAL STATES ARE TO ANCHOR IN THE ANCHORAGES DESIGNATED BY THE RESPECTIVE LITTORAL STATES ONLY.

TT389

NIPAH NORTH CARDINAL BEACON AT LAT 1°10'40"N LONG 103°39'74"E IS REPORTED UNLIT. ALL VESSELS ARE ADVISED TO NAVIGATE WITH CAUTION.

TT390 (AMENDED ON 240210Z)

BATU BERHANTI ISOLATED DANGER BUOY IN POSITION LAT 1°11'790"N LONG 103°52'474"E IS REPORTED UNLIT. AND OUT OF POSITION. VESSELS TO NAVIGATE WITH CAUTION.

TT392

PAN PAN PAN

REPORT OF VESSEL PUTRI SEA SANK AT APPROXIMATE POSITION LAT 1°17'88"N LONG 104°07'18"E. VESSELS IN THE VICINITY ARE ADVISED TO KEEP A SHARP LOOKOUT, RENDER ASSISTANCE AND REPORT TO SINGAPORE PORT OPERATIONS CONTROL CENTRE ON VHF 14 OR VHF 10.

TT394

PAN PAN PAN

REPORT OF A MOB AT APPROXIMATE POSITION LAT 1°20'00"N LONG 104°19'00"E ON 22 JUNE 2017 AT 1000HRS. VESSELS IN THE VICINITY ARE ADVISED TO KEEP A SHARP LOOKOUT, RENDER ASSISTANCE AND REPORT ANY SIGHTINGS TO SINGAPORE PORT OPERATIONS CONTROL CENTRE VIA VHF 10, OR TO THE NEAREST COASTAL AUTHORITIES.

TT392 (AMENDED 21 MAR 2017 0330Z)

A TUG BOAT 'HARITA BERLIAN 18' SANK AT POSITION 1°17'00"N 104°10'00"E. MARINERS ARE ADVISED TO NAVIGATE WITH CAUTION WHEN IN THE VICINITY.

TT398 (AMENDED 230440UTC JUN 2017)

A VESSEL HAD SUNK AT LOCATION LATITUDE 1°25'915"N LONGITUDE 104°27'389"E IN THE APPROACHES TO THE WEST BOUND LANE OF THE MIDDLE CHANNEL, NORTH EAST OFF HORSBURGH LIGHTHOUSE. THE LEAST DEPTH AT THE LOCATION IS 12.6M. AN AIS-EQUIPPED ISOLATED DANGER BUOY WITH LIGHT CHARACTERISTICS FL(2)10S HAS BEEN INSTALLED AT POSITION LATITUDE 1°26'224"N LONGITUDE 104°27'585"E IN THE APPROACHES TO THE WEST BOUND LANE OF THE MIDDLE CHANNEL.

TT399

VESSELS ARRIVING TO SINGAPORE OR TRANSITING THROUGH THE STRAIT ARE RECOMMENDED TO UPDATE THEIR DESTINATION ACCURATELY IN THE AIS TO ENHANCE SITUATION AWARENESS FOR OTHER TRAFFIC IN THE VICINITY, EXAMPLE TO INDICATE SG-PEBGB.

IV
REPRINT OF MARITIME SAFETY INFORMATION

TT412

SAFE WATER MARK BUOY LFI.10S AT 1°03-03'N 103°39-00'E IS REPORTED UNLIT.

TT961

VESSELS INTENDING TO CROSS THE TRAFFIC SEPERATION SCHEME (TSS) OR PRECAUTIONARY AREAS IN THE SINGAPORE STRAIT DURING THE HOURS OF DARKNESS ARE RECOMMENDED TO DISPLAY THE NIGHT SIGNALS CONSISTING OF 3 ALL ROUND GREEN LIGHTS IN A VERTICAL LINE AS DETAILED IN THE MARITIME AND PORT AUTHORITY OF SINGAPORE'S PORT MARINE CIRCULAR, 04 OF 2013 DATED 7 MAY 2013.

SR123

SEA ROBBERIES ARE REPORTED IN THE SINGAPORE STRAIT. ALL VESSELS ARE REMINDED TO MAINTAIN A PROPER LOOK-OUT AND REPORT ANY SUSPICIOUS CRAFT TO VTIS SINGAPORE.

ISSUED BY SINGAPORE PORT OPERATIONS CONTROL CENTRE (as at 25th Jun 2017)

V

EXTRACT OF ADMIRALTY NOTICES TO MARINERS FOR DUAL-BADGED CHARTS

These notices can also be accessed directly from UKHO Website:

<https://www.admiralty.co.uk/maritime-safety-information/admiralty-notices-to-mariners>

2603 SINGAPORE - Port of Singapore - Sakra Basin and East Jurong Channel E- NM Blocks.

Source: Maritime and Port Authority of Singapore

Chart 4032 [previous update 2117/17] WGS84 DATUM

Insert	the accompanying block, centred on:	1°15·8'N	103°43·1'E
--------	-------------------------------------	----------	------------

Chart 4034 [previous update 2117/17] WGS84 DATUM

Insert	the accompanying block, centred on:	1°15·8'N	103°43·1'E
--------	-------------------------------------	----------	------------

Amend	dredged depth, 11.3m (2016) , centred on:	1°17·523'N	103°44·626'E
	dredged depth, 7.8m (2016) , centred on:	1°17·566'N	103°44·643'E
	dredged depth, 10.1m (2017) , centred on:	1°17·453'N	103°44·767'E

2605 SINGAPORE - Tuas View SW - Buoy. NM Blocks. Maritime limit.

Source: Maritime and Port Authority of Singapore


Chart 4038 [previous update 1186/17] WGS84 DATUM

Insert	the accompanying block A, centred on:	1°24·5'N	103°31·3'E
	the accompanying block B, centred on:	1°15·3'N	103°36·4'E

Chart 4038 (Panel C, Tuas Megayard) [previous update 1186/17] WGS84 DATUM

Insert	the accompanying block C, centred on:	1°15·3'N	103°36·5'E
--------	---------------------------------------	----------	------------

Chart 4040 [previous update New Edition 04/05/2017] WGS84 DATUM

Delete	 Q(9)15s West Tuas	1°15·00'N	103°36·29'E
	maritime limit, pecked line, joining:	1°15·00'N	103°36·34'E
		1°14·62'N	103°36·34'E
		(shore)	

2617(P) SINGAPORE - Port Approach Guide Singapore - Dredged depths. Berths. Works.

Source: Maritime and Port Authority of Singapore

1. Works in the Sembcorp Marine Tuas Shipyard (1°14·99'N 103°36·65'E) have been completed.
2. New berths and docks have been established in the vicinity of position 1°15·35'N 103°36·50'E.
3. Dredged depths in the Sembcorp Marine Tuas Shipyard (1°14·99'N 103°36·65'E) have been amended.
4. Mariners are advised to navigate with caution in the area and to contact the local authorities for the latest information.
5. These changes have been included in the New Edition of Chart 4040 published 4 May 2017.
6. These changes will be included in the New Edition of 8175 to be published in Summer 2017.

Chart affected - 8175

V
EXTRACT OF ADMIRALTY NOTICES TO MARINERS
FOR DUAL-BADGED CHARTS

2720 SINGAPORE - Port of Singapore - Temasek Fairway - Buoyage. Light Beacon.

Source: Maritime and Port Authority of Singapore

Chart 4030 [previous update 2117/17] WGS84 DATUM


Insert	symbol, mooring buoy, Fl.Y.2s HSPBV-MB1	1°15·570'N	103°37·895'E
	symbol, mooring buoy, Fl.Y.2s HSPBV-MB1A	1°15·570'N	103°38·068'E
	symbol, mooring buoy, Fl.Y.3s HSPBV-MB2	1°15·570'N	103°38·181'E
	symbol, mooring buoy, Fl.Y.3s HSPBV-MB2A	1°15·570'N	103°38·353'E
	symbol, mooring buoy, Fl.Y.5s HSPBV-MB3	1°15·570'N	103°38·467'E
	symbol, mooring buoy, Fl.Y.5s HSPBV-MB3A	1°15·570'N	103°38·639'E
Delete	 Fl(2)R.5s F1JV-01	1°15·524'N	103°38·709'E

Chart 4031 [previous update 2117/17] WGS84 DATUM


Insert	symbol, mooring buoy, Fl.Y.5s HSPBV-MB3A	1°15·570'N	103°38·639'E
Delete	 Fl(2)R.5s F1JV-01	1°15·524'N	103°38·709'E

Chart 4033 [previous update 2117/17] WGS84 DATUM


Insert	symbol, mooring buoy, Fl.Y.2s HSPBV-MB1	1°15·570'N	103°37·895'E
	symbol, mooring buoy, Fl.Y.2s HSPBV-MB1A	1°15·570'N	103°38·068'E
	symbol, mooring buoy, Fl.Y.3s HSPBV-MB2	1°15·570'N	103°38·181'E
	symbol, mooring buoy, Fl.Y.3s HSPBV-MB2A	1°15·570'N	103°38·353'E
	symbol, mooring buoy, Fl.Y.5s HSPBV-MB3	1°15·570'N	103°38·467'E
	symbol, mooring buoy, Fl.Y.5s HSPBV-MB3A	1°15·570'N	103°38·639'E
Delete	 Fl(2)R.5s F1JV-01	1°15·524'N	103°38·709'E

Chart 4038 [previous update 2605/17] WGS84 DATUM

Delete	 Fl(2)R.5s F1JV-01	1°15·52'N	103°38·71'E
--------	--	-----------	-------------

V
EXTRACT OF ADMIRALTY NOTICES TO MARINERS
FOR DUAL-BADGED CHARTS

2720 SINGAPORE - Port of Singapore - Temasek Fairway - Buoyage. Light Beacon.

Source: Maritime and Port Authority of Singapore

Chart 4039 [previous update New Edition 04/05/2017] WGS84 DATUM





Replace	 FI(2)10s11m5M Banyan, with	 FI(2)10s11m5M	1°13·35'N	103°41·59'E
	Banyan			

Chart 4040 [previous update 2605/2017] WGS84 DATUM

Replace	 FI(2)10s11m5M Banyan, with	 FI(2)10s11m5M	1°13·35'N	103°41·59'E
	Banyan			

Delete	 FI(2)R.5s F1JV-01	1°15·52'N	103°38·71'E
--------	--	-----------	-------------

2921 SINGAPORE - Port of Singapore - East Jurong Channel NW - Dredged depth.

Source: Maritime and Port Authority of Singapore

Chart 4034 [previous update 2603/17] WGS84 DATUM

Amend	dredged depth to, 10.0m (2017) , centred on:	1°18·00'N	103°43·30'E
-------	---	-----------	-------------

2929 SINGAPORE - Keppel Harbour - Outer Shoal SW - Light beacon.

Source: Maritime and Port Authority of Singapore

Chart 4037 [previous update 2105/17] WGS84 DATUM



Replace	 Fl.G.5s8m5M Outer Shoal, with		
	 Fl.G.5s8m5M Outer Shoal	1°15·018'N	103°51·812'E

Chart 4040 [previous update 2720/17] WGS84 DATUM

	 Fl.G.5s8m5M Outer Shoal, with		
	 Fl.G.5s8m5M Outer Shoal	1°15·02'N	103°51·81'E

Chart 4041 [previous update New Edition 04/05/2017] WGS84 DATUM

	 Fl.G.5s8m5M Outer Shoal, with		
	 Fl.G.5s8m5M Outer Shoal	1°15·02'N	103°51·81'E

V
EXTRACT OF ADMIRALTY NOTICES TO MARINERS
FOR DUAL-BADGED CHARTS

2955 SINGAPORE - Jurong Island - Temasek Fairway - Dredged depths

Source: Maritime and Port Authority of Singapore

Chart 4030 [previous update 2720/17] WGS84 DATUM

Amend	dredged depth to, 17.0m (2017) , centred on:	1°15'682"N	103°39'335"E
		1°15'560"N	103°39'386"E
	dredged depth to, 16.7m (2017) , centred on:	1°15'401"N	103°39'451"E

Chart 4031 [previous update 2720/17] WGS84 DATUM

Amend	dredged depth to, 17.0m (2017) , centred on:	1°15'682"N	103°39'335"E
		1°15'560"N	103°39'386"E
	dredged depth to, 16.7m (2017) , centred on:	1°15'401"N	103°39'451"E

Chart 4033 [previous update 2720/17] WGS84 DATUM

Amend	dredged depth to, 17.0m (2017) , centred on:	1°15'682"N	103°39'335"E
		1°15'560"N	103°39'386"E
	dredged depth to, 16.7m (2017) , centred on:	1°15'401"N	103°39'451"E

2964 SINGAPORE - Tuas View W - Buoy.

Source: Maritime and Port Authority of Singapore

Chart 4038 [previous update 2720/17] WGS84 DATUM

Insert	 Fl.Y.10s DHI-TWC	1°17'61"N	103°36'93"E
--------	---	-----------	-------------

V
EXTRACT OF ADMIRALTY NOTICES TO MARINERS
FOR DUAL-BADGED CHARTS

2964 SINGAPORE - Tuas View W - Buoy.

Source: Maritime and Port Authority of Singapore

Chart 4038 [previous update 2720/17] WGS84 DATUM

Insert  **Fl.Y.10s DHI-TWC** 1°17·61'N 103°36·93'E

Chart 4040 [previous update 2729/17] WGS84 DATUM

Insert  **Fl.Y.10s DHI-TWC** 1°17·61'N 103°36·93'E

2967(P) SINGAPORE - Damar Laut Basin and Jurong Island W - Dredged depths.

Source: Maritime and Port Authority of Singapore

1.

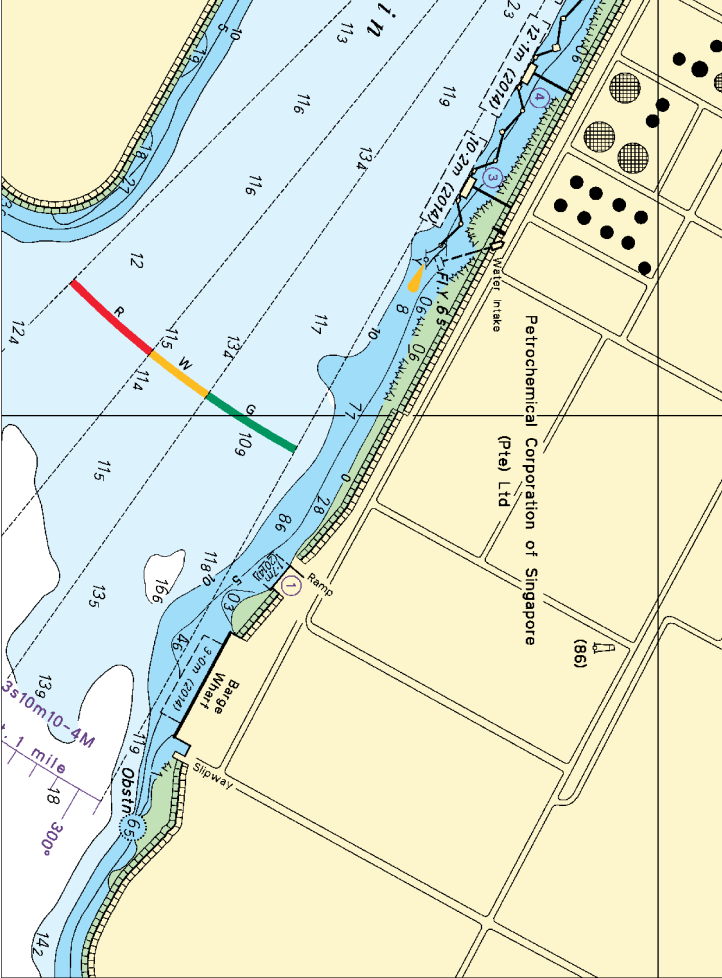
Update	Feature	Position
Amend	dredged depth to, 10.0m , centred on:	1°18·00'N 103°43·29'E
	dredged depth to, 16.7m , centred on:	1°15·40'N 103°39·45'E

2. These changes will be included in a New Edition of Chart 8175 to be published mid 2017.

Chart affected - 8175

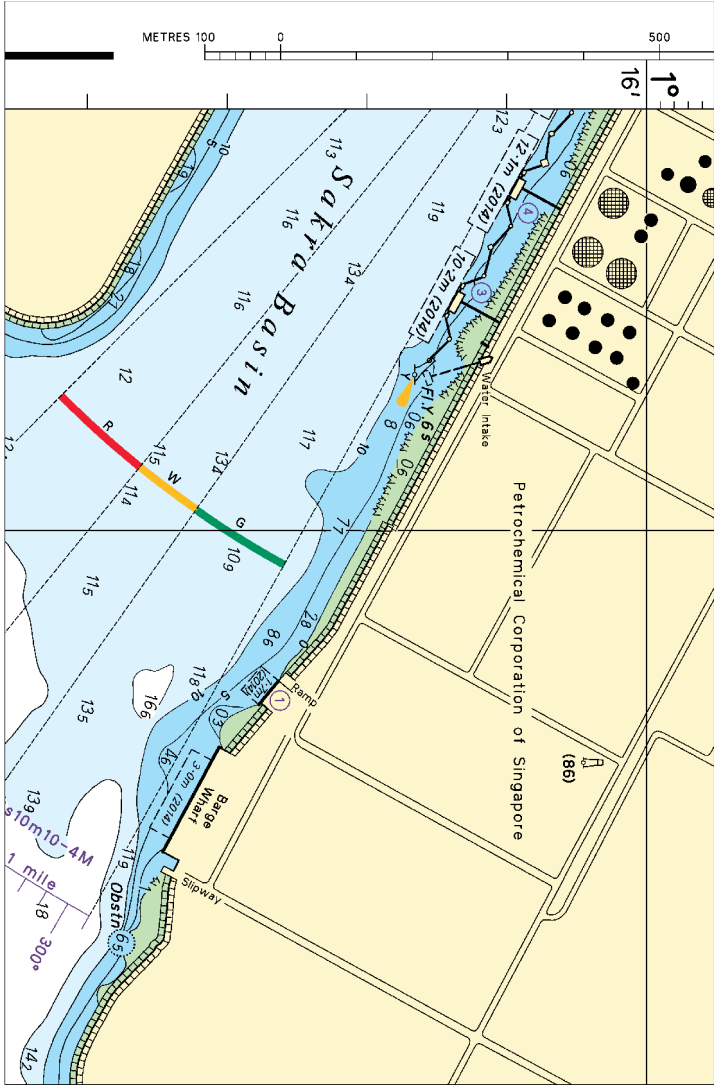
Updated to Admiralty Notices to Mariners No. 26 of 2017 dated 29th June 2017

To accompany Notice to Mariners 2603/17. Image Size (mm) 95.4 by 129.4



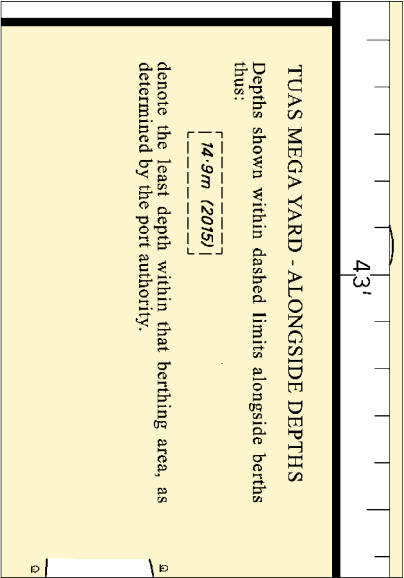
Block for Chart No 4032

To accompany Notice to Mariners 2603/17. Image Size (mm) 93.8 by 143.3



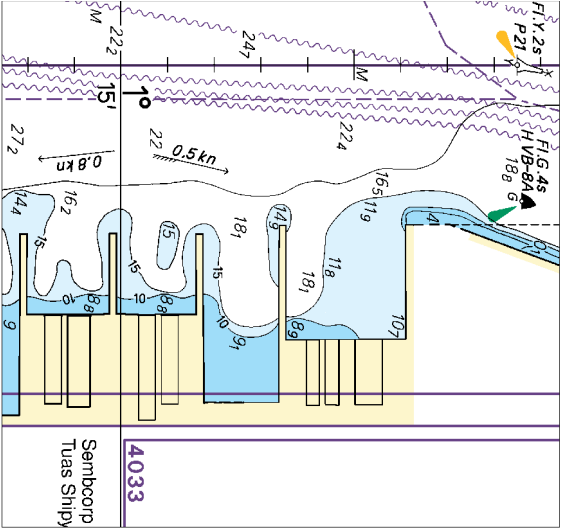
Block for Chart No 4034

To accompany Notice to Mariners 2605/17. Image Size (mm) 53.1 by 76.2



Block A for Chart No 4038

To accompany Notice to Mariners 2605/17. Image Size (mm) 73.7 by 69.6



Block B for Chart No 4038

FI G 4s
H VB-6A
188

194
213
224
233
22
245
272

134
119
118
188
181
186
149
157
181
153
185
162
151
154

17 12.0m (2016)
16 15.1m (2016)
15 15.0m (2016)
14 9.0m (2016)
13 9.1m (2016)
11 15.0m (2013)
12 9.0m (2013)
10 15.0m (2013)
9 15.0m (2013)
8 15.0m (2013)
7 15.0m (2013)
6 15.0m (2013)
5 9.0m (2013)

121
9
8
89
101
91
107
88
104
9
88
88
9
9
9

Dock 7
Dock 6
Dock 5
Dock 1
Dock 2
Dock 4
Dock 3

Sembcorp Marine
Tuas Shipyard

0.5 km
0.8 km

1° 15'

TUAS MEGA YARD
SCALE 1 : 12 500
Magnetic Variation: 0°15'E 2016 (0')

Block C for Chart No 4038

HYDROGRAPHIC NOTE - Instructions

1. Mariners are requested to notify the Chief Hydrographer, Maritime and Port Authority of Singapore, when new or suspected dangers to navigation are discovered, changes are observed in aids to navigation or where corrections to nautical publications may be necessary. Reports, which cannot be confirmed or are lacking in certain details should not be withheld.
2. Any ambiguities of time, positioning and depth should be stressed and any firm expectation of being able to check the information provided on a following voyage should be mentioned.
3. Mariners using satellite position fixing systems, eg. GPS, should provide details of equipment and datum used (where applicable). Where bearings (true or magnetic) are taken visually or by radar to fix a position, it should include more than two objects in order to provide a check on its accuracy. A position may also be defined by bearing and distance from a conspicuous object eg. beacon, lighthouse etc.
4. The note should include a tracing or a digital image of the chart used and the details should be clearly marked.
5. Echo sounders frequently register greater depths than the advertised maximum depth for the equipment, eg. a trace appearing at 50 metres may be in fact be 550 metres or even 1050 metres for equipment whose maximum depth is 500 metres. Erroneous depths caused by 2nd transmission error can usually be recognised by the following:
 - (a) the tracing being weaker than normal for the depth registered,
 - (b) the trace appearing to pass through the transmission line,
 - (c) the feathery nature of the trace.
6. Upon receipt of a hydrographic note, a Notice to Mariners may be issued. The sender's vessel or name is quoted as the source unless the same information is also received in foreign Notices to Mariners.
7. Reports of shoals, uncharted dangers and defects in aids to navigation may also be made to the appropriate Singapore Port Operations Control Centre on VHF Channels 10, 12, 14, 68 or 73.

HYDROGRAPHIC NOTE

To:

Chief Hydrographer
Maritime and Port Authority of Singapore
7B Keppel Road #20-00 Tanjong Pagar Complex
Singapore 089055

Tel : (65) 6325 2027
Fax : (65) 6226 1076
Email : hydrographic@mpa.gov.sg

Sender's Contact Details :

Date :

Name of Vessel :

Address of Sender :

Tel : Fax :

Email :

Nature of Observation :

General Location :

Subject :

Position : Lat. Long.

Charts Used :

Date & Time of Observation :

Details :
.....
.....
.....

Attachment :

Equipment Used :

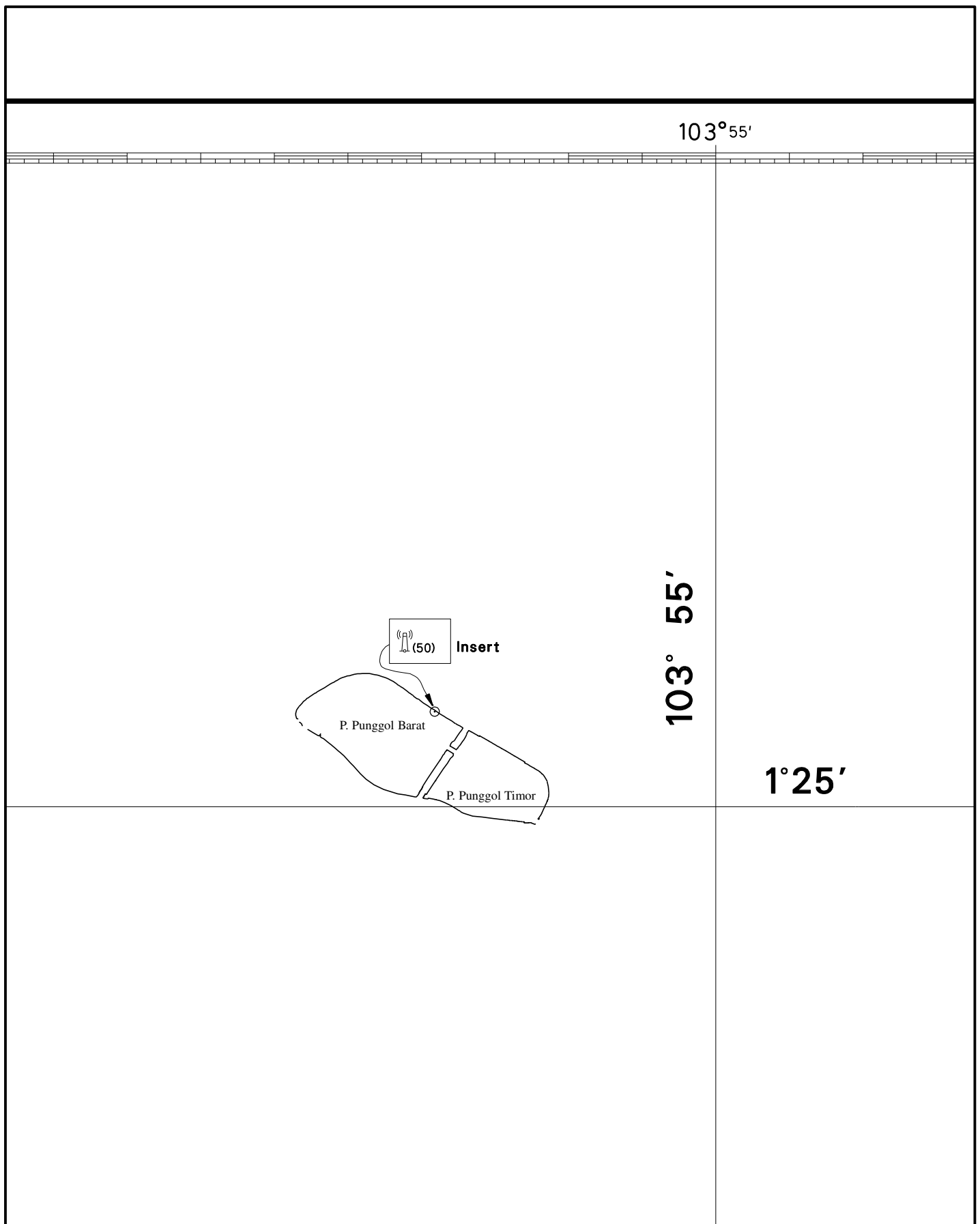
Type of Position Fixing : GPS / DGPS Others :

Type of Echo Sounder :

Name and Signature :

Ship's/Company's Stamp :

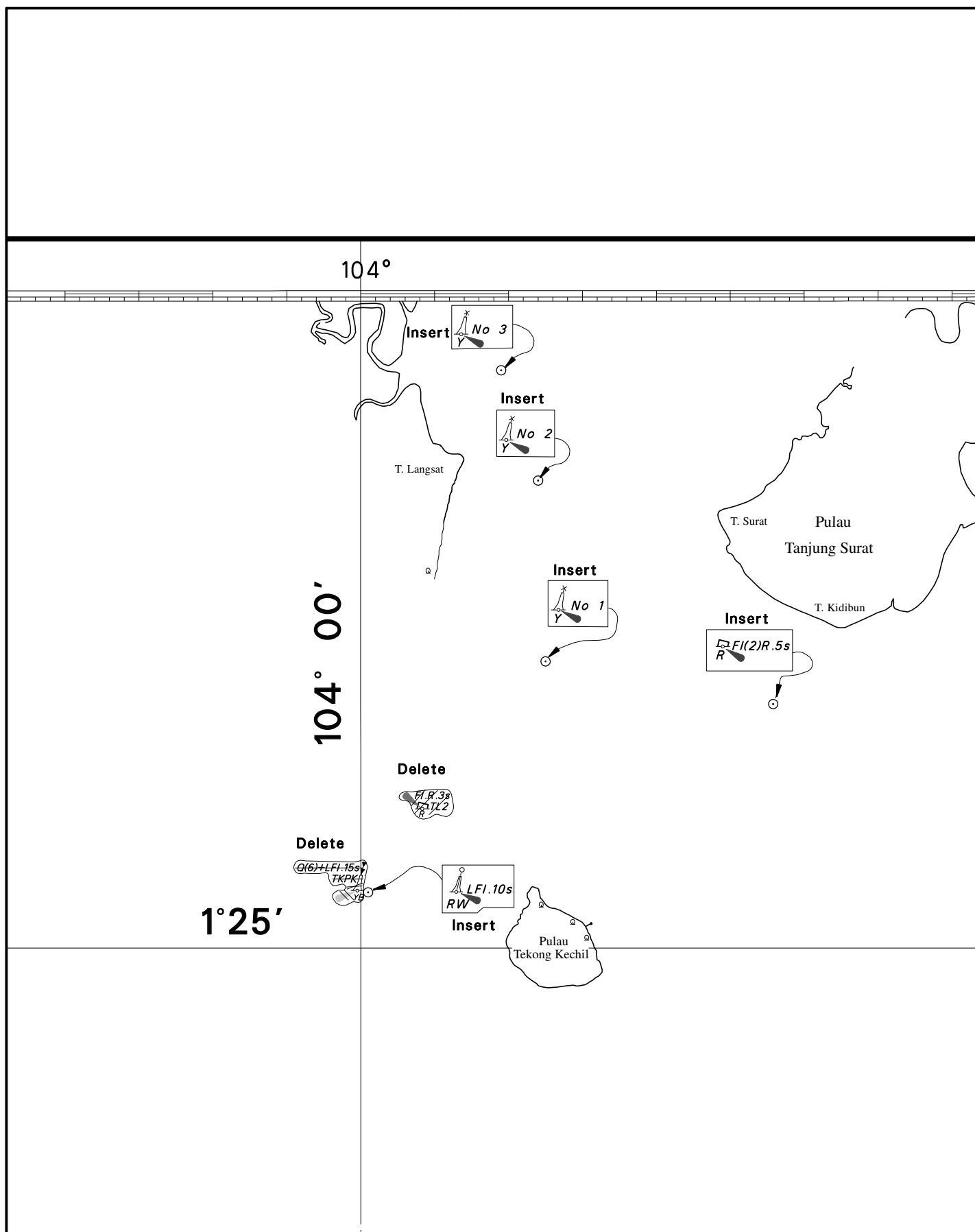
NOTICES TO MARINERS TRACINGS



CORRECTION NO.	SNM EDN NO.	LAST CORR N NO.	CHART NO.	Location on Chart		
						X
62	7/2017	47/17	GSP1/SP1			

Caution: some computer printers might distort the tracings.
Users are advised to check and, if necessary, adjust settings on the printer

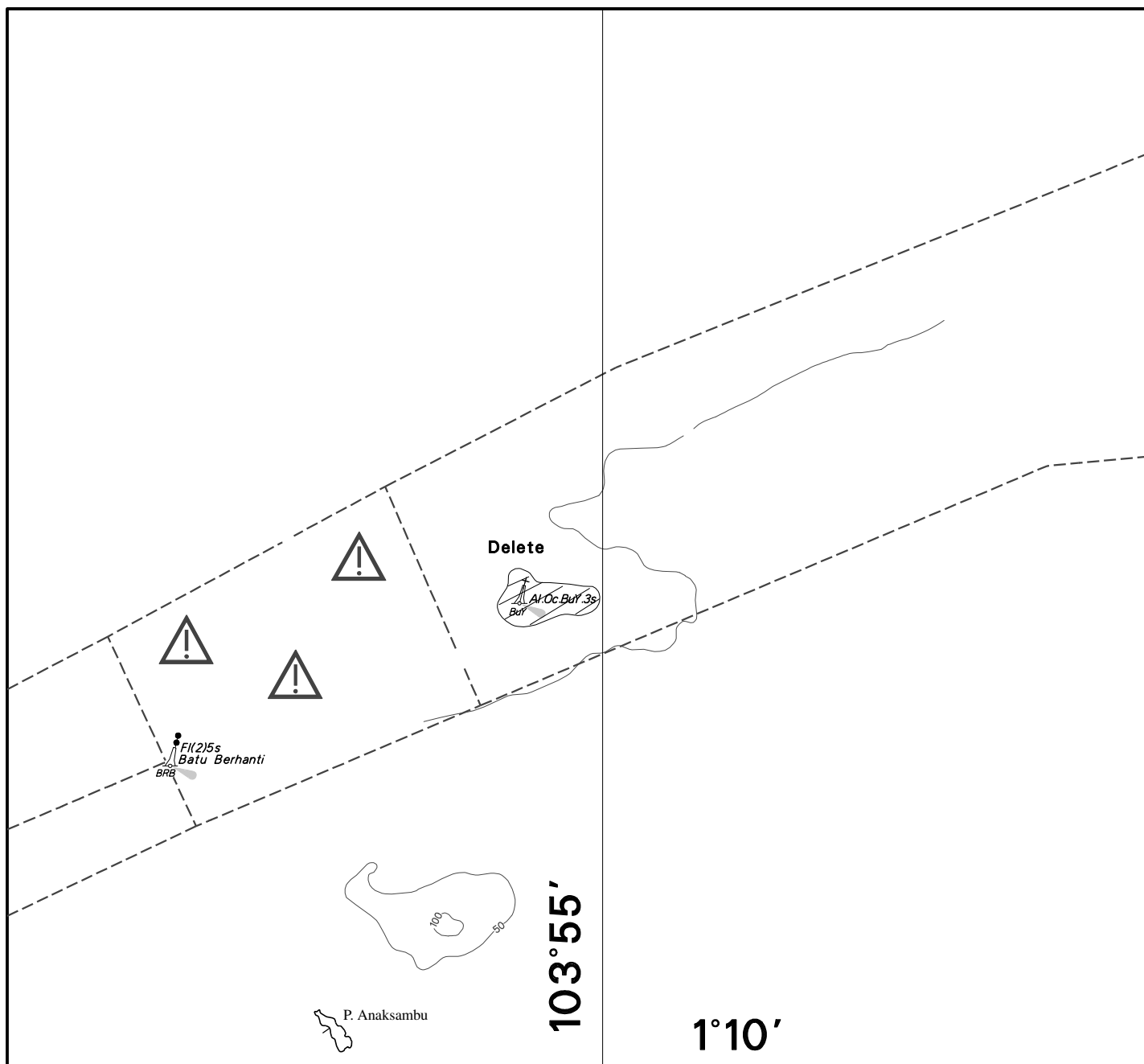
NOTICES TO MARINERS TRACINGS



CORRECTION NO.	SNM EDN NO.	LAST CORR NO.	CHART NO.	Location on Chart		
						X
63	7/2017	62/2017	GSP1/SP1			

Caution: some computer printers might distort the tracings.
Users are advised to check and, if necessary, adjust settings on the printer

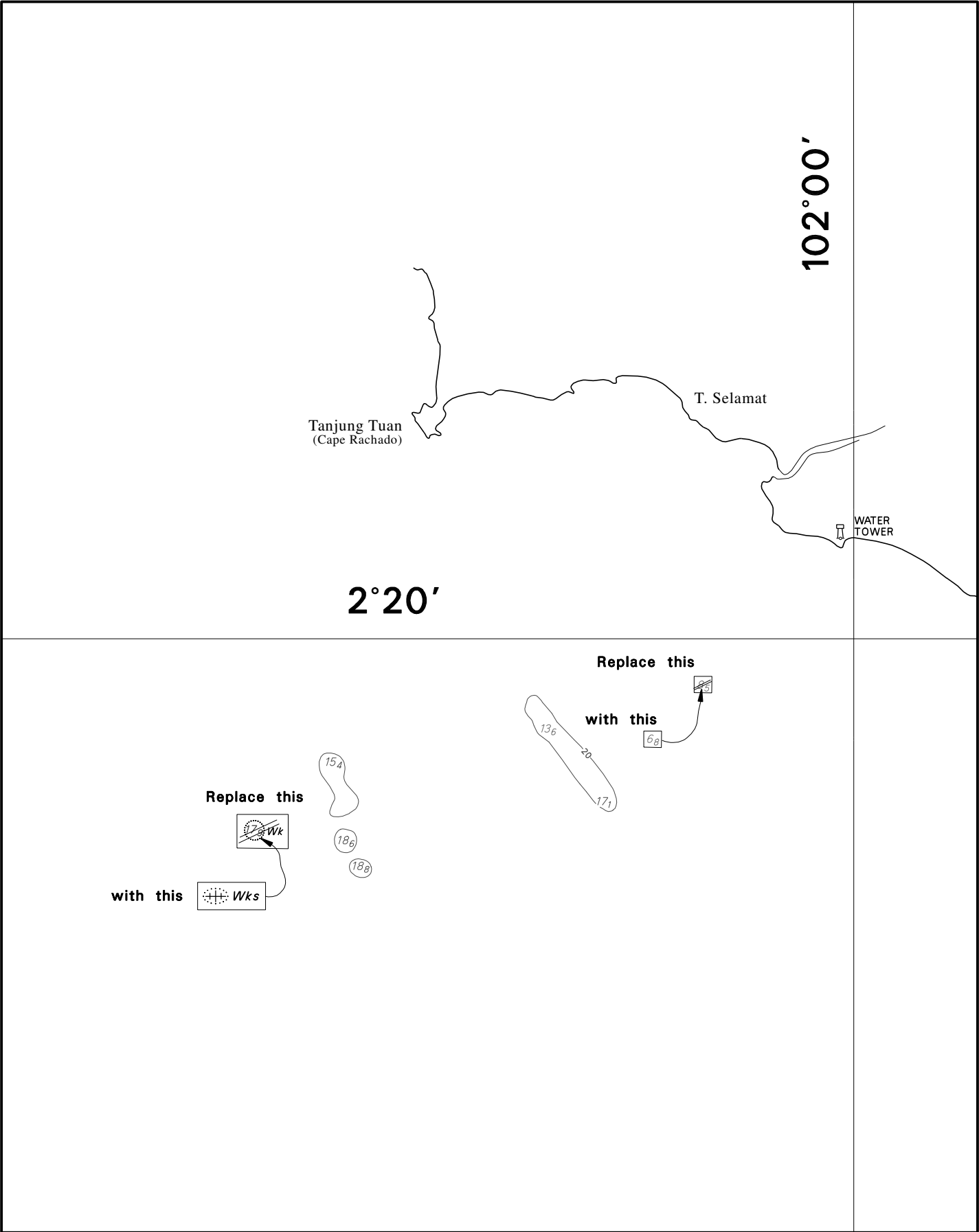
NOTICES TO MARINERS TRACINGS



CORRECTION NO.	SNM EDN NO.	LAST CORRNO NO.	CHART NO.	Location on Chart		
64	7/2017	63/2017	GSP1/SP1		x	

Caution: some computer printers might distort the tracings.
Users are advised to check and, if necessary, adjust settings on the printer

NOTICES TO MARINERS TRACINGS

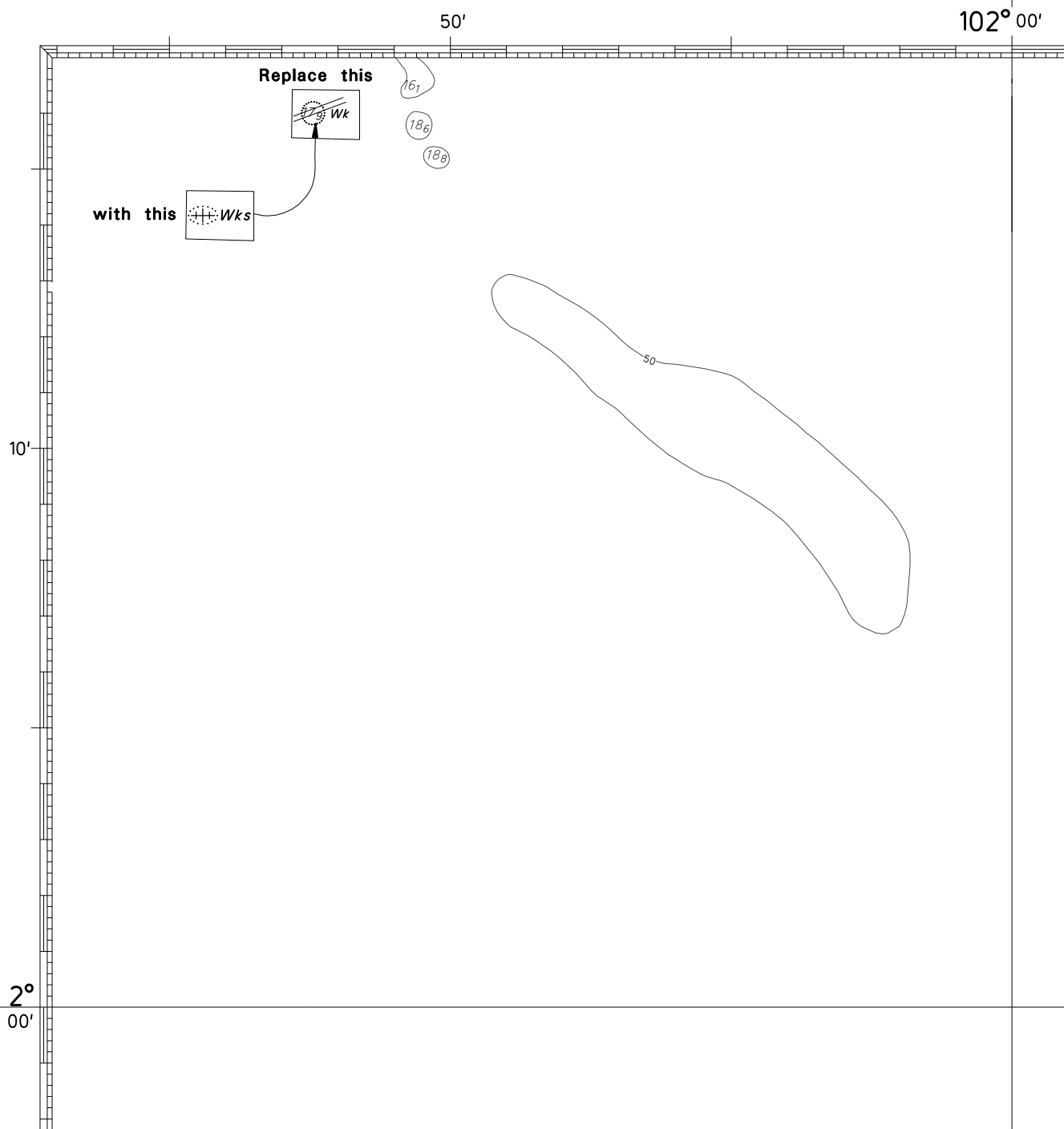


CORRECTION NO.	SNM EDN NO.	LAST CORRNO NO.	CHART NO.	Location on Chart		
65	7/2017	48/2017	200			x

Caution: some computer printers might distort the tracings.
Users are advised to check and, if necessary, adjust settings on the printer

NOTICES TO MARINERS TRACINGS

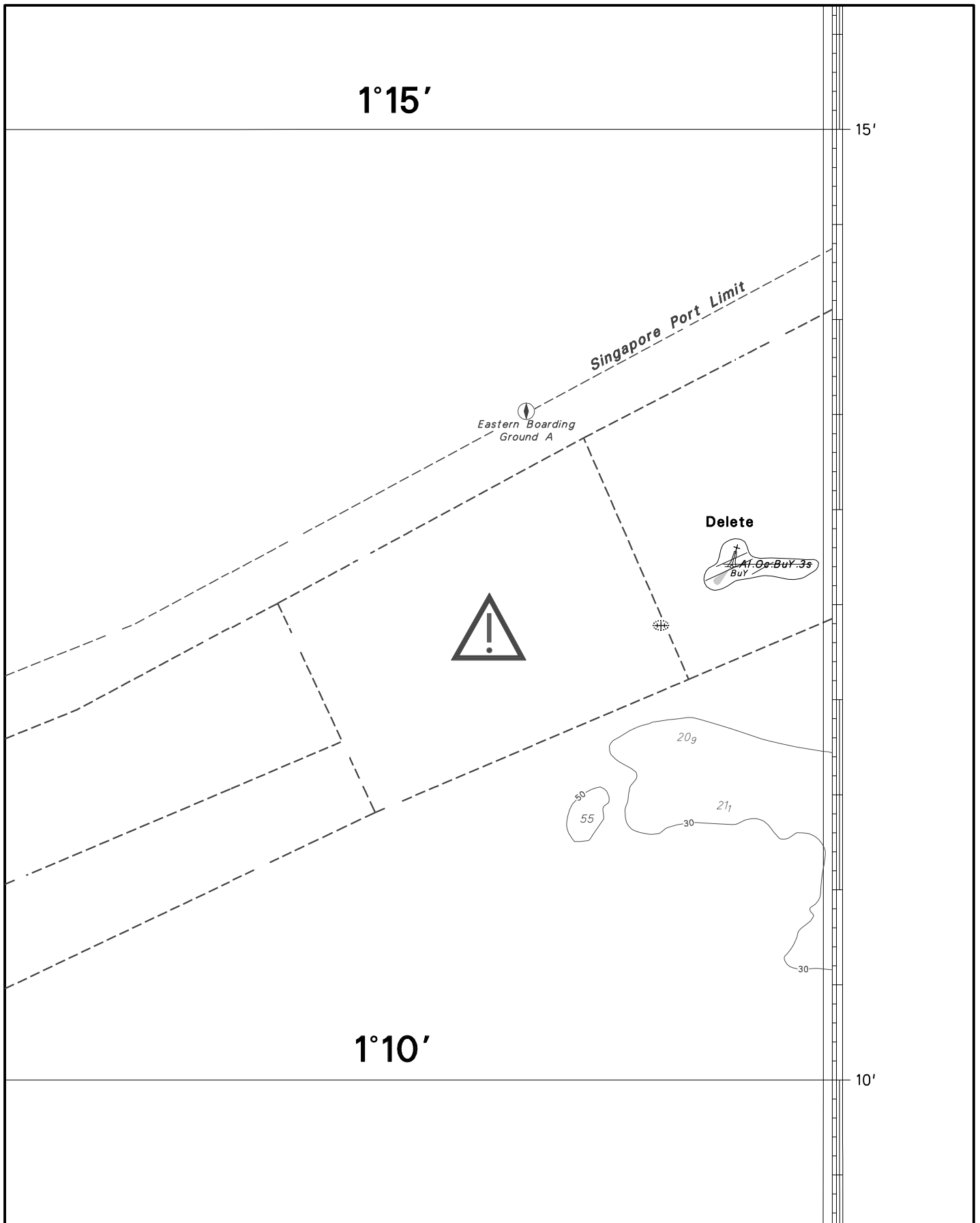
201



CORRECTION NO.	SNM EDN NO.	LAST CORR NO.	CHART NO.	Location on Chart		
				X		
65	7/2017	73/2017	201			

Caution: some computer printers might distort the tracings.
Users are advised to check and, if necessary, adjust settings on the printer

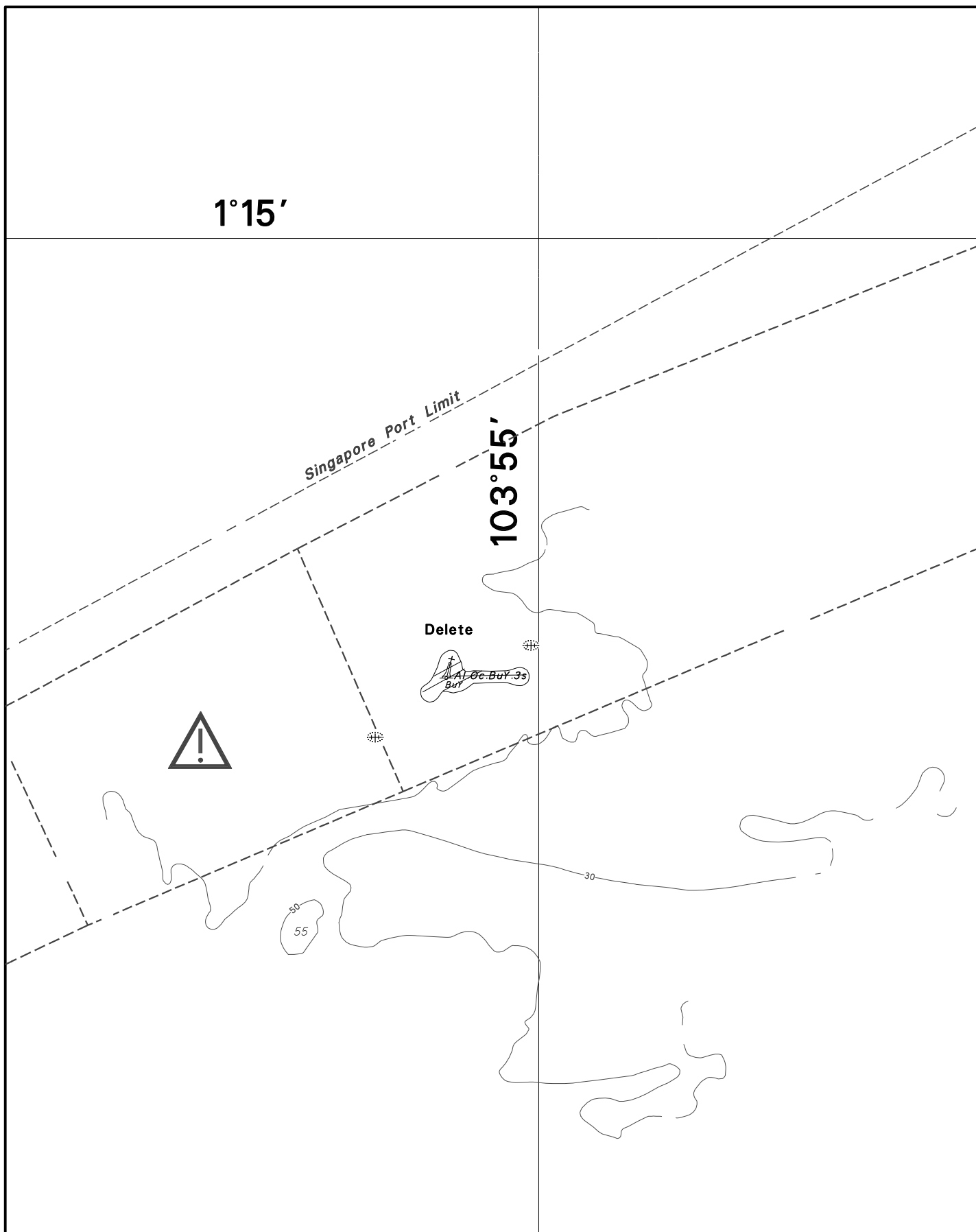
NOTICES TO MARINERS TRACINGS



CORRECTION NO.	SNM EDN NO.	LAST CORR NO.	CHART NO.	Location on Chart		
64	7/2017	49/2017	501			X

Caution: some computer printers might distort the tracings.
Users are advised to check and, if necessary, adjust settings on the printer

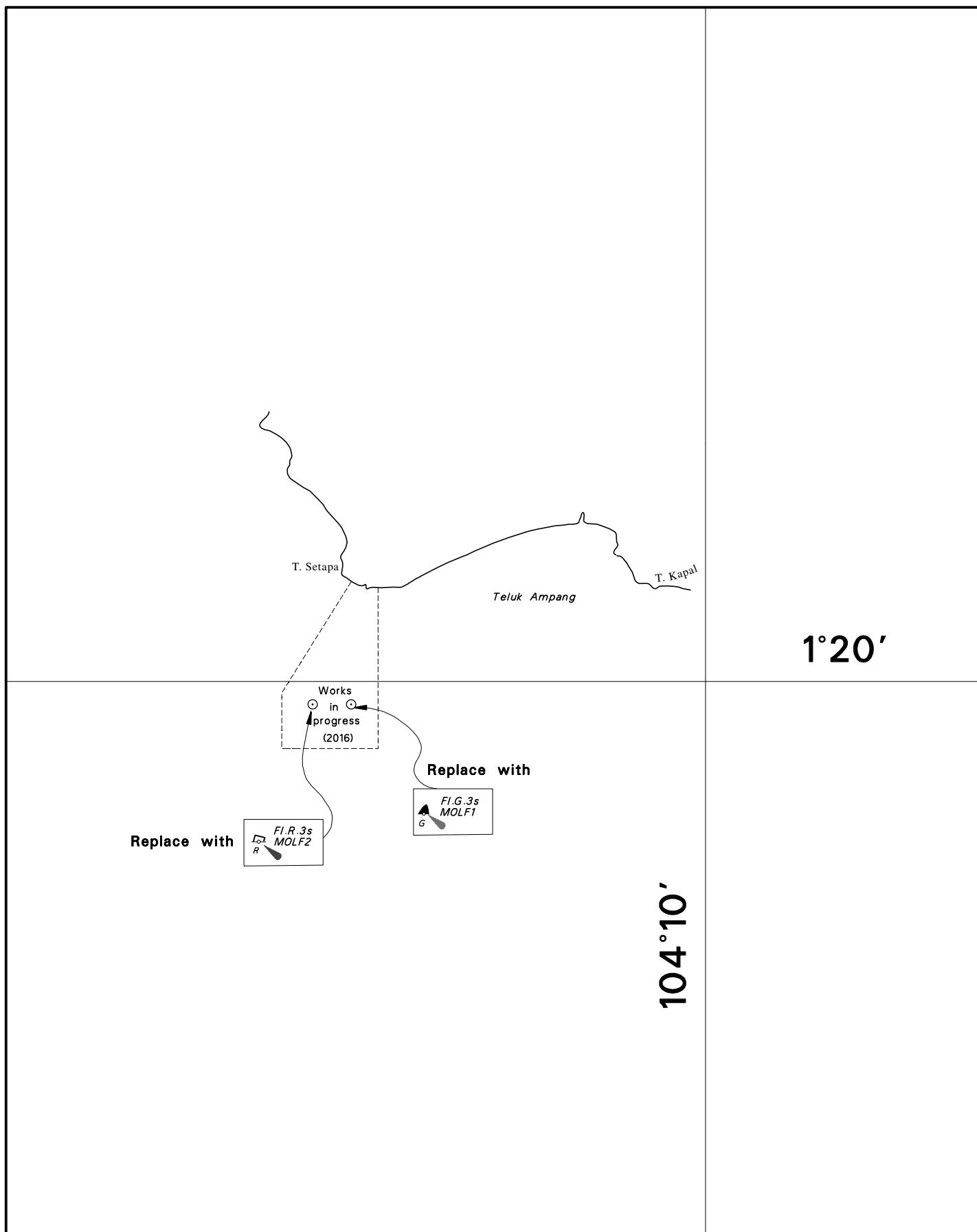
NOTICES TO MARINERS TRACINGS



CORRECTION NO.	SNM EDN NO.	LAST CORRNO NO.	CHART NO.	Location on Chart		
64	7/2017	46/2017	502	X		

Caution: some computer printers might distort the tracings.
Users are advised to check and, if necessary, adjust settings on the printer

NOTICES TO MARINERS TRACINGS



CORRECTION NO.	SNM EDN NO.	LAST CORRNO NO.	CHART NO.	Location on Chart		
					X	
66	7/2017	64/2017	502			

Caution: some computer printers might distort the tracings.
Users are advised to check and, if necessary, adjust settings on the printer