



SINGAPOREAN NOTICES TO MARINERS

| SECTION | CONTENT | Page |
|---------|---|------|
| I | Affected Charts & Publications | 1 |
| II | Notices to Mariners and Chart Corrections | 6 |
| | Temporary and Preliminary Notices | 8 |
| III | Navigational Information | 10 |
| | Amendments to Publications | 12 |
| IV | Reprint of Maritime Safety Information | 13 |
| V | Extract of Admiralty Notices to Mariners for Dual-Badged Charts | 15 |

The monthly Notices to Mariners contain information required to keep charts and publications published by the Hydrographic Division, Maritime and Port Authority of Singapore up-to-date.

Mariners are requested to notify the Chief Hydrographer, Maritime and Port Authority of Singapore, immediately of the discovery of new or suspected dangers to navigation, observed changes to aids to navigation and ways Singaporean Charts and Publications can be improved. The Hydrographic Note on the back page should be used for this purpose.

Detailed information of charts and publications (coverage of charts, latest editions and distributors) are available on the Maritime and Port Authority Website: www.mpa.gov.sg

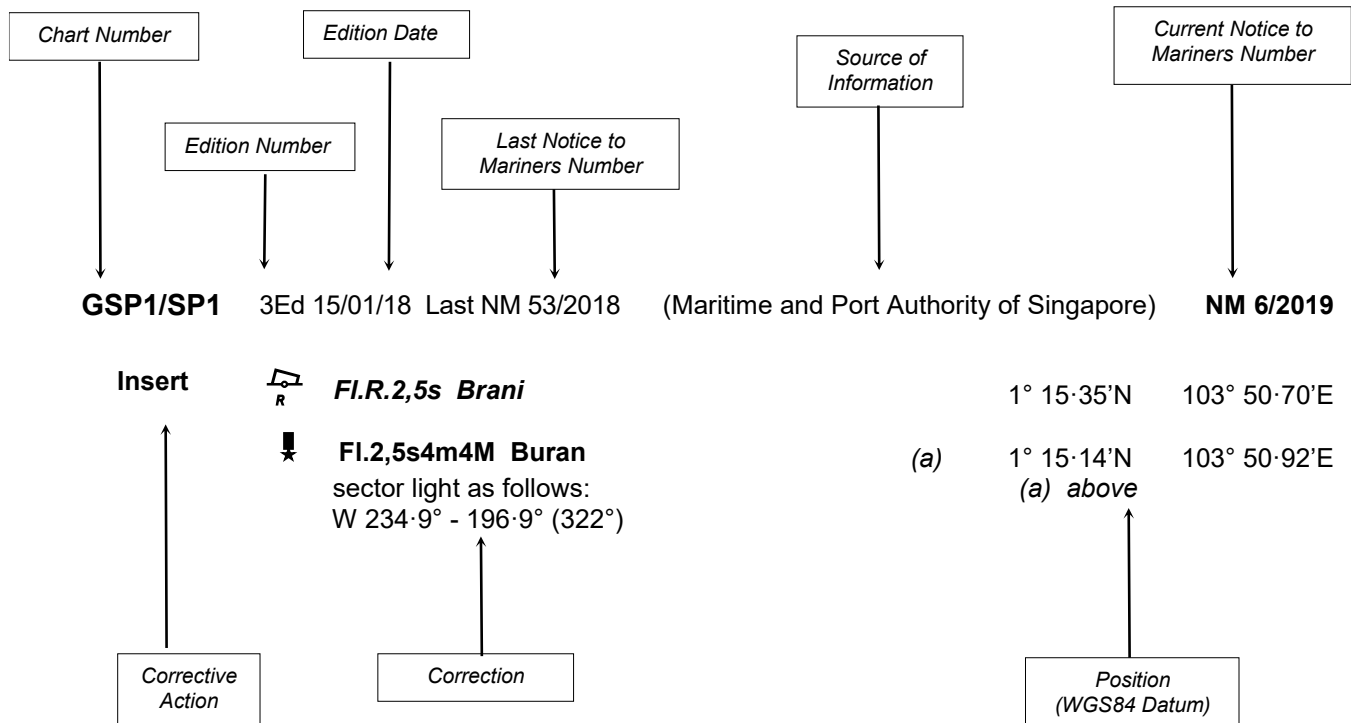
- [Singaporean Notice to Mariners](#)
- [Singaporean Charts](#)
- [Dual-Badged Charts](#)
- [Singapore ENC](#)
- [Malacca and Singapore Straits ENC](#)
- [Singapore Port Information](#)
- [Singapore Tide Tables](#)

Contact information:

Hydrographic Division
Maritime and Port Authority of Singapore
7B Keppel Road
#20-00 Tanjong Pagar Complex
Singapore 089055
Tel : (65) 6325 2027
Fax : (65) 6226 1076
Email : hydrographic@mpa.gov.sg

EXPLANATION OF FORMAT

The elements of a typical chart correction are explained below.



Notes:

a) Notice to Mariners number followed by:

T indicates a Temporary Notice (eg. **NM 9T/2019**).

P indicates a Preliminary Notice (eg. **NM 10P/2019**).

b) Bearings are true reckoned clockwise from 000° to 359°; those relating to lights are from seaward.

c) Heights and elevations are above Mean High Water Springs.

I
AFFECTED CHARTS AND PUBLICATIONS

INDEX OF AFFECTED CHARTS

| DESCRIPTION | NOTICE NO. | PAGE NO. |
|---|------------|----------|
| New Charts and Publications | - | 3 - 5 |
| Numerical Index to Notices to Mariners of 2019 | *75 | 6 |
| Singaporean Chart GSP1/SP1 | *76 | 7 |
| Singaporean Chart 201 | 77 | 7 |
| Singaporean Chart 202 | 77 | 7 |
| Singaporean Chart 500 | 77 | 7 |
| Temporary and Preliminary Notices | *78T | 8 - 9 |
| Singapore Port Marine Notices/Circulars | *79 | 10 - 11 |
| Amendments to Publications | *80 | 12 |
| Reprint of Maritime Safety Information | - | 13 - 14 |
| Extract of Admiralty Notices to Mariners for Dual-Badged Charts | - | 15 |

*Source: Maritime and Port Authority of Singapore

I
AFFECTED CHARTS AND PUBLICATIONS

INDEX OF NOTICES

| NOTICE NO. | DESCRIPTION | PAGE NO. |
|-------------------|---|-----------------|
| - | New Charts and Publications | 3 - 5 |
| *75 | Numerical Index to Notices to Mariners of 2019 | 6 |
| *76 | Singaporean Chart GSP1/SP1 | 7 |
| 77 | Singaporean Chart 201 | 7 |
| 77 | Singaporean Chart 202 | 7 |
| 77 | Singaporean Chart 500 | 7 |
| *78T | Temporary and Preliminary Notices | 8 - 9 |
| *79 | Singapore Port Marine Notices/Circulars | 10 - 11 |
| *80 | Amendments to Publications | 12 |
| - | Reprint of Maritime Safety Information | 13 - 14 |
| - | Extract of Admiralty Notices to Mariners for Dual-Badged Charts | 15 |

*Source: Maritime and Port Authority of Singapore

II

NEW CHARTS AND PUBLICATIONS

NEW EDITION DUAL BADGED CHARTS TO BE PUBLISHED ON 15TH AUGUST 2019

| | | |
|-----------------------|---|--|
| Chart Number | : | 4038 |
| Title | : | Malaysia and Singapore Johor Strait - Western Part |
| Coverage | : | Lat 01° 10-80' N 01° 28-70' N Long 103° 28-60' E 103° 40-70' E |
| Scale | : | 1 : 30 000 |
| Date Published | : | 15 th August 2019 |
| Size of Chart | : | 750.6 x 1100.2 mm |
| Description | : | This new edition includes revised anchorages, fairways, updated bathymetry and topography details covering Sudong, Jurong Island and western part of Johor Strait, including bathymetry details in the TSS from the Joint Survey in the Straits of Malacca and Singapore. The existing chart of the same number published on 25 th February 2016 will be superseded. |

| | | |
|-----------------------|---|--|
| Chart Number | : | 4040 |
| Title | : | Singapore, Indonesia and Malaysia Tuas View to Pulau Sakijang Bendera (S. John's Island) |
| Coverage | : | Lat 01° 07-40' N 01° 19-60' N Long 103° 34-10' E 103° 51-90' E |
| Scale | : | 1 : 30 000 |
| Date Published | : | 15 th August 2019 |
| Size of Chart | : | 1100.6 x 749.5 mm |
| Description | : | This new edition includes revised anchorages, channel, fairways, updated bathymetry and topography details covering West Keppel Fairway, Sudong, Jurong Island, Tuas View to Pulau Sakijang Bendera, including bathymetry details in the TSS from the Joint Survey in the Straits of Malacca and Singapore. The existing chart of the same number published on 4 th May 2017 will be superseded. |

II

NEW CHARTS AND PUBLICATIONS

NEW EDITION DUAL BADGED CHARTS TO BE PUBLISHED ON 29TH AUGUST 2019

| | | |
|-----------------------|---|--|
| Chart Number | : | 4039 |
| Title | : | Indonesia, Singapore and Malaysia Western Approaches to Main Strait |
| Coverage | : | Lat 01° 01' 50' N 01° 13' 70' N Long 103° 31' 20' E 103° 49' 00' E |
| Scale | : | 1 : 30 000 |
| Date Published | : | 29 th August 2019 |
| Size of Chart | : | 1100.7 x 749.5 mm |
| Description | : | This new edition includes revised anchorages, fairways, updated bathymetry and topography details covering Sudong, Jurong Island and western part of Johor Strait, including bathymetry details in the TSS from the Joint Survey in the Straits of Malacca and Singapore. The existing chart of the same number published on 4 th May 2017 will be superseded. |

| | | |
|-----------------------|---|--|
| Chart Number | : | 4041 |
| Title | : | Singapore and Indonesia Pulau Sebarok to Changi |
| Coverage | : | Lat 01° 07' 40' N 01° 19' 60' N Long 103° 46' 90' E 104° 04' 70' E |
| Scale | : | 1 : 30 000 |
| Date Published | : | 29 th August 2019 |
| Size of Chart | : | 1100.6 x 749.5 mm |
| Description | : | This new edition includes updated bathymetry and covering Pulau Sebarok to Changi and new anchorages around Batam, including bathymetry details in the TSS from the Joint Survey in the Straits of Malacca and Singapore. The existing chart of the same number published on 27 th December 2018 will be superseded. |

| | | |
|-----------------------|---|---|
| Chart Number | : | 4042 |
| Title | : | Indonesia, Malaysia and Singapore Changi to Pulau Mungging and Tanjung Buntan to Tanjung Tondang |
| Coverage | : | Lat 01° 09' 55' N 01° 21' 75' N Long 104° 01' 70' E 104° 19' 50' E |
| Scale | : | 1 : 30 000 |
| Date Published | : | 29 th August 2019 |
| Size of Chart | : | 1100.6 x 749.5 mm |
| Description | : | This new edition includes updated submarine cables and bathymetry details covering Changi. The existing chart of the same number published on 15 th June 2017 will be superseded. |

II NEW CHARTS AND PUBLICATIONS

NEW EDITION SINGAPORE ENC TO BE RELEASED ON 15TH AUGUST 2019

| | | |
|--------------------------|---|--|
| ENC Name | : | SG5C4038 |
| Location | : | Johor Strait - Western Part |
| Coverage | : | Lat 01° 13·70' N 01° 31·20' N Long 103° 34·10' E 103° 46·34' E |
| Compilation Scale | : | 1 : 22 000 |
| Date Released | : | 15 th August 2019 |
| Description | : | This new edition includes updated bathymetry and topography details covering western part Singapore and Johor Strait. The existing cell of the same name released on 17 th July 2017 will be superseded. |

NEW EDITION SINGAPORE ENC TO BE RELEASED ON 29TH AUGUST 2019

| | | |
|--------------------------|---|---|
| ENC Name | : | SG5C4039 |
| Location | : | Western Approaches to Main Strait |
| Coverage | : | Lat 01° 01·50' N 01° 13·70' N Long 103° 31·20' E 103° 49·00' E |
| Compilation Scale | : | 1 : 22 000 |
| Date Released | : | 29 th August 2019 |
| Description | : | This new edition includes revised anchorages, updated bathymetry details covering western approaches to Main Strait. The existing cell of the same name released on 17 th July 2017 will be superseded. |

| | | |
|--------------------------|---|---|
| ENC Name | : | SG5C4041 |
| Location | : | Pulau Sebarok to Changi |
| Coverage | : | Lat 01° 07·40' N 01° 19·60' N Long 103° 45·60' E 104° 04·70' E |
| Compilation Scale | : | 1 : 22 000 |
| Date Released | : | 29 th August 2019 |
| Description | : | This new edition includes updated bathymetry and covering Pulau Sebarok to Changi. The existing cell of the same name released on 27 th December 2018 will be superseded. |

II

NOTICES TO MARINERS AND CHART CORRECTIONS

*(NM 75/2019) NUMERICAL INDEX TO NOTICES TO MARINERS OF 2019 (1 TO 74)

| MONTH | NOTICES TO MARINERS NO. |
|---------------|-------------------------|
| JANUARY 2019 | 1 to 13 |
| FEBRUARY 2019 | 14 to 22 |
| MARCH 2019 | 23 to 39 |
| APRIL 2019 | 40 to 53 |
| MAY 2019 | 54 to 59 |
| JUNE 2019 | 60 to 74 |

| CHART NO. | PUBLISHED | YEAR | NOTICES TO MARINERS NO. |
|-----------|--------------|------|--|
| GSP1, SP1 | 3 Ed 15/1/18 | 2019 | 02-03-14-23-24-25-26-27-40-60-61 |
| 200 | 4 Ed 1/9/15 | 2019 | 04-15-28-62-63 |
| 201 | 6 Ed 15/9/17 | 2019 | 05-16-29-41-42 |
| 202 | 8 Ed 15/9/16 | 2019 | 05-06-29-30-31-32-41-54-64-65-66-67-71 |
| 500 | 8 Ed 15/9/17 | 2019 | 05-06-17-29-30-33-41 |
| 501 | 7 Ed 1/9/15 | 2019 | 26-30-33 |
| 502 | 7 Ed 1/9/15 | 2019 | 07-25-27-34-43-44 |
| 503 | 5 Ed 15/8/14 | 2019 | 31-54-66-67-71 |

II

NOTICES TO MARINERS AND CHART CORRECTIONS

GSP1/SP1 3 Ed 15/1/18 Last NM 61/2019 (Maritime and Port Authority of Singapore) **NM 76/2019**

Amend legend to, *VHF 12*, centred on: 1°14·65'N 103°51·47'E

201 6 Ed 15/9/17 Last NM 64/2019 (Royal Malaysian Navy Notice No. 5/118/19) **NM 77/2019**

Replace  Wk with  Wk 1°25·29'N 103°06·66'E

202 8 Ed 15/9/16 Last NM 71/2019 (Royal Malaysian Navy Notice No. 5/118/19) **NM 77/2019**

Replace  Wk with  Wk 1°25·29'N 103°06·66'E

500 8 Ed 15/9/17 Last NM 41/2019 (Royal Malaysian Navy Notice No. 5/118/19) **NM 77/2019**

Replace  Wk with  Wk 1°25·29'N 103°06·66'E

II

TEMPORARY AND PRELIMINARY NOTICES

***(NM 78T/2019)** : **TEMASEK FAIRWAY TEMPORARY RE-ALIGNMENT - DREDGING WORKS**

Remarks : Temasek Fairway will be temporary re-aligned due to dredging works within fairway limits. (refer to Maritime and Port Authority of Singapore, Port Marine Notice 49/2019)

Working Period : With effect from 31 May 2019 to 30 November 2019, 24 hours daily

1. The working areas are bounded by the following geographical positions:

| (WGS84 Datum) | | |
|----------------|--------------|---------------|
| Working Area A | Latitude (N) | Longitude (E) |
| Point 1 | 1° 15.223' | 103° 39.279' |
| Point 2 | 1° 14.695' | 103° 39.492' |
| Point 7 | 1° 14.613' | 103° 39.292' |
| Point 8 | 1° 15.140' | 103° 39.079' |
| | | |
| Working Area B | Latitude (N) | Longitude (E) |
| Point 2 | 1° 14.695' | 103° 39.492' |
| Point 3 | 1° 13.884' | 103° 39.819' |
| Point 6 | 1° 13.803' | 103° 39.619' |
| Point 7 | 1° 14.613' | 103° 39.292' |
| | | |
| Working Area C | Latitude (N) | Longitude (E) |
| Point 3 | 1° 13.884' | 103° 39.819' |
| Point 4 | 1° 13.239' | 103° 40.079' |
| Point 5 | 1° 13.164' | 103° 39.876' |
| Point 6 | 1° 13.803' | 103° 39.619' |

2. The re-aligned boundaries of Temasek Fairway are bounded by a line joining the following geographical positions:

| (WGS84 Datum) | | | |
|-------------------------------|--------------|---------------|----------------------------------|
| | Latitude (N) | Longitude (E) | |
| Temasek Fairway line joining: | 1° 16.121' | 103° 39.216' | |
| | 1° 15.955' | 103° 39.216' | Jurong Empat Buoy (New position) |
| | 1° 14.310' | 103° 39.938' | Jurong Satu Buoy (New position) |
| to: | 1° 13.702' | 103° 40.138' | |
| Temasek Fairway line joining: | 1° 12.967' | 103° 39.478' | |
| | 1° 13.707' | 103° 39.366' | Temasek Buoy (New position) |
| | 1° 14.179' | 103° 39.176' | F2-DDJV-4 Buoy (New position) |
| | 1° 15.038' | 103° 38.830' | F2-DDJV-3A Buoy (New position) |
| to: | 1° 15.440' | 103° 38.709' | F2-DDJV-3 Buoy (New position) |

II TEMPORARY AND PRELIMINARY NOTICES

3. The following buoy has been removed:

| Buoy Name | Type | Light Characteristic | Latitude (N) | Longitude (E) |
|------------|--------------------------------|-------------------------|--------------|---------------|
| F2-DDJV-3B | Red Pillar with can topmark | Fl(2)R.7s | 1° 14.633' | 103° 39.342' |

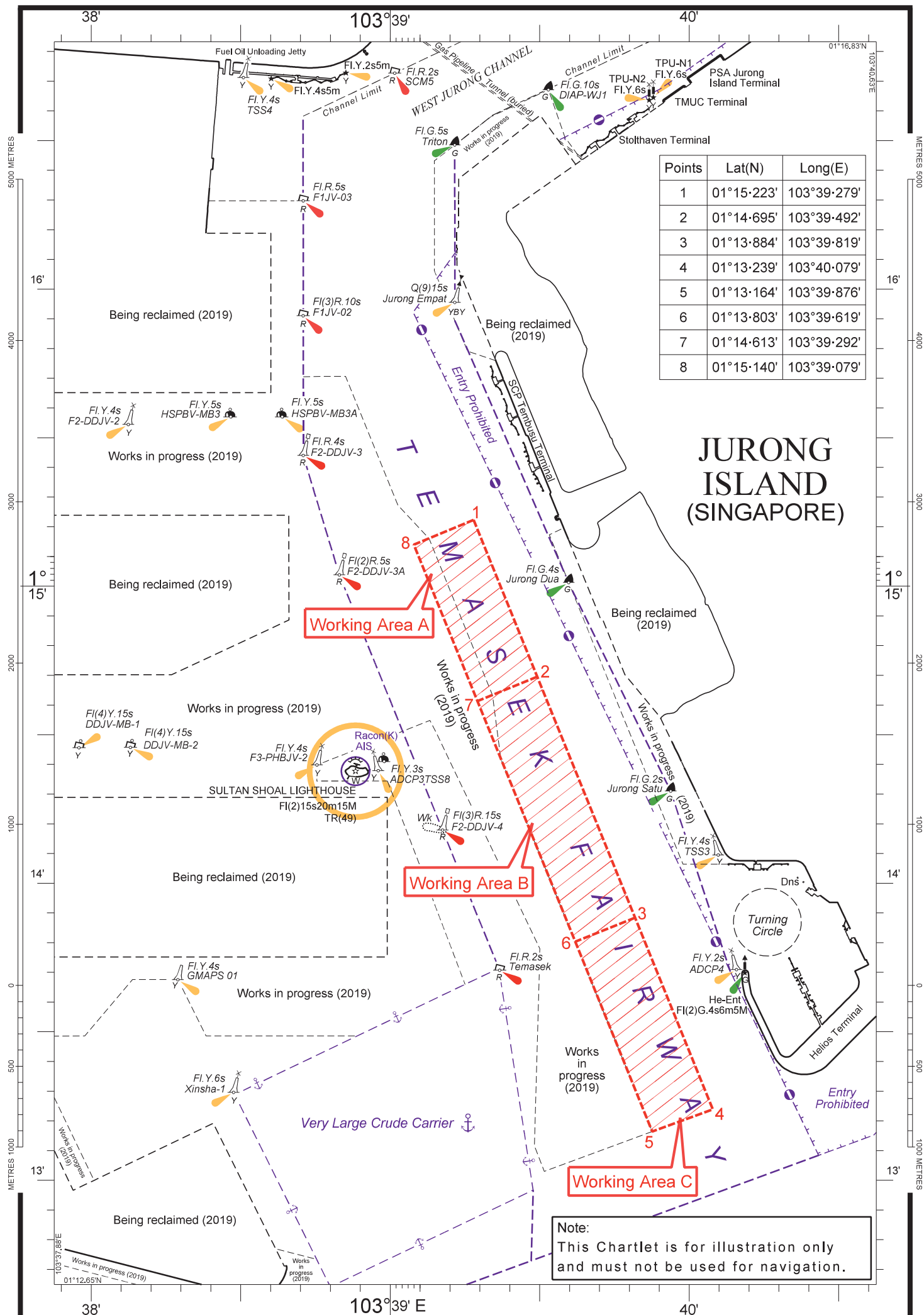
4. Mariners are advised to refer to the latest Port Marine Notices available at the MPA website for the latest information and navigate with caution.

5. Navigational warning broadcast will be promulgated by Singapore VTIS on VHF Channel 22 and NAVTEX. Mariners are to maintain a listening watch.

Charts affected : Singaporean GSP1/SP1, 202, 500, 501, BA 4030, BA 4031, BA 4033, BA 4038 and BA 4040

Note: Former notice 9T/2019 is cancelled.

Source: Maritime and Port Authority of Singapore



III NAVIGATIONAL INFORMATION

*(NM 79/2019)

SINGAPORE PORT MARINE NOTICES/CIRCULARS

The Port Marine Notices/Circulars shortlisted below would be of particular interest to Mariners. Details and complete list of Port Marine Notices/Circulars are available at this link:

<http://www.mpa.gov.sg/web/portal/home/port-of-singapore/circulars-and-notice>

| PMN No. | Subject |
|----------------|--|
| 4/2019 | Demolition and removal of existing floating sea panels and concrete walkway on St John's Island |
| 8/2019 | Reclamation works off Changi East |
| 10/2019 | Works off Small Craft A (ASCA) Anchorage |
| 11/2019 | Works off west of Jurong Island |
| 16/2019 | Works at Tuas Terminal Phase 1 |
| 17/2019 | Operation of temporary jetty and RoRo ramp off east of Tuas View |
| 18/2019 | Works at Tuas Western coast |
| 21/2019 | Installation of floating sea barrier off Changi East |
| 22/2019 | Installation of floating sea barrier off Changi Beach Park |
| 27/2019 | Repair of damaged revetments off PA-Water Venture Sembawang |
| 28/2019 | Construction of jetties off Jurong Island Causeway |
| 30/2019 | Reclamation work at Pulau Tekong |
| 31/2019 | Mooring and unmooring of vessels off Pulau Tekong |
| 34/2019 | Repair works in the coast of Sentosa Island |
| 36/2019 | Reclamation work at Tuas View, off Temasek Fairway |
| 37/2019 | Mooring and unmooring of vessels at Tuas Finger One project area |
| 40/2019 | Dredging works off Sultan Shoal Lighthouse |
| 42/2019 | Dredging works off Jurong Terminal |
| 46/2019 | Works at Tuas Terminal Phase 2 |
| 47/2019 | Supply and delivery of sand at Tuas View Extension |
| 48/2019 | Cable laying works in the East Johor Strait |
| 49/2019 | Dredging works in Temasek Fairway |
| 50/2019 | Construction of outfall structure and installation of silt curtains off Changi East Staging Ground |

III NAVIGATIONAL INFORMATION

| | |
|---------|--|
| 52/2019 | Installation of floating sea barrier off Sentosa |
| 53/2019 | Demolition works at Southern Tuas Basin |
| 54/2019 | Reclamation works at Ayer Merbau Basin |
| 55/2019 | Laying of submarine cables south of Tuas View Extension |
| 56/2019 | Dredging works off Pasir Panjang Terminal |
| 57/2019 | Transport of sand material to stockpile area and soil investigation works at Tuas View Extension |
| 58/2019 | Dredging work off Eastern Anchorage |

| PMC No. | Subject |
|----------------|--|
| 2/2019 | Maritime and Port Authority of Singapore (Dangerous Goods, Petroleum and Explosives) Regulations 2005 - Weight limitation of dangerous goods |
| 5/2019 | Changes to the fourth and fifth schedules of the Strategic Goods (Control) Regulations (SGCR) |
| 10/2019 | Maritime and Port Authority of Singapore revokes Southernpec (Singapore) Pte Ltd's bunker craft operator licence |
| 11/2019 | Reception facilities for residues disposal arising from exhaust gas cleaning systems (Scrubbers) |
| 12/2019 | Maritime and Port Authority of Singapore revokes Southernpec (Singapore) Pte Ltd's bunker supplier licence |

*Source: Maritime and Port Authority of Singapore

III AMENDMENTS TO PUBLICATIONS

*(NM 80/2019) UPDATING OF PUBLICATION “SINGAPORE PORT INFORMATION 2018/2019”

CHARACTERISTICS OF AIDS TO NAVIGATION

1. Page 132

Delete the following:

| Name of Beacon/ Buoy | Position Lat. N Long. E Deg Min | Structure, Colour & Shape | Light Characteristic | Owner |
|-------------------------|--|------------------------------|-------------------------|------------------------------|
| F2-DDJV-W2 | 01°15·140' 103°39·079' | West Cardinal | VQ(9)10s | DIAP-DAELIM Joint Venture |
| F2-DDJV-E2 | 01°15·223' 103°39·279' | East Cardinal | Q(3)15s | DIAP-DAELIM Joint Venture |
| F2-DDJV-E1 | 01°14·208' 103°39·688' | East Cardinal | Q(3)15s | DIAP-DAELIM Joint Venture |
| F2-DDJV-W1 | 01°14·317' 103°39·411' | West Cardinal | VQ(9)10s | DIAP-DAELIM Joint Venture |

Source: Maritime and Port Authority of Singapore

IV

REPRINT OF MARITIME SAFETY INFORMATION

The following Maritime Safety Information have been shortlisted, as they would be of particular interest to mariners.

TT175

VESSELS IN EAST JOHOR STRAIT ARE ADVISED TO NAVIGATE WITH PARTICULAR ALERTNESS AND CAUTION WHEN NEAR THE PROJECT AREAS OFF PULAU TEKONG, CHANGI AND MALANG PAPAN AS SHALLOW WATER AREAS EXIST. VESSELS ARE REMINDED TO PROCEED AT A SAFE SPEED AND MAINTAIN A PROPER LOOK-OUT, PARTICULARLY FOR TUGS AND BARGES NAVIGATING NEAR THE PROJECT AREAS AND PASSENGER FERRIES CROSSING BETWEEN CHANGI AND PULAU TEKONG AND VICINITY OF PASIR GUDANG.

TT273

ALL VESSELS ARE ADVISED TO NAVIGATE WITH CAUTION, COMPLY WITH THE COLREGS, MAINTAIN VHF RADIO WATCH AND LISTEN TO TRAFFIC INFORMATION WHEN NAVIGATING IN THE SINGAPORE STRAIT AND PORT WATERS. MARINERS ARE ALSO ADVISED TO KEEP A GOOD LOOKOUT OF FREQUENT FERRIES CROSSING THE SINGAPORE STRAIT.

TT363 (AMENDED ON 140821UTC APRIL 2019)

MARINERS ARE REMINDED NOT TO ANCHOR IN ALL AREAS IN THE TSS, INCLUDING PRECAUTIONARY AREAS OF THE STRAITS OF MALACCA AND SINGAPORE AS WELL AS BETWEEN THE LANDWARD LIMITS OF THE TSS AND APPROACHES TO THE PORTS. VESSELS ENTERING ANY PORT IN ANY LITTORAL STATES ARE TO ANCHOR IN THE ANCHORAGES DESIGNATED BY THE RESPECTIVE LITTORAL STATES. MARINERS ARE ALSO REMINDED THAT EVERY CARE SHOULD BE TAKEN TO AVOID ANCHORING IN THE VICINITY OF SUBMARINE CABLES OR PIPELINES.

TT399

VESSELS ARRIVING TO SINGAPORE OR TRANSITING THROUGH THE STRAIT ARE RECOMMENDED TO UPDATE THEIR DESTINATION ACCURATELY IN THE AIS TO ENHANCE SITUATIONAL AWARENESS FOR OTHER TRAFFIC IN THE VICINITY. EG: SG-PEBGB FOR PILOT EASTERN BOARDING GROUND BRAVO.

TT418

WEST BOUND DEEP DRAFT VESSELS AND VLCCS ARE REMINDED TO COMPLY WITH THE RULES OF VESSELS NAVIGATING THROUGH THE STRAITS OF MALACCA AND SINGAPORE(SOMS). THEY SHALL ALLOW FOR AN UKC OF AT LEAST 3.5 METRES AT ALL TIMES DURING THE ENTIRE PASSAGE THROUGH THE SOMS AND AS FAR AS IT IS SAFE & PRACTICABLE, PROCEED AT A SPEED OF NOT MORE THAN 12 KTS OVER THE GROUND IN THE WESTBOUND LANE OF THE SINGAPORE STRAIT (BETWEEN SOUTH OF ST JOHN'S ISLAND & RAFFLES LIGHTHOUSE).

THEY ARE ADVISED TO BROADCAST, 8 HOURS BEFORE ENTERING THE TSS, NAVIGATIONAL INFORMATION GIVING NAME, DEADWEIGHT, DRAUGHT, SPEED AND TIMES OF PASSING HORSBURGH LIGHTHOUSE AND RAFFLES LIGHTHOUSE.

TT426

ALL MARINERS ARE REMINDED TO NAVIGATE WITH CAUTION IN THE PRECAUTIONARY AREAS AND TSS, MAINTAIN A GOOD LOOKOUT FOR CROSSING TRAFFIC. VESSELS INTENDING TO CROSS THE TSS SHALL DO SO ONLY WHEN IT IS SAFE AND SHALL AT ALL TIMES COMPLY WITH THE COLREGS.

TT430(AMENDED ON 090050UTC APRIL 2019)

THE FOLLOWING ATONS AIS ARE TEMPORARILY REMOVED FOR UPGRADING.

ATONS WITH AIS TEMPORARILY REMOVED FOR UPGRADING:

1. ANGLER BUOY

MARINERS ARE ADVISED TO NAVIGATE WITH CAUTION

TT440

A NUMBER OF UNKNOWN VESSELS ARE OBSERVED ANCHORED IN THE TSS/PRECAUTIONARY AREA SOUTH OF TG. RAMUNIA AT APPROXIMATE POSITION 01°17.91'N, 104°14.92'E.

ALL VESSELS ARE ADVISED TO KEEP A GOOD LOOK OUT AND PROCEED WITH CAUTION WHEN PASSING THIS AREA IN THE SINGAPORE STRAIT.

TT527

RACON DELTA RADAR SIGNAL TRANSMISSION IN POSITION LAT 01°03.60'N LONG 103°38.85'E IS REPORTED NOT WORKING. ALL VESSELS ARE ADVISED TO NAVIGATE WITH EXTRA CAUTION.

TT550

CABLE VESSEL ASEAN EXPLORER IS CARRYING OUT CABLE REPAIR WORKS IN THE TSS SECTOR 9 (VTIS EAST) OF THE SINGAPORE STRAIT IN POSITION 01°25.965'N 104°32.318'E FROM 20 JUNE 2019 TO 28 JUNE 2019. VESSELS ARE ADVISED TO NAVIGATE WITH CAUTION WITH EXTRA CAUTION.

IV

REPRINT OF MARITIME SAFETY INFORMATION

TT552 (AMENDED 180250H JUN 2019)

A TEMPORARY EXCLUSION ZONE HAS BEEN ESTABLISH FOR WRECK REMOVAL OPERATIONS ON THE SUNKEN VESSEL THORCO CLOUD IN THE EASTBOUND LANE OF THE SINGAPORE STRAIT. OPERATION AREA IS ABOUT 1.7NM NE OF BATU BERHANTI BEACON AND INVOLVED IN WRECK REMOVAL VESSEL HONG BANG 6 (3FFP8). THE 24 HOURS OPERATIONS ARE SCHEDULED FROM 18 JUN TO 31 AUGUST 2019. THE 400M WIDE WORKING AREA WILL BE MARKED BY THE FOLLOWING BUOYS (WGS84).

| LAT (N) | LONG (E) | CARDINAL MARK | LIGHT (WHITE), RANGE (NM) |
|-----------|------------|---------------|---------------------------|
| 01°12.258 | 103°53.919 | TC1 WEST | Q(9)10S, 6NM |
| 01°12.488 | 103°54.100 | TC2 NORTH | Q.6NM |
| 01°13.051 | 103°55.042 | TC3 NORTH | Q.NM |
| 01°12.270 | 103°54.156 | TC4 SOUTH | Q(6)+LFL10S.6NM |
| 01°12.801 | 103°55.040 | TC5 SOUTH | Q(6)+LFL10S.6NM |

CHARTS AFFECTED: SP1/GSP1, 202, 502, BA4037 AND BA4041. MARINERS ARE ADVISED TO NAVIGATE WITH CAUTION AND KEEP CLEAR OF WORKING AREA.

TT553

CABLE VESSEL 'ASEAN PROTECTOR' IS CARRYING OUT CABLE LAYING WORKS IN THE TSS AND PRECAUTIONARY AREA OF SECTOR 7 (VTIS WEST) OF THE SINGAPORE STRAIT FROM 16 JUNE 2019 TO 30 JUNE 2019. VESSELS ARE ADVISED TO NAVIGATE WITH CAUTION, PROCEED AT SAFE SPEED AND KEEP WELL CLEAR OF THE CABLE VESSEL.

TT557

SURVEY BOAT SSE MAZU IS CONDUCTING HYDROGRAPHIC SURVEY IN THE SINGAPORE STRAITS IN THE EAST BOUND LANE.

BOUNDED BY THE FOLLOWING COORDINATES FROM 25 JUNE 2019 TO 26 JUNE 2019, DAYLIGHT HOURS ONLY.

| | | |
|---|----------------|-----------------|
| A | 01°15'04.600"N | 103°22'19.073"E |
| B | 01°14'59.171"N | 103°22'46.061"E |
| C | 01°12'46.265"N | 103°26'53.392"E |
| D | 01°13'47.592"N | 103°23'53.704"E |
| E | 01°15'04.600"N | 103°22'19.073"E |

BOUNDED BY THE FOLLOWING COORDINATES FROM 26 JUNE 2019 TO 28 JUNE 2019, DAYLIGHT HOURS ONLY.

| | | |
|---|----------------|-----------------|
| A | 01°17'07.171"N | 103°23'24.541"E |
| B | 01°15'11.820"N | 103°25'11.955"E |
| C | 01°14'10.853"N | 103°24'15.310"E |
| D | 01°14'58.851"N | 103°22'56.305"E |

VESSELS PASSING THE VICINITY ARE ADVISED TO GIVE A WIDE BERTH AND NAVIGATE WITH CAUTION.

TT961

VESSELS INTENDING TO CROSS THE TRAFFIC SEPARATION SCHEME (TSS) OR PRECAUTIONARY AREAS IN THE SINGAPORE STRAIT DURING THE HOURS OF DARKNESS ARE RECOMMENDED TO DISPLAY THE NIGHT SIGNALS CONSISTING OF 3 ALL ROUND GREEN LIGHTS IN A VERTICAL LINE AS DETAILED IN THE MARITIME AND PORT AUTHORITY OF SINGAPORE'S PORT MARINE CIRCULAR, 04 OF 2013 DATED 7 MAY 2013.

SR123 (AMENDED 170105UTC APRIL 2019)

ALL VESSELS ARE ADVISED TO MAINTAIN A CONSTANT VISUAL AND RADAR WATCH FOR SMALL CRAFT AND REPORT ANY SUSPICIOUS ACTIVITIES IN THE SINGAPORE STRAIT TO VTIS SINGAPORE.

ISSUED BY SINGAPORE PORT OPERATIONS CONTROL CENTRE (as at 27th June 2019)

V
EXTRACT OF ADMIRALTY NOTICES TO MARINERS
FOR DUAL-BADGED CHARTS

These notices can also be accessed directly from UKHO Website:

<http://www.admiralty.co.uk/maritime-safety-information/admiralty-notices-to-mariners>

NIL

Update to Admiralty Notices to Mariners No. 26 of 2019 dated 27th June 2019

HYDROGRAPHIC NOTE - Instructions

1. Mariners are requested to notify the Chief Hydrographer, Maritime and Port Authority of Singapore, when new or suspected dangers to navigation are discovered, changes are observed in aids to navigation or where corrections to nautical publications may be necessary. Reports, which cannot be confirmed or are lacking in certain details should not be withheld.
2. Any ambiguities of time, positioning and depth should be stressed and any firm expectation of being able to check the information provided on a following voyage should be mentioned.
3. Mariners using satellite position fixing systems, eg. GPS, should provide details of equipment and datum used (where applicable). Where bearings (true or magnetic) are taken visually or by radar to fix a position, it should include more than two objects in order to provide a check on its accuracy. A position may also be defined by bearing and distance from a conspicuous object eg. beacon, lighthouse etc.
4. The note should include a tracing or a digital image of the chart used and the details should be clearly marked.
5. Echo sounders frequently register greater depths than the advertised maximum depth for the equipment, eg. a trace appearing at 50 metres may be in fact be 550 metres or even 1050 metres for equipment whose maximum depth is 500 metres. Erroneous depths caused by 2nd transmission error can usually be recognised by the following:
 - (a) the tracing being weaker than normal for the depth registered,
 - (b) the trace appearing to pass through the transmission line,
 - (c) the feathery nature of the trace.
6. Upon receipt of a hydrographic note, a Notice to Mariners may be issued. The sender's vessel or name is quoted as the source unless the same information is also received in foreign Notices to Mariners.
7. Reports of shoals, uncharted dangers and defects in aids to navigation may also be made to the appropriate Singapore Port Operations Control Centre on VHF Channels 10, 12, 14, 68 or 73.

HYDROGRAPHIC NOTE

To:

Chief Hydrographer
Maritime and Port Authority of Singapore
7B Keppel Road #20-00 Tanjong Pagar Complex
Singapore 089055

Tel : (65) 6325 2027
Fax : (65) 6226 1076
Email : hydrographic@mpa.gov.sg

Sender's Contact Details :

Date :

Name of Vessel :

Address of Sender :

Tel : Fax :

Email :

Nature of Observation :

General Location :

Subject :

Position : Lat. Long.

Charts Used :

Date & Time of Observation :

Details :

.....

.....

Attachment :

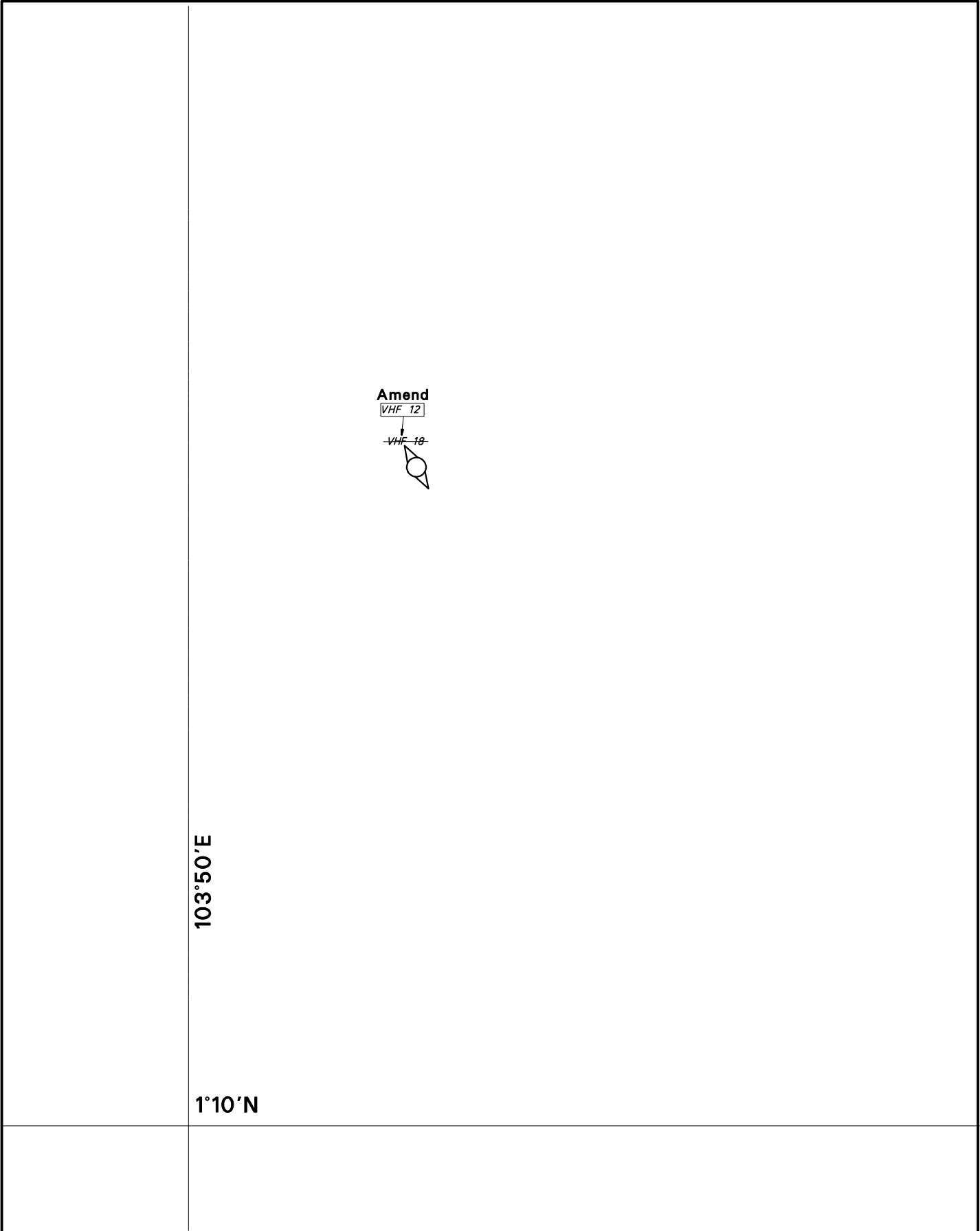
Equipment Used :

Type of Position Fixing : GPS / DGPS Others :

Type of Echo Sounder :

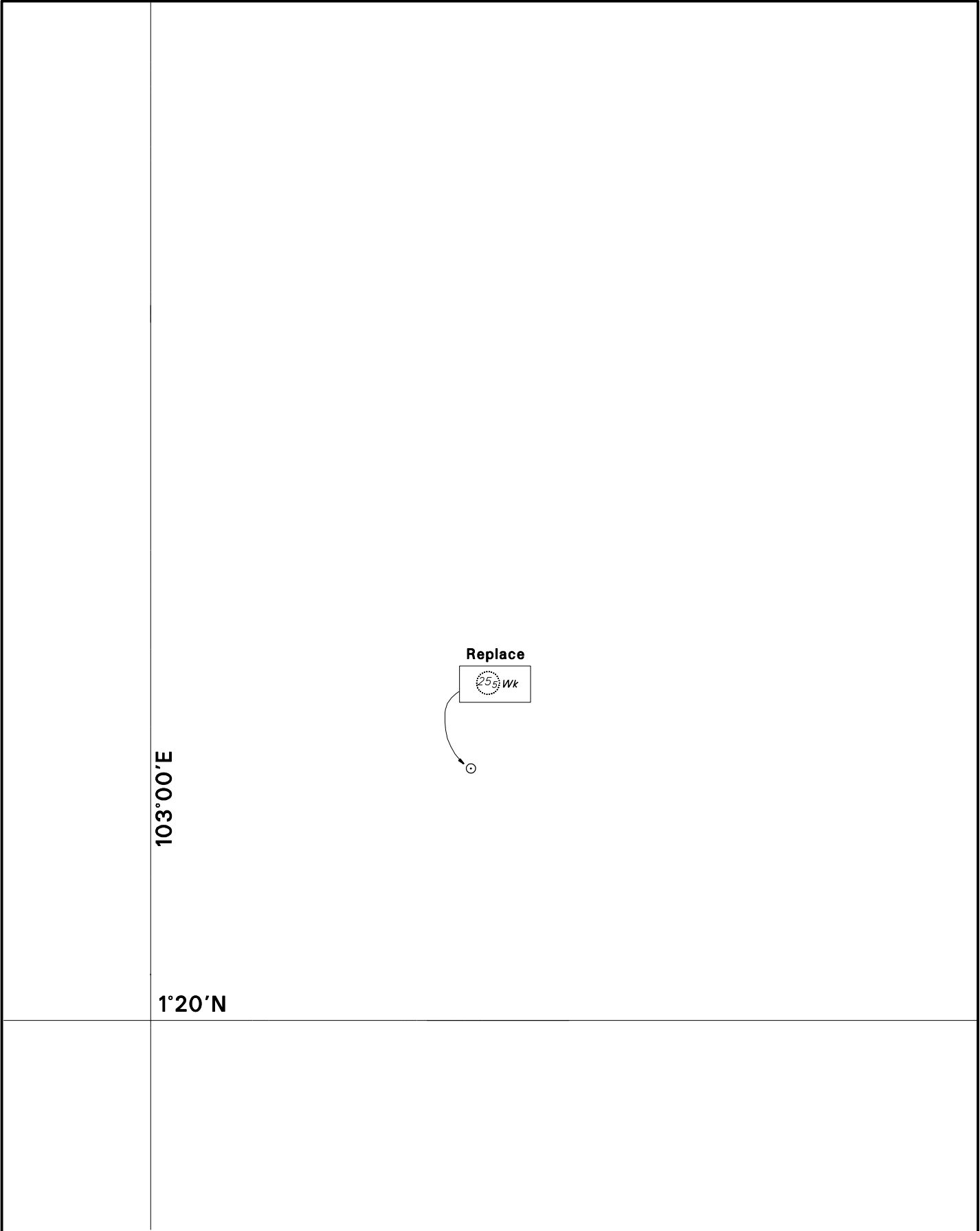
Name and Signature :

Ship's/Company's Stamp :



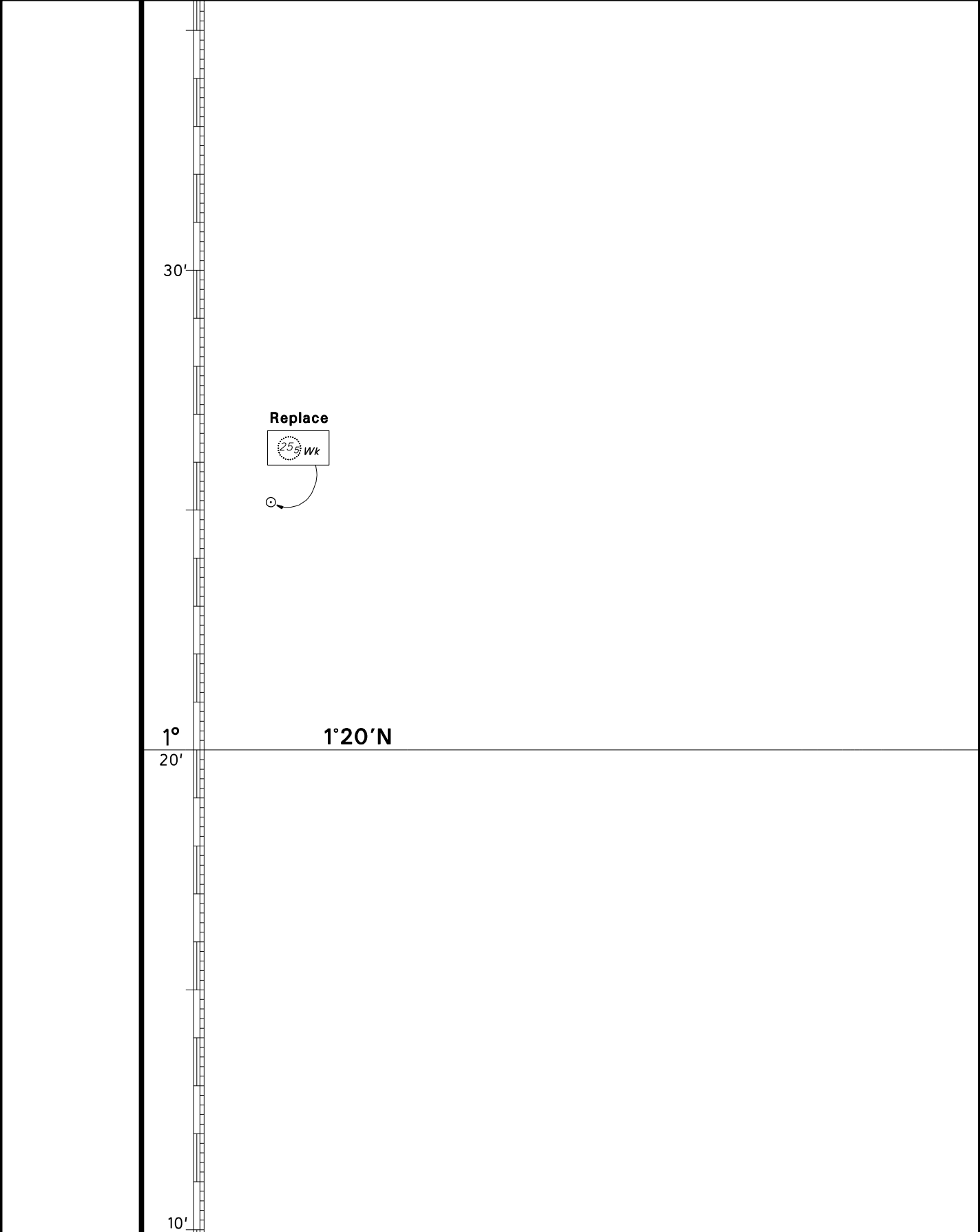
| CORRECTION NO. | SNM EDN NO. | LAST CORR N NO. | CHART NO. | Location on Chart | | |
|----------------|-------------|-----------------|-----------|-------------------|---|--|
| | | | | | | |
| 76 | 7/2019 | 61/2019 | GSP1/SP1 | | X | |

Caution: some computer printers might distort the tracings.
Users are advised to check and, if necessary, adjust settings on the printer



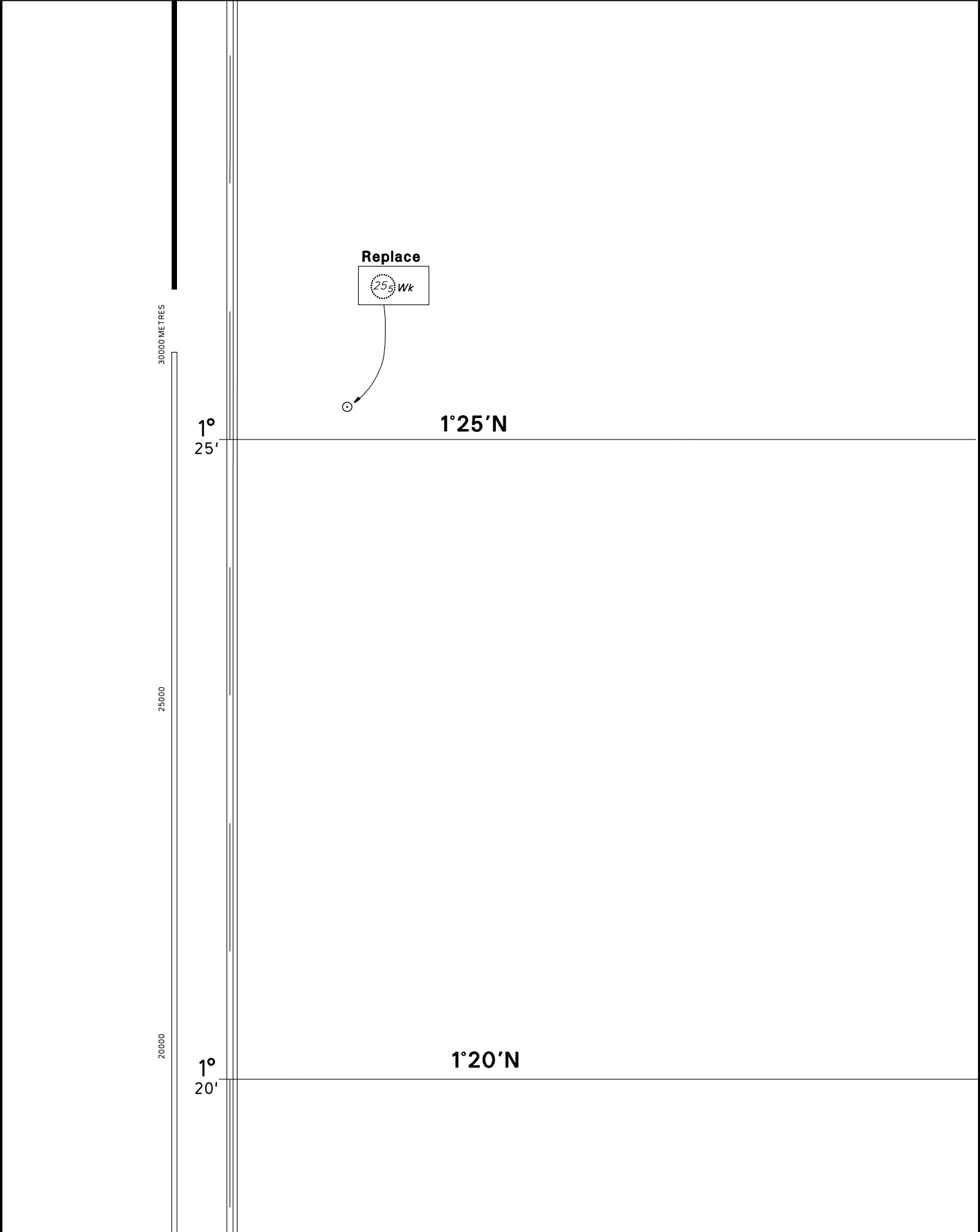
| CORRECTION NO. | SNM EDN NO. | LAST CORR N NO. | CHART NO. | Location on Chart | | |
|----------------|-------------|-----------------|-----------|-------------------|--|---|
| | | | | | | |
| 77 | 7/2019 | 64/2019 | 201 | | | X |

Caution: some computer printers might distort the tracings.
Users are advised to check and, if necessary, adjust settings on the printer



| CORRECTION NO. | SNM EDN NO. | LAST CORR N NO. | CHART NO. | Location on Chart | | |
|----------------|-------------|-----------------|-----------|-------------------|--|--|
| | | | | | | |
| | | | | X | | |

Caution: some computer printers might distort the tracings.
Users are advised to check and, if necessary, adjust settings on the printer



| CORRECTION NO. | SNM EDN NO. | LAST CORR N NO. | CHART NO. | Location on Chart | | |
|----------------|-------------|-----------------|-----------|-------------------|--|--|
| | | | | X | | |
| 77 | 7/2019 | 41/2019 | 500 | | | |

Caution: some computer printers might distort the tracings.
Users are advised to check and, if necessary, adjust settings on the printer