



## SINGAPOREAN NOTICES TO MARINERS

---

	<b>CONTENT</b>	<b>Page</b>
I	Index of Charts & Publications	103
II	New Publications	106
	Notices to Mariners and Chart Corrections	107
	Temporary and Preliminary Notices	110
III	Navigational Information	111
	Amendments to Publications	112
IV	Reprint of Radio Navigational Warnings	115
V	Reprint of Admiralty Notices to Mariners for Dual Badged Charts	116

---

**The monthly Notices to Mariners contain corrective information affecting charts published by the Hydrographic Department, Maritime and Port Authority of Singapore. The information contained in these Notices should be updated on the charts affected. Notices under Section II apply only to the particular Singaporean Chart(s) indicated.**

---

Mariners are requested to notify the Chief Hydrographer, Maritime and Port Authority of Singapore, immediately on the discovery of new dangers or suspected dangers to navigation and of changes or defects in aids to navigation. See Hydrographic Note on back page.

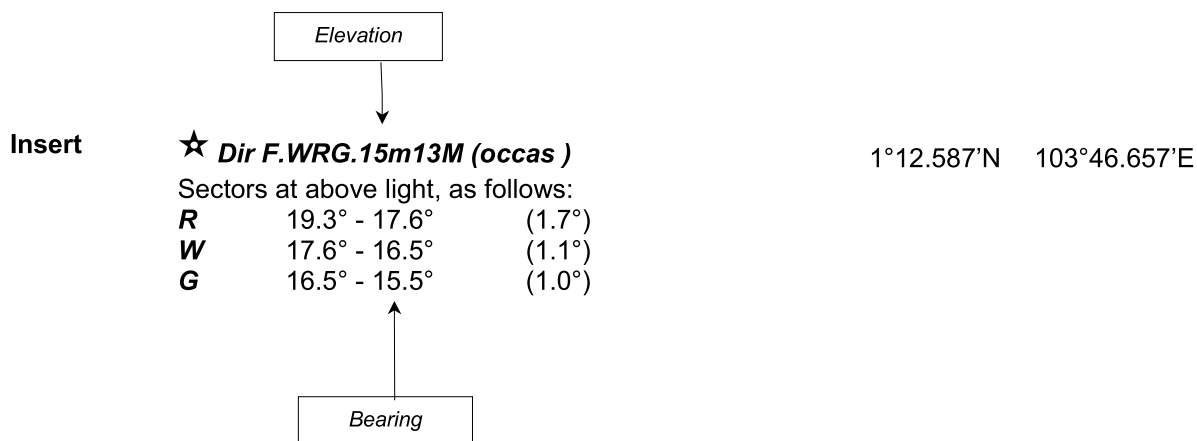
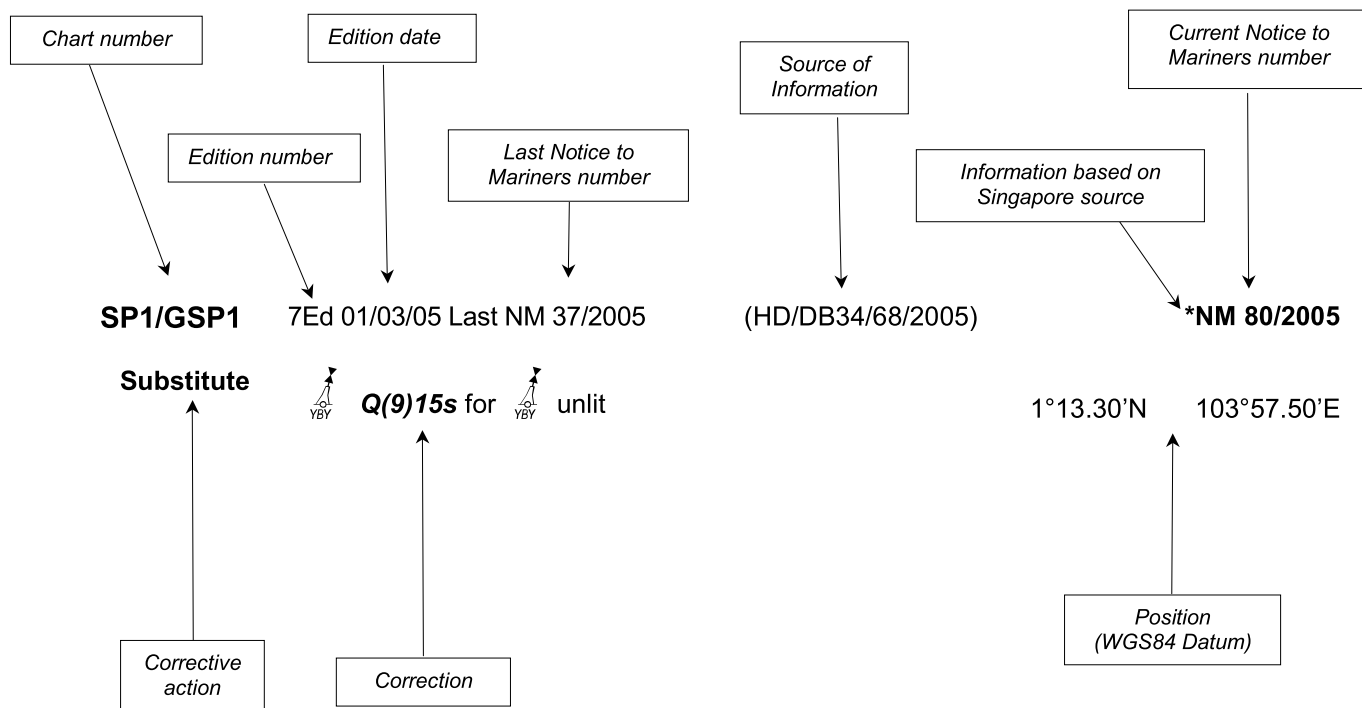
The monthly Singaporean Notices to Mariners can be accessed directly from the MPA website:  
<http://www.mpa.gov.sg/infocentre/publications/noticesmari.htm>  
This service is offered free of charge.

Hydrographic Department  
Maritime and Port Authority of Singapore  
460 Alexandra Road PSA Building #20-00  
Singapore 119963

Tel : (65) 6375 1227  
Fax : (65) 6278 7646

## EXPLANATION OF FORMAT

The elements of a typical chart correction are explained below.



### Notes:

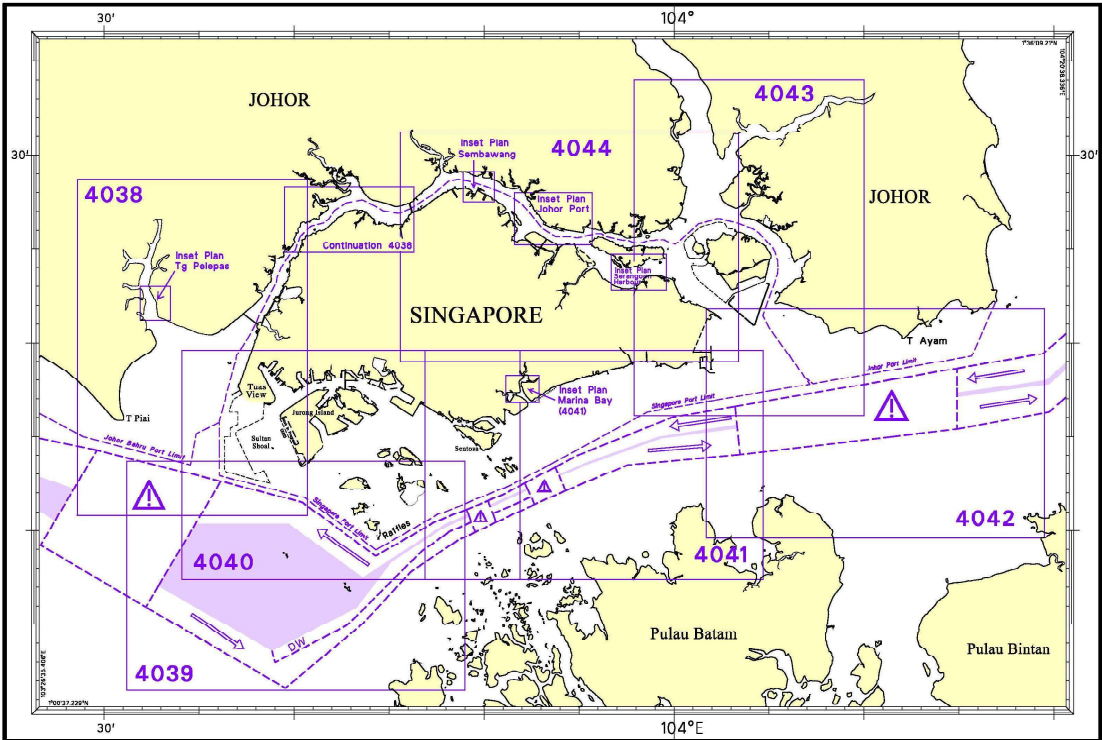
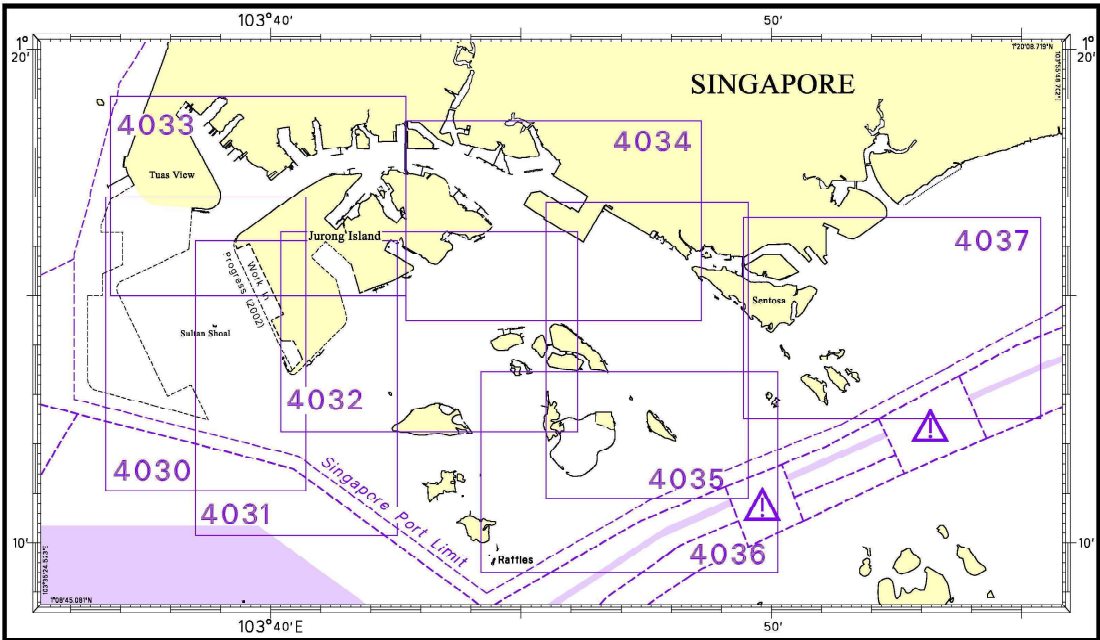
- a) Notice to Mariners number followed by:
  - T** indicates a Temporary Notice (eg. \*NM 80T/2005).
  - P** indicates a Preliminary Notice (eg. \*NM 80P/2005).
- b) Bearings are referred to True Compass in degrees clockwise from 000° to 359°. Bearings related to lights are from seaward.
- c) Heights and elevations are above Mean High Water Springs.

I  
INDEX OF CHARTS AND PUBLICATIONS

NOTICES	DESCRIPTION	PAGE	NOTICES	DESCRIPTION	PAGE
	INDEX OF SINGAPOREAN CHARTS	104			
	INDEX OF DUAL BADGED CHARTS	105			
	New Edition DUAL BADGED CHARTS	106			
*43	SP1/GSP1	107			
*44	SP1/GSP1	107			
*45	SP1/GSP1	107			
*46	SP1/GSP1	107			
*47	SP1/GSP1	107			
*48	SP1/GSP1	107			
*49	SP1/GSP1	107			
*50	SP1/GSP1	107			
*51	SP1/GSP1	107			
*52	SP1/GSP1	108			
*53	SP1/GSP1	108			
	202	108			
	501	109			
	502	109			
	503	109			
54	201	108			
*55	Port Marine Notices	111			
*56	Updating of Publication "SINGAPORE PORT INFORMATION 2006/2007 EDITION"	112			



I  
**INDEX OF CHARTS AND PUBLICATIONS**  
INDEX OF DUAL BADGED CHARTS



## II NEW PUBLICATIONS

### NEW EDITION DUAL BADGED CHART PUBLISHED ON 24 MAY 2007

**Chart No** : 4037  
**Title** : Port of Singapore – Keppel Harbour, Tanjong Pagar Terminal and Approaches  
**Coverage** Lat 1° 12.52' N 1° 16.59' N  
 Long 103° 49.40' E 103° 55.34' E  
**Scale** : 1 : 10 000  
**Date Published** : 24 May 2007  
**Size of chart** : 1100.8 x 750.1mm  
**Remarks** : This new edition includes updated surveys covering East Keppel Fairway, Eastern Fairway, new submarine pipelines and cables from Sentosa to Pulau Seringat and the One° 15 Marina Club. The existing chart of the same number published on 13 April 2006 is superseded.

---

### NEW EDITION DUAL BADGED CHART PUBLISHED ON 24 MAY 2007

**Chart No** : 4041  
**Title** : Singapore and Indonesia  
 Pulau Sebarok to Changi  
**Coverage** Lat 1° 07.40' N 1° 19.60' N  
 Long 103° 46.90' E 104° 04.70' E  
**Scale** : 1 : 30 000  
**Date Published** : 24 May 2007  
**Size of chart** : 1100.6 x 749.5mm  
**Remarks** : This new edition includes updated surveys covering East Keppel Fairway, West Keppel Fairway, Eastern Fairway and anchorages, new submarine pipelines and cables from Sentosa to Pulau Seringat and the One° 15 Marina Club. Inset Plan covering Marina Bay has been removed. The existing chart of the same number published on 1 December 2005 is superseded.

---

**II**  
**NOTICES TO MARINERS AND CHART CORRECTIONS**

<b>SP1/GSP1</b>	1Ed 03/01/07 Last NM 34/2007	(HD/HE025/048/2007)	<b>*NM 43/2007</b>
<b>Delete</b>	 Fl.R.2s, CD1	1°19.87'N	104°01.94'E
		(HD/HE025/049/2007)	<b>*NM 44/2007</b>
<b>Delete</b>	 Fl.G.2s, CD2	1°19.91'N	104°01.84'E
		(HD/HE025/052/2007)	<b>*NM 45/2007</b>
<b>Delete</b>	 PPT-1, Fl.G.5s	1°17.08'N	103°45.20'E
		(HD/HE025/054/2007)	<b>*NM 46/2007</b>
<b>Insert</b>	 <b>TPPT-1, Fl.Y.2s</b>	1°16.87'N	103°44.94'E
		(HD/HE025/055/2007)	<b>*NM 47/2007</b>
<b>Insert</b>	 <b>TPPT-2, Fl.Y.4s</b>	1°17.19'N	103°45.13'E
		(HD/HE025/056/2007)	<b>*NM 48/2007</b>
<b>Insert</b>	 <b>TPPT-3, Fl.Y.6s</b>	1°17.24'N	103°45.41'E
		(HD/HE025/060/2007)	<b>* NM 49/2007</b>
<b>Insert</b>	 <b>Fl.Y.6s, B1</b>	1°25.36'N	103°53.84'E
		(HD/HE025/061/2007)	<b>* NM 50/2007</b>
<b>Insert</b>	 <b>Fl.Y.4s, B2</b>	1°25.43'N	103°53.72'E
		(HD/HE025/062/2007)	<b>* NM 51/2007</b>
<b>Insert</b>	 <b>Fl.Y.2s, B3</b>	1°25.50'N	103°53.60'E

**II**  
**NOTICES TO MARINERS AND CHART CORRECTIONS**

(HD/HE025/063/2007)

**\* NM 52/2007**

**Relocate**      **!** *Fl.Y.6s, Shimizu 1*  
 (1°25.66'N, 103°53.92'E)  
 (Previous SNM Edn 3/20/2007 is superseded)

1°25.66'N    103°53.59'E

(HD/HY Code L00900507)

**\*NM 53/2007**

**Insert**      submarine cable, , joining:

1°08.56'N    103°55.35'E  
 1°09.74'N    103°55.58'E  
 1°10.74'N    103°54.89'E  
 1°10.90'N    103°54.92'E  
 1°12.79'N    103°58.32'E  
 1°13.28'N    104°02.11'E  
 1°13.70'N    104°04.22'E  
 1°13.94'N    104°04.71'E  
 1°13.93'N    104°05.46'E  
 1°13.59'N    104°06.24'E  
 Chart Border    1°13.64'N    104°07.20'E

**201**      2Ed 15/09/03 Last NM 40/2007      (Admiralty Notices 20/2223/2007)      **NM 54/2007**

**Amend**      light character to *Is0.2s16m12M*      1°41.51'N    101°48.00'E

**202**      5Ed 19/10/06 Last NM 35/2007      (HD/HY Code L00900507)      **\*NM 53/2007**

**Insert**      submarine cable, , joining:

1°08.55'N    103°55.35'E  
 1°09.74'N    103°55.58'E  
 1°10.90'N    103°54.92'E  
 1°12.79'N    103°58.32'E  
 1°13.30'N    104°01.85'E  
 1°13.94'N    104°04.71'E  
 1°13.55'N    104°08.25'E  
 1°13.66'N    104°14.91'E  
 1°13.47'N    104°19.16'E  
 1°14.41'N    104°22.76'E  
 1°18.09'N    104°28.29'E  
 1°20.38'N    104°34.38'E  
 1°20.08'N    104°37.78'E  
 Chart Border    1°17.24'N    104°48.89'E

**II**  
**NOTICES TO MARINERS AND CHART CORRECTIONS**

**501**                    4Ed 21/09/06 Last NM 26/2007                    (HD/HY Code L00900507)                    **\*NM 53/2007**

**Insert**                    submarine cable, , joining:

	Chart Border	1°10.52'N	103°55.05'E
		1°10.74'N	103°54.89'E
		1°10.90'N	103°54.92'E
	Chart Border	1°10.97'N	103°55.05'E

**502**                    3Ed 25/10/05 Last NM 34/2007                    (HD/HY Code L00900507)                    **\*NM 53/2007**

**Insert**                    submarine cable, , joining:

		1°08.56'N	103°55.35'E
		1°09.74'N	103°55.58'E
		1°10.74'N	103°54.89'E
		1°10.90'N	103°54.92'E
		1°12.79'N	103°58.32'E
		1°13.28'N	104°02.11'E
		1°13.70'N	104°04.22'E
		1°13.94'N	104°04.71'E
		1°13.93'N	104°05.46'E
		1°13.59'N	104°06.24'E
		1°13.64'N	104°08.13'E
		1°13.46'N	104°11.45'E
		1°13.59'N	104°14.74'E
		1°13.81'N	104°16.60'E
	Chart Border	1°13.63'N	104°17.31'E

**503**                    2Ed 15/09/04 Last NM 36/2007                    (HD/HY Code L00900507)                    **\*NM 53/2007**

**Insert**                    submarine cable, , joining:

	Chart Border	1°13.47'N	104°11.89'E
		1°13.66'N	104°14.91'E
		1°13.47'N	104°19.16'E
		1°14.41'N	104°22.76'E
		1°18.09'N	104°28.29'E
		1°20.38'N	104°34.38'E
		1°20.08'N	104°37.78'E
	Chart Border	1°19.98'N	104°38.17'E

**II**  
**TEMPORARY AND PRELIMINARY NOTICES**

Nil

### III NAVIGATIONAL INFORMATION

#### \*(NM 55/2007) PORT MARINE NOTICES

These notices can be accessed directly from MPA website:

[http://www.mpa.gov.sg/circulars\\_and\\_notices/portmarine\\_notices/pm\\_notices.htm](http://www.mpa.gov.sg/circulars_and_notices/portmarine_notices/pm_notices.htm)

<b>PMN No.</b>	<b>Subject</b>
59/2007	Construction of bridge across Selat Chermin (Keppel Bay Drive to Pulau Keppel) and breakwater and floating berth at Pulau Keppel (Revision and Extension of PMN No. 154 of 2006)
61/2007	Reclamation at Pulau Tekong (Revision of PMN No. 151 of 2006)
62/2007	Installation of mooring buoy off Pulau Timor
63/2007	Recovery of disused cables
66/2007	A) Maintenance dredging works at Tanjong Pagar, Keppel and Brani Terminals B) Upgrading of Berth K12 at Keppel Terminal (Revision of PMN No. 64 of 2007)
67/2007	A) Jetty construction and dredging works in Damar Laut Basin B) Landing Craft Terminal (LCT) construction in Damar Laut Basin
68/2007	Maintenance dredging works at Pasir Terminal (Off Berths P19-P20)

---

### III AMENDMENTS TO PUBLICATIONS

#### \*(NM 56/2007) UPDATING OF PUBLICATION "SINGAPORE PORT INFORMATION 2006/2007 EDITION"

1 Page 120

#### PASIR PANJANG TERMINAL

Delete the following:

Name of Beacon / Buoy	Position Lat. N Long. E Deg Min	Structure Colour & Shape	Light Characteristic	Owner
PPT-1 Beacon	01 17.084 103 45.205	Green conical on green tubular tower on bund 3m	Fl.G.5s5m3M	MPA

Insert the following:

Name of Beacon / Buoy	Position Lat. N Long. E Deg Min	Structure Colour & Shape	Light Characteristic	Owner
<b>TPPT-1</b>	<b>01 16.874 103 44.942</b>	<b>Yellow pillar</b>	<b>Fl.Y.2s</b>	<b>TOA Corporation</b>
<b>TPPT-2</b>	<b>01 17.194 103 45.131</b>	<b>Yellow pillar</b>	<b>Fl.Y.4s</b>	<b>TOA Corporation</b>
<b>TPPT-3</b>	<b>01 17.238 103 45.407</b>	<b>Yellow pillar</b>	<b>Fl.Y.6s</b>	<b>TOA Corporation</b>

Sources: HD/HE025/050/2007, HD/HE025/054/2007 to HD/HE025/056/2007

2 Page 150 - Item 12

JURONG –TG. SAKUNYIT & JURONG ISLAND (EXXONMOBIL ASIA PACIFIC PTE LTD)  
(1°17.9'N, 103°41.3'E)

Amend the following:

Berth	Length of Berth		Depth Alongside (Year Surveyed)	
	Delete	<b>Insert</b>	Delete	<b>Insert</b>
Jurong-1	360m	<b>346m</b>	-	-
Jurong-2	270m	<b>230m</b>	-	-
Jurong-3	270m	<b>230m</b>	11.8m (2005)	<b>11.8m (2007)</b>
Jurong-4	-	-	8.7m (2005)	<b>8.6m (2007)</b>
Jurong-9	-	-	12.2m (2005)	<b>12.3m (2007)</b>

### III AMENDMENTS TO PUBLICATIONS

Insert the following:

Berth	Length of Berth	LOA of Vessel	Depth Alongside (Year Surveyed)	Controlling Depth In Approaches
<b>Esso Bulk Pier</b>	<b>107m</b>	<b>97m</b>	<b>3.9m (2007)</b>	<b>5.9m</b>

Source: HY Code H00102207

3 Page 152 - Item 16A

JURONG ISLAND (VOPAK TERMINALS SINGAPORE PTE LTD) (1°15.9'N, 103°41.0'E)

Amend the following:

Berth	Depth Alongside (Year Surveyed)		Controlling Depth In Approaches
	Delete	<b>Insert</b>	
OBV 1	-	-	<b>16.5m – from Sinki Fairway and 15.0m from Selat Pandan</b>
OBV 2	16.5m (2006)	<b>16.5m (2007)</b>	

Source: HD/HY Code E00101907

Insert the following:

Berth	Length of Berth	Depth Alongside (Year Surveyed)	Controlling Depth In Approaches
<b>OBV 3</b>	<b>181.5m</b>	<b>11.5m (2007)</b>	<b>16.5m – from Sinki Fairway and 15.0m from Selat Pandan</b>
<b>OBV 4</b>	<b>204m</b>	<b>15.5m (2007)</b>	

Source: HD/HY Code E00101907

4 Page 153 - Item 20

JURONG ISLAND (SINGAPORE REFINING CO PTE LTD) (1°17.6'N, 103°43.0'E)

Delete the following:

Berth	Length of Berth	LOA of Vessel	Depth Alongside (Year Surveyed)	Controlling Depth In Approaches
4	60m	40m – 50m	8.8m (2000)	6.4m

Source: HD/List of Berths dated 30 April 2007

**III**  
**AMENDMENTS TO PUBLICATIONS**

5 Page 155 - Item 28

PULAU BUSING (TANKSTORE) (1°14.4'N, 103°44.7'E)

Amend the following:

Berth	Depth Alongside (Year Surveyed)		Controlling Depth In Approaches	
	Delete	<i>Insert</i>	Delete	<i>Insert</i>
1	16.9m (1998)	<b>16.9m (2007)</b>	15.0m	<b>17.8m from West (Selat Sinki) 16.6m from East (Jong Fairway)</b>
2	17.0m (1998)	<b>17.0m (2007)</b>	15.0m	
3	15.0m (2002)	<b>14.7m (2007)</b>	7.0m	<b>7.0m (130m South of berth)</b>
4	12.5m (2002)	<b>13.5m (2007)</b>	7.0m	<b>7.0m (230m South of berth)</b>
5	14.7m (1998)	<b>14.7m (2007)</b>	-	<b>15.3m from West (Selat Sinki) 15.3m from East (Jong Fairway)</b>
6	8.4m (2002)	<b>8.5m (2007)</b>	5.5m	<b>5.5m (240m East of berth)</b>

Source: HD/HY Code E00101907

6 Page 155 - Item 26

TANJONG PENJURU (CALTEX SINGAPORE PTE LTD)(1°17.7'N, 103°44.3'E)

Amend the following:

Berth	Length of Berth		Depth Alongside (Year Surveyed)		Controlling Depth In Approaches	
	Delete	<i>Insert</i>	Delete	<i>Insert</i>	Delete	<i>Insert</i>
2	360m	<b>314m</b>	14.6m (2001)	<b>14.5m (2007)</b>	13.3m	<b>14.1m</b>
6	123m	<b>115m</b>	13.1m (1995)	<b>11.8m (2007)</b>	-	<b>13.1m</b>

Source: HY Code H00102207

**IV**  
**REPRINT OF RADIO NAVIGATIONAL WARNINGS**

Nil

V  
**REPRINT OF ADMIRALTY NOTICES TO MARINERS  
 FOR DUAL BADGED CHARTS**

These notices can be accessed directly from UKHO Website:

<http://www.ukho.gov.uk/amd/weeklyNms.asp>

**2003 \* SINGAPORE — Jurong Island North-eastwards — Pasir Panjang Terminal and Seraya Power Station Northwards — Dredged area. Coastline. Dredged depths. Berths. Restricted area.**

Source: Maritime and Port Authority of Singapore

**Chart 4034** [previous update 1274/07] WGS84 DATUM

Insert	the accompanying block A, showing new dredged area, coastline and berth, centred on:	1° 16'.96N., 103° 45'.81E.
	the accompanying block B, showing new dredged area and berth and amendments to dredged depths and restricted area, centred on:	1° 17'.55N., 103° 43'.52E.
	limit of restricted area, entry prohibited, pecked line, joining:	1° 17'.235N., 103° 43'.848E. (S border of block B)
		(a) 1° 16'.396N., 103° 44'.777E. (existing limit)
Delete	former limit of restricted area, entry prohibited, pecked line, joining:	1° 17'.235N., 103° 43'.760E. (S border of block B) (a) above

**Chart 4040** [previous update 1850/07] WGS84 DATUM

Insert	limit of restricted area, entry prohibited, pecked line, joining:	(a) 1° 17'.683N., 103° 42'.843E. (existing limit) 1° 17'.613N., 103° 43'.305E. 1° 17'.420N., 103° 43'.642E.
		(b) 1° 16'.396N., 103° 44'.777E. (existing limit)
Delete	former limit of restricted area, entry prohibited, pecked line, joining:	(a)-(b) above

**2016 \* SINGAPORE —Singapore Island — Changi — Changi Point Southwards — Pile.**

Source: Maritime and Port Authority of Singapore

**Chart 4043** [previous update 1851/07] WGS84 DATUM

Insert	pile, •	1° 23'.52N., 103° 59'.22E.
--------	---------	----------------------------

**Chart 4044 (plan A Serangoon Harbour)** [previous update 1848/07] WGS84 DATUM

Insert	pile, •	1° 23'.520N., 103° 59'.220E.
--------	---------	------------------------------

**Chart 4044** [previous update 1848/07] WGS84 DATUM

Insert	pile, •	1° 23'.52N., 103° 59'.22E.
--------	---------	----------------------------

**V**  
**REPRINT OF ADMIRALTY NOTICES TO MARINERS**  
**FOR DUAL BADGED CHARTS**

**2259 \* SINGAPORE —Pulau Ubin – Serangoon Harbour – Squance Bank North-eastwards - Wreck. Obstruction.**

Source: Maritime and Port Authority of Singapore

**Chart 4043** [previous update 2016/07] WGS84 DATUM

Insert  *Wk* 1° 24'.02N., 103° 58'.13E.

**Chart 4044** [previous update 2016/07] WGS84 DATUM

Substitute  *Wk* for  *Obstn* 1° 24'.02N., 103° 58'.13E.

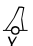
**Chart 4044** (plan A, Serangoon Harbour)[previous update 2016/07] WGS84 DATUM

Substitute  *Wk* for  *Obstn* 1° 24'.016N., 103° 58'.128E.

**2260 \* SINGAPORE —Jurong Island – Banyan Basin Southwards – Buoy.**

Source: Maritime and Port Authority of Singapore

**Chart 4031** [previous update 1850/07] WGS84 DATUM

Insert  *Fl.Y.2s BB7* 1° 14'.722N., 103° 41'.798E.

**Chart 4032** [previous update 798/07] WGS84 DATUM

Insert  *Fl.Y.2s BB7* 1° 14'.722N., 103° 41'.798E.

**2261 \* SINGAPORE —Jurong Island – Jurong Port –Damar Laut Basin – Dredged depth.**

Source: Maritime and Port Authority of Singapore

**Chart 4034** [previous update 2003/07] WGS84 DATUM

Amend dredged depth to, *13.0m(2007)*, centred on: 1° 18'.048N., 103° 43'.570E.

**2262 \* SINGAPORE —Jong Fairway – Pulau Sebarok –Depths.**

Source: Maritime and Port Authority of Singapore

**Chart 4035** [previous update 1853/07] WGS84 DATUM

Substitute depth *10* for depth *8<sub>9</sub>* 1° 12'.172N., 103° 47'.520E.  
 depth *10* for depth *9<sub>2</sub>* 1° 12'.102N., 103° 47'.553E.  
 depth *10* for depth *7<sub>6</sub>* 1° 12'.094N., 103° 47'.622E.

**V**  
**REPRINT OF ADMIRALTY NOTICES TO MARINERS**  
**FOR DUAL BADGED CHARTS**

**Chart 4036** [previous update 1274/07] WGS84 DATUM

Substitute	depth 10 for depth 8 <sub>9</sub>	1° 12'.172N., 103° 47'.520E.
	depth 10 for depth 9 <sub>2</sub>	1° 12'.102N., 103° 47'.553E.
	depth 10 for depth 7 <sub>6</sub>	1° 12'.094N., 103° 47'.622E.


**Chart 4040** [previous update 2003/07] WGS84 DATUM

Substitute	depth 10 for depth 8 <sub>9</sub>	1° 12'.17N., 103° 47'.52E.
	depth 10 for depth 7 <sub>6</sub>	1° 12'.09N., 103° 47'.62E.

**2263 \* SINGAPORE —Singapore Island —Sentosa —T.China South-westwards — Wreck.**

Source: Maritime and Port Authority of Singapore

*Note:* This update will be included in a New Edition of Chart 4037 to be published 24 May 2007.**Chart 4040** [previous update 2262/07] WGS84 DATUM

Substitute	 Wk for  Wk	1° 14'.12N., 103° 49'.64E.
------------	---	----------------------------

**2264 \* SINGAPORE —Singapore Island —Sentosa —Sisters Fairway —Depth.**

Source: Maritime and Port Authority of Singapore

*Note:* This update will be included in a New Edition of Chart 4037 to be published 24 May 2007.**Chart 4040** [previous update 2263/07] WGS84 DATUM

Insert	depth 19 enclosed by 20m contour	1° 12'.79N., 103° 50'.52E.
--------	----------------------------------	----------------------------



**SINGAPORE ELECTRONIC NAVIGATIONAL CHARTS (ENC) DISTRIBUTORS**

Please approach any of the appointed distributors to purchase the Singapore ENC.

<b>CONTACT PERSON/ DESIGNATION</b>	<b>ADDRESS</b>	<b>TELEPHONE/FAX NO./EMAIL/WEBSITE</b>
Mr Chong Chee Meng General Manager	DPM (Singapore) Pte Ltd 1 Maritime Square, #09-72 Harbour Front Centre, Singapore 099253	Tel. No.: +65 6270 4060 Fax No.: +65 6276 3858 Email: <a href="mailto:sales@dpmsingapore.com.sg">sales@dpmsingapore.com.sg</a> Website: <a href="http://www.dpmsingapore.com.sg">http://www.dpmsingapore.com.sg</a>
Mr Hamzah Akhbar MDS Branch Manager	Kelvin Hughes(S) Pte Ltd 8 Pandan Avenue #02-00, Singapore 609384	Tel. No.: +65 6545 9880 ext.24 Fax No.: +65 6545 8892 Email: <a href="mailto:hamzah.akhbar@khsing.com">hamzah.akhbar@khsing.com</a> Website: <a href="http://www.kelvinhughes.co.uk">http://www.kelvinhughes.co.uk</a>
Mr Philip Loh Sales Manager	Motion Smith 76 Shenton Way #01-01, Singapore 079119	Tel. No.: +65 6220 5098 Fax No.: +65 6225 4902 Email: <a href="mailto:sales@motsmith.com">sales@motsmith.com</a> Website: <a href="http://www.motsmith.com">http://www.motsmith.com</a>
Mr Looi Keen Wai Regional Sales Manager	Transas Marine Pacific Pte Ltd 750C Chai Chee Road, Technopark@Chai Chee, #04-07 Singapore 469003	Tel. No.: +65 6443 3061 Fax No.: +65 6443 3025 Email: <a href="mailto:looi@transas.com.sg">looi@transas.com.sg</a> Website: <a href="http://www.transas.com.sg">http://www.transas.com.sg</a>
Mr Choy Kum Weng Director	Vector Services Pte Ltd 15 West Coast Highway, #02-14A Pasir Panjang Building Singapore 117861	Tel. No.: +65 6777 3602 Fax No.: +65 6777 9203 Email: <a href="mailto:kwchoy@pacific.net.sg">kwchoy@pacific.net.sg</a>
Mr George Arts President	Marine Press of Canada 640 Rue St-Paul Ouest, Suite 300 Montreal (QC) Canada, H3C1L9	Tel. No.: (514) 866-8342 Fax No.: (514) 866-9050 Email : <a href="mailto:sales@marinepress.com">sales@marinepress.com</a> Website: <a href="http://www.marinepress.com">http://www.marinepress.com</a>
Mr Thomas Wilde Superintendent	HanseNautic GmbH Bade & Hornig, Eckardt & Messtorff Herrengaben 31 D-20459 Hamburg, Germany	Tel. No.: +49 40 374 811-32 Fax No.: +49 40 366 400 Email: <a href="mailto:wilde@hansenautic.de">wilde@hansenautic.de</a> Website : <a href="http://www.HanseNautic.com">http://www.HanseNautic.com</a>
Ms Verena Borsos Manager	SevenCs AG + Co. KG Ruhrstrasse 90, D-22761 Hamburg, Germany	Tel. No.: +49 40 853 58 6940 Fax No.: +49 40 853 58 6949 Email: <a href="mailto:sales@chartworld.com">sales@chartworld.com</a> Website : <a href="http://www.sevencs.com">http://www.sevencs.com</a>
Mr Keiji Shimizu ENC Manager	Japan Hydrographic Association ENC Service Division 5-3-3 Tsukiji, Chuo-ku Tokyo 104-0045, Japan	Tel. No.: +81 3 3543 0752 Fax No.: +81 3 3543 0695 Email: <a href="mailto:enc-support@jha.jp">enc-support@jha.jp</a> Website: <a href="http://www.jha.jp.com">http://www.jha.jp.com</a>
Mr Jester-Kim Foreign Business Department Manager	E_MLX Co. Ltd Ssangyong Research No.2 Lab Sinseong-Dong 100 Yusong-Gu, Daejoen 305-804, Korea (ROK)	Tel. No.: +82 42 865 1893 Fax No.: +82 42 865 1884 Email: <a href="mailto:Jester-kim@emlx.co.kr">Jester-kim@emlx.co.kr</a>
Mr C G Kim Managing Director	Korean Ocean Development Co. Ltd 2ND Fl, Dongbang Bldg, 25-4, 4 Ga Jungang-Dong, Jung-Gu, Busan, South Korea	Tel. No.: +82 514 66 0760 Fax No.: +82 514 65 9345 Email: <a href="mailto:sales@chartkorea.com">sales@chartkorea.com</a> Website: <a href="http://www.chartkorea.com">http://www.chartkorea.com</a>

**SINGAPORE ELECTRONIC NAVIGATIONAL CHARTS (ENC) DISTRIBUTORS**  
Please approach any of the appointed distributors to purchase the Singapore ENC.

<b>CONTACT PERSON/ DESIGNATION</b>	<b>ADDRESS</b>	<b>TELEPHONE/FAX NO./EMAIL/WEBSITE</b>
Mr Kjell Nodland	C-Map Norway A/S P.O Box 212 , N-4371 Egersund, Norway	Tel No.: +47 514 64 700 Fax No.: +47 514 64 701 Email: <a href="mailto:market@c-map.no">market@c-map.no</a> Website : <a href="http://www.c-map.no">http://www.c-map.no</a>
Mr Roar Moe International Marketing Coordinator	Maritime Information System AS (MARIS) Danholmen 25, No.3115 Tonsberg, Norway	Tel. No.: +47 33 30 42 50 Fax No.: +47 33 30 42 51 Email: <a href="mailto:roar.moe@maris.no">roar.moe@maris.no</a> Website: <a href="http://www.maris.no">http://www.maris.no</a>
Ms Eva Hegland Sales, order and distributor support.	PRIMAR STAVANGER Lervigsveien 36, P.O Box 60, N-4001 Stavanger, Norway	Tel. No.: +47 51 93 9500 Fax No.: +47 51 93 9501 Email: <a href="mailto:sales@primar.org">sales@primar.org</a> Website : <a href="http://www.primar-stavanger.org">http://www.primar-stavanger.org</a>
Mr Andy Criddle Regional Sales Manager	United Kingdom Hydrographic Office Admiralty Way, Taunton, Somerset TA1 2DN United Kingdom	Tel. No.: +44 (0)1823 337900 Fax No.: +44 (0)1823 284077 Emails: <a href="mailto:vargroup@ukho.gov.uk">vargroup@ukho.gov.uk</a> & <a href="mailto:andrew.criddle@ukho.gov.uk">andrew.criddle@ukho.gov.uk</a> Website: <a href="http://www.ukho.gov.uk">http://www.ukho.gov.uk</a>

**CHART AGENTS FOR MARITIME AND PORT AUTHORITY OF SINGAPORE (MPA) PUBLICATIONS**

**Agent's name** : MOTION SMITH  
**Address** : 76 Shenton Way # 01-01  
Singapore 079119  
**Telephone** : (65) 6220 5098  
: (After Office hours: Pager No. 9304 4156, 9304 4159)  
**Fax No.** : (65) 6225 4902  
**E-mail** : [sales@motsmith.com](mailto:sales@motsmith.com)  
**Website** : <http://www.motsmith.com>

**Agent's name** : HONG YUNN SEA PROFESSIONAL CO., LTD  
**Address** : 198 Ta Tong 1<sup>st</sup> Road, Kaohsiung 800,  
Taiwan  
**Telephone** : 886-7-2217367  
**Fax No.** : 886-7-2818180  
**E-mail** : [kimchang@hongyunn.com.tw](mailto:kimchang@hongyunn.com.tw)  
**Website** : <http://www.hongyunn.com.tw>

## HYDROGRAPHIC NOTE - Instructions

1. Mariners are requested to notify the Chief Hydrographer, Maritime and Port Authority of Singapore, when new or suspected dangers to navigation are discovered, changes are observed in aids to navigation or where corrections to nautical publications may be necessary. Reports, which cannot be confirmed or are lacking in certain details should not be withheld.
2. Any ambiguities of time, positioning and depth should be stressed and any firm expectation of being able to check the information provided on a following voyage should be mentioned.
3. Mariners using satellite position fixing systems, eg. GPS, should provide details of equipment and datum used (where applicable). Where bearings (true or magnetic) are taken visually or by radar to fix a position, it should include more than two objects in order to provide a check on its accuracy. A position may also be defined by bearing and distance from a conspicuous object eg. beacon, lighthouse etc.
4. The note should include a tracing or a digital image of the chart used and the details should be clearly marked.
5. Echo sounders frequently register greater depths than the advertised maximum depth for the equipment, eg. a trace appearing at 50 metres may be in fact be 550 metres or even 1050 metres for equipment whose maximum depth is 500 metres. Erroneous depths caused by 2nd transmission error can usually be recognised by the following:
  - (a) the tracing being weaker than normal for the depth registered,
  - (b) the trace appearing to pass through the transmission line,
  - (c) the feathery nature of the trace.
6. An acknowledgement of receipt will be sent. When a Notice to Mariners is issued, the sender's vessel or name is quoted as the source unless the same information is also received in foreign Notices to Mariners.
7. Reports of shoals, uncharted dangers and defects in aids to navigation may also be made to the appropriate Singapore Port Operations Control Station on VHF Channels 10, 12, 14, 68 or 73.

# HYDROGRAPHIC NOTE

To:

Chief Hydrographer  
Hydrographic Department  
Maritime and Port Authority of Singapore  
460 Alexandra Road PSA Building #20-00  
Singapore 119963

Tel : (65) 6375 1227  
Fax : (65) 6278 7646  
Email : [hydrographic@mpa.gov.sg](mailto:hydrographic@mpa.gov.sg)

**Sender's Contact Details** :

Date : .....

Name of Vessel : .....

Address of Sender : .....

Tel : ..... Fax : .....

Email : .....

**Nature of Observation** :

General Location : .....

Subject : .....

Position : Lat. .... Long. ....

Charts Used : .....

Date & Time of Observation : .....

Details : .....

.....

.....

Attachment : .....

**Equipment Used** :

Type of Position Fixing : ..... GPS / DGPS ..... Others : .....

Type of Echo Sounder : .....

Name and Signature : .....

Ship's/Company's stamp : .....