



SINGAPOREAN NOTICES TO MARINERS

SECTION	CONTENT	Page
I	Index of Charts & Publications	123
II	New Publications	126
	Notices to Mariners and Chart Corrections	131
	Temporary and Preliminary Notices	132
III	Navigational Information	133
	Amendments to Publications	134
IV	Reprint of Radio Navigational Warnings	135
V	Reprint of Admiralty Notices to Mariners for Dual Badged Charts	136

The monthly Notices to Mariners contain corrective information affecting charts published by the Hydrographic Department, Maritime and Port Authority of Singapore. The information contained in these Notices should be updated on the charts affected. Notices under Section II apply only to the particular Singaporean Chart(s) indicated.

Mariners are requested to notify the Chief Hydrographer, Maritime and Port Authority of Singapore, immediately on the discovery of new dangers or suspected dangers to navigation and of changes or defects in aids to navigation. See Hydrographic Note on back page.

The monthly Singaporean Notices to Mariners can be accessed directly from the MPA website:

<http://www.mpa.gov.sg/> > Circulars & Notices > Singaporean NTM

or

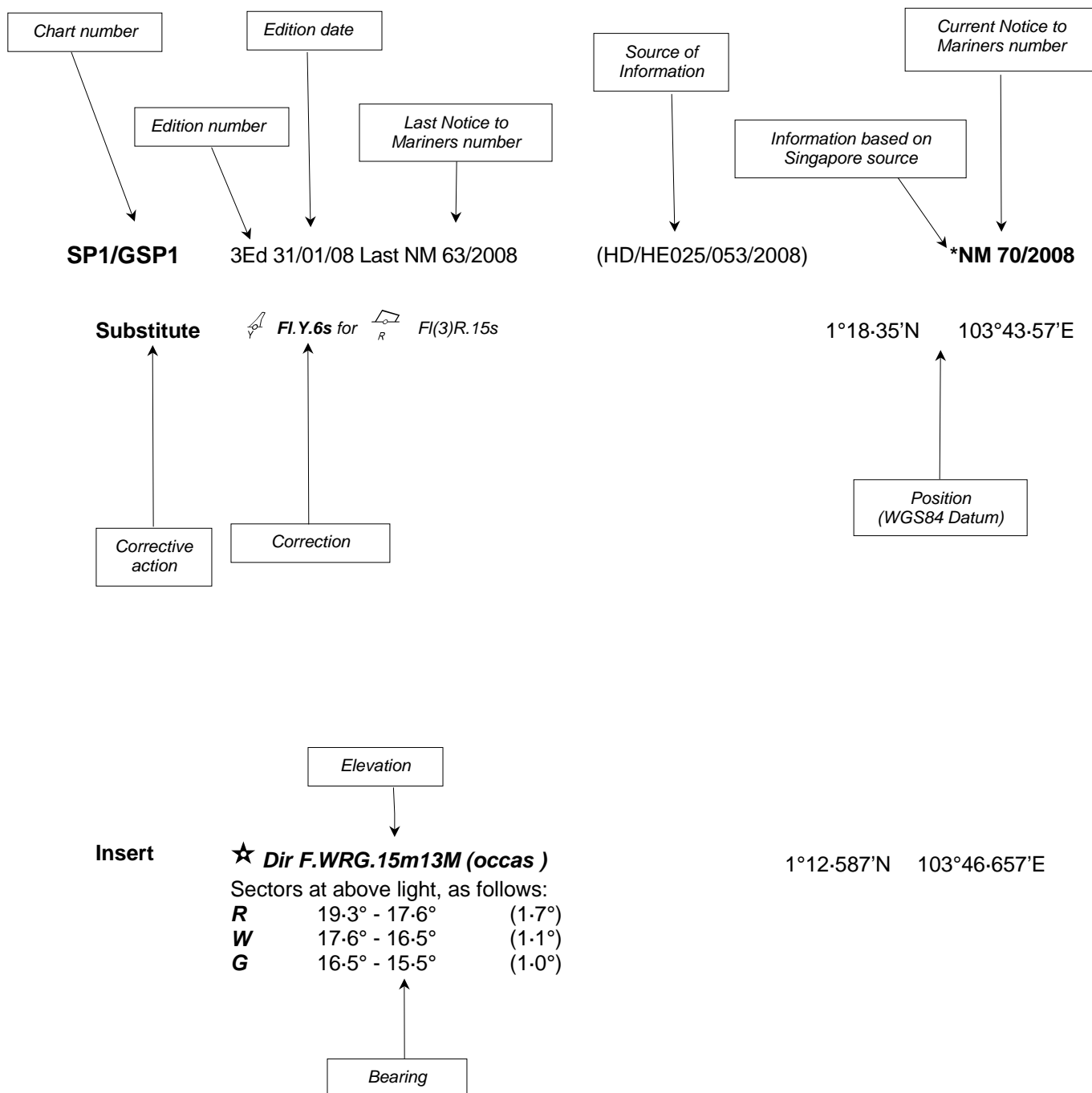
<http://www.mpa.gov.sg/infocentre/publications/noticesmari.htm>

This service is offered free of charge.

Hydrographic Department
Maritime and Port Authority of Singapore
460 Alexandra Road
PSA Building #20-00
Singapore 119963
Tel: (65) 6375 1227
Fax: (65) 6278 7646

EXPLANATION OF FORMAT

The elements of a typical chart correction are explained below.



Notes:

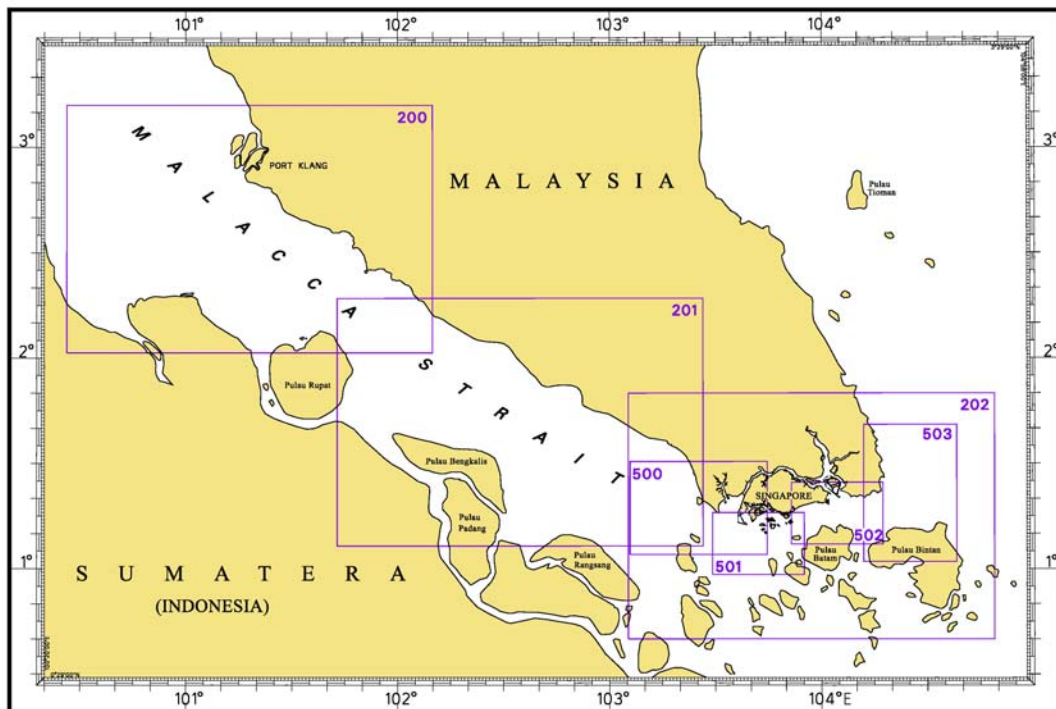
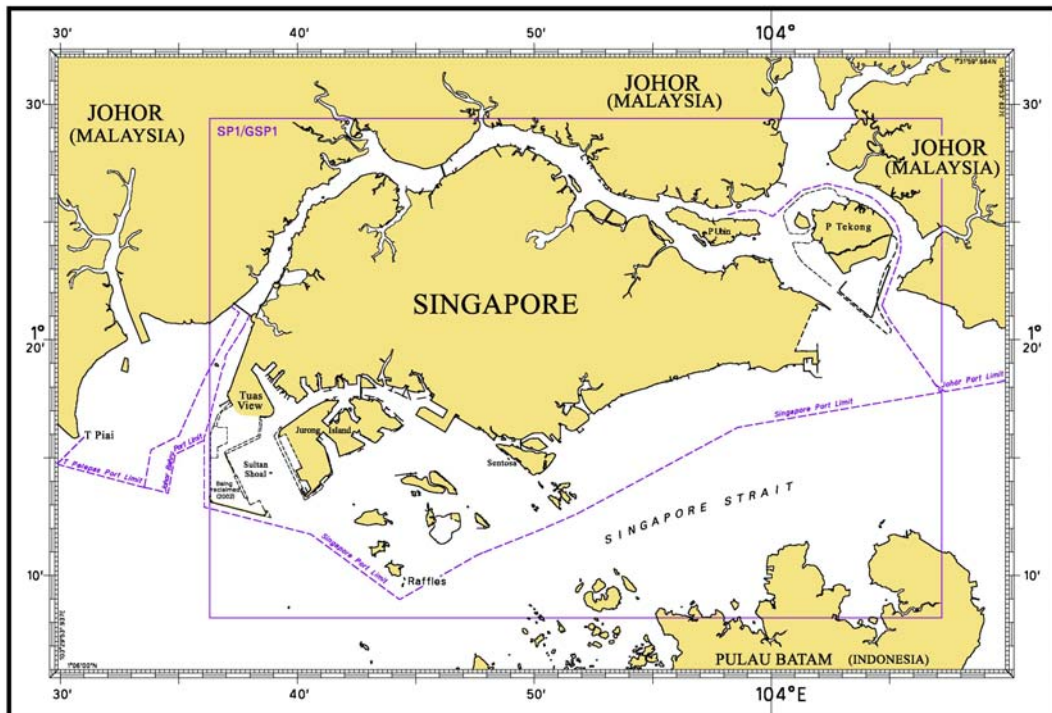
- a) Notice to Mariners number followed by:
 - T** indicates a Temporary Notice (eg. *NM 80T/2008).
 - P** indicates a Preliminary Notice (eg. *NM 80P/2008).
- b) Bearings are referred to True Compass in degrees clockwise from 000° to 359°. Bearings related to lights are from seaward.
- c) Heights and elevations are above Mean High Water Springs.

I
INDEX OF CHARTS AND PUBLICATIONS

DESCRIPTIONS	NOTICES	PAGE
Index of Singaporean Charts	-	124
Index of Dual Badged Charts	-	125
New Edition Dual Badged Charts	-	126
Singaporean Chart 201	84	131
Port Marine Notices	*85	133
Singaporean Print on Demand (POD) Charts	*86	133
Updating of Publication "SINGAPORE PORT INFORMATION 2008/2009 EDITION"	*87	134
Singapore Electronic Navigational Charts (ENC) Distributors	-	141

I INDEX OF CHARTS AND PUBLICATIONS

INDEX OF SINGAPOREAN CHARTS



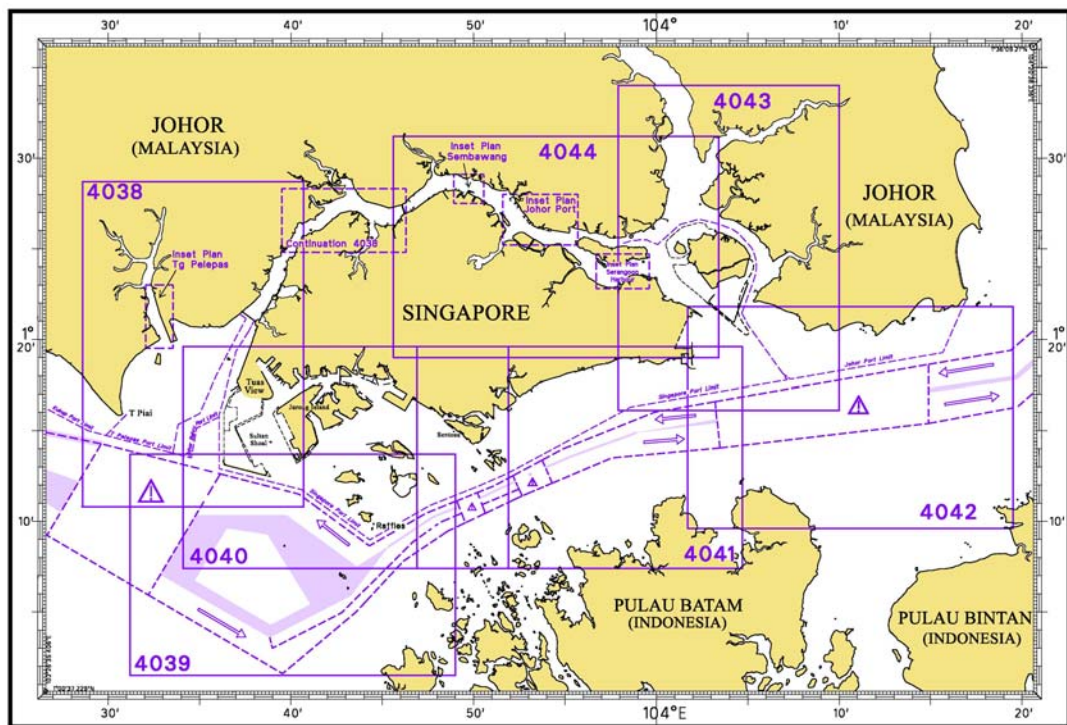
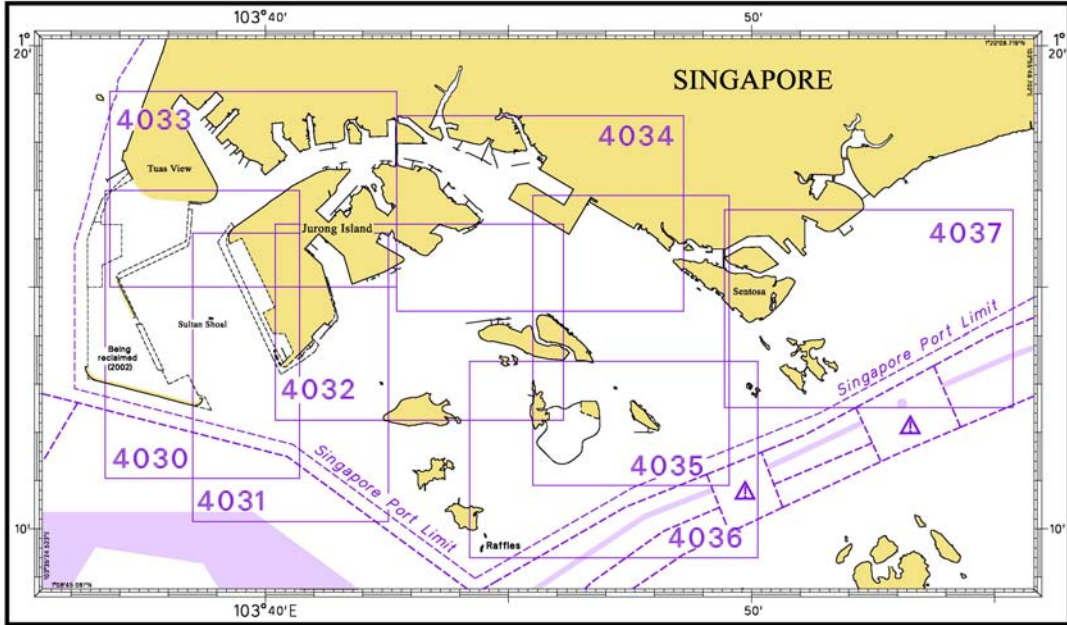
Notes:

Updated SINGAPOREAN Charts (excluding Charts SP1/GSP1 and 503) are available through our Print On Demand (POD)(Chart Service). For more information, refer to Section III – Navigational Information and these charts can be purchased from our authorised Chart Agents:

DPM (Singapore) Pte Ltd, E.W. Liner Charts & Publications Pte Ltd and Motion Smith.

I INDEX OF CHARTS AND PUBLICATIONS

INDEX OF DUAL BADGED CHARTS



II NEW PUBLICATIONS

NEW EDITION DUAL BADGED CHARTS PUBLISHED ON 22 MAY 2008

- 1 The following new edition charts are jointly produced by MPA, Hydrographic Department and the United Kingdom Hydrographic Office :

Chart Number : **4030**
Title : Port of Singapore – West Jurong Anchorages and Temasek Fairway
Scale : 1 : 10 000
Date Published : 22 May 2008
Size of chart : 742.0 x 1096.5 mm
Remarks : This new edition includes updated survey data covering :-

- West Jurong Channel
- Tuas Anchorages
- Temasek Fairway

The existing chart of the same number published on 10 August 2006 is superseded.

Chart Number : **4031**
Title : Port of Singapore – Western Approaches to Jurong Island
Coverage : Lat 1° 10.15' N 1° 16.12' N
 Long 103° 38.50' E 103° 42.53' E
Scale : 1 : 10 000
Date Published : 22 May 2008
Size of chart : 747.5 x 1100.2 mm
Remarks : This new edition includes updated survey data covering :-

- Temasek Fairway
- Tuas Anchorages
- Universal Terminals
- Helios Terminals
- Raffles Shoal

The existing chart of the same number published on 10 August 2006 is superseded.

II NEW PUBLICATIONS

Chart Number : **4032**
Title : Port of Singapore – Sinki Fairway
Coverage : Lat 1° 12.25' N 1° 16.30' N
 Long 103° 40.20' E 103° 46.13' E
Scale : 1 : 10 000
Date Published : 22 May 2008
Size of chart : 1100.0 x 746.4 mm
Remarks : This new edition includes updated survey data covering :-

- Banyan Basin
- Sakra Basin
- East Jurong Channel
- Selat Pandan
- Area around Pulau Busing, Pulau Ular and Pulau Bukom Kechil

The existing chart of the same number published on 10 August 2006 is superseded.

Chart Number : **4033**
Title : Port of Singapore – Tuas Bay, West Jurong Channel and Pesek Basin
Coverage : Lat 1° 15.00' N 1° 19.05' N
 Long 103° 36.80' E 103° 42.70' E
Scale : 1 : 10 000
Date Published : 22 May 2008
Size of chart : 1094.4 x 746.4 mm
Remarks : This new edition includes updated survey data covering :-

- Temasek Fairway
- West Jurong Channel
- Benoi Basin
- Approaches to Northern Tuas Channel

The existing chart of the same number published on 15 June 2006 is superseded.

II NEW PUBLICATIONS

NEW EDITION DUAL BADGED CHARTS TO BE PUBLISHED ON 24 JULY 2008

- 2 The following new edition charts are jointly produced by MPA, Hydrographic Department and the United Kingdom Hydrographic Office :

Chart Number : **4034**
Title : Port of Singapore – East Jurong Channel, Pasir Panjang Terminal and West Keppel Fairway
Coverage : Lat 1° 14.50' N 1° 18.55' N
 Long 103° 42.70' E 103° 48.60' E
Scale : 1 : 10 000
Date Published : 24 July 2008
Size of chart : 1094.3 x 746.3 mm
Remarks : This new edition includes updated survey data covering :-

- East Jurong Channel
- West Keppel Fairway
- Pasir Panjang Fairway
- Selat Sakra

The existing chart of the same number published on 31 January 2008 is superseded.

Chart Number : **4035**
Title : Port of Singapore – Western Anchorages, Jong Fairway and Cruise Bay
Coverage : Lat 1° 10.90' N 1° 16.90' N
 Long 103° 45.50' E 103° 49.54' E
Scale : 1 : 10 000
Date Published : 24 July 2008
Size of chart : 749.4 x 1105.7 mm
Remarks : This new edition includes updated survey data covering :-

- East Jurong Channel
- West Keppel Fairway
- Pasir Panjang Fairway
- Western Anchorages
- Approaches to Shell SBM

The existing chart of the same number published on 31 January 2008 is superseded.

II NEW PUBLICATIONS

Chart Number	:	4040
Title	:	Singapore, Indonesia and Malaysia, Tuas View to Pulau Sakijang Bendera (S. John's Island)
Coverage	:	Lat 1° 07.40' N 1° 19.60' N Long 103° 34.10' E 103° 51.90' E
Scale	:	1 : 30 000
Date Published	:	24 July 2008
Size of chart	:	1100.6 x 749.5 mm
Remarks	:	This new edition includes updated survey data covering :- <ul style="list-style-type: none"> • Tuas Anchorages • West & East Jurong Channel • Temasek Fairway • Raffles Shoal • Western Anchorages • Approaches to Pulau Sebarok • Area around Pulau Busing, Pulau Ular and Pulau Bukom Kechil • East Keppel Fairway • Sister Fairway

The existing chart of the same number published on 21 September 2006 is superseded.

Chart Number	:	4041
Title	:	Singapore and Indonesia, Pulau Sebarok to Changi
Coverage	:	Lat 1° 07.40' N 1° 19.60' N Long 103° 46.90' E 104° 04.70' E
Scale	:	1 : 30 000
Date Published	:	24 July 2008
Size of chart	:	1100.6 x 749.5 mm
Remarks	:	This new edition includes updated survey data covering :- <ul style="list-style-type: none"> • Western Anchorages • Approaches to Pulau Sebarok • East Keppel Fairway • Sister Fairway • Eastern Anchorage • Eastern Fairway • Eastern Bunkering A Anchorage • Eastern Special Purposes D Anchorage


The existing chart of the same number published on 24 May 2007 is superseded.

II NEW PUBLICATIONS

Chart Number	:	4042
Title	:	Indonesia, Malaysia and Singapore Changi To Pulau Mungging and Tanjung Buntan To Tanjung Tondang
Coverage	:	Lat 1° 09.55' N 1° 21.75' N Long 104° 01.70' E 104° 19.50' E
Scale	:	1 : 30 000
Date Published	:	24 July 2008
Size of chart	:	1100.6 x 749.5 mm
Remarks	:	This new edition includes updated survey data covering :- <ul style="list-style-type: none">• Eastern Bunkering Anchorage• Changi General Purposes and Man-of-War Anchorages• Cable Corridor Area• Area South of Pulau Tekong

The existing chart of the same number published on 20 May 2004 is superseded.

II
NOTICES TO MARINERS AND CHART CORRECTIONS

201	3Ed 5/10/07 Last NM 76/2008	(Indonesian Notices 17/140/2008)	NM 84/2008
Insert	 Fl.Y.2s5M		1°42.35'N 101°44.50'E

II
TEMPORARY AND PRELIMINARY NOTICES

Nil

III NAVIGATIONAL INFORMATION

*(NM 85/2008) PORT MARINE NOTICES

The following PMNs have been shortlisted, as they would be of particular interest to mariners.

These notices can be accessed directly from MPA website:

http://www.mpa.gov.sg/circulars_and_notices/portmarine_notices/pm_notices.htm

PMN No.	Subject
89/2008	Resorts World at Sentosa – Construction of a New Bridge from Singapore Island to Sentosa.
90/2008	Proposed Resorts World at Sentosa : The new Bridge : Widening of the existing Causeway and Causeway extension works.
92/2008	Reclamation at Pulau Tekong.
95/2008	Installation of new fish farm off Pulau Semakau.
104/2008	Reclamation at Pasir Panjang Terminal and Pasir Panjang Wharves.
106/2008	Sand Mining at Area 1 and Dumping at (i) Jurong Island LNG Project and (ii) Pasir Panjang Terminal Project working areas.

*(NM 86/2008) SINGAPOREAN PRINT ON DEMAND (POD) CHARTS

Print On Demand (POD) Charts are the most up-to-date paper nautical charts printed for navigational use. These nautical charts are produced in accordance with the International Hydrographic Organisation (IHO) charting specifications. These official nautical charts are continually updated to the latest Notices to Mariners before they are printed and sold to users.

These POD Charts include 200, 201, 202, 500, 501, 502.

BENEFITS TO OUR CUSTOMERS

Convenience

Customers need not make numerous hand corrections to the nautical charts before use. In addition the updated POD Charts are more accurate and reliable than offset printed charts with hand corrections.

Clarity

Clarity in the presentation of updated information as compared to lithographic printed charts, where in some cases there are several overlapping corrections over existing information.

Coverage

The POD Charts cover the Malacca and Singapore Straits, from One Fathom Bank to Horsburgh Lighthouse.

III
AMENDMENTS TO PUBLICATIONS

***(NM 87/2008) UPDATING OF PUBLICATION “SINGAPORE PORT INFORMATION 2008/2009 EDITION”**

1 Page 154 – Item 46

**JURONG ISLAND – BANYAN BASIN
(EXXON CHEMICAL SINGAPORE PTE LTD) (1°15.9’N, 103°41.2’E)**

Insert the following:

Berth	Length of Berth	Width of Berth	Depth Alongside (Year Surveyed)	Controlling Depth In Approaches
OBE1	155m	22m	11.6m (2007)	16.5m

Source: HD/HY Codes E00102807

IV
REPRINT OF RADIO NAVIGATIONAL WARNINGS

Nil

V
**REPRINT OF ADMIRALTY NOTICES TO MARINERS
 FOR DUAL BADGED CHARTS**

These notices can be accessed directly from UKHO Website:

<http://www.ukho.gov.uk/amd/weeklyNms.asp>

2279* SINGAPORE – East Jurong Channel – Dredged depths.

Source: Maritime and Port Authority of Singapore

Chart 4034 [*previous update 1615/08*] WGS84 DATUM

Amend	Dredged depth to, <i>10.5m (2007)</i> centred on:	1° 17'·051N., 103° 43'·797E.
	Dredged depth to, <i>13.6m (2007)</i> centred on:	1° 17'·685N., 103° 44'·269E.
	Dredged depth to, <i>11.0m (2007)</i> centred on:	1° 17'·521N., 103° 44'·629E.

2280* SINGAPORE – Sisters Fairway – Pulau Sakijang Bendera Westwards – Buoy.

Source: Maritime and Port Authority of Singapore


Chart 4037 [*previous update 1031/08*] WGS84 DATUM

Insert	 <i>Fl(2)Y.8s TSS6</i>	1° 13'·143N., 103° 50'·722E.
--------	---	------------------------------

Chart 4040 [*previous update 1847/08*] WGS84 DATUM

Insert	 <i>Fl(2)Y.8s TSS6</i>	1° 13'·14N., 103° 50'·72E.
--------	--	----------------------------

Chart 4041 [*previous update 1847/08*] WGS84 DATUM

Insert	 <i>Fl(2)Y.8s TSS6</i>	1° 13'·14N., 103° 50'·72E.
--------	---	----------------------------

2281* SINGAPORE – Pulau Bukom North-eastwards and Pasir Panjang Fairway – Depths. Buoys.

Source: Maritime and Port Authority of Singapore

Chart 4034 [*previous update 2279/08*] WGS84 DATUM

Insert	depth <i>14₇</i>	(a) 1° 16'·605N., 103° 46'·654E.
--------	-----------------------------	----------------------------------

Substitute	depth <i>14₅</i> for depth <i>14₇</i>	1° 16'·215N., 103° 46'·662E.
------------	---	------------------------------

Delete	depth <i>15</i> , close NW of:	(a) above
--------	--------------------------------	-----------

Chart 4035 [*previous update 1615/08*] WGS84 DATUM

Insert	depth <i>14₇</i>	(a) 1° 16'·605N., 103° 46'·654E.
--------	-----------------------------	----------------------------------

	depth <i>16₇</i>	(b) 1° 14'·308N., 103° 46'·490E.
--	-----------------------------	----------------------------------

	 <i>Fl.Y.4s ADCP3</i>	1° 14'·319N., 103° 46'·280E.
--	--	------------------------------

Substitute	depth <i>14₅</i> for depth <i>14₇</i>	1° 16'·215N., 103° 46'·662E.
------------	---	------------------------------

Delete	depth <i>15</i> , close NW of:	(a) above
--------	--------------------------------	-----------

	depth <i>17₁</i> , close NW of:	(b) above
--	--	-----------

V
**REPRINT OF ADMIRALTY NOTICES TO MARINERS
 FOR DUAL BADGED CHARTS**

Chart 4040 [*previous update 2280/08*] WGS84 DATUM

Insert	depth <i>16</i> ₇	1° 14'·31N., 103° 46'·49E.
	 <i>Fl.Y.4s ADCP3</i>	1° 14'·32N., 103° 46'·28E.

2282* SINGAPORE – Jurong Island – Helios Terminal – Berths.

Source: Maritime and Port Authority of Singapore

Chart 4030 [*previous update 1182/08*] WGS84 DATUM

Insert	berth number, 1	1° 13'·681N., 103° 40'·394E.
	berth number, 2	1° 13'·628N., 103° 40'·420E.
	berth number, 4	(a) 1° 13'·678N., 103° 40'·336E.
	berth number, 5	1° 13'·630N., 103° 40'·360E.
	berth number, 6	1° 13'·580N., 103° 40'·383E.
Delete	former berth number, 1, close NW of:	(a) above
	former berth number, 2	1° 13'·730N., 103° 40'·373E.

Chart 4031 [*previous update 1613/08*] WGS84 DATUM

Insert	berth number, 1	1° 13'·681N., 103° 40'·394E.
	berth number, 2	1° 13'·628N., 103° 40'·420E.
	berth number, 4	(a) 1° 13'·678N., 103° 40'·336E.
	berth number, 5	1° 13'·630N., 103° 40'·360E.
	berth number, 6	1° 13'·580N., 103° 40'·383E.
Delete	former berth number, 1, close NW of:	(a) above
	former berth number, 2	1° 13'·730N., 103° 40'·373E.

2283* SINGAPORE – Pulau Busing Westwards to Pulau Bukom Southwards – Buoyage.

Source: Maritime and Port Authority of Singapore

Chart 4032 [*previous update 1613/08*] WGS84 DATUM


Insert	 <i>Fl.Y.6s ECC2</i>	1° 13'·509N., 103° 45'·675E.
	 <i>Fl.Y.8s ECC3</i>	1° 13'·668N., 103° 45'·276E.
	 <i>Fl.Y.4s ECC4</i>	1° 13'·460N., 103° 45'·319E.
	 <i>Fl.R.2s UF1</i>	1° 13'·980N., 103° 44'·130E.
	 <i>Fl.G.4s UF2</i>	1° 13'·900N., 103° 44'·110E.
	 <i>Fl.G.8s UF3</i>	1° 13'·820N., 103° 44'·370E.
	 <i>Fl.R.4s UF4</i>	1° 13'·846N., 103° 44'·562E.
	 <i>Fl.G.6s UF5</i>	1° 13'·733N., 103° 44'·788E.

Chart 4035 [*previous update 2281/08*] WGS84 DATUM

Insert	 <i>Fl(2)Y.4s ECC1</i>	1° 13'·150N., 103° 46'·726E.
	 <i>Fl.Y.6s ECC2</i>	1° 13'·509N., 103° 45'·675E.

V
REPRINT OF ADMIRALTY NOTICES TO MARINERS
FOR DUAL BADGED CHARTS

Chart 4036 [previous update 850/08] WGS84 DATUM

Insert	 Fl(2)Y.4s ECC1	1° 13'·150N., 103° 46'·726E.
	 Fl.Y.4s ECC4	1° 13'·460N., 103° 45'·319E.

Chart 4039 [previous update 1513/08] WGS84 DATUM











Insert	 Fl(2)Y.4s ECC1	1° 13'·15N., 103° 46'·73E.
	 Fl.Y.6s ECC2	1° 13'·51N., 103° 45'·68E.
	 Fl.Y.8s ECC3	1° 13'·67N., 103° 45'·28E.
	 Fl.Y.4s ECC4	1° 13'·46N., 103° 45'·32E.

Chart 4040 [previous update 2281/08] WGS84 DATUM

Insert	 Fl(2)Y.4s ECC1	1° 13'·15N., 103° 46'·73E.
	 Fl.Y.6s ECC2	1° 13'·51N., 103° 45'·68E.
	 Fl.Y.8s ECC3	1° 13'·67N., 103° 45'·28E.
	 Fl.Y.4s ECC4	1° 13'·46N., 103° 45'·32E.
	 Fl.R.2s UF1	1° 13'·98N., 103° 44'·13E.
	 Fl.G.4s UF2	1° 13'·90N., 103° 44'·11E.
	 Fl.G.8s UF3	1° 13'·82N., 103° 44'·37E.
	 Fl.R.4s UF4	1° 13'·85N., 103° 44'·56E.
	 Fl.G.6s UF5	1° 13'·73N., 103° 44'·79E.

2284* SINGAPORE – Johor Strait – Eastern Part – Dockyard Reach and Serangoon Harbour – Depths. Wrecks. Foul.

Source: Maritime and Port Authority of Singapore

Chart 4044 (plan C, Sembawang) [previous update 1614/08] WGS84 DATUM

Insert	depth 9_2	(a) 1° 28'·125N., 103° 49'·467E.
Delete	depth 9_9 , close NE of:	(a) above

Chart 4044 [previous update 1614/08] WGS84 DATUM

Insert	 Wk	(a) 1° 28'·30N., 103° 48'·72E.
	 Foul	1° 24'·20N., 103° 56'·67E.
Delete	 Wk, close W of:	(a) above

V
REPRINT OF ADMIRALTY NOTICES TO MARINERS
FOR DUAL BADGED CHARTS

2285* SINGAPORE – East Jurong Channel – Terumbu Pandan North-eastwards – Buoy.

Source: Maritime and Port Authority of Singapore

Chart 4032 [*previous update 2283/08*] WGS84 DATUM

Insert  *Fl.Y.10s TSS5* 1° 15'·632N., 103° 45'·408E.

Chart 4034 [*previous update 2281/08*] WGS84 DATUM

Insert  *Fl.Y.10s TSS5* 1° 15'·632N., 103° 45'·408E.

Chart 4040 [*previous update 2283/08*] WGS84 DATUM

Insert  *Fl.Y.10s TSS5* 1° 15'·63N., 103° 45'·41E.

2286* SINGAPORE – East Traffic Separation Scheme – Cautionary note.

Source: Singaporean Notice 4/67P/08

Chart 4037 [*previous update 2280/08*] WGS84 DATUM

Substitute the accompanying note, DREDGING AREA, for the existing note, centred on: 1° 16'·150N., 103° 50'·820E.


Chart 4041 [*previous update 2280/08*] WGS84 DATUM


Substitute the accompanying note, DREDGING AREA, for the existing note, centred on: 1° 18'·95N., 103° 56'·12E.


2596* INDONESIA – Sumatera – Pulau Batam – Batuampar – Buoyage.

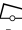
Source: Indonesia Chart 44


Chart 4041 [*previous update 2286/08*] WGS84 DATUM


Insert  *LFl.10s* 1° 10'·19N., 103° 58'·62E.


 *Fl.R.3s No.2* (a) 1° 10'·07N., 103° 59'·43E.



 *Fl.R No.4* 1° 10'·06N., 103° 59'·73E.



 1° 09'·52N., 103° 59'·14E.


 1° 09'·35N., 103° 59'·47E.


 1° 09'·41N., 103° 59'·11E.

 1° 09'·25N., 103° 59'·45E.

Substitute  *Fl.G.3s No.1* for  *Fl.G.3s* 1° 09'·95N., 103° 59'·32E.

 *Fl.G.4s No.3* for  *Fl.G.3s* 1° 09'·92N., 103° 59'·67E.

Delete  *Fl.R.3s*, close E of: (a) above

 *Fl.R.3s* 1° 10'·32N., 103° 59'·54E.

V
REPRINT OF ADMIRALTY NOTICES TO MARINERS
FOR DUAL BADGED CHARTS

To accompany Notice to Mariners 2286/08

On Chart 4037

DREDGING AREA

Dredging operations will be carried out in the westbound lane of the Traffic Separation Scheme until December 2011. Navigational warning broadcasts will be made by the Vessel Traffic Service of Singapore (VTIS) to inform vessels of the dredging operation. Mariners are advised to navigate with caution, proceed at a safe speed when approaching the area and keep well clear of the working vessels. For further details see Singaporean Notice to Mariners No. 67P/2008 at [www.mpa.gov.sg/Circulars & Notices](http://www.mpa.gov.sg/Circulars%20&%20Notices) > Singaporean NTM.

To accompany Notice to Mariners 2286/08

On Chart 4041

DREDGING AREA

Dredging operations will be carried out in the westbound lane of the Traffic Separation Scheme until December 2011. Navigational warning broadcasts will be made by the Vessel Traffic Service of Singapore (VTIS) to inform vessels of the dredging operation. Mariners are advised to navigate with caution, proceed at a safe speed when approaching the area and keep well clear of the working vessels. For further details see Singaporean Notice to Mariners No. 67P/2008 at [www.mpa.gov.sg/Circulars & Notices](http://www.mpa.gov.sg/Circulars%20&%20Notices) > Singaporean NTM.

Updated to Admiralty Notices to Mariners Edition No. 22 of 2008 dated 29 May 2008.

SINGAPORE ELECTRONIC NAVIGATIONAL CHARTS (ENC) DISTRIBUTORS
Please approach any of the appointed distributors to purchase the Singapore ENC.

CONTACT PERSON/ DESIGNATION	ADDRESS	TELEPHONE/FAX NO./EMAIL/WEBSITE
Mr Chong Chee Meng General Manager	DPM (Singapore) Pte Ltd 1 Maritime Square, #09-72 Harbour Front Centre, Singapore 099253	Tel. No.: +65 6270 4060 Fax No.: +65 6276 3858 Email: sales@dpmsingapore.com.sg Website: http://www.dpmsingapore.com.sg
Mr Hamzah Akhbar MDS Branch Manager	Kelvin Hughes(S) Pte Ltd 8 Pandan Avenue #02-00, Singapore 609384	Tel. No.: +65 6545 9880 ext.24 Fax No.: +65 6545 8892 Email: hamzah.akhbar@khsing.com Website: http://www.kelvinhughes.co.uk
Mr Looi Keen Wai Regional Sales Manager	Maritime Information Systems (MARIS) 52, Telok Blangah Road #01-06, Telok Blangah Centre, Singapore 058809	Tel. No.: +65 6276 1472 Fax No.: +65 6276 1473 Email: support@maris.sg Website: http://www.maris.no
Ms Kathrine Bjaroy Marketing Coordinator	Maritime Information System AS (MARIS) Danholmen 25, 3128 Notteroy, Norway	Tel. No.: +47 33 30 42 50 Fax No.: +47 33 30 42 51 Email: roar.moe@maris.no Website: http://www.maris.no
Mr Bernard Wong Sales Manager	Motion Smith 15 Jalan Kilang Barat #08-01/05 Frontech Centre Singapore 159357	Tel. No.: +65 6220 5098 Fax No.: +65 6225 4902 Email: sales@motsmith.com Website: http://www.motsmith.com
Mr Dominic Oliver	Transas Marine Pacific Pte Ltd 750C Chai Chee Road, #04-07, Technopark@Chai Chee, Singapore 469003	Tel. No.: +65 6443 3061 Fax No.: +65 6443 3025 Email: dominic@transas.com.sg Website: http://www.transas.com.sg
Mr Choy Kum Weng Director	Vector Services Pte Ltd 15 West Coast Highway, #02-14A Pasir Panjang Building Singapore 117861	Tel. No.: +65 6777 3602 Fax No.: +65 6777 9203 Email: kwchoy@pacific.net.sg
Mr George Arts President	Marine Press of Canada 640 Rue St-Paul Ouest, Suite 300 Montreal (QC) Canada, H3C1L9	Tel. No.: (514) 866-8342 Fax No.: (514) 866-9050 Email : sales@marinepress.com Website: http://www.marinepress.com
Mr Thomas Wilde Superintendent	HanseNautic GmbH Bade & Hornig, Eckardt & Messtorff Herrengaben 31 D-20459 Hamburg, Germany	Tel. No.: +49 40 374 811-32 Fax No.: +49 40 366 400 Email: wilde@hansenautic.de Website : http://www.HanseNautic.com
Ms Verena Borsos Manager	SevenCs AG + Co. KG Ruhrstrasse 90, D-22761 Hamburg, Germany	Tel. No.: +49 40 853 58 6940 Fax No.: +49 40 853 58 6949 Email: sales@chartworld.com Website : http://www.sevencs.com
Mr Keiji Shimizu General Manager	Japan Hydrographic Association Electronic Charts Division Daiichi Sogo Bldg, 6F 1-6-6, Hanedakuko, Ota-ku Tokyo 144-0041 Japan	Tel. No.: +81 3 5708 7093 Fax No.: +81 3 5708 7094 Email: enc-support@jha.jp Website: http://www.jha.jp
Mr Jester-Kim Foreign Business Department Manager	E_MLX Co. Ltd Ssangyong Research No.2 Lab Sinseong-Dong 100 Yusong-Gu, Daejoen 305-804, Korea (ROK)	Tel. No.: +82 42 865 1893 Fax No.: +82 42 865 1884 Email: Jester-kim@emlx.co.kr

SINGAPORE ELECTRONIC NAVIGATIONAL CHARTS (ENC) DISTRIBUTORS
Please approach any of the appointed distributors to purchase the Singapore ENC.

CONTACT PERSON/ DESIGNATION	ADDRESS	TELEPHONE/FAX NO./EMAIL/WEBSITE
Mr C G Kim Managing Director	Korean Ocean Development Co. Ltd 2ND Fl, Dongbang Bldg, 25-4, 4 Ga Jungang-Dong, Jung-Gu, Busan, South Korea	Tel. No.: +82 514 66 0760 Fax No.: +82 514 65 9345 Email: sales@chartkorea.com Website: http://www.chartkorea.com
Mr Kjell Nodland	Jeppesen Norway A/S P.O Box 212 , N-4379 Egersund, Norway	Tel No.: +47 514 64 700 Fax No: +47 514 64 701 Email: enc@c-map.no Website : http://www.c-map.no
Ms Eva Hegland Sales, order and distributor support.	PRIMAR STAVANGER Lervigsveien 36, P.O Box 60, N-4001 Stavanger, Norway	Tel. No.: +47 51 93 9500 Fax No.: +47 51 93 9501 Email: sales@primar.org Website : http://www.primar-stavanger.org
Mrs Christine Trickett Product Manager	United Kingdom Hydrographic Office Admiralty Way, Taunton, Somerset TA1 2DN United Kingdom	Tel. No.: +44 (0)1823 337900 Fax No.: +44 (0)1823 284077 Emails: vargroup@ukho.gov.uk & christine.trickett@ukho.gov.uk Website: http://www.ukho.gov.uk

Agents for the Maritime and Port Authority of Singapore Publications

Agent's name : **DPM (Singapore) Pte Ltd**
Address : 1 Maritime Square #09-72, HarbourFront Centre,
Singapore 099253
Telephone : (65) 6270 4060
Fax No. : (65) 6276 3858
E-mail : sales@dpmsingapore.com.sg
Internet Web Site : <http://www.dpmsingapore.com.sg>

Agent's name : **E.W. Liner Charts & Publications Pte Ltd**
Address : 102F, Pasir Panjang Road, #08-01, Citilink Warehouse Complex,
Singapore 118530
Telephone : (65) 6323 0773
Fax No. : (65) 6323 0775
E-mail : ewliner@singnet.com.sg
Internet Web Site : <http://www.ewliner.com>

Agent's name : **Motion Smith**
Address : 15 Jalan Kilang Barat
#08-01/05 Frontech Centre,
Singapore 159357
Telephone : (65) 6220 5098
: (After office hours: 8163 9993)
Fax No. : (65) 6225 4902
E-mail : sales@motsmith.com
Internet Web Site : <http://www.motsmith.com>

HYDROGRAPHIC NOTE - Instructions

1. Mariners are requested to notify the Chief Hydrographer, Maritime and Port Authority of Singapore, when new or suspected dangers to navigation are discovered, changes are observed in aids to navigation or where corrections to nautical publications may be necessary. Reports, which cannot be confirmed or are lacking in certain details should not be withheld.
2. Any ambiguities of time, positioning and depth should be stressed and any firm expectation of being able to check the information provided on a following voyage should be mentioned.
3. Mariners using satellite position fixing systems, eg. GPS, should provide details of equipment and datum used (where applicable). Where bearings (true or magnetic) are taken visually or by radar to fix a position, it should include more than two objects in order to provide a check on its accuracy. A position may also be defined by bearing and distance from a conspicuous object eg. beacon, lighthouse etc.
4. The note should include a tracing or a digital image of the chart used and the details should be clearly marked.
5. Echo sounders frequently register greater depths than the advertised maximum depth for the equipment, eg. a trace appearing at 50 metres may be in fact be 550 metres or even 1050 metres for equipment whose maximum depth is 500 metres. Erroneous depths caused by 2nd transmission error can usually be recognised by the following:
 - (a) the tracing being weaker than normal for the depth registered,
 - (b) the trace appearing to pass through the transmission line,
 - (c) the feathery nature of the trace.
6. An acknowledgement of receipt will be sent. When a Notice to Mariners is issued, the sender's vessel or name is quoted as the source unless the same information is also received in foreign Notices to Mariners.
7. Reports of shoals, uncharted dangers and defects in aids to navigation may also be made to the appropriate Singapore Port Operations Control Station on VHF Channels 10, 12, 14, 68 or 73.

HYDROGRAPHIC NOTE

To:

Chief Hydrographer
Hydrographic Department
Maritime and Port Authority of Singapore
460 Alexandra Road PSA Building #20-00
Singapore 119963

Tel : (65) 6375 1227
Fax : (65) 6278 7646
Email : hydrographic@mpa.gov.sg

Sender's Contact Details :

Date :

Name of Vessel :

Address of Sender :

Tel : Fax :

Email :

Nature of Observation :

General Location :

Subject :

Position : Lat. Long.

Charts Used :

Date & Time of Observation :

Details :

.....

.....

Attachment :

Equipment Used :

Type of Position Fixing : GPS / DGPS Others :

Type of Echo Sounder :

Name and Signature :

Ship's/Company's stamp :