



## SINGAPOREAN NOTICES TO MARINERS

---

SECTION	CONTENT	Page
I	Index of Charts & Publications	99
II	New Publications	104
	Notices to Mariners and Chart Corrections	107
	Temporary and Preliminary Notices	109
III	Navigational Information	111
	Amendments to Publications	113
IV	Reprint of Radio Navigational Warnings	114
V	Reprint of Admiralty Notices to Mariners for Dual Badged Charts	116

---

The monthly Notices to Mariners contain corrective information affecting charts published by the Hydrographic Department, Maritime and Port Authority of Singapore. The information contained in these Notices should be updated on the charts affected. Notices under Section II apply only to the particular Singaporean Chart(s) indicated.

Mariners are requested to notify the Chief Hydrographer, Maritime and Port Authority of Singapore, immediately on the discovery of new dangers or suspected dangers to navigation and of changes or defects in aids to navigation. See Hydrographic Note on back page.

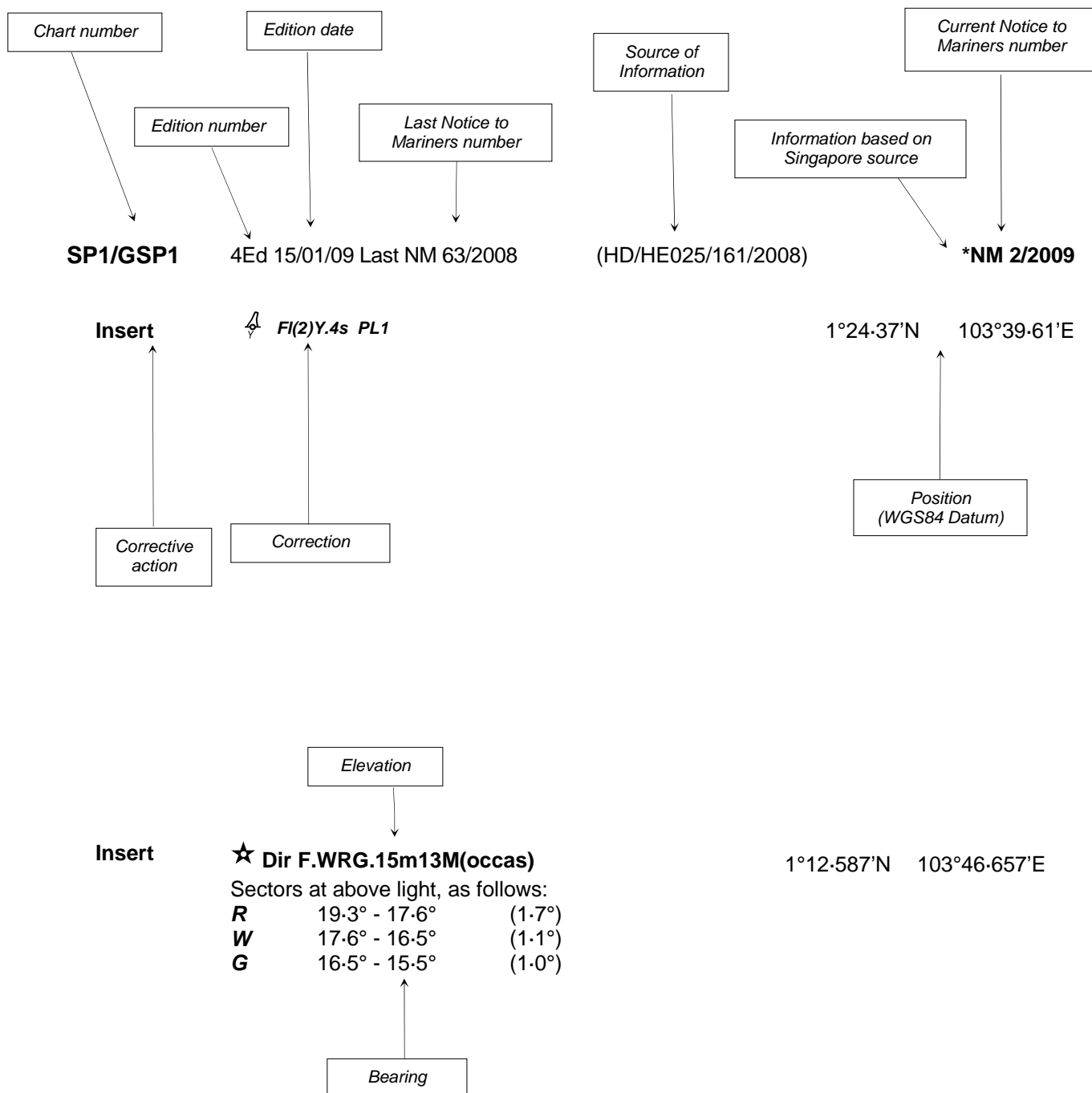
The monthly Singaporean Notices to Mariners can be accessed directly from the MPA website:  
[http://www.mpa.gov.sg/sites/port\\_and\\_shipping/circulars\\_and\\_notices/singapore\\_notices\\_to\\_mariners\(ntm\).page](http://www.mpa.gov.sg/sites/port_and_shipping/circulars_and_notices/singapore_notices_to_mariners(ntm).page)

This service is offered free of charge.

Hydrographic Department  
 Maritime and Port Authority of Singapore  
 460 Alexandra Road  
 PSA Building #20-00  
 Singapore 119963  
 Tel: (65) 6375 1227  
 Fax: (65) 6278 7646

## EXPLANATION OF FORMAT

The elements of a typical chart correction are explained below.



**Notes:**

- a) Notice to Mariners number followed by:
  - T** indicates a Temporary Notice (eg. \*NM 1T/2009).
  - P** indicates a Preliminary Notice (eg. \*NM 1P/2009).
- b) Bearings are referred to True Compass in degrees clockwise from 000° to 359°. Bearings related to lights are from seaward.
- c) Heights and elevations are above Mean High Water Springs.

I  
INDEX OF CHARTS AND PUBLICATIONS

DESCRIPTION	NOTICE NO.	PAGE NO.
Index of Singaporean Charts	-	101
Index of Dual Badged Charts	-	102
Index of Singapore Electronic Navigational Charts (ENC)	-	103
New Edition Dual Badged Charts	-	104
Singaporean Chart SP1/GSP1	*50	107
Singaporean Chart 200	51,52	107
Singaporean Chart 202	53	107
Singaporean Chart 502	53, *54	107
Singaporean Chart 503	53, *54	108
Temporary and Preliminary Notices	*55P	109
Port Marine Notices	*56	111
Strait of Singapore – Damage to submarine cables caused by ships anchoring at non-designated anchorage areas.	*57	111
Singaporean Print On Demand (POD) Charts	*58	111
Updating of Publication “SINGAPORE PORT INFORMATION 2008/2009 EDITION”	*59	113
Reprint of Radio Navigational Warnings	-	114
Reprint of Admiralty Notices to Mariners for Dual Badged Charts	-	116
Singapore Electronic Navigational Charts (ENC) Distributors	-	123

\* Denotes information are based on Singapore source.

## I

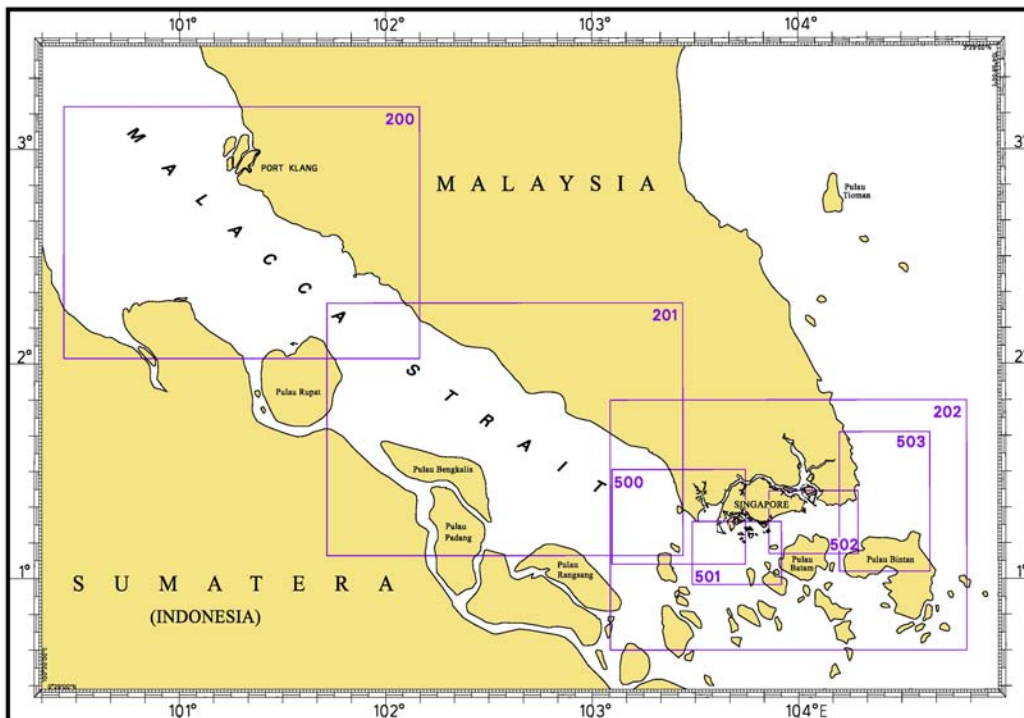
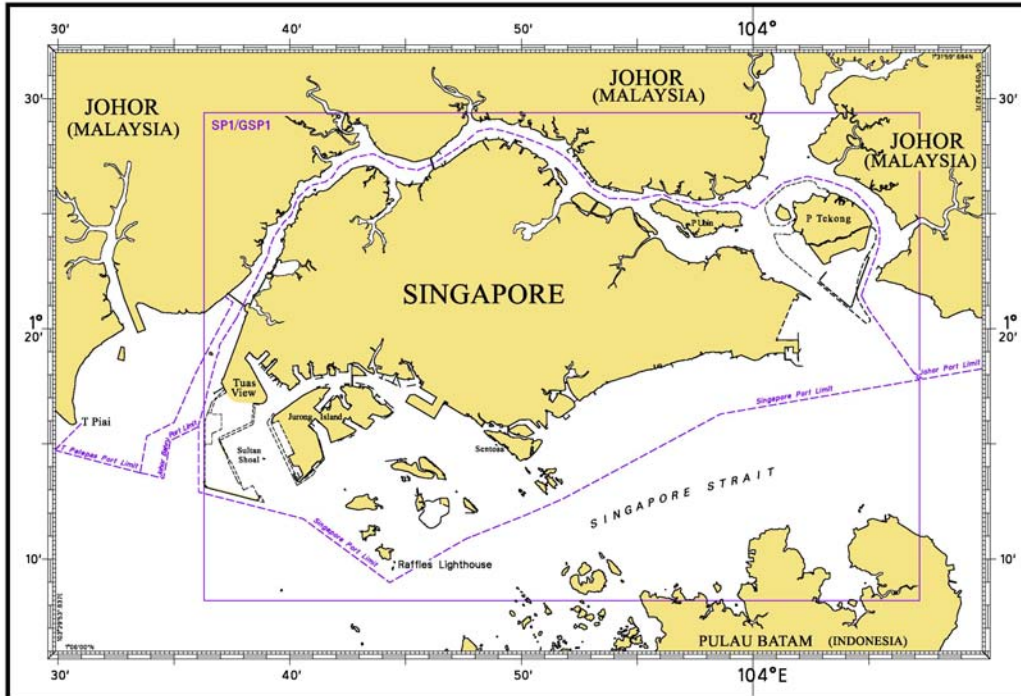
## INDEX OF CHARTS AND PUBLICATIONS

NOTICE NO.	DESCRIPTION	PAGE NO.	NOTICE NO.	DESCRIPTION	PAGE NO.
-	Index of Singaporean Charts	101	-	Singapore Electronic Navigational Charts (ENC) Distributors	123
-	Index of Dual Badged Charts	102			
-	Index of Singapore Electronic Navigational Charts (ENC)	103			
-	New Edition Dual Badged Charts	104			
*50	SP1/GSP1	107			
51	200	107			
52	200	107			
53	202, 502, 503	107, 108			
*54	502, 503	107, 108			
*55P	Temporary and Preliminary Notices	109			
*56	Port Marine Notices	111			
*57	Strait of Singapore - Damage to submarine cables caused by ships anchoring at non-designated anchorage areas.	111			
*58	Singaporean Print On Demand (POD) Charts	111			
*59	Updating of Publication "SINGAPORE PORT INFORMATION 2008/2009 EDITION"	113			
-	Reprint of Radio Navigational Warnings	114			
-	Reprint of Admiralty Notices to Mariners for Dual Badged Charts	116			

\* Denotes information are based on Singapore source.

# I INDEX OF CHARTS AND PUBLICATIONS

## INDEX OF SINGAPOREAN CHARTS



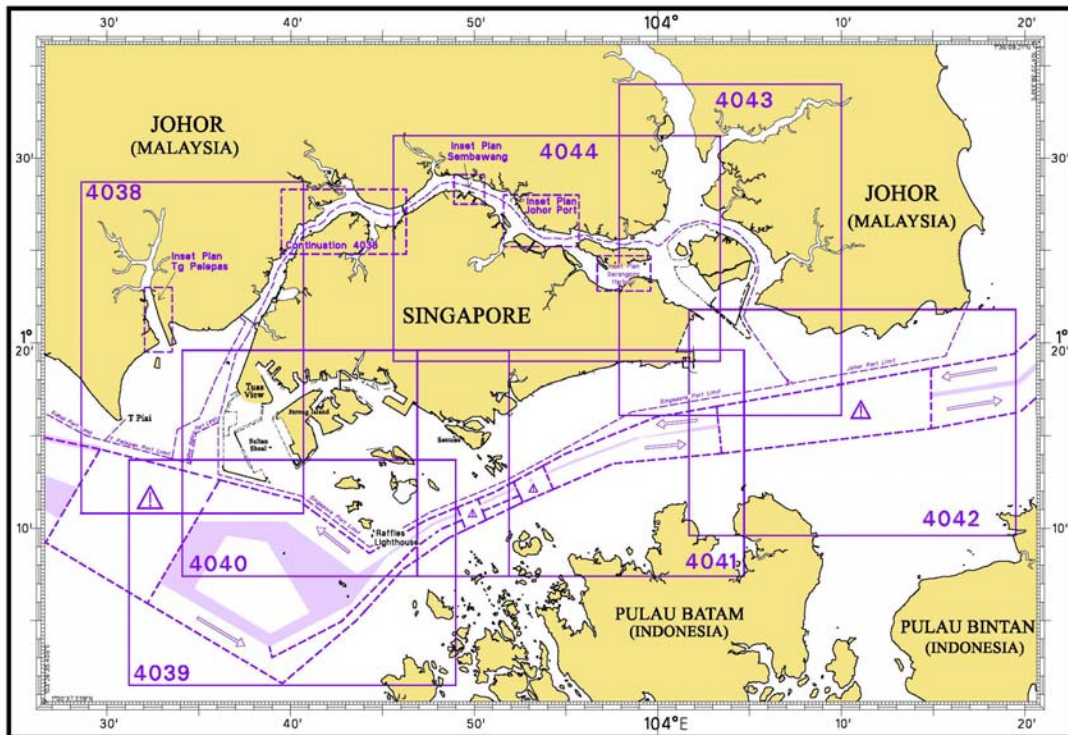
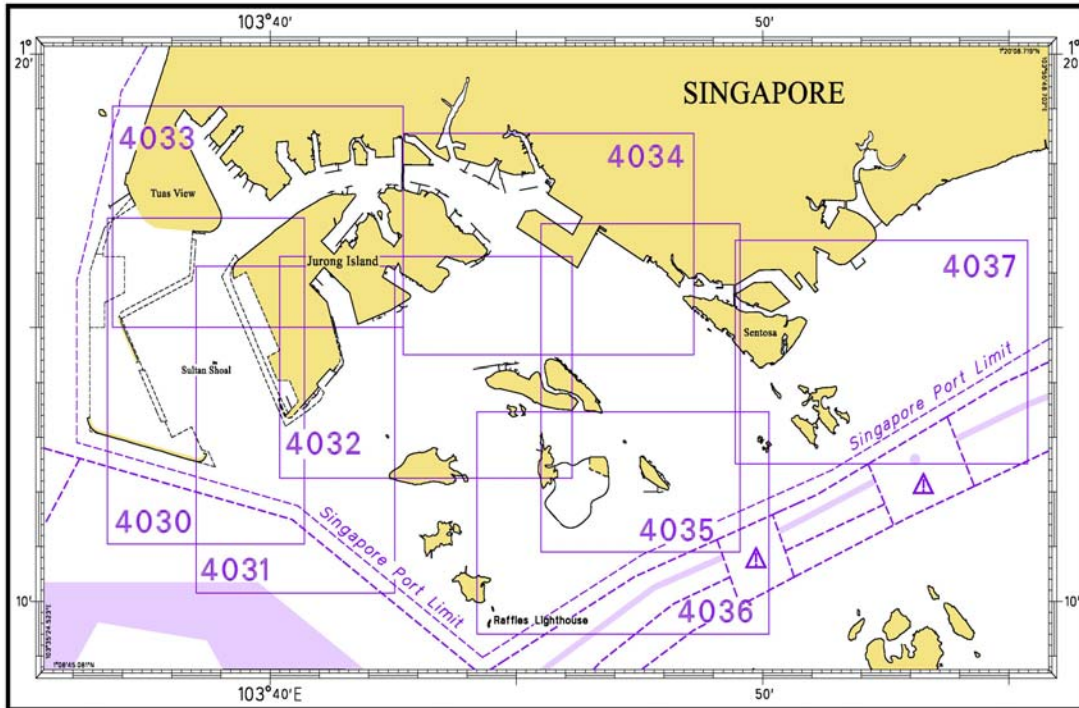
**Notes:**

Updated SINGAPOREAN Charts (excluding Charts SP1/GSP1) are available through our Print On Demand (POD) Chart Service. For more information, refer to Section III – Navigational Information and these charts can be purchased from our authorised Chart Agents:

DPM (Singapore) Pte Ltd, E.W. Liner Charts & Publications Pte Ltd and Motion Smith.

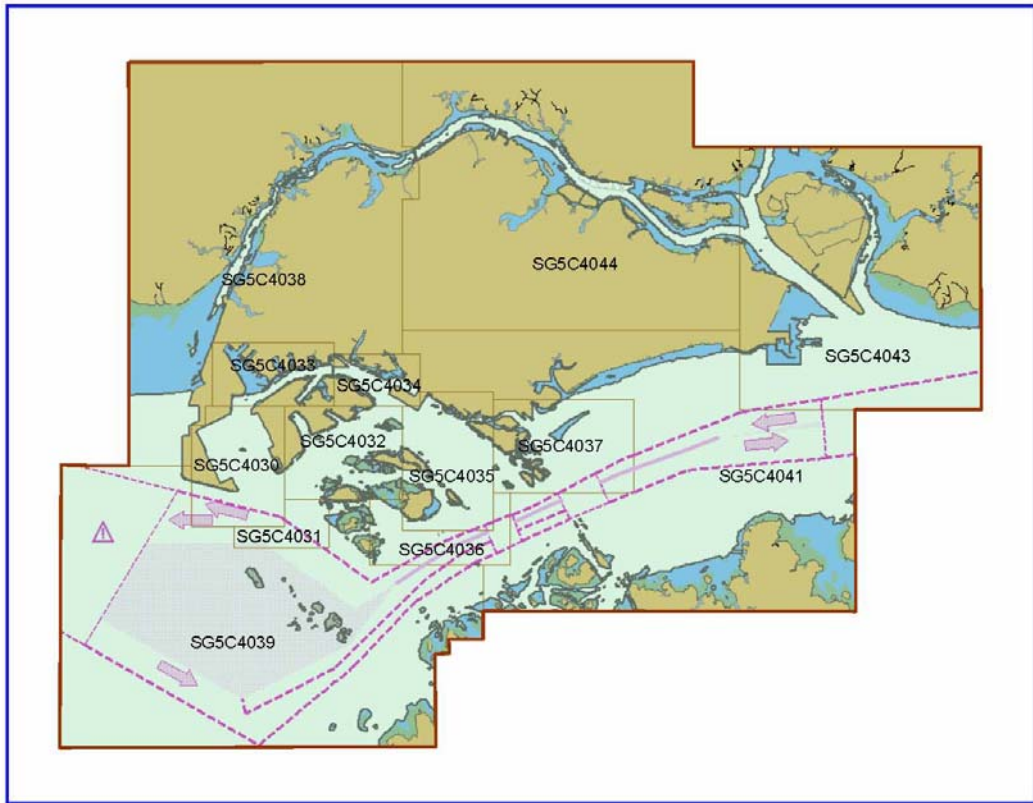
I  
INDEX OF CHARTS AND PUBLICATIONS

INDEX OF DUAL BADGED CHARTS



I  
INDEX OF CHARTS AND PUBLICATIONS

INDEX OF SINGAPORE ELECTRONIC NAVIGATIONAL CHARTS (ENC)



## II NEW PUBLICATIONS

### NEW EDITION DUAL BADGED CHARTS PUBLISHED ON 21 MAY 2009

The following new edition charts are jointly produced by MPA, Hydrographic Department and the United Kingdom Hydrographic Office :

Chart Number	:	4036
Title	:	Port of Singapore – Raffles Lighthouse To The Sisters
Coverage	:	Lat 1° 09.40' N 1° 13.47' N Long 103° 44.20' E 103° 50.13' E
Scale	:	1 : 10 000
Date Published	:	21 May 2009
Size of Chart	:	1100.0 X 750.1mm
Remarks	:	This new edition includes updated surveys covering these areas : <ul style="list-style-type: none"> <li>• Southern Fairway</li> <li>• Jong Fairway</li> <li>• Western Anchorages</li> <li>• North of Pulau Semakau</li> <li>• Approaches to Shell SBM</li> </ul>

The existing chart of the same number published on 5 July 2007 is superseded.

Chart Number	:	4037
Title	:	Port of Singapore – Keppel Harbour, Tanjong Pagar Terminal and Approaches
Coverage	:	Lat 1° 12.52' N 1° 16.59' N Long 103° 49.40' E 103° 55.34' E
Scale	:	1 : 10 000
Date Published	:	21 May 2009
Size of Chart	:	1101.8 X 750.1mm
Remarks	:	This new edition includes updated surveys covering these areas : <ul style="list-style-type: none"> <li>• East Keppel Fairway</li> <li>• Eastern Fairway</li> <li>• Southern Fairway</li> <li>• Sisters Fairway</li> <li>• Eastern Anchorage</li> <li>• East of Brani Causeway</li> <li>• Sentosa Cove</li> <li>• South of Marina South</li> </ul>

The existing chart of the same number published on 24 May 2007 is superseded.

## II NEW PUBLICATIONS

### NEW EDITION DUAL BADGED CHARTS TO BE PUBLISHED ON 23 JULY 2009

The following new edition charts are jointly produced by MPA, Hydrographic Department and the United Kingdom Hydrographic Office :

Chart Number : 4039  
 Title : Indonesia, Singapore and Malaysia  
 Western Approaches to Main Strait  
 Coverage : Lat 1° 01.50' N 1° 13.70' N  
 Long 103° 31.20' E 103° 49.00' E  
 Scale : 1 : 30 000  
 Date Published : 23 July 2009  
 Size of Chart : 1100.7 x 749.5mm  
 Remarks : This new edition includes updated surveys covering these areas :  
 • South of Tuas View Extension  
 • Shell SBM  
 • South of Pulau Bukom  
 • Selat Sinki

The existing chart of the same number published on 29 March 2007 is superseded.

Chart Number : 4040  
 Title : Singapore, Indonesia and Malaysia  
 Tuas View to Pulau Sakijang Bendera  
 (S. John's Island)  
 Coverage : Lat 1°07.40'N 1°19.60'N  
 Long 103°34.10'E 103°51.90'E  
 Scale : 1 : 30 000  
 Date Published : 23 July 2009  
 Size of Chart : 1100.6 X 749.5 mm  
 Remarks : This new edition includes updated surveys covering these areas :  
 • South of Tuas View Extension  
 • Shell SBM  
 • South of Pulau Bukom  
 • West Keppel Fairway  
 • Sisters Fairway  
 • Southern Fairway  
 • West of Sentosa  
 • Approaches to Jong Fairway  
 • Selat Sinki

The existing chart of the same number published on 24 July 2008 is superseded.

## II NEW PUBLICATIONS

### NEW EDITION DUAL BADGED CHARTS TO BE PUBLISHED ON 23 JULY 2009

The following new edition charts are jointly produced by MPA, Hydrographic Department and the United Kingdom Hydrographic Office :

Chart Number : 4041  
 Title : Singapore and Indonesia  
 Pulau Sebarok to Changi  
 Coverage : Lat 1° 07.40' N 1° 19.60' N  
 Long 103° 46.90' E 104° 04.70' E  
 Scale : 1 : 30 000  
 Date Published : 23 July 2009  
 Size of Chart : 1100.6 x 749.5 mm  
 Remarks : This new edition includes updated surveys covering these areas :

- Shell SBM
- Southern Fairway
- East Keppel Fairway
- West of Sentosa
- Approaches to the Eastern Anchorages
- Changi Prohibited Area
- Eastern Cable Corridor

The existing chart of the same number published on 24 July 2008 is superseded.

Chart Number : 4043  
 Title : Malaysia and Singapore  
 Kuala Johor and Sungai Johor  
 Coverage : Lat 1°16.10' N 1°34.00' N  
 Long 103°57.90' E 104°10.00' E  
 Scale : 1 : 30 000  
 Date Published : 23 July 2009  
 Size of Chart : 748.1 X 1099.6 mm  
 Remarks : This new edition includes updated surveys covering these areas :

- Around Pulau Tekong
- Kuala Johor
- North of Pulau Ubin


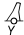

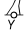





The existing chart of the same number published on 5 July 07 is superseded.

Chart Number : 4044  
 Title : Singapore and Malaysia  
 Johor Strait, Eastern Part  
 Coverage : Lat 1° 19.00' N 1° 31.20' N  
 Long 103° 45.60' E 104° 03.40' E  
 Scale : 1 : 30 000  
 Date Published : 23 July 2009  
 Size of Chart : 1100.5 x 749.5 mm  
 Remarks : This new edition includes updated surveys covering these areas :

- Johor Causeway to Serangoon Harbour
- Kuala Johor
- North of Pulau Ubin

The existing chart of the same number published on 22 Feb 07 is superseded.

## II NOTICES TO MARINERS AND CHART CORRECTIONS

<b>SP1</b>	4Ed 15/01/09 Last NM 43/2009	(HD/HE025/55/2009)		<b>*NM 50/2009</b>
<b>Delete</b>	 <i>FI(2)Y.4s ECC 1</i>		1°13.15'N	103°46.73'E
		(HD/HE025/56/2009)		
	 <i>FI.Y.6s ECC 2</i>		1°13.51'N	103°45.68'E
		(HD/HE025/57/2009)		
	 <i>FI.Y.8s ECC 3</i>		1°13.67'N	103°45.28'E
		(HD/HE025/58/2009)		
	 <i>FI.Y.4s ECC 4</i>		1°13.46'N	103°45.32'E
<hr/>				
<b>200</b>	2Ed 30/11/05 Last NM 17/2009	(Peninsular Malaysia Marine Dept. Notices 24/2009 )		<b>NM 51/2009</b>
<b>Insert</b>	 <b>F.R.5m5M</b>		2°31.82'N	101°47.11'E
		(Admiralty Notices16/1988/2009)		<b>NM 52/2009</b>
	 <i>FI(2)R.10s Tengah</i>		2°52.67'N	101°15.32'E
<hr/>				
<b>202</b>	5Ed 19/10/06 Last NM 35/2009	(Admiralty Notices19/2269/2009)		<b>NM 53/2009</b>
<b>Insert</b>	 <b>PA</b>	(a)	1°10.62'N	104°15.94'E
	 <i>FI(2)5s</i> , close N of :		(a) above	
<hr/>				
<b>502</b>	4Ed 25/09/08 Last NM 14/2009	(Admiralty Notices19/2269/2009)		<b>NM 53/2009</b>
<b>Insert</b>	 <b>PA</b>	(a)	1°10.62'N	104°15.94'E
	 <i>FI(2)5s</i> , close N of :		(a) above	
		(HD/HY/L00902109)		<b>*NM 54/2009</b>
<b>Insert</b>	submarine cable joining positions		1°18.97'N	104°13.79'E
			1°18.77'N	104°13.90'E
			1°18.48'N	104°14.66'E
			1°18.20'N	104°14.21'E
			1°16.95'N	104°14.90'E
			1°17.18'N	104°16.34'E
			1°17.38'N	104°16.63'E
		(Chart border)	1°17.47'N	104°17.31'E

## II NOTICES TO MARINERS AND CHART CORRECTIONS

<b>Delete</b>	submarine cable joining positions		1°18-97'N 1°19-24'N 1°19-33'N 1°19-19'N 1°18-05'N 1°17-87'N	104°13-79'E 104°15-01'E 104°15-77'E 104°15-79'E 104°16-74'E 104°17-31'E
		(Chart border)		
<hr/>				
<b>503</b>	3Ed 25/09/08	(Admiralty Notices 19/2269/2009)		<b>NM 53/2009</b>
<b>Insert</b>	 <b>PA</b>  <b>FI(2)5s</b> , close N of :	(a)	1°10-62'N	104°15-94'E
			(a) above	
		(HD/HY/L00902109)		<b>*NM 54/2009</b>
<b>Insert</b>	submarine cable joining positions		1°18-97'N 1°18-77'N 1°18-48'N 1°18-20'N 1°16-95'N 1°17-18'N 1°17-38'N 1°17-52'N 1°17-41'N 1°17-44'N	104°13-79'E 104°13-90'E 104°14-66'E 104°14-21'E 104°14-90'E 104°16-34'E 104°16-63'E 104°17-70'E 104°17-79'E 104°18-02'E
<b>Delete</b>	submarine cable joining positions		1°18-97'N 1°19-24'N 1°19-33'N 1°19-19'N 1°18-05'N 1°17-86'N 1°17-44'N	104°13-79'E 104°15-01'E 104°15-77'E 104°15-79'E 104°16-74'E 104°17-35'E 104°18-02'E

---

## II TEMPORARY AND PRELIMINARY NOTICES

### \*(NM 55P/2009) VIBRO CORING FROM THE SINGAPORE PORT LIMIT AND THE WEST BOUND LANE OF THE TRAFFIC SEPARATION SCHEME IN THE SINGAPORE STRAIT.

#### **Purpose**

Mariners navigating in the Singapore Strait are hereby informed that vibro coring operations will be carried out from the Singapore Port Limit and the westbound lane of the Traffic Separation Scheme.

#### **Date**

With effect from 1 July 2009 until 31 July 2009.

#### **Duration**

Day light operation 0700 to 1800 hours, 7 days a week.

#### **Working Area**

Within an area bounded by the following coordinates from Singapore Port Limit and the area within the westbound lane of the Traffic Separation Scheme (please see chart attached):

WGS 84 Datum		
Points	Lat. (N)	Long. (E)
1	1°15.81'	103°57.71'
2	1°14.69'	103°58.17'
3	1°13.17'	103°54.45'
4	1°13.87'	103°54.13'

#### **Vessels**

Vessels equipped with Vibro Core Sampler will be deployed for the work.

#### **Navigational Broadcast**

Navigational warning broadcast will be promulgated by (VTIS) on VHF CH 09 and NAVTEX to inform vessels of the seabed material sampling operation. Mariners are to maintain a listening watch for the above safety information.

#### **Caution**

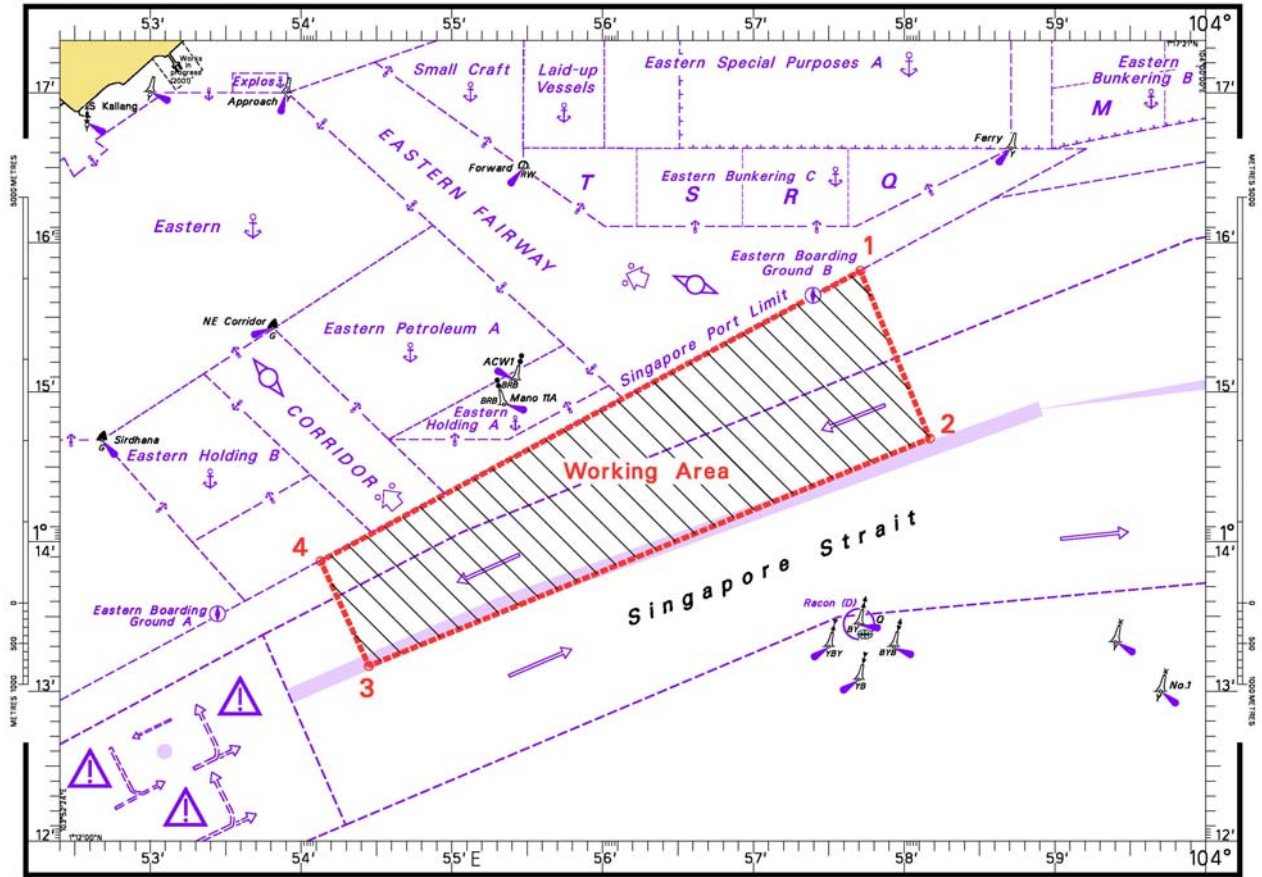
Mariners are advised to navigate with caution and proceed at slow speed when approaching the area.

Charts affected: SP1/GSP1, 202, 501, 502, 4037 & 4041

Source: HD/DB67/2/2009

## II TEMPORARY AND PRELIMINARY NOTICES

### VIBRO CORING FROM THE SINGAPORE PORT LIMIT AND THE WEST BOUND LANE OF THE TSS IN THE SINGAPORE STRAIT



### III NAVIGATIONAL INFORMATION

**\*(NM 56/2009) PORT MARINE NOTICES**

The following PMNs have been shortlisted, as they would be of particular interest to mariners.

These notices can be accessed directly from MPA website:

[http://www.mpa.gov.sg/sites/port\\_and\\_shipping/circulars\\_and\\_notices/port\\_marine\\_notices.page](http://www.mpa.gov.sg/sites/port_and_shipping/circulars_and_notices/port_marine_notices.page)

<b>PMN No.</b>	<b>Subject</b>
52/2009	Construction of third dolphin at Sakra jetty MK 34 at Selat Sakra.
58/2009	Environmental improvement works at Admiralty Road West.

**\*(NM 57/2009) STRAIT OF SINGAPORE – DAMAGE TO SUBMARINE CABLES CAUSED BY SHIPS ANCHORING AT NON-DESIGNATED ANCHORAGE AREAS.**

There has been an increase in the number of reports on submarine cable damage caused by indiscriminate anchoring of vessels at non-designated anchorage areas in the Strait of Singapore.

Mariners are advised to carefully ascertain the location of submarine cables from nautical charts and publications and are strongly urged to avoid anchoring in the vicinity of these cables in the Strait of Singapore.

Mariners are hereby given notice that the Maritime and Port Authority of Singapore (MPA) as the Vessel Traffic Information Authority will closely monitor the identities and locations of vessels anchoring in the vicinity of submarine cables in the Strait of Singapore.

In the event of submarine cable damage, the MPA will promptly share information with the cable owner(s) and other interested parties to facilitate legal proceedings to recover compensation from the owners and masters of vessels responsible for the damage. Such cable damage can cause severe financial loss to cable owners and businesses that rely on the communications link provided by the submarine cables.

Mariners are also reminded that indiscriminate anchoring at non-designated anchorages and in the traffic separation scheme in the Strait of Singapore interferes with navigational safety and can result in prosecution action, where applicable.

Issued by Maritime and Port Authority of Singapore.

**\*(NM 58/2009) SINGAPOREAN PRINT ON DEMAND (POD) CHARTS**

**Print On Demand (POD)** Charts are the most up-to-date paper nautical charts printed for navigational use. These nautical charts are produced in accordance with the International Hydrographic Organisation (IHO) charting specifications. These official nautical charts are continually updated to the latest Notices to Mariners before they are printed and sold to users.

These POD Charts include 200, 201, 202, 500, 501, 502, 503.

**III**  
**NAVIGATIONAL INFORMATION**

**BENEFITS TO OUR CUSTOMERS**

**Convenience**

Customers need not make numerous hand corrections to the nautical charts before use. In addition the updated POD Charts are more accurate and reliable than offset printed charts with hand corrections.

**Clarity**

Clarity in the presentation of updated information as compared to lithographic printed charts, where in some cases there are several overlapping corrections over existing information.

**Coverage**

The POD Charts cover the Malacca and Singapore Straits, from One Fathom Bank to Horsburgh Lighthouse.

---

**III**  
**AMENDMENTS TO PUBLICATIONS**

**\*(NM 59/2009) UPDATING OF PUBLICATION "SINGAPORE PORT INFORMATION 2008/2009 EDITION"**

1. Page 148 - Item 29

**PULAU BUKOM (SHELL REFINERY) (1°14.0'N, 103°46.1'E)**

Berth	Depth Alongside (Year Surveyed)	
	Delete	Insert
<b>Shell SBM</b>	24.6m(2007)	<b>24.6m(2009)</b>

Source : HD/HY Code F00103409

---

**IV**  
**REPRINT OF RADIO NAVIGATIONAL WARNINGS**

TT026 (AMENDED ON 21 APR 09)

TUAS RECLAMATION WORKING AREAS AT WESTERN PART OF SINGAPORE PORT ARE MARKED BY FL.WG BUOYS (REF.PMN: 47/2009).

1	01°15.163'N	103°36.980'E	-
2a	01°13.675'N	103°37.687'E	-
3a	01°13.513'N	103°37.333'E	-
4	01°13.315'N	103°37.428'E	-
5	01°13.291'N	103°37.870'E	-
6	01°12.916'N	103°38.049'E	-
7	01°12.734'N	103°38.754'E	-
8	01°12.458'N	103°38.891'E	BYB PILLAR / VQ(3) 5S/PKHDB-24
9	01°13.117'N	103°36.342'E	-
10	01°13.652'N	103°36.342'E	-
11	01°13.723'N	103°36.741'E	-
12	01°14.370'N	103°36.647'E	-
13	01°14.370'N	103°36.342'E	-
14	01°14.997'N	103°36.342'E	-
15	01°14.997'N	103°36.635'E	-

MARINERS ARE ADVISED TO PLOT THE WORKING AREAS ON APPROPRIATE CHARTS.

TT173

VSLS IN EAST JOHOR STRAIT ARE ADVISED TO NAVIGATE WITH CAUTION WHEN NEAR THE PROJECT AREAS OFF PU.TEKONG, PU.SERANGOON, CHANGI AND MALANG PAPAN AS SHALLOW WATER AREAS EXIST. VSLS ARE ADVISED TO KEEP LOOKOUT FOR TUGS AND BARGES NAVIGATING NEAR THE PROJECT AREAS AND PASSENGER FERRIES CROSSING BETWEEN CHANGI AND PULAU TEKONG AND VICINITY OF PASIR GUDANG.

TT352

DAYMARK SIGNALS AT RAFFLES LIGHT HOUSE IS OUT OF ORDER.

TT611

A SHIP REPORTED LOSING HER PORT ANCHOR AND 12 SHACKLES OF ANCHOR CHAIN, IN APROX POSN 01°11.55'N 103°52.52'E, OFF BATU BERHENTI BEACON.

TT619

DREDGER GERARDUS MERCATOR/QUEEN OF PENTA OCEAN IS CONDUCTING DREDGING OPERATIONS IN POSITIONS BOUNDED BY COORDINATES:

01°15.827' N 103°57.737' E

01°14.865' N 103°58.134' E

01°13.298' N 103°54.401' E

01°13.884' N 103°54.131' E

VESSELS ARE ADVISED TO PROCEED AT SAFE SPEED AND TO GIVE A WIDE BERTH.

TT631

A WOODEN CRAFT SUNK AT 01°19.49'N 104° 02.79'E.

TT753

A SMALL WOODEN CARGO BOAT 10M IN LENGTH SUNK AT 01°15.73'N 103°32.1'E.

TT755 (AMENDED 180109 1314Z)

THE POSITION OF THE PROBABLE SUNKEN CRAFT IS LAT 01°18.71'N LONG 104°21.54'E WITH A LEAST DEPTH OF 57 METRES.

**IV**  
**REPRINT OF RADIO NAVIGATIONAL WARNINGS**

TT757

A TUG WAS REPORTED SUNK IN LAT 01°22.41'N LONG 104°23.15'E.

TT779 (AMENDED 040420Z)

31 MAR 2009 1245UTC

SALVAGE OPERATIONS ARE IN PROGRESS BY TWO TUGBOATS AND A BARGE IN POSITION  
01°22.34'N 104°23.30'E. VESSELS ARE ADVISED TO KEEP A LOOKOUT, PASS AT SLOW SPEED AND  
TO GIVE A WIDE BERTH.

ISSUED BY SINGAPORE PORT OPERATION CONTROL CENTRE  
(as at 24 May 2009)

---

V  
**REPRINT OF ADMIRALTY NOTICES TO MARINERS  
 FOR DUAL BADGED CHARTS**

These notices can be accessed directly from UKHO Website:

<http://www.ukho.gov.uk/ProductsandServices/MaritimeSafety/Pages/NMPublic.aspx>

**2269\* INDONESIA – Sumatera – Pulau Bintan – Teluk Seborg North-westwards – Wreck. Buoy.**

Source: DG SeaComm

**Chart 4042** [ *previous update 1209/09* ] WGS84 DATUM

Insert  **PA** (a) 1° 10'.62N., 104° 15'.94E.  
 **FI(2)5s**, close N of : (a) above

**2414\* SINGAPORE – Pulau Tekong Westwards – Beacon.**

Source: Maritime Port Authority of Singapore

**Chart 4043** [ *previous update 1211/09* ] WGS84 DATUM

Delete  1° 24'.31N., 104° 01'.20E.

**Chart 4044** [ *previous update 1790/09* ] WGS84 DATUM

Delete  1° 24'.31N., 104° 01'.20E.

**2418\* SINGAPORE – Pulau Bukom Eastwards and Jurong Island Westwards – Wreck. Obstruction. Light-beacon. Depth.**

Light List Vol. F, 2008/09, 1690.1

Source: Maritime Port Authority of Singapore



**Chart 4030** [ *previous update New Edition 22/05/2008* ] WGS84 DATUM

Delete  **247 Wk** 1° 13'.709N., 103° 37'.672E.

**Chart 4038** [ *previous update 548/09* ] WGS84 DATUM

Delete  **247 Wk** 1° 13'.71N., 103° 37'.67E.

**Chart 4040** [ *previous update 1208/09* ] WGS84 DATUM

Substitute  **29 Obstn** for  **Q(6)+LFI.15s4m6M** (collapsed) (a) 1° 14'.18N., 103° 46'.44E.

Delete  **247 Wk** 1° 13'.71N., 103° 37'.67E.

Depth **67** and associated 10m contour, close SSW of: (a) above

**2419\* SINGAPORE – Selat Pandan, East Jurong Channel and Damar Laut Basin – Coastline. Depths. Obstructions. Buoy. Dredged depth. Legends.**

Source: Maritime Port Authority of Singapore

**Chart 4032** [ *previous update 1793/09* ] WGS84 DATUM

Insert the accompany block, showing amendments to coastline, depths and obstructions, centred on: 1° 15'.80N., 103° 43'.65E.

V  
**REPRINT OF ADMIRALTY NOTICES TO MARINERS  
 FOR DUAL BADGED CHARTS**

**Chart 4034** [ *previous update 2010/09* ] WGS84 DATUM

Insert	the accompany block, showing amendments to coastline, depths and obstructions, centred on:	1° 15'.80N., 103° 43'.65E.
Amend	designation of buoy to, OVPJ dredged depth to, <i>10.2m (2009)</i> , centred on:	1° 17'.947N., 103° 43'.897E. 1° 18'.460N., 103° 42'.990E.
Substitute	legend, OVPJ EAST for legend, Gatx East, at light legend, OVPJ WEST for legend, Gatx West, at light	1° 17'.817N., 103° 44'.030E. 1° 17'.894N., 103° 43'.842E.

**2420\* SINGAPORE – Cruise Bay – Depths. Dredged depths. Obstruction. Legend. Mooring buoy.**

Source: Maritime Port Authority of Singapore

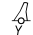
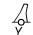
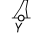


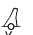
**Chart 4035** [ *previous update 1792/09* ] WGS84 DATUM

Insert	the accompany block, showing amendments to depths, dredged depths, obstruction, legend and mooring buoy, centred on:	1° 15'.69N., 103° 49'.07E.
--------	----------------------------------------------------------------------------------------------------------------------	----------------------------

**2421\* SINGAPORE – Pasir Panjang Fairway – West Keppel Fairway – Maritime limit. Buoyage. Reclamation area. Works. Depths. Submarine pipelines. Submarine cables. Legends. Fairway.**  
**Cautionary note.**

Source: Maritime Port Authority of Singapore

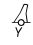

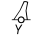



**Chart 4034** [ *previous update 2419/09* ] WGS84 DATUM

Insert	maritime limit, pecked line, joining:	1° 16'.572N., 103° 46'.940E. (limit of dredged area) (a) 1° 16'.417N., 103° 46'.849E. (b) 1° 16'.307N., 103° 46'.870E.  (  ) and (c) 1° 15'.872N., 103° 46'.613E.  (  ) (d) 1° 15'.513N., 103° 46'.566E.  (  )
	 <i>Fl(2)Y.8s PKH V1</i>	(a) above
Delete	former maritime limit, pecked line, joining:	(b) above 1° 16'.396N., 103° 47'.101E. 1° 16'.345N., 103° 47'.186E. (existing limit) and (c) above 1° 15'.835N., 103° 46'.675E. (d) above
	 <i>Fl.Y.2s PKH V5</i>	1° 16'.276N., 103° 47'.304E.
	former  <i>Fl(2)Y.8s PKH V1</i>	1° 16'.363N., 103° 47'.015E.

**V**  
**REPRINT OF ADMIRALTY NOTICES TO MARINERS**  
**FOR DUAL BADGED CHARTS**

**2421\* SINGAPORE – Pasir Panjang Fairway – West Keppel Fairway – Maritime limit. Buoyage. Reclamation area. Works. Depths. Submarine pipelines. Submarine cables. Legends. Fairway. Cautionary note. (continued)**

**Chart 4035** [ *previous update 2420/09* ] WGS84 DATUM

Insert	maritime limit, pecked line, joining:	<p>1° 16'.572N., 103° 46'.940E.          (limit of dredged area)          (a) 1° 16'.417N., 103° 46'.849E.          (b) 1° 16'.307N., 103° 46'.870E.</p> <p>(  )          and          (c) 1° 15'.872N., 103° 46'.613E.</p> <p>(  )          (d) 1° 15'.513N., 103° 46'.566E.</p> <p>(  )</p>
	 <i>Fl(2)Y.8s PKH V1</i>	(a) above
Delete	former maritime limit, pecked line, joining:	<p>(b) above          1° 16'.396N., 103° 47'.101E.          1° 16'.345N., 103° 47'.186E.          (existing limit)          and          (c) above          1° 15'.835N., 103° 46'.675E.          (d) above</p>
	 <i>Fl.Y.2s PKH V5</i>	1° 16'.276N., 103° 47'.304E.
	former  <i>Fl(2)Y.8s PKH V1</i>	1° 16'.363N., 103° 47'.015E.

**Chart 4040** [ *previous update 2418/09* ] WGS84 DATUM

Insert	the accompany block, showing new reclamation area and amendments to limit of works area, buoyage, depths, submarine pipelines, submarine cables, legends and fairway limits, centred on:	1° 15'.80N., 103° 47'.10E.
Delete	note, RECLAMATION WORKS IN PROGRESS, centred on:	1° 16'.60N., 103° 49'.02E.

**Chart 4041** [ *previous update 2011/09* ] WGS84 DATUM

Insert	the accompany block, showing new reclamation area and amendments to limit of works area, buoyage, depths, submarine pipelines, submarine cables, legends and fairway limits, centred on:	1° 15'.80N., 103° 47'.40E.
Delete	note, RECLAMATION WORKS IN PROGRESS, centred on:	1° 18'.48N., 103° 53'.90E.

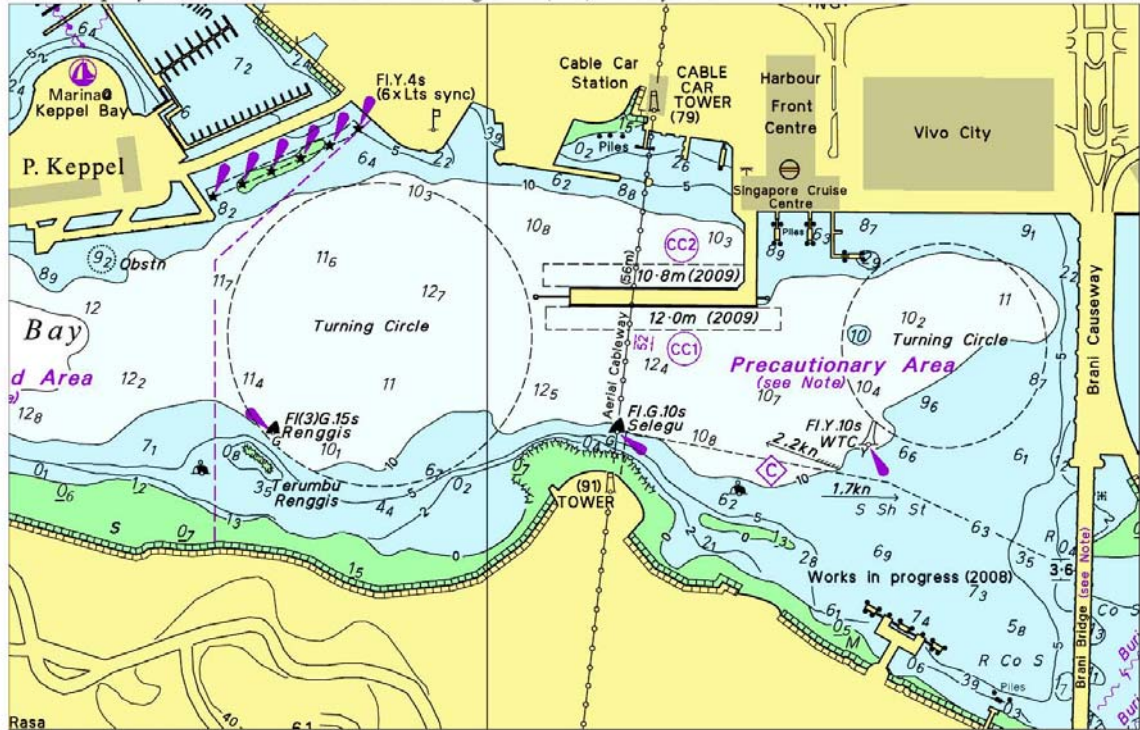
Updated to Admiralty Notices to Mariners Edition No. 22 of 2009 dated 28 May 2009.





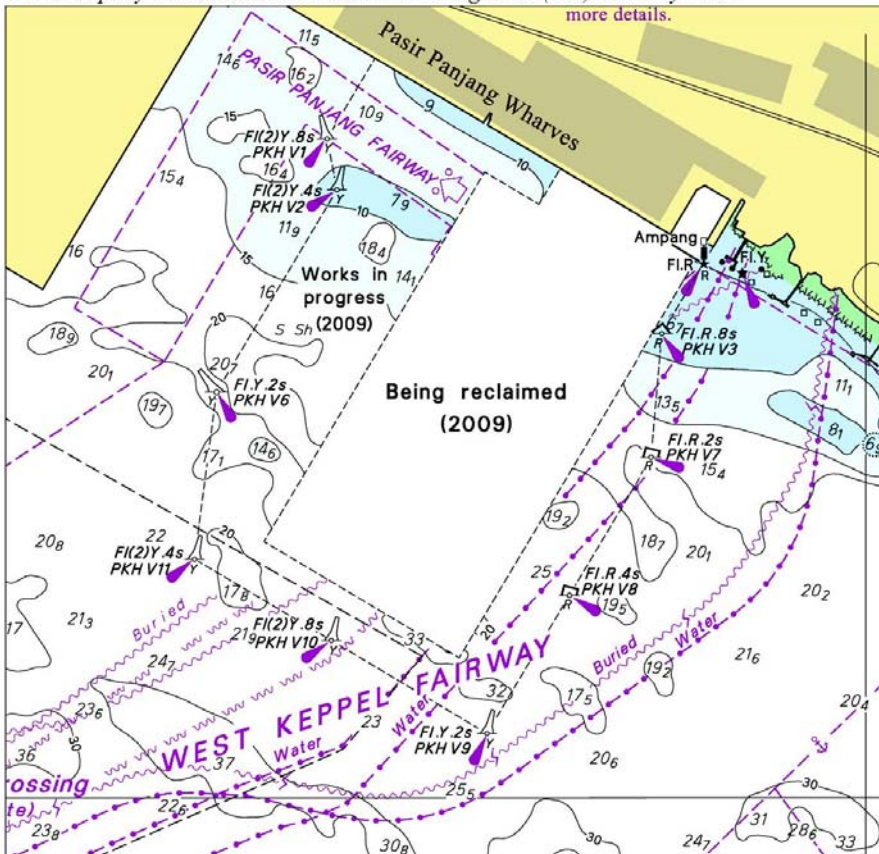
V  
**REPRINT OF ADMIRALTY NOTICES TO MARINERS  
 FOR DUAL BADGED CHARTS**

To accompany Notice to Mariners 2420/09. Image Size (mm) 95.9 by 149.2



Block for Chart No 4035

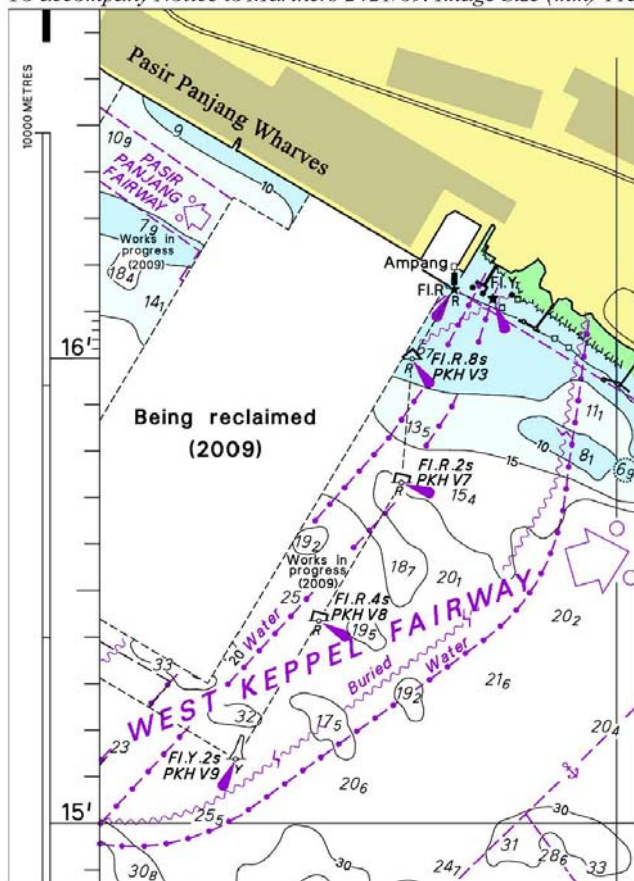
To accompany Notice to Mariners 2421/09. Image Size (mm) 112.7 by 116.7



Block for Chart No 4040

V  
REPRINT OF ADMIRALTY NOTICES TO MARINERS  
FOR DUAL BADGED CHARTS

To accompany Notice to Mariners 2421/09. Image Size (mm) 115.5 by 83.1



Block for Chart No 4041

**SINGAPORE ELECTRONIC NAVIGATIONAL CHARTS (ENC) DISTRIBUTORS**  
Please approach any of the appointed distributors to purchase the Singapore ENC.

CONTACT PERSON	ADDRESS	TELEPHONE/FAX NO./EMAIL/WEBSITE
Mr Chong Chee Meng	DPM (Singapore) Pte Ltd 1 Maritime Square, #09-72 Harbour Front Centre, Singapore 099253	Tel. No.: +65 6270 4060 Fax No.: +65 6276 3858 Email: <a href="mailto:sales@dpmsingapore.com.sg">sales@dpmsingapore.com.sg</a> Website: <a href="http://www.dpmsingapore.com.sg">http://www.dpmsingapore.com.sg</a>
Mr Hamzah Akhbar	Kelvin Hughes(S) Pte Ltd 8 Pandan Avenue #02-00, Singapore 609384	Tel. No.: +65 6545 9880 ext.24 Fax No.: +65 6545 8892 Email: <a href="mailto:hamzah.akhbar@khsing.com">hamzah.akhbar@khsing.com</a> Website: <a href="http://www.kelvinhughes.co.uk">http://www.kelvinhughes.co.uk</a>
Mr Looi Keen Wai	Maritime Information Systems (MARIS) 52, Telok Blangah Road #01-06, Telok Blangah Centre, Singapore 058809	Tel. No.: +65 6276 1472 Fax No.: +65 6276 1473 Email: <a href="mailto:support@maris.sg">support@maris.sg</a> Website: <a href="http://www.maris.no">http://www.maris.no</a>
Ms Kathrine Bjaroy	Maritime Information System AS (MARIS) Danholmen 25, 3128 Notteroy, Norway	Tel. No.: +47 33 30 42 50 Fax No.: +47 33 30 42 51 Email: <a href="mailto:roar.moe@maris.no">roar.moe@maris.no</a> Website: <a href="http://www.maris.no">http://www.maris.no</a>
Mr Dave Chow En Wai	Motion Smith 15 Jalan Kilang Barat #08-01/05 Frontech Centre Singapore 159357	Tel. No.: +65 6220 5098 Fax No.: +65 6225 4902 Email: <a href="mailto:sales@motsmith.com">sales@motsmith.com</a> Website: <a href="http://www.motsmith.com">http://www.motsmith.com</a>
Mr Dominic Oliver	Transas Marine Pacific Pte Ltd 750C Chai Chee Road, #04-07, Technopark@Chai Chee, Singapore 469003	Tel. No.: +65 6443 3061 Fax No.: +65 6443 3025 Email: <a href="mailto:dominic@transas.com.sg">dominic@transas.com.sg</a> Website: <a href="http://www.transas.com.sg">http://www.transas.com.sg</a>
Mr Choy Kum Weng	Vector Services Pte Ltd 15 West Coast Highway, #02-14A Pasir Panjang Building Singapore 117861	Tel. No.: +65 6777 3602 Fax No.: +65 6777 9203 Email: <a href="mailto:kwchoy@pacific.net.sg">kwchoy@pacific.net.sg</a>
Mr George Arts	Marine Press of Canada 640 Rue St-Paul Ouest, Suite 300 Montreal (QC) Canada, H3C1L9	Tel. No.: (514) 866-8342 Fax No.: (514) 866-9050 Email : <a href="mailto:sales@marinepress.com">sales@marinepress.com</a> Website: <a href="http://www.marinepress.com">http://www.marinepress.com</a>
Mr Thomas Wilde	HanseNautic GmbH Bade & Hornig, Eckardt & Messtorff Herrengaben 31 D-20459 Hamburg, Germany	Tel. No.: +49 40 374 811-32 Fax No.: +49 40 366 400 Email: <a href="mailto:wilde@hansenautic.de">wilde@hansenautic.de</a> Website : <a href="http://www.HanseNautic.com">http://www.HanseNautic.com</a>
Ms Verena Borsos	SevenCs AG + Co. KG Ruhrstrasse 90, D-22761 Hamburg, Germany	Tel. No.: +49 40 853 58 6940 Fax No.: +49 40 853 58 6949 Email: <a href="mailto:sales@chartworld.com">sales@chartworld.com</a> Website : <a href="http://www.sevencs.com">http://www.sevencs.com</a>
Mr Keiji Shimizu	Japan Hydrographic Association Electronic Charts Division Daiichi Sogo Bldg, 6F 1-6-6, Hanedakuko, Ota-ku, Tokyo 144-0041, Japan	Tel. No.: +81 3 5708 7093 Fax No.: +81 3 5708 7094 Email: <a href="mailto:enc-support@jha.jp">enc-support@jha.jp</a> Website: <a href="http://www.jha.jp">http://www.jha.jp</a>

**SINGAPORE ELECTRONIC NAVIGATIONAL CHARTS (ENC) DISTRIBUTORS**  
Please approach any of the appointed distributors to purchase the Singapore ENC.

CONTACT PERSON	ADDRESS	TELEPHONE/FAX NO./EMAIL/WEBSITE
Mr Jester-Kim	E_MLX Co. Ltd Ssangyong Research No.2 Lab Sinseong-Dong 100 Yusong-Gu, Daejoen 305-804, Korea (ROK)	Tel. No.: +82 42 865 1893 Fax No.: +82 42 865 1884 Email: <a href="mailto:Jester-kim@emlx.co.kr">Jester-kim@emlx.co.kr</a>
Mr C G Kim	Korean Ocean Development Co. Ltd 2ND Fl, Dongbang Bldg, 25-4, 4 Ga Jungang-Dong, Jung-Gu, Busan, South Korea	Tel. No.: +82 514 66 0760 Fax No.: +82 514 65 9345 Email: <a href="mailto:sales@chartkorea.com">sales@chartkorea.com</a> Website: <a href="http://www.chartkorea.com">http://www.chartkorea.com</a>
Mr Kjell Nodland	Jeppesen Norway A/S P.O Box 212 , N-4379 Egersund, Norway	Tel No.: +47 514 64 700 Fax No: +47 514 64 701 Email: <a href="mailto:enc@c-map.no">enc@c-map.no</a> Website : <a href="http://www.c-map.no">http://www.c-map.no</a>
Ms Eva Hegland	PRIMAR STAVANGER Lervigsveien 36, P.O Box 60, N-4001 Stavanger, Norway	Tel. No.: +47 51 93 9500 Fax No.: +47 51 93 9501 Email: <a href="mailto:sales@primar.org">sales@primar.org</a> Website : <a href="http://www.primar-stavanger.org">http://www.primar-stavanger.org</a>
Mrs Christine Trickett	United Kingdom Hydrographic Office Admiralty Way, Taunton, Somerset TA1 2DN United Kingdom	Tel. No.: +44 (0)1823 337900 Fax No.: +44 (0)1823 284077 Emails: <a href="mailto:vargroup@ukho.gov.uk">vargroup@ukho.gov.uk</a> & <a href="mailto:christine.trickett@ukho.gov.uk">christine.trickett@ukho.gov.uk</a> Website: <a href="http://www.ukho.gov.uk">http://www.ukho.gov.uk</a>

### Agents for the Maritime and Port Authority of Singapore Publications

**Agent's name** : **DPM (Singapore) Pte Ltd**  
**Address** : 1 Maritime Square #09-72, HarbourFront Centre,  
Singapore 099253  
**Telephone** : (65) 6270 4060  
**Fax No.** : (65) 6276 3858  
**E-mail** : [sales@dpmsingapore.com.sg](mailto:sales@dpmsingapore.com.sg)  
**Internet Web Site** : <http://www.dpmsingapore.com.sg>

**Agent's name** : **E.W. Liner Charts & Publications Pte Ltd**  
**Address** : 102F, Pasir Panjang Road, #08-01, Citilink Warehouse Complex,  
Singapore 118530  
**Telephone** : (65) 6323 0773  
**Fax No.** : (65) 6323 0775  
**E-mail** : [ewliner@singnet.com.sg](mailto:ewliner@singnet.com.sg)  
**Internet Web Site** : <http://www.ewliner.com>

**Agent's name** : **Motion Smith**  
**Address** : 15 Jalan Kilang Barat  
#08-01/05 Frontech Centre,  
Singapore 159357  
**Telephone** : (65) 6220 5098  
: (After office hours: 8163 9993)  
**Fax No.** : (65) 6225 4902  
**E-mail** : [sales@motsmith.com](mailto:sales@motsmith.com)  
**Internet Web Site** : <http://www.motsmith.com>

## HYDROGRAPHIC NOTE - Instructions

1. Mariners are requested to notify the Chief Hydrographer, Maritime and Port Authority of Singapore, when new or suspected dangers to navigation are discovered, changes are observed in aids to navigation or where corrections to nautical publications may be necessary. Reports, which cannot be confirmed or are lacking in certain details should not be withheld.
2. Any ambiguities of time, positioning and depth should be stressed and any firm expectation of being able to check the information provided on a following voyage should be mentioned.
3. Mariners using satellite position fixing systems, eg. GPS, should provide details of equipment and datum used (where applicable). Where bearings (true or magnetic) are taken visually or by radar to fix a position, it should include more than two objects in order to provide a check on its accuracy. A position may also be defined by bearing and distance from a conspicuous object eg. beacon, lighthouse etc.
4. The note should include a tracing or a digital image of the chart used and the details should be clearly marked.
5. Echo sounders frequently register greater depths than the advertised maximum depth for the equipment, eg. a trace appearing at 50 metres may be in fact be 550 metres or even 1050 metres for equipment whose maximum depth is 500 metres. Erroneous depths caused by 2nd transmission error can usually be recognised by the following:
  - (a) the tracing being weaker than normal for the depth registered,
  - (b) the trace appearing to pass through the transmission line,
  - (c) the feathery nature of the trace.
6. An acknowledgement of receipt will be sent. When a Notice to Mariners is issued, the sender's vessel or name is quoted as the source unless the same information is also received in foreign Notices to Mariners.
7. Reports of shoals, uncharted dangers and defects in aids to navigation may also be made to the appropriate Singapore Port Operations Control Station on VHF Channels 10, 12, 14, 68 or 73.

# HYDROGRAPHIC NOTE

To:

Chief Hydrographer  
Hydrographic Department  
Maritime and Port Authority of Singapore  
460 Alexandra Road PSA Building #20-00  
Singapore 119963

Tel : (65) 6375 1227  
Fax : (65) 6278 7646  
Email : [hydrographic@mpa.gov.sg](mailto:hydrographic@mpa.gov.sg)

**Sender's Contact Details** :

Date : .....

Name of Vessel : .....

Address of Sender : .....

Tel : ..... Fax : .....

Email : .....

**Nature of Observation** :

General Location : .....

Subject : .....

Position : Lat. .... Long. ....

Charts Used : .....

Date & Time of Observation : .....

Details : .....

.....

.....

Attachment : .....

**Equipment Used** :

Type of Position Fixing : ..... GPS / DGPS ..... Others : .....

Type of Echo Sounder : .....

Name and Signature : .....

Ship's/Company's stamp : .....