

M P A
S I N G A P O R E

SINGAPOREAN NOTICES TO MARINERS

SECTION	CONTENT	Page
I	Index of Charts & Publications	107
II	New Publications	112
	Notices to Mariners and Chart Corrections	113
	Temporary and Preliminary Notices	114
III	Navigational Information	116
	Amendments to Publications	117
IV	Reprint of Radio Navigational Warnings	118
V	Reprint of Admiralty Notices to Mariners for Dual Badged Charts	119

The monthly Notices to Mariners contain corrective information affecting charts published by the Hydrographic Department, Maritime and Port Authority of Singapore. The information contained in these Notices should be updated on the charts affected. Notices under Section II apply only to the particular Singaporean Chart(s) indicated.

Mariners are requested to notify the Chief Hydrographer, Maritime and Port Authority of Singapore, immediately on the discovery of new dangers or suspected dangers to navigation and of changes or defects in aids to navigation. See Hydrographic Note on back page.

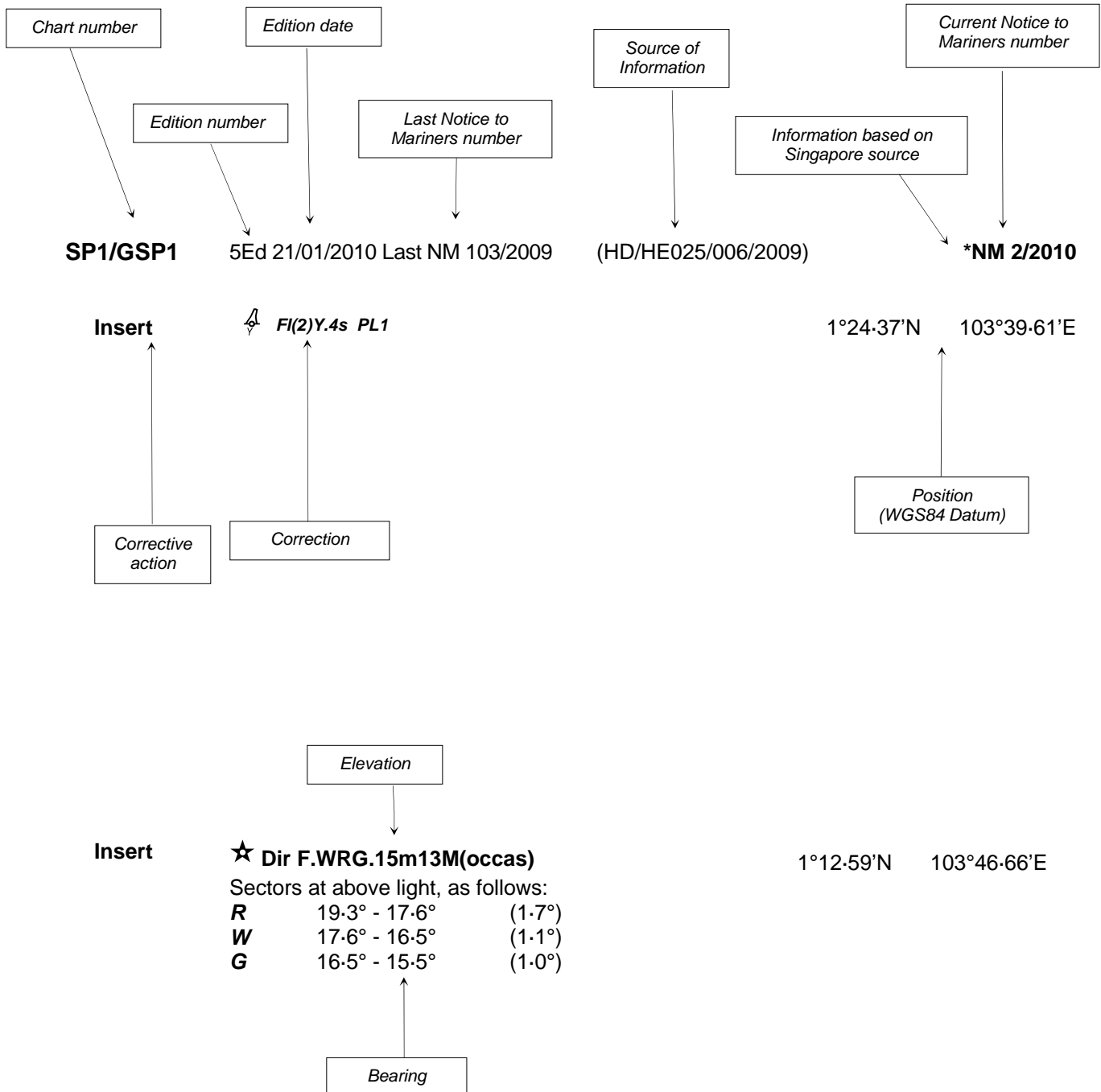
The monthly Singaporean Notices to Mariners can be accessed directly from the MPA website:
[http://www.mpa.gov.sg/sites/port_and_shipping/circulars_and_notices/singapore_notices_to_mariners\(ntm\).page](http://www.mpa.gov.sg/sites/port_and_shipping/circulars_and_notices/singapore_notices_to_mariners(ntm).page)

This service is offered free of charge.

Hydrographic Department
Maritime and Port Authority of Singapore
460 Alexandra Road
PSA Building #20-00
Singapore 119963
Tel: (65) 6375 1227
Fax: (65) 6278 7646

EXPLANATION OF FORMAT

The elements of a typical chart correction are explained below.



Notes:

- a) Notice to Mariners number followed by:
 - T** indicates a Temporary Notice (eg. ***NM 1T/2010**).
 - P** indicates a Preliminary Notice (eg. ***NM 3P/2010**).
- b) Bearings are true reckoned clockwise from 000° to 359° ; those relating to lights are from seaward.
- c) Heights and elevations are above Mean High Water Springs.

I
INDEX OF CHARTS AND PUBLICATIONS

INDEX OF AFFECTED CHARTS

DESCRIPTION	NOTICE NO.	PAGE NO.
Index of Singaporean Charts	-	109
Index of Dual Badged Charts	-	110
Index of Singapore Electronic Navigational Charts (ENC)	-	111
New Edition Dual Badged Charts	-	112
Singaporean Chart SP1/GSP1	*45, *46	113
Singaporean Chart 503	47	113
Temporary and Preliminary notices	*48T	114
Port Marine Notices	*49	116
Singaporean Print-On-Demand (POD) Charts	*50	116
Amendments to Publications	*51	117
Reprint of Radio Navigational Warnings	-	118
Reprint of Admiralty Notices to Mariners for Dual Badged Charts	-	119
Singapore Electronic Navigational Charts (ENC) Distributors	-	121
Agents for the Maritime and Port Authority of Singapore Nautical Charts and Publications	-	122

*Denotes information are based on Singaporean source.

I
INDEX OF CHARTS AND PUBLICATIONS

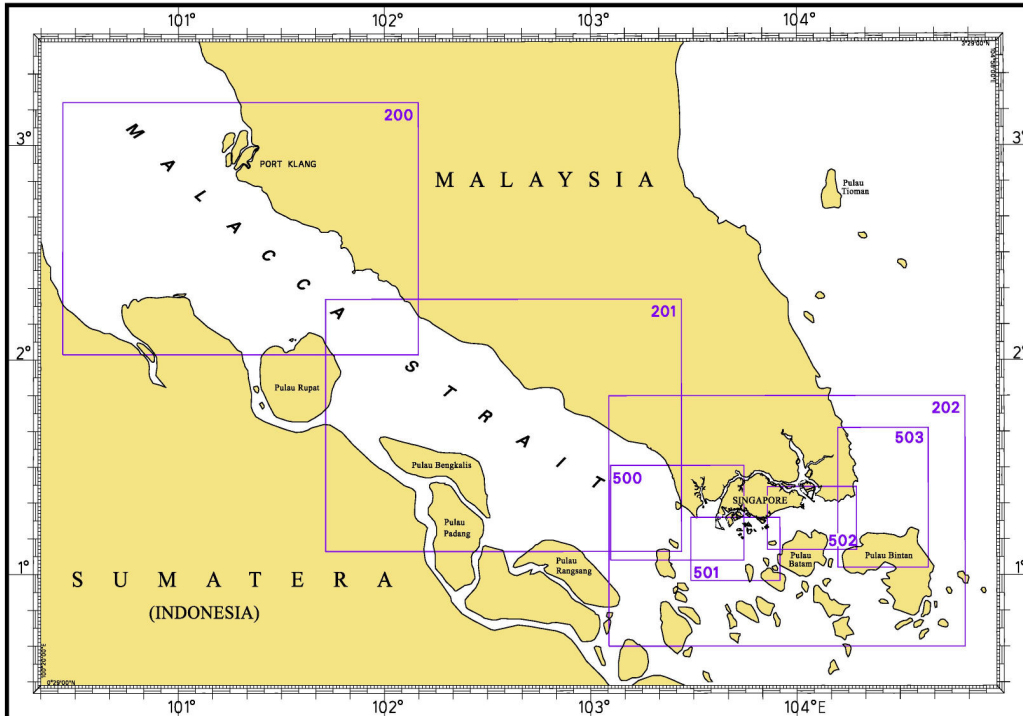
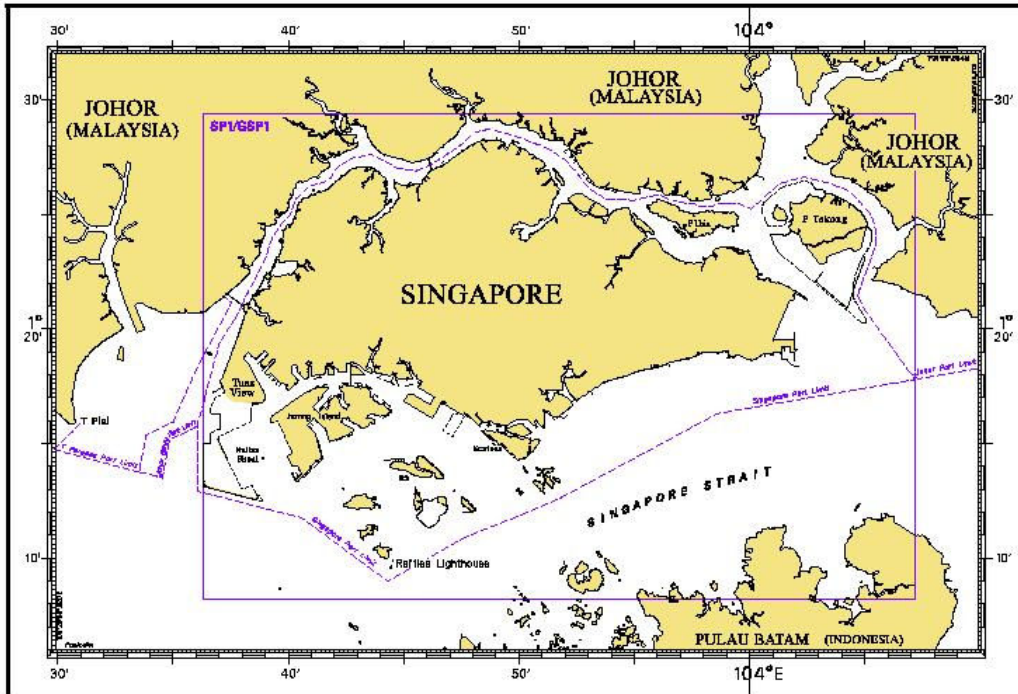
INDEX OF NOTICES

NOTICE NO.	DESCRIPTION	PAGE NO.	NOTICE NO.	DESCRIPTION	PAGE NO.
-	Index of Singaporean Charts	109			
-	Index of Dual Badged Charts	110			
-	Index of Singapore Electronic Navigational Charts (ENC)	111			
-	New Edition Dual Badged Charts	112			
*45, *46	SP1/GSP1	113			
47	503	113			
*48T	Temporary and Preliminary notices	114			
*49	Port Marine Notices	116			
*50	Singaporean Print-On-Demand (POD) Charts	116			
*51	Amendments to Publications	117			
-	Reprint of Radio Navigational Warnings	118			
-	Reprint of Admiralty Notices to Mariners for Dual Badged Charts	119			
-	Singapore Electronic Navigational Charts (ENC) Distributors	121			
-	Agents for the Maritime and Port Authority of Singapore Nautical Charts and Publications	122			

* Denotes information are based on Singaporean source.

I
INDEX OF CHARTS AND PUBLICATIONS

INDEX OF SINGAPOREAN CHARTS

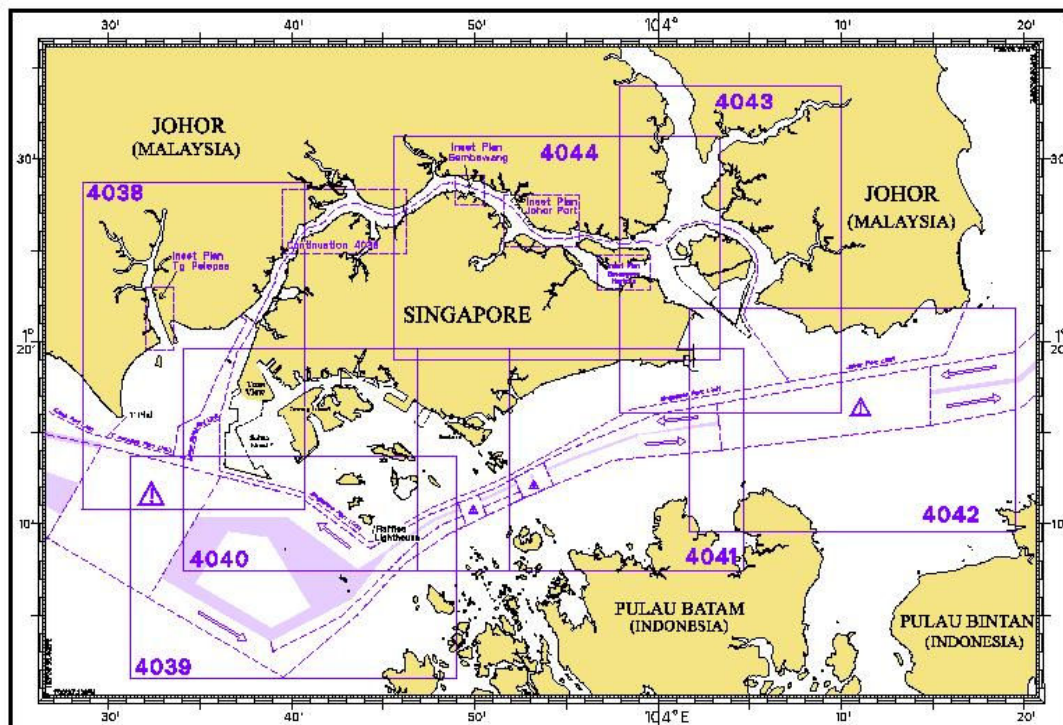
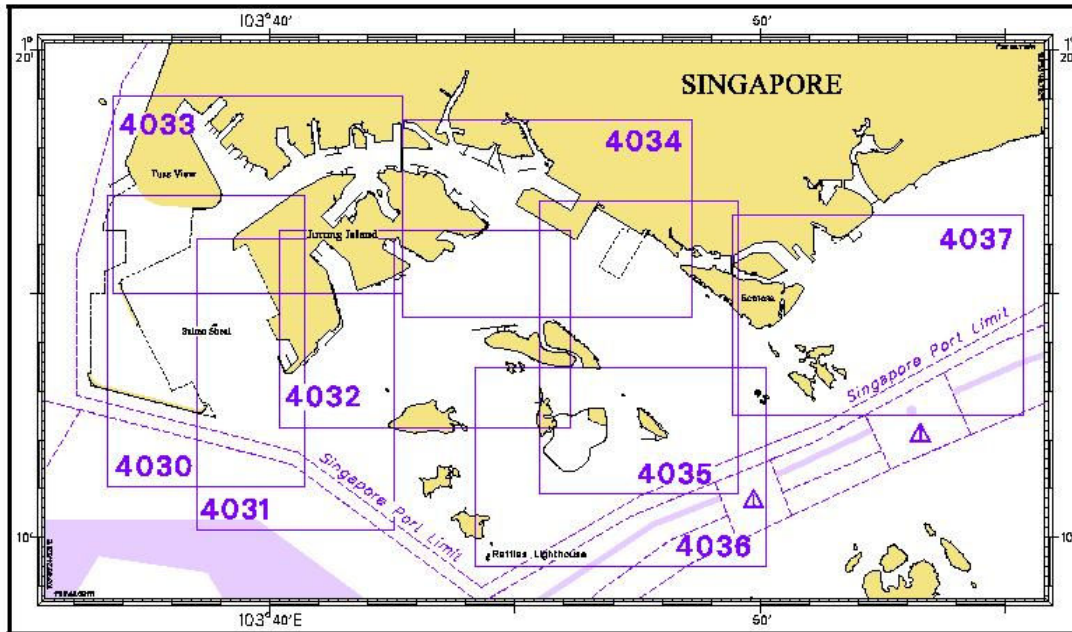


Notes:

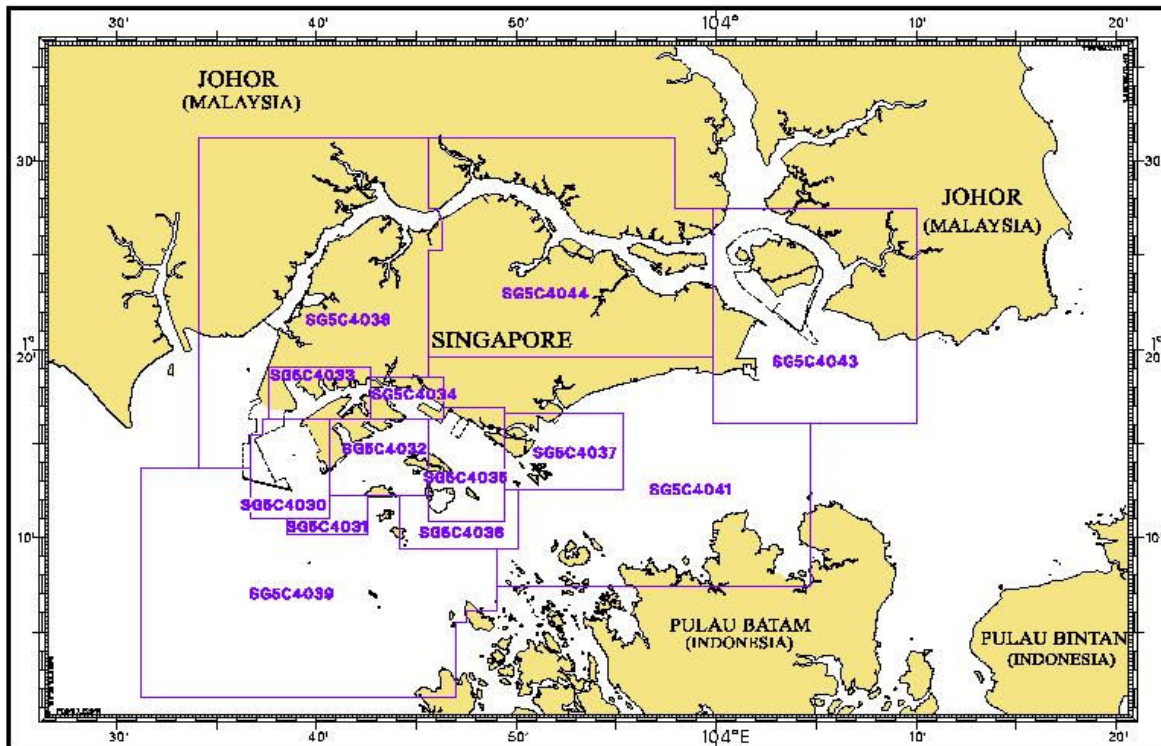
Updated SINGAPOREAN Charts are available through our Print-On-Demand (POD) Chart Service. For more information, refer to Section III – Navigational Information and these charts can be purchased from our authorised Chart Agents:
 DPM (Singapore) Pte Ltd, E.W. Limer Charts & Publications Pte Ltd and Motion Smith.

I
INDEX OF CHARTS AND PUBLICATIONS

INDEX OF DUAL BADGED CHARTS



I
INDEX OF CHARTS AND PUBLICATIONS
INDEX OF SINGAPORE ELECTRONIC NAVIGATIONAL CHARTS (ENC)



INDEX OF SINGAPORE ENC

ENC Name	ENC Title	Latitude	Longitude
SG5C4030	West Jurong Anchorages and Temasek Fairway	1°11-050'N 1°16-300'N	103°36-700'E 103°40-640'E
SG5C4031	Western Approaches to Jurong Island	1°10-150'N 1°12-250'N	103°38-500'E 103°42-530'E
SG5C4032	Sinki Fairway	1°12-250'N 1°16-300'N	103°40-640'E 103°45-580'E
SG5C4033	Tuas Bay, West Jurong Channel and Pesek Basin	1°16-300'N 1°19-050'N	103°37-600'E 103°42-700'E
SG5C4034	East Jurong Channel, Pasir Panjang Terminal and West Keppel Fairway	1°16-300'N 1°18-550'N	103°42-700'E 103°46-356'E
SG5C4035	Western Anchorages, Jong Fairway and Cruise Bay	1°10-900'N 1°16-900'N	103°45-580'E 103°49-425'E
SG5C4036	Raffles Lighthouse to The Sisters	1°09-400'N 1°12-520'N	103°44-200'E 103°50-130'E
SG5C4037	Keppel Harbour, Tanjong Pagar Terminal and Approaches	1°12-520'N 1°16-590'N	103°49-425'E 103°55-340'E
SG5C4038	Johor Strait – Western Part	1°13-700'N 1°31-200'N	103°34-100'E 103°46-300'E
SG5C4039	Western Approaches to Main Strait	1°01-500'N 1°13-700'N	103°31-200'E 103°49-000'E
SG5C4041	Pulau Sebarok to Changi	1°07-400'N 1°19-600'N	103°45-600'E 103°04-700'E
SG5C4043	Kuala Johor and Sungai Johor	1°16-100'N 1°27-500'N	103°59-800'E 104°10-000'E
SG5C4044	Johor Strait – Eastern Part	1°19-600'N 1°31-200'N	103°45-600'E 103°59-800'E

II NEW PUBLICATIONS

NEW EDITION DUAL BADGED CHARTS TO BE PUBLISHED ON 29TH July 2010






Chart Number	:	4043
Title	:	Malaysia and Singapore Kuala Johor and Sungai Johor
Coverage	:	Lat 01°16.10' N 01°34.00' N Long 103°57.90' E 104°10.00' E
Scale	:	1: 30 000
Date Published	:	29 th July 2010
Size of Chart	:	748.1 X 1099.6 mm
Remarks	:	This new edition includes updated surveys covering these areas: <ul style="list-style-type: none"> • Area around Pulau Tekong • Kuala Johor • Area East of Changi • Cafhi Jetty

The existing chart of the same number published on 23rd July 2009 is superseded.

Chart Number	:	4044
Title	:	Singapore and Malaysia Johor Strait, Eastern Part
Coverage	:	Lat 01° 19.00' N 01° 31.20' N Long 103° 45.60' E 104° 03.40' E
Scale	:	1: 30 000
Date Published	:	29 th July 2010
Size of Chart	:	1100.5 x 749.5 mm
Remarks	:	This new edition includes updated surveys covering these areas : <ul style="list-style-type: none"> • Dockyard Reach • Kuala Johor • Cafhi Jetty • East of Changi

The existing chart of the same number published on 23rd July 2009 is superseded.

II
NOTICES TO MARINERS AND CHART CORRECTIONS

SP1/GSP1	5Ed 21/01/10 Last NM 41/2010	(HD/HY/A00103010)	*NM 45/2010
Insert	 Obstn		1°17·82'N 103°54·98'E
		(HD/HE025/39/2010)	*NM 46/2010
Insert	 Q(6)+LFI.15s4m5M Second Bukom		1°14·17'N 103°46·45'E
		(HD/Job No. 53C/10)	
Delete	 Q(6)+LFI.15s		1°14·15'N 103°46·47'E
	 Obstn		1°14·18'N 103°46·44'E
<hr/>			
503	4Ed 21/01/10	(Admiralty Notices 31/4091/2008)	NM 47/2010
Substitute	 for ++		1°07·47'N 104°12·27'E
<hr/>			

II TEMPORARY AND PRELIMINARY NOTICES

***(NM 48T/2010) SOIL INVESTIGATION FROM THE SINGAPORE PORT LIMIT AND THE WEST BOUND LANE OF THE TRAFFIC SEPARATION SCHEME IN THE SINGAPORE STRAIT**

Purpose

Mariners navigating in the Singapore Strait are hereby informed that soil investigation operations will be carried out from the Singapore Port Limit and the westbound lane of the Traffic Separation Scheme.

Date

With effect from 1st July 2010 until 15th August 2010 (1.5 month).

Duration

Daily from 0700 hrs to 1900 hrs, seven days a week with effect from 1st July 2010.

Working Area

Within two areas, Area A and Area B, bounded by the following coordinates from Singapore Port Limit and the area within the westbound lane of the Traffic Separation Scheme (please see chart attached):

WGS 84 Datum		
Area "A" Points	Lat. (N)	Long. (E)
A1	1°13.899'	103°54.159'
A2	1°14.416'	103°55.118'
A3	1°13.652'	103°55.405'
A4	1°13.268'	103°54.397'

WGS 84 Datum		
Area "B" Points	Lat. (N)	Long. (E)
B1	1°14.897'	103°58.121'
B2	1°16.217'	104°01.630'
B3	1°16.097'	104°01.675'
B4	1°14.684'	103°58.200'

Vessels

Vessels involved in the operations will display the appropriate day and night signals and will stand by on VHF 12 and 14 and shall follow any traffic information given by the Vessel Traffic Service of Singapore (VTIS).

Navigational Broadcast

Navigational warning broadcast will be promulgated by (VTIS) on VHF CH 09 and NAVTEX to inform vessels of the soil investigation operation. Mariners are to maintain a listening watch for the above safety information.

Caution

Mariners are advised to:

- (a) Navigate with caution and proceed at safe speed when approaching the area; and
- (b) Keep well clear of the working vessels.

Charts affected: SP1/GSP1, 202, 501, 502, 4037 & 4041
Source: Surbana International Consultants Pte. Ltd.

III NAVIGATIONAL INFORMATION

*(NM 49/2010) PORT MARINE NOTICES

The following PMNs have been shortlisted, as they would be of particular interest to mariners.

These notices can be accessed directly from MPA website:

http://www.mpa.gov.sg/sites/port_and_shipping/circulars_and_notices/port_marine_notices.page

PMN No.	Subject
45/2010	Construction works at Loyang Offshore Base.
49/2010	Construction of Crane Dance structure in Cruise Bay.
50/2010	Reclamation of Jurong Island Phase 4.
54/2010	Reclamation work at Tuas View Extension.

*(NM 50/2010) SINGAPOREAN PRINT-ON-DEMAND (POD) CHARTS

Print-On-Demand (POD) Charts are the most up-to-date paper nautical charts printed for navigational use. These nautical charts are produced in accordance with the International Hydrographic Organisation (IHO) charting specifications. These official nautical charts are continually updated to the latest Notices to Mariners before they are printed and sold to users.

These POD Charts include SP1/GSP1, 200, 201, 202, 500, 501, 502 and 503.

BENEFITS TO OUR CUSTOMERS

Convenience

Customers need not make numerous hand corrections to the nautical charts before use. In addition the updated POD Charts are more accurate and reliable than offset printed charts with hand corrections.

Clarity

Clarity in the presentation of updated information as compared to lithographic printed charts, where in some cases there are several overlapping corrections over existing information.

Coverage

The POD Charts cover the Malacca and Singapore Straits, from One Fathom Bank to Horsburgh Lighthouse.

III
AMENDMENTS TO PUBLICATIONS

***(NM 51/2010) UPDATING OF PUBLICATION “SINGAPORE PORT INFORMATION 2010/2011”**

1. Page 150 – Item 22

Insert the following :

JURONG ISLAND (OILTANKING SINGAPORE LTD) (1°16.8'N, 103°44.1'E)

Berth	Depth Alongside (Year Surveyed)	
	Delete	Insert
MJ2	14.5m (2005)	14.5m (2010)
MJ5	12.8m (2008)	12.8m (2010)
MJ6	12.4m (2000)	12.3m(2010)
MJ9	15.7m (2005)	16.1m(2010)

Source: Berth List (HD/HY Code H00100510 and H00100610)

2. Page 158 – Item 41

Insert the following :

TANJONG PENJURU (VOPAK TERMINALS SINGAPORE PTE LTD)(1°17.8'N, 103°43.8'E)

Berth	Depth Alongside (Year Surveyed)	
	Delete	Insert
2	14.6m (1999)	14.0m (2010)
3	12.1m (2008)	12.1m (2010)

Source: Berth List (HD/HY Code H00100810)

3. Page 124

CHARACTERISTICS OF AIDS TO NAVIGATION - JONG FAIRWAY

Insert the following:

Name of Beacon/Buoy	Position Lat. N Long. E Deg Min	Structure Color & Shape	Light Characteristics	Owner
Second Bukom Beacon	01 14.172 103 46.452	Double black cones points downward, on black box on yellow pile, black band at bottom	Q(6)+LFl.15s4m5M	MPA

Delete the following:

Name of Beacon/Buoy	Position Lat. N Long. E Deg Min	Structure Color & Shape	Light Characteristics	Owner
Second Bukom Buoy	01 14.154 103 46.473	Double black cones points downward on yellow pillar buoy	Q(6)+LFl.15s	MPA

Source: HD/HE025/39/2010

IV
REPRINT OF RADIO NAVIGATIONAL WARNINGS

TT173

VESSELS IN EAST JOHOR STRAIT ARE ADVISED TO NAVIGATE WITH CAUTION WHEN NEAR THE PROJECT AREAS OFF PULAU TEKONG, PULAU SERANGOON, CHANGI AND MALANG PAPAN AS SHALLOW WATER AREAS EXIST. VESSELS ARE ADVISED TO KEEP LOOKOUT FOR TUGS AND BARGES NAVIGATING NEAR THE PROJECT AREAS AND PASSENGER FERRIES CROSSING BETWEEN CHANGI AND PULAU TEKONG AND VICINITY OF PASIR GUDANG.

TT619 (AMENDED ON 270430z)

DREDGER QUEEN OF PENTA OCEAN IS CONDUCTING DREDGING OPERATIONS IN POSITIONS BOUNDED BY COORDINATES:

01°15.827' N 103°57.737' E

01°14.865' N 103°58.134' E

01°13.298' N 103°54.401' E

01°13.884' N 103°54.131' E

VESSELS ARE ADVISED TO PROCEED AT SAFE SPEED AND TO GIVE A WIDE BERTH.

TT753

A SMALL WOODEN CARGO BOAT 10M IN LENGTH SUNK AT 01°15.73'N 103°32.1'E.

TT854

DANGER TO NAVIGATION

A VESSEL HAD SUNK IN POSITION 01°26.3'N 104°38.5'E. VESSELS ARE TO KEEP CLEAR.

TT865

SAFE WATER MARK BUOY LFL.10S AT POSN 01°02.95'N 103°38.99'E IS UNLIT.

TT866

BUFFALO ROCK NORTH CARDINAL MARK Q FL (W) IN POSITION 01° 09.41'N 103° 48.80'E IS REPORTED UNLIT.

TT870

CS 'ASEAN RESTORER' IS CARRYING OUT SUBMARINE CABLE REPAIRS OPERATIONS AT COORDINATES:

1. 01°18.43'N 104°14.08'E

2. 01°18.16'N 104°14.23'E

3. 01°17.86'N 104°14.39'E

4. 01°18.61'N 104°13.98'E

VESSELS ARE ADVISED TO KEEP A LOOKOUT AND GIVE A WIDE BERTH.

TT972

PERFORMANCE TRIALS BEING CONDUCTED ON SINGAPORE NEW DIFFERENTIAL GLOBAL POSITIONING NAVIGATION SYSTEM(DGNSS) REFERENCE STATION OPERATING AT 308 KHz ESTABLISHED AT HORSBURGH LIGHTHOUSE. MARINERS ARE ADVISED TO CONTINUE USING DGNSS FROM RAFFLES LIGHTHOUSE FOR NAVIGATION UNTIL FURTHER NOTICE.

SR154

THERE WAS A REPORT OF AN UNIDENTIFIED VESSEL SUNK SOUTHWEST OF HORSBURGH AT POSN 01°16.12'N 104°21.5'E. VESSELS IN THE VICINITY ARE ADVISED TO KEEP A LOOKOUT AND REPORT SIGHTING TO SPOCC.

ISSUED BY SINGAPORE PORT OPERATIONS CONTROL CENTRE
(as at 23rd May 2010)

V
REPRINT OF ADMIRALTY NOTICES TO MARINERS
FOR DUAL BADGED CHARTS

These notices can be accessed directly from UKHO Website:

<http://www.ukho.gov.uk/ProductsandServices/MaritimeSafety/Pages/NMPublic.aspx>

2228* SINGAPORE – Jurong Island – Ayer Merbau Basin Eastwards and Southwards, Pesek Basin, Marina South and Eastern Petroleum A Anchorage – Obstructions. Wrecks. Dredged depths. Reclamation area. Works. Buoyage. Depths. Dredged areas.

Source: Maritime and Port Authority of Singapore

Chart 4032 [*previous update New Edition 04/03/2010*] WGS84 DATUM

Amend	dredged depth to, 14.8m (2010) , centred on:	1° 16' 287N., 103° 44' 412E.
	dredged depth to, 13.9m (2010) , centred on:	1° 16' 225N., 103° 44' 344E.
	dredged depth to, 15.7m (2010) , centred on:	1° 16' 149N., 103° 44' 214E.
	dredged depth to, 15.2m (2010) , centred on:	1° 16' 106N., 103° 44' 116E.

Delete	 <i>Obstn</i>	1° 15' 780N., 103° 43' 517E.
--------	--	------------------------------

Chart 4033 [*previous update New Edition 04/03/2010*] WGS84 DATUM

Amend	dredged depth to, 15.2m (2010) , centred on:	1° 16' 640N., 103° 41' 440E.
-------	---	------------------------------

Chart 4037 [*previous update 1634/10*] WGS84 DATUM

Insert	the accompanying block, showing new reclamation area and amendments to works, buoyage, obstructions, depths and dredged areas, centred on:	1° 16' 010N., 103° 51' 630E.
--------	--	------------------------------

Delete	 <i>Obstn</i>	1° 15' 952N., 103° 54' 817E.
--------	--	------------------------------

	 <i>Wk</i>	1° 15' 838N., 103° 54' 706E.
--	---	------------------------------

	 <i>Wk</i>	1° 15' 502N., 103° 54' 753E.
--	---	------------------------------

Chart 4040 [*previous update 1634/10*] WGS84 DATUM

Delete	 <i>Obstn</i>	1° 15' 78N., 103° 43' 52E.
--------	--	----------------------------

Chart 4041 [*previous update 1634/10*] WGS84 DATUM

Delete	 <i>Obstn</i>	1° 15' 95N., 103° 54' 82E.
--------	--	----------------------------

	 <i>Wk</i>	1° 15' 84N., 103° 54' 71E.
--	---	----------------------------

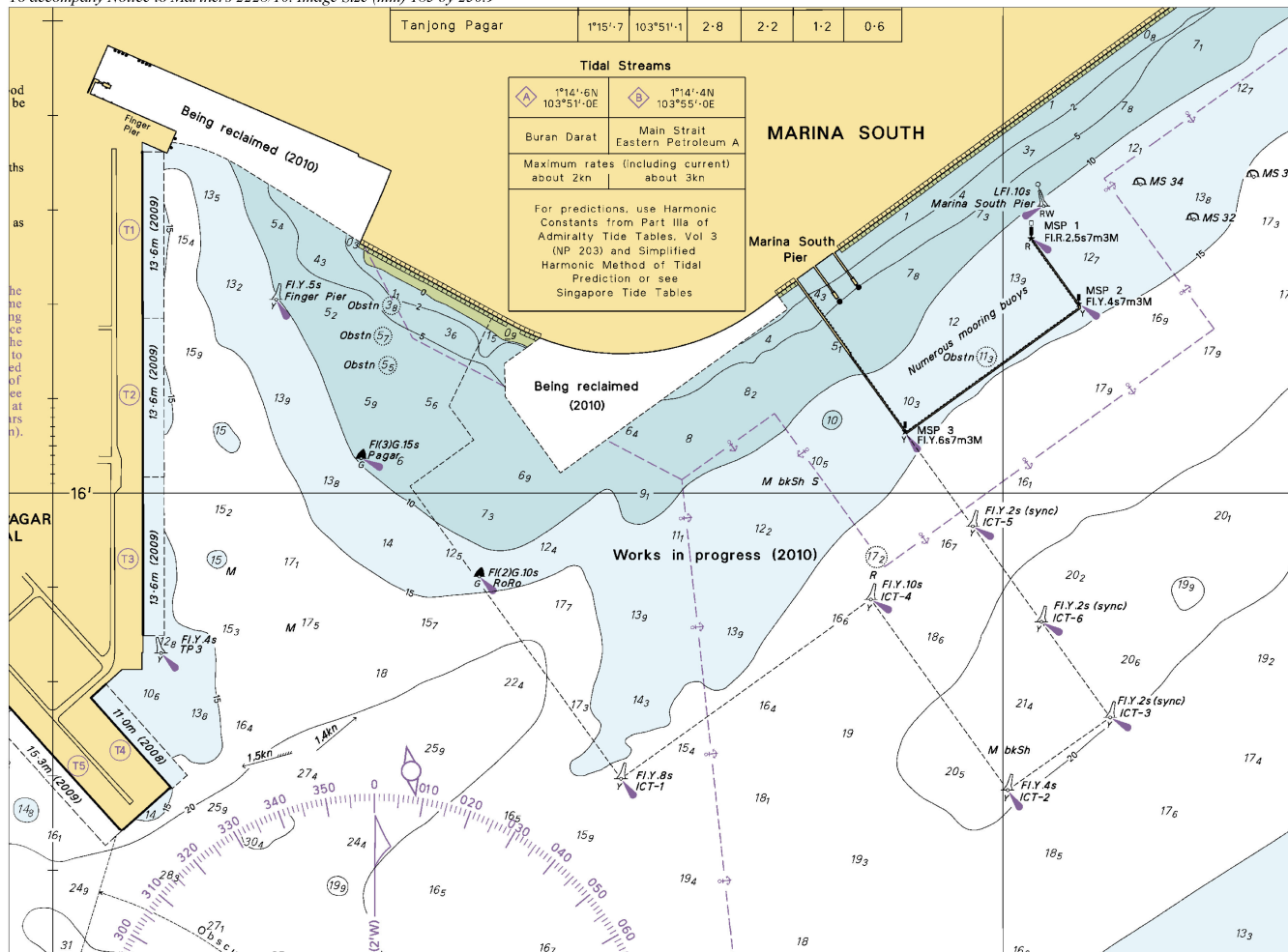
	 <i>Wk</i>	1° 15' 50N., 103° 54' 75E.
--	---	----------------------------

Updated to Admiralty Notices to Mariners Edition No. 21 of 2010 dated 27th May 2010.

V

REPRINT OF ADMIRALTY NOTICES TO MARINERS FOR DUAL BADGED CHARTS

To accompany Notice to Mariners 2228/10. Image Size (mm) 185 by 250.9



SINGAPORE ELECTRONIC NAVIGATIONAL CHARTS (ENC) DISTRIBUTORS
Please approach any of the appointed distributors to purchase the Singapore ENC.

DISTRIBUTOR	ADDRESS	TELEPHONE/FAX NO./EMAIL/WEBSITE
DPM (Singapore) Pte Ltd	1 Maritime Square, #09-72 HarbourFront Centre, Singapore 099253	Tel. No.: +65 6270 4060 Fax No.: +65 6276 3858 Email: sales@dpsingapore.com.sg Website: http://www.dpsingapore.com.sg
Kelvin Hughes(S) Pte Ltd	8 Pandan Avenue #02-00, Singapore 609384	Tel. No.: +65 6545 9880 ext.24 Fax No.: +65 6545 8892 Email: hamzah.akhbar@khsing.com Website: http://www.kelvinhughes.co.uk
Maritime Information Systems (MARIS)	52, Telok Blangah Road #01-06, Telok Blangah Centre, Singapore 058809	Tel. No.: +65 6276 1472 Fax No.: +65 6276 1473 Email: support@maris.sg Website: http://www.maris.no
Maritime Information System AS (MARIS)	Danholmen 25, 3128 Notteroy, Norway	Tel. No.: +47 33 30 42 50 Fax No.: +47 33 30 42 51 Email: roar.moe@maris.no Website: http://www.maris.no
Motion Smith	15 Jalan Kilang Barat #08-01/05 Frontech Centre Singapore 159357	Tel. No.: +65 6220 5098 Fax No.: +65 6225 4902 Email: sales@motsmith.com Website: http://www.motsmith.com
Transas Marine Pacific Pte Ltd	Cyber Centre 16 & 18 Jalan Kilang Barat Singapore 159358	Tel. No.: +65 6271 0200 Fax No.: +65 6271 7300 Email: dominic@transas.com.sg Website: http://www.transas.com.sg
Vector Services Pte Ltd	15 West Coast Highway, #02-14A Pasir Panjang Building Singapore 117861	Tel. No.: +65 6777 3602 Fax No.: +65 6777 9203 Email: kwchoy@pacific.net.sg
Marine Press of Canada	640 Rue St-Paul Ouest, Suite 300 Montreal (QC) Canada, H3C1L9	Tel. No.: (514) 866 8342 Fax No.: (514) 866 9050 Email : sales@marinepress.com Website: http://www.marinepress.com
HanseNautic GmbH Bade & Hornig, Eckardt & Messtorff	Herrengaben 31 D-20459 Hamburg, Germany	Tel. No.: +49 40 374 811-32 Fax No.: +49 40 366 400 Email: wilde@hansenautic.de Website : http://www.HanseNautic.com
ChartWorld GmbH	Ruhrstrasse 90, D-22761 Hamburg, Germany	Tel. No.: +49 40 853 58 6940 Fax No.: +49 40 853 58 6949 Email: sales@chartworld.com Website : http://www.sevencs.com
Japan Hydrographic Association Electronic Charts Division	Daiichi Sogo Bldg, 6F 1-6-6, Hanedakuko, Ota-ku, Tokyo 144-0041, Japan	Tel. No.: +81 3 5708 7093 Fax No.: +81 3 5708 7094 Email: enc-support@jha.jp Website: http://www.jha.jp

SINGAPORE ELECTRONIC NAVIGATIONAL CHARTS (ENC) DISTRIBUTORS
Please approach any of the appointed distributors to purchase the Singapore ENC.

DISTRIBUTOR	ADDRESS	TELEPHONE/FAX NO./EMAIL/WEBSITE
E_MLX Co. Ltd	Ssangyong Research No.2 Lab Sinseong-Dong 100 Yusong-Gu, Daejoen 305-804, Korea (ROK)	Tel. No.: +82 42 865 1893 Fax No.: +82 42 865 1884 Email: Jester-kim@emlx.co.kr
Korean Ocean Development Co. Ltd	2ND Fl, Dongbang Bldg, 25-4, 4 Ga Jungang-Dong, Jung-Gu, Busan, South Korea	Tel. No.: +82 514 66 0760 Fax No.: +82 514 65 9345 Email: sales@chartkorea.com Website: http://www.chartkorea.com
Jeppesen Norway A/S	P.O Box 212 , N-4379 Egersund, Norway	Tel No.: +47 514 64 700 Fax No: +47 514 64 701 Email: enc@c-map.no Website : http://www.c-map.no
PRIMAR STAVANGER	Lervigsveien 36, P.O Box 60, N-4001 Stavanger, Norway	Tel. No.: +47 51 93 9500 Fax No.: +47 51 93 9501 Email: sales@primar.org Website : http://www.primar-stavanger.org
United Kingdom Hydrographic Office	Admiralty Way, Taunton, Somerset TA1 2DN United Kingdom	Tel. No.: +44 (0)1823 337900 Fax No.: +44 (0)1823 284077 Emails: vargroup@ukho.gov.uk & christine.trickett@ukho.gov.uk Website: http://www.ukho.gov.uk

**Agents for the Maritime and Port Authority of Singapore
Nautical Charts and Publications**

Agent's Name : **DPM (Singapore) Pte Ltd**
Address : 1 Maritime Square #09-72, HarbourFront Centre,
Singapore 099253
Telephone : (65) 6270 4060
Fax No. : (65) 6276 3858
E-mail : sales@dpmsingapore.com.sg
Internet Web Site : http://www.dpmsingapore.com.sg

Agent's Name : **E.W. Liner Charts & Publications Pte Ltd**
Address : 102F, Pasir Panjang Road, #08-01, Citilink Warehouse Complex,
Singapore 118530
Telephone : (65) 6323 0773
Fax No. : (65) 6323 0775
E-mail : ewliner@singnet.com.sg
Internet Web Site : http://www.ewliner.com

Agent's Name : **Motion Smith**
Address : 15 Jalan Kilang Barat
#08-01/05 Frontech Centre,
Singapore 159357
Telephone : (65) 6220 5098
: (After office hours: 8163 9993)
Fax No. : (65) 6225 4902
E-mail : sales@motsmith.com
Internet Web Site : http://www.motsmith.com

HYDROGRAPHIC NOTE - Instructions

1. Mariners are requested to notify the Chief Hydrographer, Maritime and Port Authority of Singapore, when new or suspected dangers to navigation are discovered, changes are observed in aids to navigation or where corrections to nautical publications may be necessary. Reports, which cannot be confirmed or are lacking in certain details should not be withheld.
2. Any ambiguities of time, positioning and depth should be stressed and any firm expectation of being able to check the information provided on a following voyage should be mentioned.
3. Mariners using satellite position fixing systems, eg. GPS, should provide details of equipment and datum used (where applicable). Where bearings (true or magnetic) are taken visually or by radar to fix a position, it should include more than two objects in order to provide a check on its accuracy. A position may also be defined by bearing and distance from a conspicuous object eg. beacon, lighthouse etc.
4. The note should include a tracing or a digital image of the chart used and the details should be clearly marked.
5. Echo sounders frequently register greater depths than the advertised maximum depth for the equipment, eg. a trace appearing at 50 metres may be in fact be 550 metres or even 1050 metres for equipment whose maximum depth is 500 metres. Erroneous depths caused by 2nd transmission error can usually be recognised by the following:
 - (a) the tracing being weaker than normal for the depth registered,
 - (b) the trace appearing to pass through the transmission line,
 - (c) the feathery nature of the trace.
6. Upon receipt of a hydrographic note, a Notice to Mariners may be issued. The sender's vessel or name is quoted as the source unless the same information is also received in foreign Notices to Mariners.
7. Reports of shoals, uncharted dangers and defects in aids to navigation may also be made to the appropriate Singapore Port Operations Control Centre on VHF Channels 10, 12, 14, 68 or 73.

HYDROGRAPHIC NOTE

To:

Chief Hydrographer
Hydrographic Department
Maritime and Port Authority of Singapore
460 Alexandra Road PSA Building #20-00
Singapore 119963

Tel : (65) 6375 1227
Fax : (65) 6278 7646
Email : hydrographic@mpa.gov.sg

Sender's Contact Details :

Date :

Name of Vessel :

Address of Sender :

Tel : Fax :

Email :

Nature of Observation :

General Location :

Subject :

Position : Lat. Long.

Charts Used :

Date & Time of Observation :

Details :

.....

.....

Attachment :

Equipment Used :

Type of Position Fixing : GPS / DGPS Others :

Type of Echo Sounder :

Name and Signature :

Ship's/Company's stamp :