



SINGAPOREAN NOTICES TO MARINERS

SECTION	CONTENT	Page
I	Index of Charts & Publications	95
II	New Publications	100
	Notices to Mariners and Chart Corrections	102
	Temporary and Preliminary Notices	104
III	Navigational Information	105
	Amendments to Publications	107
IV	Reprint of Radio Navigational Warnings	108
V	Reprint of Admiralty Notices to Mariners for Dual Badged Charts	109

The monthly Notices to Mariners contain corrective information affecting charts published by the Hydrographic Department, Maritime and Port Authority of Singapore. The information contained in these Notices should be updated on the charts affected. Notices under Section II apply only to the particular Singaporean Chart(s) indicated.

Mariners are requested to notify the Chief Hydrographer, Maritime and Port Authority of Singapore, immediately on the discovery of new dangers or suspected dangers to navigation and of changes or defects in aids to navigation. See Hydrographic Note on back page.

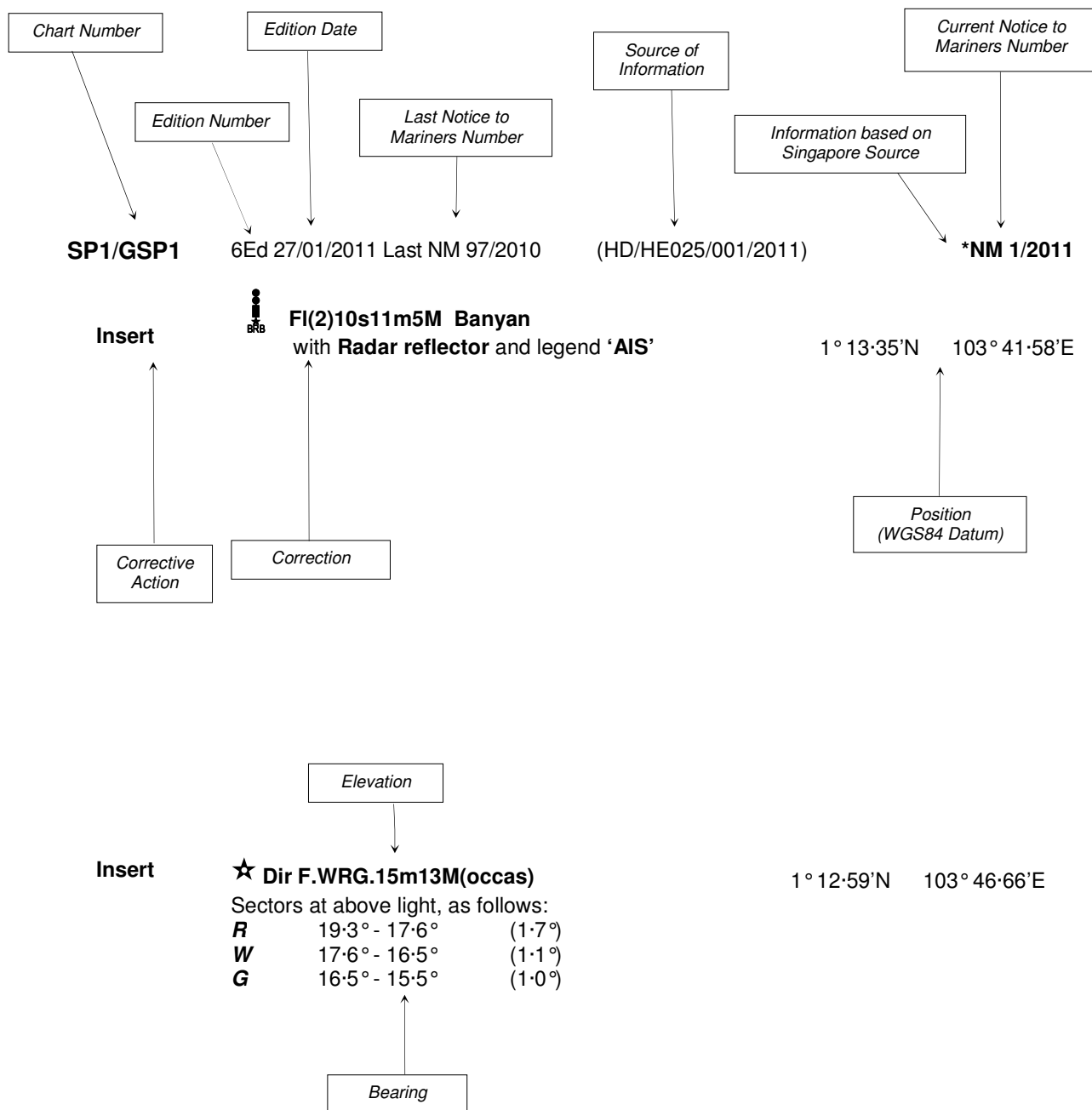
The monthly Singaporean Notices to Mariners can be accessed directly from the MPA website:
[http://www.mpa.gov.sg/sites/port_and_shipping/circulars_and_notices/singapore_notices_to_mariners\(ntm\).page](http://www.mpa.gov.sg/sites/port_and_shipping/circulars_and_notices/singapore_notices_to_mariners(ntm).page)

This service is offered free of charge.

Hydrographic Department
Maritime and Port Authority of Singapore
460 Alexandra Road
PSA Building #20-00
Singapore 119963
Tel: (65) 6375 1227
Fax: (65) 6278 7646

EXPLANATION OF FORMAT

The elements of a typical chart correction are explained below.



Notes:

- a) Notice to Mariners number followed by:
 - T** indicates a Temporary Notice (eg. ***NM 2T/2011**).
 - P** indicates a Preliminary Notice (eg. ***NM 3P/2011**).
- b) Bearings are true reckoned clockwise from 000° to 359°; those relating to lights are from seaward.
- c) Heights and elevations are above Mean High Water Springs.

I
INDEX OF CHARTS AND PUBLICATIONS

INDEX OF AFFECTED CHARTS

DESCRIPTION	NOTICE NO.	PAGE NO.
Index of Singaporean Charts	-	97
Index of Dual Badged Charts	-	98
Index of Singapore Electronic Navigational Chart (ENC)	-	99
New Edition Dual Badged Charts	-	100, 101
Singaporean Chart SP1/GSP1	*44, *45, 46	102
Singaporean Chart 202	47, 48, 49, 50	102
Singaporean Chart 502	46	102
Singaporean Chart 503	51	103
Temporary and Preliminary Notices	52T	104
Port Marine Notices	*53	105
Salvage Operation – Singapore Strait	*54	105
Singaporean Print-On-Demand (POD) Charts	*55	106
Amendments to Publications	*56	107
Reprint of Radio Navigational Warnings	-	108
Reprint of Admiralty Notices to Mariners for Dual Badged Charts	-	109
Singapore Electronic Navigational Chart (ENC) Distributors	-	110
Chart Agents for the Maritime and Port Authority of Singapore Nautical Charts and Publications	-	110

*Denotes information are based on Singaporean source.

I
INDEX OF CHARTS AND PUBLICATIONS

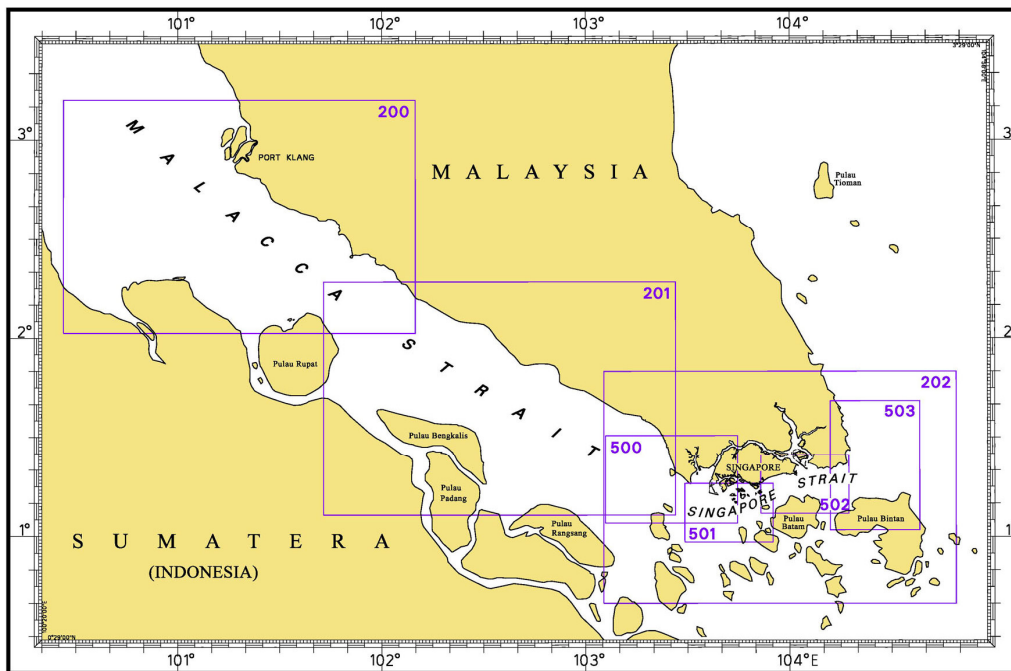
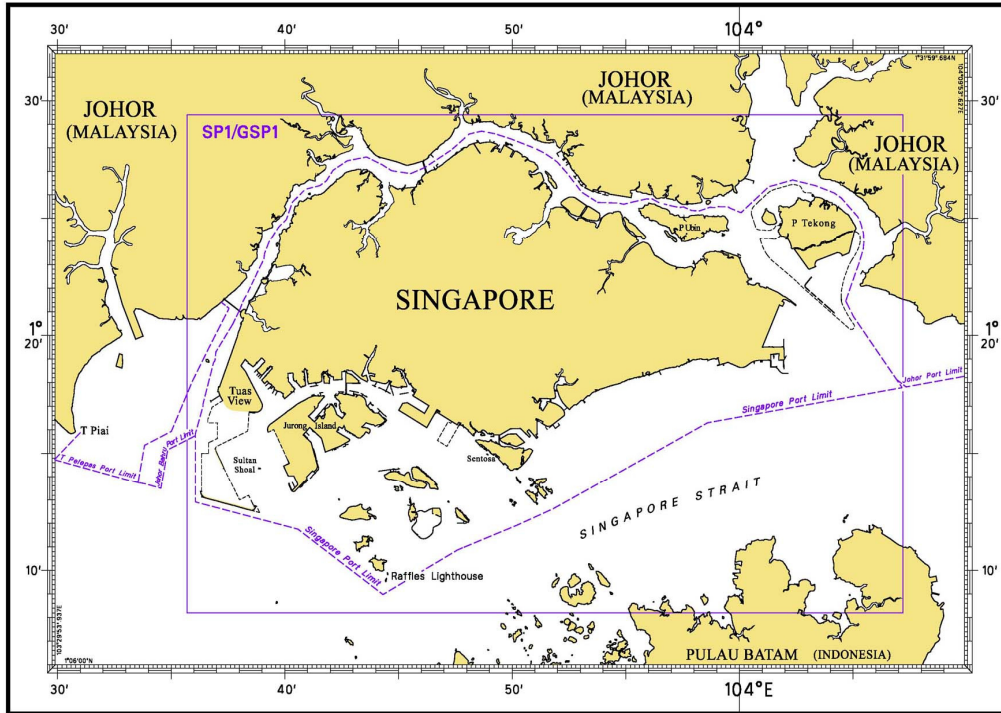
INDEX OF NOTICES

NOTICE NO.	DESCRIPTION	PAGE NO.
-	Index of Singaporean Charts	97
-	Index of Dual Badged Charts	98
-	Index of Singapore Electronic Navigational Chart (ENC)	99
-	New Edition Dual Badged Charts	100, 101
*44, *45	Singaporean Chart SP1/GSP1	102
46	Singaporean Chart SP1/GSP1, 502	102
47, 48, 49, 50	Singaporean Chart 202	102
51	Singaporean Chart 503	103
52T	Temporary and Preliminary Notices	104
*53	Port Marine Notices	105
*54	Salvage Operation – Singapore Strait	105
*55	Singaporean Print-On-Demand (POD) Charts	106
*56	Amendments to Publications	107
-	Reprint of Radio Navigational Warnings	108
-	Reprint of Admiralty Notices to Mariners for Dual Badged Charts	109
-	Singapore Electronic Navigational (ENC) Distributors	110
-	Chart Agents for the Maritime and Port Authority of Singapore Nautical Charts and Publications	110

* Denotes information are based on Singaporean source.

I INDEX OF CHARTS AND PUBLICATIONS

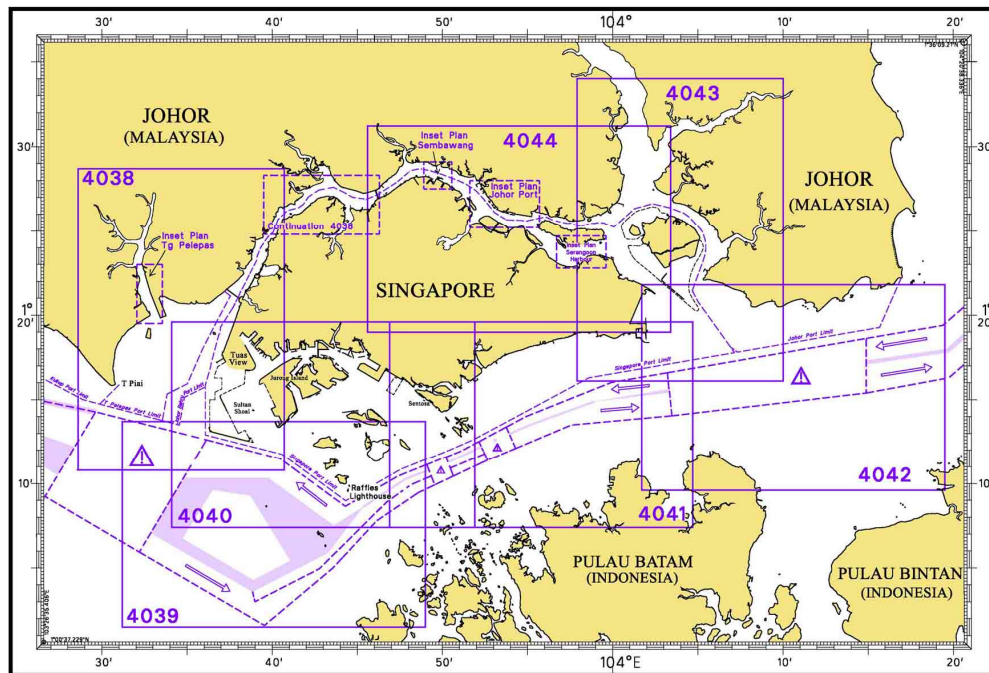
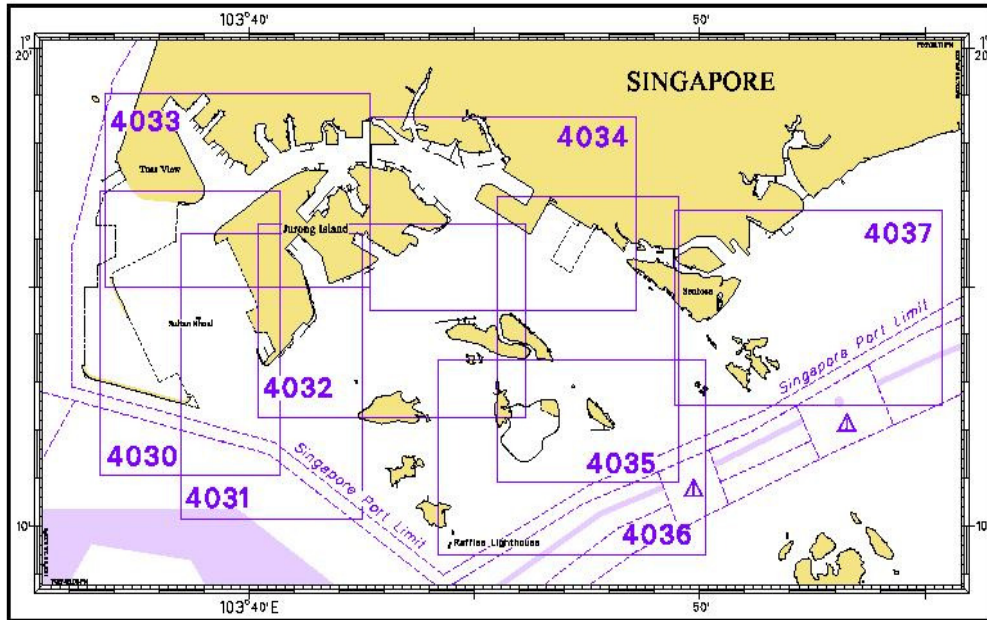
INDEX OF SINGAPOREAN CHARTS



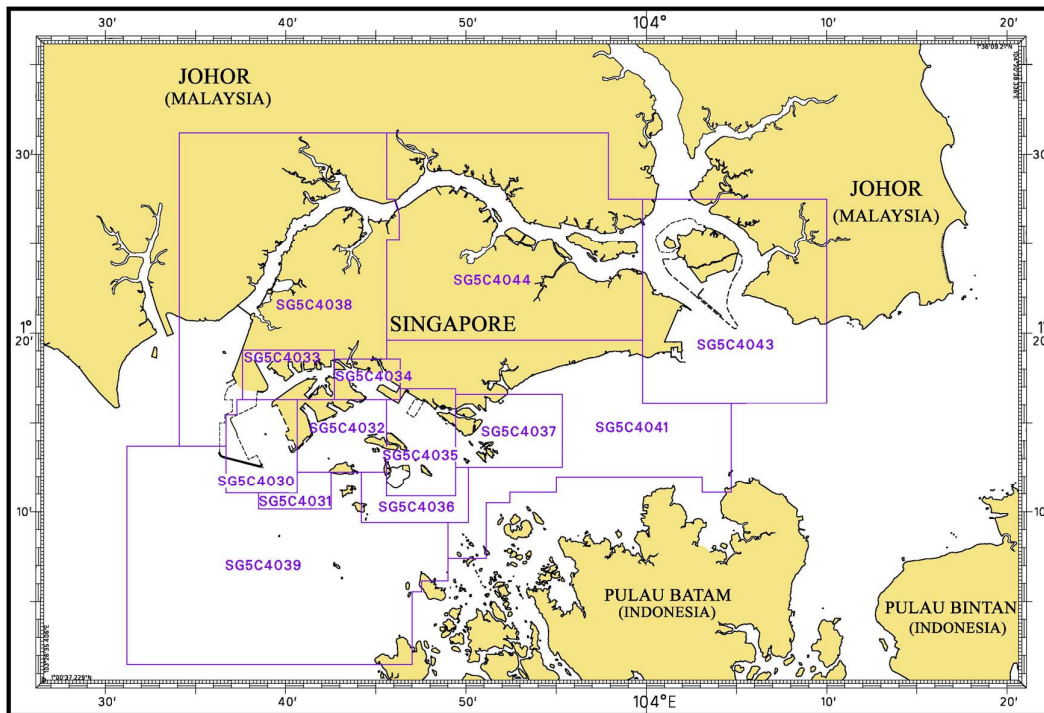
Notes:
 Updated SINGAPOREAN Charts are available through our Print-On-Demand (POD) Chart Service. For more information, refer to Section III – Navigational Information and these charts can be purchased from our authorised Chart Agents:
 DPM (Singapore) Pte Ltd, E.W. Liner Charts & Publications Pte Ltd and Motion Smith.

I
INDEX OF CHARTS AND PUBLICATIONS

INDEX OF DUAL BADGED CHARTS



I
INDEX OF CHARTS AND PUBLICATIONS
INDEX OF SINGAPORE ELECTRONIC NAVIGATIONAL CHART (ENC)



INDEX OF SINGAPORE ENC

ENC Name	ENC Title	Latitude	Longitude
SG5C4030	West Jurong Anchorages and Temasek Fairway	1° 11-050'N 1° 16-300'N	103° 36-700'E 103° 40-640'E
SG5C4031	Western Approaches to Jurong Island	1° 10-150'N 1° 12-250'N	103° 38-500'E 103° 42-530'E
SG5C4032	Sinki Fairway	1° 12-250'N 1° 16-300'N	103° 40-640'E 103° 45-580'E
SG5C4033	Tuas Bay, West Jurong Channel and Pesek Basin	1° 16-300'N 1° 19-050'N	103° 37-600'E 103° 42-700'E
SG5C4034	East Jurong Channel, Pasir Panjang Terminal and West Keppel Fairway	1° 16-300'N 1° 18-550'N	103° 42-700'E 103° 46-356'E
SG5C4035	Western Anchorages, Jong Fairway and Cruise Bay	1° 10-900'N 1° 16-900'N	103° 45-580'E 103° 49-425'E
SG5C4036	Raffles Lighthouse to The Sisters	1° 09-400'N 1° 12-520'N	103° 44-200'E 103° 50-130'E
SG5C4037	Keppel Harbour, Tanjong Pagar Terminal and Approaches	1° 12-520'N 1° 16-590'N	103° 49-425'E 103° 55-340'E
SG5C4038	Johor Strait – Western Part	1° 13-700'N 1° 31-200'N	103° 34-100'E 103° 46-300'E
SG5C4039	Western Approaches to Main Strait	1° 01-500'N 1° 13-700'N	103° 31-200'E 103° 49-000'E
SG5C4041	Pulau Sebarok to Changi	1° 07-400'N 1° 19-600'N	103° 45-600'E 104° 04-700'E
SG5C4043	Kuala Johor and Sungai Johor	1° 16-100'N 1° 27-500'N	103° 59-800'E 104° 10-000'E
SG5C4044	Johor Strait – Eastern Part	1° 19-600'N 1° 31-200'N	103° 45-600'E 103° 59-800'E

II NEW PUBLICATIONS

NEW EDITION DUAL BADGED CHARTS TO BE PUBLISHED ON 28TH JULY 2011

Chart Number	:	4042
Title	:	Indonesia, Malaysia and Singapore Changi To Pulau Mungging and Tanjung Buntan To Tanjung Tondang
Coverage	:	Lat 01°09'55"N 01°21'75"N Long 104°01'70"E 104°19'50"E
Scale	:	1: 30 000
Date Published	:	28 th July 2011
Size of Chart	:	1100.6 X 749.5 mm
Remarks	:	This new edition includes updated surveys covering these areas : <ul style="list-style-type: none"> • Eastern Bunkering 'A' Anchorage • Cable Corridor Area • Area South of Pulau Tekong • Johor Shoal

The existing chart of the same number published on
17th February 2011 will be superseded.

Chart Number	:	4043
Title	:	Malaysia and Singapore Kuala Johor and Sungai Johor
Coverage	:	Lat 01°16.10'N 01°34.00'N Long 103°57.9'E 104°10.00'E
Scale	:	1: 30 000
Date Published	:	28 th July 2011
Size of Chart	:	748.1 X 1099.6 mm
Remarks	:	This new edition includes updated surveys covering these areas : <ul style="list-style-type: none"> • Area around Pulau Tekong • Kuala Johor • Changi Creek • Eastern Anchorages • Eastern Fairway

The existing chart of the same number published on
29th July 2010 will be superseded.

II NEW PUBLICATIONS












NEW EDITION DUAL BADGED CHARTS TO BE PUBLISHED ON 28TH JULY 2011

Chart Number	:	4044
Title	:	Singapore and Malaysia Johor Strait, Eastern Part
Coverage	:	Lat 01°19'00'N 01°31'20'N Long 103°45.60'E 104°03.40'E
Scale	:	1: 30 000
Date Published	:	28 th July 2011
Size of Chart	:	1100.5 X 749.5 mm
Remarks	:	This new edition includes updated surveys covering these areas :

- Sembawang Basin
- Kuala Johor
- Changi Creek
- East of Loyang Jetty
- Sembawang Camp

The existing chart of the same number published on 29th July 2010 will be superseded.

II NOTICES TO MARINERS AND CHART CORRECTIONS

SP1/GSP1	6 Ed 27/1/11 Last NM 39/2011	(HD/HE025/15/2011)	*NM 44/2011
Insert	 TSS 5		1°15'74"N 103°45'06"E
Delete	 Fl.Y.10s TSS 5		1°15'63"N 103°45'41"E
		(HD/HE025/16/2011)	*NM 45/2011
Insert	 Fl.Y.4s Sembawang		1°28'22"N 103°49'43"E
		(Admiralty Notice 21/2175/2011)	NM 46/2011
Insert	 Fl.R.4s No. 2		1°10'03"N 103°59'36"E
	 Fl.R.4s No. 4		1°10'00"N 103°59'59"E
Delete	former No. 2 light-buoy at		1°10'07"N 103°59'43"E
<hr/>			
202	6 Ed 24/9/09 Last NM 39/2011	(Indonesian NM 13/117/2011)	NM 47/2011
Insert	 Fl(3)10s		0°51'80"N 104°18'20"E
Delete	 Q(3)10s		0°52'05"N 104°18'39"E
		(Indonesian NM 12/110/2011)	NM 48/2011
Insert			1°09'90"N 104°42'60"E
		(Indonesian NM 15/135/2011)	NM 49/2011
Insert	depth 2₄		1°11'98"N 104°21'63"E
Delete	depth 4₁		1°12'15"N 104°21'69"E
		(Indonesian NM 13/118/2011)	NM 50/2011
Move	 Fl.G.3s No. 5 from to		0°48'54"N 104°32'48"E 0°48'62"N 104°32'33"E
<hr/>			
502	4 Ed 25/9/08 Last NM 23/2011	(Admiralty Notice 21/2175/2011)	NM 46/2011
Insert	 Fl.R.4s No. 2		1°10'03"N 103°59'36"E
	 Fl.R.4s No. 4		1°10'00"N 103°59'59"E
Delete	former No. 2 light-buoy at		1°10'07"N 103°59'43"E

II
NOTICES TO MARINERS AND CHART CORRECTIONS

503	4 Ed 1/4/10 Last NM 17/2011	(Indonesian NM 15/135/2011)	NM 51/2011
Insert	depth <i>1₁</i>	1°12·39'N	104°20·69'E
	depth <i>3₄</i>	1°12·73'N	104°21·44'E
	depth <i>6</i>	1°12·78'N	104°24·64'E
	depth <i>2₄</i>	1°11·98'N	104°21·63'E
Delete	depth <i>4₅</i>	1°11·94'N	104°21·58'E

II
TEMPORARY AND PRELIMINARY NOTICES

(NM 52T/2011) LIGHT RANGE TEMPORARILY REDUCED AT TANJUNG PIAI LIGHT BEACON

Mariners are advised that the light range at Tanjung Piai Light Beacon has been temporarily reduced to 5 nautical miles. The details are as follows:

1. Position : Lat 1°15'52"N Long 103°30'57'E
2. Light Characteristics : Fl.W.3s16m5M

Remarks : Mariners are advised to navigate with caution when in the vicinity.

Charts affected: 500, 501, 202 and 4038

Source : Marine Department Peninsular Malaysia Notice to Mariners No. 28(T)/2011.

III NAVIGATIONAL INFORMATION

***(NM 53/2011) PORT MARINE NOTICES**

The following PMNs have been shortlisted, as they would be of particular interest to mariners.

These notices can be accessed directly from MPA website:

http://www.mpa.gov.sg/sites/port_and_shipping/circulars_and_notices/port_marine_notices.page

PMN No.	Subject
51/2011	Marine construction works off Marina Barrage.
52/2011	Reclamation of Jurong Island Phase 4.
54/2011	Construction of sea water intake structure off Jurong Island.
55/2011	Dredging works at East Keppel Fairway.
57/2011	Construction of 15,000 DWT Coal/Biomass Handling jetty on Jurong Island.
58/2011	Construction of Storage Terminal/Jetty on Jurong Island.
59/2011	Dredging works off Pasir Panjang Terminal.
60/2011	Construction of Lighter Wharf and ancillary facilities at Marina South.
63/2011	Reclamation at Pulau Tekong.
64/2011	Dredging works off Pasir Panjang Terminal and Cyrene Reefs.
66/2011	Coastal protection and restoration of mangrove off Sungei Buloh Wetland Reserve.
67/2011	Construction of sea wall at Marina South.

***(NM 54/2011) SALVAGE OPERATION – SINGAPORE STRAIT**

Remark : Salvage operation for the removal of wreck "Hyundai 105"
This is a revision of Singapore Notice to Mariners No. 8/71/2010. The working period has been extended.

Date : With effect from 2nd July 2010 to 31st January 2012.

Duration: 24 hours a day, seven days a week with effect from 2nd July 2010.

1. Salvage operation for the wreck removal at 1°13.4'N 103°57.75'E will be carried out by the salvors. Diving operations and heavy equipments will be expected in the vicinity of the wreck.
2. The operations will be carried out in close proximity to the Traffic Separation Scheme and the work area is centred at 500 metres radius around the wreck.
3. The cardinal danger mark buoys will remain functional and in position at all times.

Vessels: Vessels involved in the salvage operations will display the appropriate day and night signals and will stand by on VHF Ch 14 and 12 and shall follow any traffic information given by Vessel Traffic Information Service (VTIS).

III NAVIGATIONAL INFORMATION

Navigational Broadcast: Navigational warning broadcast will be promulgated by VTIS on VHF Ch 09 and NAVTEX to inform vessels of the salvage operation. Mariners are to maintain a listening watch for the above safety information.

Caution: Mariners are advised to navigate with caution and give a wide berth when passing the work area.

Salvors Details: Mr Ken Lim
SMIT SINGAPORE PTE LTD
23 Gul Road Singapore 629356
Email: k.lim@smit.com
Tel: +65 6668 4293

Source : SMIT Singapore Pte Ltd
HD/DB67/008/2010

Charts affected : SP1/GSP1, 202, 502 and 4041.

***(NM 55/2011) SINGAPOREAN PRINT-ON-DEMAND (POD) CHARTS**

Print-On-Demand (POD) Charts are the most up-to-date paper nautical charts printed for navigational use. These nautical charts are produced in accordance with the International Hydrographic Organisation (IHO) charting specifications. These official nautical charts are continually updated to the latest Notices to Mariners before they are printed and sold to users.

These POD Charts include SP1/GSP1, 200, 201, 202, 500, 501, 502 and 503.

BENEFITS TO OUR CUSTOMERS

Convenience

Customers need not make numerous hand corrections to the nautical charts before use. In addition the updated POD Charts are more accurate and reliable than offset printed charts with hand corrections.

Clarity

Clarity in the presentation of updated information as compared to lithographic printed charts, where in some cases there are several overlapping corrections over existing information.

Coverage

The POD Charts cover the Malacca and Singapore Straits, from One Fathom Bank to Horsburgh Lighthouse.

III
AMENDMENTS TO PUBLICATIONS

***(NM 56/2011) UPDATING OF PUBLICATION "SINGAPORE PORT INFORMATION 2010/2011"**

1. Page 96

Insert the following:

DEPTHS OF NAVIGATIONAL CHANNELS AND FAIRWAYS

LOCATIONS	DEPTHS (m)	REMARKS
East Johor Strait - Eastern Buoy to Malang Papan Beacon	12.0 m	
East Johor Strait - Malang Papan Beacon to Punggol Point	11.2 m	

Source: Berth List dated 3rd May 2011.

IV
REPRINT OF RADIO NAVIGATIONAL WARNINGS

The following Radio Navigational Warnings have been shortlisted, as they would be of particular interest to mariners.

TT173

VESSELS IN EAST JOHOR STRAIT ARE ADVISED TO NAVIGATE WITH CAUTION WHEN NEAR THE PROJECT AREAS OFF PULAU TEKONG, CHANGI AND MALANG PAPAN AS SHALLOW WATER AREAS EXIST. VESSELS ARE ADVISED TO KEEP LOOKOUT FOR TUGS AND BARGES NAVIGATING NEAR THE PROJECT AREAS AND PASSENGER FERRIES CROSSING BETWEEN CHANGI AND PULAU TEKONG AND VICINITY OF PASIR GUDANG.

TT619

DREDGER QUEEN OF PENTA OCEAN IS CONDUCTING DREDGING OPERATIONS IN COORDINATES:
01° 14·890' N 103° 58·120' E
01° 16·210' N 104° 01·630' E
01° 16·090' N 104° 01·670' E
01° 14·680' N 103° 58·200' E
VESSELS ARE TO KEEP CLEAR.

TT753

A SMALL WOODEN CARGO BOAT 10M IN LENGTH SUNK AT 01° 15·73'N 103° 32·10'E.

TT884

SALVAGE OPERATIONS UNDERWAY IN 01° 13·40'N 103° 57·75'E. ALL SHIPS ARE REQUESTED TO GIVE A WIDE BERTH OF AT LEAST 5 CABLES WHEN PASSING THE AREA.

TT908

DANGER TO NAVIGATION (AMENDED ON 071700Z)
2 TUGBOATS REPORTED SUNK IN POSITION 01° 19·63'N 104° 19·28'E. ALL VESSELS ARE TO NAVIGATE WITH CAUTION.

TT931

VESSELS NAVIGATING IN THE SINGAPORE STRAIT ARE REQUESTED NOT TO DIRECT THEIR HIGH INTENSITY SEARCHLIGHTS SKYWARD IN THE VICINITY OF CHANGI AIRPORT TO AVOID DISRUPTION TO AIR NAVIGATION.

TT953

RACON DELTA Q(6) FL 15 SECS AT POSITION LAT 01° 03·590'N LONG 103° 38·860'E IS REPORTED UNLIT.

SR154

AN UNIDENTIFIED VESSEL REPORTED SUNK SOUTH WEST OF HORSBURGH AT 01° 16·12'N 104° 21·50'E.

ISSUED BY SINGAPORE PORT OPERATIONS CONTROL CENTRE (as at 29th May 2011)

V
**REPRINT OF ADMIRALTY NOTICES TO MARINERS
 FOR DUAL BADGED CHARTS**

These notices can be accessed directly from UKHO Website:

<http://www.ukho.gov.uk/ProductsandServices/MaritimeSafety/Pages/NMPublic.aspx>

1954* SINGAPORE – Port of Singapore – Jurong Island, East Jurong Channel and Main Strait – Banyan Basin, Terumbu Pandan North-eastwards and Pulau Sebarok Southwads – Light-beacon. Buoy. Wreck.

Source: Maritime and Port Authority of Singapore

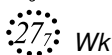
Note: This update has been included in New Editions of Chart 4034 and Chart 4035, published 14 April 2011 and Chart 4036, published 28 April 2011.

Chart 4031 [previous update 1657/11] WGS84 DATUM

Delete  *Fl.G.4s BB8* 1° 15'·051N., 103° 41'·734E.

Chart 4032 [previous update 573/11] WGS84 DATUM

Delete  *Fl.G.4s BB8* 1° 15'·051N., 103° 41'·734E.



Wk

1° 15'·911N., 103° 45'·650E.

Chart 4039 [previous update 1657/11] WGS84 DATUM



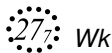
Delete  *Fl(3)G.10s6m4M Gusong (collapsed)* 1° 11'·12N., 103° 47'·65E.

Chart 4040 [previous update 1657/11] WGS84 DATUM


Delete  *Fl(3)G.10s6m4M Gusong (collapsed)* 1° 11'·12N., 103° 47'·65E.



Wk

1° 15'·91N., 103° 45'·65E.

Chart 4041 [previous update 1538/11] WGS84 DATUM

Delete  *Fl(3)G.10s6m4M Gusong (collapsed)* 1° 11'·12N., 103° 47'·65E.

2175* INDONESIA – Sumatera – Pulau Batam – Batuampar – Buoyage.

Source: Indonesian Notices 12/109/11 & 14/126/11

Chart 4041 [previous update 1954/11] WGS84 DATUM

Insert  *Fl.R.4s No.2* (a) 1° 10'·03N., 103° 59'·36E.



Fl.R.4s No.4

Delete former No. 2 light-buoy, close NE of: (a) above

2219* SINGAPORE – Keppel Harbour – Sentosa Cove North-eastwards – Depth.

Source: Maritime and Port Authority of Singapore

Chart 4037 [previous update New Edition 28/04/2011] WGS84 DATUM

Insert depth *14₉* enclosed by 15m contour 1° 15'·307N., 103° 50'·896E.

Updated to Admiralty Notices to Mariners Edition No. 21 of 2011 dated 26th May 2011.

SINGAPORE ELECTRONIC NAVIGATIONAL CHART (ENC) DISTRIBUTORS

Please approach any of the appointed distributors to purchase the Singapore ENC.

DISTRIBUTOR	ADDRESS	TELEPHONE/FAX NO./EMAIL/WEBSITE
DPM (Singapore) Pte Ltd	1 Maritime Square, #09-72 HarbourFront Centre, Singapore 099253	Tel. No.: +65 6270 4060 Fax No.: +65 6276 3858 Email: sales@dpmsingapore.com.sg Website: http://www.dpmsingapore.com.sg
Motion Smith	15 Jalan Kilang Barat #08-01/05 Frontech Centre Singapore 159357	Tel. No.: +65 6220 5098 Fax No.: +65 6225 4902 Email: sales@motsmith.com Website: http://www.motsmith.com
Transas Marine Pacific Pte Ltd	Cyber Centre 16 & 18 Jalan Kilang Barat Singapore 159358	Tel. No.: +65 6271 0200 Fax No.: +65 6271 7300 Email: dominic@transas.com.sg Website: http://www.transas.com.sg
Vector Services Pte Ltd	15 West Coast Highway, #02-14A Pasir Panjang Building Singapore 117861	Tel. No.: +65 6777 3602 Fax No.: +65 6777 9203 Email: kwchoy@pacific.net.sg
ChartWorld GmbH	Ruhrstrasse 90, D-22761 Hamburg, Germany	Tel. No.: +49 40 853 58 6942 Fax No.: +49 40 853 58 6949 Email: sales@chartworld.com Website : http://www.chartworld.com
Japan Hydrographic Association Electronic Charts Division	Daiichi Sogo Bldg, 6F 1-6-6, Hanedakuko, Ota-ku, Tokyo 144- 0041, Japan	Tel. No.: +81 3 5708 7093 Fax No.: +81 3 5708 7094 Email: shimizu-6kj@jha.jp Website: http://www.jha.or.jp/en/jha/
Jeppesen Norway A/S	P.O Box 212 , N-4371 Egersund, Norway	Tel No.: +47 514 64 700 Fax No: +47 514 64 701 Email: license.marine@jeppesen.com Website : http://www.jeppesen.com
PRIMAR STAVANGER	Lervigsveien 36, P.O Box 60, N-4001 Stavanger, Norway	Tel. No.: +47 51 93 9500 Fax No.: +47 51 93 9501 Email: sales@ecc.no Website : http://www.primar.no
United Kingdom Hydrographic Office	Admiralty Way, Taunton, Somerset TA1 2DN United Kingdom	Tel. No.: +44 1823 337900 Fax No.: +44 1823 284077 Email: ENC.SalesReports@ukho.gov.uk Website: http://www.ukho.gov.uk

**Chart Agents for the Maritime and Port Authority of Singapore
Nautical Charts and Publications**

Please approach any of the appointed distributors to purchase the Singapore Nautical Charts and Publications.

DISTRIBUTOR	ADDRESS	TELEPHONE/FAX NO./EMAIL/WEBSITE
DPM (Singapore) Pte Ltd	1 Maritime Square, #09-72 HarbourFront Centre, Singapore 099253	Tel. No.: +65 6270 4060 Fax No.: +65 6276 3858 Email: sales@dpmsingapore.com.sg Website: http://www.dpmsingapore.com.sg
E.W. Liner Charts & Publications Pte Ltd	102F, Pasir Panjang Road, #08-01, Citilink Warehouse Complex, Singapore 118530	Tel. No.: +65 6323 0773 Fax No.: +65 6323 0775 Email: ewliner@singnet.com.sg Website: http://www.ewliner.com
Motion Smith	15 Jalan Kilang Barat #08-01/05 Frontech Centre Singapore 159357	Tel. No.: +65 6220 5098 Fax No.: +65 6225 4902 Email: sales@motsmith.com Website: http://www.motsmith.com

HYDROGRAPHIC NOTE - Instructions

1. Mariners are requested to notify the Chief Hydrographer, Maritime and Port Authority of Singapore, when new or suspected dangers to navigation are discovered, changes are observed in aids to navigation or where corrections to nautical publications may be necessary. Reports, which cannot be confirmed or are lacking in certain details should not be withheld.
2. Any ambiguities of time, positioning and depth should be stressed and any firm expectation of being able to check the information provided on a following voyage should be mentioned.
3. Mariners using satellite position fixing systems, eg. GPS, should provide details of equipment and datum used (where applicable). Where bearings (true or magnetic) are taken visually or by radar to fix a position, it should include more than two objects in order to provide a check on its accuracy. A position may also be defined by bearing and distance from a conspicuous object eg. beacon, lighthouse etc.
4. The note should include a tracing or a digital image of the chart used and the details should be clearly marked.
5. Echo sounders frequently register greater depths than the advertised maximum depth for the equipment, eg. a trace appearing at 50 metres may be in fact be 550 metres or even 1050 metres for equipment whose maximum depth is 500 metres. Erroneous depths caused by 2nd transmission error can usually be recognised by the following:
 - (a) the tracing being weaker than normal for the depth registered,
 - (b) the trace appearing to pass through the transmission line,
 - (c) the feathery nature of the trace.
6. Upon receipt of a hydrographic note, a Notice to Mariners may be issued. The sender's vessel or name is quoted as the source unless the same information is also received in foreign Notices to Mariners.
7. Reports of shoals, uncharted dangers and defects in aids to navigation may also be made to the appropriate Singapore Port Operations Control Centre on VHF Channels 10, 12, 14, 68 or 73.

HYDROGRAPHIC NOTE

To:

Chief Hydrographer
Maritime and Port Authority of Singapore
460 Alexandra Road PSA Building #20-00
Singapore 119963

Tel : (65) 6375 1227
Fax : (65) 6278 7646
Email : hydrographic@mpa.gov.sg

Sender's Contact Details :

Date :

Name of Vessel :

Address of Sender :

Tel : Fax :

Email :

Nature of Observation :

General Location :

Subject :

Position : Lat. Long.

Charts Used :

Date & Time of Observation :

Details :

.....

.....

Attachment :

Equipment Used :

Type of Position Fixing : GPS / DGPS Others :

Type of Echo Sounder :

Name and Signature :

Ship's/Company's Stamp :