



## SINGAPOREAN NOTICES TO MARINERS

---

SECTION	CONTENT	Page
I	Index of Charts & Publications	1
II	New Publications	6
	Notices to Mariners and Chart Corrections	14
	Temporary and Preliminary Notices	15
III	Navigational Information	16
	Amendments to Publications	18
IV	Reprint of Radio Navigational Warnings	19
V	Extract of Admiralty Notices to Mariners for Dual Badged Charts	20

---

**The monthly Notices to Mariners contain corrective information affecting charts published by the Hydrographic Department, Maritime and Port Authority of Singapore. The information contained in these Notices should be updated on the charts affected. Notices under Section II apply only to the particular Singaporean Chart(s) indicated.**

---

Mariners are requested to notify the Chief Hydrographer, Maritime and Port Authority of Singapore, immediately on the discovery of new dangers or suspected dangers to navigation and of changes or defects in aids to navigation. See Hydrographic Note on back page.

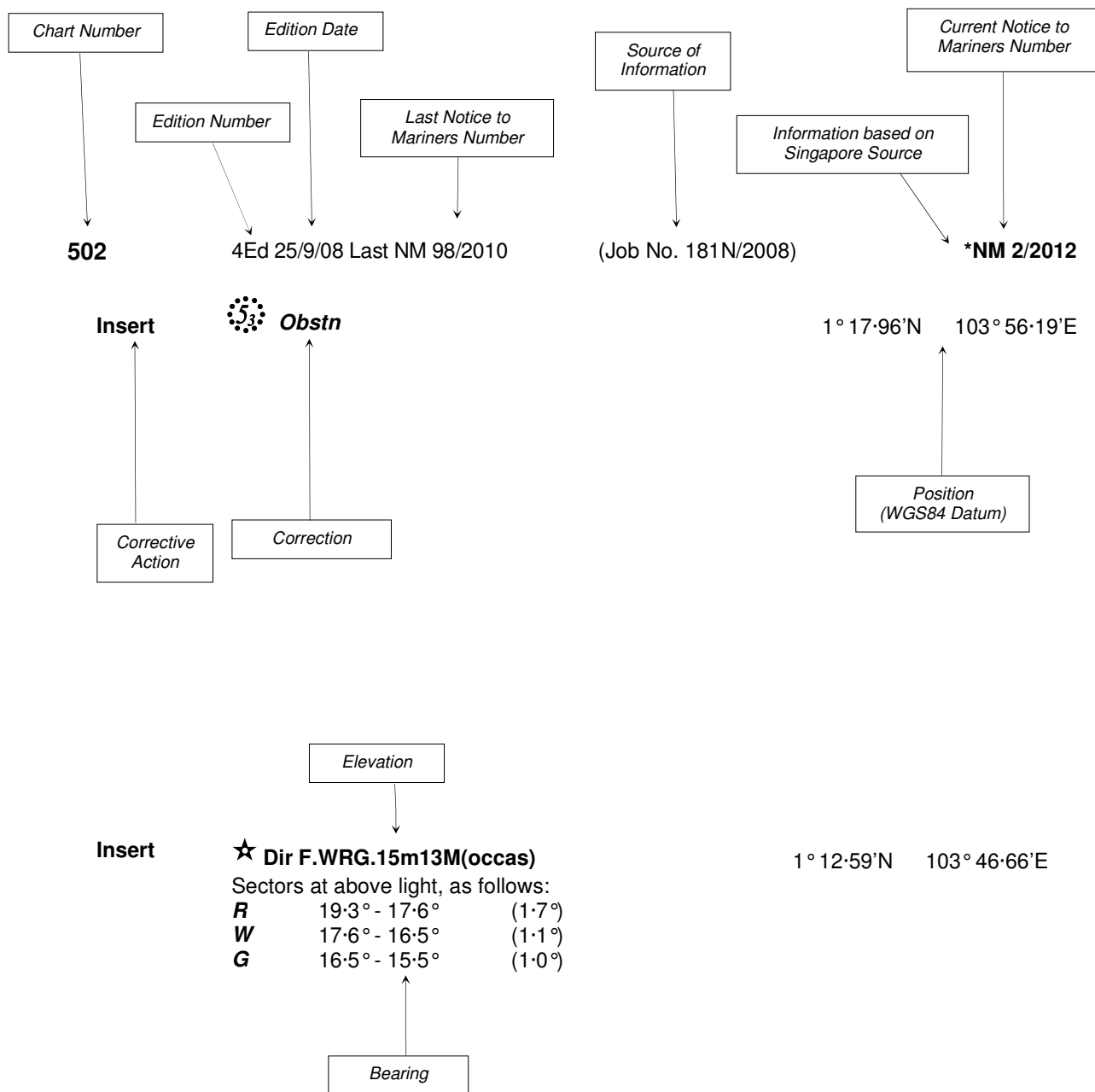
The monthly Singaporean Notices to Mariners can be accessed directly from the MPA website:  
[http://www.mpa.gov.sg/sites/port\\_and\\_shipping/circulars\\_and\\_notices/singapore\\_notices\\_to\\_mariners\(ntm\).page](http://www.mpa.gov.sg/sites/port_and_shipping/circulars_and_notices/singapore_notices_to_mariners(ntm).page)

This service is offered free of charge.

Hydrographic Department  
Maritime and Port Authority of Singapore  
460 Alexandra Road  
PSA Building #20-00  
Singapore 119963  
Tel: (65) 6375 1227  
Fax: (65) 6278 7646

## EXPLANATION OF FORMAT

The elements of a typical chart correction are explained below.



Notes:

- a) Notice to Mariners number followed by:  
**T** indicates a Temporary Notice (eg. **\*NM 3T/2012**).  
**P** indicates a Preliminary Notice (eg. **\*NM 4P/2012**).
- b) Bearings are true reckoned clockwise from 000° to 359°; those relating to lights are from seaward.
- c) Heights and elevations are above Mean High Water Springs.

I  
INDEX OF CHARTS AND PUBLICATIONS

INDEX OF AFFECTED CHARTS

DESCRIPTION	NOTICE NO.	PAGE NO.
Index of Singaporean Charts	-	3
Index of Dual Badged Charts	-	4
Index of Singapore Electronic Navigational Chart (ENC)	-	5
Singapore Port Information 2012/2013	-	6
New Edition Singaporean Charts	-	7, 8
New Editions of the Singapore Electronic Navigational Charts (ENC)	-	8
New Edition Dual Badged Charts	-	9 to 13
Singaporean Chart 202	52	14
Singaporean Chart 502	52	14
Temporary and Preliminary Notices	-	15
Port Marine Notices, Port Marine Circulars	*53	16
Singaporean Print-On-Demand (POD) Charts	*54	17
Amendments to Publications	*55	18
Reprint of Radio Navigational Warnings	-	19
Extract of Admiralty Notices to Mariners for Dual Badged Charts	-	20 to 23
Singapore Electronic Navigational Chart (ENC) Distributors	-	24
Chart Agents for the Maritime and Port Authority of Singapore Nautical Charts and Publications	-	25

\*Denotes information are based on Singaporean source.

I  
INDEX OF CHARTS AND PUBLICATIONS

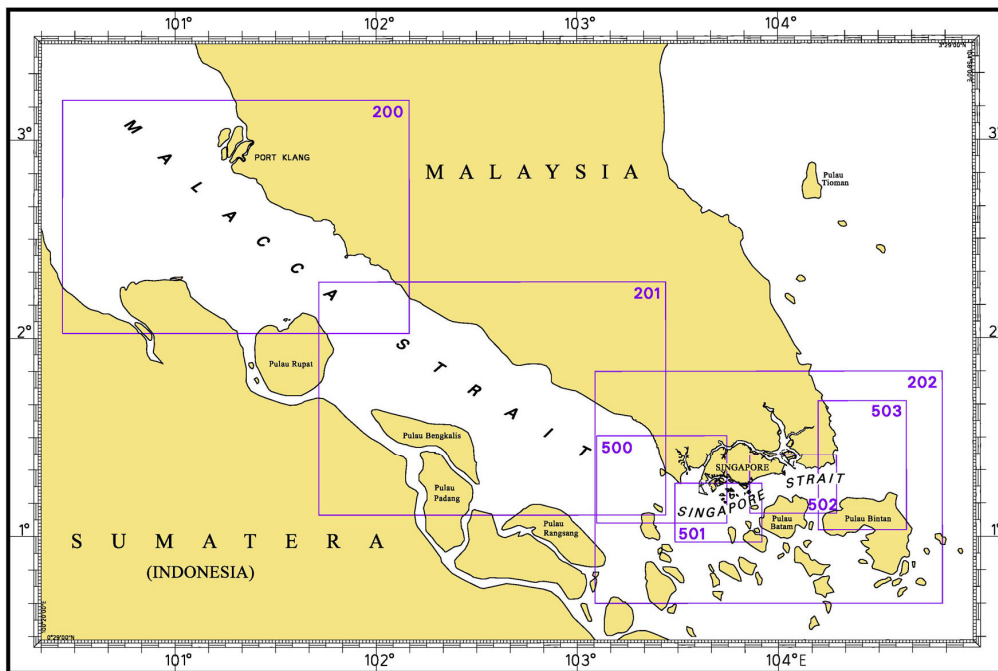
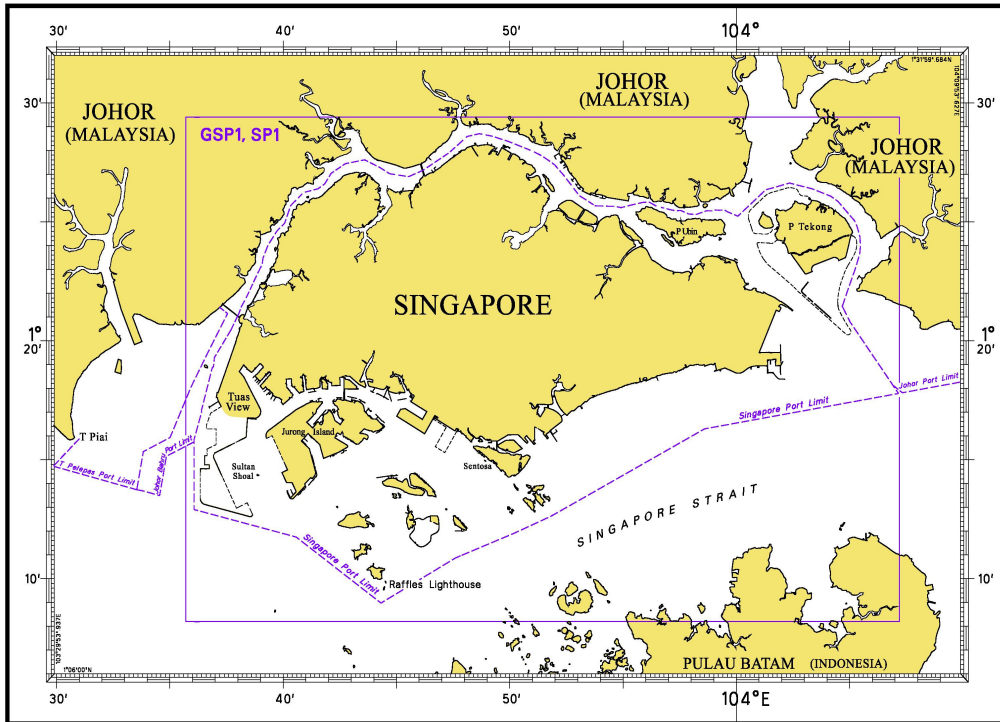
INDEX OF NOTICES

NOTICE NO.	DESCRIPTION	PAGE NO.
-	Index of Singaporean Charts	3
-	Index of Dual Badged Charts	4
-	Index of Singapore Electronic Navigational Chart (ENC)	5
-	Singapore Port Information 2012/2013	6
-	New Edition Singaporean Charts	7, 8
-	New Editions of the Singapore Electronic Navigational Charts (ENC)	8
-	New Edition Dual Badged Charts	9 to 13
52	Singaporean Chart 202	14
52	Singaporean Chart 502	14
-	Temporary and Preliminary Notices	15
*53	Port Marine Notices, Port Marine Circulars	16
*54	Singaporean Print-On-Demand (POD) Charts	17
*55	Amendments to Publications	18
-	Reprint of Radio Navigational Warnings	19
-	Extract of Admiralty Notices to Mariners for Dual Badged Charts	20 to 23
-	Singapore Electronic Navigational Chart (ENC) Distributors	24
-	Chart Agents for the Maritime and Port Authority of Singapore Nautical Charts and Publications	25

\* Denotes information are based on Singaporean source.

# I INDEX OF CHARTS AND PUBLICATIONS

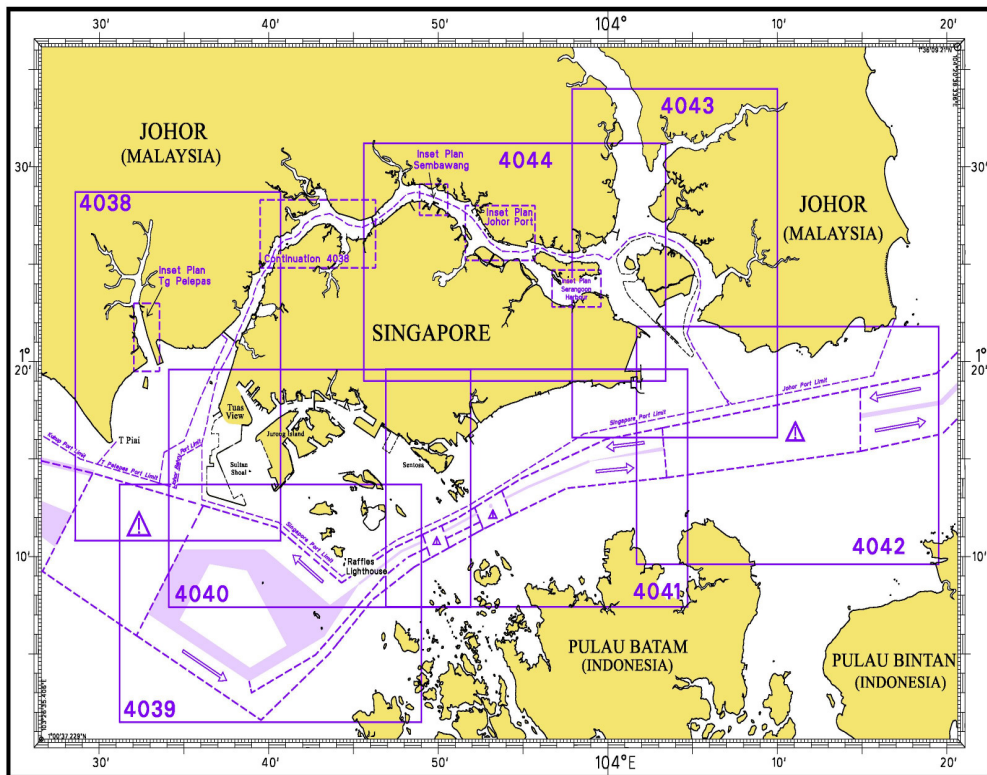
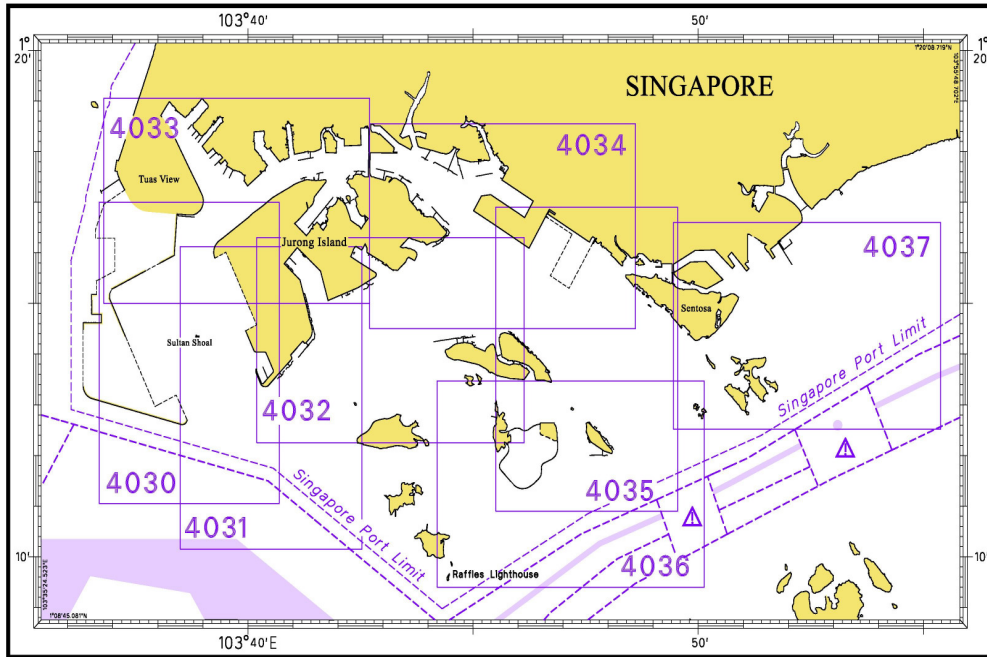
## INDEX OF SINGAPOREAN CHARTS



Notes:  
Updated SINGAPOREAN Charts are available through our Print-On-Demand (POD) Chart Service. For more information, refer to Section III – Navigational Information. These charts can be purchased from our authorised Chart Agents.

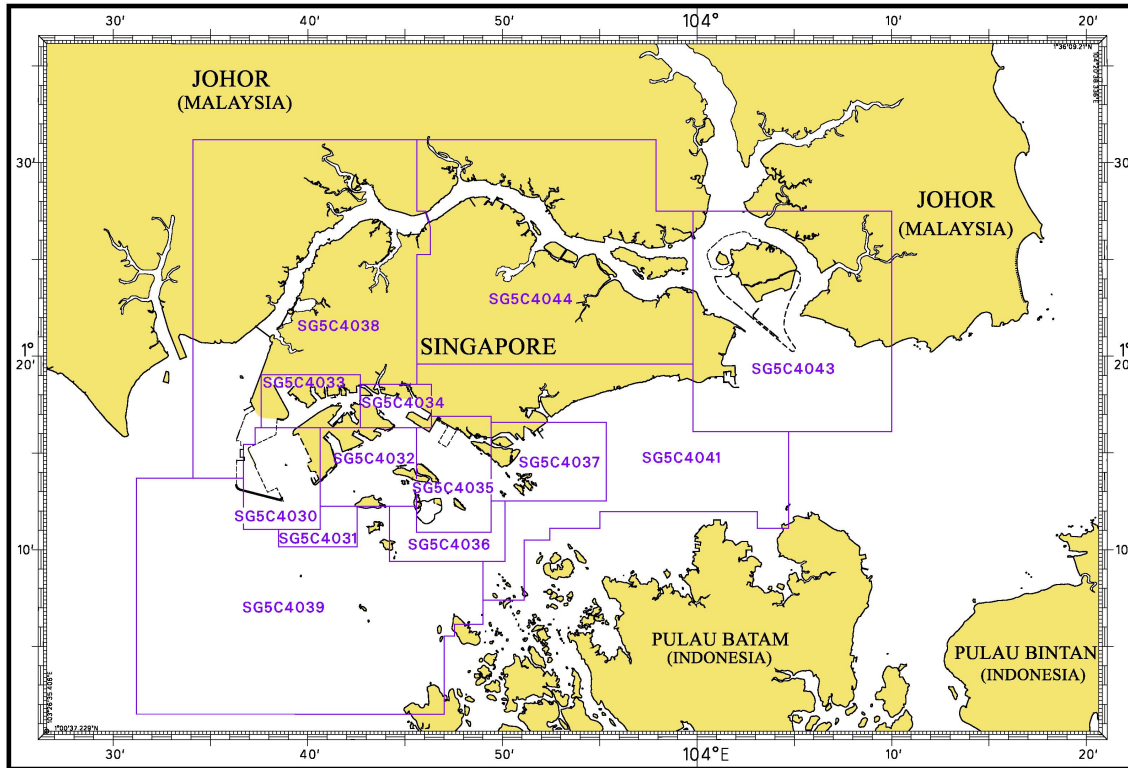
I  
INDEX OF CHARTS AND PUBLICATIONS

**INDEX OF DUAL BADGED CHARTS**



# I INDEX OF CHARTS AND PUBLICATIONS

## INDEX OF SINGAPORE ELECTRONIC NAVIGATIONAL CHART (ENC)



## COVERAGE OF SINGAPORE ELECTRONIC NAVIGATIONAL CHART (ENC)

ENC Name	ENC Coverage	ENC Edition
SG5C4030	West Jurong Anchorages and Temasek Fairway	5 <sup>th</sup> Edition (3/05/2012)
SG5C4031	Western Approaches to Jurong Island	5 <sup>th</sup> Edition (3/05/2012)
SG5C4032	Sinki Fairway	7 <sup>th</sup> Edition (3/05/2012)
SG5C4033	Tuas Bay, West Jurong Channel and Pesek Basin	5 <sup>th</sup> Edition (3/05/2012)
SG5C4034	East Jurong Channel, Pasir Panjang Terminal and West Keppel Fairway	10 <sup>th</sup> Edition (3/05/2012)
SG5C4035	Western Anchorages, Jong Fairway and Cruise Bay	11 <sup>th</sup> Edition (3/05/2012)
SG5C4036	Raffles Lighthouse to The Sisters	6 <sup>th</sup> Edition (3/05/2012)
SG5C4037	Keppel Harbour, Tanjong Pagar Terminal and Approaches	6 <sup>th</sup> Edition (3/05/2012)
SG5C4038	Johor Strait – Western Part	5 <sup>th</sup> Edition (3/05/2012)
SG5C4039	Western Approaches to Main Strait	5 <sup>th</sup> Edition (3/05/2012)
SG5C4041	Pulau Sebarok to Changi	6 <sup>th</sup> Edition (3/05/2012)
SG5C4043	Kuala Johor and Sungai Johor	7 <sup>th</sup> Edition (3/05/2012)
SG5C4044	Johor Strait – Eastern Part	7 <sup>th</sup> Edition (3/05/2012)

## II NEW PUBLICATIONS

### NEW EDITION SINGAPORE PORT INFORMATION 2012/2013 PUBLISHED ON 1<sup>ST</sup> JUNE 2012.

#### Summary of Publication

This publication contains Port Information such as:

#### 1. Routeing and Reporting Information

- a) Straits of Malacca and Singapore – Routeing System.
- b) Mandatory Ship Reporting In the Straits of Malacca and Singapore – Straitrep.
- c) Rules for vessels navigating during hours of darkness through the Straits of Malacca and Singapore.
- d) Revised reporting procedures for notification and confirmation of a vessel's arrival in Singapore
- e) Amendment to reporting procedures for vessels manoeuvring in port.
- f) Guide to VHF communication in port and Singapore Strait
- g) VHF Radio Telephone reporting Procedures for vessel manoeuvring within the Traffic Information Area in the East Johor Strait.
- h) Tall vessels' movements in the port waters surrounding Changi Airport.
- i) Height Restricted Areas in port.

#### 2. Pilotage and Pilotage Exemption Information

#### 3. Port Clearances and Reporting

- a) Port health clearance procedures for vessels arriving in Singapore.
- b) Port clearance formalities for arriving and departing vessels.
- c) Reporting of Marine incidents in port.
- d) Dissemination of passage plan to shipmasters.
- e) Conduct of mandatory Port Limit courses.
- f) Facilities for the collection of garbage from ships in Singapore.

#### 4. Navigational Information

- a) Anchorages and fairways in the port.
- b) The use of canoes and kayaks within the port limits of Singapore.
- c) Depths of Navigational channels and fairways.
- d) Depths of rivers and Basins.

#### 5. Information on Aids to Navigation

- a) IALA Maritime Buoyage System
- b) Characteristics of Aids to Navigation – List of beacons, buoys and lighthouses.

#### 6. Communication – International Code of Signals

#### 7. Nautical Services and Products

- a) Index and chart catalogue of Singaporean charts.
- b) Index and chart catalogue of Dual Badged charts.
- c) Agents for Maritime and Port Authority of Singapore publications.
- d) Singapore Electronic Navigational Charts (ENC) Catalogue and Electronic Navigational Charts Distributors.

#### To Whom Will It Be Useful?

Mariners, shipping community, port users and other interested users.

#### Frequency / Year of Publication

Once every 2 years.

This publication would be available from the following Chart Agents:

- 1) DPM (Singapore) Pte Ltd
- 2) E.W. Liner Charts & Publications Pte Ltd
- 3) Motion Smith

## II NEW PUBLICATIONS

Amendments to anchorages and fairways affecting the following publications:  
(It will be implemented from 0000 HOURS UT, 1<sup>st</sup> June 2012)

**NEW EDITION SINGAPOREAN CHARTS PUBLISHED ON 3<sup>RD</sup> MAY 2012  
(THESE CHARTS SHOW CHANGES TO ANCHORAGES AND FAIRWAYS WHICH  
COME INTO EFFECT 0000 HOURS UT, 1<sup>ST</sup> JUNE 2012)**

**Chart Number** : GSP1  
**Title** : Anchorages and Aids to Navigation (with area reference)  
**Coverage** : Lat 01°08'20"N 01°29'40"N  
 Long 103°35'70"E 104°07'20"E  
**Scale** : 1: 60 000  
**Date Published** : 3<sup>rd</sup> May 2012  
**Size of Chart** : 973.9 x 651.2 mm  
**Description of changes** : This new edition includes :
 

- Revised anchorages and fairways
- Revised Height Restricted Area
- New submarine cables
- Marina Bay Cruise Centre
- Reclamation at Ayer Merbau (Jurong Island)
- New depth contours covering:-
  - i. East Jurong Channel
  - ii. Around Pulau Tekong
  - iii. West Bound Lane of the TSS South of Eastern Anchorages
  - iv. Jong Fairway
  - v. East Keppel Fairway

This new edition supersedes the earlier edition published on 27<sup>th</sup> January 2011.

**Chart Number** : SP1  
**Title** : Anchorages and Aids to Navigation  
**Coverage** : Lat 01°08'20"N 01°29'40"N  
 Long 103°35'70"E 104°07'20"E  
**Scale** : 1: 60 000  
**Date Published** : 3<sup>rd</sup> May 2012  
**Size of Chart** : 973.9 x 651.2 mm  
**Description of changes** : This new edition includes :
 

- Revised anchorages and fairways
- Revised Height Restricted Area
- New submarine cables
- Marina Bay Cruise Centre
- Reclamation at Ayer Merbau (Jurong Island)
- New depth contours covering:-
  - i. East Jurong Channel
  - ii. Around Pulau Tekong
  - iii. West Bound Lane of the TSS South of Eastern Anchorages
  - iv. Jong Fairway
  - v. East Keppel Fairway

This new edition supersedes the earlier edition published on 27<sup>th</sup> January 2011.

## II NEW PUBLICATIONS

### NEW EDITION SINGAPOREAN CHARTS PUBLISHED ON 3<sup>RD</sup> MAY 2012 (THESE CHARTS SHOW CHANGES TO ANCHORAGES AND FAIRWAYS WHICH COME INTO EFFECT 0000 HOURS UT, 1<sup>ST</sup> JUNE 2012)

<b>Chart Number</b>	:	501
<b>Title</b>	:	Singapore Strait – Western Part
<b>Coverage</b>	:	Lat 0°58·37'N 1°16·00'N Long 103°29·17'E 103°55·05'E
<b>Scale</b>	:	1: 50 000
<b>Date Published</b>	:	3 <sup>rd</sup> May 2012
<b>Size of Chart</b>	:	960.0 x 649.9 mm
<b>Description of changes</b>	:	This new edition includes : <ul style="list-style-type: none"> <li>• Revised anchorages and fairways</li> <li>• New submarine cables</li> <li>• New coastline of Jurong Island</li> <li>• Updated surveys covering Dual Badged Charts 4039, 4040 and 4041 which would be published on 3<sup>rd</sup> May 2012.</li> </ul>

This new edition supersedes the earlier edition published on 24<sup>th</sup> Sep 2009.

<b>Chart Number</b>	:	502
<b>Title</b>	:	Singapore Strait – Eastern Part
<b>Coverage</b>	:	Lat 01°07·00'N 01°24·61'N Long 103°51·43'E 104°17·31'E
<b>Scale</b>	:	1: 50 000
<b>Date Published</b>	:	3 <sup>rd</sup> May 2012
<b>Size of Chart</b>	:	960.0 x 649.2 mm
<b>Description of changes</b>	:	This new edition includes : <ul style="list-style-type: none"> <li>• Revised anchorages and fairways</li> <li>• Revised Height Restricted Area</li> <li>• Marina Bay Cruise Centre</li> <li>• Updated surveys covering Dual Badged Chart 4041, which would be published on 3<sup>rd</sup> May 2012.</li> <li>• New submarine cables and topographic details</li> </ul>

This new edition supersedes the earlier edition published on 22<sup>nd</sup> Sep 2011.

### NEW EDITIONS OF THE SINGAPORE ELECTRONIC NAVIGATIONAL CHARTS (ENC) (RELEASE 2012) RELEASED ON 3<sup>RD</sup> MAY 2012

For more information:

Please contact Ms Jenny Goh/Carrie Ang at Tel: 6375 1575/1557 or visit our website:

[http://www.mpa.gov.sg/sites/port\\_and\\_shipping/port/charts\\_tidal\\_information\\_and\\_hydrography/charts/Singapore\\_electronic\\_navigational\\_chart\(enc\).page](http://www.mpa.gov.sg/sites/port_and_shipping/port/charts_tidal_information_and_hydrography/charts/Singapore_electronic_navigational_chart(enc).page)

## II NEW PUBLICATIONS

Amendments to anchorages and fairways affecting the following publications:  
(It will be implemented from 0000 HOURS UT, 1<sup>st</sup> June 2012)

**NEW EDITION DUAL BADGED CHARTS PUBLISHED ON 3<sup>RD</sup> MAY 2012  
(THESE CHARTS SHOW CHANGES TO ANCHORAGES AND FAIRWAYS WHICH  
COME INTO EFFECT 0000 HOURS UT, 1<sup>ST</sup> JUNE 2012)**

**Chart Number** : 4030  
**Title** : Port of Singapore  
 West Jurong Anchorages and Temasek Fairway  
**Coverage** : Lat 01°11·05'N 01°17·00'N  
 Long 103°36·70'E 103°40·70'E  
**Scale** : 1: 10 000  
**Date Published** : 3<sup>rd</sup> May 2012  
**Size of Chart** : 742.0 x 1096.5 mm  
**Description of changes** : a) Updated survey data covering these areas :
 

- Temasek Fairway
- West Jurong Anchorages
- West Jurong Channel
- Sudong Holding Anchorage
- Area surrounding the Tuas View Extension

 b) Amendment of West Jurong Anchorage  
 c) Deletion of Tuas Petroleum Holding Anchorage

The existing chart of the same number published on 25<sup>th</sup> March 2010 will be superseded.

---

**Chart Number** : 4031  
**Title** : Port of Singapore  
 Western Approaches to Jurong Island  
**Coverage** : Lat 01°10·15'N 01°16·12'N  
 Long 103°38·50'E 103°42·53'E  
**Scale** : 1: 10 000  
**Date Published** : 3<sup>rd</sup> May 2012  
**Size of Chart** : 747.5 x 1100.2 mm  
**Description of changes** : a) Updated survey data covering these areas :
 

- Temasek Fairway
- Sudong Anchorages
- Banyan Basin
- Approaches to Sinki Fairway

 b) Amendment of West Jurong Anchorage

The existing chart of the same number published on 25<sup>th</sup> March 2010 will be superseded.

---

## II NEW PUBLICATIONS

### NEW EDITION DUAL BADGED CHARTS PUBLISHED ON 3<sup>RD</sup> MAY 2012 (THESE CHARTS SHOW CHANGES TO ANCHORAGES AND FAIRWAYS WHICH COME INTO EFFECT 0000 HOURS UT, 1<sup>ST</sup> JUNE 2012)

<b>Chart Number</b>	:	4032
<b>Title</b>	:	Port of Singapore Sinki Fairway
<b>Coverage</b>	:	Lat 01°12'25"N 01°16'30"N Long 103°40'20"E 103°46'13"E
<b>Scale</b>	:	1: 10 000
<b>Date Published</b>	:	3 <sup>rd</sup> May 2012
<b>Size of Chart</b>	:	1100.0 x 746.4 mm
<b>Description of changes</b>	:	a) Updated survey data covering these areas : <ul style="list-style-type: none"> <li>• Portion of Banyan Basin</li> <li>• Sakra Basin</li> <li>• East Jurong Channel</li> <li>• South of Pulau Ular</li> <li>• Selat Sinki</li> </ul> <p>b) Amendment of Selat Pauh Anchorage</p> <p>c) Insertion of Selat Pauh Petroleum Anchorage</p>

The existing chart of the same number published on 4<sup>th</sup> March 2010 will be superseded.

<b>Chart Number</b>	:	4033
<b>Title</b>	:	Port of Singapore Tuas Bay, West Jurong Channel and Pesek Basin
<b>Coverage</b>	:	Lat 01°15'00"N 01°19'05"N Long 103°36'80"E 103°42'70"E
<b>Scale</b>	:	1: 10 000
<b>Date Published</b>	:	3 <sup>rd</sup> May 2012
<b>Size of Chart</b>	:	1094.4 x 746.4 mm
<b>Description of changes</b>	:	a) Updated survey data covering these areas : <ul style="list-style-type: none"> <li>• Temasek Fairway</li> <li>• Portion of West Jurong Channel</li> <li>• Tanjong Kling Basin</li> <li>• East Samulun Basin</li> <li>• West Samulun Basin</li> <li>• Pesek Basin</li> <li>• Northern Tuas Basin</li> </ul> <p>b) Amendment of West Jurong Anchorage</p> <p>c) Deletion of Tuas Petroleum Holding Anchorage</p>

The existing chart of the same number published on 4<sup>th</sup> March 2010 will be superseded.

## II NEW PUBLICATIONS

**NEW EDITION DUAL BADGED CHARTS PUBLISHED ON 3<sup>RD</sup> MAY 2012  
(THIS CHART SHOWS CHANGES TO ANCHORAGES AND FAIRWAYS WHICH  
COME INTO EFFECT 0000 HOURS UT, 1<sup>ST</sup> JUNE 2012)**

**Chart Number** : 4039  
**Title** : Western Approaches to Main Strait  
**Coverage** : Lat 01°01'50"N 01°13'70"N  
Long 103°31'20"E 103°49'00"E  
**Scale** : 1:30 000  
**Date Published** : 3<sup>rd</sup> May 2012  
**Size of Chart** : 1100.7 x 749.5 mm  
**Description of changes** : a) Updated survey data covering these areas :

- South of Tuas View Extension
- Shell SBM Area
- Jong Fairway
- Sudong Anchorages
- Selat Pauh Anchorage
- Sinki Fairway

b) Amendment of the following anchorages:

- Selat Pauh Anchorage
- Raffles Reserved Anchorage

c) Insertion of the following anchorages:

- Raffles Petroleum Anchorage
- Sudong Petroleum Holding Anchorage
- Selat Pauh Petroleum Anchorage

The existing chart of the same number published on 11<sup>th</sup> August 2011 will be superseded.

---

## II NEW PUBLICATIONS

### NEW EDITION DUAL BADGED CHARTS PUBLISHED ON 3<sup>RD</sup> MAY 2012 (THIS CHART SHOWS CHANGES TO ANCHORAGES AND FAIRWAYS WHICH COME INTO EFFECT 0000 HOURS UT, 1<sup>ST</sup> JUNE 2012)

<b>Chart Number</b>	:	4040
<b>Title</b>	:	Singapore, Indonesia and Malaysia Tuas View to Pulau Sakijang Bendera (S. John's Island)
<b>Coverage</b>	:	Lat 01°07'40"N 01°19'60"N Long 103°34'10"E 103°51'90"E
<b>Scale</b>	:	1: 30 000
<b>Date Published</b>	:	3 <sup>rd</sup> May 2012
<b>Size of Chart</b>	:	1100.6 x 749.5 mm
<b>Description of changes</b>	:	<p>a) Updated survey data covering these areas :</p> <ul style="list-style-type: none"> <li>• Area surrounding the Tuas View Extension</li> <li>• West and East Jurong Channel</li> <li>• Portion of Temasek Fairway</li> <li>• Portion of East Jurong Channel</li> <li>• Approaches to Tanjong Pagar Terminal</li> </ul> <p>b) Amendment of the following fairways and anchorages:</p> <ul style="list-style-type: none"> <li>• West Keppel Fairway</li> <li>• East Keppel Fairway</li> <li>• West Jurong Anchorage</li> <li>• Selat Pauh Anchorage</li> <li>• Raffles Reserved Anchorage</li> </ul> <p>c) Deletion of the following fairway and anchorage:</p> <ul style="list-style-type: none"> <li>• Pasir Panjang Fairway</li> <li>• Tuas Petroleum Holding Anchorage</li> </ul> <p>d) Insertion of the following anchorages:</p> <ul style="list-style-type: none"> <li>• Sudong Petroleum Holding Anchorage</li> <li>• Selat Pauh Petroleum Anchorage</li> <li>• Raffles Petroleum Anchorage</li> </ul>

The existing chart of the same number published on 11<sup>th</sup> August 2011 will be superseded.

---

## II NEW PUBLICATIONS


### NEW EDITION DUAL BADGED CHARTS PUBLISHED ON 3<sup>RD</sup> MAY 2012 (THIS CHART SHOWS CHANGES TO ANCHORAGES AND FAIRWAYS WHICH COME INTO EFFECT 0000 HOURS UT, 1<sup>ST</sup> JUNE 2012)

<b>Chart Number</b>	:	4041
<b>Title</b>	:	Singapore and Indonesia Pulau Sebarok to Changi
<b>Coverage</b>	:	Lat 01°07'40"N 01°19'60"N Long 103°46'90"E 104°04'70"E
<b>Scale</b>	:	1: 30 000
<b>Date Published</b>	:	3 <sup>rd</sup> May 2012
<b>Size of Chart</b>	:	1100.6 x 749.5 mm
<b>Description of changes</b>	:	<p>a) Updated survey data covering these areas :</p> <ul style="list-style-type: none"> <li>• West Bound Lane of the Traffic Separation Scheme</li> <li>• Portion of East Keppel Fairway</li> <li>• Approaches to Tanjong Pagar Terminal</li> <li>• Marina Bay Cruise Centre</li> </ul> <p>b) Amendment of the following fairway and anchorages:</p> <ul style="list-style-type: none"> <li>• East Keppel Fairway</li> <li>• Eastern Petroleum B Anchorage</li> <li>• Eastern Special Purposes A Anchorage</li> <li>• Eastern Bunkering C Anchorage</li> </ul> <p>c) Deletion of the following anchorages:</p> <ul style="list-style-type: none"> <li>• Explosives Anchorage</li> <li>• Eastern Special Purposes D Anchorage</li> <li>• Eastern Special Purposes B Anchorage</li> <li>• Small Craft Anchorage</li> <li>• Laid-up Vessels Anchorage</li> </ul> <p>d) Insertion of the following anchorages:</p> <ul style="list-style-type: none"> <li>• Small Craft A Anchorage</li> <li>• Small Craft B Anchorage</li> <li>• Eastern Petroleum C Anchorage</li> </ul> <p>e) Renaming of Corridor to Eastern Corridor</p> <p>f) Height Restricted Areas:</p> <ul style="list-style-type: none"> <li>• Amendment of Height Restricted Area for all vessels over 15 metres high.</li> <li>• Insertion of Height Restricted Area for all vessels over 30 metres high.</li> </ul>


The existing chart of the same number published on 11<sup>th</sup> August 2011 will be superseded.

---

**II**  
**NOTICES TO MARINERS AND CHART CORRECTIONS**

<b>202</b>	6 Ed 24/09/09 Last NM 34/2012	(Admiralty Notice 19/2044/2012)	<b>NM 52/2012</b>
<b>Insert</b>	limit of anchorage area, pecked line, joining:	(a) 1°08·80'N	104°09·65'E
		(b) 1°11·00'N	104°09·00'E
		(c) 1°11·00'N	104°10·67'E
		(d) 1°08·80'N	104°10·67'E
	legend,  <b>Lay Up</b> , within:	(a)-(d) above	
	①	1°07·10'N	104°10·08'E

---

<b>502</b>	6 Ed 3/05/12	(Admiralty Notice 19/2044/2012)	<b>NM 52/2012</b>
<b>Insert</b>	limit of anchorage area, pecked line, joining:	(a) 1°08·80'N	104°09·65'E
		(b) 1°11·00'N	104°09·00'E
		(c) 1°11·00'N	104°10·67'E
		(d) 1°08·80'N	104°10·67'E
	legend,  <b>Lay Up</b> , within:	(a)-(d) above	
	①	1°07·10'N	104°10·08'E

---

**II**  
**TEMPORARY AND PRELIMINARY NOTICES**

NIL

### III NAVIGATIONAL INFORMATION

**\*(NM 53/2012) PORT MARINE NOTICES and PORT MARINE CIRCULARS**

The following PMNs and PMCs have been shortlisted, as they would be of particular interest to mariners.

These notices can be accessed directly from MPA website:

[http://www.mpa.gov.sg/sites/port\\_and\\_shipping/circulars\\_and\\_notices/port\\_marine\\_notices.page](http://www.mpa.gov.sg/sites/port_and_shipping/circulars_and_notices/port_marine_notices.page)

[http://www.mpa.gov.sg/sites/port\\_and\\_shipping/circulars\\_and\\_notices/port\\_marine\\_circulars.page](http://www.mpa.gov.sg/sites/port_and_shipping/circulars_and_notices/port_marine_circulars.page)

<b>PMN No.</b>	<b>Subject</b>
52/2012	Construction of Changi East Finger Extension.
56/2012	Construction of secondary SLNG Terminal at Jurong Island.
57/2012	Dredging works at Gul Basin.
62/2012	Dredging works at ST Marine Waterfront off Tuas Bay.
64/2012	Maintenance work on sea barrier off West Johor Strait.
66/2012	Area survey off Pulau Busing.
67/2012	Construction of Solid Handling Pier and protection bund at Ayer Chawan Basin, Jurong Island.
68/2012	Soil investigation works off Tuas View.
70/2012	Construction of pontoon facility at West Coast Base.
<b>PMC No.</b>	<b>Subject</b>
6/2012	Revision of Anchorages, Fairways and Channels in Port.
7/2012	Revision of Height Restricted Areas in the Eastern Sector of the Port.
8/2012	Special Bunkering Anchorage (SBA) Scheme – Compulsory Pilotage.

---

### III NAVIGATIONAL INFORMATION

#### \*(NM 54/2012) SINGAPOREAN PRINT-ON-DEMAND (POD) CHARTS

Print-On-Demand (POD) Charts are the most up-to-date paper nautical charts printed for navigational use. These nautical charts are produced in accordance with the International Hydrographic Organisation (IHO) chart specifications. These official nautical charts are continually updated to the latest Notices to Mariners before they are printed and sold to users.

These POD Charts include GSP1, SP1, 200, 201, 202, 500, 501, 502 and 503.

#### BENEFITS TO OUR CUSTOMERS

##### **Convenience**

Customers need not make numerous hand corrections to the nautical charts before use. In addition the updated POD Charts are more accurate and reliable than offset printed charts with hand corrections.

##### **Clarity**

Clarity in the presentation of updated information as compared to lithographic printed charts, where in some cases there are several overlapping corrections over existing information.

##### **Coverage**

The POD Charts cover the Malacca and Singapore Straits, from One Fathom Bank to Horsburgh Lighthouse.

---

**III**  
**AMENDMENTS TO PUBLICATIONS**

**\*(NM 55/2012) UPDATING OF PUBLICATION "SINGAPORE PORT INFORMATION 2012/2013"**

1. Amendments to Chartlets on pages 64, 65 and 66.

**SPECIAL BUNKERING ANCHORAGE (SBA) SCHEME – COMPULSORY PILOTAGE**

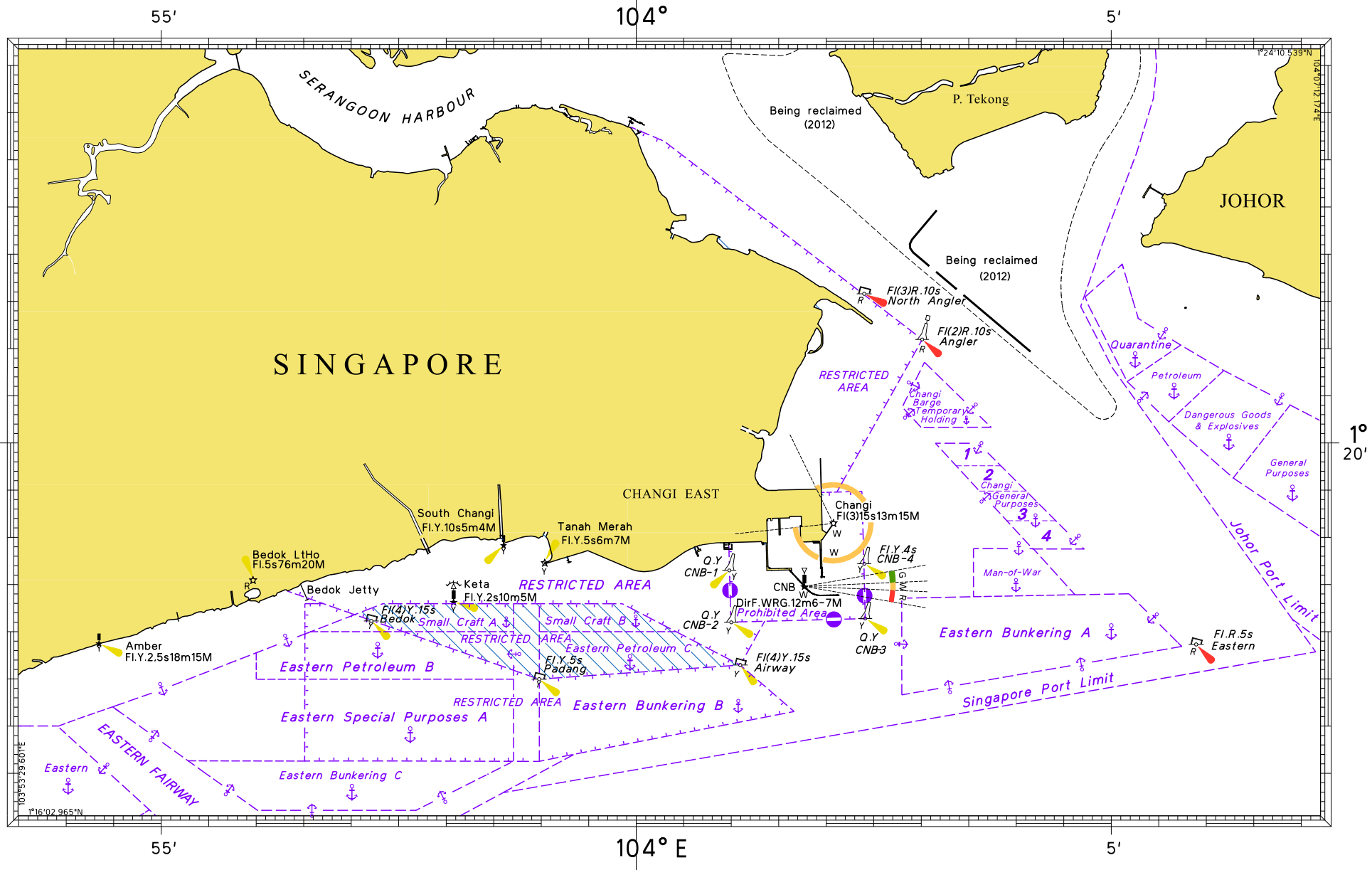
With the implementation of the compulsory pilotage with effect from 1<sup>st</sup> June 2012, the 18 sectors in the **eastern bunkering anchorages** shown on the chartlets on pages 64, 65 and 66 of the Singapore Port Information 2012/2013 will be deleted from these chartlets.

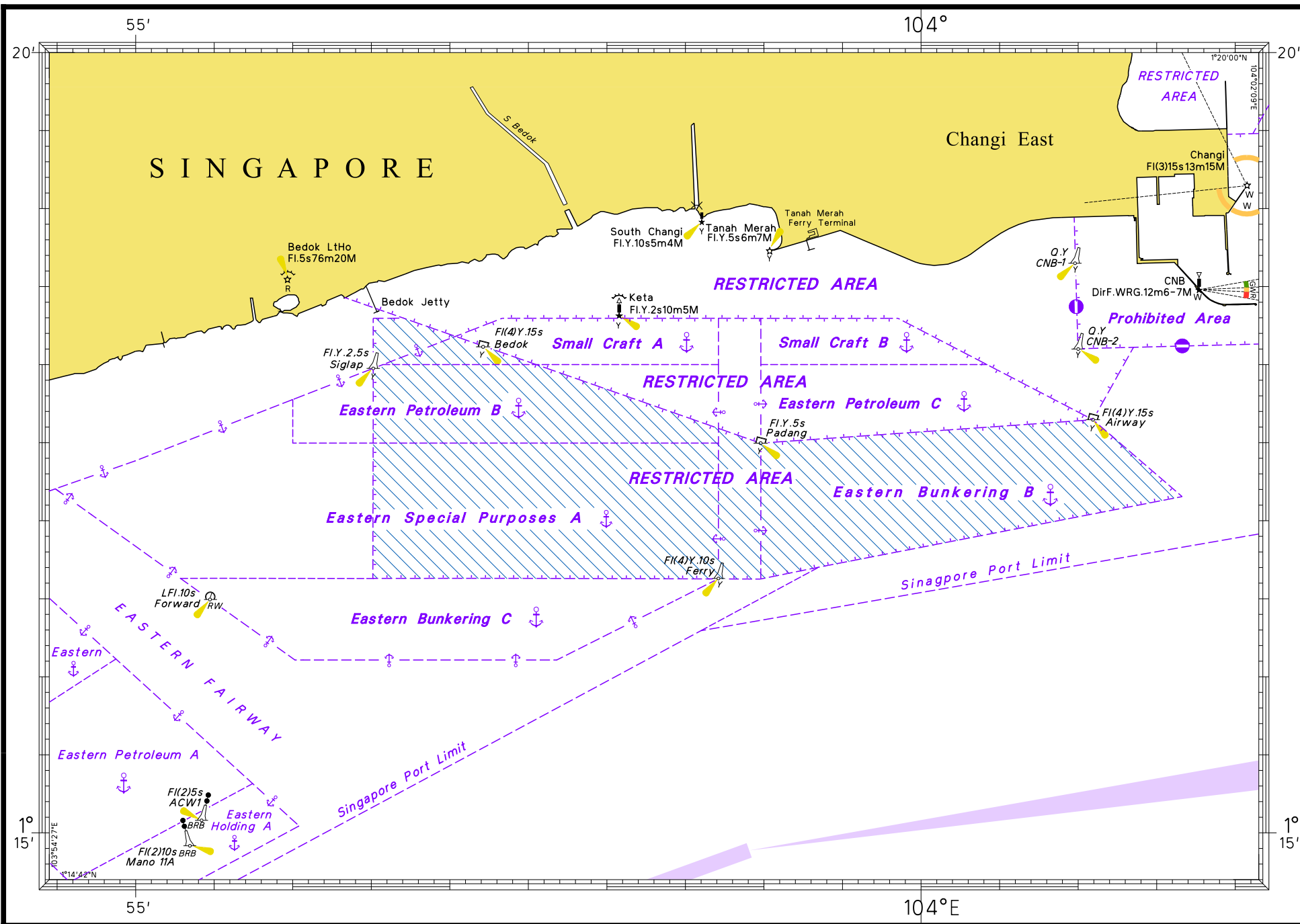
**Remarks :** Refer attached chartlets for pages 64, 65 and 66.

**Source :** Maritime and Port Authority of Singapore, Port Marine Circular No. 8 of 2012 dated 3 May 2012

---







**IV**  
**REPRINT OF RADIO NAVIGATIONAL WARNINGS**

The following Radio Navigational Warnings have been shortlisted, as they would be of particular interest to mariners.

TT022 (AMENDED 060130Z)

A COASTER VESSEL WAS REPORTED SUNK IN POSITION 01°10-80'N 103°34-00'E.

TT029

CABLE SHIP 'MIRAERO' IS CARRYING OUT SUBMARINE CABLE WORKS ALONG THE FOLLOWING COORDINATES:

A 01°15.37'N 104°04.77'E

B 01°16.13'N 104°04.14'E

C 01°16.77'N 104°03.32'E

D 01°16.79'N 104°03.06'E

VESSELS ARE TO GIVE A WIDE BERTH AND NAVIGATE WITH CAUTION.

TT032 (AMENDED 260247Z)

BUFFALO ROCK ISOLATED DANGER BUOY FL(2)5S IN POSITION 01°09-9'N 103°48-25'E IS UNLIT.

TT033

SELAT PHILLIP ISOLATED DANGER BUOY FL(2)5S IN POSITION 01°05-80'N 103°43-60'E IS REPORTED ADRIFT TO A POSITION 01°07-59'N 103°45-67'E AT 110100UTC APR 2012.

TT043

BATU BERHANTI BUOY FL(2)5SECS IN POSITION 01°11.76'N 103°52.51'E ARE REMOVED FOR MAINTENANCE.

TT173

VESSELS IN EAST JOHOR STRAIT ARE ADVISED TO NAVIGATE WITH CAUTION WHEN NEAR THE PROJECT AREAS OFF PULAU TEKONG, CHANGI AND MALANG PAPAN AS SHALLOW WATER AREAS EXIST. VESSELS ARE ADVISED TO KEEP LOOKOUT FOR TUGS AND BARGES NAVIGATING NEAR THE PROJECT AREAS AND PASSENGER FERRIES CROSSING BETWEEN CHANGI AND PULAU TEKONG AND VICINITY OF PASIR GUDANG.

TT884

SALVAGE OPERATIONS UNDERWAY IN 01°13-40'N 103°57-75'E. ALL SHIPS ARE REQUESTED TO GIVE A WIDE BERTH OF AT LEAST 5 CABLES WHEN PASSING THE AREA.

TT931

VESSELS NAVIGATING IN THE SINGAPORE STRAIT ARE REQUESTED NOT TO DIRECT THEIR HIGH INTENSITY SEARCHLIGHTS SKYWARD IN THE VICINITY OF CHANGI AIRPORT TO AVOID DISRUPTION TO AIR NAVIGATION.

TT961

VESSELS INTENDING TO CROSS THE TRAFFIC SEPARATION SCHEME(TSS) OR PRECAUTIONARY AREAS IN THE SINGAPORE STRAIT DURING THE HOURS OF DARKNESS ARE RECOMMENDED TO DISPLAY THE NIGHT SIGNALS CONSISTING OF 3 ALL-ROUND GREEN LIGHTS IN A VERTICAL LINE WITH EFFECT FROM 1ST JULY 2011 AT 0000UTC (0800SGT) AS DETAILED IN MARITIME AND PORT AUTHORITY OF SINGAPORE'S PORT MARINE CIRCULAR, 02 OF 2011 DATED 30 MAY 2011.

TT997

BUFFALO ROCK LIGHT BEACON IN POSITION 01°09.41'N 103°48.8'E ARE REPORTED COLLAPSED.

-----  
ISSUED BY SINGAPORE PORT OPERATIONS CONTROL CENTRE (as at 27<sup>th</sup> May 2012)

V  
**EXTRACT OF ADMIRALTY NOTICES TO MARINERS  
 FOR DUAL BADGED CHARTS**

These notices can also be accessed directly from UKHO Website:

<http://www.ukho.gov.uk/ProductsandServices/MaritimeSafety/Pages/NMPublic.aspx>

**1873\* SINGAPORE – Nipa Transit Anchorage Westwards, Tanjung Piai Eastwards and Pulau Bukom North-eastwards – Wreck. Buoyage.**

Source: Maritime and Port Authority of Singapore

Note: This update has been included in New Editions of Charts 4039 and 4040 published 3 May 2012.

**Chart 4035** [ previous update 1594/12 ] WGS84 DATUM

Delete  *Fl.Y.4s ADCP3* 1° 14'·320N., 103° 46'·292E.

**Chart 4038** [ previous update 1592/12 ] WGS84 DATUM

Insert  *Fl(4)Y.10s* 1° 15'·26N., 103° 33'·54E.

**2044\* INDONESIA – Sumatera – Pulau Batam – Tanjung Bemban Eastwards – Anchorage area. Legend. Pilot boarding place.**

Source: Kabil Port

**Chart 4042** [ previous update 1116/12 ] WGS84 DATUM

Insert limit of anchorage area, pecked line, joining:

(a)	1° 09'·55N., 104° 09'·43E. (S border)
(b)	1° 11'·00N., 104° 09'·00E.
(c)	1° 11'·00N., 104° 10'·67E.
(d)	1° 09'·55N., 104° 10'·67E. (S border)

legend,  *Lay Up*, within: (a)-(d) above

**2060\* SINGAPORE – Keppel Harbour – Keppel Terminal, Brani Terminal and Tanjong Pagar Terminal – Dredged depths.**

Source: Maritime and Port Authority of Singapore

**Chart 4037** [ previous update 1593/12 ] WGS84 DATUM

Amend dredged depth to, **11·0m (2009)**, centred on: 1° 16'·005N., 103° 49'·875E.  
 dredged depth to, **15·0m (2009)**, centred on: 1° 15'·832N., 103° 49'·905E.  
 1° 15'·838N., 103° 50'·080E.  
 1° 15'·780N., 103° 50'·240E.  
 dredged depth to, **13·4m (2011)**, centred on: 1° 15'·710N., 103° 50'·790E.  
 dredged depth to, **13·2m (2011)**, centred on: 1° 15'·820N., 103° 50'·895E.  
 dredged depth to, **14·5m (2011)**, centred on: 1° 15'·700N., 103° 51'·000E.

**2363\* SINGAPORE – Sultan Shoal to Changi Naval Base East-south-eastwards – Anchorage areas. Restricted areas. Depths. Cautionary notes. Legends. Fairways.**

Source: Maritime and Port Authority of Singapore

Note: Charts 4035, 4036, 4038, 4043 are to be deleted from Notice 1729(P)/12.

**Chart 4034** [ previous update 1115/12 ] WGS84 DATUM

Delete limit of fairway, pecked line, joining: 1° 15'·391N., 103° 45'·677E.  
 (existing limit)

V  
**EXTRACT OF ADMIRALTY NOTICES TO MARINERS  
 FOR DUAL BADGED CHARTS**

2363\* SINGAPORE – Sultan Shoal to Changi Naval Base East-south-eastwards – Anchorage areas. Restricted areas. Depths. Cautionary notes. Legends. Fairways. (continued)

- (a) 1° 15'·938N., 103° 46'·500E.  
 1° 16'·449N., 103° 46'·803E.  
 1° 16'·230N., 103° 47'·112E.  
 1° 16'·170N., 103° 47'·070E.  
 1° 16'·166N., 103° 47'·080E.  
 (existing maritime limit)  
 and  
 1° 16'·341N., 103° 47'·181E.  
 (existing maritime limit)  
 1° 16'·578N., 103° 46'·846E.  
 (existing maritime limit)  
 and  
 1° 16'·678N., 103° 47'·679E.  
 (existing maritime limit)  
 1° 16'·053N., 103° 46'·309E.  
 (a) above  
 1° 16'·255N., 103° 46'·553E.

legend, **PASIR PANJANG FAIRWAY**, centred on:

**Chart 4035** [ previous update 1873/12 ] WGS84 DATUM

Delete limit of fairway, pecked line, joining:

- 1° 15'·391N., 103° 45'·677E.  
 (existing limit)  
 (a) 1° 15'·938N., 103° 46'·500E.  
 1° 16'·449N., 103° 46'·803E.  
 1° 16'·230N., 103° 47'·112E.  
 1° 16'·170N., 103° 47'·070E.  
 1° 16'·166N., 103° 47'·080E.  
 (existing maritime limit)  
 and  
 1° 16'·341N., 103° 47'·181E.  
 (existing maritime limit)  
 1° 16'·578N., 103° 46'·846E.  
 (existing maritime limit)  
 and  
 1° 16'·678N., 103° 47'·679E.  
 (existing maritime limit)  
 1° 16'·053N., 103° 46'·309E.  
 (a) above  
 1° 16'·255N., 103° 46'·553E.

legend, **PASIR PANJANG FAIRWAY**, centred on:

**Chart 4036** [ previous update 119/12 ] WGS84 DATUM


Insert limit of anchorage area, pecked line, joining:

- 1° 12'·069N., 103° 44'·200E.  
 (W border)  
 1° 12'·244N., 103° 44'·409E.  
 (a) 1° 12'·147N., 103° 44'·546E.  
 (existing limit)  
 and  
 1° 11'·990N., 103° 44'·200E.  
 (W border)  
 (b) 1° 11'·898N., 103° 44'·247E.  
 (existing limit)  
 and  
 1° 11'·368N., 103° 44'·513E.  
 (existing limit)  
 1° 11'·805N., 103° 45'·038E.

V  
**EXTRACT OF ADMIRALTY NOTICES TO MARINERS  
 FOR DUAL BADGED CHARTS**

**2363\* SINGAPORE – Sultan Shoal to Changi Naval Base East-south-eastwards – Anchorage areas. Restricted areas. Depths. Cautionary notes. Legends. Fairways. (continued)**

(existing limit)

Delete legend, **Raffles Petroleum** , centred on: 1° 11'·876N., 103° 44'·574E.  
 former limit of anchorage area, pecked line, joining: (a) above  
 (b) above

**Chart 4038** [ *previous update 1873/12* ] WGS84 DATUM

Insert the accompanying block, showing amendments to anchorage areas and fairway, centred on: 1° 15'·06N., 103° 38'·05E.

**Chart 4042** [ *previous update 2044/12* ] WGS84 DATUM

Insert the accompanying block, showing amendments to anchorage areas, restricted area and depths, centred on: 1° 18'·50N., 104° 03'·70E.

**Chart 4043** [ *previous update 2044/12* ] WGS84 DATUM

Insert the accompanying block A, showing amendments to anchorage areas and restricted areas, centred on: 1° 17'·68N., 103° 59'·92E.  
 the accompanying block B, showing amendments to anchorage areas, restricted area and depths, centred on: 1° 18'·50N., 104° 03'·70E.  
 Replace existing note with the accompanying note, **RESTRICTED AREAS**, centred on: 1° 28'·15N., 104° 09'·25E.

**Chart 4044** [ *previous update 1115/12* ] WGS84 DATUM

Insert the accompanying block, showing amendments to restricted area and depths, centred on: 1° 19'·30N., 104° 02'·20E.

**2364\* SINGAPORE – Sembawang – Sembawang Shipyard – Dredged depth.**

Source: Maritime and Port Authority of Singapore

**Chart 4044 (plan C Sembawang)** [ *previous update 2363/12* ] WGS84 DATUM

Amend dredged depth to, *11.5m (2011)*, centred on: 1° 28'·103N., 103° 49'·913E.

**2365\* MALAYSIA – Peninsular Malaysia, West Coast – Pelabuhan Tanjung Pelepas – Buoyage.**

Source: Maritime and Port Authority of Singapore

**Chart 4038 (plan B, Pelabuhan Tanjung Pelepas)** [ *previous update 2363/12* ] WGS84 DATUM

Move  **Q.R. No 14**, from: 1° 20'·86N., 103° 32'·68E.  
 to: 1° 20'·78N., 103° 32'·62E.

Delete  **Fl.Y.3s SP3** 1° 21'·22N., 103° 32'·54E.

**Chart 4038** [ *previous update 2363/12* ] WGS84 DATUM

Move  **Q.R. No 14m**, from: 1° 20'·86N., 103° 32'·68E.  
 to: 1° 20'·78N., 103° 32'·62E.





Delete  **Fl.Y.3s SP3** 1° 21'·22N., 103° 32'·54E.

V  
**EXTRACT OF ADMIRALTY NOTICES TO MARINERS  
 FOR DUAL BADGED CHARTS**

**2367\* SINGAPORE – Tanjong Pagar Terminal North-eastwards and Marina South Pier South-south-eastwards – Mooring buoys. Wreck. Legend.**

Source: Maritime and Port Authority of Singapore

**Chart 4037** [ *previous update 2060/12* ] WGS84 DATUM

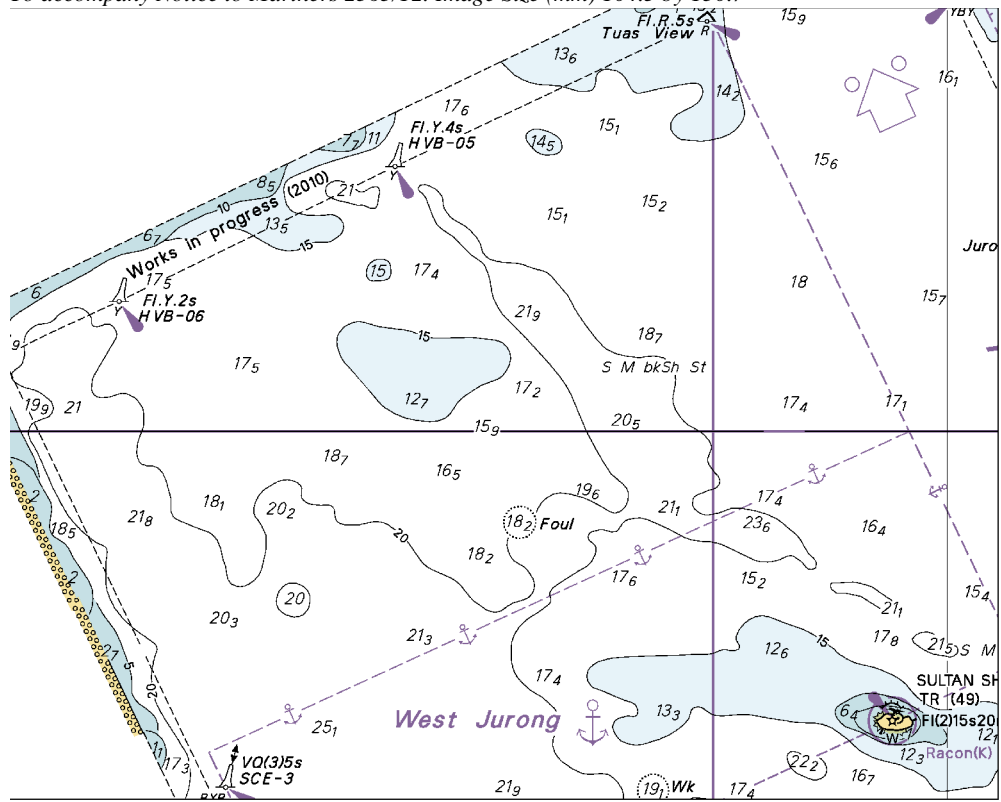
Insert	 <b>MSW-1</b>	1° 16'·263N., 103° 51'·250E.
	 <b>MSW-2</b>	1° 16'·212N., 103° 51'·292E.
Replace	 <b>Wk</b> with  <b>Wk</b>	1° 16'·210N., 103° 52'·060E.
Amend	legend to, <b>EASTERN CORRIDOR</b> , centred on:	1° 14'·700N., 103° 54'·235E.

**Chart 4041** [ *previous update New Edition 03/05/2012* ] WGS84 DATUM

Replace	 <b>Wk</b> with  <b>Wk</b>	1° 16'·20N., 103° 52'·05E.
---------	--	----------------------------

-----  
 Updated to Admiralty Notices to Mariners Edition No. 22 of 2012 dated 31<sup>st</sup> May 2012.

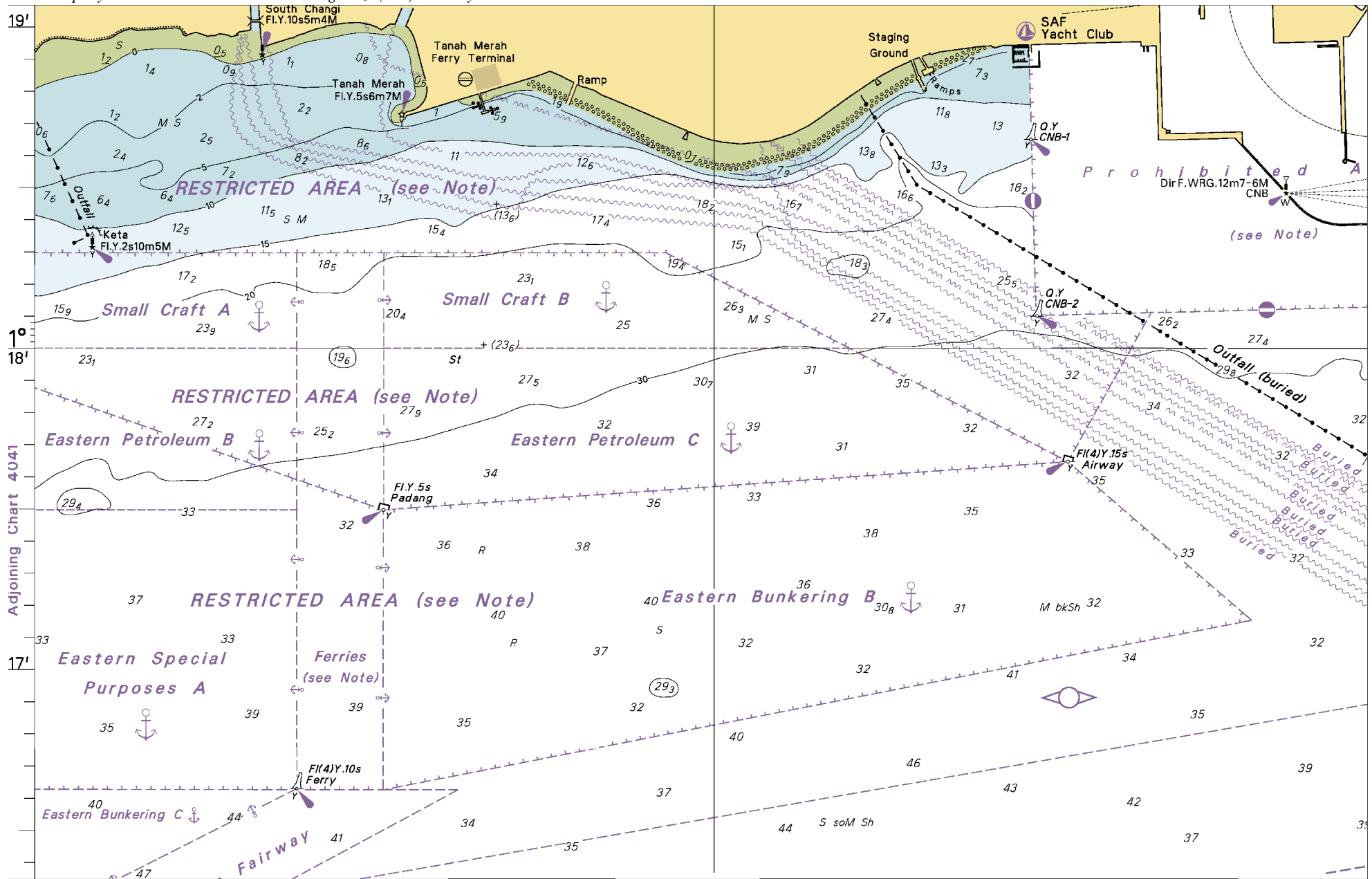
To accompany Notice to Mariners 2363/12. Image Size (mm) 104.5 by 130.7



Block for Chart No 4038

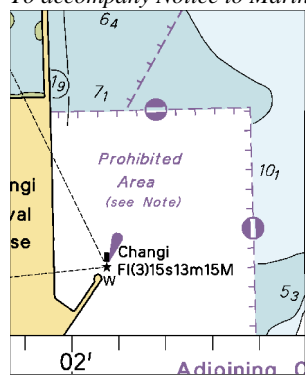






Block A for Chart No 4043

To accompany Notice to Mariners 2363/12. Image Size (mm) 48.1 by 38.9



Block for Chart No 4044

*To accompany Notice to Mariners 2363/12*

*On Chart 4043*

RESTRICTED AREAS

RESTRICTED AREAS (1°18'·5N 103°58'·9E)  
(1°20'·5N 104°02'·4E) (1°22'·6N 104°00'·6E)

Entry into these areas is prohibited to all vessels over 15 metres high.

RESTRICTED AREA (1°17'·9N 103°58'·9E)

Entry into this area is prohibited to all vessels over 30 metres high.

RESTRICTED AREA (1°17'·2N 103°59'·0E)

Entry into this area is prohibited to all vessels over 49 metres high.

## MPA ENC DISTRIBUTORS

CONTACT PERSON/ DESIGNATION	ADDRESS	TELEPHONE/FAX NO./EMAIL/WEBSITE
ChartWorld GmbH  ChartWorld Asia Pacific Pte Ltd.	Ruhrstrasse 90, 22761 Hamburg, Germany  Frontech Centre 07-01, 15 Jalan Kilang Barat, Singapore 159357	Tel. No.: +49 40 853 58 6942 Fax No.: +49 40 853 58 6949 Email: <a href="mailto:sales@chartworld.com">sales@chartworld.com</a>  Tel No.: +65 65133500  Website : <a href="http://www.chartworld.com">http://www.chartworld.com</a>
DPM (Singapore) Pte Ltd	1 Maritime Square, #09-72 HarbourFront Centre, Singapore 099253	Tel. No.: +65 6270 4060 Fax No.: +65 6276 3858 Email: <a href="mailto:sales@dpmsingapore.com.sg">sales@dpmsingapore.com.sg</a> Website: <a href="http://www.dpmsingapore.com.sg">http://www.dpmsingapore.com.sg</a>
Maritime Information Systems (MARIS)  Maritime Information Systems AS (MARIS)	52, Telok Blangah Road #01-06, Telok Blangah House, Singapore 058809  Danholmen 25, 3128 Notteroy, Norway	Tel. No.: +65 6276 1472 Fax No.: +65 6276 1473 Email: : <a href="mailto:support@maris.sg">support@maris.sg</a> Website: <a href="http://www.maris.no">http://www.maris.no</a>  Tel. No.: +47 33 30 42 50 Fax No.: +47 33 30 42 51 Email: : <a href="mailto:sales@maris.no">sales@maris.no</a> Website: <a href="http://www.maris.no">http://www.maris.no</a>
Motion Smith	15 Jalan Kilang Barat #08-01/05 Frontech Centre, Singapore 159357	Tel. No.: +65 6220 5098 Fax No.: +65 6225 4902 Email: <a href="mailto:sales@motsmith.com">sales@motsmith.com</a> Website: <a href="http://www.motsmith.com">http://www.motsmith.com</a>
Transas Marine Pacific Pte Ltd	Cyber Centre 16 & 18 Jalan Kilang Barat Singapore 159358	Tel. No.: +65 6271 0200 Fax No.: +65 6271 7300 Email: <a href="mailto:dominic@transas.com.sg">dominic@transas.com.sg</a> Website: <a href="http://www.transas.com.sg">http://www.transas.com.sg</a>
Vector Services Pte Ltd	196 Pandan Loop, #06-29 Pantech Business Hub Singapore 128384	Tel. No.: +65 6777 3602 Fax No.: +65 6777 9203 Email: <a href="mailto:kwchoy@pacific.net.sg">kwchoy@pacific.net.sg</a>
Japan Hydrographic Association Electronic Charts Division	Daiichi Sogo Bldg, 6F 1-6-6, Hanedakuko, Ota-ku Tokyo 144-0041, Japan	Tel. No.: +81 3 5708 7093 Fax No.: +81 3 5708 7094 Email: <a href="mailto:shimizu-6kj@jha.jp">shimizu-6kj@jha.jp</a> Website: <a href="http://www.jha.or.jp/en/jha/">http://www.jha.or.jp/en/jha/</a>
Jeppesen Norway AS	P.O Box 212 , N-4371 Egersund, Norway	Tel No.: +47 51 46 4700 Fax No: +47 51 46 4701 Email: <a href="mailto:license.marine@jeppesen.com">license.marine@jeppesen.com</a> Website : <a href="http://www.jeppesen.com/marine">http://www.jeppesen.com/marine</a>
PRIMAR STAVANGER	Lervigsveien 36, P.O Box 60, N-4001 Stavanger, Norway	Tel. No.: +47 51 93 9500 Fax No.: +47 51 93 9501 Email: <a href="mailto:sales@ecc.no">sales@ecc.no</a> Website : <a href="http://www.primar.no">http://www.primar.no</a>
The United Kingdom Hydrographic Office	Admiralty Way, Taunton, Somerset, TA1 2DN United Kingdom	Tel. No.: +44 1823 33 7900 Fax No.: +44 1823 28 4077 Emails: <a href="mailto:ENCs.SalesReports@ukho.gov.uk">ENCs.SalesReports@ukho.gov.uk</a> Website: <a href="http://www.ukho.gov.uk">http://www.ukho.gov.uk</a>

**Chart Agents for the Maritime and Port Authority of Singapore**  
**Nautical Charts and Publications**

Please approach any of the appointed chart agent to purchase the Singapore Nautical Charts and Publications.

<b>CHART AGENT</b>	<b>ADDRESS</b>	<b>TELEPHONE/FAX NO./EMAIL/WEBSITE</b>
DPM (Singapore) Pte Ltd	1 Maritime Square, #09-72 HarbourFront Centre, Singapore 099253	Tel. No.: +65 6270 4060 Fax No.: +65 6276 3858 Email: sales@dpmsingapore.com.sg Website: <a href="http://www.dpmsingapore.com.sg">http://www.dpmsingapore.com.sg</a>
E.W. Liner Charts & Publications Pte Ltd	102F, Pasir Panjang Road, #08-01, Citilink Warehouse Complex, Singapore 118530	Tel. No.: +65 6323 0773 Fax No.: +65 6323 0775 Email: ewliner@singnet.com.sg Website: <a href="http://www.ewliner.com">http://www.ewliner.com</a>
Motion Smith	15 Jalan Kilang Barat #08-01/05 Frontech Centre Singapore 159357	Tel. No.: +65 6220 5098 (After office hours:+65 8163 9993) Fax No.: +65 6225 4902 Email: sales@motsmith.com Website: <a href="http://www.motsmith.com">http://www.motsmith.com</a>

## HYDROGRAPHIC NOTE - Instructions

1. Mariners are requested to notify the Chief Hydrographer, Maritime and Port Authority of Singapore, when new or suspected dangers to navigation are discovered, changes are observed in aids to navigation or where corrections to nautical publications may be necessary. Reports, which cannot be confirmed or are lacking in certain details should not be withheld.
2. Any ambiguities of time, positioning and depth should be stressed and any firm expectation of being able to check the information provided on a following voyage should be mentioned.
3. Mariners using satellite position fixing systems, eg. GPS, should provide details of equipment and datum used (where applicable). Where bearings (true or magnetic) are taken visually or by radar to fix a position, it should include more than two objects in order to provide a check on its accuracy. A position may also be defined by bearing and distance from a conspicuous object eg. beacon, lighthouse etc.
4. The note should include a tracing or a digital image of the chart used and the details should be clearly marked.
5. Echo sounders frequently register greater depths than the advertised maximum depth for the equipment, eg. a trace appearing at 50 metres may be in fact be 550 metres or even 1050 metres for equipment whose maximum depth is 500 metres. Erroneous depths caused by 2nd transmission error can usually be recognised by the following:
  - (a) the tracing being weaker than normal for the depth registered,
  - (b) the trace appearing to pass through the transmission line,
  - (c) the feathery nature of the trace.
6. Upon receipt of a hydrographic note, a Notice to Mariners may be issued. The sender's vessel or name is quoted as the source unless the same information is also received in foreign Notices to Mariners.
7. Reports of shoals, uncharted dangers and defects in aids to navigation may also be made to the appropriate Singapore Port Operations Control Centre on VHF Channels 10, 12, 14, 68 or 73.

## HYDROGRAPHIC NOTE

To:

Chief Hydrographer  
Maritime and Port Authority of Singapore  
460 Alexandra Road PSA Building #20-00  
Singapore 119963

Tel : (65) 6375 1227  
Fax : (65) 6278 7646  
Email : [hydrographic@mpa.gov.sg](mailto:hydrographic@mpa.gov.sg)

### **Sender's Contact Details** :

Date : .....

Name of Vessel : .....

Address of Sender : .....

Tel : ..... Fax : .....

Email : .....

### **Nature of Observation** :

General Location : .....

Subject : .....

Position : Lat. .... Long. ....

Charts Used : .....

Date & Time of Observation : .....

Details : .....

.....

.....

Attachment : .....

### **Equipment Used** :

Type of Position Fixing : ..... GPS / DGPS ..... Others : .....

Type of Echo Sounder : .....

Name and Signature : .....

Ship's/Company's Stamp : .....