



## SINGAPOREAN NOTICES TO MARINERS

---

SECTION	CONTENT	Page
I	Index of Charts & Publications	1
II	New Publications	6
	Notices to Mariners and Chart Corrections	8
	Temporary and Preliminary Notices	9
III	Navigational Information	10
	Amendments to Publications	11
IV	Reprint of Radio Navigational Warnings	13
V	Extract of Admiralty Notices to Mariners for Dual Badged Charts	14

---

**The monthly Notices to Mariners contain corrective information affecting charts published by the Hydrographic Department, Maritime and Port Authority of Singapore. The information contained in these Notices should be updated on the charts affected. Notices under Section II apply only to the particular Singaporean Chart(s) indicated.**

---

Mariners are requested to notify the Chief Hydrographer, Maritime and Port Authority of Singapore, immediately on the discovery of new dangers or suspected dangers to navigation and of changes or defects in aids to navigation. See Hydrographic Note on back page.

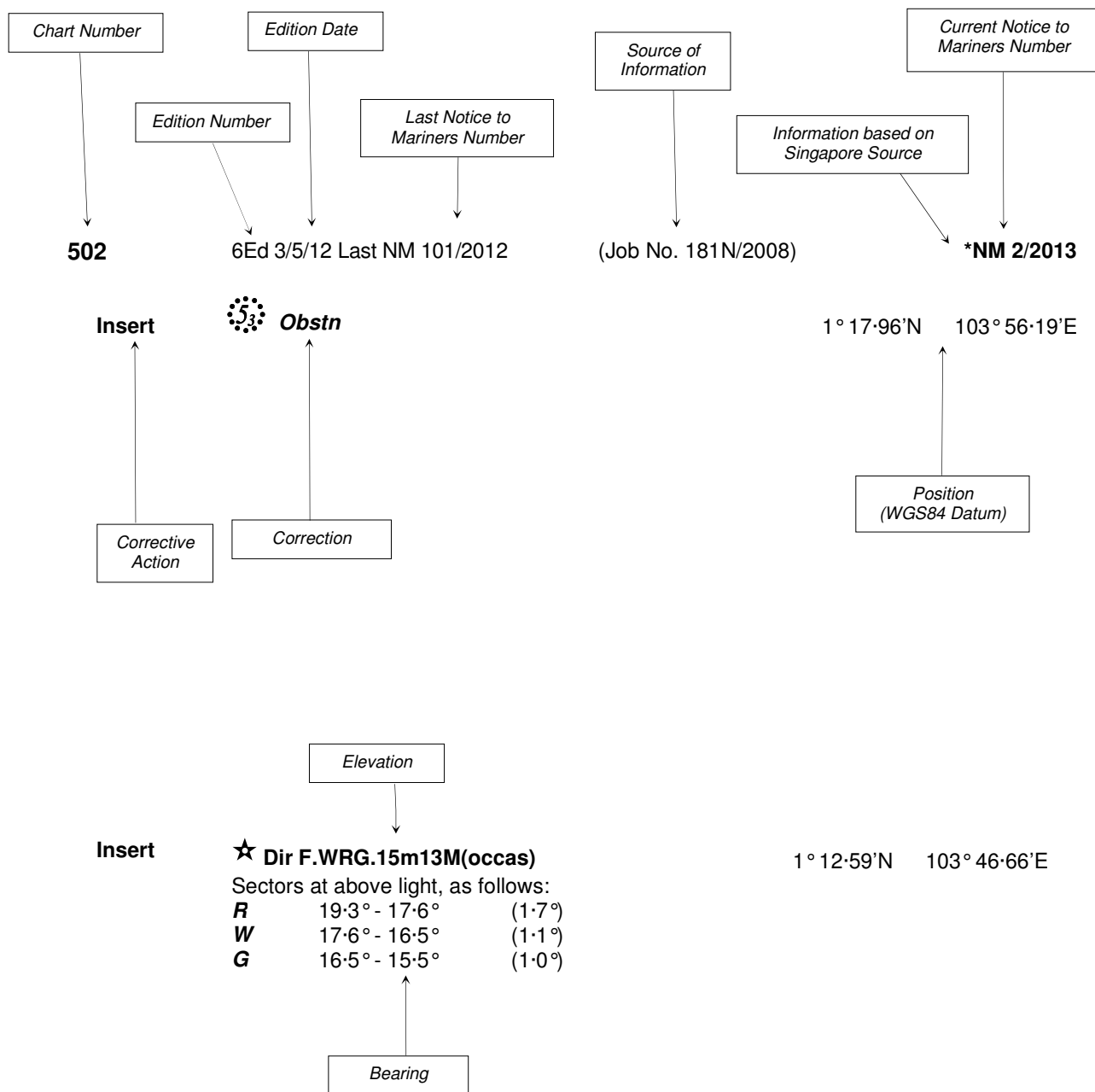
The monthly Singaporean Notices to Mariners can be accessed directly from the MPA website:  
[www.mpa.gov.sg/sites/port\\_and\\_shipping/circulars\\_and\\_notices/singapore\\_notices\\_to\\_mariners\(ntm\).page](http://www.mpa.gov.sg/sites/port_and_shipping/circulars_and_notices/singapore_notices_to_mariners(ntm).page)

This service is offered free of charge.

Hydrographic Department  
Maritime and Port Authority of Singapore  
460 Alexandra Road  
#20-00 PSA Building  
Singapore 119963  
Tel: (65) 6375 1227  
Fax: (65) 6278 7646

## EXPLANATION OF FORMAT

The elements of a typical chart correction are explained below.



Notes:

- a) Notice to Mariners number followed by:  
**T** indicates a Temporary Notice (eg. **\*NM 3T/2013**).  
**P** indicates a Preliminary Notice (eg. **\*NM 4P/2013**).
- b) Bearings are true reckoned clockwise from 000° to 359°; those relating to lights are from seaward.
- c) Heights and elevations are above Mean High Water Springs.

I  
INDEX OF CHARTS AND PUBLICATIONS

INDEX OF AFFECTED CHARTS

DESCRIPTION	NOTICE NO.	PAGE NO.
Index of Singaporean Charts	-	3
Index of Dual Badged Charts	-	4
Index of Singapore Electronic Navigational Chart (ENC)	-	5
New Edition Singaporean Charts	-	6
New Edition Dual Badged Charts	-	7
Singaporean Chart GSP1/SP1	*58, *59, *60	8
Singaporean Chart 200	61	8
Singaporean Chart 201	61	8
Temporary and Preliminary Notices	62T	9
Singapore Port Marine Notices	*63	10
Singaporean Print-On-Demand (POD) Charts	*64	10
Amendments to Publications	*65	11, 12
Reprint of Radio Navigational Warnings	-	13
Extract of Admiralty Notices to Mariners for Dual Badged Charts	-	14 to 16
Singapore Electronic Navigational Chart (ENC) Distributors	-	17
Chart Agents for the Maritime and Port Authority of Singapore Nautical Charts and Publications	-	18

\*Denotes information are based on Singaporean source.

I  
**INDEX OF CHARTS AND PUBLICATIONS**

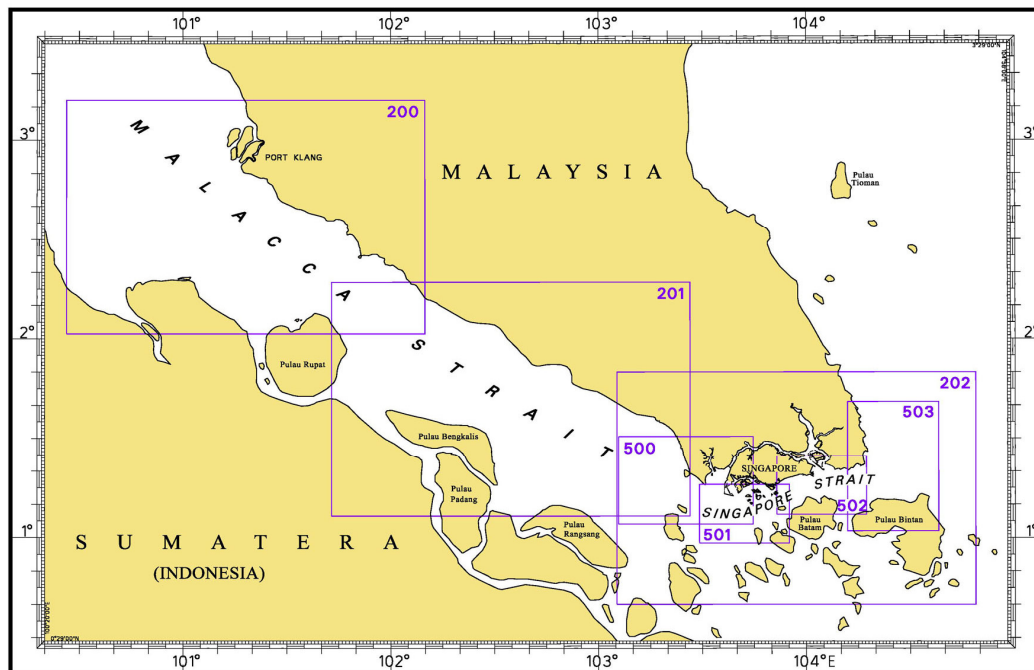
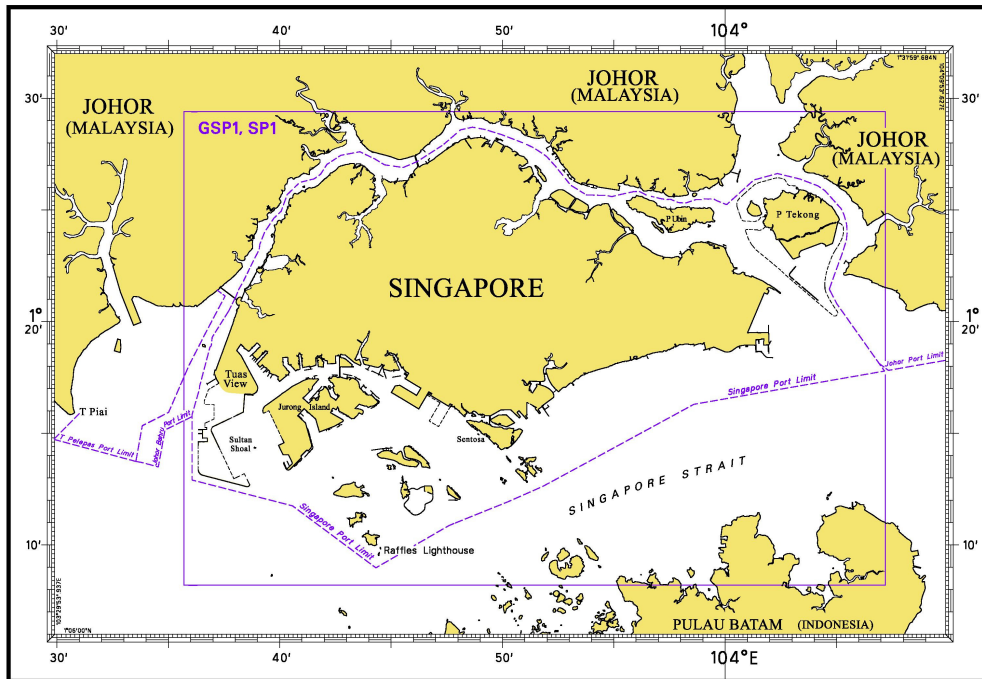
**INDEX OF NOTICES**

NOTICE NO.	DESCRIPTION	PAGE NO.
-	Index of Singaporean Charts	3
-	Index of Dual Badged Charts	4
-	Index of Singapore Electronic Navigational Chart (ENC)	5
-	New Edition Singaporean Charts	6
-	New Edition Dual Badged Charts	7
*58, *59, *60	Singaporean Chart GSP1/SP1	8
61	Singaporean Chart 200	8
61	Singaporean Chart 201	8
62T	Temporary and Preliminary Notices	9
*63	Singapore Port Marine Notices	10
*64	Singaporean Print-On-Demand (POD) Charts	10
*65	Amendments to Publications	11, 12
-	Reprint of Radio Navigational Warnings	13
-	Extract of Admiralty Notices to Mariners for Dual Badged Charts	14 to 16
-	Singapore Electronic Navigational Chart (ENC) Distributors	17
-	Chart Agents for the Maritime and Port Authority of Singapore Nautical Charts and Publications	18

\* Denotes information are based on Singaporean source.

# I INDEX OF CHARTS AND PUBLICATIONS

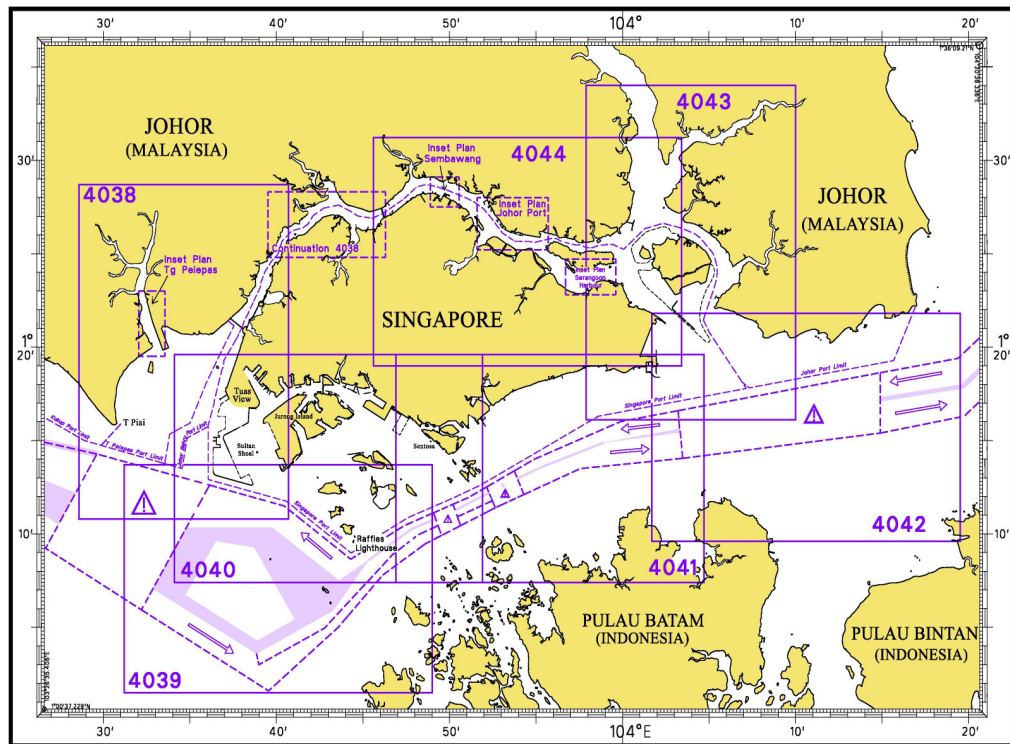
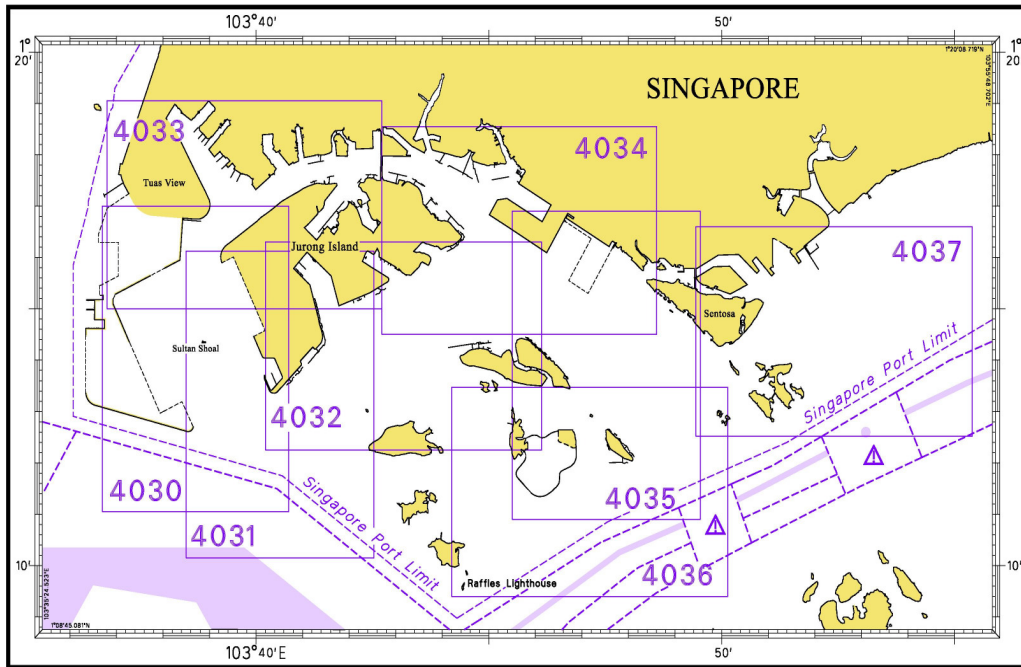
## INDEX OF SINGAPOREAN CHARTS



Notes:  
Updated SINGAPOREAN Charts are available through our Print-On-Demand (POD) Chart Service. For more information, refer to Section III – Navigational Information. These charts can be purchased from our authorised Chart Agents.

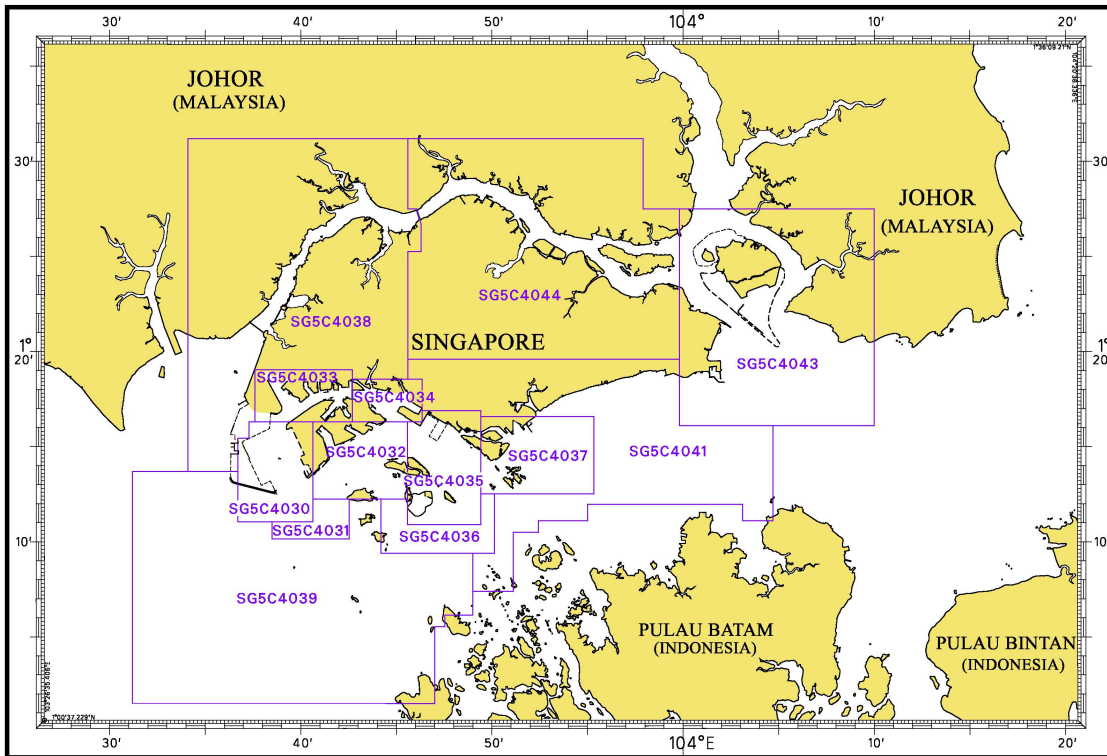
# I INDEX OF CHARTS AND PUBLICATIONS

## INDEX OF DUAL BADGED CHARTS



# I INDEX OF CHARTS AND PUBLICATIONS

## INDEX OF SINGAPORE ELECTRONIC NAVIGATIONAL CHART (ENC)



## COVERAGE OF SINGAPORE ELECTRONIC NAVIGATIONAL CHART (ENC)

ENC Name	ENC Coverage	ENC Edition
SG5C4030	West Jurong Anchorages and Temasek Fairway	5 <sup>th</sup> Edition (3/05/2012)
SG5C4031	Western Approaches to Jurong Island	5 <sup>th</sup> Edition (3/05/2012)
SG5C4032	Sinki Fairway	7 <sup>th</sup> Edition (3/05/2012)
SG5C4033	Tuas Bay, West Jurong Channel and Pesek Basin	5 <sup>th</sup> Edition (3/05/2012)
SG5C4034	East Jurong Channel, Pasir Panjang Terminal and West Keppel Fairway	11 <sup>th</sup> Edition (11/04/2013)
SG5C4035	Western Anchorages, Jong Fairway and Cruise Bay	13 <sup>th</sup> Edition (25/04/2013)
SG5C4036	Raffles Lighthouse to The Sisters	6 <sup>th</sup> Edition (3/05/2012)
SG5C4037	Keppel Harbour, Tanjong Pagar Terminal and Approaches	7 <sup>th</sup> Edition (25/04/2013)
SG5C4038	Johor Strait – Western Part	5 <sup>th</sup> Edition (3/05/2012)
SG5C4039	Western Approaches to Main Strait	5 <sup>th</sup> Edition (3/05/2012)
SG5C4041	Pulau Sebarok to Changi	7 <sup>th</sup> Edition (9/05/2013)
SG5C4043	Kuala Johor and Sungai Johor	8 <sup>th</sup> Edition (16/08/2012)
SG5C4044	Johor Strait – Eastern Part	8 <sup>th</sup> Edition (16/08/2012)

## II NEW PUBLICATIONS

### NEW EDITION SINGAPOREAN CHARTS PUBLISHED ON 16<sup>TH</sup> MAY 2013

**Chart Number** : GSP1  
**Title** : Anchorages and Aids to Navigation (with area reference)  
**Coverage** : Lat 01° 08' 20 N 01° 29' 40 N  
 Long 103° 35' 70 E 104° 07' 20 E  
**Scale** : 1: 60 000  
**Date Published** : 16<sup>th</sup> May 2013  
**Size of Chart** : 973·9 x 651·2 mm  
**Descriptions** : This new edition includes new submarine cables, changes to depth contours from the latest surveys in the vicinity of Tuas and Eastern Anchorages, Pasir Panjang and Tanjong Pagar Terminals, East and West Jurong Channels, Jong Fairway, Approaches to Pulau Sebarok, Sembawang Shipyard, around Pulau Tekong and South of St John Island.

The existing chart of the same number published on 3<sup>rd</sup> May 2012 is superseded.

---

**Chart Number** : SP1  
**Title** : Anchorages and Aids to Navigation  
**Coverage** : Lat 01° 08' 20 N 01° 29' 40 N  
 Long 103° 35' 70 E 104° 07' 20 E  
**Scale** : 1: 60 000  
**Date Published** : 16<sup>th</sup> May 2013  
**Size of Chart** : 973·9 x 651·2 mm  
**Descriptions** : This new edition includes new submarine cables, changes to depth contours from the latest surveys in the vicinity of Tuas and Eastern Anchorages, Pasir Panjang and Tanjong Pagar Terminals, East and West Jurong Channels, Jong Fairway, Approaches to Pulau Sebarok, Sembawang Shipyard, around Pulau Tekong and South of St John Island.

The existing chart of the same number published on 3<sup>rd</sup> May 2012 is superseded.

---

## II NEW PUBLICATIONS

### NEW EDITION DUAL BADGED CHART PUBLISHED ON 9<sup>TH</sup> MAY 2013

**Chart Number** : 4040  
**Title** : Singapore, Indonesia and Malaysia  
 Tuas View to Pulau Sakijang Bendera  
 (S. John's Island)  
**Coverage** : Lat 01° 07'·40 N 01° 19'·60 N  
 Long 103° 34'·10 E 103° 51'·90 E  
**Scale** : 1: 30 000  
**Date Published** : 9<sup>th</sup> May 2013  
**Size of Chart** : 1100·6 x 749·5 mm  
**Descriptions** : This new edition includes changes to depths from the latest surveys in the vicinity of Tuas Anchorages, East and West Jurong Channel, East Keppel, Jong and Temasek Fairways, approaches to Tanjong Pagar Terminal, Pasir Panjang Terminal and Pulau Sebarok.

The existing chart of the same number published on 3<sup>rd</sup> May 2012 is superseded.


---

**Chart Number** : 4041  
**Title** : Singapore and Indonesia  
 Pulau Sebarok to Changi  
**Coverage** : Lat 01° 07'·40 N 01° 19'·60 N  
 Long 103° 46'·90 E 104° 04'·70 E  
**Scale** : 1: 30 000  
**Date Published** : 9<sup>th</sup> May 2013  
**Size of Chart** : 1100·6 x 749·5 mm  
**Descriptions** : This new edition includes changes to depths from the latest surveys in the vicinity of East Keppel Fairway, Eastern Anchorages, East Keppel and Jong Fairways, Eastern Corridor and Marina South, approaches to Pulau Sebarok.

The existing chart of the same number published on 3<sup>rd</sup> May 2012 is superseded.

---

**II**  
**NOTICES TO MARINERS AND CHART CORRECTIONS**

<b>GSP1/SP1</b>	8 Ed 16/05/13	(Job No. 39N/2013)	<b>*NM 58/2013</b>
<b>Insert</b>	 <b>Wk</b>		1°15'·87N 103°51'·78E
		(HD/HE025/23 & 24/2013)	<b>*NM 59/2013</b>
<b>Insert</b>	 <b>Fl.Y.4s TK-MB3 (sync)</b>		1°22'·15N 104°02'·52E
	 <b>Fl.Y.4s TK-MB4 (sync)</b>		1°22'·27N 104°02'·38E
		(HD/HE025/49/2013)	<b>*NM 60/2013</b>
<b>Insert</b>	'(collapsed)' at Banyan Beacon		1°13'·35N 103°41'·58E
		(HD/HE025/50/2013)	
<b>Insert</b>	 <b>Fl(2)10s Banyan</b>		1°13'·32N 103°41'·59E

<b>200</b>	3 Ed 22/09/11 Last NM 4/2013	(Admiralty Notice No. 21/2243/2013)	<b>NM 61/2013</b>
<b>Insert</b>	pier, single firm line, joining:		2°15'·58N 102°05'·86E 2°15'·20N 102°06'·23E

<b>201</b>	4 Ed 7/10/10 Last NM 20/2013	(Admiralty Notice No. 21/2243/2013)	<b>NM 61/2013</b>
<b>Insert</b>	pier, single firm line, joining:		2°15'·58N 102°05'·86E 2°15'·20N 102°06'·23E

**II**  
**TEMPORARY AND PRELIMINARY NOTICES**

**(NM 62T/2013)      Tompok Utara light beacon missing.**

Mariners are advised that the Tompok Utara Light Beacon at position Latitude 1°27.76' N Longitude 104°27.02' E was missing.  
A temporary isolated danger buoy has been established at position Latitude 1°27.78' N Longitude 104°27.19' E with light characteristics Fl(2)10s.

**Remark :**                      Mariners are advised to navigate with caution when in the vicinity.

**Charts affected :**        202 and 503

**Source :**                      DB67/9/2013

---

### III NAVIGATIONAL INFORMATION

**\*(NM 63/2013) SINGAPORE PORT MARINE NOTICES**

The following Port Marine Notices have been shortlisted, as they would be of particular interest to mariners.

These notices can be accessed directly from MPA website:  
[www.mpa.gov.sg/sites/port\\_and\\_shipping/circulars\\_and\\_notices/port\\_marine\\_notices.page](http://www.mpa.gov.sg/sites/port_and_shipping/circulars_and_notices/port_marine_notices.page)

<b>PMN No.</b>	<b>Subject</b>
59/2013	Construction of Solid Handling Pier and protection bund at Ayer Chawan Basin, Jurong Island.
60/2013	Subsea pipeline repair at Shell Bukom SBM.
62/2013	Submarine cable repair off Pulau Busing, Selat Sinki.
64/2013	Dredging works off Pasir Panjang Terminal.
65/2013	Subsea rock installation work off Shell Bukom SBM.
66/2013	Pipeline removal at Ayer Chawan Basin.
67/2013	Dredging works at Northern Tuas Basin.
68/2013	Repair work at Tuas Explosive Jetty, Tuas View.

**\*(NM 64/2013) SINGAPOREAN PRINT-ON-DEMAND (POD) CHARTS**

Print-On-Demand (POD) Charts are the most up-to-date paper nautical charts printed for navigational use. These nautical charts are produced in accordance with the International Hydrographic Organisation (IHO) chart specifications. These official nautical charts are continually updated to the latest Notices to Mariners before they are printed and sold to users.

These POD Charts include 200, 201, 202, 500, 501, 502 and 503.

#### **BENEFITS TO OUR CUSTOMERS**

##### **Convenience**

Customers need not make numerous hand corrections to the nautical charts before use. In addition the updated POD Charts are more accurate and reliable than offset printed charts with hand corrections.

##### **Clarity**

Clarity in the presentation of updated information as compared to lithographic printed charts, where in some cases there are several overlapping corrections over existing information.

##### **Coverage**

The POD Charts cover the Malacca and Singapore Straits, from One Fathom Bank to Horsburgh Lighthouse.

### III AMENDMENTS TO PUBLICATIONS

#### \*(NM 65/2013) UPDATING OF PUBLICATION "SINGAPORE PORT INFORMATION 2012/2013"

1. Page 104

#### DEPTHS OF NAVIGATIONAL CHANNELS AND FAIRWAYS

Replace the following:

LOCATIONS	DEPTHS (m)		REMARKS
	Delete	Insert	
East Johor Strait – Eastern Buoy to Malang Papan Beacon	12.0	11.9	

Source: HD/HY Code N00107412

Insert the following:

LOCATIONS	DEPTHS (m)	REMARKS
Pesek Basin	10.1	-
	12.1	-

Source: HD/HY Code E00102912 and E00104806

2. Page 129

Delete the following:

Name of Beacon/Buoy	Position Lat. N Long. E Deg Min	Structure Colour & Shape	Light Characteristic	Owner
Helios 2 Buoy	01°13.980' 103°40.380'	Yellow pillar	Fl.Y.6s	Samsung C&T Corporation
Helios 3 Buoy	01°13.664' 103°40.529'	Yellow pillar	Fl.Y.8s	Helios Terminal Corporation

Source: HD/HE025/53 & 54/2013

3. Page 131

#### CHARACTERISTICS OF AIDS TO NAVIGATION – BANYAN BASIN

Delete the following:

Name of Beacon/Buoy	Position Lat. N Long. E Deg Min	Structure Colour & Shape	Light Characteristic	Owner
BB2 Buoy	01°15.397' 103°41.314'	Yellow pillar	Fl.Y.8s	SLNG
BB3 Buoy	01°15.257' 103°41.353'	Yellow pillar	Fl.Y.6s	SLNG

Source: HD/HE025/51 & 52/2013

**III**  
**AMENDMENTS TO PUBLICATIONS**

\*(NM 65/2013) UPDATING OF PUBLICATION "SINGAPORE PORT INFORMATION 2012/2013"  
(continued)

4. Page 136

**CHARACTERISTICS OF AIDS TO NAVIGATION - SINKI FAIRWAY**

Insert the following:

<b>Name of Beacon</b>	<b>Position Lat. N Long. E Deg Min</b>	<b>Structure, colour &amp; Shape</b>	<b>Light Characteristic</b>	<b>Owner</b>
<b>Banyan Beacon</b>	<b>01°13.345' 103°41.583'</b>	<b>Beacon collapsed</b>	<b>-</b>	<b>MPA</b>
<b>Banyan Buoy</b>	<b>01°13.320' 103°41.593'</b>	<b>Isolated Danger buoy</b>	<b>Fl(2)10s</b>	<b>MPA</b>

Source: HD/HE025/49 & 50/2013

5. Page 182

**DOCKS AND REPAIR BERTHS**

**TUAS-SEMCORP MARINE TUAS SHIPYARD (1°15.1'N 103°36.6'E)**

Insert the following:

<b>Berth</b>	<b>Length of Berth</b>	<b>Depth Alongside (Year Surveyed)</b>	<b>Controlling Depth In Approaches</b>
<b>YST 09</b>	<b>363m</b>	<b>8.5m (2013)</b>	<b>-</b>
<b>YST 10</b>	<b>363m</b>	<b>8.7m (2013)</b>	<b>-</b>
<b>YST 11</b>	<b>363m</b>	<b>13.9m (2013)</b>	<b>-</b>
<b>YST 12</b>	<b>363m</b>	<b>8.7m (2013)</b>	<b>-</b>

Source: HD/HY Code G00100813

**IV**  
**REPRINT OF RADIO NAVIGATIONAL WARNINGS**

The following Radio Navigational Warnings have been shortlisted, as they would be of particular interest to mariners.

TT071

REPORT OF A CAPSIZED SAMPAN AT APPROXIMATE POSITION 01°07'·08N 103°41'·93E.

TT100

REPORT OF TOMPOK UTARA BEACON MISSING.

TT173

VESSELS IN EAST JOHOR STRAIT ARE ADVISED TO NAVIGATE WITH CAUTION WHEN NEAR THE PROJECT AREAS OFF PULAU TEKONG, CHANGI AND MALANG PAPAN AS SHALLOW WATER AREAS EXIST. VESSELS ARE ADVISED TO KEEP LOOKOUT FOR TUGS AND BARGES NAVIGATING NEAR THE PROJECT AREAS AND PASSENGER FERRIES CROSSING BETWEEN CHANGI AND PULAU TEKONG AND VICINITY OF PASIR GUDANG.

TT961

VESSELS INTENDING TO CROSS THE TRAFFIC SEPARATION SCHEME(TSS) OR PRECAUTIONARY AREAS IN THE SINGAPORE STRAIT DURING THE HOURS OF DARKNESS ARE RECOMMENDED TO DISPLAY THE NIGHT SIGNALS CONSISTING OF 3 ALL-ROUND GREEN LIGHTS IN A VERTICAL LINE WITH EFFECT FROM 1ST JULY 2011 AT 010000UTC (0800SGT) AS DETAILED IN MARITIME AND PORT AUTHORITY OF SINGAPORE'S PORT MARINE CIRCULAR, 02 OF 2011 DATED 30 MAY 2011.

---

ISSUED BY SINGAPORE PORT OPERATIONS CONTROL CENTRE (as at 19<sup>th</sup> May 2013)

V  
**EXTRACT OF ADMIRALTY NOTICES TO MARINERS  
 FOR DUAL BADGED CHARTS**

These notices can also be accessed directly from UKHO Website:

[www.ukho.gov.uk/ProductsandServices/MaritimeSafety/Pages/NMPublic.aspx](http://www.ukho.gov.uk/ProductsandServices/MaritimeSafety/Pages/NMPublic.aspx)

**2007 SINGAPORE – Jurong Island – Helios Terminal North-westwards, Sembawang Shipyard, Felkin Spit Southwards, Serangoon Harbour Southwards, Pulau Tekong Kechil North-westwards and P. Malang Berdaun South-westwards – Buoyage. Depths. Obstructions.**

Source: Maritime and Port Authority of Singapore

**Chart 4030** [ previous update 1104/13 ] WGS84 DATUM

Delete  **FI(2)Y.4s Helios 1** 1° 13'·980N., 103° 40'·120E.

**Chart 4031** [ previous update 1104/13 ] WGS84 DATUM

Delete  **FI(2)Y.4s Helios 1** 1° 13'·980N., 103° 40'·120E.

**Chart 4038** [ previous update 1104/13 ] WGS84 DATUM

Delete  **FI(2)Y.4s Helios 1** 1° 13'·98N., 103° 40'·12E.

**Chart 4042** [ previous update 1108/13 ] WGS84 DATUM

Insert  **FI.Y.4s NEA - CHG** 1° 20'·71N., 104° 40'·98E.

**Chart 4043** [ previous update 1552/13 ] WGS84 DATUM

Insert  **FI.Y.4s NEA - CHG** 1° 20'·71N., 104° 40'·98E.

 **FI.Y.2s NEA - PTK** (a) 1° 25'·69N., 104° 00'·66E.

Delete depth  $12_6$  , adjacent to: (a) above

**Chart 4044 (plan A, Serangoon Harbour)** [ previous update 1552/13 ] WGS84 DATUM


Insert  **FI.Y.4s NEA - SRG** 1° 23'·195N., 103° 57'·222E.

**Chart 4044 (plan B, Pelabuhan Johor (Johor Port))** [ previous update 1552/13 ] WGS84 DATUM

Insert  **FI.Y.4s NEA - SLT** 1° 26'·900N., 103° 51'·800E.

**Chart 4044 (plan C, Sembawang)** [ previous update 1552/13 ] WGS84 DATUM

Insert  **Obstn** 1° 28'·102N., 103° 49'·759E.

Replace depth  $6_8$  with  **Obstn** 1° 28'·123N., 103° 49'·703E.

V  
**EXTRACT OF ADMIRALTY NOTICES TO MARINERS  
 FOR DUAL BADGED CHARTS**

**2007 SINGAPORE – Jurong Island – Helios Terminal North-westwards, Sembawang Shipyard, Felkin Spit Southwards, Serangoon Harbour Southwards, Pulau Tekong Kechil North-westwards and P. Malang Berdaun South-westwards – Buoyage. Depths. Obstructions. (continued)**

Source: Maritime and Port Authority of Singapore

**Chart 4044** [ *previous update 1552/13*] WGS84 DATUM

Insert	 <b>FI.Y.2s NEA - PTK</b>	(a)	1° 25'·69N., 104° 00'·66E.
	 <b>FI.Y.4s NEA - SLT</b>		1° 26'·90N., 103° 51'·80E.
	 <b>FI.Y.4s NEA - SRG</b>		1° 23'·20N., 103° 57'·22E.
Delete	depth <i>12<sub>6</sub></i> , adjacent to:	(a)	above

**2008 INDONESIA – Sumatera – East Coast – Pulau Batam to Pulau Bangka – Submarine cable.**

Source: Indonesian Notice 6/48/13

**Chart 4042** [ *previous update 2007/13*] WGS84 DATUM

Insert	Submarine cable,  , joining	1° 10'·00N., 104° 08'·35E. (shore)
		1° 10'·01N., 104° 11'·04E.
		1° 09'·45N., 104° 11'·61E. (S border)

**2448 SINGAPORE – Terumbu Pandan West-north-westwards and Johor Strait – P. Merambong East-north-Eastwards, T. Bunga South-eastwards and Town Reach – Buoyage. Wreck. Depth.**

Source: Maritime and Port Authority of Singapore

**Chart 4032** [ *previous update 1552/13*] WGS84 DATUM

Insert	 <b>FI.Y.4s NEA-CYR</b>	1° 15'·72N., 103° 44'·74E.
--------	--	----------------------------

**Chart 4034** [ *previous update New edition 11/04/2013*] WGS84 DATUM

Insert	 <b>FI.Y.4s NEA-CYR</b>	1° 15'·72N., 103° 44'·74E.
--------	--	----------------------------

**Chart 4038** [ *previous update 2007/13*] WGS84 DATUM

Insert	 <b>FI.Y.4s NEA-TUA</b>	1° 19'·22N., 103° 37'·47E.
	 <b>Wk</b>	(a)
Delete	depth <i>16<sub>4</sub></i> , close E of:	(a) above

**Chart 4038 (panel A, Town Reach)**[ *previous update 2007/13*] WGS84 DATUM

Insert	 <b>FI.Y.4s NEA-LCK</b>	1° 27'·57N., 103° 43'·59E.
--------	--	----------------------------

V  
EXTRACT OF ADMIRALTY NOTICES TO MARINERS  
FOR DUAL BADGED CHARTS

2448 SINGAPORE – Terumbu Pandan West-north-westwards and Johor Strait – P. Merambong East-north-Eastwards, T. Bunga South-eastwards and Town Reach – Buoyage. Wreck. Depth. (continued)

Chart 4040 [ *previous update New Edition 09/05/2013*] WGS84 DATUM

Insert		<b>Fl.Y.4s NEA-CYR</b>	1° 19'·72N., 103° 44'·74E.
		<b>Fl.Y.4s NEA-TUA</b>	1° 19'·22N., 103° 37'·47E.

---

Updated to Admiralty Notices to Mariners Edition No. 22 of 2013 dated 30<sup>th</sup> May 2013.

## MPA ENC DISTRIBUTORS

ENC DISTRIBUTOR	ADDRESS	TELEPHONE/FAX NO./EMAIL/WEBSITE
ChartWorld GmbH	Atlantic Haus, Zirkusweg 1 D-20359 Hamburg Germany	Tel. No.: +49 40 853 58 6942 Fax No.: +49 40 853 58 6949 Email: <a href="mailto:sales@chartworld.com">sales@chartworld.com</a>
ChartWorld Asia Pacific Pte Ltd.	Frontech Centre 07-01, 15 Jalan Kilang Barat, Singapore 159357	Tel No.: +65 6513 3500  Website : <a href="http://www.chartworld.com">http://www.chartworld.com</a> <a href="http://www.ecdis-as-a-service.com">http://www.ecdis-as-a-service.com</a>
DPM (Singapore) Pte Ltd	2 Boon Leat Terrace, #05-02/03 Harbourside 2, Singapore 119844	Tel. No.: +65 6270 4060 Fax No.: +65 6276 3858 Email: <a href="mailto:sales@dpmsingapore.com.sg">sales@dpmsingapore.com.sg</a> Website: <a href="http://www.dpmsingapore.com.sg">http://www.dpmsingapore.com.sg</a>
Maritime Information Systems (MARIS)	52, Telok Blangah Road #01-06, Telok Blangah House, Singapore 058809	Tel. No.: +65 6276 1472 Fax No.: +65 6276 1473 Email: : <a href="mailto:support@maris.sg">support@maris.sg</a> Website: <a href="http://www.maris.no">http://www.maris.no</a>
Maritime Information Systems AS (MARIS)	Danholmen 25, 3128 Notteroy, Norway	Tel. No.: +47 33 30 42 50 Fax No.: +47 33 30 42 51 Email: : <a href="mailto:sales@maris.no">sales@maris.no</a> Website: <a href="http://www.maris.no">http://www.maris.no</a>
Motion Smith	15 Jalan Kilang Barat #08-01/05 Frontech Centre, Singapore 159357	Tel. No.: +65 6220 5098 Fax No.: +65 6225 4902 Email: <a href="mailto:sales@motsmith.com">sales@motsmith.com</a> Website: <a href="http://www.motsmith.com">http://www.motsmith.com</a>
Transas Marine Pacific Pte Ltd	Cyber Centre 16/18 Jalan Kilang Barat Off Jalan Bukit Merah Singapore 159358	Tel. No.: +65 6271 0200 Fax No.: +65 6271 7300 Email: <a href="mailto:navigation.asia@transas.com">navigation.asia@transas.com</a> Website: <a href="http://www.transas.com">http://www.transas.com</a>
Japan Hydrographic Association (Electronic Charts Division)	Daiichi Sogo Bldg, 6F 1-6-6, Hanedakuko, Ota-ku Tokyo 144-0041, Japan	Tel. No.: +81 3 5708 7093 Fax No.: +81 3 5708 7094 Email: <a href="mailto:shimizu-6ki@jha.jp">shimizu-6ki@jha.jp</a> Website: <a href="http://www.jha.or.jp/en/jha/">http://www.jha.or.jp/en/jha/</a>
Jeppesen Norway AS	P.O Box 212 , N-4371 Egersund, Norway	Tel No.: +47 51 46 4700 Fax No.: +47 51 46 4701 Email: <a href="mailto:license.marine@jeppesen.com">license.marine@jeppesen.com</a> Website : <a href="http://www.jeppesen.com/marine">http://www.jeppesen.com/marine</a>
PRIMAR STAVANGER	Lervigsveien 36, P.O Box 60, N-4001 Stavanger, Norway	Tel. No.: +47 51 93 9500 Fax No.: +47 51 93 9501 Email: <a href="mailto:sales@ecc.no">sales@ecc.no</a> Website : <a href="http://www.primar.no">http://www.primar.no</a>
The United Kingdom Hydrographic Office	Admiralty Way, Taunton, Somerset, TA1 2DN United Kingdom	Tel. No.: +44 1823 33 7900 Fax No.: +44 1823 28 4077 Emails: <a href="mailto:ENC.SalesReports@ukho.gov.uk">ENC.SalesReports@ukho.gov.uk</a> Website: <a href="http://www.ukho.gov.uk">http://www.ukho.gov.uk</a>

**Chart Agents for the Maritime and Port Authority of Singapore**  
**Nautical Charts and Publications**

Please approach any of the appointed chart agents to purchase the Singapore Nautical Charts and Publications.

<b>CHART AGENT</b>	<b>ADDRESS</b>	<b>TELEPHONE/FAX NO./EMAIL/WEBSITE</b>
Cornes (Singapore) Pte Ltd	10 Anson Road #23-06/6A International Plaza Singapore 079903	Tel. No.: +65 6223 8320 Fax No.: +65 6223 8321 Email: sales9850@cspl.sg Website: <a href="http://www.cornes-charts.com">http://www.cornes-charts.com</a>
DPM (Singapore) Pte Ltd	2 Boon Leat Terrace, #05-02/03 Harbourside 2, Singapore 119844	Tel. No.: +65 6270 4060 Fax No.: +65 6276 3858 Email: sales@dpmsingapore.com.sg Website: <a href="http://www.dpmsingapore.com.sg">http://www.dpmsingapore.com.sg</a>
E.W. Liner Charts & Publications Pte Ltd	102F, Pasir Panjang Road, #08-01, Citilink Warehouse Complex, Singapore 118530	Tel. No.: +65 6323 0773 Fax No.: +65 6323 0775 Email: ewliner@singnet.com.sg Website: <a href="http://www.ewliner.com">http://www.ewliner.com</a>
Kelvin Hughes (Singapore) Pte Ltd	896 Dunearn Road #03-05 Sime Darby Centre Singapore 589472	Tel. No.: +65 6545 9880 Fax No.: +65 6545 8892 Email: leslie.khoo@kelvinhughes.com.sg Website: <a href="http://www.kelvinhughes.com">http://www.kelvinhughes.com</a>
Motion Smith	15 Jalan Kilang Barat #08-01/05 Frontech Centre Singapore 159357	Tel. No.: +65 6220 5098 (After office hours:+65 8163 9993) Fax No.: +65 6225 4902 Email: sales@motsmith.com Website: <a href="http://www.motsmith.com">http://www.motsmith.com</a>

## HYDROGRAPHIC NOTE - Instructions

1. Mariners are requested to notify the Chief Hydrographer, Maritime and Port Authority of Singapore, when new or suspected dangers to navigation are discovered, changes are observed in aids to navigation or where corrections to nautical publications may be necessary. Reports, which cannot be confirmed or are lacking in certain details should not be withheld.
2. Any ambiguities of time, positioning and depth should be stressed and any firm expectation of being able to check the information provided on a following voyage should be mentioned.
3. Mariners using satellite position fixing systems, eg. GPS, should provide details of equipment and datum used (where applicable). Where bearings (true or magnetic) are taken visually or by radar to fix a position, it should include more than two objects in order to provide a check on its accuracy. A position may also be defined by bearing and distance from a conspicuous object eg. beacon, lighthouse etc.
4. The note should include a tracing or a digital image of the chart used and the details should be clearly marked.
5. Echo sounders frequently register greater depths than the advertised maximum depth for the equipment, eg. a trace appearing at 50 metres may be in fact be 550 metres or even 1050 metres for equipment whose maximum depth is 500 metres. Erroneous depths caused by 2nd transmission error can usually be recognised by the following:
  - (a) the tracing being weaker than normal for the depth registered,
  - (b) the trace appearing to pass through the transmission line,
  - (c) the feathery nature of the trace.
6. Upon receipt of a hydrographic note, a Notice to Mariners may be issued. The sender's vessel or name is quoted as the source unless the same information is also received in foreign Notices to Mariners.
7. Reports of shoals, uncharted dangers and defects in aids to navigation may also be made to the appropriate Singapore Port Operations Control Centre on VHF Channels 10, 12, 14, 68 or 73.

## HYDROGRAPHIC NOTE

To:

Chief Hydrographer  
Maritime and Port Authority of Singapore  
460 Alexandra Road PSA Building #20-00  
Singapore 119963

Tel : (65) 6375 1227  
Fax : (65) 6278 7646  
Email : [hydrographic@mpa.gov.sg](mailto:hydrographic@mpa.gov.sg)

### **Sender's Contact Details** :

Date : .....

Name of Vessel : .....

Address of Sender : .....

Tel : ..... Fax : .....

Email : .....

### **Nature of Observation** :

General Location : .....

Subject : .....

Position : Lat. .... Long. ....

Charts Used : .....

Date & Time of Observation : .....

Details : .....

.....

.....

Attachment : .....

### **Equipment Used** :

Type of Position Fixing : ..... GPS / DGPS ..... Others : .....

Type of Echo Sounder : .....

Name and Signature : .....

Ship's/Company's Stamp : .....