



SINGAPOREAN NOTICES TO MARINERS

SECTION	CONTENT	Page
I	Index of Charts & Publications	1
II	New Publications	9
	Notices to Mariners and Chart Corrections	14
	Temporary and Preliminary Notices	16
III	Navigational Information	17
	Amendments to Publications	18
IV	Reprint of Radio Navigational Warnings	19
V	Extract of Admiralty Notices to Mariners for Dual-Badged Charts	20

The monthly Notices to Mariners contain corrective information affecting charts published by the Hydrographic Department, Maritime and Port Authority of Singapore. The information contained in these Notices should be updated on the charts affected. Notices under Section II apply only to the particular Singaporean Chart(s) indicated.

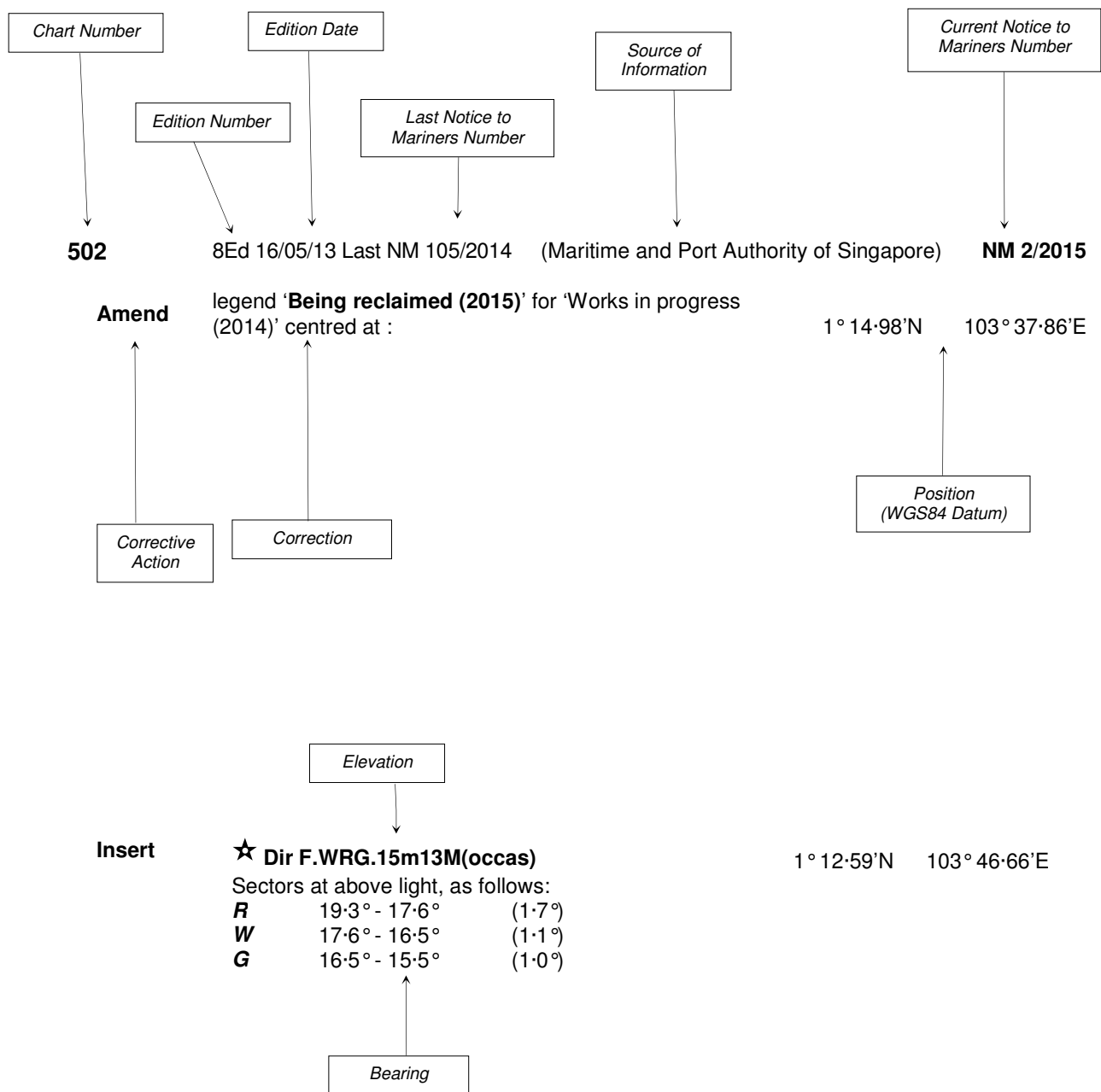
Mariners are requested to notify the Chief Hydrographer, Maritime and Port Authority of Singapore, immediately on the discovery of new dangers or suspected dangers to navigation and of changes or defects in aids to navigation. See Hydrographic Note on back page.

The monthly Singaporean Notices to Mariners can be accessed directly from the MPA website:
[http://www.mpa.gov.sg/sites/port_and_shipping/circulars_and_notices/singapore_notices_to_mariners\(ntm\).page](http://www.mpa.gov.sg/sites/port_and_shipping/circulars_and_notices/singapore_notices_to_mariners(ntm).page)

Hydrographic Department
Maritime and Port Authority of Singapore
7B Keppel Road
#20-00 Tanjong Pagar Complex
Singapore 089055
Tel: (65) 6325 2027
Fax: (65) 6226 1076
Email: hydrographic@mpa.gov.sg

EXPLANATION OF FORMAT

The elements of a typical chart correction are explained below.



Notes:

- Notice to Mariners number followed by:
T indicates a Temporary Notice (eg. **NM 3T/2015**).
P indicates a Preliminary Notice (eg. **NM 4P/2015**).
- Bearings are true reckoned clockwise from 000° to 359°; those relating to lights are from seaward.
- Heights and elevations are above Mean High Water Springs.

I
INDEX OF CHARTS AND PUBLICATIONS

INDEX OF AFFECTED CHARTS

DESCRIPTION	NOTICE NO.	PAGE NO.
Index of Singaporean Charts	-	3, 4
Index of Dual-Badged Charts	-	5 to 7
Index of Singapore Electronic Navigational Chart (ENC)	-	8
New Edition Dual Badged Charts	-	9 to 11
New Edition Electronic Navigational Chart (ENC)	-	11 to 13
Singaporean Chart GSP1/SP1	*49, *50, *51	14
Singaporean Chart 200	52	14
Singaporean Chart 201	52, 53	14
Singaporean Chart 500	*50	14
Singaporean Chart 501	*50	15
Singaporean Chart 502	*49	15
Temporary and Preliminary Notices	*54T, 55P	16
Singapore Port Marine Notices/Port Marine Circular	*56	17
Singaporean Print-On-Demand (POD) Charts	*57	17
Amendments to Publications	*58	18
Reprint of Radio Navigational Warnings	-	19
Extract of Admiralty Notices to Mariners for Dual-Badged Charts	-	20
Singapore Electronic Navigational Chart (ENC) Distributors	-	21
Chart Distributors for the Maritime and Port Authority of Singapore Nautical Charts and Publications	-	22

*Source: Maritime and Port Authority of Singapore

I
INDEX OF CHARTS AND PUBLICATIONS

INDEX OF NOTICES

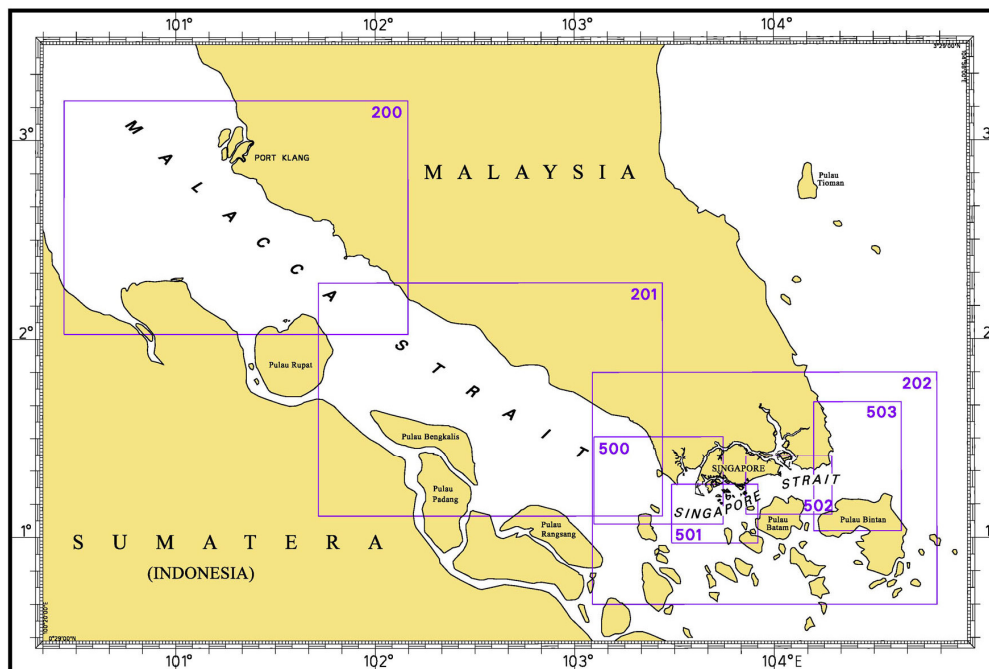
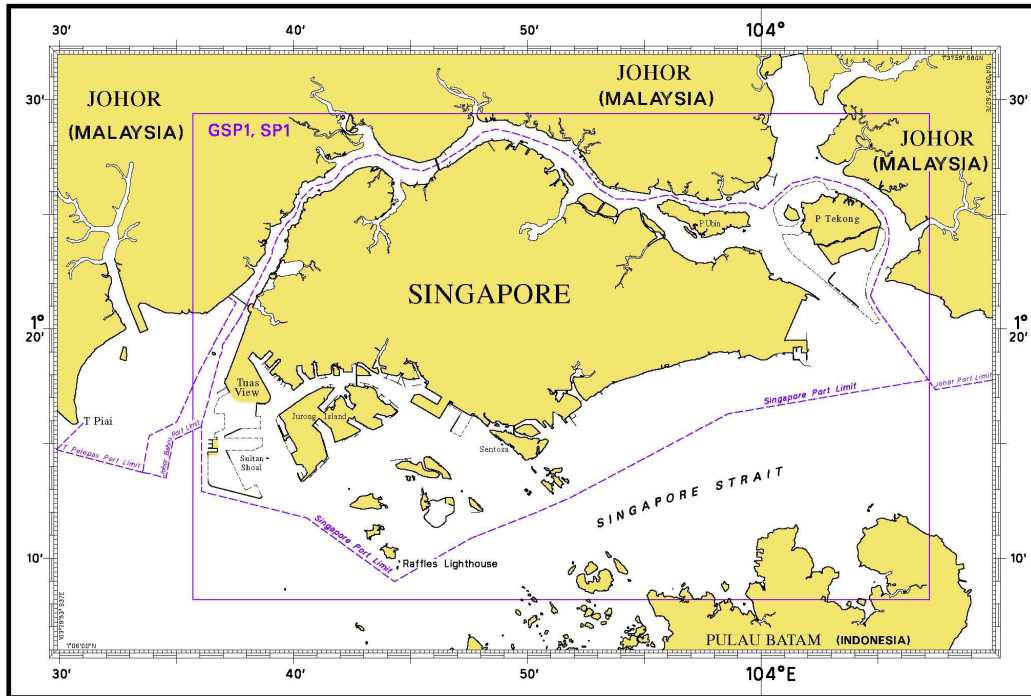
NOTICE NO.	DESCRIPTION	PAGE NO.
-	Index of Singaporean Charts	3, 4
-	Index of Dual-Badged Charts	5 to 7
-	Index of Singapore Electronic Navigational Chart (ENC)	8
-	New Edition Dual Badged Charts	9 to 11
-	New Edition Electronic Navigational Chart (ENC)	11 to 13
*49, *50, *51	Singaporean Chart GSP1/SP1	14
52	Singaporean Chart 200	14
52, 53	Singaporean Chart 201	14
*50	Singaporean Chart 500	14
*50	Singaporean Chart 501	15
*49	Singaporean Chart 502	15
*54T, 55P	Temporary and Preliminary Notices	16
*56	Singapore Port Marine Notices/ Port Marine Circular	17
*57	Singaporean Print-On-Demand (POD) Charts	17
*58	Amendments to Publications	18
-	Reprint of Radio Navigational Warnings	19
-	Extract of Admiralty Notices to Mariners for Dual-Badged Charts	20
-	Singapore Electronic Navigational Chart (ENC) Distributors	21
-	Chart Distributors for the Maritime and Port Authority of Singapore Nautical Charts and Publications	22

* Source: Maritime and Port Authority of Singapore

I

INDEX OF CHARTS AND PUBLICATIONS

INDEX OF SINGAPOREAN CHARTS



Notes:

Updated Singaporean Charts are available through our Print-On-Demand (POD) Chart Service. For more information, refer to Section III – Navigational Information. These charts can be purchased from our Chart Distributors.

I
INDEX OF CHARTS AND PUBLICATIONS

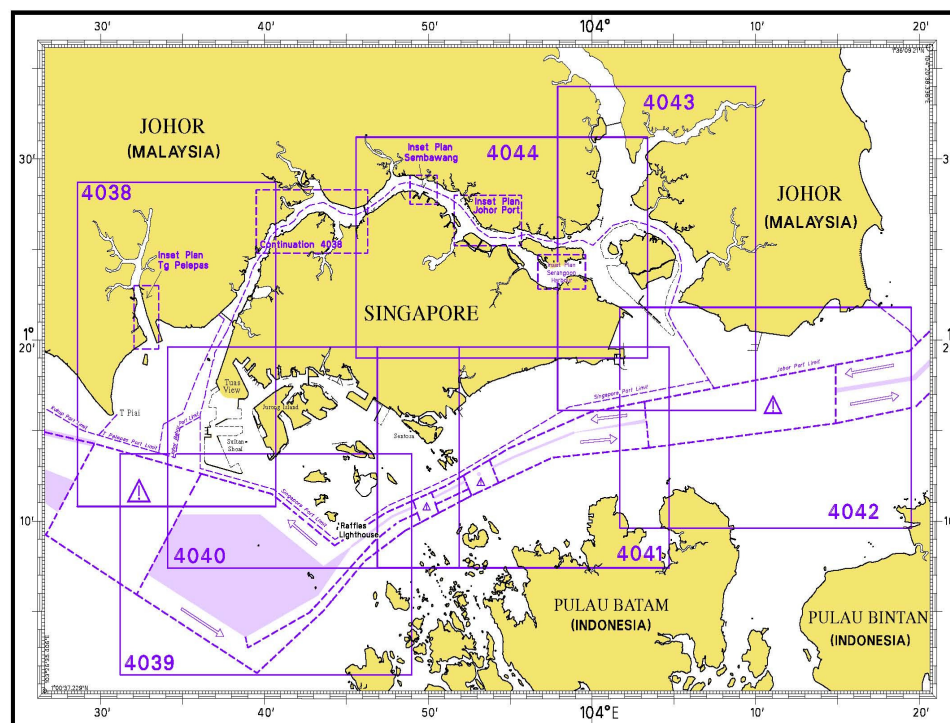
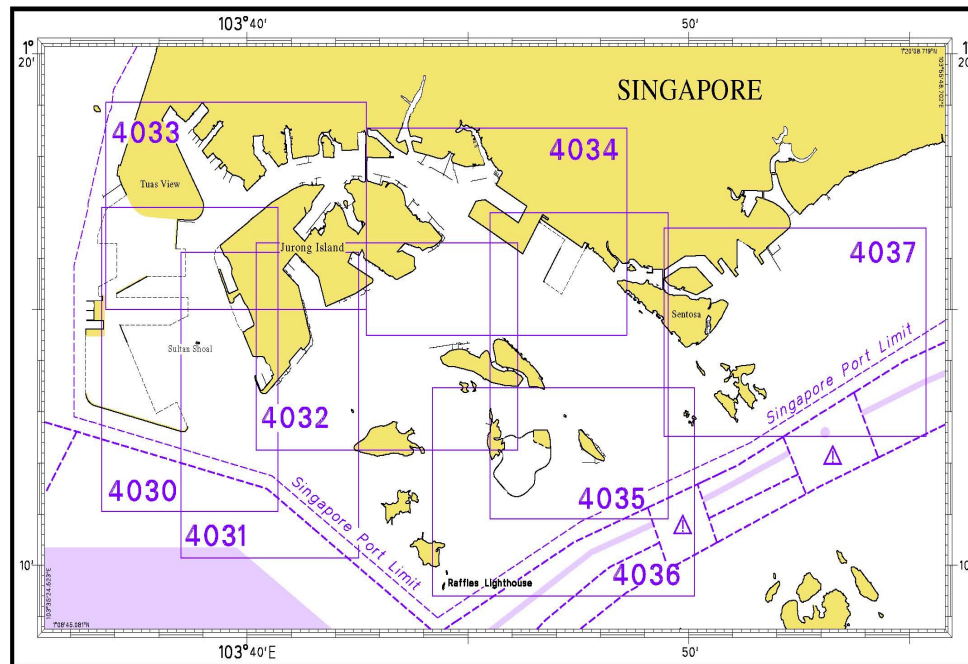
SINGAPOREAN CHARTS

Chart No.	Chart Title	Scale 1:	Date Published of Latest Edition
GSP1	Anchorage and Aids to Navigation (with Area Reference)	60 000	02/03/2015
SP1	Anchorage and Aids to Navigation	60 000	02/03/2015
200	Malacca Strait - Port Klang to Tanjung Keling	200 000	22/09/2011
201	Malacca Strait - Tanjung Keling to Western Entrance of Singapore Strait	200 000	15/08/2014
202	Singapore Strait	200 000	26/09/2013
500	Malacca and Singapore Straits – Pulau Pisang to Raffles Lighthouse	75 000	26/09/2013
501	Singapore Strait – Western Part	50 000	03/05/2012
502	Singapore Strait - Eastern Part	50 000	03/05/2012
503	South China Sea - Eastern Approaches and Entrance to Singapore Strait	75 000	15/08/2014
-	Charts for Small Craft – Singapore Strait & Adjacent Waterways	10 000 to 200 000	02/01/2015
1	<p>Symbols Abbreviations Terms and S-57 Objects used on Singapore Nautical and Electronic Navigational Charts.</p> <p>Available at MPA website http://www.mpa.gov.sg/sites/global_navigation/publications/chart1.page</p>	-	28/07/2011

I

INDEX OF CHARTS AND PUBLICATIONS

INDEX OF DUAL-BADGED CHARTS



I
INDEX OF CHARTS AND PUBLICATIONS

DUAL- BADGED CHARTS

Chart No.	Chart Title	Scale 1:	Date Published of Latest Edition
4030	Port of Singapore West Jurong Anchorages and Temasek Fairway	10 000	07/05/2015
4031	Port of Singapore Western Approaches to Jurong Island	10 000	07/05/2015
4032	Port of Singapore Sinki Fairway	10 000	15/05/2014
4033	Port of Singapore Tuas Bay, West Jurong Channel and Pesek Basin	10 000	07/05/2015
4034	Port of Singapore East Jurong Channel, Pasir Panjang Terminal and West Keppel Fairway	10 000	28/05/2015
4035	Port of Singapore Western Anchorages, Jong Fairway and Cruise Bay	10 000	28/05/2015
4036	Port of Singapore Raffles Lighthouse to The Sisters	10 000	28/05/2015
4037	Port of Singapore Keppel Harbour, Tanjong Pagar Terminal and Approaches	10 000	28/05/2015
4038	Malaysia and Singapore Johor Strait – Western Part	30 000	26/09/2013
4039	Indonesia, Singapore and Malaysia Western Approaches to Main Strait	30 000	24/04/2014
4040	Singapore, Indonesia and Malaysia Tuas View to Pulau Sakijang Bendera (S. John's Island)	30 000	14/08/2014
4041	Singapore and Indonesia Pulau Sebarok to Changi	30 000	14/08/2014

I

INDEX OF CHARTS AND PUBLICATIONS

DUAL- BADGED CHARTS

Chart No.	Chart Title	Scale 1:	Date Published of Latest Edition
4042	Indonesia, Malaysia and Singapore Changi to Pulau Mungging and Tanjung Buntan to Tanjung Tondang	30 000	24/04/2014
4043	Malaysia and Singapore Kuala Johor and Sungai Johor	30 000	09/04/2015
4044	Singapore and Malaysia Johor Strait - Eastern Part	30 000	09/04/2015

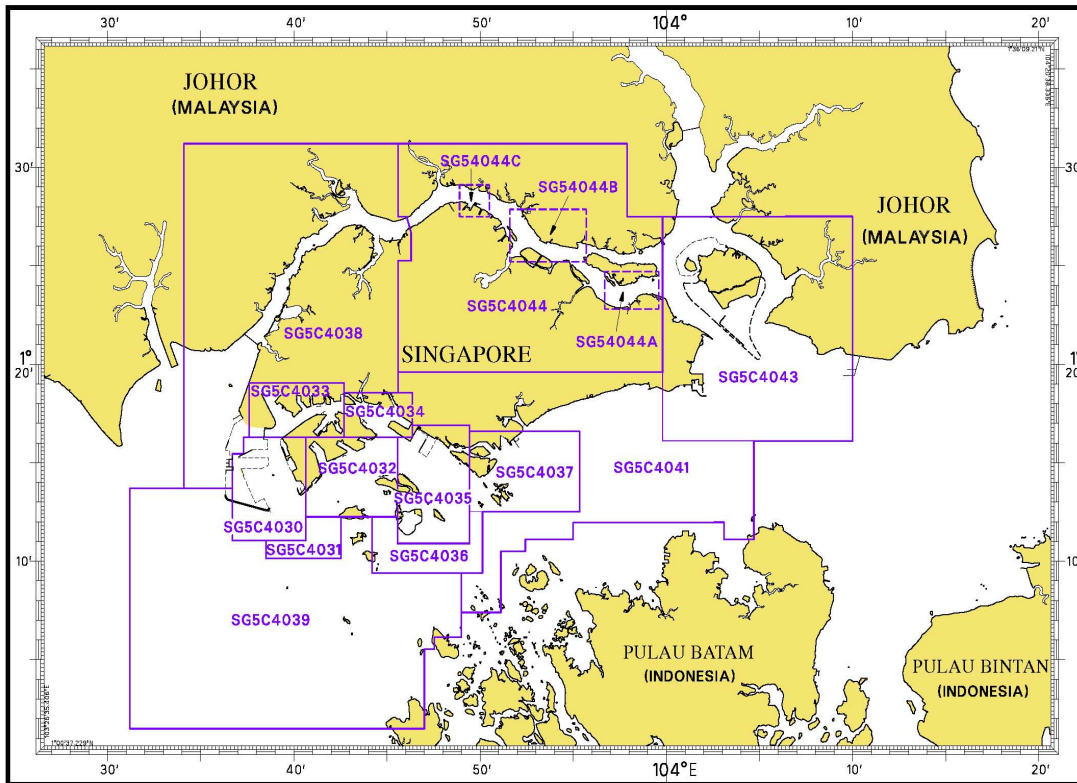
SINGAPOREAN PUBLICATIONS

Item	Title
1	Singapore Tide Tables Year 2015
2	Singapore Port Information 2014/2015

I

INDEX OF CHARTS AND PUBLICATIONS

INDEX OF SINGAPORE ELECTRONIC NAVIGATIONAL CHART (ENC)



SINGAPORE ELECTRONIC NAVIGATIONAL CHART (ENC)

ENC Name	ENC Coverage	ENC Edition
SG5C4030	West Jurong Anchorages and Temasek Fairway	8 th Edition (7/05/2015)
SG5C4031	Western Approaches to Jurong Island	7 th Edition (1/09/2014)
SG5C4032	Sinki Fairway	10 th Edition (7/05/2015)
SG5C4033	Tuas Bay, West Jurong Channel and Pesek Basin	8 th Edition (7/05/2015)
SG5C4034	East Jurong Channel, Pasir Panjang Terminal and West Keppel Fairway	13 th Edition (28/05/2015)
SG5C4035	Western Anchorages, Jong Fairway and Cruise Bay	16 th Edition (28/05/2015)
SG5C4036	Raffles Lighthouse to The Sisters	9 th Edition (28/05/2015)
SG5C4037	Keppel Harbour, Tanjong Pagar Terminal and Approaches	9 th Edition (28/05/2015)
SG5C4038	Johor Strait – Western Part	7 th Edition (1/09/2014)
SG5C4039	Western Approaches to Main Strait	7 th Edition (1/09/2014)
SG5C4041	Pulau Sebarok to Changi	8 th Edition (1/09/2014)
SG5C4043	Kuala Johor	11 th Edition (9/04/2015)
SG5C4044	Johor Strait – Eastern Part	11 th Edition (9/04/2015)
SG54044A	Serangoon Harbour	2 nd Edition (9/04/2015)
SG54044B	Pelabuhan Johor (Johor Port)	2 nd Edition (9/04/2015)
SG54044C	Sembawang	2 nd Edition (9/04/2015)

The latest edition of the Singapore ENC covering Singapore Waters and their approaches can be found in our monthly Singaporean Notices to Mariners at MPA website: [http://www.mpa.gov.sg/sites/port_and_shipping/port/charts_tidal_information_and_hydrography/charts/singapore_electronic_navigational_chart\(enc\).page](http://www.mpa.gov.sg/sites/port_and_shipping/port/charts_tidal_information_and_hydrography/charts/singapore_electronic_navigational_chart(enc).page)

II NEW PUBLICATIONS

NEW EDITION DUAL- BADGED CHARTS PUBLISHED ON 7TH MAY 2015

Chart Number	:	4030
Title	:	Port of Singapore West Jurong Anchorages and Temasek Fairway
Coverage	:	Lat 01° 11'·05 N 01° 17'·00 N Long 103° 36'·70 E 103° 40'·70 E
Scale	:	1: 10 000
Date Published	:	7 th May 2015
Size of Chart	:	742·0 x 1096·5 mm
Descriptions	:	This new edition includes updates covering Temasek Fairway, West Jurong Anchorage, West Jurong Channel, west of Jurong Island and Sinki Fairway including reclamation at Tuas View Extension.

The existing chart of the same number published on 15th May 2014 is superseded.

Chart Number	:	4031
Title	:	Port of Singapore
		Western Approaches to Jurong Island
Coverage	:	Lat 01° 10'·15 N 01° 16'·12 N
		Long 103° 38'·50 E 103° 42'·53 E
Scale	:	1: 10 000
Date Published	:	7 th May 2015
Size of Chart	:	747.5 x 1100·2 mm
Descriptions	:	This new edition includes updates covering Temasek Fairway, west of Jurong Island, Banyan Basin, Sinki Fairway and south of Sudong Explosive Anchorage.

The existing chart of the same number published on 15th May 2014 is superseded.

Chart Number	:	4033
Title	:	Port of Singapore
		Tuas Bay, West Jurong Channel and Pesek Basin
Coverage	:	Lat 01° 15'·00 N 01° 19'·05 N
		Long 103° 36'·80 E 103° 42'·70 E
Scale	:	1: 10 000
Date Published	:	7 th May 2015
Size of Chart	:	1094·4 x 746·4 mm
Descriptions	:	This new edition includes updates covering Temasek Fairway, West Jurong Channel and reclamation at Tuas View Extension.

The existing chart of the same number published on 15th May 2014 is superseded.

II NEW PUBLICATIONS

NEW EDITION DUAL- BADGED CHARTS PUBLISHED ON 28TH MAY 2015

Chart Number : 4034
Title : Port of Singapore
 East Jurong Channel, Pasir Panjang Terminal and West Keppel Fairway
Coverage : Lat 01° 14' 50 N 01° 18' 55 N
 Long 103° 42' 70 E 103° 48' 60 E
Scale : 1: 10 000
Date Published : 28th May 2015
Size of Chart : 1094.3 x 746.3 mm
Descriptions : This new edition includes updates covering East Jurong Channel, Pasir Panjang Terminal Phase 3 and 4, West Keppel Fairway and north of Jurong Island.

The existing chart of the same number published on 28th August 2014 is superseded.

Chart Number : 4035
Title : Port of Singapore
 Western Anchorages, Jong Fairway and Cruise Bay
Coverage : Lat 01° 10' 90 N 01° 16' 90 N
 Long 103° 45' 50 E 103° 49' 54 E
Scale : 1: 10 000
Date Published : 28th May 2015
Size of Chart : 1105.7 x 749.4 mm
Descriptions : This new edition includes updates covering Pasir Panjang Terminal Phase 3 and 4, East Jurong Channel, west of Sentosa and east of Pulau Sebarok.

The existing chart of the same number published on 28th August 2014 is superseded.

Chart Number : 4036
Title : Port of Singapore
 Raffles Lighthouse to The Sisters
Coverage : Lat 01° 09' 40 N 01° 13' 47 N
 Long 103° 44' 20 E 103° 50' 13 E
Scale : 1: 10 000
Date Published : 28th May 2015
Size of Chart : 1100.0 x 750.1 mm
Descriptions : This new edition includes updates covering Sisters Fairway, Southern Fairway, east of Pulau Sebarok, area covering the Shell SBM pipeline, Shell SBM and Semakau Spoil Ground.

The existing chart of the same number published on 25th April 2013 is superseded.

II NEW PUBLICATIONS

NEW EDITION DUAL- BADGED CHARTS PUBLISHED ON 28TH MAY 2015

Chart Number	:	4037
Title	:	Port of Singapore Keppel Harbour, Tanjong Pagar Terminal and Approaches
Coverage	:	Lat 01° 12' 52 N 01° 16' 59 N Long 103° 49' 40 E 103° 55' 34 E
Scale	:	1: 10 000
Date Published	:	28 th May 2015
Size of Chart	:	1101.8 x 750.1 mm
Descriptions	:	This new edition includes updates covering Sisters Fairway, Southern Fairway, East Keppel Fairway, Keppel Harbour, Tanjong Pagar Terminal, Marina South Pier and approaches to East Keppel Fairway.

The existing chart of the same number published on 25th April 2013 is superseded.

NEW EDITION SINGAPORE ENC RELEASED ON 7TH May 2015

ENC Name	:	SG5C4030
Location	:	West Jurong Anchorages and Temasek Fairway
Coverage	:	Lat 01° 11' 050 N 01° 16' 300 N Long 103° 36' 700 E 103° 40' 640 E
Compilation Scale	:	1: 8 000
Date Released	:	7 th May 2015
Descriptions	:	This new edition includes updates covering West Jurong Anchorage and Temasek Fairway.

The existing cell of the same name released on 1st September 2014 is superseded.

ENC Name	:	SG5C4032
Location	:	Sinki Fairway
Coverage	:	Lat 01° 12' 250 N 01° 16' 300 N Long 103° 40' 640 E 103° 45' 580 E
Compilation Scale	:	1: 8 000
Date Released	:	7 th May 2015
Descriptions	:	This new edition includes updates covering Sinki Fairway.

The existing cell of the same name released on 1st September 2014 is superseded.

II NEW PUBLICATIONS

NEW EDITION SINGAPORE ENC RELEASED ON 7TH May 2015

ENC Name : SG5C4033
Location : Tuas Bay, West Jurong Channel and Pesek Basin
Coverage : Lat 01° 16' 300 N 01° 19' 050 N
 Long 103° 38' 000 E 103° 42' 700 E
Compilation Scale : 1: 8 000
Date Released : 7th May 2015
Descriptions : This new edition includes updates covering Tuas Bay, West Jurong Channel and Pesek Basin.

The existing cell of the same name released on 1st September 2014 is superseded.

ENC Name : SG5C4034
Location : East Jurong Channel, Pasir Panjang Terminal and West Keppel Fairway
Coverage : Lat 01° 16' 300 N 01° 18' 550 N
 Long 103° 42' 700 E 103° 46' 360 E
Compilation Scale : 1: 8 000
Date Released : 28th May 2015
Descriptions : This new edition includes updates covering East Jurong Channel.

The existing cell of the same name released on 1st September 2014 is superseded.

ENC Name : SG5C4035
Location : Western Anchorages, Jong Fairway and Cruise Bay
Coverage : Lat 01° 10' 900 N 01° 16' 900 N
 Long 103° 45' 580 E 103° 49' 425 E
Compilation Scale : 1: 8 000
Date Released : 28th May 2015
Descriptions : This new edition includes updates covering East Jurong Channel, Jong Fairway and north-east of Semakau dumping ground.

The existing cell of the same name released on 1st September 2014 is superseded.

II NEW PUBLICATIONS

NEW EDITION SINGAPORE ENC RELEASED ON 28TH May 2015







ENC Name : SG5C4036
Location : Raffles Lighthouse to The Sisters
Coverage : Lat 01° 09' 400 N 01° 12' 520 N
 Long 103° 44' 200 E 103° 50' 130 E
Compilation Scale : 1:8 000
Date Released : 28th May 2015
Descriptions : This new edition includes updates covering Southern Fairway.

The existing cell of the same name released on 1st September 2014 is superseded.



ENC Name : SG5C4037
Location : Keppel Harbour, Tanjong Pagar Terminal and Approaches
Coverage : Lat 01° 12' 520 N 01° 16' 590 N
 Long 103° 49' 425 E 103° 55' 340 E
Compilation Scale : 1:8 000
Date Released : 28th May 2015
Descriptions : This new edition includes updates covering Keppel Harbour, East Keppel Fairway and Sisters Fairway.

The existing cell of the same name released on 1st September 2014 is superseded.

II NOTICES TO MARINERS AND CHART CORRECTIONS

GSP1/SP1	10Ed 2/03/15 Last NM 39/2015	(Maritime and Port Authority of Singapore)	NM 49/2015
Amend	name of beacon to MBCC-1	1°15'77"N	103°52'08"E
Delete	anchorage line joining	(Maritime and Port Authority of Singapore) 1°13'81"N 1°14'29"N	NM 50/2015 103°37'66"E 103°37'43"E
	legend, <i>West Jurong</i>  centred on:	1°14'31"N	103°37'98"E
Delete	 <i>Fl(2)Y.4s PKH V11</i>	(Maritime and Port Authority of Singapore) 1°15'46"N	NM 51/2015 103°46'66"E
<hr/>			
200	3Ed 22/09/11 Last NM 33/2015	(Malaysia Marine Department Notice No. 50/2015)	NM 52/2015
Move	 <i>Fl.G.10s Kuala Linggi 2</i> from:	2°16'50"N	102°00'50"E
	to: (a)	2°16'50"N	102°00'00"E
<hr/>			
201	5Ed 15/08/14 Last NM 41/2015	(Malaysia Marine Department Notice No. 50/2015)	NM 52/2015
Move	 <i>Fl.G.10s Kuala Linggi 1</i> from:	2°16'50"N	102°00'50"E
	to: (a)	2°16'50"N	102°00'00"E
Amend	'Kuala Linggi 1' to ' Kuala Linggi 2 ' at	(a) above	
Amend	light-beacon to, Fl.R.5s10m5M	Admiralty Notice No. 21/2586/2015) 2°05'57"N	NM 53/2015 102°29'03"E
<hr/>			
500	7Ed 26/09/13 Last NM 38/2015	(Maritime and Port Authority of Singapore)	NM 50/2015
Delete	anchorage line joining	1°13'81"N 1°14'29"N	103°37'66"E 103°37'43"E
	symbol,  at	1°14'79"N	103°39'01"E
	legend, <i>West Jurong</i>  centred on:	1°14'35"N	103°38'06"E

II NOTICES TO MARINERS AND CHART CORRECTIONS

501	6Ed 3/05/12 Last NM 38/2015	(Maritime and Port Authority of Singapore)	NM 50/2015
Delete	anchorage line joining	1°13'81"N	103°37'66"E
		1°14'29"N	103°37'43"E
	symbol,  at	1°14'72"N	103°39'05"E
	name, <i>West Jurong</i>  centred on:	1°14'53"N	103°38'40"E
<hr/>			
502	6Ed 3/05/12 Last NM 42/2015	(Maritime and Port Authority of Singapore)	NM 49/2015
Amend	name of beacon to MBCC-1	1°15'77"N	103°52'08"E
<hr/>			

II TEMPORARY AND PRELIMINARY NOTICES

*(NM 54T/2015)

Salvage Operations off Pedra Branca

Salvage operations conducted on the grounded barge 'POE Giant 12' at position Latitude 01° 19.814' N Longitude 104° 24.337' E has been completed.

Remarks : Singapore Notices to Mariners No. 14T/2015 is cancelled.

Charts Affected : Singaporean Charts 202, 503

Source : Maritime and Port Authority of Singapore

(NM 55P/2015) MALACCA STRAIT – Tanjung Rhu S – Wreck

Source: Admiralty NM 20/2431T/15 (Marine Department, Malaysia Notice 28T/15)

1. A wreck exists in the northbound lane of the Port Klang to Port Dickson Traffic Separation Scheme (TSS) in position 2° 42.97' N., 101° 16.63' E.
2. Mariners are advised to navigate with caution in the area.
(WGS84 Datum)

Charts affected : Singaporean Chart 200

III NAVIGATIONAL INFORMATION

*(NM 56/2015) **SINGAPORE PORT MARINE NOTICES / PORT MARINE CIRCULARS**

The Port Marine Notices shortlisted below would be of particular interest to mariners. Details and complete list of Port Marine Notices are available at this link:

http://www.mpa.gov.sg/sites/port_and_shipping/circulars_and_notices/port_marine_notices.page

PMN No.	Subject
49/2015	Reclamation work at Tuas View, off Temasek fairway.
50/2015	Works at Tuas Terminal Phase 1.

The Port Marine Circular shortlisted below would be of particular interest to mariners. Details and complete list of Port Marine Circulars are available at this link:

http://www.mpa.gov.sg/sites/port_and_shipping/circulars_and_notices/port_marine_circulars.page

PMC No.	Subject
6/2015	Revision of Anchorages, Fairways and Channels in Port.

*(NM 57/2015) **SINGAPOREAN PRINT-ON-DEMAND (POD) CHARTS**

Print-On-Demand (POD) Charts are the most up-to-date paper nautical charts printed for navigational use. These nautical charts are produced in accordance with the International Hydrographic Organisation (IHO) chart specifications. These official nautical charts are continually updated to the latest Notices to Mariners before they are printed and sold to users.

These POD Charts include 200, 201, 202, 500, 501, 502 and 503.

BENEFITS TO OUR CUSTOMERS

Convenience

Customers need not make numerous hand corrections to the nautical charts before use. In addition the updated POD Charts are more accurate and reliable than offset printed charts with hand corrections.

Clarity

Clarity in the presentation of updated information as compared to lithographic printed charts, where in some cases there are several overlapping corrections over existing information.

Coverage

The POD Charts cover the Malacca and Singapore Straits, from One Fathom Bank to Horsburgh Lighthouse.

*Source: Maritime and Port Authority of Singapore

III AMENDMENTS TO PUBLICATIONS

*(NM 58/2015) UPDATING OF PUBLICATION "SINGAPORE PORT INFORMATION 2014/2015"

1. Page 165 – Item 5

WHARVES AND BERTHS

PASIR PANJANG TERMINAL (PSA SINGAPORE TERMINALS) (1°17.2'N, 103°46.1'E)

Insert the following:

Berth	Length of Berth	Depth Alongside (Year Surveyed)	Controlling Depth In Approaches
P35	453m	*18.0m	-

2. Page 168 – Item 9a

MARINA SOUTH WHARF (JURONG PORT PTE LTD) (1°16.2'N, 103°51.4'E)

Insert the following:

Berth	Length of Berth	Depth Alongside (Year Surveyed)
Wharf	100m	3.6m (2011)

IV REPRINT OF RADIO NAVIGATIONAL WARNINGS

The following Radio Navigational Warnings have been shortlisted, as they would be of particular interest to mariners.

TT175

VESSELS IN EAST JOHOR STRAIT ARE ADVISED TO NAVIGATE WITH CAUTION WHEN NEAR THE PROJECT AREAS OFF PULAU TEKONG, CHANGI AND MALANG PAPAN AS SHALLOW WATER AREAS EXIST. VESSELS ARE ADVISED TO KEEP LOOKOUT FOR TUGS AND BARGES NAVIGATING NEAR THE PROJECT AREAS AND PASSENGER FERRIES CROSSING BETWEEN CHANGI AND PULAU TEKONG AND VICINITY OF PASIR GUDANG.

TT254

A NEW YELLOW BUOY NAMED "ADCP BUOY B" FL(Y) 4 SEC HAS BEEN LAID AT POSITION LAT 01° 15.18'N LONG 103° 55.87'E, GRID REF 5515D. ALL VESSELS ARE ADVISED TO NAVIGATE WITH CAUTION.

TT262

EAST CARDINAL BUOY VQ(3)5s IN POSITION 01° 12.58'N 103° 38.88'E IS REPORTED DAMAGED. VESSELS ARE ADVISED TO NAVIGATE WITH EXTRA CAUTION.

TT263(AMENDED 131820Z)

BATU BERHANTI ISOLATED DANGER BUOY FL(2)5S IS REMOVED FOR MAINTENANCE. ALL VESSELS IN THE VICINITY ARE ADVISED TO NAVIGATE WITH EXTRA CAUTION.

TT961

VESSELS INTENDING TO CROSS THE TRAFFIC SEPARATION SCHEME(TSS) OR PRECAUTIONARY AREAS IN THE SINGAPORE STRAIT DURING THE HOURS OF DARKNESS ARE RECOMMENDED TO DISPLAY THE NIGHT SIGNALS CONSISTING OF 3 ALL-ROUND GREEN LIGHTS IN A VERTICAL LINE WITH EFFECT FROM 1ST JULY 2011 AT 010000UTC (0800SGT) AS DETAILED IN MARITIME AND PORT AUTHORITY OF SINGAPORE'S PORT MARINE CIRCULAR, 02 OF 2011 DATED 30 MAY 2011.

ISSUED BY SINGAPORE PORT OPERATIONS CONTROL CENTRE (as at 24th May 2015)

V
EXTRACT OF ADMIRALTY NOTICES TO MARINERS
FOR DUAL-BADGED CHARTS

These notices can also be accessed directly from UKHO Website:

<http://www.ukho.gov.uk/ProductsandServices/MartimeSafety/Pages/NMPublic.aspx>

2446 SINGAPORE – Tanjong Pagar Terminal E – Dredged depths.

Source: Maritime and Port Authority of Singapore

Chart 4037 [*previous update 4925/14*] WGS84 DATUM

Amend	dredged depth to, 11.5m (2014) , centred on:	1° 15' 920N., 103° 51' 604E.
	dredged depth to, 11.2m (2014) , centred on:	1° 15' 968N., 103° 51' 686E.

2405(P)/15 SINGAPORE STRAIT – Tuas View – Reclamation area. Channel limits. Buoyage.

Source: Maritime and Port Authority of Singapore

1. *There is ongoing reclamation work at Tuas View.
2. The Temasek Fairway / West Jurong Channel limits have been amended to join the following positions:
 1° 16' 374N., 103° 38' 709E.
 1° 15' 440N., 103° 38' 709E.
 and
 1° 16' 121N., 103° 39' 216E.
 1° 15' 627N., 103° 39' 216E.
3. Buoyage marking the area has been amended.
4. These changes are shown in the accompanying diagram, however there may be amendments as the work progresses. For the latest information, see Singapore Port marine Notices which are available at this link:
http://www.mpa.gov.sg/sites/port_and_shipping/circulars_and_notices/port_marine_notices.page
5. Works are taking place day and night, including Sundays and Public Holidays. Craft involved in the reclamation works will display the appropriate local and international day and night signals. Vessels should proceed at slow speed when approaching the area and keep well clear of the working craft.
6. Navigational warnings are broadcast on VHF CH 21 (Jurong Control) and NAVTEX to inform vessels of the reclamation works. Mariners are to maintain a listening watch for the above safety information and communicate with Jurong Control on VHF Channel 22 for assistance.
7. Mariners are advised to navigate with caution in the area.
8. Former Notice 1147(P)/15 is cancelled.
 *Indicates new or revised entry
 (WGS84 Datum)

Charts affected - 4030 - 4031 - 4033

- * This diagram has been superseded by the one accompanying Singapore Port Marine Notice No. 50/2015, however there may be amendments as the work progresses. The Port Marine Notice is available at this link:
http://www.mpa.gov.sg/sites/port_and_shipping/circulars_and_notices/port_marine_notices.page

Updated to Admiralty Notices to Mariners Edition No. 22 of 2015 dated 28th May 2015.

SINGAPORE ENC DISTRIBUTORS

ENC DISTRIBUTOR	ADDRESS	TEL/FAX /EMAIL/WEBSITE
ChartWorld GmbH	Atlantic Haus, Zirkusweg 1 D-20359 Hamburg Germany	Tel: +49 40 853 58 6942 Fax: +49 40 853 58 6949 Email: sales@chartworld.com
ChartWorld Asia Pacific Pte Ltd.	Frontech Centre 07-01, 15 Jalan Kilang Barat, Singapore 159357	Tel: +65 6513 3500 Website: http://www.chartworld.com http://www.ecdis-as-a-service.com
DPM (Singapore) Pte Ltd	2 Boon Leat Terrace, #05-02/03 Harbourside 2, Singapore 119844	Tel: +65 6270 4060 Fax: +65 6276 3858 Email: sales@dpmsingapore.com.sg Website: http://www.dpmsingapore.com.sg
Maritime Information Systems (MARIS)	52, Telok Blangah Road #01-06, Telok Blangah House, Singapore 058809	Tel: +65 6276 1472 Fax: +65 6276 1473 Email: : support@maris.sg Website: http://www.maris.no
Maritime Information Systems AS (MARIS)	Danholmen 25, 3128 Notteroy, Norway	Tel: +47 33 30 42 50 Fax: +47 33 30 42 51 Email: : sales@maris.no Website: http://www.maris.no
Motion Smith	15 Jalan Kilang Barat #08-01/05 Frontech Centre, Singapore 159357	Tel: +65 6220 5098 Fax: +65 6225 4902 Email: sales@motsmith.com Website: http://www.motsmith.com
Transas Marine Pacific Pte Ltd	Cyber Centre 16/18 Jalan Kilang Barat Off Jalan Bukit Merah Singapore 159358	Tel: +65 6271 0200 Fax: +65 6271 7300 Email: navigation.asia@transas.com Website: http://www.transas.com
Japan Hydrographic Association (Electronic Charts Division)	Daiichi Sogo Bldg, 6F 1-6-6, Hanedakuko, Ota-ku Tokyo 144-0041, Japan	Tel: +81 3 5708 7093 Fax: +81 3 5708 7094 Email: shimizu-6kj@jha.jp Website: http://www.jha.or.jp/en/jha/
Jeppesen Norway AS	P.O Box 212 , N-4371 Egersund, Norway	Tel: +47 51 46 4700 Fax: +47 51 46 4701 Email: license.marine@jeppesen.com Website : http://www.jeppesen.com/marine
PRIMAR STAVANGER	Lervigsveien 36, P.O Box 60, N-4001 Stavanger, Norway	Tel: +47 51 93 9500 Fax: +47 51 93 9501 Email: sales@ecc.no Website : http://www.primar.no
The United Kingdom Hydrographic Office	Admiralty Way, Taunton, Somerset, TA1 2DN United Kingdom	Tel: +44 1823 33 7900 Fax: +44 1823 28 4077 Emails: ENCS.SalesReports@ukho.gov.uk Website: http://www.ukho.gov.uk

Chart Distributors for the Maritime and Port Authority of Singapore
Nautical Charts and Publications

Please approach any of the Chart Distributors to purchase the Singapore Nautical Charts and Publications.

CHART DISTRIBUTORS	ADDRESS	TEL/FAX/EMAIL/WEBSITE
Cornes (Singapore) Pte Ltd	10 Anson Road #23-06/6A International Plaza Singapore 079903	Tel: +65 6223 8320 Fax: +65 6223 8321 Email: sales9850@cspl.sg Website: http://www.cornes-charts.com
DPM (Singapore) Pte Ltd	2 Boon Leat Terrace, #05-02/03 Harbourside 2, Singapore 119844	Tel: +65 6270 4060 Fax: +65 6276 3858 Email: sales@dpmsingapore.com.sg Website: http://www.dpmsingapore.com.sg
E.W. Liner Charts & Publications Pte Ltd	100, Pasir Panjang Road, #05-10, Singapore 118518	Tel: +65 6323 0773 Fax: +65 6323 0775 Email: ewliner@singnet.com.sg Website: http://www.ewliner.com
Kelvin Hughes (Singapore) Pte Ltd	896 Dunearn Road #03-05 Sime Darby Centre Singapore 589472	Tel: +65 6545 9880 Fax: +65 6545 8892 Email: leslie.khoo@kelvinhughes.com.sg Website: http://www.kelvinhughes.com
Motion Smith	15 Jalan Kilang Barat #08-01/05 Frontech Centre Singapore 159357	Tel: +65 6220 5098 (After office hours: +65 8163 9993) Fax: +65 6225 4902 Email: sales@motsmith.com Website: http://www.motsmith.com

HYDROGRAPHIC NOTE - Instructions

1. Mariners are requested to notify the Chief Hydrographer, Maritime and Port Authority of Singapore, when new or suspected dangers to navigation are discovered, changes are observed in aids to navigation or where corrections to nautical publications may be necessary. Reports, which cannot be confirmed or are lacking in certain details should not be withheld.
2. Any ambiguities of time, positioning and depth should be stressed and any firm expectation of being able to check the information provided on a following voyage should be mentioned.
3. Mariners using satellite position fixing systems, eg. GPS, should provide details of equipment and datum used (where applicable). Where bearings (true or magnetic) are taken visually or by radar to fix a position, it should include more than two objects in order to provide a check on its accuracy. A position may also be defined by bearing and distance from a conspicuous object eg. beacon, lighthouse etc.
4. The note should include a tracing or a digital image of the chart used and the details should be clearly marked.
5. Echo sounders frequently register greater depths than the advertised maximum depth for the equipment, eg. a trace appearing at 50 metres may be in fact be 550 metres or even 1050 metres for equipment whose maximum depth is 500 metres. Erroneous depths caused by 2nd transmission error can usually be recognised by the following:
 - (a) the tracing being weaker than normal for the depth registered,
 - (b) the trace appearing to pass through the transmission line,
 - (c) the feathery nature of the trace.
6. Upon receipt of a hydrographic note, a Notice to Mariners may be issued. The sender's vessel or name is quoted as the source unless the same information is also received in foreign Notices to Mariners.
7. Reports of shoals, uncharted dangers and defects in aids to navigation may also be made to the appropriate Singapore Port Operations Control Centre on VHF Channels 10, 12, 14, 68 or 73.

HYDROGRAPHIC NOTE

To:

Chief Hydrographer
Maritime and Port Authority of Singapore
7B Keppel Road #20-00 Tanjong Pagar Complex
Singapore 089055

Tel : (65) 6325 2027
Fax : (65) 6226 1076
Email : hydrographic@mpa.gov.sg

Sender's Contact Details :

Date :

Name of Vessel :

Address of Sender :

Tel : Fax :

Email :

Nature of Observation :

General Location :

Subject :

Position : Lat. Long.

Charts Used :

Date & Time of Observation :

Details :

.....

.....

Attachment :

Equipment Used :

Type of Position Fixing : GPS / DGPS Others :

Type of Echo Sounder :

Name and Signature :

Ship's/Company's Stamp :