



## SINGAPOREAN NOTICES TO MARINERS

SECTION	CONTENT	Page
I	Affected Charts & Publications	1
II	New Charts and Publications	2
	Notices to Mariners and Chart Corrections	5
	Temporary and Preliminary Notices	6
III	Navigational Information	10
	Amendments to Publications	11
IV	Reprint of Maritime Safety Information	12
V	Extract of Admiralty Notices to Mariners for Dual-Badged Charts	14

The monthly Notices to Mariners contain information required to keep charts and publications published by the Hydrographic Division, Maritime and Port Authority of Singapore up-to-date.

Mariners are requested to notify the Chief Hydrographer, Maritime and Port Authority of Singapore, immediately of the discovery of new or suspected dangers to navigation, observed changes to aids to navigation and ways Singaporean Charts and Publications can be improved. The Hydrographic Note on the back page should be used for this purpose.

Detailed information of charts and publications (coverage of charts, latest editions and distributors) are available on the Maritime and Port Authority Website: [www.mpa.gov.sg](http://www.mpa.gov.sg)

- [Singaporean Notice to Mariners](#)
- [Singaporean Charts](#)
- [Dual-Badged Charts](#)
- [Singapore ENC](#)
- [Malacca and Singapore Straits ENC](#)
- [Singapore Port Information](#)
- [Singapore Tide Tables](#)

### Contact information:

Hydrographic Division

Maritime and Port Authority of Singapore

7B Keppel Road

#20-00 Tanjong Pagar Complex

Singapore 089055

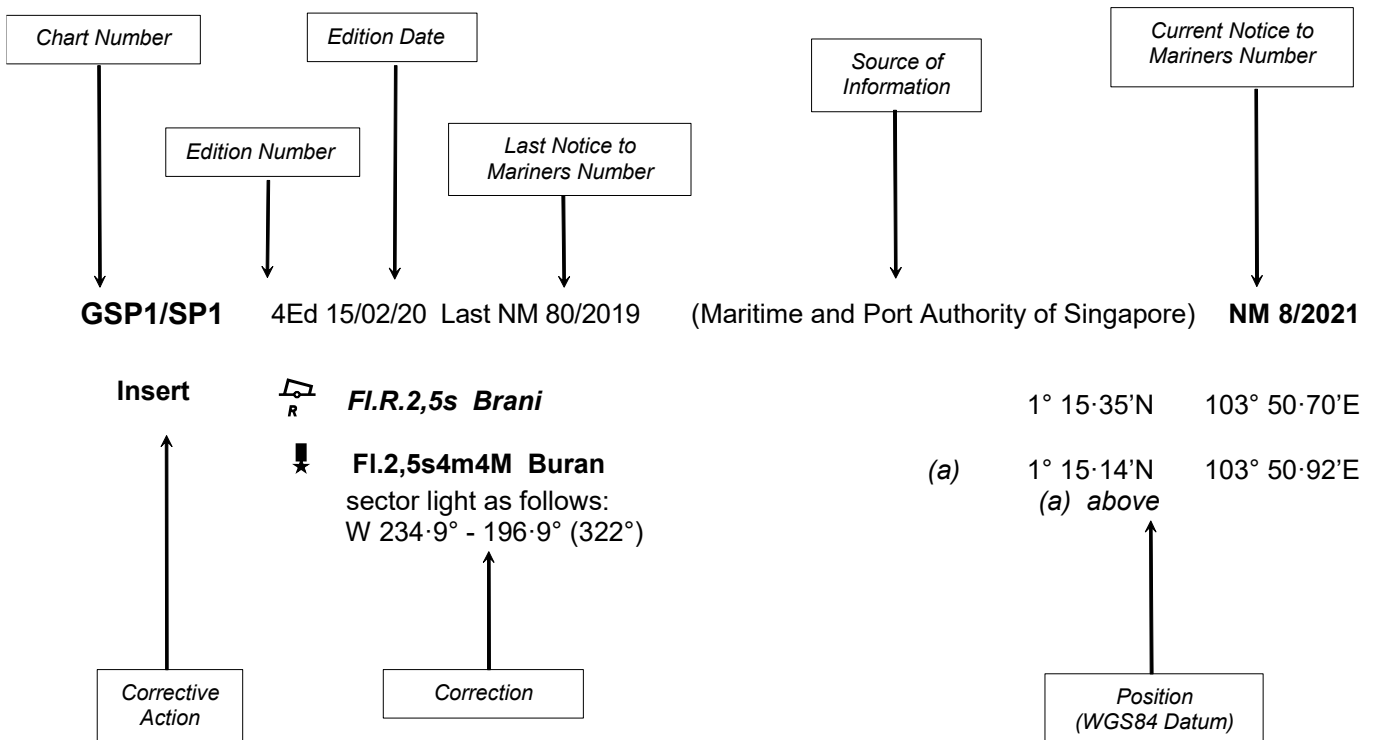
Tel : 1800 272 7777 / (65) 6272 7777

Fax : (65) 6226 1076

Email : [hydrographic@mpa.gov.sg](mailto:hydrographic@mpa.gov.sg)

## EXPLANATION OF FORMAT

The elements of a typical chart correction are explained below.



### Notes:

- Notice to Mariners number followed by:  
**T** indicates a Temporary Notice (eg. **NM 9T/2021**).  
**P** indicates a Preliminary Notice (eg. **NM 10P/2021**).
- Bearings are true reckoned clockwise from 000° to 359°; those relating to lights are from seaward.
- Heights and elevations are above Mean High Water Springs.
- # indicates where amendments are made.
- \* indicates source from Maritime and Port Authority of Singapore.

I  
**AFFECTED CHARTS AND PUBLICATIONS**

**INDEX OF NOTICES**

<b>NOTICE NO.</b>	<b>DESCRIPTION</b>	<b>PAGE NO.</b>
-	New Charts and Publications	2 - 4
56	Singaporean Chart 200	5
57	Singaporean Chart 201	5
*58	Singaporean Chart 501	5
59, 60	Singaporean Chart 502	5
60	Singaporean Chart 503	5
61P, *62T	Temporary and Preliminary Notices	6 - 9
*63	Singapore Port Marine Notices/Circulars	10
*64	Amendments to Publications	11
-	Reprint of Maritime Safety Information	12 - 13
-	Extract of Admiralty Notices to Mariners for Dual-Badged Charts	14 - 15

\*Source: Maritime and Port Authority of Singapore

## II NEW CHARTS AND PUBLICATIONS

### NEW EDITION DUAL BADGED CHARTS PUBLISHED ON 29<sup>TH</sup> APRIL 2021

<b>Chart Number</b>	: 4044
<b>Title</b>	: Singapore and Malaysia Johor Strait Eastern Part
<b>Coverage</b>	: Lat      01° 19·00' N                      01° 31·20' N Long    103° 45·60' E                      104° 03·40' E
<b>Scale</b>	: 1 : 30 000
<b>Date to be Published</b>	: 29 <sup>th</sup> April 2021
<b>Size of Chart</b>	: 1100.5 x 749.5 mm
<b>Description</b>	: This new edition includes updated surveys, changes to topography, aids to navigation, submarine cables and new floating sea barriers.  The existing chart of the same number published on 27 <sup>th</sup> December 2018 has been superseded.

### NEW EDITION DUAL BADGED CHARTS PUBLISHED ON 6<sup>TH</sup> MAY 2021

<b>Chart Number</b>	: 4043
<b>Title</b>	: Malaysia and Singapore Kuala Johor and Sungai Johor
<b>Coverage</b>	: Lat      01° 16·10' N                      01° 34·00' N Long    103° 57·90' E                      104° 10·00' E
<b>Scale</b>	: 1 : 30 000
<b>Date to be Published</b>	: 6 <sup>th</sup> May 2021
<b>Size of Chart</b>	: 748.1 x 1099.6 mm
<b>Description</b>	: This new edition includes updated surveys, changes to topography, aids to navigation, submarine cables and new floating sea barriers.  The existing chart of the same number published on 27 <sup>th</sup> December 2018 has been superseded.

### NEW EDITION DUAL BADGED CHARTS PUBLISHED ON 13<sup>TH</sup> MAY 2021

<b>Chart Number</b>	: 4042
<b>Title</b>	: Indonesia, Malaysia and Singapore Changi to Pulau Mungging Tanjung Buntan to Tanjung Tondang
<b>Coverage</b>	: Lat      01° 09·55' N                      01° 21·75' N Long    104° 01·70' E                      104° 19·50' E
<b>Scale</b>	: 1 : 30 000
<b>Date to be Published</b>	: 13 <sup>th</sup> May 2021
<b>Size of Chart</b>	: 1100.6 x 749.5 mm
<b>Description</b>	: This new edition includes updated surveys, changes to topography, aids to navigation, and submarine cables.  The existing chart of the same number published on 12 <sup>th</sup> September 2019 has been superseded.

## II NEW CHARTS AND PUBLICATIONS

### NEW EDITION SINGAPORE ENC RELEASED ON 29<sup>TH</sup> APRIL 2021

**ENC Name** : SG5C4044

**Location** : Johor Strait - Eastern Part

**Coverage** : Lat 01° 16·10' N 01° 31·20' N  
Long 103° 45·60' E 103° 59·80' E

**Compilation Scale** : 1 : 22 000

**Date Released** : 29<sup>th</sup> April 2021

**Description** : This new edition includes updated surveys, changes to topography, aids to navigation, submarine cables and new floating sea barriers.

The existing cell of the same name released on 27<sup>th</sup> December 2018 has been superseded.

---

**ENC Name** : SG54044A

**Location** : Serangoon Harbour

**Coverage** : Lat 01° 22·80' N 01° 24·70' N  
Long 103° 56·70' E 103° 59·60' E

**Compilation Scale** : 1 : 12 000

**Date Released** : 29<sup>th</sup> April 2021

**Description** : This new edition includes updated surveys, aids to navigation and new floating sea barriers.

The existing cell of the same name released on 27<sup>th</sup> December 2018 has been superseded.

---

**ENC Name** : SG54044B

**Location** : Pelabuhan Johor (Johor Port)

**Coverage** : Lat 01° 25·20' N 01° 27·86' N  
Long 103° 51·60' E 103° 55·70' E

**Compilation Scale** : 1 : 12 000

**Date Released** : 29<sup>th</sup> April 2021

**Description** : This new edition includes updated surveys, aids to navigation and new floating sea barriers.

The existing cell of the same name released on 27<sup>th</sup> December 2018 has been superseded.

## II NEW CHARTS AND PUBLICATIONS

**ENC Name** : SG54044C

**Location** : Sembawang

**Coverage** : Lat 01° 27·50' N 01° 29·10' N  
Long 103° 48·90' E 103° 50·50' E

**Compilation Scale** : 1 : 8 000

**Date Released** : 29<sup>th</sup> April 2021

**Description** : This new edition includes updated aids to navigation and new floating sea barriers.

The existing cell of the same name released on 27<sup>th</sup> December 2018 has been superseded.

### NEW EDITION SINGAPORE ENC RELEASED ON 6<sup>TH</sup> MAY 2021

**ENC Name** : SG5C4043

**Location** : Kuala Johor

**Coverage** : Lat 01° 16·10' N 01° 27·50' N  
Long 103° 59·80' E 104° 10·00' E

**Compilation Scale** : 1 : 22 000









**Date Released** : 6<sup>th</sup> May 2021

**Description** : This new edition includes updated aids to navigation, submarine cables and new floating sea barriers.

The existing cell of the same name released on 27<sup>th</sup> December 2018 has been superseded.

## II

### NOTICES TO MARINERS AND CHART CORRECTIONS

<b>200</b>	4 Ed 01/09/2015	Last NM 52/2021	(Royal Malaysian Navy Notice no. 04/86/2021)	<b>NM 56/2021</b>
<b>Insert</b>	 <i>Obstn</i>		2°26'71"N	101°49'03"E
	 <i>Obstn</i>		2°37'31"N	101°36'01"E
	 <i>Obstn</i>		2°37'09"N	101°36'12"E
	 <i>Obstn</i>		2°37'23"N	101°36'81"E
	 <i>Obstn</i>		2°37'04"N	101°36'91"E
	 <i>Obstn</i>		2°37'18"N	101°36'95"E
	 <i>Obstn</i>		2°37'32"N	101°36'98"E
<b>201</b>	6 Ed 15/09/2017	Last NM 53/2021	(Royal Malaysian Navy Notice no. 04/85/2021)	<b>NM 57/2021</b>
<b>Insert</b>	 <i>Obstn</i>		2°06'57"N	102°19'18"E
<b>501</b>	7 Ed 01/09/2015	Last NM 46/2021	(Maritime and Port Authority of Singapore)	<b>*NM 58/2021</b>
<b>Delete</b>	depth, <i>14<sub>1</sub></i>		1°14'47"N	103°51'81"E
<b>Insert</b>	depth, <i>14<sub>3</sub></i>		1°14'55"N	103°51'74"E
<b>502</b>	8 Ed 12/09/2019	Last NM 51/2021	(Royal Malaysian Navy Notice no. 04/90/2021)	<b>NM 59/2021</b>
<b>Delete</b>	depth, <i>17<sub>4</sub></i>		1°19'34"N	104°10'74"E
<b>Insert</b>	depth, <i>14<sub>1</sub></i>		1°19'29"N	104°10'73"E
<b>Insert</b>	maritime limit, pecked line, joining:	(BA4042 Ed 9)	1°20'50"N	104°17'58"E
			(chart border)	
			1°21'20"N	104°17'50"E
			1°21'20"N	104°17'93"E
			(chart border)	
	legend, <i>Bunkering Area</i> , centred on:		1°20'84"N	104°17'76"E
<b>503</b>	5 Ed 15/08/2014	Last NM 43/2021	(BA4042 Ed 9)	<b>NM 60/2021</b>
<b>Insert</b>	maritime limit, pecked line, joining:	(a)	1°21'20"N	104°17'50"E
			1°21'20"N	104°18'40"E
			1°20'60"N	104°19'28"E
			1°20'30"N	104°17'60"E
		(a)	<i>above</i>	
	legend, <i>Bunkering Area</i> , centred on:		1°20'84"N	104°17'76"E

## II

### TEMPORARY AND PRELIMINARY NOTICES

**(NM 61P/2021) : CHANGES TO MARITIME AREAS - EAST COAST - MALAYSIA**

1. Changes to maritime areas have taken place as follows :
2. A new anchorage area has been established, joining the following positions:
 

1°19·63'N,	104°07·14'E
1°19·27'N,	104°08·00'E
1°19·17'N,	104°08·50'E
1°18·30'N,	104°09·22'E
1°17·83'N,	104°07·47'E
1°19·25'N,	104°06·49'E
3. Anchorage area, ***Dangerous Goods***, has been amended, joining the following positions:
 

1°20·57'N,	104°06·53'E
1°20·02'N,	104°07·60'E
1°19·45'N,	104°06·31'E
1°20·05'N,	104°05·75'E
4. Anchorage area, ***Petroleum***, has been amended, joining the following positions:
 

1°20·57'N,	104°06·53'E
1°20·05'N,	104°05·75'E
1°20·63'N,	104°05·17'E
1°21·02'N,	104°05·75'E
5. Mariners are advised to navigate with caution in the area.

Charts affected - Singaporean Charts GSP1/SP1, 502

---

Source : Admiralty Notice No. 20/1983(P)/2021 & UK Hydrographic Office

## II TEMPORARY AND PRELIMINARY NOTICES

**\*(NM 62T/2021)** : **DREDGING WORKS IN TEMASEK FAIRWAY**

**Remarks** : Dredging works are being carried out within the limits of Temasek Fairway.  
(Refer to Maritime and Port Authority of Singapore, Port Marine Notice 33/2021)

**Working Period** : With effect from 06 May 2021 to 05 Nov 2021,  
24 hours daily including Sundays and Public Holidays

1. The working areas are bounded by the following geographical positions:

(WGS84 Datum)

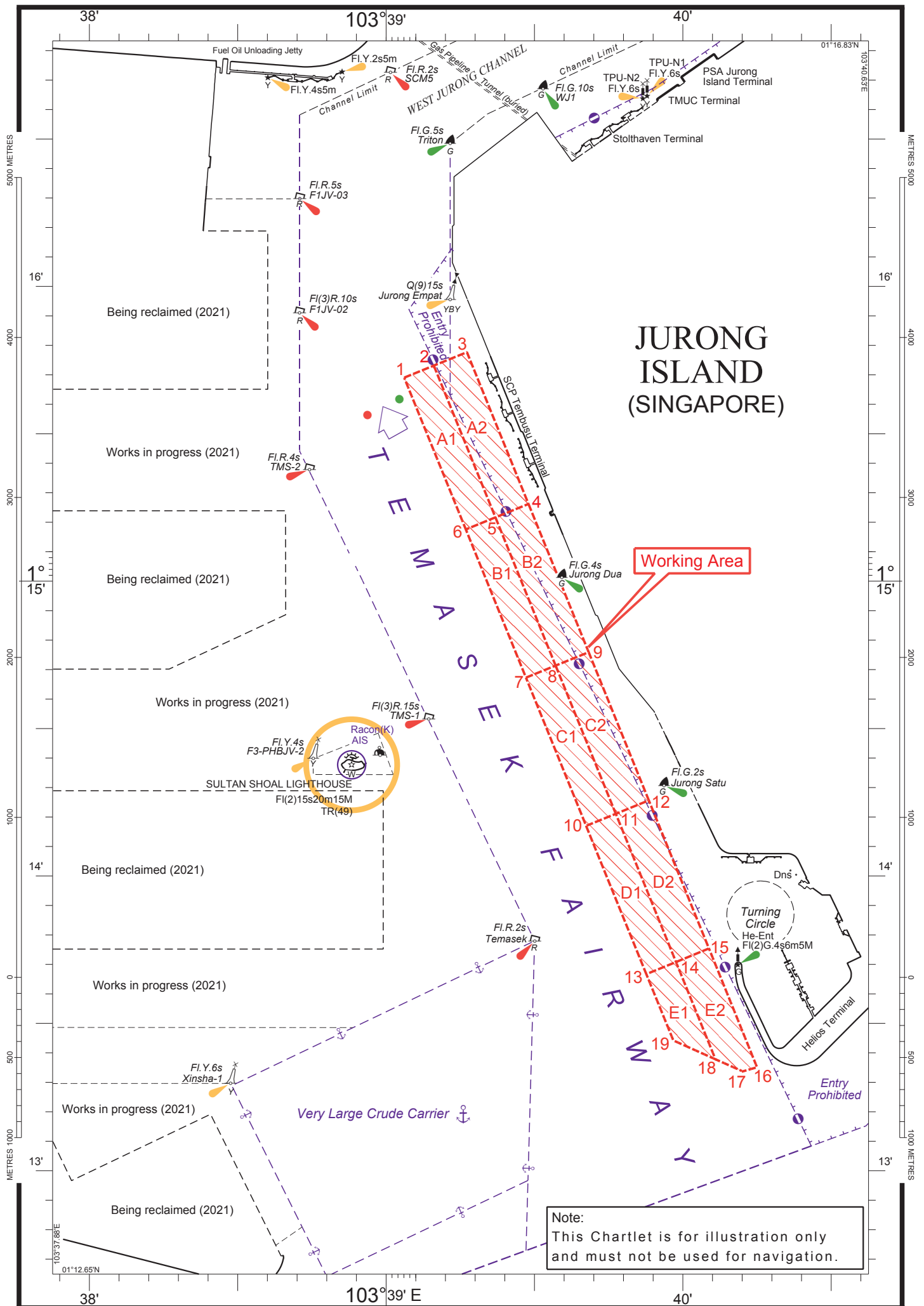
	Latitude (N)	Longitude (E)
(1)	1°15·690'	103°39·061'
(2)	1°15·731'	103°39·161'
(3)	1°15·777'	103°39·272'
(4)	1°15·262'	103°39·480'
(9)	1°14·759'	103°39·683'
(12)	1°14·256'	103°39·885'
(15)	1°13·754'	103°40·088'
(16)	1°13·351'	103°40·250'
(17)	1°13·337'	103°40·202'
(18)	1°13·378'	103°40·110'
(19)	1°13·442'	103°39·968'
(13)	1°13·667'	103°39·877'
(10)	1°14·170'	103°39·674'
(7)	1°14·673'	103°39·471'
(6)	1°15·176'	103°39·269'

2. Mariners are advised to refer to the latest Port Marine Notices available at the MPA website for the latest information and navigate with caution.

3. Navigational warning broadcast will be promulgated by Singapore VTIS on VHF Channel 22 and NAVTEX. Mariners are to maintain a listening watch.

**Charts affected** : Singaporean GSP1/SP1  
Dual-Badged BA4030, BA4031, BA4033, BA4038, BA4039 and BA4040

-----  
Source: Maritime and Port Authority of Singapore



**II**  
**TEMPORARY AND PRELIMINARY NOTICES**

**Cancelled Temporary and Preliminary Notices**

NIL

### III NAVIGATIONAL INFORMATION

\*(NM 63/2020)

**SINGAPORE PORT MARINE NOTICES / CIRCULARS**

The Port Marine Notices/Circulars shortlisted below would be of particular interest to Mariners. Details and complete list of Port Marine Notices/Circulars are available at this link:

<http://www.mpa.gov.sg/web/portal/home/port-of-singapore/circulars-and-notices>

**PMC No.****Subject**

14/2021

Crew change for cargo ships in the port of Singapore

15/2021

Prohibition of crew change in Singapore for crew with recent travel history to Bangladesh, Nepal, Pakistan and Sri Lanka

17/2021

Notice of Wreck

18/2021

Revision to the number of persons onboard pleasure craft in the port of Singapore

19/2021

Requirements for vessels arriving in the port of Singapore during COVID-19

20/2021

Requirements for vessels arriving from countries with sustained increase in COVID-19 cases

**PMN No.****Subject**

33/2021

Dredging works in Temasek Fairway

36/2021

Construction of jetty at Tuas View

37/2021

Construction of new quay wall at Gul Basin

\*Source: Maritime and Port Authority of Singapore

### III AMENDMENTS TO PUBLICATIONS

\*(NM 64/2021) UPDATING OF PUBLICATION “SINGAPORE PORT INFORMATION 2020/2021”

#### CONTROLLING DEPTHS OF NAVIGATIONAL CHANNELS AND FAIRWAYS

1. Page 109

Amend the following:

LOCATIONS	DEPTHS (m)	REMARKS
East Keppel Fairway (Eastern Half)	16·1 #	Deep water channel

#### WHARVES AND BERTHS

2. Page 165

#### 32 TANJONG PENJURU (CHEVRON SINGAPORE PTE LTD) (1°17·7'N, 103°44·3'E)

Amend the following:

Berth	Length of Berth Box	Max LOA	Depth alongside (Year Surveyed)	Controlling Depth in Approaches
OCHV1	402m	300m	12·9m (2021) #	14·2m
OCHV2	314m	300m	13·8m (2021) #	13·7m
OCHV3	50m	42m	2·8m (2021) #	2·9m
OCHV4	168m	140m	11·8m (2021) #	14·0m
OCHV5	247m	206m	10·8m (2021) #	10·4m
OCHV6	115m	103m	11·4m (2021) #	10·4m
OCHV7	91m	76m	6·7m (2021) #	8·4m

## IV

### REPRINT OF MARITIME SAFETY INFORMATION

The following Maritime Safety Information have been shortlisted, as they would be of particular interest to mariners.

#### TT175

VESSELS IN EAST JOHOR STRAIT ARE ADVISED TO NAVIGATE WITH PARTICULAR ALERTNESS AND CAUTION WHEN NEAR THE PROJECT AREAS OFF PULAU TEKONG, CHANGI AND MALANG PAPAN AS SHALLOW WATER AREAS EXIST. VESSELS ARE REMINDED TO PROCEED AT A SAFE SPEED AND MAINTAIN A PROPER LOOK-OUT, PARTICULARLY FOR TUGS AND BARGES NAVIGATING NEAR THE PROJECT AREAS AND PASSENGER FERRIES CROSSING BETWEEN CHANGI AND PULAU TEKONG AND VICINITY OF PASIR GUDANG.

#### TT273

ALL VESSELS ARE ADVISED TO NAVIGATE WITH CAUTION, COMPLY WITH THE COLREGS, MAINTAIN VHF RADIO WATCH AND LISTEN TO TRAFFIC INFORMATION WHEN NAVIGATING IN THE SINGAPORE STRAIT AND PORT WATERS. MARINERS ARE ALSO ADVISED TO KEEP A GOOD LOOKOUT OF FREQUENT FERRIES CROSSING THE SINGAPORE STRAIT.

#### TT363 (AMENDED ON 140821UTC APRIL 2019).

MARINERS ARE REMINDED NOT TO ANCHOR IN ALL AREAS IN THE TSS, INCLUDING PRECAUTIONARY AREAS OF THE STRAITS OF MALACCA AND SINGAPORE AS WELL AS BETWEEN THE LANDWARD LIMITS OF THE TSS AND APPROACHES TO THE PORTS. VESSELS ENTERING ANY PORT IN ANY LITTORAL STATES ARE TO ANCHOR IN THE ANCHORAGES DESIGNATED BY THE RESPECTIVE LITTORAL STATES. MARINERS ARE ALSO REMINDED THAT EVERY CARE SHOULD BE TAKEN TO AVOID ANCHORING IN THE VICINITY OF SUBMARINE CABLES OR PIPELINES.

#### TT399

VESSELS ARRIVING TO SINGAPORE OR TRANSITING THROUGH THE STRAIT ARE RECOMMENDED TO UPDATE THEIR DESTINATION ACCURATELY IN THE AIS TO ENHANCE SITUATIONAL AWARENESS FOR OTHER TRAFFIC IN THE VICINITY. EG: SG-PEBGB FOR PILOT EASTERN BOARDING GROUND BRAVO.

#### TT418

WEST BOUND DEEP DRAFT VESSELS AND VLCCS ARE REMINDED TO COMPLY WITH THE RULES OF VESSELS NAVIGATING THROUGH THE STRAITS OF MALACCA AND SINGAPORE (SOMS). THEY SHALL ALLOW FOR AN UKC OF AT LEAST 3.5 METRES AT ALL TIMES DURING THE ENTIRE PASSAGE THROUGH THE SOMS AND AS FAR AS IT IS SAFE AND PRACTICABLE, PROCEED AT A SPEED OF NOT MORE THAN 12 KTS OVER THE GROUND IN THE WESTBOUND LANE OF THE SINGAPORE STRAIT (BETWEEN SOUTH OF ST JOHN'S ISLAND & RAFFLES LIGHTHOUSE). THEY ARE ADVISED TO BROADCAST, 8 HOURS BEFORE ENTERING THE TSS, NAVIGATIONAL INFORMATION GIVING NAME, DEADWEIGHT, DRAUGHT, SPEED AND TIMES OF PASSING HORSBURGH LIGHTHOUSE AND RAFFLES LIGHTHOUSE.

#### TT426

ALL MARINERS ARE REMINDED TO NAVIGATE WITH CAUTION IN THE PRECAUTIONARY AREAS AND TSS, MAINTAIN A GOOD LOOKOUT FOR CROSSING TRAFFIC. VESSELS INTENDING TO CROSS THE TSS SHALL DO SO ONLY WHEN IT IS SAFE AND SHALL AT ALL TIMES COMPLY WITH THE COLREGS.

#### TT642

ALL MARINERS NAVIGATING THROUGH THE STRAIT OF SINGAPORE ARE REMINDED TO MAINTAIN CLOSE AND CONTINUOUS MONITORING OF VESSELS POSITION. IN DETERMINING RISK OF GROUNDING, DIFFERENT METHODS OF POSITION FIXING SHOULD ALSO BE USED AS MEANS OF CROSS-CHECKING.

#### TT643

THERE IS REPORT OF CONCENTRATION OF FISHING VESSELS OBSERVED IN THE EASTBOUND TRAFFIC LANE IN THE VICINITY BETWEEN BUFFALO ROCK AND BATU BERHANTI. ALL VESSELS ARE ADVISED TO PROCEED AT A SAFE SPEED, KEEP A SHARP LOOK OUT AND NAVIGATE WITH EXTREME CAUTION AT ALL TIME.

#### TT721

NORTH NIPA BN (Q FL)11M IN POSITION 01°10.23'N 103°39.72'E IS REPORTED UNLIT. ALL VESSELS NAVIGATING IN THE VICINITY ARE ADVISED TO NAVIGATE WITH CAUTION.

#### TT723

SECURITE MALACCA STRAIT, C/V ILE DE RE, call sign YBTT2:

SUBMARINE CABLE LAYING OPERATION BY C/V ILE DE RE FROM THE 24 FEB TO THE 31 MAY.

- 1) 01°07.7'N, 103°27.9'E
- 2) 01°15.1'N, 103°05.0'E
- 3) 01°36.7'N, 102°34.7'E
- 4) 02°12.4'N, 101°32.7'E
- 5) 02°36.5'N, 101°07.8'E
- 6) 02°40.7'N, 100°54.3'E

ALL SHIPS IN VICINITY ARE REQUIRED TO MAINTAIN A SHARP LOOKOUT AND KEEP A WIDE BERTH OF AT LEAST 500M CABLE SHIP ILE DE RE WILL BEAR RAM LIGHTS / DAYSHAPES AND WILL WATCH VHF CHANNEL 16

## IV

### REPRINT OF MARITIME SAFETY INFORMATION

TT729 (AMENDED 280027UTC)

HELEN MAR REEF BN (RACON M) IN POSITION 01°07.4'N 103°46.5'E HAS BEEN REPORTED OFF-AIR. ALL VESSELS NAVIGATING IN THE VICINITY ARE ADVISED TO NAVIGATE WITH CAUTION.

TT730 (AMENDED 280027UTC)

KARANG BANTENG BN (BUFFALO ROCK) (RACON K) IN POSITION 01°09.4'N 103°48.8'E HAS BEEN REPORTED OFF-AIR. ALL VESSELS NAVIGATING IN THE VICINITY ARE ADVISED TO NAVIGATE WITH CAUTION.

TT740

THERE IS A REPORT OF ATTEMPTED ROBBERY/THEFT INCIDENT ON 9 MAY 2021 AT 2239H IN POSITION LAT 01°14.77'N LONG 104°02.79'E. MARINERS ARE ADVISED TO KEEP A GOOD LOOK OUT AND MAINTAIN ANTI-PIRACY WATCH.

TT741

NELAYAN BUOY IN POSITION 01°21.85'N 104°02.81'E HAS BEEN REPORTED MISSING. ALL VESSELS NAVIGATING IN THE VICINITY ARE ADVISED TO NAVIGATE WITH CAUTION.

TT742 (AMENDED ON 240035HRS)

THERE IS A REPORT OF ATTEMPTED ROBBERY/THEFT INCIDENT ON 24 MAY 2021 AT 0046H IN POSITION LAT 01°16.48'N LONG 104°17.28'E. MARINERS ARE ADVISED TO KEEP A GOOD LOOK OUT AND MAINTAIN ANTI-PIRACY WATCH.

TT743

THERE IS A REPORT OF ATTEMPTED ROBBERY/THEFT INCIDENT ON 23 MAY 2021 AT 2230H IN POSITION LAT 01°16.7'N LONG 104°16.6'E. MARINERS ARE ADVISED TO KEEP A GOOD LOOK OUT AND MAINTAIN ANTI-PIRACY WATCH.

TT961

VESSELS INTENDING TO CROSS THE TRAFFIC SEPARATION SCHEME (TSS) OR PRECAUTIONARY AREAS IN THE SINGAPORE STRAIT DURING THE HOURS OF DARKNESS ARE RECOMMENDED TO DISPLAY THE NIGHT SIGNALS CONSISTING OF 3 ALL ROUND GREEN LIGHTS IN A VERTICAL LINE AS DETAILED IN THE MARITIME AND PORT AUTHORITY OF SINGAPORE'S PORT MARINE CIRCULAR, 04 OF 2013 DATED 7 MAY 2013.

SR123 (AMENDED ON 100800UTC JUNE 2020).

SEA ROBBERIES ARE REPORTED IN THE SINGAPORE STRAIT. MARINERS ARE TO MAINTAIN A CONSTANT VISUAL AND RADAR WATCH FOR SMALL CRAFT AND REPORT ANY SUSPICIOUS ACTIVITIES IN THE SINGAPORE STRAIT TO VTIS SINGAPORE.

---

ISSUED BY SINGAPORE PORT OPERATIONS CONTROL CENTRE (as at 31<sup>st</sup> May 2021)

**V**  
**EXTRACT OF ADMIRALTY NOTICES TO MARINERS**  
**FOR DUAL-BADGED CHARTS**

These notices can also be accessed directly from UKHO Website:

<http://www.admiralty.co.uk/maritime-safety-information/admiralty-notices-to-mariners>

**2099 SINGAPORE STRAIT - Depths. Buoyage. Beacon. Drying heights. Light-beacons.**

Source: Maritime and Port Authority of Singapore

**Chart 4030** [ *previous update 1218/21* ] WGS84 DATUM

<b>Delete</b>	 <i>Fl.Y.4s TSS4</i>	1°16·712'N	103°38·509'E
	 <i>Fl.Y.3s ADCP3TSS8</i>	1°14·379'N	103°38·960'E
	 <i>Fl.Y.2s ADCP4</i>	1°13·709'N	103°40·158'E

**Chart 4031** [ *previous update 1218/21* ] WGS84 DATUM

<b>Delete</b>	 <i>Fl.Y.3s ADCP3TSS8</i>	1°14·379'N	103°38·960'E
	 <i>Fl.Y.2s ADCP4</i>	1°13·709'N	103°40·158'E
	 <i>Fl.Y.4s TSS10</i>	1°15·074'N	103°41·943'E
	 <i>Fl.Y.4s TSS11</i>	1°15·227'N	103°42·381'E
	radar reflector at light-beacon	1°13·346'N	103°41·585'E


**Chart 4032** [ *previous update 542/21* ] WGS84 DATUM

<b>Delete</b>	 <i>Fl.Y.4s TSS10</i>	1°15·074'N	103°41·943'E
	 <i>Fl.Y.4s TSS11</i>	1°15·227'N	103°42·381'E
	radar reflector at light-beacon	1°13·346'N	103°41·585'E


**Chart 4033** [ *previous update 1218/21* ] WGS84 DATUM

<b>Delete</b>	 <i>Fl.Y.4s TSS4</i>	1°16·712'N	103°38·509'E
---------------	---	------------	--------------

**Chart 4035** [ *previous update 1218/21* ] WGS84 DATUM

<b>Insert</b>	 (ru)	1°11·838'N	103°48·350'E
<b>Replace</b>	drying height, <u>1</u> 9, with drying height, <u>2</u> 3	1°11·836'N	103°48·358'E

**Chart 4036** [ *previous update New Edition 22/10/2020* ] WGS84 DATUM

<b>Insert</b>	 (ru)	1°11·838'N	103°48·350'E
<b>Replace</b>	drying height, <u>1</u> 9, with drying height, <u>2</u> 3	1°11·836'N	103°48·358'E

**V**  
**EXTRACT OF ADMIRALTY NOTICES TO MARINERS**  
**FOR DUAL-BADGED CHARTS**

These notices can also be accessed directly from UKHO Website:

<http://www.admiralty.co.uk/maritime-safety-information/admiralty-notices-to-mariners>

**Chart 4039** [ *previous update 542/21* ] WGS84 DATUM

<b>Insert</b>	 (ru)	1°11·84'N	103°48·34'E
	drying height, $\underline{2}_3$	1°11·84'N	103°48·36'E
<b>Delete</b>	radar reflector at light-beacon	1°13·34'N	103°41·59'E

**Chart 4040** [ *previous update 1218/21* ] WGS84 DATUM

<b>Insert</b>	 (ru)	1°11·84'N	103°48·34'E
	drying height, $\underline{2}_3$	1°11·84'N	103°48·36'E
<b>Delete</b>	radar reflector at light-beacon	1°13·34'N	103°41·59'E

**Chart 4041** [ *previous update 1218/21* ] WGS84 DATUM

<b>Insert</b>	 (ru)	1°11·84'N	103°48·34'E
	drying height, $\underline{2}_3$	1°11·84'N	103°48·36'E
	 Fl.R.3s Changi East	1°18·88'N	104°00·93'E
<b>Replace</b>	depth, $29_5$ , with depth, $29_7$	1°16·95'N	103°59·84'E

**2157 SINGAPORE STRAIT - Submarine cable.**

Source: Maritime and Port Authority of Singapore

**Chart 4041** [ *previous update 2099/21* ] WGS84 DATUM

<b>Insert</b>	submarine cable,  , joining:	1°15·32'N	104°03·40'E
		1°14·25'N	104°03·60'E
		1°14·24'N	104°03·61'E
		1°14·35'N	104°04·11'E
		1°14·34'N	104°04·70'E

**2164 SINGAPORE - NM Block.**

Source: Maritime and Port Authority of Singapore

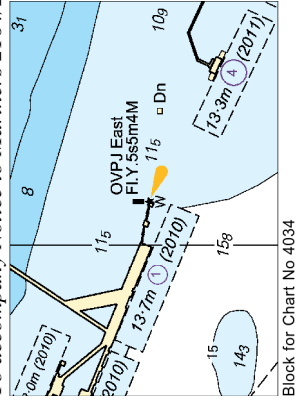
**Chart 4034** [ *previous update 5991/20* ] WGS84 DATUM

<b>Insert</b>	the accompanying block, centred on:	1°17·8'N	103°44·0'E
---------------	-------------------------------------	----------	------------

---

Updated to Admiralty Notices to Mariners no. 21 of 2021 dated 27<sup>th</sup> May 2021

To accompany Notice to Mariners 2164/21. Image Size (mm) 35.6 by 52.2



## **HYDROGRAPHIC NOTE - Instructions**

1. Mariners are requested to notify the Chief Hydrographer, Maritime and Port Authority of Singapore, when new or suspected dangers to navigation are discovered, changes are observed in aids to navigation or where corrections to nautical publications may be necessary. Reports, which cannot be confirmed or are lacking in certain details should not be withheld.
2. Any ambiguities of time, positioning and depth should be stressed and any firm expectation of being able to check the information provided on a following voyage should be mentioned.
3. Mariners using satellite position fixing systems, eg. GPS, should provide details of equipment and datum used (where applicable). Where bearings (true or magnetic) are taken visually or by radar to fix a position, it should include more than two objects in order to provide a check on its accuracy. A position may also be defined by bearing and distance from a conspicuous object eg. beacon, lighthouse etc.
4. The note should include a tracing or a digital image of the chart used and the details should be clearly marked.
5. Echo sounders frequently register greater depths than the advertised maximum depth for the equipment, eg. a trace appearing at 50 metres may be in fact be 550 metres or even 1050 metres for equipment whose maximum depth is 500 metres. Erroneous depths caused by 2nd transmission error can usually be recognised by the following:
  - (a) the tracing being weaker than normal for the depth registered,
  - (b) the trace appearing to pass through the transmission line,
  - (c) the feathery nature of the trace.
6. Upon receipt of a hydrographic note, a Notice to Mariners may be issued. The sender's vessel or name is quoted as the source unless the same information is also received in foreign Notices to Mariners.
7. Reports of shoals, uncharted dangers and defects in aids to navigation may also be made to the appropriate Singapore Port Operations Control Centre on VHF Channels 10, 12, 14, 68 or 73.

## HYDROGRAPHIC NOTE

To:

Chief Hydrographer  
Maritime and Port Authority of Singapore  
7B Keppel Road #20-00 Tanjong Pagar Complex  
Singapore 089055

Tel : 1800 272 7777 / (65) 6272 7777  
Fax : (65) 6226 1076  
Email : [hydrographic@mpa.gov.sg](mailto:hydrographic@mpa.gov.sg)

### **Sender's Contact Details** :

Date : .....

Name of Vessel : .....

Address of Sender : .....

Tel : ..... Fax : .....

Email : .....

### **Nature of Observation** :

General Location : .....

Subject : .....

Position : Lat. .... Long. ....

Charts Used : .....

Date & Time of Observation : .....

Details : .....  
.....  
.....

Attachment : .....

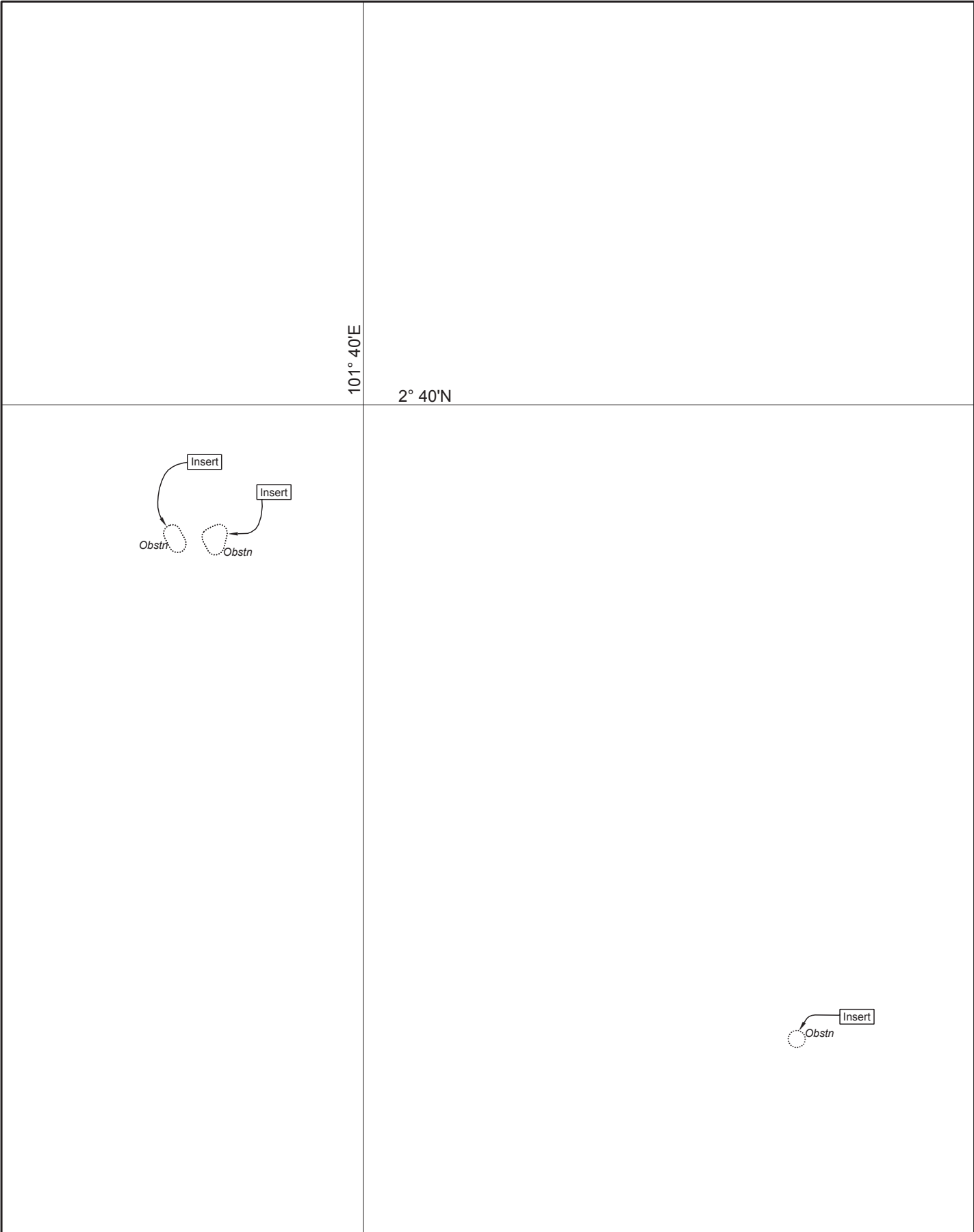
### **Equipment Used** :

Type of Position Fixing : ..... GPS / DGPS ..... Others : .....

Type of Echo Sounder : .....

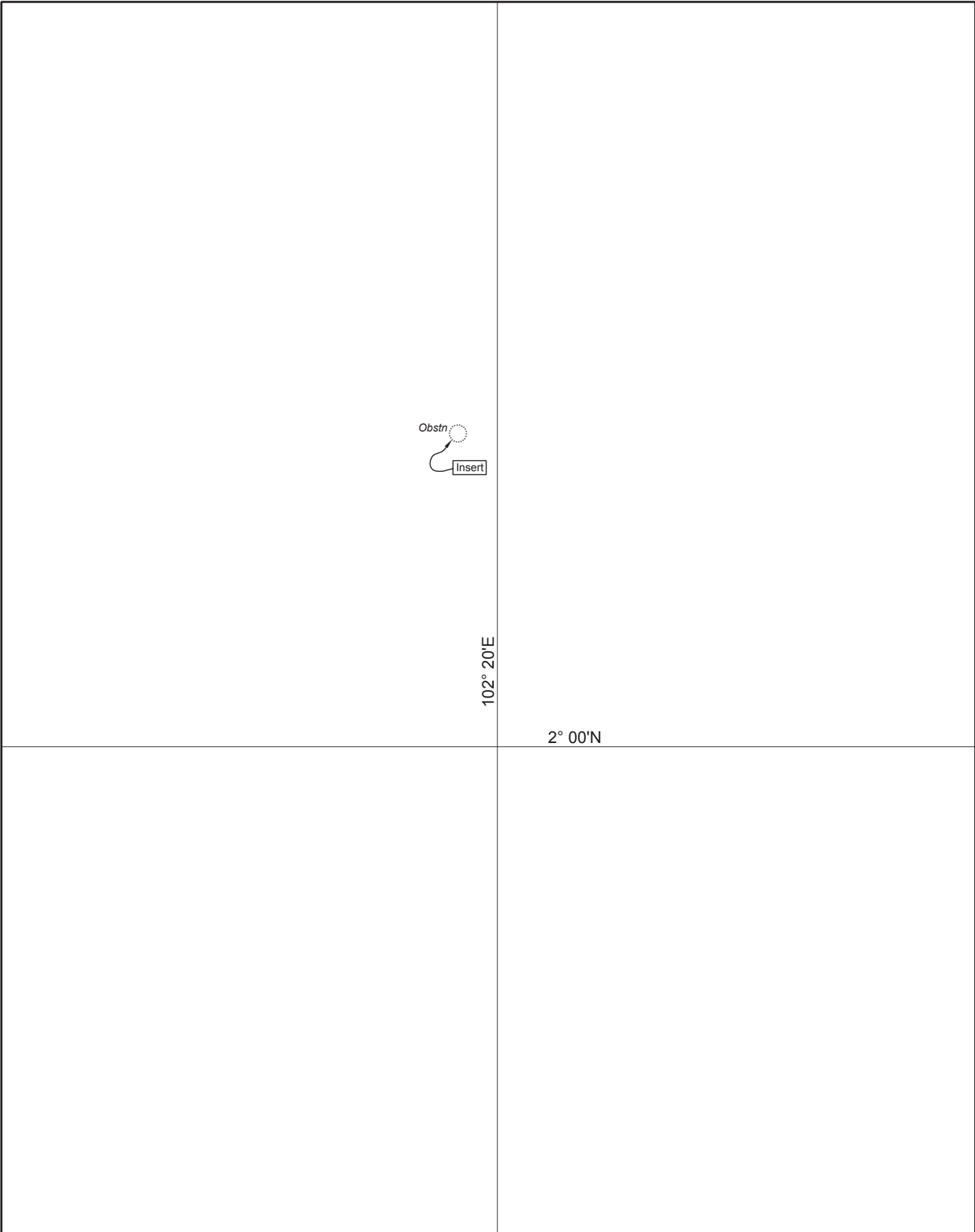
Name and Signature : .....

Ship's/Company's Stamp : .....




CORRECTION NO.	SNM EDN NO.	LAST CORR N NO.	CHART NO.	Location on Chart		
56	06/2021	52	200		X	

Caution : some computer printers might distort the tracings.  
Users are advised to check and, if necessary, adjust settings on the printer

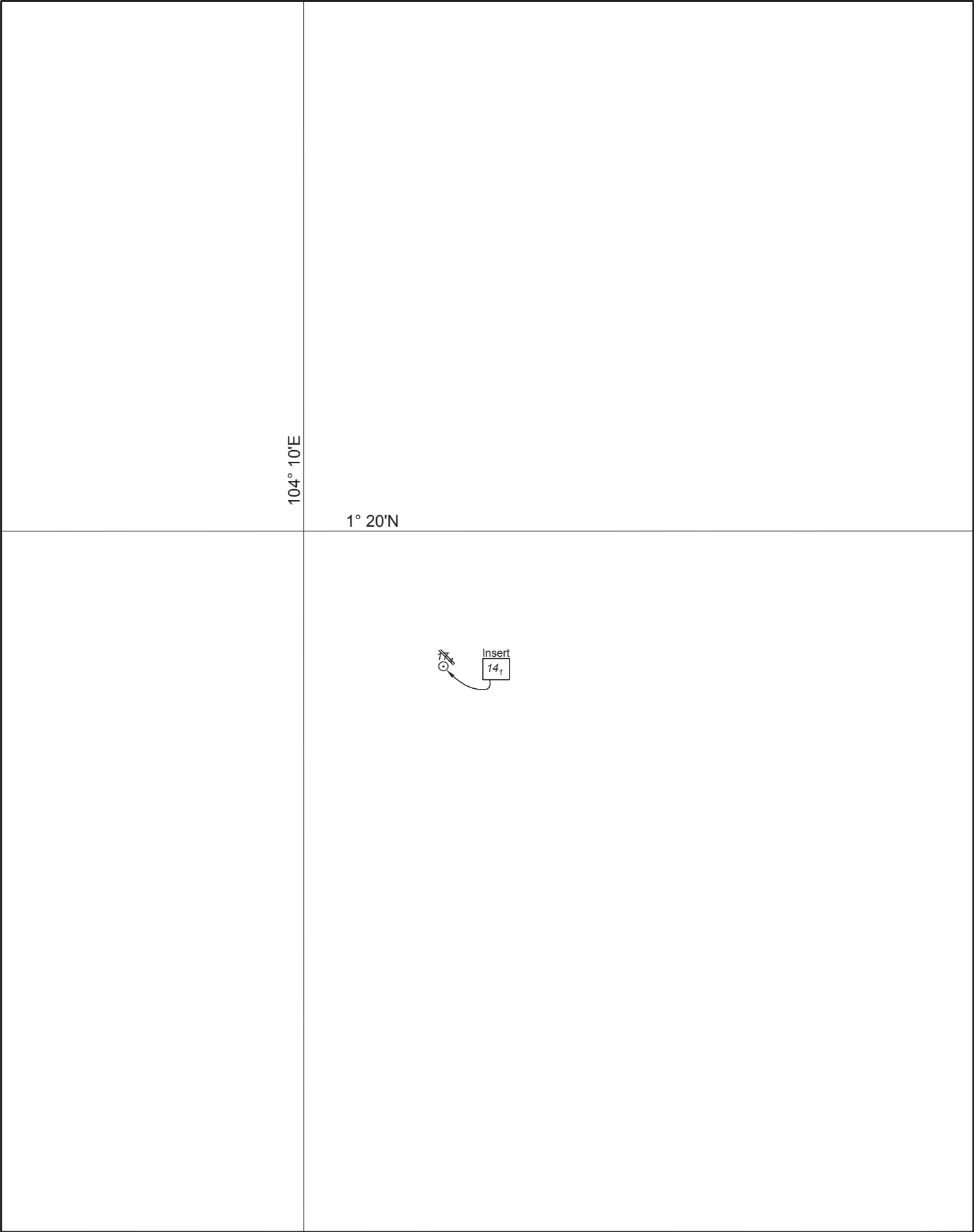


CORRECTION NO.	SNM EDN NO.	LAST CORR N NO.	CHART NO.	Location on Chart		
					X	
57	06/2021	53	201			

Caution : some computer printers might distort the tracings.  
Users are advised to check and, if necessary, adjust settings on the printer

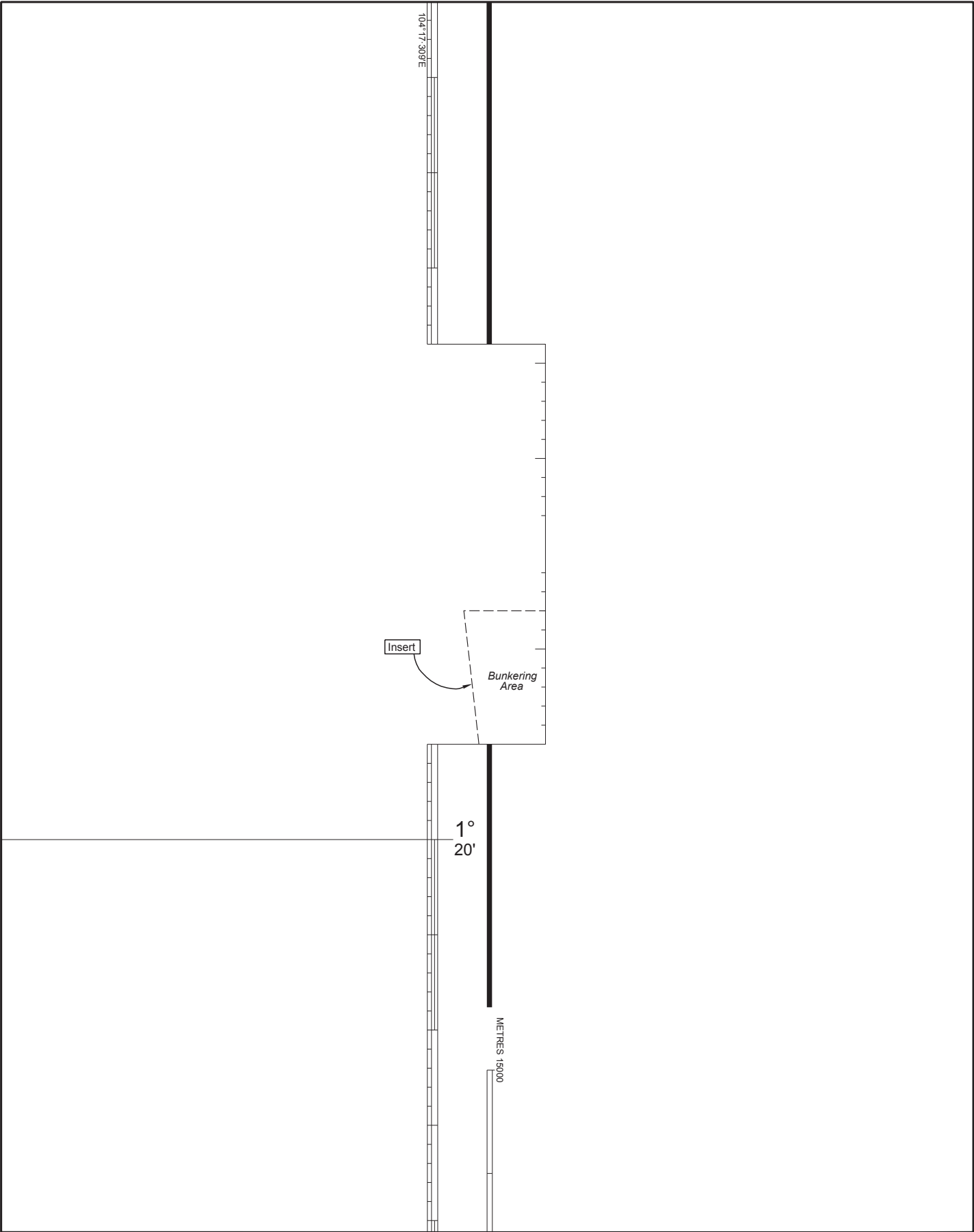
	103° 50'E	1° 15'N				<div>Insert</div> <div>14<sub>3</sub></div> 
CORRECTION NO.	SNM EDN NO.	LAST CORR N NO.	CHART NO.	Location on Chart		
58	06/2021	46	501			X

Caution : some computer printers might distort the tracings.  
Users are advised to check and, if necessary, adjust settings on the printer



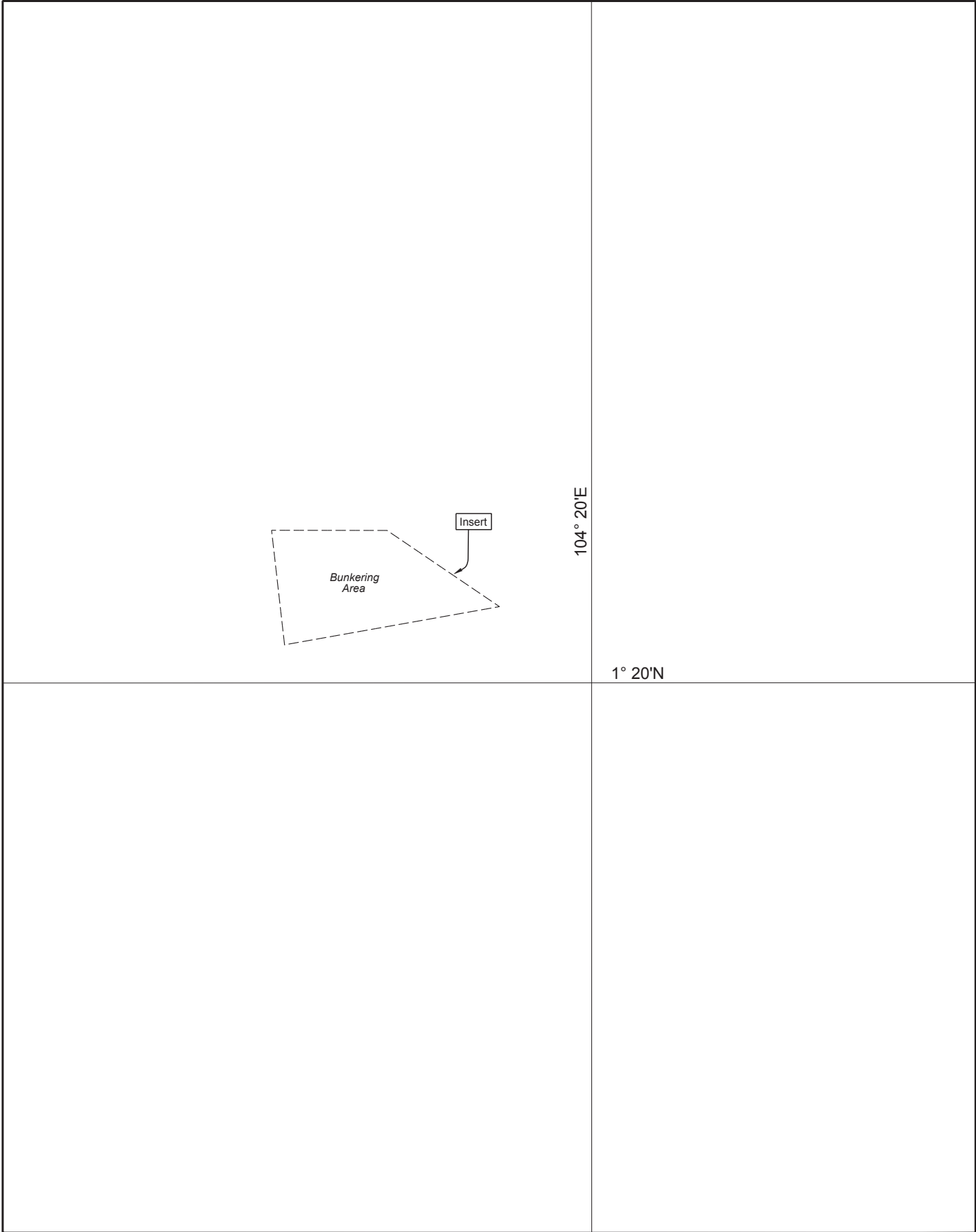
CORRECTION NO.	SNM EDN NO.	LAST CORR N NO.	CHART NO.	Location on Chart		
						X
59	06/2021	51	502			

Caution : some computer printers might distort the tracings.  
Users are advised to check and, if necessary, adjust settings on the printer



CORRECTION NO.	SNM EDN NO.	LAST CORR N NO.	CHART NO.	Location on Chart		
						X
60	06/2021	59	502			

Caution : some computer printers might distort the tracings.  
Users are advised to check and, if necessary, adjust settings on the printer



CORRECTION NO.	SNM EDN NO.	LAST CORR N NO.	CHART NO.	Location on Chart		
60	06/2021	43	503	X		

Caution : some computer printers might distort the tracings.  
Users are advised to check and, if necessary, adjust settings on the printer