



## SINGAPOREAN NOTICES TO MARINERS

---

SECTION	CONTENT	Page
I	Index of Charts & Publications	44
II	New Publications	49
	Notices to Mariners and Chart Corrections	52
	Temporary and Preliminary Notices	53
III	Navigational Information	54
	Amendments to Publications	56
IV	Reprint of Radio Navigational Warnings	58
V	Reprint of Admiralty Notices to Mariners for Dual Badged Charts	59

---

The monthly Notices to Mariners contain corrective information affecting charts published by the Hydrographic Department, Maritime and Port Authority of Singapore. The information contained in these Notices should be updated on the charts affected. Notices under Section II apply only to the particular Singaporean Chart(s) indicated.

---

Mariners are requested to notify the Chief Hydrographer, Maritime and Port Authority of Singapore, immediately on the discovery of new dangers or suspected dangers to navigation and of changes or defects in aids to navigation. See Hydrographic Note on back page.

The monthly Singaporean Notices to Mariners can be accessed directly from the MPA website:

<http://www.mpa.gov.sg/> > Circulars & Notices > Singaporean NTM

or

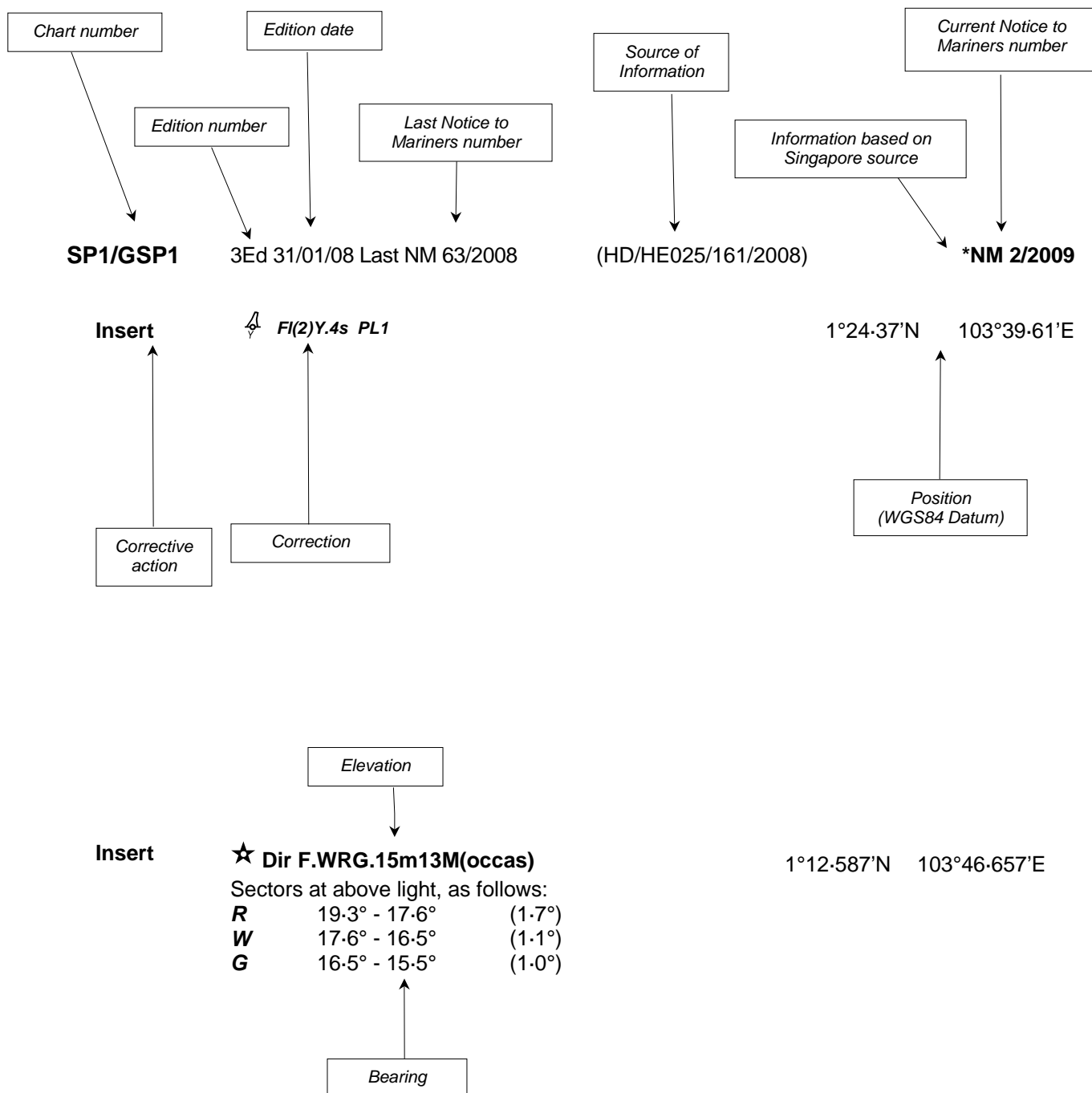
<http://www.mpa.gov.sg/infocentre/publications/noticesmari.htm>

This service is offered free of charge.

Hydrographic Department  
Maritime and Port Authority of Singapore  
460 Alexandra Road  
PSA Building #20-00  
Singapore 119963  
Tel: (65) 6375 1227  
Fax: (65) 6278 7646

## EXPLANATION OF FORMAT

The elements of a typical chart correction are explained below.



**Notes:**

- a) Notice to Mariners number followed by:
  - T** indicates a Temporary Notice (eg. \*NM 80T/2008).
  - P** indicates a Preliminary Notice (eg. \*NM 80P/2008).
- b) Bearings are referred to True Compass in degrees clockwise from 000° to 359°. Bearings related to lights are from seaward.
- c) Heights and elevations are above Mean High Water Springs.

I  
INDEX OF CHARTS AND PUBLICATIONS

DESCRIPTION	NOTICE NO.	PAGE NO.
Index of Singaporean Charts	-	46
Index of Dual Badged Charts	-	47
Index of Singapore Electronic Navigational Charts (ENC)	-	48
New Publication "SINGAPORE TIDE TABLES YEAR 2009"	-	49
New Edition Singaporean Charts	-	50
New Edition Dual Badged Charts	-	51
Singaporean Chart SP1/GSP1	*26	52
Singaporean Chart 201	27	52
Singaporean Chart 202	28	52
Temporary and Preliminary Notices	29T	53
Port Marine Notices	*30	54
Laying of cable operation Singapore to Batam, Indonesia, in the Traffic Separation Scheme of Singapore Strait	*31	54
Singaporean Print on Demand (POD) Charts	*32	55
Updating of Publication "SINGAPORE PORT INFORMATION 2008/2009 EDITION"	*33	56
Reprint of Radio Navigational Warnings	-	58
Reprint of Admiralty Notices to Mariners for Dual Badged Charts	-	59
Singapore Electronic Navigational Charts (ENC) Distributors	-	63

\* Denotes information are based on Singapore source.

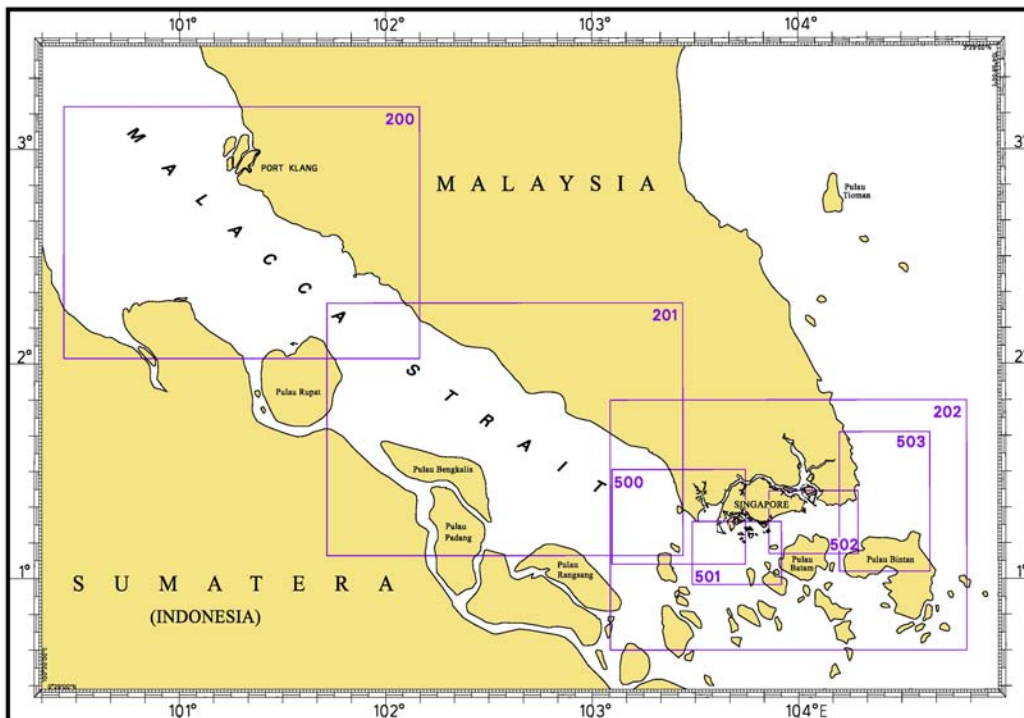
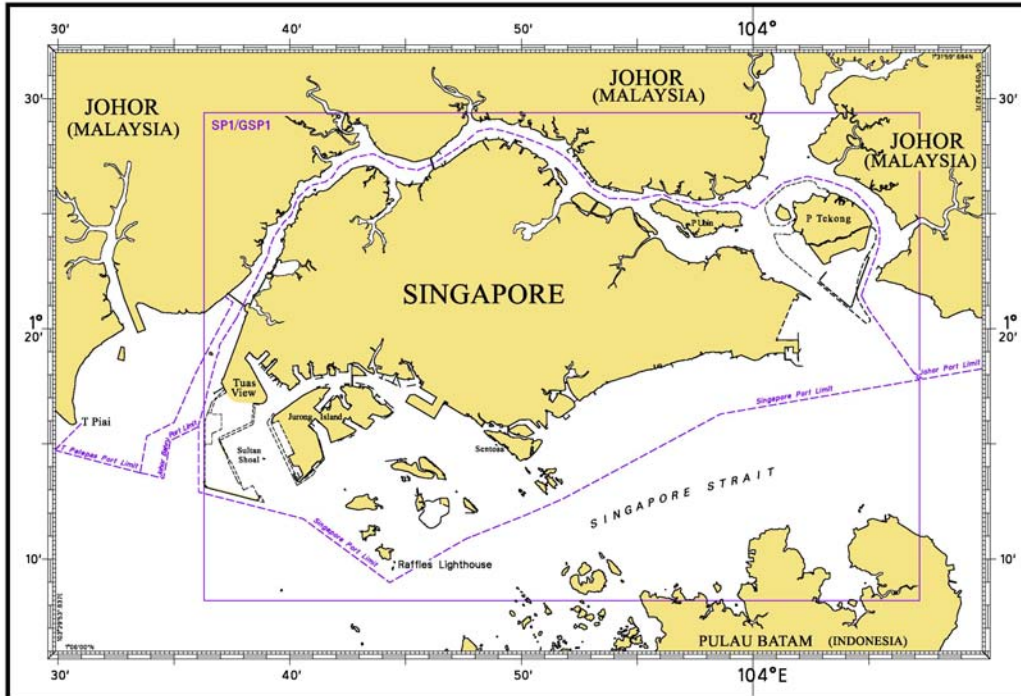
## INDEX OF CHARTS AND PUBLICATIONS

NOTICE NO.	DESCRIPTION	PAGE NO.	NOTICE NO.	DESCRIPTION	PAGE NO.
-	Index of Singaporean Charts	46	-	Singapore Electronic Navigational Charts (ENC) Distributors	63
-	Index of Dual Badged Charts	47			
-	Index of Singapore Electronic Navigational Charts (ENC)	48			
-	New Publication "SINGAPORE TIDE TABLES YEAR 2009"	49			
-	New Edition Singaporean Charts	50			
-	New Edition Dual Badged Charts	51			
*26	SP1/GSP1	52			
27	201	52			
28	202	52			
29T	Temporary and Preliminary Notices	53			
*30	Port Marine Notices	54			
*31	Laying of cable operation Singapore to Batam, Indonesia, in the Traffic Separation Scheme of Singapore Strait	54			
*32	Singaporean Print on Demand (POD) Charts	55			
*33	Updating of Publication "SINGAPORE PORT INFORMATION 2008/2009"	56			
-	Reprint of Radio Navigational Warnings	58			
-	Reprint of Admiralty Notices to Mariners for Dual Badged Charts	59			

\* Denotes information are based on Singapore source.

# I INDEX OF CHARTS AND PUBLICATIONS

## INDEX OF SINGAPOREAN CHARTS



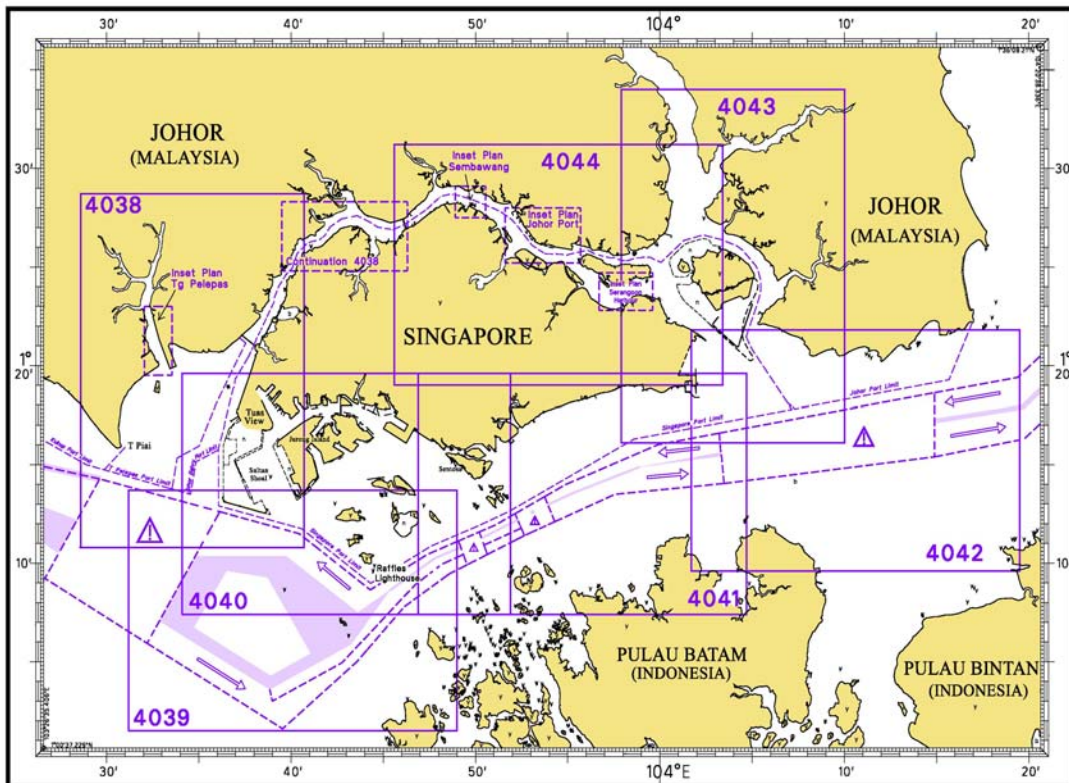
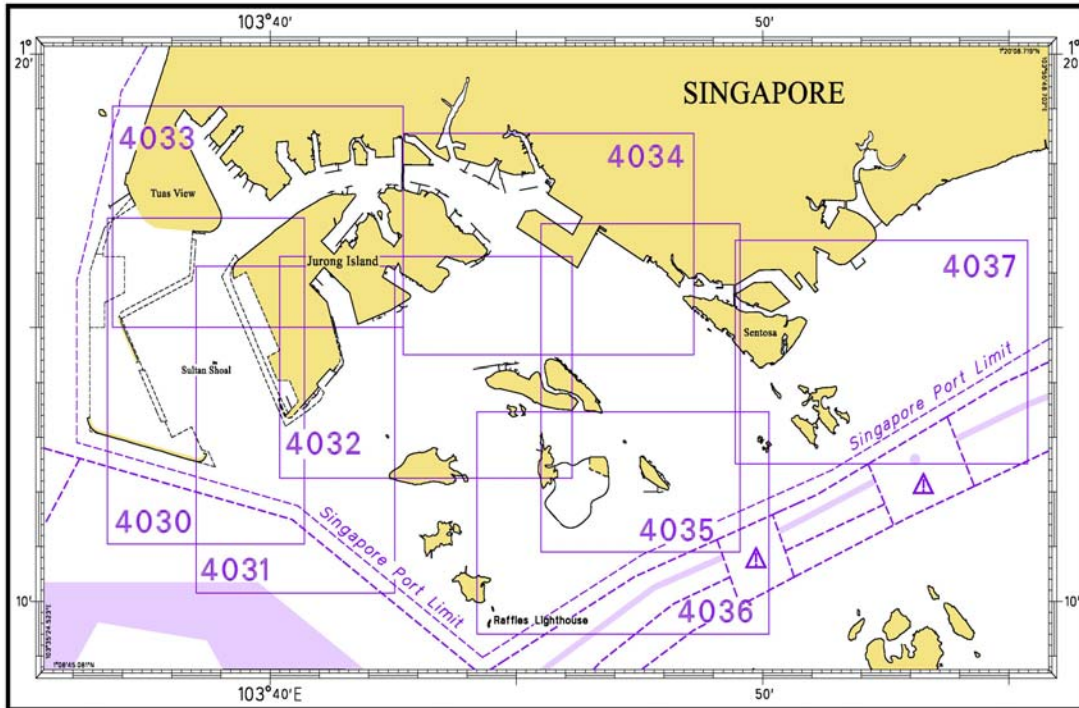
**Notes:**

Updated SINGAPOREAN Charts (excluding Charts SP1/GSP1) are available through our Print On Demand (POD) Chart Service. For more information, refer to Section III – Navigational Information and these charts can be purchased from our authorised Chart Agents:

DPM (Singapore) Pte Ltd, E.W. Liner Charts & Publications Pte Ltd and Motion Smith.

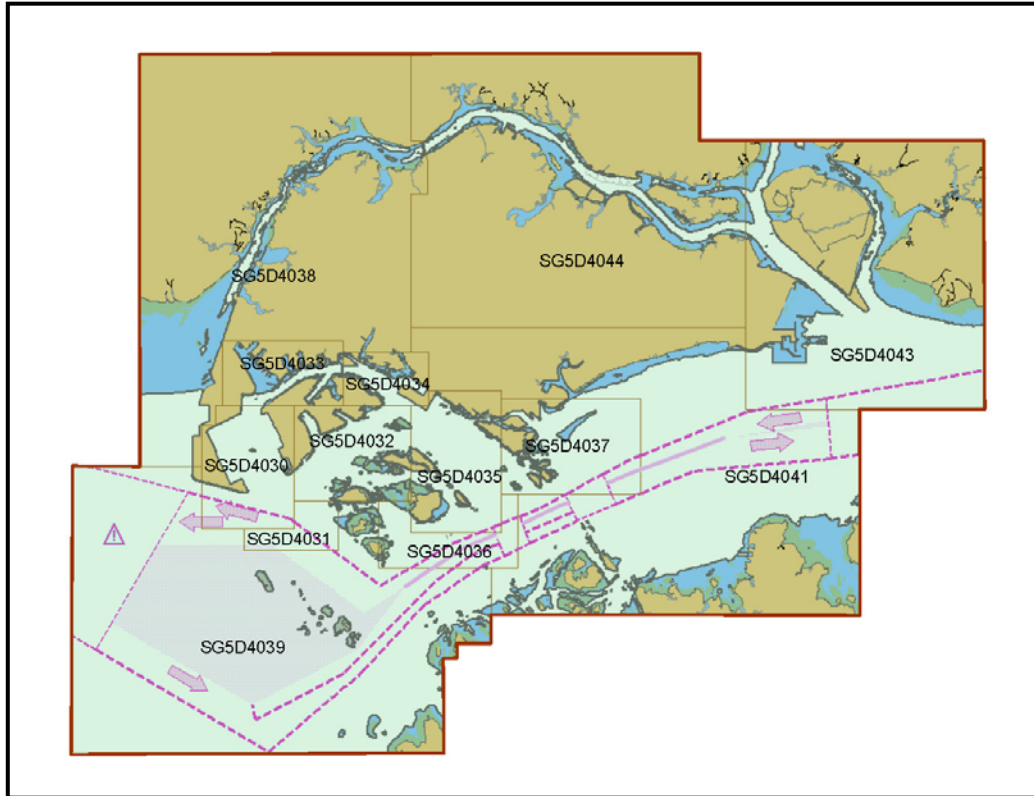
# I INDEX OF CHARTS AND PUBLICATIONS

## INDEX OF DUAL BADGED CHARTS



I  
INDEX OF CHARTS AND PUBLICATIONS

INDEX OF SINGAPORE ELECTRONIC NAVIGATIONAL CHARTS (ENC)



## II NEW PUBLICATIONS



### **SINGAPORE TIDE TABLES YEAR 2009 PUBLISHED ON 22 SEPTEMBER 2008**

#### **Summary of Publication**

- (a) This 239 page book contains the following information:  
The predictions consist of 5 main segments to facilitate easy reference:
- High and Low Water Predictions
  - Hourly Tidal Height Predictions
  - Hourly Tidal Stream Predictions
  - Maximum and Slack Tidal Stream Predictions
  - Malacca Strait – High and Low Water Predictions
- The predictions cover stations in Singapore and selected stations along the Malacca Strait.
- (b) As in earlier publications, the presentation of the predictions is enhanced with colour codes so as to differentiate the various states of tidal heights, eg falling or rising tide and tidal stream directions. Moon phases, eg full and new moon, are also included in each calendar month to complement the prediction values.
- (c) The tidal heights are given in metres above Chart Datum (CD). The CD is the datum of soundings shown on the Singaporean Charts and Dual Badged Charts covering the area. A table showing the various tidal levels eg. Mean High Water Springs, Mean Low Water Springs etc, at various stations with reference to CD is also included in this publication.

#### **To Whom Will It Be Useful?**

Mariners, shipping community, port users and other interested users.

#### **Frequency of Publication**

Annually.

#### **Cost of Publication**

To be advised by Chart Agents.

#### **Order Enquires:**

This publication is available from the following Chart Agents:

- 1) DPM (Singapore) Pte Ltd
  - 2) E.W. Liner Charts & Publications Pte Ltd
  - 3) Motion Smith
- (Please refer to Page 64 for details.)
-

## II NEW PUBLICATIONS

### NEW EDITION SINGAPOREAN CHARTS PUBLISHED ON 15 JANUARY 2009

Chart Number : SP1  
 Title : Anchorages and Aids to Navigation  
 Coverage : Lat 1° 08.20' N 1° 29.40' N  
 Long 103° 35.70' E 104° 07.20' E  
 Scale : 1 : 60 000  
 Date Published : 15 January 2009  
 Size of Chart : 973.9 X 651.2mm  
 Remarks : This new edition includes revised anchorages, new topography, submarine cables, aids to navigation and depth contours covering the entire chart.  
 This new edition supersedes the earlier edition published on 31 January 2008.

Chart Number : GSP1  
 Title : Anchorages and Aids to Navigation (with area reference)  
 Coverage : Lat 1° 08.20' N 1° 29.40' N  
 Long 103° 35.70' E 104° 07.20' E  
 Scale : 1 : 60 000  
 Date Published : 15 January 2009  
 Size of Chart : 973.9 X 651.2mm  
 Remarks : This new edition includes revised anchorages, new topography, submarine cables, aids to navigation and depth contours covering the entire chart.  
 This new edition supersedes the earlier edition published on 31 January 2008.

### NEW EDITION SINGAPOREAN CHART PUBLISHED ON 15 JANUARY 2009

Chart Number : CHARTS FOR SMALL CRAFT  
 Title : Singapore Strait and Adjacent Waterways – 2009/2010 Edition  
 Date Published : 15 January 2009  
 Size of chart : 600 x 400 mm  
 Remarks : The publication contains 19 Small Craft Charts and related nautical information bound into an atlas measuring 600 x 400 mm. The pages are laminated to prevent damage from seawater.  
 The symbols, abbreviations and term depicted on these charts are consistent with the International Hydrographic Organization Chart Standards and Specifications.  
 Symbols for the locations of pleasure craft facilities and areas for sea sport activities such as board sailing, dinghy sailing, keelboat sailing, power-boating and water-skiing are also included and highlighted in red.  
 Chart of the same publication Edition 2007 published on 31 January 2007 would be superseded.

## II NEW PUBLICATIONS

### NEW EDITION DUAL BADGED CHARTS PUBLISHED ON 19 FEBRUARY 2009

The following new edition charts are jointly produced by MPA, Hydrographic Department and the United Kingdom Hydrographic Office :

Chart Number	:	4034
Title	:	Port of Singapore – East Jurong Channel, Pasir Panjang Terminal and West Keppel Fairway
Coverage	:	Lat 1° 14.50' N 1° 18.55' N Long 103° 42.70' E 103° 48.60' E
Scale	:	1 : 10 000
Date Published	:	19 February 2009
Size of Chart	:	1094.3 X 746.3mm
Remarks	:	This new edition includes area to be reclaimed and working area in the approaches to Pasir Panjang Terminal. Caution notes were added. This edition also includes updated surveys covering these areas : <ul style="list-style-type: none"> <li>• West of Sentosa.</li> <li>• Sungei Jurong.</li> <li>• North East of Jurong Island.</li> <li>• Off Tanjong Penjuru.</li> <li>• West Keppel Fairway.</li> <li>• Approaches to Pasir Panjang Terminal.</li> </ul>

The existing chart of the same number published on 24 July 2008 is superseded.

Chart Number	:	4035
Title	:	Port of Singapore – Western Anchorage, Jong Fairway and Cruise Bay
Coverage	:	Lat 1° 10.90' N 1° 16.90' N Long 103° 45.50' E 103° 49.54' E
Scale	:	1 : 10 000
Date Published	:	19 February 2009
Size of Chart	:	749.4 X 1105.7mm
Remarks	:	This new edition includes area to be reclaimed and working area in the approaches to Pasir Panjang Terminal. Caution notes were added. This edition also includes updated surveys covering these areas : <ul style="list-style-type: none"> <li>• West of Sentosa.</li> <li>• Shell SBM Area.</li> <li>• North of Pulau Jong.</li> <li>• West Keppel Fairway.</li> <li>• Approaches to Pasir Panjang Terminal.</li> </ul>

The existing chart of the same number published on 24 July 2008 is superseded.

**II**  
**NOTICES TO MARINERS AND CHART CORRECTIONS**

**SP1/GSP1**      4Ed 15/1/09 Last NM 14/2009      (HD/HE025/28/2009)      **\*NM 26/2009**

**Insert**       **Fl.Y.10s AZ4**      1°15·23'N      103°48·58'E

---

**201**      3Ed 5/10/07 Last NM 19/2009      (Royal Malaysian Navy  
Notices No. 1/37/2009)      **NM 27/2009**

**Substitute**      **Fl(2)10s16m28M** for Fl(2)10s28m16M      1°35·47'N      102°46·70'E

---

**202**      5Ed 19/10/06 Last NM 20/2009      DGST Indonesia No. 30/2009      **NM 28/2009**

**Insert**      legend '**(collapsed)**'      0°56·33'N      104°21·18'E

---

**II**  
**TEMPORARY AND PRELIMINARY NOTICES**

**201**

3Ed 5/10/07 Last NM 19/2009 (Royal Malaysian Navy  
Notices 1/34T/2009)

**NM 29T/2009**

**Insert**

Legend, (*Unlit*) for Buoy *FI(2)10s*

01°58·10'N

102°14·20'E

---

### III NAVIGATIONAL INFORMATION

#### \*(NM 30/2009) PORT MARINE NOTICES

The following PMNs have been shortlisted, as they would be of particular interest to mariners.

These notices can be accessed directly from MPA website:

[http://www.mpa.gov.sg/circulars\\_and\\_notices/portmarine\\_notices/pm\\_notices.htm](http://www.mpa.gov.sg/circulars_and_notices/portmarine_notices/pm_notices.htm)

PMN No.	Subject
12/2009	Marine construction and dredging works at ExxonMobil Pesek Berth 6.
13/2009	Dredging and marine construction works at Sungei Serangoon.
16/2009	Marine construction works off Marina Barrage.
18/2009	Reclamation at Pasir Panjang Terminal and Pasir Panjang Panjang Wharves.
20/2009	Installation of additional fenders and cat-ladders at Berth 9, Brani Terminal.
25/2009	A) Maintenance dredging works at Tanjong Pagar, Keppel and Brani Terminals. B) Upgrading of Berth K12 at Keppel Terminal.

#### \*(NM 31/2009) LAYING OF CABLE OPERATION SINGAPORE TO BATAM, INDONESIA, IN THE TRAFFIC SEPARATION SCHEME OF SINGAPORE STRAIT

**Date :** With effect from 15 October 2008 to 31 March 2009

- Cable laying, Jakarta-Batam-Singapore (JAKABARE) and associated operations are in progress between the following positions (in WGS84) :

1°17.064'N	104°09.244'E
1°17.002'N	104°09.291'E
1°16.898'N	104°09.370'E
1°16.820'N	104°09.429'E
1°16.760'N	104°09.475'E
1°16.609'N	104°09.589'E
1°16.539'N	104°09.642'E
1°16.384'N	104°09.759'E
1°16.138'N	104°09.858'E
1°15.949'N	104°10.045'E
1°15.868'N	104°10.325'E
1°15.757'N	104°11.118'E
1°15.622'N	104°11.449'E
1°15.504'N	104°11.600'E
1°15.089'N	104°11.797'E
1°15.054'N	104°11.813'E
1°15.041'N	104°11.817'E

- Cable laying, Batam Singapore Cable System (BSCS) and associated operations are in progress between the following positions (in WGS84) :

1°17.078'N	104°08.968'E
1°17.113'N	104°09.146'E
1°16.995'N	104°09.197'E

### III NAVIGATIONAL INFORMATION

1°16.974'N	104°09.206'E
1°16.861'N	104°09.254'E
1°16.807'N	104°09.277'E
1°16.702'N	104°09.322'E
1°16.607'N	104°09.364'E
1°16.448'N	104°09.433'E
1°16.098'N	104°09.584'E
1°16.023'N	104°09.570'E
1°15.976'N	104°09.561'E
1°15.914'N	104°09.592'E
1°15.828'N	104°09.696'E
1°15.777'N	104°09.932'E
1°15.755'N	104°10.282'E
1°15.643'N	104°11.080'E
1°15.377'N	104°11.430'E
1°15.083'N	104°11.462'E
1°15.057'N	104°11.465'E
1°14.999'N	104°11.459'E

3. Charts affected : 502

4. Mariners are advised

(a) to navigate with caution

(b) not to anchor or trawl in the vicinity of the cable route.

Source : HD/DB67/029/2008

\*(NM 32/2009)      **SINGAPOREAN PRINT ON DEMAND (POD) CHARTS**

**Print On Demand (POD)** Charts are the most up-to-date paper nautical charts printed for navigational use. These nautical charts are produced in accordance with the International Hydrographic Organisation (IHO) charting specifications. These official nautical charts are continually updated to the latest Notices to Mariners before they are printed and sold to users.

These POD Charts include 200, 201, 202, 500, 501, 502, 503.

#### **BENEFITS TO OUR CUSTOMERS**

##### **Convenience**

Customers need not make numerous hand corrections to the nautical charts before use. In addition the updated POD Charts are more accurate and reliable than offset printed charts with hand corrections.

##### **Clarity**

Clarity in the presentation of updated information as compared to lithographic printed charts, where in some cases there are several overlapping corrections over existing information.

##### **Coverage**

The POD Charts cover the Malacca and Singapore Straits, from One Fathom Bank to Horsburgh Lighthouse.

**III**  
**AMENDMENTS TO PUBLICATIONS**

**\*(NM 33/2009) UPDATING OF PUBLICATION “SINGAPORE PORT INFORMATION 2008/2009 EDITION”**

1 Page 133 – Item 1

**TANJONG PAGAR TERMINAL (PSA Corporation Ltd)(1°16-0’N, 103°51-0’E)**

Insert the following:

Berth	Depth Alongside (Year Surveyed)	
	Delete	Insert
<b>Feeder Berth T4</b>	11.0m(2002)	<b>11.0m(2008)</b>

Source: HD/HY Code B00106308

2 Page 134 – Item 2

**KEPPEL TERMINAL (PSA Corporation Ltd)(1°16-0’N, 103°50-0’E)**

Insert the following:

Berth	Depth Alongside (Year Surveyed)	
	Delete	Insert
<b>K10</b>	11.0m(2002)	<b>11.0m(2008)</b>
<b>K12</b>	14.6m(2002)	<b>15.5m(2008)</b>
<b>K15</b>	11.0m(2002)	<b>11.0m(2008)</b>
<b>K21</b>	9.6m(2007)	<b>10.0m(2008)</b>
<b>K22</b>	9.7m(2007)	<b>10.1m(2008)</b>

Source: HD/HY Code B00106208, B00107008, B00107108, B00107208

3 Page 136 – Item 3

**BRANI TERMINAL (PSA Corporation Ltd)(1°15-7’N, 103°50-2’E)**

Insert the following:

Berth	Depth Alongside (Year Surveyed)	
	Delete	Insert
<b>B3</b>	11.4m(2003)	<b>12.0m(2008)</b>
<b>B4</b>	13.1m(2007)	<b>15.0m(2008)</b>

Source: HD/HY Code B00106708, B00108908

4 Page 145 – Item 20

**JURONG TERMINAL (JURONG PORT PTE LTD)(1°18-3’N, 103°43-1’E)**

Delete the following:

Berth	Length of Berth	Max LOA	Depth Alongside (Year Surveyed)	Controlling Depth In Approaches
<b>J12</b>	350m	200m	9.3(2007)	11.6m

**III**  
**AMENDMENTS TO PUBLICATIONS**

Insert the following:

<b>Berth</b>	<b>Length of Berth</b>	<b>Max LOA</b>	<b>Depth Alongside (Year Surveyed)</b>	<b>Controlling Depth In Approaches</b>
<b>J12A</b>	<b>160m</b>	<b>-</b>	<b>9.8(2008)</b>	<b>11.6m</b>
<b>J12B</b>	<b>190m</b>	<b>-</b>	<b>10.6(2008)</b>	<b>11.6m</b>

Source: HD/HY Code J00105308

**IV**  
**REPRINT OF RADIO NAVIGATIONAL WARNINGS**

TT173

VSLS IN EAST JOHOR STRAIT ADVISED TO NAVIGATE WITH CAUTION WHEN NEAR THE PROJECT AREAS OFF PU.TEKONG, PU.SERANGOON, CHANGI AND MALANG PAPAN AS SHALLOW WATER AREAS EXIST. VSLS ADVISED TO KEEP LOOKOUT FOR TUGS AND BARGES NAVIGATING NEAR THE PROJECT AREAS AND PASSENGER FERRIES CROSSING BETWEEN CHANGI AND PULAU TEKONG AND VICINITY OF PASIR GUDANG

TT763

13 FEB 2009 0745UTC

VISIBILITY IN THE SINGAPORE STRAIT AND PORT WATERS IS REDUCED BY HAZE. VESSELS ADVISED TO NAVIGATE WITH EXTRA CAUTION

TT757

A TUG WAS REPORTED SUNK IN LAT 01°22.41' N LONG 104°23.15' E. VSLS ARE ADVISED TO NAVIGATE WITH CAUTION.

TT755 (AMENDED MESSAGE-180109 1314Z)

THE POSITION OF THE PROBABLE SUNKEN CRAFT IS LAT 01°18.71' N LONG 104°21.54' E WITH A LEAST DEPTH OF 57METRES.

TT753

A SMALL WODDEN CARGO BOAT ABT 10M IN-LENGTH SUNK AT POSN 01°15.73' N 103°32.1' E.

TT631

A WOODEN CRAFT SUNK IN APPROX POSN 01°19.49'N 104° 02.79'E.

TT619

DREDGER GERARDUS MERCATOR IS CONDUCTING DREDGING OPS IN THE AREA BOUNDED BY COORDINATES:

01°15.827' N 103°57.737' E

01°14.865' N 103°58.134' E

01°13.298' N 103°54.401' E

01°13.884' N 103°54.131' E

VSLS ADVISED TO PROCEED AT SAFE SPEED AND GIVE WIDE BERTH.

ISSUED BY SINGAPORE PORT OPERATION CONTROL CENTRE

(as at 15 February 2009 1300hrs)

-----  
TELEGRAM FROM  
DEPARTEMEN PERHUBUNGAN  
DIREKTORAT JENDERAL PERHUBUNGAN LAUT NO. 030

NR: 16/DV-09            DATED 14.01.2009

REF TO OUR TTT NAVIGATION NR. 254/DV-08 DATED 14112008 STOP

TERKULAI RED SINGLE PIPE LIGHT BEACON. 6M WITH CYLINDER TOP MARK ILL NR. 1031 AT POSITION 0°56'10.7" N / 104°21'10.7" E WAS REPORTED COLLAPSED STOP.

**V**  
**REPRINT OF ADMIRALTY NOTICES TO MARINERS**  
**FOR DUAL BADGED CHARTS**

**These notices can be accessed directly from UKHO Website:**

<http://www.ukho.gov.uk/amd/weeklyNms.asp>

**577\* SINGAPORE – Sinki Fairway – Sakra Basin – Dredged depths.**

Source: Maritime and Port Authority of Singapore

Note: This update will be included in a New Edition of Chart 4034 to be published 19 February 2009.

**Chart 4032** [ *previous update 4247/08* ] WGS84 DATUM

Amend	dredged depth to, <i>12.1m (2008)</i> , centred on:	1° 15'.896N., 103° 42'.751E.
	dredged depth to, <i>12.0m (2008)</i> , centred on:	1° 15'.942N., 103° 42'.667E.

**578\* SINGAPORE – Jurong Island – Sinki Fairway – Banyan Basin – Jetty. Dredged depths. Depths. Coastline. Works.**

Source: Maritime and Port Authority of Singapore

**Chart 4031** [ *previous update 4247/08* ] WGS84 DATUM

Insert	the accompanying block, showing new jetty and amendments to dredged depths, depths, coastline and works, centred on:	1° 15'.800N., 103° 41'.050E.
--------	--	------------------------------

**Chart 4032** [ *previous update 577/09* ] WGS84 DATUM

Insert	the accompanying block, showing new jetty and amendments to dredged depths, depths, coastline and works, centred on:	1° 15'.800N., 103° 41'.050E.
--------	--	------------------------------

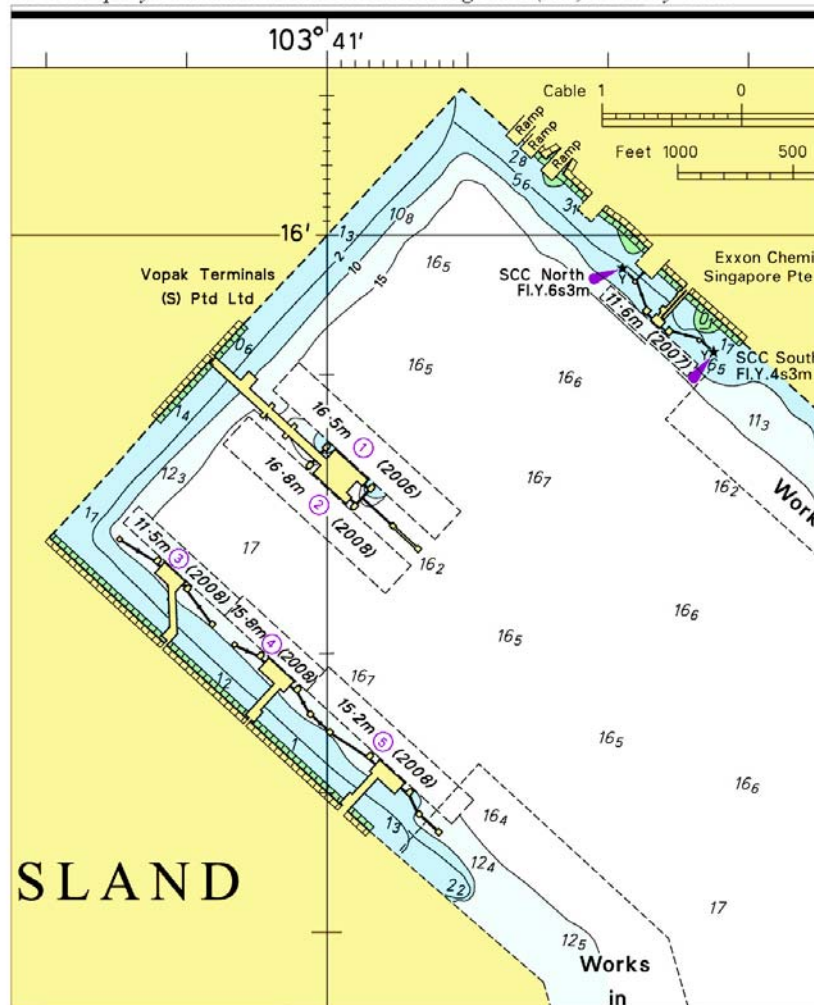
**Chart 4033** [ *previous update 5024/08* ] WGS84 DATUM

Insert	the accompanying block, showing new jetty and amendments to coastline centred on:	1° 15'.750N., 103° 40'.950E.
--------	---	------------------------------

Updated to Admiralty Notices to Mariners Edition No. 9 of 2009 dated 26 February 2009.

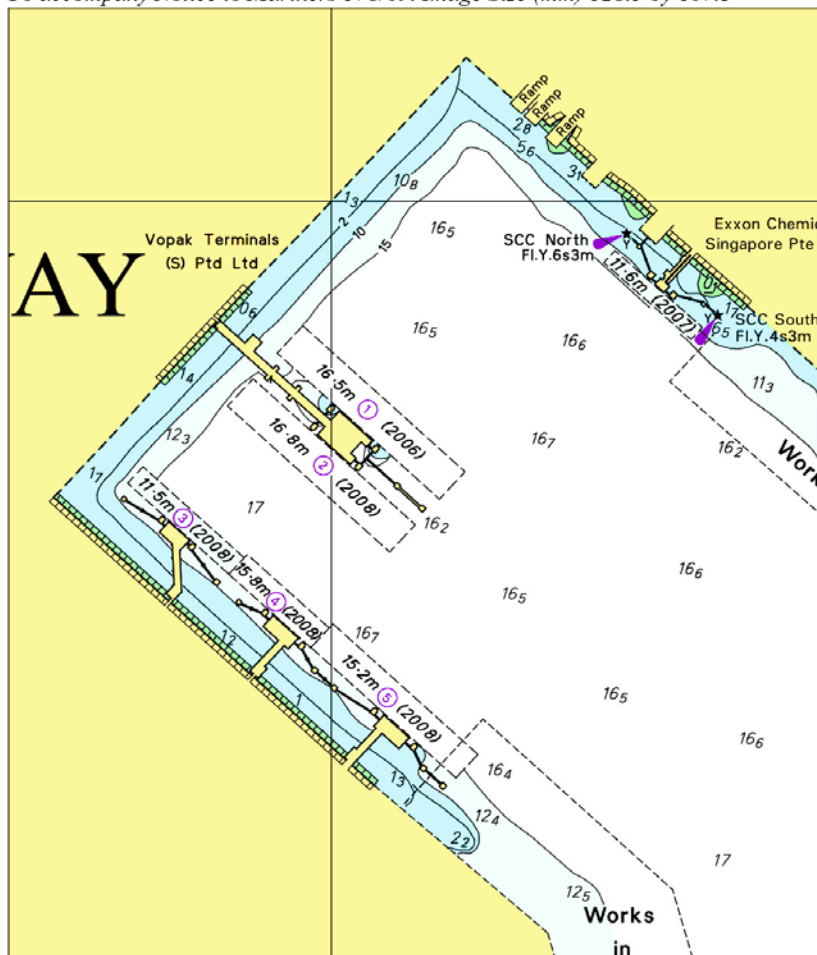
V  
REPRINT OF ADMIRALTY NOTICES TO MARINERS  
FOR DUAL BADGED CHARTS

To accompany Notice to Mariners 578/09. Image Size (mm) 132.7 by 106.9



V  
REPRINT OF ADMIRALTY NOTICES TO MARINERS  
FOR DUAL BADGED CHARTS

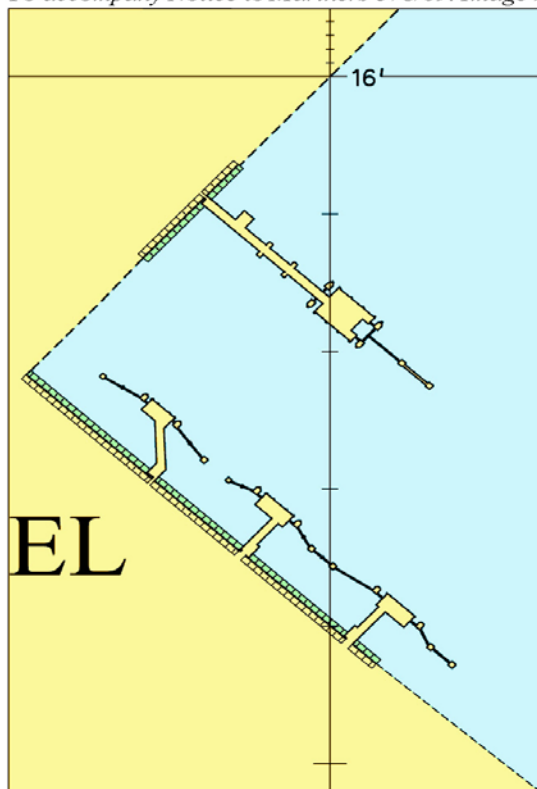
To accompany Notice to Mariners 578/09. Image Size (mm) 128.5 by 107.3



Block for Chart No 4032

V  
REPRINT OF ADMIRALTY NOTICES TO MARINERS  
FOR DUAL BADGED CHARTS

To accompany Notice to Mariners 578/09. Image Size (mm) 105.4 by 64.5



Block for Chart No 4033

**SINGAPORE ELECTRONIC NAVIGATIONAL CHARTS (ENC) DISTRIBUTORS**  
Please approach any of the appointed distributors to purchase the Singapore ENC.

<b>CONTACT PERSON/ DESIGNATION</b>	<b>ADDRESS</b>	<b>TELEPHONE/FAX NO./EMAIL/WEBSITE</b>
Mr Chong Chee Meng General Manager	DPM (Singapore) Pte Ltd 1 Maritime Square, #09-72 Harbour Front Centre, Singapore 099253	Tel. No.: +65 6270 4060 Fax No.: +65 6276 3858 Email: <a href="mailto:sales@dpmsingapore.com.sg">sales@dpmsingapore.com.sg</a> Website: <a href="http://www.dpmsingapore.com.sg">http://www.dpmsingapore.com.sg</a>
Mr Hamzah Akhbar MDS Branch Manager	Kelvin Hughes(S) Pte Ltd 8 Pandan Avenue #02-00, Singapore 609384	Tel. No.: +65 6545 9880 ext.24 Fax No.: +65 6545 8892 Email: <a href="mailto:hamzah.akhbar@khsing.com">hamzah.akhbar@khsing.com</a> Website: <a href="http://www.kelvinhughes.co.uk">http://www.kelvinhughes.co.uk</a>
Mr Looi Keen Wai Regional Sales Manager	Maritime Information Systems (MARIS) 52, Telok Blangah Road #01-06, Telok Blangah Centre, Singapore 058809	Tel. No.: +65 6276 1472 Fax No.: +65 6276 1473 Email: <a href="mailto:support@maris.sg">support@maris.sg</a> Website: <a href="http://www.maris.no">http://www.maris.no</a>
Ms Kathrine Bjaroy Marketing Coordinator	Maritime Information System AS (MARIS) Danholmen 25, 3128 Notteroy, Norway	Tel. No.: +47 33 30 42 50 Fax No.: +47 33 30 42 51 Email: <a href="mailto:roar.moe@maris.no">roar.moe@maris.no</a> Website: <a href="http://www.maris.no">http://www.maris.no</a>
Mr Bernard Wong Sales Manager	Motion Smith 15 Jalan Kilang Barat #08-01/05 Frontech Centre Singapore 159357	Tel. No.: +65 6220 5098 Fax No.: +65 6225 4902 Email: <a href="mailto:sales@motsmith.com">sales@motsmith.com</a> Website: <a href="http://www.motsmith.com">http://www.motsmith.com</a>
Mr Dominic Oliver	Transas Marine Pacific Pte Ltd 750C Chai Chee Road, #04-07, Technopark@Chai Chee, Singapore 469003	Tel. No.: +65 6443 3061 Fax No.: +65 6443 3025 Email: <a href="mailto:dominic@transas.com.sg">dominic@transas.com.sg</a> Website: <a href="http://www.transas.com.sg">http://www.transas.com.sg</a>
Mr Choy Kum Weng Director	Vector Services Pte Ltd 15 West Coast Highway, #02-14A Pasir Panjang Building Singapore 117861	Tel. No.: +65 6777 3602 Fax No.: +65 6777 9203 Email: <a href="mailto:kwchoy@pacific.net.sg">kwchoy@pacific.net.sg</a>
Mr George Arts President	Marine Press of Canada 640 Rue St-Paul Ouest, Suite 300 Montreal (QC) Canada, H3C1L9	Tel. No.: (514) 866-8342 Fax No.: (514) 866-9050 Email : <a href="mailto:sales@marinepress.com">sales@marinepress.com</a> Website: <a href="http://www.marinepress.com">http://www.marinepress.com</a>
Mr Thomas Wilde Superintendent	HanseNautic GmbH Bade & Hornig, Eckardt & Messtorff Herrengaben 31 D-20459 Hamburg, Germany	Tel. No.: +49 40 374 811-32 Fax No.: +49 40 366 400 Email: <a href="mailto:wilde@hansenautic.de">wilde@hansenautic.de</a> Website : <a href="http://www.HanseNautic.com">http://www.HanseNautic.com</a>
Ms Verena Borsos Manager	SevenCs AG + Co. KG Ruhrstrasse 90, D-22761 Hamburg, Germany	Tel. No.: +49 40 853 58 6940 Fax No.: +49 40 853 58 6949 Email: <a href="mailto:sales@chartworld.com">sales@chartworld.com</a> Website : <a href="http://www.sevencs.com">http://www.sevencs.com</a>
Mr Keiji Shimizu General Manager	Japan Hydrographic Association Electronic Charts Division Daiichi Sogo Bldg, 6F 1-6-6, Hanedakuko, Ota-ku, Tokyo 144-0041, Japan	Tel. No.: +81 3 5708 7093 Fax No.: +81 3 5708 7094 Email: <a href="mailto:enc-support@jha.jp">enc-support@jha.jp</a> Website: <a href="http://www.jha.jp">http://www.jha.jp</a>

**SINGAPORE ELECTRONIC NAVIGATIONAL CHARTS (ENC) DISTRIBUTORS**  
Please approach any of the appointed distributors to purchase the Singapore ENC.

<b>CONTACT PERSON/ DESIGNATION</b>	<b>ADDRESS</b>	<b>TELEPHONE/FAX NO./EMAIL/WEBSITE</b>
Mr Jester-Kim Foreign Business Department Manager	E_MLX Co. Ltd Ssangyong Research No.2 Lab Sinseong-Dong 100 Yusong-Gu, Daejoen 305-804, Korea (ROK)	Tel. No.: +82 42 865 1893 Fax No.: +82 42 865 1884 Email: <a href="mailto:Jester-kim@emlx.co.kr">Jester-kim@emlx.co.kr</a>
Mr C G Kim Managing Director	Korean Ocean Development Co. Ltd 2ND Fl, Dongbang Bldg, 25-4, 4 Ga Jungang-Dong, Jung-Gu, Busan, South Korea	Tel. No.: +82 514 66 0760 Fax No.: +82 514 65 9345 Email: <a href="mailto:sales@chartkorea.com">sales@chartkorea.com</a> Website: <a href="http://www.chartkorea.com">http://www.chartkorea.com</a>
Mr Kjell Nodland	Jeppesen Norway A/S P.O Box 212 , N-4379 Egersund, Norway	Tel No.: +47 514 64 700 Fax No: +47 514 64 701 Email: <a href="mailto:enc@c-map.no">enc@c-map.no</a> Website : <a href="http://www.c-map.no">http://www.c-map.no</a>
Ms Eva Hegland Sales, order and distributor support.	PRIMAR STAVANGER Lervigsveien 36, P.O Box 60, N-4001 Stavanger, Norway	Tel. No.: +47 51 93 9500 Fax No.: +47 51 93 9501 Email: <a href="mailto:sales@primar.org">sales@primar.org</a> Website : <a href="http://www.primar-stavanger.org">http://www.primar-stavanger.org</a>
Mrs Christine Trickett Product Manager	United Kingdom Hydrographic Office Admiralty Way, Taunton, Somerset TA1 2DN United Kingdom	Tel. No.: +44 (0)1823 337900 Fax No.: +44 (0)1823 284077 Emails: <a href="mailto:vargroup@ukho.gov.uk">vargroup@ukho.gov.uk</a> & <a href="mailto:christine.trickett@ukho.gov.uk">christine.trickett@ukho.gov.uk</a> Website: <a href="http://www.ukho.gov.uk">http://www.ukho.gov.uk</a>

### Agents for the Maritime and Port Authority of Singapore Publications

**Agent's name** : **DPM (Singapore) Pte Ltd**  
**Address** : 1 Maritime Square #09-72, HarbourFront Centre,  
Singapore 099253  
**Telephone** : (65) 6270 4060  
**Fax No.** : (65) 6276 3858  
**E-mail** : [sales@dpmsingapore.com.sg](mailto:sales@dpmsingapore.com.sg)  
**Internet Web Site** : <http://www.dpmsingapore.com.sg>

**Agent's name** : **E.W. Liner Charts & Publications Pte Ltd**  
**Address** : 102F, Pasir Panjang Road, #08-01, Citilink Warehouse Complex,  
Singapore 118530  
**Telephone** : (65) 6323 0773  
**Fax No.** : (65) 6323 0775  
**E-mail** : [ewliner@singnet.com.sg](mailto:ewliner@singnet.com.sg)  
**Internet Web Site** : <http://www.ewliner.com>

**Agent's name** : **Motion Smith**  
**Address** : 15 Jalan Kilang Barat  
#08-01/05 Frontech Centre,  
Singapore 159357  
**Telephone** : (65) 6220 5098  
: (After office hours: 8163 9993)  
**Fax No.** : (65) 6225 4902  
**E-mail** : [sales@motsmith.com](mailto:sales@motsmith.com)  
**Internet Web Site** : <http://www.motsmith.com>

## HYDROGRAPHIC NOTE - Instructions

1. Mariners are requested to notify the Chief Hydrographer, Maritime and Port Authority of Singapore, when new or suspected dangers to navigation are discovered, changes are observed in aids to navigation or where corrections to nautical publications may be necessary. Reports, which cannot be confirmed or are lacking in certain details should not be withheld.
2. Any ambiguities of time, positioning and depth should be stressed and any firm expectation of being able to check the information provided on a following voyage should be mentioned.
3. Mariners using satellite position fixing systems, eg. GPS, should provide details of equipment and datum used (where applicable). Where bearings (true or magnetic) are taken visually or by radar to fix a position, it should include more than two objects in order to provide a check on its accuracy. A position may also be defined by bearing and distance from a conspicuous object eg. beacon, lighthouse etc.
4. The note should include a tracing or a digital image of the chart used and the details should be clearly marked.
5. Echo sounders frequently register greater depths than the advertised maximum depth for the equipment, eg. a trace appearing at 50 metres may be in fact be 550 metres or even 1050 metres for equipment whose maximum depth is 500 metres. Erroneous depths caused by 2nd transmission error can usually be recognised by the following:
  - (a) the tracing being weaker than normal for the depth registered,
  - (b) the trace appearing to pass through the transmission line,
  - (c) the feathery nature of the trace.
6. An acknowledgement of receipt will be sent. When a Notice to Mariners is issued, the sender's vessel or name is quoted as the source unless the same information is also received in foreign Notices to Mariners.
7. Reports of shoals, uncharted dangers and defects in aids to navigation may also be made to the appropriate Singapore Port Operations Control Station on VHF Channels 10, 12, 14, 68 or 73.

**HYDROGRAPHIC NOTE**

To:

Chief Hydrographer  
Hydrographic Department  
Maritime and Port Authority of Singapore  
460 Alexandra Road PSA Building #20-00  
Singapore 119963

Tel : (65) 6375 1227  
Fax : (65) 6278 7646  
Email : [hydrographic@mpa.gov.sg](mailto:hydrographic@mpa.gov.sg)

**Sender's Contact Details** :

Date : .....

Name of Vessel : .....

Address of Sender : .....

Tel : ..... Fax : .....

Email : .....

**Nature of Observation** :

General Location : .....

Subject : .....

Position : Lat. .... Long. ....

Charts Used : .....

Date & Time of Observation : .....

Details : .....

.....

.....

.....

Attachment : .....

**Equipment Used** :

Type of Position Fixing : ..... GPS / DGPS ..... Others : .....

Type of Echo Sounder : .....

Name and Signature : .....

Ship's/Company's stamp : .....