



SINGAPOREAN NOTICES TO MARINERS

| SECTION | CONTENT | Page |
|---------|---|------|
| I | Index of Charts & Publications | 48 |
| II | New Publications | 53 |
| | Notices to Mariners and Chart Corrections | 54 |
| | Temporary and Preliminary Notices | 55 |
| III | Navigational Information | 56 |
| | Amendments to Publications | 57 |
| IV | Reprint of Radio Navigational Warnings | 59 |
| V | Reprint of Admiralty Notices to Mariners for Dual Badged Charts | 60 |

The monthly Notices to Mariners contain corrective information affecting charts published by the Hydrographic Department, Maritime and Port Authority of Singapore. The information contained in these Notices should be updated on the charts affected. Notices under Section II apply only to the particular Singaporean Chart(s) indicated.

Mariners are requested to notify the Chief Hydrographer, Maritime and Port Authority of Singapore, immediately on the discovery of new dangers or suspected dangers to navigation and of changes or defects in aids to navigation. See Hydrographic Note on back page.

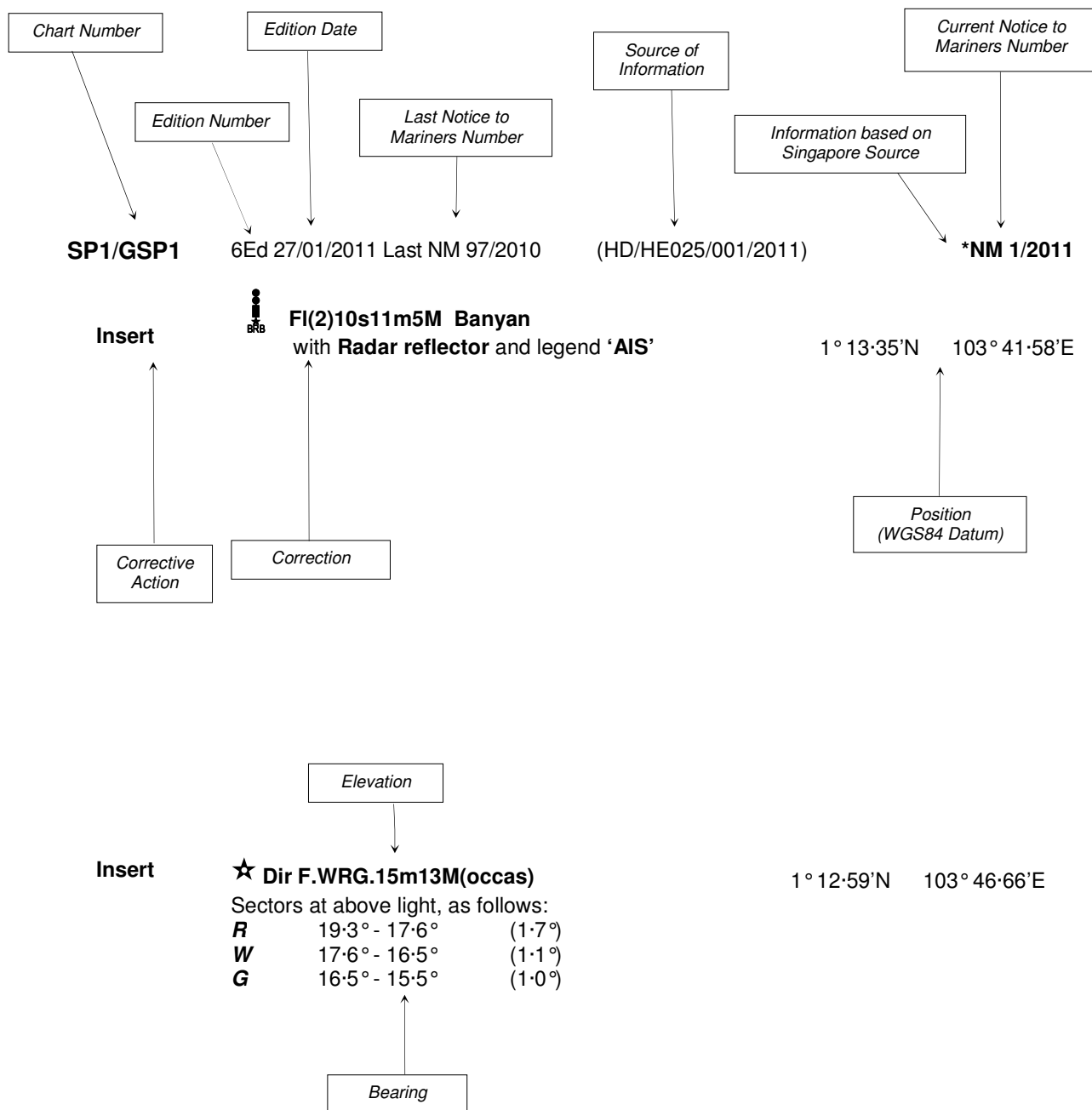
The monthly Singaporean Notices to Mariners can be accessed directly from the MPA website:
[http://www.mpa.gov.sg/sites/port_and_shipping/circulars_and_notices/singapore_notices_to_mariners\(ntm\).page](http://www.mpa.gov.sg/sites/port_and_shipping/circulars_and_notices/singapore_notices_to_mariners(ntm).page)

This service is offered free of charge.

Hydrographic Department
Maritime and Port Authority of Singapore
460 Alexandra Road
PSA Building #20-00
Singapore 119963
Tel: (65) 6375 1227
Fax: (65) 6278 7646

EXPLANATION OF FORMAT

The elements of a typical chart correction are explained below.



Notes:

- a) Notice to Mariners number followed by:
T indicates a Temporary Notice (eg. ***NM 2T/2011**).
P indicates a Preliminary Notice (eg. ***NM 3P/2011**).
- b) Bearings are true reckoned clockwise from 000° to 359°; those relating to lights are from seaward.
- c) Heights and elevations are above Mean High Water Springs.

I
INDEX OF CHARTS AND PUBLICATIONS

INDEX OF AFFECTED CHARTS

| DESCRIPTION | NOTICE NO. | PAGE NO. |
|--|--------------|----------|
| Index of Singaporean Charts | - | 50 |
| Index of Dual Badged Charts | - | 51 |
| Index of Singapore Electronic Navigational Chart (ENC) | - | 52 |
| New Edition Singaporean Charts | - | 53 |
| Singaporean Chart SP1/GSP1 | 23, *24, *25 | 54 |
| Singaporean Chart 202 | 26 | 54 |
| Singaporean Chart 501 | *25 | 54 |
| Singaporean Chart 502 | 23 | 54 |
| Temporary and Preliminary Notices | 27T | 55 |
| Port Marine Notices | *28 | 56 |
| Singaporean Print-On-Demand (POD) Charts | *29 | 56 |
| Amendments to Publications | *30 | 57 |
| Reprint of Radio Navigational Warnings | - | 59 |
| Reprint of Admiralty Notices to Mariners for Dual Badged Charts | - | 60, 61 |
| Singapore Electronic Navigational Chart (ENC) Distributors | - | 62 |
| Chart Agents for the Maritime and Port Authority of Singapore Nautical Charts and Publications | - | 63 |

*Denotes information are based on Singaporean source.

I
INDEX OF CHARTS AND PUBLICATIONS

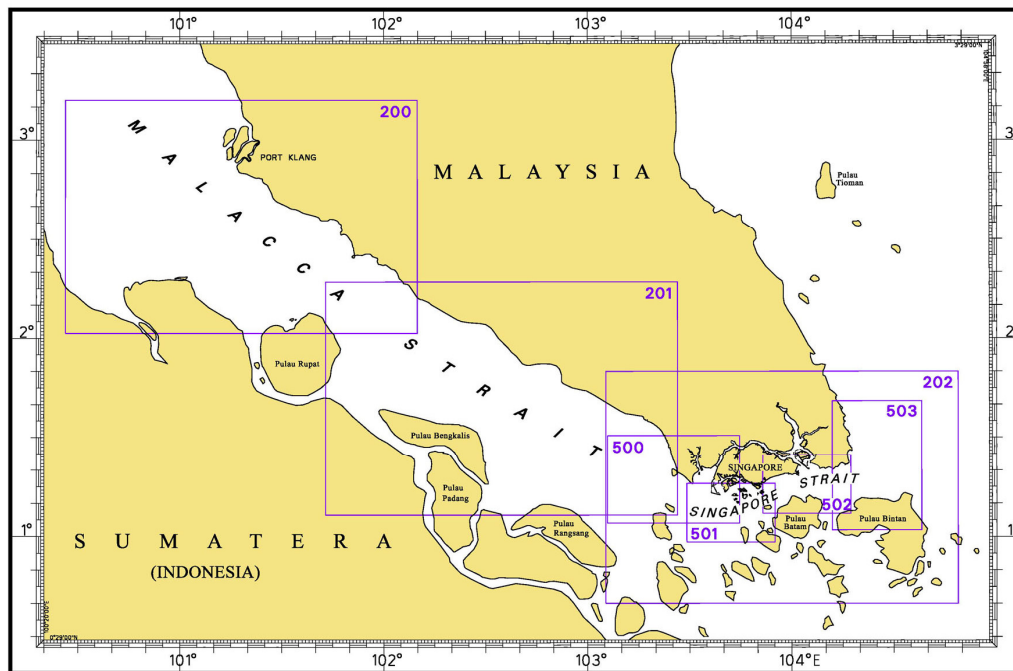
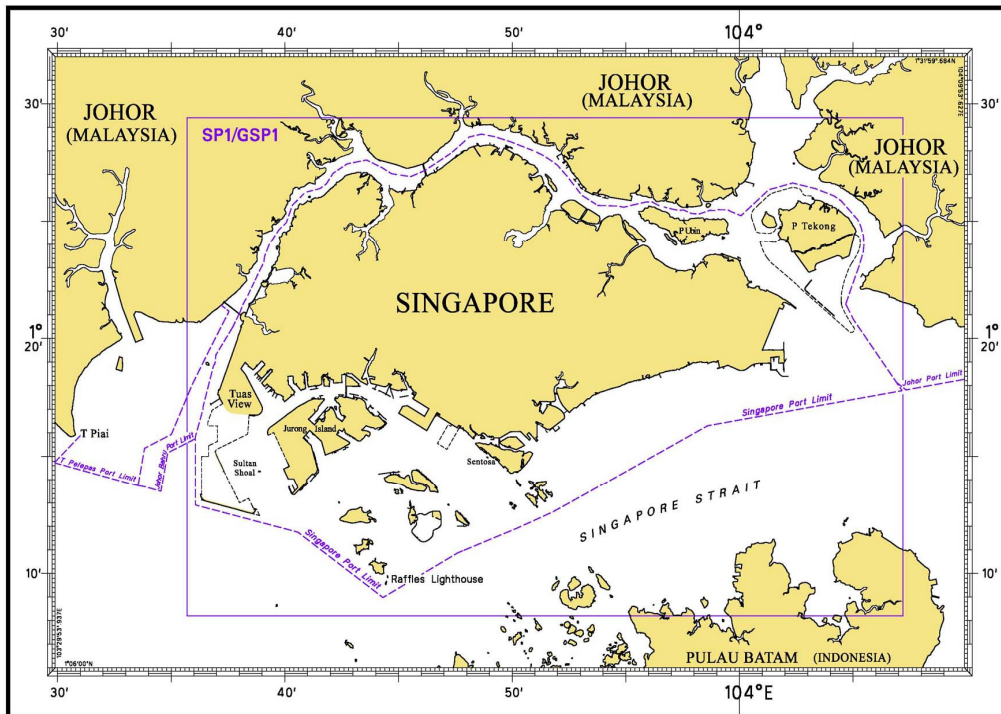
INDEX OF NOTICES

| NOTICE NO. | DESCRIPTION | PAGE NO. |
|------------|--|----------|
| - | Index of Singaporean Charts | 50 |
| - | Index of Dual Badged Charts | 51 |
| - | Index of Singapore Electronic Navigational Chart (ENC) | 52 |
| - | New Edition Singaporean Charts | 53 |
| 23 | Singaporean Chart SP1/GSP1, 502 | 54 |
| *24 | Singaporean Chart SP1/GSP1 | 54 |
| *25 | Singaporean Chart SP1/GSP1, 501 | 54 |
| 26 | Singaporean Chart 202 | 54 |
| 27T | Temporary and Preliminary Notices | 55 |
| *28 | Port Marine Notices | 56 |
| *29 | Singaporean Print-On-Demand (POD) Charts | 56 |
| *30 | Amendments to Publications | 57 |
| - | Reprint of Radio Navigational Warnings | 59 |
| - | Reprint of Admiralty Notices to Mariners for Dual Badged Charts | 60, 61 |
| - | Singapore Electronic Navigational (ENC) Distributors | 62 |
| - | Chart Agents for the Maritime and Port Authority of Singapore Nautical Charts and Publications | 63 |

* Denotes information are based on Singaporean source.

I INDEX OF CHARTS AND PUBLICATIONS

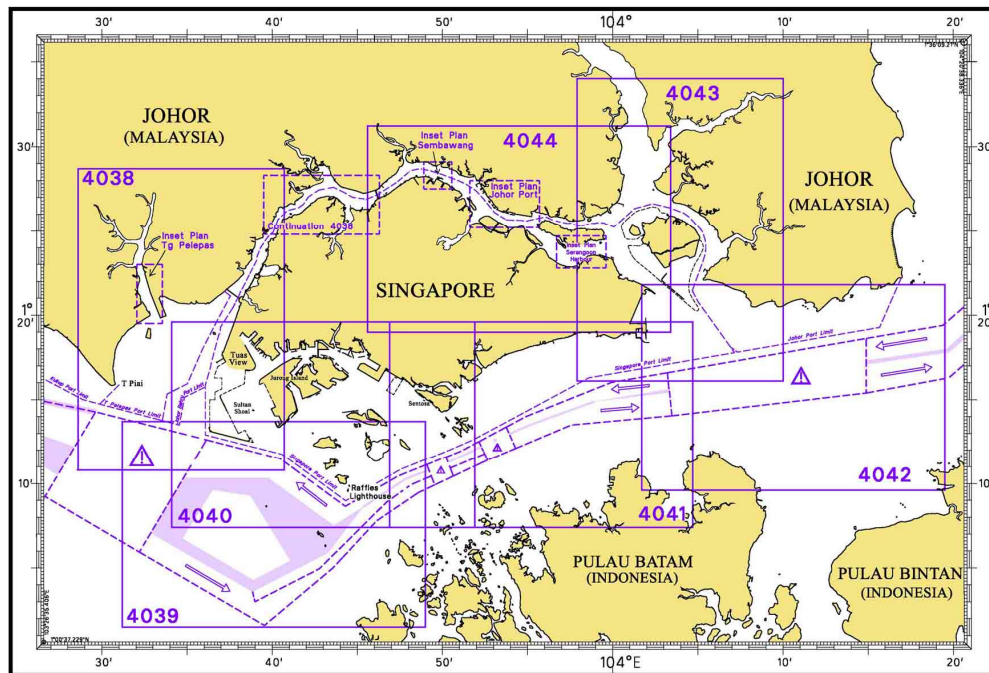
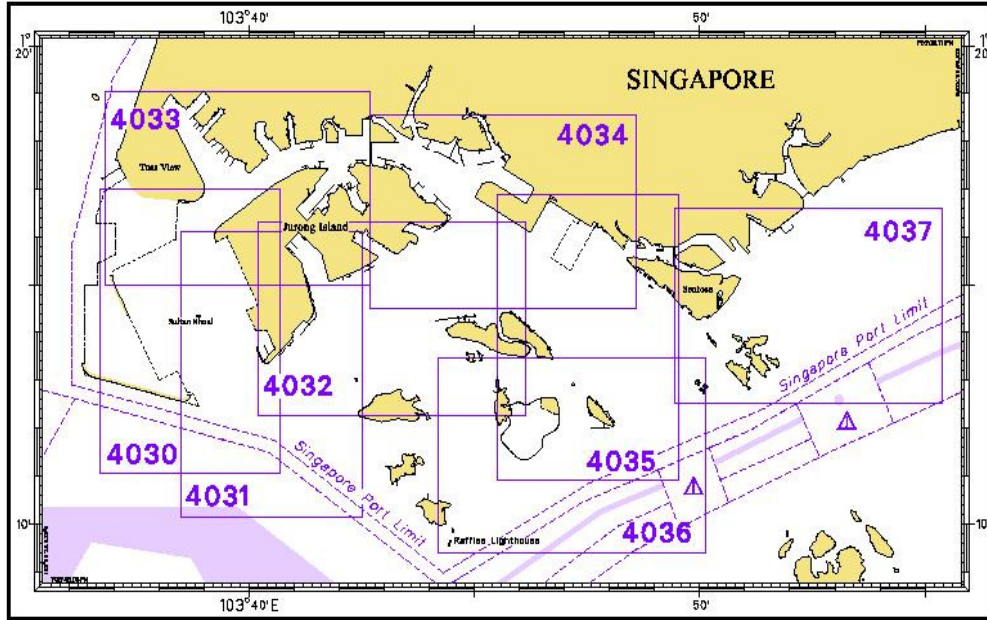
INDEX OF SINGAPOREAN CHARTS



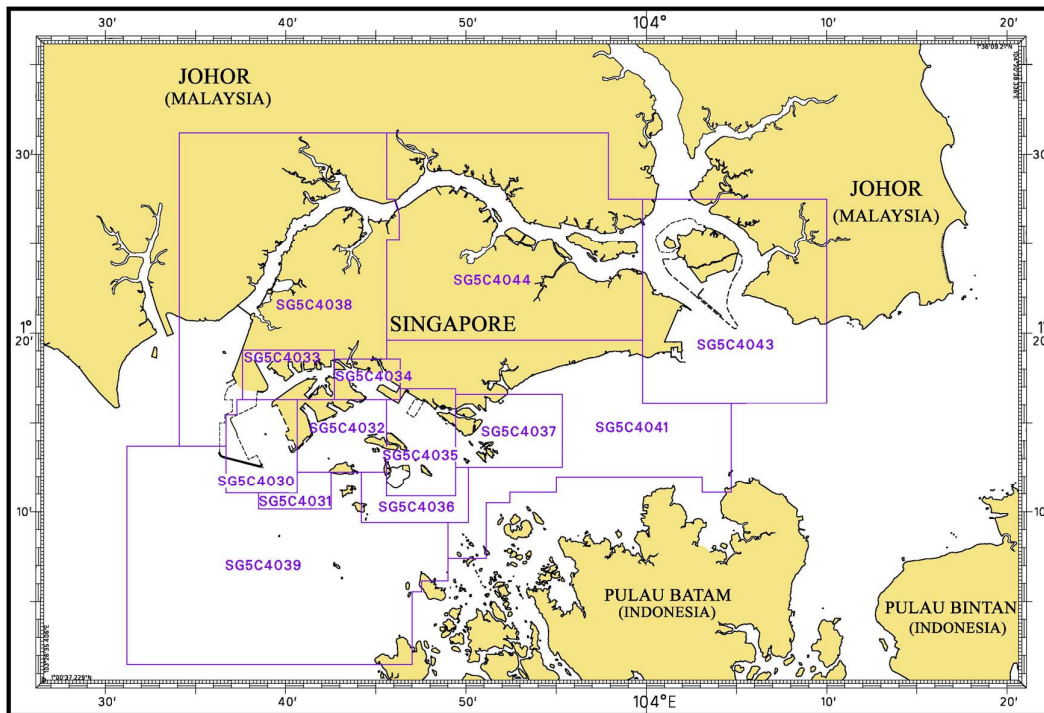
Notes:
 Updated SINGAPOREAN Charts are available through our Print-On-Demand (POD) Chart Service. For more information, refer to Section III – Navigational Information and these charts can be purchased from our authorised Chart Agents:
 DPM (Singapore) Pte Ltd, E.W. Liner Charts & Publications Pte Ltd and Motion Smith.

I
INDEX OF CHARTS AND PUBLICATIONS

INDEX OF DUAL BADGED CHARTS



I
INDEX OF CHARTS AND PUBLICATIONS
INDEX OF SINGAPORE ELECTRONIC NAVIGATIONAL CHART (ENC)







INDEX OF SINGAPORE ENC


| ENC Name | ENC Title | Latitude | Longitude |
|-----------------|---|--------------------------|------------------------------|
| SG5C4030 | West Jurong Anchorages and Temasek Fairway | 1°11'050"N 1°16'300"N | 103°36'700"E 103°40'640"E |
| SG5C4031 | Western Approaches to Jurong Island | 1°10'150"N 1°12'250"N | 103°38'500"E 103°42'530"E |
| SG5C4032 | Sinki Fairway | 1°12'250"N 1°16'300"N | 103°40'640"E 103°45'580"E |
| SG5C4033 | Tuas Bay, West Jurong Channel and Pesek Basin | 1°16'300"N 1°19'050"N | 103°37'600"E 103°42'700"E |
| SG5C4034 | East Jurong Channel, Pasir Panjang Terminal and West Keppel Fairway | 1°16'300"N 1°18'550"N | 103°42'700"E 103°46'356"E |
| SG5C4035 | Western Anchorages, Jong Fairway and Cruise Bay | 1°10'900"N 1°16'900"N | 103°45'580"E 103°49'425"E |
| SG5C4036 | Raffles Lighthouse to The Sisters | 1°09'400"N 1°12'520"N | 103°44'200"E 103°50'130"E |
| SG5C4037 | Keppel Harbour, Tanjong Pagar Terminal and Approaches | 1°12'520"N 1°16'590"N | 103°49'425"E 103°55'340"E |
| SG5C4038 | Johor Strait – Western Part | 1°13'700"N 1°31'200"N | 103°34'100"E 103°46'300"E |
| SG5C4039 | Western Approaches to Main Strait | 1°01'500"N 1°13'700"N | 103°31'200"E 103°49'000"E |
| SG5C4041 | Pulau Sebarok to Changi | 1°07'400"N 1°19'600"N | 103°45'600"E 104°04'700"E |
| SG5C4043 | Kuala Johor and Sungai Johor | 1°16'100"N 1°27'500"N | 103°59'800"E 104°10'000"E |
| SG5C4044 | Johor Strait – Eastern Part | 1°19'600"N 1°31'200"N | 103°45'600"E 103°59'800"E |


II
NEW PUBLICATIONS


Nil

II
NOTICES TO MARINERS AND CHART CORRECTIONS

| | | | |
|-----------------|---|--------------------------------|-----------------------|
| SP1/GSP1 | 6 Ed 27/1/11 New Edition | (ENCL15F1062) | NM 23/2011 |
| Insert |  | | 1°12'44'N 104°05'77'E |
| | | (Hydrographic Department, MPA) | *NM 24/2011 |
| Delete |  <i>Fl.Y.2s TPPT-1</i> | | 1°16'87'N 103°44'94'E |
| |  <i>Fl.Y.4s TPPT-2</i> | | 1°17'19'N 103°45'13'E |
| |  <i>Fl.Y.6s TPPT-3</i> | | 1°17'24'N 103°45'41'E |
| | | (HD/HY/F00104410) | *NM 25/2011 |
| Delete | legend ' <i>Obstn</i> ' | | 1°11'18'N 103°47'86'E |

| | | | |
|---------------|---|-------------------------------|-----------------------|
| 202 | 6 Ed 24/9/09 Last NM 17/2011 | (Admiralty Notice 7/757/2011) | NM 26/2011 |
| Insert |  Fl.6s10m6M | | 0°42'72'N 103°31'08'E |

| | | | |
|---------------|--|-------------------|-----------------------|
| 501 | 5 Ed 24/9/09 Last NM 17/2011 | (HD/HY/F00104410) | *NM 25/2011 |
| Insert | depth 16 | | 1°11'12'N 103°47'62'E |
| Delete |  <i>14j Obstn</i> | | 1°11'12'N 103°47'70'E |

| | | | |
|---------------|---|---------------|-----------------------|
| 502 | 4 Ed 25/9/08 Last NM 18/2011 | (ENCL15F1062) | NM 23/2011 |
| Insert |  | | 1°12'44'N 104°05'77'E |

II
TEMPORARY AND PRELIMINARY NOTICES

**(NM 27T/2011) CANCELLATION OF DREDGING OPERATION PERMATANG ALUR MUDAH,
TRAFFIC SEPARATION SCHEME OFF PULAU PISANG**

Remark : Mariners are advised that dredging operations on Permatang Alur Mudah, Traffic Separation Scheme off Pulau Pisang, promulgated in Singapore Notices to Mariners No. 2/19T/2011 is cancelled.

1. Dredging operations working area bounded by the following positions (WGS84).

| | |
|-----------|-------------|
| 1°41·50'N | 102°54·20'E |
| 1°25·10'N | 103°14·00'E |
| 1°23·00'N | 103°12·25'E |
| 1°39·40'N | 102°52·50'E |

2. Charts affected : 201, 202 and 500

Source : Peninsular Malaysia, Marine Department Notice to Mariners No. 9T/2011.

III NAVIGATIONAL INFORMATION

*(NM 28/2011) PORT MARINE NOTICES

The following PMNs have been shortlisted, as they would be of particular interest to mariners.

These notices can be accessed directly from MPA website:

http://www.mpa.gov.sg/sites/port_and_shipping/circulars_and_notices/port_marine_notices.page

| PMN No. | Subject |
|---------|---|
| 8/2011 | Marine construction works off Marina Barrage. |
| 9/2011 | Reclamation of Jurong Island Phase 4 and Tuas View extension. |
| 10/2011 | Construction of Container Berth and Stacking Yard on Jurong Island. |
| 16/2011 | Construction of lighter wharf and ancillary facilities at Marina South. |

*(NM 29/2011) SINGAPOREAN PRINT-ON-DEMAND (POD) CHARTS

Print-On-Demand (POD) Charts are the most up-to-date paper nautical charts printed for navigational use. These nautical charts are produced in accordance with the International Hydrographic Organisation (IHO) charting specifications. These official nautical charts are continually updated to the latest Notices to Mariners before they are printed and sold to users.

These POD Charts include SP1/GSP1, 200, 201, 202, 500, 501, 502 and 503.

BENEFITS TO OUR CUSTOMERS

Convenience

Customers need not make numerous hand corrections to the nautical charts before use. In addition the updated POD Charts are more accurate and reliable than offset printed charts with hand corrections.

Clarity

Clarity in the presentation of updated information as compared to lithographic printed charts, where in some cases there are several overlapping corrections over existing information.

Coverage

The POD Charts cover the Malacca and Singapore Straits, from One Fathom Bank to Horsburgh Lighthouse.

III AMENDMENTS TO PUBLICATIONS

***(NM 30/2011) UPDATING OF PUBLICATION "SINGAPORE PORT INFORMATION 2010/2011"**

1. Page 96
DEPTHS OF NAVIGATIONAL CHANNELS AND FAIRWAYS

Insert the following:

| LOCATIONS | | DEPTHS (m) | REMARKS |
|---------------------|--------------------|------------|--|
| East Jurong Channel | Deep Water Channel | 16.9 | Note: 14.4m high spot off Seraya Buoy. |
| | Out Bound Channel | 12.8 | |

Delete the following:

| LOCATIONS | | DEPTHS (m) | REMARKS |
|---------------------|--------------------|------------|--|
| East Jurong Fairway | Deep Water Channel | 16.4 | Note: 14.9m high spot off Seraya Buoy. |
| | Out Bound Channel | 12.8 | |

| LOCATIONS | DEPTHS (m) | REMARKS |
|---------------------|------------|--------------------|
| East Jurong Channel | 14.9 | Deep water channel |

Source : Master Berth List

2. Page 96

Insert the following:

| LOCATIONS | | DEPTHS (m) | REMARKS |
|-----------------------|------------------|------------|---------|
| Pasir Panjang Fairway | North of P24/P26 | 14.4 | |
| | Up to P24 | 15.1 | |
| | South of PW5 | 10.9 | |

Delete the following:

| LOCATIONS | DEPTHS (m) | REMARKS |
|------------------------------------|------------|--|
| Pasir Panjang Fairway (P24 to P26) | 14.4 | Note: Shallower waters of depths 10.6m lies north of P26, towards Pasir Panjang Wharves. |

Source : Master Berth List

3. Page 97
DEPTHS OF RIVERS AND BASINS

Insert the following:

| LOCATIONS | DEPTHS (m) | REMARKS |
|--------------|------------|---------|
| Banyan Basin | 16.5 | |

Source : Master Berth List

III AMENDMENTS TO PUBLICATIONS

4. Page 119

CHARACTERISTICS OF AIDS TO NAVIGATION PASIR PANJANG TERMINAL

Delete the following:

| Name of Beacon/Buoy | Position Lat. N Long. E Deg Min | Structure Colour & Shape | Light Characteristic | Owner |
|---------------------|--|--------------------------|----------------------|-----------------|
| TPPT-1 | 01 16·804 103 44·901 | Yellow pillar | Fl.Y.2s | TOA Corporation |
| TPPT-2 | 01 16·874 103 44·942 | Yellow pillar | Fl.Y.4s | TOA Corporation |

Source: Hydrographic Dept. MPA

5. Page 138 – Item 1
**WHARVES AND BERTHS
TANJONG PAGAR TERMINAL (PSA SINGAPORE TERMINALS) (1°16·00'N, 103°51·0'E)**

Insert the following:

| Berth | Depth Alongside (Year Surveyed) | |
|-----------|------------------------------------|---------------------|
| | Delete | Insert |
| T2 | 13·6m (2009) | 13·4m (2010) |
| T5 | 14·7m (2010) | 14·8m (2010) |
| T6 | 13·4m (2010) | 13·6m (2010) |

Source: HD/HY/B00104610 and B00104910

6. Page 158 – Item 41
TANJONG PENJURU (VOPAK TERMINALS SINGAPORE PTE LTD) (1°17·8'N, 103°43·8'E)

Insert the following:

| Berth | Depth Alongside (Year Surveyed) | |
|----------|------------------------------------|---------------------|
| | Delete | Insert |
| 1 | 14·5m (1999) | 13·7m (2010) |
| 2 | 14·0m (2010) | 14·1m (2010) |
| 3 | 12·1m (2010) | 12·0m (2010) |

Source: HD/HY/H00101011

IV
REPRINT OF RADIO NAVIGATIONAL WARNINGS

TT173

VESSELS IN EAST JOHOR STRAIT ARE ADVISED TO NAVIGATE WITH CAUTION WHEN NEAR THE PROJECT AREAS OFF PULAU TEKONG, CHANGI AND MALANG PAPAN AS SHALLOW WATER AREAS EXIST. VESSELS ARE ADVISED TO KEEP LOOKOUT FOR TUGS AND BARGES NAVIGATING NEAR THE PROJECT AREAS AND PASSENGER FERRIES CROSSING BETWEEN CHANGI AND PULAU TEKONG AND VICINITY OF PASIR GUDANG.

TT619

DREDGER QUEEN OF PENTA OCEAN IS CONDUCTING DREDGING OPERATIONS IN POSITIONS BOUNDED BY COORDINATES:

01°15.827' N 103°57.737' E

01°14.865' N 103°58.134' E

01°13.298' N 103°54.401' E

01°13.884' N 103°54.131' E

VESSELS ARE TO KEEP CLEAR.

TT753

A SMALL WOODEN CARGO BOAT 10M IN LENGTH SUNK AT 01°15.73'N 103°32.10'E.

TT884

SALVAGE OPERATIONS UNDERWAY IN 01°13.40'N 103°57.75'E. ALL SHIPS ARE REQUESTED TO GIVE A WIDE BERTH OF AT LEAST 5 CABLES WHEN PASSING THE AREA.

TT908

DANGER TO NAVIGATION (AMENDED ON 071700Z)

2 TUGBOATS REPORTED SUNK IN POSITION 01°19.63'N 104°19.28'E. ALL VESSELS ARE TO NAVIGATE WITH CAUTION.

SR154

AN UNIDENTIFIED VESSEL REPORTED SUNK SOUTH WEST OF HORSBURGH AT 01°16.12'N 104°21.5'E.

ISSUED BY SINGAPORE PORT OPERATIONS CONTROL CENTRE (as at 20th February 2011)

V
**REPRINT OF ADMIRALTY NOTICES TO MARINERS
 FOR DUAL BADGED CHARTS**

These notices can be accessed directly from UKHO Website:

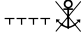
<http://www.ukho.gov.uk/ProductsandServices/MaritimeSafety/Pages/NMPublic.aspx>

395* SINGAPORE STRAIT – Johor (Malaysia) – Teluk Ampang Southwards – Restricted area.

Source: Maritime Department, Malaysian Shipping Notice 35/10

Note: This update will be included in New Editions of Chart 4042 to be published 17 February 2011.

Chart 4043 [previous update 5508/10] WGS84 DATUM

| | | |
|--------|--|--|
| Insert | limit of restricted area,  , joining: | 1° 18'·27N., 104° 10'·00E. (E border) 1° 17'·80N., 104° 07'·30E. 1° 17'·40N., 104° 07'·65E. 1° 17'·81N., 104° 10'·00E. (E border) |
|--------|--|--|

573* SINGAPORE – Selat Sinki South-westwards, Tanjong Pagar Terminal, Pulau Seringat (P. Renget Besar) South-westwards, P. Nipa South-westwards and Sembawang – Sembawang Wharves – Legend. Cautionary note. Light-beacon. Automatic Identification System. Buoy. Dredged depths. Depth.

Light List Vol. F, 2010/11, 1685.78

ALRS Vol. 6(2), 2010/11 and Vol.2, 2010/11: (5/11)

Source: Maritime and Port Authority of Singapore

Chart 4031 [previous update New Edition 25/03/2010] WGS84 DATUM


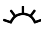

| | | |
|--------|---|---|
| Insert |  FI(2)10s11m5M Banyan with  Automatic Identification System, AIS, at light-beacon | (a) 1° 13'·346N., 103° 41'·584E. (a) above |
| Delete |  <i>FI(2)10s Banyan</i> , close SE of: | (a) above |

Chart 4032 [previous update 218/11] WGS84 DATUM


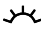


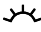


| | | |
|--------|---|---|
| Insert |  FI(2)10s11m5M Banyan with  Automatic Identification System, AIS, at light-beacon | (a) 1° 13'·346N., 103° 41'·584E. (a) above |
| Delete |  <i>FI(2)10s Banyan</i> , close SE of: | (a) above |

Chart 4037 [previous update 5508/11] WGS84 DATUM

| | | |
|------------|---|--|
| Amend | dredged depth to, <i>13.6m (2010)</i> , centred on: dredged depth to, <i>11.0m (2010)</i> , centred on: dredged depth to, <i>13.4m (2010)</i> , centred on: | 1° 15'·935N., 103° 51'·106E. 1° 15'·747N., 103° 51'·086E. 1° 15'·824N., 103° 50'·890E. |
| Substitute | depth δ_I for depth δ_S | 1° 13'·572N., 103° 50'·955E. |

Chart 4039 [previous update 361/11] WGS84 DATUM

| | | |
|--------|---|---|
| Insert |  FI(2)10s11m5M Banyan with  Automatic Identification System, AIS, at light-beacon | (a) 1° 13'·35N., 103° 41'·58E. (a) above |
| Amend | legend to,  Nipa Transit | 1° 07'·18N., 103° 37'·86E. |
| Delete |  <i>FI(2)10s Banyan</i> , close ESE of: note, NIPA TRANSIT ANCHORAGE, centred on: | (a) above 1° 02'·65N., 103° 47'·53E. |

V
**REPRINT OF ADMIRALTY NOTICES TO MARINERS
 FOR DUAL BADGED CHARTS**

573* SINGAPORE – Selat Sinki South-westwards, Tanjong Pagar Terminal, Pulau Seringat (P. Renget Besar) South-westwards, P. Nipa South-westwards and Sembawang – Sembawang Wharves – Legend. Cautionary note. Light-beacon. Automatic Identification System. Buoy. Dredged depths. Depth. (continued)

Chart 4040 [*previous update 361/11*] WGS84 DATUM


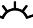


| | | | |
|--------|---|-----------|---|
| Insert |  Fl(2)10s11m5M Banyan with  Automatic Identification System, AIS, at light-beacon | (a) | 1° 13'·35N., 103° 41'·58E. (a) above |
| Amend | legend to,  Nipa Transit | | 1° 08'·17N., 103° 37'·77E. |
| Delete |  Fl(2)10s Banyan , close ESE of: note, NIPA TRANSIT ANCHORAGE, centred on: | (a) above | 1° 18'·64N., 103° 47'·88E. |

Chart 4044 (plan C, Sembawang) [*previous update 5508/10*] WGS84 DATUM

| | | |
|-------|---|------------------------------|
| Amend | dredged depth to, <i>11.6m (2010)</i> , centred on: | 1° 27'·800N., 103° 50'·079E. |
| | dredged depth to, <i>10.7m (2010)</i> , centred on: | 1° 27'·709N., 103° 50'·027E. |
| | dredged depth to, <i>9.1m (2010)</i> , centred on: | 1° 27'·642N., 103° 49'·989E. |
| | dredged depth to, <i>9.0m (2010)</i> , centred on: | 1° 27'·621N., 103° 49'·944E. |
| | dredged depth to, <i>8.6m (2010)</i> , centred on: | 1° 27'·665N., 103° 49'·946E. |
| | dredged depth to, <i>10.6m (2010)</i> , centred on: | 1° 27'·736N., 103° 49'·986E. |
| | dredged depth to, <i>11.5m (2010)</i> , centred on: | 1° 27'·828N., 103° 50'·039E. |

Updated to Admiralty Notices to Mariners Edition No. 8 of 2011 dated 24th February 2011.

SINGAPORE ELECTRONIC NAVIGATIONAL CHART (ENC) DISTRIBUTORS
Please approach any of the appointed distributors to purchase the Singapore ENC.

| DISTRIBUTOR | ADDRESS | TELEPHONE/FAX NO./EMAIL/WEBSITE |
|---|--|---|
| DPM (Singapore) Pte Ltd | 1 Maritime Square, #09-72 HarbourFront Centre, Singapore 099253 | Tel. No.: +65 6270 4060 Fax No.: +65 6276 3858 Email: sales@dpmsingapore.com.sg Website: http://www.dpmsingapore.com.sg |
| Motion Smith | 15 Jalan Kilang Barat #08-01/05 Frontech Centre Singapore 159357 | Tel. No.: +65 6220 5098 Fax No.: +65 6225 4902 Email: sales@motsmith.com Website: http://www.motsmith.com |
| Transas Marine Pacific Pte Ltd | Cyber Centre 16 & 18 Jalan Kilang Barat Singapore 159358 | Tel. No.: +65 6271 0200 Fax No.: +65 6271 7300 Email: dominic@transas.com.sg Website: http://www.transas.com.sg |
| Vector Services Pte Ltd | 15 West Coast Highway, #02-14A Pasir Panjang Building Singapore 117861 | Tel. No.: +65 6777 3602 Fax No.: +65 6777 9203 Email: kwchoy@pacific.net.sg |
| ChartWorld GmbH | Ruhrstrasse 90, D-22761 Hamburg, Germany | Tel. No.: +49 40 853 58 6942 Fax No.: +49 40 853 58 6949 Email: sales@chartworld.com Website : http://www.chartworld.com |
| Japan Hydrographic Association Electronic Charts Division | Daiichi Sogo Bldg, 6F 1-6-6, Hanedakuko, Ota-ku, Tokyo 144-0041, Japan | Tel. No.: +81 3 5708 7093 Fax No.: +81 3 5708 7094 Email: shimizu-6kj@jha.jp Website: http://www.jha.or.jp/en/jha/ |
| Jeppesen Norway A/S | P.O Box 212 , N-4371 Egersund, Norway | Tel No.: +47 514 64 700 Fax No: +47 514 64 701 Email: license.marine@jeppesen.com Website : http://www.jeppesen.com |
| PRIMAR STAVANGER | Lervigsveien 36, P.O Box 60, N-4001 Stavanger, Norway | Tel. No.: +47 51 93 9500 Fax No.: +47 51 93 9501 Email: sales@ecc.no Website : http://www.primar.no |
| United Kingdom Hydrographic Office | Admiralty Way, Taunton, Somerset TA1 2DN United Kingdom | Tel. No.: +44 1823 337900 Fax No.: +44 1823 284077 Emails: ENC.SalesReports@ukho.gov.uk Website: http://www.ukho.gov.uk |

Chart Agents for the Maritime and Port Authority of Singapore Nautical Charts and Publications

Agent's Name : **DPM (Singapore) Pte Ltd**
Address : 1 Maritime Square #09-72, HarbourFront Centre,
Singapore 099253
Telephone : (65) 6270 4060
Fax No. : (65) 6276 3858
E-mail : sales@dpmsingapore.com.sg
Internet Web Site : <http://www.dpmsingapore.com.sg>

Agent's Name : **E.W. Liner Charts & Publications Pte Ltd**
Address : 102F, Pasir Panjang Road, #08-01, Citilink Warehouse Complex,
Singapore 118530
Telephone : (65) 6323 0773
Fax No. : (65) 6323 0775
E-mail : ewliner@singnet.com.sg
Internet Web Site : <http://www.ewliner.com>

Agent's Name : **Motion Smith**
Address : 15 Jalan Kilang Barat
#08-01/05 Frontech Centre,
Singapore 159357
Telephone : (65) 6220 5098
: (After office hours: 8163 9993)
Fax No. : (65) 6225 4902
E-mail : sales@motsmith.com
Internet Web Site : <http://www.motsmith.com>

HYDROGRAPHIC NOTE - Instructions

1. Mariners are requested to notify the Chief Hydrographer, Maritime and Port Authority of Singapore, when new or suspected dangers to navigation are discovered, changes are observed in aids to navigation or where corrections to nautical publications may be necessary. Reports, which cannot be confirmed or are lacking in certain details should not be withheld.
2. Any ambiguities of time, positioning and depth should be stressed and any firm expectation of being able to check the information provided on a following voyage should be mentioned.
3. Mariners using satellite position fixing systems, eg. GPS, should provide details of equipment and datum used (where applicable). Where bearings (true or magnetic) are taken visually or by radar to fix a position, it should include more than two objects in order to provide a check on its accuracy. A position may also be defined by bearing and distance from a conspicuous object eg. beacon, lighthouse etc.
4. The note should include a tracing or a digital image of the chart used and the details should be clearly marked.
5. Echo sounders frequently register greater depths than the advertised maximum depth for the equipment, eg. a trace appearing at 50 metres may be in fact be 550 metres or even 1050 metres for equipment whose maximum depth is 500 metres. Erroneous depths caused by 2nd transmission error can usually be recognised by the following:
 - (a) the tracing being weaker than normal for the depth registered,
 - (b) the trace appearing to pass through the transmission line,
 - (c) the feathery nature of the trace.
6. Upon receipt of a hydrographic note, a Notice to Mariners may be issued. The sender's vessel or name is quoted as the source unless the same information is also received in foreign Notices to Mariners.
7. Reports of shoals, uncharted dangers and defects in aids to navigation may also be made to the appropriate Singapore Port Operations Control Centre on VHF Channels 10, 12, 14, 68 or 73.

HYDROGRAPHIC NOTE

To:

Chief Hydrographer
Hydrographic Department
Maritime and Port Authority of Singapore
460 Alexandra Road PSA Building #20-00
Singapore 119963

Tel : (65) 6375 1227
Fax : (65) 6278 7646
Email : hydrographic@mpa.gov.sg

Sender's Contact Details :

Date :
Name of Vessel :
Address of Sender :
Tel : Fax :
Email :

Nature of Observation :

General Location :
Subject :
Position : Lat. Long.
Charts Used :
Date & Time of Observation :
Details :
.....
.....
Attachment :

Equipment Used :

Type of Position Fixing : GPS / DGPS Others :
Type of Echo Sounder :

Name and Signature :

Ship's/Company's Stamp :